



Article

Lamin A/C Is Dispensable to Mechanical Repression of Adipogenesis

Matthew Goelzer ¹, Amel Dudakovic ², Melis Olcum ^{3,4}, Buer Sen ³, Engin Ozcivici ⁴, Janet Rubin ³, Andre J. van Wijnen ² and Gunes Uzer ^{1,*}

¹ Department of Mechanical & Biomedical Engineering, Boise State University, 1910 University Drive, MS-2085, Boise, ID 83725, USA; matthewgoelzer@u.boisestate.edu

² Mayo Clinic, Rochester, MI 55905, USA; dudakovic.amel@mayo.edu (A.D.); vanwijnen.andre@mayo.edu (A.J.v.W.)

³ Department of Medicine, University of North Carolina, Chapel Hill, NC 27599, USA; melis@email.unc.edu (M.O.); buer_sen@med.unc.edu (B.S.); janet_rubin@med.unc.edu (J.R.)

⁴ Department of Bioengineering Izmir Institute of Technology, Urla 35430, Turkey; enginozcivici@iyte.edu.tr

* Correspondence: gunesuzer@boisestate.edu; Tel.: +1-(208)-426-4461

Abstract: Mesenchymal stem cells (MSCs) maintain the musculoskeletal system by differentiating into multiple lineages, including osteoblasts and adipocytes. Mechanical signals, including strain and low-intensity vibration (LIV), are important regulators of MSC differentiation via control exerted through the cell structure. Lamin A/C is a protein vital to the nuclear architecture that supports chromatin organization and differentiation and contributes to the mechanical integrity of the nucleus. We investigated whether lamin A/C and mechanoresponsiveness are functionally coupled during adipogenesis in MSCs. siRNA depletion of lamin A/C increased the nuclear area, height, and volume and decreased the circularity and stiffness. Lamin A/C depletion significantly decreased markers of adipogenesis (adiponectin, cellular lipid content) as did LIV treatment despite depletion of lamin A/C. Phosphorylation of focal adhesions in response to mechanical challenge was also preserved during loss of lamin A/C. RNA-seq showed no major adipogenic transcriptome changes resulting from LIV treatment, suggesting that LIV regulation of adipogenesis may not occur at the transcriptional level. We observed that during both lamin A/C depletion and LIV, interferon signaling was downregulated, suggesting potentially shared regulatory mechanism elements that could regulate protein translation. We conclude that the mechanoregulation of adipogenesis and the mechanical activation of focal adhesions function independently from those of lamin A/C.



Citation: Goelzer, M.; Dudakovic, A.; Olcum, M.; Sen, B.; Ozcivici, E.; Rubin, J.; van Wijnen, A.J.; Uzer, G. Lamin A/C Is Dispensable to Mechanical Repression of Adipogenesis. *Int. J. Mol. Sci.* **2021**, *22*, 6580. <https://doi.org/10.3390/ijms22126580>

Academic Editor: James M. Holaska

Received: 18 May 2021

Accepted: 16 June 2021

Published: 19 June 2021

Publisher's Note: MDPI stays neutral with regard to jurisdictional claims in published maps and institutional affiliations.



Copyright: © 2021 by the authors. Licensee MDPI, Basel, Switzerland. This article is an open access article distributed under the terms and conditions of the Creative Commons Attribution (CC BY) license (<https://creativecommons.org/licenses/by/4.0/>).

Keywords: lamin A/C; LINC; nucleoskeleton; nuclear envelope; adipogenesis; mechanical signals; mesenchymal stem cells

1. Introduction

As one of the lamin family proteins that form the nucleoskeleton, lamin A/C (gene symbol: *Lmna*) plays a vital role in providing the mechanical and structural integrity of the cell nucleus [1–3]. Mutations in *Lmna* lead to premature aging in Hutchinson–Gilford progeria syndrome [2–4], also known as progeria [1–3], where the progeroid farnesylated lamin A/C (i.e., progerin) causes alterations to heterochromatin and DNA damage [3–6]. Mechanical and structural attributes of the cell and nucleus also change during loss and mutation of lamin A/C [7,8]. Nuclei containing progerin show increased stiffness when visualized under strain [9]. When lamin A/C is depleted, cellular elasticity and viscosity of the cytoplasm decrease [10]. Additionally, irregular nuclear morphology, including blebbing and loss of circularity, is attributed to progerin presence and lamin A/C depletion [7,8]. Such a change in mechanical properties affects the response to external forces. The nucleus of lamin-A/C-deficient cells displays a higher displacement magnitude in response to biaxial strain, indicating lower nuclear stiffness compared to wild-type

nuclei [11]. Therefore, lamin A/C plays a critical role in determining human health and regulating cellular and nuclear mechanical structure and shape.

Mesenchymal stem/stromal cells (MSCs) are tissue-resident somatic multipotent cells that can differentiate into musculoskeletal lineages, including osteoblasts and adipocytes [12]. Depletion of lamin A/C in MSCs impedes osteoblast differentiation. MSCs treated with an siRNA targeting *Lmna* shows reduced osteoblast differentiation transcription factors such as osteocalcin (*Bglap*), osterix (*Sp7*), and bone sialoprotein (*Ibsp*) and an increase in fat droplet formation [13]. Additionally, mouse studies have shown that *Lmna*^{-/-} mice have a significant reduction in bone mass compared to WT mice, reflecting reduced osteoblast numbers [14]. Lamin A/C overexpression induces osteogenesis while simultaneously inhibiting adipogenesis in human MSCs [15]. In addition to causing progeria and inhibition of osteogenesis, mutations of *Lmna* also produce lipodystrophy syndromes. Heterozygous mutations of *Lmna* cause familial partial lipodystrophy, Dunnigan variety (FPLD2), which is characterized by the loss of subcutaneous fat in the upper and lower extremities [16]. The FPLD2-associated *Lmna* p.R482W mutation slows adipogenic differentiation in fibroblastic cells extracted from FPLD2 patients and in human adipose stem cells [17]. At the same time, lamin-A/C-depleted MSCs, when cultured on softer substrates, are more permissive of adipogenic differentiation compared to control MSCs [18]. While these findings suggest a role for lamin A/C in regulating differentiation at both the organism and the cellular level, whether lamin A/C depletion contributes to mechanical regulation of MSC differentiation remains insufficiently explored.

MSCs replace and rejuvenate skeletal and connective tissues in response to environmental mechanical signals [19–21]. For example, application of external mechanical challenge in the form of LIV over 14 days increases proliferation and osteogenic differentiation markers and subsequent mineralization of MSC cultures in vitro [22,23]. An important signaling node for mechanical control of MSCs is focal adhesions, macromolecule protein complexes located on the cellular membrane, that connect the cytoskeleton to the extracellular matrix (ECM) where the cell is anchored to the extracellular environment through integrins [24]. During dynamic mechanical stimulus, integrin engagement is regulated by activation of focal adhesion kinase (FAK) at the tyrosine 397 residue [25]. We have reported that both LIV and substrate strain lead to FAK phosphorylation at tyrosine 397 [26]. This activation of FAK at focal adhesions both recruits signaling molecules that lead to cytoskeletal restructuring and activates concomitant mechanosignaling events such as the Akt/ β -catenin (*Akt1/Ctnnb1*) pathway [27]. For example, application of mechanical stimuli with strain, fluid flow, and LIV has been shown to activate both β -catenin and RhoA signaling in MSCs [26,28,29]. Within the context of MSC adipogenesis, activation of these parallel signaling pathways results in decelerated adipogenic commitment of MSCs, as measured by reduced production of adipogenesis-related proteins such as adiponectin (encoded by the adiponectin gene *Adipoq*) and peroxisome-proliferator-activated receptor gamma (*Ppparg1*) [30].

In addition to cytomechanical signaling events initiated at focal adhesions and the cytoskeleton, control of MSC differentiation is also dependent on nuclear connectivity within the cytoskeleton. Inhibiting nucleo-cytoskeletal connectivity by disabling the function of linker of nucleoskeleton and cytoskeleton (LINC) complexes impedes the nuclear entry of important molecular transducer mechanical information such as YAP/TAZ and β -catenin, which act as co-transcriptional factors for regulating MSC adipogenesis and osteogenesis [31]. As opposed to LINC complex depletion, lamin A/C depletion has no effect on mechanically induced nuclear β -catenin entry [32], suggesting that lamin A/C may be dispensable for the mechanically induced activation of focal adhesions that lead to the de-phosphorylation and subsequent nuclear entry of β -catenin. These previous studies show that lamin A/C plays a central role in nuclear organization and structure, as well as contributing to the cell's ability to sense structural qualities of the extracellular matrix to guide differentiation of MSCs. However, the role of lamin A/C in focal adhesion signaling and mechanically induced control of MSCs' fate in response to dynamic mechanical chal-

lenges remains incompletely understood. Here we tested the requirement of lamin A/C for the mechanical response of MSCs. Using LIV, we investigated the role of lamin A/C depletion on the mechanical control of MSC adipogenesis.

2. Results

2.1. siRNA Depletion of Lamin A/C Weakens the Nuclear Elastic Modulus in MSCs

We investigated the effects of lamin A/C depletion on cellular and nuclear morphology as well as mechanical properties. MSCs treated with either a control siRNA (siCntl) or a lamin-A/C-specific siRNA (siLmna) were stained against F-actin and DNA. Compared to the siCntl group, siLmna-treated MSCs showed a more elongated nuclear morphology but no apparent changes in the F-actin cytoskeleton (Figure 1a). As shown in Figure 1b, 3D morphology quantification indicated a 9% decrease in nuclear sphericity in siLmna-treated MSCs when compared to MSCs treated with a control siRNA ($p < 0.001$). The maximal nuclear area, volume, and height were increased by 32%, 31%, and 11% in siLmna-treated MSCs, respectively, when compared to siCntl-treated cells (Figure 1b; $p < 0.001$). Young's modulus was measured for both whole cells and extracted nuclei treated with either siLmna or siCntl. Young's modulus was measured using a rounded AFM probe tip, which was pressed onto the surface of the whole cell directly above the nucleus or on an isolated nucleus (Figure 1c,d). Confocal imaging with DNA and lamin A/C labeling of a representative isolated nucleus (Figure 1e) indicated that the nuclear structure remains intact following isolation. Treatment with siLmna caused a 45% reduction in whole-cell stiffness when compared to siCntl-treated MSCs (Figure 1f; $p < 0.001$), while extracted nuclei exhibit a 55% reduction in stiffness in lamin-A/C-depleted cells compared to the siCntl group ($p < 0.01$, Figure 1g).

2.2. siRNA Depletion of Lamin A/C Increases SUN2 Nuclear Levels and Focal Adhesion Proteins

To further characterize the effects of lamin A/C depletion on the nuclear envelope and focal adhesions, the LINC complex and focal adhesion proteins were investigated. Confocal images of the siCntl and siLmna groups indicated that there were no visible changes in the LINC proteins SUN1 and SUN2 when lamin A/C was depleted (Figure 2a). Quantitative analysis of the confocal images detected no differences in SUN1 or SUN2 nuclear envelope localization (Supplementary Materials Figure S1). Hoechst-stained images can be found in Supplementary Materials Figure S2. We examined the same proteins using cellular fractionation followed by Western blotting and densitometry analysis (Figure 2b,c). All the measurements were normalized to whole-cell siCntl protein amounts, which were set to 1. Comparing siLmna treatment with siCntl, lamin A/C was significantly decreased in whole-cell fractions ($-35%$, $p < 0.05$). The relative lamin A/C concentration was greater in the nuclear fraction and led to larger values, while band intensities of the siLmna group remained significantly lower compared to the siCntl group ($-11%$, $p < 0.05$). Except for a small amount of SUN1 detection in the cytoplasm, both SUN1 and SUN2 were largely restricted to the nucleus. In contrast to the results from confocal imaging (Supplementary Materials Figure S1b,c), Western blots quantifying cell fractionations from lamin-A/C-depleted cells showed an increase in nuclear SUN2 ($+44%$, $p < 0.05$). Focal adhesion proteins were also altered under siLmna treatment. Total focal adhesion kinase (FAK) adhered to the cell culture plate experienced an increase of 39% compared to control-treated cells ($p < 0.05$; Figure 2d,e). The amount of Akt adhering to cell culture plates also increased by 50% ($p < 0.05$). No changes in vinculin were detected.

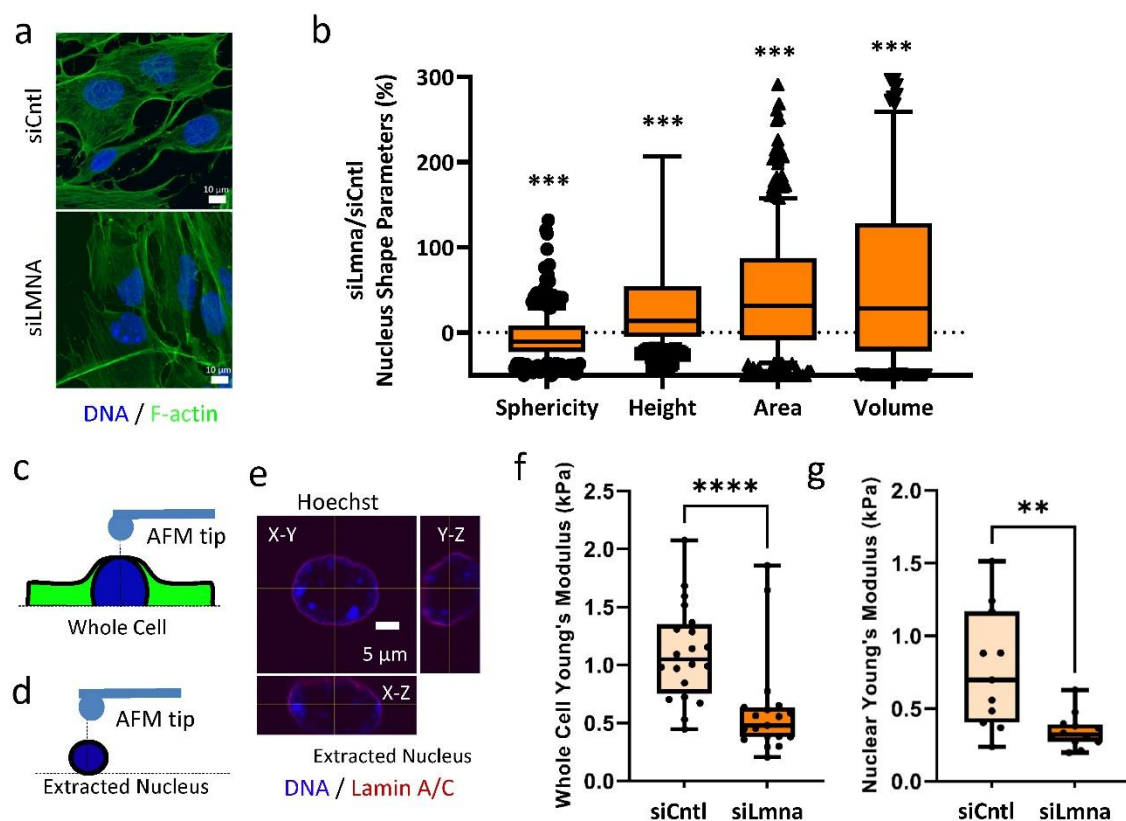


Figure 1. siRNA depletion of lamin A/C weakens the nuclear elastic modulus in MSCs: (a) Confocal Image of F-actin (phalloidin, green) and nucleus (Hoechst, blue). Scale bar: 10 μm . (b) Nuclear sphericity decreased by 8% in MSCs treated with Lamin A/C specific siRNA (siLmna) compared to MSCs treated with a non-specific control siRNA (siCtrl) ($p < 0.05$, $n = 342$). Nuclear area of siLmna treated cells showed a 32% increase when compared to siCtrl ($p < 0.05$, $n = 342$). Nuclear volume siLmna treated cells increased by 31% compared to siCtrl ($p < 0.05$, $n = 342$). When compared to the nuclear height of siCtrl MSCs, siLmna treated cells had increased nuclear height of 12% ($p < 0.05$, $n = 342$). (c) Schematic of AFM probe tip testing whole cell Young's modulus in live MSCs. (d) Depiction of AFM probe tip testing live extracted nucleus. (e) Confocal image of extracted nucleus depicting its orthogonal views from X-Y, X-Z, Y-Z planes (Hoechst, blue; Lamin A/C, Red) Scale bar: 5 μm . (f) Whole cell Young's modulus of the siLmna group was 45% lower when compared to the siCtrl group ($p < 0.0001$, $n = 16$). (g) Young's modulus of extracted live nucleus in siLmna MSCs remained 55% lower when compared to siCtrl MSCs ($p < 0.01$, $n = 13$). Results are presented as mean \pm STD. Group comparisons were made via non-parametric Mann Whitney tests. $p < 0.05$, ** $p < 0.01$, *** $p < 0.001$, **** $p < 0.0001$ against control.

2.3. Focal Adhesions Maintain Response to Mechanical Stimulus in Lamin-A/C-Depleted MSCs

Based on the observed increases in basal levels of FAK during lamin A/C depletion (Figure 2d,e) we next asked whether mechanical activation of FAK is altered by further quantifying the mechanical activation of FAK via its phosphorylation at the tyrosine 397 residue (pFAK), which is indicative of integrin engagement [25]. MSCs were treated with either strain or LIV and compared to non-mechanically stimulated controls. Basal pFAK levels normalized to total FAK (TFAK) were 85% elevated in the siLmna group when compared to the siCtrl group ($p < 0.05$) (Figure 3a,b). Phosphorylated FAK levels in both siCtrl- and siLmna-treated groups increased by 101% ($p < 0.05$) and 87% ($p < 0.001$), respectively, in response to a 20 min strain (2%, 0.1 Hz) when compared to non-strained counterparts (Figure 3c,d). LIV also activated FAK, increasing pFAK by 331% ($p < 0.001$) in siCtrl- and 83% ($p < 0.001$) in siLmna-treated MSCs in response to LIV (0.7 g, 90 Hz) (Figure 3a,b).

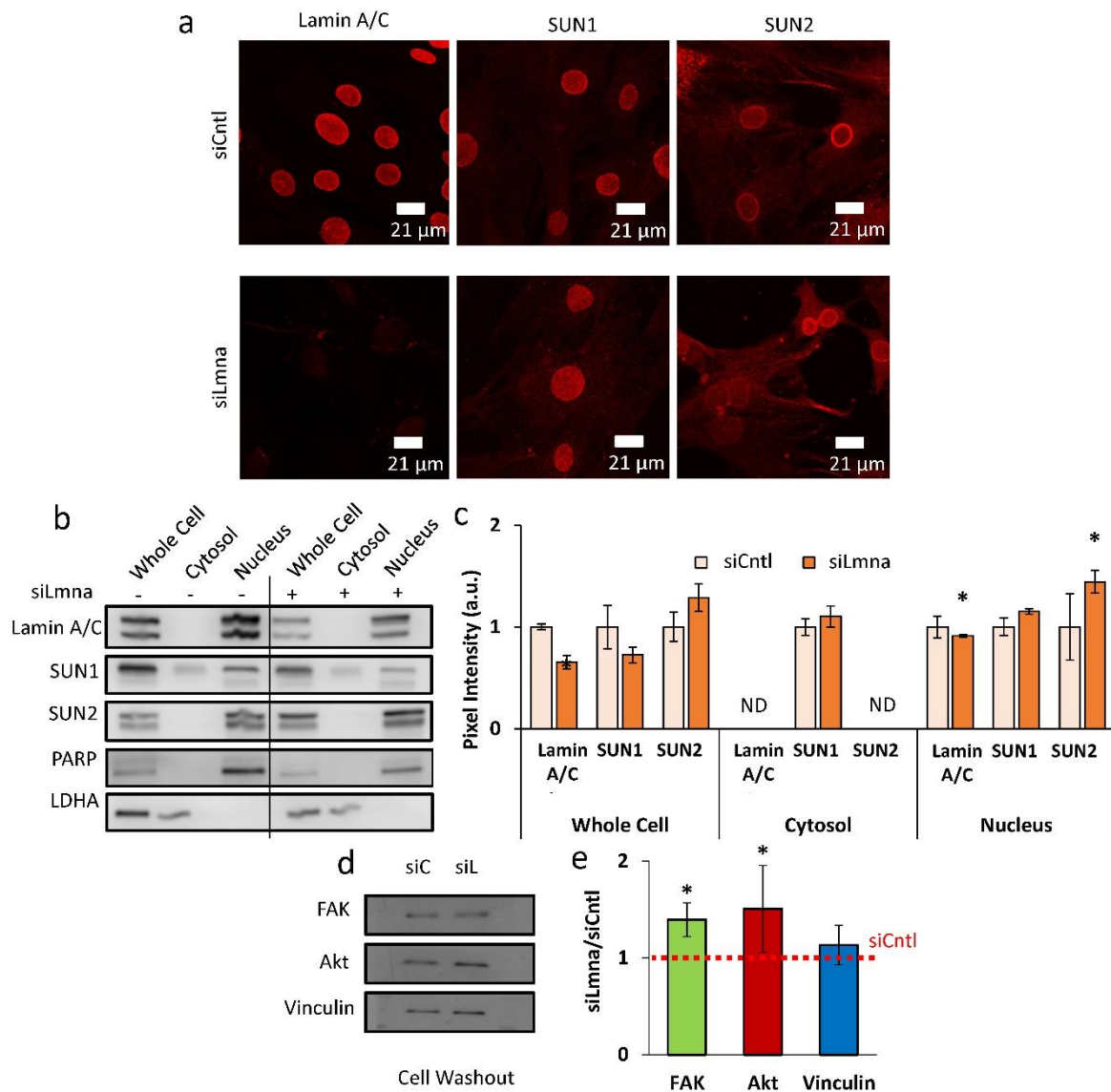


Figure 2. siRNA depletion of lamin A/C increases SUN2 nuclear levels and focal adhesion proteins: (a) Confocal images of cells treated with the siCtrl and siLmna siRNA groups. Primary antibodies targeted lamin A/C, SUN1, and SUN2. Hoechst stained images can be found in Figure S2. (b) Representative western blots of cell fractionations (whole cell, cytosol and nucleus) with cells treated with either siCtrl or siLmna. Primary antibodies targeted lamin A/C, SUN1, SUN2, PARP, and LDHA. Line represents removal of protein ladder marker lane, uncropped blots are provided in Figure S1. (c) Analysis of western of cell fractionation western blots ($n = 3/\text{grp}$). siLmna treated cells had a 44% increase in nucleus fraction ($p < 0.05$) compared to siCtrl samples. SUN1 showed no detectable changes. ND represents non-detectable levels. (d) Representative western blot of focal adhesion proteins following a cell washout. Primary antibodies targeted of FAK, Akt, and Vinculin in siCtrl and siLmna siRNA treated cells. (e) Densitometry analysis showed that, when compared to siCtrl levels siLmna treated MSCs showed increased levels of total FAK (39%, $p < 0.05$) and total Akt (50%, $p < 0.05$), no change in Vinculin was detected ($n = 3/\text{grp}$). Results are presented as mean \pm STE. Scale bar: 21 μ m. Group comparisons were made via parametric two-tailed Student *t*-test (C) or one-way ANOVA followed by a Newman-Keuls post-hoc test. * $p < 0.05$ against control.

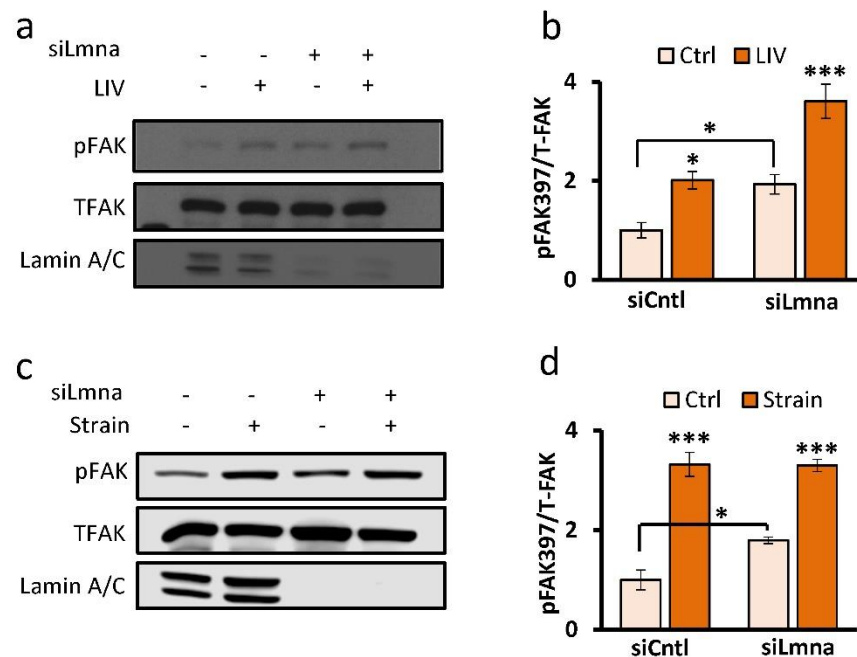


Figure 3. Focal adhesions maintain response to mechanical stimulus in lamin A/C depleted MSCs: (a) Representative western blots for pFAK (Tyr 397), TFAK, and lamin A/C in siCntrl and siLmna treated cells groups treated with 2 bouts of LIV (20 min, 90 Hz, 0.7 g) separated by 2 hour rest period. LIV treated samples had a 2-fold increase of pFAK compared to non-LIV. (b) Analysis of western image of pFAK, TFAK, and lamin A/C during LIV ($n = 4$ /grp). The non-LIV siLmna group had a 92% ($p < 0.05$) increased basal pFAK compared to the non-LIV siCntrl group. In response to LIV, both siCntrl and siLmna treated MSCs elicited 101% ($p < 0.05$) and 87% ($p < 0.001$) increases in pFAK, respectively, compared to non-LIV controls. (c) Representative western blots for pFAK (Tyr 397), TFAK, and Lamin A/C of the siCntrl and siLmna groups treated with a single bout strain (20 min, 0.1 Hz, 2% strain). (d) Analysis of pFAK, TFAK, and lamin A/C immediately after strain application ($n = 4$ /grp). The non-strain siLmna group had a 79% ($p < 0.05$) increased basal pFAK compared to the non-strain siCntrl group. In response to strain, pFAK levels were elevated by 331% ($p < 0.001$) and 83% ($p < 0.001$) in siCntrl and siLmna treated MSCs respectively. Results are presented as mean \pm STE. Group comparisons were made via one-way ANOVA followed by a Newman-Keuls post-hoc test. * $p < 0.05$, *** $p < 0.001$, against control or against each other.

2.4. Application of Daily LIV Treatment Decreases Adipogenic Differentiation in MSCs

As focal adhesion signaling was intact in siLmna-treated MSCs, we next probed downstream processes to ask whether LIV application, known to slow adipogenesis [33], was effective when lamin A/C was depleted. In our experiment timeline, cells were first treated with siRNA on day 1 and then cultured in adipogenic media concomitant with LIV treatment up to 7 days (Figure 4a). On day 2, adipogenic media were placed on cells and LIV treatment started. LIV treatment occurred twice a day for 20 min with 2 h rests in between treatments. On day 7, cell protein, imaging plates, and RNA samples were collected together for Western blotting, lipid droplet staining, and RNA-seq analysis. Probing the adipogenesis marker adiponectin (gene symbol: *Adipoq*) between non-LIV controls, lamin A/C-depleted cells showed a 39% decrease in adiponectin at 7 days (Figure 4c,d). Similarly, compared within LIV-treated groups, adiponectin levels in the siLmna group was 51% lower than in siCntrl-treated cells with LIV ($p < 0.01$). Compared to non-LIV controls, daily LIV application decreased adiponectin levels by 30% in the siCntrl group ($p < 0.01$) and 44% in the siLmna group ($p < 0.001$). To further validate the reduction in adipogenesis during LIV treatment, lipid droplets were imaged via Oil Red O (Figure 4d) and LipidSpot 610 fluorescent lipid droplet staining (Biotium, CA; Figure 4e). Quantification of the mean fluorescent lipid droplet intensity per cell from individual imaging fields revealed that LIV-

treated siCntl samples had a reduction of 49% in lipid droplet intensity when compared to non-LIV-treated siCntl samples ($n = 36, p < 0.0001$) (Figure 4f). Non-LIV-treated siLmna samples had a 42% decrease in lipid droplet intensity compared to non-LIV-treated siCntl samples ($n = 36, p < 0.001$). When comparing non-LIV- and LIV-treated siLmna samples, lipid droplet intensity per cell was reduced in LIV-treated samples by 44% ($n = 36, p < 0.05$).

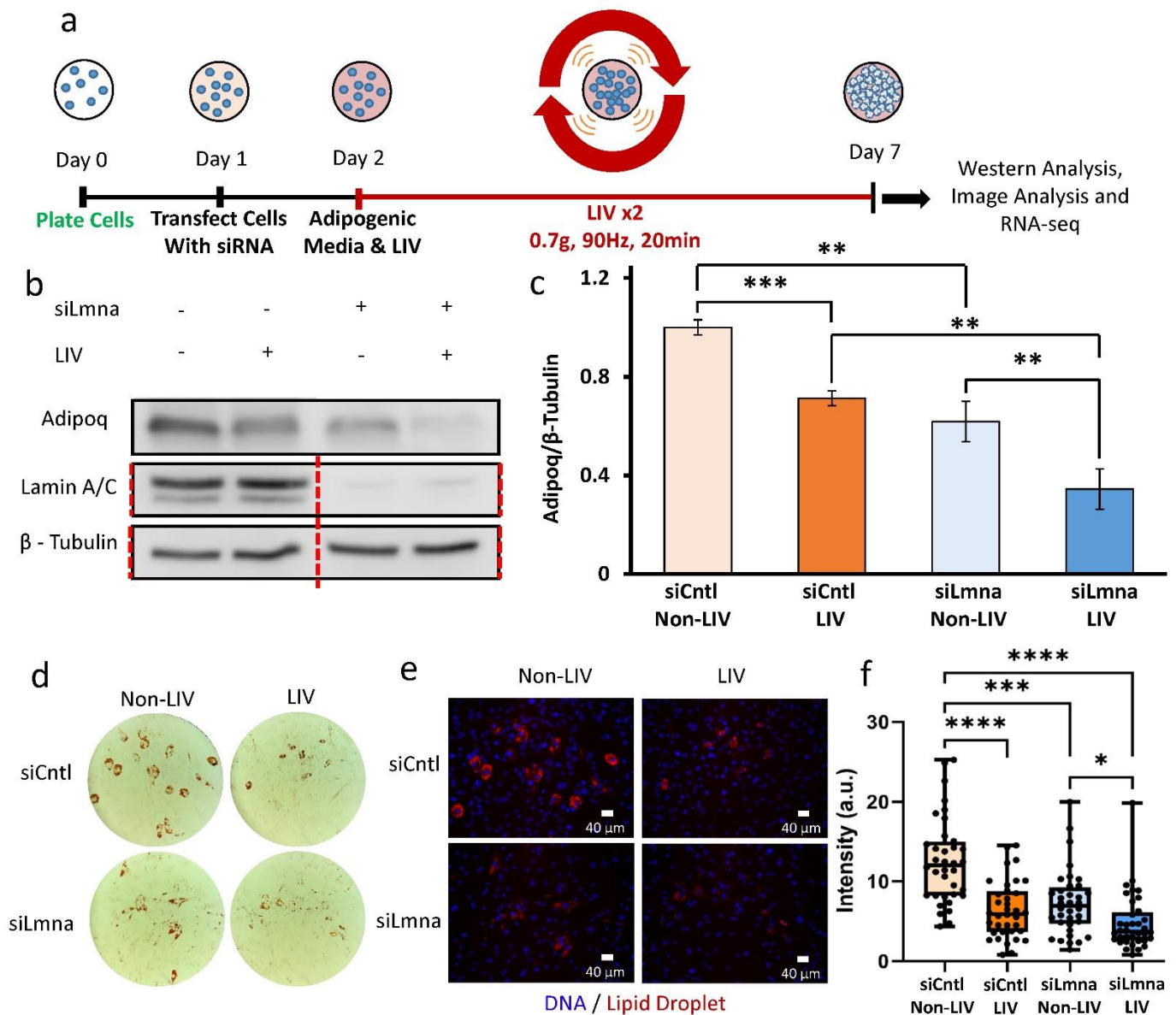


Figure 4. Application of daily LIV treatment decreases adipogenic differentiation in MSCs: (a) On day 0 cells were plated. Then, on day 1 cells were transfected with siRNA. On day 2 adipogenic media was placed on cells and cells were treated with LIV for 20 min, twice daily. Once cells differentiated, cells were pulled off for western analysis, image analysis, and RNA-seq. (b) Representative western blots of cells treated with siCntl and siLmna after 7 days of adipogenic induction with and without LIV treatment. Adiponectin (Adipoq), lamin A/C, and β -Tubulin were targeted. Lamin A/C and β -Tubulin were imaged on the same plot. Red line represents western blot cropped for alignment; uncropped blots were provided in Figure S4. (c) Relative levels of adiponectin of the siCntl and the siLmna groups. Adipoq levels in iLmna treated MSCs with no LIV were decreased by 39% ($p < 0.01, n = 4$) compared to siCntl MSCs with no LIV. LIV treated samples had 30% reduction in Adipoq levels compared to non-LIV controls for siCntl treated cells ($p < 0.001, n = 3$ /grp). siLmna treated cells treated with LIV had a reduction of Adipoq levels of 44% compared to non-LIV samples ($p < 0.01, n = 3$ /grp). siLmna cells treated with LIV compared to siCntl cells with LIV treatment had a 51% reduction in Adipoq ($p < 0.01, n = 3$ /grp). (d) Representative Oil-Red-O images. (e) Representative images of lipid droplet staining corresponding to Oil-Red-O images

Scale bars: 40 μm . (f) Analysis of the mean lipid droplet intensity per cell. LIV treated siCntl cells experienced a decrease of lipid droplet mean intensity by 49% ($n = 36, p < 0.0001$). siLmna cells treated with LIV had a decrease of 44% compared to non-LIV siLmna samples. ($n = 36, p < 0.05$). siLmna non-LIV samples had 42% less mean intensity compared to siCntl non-LIV samples ($n = 36, p < 0.001$). Western results are presented as mean \pm STE. Western group comparisons were made via parametric two-tailed Student *t*-test. Lipid droplet group comparisons were made with Kruskal-Wallis Test. * $p < 0.05$, ** $p < 0.01$, *** $p < 0.001$, **** $p < 0.0001$, against control.

2.5. Differential Effect of Lamin A/C Depletion and LIV on mRNA Transcription during Adipogenic Differentiation

RNA-seq was performed to determine the effects of LIV and siLmna treatment on differential expression of mRNA in MSCs during adipogenesis. Read values were filtered for expression by selecting genes with average minimal levels of 0.3 fragments per kilobase of transcript per million mapped reads (FPKM; *t*-test $p < 0.05$ and fold change > 1.4). Hierarchical clustering of these genes generated a heatmap (Figure 5a) in which siCntl-treated samples clustered together in one clade, while undifferentiated and siLmna-treated samples were clustered together in another clade that was visually separated from siCntl-treated samples. Principal component analysis (Figure 5b) showed further grouping of siCntl and siLmna samples. Principal components 1 and 2 explained 40.4% and 15.9% of the total variance, respectively, with prediction ellipses indicating the probability of 0.95 that a new observation of the same group will fall inside the ellipse. FPKM levels for adipogenic genes with at least one group having significantly differential expression (\log_2 fold change ≥ 1 , Wald $p < 0.05$) compared to the non-LIV siCntl group as detected by DESEQ2 analysis (Figure 5c). Results showed significant differential expression between siCntl and siLmna groups.

2.6. Lamin A/C Depletion Impedes Adipogenic Transcription in MSCs

DESEQ2 analysis was conducted on non-LIV siLmna and siCntl groups to determine differential gene expression between siRNA treatments during adipogenic treatment. A volcano plot for the comparison between siLmna- and siCntl-treated samples under adipogenic constraints (Figure 6a) revealed that there are 52,607 statistically unchanged transcripts between lamin-A/C-depleted and control MSCs with Wald values of $p > 0.05$ (gray and green data points). As shown in green data points, 2000 genes showed at least a 2-fold difference (i.e., \log_2 fold change ≥ 1), while 749 genes showed a statistically significant change between lamin-A/C-depleted and control MSCs with Wald values of $p < 0.05$ (shown in blue), and 427 of them had a less than 2-fold difference (i.e., \log_2 fold change ≤ 1). The remaining 322 genes showed at least a 2-fold difference (i.e., \log_2 fold change ≥ 1), which represents significant and differentially expressed genes. Upregulated (red genes on the right side, $n = 173$) and downregulated genes (red genes on the left side, $n = 149$) upon lamin A/C depletion were then assessed by clustering analysis using STRING [34]. As highlighted in Figure 6b, upregulated genes upon lamin A/C depletion were associated with cellular processes such as (i) tissue repair (e.g., genes generally involved in angiogenesis, hematopoiesis, and mechanical stress shielding), (ii) ECM remodeling (e.g., genes generally involved in take-up and intra-cellular transport of ECM debris as well as suppression of apoptosis), and (iii) cell surface transporters (e.g., genes that mediate the trafficking of compounds across membranes). The detected GO term pathways with FDR < 0.05 are presented in Supplementary Materials Table S1. Collectively, the biological function of these genes appears to be related to tissue repair, inflammation, and extracellular matrix homeostasis. As depicted in Figure 6c, downregulated gene groups upon lamin A/C depletion included (i) cell adhesion and cytoskeletal organization, (ii) interferon signaling and regulation of gene expression (e.g., DNA and RNA binding and protein degradation), (iii) G-protein-coupled receptor signaling (e.g., diverse range of cell surface receptors and components of the angiotension system), (iv) lipid metabolism and paracrine inflammatory signaling, and (v) adipogenic phenotype. The detected GO term pathways

with $FDR < 0.05$ are presented in Supplementary Materials Table S2. These downregulated genes together are generally involved in cell migration, energy metabolism, and adipogenic differentiation. The results from Gene Ontology and gene network analysis revealed that lamin A/C depletion has pleiotropic effects on gene expression, yet many gene pathways converge on cell-surface-related biochemical events, interactions with the extracellular matrix, and internal metabolic pathways.

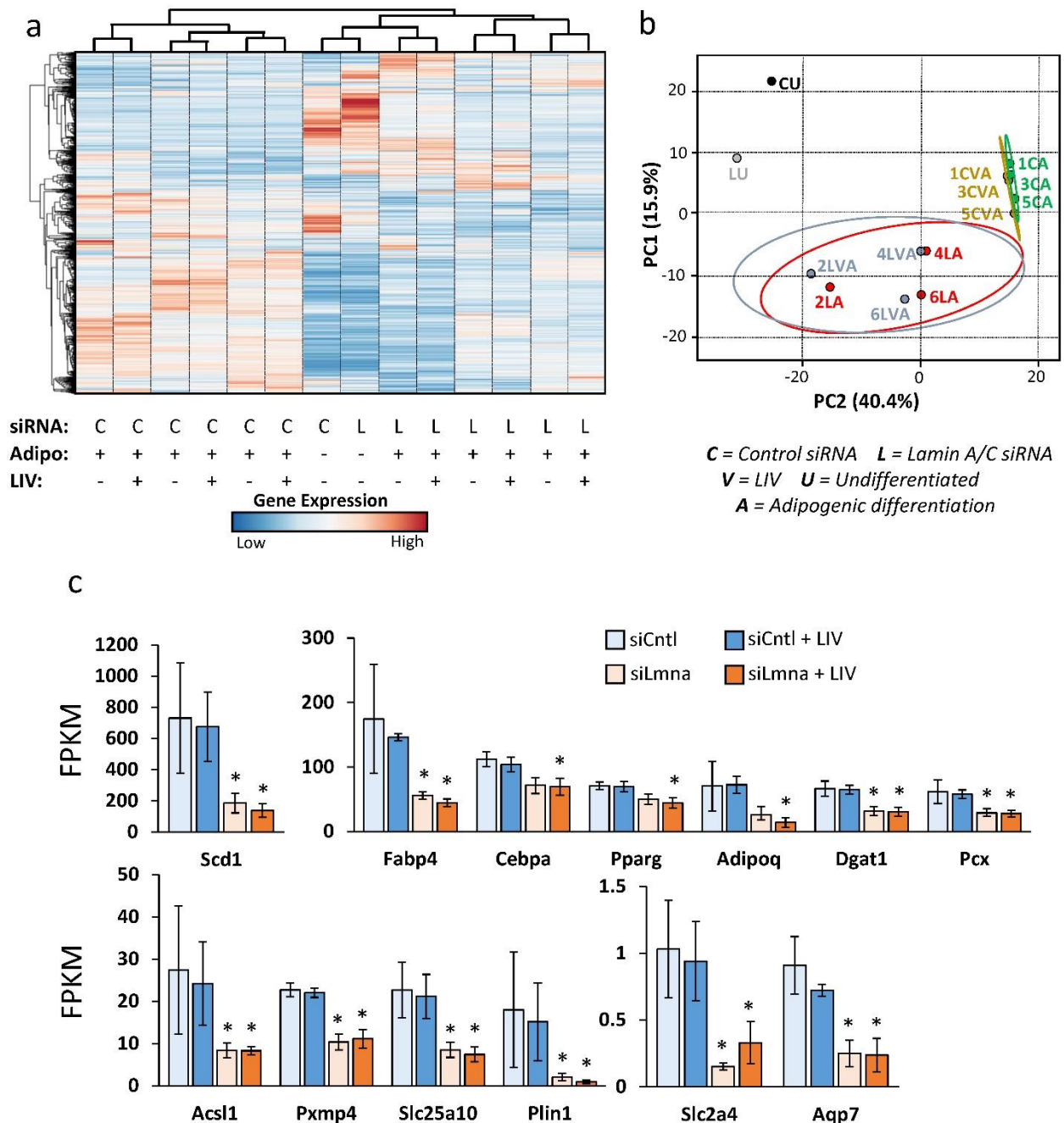
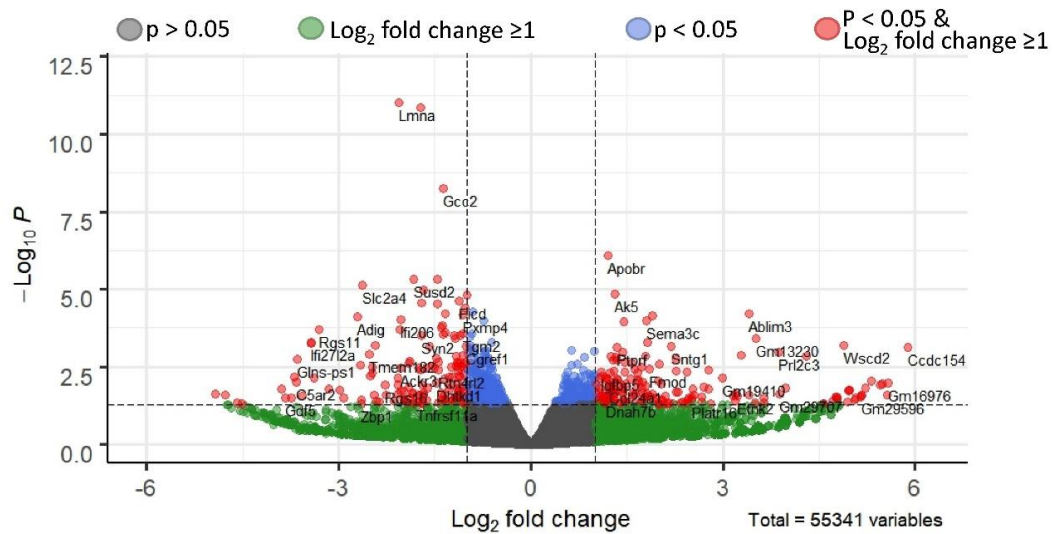


Figure 5. Differential effect of lamin A/C depletion and LIV on mRNA transcription during adipogenic differentiation: (a) Heat map of genes with average minimal expression of 0.3 FPKM, t -test $p < 0.05$, and fold change greater than 1.4. Unit variance scaling is applied to rows. (b) Principle component plot where principal component 1 and principal component 2 that explain 40.4% and 15.9% of the total variance, respectively. Prediction ellipses are such that with probability 0.95, a new observation from the same group will fall inside the ellipse. $n = 14$ data points. (c) Average FPKM values of DESEQ2 analysis for differentially expressed genes related to adipogenic phenotype. Results are presented as mean \pm STE. * $p < 0.05$ and fold change > 1.0 compared to siCntl.

a siLmna vs siCntl MSCs



b Upregulated in with lamin A/C depletion

c Downregulated in with lamin A/C depletion

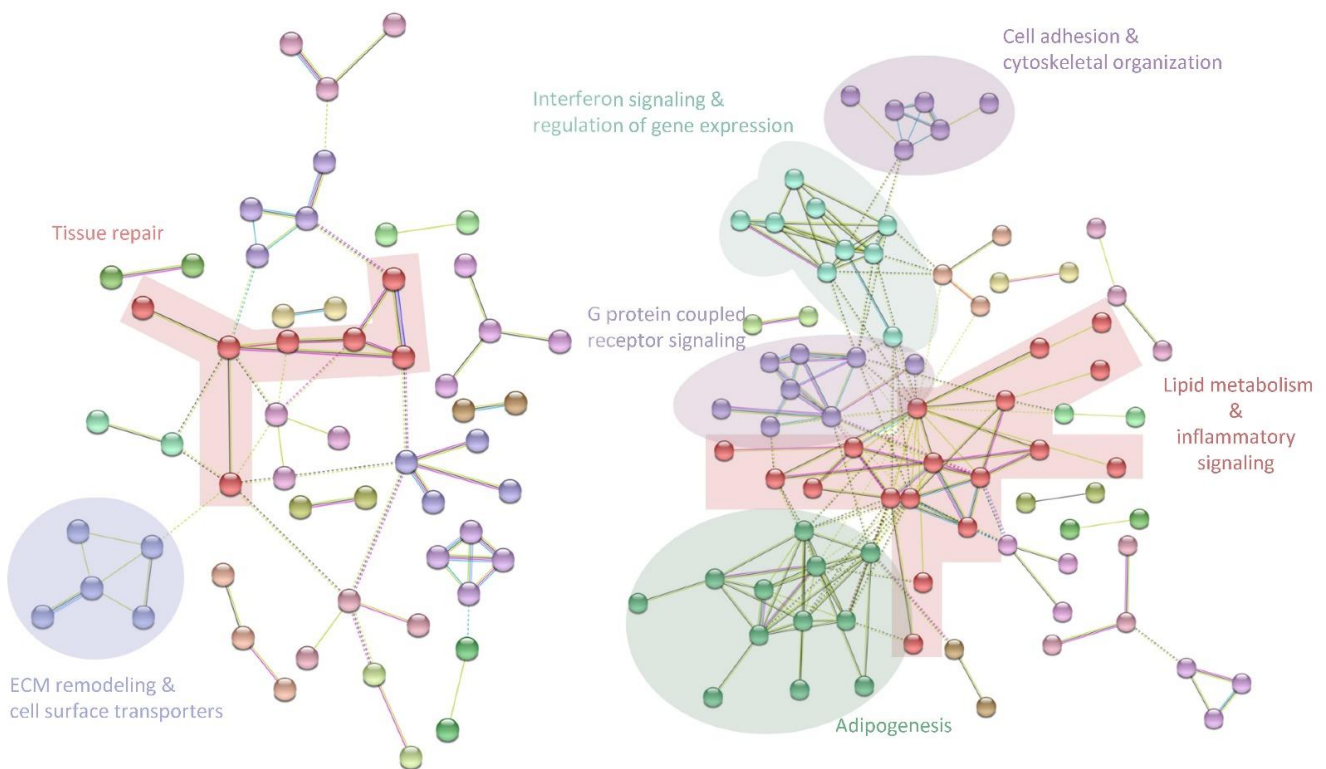


Figure 6. Lamin A/C depletion impedes adipogenic transcription in MSCs: (a) Volcano plot of siLmna compared to siCntl under adipogenic conditions. Genes with Wald values greater than p value of 0.05 are colored in grey. Genes with differential gene expression equal to or larger than 2-fold ($Log_2 = 1$) but have Wald values greater than p value of 0.05 are colored in green. Genes colored with blue have Wald values smaller than p value of 0.05, but differential gene expression less than 2-fold ($Log_2 = 1$). Genes with Wald values smaller than p value of 0.05 and differential gene expression equal to or larger than 2-fold ($Log_2 = 1$) are colored in red. Grouping of five or more associated genes were highlighted and subsequently subjected to a supervised analysis of biologic function. (b) Upregulated genes were associated with cellular processes included tissue repair, ECM remodeling and cell surface transporters. (c) Downregulated gene groups included, cell adhesion and cytoskeletal organization, interferon signaling and regulation of gene expression, G-protein coupled receptor signaling, lipid metabolism and paracrine inflammatory signaling and adipogenic phenotype.

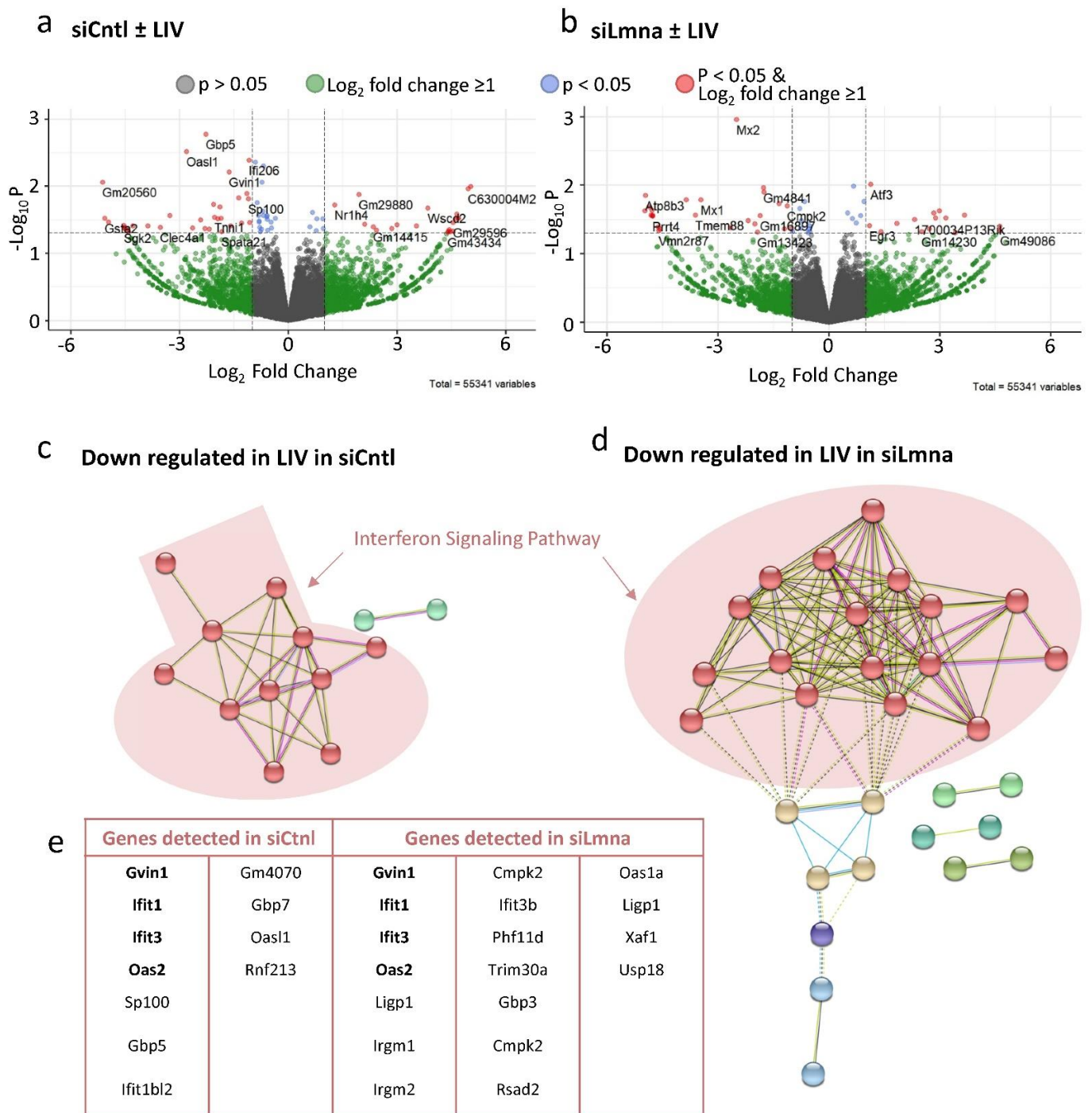


Figure 7. Low Intensity Vibration Decreases Interferon Signaling Pathway Gene Expression: (a) Volcano plot comparing the siCntl adipogenesis with or without LIV treatment (siCntl ± LIV). (b) Volcano plot comparing the siLmna adipogenesis with or without LIV treatment (siLmna ± LIV). Genes with Wald values greater than p value of 0.05 are colored in grey. Genes with differential gene expression equal to or larger than 2-fold ($Log_2 = 1$) but have Wald values greater than p value of 0.05 are colored in green. Genes colored with blue have Wald values smaller than p value of 0.05, but differential gene expression less than 2-fold ($Log_2 = 1$). Genes with Wald values smaller than p value of 0.05 and differential gene expression equal to or larger than 2-fold ($Log_2 = 1$) are colored in red. Both siCntl (c) and siLmna (d) showed downregulation of genes closely associated with interferon signaling pathway. (e) Cells treated with siCntl had 11 genes associated with interferon signaling pathway while siLmna treated cells had 16 genes associated with the interferon signaling pathway that had decreased expression. **Bolded** gene names (*Gvin*, *Ifit1*, *Ifit3*, and *Oas2*) names were found in both siCntl and siLmna treated samples.

2.7. Low-Intensity Vibration (LIV) Decreases Interferon Signaling Pathway Gene Expression

To determine the effects of LIV, DESEQ2 analysis was performed comparing non-LIV siCntl and siLmna controls against their LIV-treated counterparts during adipogenesis. The volcano plot comparing siCntl adipogenesis with or without LIV treatment (siCntl \pm LIV) is shown in Figure 7a. There were 53,326 statistically unchanged genes between with Wald values of $p > 0.05$ (gray and green data points), with 1939 of them showing at least a 2-fold difference (green). While 76 genes showed a statistically significant change between LIV-treated and control MSCs with Wald values of $p < 0.05$, shown in blue, 26 of them had a less than 2-fold difference. The remaining 53 genes showed at least a 2-fold difference (red). Assessing downregulated genes via clustering revealed an interferon-related gene cluster in the LIV treatment group (Figure 7b). Similarly, LIV treatment upon lamin A/C depletion also revealed an interferon-related gene cluster that was downregulated (Figure 7d). Together, cells treated with siCntl had 11 genes and those treated with siLmna had 16 genes associated with the interferon signaling pathway that experienced decreased expression during LIV treatment (Figure 7e). Excluding this latter finding, it appears that while lamin A/C loss has a dramatic impact on gene expression programs, LIV has minimal effects on the transcriptome of differentiating MSCs.

3. Discussion and Conclusions

In lamin-A/C-depleted cells, microscopic observations of increased blebbing, elongated nuclear shape, and ruffled nuclear membrane [7,35,36] indicate a compromised nuclear structure. Our quantification of the 3D nuclear structure of lamin-A/C-depleted cells supported these previous observations and showed reduced sphericity and an increased planar nuclear area, while nuclear height and volume increased compared to controls. It has been reported that lamin A/C depletion increases nuclear height and volume in part due to reduced recruitment of perinuclear and apical F-actin cables [37]. While reduction in apical F-actin may contribute to a decrease in elastic modulus in lamin-A/C-depleted intact MSCs, a similar decrease was observed in our lamin-A/C-depleted isolated live nuclei. The similarities in decreased stiffness in both intact cells and isolated nuclei suggest that nuclear softening is the primary driver of decreased cell stiffness upon lamin A/C loss of function and that loss of lamin A/C is a major contributor to nuclei stiffness.

Our data suggest that MSCs compensate for lamin-A/C-mediated nuclear softening by increasing their focal adhesions. Not only was total FAK and Akt accumulation at focal adhesions more robust in lamin-A/C-depleted MSCs, but also tyrosine 397 phosphorylated FAK (pFAK) was higher, which suggests increased integrin engagement [25]. These findings are not surprising as depletion of both lamin A/C [38] and nucleo-cytoskeletal connector nesprin-1 (*Syne1*) [39] are shown to increase substrate traction in cells. Both LIV and strain pushed acute FAK phosphorylation of lamin-A/C-depleted cells higher than control cells, indicating that the focal adhesion signaling remains intact despite lamin A/C depletion in MSCs. Phosphorylation of FAK in siCntl and siLmna cells during LIV increased proportionally to their basal pFAK levels. However, strain-induced pFAK increases were increased to similar levels of LIV-treated siLmna samples despite being a stronger mechanical force. It is known that the number of focal adhesions determine the amount of pFAK [21,40]. While it is possible that LIV and strain activate pFAK differently, our previous findings show that LIV and strain responses are additive [26], and therefore this option is unlikely. Therefore, it is possible that the strain-activated pFAK was saturated and did not increase pFAK levels higher than that of LIV mechanical activation. Ultimately, these data show that lamin A/C is also not required for the activation of focal adhesions during mechanical stimulation.

Similar to focal adhesions, nucleo-cytoskeletal connectivity provided by the LINC complex remained intact under lamin A/C depletion. Previous studies have shown that LINC proteins SUN1 and SUN2 bind to the lamin A/C in order to mediate a connection from the inner nucleus to the cytoskeleton and ultimately to the focal adhesions that make a physical connection to the extracellular matrix [41,42]. Quantification of confocal images

of SUN1 and SUN2 revealed no changes compared to controls. However, quantification of three biological replicates showed that nuclear SUN2 protein levels were increased. We previously reported that depletion of LINC complex function impedes LIV-mediated FAK activation in MSCs [26]. As shown in Figure 3a, basal FAK phosphorylation levels were higher, and LIV resulted in a larger FAK phosphorylation response of lamin-A/C-depleted cells, indicating that the LINC complex function is intact despite lamin A/C depletion. This is not surprising as the localization of SUN1 and SUN2 proteins to the nuclear envelope is not entirely dependent upon lamin A/C [42,43]. While noted changes in SUN proteins after lamin A/C depletion suggest a putative relationship (Figure 2c), loss of lamin A/C did not negatively impact the SUN protein levels, suggesting that LINC complex connectivity remains intact.

Adipogenesis has recently been shown to decrease with mutated *Lmna*, specifically in cells expressing the lipodystrophy-associated *Lmna* p.R482W mutation [17]. Our data support this previous observation: MSCs treated with siLmna experienced slower adipogenic differentiation compared to siCntl-treated cells, as marked by reduced adiponectin levels and reduced lipid droplet formation and intensity (Figure 4c,f). Further investigation revealed that siLmna-treated MSCs show a reduction in lipid droplet intensity compared to siCntl-treated MSCs (Supplementary Materials Figure S2a–f). A multiple linear regression analysis with two- and three-way interactions was performed to identify possible determinants of decreased lipid accumulation in siLmna-treated MSCs. ANOVA of the parameters for the multiple linear regression model showed that the nuclear perimeter as well as interactions between lamin A/C:area, lamin A/C:perimeter, lamin A/C:area:circularity, and lamin A/C circularity:perimeter comparisons were found to be significant ($p < 0.05$; Supplementary Materials Figure S2f). As shown in Supplementary Materials Figure S2h, a multiple linear regression model with these main effects, two-way interactions, and three-way interactions was able to predict the average lipid droplet intensity per cell with an R^2 of 0.507, suggesting that decreased lamin A/C levels alone do not explain the decreased lipid droplet accumulation in lamin-A/C-depleted cells. Our RNA-seq analysis of the RNA samples taken from the same samples as the Western blotting and imaging data indicate that MSCs display an undifferentiated phenotype upon lamin A/C depletion, reflected by reduced expression of genes associated with adipogenic and lipid-related metabolic pathways (Figures 5c and 6c). LIV treatment did not have a significant impact on adipogenic gene expression, indicating that lamin A/C and not low-intensity vibration has a greater influence on adipogenic differentiation.

In contrast to large shifts in transcription found after lamin A/C depletion, RNA-seq data from the same samples as the Western blotting data from Figure 4b indicated that only 21 genes for siCntl- and 74 genes for siLmna-treated cells were differentially expressed as a result of LIV treatment. Despite the lack of changes at the transcriptional level, lamin-A/C-depleted MSCs retain the ability to respond to mechanical signals and exhibit decelerated adipogenesis reflected by reduced adiponectin and lipid droplet intensity in LIV-treated cells. Although mechanical stimulation using LIV does not produce widespread alteration in mRNA expression, we did observe a distinct LIV-dependent signature characteristic of interferon-responsive genes. Relationships between the type 1 interferon signaling pathway and mechanical forces, specifically low-intensity forces such as shear strain and vibration, have been shown to inactivate interferons [44]. Regulating activation of the interferon signaling pathway is likely to impact the cellular interpretation and response to their physical environment, which may be done through controlling protein translation. Indeed, the absence of major transcriptome changes during adipogenesis in response to LIV points to post-transcriptional or post-translational regulatory events. However, further research is needed to elucidate any post-transcriptional or post-translational mechanoregulation effects of LIV mechanical stimulation on adipogenesis.

In this study, we did not validate our RNA-seq data using qPCR. While this may be seen as a limitation of the study, qPCR can be highly biased as it depends upon primer sequence design, variances in the target annealing temperatures, and the fact that results

are usually referenced to a reference gene [45,46]. RNA-seq, in contrast, minimizes these inherent biases, especially the ones related to unforeseen variances in the reference gene due to experimental conditions, as the raw mRNA fragments are sequenced and aligned to the entire genome, thus providing an unbiased view of gene expression across all samples. Given the extremely close correlations between qPCR and RNA-seq as reported by others [47–51], and the fact that we sequenced three independent biological replicates and ensured sequencing and alignment quality, we are confident that the mRNA data are representative of a true biologic response.

In summary, we showed that lamin A/C depletion results in decreased nuclear integrity, with more robust focal adhesions contributing to reduced adipogenic differentiation. This resulting adaptive response in the cytoskeletal structure maintains LIV-induced focal adhesion signaling and maintains the ability of LIV to limit adipogenesis of MSCs. Findings of this study indicate that lamin A/C is required for proper adipogenic commitment of MSCs and that the mechanical regulation of adipogenesis uses lamin-A/C-independent pathways to elicit a response in MSCs.

4. Materials and Methods

4.1. MSC Isolation

Bone-marrow-derived MSCs (mdMSC) from 8–10-week-old male C57BL/6 mice were isolated, as described in [52], from multiple mouse donors and MSC pools, providing a heterogenous MSC cell line. Briefly, tibial and femoral marrow was collected in RPMI-1640, 9% FBS, 9% HS, 100 µg/mL of penicillin/streptomycin, and 12 µM L-glutamine. After 24 h, non-adherent cells were removed by washing with phosphate-buffered saline and adherent cells cultured for 4 weeks. Passage 1 cells were collected after incubation with 0.25% trypsin/1 mM EDTA × 2 min, and re-plated in a single 175 cm² flask. After 1–2 weeks, passage 2 cells were re-plated at 50 cells/cm² in expansion medium (Iscove modified Dulbecco's, 9% FBS, 9% HS, antibiotics, L-glutamine). mdMSCs were re-plated every 1–2 weeks for two consecutive passages up to passage 5 and tested for osteogenic and adipogenic potential and subsequently frozen.

4.2. Cell Culture, Pharmacological Reagents, and Antibodies

Fetal calf serum (FCS) was obtained from Atlanta Biologicals (Atlanta, GA, USA). Culture media, trypsin-EDTA, antibiotics, and phalloidin–Alexa Fluor 488 were obtained from Invitrogen (Carlsbad, CA, USA). MSCs were maintained in IMDM with FBS (10%, *v/v*) and penicillin/streptomycin (100 µg/mL). For phosphorylation measurements, the seeding cell density was 10,000 cells/cm². For immunostaining experiments, the seeding cell density was 3000 cells/cm². For phosphorylation measurements and immunostaining experiments, all groups were cultured for 48 h before beginning experiments and were serum-starved overnight in serum-free medium.

For adipogenic differentiation experiments, the seeding cell density was 10,000 cells/cm². Cells were transfected 24 h after cell seeding with siRNA targeting *Lmna* (siLmna) or a control sequence (siCntl) using RNAiMax from Invitrogen. Adipogenic media and LIV treatment followed a previously published protocol, where 24 h after transfection, adipogenic media was added that contained dexamethasone (0.1 µM) and insulin (5 µg/mL) [19]. Cell cultures were incubated with the combined transfection media and adipogenic differentiation media for 7 days after adipogenic media was added with or without LIV treatment (2 × 20 min per day separated by 2 h).

The following antibodies were purchased: Akt (#4685), p-Akt Ser473 (#4058L), β-tubulin (D3U1W), and p-FAK Tyr397 (#328 3) from Cell Signaling Technology (Danvers, MA, USA); adiponectin (PA1-054) from Thermo Fisher Scientific (Rockford, IL, USA); and FAK (sc-558) and lamin A/C (sc-7292) from Santa Cruz Biotechnology (Dallas, TX, USA).

4.3. LIV and Strain

Vibrations were applied at peak magnitudes of 0.7 g at 90 Hz twice for 20 min separated by a 2 h rest period at room temperature. Uniform 2% biaxial strain was delivered at 10 cycles per minute for 20 min using the Flexcell FX-5000 system (Flexcell International, Hillsborough, NC, USA). Controls were sham-handled. During adipogenesis experiments, LIV was applied 24 h after initial transfection, a regimen we have previously shown to be effective [26].

4.4. Isolation of Focal Adhesions

Cells were incubated with triethanolamine (TEA)-containing low-ionic-strength buffer (2.5 mM TEA, pH 7.0) for 3 min at RT and 1× PBS containing protease/phosphatase inhibitors. A Waterpik nozzle (Fort Collins, CO, USA; www.waterpik.com, accessed on 17 May 2021) held 0.5 cm from the plate surface at approximately 90° supplied the hydrodynamic force to flush away cell bodies, membrane-bound organelles, nuclei, cytoskeleton, and soluble cytoplasmic materials so that residual focal adhesions could be isolated, as reported previously [26].

4.5. siRNA-Silencing Sequences

For transient silencing of MSCs, cells were transfected with gene-specific small interfering RNA (siRNA) or control siRNA (20 nM) using RNAiMax (Thermo Fisher Scientific, Waltham, MA, USA) according to the manufacturer's instructions. The following Stealth Select siRNAs (Invitrogen, Waltham, MA, USA) were used in this study: *Lmna* 5'-UGGGAGAGGCCUAAGAAGCAGCUUCA-3' and negative control for *Lmna* 5'-UGGGAGUCGGAAGAAGACUCGAUCA-3'.

4.6. Isolation of Nuclei for Young's Modulus

MSCs were plated at 10,000 cells/cm² cell density. For mechanical and structural testing, nuclei were isolated by scraping cells in PBS and then suspending cells in hypotonic solution, followed by centrifugation at 3000× g. Nuclei were then extracted by using percol (81% percol, 19% hypotonic buffer) and centrifugation at 10,000× g. Nuclei were then diluted in PBS and plated. Young's modulus of the nuclei was determined using atomic force microscopy (AFM). For strain experiments, cells were plated on BioFlex collagen-I-coated silicone plates.

4.7. RNA-Seq

Seven days after adipogenic and LIV treatment, following the above protocols, three samples per group were sent to Novogene for RNA extraction and sequencing. Quality control of raw data was done using FASTQC. Read alignment of the genome to the raw reads was done using STAR [53]. Read count generation was performed using feature counts, and differential gene expression analysis was performed using DESEQ2 [54]. For analysis using fragments per kilobase of transcript per million mapped reads (FPKM), data were assessed as previously described [55–58]. Briefly, RNA-seq data were analyzed using a Mayo Bioinformatics Core called MAPRSeq v.1.2.1 [59], which includes TopHat 2.0.6 alignment [60] and gene expression quantification using HTSeq software [61]. Normalized gene counts were obtained from MAPRSeq as FPKM. Hierarchical clustering and principal component analysis were assessed and visualized using ClustVis [62]. Genes with significant differential expression compared to non-LIV controls ($p < 0.05$, $\log_2FC > 1.0$) as detected by DESEQ2 were analyzed via STRING [34]. Biological and cellular gene clusters that had a false discovery rate (FDR) less than 0.05 were further subjected to supervised analysis to determine proper naming of clusters. Sequencing data were deposited in the Gene Expression Omnibus of the National Institute for Biotechnology Information (GSE157056).

4.8. Immunofluorescence

Twenty-four hours after siRNA treatment against lamin A/C protein, cells were fixed with 4% paraformaldehyde. Cells were permeabilized by incubation with 0.3% Triton X-100. Cells were incubated in a blocking serum in PBS with 5% donkey serum (017-000-121, Jackson Immuno Research Laboratories, West Grove, PA, USA). Primary antibody solutions were incubated on the cells for 1 h at 37 °C, followed by secondary antibody incubation of either Alexa Fluor 594 goat anti-rabbit (Invitrogen, Waltham, MA, USA) or Alexa Fluor 647 donkey anti-mouse. For nuclear staining, cells were incubated with NucBlue Hoechst stain (Thermo Fisher Scientific, Waltham, MA, USA). For actin staining, cells were incubated with Alexa Fluor 488-phalloidin (Life Technologies, Carlsbad, CA, USA). Primary and secondary concentrations were both 1:300.

4.9. Lipid Droplet Analysis

Seven days after adipogenic media and LIV treatment, cells were fixed and were stained with Oil Red O (Poly Scientific, Baywood, NY, USA, #k043), Lipid Spot 610 (Biotium, Fremont, CA, USA, #70069), and NucBlue Hoechst stain. Images were taken using a 20× objective and exported to quantify lipid droplet formation via a custom-made MATLAB program (MathWorks, Natick, MA, USA) previously published [63]. A minimum pixel intensity of 80 was used to isolate lipid droplet staining. The mean lipid droplet intensity per cell was calculated by dividing the sum of lipid droplet stain intensity by the nuclei count per image. For determining the effects of siLmna on lipid droplet formation, nuclear area, nuclear perimeter, and nuclear circularity, siCntl- and siLmna-treated cells were differentiated with previously stated adipogenic media and indomethacin (1 µg/mL) for 5 days. Cells were then stained for lamin A/C, as previously described, Lipid Spot 610, and NucBlue Hoeschst. Exported images were used to quantify lipid droplet formation, lamin A/C, nuclear area, nuclear perimeter, and nuclear circularity via the custom-made MATLAB program. A minimum pixel intensity of 80 was used to isolate lipid droplet staining and lamin A/C intensity.

4.10. Nuclear Morphology

To test the nuclear morphology to correlate with the mechanical constraint on the nucleus, as measured by AFM, MSCs were seeded at 3000 cells/cm² on plastic slide chambers (iBIDI µslide # 80421). Then, 72 h after siRNA treatment against lamin A/C protein, cells underwent immunofluorescence staining following the above protocols for lamin A/C and DNA (Hoechst 33342; Life Technologies, Carlsbad, CA, USA) and/or were stained against actin (Alexa Fluor 488-phalloidin; Life Technologies, Carlsbad, CA, USA). Z-stack confocal 3D images were obtained with Zeiss LSM 710 with a separation interval of 0.15 µm. Z-stack images were analyzed using IMARIS software.

4.11. Western Blotting

Whole-cell lysates were prepared using radio immunoprecipitation assay (RIPA) lysis buffer (150 mM NaCl, 50 mM Tris HCl, 1 mM EDTA, 0.24% sodium deoxycholate, 1% Igepal, pH 7.5). To protect the samples from protein degradation, NaF (25 mM), Na₃VO₄ (2 mM), aprotinin, leupeptin, pepstatin, and phenylmethylsulfonylfluoride (PMSF) were added to the lysis buffer. Western protein amounts were normalized to 15 µg through BCA protein assay (Thermo Fisher Scientific, Waltham, MA, USA; #23225). Cell fractionation protein amounts were normalized to 10 µg via detergent-compatible Bradford assay (Thermo Fisher Scientific, Waltham, MA, USA; #23246). LDHA and PARP were used as fractionation total loading protein controls for nuclear and cytoplasmic fractions, respectively. Whole-cell lysates (15 µg) were separated on 10% polyacrylamide gels and transferred to polyvinylidene difluoride (PVDF) membranes. Membranes were blocked with milk (5%, *w/v*) diluted in Tris-buffered saline containing Tween 20 (TBS-T, 0.05%). Blots were then incubated overnight at 4 °C with appropriate primary antibodies. Following primary antibody incubation, blots were washed and incubated with horseradish-peroxidase-conjugated secondary

antibody diluted at 1:5000 (Cell Signaling Technology) at RT for 1 h in 5% milk in TBST-T. Chemiluminescence was detected with ECL plus (Amersham Biosciences, Piscataway, NJ, USA). At least three separate experiments were used for densitometry analyses of Western blots, and densitometry was performed using NIH ImageJ software 1.52.

4.12. Statistical Analysis and Reproducibility

Results for densitometry were presented as the mean \pm SEM. Densitometry and other analyses were performed on at least three separate experiments. Differences between groups were identified by two-tailed Student's *t*-test. Analysis of nuclear morphology and Young's modulus measurement were performed using the Whitney–Mann test, and results were presented as the mean \pm STD. Differential gene expression analysis via DESEQ2 was done using Wald test. Image analysis groups were analyzed using the Kruskal–Wallis test. *p*-Values of less than 0.05 were considered significant. All experiments were conducted in triplicate to ensure reproducibility.

Supplementary Materials: The following are available online at <https://www.mdpi.com/article/10.3390/ijms22126580/s1>, Figure S1: Quantification of confocal images for SUN1, SUN2, and lamin A/C in siCtrl and siLmna groups; Figure S2: Representative photos of nuclei (blue, Hoechst 33342) for Figure 2a; Figure S3: Quantification of lamin A/C, lipid levels, and cell structural parameters during adipogenesis in siCtrl and siLmna groups; Figure S4: Full-size, annotated gene cluster for Figure 6b; Figure S5: Full-size, annotated gene cluster for Figure 6d; Figure S6: Full-size, annotated gene cluster for Figure 7b–d; Figure S7: Gene lists for Figure 6b,c; Figure S8: Unprocessed blots used in Figure 2, as obtained by LiCor C-DiGit blot scanner; Figure S9: Unprocessed blots used in Figure 3, as obtained by LiCor C-DiGit blot scanner; Figure S10: Unprocessed blots used in Figure 4, as obtained by LiCor C-DiGit blot scanner; Figure S11: Lmna FPKM levels for RNA-seq samples; Table S1: Table of biological and cellular pathways with FDR < 0.05 detected in STRING analysis from Figure 6b; Table S2: Table of top 72 biological and cellular pathways with FDR < 0.05 detected in STRING analysis from Figure 6d; Table S3: Table of biological and cellular pathways with FDR < 0.05 detected in STRING analysis from Figure 7c; Table S4: Table of biological and cellular pathways with FDR < 0.05 detected in STRING analysis from Figure 7d; Table S5: Cell culture and pharmacological reagents and their final concentrations; Table S6: Antibodies used and their final concentrations for Western blots; Table S7: Immunostaining antibodies and reagents and their final concentrations.

Author Contributions: Concept/design, data analysis/interpretation, manuscript writing, M.G.; manuscript writing, data analysis, final approval of manuscript, A.D. and A.J.v.W.; concept/design, data analysis/interpretation, final approval of manuscript, M.O.; data analysis, final approval of manuscript, B.S. and J.R.; final approval of manuscript, E.O.; concept/design, data analysis/interpretation, financial support, manuscript writing, final approval of manuscript, G.U. All authors have read and agreed to the published version of the manuscript.

Funding: This research was funded by the NIH (AG059923 and P20GM109095), the NSF (1929188 and 2025505 (G.U.), R01AR049069 (A.J.v.W.), and AR075803 (J.R.)), the Career Development Award in Orthopedics Research (A.D.), and the Scientific and Technological Research Council of Turkey 2214-A (M.O.).

Data Availability Statement: The datasets generated and/or analyzed during the current study are available from the corresponding author on reasonable request.

Conflicts of Interest: The authors declare no conflict of interest.

References

1. Shumaker, D.K.; Dechat, T.; Kohlmaier, A.; Adam, S.A.; Bozovsky, M.R.; Erdos, M.R.; Eriksson, M.; Goldman, A.E.; Khuon, S.; Collins, F.S.; et al. Mutant nuclear lamin A leads to progressive alterations of epigenetic control in premature aging. *Proc. Natl. Acad. Sci. USA* **2006**, *103*, 8703–8708. [[CrossRef](#)]
2. Schreiber, K.H.; Kennedy, B.K. When lamins go bad: Nuclear structure and disease. *Cell* **2013**, *152*, 1365–1375. [[CrossRef](#)]
3. De Sandre-Giovannoli, A.; Bernard, R.; Cau, P.; Navarro, C.; Amiel, J.; Boccaccio, I.; Lyonnet, S.; Stewart, C.L.; Munnich, A.; Le Merrer, M.; et al. Lamin a truncation in Hutchinson–Gilford progeria. *Science* **2003**, *300*, 2055. [[CrossRef](#)] [[PubMed](#)]
4. Constantinescu, D.; Gray, H.L.; Sammak, P.J.; Schatten, G.P.; Csoka, A.B. Lamin A/C expression is a marker of mouse and human embryonic stem cell differentiation. *Stem Cells* **2006**, *24*, 177–185. [[CrossRef](#)] [[PubMed](#)]

5. Chojnowski, A.; Ong, P.F.; Foo, M.X.R.; Liebl, D.; Hor, L.P.; Stewart, C.L.; Dreesen, O. Heterochromatin loss as a determinant of progerin-induced DNA damage in Hutchinson–Gilford Progeria. *Aging Cell* **2020**, *19*, e13108. [[CrossRef](#)] [[PubMed](#)]
6. Hilton, B.A.; Liu, J.; Cartwright, B.M.; Liu, Y.; Breitman, M.; Wang, Y.; Jones, R.; Tang, H.; Rusinol, A.; Musich, P.R.; et al. Progerin sequestration of PCNA promotes replication fork collapse and mislocalization of XPA in laminopathy-related progeroid syndromes. *FASEB J.* **2017**, *31*, 3882–3893. [[CrossRef](#)]
7. Sullivan, T.; Escalante-Alcalde, D.; Bhatt, H.; Anver, M.; Bhat, N.; Nagashima, K.; Stewart, C.L.; Burke, B. Loss of A-type lamin expression compromises nuclear envelope integrity leading to muscular dystrophy. *J. Cell Biol.* **1999**, *147*, 913–920. [[CrossRef](#)]
8. Sabatelli, P.; Lattanzi, G.; Ognibene, A.; Columbaro, M.; Capanni, C.; Merlini, L.; Maraldi, N.M.; Squarzoni, S. Nuclear alterations in autosomal-dominant Emery–Dreifuss muscular dystrophy. *Muscle Nerve* **2001**, *24*, 826–829. [[CrossRef](#)]
9. Verstraeten, V.L.; Ji, J.Y.; Cummings, K.S.; Lee, R.T.; Lammerding, J. Increased mechanosensitivity and nuclear stiffness in Hutchinson–Gilford progeria cells: Effects of farnesyltransferase inhibitors. *Aging Cell* **2008**, *7*, 383–393. [[CrossRef](#)]
10. Lee, J.S.; Hale, C.M.; Panorchan, P.; Khatau, S.B.; George, J.P.; Tseng, Y.; Stewart, C.L.; Hodzic, D.; Wirtz, D. Nuclear lamin A/C deficiency induces defects in cell mechanics, polarization, and migration. *Biophys. J.* **2007**, *93*, 2542–2552. [[CrossRef](#)]
11. Lammerding, J.; Schulze, P.C.; Takahashi, T.; Kozlov, S.; Sullivan, T.; Kamm, R.D.; Stewart, C.L.; Lee, R.T. Lamin A/C deficiency causes defective nuclear mechanics and mechanotransduction. *J. Clin. Investig.* **2004**, *113*, 370–378. [[CrossRef](#)]
12. Moghadam, F.H.; Tayebi, T.; Dehghan, M.; Eslami, G.; Nadri, H.; Moradi, A.; Vahedian-Ardakani, H.; Barzegar, K. Differentiation of C bone marrow mesenchymal stem cells into chondrocytes after short term culture in alkaline medium. *Int. J. Hematol. Oncol. Stem Cell Res.* **2014**, *8*, 12–19. [[PubMed](#)]
13. Akter, R.; Rivas, D.; Geneau, G.; Drissi, H.; Duque, G. Effect of lamin A/C knockdown on osteoblast differentiation and function. *J. Bone Miner. Res.* **2009**, *24*, 283–293. [[CrossRef](#)] [[PubMed](#)]
14. Li, W.; Yeo, L.S.; Vidal, C.; McCorquodale, T.; Herrmann, M.; Fatkin, D.; Duque, G. Decreased bone formation and osteopenia in lamin a/c-deficient mice. *PLoS ONE* **2011**, *6*, e19313. [[CrossRef](#)] [[PubMed](#)]
15. Bermeo, S.; Vidal, C.; Zhou, H.; Duque, G. Lamin A/C Acts as an Essential Factor in Mesenchymal Stem Cell Differentiation Through the Regulation of the Dynamics of the Wnt/ β -Catenin Pathway. *J. Cell. Biochem.* **2015**, *116*, 2344–2353. [[CrossRef](#)] [[PubMed](#)]
16. Patni, N.; Li, X.; Adams-Huet, B.; Vasandani, C.; Gomez-Diaz, R.A.; Garg, A. Regional Body Fat Changes and Metabolic Complications in Children with Dunnigan Lipodystrophy-Causing LMNA Variants. *J. Clin. Endocrinol. Metab.* **2019**, *104*, 1099–1108. [[CrossRef](#)] [[PubMed](#)]
17. Oldenburg, A.; Briand, N.; Sørensen, A.L.; Cahyani, I.; Shah, A.; Moskaug, J.Ø.; Collas, P. A lipodystrophy-causing lamin A mutant alters conformation and epigenetic regulation of the anti-adipogenic MIR335 locus. *J. Cell Biol.* **2017**, *216*, 2731–2743. [[CrossRef](#)] [[PubMed](#)]
18. Swift, J.; Ivanovska, I.L.; Buxboim, A.; Harada, T.; Dingal, P.C.D.P.; Pinter, J.; Pajeroski, J.D.; Spinler, K.R.; Shin, J.-W.; Tewari, M.; et al. Nuclear Lamin-A Scales with Tissue Stiffness and Enhances Matrix-Directed Differentiation. *Science* **2013**, *341*, 6149. [[CrossRef](#)]
19. Sen, B.; Xie, Z.; Case, N.; Styner, M.; Rubin, C.T.; Rubin, J. Mechanical signal influence on mesenchymal stem cell fate is enhanced by incorporation of refractory periods into the loading regimen. *J. Biomech.* **2011**, *44*, 593–599. [[CrossRef](#)]
20. Sen, B.; Xie, Z.; Case, N.; Ma, M.; Rubin, C.; Rubin, J. Mechanical strain inhibits adipogenesis in mesenchymal stem cells by stimulating a durable beta-catenin signal. *Endocrinology* **2008**, *149*, 6065–6075. [[CrossRef](#)]
21. Sen, B.; Guilluy, C.; Xie, Z.; Case, N.; Styner, M.; Thomas, J.; Oguz, I.; Rubin, C.; Burrridge, K.; Rubin, J. Mechanically induced focal adhesion assembly amplifies anti-adipogenic pathways in mesenchymal stem cells. *Stem Cells* **2011**, *29*, 1829–1836. [[CrossRef](#)] [[PubMed](#)]
22. Uzer, G.; Pongkitwitoon, S.; Ete Chan, M.; Judex, S. Vibration induced osteogenic commitment of mesenchymal stem cells is enhanced by cytoskeletal remodeling but not fluid shear. *J. Biomech.* **2013**, *46*, 2296–2302. [[CrossRef](#)]
23. Bas, G.; Loisate, S.; Hudon, S.F.; Woods, K.; Hayden, E.J.; Pu, X.; Beard, R.; Oxford, J.T.; Uzer, G. Low Intensity Vibrations Augment Mesenchymal Stem Cell Proliferation and Differentiation Capacity during in vitro Expansion. *Sci. Rep.* **2020**, *10*, 9369. [[CrossRef](#)] [[PubMed](#)]
24. Geiger, B.; Spatz, J.P.; Bershadsky, A.D. Environmental sensing through focal adhesions. *Nat. Rev. Mol. Cell Biol.* **2009**, *10*, 21–33. [[CrossRef](#)] [[PubMed](#)]
25. Hamadi, A.; Bouali, M.; Dontenwill, M.; Stoeckel, H.; Takeda, K.; Rondé, P. Regulation of focal adhesion dynamics and disassembly by phosphorylation of FAK at tyrosine 397. *J. Cell Sci.* **2005**, *118*, 4415–4425. [[CrossRef](#)]
26. Uzer, G.; Thompson, W.R.; Sen, B.; Xie, Z.; Yen, S.S.; Miller, S.; Bas, G.; Styner, M.; Rubin, C.T.; Judex, S.; et al. Cell Mechanosensitivity to Extremely Low-Magnitude Signals Is Enabled by a LINCed Nucleus. *Stem Cells* **2015**, *33*, 2063–2076. [[CrossRef](#)]
27. Uzer, G.; Fuchs, R.K.; Rubin, J.; Thompson, W.R. Concise Review: Plasma and Nuclear Membranes Convey Mechanical Information to Regulate Mesenchymal Stem Cell Lineage. *Stem Cells* **2016**, *34*, 1455–1463. [[CrossRef](#)] [[PubMed](#)]
28. Sen, B.; Xie, Z.; Case, N.; Thompson, W.R.; Uzer, G.; Styner, M.; Rubin, J. mTORC2 regulates mechanically induced cytoskeletal reorganization and lineage selection in marrow-derived mesenchymal stem cells. *J. Bone Miner. Res.* **2014**, *29*, 78–89. [[CrossRef](#)]
29. Thompson, W.R.; Yen, S.S.; Uzer, G.; Xie, Z.; Sen, B.; Styner, M.; Burrridge, K.; Rubin, J. LARG GEF and ARHGAP18 orchestrate RhoA activity to control mesenchymal stem cell lineage. *Bone* **2018**, *107*, 172–180. [[CrossRef](#)]
30. Tontonoz, P.; Spiegelman, B.M. Fat and Beyond: The Diverse Biology of PPAR γ . *Annu. Rev. Biochem.* **2008**, *77*, 289–312. [[CrossRef](#)]

31. Pagnotti, G.M.; Styner, M.; Uzer, G.; Patel, V.S.; Wright, L.E.; Ness, K.K.; Guise, T.A.; Rubin, J.; Rubin, C.T. Combating osteoporosis and obesity with exercise: Leveraging cell mechanosensitivity. *Nat. Rev. Endocrinol.* **2019**, *15*, 339–355. [[CrossRef](#)] [[PubMed](#)]
32. Uzer, G.; Bas, G.; Sen, B.; Xie, Z.; Birks, S.; Olcum, M.; McGrath, C.; Styner, M.; Rubin, J. Sun-mediated mechanical LINC between nucleus and cytoskeleton regulates β catenin nuclear access. *J. Biomech.* **2018**, *74*, 32–40. [[CrossRef](#)] [[PubMed](#)]
33. Baskan, O.; Mese, G.; Ozcivici, E. Low-intensity vibrations normalize adipogenesis-induced morphological and molecular changes of adult mesenchymal stem cells. *Proc. Inst. Mech. Eng. Part H J. Eng. Med.* **2017**, *231*, 160–168. [[CrossRef](#)]
34. von Mering, C.; Huynen, M.; Jaeggi, D.; Schmidt, S.; Bork, P.; Snel, B. STRING: A database of predicted functional associations between proteins. *Nucleic Acids Res.* **2003**, *31*, 258–261. [[CrossRef](#)] [[PubMed](#)]
35. Lammerding, J.; Fong, L.G.; Ji, J.Y.; Reue, K.; Stewart, C.L.; Young, S.G.; Lee, R.T. Lamins A and C but not lamin B1 regulate nuclear mechanics. *J. Biol. Chem.* **2006**, *281*, 25768–25780. [[CrossRef](#)]
36. Raharjo, W.H.; Enarson, P.; Sullivan, T.; Stewart, C.L.; Burke, B. Nuclear envelope defects associated with LMNA mutations cause dilated cardiomyopathy and Emery-Dreifuss muscular dystrophy. *J. Cell Sci.* **2001**, *114*, 4447–4457. [[CrossRef](#)]
37. Kim, J.-K.; Louhghalam, A.; Lee, G.; Schafer, B.W.; Wirtz, D.; Kim, D.-H. Nuclear lamin A/C harnesses the perinuclear apical actin cables to protect nuclear morphology. *Nat. Commun.* **2017**, *8*, 2123. [[CrossRef](#)]
38. Corne, T.D.J.; Sieprath, T.; Vandenbussche, J.; Mohammed, D.; Te Lindert, M.; Gevaert, K.; Gabriele, S.; Wolf, K.; De Vos, W.H. Deregulation of focal adhesion formation and cytoskeletal tension due to loss of A-type lamins. *Cell Adhes. Migr.* **2017**, *11*, 447–463. [[CrossRef](#)]
39. Chancellor, T.J.; Lee, J.; Thodeti, C.K.; Lele, T. Actomyosin tension exerted on the nucleus through nesprin-1 connections influences endothelial cell adhesion, migration, and cyclic strain-induced reorientation. *Biophys. J.* **2010**, *99*, 115–123. [[CrossRef](#)]
40. Fan, Y.; Abrahamsen, G.; Mills, R.; Calderón, C.C.; Tee, J.Y.; Leyton, L.; Murrell, W.; Cooper-White, J.; McGrath, J.J.; Mackay-Sim, A. Focal Adhesion Dynamics Are Altered in Schizophrenia. *Biol. Psychiatry* **2013**, *74*, 418–426. [[CrossRef](#)]
41. Wang, W.; Shi, Z.; Jiao, S.; Chen, C.; Wang, H.; Liu, G.; Wang, Q.; Zhao, Y.; Greene, M.I.; Zhou, Z. Structural insights into SUN-KASH complexes across the nuclear envelope. *Cell Res.* **2012**, *22*, 1440–1452. [[CrossRef](#)] [[PubMed](#)]
42. Haque, F.; Lloyd, D.J.; Smallwood, D.T.; Dent, C.L.; Shanahan, C.M.; Fry, A.M.; Trembath, R.C.; Shackleton, S. SUN1 Interacts with Nuclear Lamin A and Cytoplasmic Nesprins to Provide a Physical Connection between the Nuclear Lamina and the Cytoskeleton. *Mol. Cell. Biol.* **2006**, *26*, 3738–3751. [[CrossRef](#)] [[PubMed](#)]
43. Liang, Y.; Chiu, P.H.; Yip, K.Y.; Chan, S.Y. Subcellular Localization of SUN2 Is Regulated by Lamin A and Rab5. *PLoS ONE* **2011**, *6*, e20507. [[CrossRef](#)] [[PubMed](#)]
44. Cartwright, T.; Senussi, O.; Grady, M.D. The Mechanism of the Inactivation of Human Fibroblast Interferon by Mechanical Stress. *J. Gen. Virol.* **1977**, *36*, 317–321. [[CrossRef](#)]
45. Ruijter, J.M.; Ruiz-Villalba, A.; van den Hoff, A.J.J.; Gunst, Q.D.; Wittwer, C.T.; van den Hoff, M.J.B. Removal of artifact bias from qPCR results using DNA melting curve analysis. *FASEB J.* **2019**, *33*, 14542–14555. [[CrossRef](#)]
46. Gaby, J.C.; Buckley, D.H. The Use of Degenerate Primers in qPCR Analysis of Functional Genes Can Cause Dramatic Quantification Bias as Revealed by Investigation of *nifH* Primer Performance. *Microb. Ecol.* **2017**, *74*, 701–708. [[CrossRef](#)]
47. Asmann, Y.W.; Klee, E.W.; Thompson, E.A.; Perez, E.A.; Middha, S.; Oberg, A.L.; Therneau, T.M.; Smith, D.I.; Poland, G.A.; Wieben, E.D.; et al. 3' tag digital gene expression profiling of human brain and universal reference RNA using Illumina Genome Analyzer. *BMC Genom.* **2009**, *10*, 531. [[CrossRef](#)]
48. Wu, A.R.; Neff, N.F.; Kalisky, T.; Dalerba, P.; Treutlein, B.; Rothenberg, M.E.; Mburu, F.M.; Mantalas, G.L.; Sim, S.; Clarke, M.F.; et al. Quantitative assessment of single-cell RNA-sequencing methods. *Nat. Methods* **2014**, *11*, 41–46. [[CrossRef](#)]
49. Shi, Y.; He, M. Differential gene expression identified by RNA-Seq and qPCR in two sizes of pearl oyster (*Pinctada fucata*). *Gene* **2014**, *538*, 313–322. [[CrossRef](#)]
50. Wang, Z.; Gerstein, M.; Snyder, M. RNA-Seq: A revolutionary tool for transcriptomics. *Nat. Rev. Genet.* **2009**, *10*, 57–63. [[CrossRef](#)] [[PubMed](#)]
51. Griffith, M.; Griffith, O.L.; Mwenifumbo, J.; Goya, R.; Morrissy, A.S.; Morin, R.D.; Corbett, R.; Tang, M.J.; Hou, Y.C.; Pugh, T.J.; et al. Alternative expression analysis by RNA sequencing. *Nat. Methods* **2010**, *7*, 843–847. [[CrossRef](#)]
52. Peister, A.; Mellad, J.A.; Larson, B.L.; Hall, B.M.; Gibson, L.F.; Prockop, D.J. Adult stem cells from bone marrow (MSCs) isolated from different strains of inbred mice vary in surface epitopes, rates of proliferation, and differentiation potential. *Blood* **2004**, *103*, 1662–1668. [[CrossRef](#)]
53. Dobin, A.; Davis, C.A.; Schlesinger, F.; Drenkow, J.; Zaleski, C.; Jha, S.; Batut, P.; Chaisson, M.; Gingeras, T.R. STAR: Ultrafast universal RNA-seq aligner. *Bioinformatics* **2013**, *29*, 15–21. [[CrossRef](#)]
54. Love, M.I.; Huber, W.; Anders, S. Moderated estimation of fold change and dispersion for RNA-seq data with DESeq2. *Genome Biol.* **2014**, *15*, 550. [[CrossRef](#)]
55. Dudakovic, A.; Camilleri, E.; Riester, S.M.; Lewallen, E.A.; Kvasha, S.; Chen, X.; Radel, D.J.; Anderson, J.M.; Nair, A.A.; Evans, J.M.; et al. High-resolution molecular validation of self-renewal and spontaneous differentiation in clinical-grade adipose-tissue derived human mesenchymal stem cells. *J. Cell. Biochem.* **2014**, *115*, 1816–1828. [[CrossRef](#)]
56. Wang, H.; Rodríguez, A. Identifying pediatric cancer clusters in Florida using loglinear models and generalized lasso penalties. *Stat. Public Policy* **2014**, *1*, 86–96. [[CrossRef](#)] [[PubMed](#)]

57. Dudakovic, A.; Camilleri, E.T.; Paradise, C.R.; Samsonraj, R.M.; Gluscevic, M.; Paggi, C.A.; Begun, D.L.; Khani, F.; Pichurin, O.; Ahmed, F.S.; et al. Enhancer of zeste homolog 2 (*Ezh2*) controls bone formation and cell cycle progression during osteogenesis in mice. *J. Biol. Chem.* **2018**, *293*, 12894–12907. [[CrossRef](#)] [[PubMed](#)]
58. Dennison, E.; Cooper, C. Epidemiology of osteoporotic fractures. *Horm. Res.* **2000**, *54*, 58–63. [[CrossRef](#)] [[PubMed](#)]
59. Kalari, K.R.; Nair, A.A.; Bhavsar, J.D.; O'Brien, D.R.; Davila, J.I.; Bockol, M.A.; Nie, J.; Tang, X.; Baheti, S.; Doughty, J.B.; et al. MAP-RSeq: Mayo Analysis Pipeline for RNA sequencing. *BMC Bioinform.* **2014**, *15*, 224. [[CrossRef](#)] [[PubMed](#)]
60. Kim, D.; Pertea, G.; Trapnell, C.; Pimentel, H.; Kelley, R.; Salzberg, S.L. TopHat2: Accurate alignment of transcriptomes in the presence of insertions, deletions and gene fusions. *Genome Biol.* **2013**, *14*, R36. [[CrossRef](#)] [[PubMed](#)]
61. Anders, S.; Pyl, P.T.; Huber, W. HTSeq—A Python framework to work with high-throughput sequencing data. *Bioinformatics* **2015**, *31*, 166–169. [[CrossRef](#)] [[PubMed](#)]
62. Metsalu, T.; Vilo, J. ClustVis: A web tool for visualizing clustering of multivariate data using Principal Component Analysis and heatmap. *Nucleic Acids Res.* **2015**, *43*, W566–W570. [[CrossRef](#)] [[PubMed](#)]
63. Thompson, M.; Woods, K.; Newberg, J.; Oxford, J.T.; Uzer, G. Low-intensity vibration restores nuclear YAP levels and acute YAP nuclear shuttling in mesenchymal stem cells subjected to simulated microgravity. *NPJ Microgravity* **2020**, *6*, 35. [[CrossRef](#)] [[PubMed](#)]