

CORRECTION

Open Access



Correction to: Transmission dynamics and control of two epidemic waves of SARS-CoV-2 in South Korea

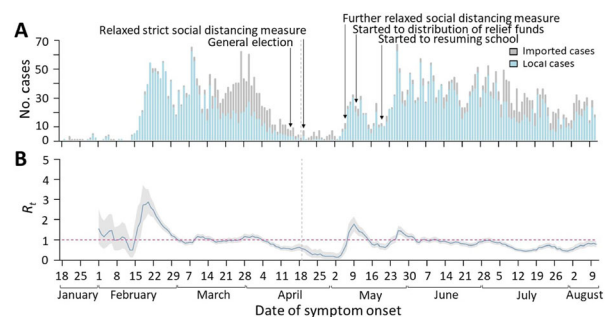
Sukhyun Ryu^{1*}, Sheikh Taslim Ali^{2,3}, Eunbi Noh^{1,4}, Dasom Kim¹, Eric H. Y. Lau^{2,3} and Benjamin J. Cowling^{2,3}

Correction to: BMC Infect Dis. 21, 485 (2021)
<https://doi.org/10.1186/s12879-021-06204-6>

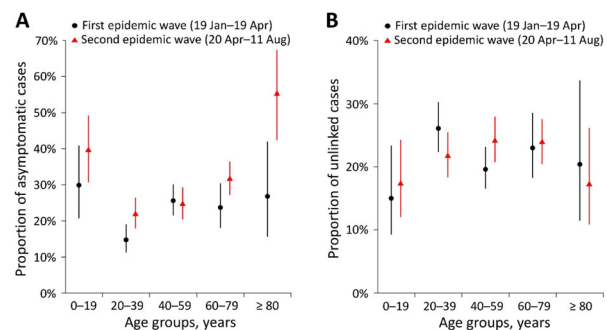
Following publication of the original article [1], the authors identified errors in the abstract, article body, Fig. 1, Fig 5. and Table S6.

- The typo “24%” in the 1st page, 3rd paragraph, should be written as ‘25%’.
- The typo “547 and 642 cases” in the 3rd page, left-hand column, 3rd paragraph, should be written as ‘555 and 634’.
- The typo “65 clusters”, “36.9%”, “26.1%”, and “10.7%” in the 3rd page, right-hand column, 3rd paragraph, should be written as ‘67 clusters’, ‘35.8%’, ‘25.4%’, and ‘10.5%’, respectively.
- The typo “758” in the 3rd page, right-hand column, 5th paragraph, and “22.5%” in the 4th page, left-hand column, 1st paragraph should be written as ‘916’, and ‘25.3%’.
- The typo “708 infector-infectee pairs”, “345 pairs”, and “363 pairs” in the Fig. 3. legend, in the 5th page, left-hand column, should be written as ‘698 infector-infectee pairs’, ‘341 pairs’, and ‘357 pairs’, respectively.
- The typo “547 imported cases” and “642 imported cases” in the 5th page, right-hand column, 1st paragraph, should be written as ‘555 imported cases’ and ‘634 imported cases’, respectively.

- The corrected Fig. 1 is given below.



- The corrected Fig. 5 is given below



- The corrected Table S6 is given below.

The original article can be found online at <https://doi.org/10.1186/s12879-021-06204-6>.

* Correspondence: gentryu@onehealth.or.kr

¹Department of Preventive Medicine, Konyang University College of Medicine, Daejeon 35365, Republic of Korea

Full list of author information is available at the end of the article



© The Author(s). 2021 **Open Access** This article is licensed under a Creative Commons Attribution 4.0 International License, which permits use, sharing, adaptation, distribution and reproduction in any medium or format, as long as you give appropriate credit to the original author(s) and the source, provide a link to the Creative Commons licence, and indicate if changes were made. The images or other third party material in this article are included in the article's Creative Commons licence, unless indicated otherwise in a credit line to the material. If material is not included in the article's Creative Commons licence and your intended use is not permitted by statutory regulation or exceeds the permitted use, you will need to obtain permission directly from the copyright holder. To view a copy of this licence, visit <http://creativecommons.org/licenses/by/4.0/>. The Creative Commons Public Domain Dedication waiver (<http://creativecommons.org/publicdomain/zero/1.0/>) applies to the data made available in this article, unless otherwise stated in a credit line to the data.

Age group (years)	First epidemic wave			Second epidemic wave		
	No. of unlinked cases	No. of confirmed cases	Proportion of unlinked (95% CI ¹), %	No. of unlinked cases	No. of confirmed cases	Proportion of unlinked (95% CI ¹), %
0–19	15	100	15.0 (9.3–23.3)	26	150	17.3 (12.1–24.2)
20–39	124	475	26.1 (22.4–30.2)	117	539	21.7 (18.4–25.4)
40–59	113	576	19.6 (16.6–23.1)	133	551	24.1 (20.8–27.9)
60–79	60	261	23.0 (18.3–28.5)	136	570	23.9 (20.5–27.5)
≥80	10	49	20.4 (11.5–33.6)	16	93	17.2 (10.9–26.1)
NA	4	22	18.2 (7.3–38.5)	162	427	37.9 (33.5–42.6)
Overall	326	1483	22.0 (19.9–24.2)	590	2330	25.3 (23.6–27.1)

Author details

¹Department of Preventive Medicine, Konyang University College of Medicine, Daejeon 35365, Republic of Korea. ²WHO Collaborating Centre for Infectious Disease Epidemiology and Control, Li Ka Shing Faculty of Medicine, School of Public Health, The University of Hong Kong, Hong Kong, Hong Kong, Special Administrative Region of China. ³Laboratory of Data Discovery for Health, Hong Kong Science and Technology Park, New Territories, Hong Kong, Special Administrative Region of China. ⁴Graduate School of Public Health, Seoul National University, Seoul 08826, Republic of Korea.

Published online: 07 July 2021

Reference

1. Ryu S, Ali ST, Noh E, Kim D, Lau EHY, Cowling BJ. Transmission dynamics and control of two epidemic waves of SARS-CoV-2 in South Korea. *BMC Infect Dis.* 2021;21:485. <https://doi.org/10.1186/s12879-021-06204-6>.