



MULTI-PHACET: multidimensional clinical phenotyping of hospitalised acute COPD exacerbations

Martin I. MacDonald ^{1,2,3}, Christian R. Osadnik ^{1,4}, Lauren Bulfin ¹, Elizabeth Leahy¹, Paul Leong¹, Eskandarain Shafuddin^{1,2}, Kais Hamza⁵, Paul T. King^{1,2,3} and Philip G. Bardin ^{1,2,3}

¹Monash Lung and Sleep, Monash Health, Melbourne, Australia. ²Dept of Medicine, Monash University, Melbourne, Australia. ³Hudson Institute, Melbourne, Australia. ⁴Dept of Physiotherapy, Monash University, Melbourne, Australia. ⁵Statistical Services, Monash University, Melbourne, Australia.

Corresponding author: Martin I. MacDonald (macdonald.martin@gmail.com)



Shareable abstract (@ERSpublications)

Hospitalised #AECOPD present as complex multidimensional clinical phenotypes, often comprising multiple distinct aetiologies. Profiling AECOPDs according to their multifactorial aetiological components has important prognostic and therapeutic implications. <https://bit.ly/3nIHEnO>

Cite this article as: MacDonald MI, Osadnik CR, Bulfin L, et al. MULTI-PHACET: multidimensional clinical phenotyping of hospitalised acute COPD exacerbations. *ERJ Open Res* 2021; 7: 00198-2021 [DOI: 10.1183/23120541.00198-2021].

Copyright ©The authors 2021

This version is distributed under the terms of the Creative Commons Attribution Non-Commercial Licence 4.0. For commercial reproduction rights and permissions contact permissions@ersnet.org

This article has supplementary material available from openres.ersjournals.com

Editorial comment in *ERJ Open Res* 2021; 7: 00362-2021 [<https://doi.org/10.1183/23120541.00362-2021>].

Received: 22 March 2021
Accepted: 27 April 2021

Abstract

Background The generic term “exacerbation” does not reflect the heterogeneity of acute exacerbations of COPD (AECOPD). We utilised a novel algorithmic strategy to profile exacerbation phenotypes based on underlying aetiologies.

Methods Patients hospitalised for AECOPD (n=146) were investigated for aetiological contributors summarised in a mnemonic acronym ABCDEFGX (A: airway virus; B: bacterial; C: co-infection; D: depression/anxiety; E: eosinophils; F: failure (cardiac); G: general environment; X: unknown). Results from clinical investigations were combined to construct AECOPD phenotypes. Relationships to clinical outcomes were examined for both composite phenotypes and their specific aetiological components. Aetiologies identified at exacerbation were reassessed at outpatient follow-up.

Results Hospitalised AECOPDs were remarkably diverse, with 26 distinct phenotypes identified. Multiple aetiologies were common (70%) and unidentifiable aetiology rare (4.1%). If viruses were detected (29.5%), patients had longer hospitalisation (7.7±5.6 versus 6.0±3.9 days, p=0.03) despite fewer “frequent exacerbators” (9.3% versus 37%, p=0.001) and lower mortality at 1 year (p=0.03). If bacterial infection was found (40.4%), patients were commonly “frequent exacerbators” (44% versus 18.4%, p=0.001). Eosinophilic exacerbations (28%) were associated with lower pH (7.32±0.06 versus 7.36±0.09, p=0.04), higher venous carbon dioxide tension (P_{vCO_2}) (53.7±10.5 versus 48.8±12.8, p=0.04), greater noninvasive ventilation (NIV) usage (34.1% versus 18.1%) but shorter hospitalisation (4 (3–5) versus 6 (4–9) days, p<0.001) and lower infection rates (41.4% versus 80.9%, p<0.0001). Cardiac dysfunction and severe anxiety/depression were common in both infective and non-infective exacerbations. Characteristics identified at exacerbation often persisted after recovery.

Conclusions Hospitalised AECOPDs have numerous causes, often in combination, that converge in complex, multi-faceted phenotypes. Clinically important differences in outcomes suggest that a phenotyping strategy based on aetiologies can enhance AECOPD management.

Introduction

COPD is a complex and heterogeneous disease. During acute exacerbations of COPD (AECOPDs), additional complexity ensues given diverse exacerbation aetiologies and comorbidities. Stable COPD is increasingly recognised as encompassing diverse disease phenotypes [1]; however the term “acute exacerbation of COPD” remains generic with a nonspecific definition [2]. The complexity and heterogeneity of AECOPDs is not yet reflected in either clinical practice or clinical research.



We have previously proposed individualised phenotyping of hospitalised AECOPDs according to aetiological contributors [3, 4]. While studies have explored phenotyping strategies based on simple microbiological classification [5, 6], a comprehensive personalised approach encompassing additional factors such as cardiac disease, mood disorders or inadequate social support has not been reported.

We hypothesised that an algorithmic approach using simple investigations would elucidate the multifactorial complexity of AECOPD aetiology, with prognostic and therapeutic implications.

Methods

Study population

Patients hospitalised for AECOPD were recruited to a prospective observational study approved by our hospital's Human Research Ethics Committee (HREC13134A). Written informed consent was obtained.

Inclusion required a post-bronchodilator forced expiratory ratio <0.7 verified by spirometry performed when clinically stable [2]. Exclusion criteria included overt left ventricular failure or acute myocardial infarction. Owing to the need for informed consent, patients mechanically ventilated at initial presentation were excluded. Sufficient cognitive capacity to complete questionnaires was required. Infiltrates on chest radiograph (CXR) were permitted.

Clinical outcomes recorded included rates of noninvasive ventilation (NIV), mechanical ventilation, inpatient mortality, length of hospital stay, readmissions and survival for 12 months following hospital discharge. The research team did not influence clinical care, which was at the discretion of the attending physicians. A follow-up assessment when clinically stable was offered to all patients. Hospitalisations in the 12-month period after hospital discharge were identified by review of electronic health records. Survival at 12 months post hospital discharge was determined by review of electronic health records and patient phone calls.

Study design

Patient recruitment and participation are shown in figure 1.

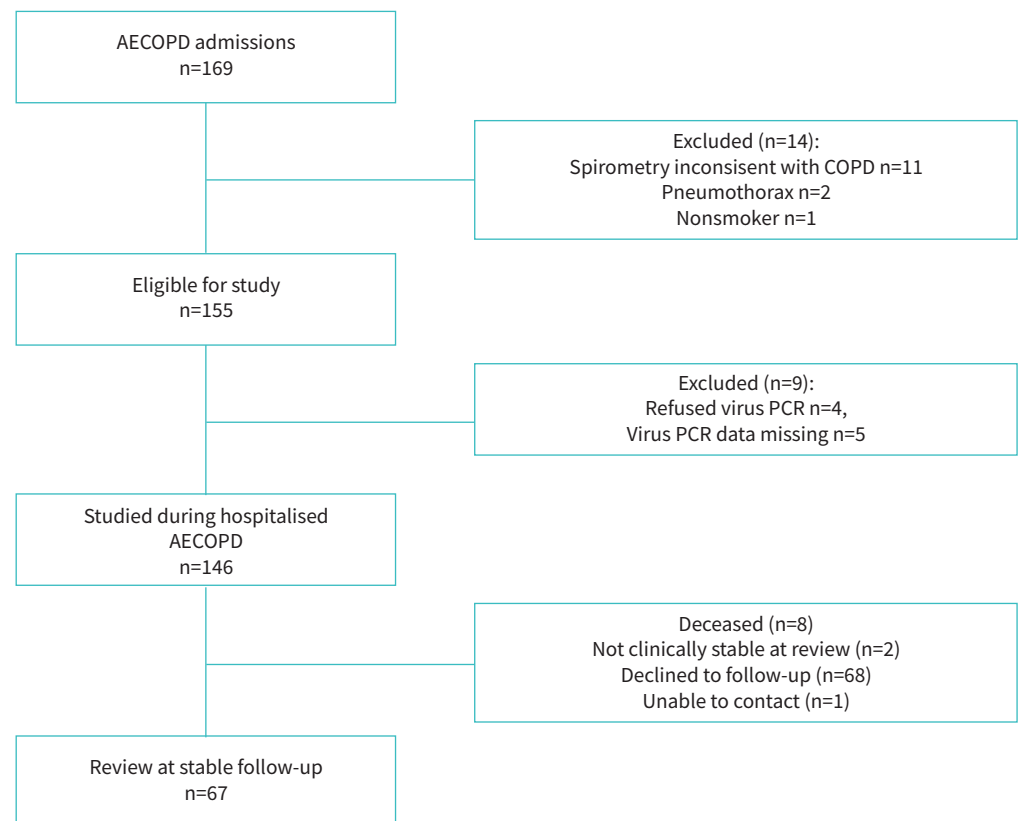


FIGURE 1 Consolidated Standards of Reporting Trials diagram of patient recruitment and participation. AECOPD: acute exacerbations of COPD.

We assessed attributable causes of hospitalised AECOPDs using the mnemonic acronym ABCDEFGX (A: airway virus; B: bacterial; C: co-infection; D: depression/anxiety; E: eosinophils; F: failure (cardiac); G: general environment; X: unknown) [3]. Since routine computed tomography (CT) pulmonary angiography may not be justified in AECOPD, we revised our originally published acronym [3] by substituting “E: eosinophils” in place of the former “E: embolism (pulmonary)”. Patients were assigned a final composite phenotype by combining all aetiological factors that were identified (e.g. bacterial infection (B) and severe depression/anxiety symptoms (D): phenotype “BD”).

Phenotyping strategy

Demographic variables, comorbidities, exacerbation history and pharmacotherapy were obtained from patient interviews and hospital case records. Study investigators administered the COPD Assessment Tool (CAT) [7], Hospital Anxiety and Depression Scale (HADS) [8] and Medical Research Council Dyspnoea (MRC) scale [9]. Results from nasopharyngeal virus PCR (146 out of 146), spontaneously expectorated sputum culture (136 out of 146), C-reactive protein (CRP) and fever ($\geq 38^{\circ}\text{C}$) (both 146 out of 146) were used to identify aetiologies “A” (airway virus), “B” (bacteria) or “C” (co-infection) (figure 2). Inevitably, many AECOPDs have clinical features of infection without identification of a specific microorganism. We assigned putative “B” (bacterial) aetiology if fever or CRP $\geq 20\text{ mg}\cdot\text{dL}^{-1}$ [10] was recorded and virus negative. Identification of “D” (depression/anxiety) was based on HADS scores at hospital admission (HADS A/D ≥ 15 or combined HADS Total ≥ 27 , successfully completed for 134 out of 146). Although

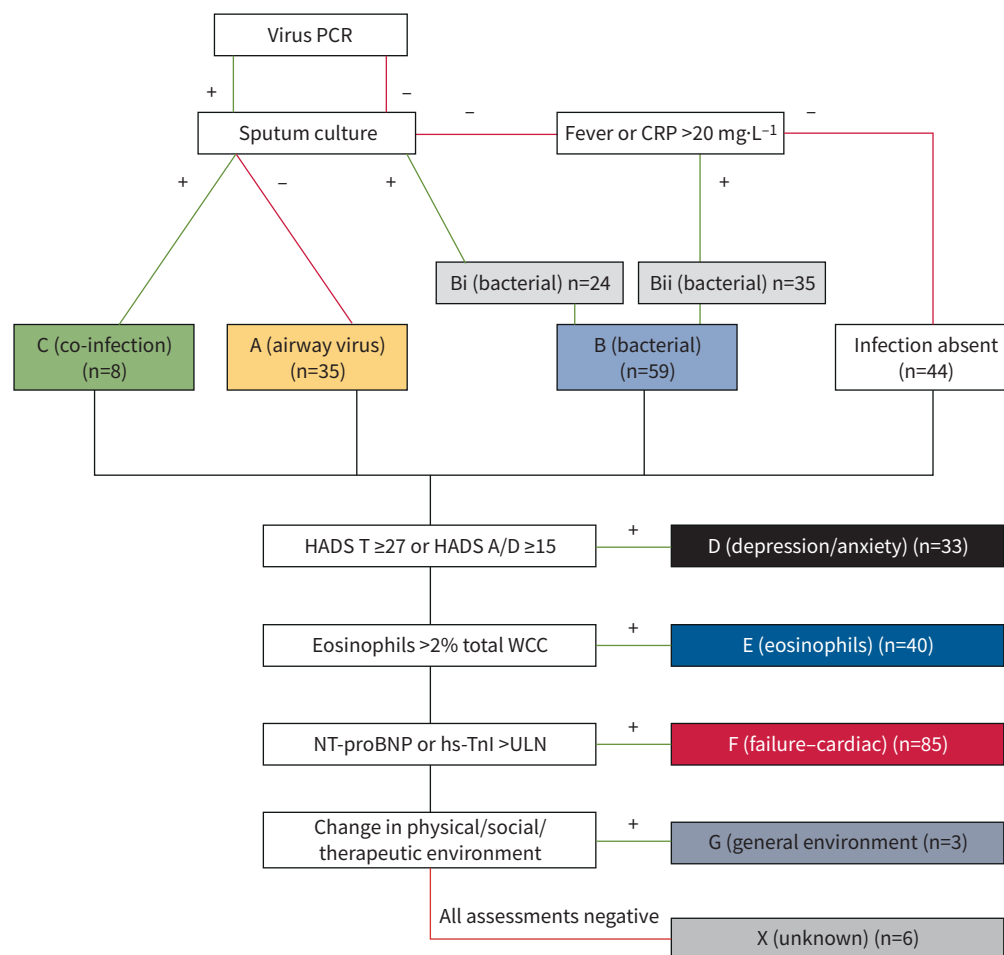


FIGURE 2 Aetiologies identified based on ABCDEFGX acronym in patients hospitalised with acute exacerbations of COPD (AECOPD). MCS: microscopy and culture of sputum; CRP: C-reactive protein; HADS: Hospital Anxiety and Depression Scale; WCC: white cell count; NT-proBNP: N-terminal pro-brain natriuretic peptide; hs-TnI: high sensitivity troponin I; Bi: sputum culture positive; Bii: fever or CRP $>20\text{ mg}\cdot\text{dL}^{-1}$ with negative virus PCR; ULN: upper limits of normal.

not specifically validated for AECOPD hospitalisations, we chose high threshold values for HADS previously shown to have 95% specificity for verified anxiety/depression in an inpatient population [11]. Eosinophils were measured on the first full blood count in 146 out of 146 with “E” assigned when eosinophils >2% total white cell count [5]. Investigation for pulmonary embolism was at the discretion of the treating team and not part of the algorithmic investigational approach. Cardiac biomarker analysis was performed on blood taken at initial hospital presentation where sufficient serum was available (119 out of 146). We identified cardiac dysfunction “F” (failure) when high-sensitivity troponin I (hs-TnI) and/or N-terminal pro-brain natriuretic peptide (NT-proBNP) [12] were above age and gender adjusted upper limits of normal (ULN) [13, 14]. Acute disruption to the patient’s physical, social or therapeutic environment was assessed in 146 out of 146 and aetiology “G” (general environment) assigned if deemed causative to hospitalisation. Exacerbations with no aetiological factor identifiable were categorised “X” (unknown).

Analysis

Comparisons between groups were made employing unpaired t-tests and one-way analysis of variance (ANOVA) for normally distributed data or Mann–Whitney and Kruskal–Wallis testing for non-parametric data. Chi-square analyses were used for categorical data. Blood and questionnaire results from acute *versus* stable disease state were analysed *via* Pearson correlation coefficients. Time-to-event survival analyses were conducted using Kaplan–Meier methods and log-rank tests. Data are presented as number (percentage), mean±standard deviation (SD) or median (interquartile range, IQR), where appropriate. Statistical significance was accepted at $p<0.05$. Analyses were conducted on Stata MP 14.1 (Statacorp, Texas, USA).

Results

Study cohort, aetiologies and phenotypes

Overall 169 AECOPD admissions were enrolled, with 146 patients included (figure 1). Twenty-three patients were excluded, chiefly because they failed to meet spirometric criteria for a diagnosis of COPD or lacked viral swab results. Demographics, comorbidities and pharmacotherapy are shown (table 1).

A flow diagram for assigning aetiological components of phenotypes is shown (figure 2). The process identified a large number of distinct phenotypes (total 26) based on various combinations of six underlying aetiologies (figure 3). Phenotypes consisting of a single aetiology were noted in a minority (38 out of 146, 26.0%).

TABLE 1 Baseline characteristics of 146 patients enrolled during acute exacerbations of COPD (AECOPD)

Demographics		Comorbidities		Medications	
Age years	71.8±10.4	Bronchiectasis	16 (10.3)	LAMA	133 (85.8)
Male	97 (62.6)	OSA	14 (9.0)	LABA	129 (83.2)
BMI kg·m ⁻²	24.8±6.5	Hypertension	71 (45.8)	ICS	126 (81.3)
FEV ₁ L	1.1±0.5	AF/flutter	19 (12.3)	OCS ^f	13 (8.4)
FEV ₁ % pred	45.2±18.6	IHD	43 (27.7)	Antibiotic ^f	5 (3.2)
T _{LCO} % pred	38.3±16.2	Cardiac failure	32 (20.6)	Antiplatelet	55 (35.5)
LTOT	19 (12)	CVD	15 (9.7)	Anticoagulant	18 (11.6)
mMRCd score median (interquartile range)	4 (3–5)	Diabetes	29 (18.7)	β-blocker	19 (12.3)
Current smoker	48 (31)	Malignancy [¶]	15 (9.7)	Ivabradine	4 (2.6)
Former smoker	117 (69)	Renal failure [†]	3 (1.9)	Ca ²⁺ RA	13 (8.2)
Smoking history pack-years	44±26	Anxiety	36 (23.2)	ACE-I/ARB	52 (33.5)
AECOPDs in previous year		Depression	35 (22.6)	Statin	57 (36.8)
Hospital	1.5±2.3	Alcohol misuse	12 (7.7)	Loop diuretic	33 (21.3)
Community	1.7±2.5	Substance misuse	2 (1.3)	Benzodiazepine ^{##}	20 (12.6)
Frequent exacerbator [#]	46 (29.7)	Other psychiatric disorder [§]	3 (1.9)	Antidepressant/antipsychotic	39 (24.5)

Data are presented as mean±SD or n (%), unless otherwise stated. BMI: body mass index; FEV₁: forced expiratory volume in 1 s; T_{LCO}: transfer factor of the lung for carbon monoxide; LTOT: long-term oxygen therapy; mMRCd: modified Medical Research Council dyspnoea scale; OSA: obstructive sleep apnoea; AF: atrial fibrillation; IHD: ischaemic heart disease; CVD: cerebrovascular disease; LAMA: long-acting muscarinic antagonist; LABA: long-acting β₂-agonist; ICS: inhaled corticosteroid; OCS: oral corticosteroid; Ca²⁺RA: calcium receptor antagonist; ACE-I: angiotensin-converting enzyme inhibitor; ARB: angiotensin receptor blocker. #: two or more AECOPD hospitalisations in the previous year; ¶: receiving treatment or palliation; †: estimated glomerular filtration rate <30 mL·min⁻¹; §: bipolar affective disorder, schizophrenia or post-traumatic stress disorder; ^f: maintenance; ^{##}: excluding nocte temazepam.

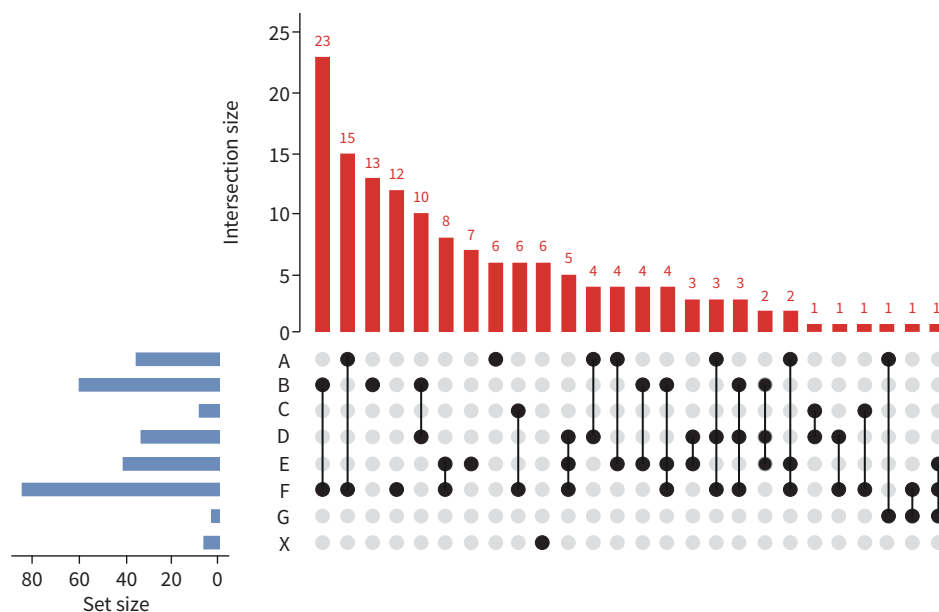


FIGURE 3 Distribution and combinations of identified phenotypes among 146 hospitalised acute exacerbations of COPD. A: airway virus; B: bacterial; C: co-infection; D: depression/anxiety; E: eosinophils; F: failure (cardiac); G: general environment; X: unknown.

Two (74 out of 146 patients, 50.7%) or three aetiologies (27 out of 146 patients, 18.5%) were common and no identifiable aetiology was rare (6 out of 146, 4.1%).

Outcomes associated with phenotypes

We first evaluated whether composite phenotypes (rather than individual aetiologies) were associated with clinical outcomes. The large number of phenotypes and resultant small populations in each phenotype precluded meaningful statistical analyses, but descriptive summary data are shown for the 10 most common phenotypes (representing 72.6% of study cohort, supplementary table S1). A higher cumulative number of aetiologies did not show association with clinical outcomes.

Outcomes associated with individual aetiologies

Individual aetiologies (rather than complex phenotypes) are likely to be more informative in a smaller cohort. We therefore compared exacerbations *with versus without* individual aetiological components.

Patients with virus infection (43 out of 146, 29.5%) were less commonly frequent hospitalised exacerbators (9.3% *versus* 37%, $p=0.001$), had lower baseline MRCD scores (3 (2–4) *versus* 4 (3–5), $p=0.0007$) and less domiciliary oxygen use (7% *versus* 32%, $p=0.001$). Despite this favourable profile, they had longer hospitalisation (7.7±5.6 *versus* 6.0±3.9, $p=0.02$), even after exclusion of those with bacterial co-infection ($n=8$, 7.9±6.1 *versus* 6.0±3.9, $p=0.03$). Their mortality at 12 months post hospital discharge was lower (2 out of 43 (4.7%) *versus* 20 out of 103 (19.4%), $p=0.02$). Survival curves over 12 months post-discharge are shown for virus (including co-infection) ($n=43$) *versus* bacterial only ($n=59$) *versus* non-infective ($n=44$) AECOPDs (figure 4, $p=0.03$).

Bacterial aetiology was assigned in 59 out of 146 patients (40.4%), of whom 24 out of 59 patients (40.7%) had positive sputum culture (Bi, figure 2). These patients were more likely to be frequent hospitalised exacerbators (44% *versus* 18.4%, $p=0.001$), had higher baseline MRCD scores (5 (4–5) *versus* 4 (3–5), $p=0.002$) and higher prevalence of diagnosed ischaemic heart disease (53.8% *versus* 35.6%, $p=0.045$) and cardiac failure (57.1% *versus* 36.4%, $p=0.045$).

Those with combined virus and bacterial infection (co-infection) had higher white cell count (WCC) (14.7±3.7 *versus* 11.4±4.4, $p=0.008$), neutrophils (11.7±2.6 *versus* 8.6±3.4, $p=0.01$) and CRP (112 (65–167) *versus* 18 (4.6–69), $p=0.004$). Specific viruses and bacteria detected are shown supplementary table S2.

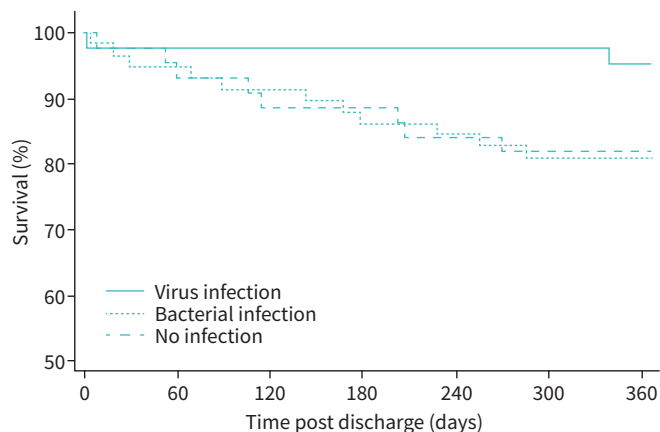


FIGURE 4 Survival 12 months post hospital discharge based on presence or absence of infection in acute exacerbations of COPD.

HADS scores were higher in those with diagnosed psychiatric comorbidity (20.4 ± 8.7 versus 14.6 ± 8.1 , $p=0.0001$, supplementary table S3). HADS scores were above the threshold to assign aetiology “D” in 33 out of 136 patients (24.3%), of whom only 14 out of 33 (42.4%) were taking antidepressant or anxiolytic medication. Patients featuring aetiology (D) reported higher (“worse”) total CAT scores (34 (30–37) versus 29 (24–33), $p=0.0001$). Their responses to CAT items 1–5 (physical symptoms) did not differ, whereas CAT item responses 6 (“confidence” 4.3 ± 1.2 versus 3.3 ± 1.9 , $p=0.026$), 7 (“sleep” 3.9 ± 1.6 versus 2.9 ± 1.6 , $p=0.015$) and 8 (“energy” 3.9 ± 1.6 versus 2.9 ± 1.6 , $p=0.005$) were higher. There were no significant differences in clinical outcomes based on aetiology “D”.

Blood eosinophils $>2\%$ (aetiology “E”) was present in 41 out of 146 (28%). Pre-hospital oral corticosteroid had been prescribed in 9.8% of those $>2\%$ and 30.5% with $\leq 2\%$ eosinophils. Inhaled corticosteroids prescription was similar (75% versus 85%, $p=0.34$). Infection was less common in AECOPD with eosinophils $>2\%$ (41.4% versus 80.9%, $p<0.0001$). “Eosinophilic exacerbations” were associated with lower blood pH (7.32 ± 0.06 versus 7.36 ± 0.09 , $p=0.04$), higher venous carbon dioxide tension (P_{vCO_2}) (53.7 ± 10.5 versus 48.8 ± 12.8 , $p=0.04$) and NIV usage (34.1% versus 18.1%). Despite this, patients with eosinophils $>2\%$ had a shorter hospital stay (4 (3–5) versus 6 (4–9) days, $p<0.001$). Systemic corticosteroid prescription during hospitalisation was similar in the $> \leq 2\%$ eosinophil groups (97.6% versus 97.1%).

An elevated cardiac biomarker (either/both, aetiology “F”) was noted in 85 out of 119 patients (71.2%), NT-proBNP in 83 out of 119 (69.7%) and hs-TnI in 32 out of 119 patients (26.9%). Patients with established diagnoses of cardiovascular disease tended to have higher levels (supplementary table S4), with NT-proBNP significantly higher in those with a past history of cardiac failure ($618 \text{ ng} \cdot \text{L}^{-1}$ (18.5–2016) versus $321 \text{ ng} \cdot \text{L}^{-1}$ (117–693), $p=0.03$). Among patients with an elevated cardiac biomarker, cardiac medication use was notably low: antiplatelets (34.1%), anticoagulants (16.5%), β -blockers (17.7%), angiotensin-converting enzyme (ACE)-I/angiotensin receptor blocker (ARB) (38.8%), statins (32.9%) and loop diuretics (21.1%). Aetiology “F” was not associated with significant differences in short-term clinical outcomes, survival at 12 months or readmission rates. Using a threshold considered more definitive for cardiac failure (NT-proBNP $>900 \text{ ng} \cdot \text{L}^{-1}$) was associated with longer hospital stay (7 (5–10) versus 5 (4–7) days, $p=0.018$).

General environmental factors contributing to hospitalisation (aetiology “G”) were rarely identified (3 out of 146 patients, 2.1%). Factors included running out of medication and failure of home air conditioning during an extreme heatwave.

No aetiology was identified in 6 out of 146 cases (aetiology “X”, 4.1%).

AECOPDs with versus without evidence of infection

Finally, we compared AECOPDs associated with infection (69.9%) versus no infection (30.1%). No differences in demographics, comorbidities or clinical outcomes were found (tables 2 and 3). Total CAT scores were similar (30 (26–33) versus 30 (25–34), $p=0.98$) with only CAT item 2 (“phlegm”) differing in

TABLE 2 Characteristics of patients with and without evidence of infection

	Infection	No infection	p-value
Patients	102 (69.9)	44 (30.1)	
Age years	72.3±10.3	69.8±10.7	0.26
Male	65 (63.7)	26 (59.1)	0.6
Frequent exacerbator, hospital	30 (29.4)	12 (27.3)	0.79
Current smoker	32 (31.4)	15 (34.1)	0.75
Smoking history pack-years	46.7±28.5	38.7±21.6	0.1
BMI kg·m ⁻²	25.1±5.8	25.1±5.3	0.97
FEV ₁ L	1.21±0.49	1.10±0.67	0.42
FEV ₁ % pred	51.2±18.0	44.0±20.1	0.12
T _{LCO} % pred	37.3±14.8	42.7±19.7	0.1
mMRCd score	4 (3–5)	4 (3–5)	0.81
Days since symptom onset	5 (3–7)	4 (2–14)	0.94
Prior contact with HCP	68 (66.7)	24 (54.5)	0.17
Pre-hospital antibiotics	51 (50)	16 (36.4)	0.13
Pre-hospital OCS	30 (29.4)	6 (13.6)	0.042
CAT total score	30 (25–34)	30 (26–33)	0.98
HADS total score	16 (10–22)	18.5 (9–24)	0.53
BAP-65 class	3 (2–5)	2 (2–3)	0.13
CXR infiltrate	30.4	20.9	0.24
Fever ≥38°C	23.5	0	<0.001
WCC ×10 ⁹ per L	12.2±4.8	10.0±3.0	0.006
Neutrophils ×10 ⁹ per L	9.5±4.3	7.0±2.4	<0.001
Eosinophils ×10 ⁹ per L	0.04 (0.0–0.14)	0.25 (0.08–0.46)	<0.001
CRP mg·dL ⁻¹	53 (18.7–117)	4 (1.7–7.0)	<0.001
pH	7.36±0.08	7.33±0.08	0.04
P _{vCO₂} mmHg	48.1±11.2	54.5±13.8	0.006
Bicarbonate mmol·L ⁻¹	27.5±4.2	29.3±5.7	0.13
Base excess mmol·L ⁻¹	2.7±3.8	4.1±5.2	0.11
NT-proBNP ng·L ⁻¹	395 (164–1221)	263 (152–853)	0.45
hs-TnI ng·L ⁻¹	9 (5–32)	8 (5–20)	0.38

Data are presented as n (%), mean±SD or median (interquartile range), unless otherwise stated. BMI: body mass index; FEV₁: forced expiratory volume in 1 s; T_{LCO}: transfer factor of the lung for carbon monoxide; mMRCd: modified Medical Research Council dyspnoea scale; HCP: healthcare provider; OCS: oral corticosteroid; CAT: COPD Assessment Test; HADS: Hospital Anxiety and Depression Scale; BAP-65: blood urea nitrogen ≥25 mg·dL⁻¹, altered mental status, pulse 109 beats per min, age 65 years; CXR: chest radiography; WCC: white cell count; CRP: C-reactive protein; P_{vCO₂}: venous carbon dioxide tension; NT-proBNP: N-terminal pro-brain natriuretic peptide; hs-TnI: high-sensitivity troponin I.

infective exacerbations (4 (2–5) versus 3 (1–3), p=0.01). Severe anxiety/depression symptoms (23.7% versus 24.5%, p=0.92), hs-TnI (9 (5–32) versus 8 (5–20), p=0.37) and NT-proBNP (395 (164–1221) versus 263 (152–853), p=0.45) did not differ. Non-infective exacerbations featured higher

TABLE 3 Management and clinical outcomes of patients with and without evidence of infection

	Infective	Non-infective	p-value
Antibiotics, inpatient	102 (100)	40 (90.9)	0.002
Systemic CS, inpatient	100 (98.0)	42 (95.5)	0.38
NIV	8 (7.8)	10 (22.7)	0.01
HDU/ICU	27 (26.4)	18 (40.1)	0.08
Mechanical ventilation	4 (3.9)	1 (2.5)	0.62
Length of stay days	5 (4–8)	5 (3–8)	0.2
Mortality at 6 months	10 (9.8)	5 (11.4)	0.89
Mortality at 12 months	14 (13.7)	8 (18.2)	0.49
Readmitted within 12 months	40 (39.2)	22 (50.0)	0.39
Time to readmission days	44.5 (18–195)	78 (34–246)	0.39

Data are presented as n (%) or median (interquartile range), unless otherwise stated. CS: corticosteroid; NIV: noninvasive ventilation; HDU: high-dependency unit; ICU: intensive care unit.

blood eosinophil counts (0.25 per μL (0.08–0.46) *versus* 0.04 per μL (0.0–0.14), $p<0.001$). This observation persisted after excluding patients who had received pre-hospital oral corticosteroids (0.28 per μL (0.11–0.46) *versus* 0.05 per μL (0.0–0.2), $p<0.001$).

Repeat evaluation at stable outpatient review

Outpatient review was attended by 68 out of 146 patients (46.6%) at a median of 63 (59–98) days. Those who did *versus* did not attend follow-up showed no differences in demographics or spirometry with the only difference in comorbidities being less diagnosed anxiety disorder (14.9% *versus* 29.9%, $p=0.03$, supplementary table S5). At outpatient review, there was no difference in CRP (3.7 (1.3–8) *versus* 2.9 (1.4–5.5), $p=0.69$), WCC (9.2 \pm 2. *versus* 9.4 \pm 2.5, $p=0.74$) or neutrophils (6.4 \pm 2.7 *versus* 6.3 \pm 2.2, $p=0.89$) between those who had experienced infective *versus* non-infective exacerbations, including reanalysis based on individual infective exacerbation aetiologies (A, B or C).

In contrast, HADS scores at exacerbation and recovery were correlated ($r=0.56$, $p<0.0001$). Patients assigned aetiology “D” at exacerbation had significantly higher HADS scores at follow-up (22 (13–28) *versus* 9 (4–15), $p=0.004$).

Blood eosinophils at exacerbation correlated with eosinophil counts at recovery ($r=0.54$, $p<0.0001$). Patients with eosinophils $>2\%$ at exacerbation (aetiology “E”) had significantly higher blood eosinophils at recovery (0.3 (0.2–0.6) *versus* 0.11 (0.02–0.28), $p=0.0003$).

Correlations between exacerbation and recovery measurements were significant for NT-proBNP ($r=0.39$, $p=0.004$) but not for hs-TnI ($r=0.23$, $p=0.14$). Patients who were aetiology “F” were far more likely to have an elevated cardiac biomarker at recovery (70.6% *versus* 5.9%, $p<0.0001$) with both hs-TnI (5 (4–9) *versus* 3.5 (1.5–5), $p=0.01$) and NT-proBNP (269 (151–692) *versus* 67 (25–108), $p<0.0001$) higher at follow-up.

Discussion

The current study demonstrates that hospitalised AECOPDs comprise a remarkably heterogeneous group of events, often featuring multiple distinct aetiological contributors. This heterogeneity is a barrier to progress in the field, since interventions targeting a specific aetiology or pathology may not show benefit if applied to an unselected group. Focussing attention on exacerbation aetiology and constructing AECOPD phenotypes is a logical approach and may be the most suitable prospective strategy to identify patients eligible for targeted interventions.

AECOPD phenotyping will only gain traction if it can ultimately lead to individualisation of treatment decisions. Aetiologies that are prevalent and responsive to treatment are therefore the most important to target. We based our phenotyping strategy on examining six key putative aetiological factors (virus infection, bacterial infection, depression/anxiety, eosinophil-associated inflammation, cardiac dysfunction, environmental factors). This strategy identified many combinations (26 distinct phenotypes within a cohort of 146 patients) with only around a quarter of AECOPDs associated with a single aetiology. Clearly each AECOPD event may have multiple aetiological “ingredients”, each with distinct implications for individualised management and prognosis. The current study provides proof-of-concept evidence for a practical phenotyping strategy and demonstrates that using a relatively small number of commonly available investigations makes it possible to unravel some of the complexity of AECOPD.

Identifying viral infection appears to have prognostic implications, and multiplex virus PCR will likely become standard of care for hospitalised AECOPD due to the severe acute respiratory syndrome coronavirus 2 (SARS-CoV-2) pandemic. Our virus detection rate (30%) was consistent with previous research [15–17]. Despite more prolonged hospitalisation, a history of frequent severe exacerbations was less common and 12-month survival was better in the viral group. It may be that virus infections are sporadic events, whereas AECOPD linked to bacterial infection or high blood eosinophil exacerbations reflect a more “committed” phenotype [6].

Given the limitations of sputum culture and frequent pre-hospital antibiotic use (45.2% overall in our cohort) we assigned bacterial aetiology to exacerbations where infection was evident, but virus PCR testing was negative. A more precise methodology is difficult within the limitations of routine clinical investigations. Broad-range 16S rDNA PCR of sputum samples would enhance the sensitivity for detection of bacteria on sputum but is not routinely available, and its clinical interpretation remains uncertain. We chose a sensitive CRP threshold of $>20\text{ mg}\cdot\text{dL}^{-1}$ previously suggested as optimal threshold to identify bacteria in sputum at AECOPD [11]. Putative bacterial exacerbations were associated with frequent hospitalisation, comorbid cardiac disease and reduced survival at 1 year. The frequent identification of *Pseudomonas aeruginosa* on

sputum culture (supplementary table S2) may reflect advanced structural lung disease and a propensity to recurrent bacterial infection with airway colonisation. Reduced survival has previously been associated with lung dysbiosis identified on sputum culture at the time of hospitalised exacerbation [18].

Secondary bacterial infection is known to be a frequent sequel of virus infection in AECOPD [19], and our low prevalence of confirmed co-infection is likely an underestimate reflecting prior antibiotic use, limitations of sputum culture and phenotyping based on admission samples only. In keeping with previous studies we found the highest inflammatory markers during co-infections [20].

The impact of non-infective aetiologies on AECOPD has been less extensively studied. Anxiety and depression have been associated with increased hospitalisation rates, longer hospitalisation and increased mortality in COPD [21, 22]. In our study severe symptoms of anxiety and depression were common and often untreated. Importantly, HADS scores at AECOPD and recovery were strongly correlated. Future studies could explore the role for identification of psychological morbidity and initiation of appropriate interventions prior to hospital discharge.

Blood eosinophils appear to identify an important AECOPD phenotype. Infection was less common with higher eosinophils. While patients with eosinophilic exacerbations had lower blood pH, higher P_{vCO_2} and greater need for NIV, they had a shorter hospital length of stay, a finding that may reflect corticosteroid responsiveness [23]. Eosinophil counts were still higher after recovery suggesting association between the exacerbation and “stable” phenotype. Given the key benefit of anti-interleukin (IL)-5 therapies is reduction of exacerbations, patients hospitalised with an eosinophilic exacerbation may be the ideal candidates for future trials of anti-IL-5 therapies in COPD.

Finally, we observed biochemical evidence of acute cardiac dysfunction in a majority of AECOPDs [24–27]. The higher levels observed in patients with established cardiovascular disease suggests cardiac biomarkers reflect underlying cardiovascular health. At the same time, cardiac biomarkers were often high even amongst those without an established diagnosis of cardiovascular disease. This suggests that cardiac disease may be a crucial underdiagnosed “treatable trait” [28] which can be fortuitously detected during AECOPD. Delineation of the multitude of cardiac pathologies identifiable in a hospitalised AECOPD population was beyond the scope of this paper. While the relationship between an elevated cardiac biomarker at exacerbation and the likelihood of an identifiable treatable cardiac comorbidity requires further study, the low prescription rates of cardiac therapies observed in our cohort suggests a potential need for increased recognition and treatment of cardiovascular pathology in COPD.

Our study has a number of limitations. Our sample size was not adequate to examine associations between clusters of aetiologies (phenotypes) and pertinent outcomes. This will likely require very large-scale multicentre studies of exacerbation characteristics, which have been identified as a priority for future AECOPD research [29, 30]. The very low inpatient mortality (1 out of 146, 0.7%) may reflect exclusion of patients mechanically ventilated at the time of admission and the requirement for adequate cognition to complete questionnaires. We employed routine clinical investigations to define phenotypes, which limits the precision and reliability of diagnosing bacterial infection. However, this strategy was intentionally applicable to “real-life” practice. Virus and bacterial detection at AECOPD may potentially be “false positives” reflecting colonisation, and even virus PCR may give “false negatives” [11]. Pre-hospital antibiotic (45.2%) and/or oral corticosteroid (23.2%) use were common and may have influenced phenotypes. We phenotyped AECOPDs only once at hospital admission, but “evolution” of AECOPD phenotypes over the course of an exacerbation is an area for future study. Finally, other important AECOPD aetiologies may not have been captured in our methodology. While our strategy focussed on treatable aetiological components of the acute hospitalisation episode, phenotyping the chronic disease state (*e.g.* emphysema predominant) is also key to individualisation of care. Understanding relationships between the chronic disease phenotype and the acute exacerbation phenotype is an area for future research.

In conclusion, better prevention and management of AECOPD will be challenging since there are numerous causes, often in combination, that converge as complex, multi-faceted phenotypes. Identifying the individual contributory aetiologies is feasible and relates to important clinical outcomes. Large prospective studies employing phenotyping can enhance understanding of disease mechanisms and ultimately drive “personalised medicine” in AECOPD.

Author contributions: Conception and design: M.I. MacDonald, P.T. King and P.G. Bardin; data acquisition: M.I. MacDonald, C.R. Osadnik, L. Bulfin and E. Leahy; statistical analysis and interpretation: M.I. MacDonald,

C.R. Osadnik, P. Leong, K. Hamza, P.T. King and P.G. Bardin; drafting the manuscript for important intellectual content: M.I. MacDonald, C.R. Osadnik, P. Leong, E. Shafuddin, P.T. King and P.G. Bardin; final review of manuscript: all authors.

Conflict of interest: M.I. MacDonald reports financial support for this study from GlaxoSmithKline: payments made to support this project *via* an unrestricted educational grant. GlaxoSmithKline had no involvement in study design, patient recruitment, data analysis or manuscript preparation. No further disclosures provided. C.R. Osadnik has nothing to disclose. L. Bulfin reports financial support for this study from GlaxoSmithKline: payments made to support this project *via* an unrestricted educational grant. GlaxoSmithKline had no involvement in study design, patient recruitment, data analysis or manuscript preparation. No further disclosures provided. E. Leahy reports financial support for this study from GlaxoSmithKline: payments made to support this project *via* an unrestricted educational grant. GlaxoSmithKline had no involvement in study design, patient recruitment, data analysis or manuscript preparation. No further disclosures provided. P. Leong reports financial support for this study from GlaxoSmithKline: payments made to support this project *via* an unrestricted educational grant. GlaxoSmithKline had no involvement in study design, patient recruitment, data analysis or manuscript preparation. No further disclosures provided. E. Shafuddin reports financial support for this study from GlaxoSmithKline: payments made to support this project *via* an unrestricted educational grant. GlaxoSmithKline had no involvement in study design, patient recruitment, data analysis or manuscript preparation. No further disclosures provided. K. Hamza has nothing to disclose. P.T. King reports financial support for this study from GlaxoSmithKline: payments made to support this project *via* an unrestricted educational grant. GlaxoSmithKline had no involvement in study design, patient recruitment, data analysis or manuscript preparation. No further disclosures provided. P.G. Bardin reports financial support for this study from GlaxoSmithKline: payments made to support this project *via* an unrestricted educational grant. GlaxoSmithKline had no involvement in study design, patient recruitment, data analysis or manuscript preparation. No further disclosures provided.

Support statement: Funding support for this study was provided by an unrestricted educational grant from GlaxoSmithKline. The funder did not play any role in study design, data collection, analysis and interpretation of data or the decision to submit the paper for publication. Funding information for this article has been deposited with the Crossref Funder Registry.

References

- 1 Han MK, Agusti A, Calverley PM, *et al.* Chronic obstructive pulmonary disease phenotypes: the future of COPD. *Am J Respir Crit Care Med* 2010; 182: 598–604.
- 2 Vogelmeier CF, Criner GJ, Martinez FJ, *et al.* Global strategy for the diagnosis, management, and prevention of chronic obstructive lung disease 2017 report. GOLD executive summary. *Am J Respir Crit Care Med* 2017; 195: 557–582.
- 3 MacDonald M, Beasley RW, Irving L, *et al.* A hypothesis to phenotype COPD exacerbations by aetiology. *Respirology* 2011; 16: 264–268.
- 4 MacDonald M, Korman T, King P, *et al.* Exacerbation phenotyping in chronic obstructive pulmonary disease. *Respirology* 2013; 18: 1280–1281.
- 5 Bafadhel M, McKenna S, Terry S, *et al.* Acute exacerbations of chronic obstructive pulmonary disease: identification of biologic clusters and their biomarkers. *Am J Respir Crit Care Med* 2011; 184: 662–671.
- 6 Mayhew D, Devos N, Lambert C, *et al.* Longitudinal profiling of the lung microbiome in the AERIS study demonstrates repeatability of bacterial and eosinophilic COPD exacerbations. *Thorax* 2018; 73: 422–430.
- 7 Jones PW. COPD assessment test: rationale, development, validation and performance. *COPD* 2013; 10: 269–271.
- 8 Zigmond AS, Snaith RP. The hospital anxiety and depression scale. *Acta Psychiatr Scand* 1983; 67: 361–370.
- 9 Hsu KY, Lin JR, Lin MS, *et al.* The modified Medical Research Council dyspnoea scale is a good indicator of health-related quality of life in patients with chronic obstructive pulmonary disease. *Singapore Med J* 2013; 54: 321–327.
- 10 Peng C, Tian C, Zhang Y, *et al.* C-reactive protein levels predict bacterial exacerbation in patients with chronic obstructive pulmonary disease. *Am J Med Sci* 2013; 345: 190–194.
- 11 Singer S, Kuhnt S, Gotze H, *et al.* Hospital anxiety and depression scale cutoff scores for cancer patients in acute care. *Br J Cancer* 2009; 100: 908–912.
- 12 Chang Robinson, SC, Mills GD, *et al.* Biochemical markers of cardiac dysfunction predict mortality in acute exacerbations of COPD. *Thorax* 2011; 66: 764–768.
- 13 Galasko GI, Lahiri A, Barnes SC, *et al.* What is the normal range for N-terminal pro-brain natriuretic peptide? How well does this normal range screen for cardiovascular disease? *Eur Heart J* 2005; 26: 2269–2276.
- 14 Trambas C, Pickering JW, Than M, *et al.* Impact of high-sensitivity troponin i testing with sex-specific cutoffs on the diagnosis of acute myocardial infarction. *Clin Chem* 2016; 62: 831–838.
- 15 Sapey E, Stockley RA. COPD exacerbations. 2: aetiology. *Thorax* 2006; 61: 250–258.

- 16 Hewitt R, Farne H, Ritchie A, *et al.* The role of viral infections in exacerbations of chronic obstructive pulmonary disease and asthma. *Ther Adv Respir Dis* 2016; 10: 158–174.
- 17 Zwaans WA, Mallia P, van Winden ME, *et al.* The relevance of respiratory viral infections in the exacerbations of chronic obstructive pulmonary disease: a systematic review. *J Clin Virol* 2014; 61: 181–188.
- 18 Filho FSL, Alotaibi NM, Ngan D, *et al.* Sputum microbiome is associated with 1-year mortality after chronic obstructive pulmonary disease hospitalizations. *Am J Respir Crit Care Med* 2019; 199: 1205–1213.
- 19 Mallia P, Footitt J, Sotero R, *et al.* Rhinovirus infection induces degradation of antimicrobial peptides and secondary bacterial infection in chronic obstructive pulmonary disease. *Am J Respir Crit Care Med* 2012; 186: 1117–1124.
- 20 Wilkinson TM, Hurst JR, Perera WR, *et al.* Effect of interactions between lower airway bacterial and rhinoviral infection in exacerbations of COPD. *Chest* 2006; 129: 317–324.
- 21 Laurin C, Moullec G, Bacon SL, *et al.* Impact of anxiety and depression on chronic obstructive pulmonary disease exacerbation risk. *Am J Respir Crit Care Med* 2012; 185: 918–923.
- 22 Eisner MD, Blanc PD, Yelin EH, *et al.* Influence of anxiety on health outcomes in COPD. *Thorax* 2010; 65: 229–234.
- 23 MacDonald MI, Osadnik CR, Bulfin L, *et al.* Low and high blood Eosinophil counts as biomarkers in hospitalized acute exacerbations of COPD. *Chest* 2019; 156: 92–100.
- 24 Aliyali M, Mehravaran H, Abedi S, *et al.* Impact of comorbid ischemic heart disease on short-term outcomes of patients hospitalized for acute exacerbations of COPD. *Tanaffos* 2015; 14: 165–171.
- 25 Almagro P, Cabrera FJ, Diez J, *et al.* Comorbidities and short-term prognosis in patients hospitalized for acute exacerbation of COPD: the EPOC en Servicios de Medicina Interna (ESMI) study. *Chest* 2012; 142: 1126–1133.
- 26 Antonelli Incalzi R, Fuso L, De Rosa M, *et al.* Co-morbidity contributes to predict mortality of patients with chronic obstructive pulmonary disease. *Eur Respir J* 1997; 10: 2794–2800.
- 27 Marcun R, Sustic A, Brguljan PM, *et al.* Cardiac biomarkers predict outcome after hospitalisation for an acute exacerbation of chronic obstructive pulmonary disease. *Int J Cardiol* 2012; 161: 156–159.
- 28 Agusti A, Bel E, Thomas M, *et al.* Treatable traits: toward precision medicine of chronic airway diseases. *Eur Respir J* 2016; 47: 410–419.
- 29 Mathioudakis AG, Sivapalan P, Papi A, *et al.* The DisEntangling Chronic Obstructive pulmonary Disease Exacerbations clinical trials NETwork (DECODE-NET): rationale and vision. *Eur Respir J* 2020; 56: 2000627.
- 30 Janssens W, Bafadhel M. The CICERO (Collaboration In COPD Exacerbations) Clinical Research Collaboration. *Eur Respir J* 2020; 55: 2000079.