


RESEARCH ARTICLE

Open Access

A longitudinal SARS-CoV-2 biorepository for COVID-19 survivors with and without post-acute sequelae



Stephanie M. LaVergne¹, Sophia Stromberg², Bridget A. Baxter¹, Tracy L. Webb³, Taru S. Dutt⁴, Kailey Berry⁵, Madison Tipton⁵, Jared Haberman⁵, Benjamin R. Massey⁶, Kim McFann⁷, Omar Alnachoukati⁷, Linda Zier⁷, Thomas Heacock⁷, Gregory D. Ebel⁴, Marcela Henao-Tamayo⁴, Julie Dunn⁷ and Elizabeth P. Ryan^{1*} 

Abstract

Background: SARS-CoV-2 has swept across the globe, causing millions of deaths worldwide. Though most survive, many experience symptoms of COVID-19 for months after acute infection. Successful prevention and treatment of acute COVID-19 infection and its associated sequelae is dependent on in-depth knowledge of viral pathology across the spectrum of patient phenotypes and physiologic responses. Longitudinal biobanking provides a valuable resource of clinically integrated, easily accessed, and quality-controlled samples for researchers to study differential multi-organ system responses to SARS-CoV-2 infection, post-acute sequelae of COVID-19 (PASC), and vaccination.

Methods: Adults with a history of a positive SARS-CoV-2 nasopharyngeal PCR are actively recruited from the community or hospital settings to enroll in the Northern Colorado SARS-CoV-2 Biorepository (NoCo-COBIO). Blood, saliva, stool, nasopharyngeal specimens, and extensive clinical and demographic data are collected at 4 time points over 6 months. Patients are assessed for PASC during longitudinal follow-up by physician led symptom questionnaires and physical exams. This clinical trial registration is [NCT04603677](https://clinicaltrials.gov/ct2/show/study/NCT04603677).

Results: We have enrolled and collected samples from 119 adults since July 2020, with 66% follow-up rate. Forty-nine percent of participants assessed with a symptom surveillance questionnaire ($N = 37$ of 75) had PASC at any time during follow-up (up to 8 months post infection). Ninety-three percent of hospitalized participants developed PASC, while 23% of those not requiring hospitalization developed PASC. At 90–174 days post SARS-CoV-2 diagnosis, 67% of all participants had persistent symptoms ($N = 37$ of 55), and 85% percent of participants who required hospitalization during initial infection ($N = 20$) still had symptoms. The most common symptoms reported after 15 days of infection were fatigue, loss of smell, loss of taste, exercise intolerance, and cognitive dysfunction.

* Correspondence: E.P.Ryan@colostate.edu

¹Department of Environmental and Radiological Health Sciences, Colorado State University, 1601 Campus Delivery, Fort Collins, CO 80523, USA
Full list of author information is available at the end of the article



© The Author(s). 2021 **Open Access** This article is licensed under a Creative Commons Attribution 4.0 International License, which permits use, sharing, adaptation, distribution and reproduction in any medium or format, as long as you give appropriate credit to the original author(s) and the source, provide a link to the Creative Commons licence, and indicate if changes were made. The images or other third party material in this article are included in the article's Creative Commons licence, unless indicated otherwise in a credit line to the material. If material is not included in the article's Creative Commons licence and your intended use is not permitted by statutory regulation or exceeds the permitted use, you will need to obtain permission directly from the copyright holder. To view a copy of this licence, visit <http://creativecommons.org/licenses/by/4.0/>. The Creative Commons Public Domain Dedication waiver (<http://creativecommons.org/publicdomain/zero/1.0/>) applies to the data made available in this article, unless otherwise stated in a credit line to the data.

Conclusions: Patients who were hospitalized for COVID-19 were significantly more likely to have PASC than those not requiring hospitalization, however 23% of patients who were not hospitalized also developed PASC. This patient-matched, multi-matrix, longitudinal biorepository from COVID-19 survivors with and without PASC will allow for current and future research to better understand the pathophysiology of disease and to identify targeted interventions to reduce risk for PASC. Registered 27 October 2020 - Retrospectively registered, <https://clinicaltrials.gov/ct2/show/NCT04603677>.

Keywords: SARS-CoV-2, COVID-19, Post-acute sequelae of COVID-19 (PASC), Long-hauler, Biobank, Biorepository, Coronavirus

Background

Since its initial identification in December 2019, severe acute respiratory syndrome-coronavirus-2 (SARS-CoV-2) has caused a global pandemic, killing millions and infecting over 100 million individuals worldwide [1, 2]. SARS-CoV-2 leaves behind millions of survivors, most of whom recover, but for many, symptoms persist [3–7]. A broad range of symptoms can last over 6 months, and can include persistence of initial acute symptoms or development of new symptoms [3, 8, 9]. Persistent or new symptoms affecting COVID-19 survivors are named post-acute sequelae of COVID-19 (PASC) [9, 10]. Risk factors for developing PASC are currently being defined globally. A systematic and calculated approach to investigating the course of SARS-CoV-2 infection is needed to understand varied susceptibility to severe SARS-CoV-2 disease and COVID-19 sequelae. Scientists and industry have expressed the importance of a biorepository as an essential building block for critical research [11–17]. Biobanking efforts for SARS-CoV-2 are underway globally, yet most are comprised of limited specimen types collected from participants at a single time point [16, 18–21]. The Northern Colorado SARS-CoV-2 Biorepository (NoCo-COBIO) is uniquely multifaceted and contains longitudinal clinical data, electronic medical records (EMR), demographics, quality of life surveys, and biological specimens of stool, saliva, nasopharyngeal swab specimens, plasma, serum, peripheral blood mononuclear cells (PBMCs), and breastmilk if available, from each SARS-CoV-2-infected participant. The biospecimens are immensely valuable to longitudinally evaluate mechanisms underlying persistent symptoms and PASC. This clinically integrated-biorepository and COVID-19 survivorship project has been successful in securing patient compliance to long-term follow-up visits with the study team, and is a powerful resource for global collaboration and co-creation of statistically-powered study designs for assessing molecular, immune, and metabolic signatures associated with PASC in adults [22].

Methods

Participant identification and enrollment

The identification and enrollment of participants into NoCo-COBIO is a joint effort between Colorado State

University (CSU), a land grant institution with a coordinated state-wide extension system, and the University of Colorado Health System (UCH). Individuals are eligible for participation if they have had a positive SARS-CoV-2 polymerase chain reaction (PCR) test and are at least 18 years of age. Participants are recruited from the community via the health department screening, local medical clinics, emails, recruitment flyers, web-based announcements, and directly through UCH northern Colorado hospitals, including Poudre Valley Hospital (PVH) in Fort Collins, Medical Center of the Rockies (MCR) in Loveland, and Greeley Hospital in Greeley. The UCH Trauma Research Department (TRD) identifies eligible hospitalized patients through Epic, the EMR platform. UCH clinicians that oversee patients at the northern Colorado hospitals are aware of the biorepository and may refer potential participants to the biobank research team for follow-up. UCH staff directly approach eligible, hospitalized patients on the ward for consent and enrollment. The UCH investigators also conduct frequent EMR searches to recruit recently discharged/diagnosed COVID-19 patients. Additionally, enrolled participants have also assisted via word-of-mouth and personal networks.

This biorepository was approved by CSU's Research Integrity and Compliance Review Office Institutional Review Board (IRB; protocol ID 20-10063H), as well as UCH IRB (Colorado Multiple IRB 20–6043) and is registered with [ClinicalTrials.gov](https://clinicaltrials.gov) (NCT04603677). All enrolled participants provide written informed consent. Adults with no history of infection and with a negative SARS-CoV-2 PCR test are enrolled for the same study visit and specimen collections. Given that these individuals are not matched to infected individuals, they were not included in the comparative analysis. All participants receive \$25 cash compensation at each of the four study visits.

Clinical data

All data is de-identified and password-protected for analysis. Clinical data obtained from the EMR are stored in Research Electronic Data Capture (REDCap), and each record is assigned a unique identifier. Demographic data

that may affect COVID-19 outcomes [23–26], such as socioeconomic status, employment status, ethnicity, race, and clinical data are obtained from participants at their clinic visits. A physician performs a physical exam at each outpatient visit. Participants are categorized as having a mild, moderate, or severe initial infection based on oxygen requirements during their acute illness (no oxygen requirement, 1–5 L oxygen requirement, and greater than 5 L oxygen use, respectively). During follow-up visits, participants assessed with a survey of 70 symptoms to identify new or persistent sequelae of COVID-19 (Table 1). Patients are defined as having PASC if they experience at least one of the following symptoms commonly associated with PASC: fatigue, dyspnea, joint pain, chest pain, or cognitive impairment, at any follow-up visit [27]. Fatigue was not described nor defined for the participants during administration of the post-acute symptom/sequelae questionnaire and was subject to each participant's interpretation. However, if the participant described excessive tiredness or difficulties with physical activity that was worse than their baseline state of health prior to COVID-19 infection, then the participant was marked as having fatigue. Dyspnea was defined for participants as difficulty breathing or shortness of breath.

The study team administers the Rand SF-36 item health survey (SF-36) at two clinical follow-up visits to assess social impacts and quality of life after COVID-19. This survey gives an average maximum score of 100 in 8 different categories: general health, physical functioning, role limitations due to physical health, role limitations due to emotional health, energy level, emotional well-being, social functioning, and pain. A total, combined

score is also given, with a maximum of 3600. The survey asks questions about the participants' emotional and physical well-being during the 4 weeks prior to survey administration. This validated instrument [28, 29] also compares current health to their health 1 year prior, as well as reports on the expectations for future health outcomes.

Biospecimen collection and transport

Participants consent to provide all biospecimens at 4 visits over an enrollment period of 6 months. The approximate time points for each of the study visits with symptom and specimen collections are: at the time of enrollment (Baseline Visit 1), 1 month after baseline (Visit 2), 3 months after baseline (Visit 3), and 6 months after enrollment (Visit 4). The second and third visits may take place in the hospital if the participant remains hospitalized. Follow-up visits take place at designated campus clinical research labs, medical clinic sites or in some specialized cases at home. After 6 months, participants may provide additional consent for a one-year follow-up visit.

Figure 1 depicts the trajectory of each sample collected. Participants provide approximately 50 mL of blood, 10 mL of saliva (5 mL in viral transport media (VTM, sterile hanks balanced salt solution (ThermoFischer Scientific) with 2% FBS) for viral propagation and 5 mL without VTM), a stool sample, and a nasopharyngeal swab specimen at each visit. Blood is collected into five 8 mL sodium citrate cell preparation tubes (CPTs) (BD BioSciences, Franklin Lakes, NJ) and one 5 mL serum separator tube (VWR). Saliva samples are collected by expectoration, or a tracheal aspirate specimen

Table 1 Symptom surveillance across organ systems for study participants during longitudinal evaluations and in accordance with biospecimen collections

System	Symptom
General	Fever, fatigue, exercise intolerance, weakness, appetite loss, hair loss, night sweats
Neurologic	Headache, dizziness, loss of consciousness, deafness or change in hearing, numbness, tingling, or burning sensation in extremities, loss of taste, loss of smell, change in taste, forgetful or absent minded, confused, difficulty concentrating
Ocular	Eye pain, redness, tearing, light sensitivity, floaters, loss of vision, blurry vision, flashes of light, eye burning
Head and Neck	Sore throat, runny nose, congestion, sinusitis, facial pressure, neck pain, mouth sores
Cardiac	Palpitations, chest pain, lower extremity swelling, chest burning, chest pressure, rapid heart rate
Pulmonary	Difficulty breathing, cough, phlegm in the back of throat, wheezing
Gastrointestinal	Abdominal pain, diarrhea, constipation, nausea, vomiting, reflux
Integumentary	Rash, dry skin, itching, jaundice
Musculoskeletal	Muscle aches, body aches, back pain, joint pain
Reproductive	Erectile dysfunction, amenorrhea, change in menstruation
Hematologic	Easy bruising, bleeding, clot
Psychologic	Anxiety, depression, difficulty sleeping
Other	Patients are asked about other persistent or new symptoms not mentioned above

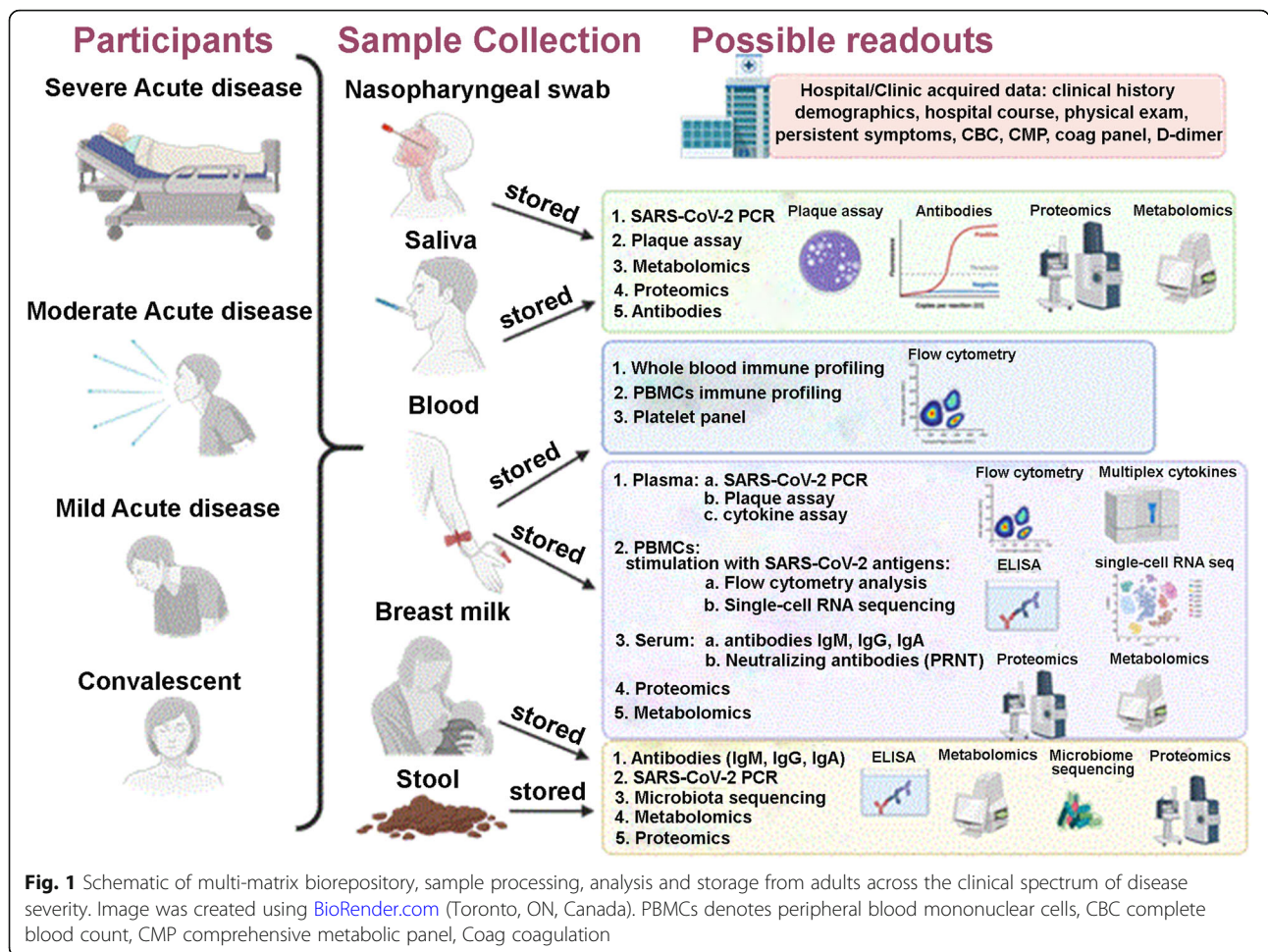


Fig. 1 Schematic of multi-matrix biorepository, sample processing, analysis and storage from adults across the clinical spectrum of disease severity. Image was created using BioRender.com (Toronto, ON, Canada). PBMCs denotes peripheral blood mononuclear cells, CBC complete blood count, CMP comprehensive metabolic panel, Coag coagulation

is collected if participants are intubated. Samples with VTM are kept on ice during transport. Nasopharyngeal swab specimens are collected with a latticed nasal swab (Resolution Medical). The swab is then placed in VTM and kept on ice for transport. Stool is either self-collected by the participants or collected by the participant's nurse if they are hospitalized. The stool can be collected prior to the study visit and stored frozen. Breast milk is collected from lactating participants, either fresh in pre-distributed breast milk storage bags, or previously pumped and stored frozen.

Each patient sample is de-identified and labeled with a unique study code identifier. Information linking participant identification to the study codes is stored in the offices of the investigators and will be maintained for up to 5 years following the cessation of the study. Nasopharyngeal swab and saliva in VTM from acutely infected patients are transported to and processed in CSU's biosafety level-3 (BSL-3) facilities. Blood, nasopharyngeal samples, and saliva collected from convalescent patients and all fecal samples are transported to and processed in biosafety level-2 (BSL-2) facilities in accordance with

CSU's IRB and Centers for Disease Control and Prevention (CDC) recommendations. Transportation of specimens from clinical sites to laboratory facilities is done in accordance with U.S. Department of Transportation hazardous materials regulations.

Whole blood processing protocol

An aliquot of whole blood is removed from a CPT, incubated with platelet surface markers, and analyzed by flow cytometry with LSR II (BD Biosciences) and FACSaria Cell Sorter (BD Biosciences) instruments. A second aliquot of blood is removed from the CPT and stained for leukocytes and endothelial cells and analyzed by flow cytometry on a Cytex Aurora (Cytex Biosciences) instrument. The CSU Flow Cytometry Core has instruments with the same laser configurations inside and outside the BSL-3 facility to preserve consistent results when analyzing samples in different locations.

The CPTs are then centrifuged according to manufacturer instructions. The plasma is removed, and the PBMCs are separated and washed. A small aliquot of PBMCs is removed for additional antibody staining and

flow cytometry analysis. PBMCs are cryostored in freezing media (90% heat inactivated fetal bovine serum (FBS) (Avantor) and 10% dimethyl sulfoxide (DSMO) (Sigma Altrich)). PBMC are first stored in an isopropanol-filled Nalgene® Mr. Frosty (Thermo Scientific) at -80°C for 24 h and transferred into liquid nitrogen for long-term cryopreservation.

Plasma and serum aliquots

Following removal from CPTs, plasma is stored in 1 mL aliquots at -80°C . Blood collected in serum separator tubes is allowed to clot for 30 min, and then spun at $1000 \times g$ at 4°C for 10 min. Serum is removed and stored in 300 μL aliquots at -80°C . Each participant's samples are designated to an individual cryobox and organized by their visit for quick sample retrieval.

Saliva and nasopharyngeal processing

An aliquot of both saliva and nasopharyngeal sample in VTM are sent for quantitative PCR (qPCR) analysis for SARS-CoV-2. The remaining saliva is centrifuged, the pellet is discarded, and the supernatant is aliquoted for -80°C storage. Nasopharyngeal samples are aliquoted and stored at -80°C for SARS-CoV-2 viral titer analysis using plaque assay.

Stool processing

Stool samples are aliquoted and stored at -80°C for DNA, RNA, secretory immunoglobulin A, and metabolite analysis.

Statistical analysis

Statistical analysis was performed using Fischer's Exact Test.

Results

To date, 119 participants have been enrolled (Table 2). Thirty-one participants are classified as having had a severe initial infection (defined as oxygen requirement greater than 5 L/min), 30 experienced a moderate infection (defined as oxygen requirement of 1-5 L/min), and 58 experienced a mild or asymptomatic disease course (no oxygen required).

Sixty-six percent ($N = 79$) of all participants have completed 2 visits, 50% ($N = 59$) have completed 3 visits, and 33% ($N = 39$) have completed 4 visits. Including follow-ups, 301 visits have been conducted, and at 88% of these visits, participants were able to provide all samples requested. Participant visits are conducted at the time of enrollment (Visit 1-Baseline), and at 1 month (Visit 2), 3 months (Visit 3), and 6 months (Visit 4) from the time of enrollment. Nearly every visit or study encounter has yielded blood, nasopharyngeal, and saliva samples (99, 99, and 98% respectively), and 88% of visits yielded stool

Table 2 Characteristics of the study participants at baseline ($N = 119$)

Characteristics	Mild ($n = 58$)	Moderate ($n = 30$)	Severe ($n = 31$)
Age, mean (SD), y	39.2 (15.9)	62.1 (14)	59.7 (13.3)
Sex, no. (%)			
Female	42 (71)	15 (52)	9 (29)
Male	16 (29)	15 (48)	22 (71)
BMI ^a , mean (SD)	26.3 (5.3)	36.5 (7.5)	36.5 (10.7)
Ethnicity, no. (%)			
Non-Hispanic/Latinx	54 (93)	23 (76.6)	18 (58)
Hispanic/Latinx	4 (7)	7 (23.4)	13 (42)
Co-existing conditions, no. (%)			
CVA	0	3 (11)	1 (3.2)
COPD	1 (2)	5 (18.5)	3 (9.7)
DM	1 (2)	8 (26)	16 (48.4)
HTN	1 (2)	11 (40)	19 (57.6)
CAD	1 (2)	2 (7.4)	1 (3.2)
Active cancer	0	3 (11)	0

^aBMI denotes body mass index, CVA cerebrovascular accident, COPD chronic obstructive pulmonary disease, DM diabetes mellites, HTN hypertension, CAD coronary artery disease

samples. The team typically processes 10 sample sets in a single day. The time to obtain, process, and store samples from 10 participants is approximately 50 personnel hours (5–7 people) and costs \$1500 U.S. dollars per sample.

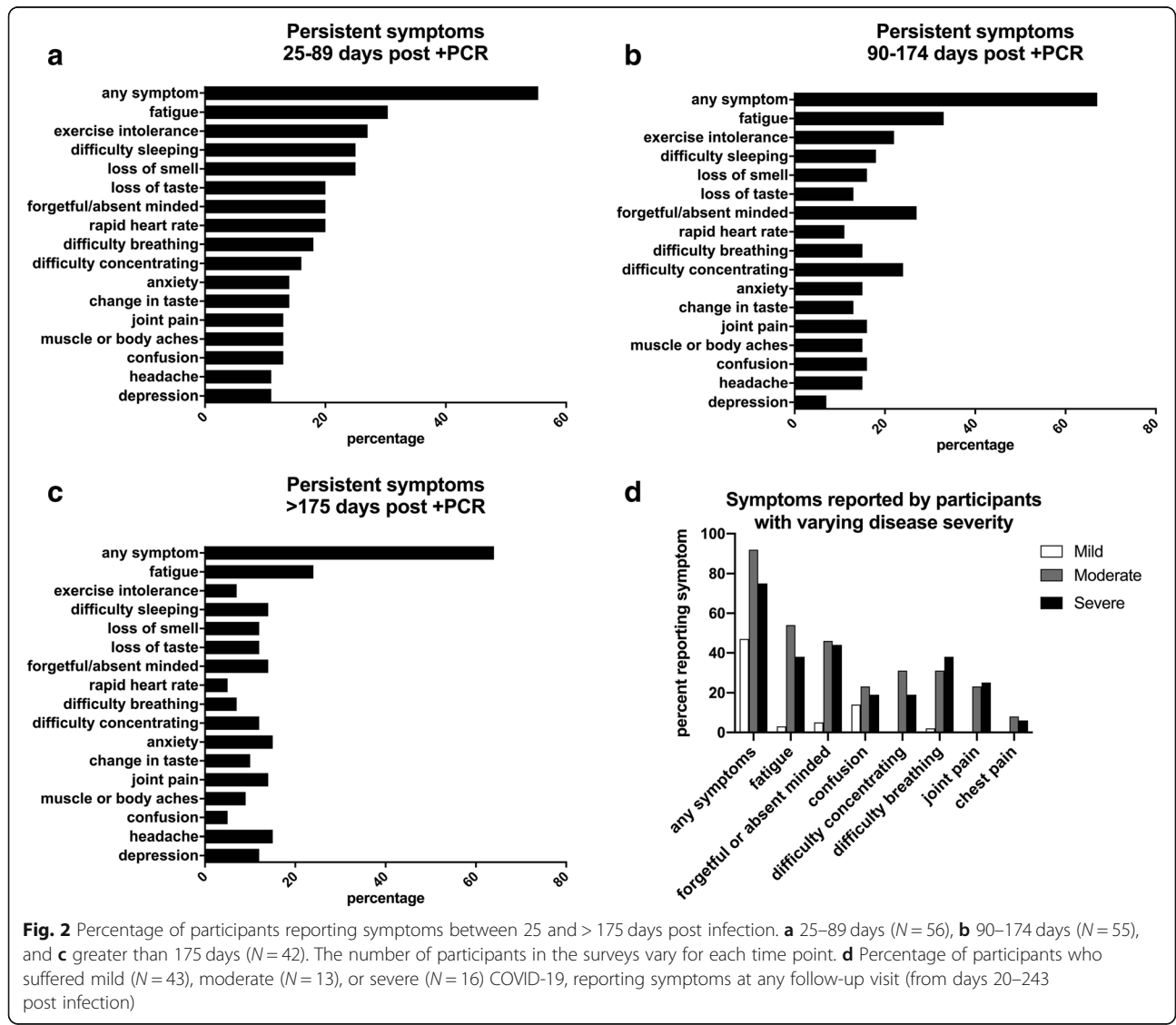
The participants included in the biorepository thus far represent a broad age range (18–82 years), and the elderly were more likely to have moderate or severe COVID-19 (Table 2). Seventy-one percent of participants are females, and 29% are males. Of participants that suffered severe disease, 69% are males. Nineteen participants identify as Hispanic or Latino, and of these, 15 were hospitalized with COVID-19. Obese participants in our cohort were also more likely to suffer from moderate or severe COVID-19. The average body mass index (BMI) of participants with mild disease was 26, in contrast to an average BMI of 36.5 in both the moderate and severe groups (Table 2).

PASC was defined herein as having at least one common persistent symptom, and has been previously described in the literature [3, 6, 27] for including fatigue or tiredness, dyspnea, difficulty breathing, or shortness of breath, chest pain, joint pain, and perceived cognitive impairment such as "brain fog", absent-minded, forgetfulness, difficulty concentrating or confusion) at any follow-up visit. Of the 79 participants who have completed follow-up visits, 75 have completed the persistent symptoms questionnaire. Forty-nine percent of participants who followed up ($N = 37$ of 75) had PASC at any

point during their follow-up visits, with symptom surveillance performed at up to 8 months from infection. Significantly more hospitalized participants (93%, $N = 25$ of 27) developed PASC compared to 23% of those not requiring hospitalization ($N = 11$ of 47) ($p = 0.0001$). Participants who had moderate and severe COVID-19 were equally as likely to develop PASC (92.3 and 92.9%, respectively). At 25–89 days post positive SARS-CoV-2 PCR, 55% of participants who attended clinic ($N = 31$ of 56) had at least one persistent symptom attributed to COVID-19 (Fig. 2a). At 90–174 days post positive SARS-CoV-2 PCR, 67% ($N = 31$ of 49) of participants attending clinic had persistent symptoms (Fig. 2b). Sixty-four percent of all participants (Fig. 2c), and 90% of hospitalized patients still reported symptoms after 175 post initial infection, with the most symptoms reported in this group being fatigue, difficulty concentrating,

absent-minded or forgetful (also described as brain fog), ageusia, and anosmia. Participants with moderate disease reported more symptoms than participants with mild or severe disease, however those with severe disease were more likely to experience difficulty breathing and joint pain (Fig. 2d).

The individuals included in this biorepository also have a variety of underlying health conditions that have been associated with severe COVID-19, including, but not limited to, obesity, stroke, diabetes mellitus, liver disease, connective tissue disease, chronic obstructive pulmonary disease (COPD), congestive heart failure, and coronary artery disease [23, 24, 30–33]. In our cohort, PASC is more prevalent in those with obesity and advanced age. This may be confounded by disease severity, given most participants with severe COVID-19 are obese and elderly, and a larger sample size is needed to correct



for bias. When comparing those with and without PASC in participants with mild disease only, there was no significant difference in age, gender, BMI, or underlying health conditions. Interestingly, nearly all patients with PASC had normal physical exams.

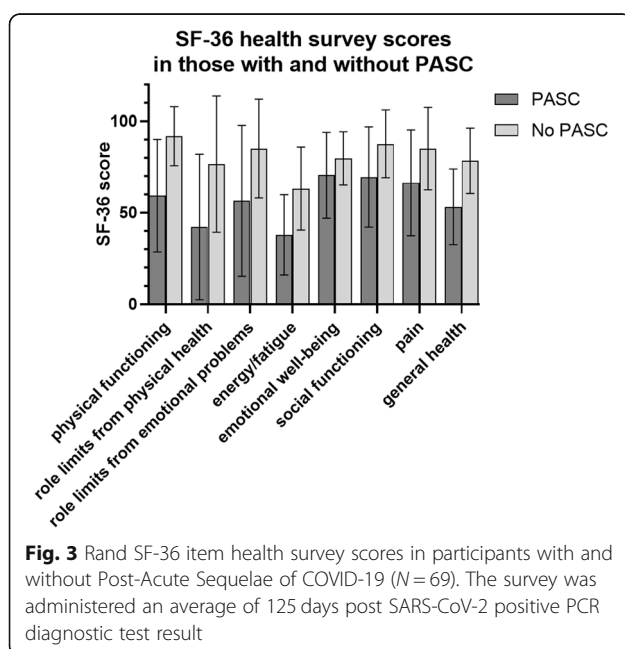
SF-36 surveys were performed in 69 participants: 33 with PASC and 36 without PASC. The survey was performed at any point between day 21 and day 288 after positive SARS-CoV-2 PCR, with a mean of day 125. Participants with PASC had mean total score of 2019 out of a maximum score of 3600, while those without PASC had a higher mean total score of 2934. On average, participants with PASC scored lower in each of the 8 individual categories measured with SF-36 when compared to those without PASC. Questions in each of the 8 categories are averaged to give a maximum score of 100 for each category. The individual score differences between those with PASC and without are as follows: physical functioning (59 vs 92), role of limitations due to physical health (42 vs 77), role of limitations due to emotional problems (57 vs 85), energy and fatigue (38 vs 63), emotional well-being (71 vs 80), social functioning (70 vs 87), pain (66 vs 85), and general health (53 vs 79) (Fig. 3).

Discussion

Although challenging to implement and establish, longitudinal SARS-CoV-2 biobanking efforts are a valuable investment and resource to expedite research and further our knowledge of COVID-19 and PASC [11, 22, 34]. In this cohort, obesity, age, male sex, and Hispanic/Latinx ethnicity were risk factors for severe COVID-19.

These clinical characteristics have been previously associated with severe disease [35–37], validating the NoCo-COBIO cohort. Hospitalized patients were also significantly more likely to suffer from PASC than non-hospitalized participants, similar to what has been previously reported for PASC [4, 5, 7]. The duration of PASC in this prospective cohort analysis is extensive, and we found that symptoms persisted in 89% of hospitalized participants at 90–174 days post infection, and in 90% after 174 days. Some of these participants required prolonged hospital stay, and many symptoms could be attributed to injuries or sequelae sustained from ICU stay alone [38]. However, those hospitalized with moderate disease (oxygen requirement of 1–5 L/min, not requiring ICU stay) were equally as likely to develop PASC as those who had severe disease (oxygen requirement of greater than 5 L/min). Twenty-three percent of our participants who were not hospitalized for COVID-19 also developed PASC. Although those who suffered mild COVID-19 are not at as high of a risk for developing PASC as those who were hospitalized, a staggering amount of people could be affected by PASC given high infection rates in the population. We have enrolled adults with no history of SARS-CoV-2 infection for matched biospecimens ($N = 17$). These non-infected individuals also completed the symptom questionnaire and did not report any symptoms. This is important, given some symptoms of PASC such as anxiety or fatigue could be perceived as attributable to social isolation and decreased activity during the pandemic. The adults with PASC had lower quality of life scores on SF-36 surveys when compared to those without PASC, consistent with previous research [39]. PASC could further burden our health care system during an already strained pandemic time, and continued prospective follow-up is essential to understand the pathophysiology underlying the physical difficulties and emotional complications of PASC [40, 41]. We aim to further analyze our cohort to find immunologic, metabolic, microbial, proteomic, and long-term clinical differences in those with and without PASC. Physical examinations and symptom surveillance over time increase the significance of this biorepository as it allows for depth during examination of those with post-viral sequelae. The administration of quality-of-life questionnaires is an additional unique aspect of this protocol, providing a structured tool to further assess those with PASC. This multifaceted approach to post-viral symptom surveillance is of important correlative and potential causal biological value with the linkages to innumerable data points and analytes that are under investigation from the specimens.

Though we were able to include individuals with Hispanic or Latinx ethnicity, the lack of racial diversity is one major shortcoming of the biorepository and we aim



to enroll participants of various races to the biobank. Another shortcoming is the lack of a control group. The non-infected adults enrolled were healthier and younger than the COVID-19 infected participants. We do seek to enroll a participant-matched control group for age, BMI, sex and other co-morbidity characteristics. Additionally, the Cameron Peak wildfire was a major disturbance to air quality and outdoor activity in northern Colorado during the August–October 2020 portion of our data collection, which may have affected health perception and symptoms.

This biobank protocol with a manual of operations and standard operating procedures provides a template for other academic-clinical teams that reside outside of traditional metropolitan settings to replicate for ensuring compliance and follow-up for patient-matched, multi-matrix biospecimens. These stored sample sets are needed for improving diagnostic designs, advancing therapeutics research and development of SARS-CoV-2 vaccines, as well as understanding those with prolonged course of illness and those without PASC.

Conclusions

People have diverse and complex courses of illness from COVID-19 across organ systems. In this cohort, patients who were hospitalized for COVID-19 were more likely to have PASC than those not requiring hospitalization, yet the 23% of patients who were not hospitalized and developed PASC also merit research attention and quality of life assessments. This patient-matched, multi-matrix, longitudinal biorepository from COVID-19 survivors will allow for current and future research to better understand the pathophysiology of disease, prolonged symptoms and to identify targeted interventions to reduce risk for PASC.

Abbreviations

PASC: Post-acute sequelae of COVID-19; NoCo-COBIO: Northern Colorado SARS-CoV-2 Biorepository; SARS-CoV-2: Severe acute respiratory syndrome-coronavirus-2; EMR: Electronic medical records; PBMCs: Peripheral blood mononuclear cells; CSU: Colorado State University; UCH: University of Colorado Health System; PCR: Polymerase chain reaction; PVH: Poudre Valley Hospital; MCR: Medical Center of the Rockies; TRD: Trauma Research Department; IRB: Institutional Review Board; REDCap: Research Electronic Data Capture; SF-36: Rand 36 health survey; VTm: Viral transport media; CPTs: Cell preparation tubes; BSL-3: Biosafety level-3; BSL-2: Biosafety level-2; CDC: Centers for Disease Control and Prevention; FBS: Fetal bovine serum; DMSO: Dimethyl sulfoxide; qPCR: Quantitative PCR; BMI: Body mass index; COPD: Chronic obstructive pulmonary disease; CBC: Complete blood count; CMP: Comprehensive metabolic panel; Coag: Coagulation

Acknowledgements

We want to thank all the patients/study participants involved in the longitudinal cohort and for creation of this research biobank. The authors would like to thank CSU collaborators to this effort. Drs. Carol Wilusz and Pankaj Trivedi for contributions to the fecal RNA and microbiota analysis, and Dr. Sangmi Pallickara and Shriram Gaddam for the biobank database development. Dr. Emily Gallichotte and Emily Fitzmeyer for qPCR analysis. In addition, Emma McGinnis and Sarah Mast from the CSU Human Performance Clinical Research Laboratory for their phlebotomy assistance to this study.

Authors' contributions

SML, BAB, TH, OA, SS, MHT, JD, and EPR conceptualized the creation of the biorepository for longitudinal data collection and future interdisciplinary research applications. EPR and JD contributed to funding acquisition, regulatory oversight, and serve as principal investigators of institutional review board (IRB) protocols, material transfer and data use agreements (MTA, DUA). SML, BAB, SS, TLW, TSD, KB, MT, JH, BRM, TH, OA, LZ, JD, and GDE curated the data. SML, BAB, KM, JD, and EPR verified, analyzed, and interpreted the data. SML, SS, BAB and EPR drafted and critically reviewed the article. All authors revised, discussed, and approved the final version of the manuscript.

Funding

The Northern Colorado Biorepository project was created and designed with funding and translational research infrastructure in the Colorado State University department of Environmental and Radiological Health Sciences and with pilot funds obtained from the CSU Vice President for Research Office to Dr. Elizabeth P. Ryan. This project was initiated in partnership with University of Colorado Health, Northern Colorado Trauma Research Department and funding support by Dr. Julie Dunn. Ryan and Dunn provide oversight for the study protocol and longitudinal biospecimens and patient data collections, interpretation of data, analysis and in writing of the manuscript.

Availability of data and materials

All data available for this study are presented in the manuscript. Additional information regarding the status of the biorepository and continuous enrollment is available on the trial registration site.

Declarations

Ethics approval and consent to participate

This study was approved by Colorado State University Research Integrity and Compliance Review Office Institutional Review Board (IRB; protocol ID 20-10063H) and University of Colorado Health (Colorado Multiple Institutional Review Board 20-6043) and is registered with [ClinicalTrials.gov \(NCT04063677\)](https://clinicaltrials.gov/ct2/show/study/NCT04063677). All participants provided written informed consent to participant and this process was administered by University of Colorado Health Trauma Research Department program staff or Colorado State University program managers. Participants had the option to revoke their consent at any point throughout the study and have signed additional informed consent forms with any amendments to the study protocol.

Consent for publication

Not applicable.

Competing interests

The authors declare that they have no competing interests.

Author details

¹Department of Environmental and Radiological Health Sciences, Colorado State University, 1601 Campus Delivery, Fort Collins, CO 80523, USA. ²Department of Food Science and Human Nutrition, Colorado State University, Fort Collins, CO, USA. ³Department of Clinical Sciences, Colorado State University, Fort Collins, CO, USA. ⁴Department of Microbiology, Immunology and Pathology, Colorado State University, Fort Collins, CO, USA. ⁵Department of Biomedical Sciences, Colorado State University, Fort Collins, CO, USA. ⁶University of Colorado Anschutz School of Medicine, Aurora, CO, USA. ⁷University of Colorado Health, Medical Center of the Rockies, Loveland, CO, USA.

Received: 23 April 2021 Accepted: 25 June 2021

Published online: 13 July 2021

References

1. Wu F, Zhao S, Yu B, Chen Y-M, Wang W, Song Z-G, et al. A new coronavirus associated with human respiratory disease in China. *Nature*. 2020;579(7798): 265–9. <https://doi.org/10.1038/s41586-020-2008-3>.
2. COVID-19 Map. Johns Hopkins Coronavirus Resource Center. [cited 2020 Dec 5]. Available from: <https://coronavirus.jhu.edu/map.html>.

3. Huang C, Huang L, Wang Y, Li X, Ren L, Gu X, et al. 6-month consequences of COVID-19 in patients discharged from hospital: a cohort study. *Lancet*. 2021;397(10270):220–32. [https://doi.org/10.1016/S0140-6736\(20\)32656-8](https://doi.org/10.1016/S0140-6736(20)32656-8).
4. Tenforde MW. Symptom duration and risk factors for delayed return to usual health among outpatients with COVID-19 in a multistate health care systems network — United States, March–June 2020. *MMWR Morb Mortal Wkly Rep*. 2020;69:993 [cited 2021 Feb 4] Available from: <https://www.cdc.gov/mmwr/volumes/69/wr/mm6930e1.htm>.
5. Carfi A, Bernabei R, Landi F, for the Gemelli Against COVID-19 Post-Acute Care Study Group. Persistent Symptoms in Patients After Acute COVID-19. *JAMA*. 2020;324(6):603.
6. Ramakrishnan A, Zreloff J, Moore MA, Bergquist SH, Cellai M, Higdon J, et al. Prolonged symptoms after COVID-19 infection in outpatients. *Open Forum Infect Dis*. 2021;8(3):ofab060. [cited 2021 Feb 4]. <https://doi.org/10.1093/ofid/ofab060>.
7. Nehme M, Braillard O, Alcoba G, Aebischer Perone S, Courvoisier D, Chappuis F, et al. COVID-19 Symptoms: longitudinal evolution and persistence in outpatient settings. *Ann Intern Med* 2020; [cited 2021 Feb 4]; Available from: <https://www.acpjournals.org/doi/full/10.7326/M20-5926>.
8. Davis HE, Assaf GS, McCorkell L, Wei H, Low RJ, Re'em Y, et al. Characterizing long COVID in an international cohort: 7 months of symptoms and their impact. *medRxiv*. 2021;2020.12.24.20248802.
9. Nalbandian A, Sehgal K, Gupta A, Madhavan MV, McGroder C, Stevens JS, et al. Post-acute COVID-19 syndrome. *Nat Med*. 2021;27(4):601–15.
10. Rando HM, Bennett TD, Byrd JB, Bramante C, Callahan TJ, Chute CG, Davis HE, Deer R, Gagnier J, Korashy FM, Liu F, McMurry JA, Moffitt RA, Pfaff ER, Reese JT, Revelo R, Robinson PN, Saltz JH, Solomonides A, Sule A, Topaloglu U, Haendel MA. Challenges in defining Long COVID: Striking differences across literature, Electronic Health Records, and patient-reported information. *medRxiv [Preprint]*. 2021;2021.03.20.21253896. <https://doi.org/10.1101/2021.03.20.21253896>.
11. Vaught J. Biobanking during the COVID-19 pandemic. *Biopreservation Biobanking*. 2020;18(3):153–4. <https://doi.org/10.1089/bio.2020.29069.jiv>.
12. Peeling RW, Boeras D, Wilder-Smith A, Sall A, Nkengasong J. Need for sustainable biobanking networks for COVID-19 and other diseases of epidemic potential. *Lancet Infect Dis*. 2020;20(10):e268–73. [https://doi.org/10.1016/S1473-3099\(20\)30461-8](https://doi.org/10.1016/S1473-3099(20)30461-8).
13. Stergachis AB, Weiss ST, Green RC. Biobanks could identify medically actionable findings relevant for COVID-19 clinical care. *Nat Med*. 2020;26(7):991. <https://doi.org/10.1038/s41591-020-0953-x>.
14. Ragin C, Park JY. Biospecimens, biobanking and global cancer research collaborations. 2014 [cited 2020 Dec 4]. Available from: <http://ecancer.org/en/journal/article/454-biospecimens-biobanking-and-global-cancer-research-collaborations>.
15. COVID-19 Biospecimens: A Must-Have Guide for Research and Development. [cited 2020 Dec 4]. Available from: <http://www.biocompare.com/Bench-Tips/565358-COVID-19-Biospecimens/>.
16. Lima R, Gootkind EF, De la Flor D, Yockey LJ, Bordt EA, D'Avino P, et al. Establishment of a pediatric COVID-19 biorepository: unique considerations and opportunities for studying the impact of the COVID-19 pandemic on children. *BMC Med Res Methodol*. 2020;20 [cited 2020 Dec 4] Available from: <https://www.ncbi.nlm.nih.gov/pmc/articles/PMC7483494/>.
17. Shook LL, Shui JE, Boatin AA, Devane S, Croul N, Yonker LM, et al. Rapid establishment of a COVID-19 perinatal biorepository: early lessons from the first 100 women enrolled. *BMC Med Res Methodol*. 2020;20(1):215. <https://doi.org/10.1186/s12874-020-01102-y>.
18. Huang S-F, Huang Y-C, Chang F-Y, Lin J-C, Chiu C-H, Chen C-W, et al. Rapid establishment of a COVID-19 biobank in NHRI by National Biobank Consortium of Taiwan. *Biom J*. 2020;43(4):314–7.
19. Covid-19 Biobank | Translational Research | Brown University. [cited 2020 Dec 5]. Available from: <https://www.brown.edu/initiatives/translational-research/covid-19-biobank>.
20. DOM COVID-19 Biospecimen Requests | Department of Medicine. [cited 2020 Dec 4]. Available from: <https://dom.pitt.edu/biospec/>.
21. COVID-19 Detection Tests in Different Body Fluids - Full Text View - *ClinicalTrials.gov*. [cited 2020 Dec 4]. Available from: <https://clinicaltrials.gov/ct2/show/NCT04473352>.
22. Coppola L, Cianflone A, Grimaldi AM, Incoronato M, Bevilacqua P, Messina F, et al. Biobanking in health care: evolution and future directions. *J Transl Med*. 2019;17 [cited 2020 Dec 4] Available from: <https://www.ncbi.nlm.nih.gov/pmc/articles/PMC6532145/>.
23. Williamson EJ, Walker AJ, Bhaskaran K, Bacon S, Bates C, Morton CE, et al. Factors associated with COVID-19-related death using OpenSAFELY. *Nature*. 2020;584(7821):430–6. <https://doi.org/10.1038/s41586-020-2521-4>.
24. Lighter J, Phillips M, Hochman S, Sterling S, Johnson D, Francois F, et al. Obesity in patients younger than 60 years is a risk factor for Covid-19 hospital admission. *Clin Infect Dis Off Publ Infect Dis Soc Am*. 2020; [cited 2020 Dec 5]; Available from: <https://www.ncbi.nlm.nih.gov/pmc/articles/PMC7184372/>.
25. Zelner J, Trangucci R, Naraharisetti R, Cao A, Malosh R, Broen K, et al. Racial disparities in COVID-19 mortality are driven by unequal infection risks. *Clin Infect Dis*. [cited 2020 Dec 5]; Available from: <https://academic.oup.com/cid/advance-article/doi/10.1093/cid/ciaa1723/5998295>.
26. Patel AP, Paranjpe MD, Kathiresan NP, Rivas MA, Khera AV. Race, socioeconomic deprivation, and hospitalization for COVID-19 in English participants of a national biobank. *Int J Equity Health*. 2020;19(1):114.
27. Post-acute COVID-19 syndrome | *Nature Medicine*. [cited 2021 Apr 8]. Available from: <https://www.nature.com/articles/s41591-021-01283-z>.
28. Hays RD, Sherbourne CD, Mazel RM. The RAND 36-item health survey 1.0. *Health Econ*. 1993;2(3):217–27. <https://doi.org/10.1002/hec.4730020305>.
29. Kelly A, Rush J, Shafonsky E, Hayashi A, Votova K, Hall C, et al. Detecting short-term change and variation in health-related quality of life: within- and between-person factor structure of the SF-36 health survey. *Health Qual Life Outcomes*. 2015;13:199 [cited 2021 Apr 6] Available from: <https://www.ncbi.nlm.nih.gov/pmc/articles/PMC4687353/>.
30. Simonnet A, Chetboun M, Poissy J, Raverdy V, Noulette J, Duhamel A, et al. High prevalence of obesity in severe acute respiratory syndrome Coronavirus-2 (SARS-CoV-2) requiring invasive mechanical ventilation. *Obes Silver Spring Md*. 2020;28(7):1195–9. <https://doi.org/10.1002/oby.22831>.
31. Jackson BR, Gold JAW, Natarajan P, Rossow J, Neblett Fanfair R, da Silva J, et al. Predictors at admission of mechanical ventilation and death in an observational cohort of adults hospitalized with COVID-19. *Clin Infect Dis*. [cited 2020 Dec 5]; Available from: <https://academic.oup.com/cid/advance-article/doi/10.1093/cid/ciaa1459/5911241>.
32. Yadav R, Aggarwal S, Singh A. SARS-CoV-2-host dynamics: increased risk of adverse outcomes of COVID-19 in obesity. *Diabetes Metab Syndr*. 2020;14(5):1355–60. <https://doi.org/10.1016/j.dsx.2020.07.030>.
33. Lippi G, Henry BM. Chronic obstructive pulmonary disease is associated with severe coronavirus disease 2019 (COVID-19). *Respir Med*. 2020;167:105941. <https://doi.org/10.1016/j.rmed.2020.105941>.
34. De Souza YG, Greenspan JS. Biobanking past, present and future: responsibilities and benefits. *AIDS Lond Engl*. 2013;27(3):303–12. <https://doi.org/10.1097/QAD.0b013e32835c1244>.
35. Goyal P, Choi JJ, Pinheiro LC, Schenck EJ, Chen R, Jabri A, et al. Clinical characteristics of Covid-19 in New York City. *N Engl J Med*. 2020 [cited 2020 Dec 15]; Available from: <https://www.ncbi.nlm.nih.gov/pmc/articles/PMC7182018/>.
36. Guan W, Ni Z, Hu Y, Liang W, Ou C, He J, et al. Clinical characteristics of coronavirus disease 2019 in China. *N Engl J Med*. 2020;382(18):1708–20. <https://doi.org/10.1056/NEJMoa2002032>.
37. Podewils LJ. Disproportionate incidence of COVID-19 infection, hospitalizations, and deaths among persons identifying as Hispanic or Latino — Denver, Colorado March–October 2020. *MMWR Morb Mortal Wkly Rep*. 2020;69 [cited 2020 Dec 15]. Available from: <https://www.cdc.gov/mmwr/volumes/69/wr/mm6948a3.htm>.
38. Rawal G, Yadav S, Kumar R. Post-intensive care syndrome: an overview. *J Transl Intern Med*. 2017;5(2):90–2. <https://doi.org/10.1515/jtim-2016-0016>.
39. Chen K-Y, Li T, Gong F-H, Zhang J-S, Li X-K. Predictors of health-related quality of life and influencing factors for COVID-19 patients, a follow-up at one month. *Front Psychiatry*. 2020;11 [cited 2021 Apr 13] Available from: <https://www.ncbi.nlm.nih.gov/pmc/articles/PMC7360857/>.
40. Carson G, Carson G, Sigfrid L, Olliaro P, Norton A, Paparella G, et al. Research priorities for long Covid: refined through an international multi-stakeholder forum. *BMC Med*. 2021;19(1):84. <https://doi.org/10.1186/s12916-021-01947-0>.
41. Taquet M, Geddes JR, Husain M, Luciano S, Harrison PJ. 6-month neurological and psychiatric outcomes in 236 379 survivors of COVID-19: a retrospective cohort study using electronic health records. *Lancet Psychiatry*. 2021;8:416.

Publisher's Note

Springer Nature remains neutral with regard to jurisdictional claims in published maps and institutional affiliations.