

ERRATUM

Erratum

In the paper by Tudorascu *et al.* ("Relationship of amyloid beta and neurofibrillary tau deposition in Neurodegeneration in Aging Down Syndrome (NiAD) study at baseline." *Alzheimer's Dement.* 2020; 6:e12096. <https://doi.org/10.1002/trc2.12096>), an error occurred in the preparation of the paper for publication, requiring the following correction.

The image associated with Figure 1 is incorrect. The corrected version of Figure 1 appears below.

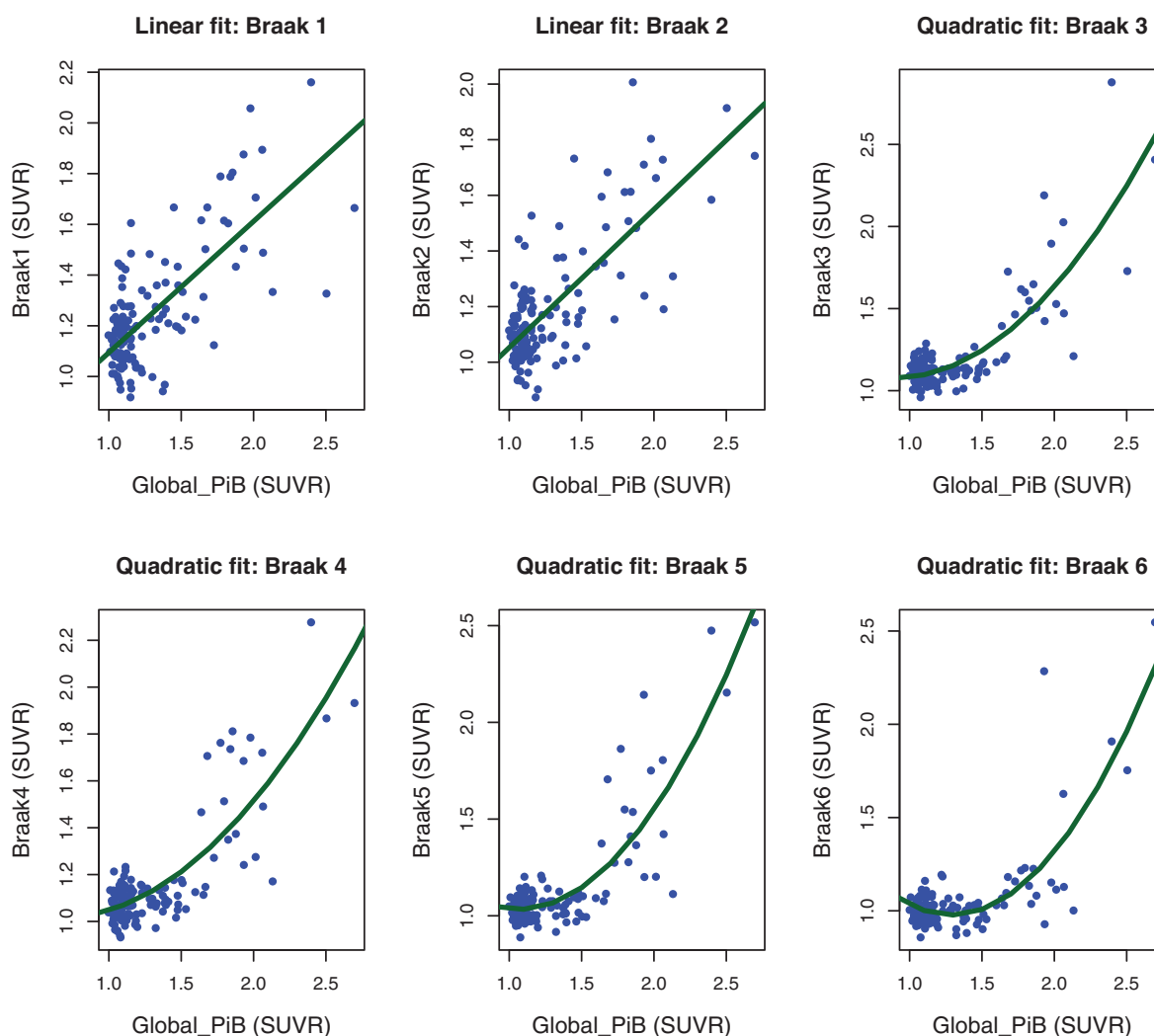


FIGURE 1 Models for AV-1451 with Global-PiB SUVR. The plots are showing the linear and quadratic model fit lines for each Braak region (shown on y-axes) and Global-PiB SUVR (shown on x-axes)

We regret the error.

This is an open access article under the terms of the [Creative Commons Attribution-NonCommercial-NoDerivs](https://creativecommons.org/licenses/by-nc-nd/4.0/) License, which permits use and distribution in any medium, provided the original work is properly cited, the use is non-commercial and no modifications or adaptations are made.

© 2021 The Authors. *Alzheimer's & Dementia: Translational Research & Clinical Interventions* published by Wiley Periodicals, Inc. on behalf of Alzheimer's Association.