



Antiproliferation Activity and Apoptotic Mechanism of Soursop (*Annona muricata* L.) Leaves Extract and Fractions on MCF7 Breast Cancer Cells

Yuni Elsa Hadisaputri ^{1,2}


Ummi Habibah ^{1,2}

Fajar Fauzi Abdullah^{2,3}

Eli Halimah ¹

Mutakin Mutakin¹

Sandra Megantara¹

Rizky Abdulah ¹

Ajeng Diantini¹

¹Faculty of Pharmacy, Universitas Padjadjaran, Jatinangor, West Java, 45363, Indonesia; ²Central Laboratory, Universitas Padjadjaran, Jatinangor, West Java, 45363, Indonesia; ³Department of Chemistry, Faculty of Mathematic and Sciences, Universitas Padjadjaran, Jatinangor, West Java, 45363, Indonesia

Introduction: Breast cancer is the second most common cancer in women globally, and the incidence rate has increased annually. Traditional medicine is frequently used as a cancer treatment, and soursop or *Annona muricata* L. (*A. muricata*) is a traditional medicinal plant that has been widely used as an anticancer treatment and requires more thorough study.

Methods: In this research, we prepared ethanol extract and three solvents, ie, ethyl acetate, *n*-hexane and water fractions of *A. muricata* leaves and assessed their antiproliferation and cytotoxic activity on MCF7 breast cancer cells compared with that on CV1 normal kidney cells; observation of cell morphology by stained with mixture of propidium iodide and 4',6-diamidino-2-phenylindole indicated that this treatment induced an ongoing process of apoptotic cell death in MCF7 cells. To clarify the cell death mechanism via apoptosis, we assessed the *mRNA* expression in the caspase cascade of *caspase-9*, *caspase-3*, and *PARP-1*, and anti-apoptotic, *Bcl-2* which mediated cytotoxic activity of extracts and ethyl acetate fractions of *A. muricata* leaves against MCF7 cells.

Results: The ethanol extract, ethyl acetate, *n*-hexane, and water fractions of *A. muricata* leaves had IC₅₀ values of 5.3, 2.86, 3.08, and 48.31 µg/mL, respectively, in MCF7 cells but had no activity in CV1 cells. The high cytotoxic activity of *A. muricata* leaves was reflected by changes in the morphology of cancer cells that appeared after 6 h exposure to *A. muricata* leaf extract and ethyl acetate fraction; the membrane and nucleus of cells undergoing apoptosis were characterized by the rupture and loss of membranes and nuclei. The mechanism that mediates this cytotoxic activity in MCF7 cells was mediated through a decrease in the expression of *Bcl-2 mRNA* and an increase in *caspase-9* and *caspase-3 mRNA* expression.

Conclusion: Therefore, the leaves of the medicinal plant *A. muricata* contained compounds that on extraction exerted a highly effective activity as an anticancer treatment for breast cancer via induced apoptotic cell death.

Keywords: soursop, *Annona muricata* L., MCF7 breast cancer cell, cytotoxicity, caspase-cascade

Introduction

Cancer comprises a large group of diseases where the rapid growth of abnormal cells can exceed the body's immune defenses, eventually leading to metastasis, which is the main cause of death from cancer.¹ Breast cancer is the second most common cancer in the world with 2.09 million cases and is by far the most common cancer in women, causing 626,700 deaths in 2018.² In the Asia-Pacific region, the number of deaths from breast cancer is 116,000, of which Indonesia accounts for 17% or around 19,720 people.³

Correspondence: Ajeng Diantini
Faculty of Pharmacy, Universitas Padjadjaran, Jl. Raya Bandung-Sumedang KM.21, Jatinangor, West Java, 45363, Indonesia
Tel +62-22-8428888 Ext. 3510
Email diantini.ajeng@gmail.com



Treatment for breast cancer uses several methods including surgery, chemotherapy, and radiation. However, each method has a weakness, and the success rates for treatments have remained low, even when using anticancer drugs for chemotherapy. Failure in chemotherapy treatment can often occur because of the low selectivity of anticancer drugs and the cancer cell resistance to chemotherapy agents. Cases of drug resistance are encountered with many anticancer drug treatments of cancers such as breast, colon, prostate, and leukemic.⁴ Anticancer drugs generally target cells that are actively proliferating, and therefore, these can cause adverse side effects, especially in highly proliferative tissues and in gastrointestinal systems.⁵

Soursop, *Annona muricata* L. (*A. muricata*), which is commonly known as Graviola in Latin America, has been shown to contain promising compounds that can be used in cancer treatment. *A. muricata* grows in the tropical and subtropical regions of the world, and extracts of this plant contain compounds that are highly effective against cancer cells.^{6–8} Research on *A. muricata* plant extracts has indicated an antiviral effect⁹ and antiparasitic, anti-inflammatory,¹⁰ and antihyperglycemic properties. Additionally, previous studies found that *A. muricata* plant extracts were effective against drug-resistant cancer cells.¹¹

A. muricata is a member of the family Annonaceae. Plant contains acetogenin in the leaves, stems, fruits, and roots. Acetogenins are fatty acid derivatives that contain 32 to 34 carbon chains that terminate in 2-propanol, which forms methyl gamma lactones at the end of the structure. Additionally, between one and three tetrahydrofurans (THF) rings and a variety of hydroxyl, acetyl, and/or ketoxyl groups can be found along the hydrocarbon chain.¹²

Acetogenin has been identified to have cytotoxic ability,¹³ and in vivo studies have demonstrated the efficacy of acetogenin across a range of activities,¹¹ including anti-tumor, pesticide, antihelminthic, antiviral, antimalarial, and antimicrobial.¹⁴ The presence of flavonoids along with acetogenin as an active substance in *A. muricata* provides additional benefits to enable maximum therapeutic effects.¹⁵ Flavonoids are also known to have anticancer activities. Several plants that have polyphenol compounds such as quercetin and flavone flavonoids (2-phenyl-4H-1-benzopyran-4-one) are believed to have chemopreventive properties by reducing the incidence of many types of cancer.⁶

Extracts of *A. muricata* leaves have been tested on human breast cancer cells, including MCF7,⁷ MDA-MB231,⁶ and MDA-MB345S.⁸ A study by Moghadamtousi et al⁸ demonstrated that the ethyl acetate fraction from *A. muricata* leaves had the highest cytotoxicity against MCF7 and MDA-MB-231 cells in the 3-(4,5-dimethylthiazol-2-yl)-2,5-diphenyltetrazolium bromide (MTT) assay after 72 h incubation (IC₅₀ ranged from 5.09 ± 0.41 to 11.36 ± 0.67 µg/mL). The cell death induced by an anticancer agent is programmed cell death or apoptosis. This is an important physiological process that is responsible for homeostatic mechanisms and maintenance of cell populations in tissues.¹⁶ The intervention of Bax and Bcl-2 protein expression is an important factor for determining tumor susceptibility to a given anticancer agent.¹⁷ Anticancer research has also shown that the activation of the nuclear factor-kappa B transcription factor is involved in regulating tumor development that promotes malignant and hemopoietic.¹⁸

This study aimed to clarify the cytotoxic effect of *A. muricata* leaf extract and fractions using MCF7 breast cancer cells compared with effects on CV1 non-cancerous kidney cells and to confirm *A. muricata* leaf extract induced MCF7 cell death via cell staining. Moreover, we assessed mRNA expression levels to clarify the molecular mechanism of MCF7 cell death through apoptosis induced by treatment with *A. muricata* leaf extract and ethyl acetate fractions.

Materials and Methods

Extract of *Annona muricata* L. Leaves

Annona muricata L. (*A. muricata*) leaves were dried under a net in sunlight. The extract was prepared via the maceration method where up to 3.1 kg of *A. muricata* leaves was extracted with up to 50 L of 70% ethanol. After 24 h, the liquid extract was collected. The solvent was then evaporated with a rotary evaporator at 45°C. The extract was concentrated using a freeze dryer (Arayukro, Gimpo, South Korea) at a temperature of –80°C to obtain a thick total extract. The yield of extract was calculated as (weight of extract [g]/weight of dried of *A. muricata* leaves [g]) × 100.

Fractionation of *Annona muricata* L. Leaf Extract

Approximately 30 g of *A. muricata* leaf extract was dissolved in 500 mL of water. The extract solution was poured into a separating funnel, and an *n*-hexane solvent was added with the same volume as the water (1:1). First,

the *n*-hexane phase was collected and then added back to the same volume of *n*-hexane solvent in the water phase. A rotary evaporator was used to obtain a thick fraction from the solvent. The water phase from the fractionation with *n*-hexane was returned to a separating funnel, and ethyl acetate was added with the same volume (1:1). The ethyl acetate phase was collected and then added back to the same volume of ethyl acetate solvent in the water phase. A rotary evaporator was used to obtain a thick fraction from the solvent. The water phase obtained from ethyl acetate fractionation was concentrated using a rotary evaporator. All fraction yields were calculated using the formula, yield fraction = (weight of fraction obtained [g]/weight of thick *A. muricata* leaves extract [g]) × 100.

Thin Layer Chromatography

To ensure that acetogenins were indeed present in the *A. muricata* leaf extract and fractions, thin layer chromatography (TLC) was conducted in this study. The samples used were the *A. muricata* leaf extract and ethyl acetate fraction that had the smallest IC₅₀ value. TLC used a comparison of the *n*-hexane:ethyl acetate (2:8) mobile phase. Sample solution was spotted onto silica gel 60 GF254 TLC plate of 1×7 cm (Sigma Aldrich; Merck KGaA, Darmstadt, Germany). Spots were observed under ultraviolet light $\lambda = 254$ and 366 nm. AlCl₃ and Ehrlich solutions were used to visualize all the spots on the plate. Flavonoid compounds fluoresce with a yellow-green color after being sprayed with AlCl₃, whereas the acetogenin compound has a pink color when sprayed with Ehrlich reagents and after heating. The retention factor (Rf) value was calculated by the formula Rf = the distance from the starting point to the center of the spot on the TLC plate/the distance from the starting point to the solvent front.

Cell Culture

The MCF7 breast adenocarcinoma, CV1 normal kidney to represent non-cancerous cell, A549 lung carcinoma and HeLa cervical cancer cell lines were purchased from the American Type Culture Collection. MCF7 cells were cultured in Eagle's Minimum Essential Medium (EMEM) (Sigma Aldrich; Merck KGaA), CV1 and A549 cells were cultured in RPMI 1640 medium (Gibco), while HeLa cells were cultured in Dulbecco's Modified Eagle Medium (Sigma Aldrich; Merck KGaA); All of medium were supplemented with 10% fetal bovine serum (Sigma Aldrich; Merck KGaA) and 100 U/mL penicillin and

100 µg/mL streptomycin (Sigma Aldrich; Merck KGaA). Cells were cultured in a CO₂ incubator with 5% CO₂ at 37°C. Media was replaced once every 2 days. The cell condition was checked every day using an IX53 Inverted Microscope (Olympus Corp, Tokyo, Japan).

Cell Proliferation Test

Cytotoxicity of *A. muricata* leaf extract and *n*-hexane, ethyl acetate, and water fractions was tested on the MCF7 breast cancer cell line, and extract and ethyl acetate fractions were assessed with CV1 cells; both tests used the 3-(4,5-dimethylthiazol-2-yl)-5-(3-carboxymethoxyphenyl)-2-(4-sulfophenyl)-2H-tetrazolium (MTS) assay. Cell viability was determined using CellTiter 96[®] Aqueous One Solution Cell Proliferation Assay (Promega Corp, Madison, Wisconsin, USA) based on the manufacturer's instructions. A range of concentrations of *A. muricata* leaf extract and fractions at 0.97, 3.9, 15.6, 62.5, and 250 µg/mL were dissolved in 10% dimethyl sulfoxide (Sigma Aldrich; Merck KGaA) solvent. Cell suspension (50 µL, 1.6×10⁶ cells) was added to each well of a 96-well plate (Falcon, Franklin Lakes, NJ, USA), which was incubated at 37°C for 24 h. *A. muricata* leaves extract samples and fractions were added to separate wells, and the plate was incubated at 37°C for 24 and 48 h. The absorbance was read at 490 nm using an Infinite M200 PRO microplate reader (Tecan, Männedorf, Switzerland). The value of cell proliferation inhibition (CPI) rate (%) was calculated with the formula: CPI rate (%) = (1 – OD₄₉₀ of the untreated cells) × 100.

Cell Colony Assay

MCF7 cells were added at 500 cells per cell culture flask and incubated for 24 h. Cells were treated with samples of *A. muricata* leaf extract or ethyl acetate fraction at 0, 5, 10, and 25 µg/mL. Each test was conducted in triplicate and was then re-incubated for 10 days until there were at least 50 cells in each individual colony. During the incubation period, 10 mL of EMEM (Sigma Aldrich; Merck KGaA) media was replaced every 3 days. The cells formed were stained using 2.5 mL Giemsa dye (Wako, Osaka, Japan), incubated for 30 min at room temperature, and then washed with running water.¹⁸ The number of colonies that had been formed was counted using an IX53 Inverted Microscope (Olympus Corp). The survival rate of colonies (%) was calculated with the following formula: survival rate (%) = (number

of colonies formed after treatment/number of colonies formed without treatment) × 100.

Staining Test for MCF7 Breast Cancer Cells

Cells were plated and incubated for 24 h. Cells were then treated in triplicate with *A. muricata* leaf extract samples or ethyl acetate fractions together with negative controls. The concentration of *A. muricata* leaf extract sample and ethyl acetate fraction was adjusted according to each IC₅₀ concentration; 5.3 and 2.86 µg/mL. Cells were incubated for 6 h in a CO₂ incubator and rinsed with a phenol-free medium carefully at room temperature. Up to 200 µL of a mixture of 4',6-diamidino-2-phenylindole (DAPI) (Sigma Aldrich; Merck KGaA) and propidium iodide (PI) (Sigma Aldrich; Merck KGaA) was added, and incubation was continued at room temperature without light for 20 min.⁷ Following this, cells were observed under fluorinated ZEISS Apotome.2 (Carl Zeiss, Germany) microscopes using Cy3 and DAPI filters.

RNA Extraction and Polymerase Chain Reaction (PCR)

RNA was isolated from cells exposed to extract or ethyl acetate fraction of *A. muricata* leaves at 0, 12, and 24 h. A Miniprep[®] Directzol RNA kit (Zymo Research, CA, USA) was used to isolate RNA. The Reverse Transcriptase PCR (RT-PCR) reaction was completed using Labcycler thermal cycler (SensoQuest, Göttingen, Germany) according to the manufacturer's instructions. The quantity of isolated RNA was measured using the A260/A280 ratio with an Infinite M200 PRO multimode microplate reader (Tecan) and a GelPilot[®] DNA loading dye (Qiagen, Hilden, Germany) kit according to the manufacturer's instructions. All primers were purchased from Macrogen Inc. (Seoul, South Korea) with the specifications as shown in Table 1 with 35 cycles of amplification. The results were quantified via electrophoresis and band density calculation. The mRNA expression from target genes was quantified by the image processing program, ImageJ ver. 1.53e (NIH, Bethesda, MD, USA). Each sample was tested at least three times.

Statistical Analysis

Data are presented as an average ± standard deviation of each group data. The statistical assessment for mRNA expression was conducted using IBM SPSS statistic 25

Table 1 Temperature Optimization for Each Primer

Primer		Sequences	T* (°C)
Caspase-9	Forward	5'-AAGTGACCCTCCCAAGTAGC-3'	60.5
	Reverse	5'-GTTCTGGCCAGGTCTCTTCT-3'	
Caspase-3	Forward	5'-AAAATACCAGTGGAGGCCGA-3'	58.4
	Reverse	5'-GCACAAAGCGACTGGATGAA-3'	
PARP-1	Forward	5'-TGGAACATCAAGGACGAGCT-3'	60.5
	Reverse	5'-CATCGCTCTTGAAGACCAGC-3'	
Bcl-2	Forward	5'-TCCTCTTTACTGCGCCAGG-3'	60.5
	Reverse	5'-GAGTATTTGTCAGCGAGGG-3'	
GAPDH	Forward	5'-AAGGTGAAGGTCGGAGTCAAC-3'	57.3
	Reverse	5'-CTTGATTTGGAGGGATCTCG-3'	

Note: *T, annealing temperature.

(IBM Corp., NY) assessed by One way ANOVA and Tukey post hoc test. A P value of <0.05 was considered statistically significantly different.

Results

Extraction and Fractionation of *A. muricata* Leaves and Acetogenin Detection

The yield of the extract obtained from approximately 3.1 kg of *A. muricata* leaves was 17.01% at 527.39 g. We used 155 g of *A. muricata* leaf extract for fractionation and obtained fraction yields of 0.5% (0.761 g), 19.01% (26.074 g), and 85% (116.548 g) for the *n*-hexane, ethyl acetate, and water fractions, respectively. A TLC test pattern of the *A. muricata* extract using *n*-hexane:ethyl acetate (2:8) produced five spots. The spot with a R_f value = 0.4 ([Supplementary Table 1](#)) indicated the presence of an acetogenin compound. The evidence for the presence of acetogenin was further strengthened by TLC results that showed spots from the ethyl acetate fraction of *A. muricata* leaves at a R_f value = 0.4 ([Supplementary Table 1](#)), which had a pink-red color with AlCl₃ solution and a pink color with Ehrlich solution ([Supplementary Figure 1](#)).

Ethyl Acetate Fraction Had the Most Effective Inhibitory Activity of MCF7 Cells Proliferation

We assessed the inhibitory activity of samples for 24 h against MCF7 and CV1 cells. The best IC₅₀ values for the *A. muricata* leaf extract obtained against MCF7 breast cancer cells were from 5.3 µg/mL ethanol extract,

Table 2 IC₅₀ Values 24 h of *A. muricata* Leaves Extract, and It's Fractions; ie, Ethyl Acetate, *n*-Hexane, and Water Fraction on MCF7 and CV1 Cells

Sample	IC ₅₀ (µg/mL)	
	MCF7	CV1
Extract	5.3	n.d.*
Ethyl acetate fraction	2.86	n.d.*
<i>n</i> -Hexane fraction	3.08	n.d.*
Water fraction	48.31	n.d.*

Abbreviations: *n.d., not determined.

whereas ethyl acetate, *n*-hexane, and water fractions produced effective IC₅₀ values at 2.86, 3.08, and 48.31 µg/mL, respectively. The ethyl acetate fraction against MCF7 cells had the most effective inhibitory ability with an IC₅₀ value of 2.86 µg/mL and did not have any cell inhibitory effect on CV1 cells (Table 2). The graph of *A. muricata* leaves extract and fractions proliferation assay results is shown in Figure 1. *A. muricata* leaves extract and ethyl acetate fractions also assessed on A549 and HeLa cell proliferation ability after treatment for 48 h (Supplementary Table 2).

Cell Colony Assay

Figure 2 shows the results of the cell colony assay for MCF7 breast cancer cell treated with *A. muricata* extract.

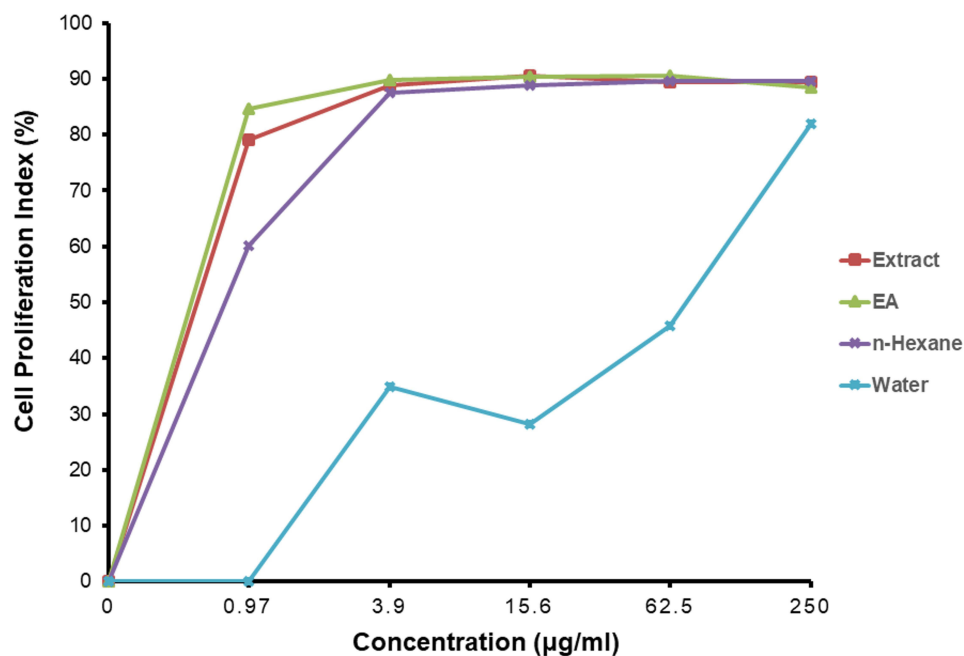


Figure 1 *A. muricata* L. extract and fractions, ie, ethyl acetate, *n*-hexane and water, effect on MCF7 cells proliferation. MCF-7 cells treated in various concentrations of *A. muricata* L. for 24 h. Data are presented as mean ± standard deviation.

Higher concentrations of the *A. muricata* leaf extract had an inverse reciprocal effect on colony formation, and the survival rate of the colony decreased with increased concentration. Meanwhile, the results of the colony assay on cells treated with ethyl acetate fraction of *A. muricata* leaf did not survive and forming a colony, so that the data could not be graphed and displayed.

Observation of Morphology Cells Treated with *A. muricata* Leaf Extract and Ethyl Acetate Fraction

Cell changes were observed after 6 h of treatment with *A. muricata* leaf extract and ethyl acetate fraction. Cell appeared to bleb and rupture into smaller parts (Figure 3B and C) compared with untreated cells (Figure 3A); this cell morphology change is related to apoptosis and the process of cell death. In Figure 3B and C, the cell apoptosis process occurred in MCF7 cells with *A. muricata* leaf extract and fractions of ethyl acetate treatment depended on the IC₅₀ values. The cytotoxic activity of *A. muricata* leaves could be demonstrated by observing the morphology of cancer cells undergoing apoptosis. Cell treatment with the ethyl acetate fraction of *A. muricata* leaves resulted in the membranes and nuclei of cells undergoing apoptosis at a faster rate than that in the control as

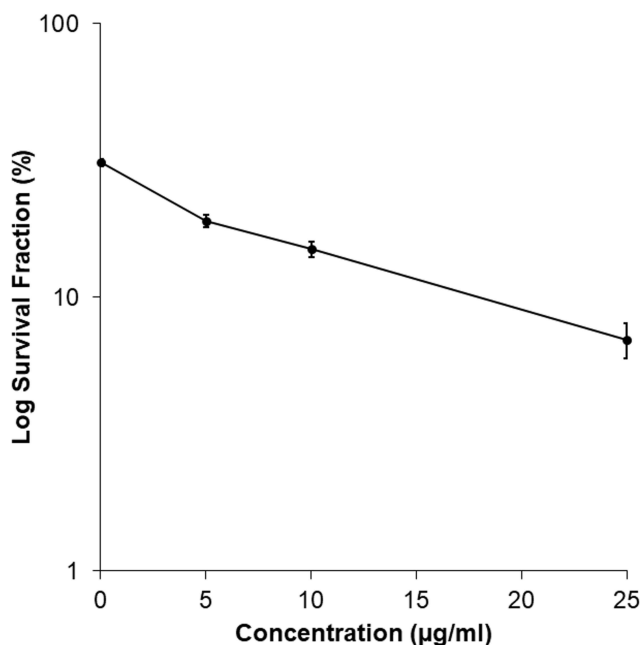


Figure 2 Effect of the *A. muricata* L. Extract on Colony formation of MCF7 cells. The survival rates of colonies were determined by various concentrations of *A. muricata* L. extract. The higher concentration of *A. muricata* L. extract were exposed is 25 µg/mL, the less the MCF7 cell colonies are formed with % survival 22.5%. Whereas MCF7 cells which treated with ethyl acetate fraction of *A. muricata* leaves were not found to form colonies.

characterized by cell rupture and loss of membrane and cell nucleus integrity (Figure 3C).

PCR and Electrophoresis

We used PCR to assess the molecular effect of *A. muricata* leaf extract and ethyl acetate fraction on MCF7 cells (Figure 4). Expression of apoptosis was analyzed in MCF7 cells that were treated with both the *A. muricata* leaf extract and ethyl acetate fraction, bands shown in Figure 4A. This was assessed by measuring the expression of *caspase-3*, *caspase-9*, *PARP-1*, and *Bcl-2*, at 0, 12, and 24 h incubation; *GAPDH* was used as a control. *A. muricata* leaf extract induced initiator caspase expression, as shown by a significant increase in expression of *caspase-9 mRNA* ($P = 0.001$ for both 12 h and 24 h) in MCF7 cells, which was followed with increasing expression of executor caspase, *caspase-3*, after 24 h ($P = 0.001$) treatment. *PARP-1* expression significantly increased by 12 h ($P = 0.001$) but was suppressed at 24 h ($P = 0.001$), whereas *Bcl-2* expression was significantly decreased at 12 ($P = 0.001$). The expression of *caspase-9* significantly decreased after 12 ($P = 0.001$) and 24 h ($P = 0.001$) in MCF7 cells treated with *A. muricata* ethyl acetate fraction. Expression of *caspase-3 mRNA* was significantly increased

at 12 h ($P = 0.004$) in MCF7 cells treated with *A. muricata* ethyl acetate fraction, whereas expression of *PARP-1 mRNA* increased at 12 h ($P = 0.001$) then decreased at 24 h ($P = 0.001$). At the same time, expression of *Bcl-2 mRNA* decreased significantly at both 12 ($P = 0.001$) and 24 h ($P = 0.001$) (Figure 4B).

Discussion

The effectiveness of chemotherapy as a cancer treatment is limited because of adverse side effects and the development of chemoresistance.¹⁹ One plant that may be used as an anticancer agent is *A. muricata*, which has long been used as traditional medicine.¹⁰ Acetogenin, one of the compounds in *A. muricata*, has strong cytotoxic activity and is believed to have a role in killing cancer cells.^{20,21} Here, we used a CPI assay to assess the antiproliferation effect against MCF7 cells using various concentrations of ethanol extract, and ethyl acetate and water fractions of *A. muricata* indicated to have strong cytotoxic activity against MCF7 cells (Table 2), that is stronger than activity against A549 and HeLa cells (Supplementary Table 2). The results of CPI_{50} , the minimum concentration of inhibition, indicating that a lower level of ethyl acetate fraction at 2.86 µg/mL was more effective than 5.3 µg/mL of *A. muricata* leaf extract. This concentration was comparable with that used in the induction of apoptosis in MCF7 cells treated for a short period of time using the ethyl acetate fraction. Morphological changes of MCF7 cells (Figure 2) were also observed for 6 h after being treated with ethyl acetate fraction.

Based on phytochemical screening results, compounds detected in ethanol extract of *A. muricata* leaves include flavonoids, alkaloids, cardiac glycosides, tannins, triterpenoids, saponins, and reducing sugars.²² Aqueous extracts and fractions of *A. muricata* leaves contain alkaloids, terpenoids, flavonoids, coumarin, steroids, fatty acids, phenols, tannins, and saponins, whereas the ethyl acetate fraction contains phenols, saponins, tannins/polyphenols, and flavonoids.²³ *A. muricata* leaves also contain more than 45 acetogenins in the leaves and seeds.²⁴ Identification of acetogenin can be visualized using TLC by the development of pinkish purple-colored spots.²⁴ In this study, TLC used the ethanol extract and fraction of ethyl acetate *A. muricata* leaves with an *n*-hexane:ethyl acetate mix (2:8) (Supplementary Figure 1D) and obtained a Rf value of 0.4 and with a pink-red color after spraying with Ehrlich reagent. Ehrlich reagent spray can be used to detect the presence of compounds that have furan groups

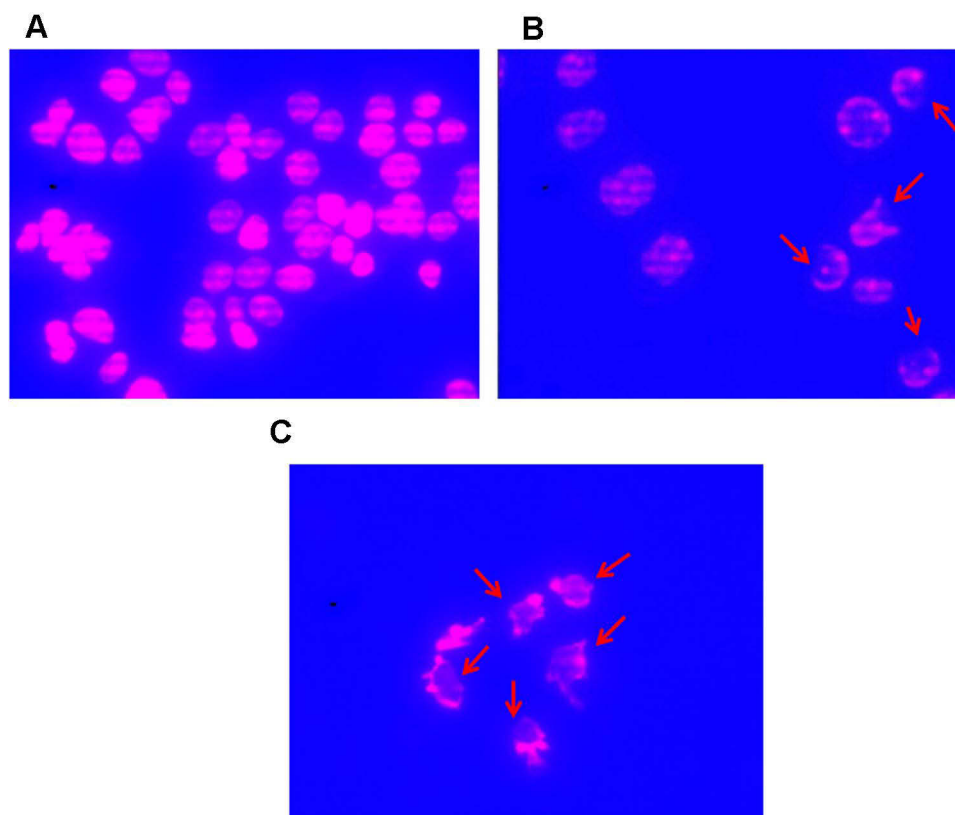


Figure 3 Changes of MCF7 cells form figure. **(A)** MCF7 cells were exposed extracts of *A. muricata* L. for 0 h; **(B)** MCF7 cells after treated with *A. muricata* L. Extract for 6 h; **(C)** MCF7 cells after treated with *A. muricata* L. Ethyl acetate fraction for 6 h. MCF7 cells observed under fluorinated ZEISS Apotome.2 (Carl Zeiss, Germany) microscopes with Cy3 and DAPI filters. MCF7 cells form after treatment with *A. muricata* L. either extracts or ethyl acetate fractions to be inconsistent and rupture to parts (indicated by a red arrow).

such as those present in the structure of acetogenin to produce a red color.²⁵

Based on the level of cytotoxicity, IC_{50} values are divided into three levels including strong (<100 $\mu\text{g/mL}$), moderate (101–200 $\mu\text{g/mL}$), and weak (>201 $\mu\text{g/mL}$),²⁶ *A. muricata* leaves extract and fractions cytotoxicity level is strong. In another study, increased concentrations of *A. muricata* leaf extract significantly induced a decrease in viability of MDA-MB-231 and MCF7 breast cancer cells,^{20,21} the ethyl acetate fraction of *A. muricata* leaves was also significantly cytotoxic against several MCF7 and MDA-MB-231 cancer cells with IC_{50} values of 6.39 and 11.36 $\mu\text{g/mL}$, respectively.⁸ Similarly, we obtained IC_{50} values in the range of 2.86 to 48.31 $\mu\text{g/mL}$ with samples of *A. muricata* extract and ethyl acetate, *n*-hexane, and water fractions, indicating that these have strong cytotoxic activity against MCF7 breast cancer cells (Table 2). The ethyl acetate fraction has a very high toxic value compared with other samples, with an IC_{50} value of 2.86 $\mu\text{g/mL}$. This may be caused by phenols, saponins, tannins/polyphenols, and flavonoids within this fraction²² and, in

particular, acetogenin and flavonoids, which are major toxic compounds.^{21,27} Factors that affect the concentration of active compounds in *A. muricata* may include elements of soil compounds and treatments used to grow *A. muricata*. Overall, the extracts and fractions of *A. muricata* leaves exhibited cytotoxicity toward breast cancer cells in a dose-dependent manner and suppressed cell proliferation. To assess the safety of the compounds contained in *A. muricata*, the effect on the proliferation of non-cancerous CV1 cells was assessed. The results in Table 2 show that the IC_{50} value of CV1 cells treated with *A. muricata* leaf extract and fractions could not be determined, indicating that these are not toxic or inhibitory to non-cancerous cell proliferation. Therefore, the compounds contained in *A. muricata* leaves have selective inhibitory properties on cancer cells that have a high proliferation rate.

The clonogenic assay also confirmed these results by determining anticancer activity after exposure to the *A. muricata* extract and ethyl acetate fraction over an extended period; this assay assessed the effect of test

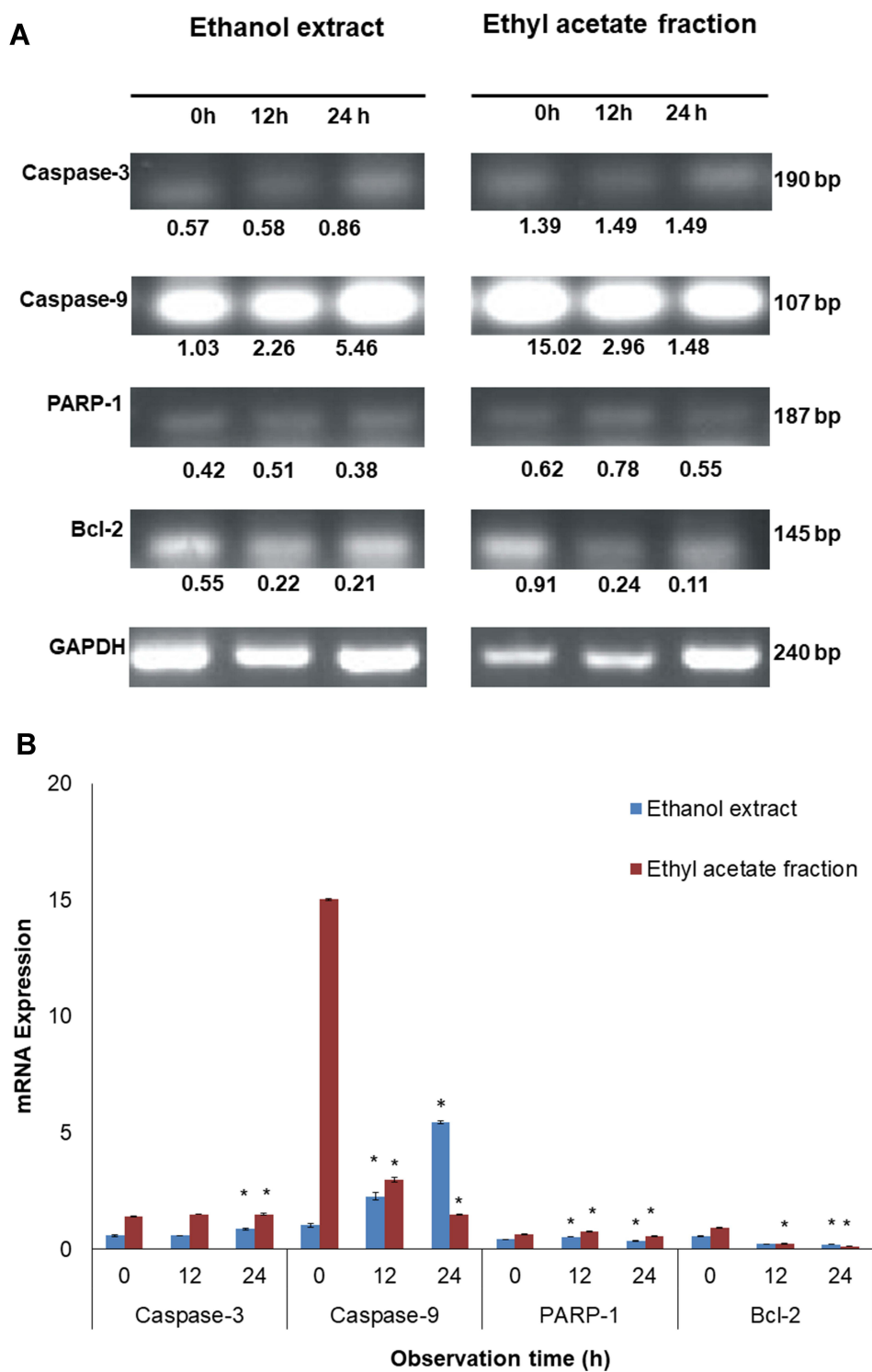


Figure 4 Analysis of apoptotic related protein mRNA expression on MCF7 cells after treatment with *A. muricata* L. extract and fraction of ethyl acetate using PCR. **(A)** Changes in the expression of *caspase-3*, *caspase-9*, *PARP-1* and *bcl-2* mRNA is specified by using the MCF7 cells which treated with extract and ethyl acetate fraction of *A. muricata* L. for 12 and 24 hours by GAPDH as control showed in gel band. **(B)** The intensity of mRNA expression of *caspase-3*, *caspase-9*, *PARP-1* and *bcl-2* in MCF7 cells that showed in band were converted in bar graph. As it can be seen that an increase in the expression of *caspase-3* and *-9* as well as decreased expression of *bcl-2* in cells with *A. muricata* L. extracts. Although in MCF7 cells treated with ethyl acetate fraction of *A. muricata* L. did not show an increase in expression of *caspase-3* and *-9*, there was a decrease in *bcl-2* expression. However, the expression of *PARP-1* in both of them treated with extracts and ethyl acetate fractions of *A. muricata* L. increased the expression at 12 hours which then decreased at 24 hours. * $P < 0.05$.

samples with extended time on human breast cancer cells and their ability to form colonies.²⁸ Cancer cells were unable to form colonies and were characterized by a decreased survival rate with increasing treatment concentration (Figure 2). In another study, treating cells with *A. muricata* leaf extract reduced the number of colonies formed; the number of which substantially decreased with increasing extract concentration.^{20,21} Previous study has reported a good correlation with in vivo testing of tumorigenicity,¹¹ where the cancer clonogenicity results were reduced depending on the concentration after exposure.²⁸

We observed MCF7 cancer cell morphology using microscopy with DAPI staining to determine whether cell nuclei were undergoing apoptosis and compared this with staining using PI, which cannot penetrate cell membranes and is used to dye necrotic cell DNA.²⁹ The morphology of MCF7 cells indicated that these were apoptotic as demonstrated by the fragmentation of the nucleus, constricted cytoplasm, and formed apoptotic bodies.³⁰ Apoptosis was observed in MCF7 cells that were treated with *A. muricata* leaf extract and ethyl acetate fraction and that induced morphological changes where the MCF7 cell membrane and cell nucleus were seen to rupture and disintegrate (Figure 3B and C). When treated with the ethyl acetate fraction, the apoptotic form was disordered, and the cell membranes and nuclei start to disappear, whereas with ethyl acetate extract treatment, the cell membrane appears to undergo apoptosis; however, a number of cells still maintain their normal shape. Thus, the compounds contained in the *A. muricata* plant have a very high cytotoxic ability as indicated by the small IC₅₀ value and an apoptotic morphology at 6 h incubation with the ethyl acetate fraction, which had higher cytotoxic and apoptotic abilities than that of the *A. muricata* leaf extract (Figure 3C).

The apoptotic process induction mechanism of acetogenin blocks the production of Adenosine triphosphate (ATP) in the mitochondria of cancer cells so that the energy supply is interrupted and cancer cells become weak until cell death occurs.³¹ Acetogenin reduces ATP production by inhibiting the NADH: ubiquinone oxidoreductase (Complex I) in the electron transport system in mitochondria and ubiquinone that is associated with NADH oxidase in tumor cell plasma membranes³² that lead to induce the process of apoptosis.³¹ The lactone ring contained in the acetogenin molecule has an important role in the anticancer mechanism. Annonacin is known as

the most common acetogenin present in *A. muricata* leaves and most of the acetogenin contained in *A. muricata* contains a THF ring.²⁴ Additionally, acetogenin induces apoptosis by inhibiting the expression of Bcl-2 and Bcl-xL antiapoptotic proteins, enabling the increase of expression of Bax and Bad pro-apoptotic proteins,³³ and also increasing expression of caspase 3/7 and caspase 9 at mRNA and protein levels.³⁴ In this study, the expression of Bcl-2 mRNA decreased after treatment with *A. muricata* leaf extract and ethyl acetate fraction. These results indicate that the decrease in Bcl-2 protein expression has an important role in inducing apoptosis in MCF7 cells, where the mechanism of apoptosis activates caspase-9 as an initiator of apoptosis³⁵ and caspase-3 as one of the apoptotic executors.³⁶ Here, we characterized the molecular changes in MCF7 cells that were affected by exposure to *A. muricata* leaf extract and ethyl acetate fraction for up to 24 h. Both *A. muricata* leaf extract and ethyl acetate fraction induced MCF7 cells to enter apoptosis, but there was a difference in apoptotic-related gene expression (Figure 4). Broadly speaking, in MCF-7 cells treated with *A. muricata* leaf extract, the expression of *caspase-9* and *-3 mRNA* significantly increased, whereas that of *Bcl-2* expression significantly decreased; there was no significant increase in expression of *PARP-1 mRNA*, indicating that the apoptotic process was not finished yet. A different phenomenon occurred in MCF7 cells treated with the ethyl acetate fraction, where expression of *caspase-9* and *-3 mRNA* did not increase, but the expression of *PARP-1 mRNA* started to decrease, whereas that of expression of *Bcl-2* expression did significantly decrease. This indicated that the apoptotic process occurred faster in MCF7 cells treated with the ethyl acetate fraction of *A. muricata* leaves than that treated with the ethanol extract. This result supports the observed morphological changes that indicated that apoptosis occurred when MCF7 cells were treated with the ethyl acetate fraction with cell rupture and loss of cell membranes and nuclei at 6 h incubation (Figure 3). The Bcl-2 protein affects the permeability of the mitochondrial membrane and will affect the release of cytochrome c. Decreased expression of Bcl-2 will result in the induction of apoptosis as the mitochondrial release of cytochrome c is no longer inhibited, and this then activates the caspase pathways to produce caspase-3 as apoptotic executors.³⁵

Overall, a wide range of phytochemicals can be extracted from *A. muricata*, which include acetogenin; the synergistic effects of these phytochemicals may be the underlying

principle behind the chemotherapeutic potential of *A. muricata*. Extrinsic apoptosis testing needs to be explored and further testing completed to identify the active substances involved in anticancer effects.

Conclusions

In conclusion, the treatment of breast cancer cells using the *A. muricata* leaf ethyl acetate fraction produced a higher level of cytotoxicity that was responsible for the antiproliferation activity than the *A. muricata* leaf extract; this was enabled through a significant reduction in the integrity of mitochondrial membranes that resulted in the induction of apoptosis of breast cancer cells. The apoptotic mechanism can be seen from changes in cell morphology and in the expression of *Bcl-2*, *caspase-9*, and *caspase-3 mRNA* that mediate the cytotoxic activity of the ethyl acetate fraction of *A. muricata* leaf on MCF7 cells.

Abbreviations

A. muricata, *Annona muricata* Linn; IC₅₀, inhibitor concentration 50%; THF, tetrahydrofuran; NF-κB, nuclear factor-kappa B; TLC, thin layer chromatography; R_f, retention factor; MTS, 3-(4,5-dimethylthiazol-2-yl)-5-(3-carboxymethoxyphenyl)-2-(4-sulfophenyl)-2H-tetrazolium; MTT, 3-(4,5-dimethylthiazol-2-yl)-2,5-diphenyltetrazolium bromide; DMSO, Dimethyl sulfoxide; CPI, cell proliferation inhibition; DAPI, 4',6-diamidino-2-phenylindole; PI, propidium iodide; RT, Reverse Transcriptase; PCR, polymerase chain reaction; ATP, Adenosine triphosphate.

Acknowledgments

The authors would like to thank Professor Unang Supratman, M.Si., Ph.D. (Central Laboratory, Universitas Padjadjaran), for providing all the necessary facilities to carry out the present work. The authors would also like to thank Ms. Kusmiati, S.Si. (Central Laboratory, Universitas Padjadjaran), for her excellent technical support and assistance. This study was supported by grant-in-aids from The Indonesian Ministry of Research, Technology, and Higher Education Grant No: 718/UN6.3.1/PL/2017, for AD. Mr. Fajar Fauzi Abdullah has completed his studies and is now working at the Department of Chemistry, Faculty of Mathematics and Natural Sciences, Universitas Garut.

Disclosure

Ms Umami Habibah reports Higher Education Grant from the Indonesian Government during the conduct of the

study and outside the submitted work. The authors report no other potential conflicts of interest in this work.

References

- Faubert B, Solmonson A, DeBerardinis RJ. Metabolic reprogramming and cancer progression. *Science*. 2020;368(6487):eaaw5473. doi:10.1126/science.aaw5473
- Ferlay JR, Colombet M, Soerjomataram I, et al. Estimating the global cancer incidence and mortality in 2018: GLOBOCAN sources and methods. *Int J Cancer*. 2019;144:1941–1953. doi:10.1002/ijc.31937
- Youlden DR, Cramb SM, Yip CH, Baade PD. Incidence and mortality of female breast cancer in the Asia-Pacific region. *Cancer Biol Med*. 2014;11:101–115. doi:10.7497/j.issn.2095-3941
- Jayaraj R, Nayagam SG, Kar A, et al. Clinical theragnostic relationship between drug-resistance specific miRNA expressions, chemotherapeutic resistance, and sensitivity in breast cancer: a systematic review and meta-analysis. *Cells*. 2019;8(10):1250. doi:10.3390/cells8101250
- Kulmira N, Thomas J, Raquel A. Editorial: adverse effects of cancer chemotherapy: anything new to improve tolerance and reduce sequelae? *Front Pharmacol*. 2018;9:245. doi:10.3389/fphar.2018.00245
- Moghadamtousi SZ, Kadir HA, Elham M, Rouhollahi P, Karimian H. *Annona muricata* leaves induced apoptosis in A549 cells through mitochondrial-mediated pathway and involvement of NF-κB. *BMC Complement Altern Med*. 2014;14:299. doi:10.1186/1472-6882-14-299
- Naik AV, Sellappan K. In vitro evaluation of *Annona muricata* L. (Soursop) leaf methanol extracts on inhibition of tumorigenicity and metastasis of breast cancer cells. *Biomarkers*. 2020;25(8):701–710. doi:10.1080/1354750X.2020.1836025
- George VC, Kumar DRN, Rajkumar V, Suresh PK, Kumar RA. Quantitative assessment of the relative antineoplastic potential of the n-butanolic leaf extract of *Annona muricata* Linn. in normal and immortalized human cell lines. *Asian Pacific J Cancer Prev*. 2012;13:699–704. doi:10.7314/apjcp.2012.13.2.699
- Morosetti G, Criscuolo AA, Santi F, Perno CF, Piccione E, Ciotti M. *Ellagic acid* and *Annona muricata* in the chemoprevention of HPV related pre neoplastic lesions of the cervix. *Onco Lett*. 2017;13:1880–1884. doi:10.3892/ol.2017.5634
- Moghadamtousi SZ, Fadaeinasab M, Nikzad S, Mohan G, Ali HM, Kadir HA. *Annona muricata* (Annonaceae): a review of its traditional uses, isolated acetogenins and biological activities. *Int J Mol Sci*. 2015;16(7):15625–15658. doi:10.3390/ijms160715625
- Torres MP, Rachagani S, Purohit V, et al. Graviola: a novel promising natural-derived drug that inhibits tumorigenicity and metastasis of pancreatic cancer cells in vitro and in vivo through altering cell metabolism. *Can Lett*. 2012;323:29–40. doi:10.1016/j.canlet.2012.03.031
- Liaw CC, Liou JR, Wu TY, Chang FR, Wu YC. Acetogenins from annonaceae. *Prog Chem Org Nat Prod*. 2016;101:113–230. doi:10.1007/978-3-319-22692-7_2
- Chang FR, Liaw CC, Lin CY, Chou CJ, Chiu HF, Wu YC. New adjacent bis-tetrahydrofuran annonaceous acetogenins from *Annona muricata*. *Planta Med*. 2003;69:241–246. doi:10.1055/s-2003-38485
- Yang C, Gundala SR, Mukkavilli R, Vangala S, Michelle DR, Aneja R. Synergistic interactions among flavonoids and acetogenins in graviola (*Annona muricata*) leaves confer protection against prostate cancer. *Carcinogenesis*. 2015;36(6):656–665. doi:10.1093/carcin/bgv046
- Dinda B, Dinda S, DasSharma S, Banik R, Chakraborty A, Dinda M. Therapeutic potentials of baicalin and its aglycone, baicalein against inflammatory disorders. *Eur J Med Chem*. 2017;131:68–80. doi:10.1016/j.ejmech.2017.03.004

16. Kim SS, Cho HJ, Kang JY, Kang HK, Yoo TK. Inhibition of androgen receptor expression with small interfering RNA enhances cancer cell apoptosis by suppressing survival factors in androgen insensitive, late stage Lncap cells. *Sci World J.* 2013;519397:1–8. doi:10.1155/2013/519397
17. Martinou JC, Youle RJ. Mitochondria in apoptosis: bcl-2 family members and mitochondrial dynamics. *Dev Cell.* 2011;21:92–101. doi:10.1016/j.devcel.2011.06.017
18. Hadisaputri YE, Miyazaki T, Suzuki S, et al. Molecular characterization of antitumor effects of the rhizome extract from *Curcuma zedoaria* on human esophageal carcinoma cells. *Int J Oncol.* 2015;47(6):2255–2263. doi:10.3892/ijo.2015.3199
19. Kekre N, Griffin C, Mc Nulty J, Pandey S. Pancreatistatin causes early activation of caspase-3 and the flipping of phosphatidylserine followed by rapid apoptosis specifically in human lymphoma cells. *Cancer Chemother Pharmacol.* 2005;56:29–38. doi:10.1007/s00280-004-0941-8
20. Kim JY, Dao TTP, Song K, et al. *Annona muricata* leaf extract triggered intrinsic apoptotic pathway to attenuate cancerous features of triple negative breast cancer MDA-MB-231 cells. *Evid Based Complement Alternat Med.* 2018;10:2018. doi:10.1155/2018/7972916
21. Romli MF, Hamid M, Alitheen NB, Rahman NMA. Anti-cancer effect of *Annona Muricata* Linn Leaves Crude Extract (AMCE) on breast cancer cell line. *BMC Complement Altern Med.* 2016;16(1):311. doi:10.1186/s12906-016-1290-y
22. Gavamukulya Y, Abou-Ellella F, Wamunyokoli F, AEI-Shemy H. Phytochemical screening, anti-oxidant activity and in vitro anticancer potential of ethanolic and water leaves extracts of *Annona muricata* (Graviola). *Asian Pac J Trop Med.* 2014;7(Suppl 1):S355–S363. doi:10.1016/S1995-7645(14)60258-3.31
23. Agu KC, Okolie PN. Proximate composition, phytochemical analysis, and in vitro antioxidant potentials of extracts of *Annona muricata* (Soursop). *Food Sci Nutr.* 2017;5(5):1029–1036. doi:10.1002/fsn3.498
24. Gleye CP, Duret R. Cis-Monotetrahydrofuran acetogenins from the roots of *Annona Muricata*. *J of Nat Prod.* 1998;61:576. doi:10.1021/np970494m
25. Ducheyne P, Heal K, Hutmacher DW, David WG, Kirkpatrick J. *Comprehensive Biomaterials II*. US: Elsevier; 2017:312.
26. Subarnas A, Diantini A, Abdulah R, et al. Antiproliferative activity of primates-consumed plants against MCF7 human breast cancer cell lines. *J Med Res.* 2012;1:038–043. doi:10.1016/j.jep.2019.03.003
27. Yang C, Gundala SR, Mukkavilli R, Vangal S, Michelle DR, Ritu A. Synergistic interactions among flavonoids and acetogenins in graviola (*Annona muricata*) leaves confer protection against prostate cancer. *Carcinogenesis.* 2015;36(6):656–665. doi:10.1093/carcin/bgv046
28. Kuo PL, Hsu YL, Cho CY. Plumbagin induces G2-M arrest and autophagy by inhibiting the AKT/mammalian target of rapamycin pathway in breast cancer cells. *Mol Cancer Ther.* 2006;5(12):5. doi:10.1158/1535-7163.MCT-06-0478
29. Afsar T, Janeen HT, Christine ES, Suhail R, Muhammad RK, Ahmed K. Growth inhibition and apoptosis in cancer cells induced by polyphenolic compounds of *Acacia hydasypica*: involvement of multiple signal transduction pathways. *Sci Rep.* 2016;6(23077). doi:10.1038/srep23077
30. Moongkarndi P, Kosem N, Kaslungka S, Luanratana O, Pongpan N, Neungton N. Antiproliferation, antioxidation and induction of apoptosis by *Garcinia mangostana* (mangosteen) on SKBR3 human breast cancer cell line. *J Ethnopharmacol.* 2004;90:161–166. doi:10.1016/j.jep.2003.09.048
31. Alali FQ, Liu XX, McLaughlin JL. Annonaceous acetogenins: recent progress. *J of Nat Prod.* 1999;62. doi:10.1021/np980406d
32. Kim J, Park EJ. Cytotoxic anticancer candidates from natural resources. *Curr Med Anti Cancer Agents.* 2002;2:485–537. doi:10.2174/1568011023353949
33. Yuan SSF, Chang HL, Chen HW, et al. Selective cytotoxicity of squamocin on T24 bladder cancer cells at the S Phase via a Bax-, Bad-, and Caspase-3-related pathway. *J Life Sci.* 2006;78:869–874. doi:10.1016/j.lfs.2005.05.068
34. Moghadamtousi SZ, Rouhollahi E, Karimian H, et al. The chemoprotective effect of *Annona muricata* leaves against azoxymethane-induced colonic aberrant crypt foci in rats and the apoptotic effect of acetogenin Annonamuricin E in HT-29 cells: a bioassay-guided approach. *PLoS One.* 2015;10:e0122288. doi:10.1371/journal.pone.0122288
35. Elmore S. Apoptosis: a review of programmed cell death. *Toxicol Pathol.* 2007;35:495–516. doi:10.1080/01926230701320337
36. Green DR, Llambi F. Cell death signaling. *Cold Spring Harb Perspect Biol.* 2015;7:a006080. doi:10.1101/cshperspect.a006080

Breast Cancer: Targets and Therapy

Dovepress

Publish your work in this journal

Breast Cancer - Targets and Therapy is an international, peer-reviewed open access journal focusing on breast cancer research, identification of therapeutic targets and the optimal use of preventative and integrated treatment interventions to achieve improved outcomes, enhanced survival and quality of life for the cancer patient.

The manuscript management system is completely online and includes a very quick and fair peer-review system, which is all easy to use. Visit <http://www.dovepress.com/testimonials.php> to read real quotes from published authors.

Submit your manuscript here: <https://www.dovepress.com/breast-cancer—targets-and-therapy-journal>