

Original Article

Evaluation of intracellular survival of *Campylobacter fetus* subsp. *fetus* in bovine endometrial cells by qPCR

Campos Muzquiz, L. G.¹; Martínez Gómez, D.²; Reyes Cruz, T.³
and Méndez Olvera, E. T.^{4*}

¹Department of Genetics and Virology, Faculty of Chemical Sciences, Autonomous University of Coahuila, Saltillo, Mexico; ²Laboratory of Agricultural Microbiology, Department of Agricultural and Animal Production, Metropolitan Autonomous University-Xochimilco, Mexico City, Mexico; ³Biological and Health Sciences Division, Department of Agricultural and Animal Production, Metropolitan Autonomous University-Xochimilco, Mexico City, Mexico; ⁴Laboratory of Molecular Biology, Department of Agricultural and Animal Production, Metropolitan Autonomous University-Xochimilco, Mexico City, Mexico

*Correspondence: E. T. Méndez Olvera, Laboratory of Molecular Biology, Department of Agricultural and Animal Production, Metropolitan Autonomous University-Xochimilco, Mexico City, Mexico. E-mail: etmendez@correo.xoc.uam.mx



10.22099/ijvr.2021.38693.5632

(Received 9 Oct 2020; revised version 2 Feb 2021; accepted 28 Feb 2021)

Abstract

Background: *Campylobacter fetus* subsp. *fetus* is the causal agent of sporadic abortion and infertility in bovines that produces economic losses in livestock. **Aims:** This study evaluates the capability of *C. fetus* subsp. *fetus* to invade and survive in bovine endometrial epithelial cells and attempts to describe a pathogenic mechanism of this microorganism. **Methods:** Primary culture of bovine endometrial epithelial cells was challenged with *C. fetus* subsp. *fetus*. Intracellular bacteria, represented by the number of genomic copies (g.c.) were quantified at 0, 2, 4, 10, and 24 hours post-infection (h.p.i.), by quantitative polymerase chain reaction (qPCR). The presence of intracellular bacteria was evaluated by immunofluorescence and immunohistochemistry. **Results:** The results showed that only viable *C. fetus* subsp. *fetus* could invade endometrial cells. The g.c. number in assays with viable *C. fetus* subsp. *fetus* reached an average value of 656 g.c., remained constant until 4 h.p.i., then decreased to 100 g.c. at 24 h.p.i. In assays with non-viable microorganisms, the average value of g.c. was less than 1 g.c. and never changed. The intracellular presence of this bacteria was confirmed at 2 h.p.i. by immunofluorescence and immunohistochemistry. **Conclusion:** The results suggest that only *C. fetus* subsp. *fetus* viable can invade bovine endometrial epithelial cells but will not replicate in them, indicating that the endometrial cells do not represent a replication niche for this pathogen. Nonetheless, this invasion capability suggests that this type of cell could be employed by the pathogen to spread to other tissues.

Key words: Bovine endometrial cells, *Campylobacter fetus*, Intracellular survival

Introduction

Campylobacter fetus subsp. *fetus* is frequently isolated from the intestinal tract of asymptomatic cattle, goats, and sheep. In animals, *C. fetus* subsp. *fetus* exhibits a tropism for placental and reproductive tract tissues and is one of the major causes of both sporadic and epidemic septic abortions (Viejo *et al.*, 2001; Iraola *et al.*, 2012). The diseases produced by *C. fetus* subsp. *fetus* generates considerable economic losses, representing a significant problem in animal production (Michi *et al.*, 2016; Iraola *et al.*, 2017). *Campylobacter fetus* is a microaerophilic Gram-negative spiral-shaped bacterium that resides in the epithelial crypts of the bovine prepuce, and is transmitted to the cow during service or artificial insemination with contaminated semen (Mshelia *et al.*, 2010; Gard, 2016; Michi *et al.*, 2016). *Campylobacter fetus* subsp. *fetus* can attach in an irreversible way to bull spermatozoa and affect sperm quality (Cagnoli *et al.*, 2020).

Even though *C. fetus* is an animal health problem, its

pathogenicity mechanisms are unknown. Considering the pathogenesis of *Campylobacter* sp. infections, this microorganism must have mechanisms involved in the colonization or invasion of tissues. Virulence factors such as adhesions, secretion systems, and anti-phagocytic layers have been identified in the genome of *C. fetus* (Kienesberger *et al.*, 2014; Kaakoush *et al.*, 2015). Nonetheless, it is still necessary to describe the pathogenesis mechanisms associated with cell infection in animal tissues.

During an infection of a heifer's reproductive system, the endometrial epithelial cells are the first kind of cells that might interact with *C. fetus*. Some authors had demonstrated that *C. fetus* is able to adhere and invade many human epithelial cell lines like Hep-2 (Konkel and Joens, 1989), INT407 (Graham, 2003), Caco-2 (Baker and Graham, 2010), and HT-29/B6 (Bücker *et al.*, 2017). Endometrial epithelial cells could play an important role in *C. fetus* infections because they act as a physical and immunological barrier in heifer reproductive organs during this process (Agostinis *et al.*, 2019). In this study,

the capability of *C. fetus* subsp. *fetus* to invade and survive in bovine endometrial epithelial cells was evaluated using quantitative polymerase chain reaction (qPCR) and microscopy, to establish basic aspects of BGV pathogenesis.

Materials and Methods

Strains and bacteria culture conditions

Campylobacter fetus subsp. *fetus* ATCC 27374 (Oliveira *et al.*, 2016) was grown under a microaerophilic atmosphere (85% N₂, 10% CO₂, and 5% O₂, CampyGen, Oxoid) on selective *Campylobacter* agar supplemented with 5% sheep blood at 37°C for 96 h. To evaluate if the bacterial invasion was dependent on cell viability, *C. fetus* subsp. *fetus* was inactivated by heat treatment at 56°C for 90 min (*C. fetus* subsp. *fetus* heat-inactivated). *Salmonella enterica* subsp. *enterica* serovar Typhimurium ATCC 14028 was used as a positive control in invasion assays, considering its capability to invade different types of epithelial cells (Hall and Jones, 1977; Brumell *et al.*, 1999, Pauksztó *et al.*, 2020). *Salmonella typhimurium* was grown on Luria-Bertani (LB) agar and subcultivated in a hyperosmolar LB broth for 24 h at 37°C.

Primary bovine endometrial epithelial cell culture

Approximately 5 cm² of uterus tissue was obtained from three slaughtered cows from a slaughterhouse. The tissue was washed three times with Hank's solution supplemented with gentamicin (1.6 mg/ml) and transported to the laboratory in the same solution on ice (~ 6°C). The tissue was cut into pieces (approximately 3 mm²) and washed with phosphate-buffered saline (PBS) pH = 7.2 (1.9 mM NaH₂PO₄, 8.1 mM Na₂HPO₄, 154 mM NaCl). Two grams of tissue fragments were partially disaggregated with 40 ml of digestion solution, Dulbecco's modified eagle medium (DMEM) supplemented with 1.13 mg/ml of collagenase type I, and 1 UI/ml DNase I) at 37°C for 1.5 h on stirring. After this time, the cell suspension was centrifuged at 1500 × g for 5 min, and 30 ml of supernatant was recovered and centrifuged at 3500 × g for 10 min. The cell pellet was washed three times with 5 ml of DMEM/PBS (2:1), filtered (40 µm diameter/pore) and transferred into 25 cm² cell culture flasks (Nunc, Thermo Fisher Scientific, USA) with 5 ml of DMEM-primary culture medium [50 mM hydroxyethyl piperazineethanesulfonic acid (HEPES), 5% vol/vol fetal bovine serum, 1% v/v antibiotic/antifungal solution (penicillin G 10,000 U, streptomycin 5,000 µg, and amphotericin B 12.5 µg per ml)]. Cells were incubated for 24 h at 37°C. On the next day, the medium was removed, the cells were washed with DMEM/PBS (2:1) three times and 5 ml of DMEM-primary culture medium was finally added. For fibroblast depuration, one-minute trypsinization was performed daily for three consecutive days (Kisselbach *et al.*, 2009).

Evaluation of *C. fetus* intracellular survival

Gentamicin protection assays were performed following a standard protocol (Elsinghorst, 1994). *Campylobacter fetus* subsp. *fetus* was grown on *Campylobacter* selective agar supplemented with 5% sheep blood at 37°C for 72 h under a microaerophilic atmosphere. Bacteria biomass was collected in PBS and diluted in minimum essential medium (MEM) to adjust a multiplicity of infection (MOI) 100:1. Endometrial cell monolayers (10,000 cells/well) were infected and centrifuged at 800 × g for 5 min to maximize cell-bacteria contact. Plates were incubated at 37°C for 2 h. Then, monolayers were washed twice with PBS and incubated with DMEM medium supplemented with 5% fetal bovine serum and 100 µg/ml gentamicin. At 0, 2, 4, 10, and 24 hours post-infection (h.p.i.), three wells were washed with PBS and intracellular bacteria were recuperated by the addition of 1 ml of 1% Triton X-100. The cell lysates were collected in microtubes and kept frozen until the intracellular microorganism quantification assays were done.

Gentamicin sensitivity evaluation in *C. fetus* subsp. *fetus*

Before evaluating bacterial intracellular survival by gentamicin protection assays, sensitivity to this antibiotic was determined using the disc diffusion method. Briefly, *C. fetus* subsp. *fetus* was grown in blood agar for 96 h at 37°C under a microaerophilic atmosphere. Bacteria were suspended at 2 × 10⁶ colony-forming unit/ml (CFU/ml), and 100 µl were plated on Mueller Hinton agar. Sterilized paper filter discs were set on an agar plate, and gentamicin was added to each disc in the following concentrations: 0, 25, 50, 100, 200, and 300 µg/ml. The plates were incubated under a microaerophilic atmosphere at 37°C for 72 h. The inhibition zones surrounding the discs were measured and compared with inhibition zones produced by ciprofloxacin (100 µg/ml) to determine antimicrobial sensitivity (Luangtongkum *et al.*, 2007).

DNA extraction from infected cells

Cell lysates recuperated from intracellular survival assays were centrifuged at 12,000 × g for 20 min at 4°C. The pellet was recovered and suspended in 500 µL of lysis solution (10 mM Tris-HCl, pH = 8, 25 mM ethylenediaminetetraacetic acid (EDTA), pH = 8, and 2% sodium lauryl sulfate). Then 50 µg of proteinase K was added and incubated at 56°C for an h. Later, 300 µL of phenol/chloroform (1:1) was added, the tube was homogenized and centrifuged at 10,000 × g for 2 min. The supernatant was recovered, and 50 µL of 3 M sodium acetate pH = 6.0 and 1 ml of 100% ethanol were added. Tubes were incubated at -20°C for 2 h and then centrifuged at 13,300 × g for 20 min at 4°C. The pellet was washed with 70% ethanol and suspended with 20 µL of TE (10 mM Tris, pH = 8, 1 mM EDTA, pH = 8). The obtained DNA was quantified by spectrophotometry at 260 nm (Bio-Rad® SmartSpec Plus Spectrophotometer, USA).

Intracellular microorganism quantification by qPCR

Specific primers designed for DNA sequences of *16s rRNA* and *invA* genes were used to quantify *C. fetus* subsp. *fetus* and *S. typhimurium*, respectively. Primer sequences for *C. fetus* were 5'-GAG ATC ACC AGG AAT ACC C-3' and 5'-CAC CTG TCT CAA CTT TCT AGC-3' and for *S. typhimurium* were 5'-GTG AAA TTA TCG CCA CGT TCG GGC AA-3' and 5'-TCA TCG CAC CGT CAA AGG AAC C-3'. For the qPCR assays, a commercial kit (Power SYBR Green Applied Biosystems) was used, following the manufacturer's protocol. Cycle conditions for *C. fetus* subsp. *fetus* amplification were as follow: initial denaturation of 95°C for 60 s, followed by 40 cycles of denaturation at 94°C for 60 s, annealing at 50°C for 60 s, and extension of 72°C for 60 s. For *S. typhimurium*, qPCR conditions included an initial denaturation of 95°C for 60 s, followed by 40 cycles of denaturation at 94°C for 30 s, annealing at 55°C for 30 s, and extension of 72°C for 30 s. Standard curves (1 ng, 100 pg, 10 pg, 1 pg, and 0.1 pg of chromosomal DNA from both microorganisms) were used for quantification.

Immunofluorescence and immunohistochemistry

Bovine endometrial epithelial cells were infected as previously described, washed with PBS and fixed with 2% of paraformaldehyde for 20 min at room temperature. For the detection of intracellular bacteria, cells were permeabilized with 0.1% of Triton X-100 for 10 min. For the immunofluorescence analysis, cells were incubated for 30 min at 37°C with 50 µg/ml of phalloidin-fluorescein isothiocyanate (FITC) diluted with 1% of dimethyl sulfoxide (DMSO), 1 mg/ml propidium iodide, Alexa Fluor 488 conjugate rabbit antibody anti-cytokeratin 18, rabbit anti-*C. fetus* antibodies and Alexa Fluor 594 conjugated goat antibody anti-rabbit (IgG). The samples were observed using an epifluorescence microscope (E800, Nikon, Japan). For the immunohistochemistry analysis, cells were incubated for 30 min at 37°C, with rabbit anti-*C. fetus* antibodies and horseradish peroxidase-conjugated goat antibodies anti-rabbit IgG. It was used as a staining solution with 0.05% of 3-amino-9-ethylcarbazole, 0.015% of H₂O₂ in 0.05 M of sodium acetate pH = 5.5. Second staining was applied to provide contrast (Diffquick Staining System, Millipore). The samples were observed using an optic microscope (Velab, Mex). To evaluate the intracellular presence of *C. fetus* subsp. *fetus* in both assays, an experimental control without permeabilization was included.

Statistical analysis

Six assays with three replicates for each treatment were performed. Each treatment was subjected to the Shapiro-Wilk test, and the difference in intracellular bacterial number in each treatment was analyzed through Student's t-test.

Results

Primary bovine endometrial epithelial cell culture was established until the second week of incubation. The cells in the monolayer showed a polygonal epithelial-like morphology (Fig. 1A). The cells remained viable until the seventh passage, while later sub-cultures showed abnormal morphology (rounded cells), and their proliferation rates decreased to 50% (Fig. 1B). For cell-type confirmation, cytokeratin 18 was visualized by immunofluorescence. The results showed the presence of this protein in more than 90% of the cells (Fig. 1C).

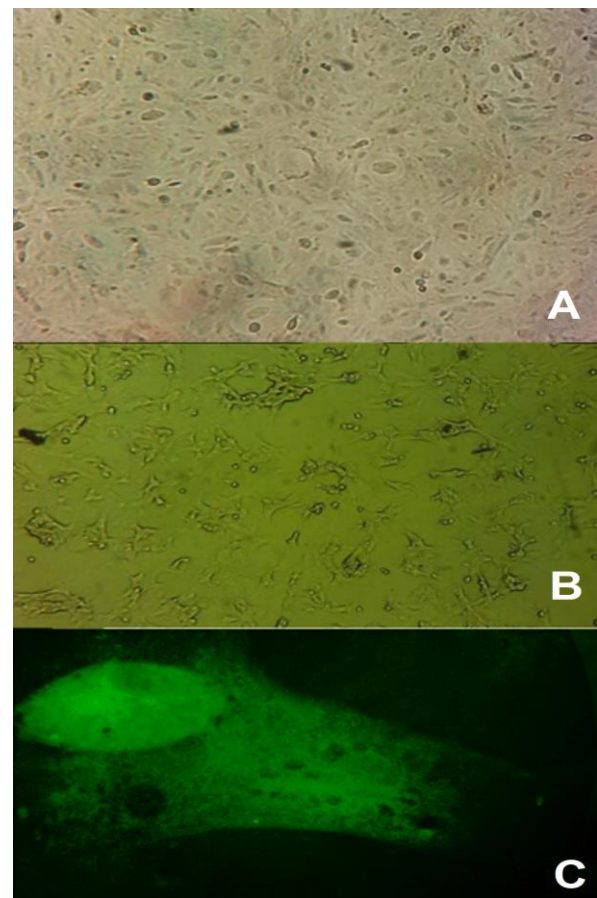


Fig. 1: Bovine endometrial epithelial cells cultures. (A) Normal appearance of epithelial-like cells after 7th passaging (×20), (B) Appearance of epithelial cells of bovine endometrium at 10th passaging (×20), and (C) Immunofluorescence assay of bovine endometrial cells stained with Alexa 488 (green) showed the presence of Cytokeratin 18 (×40)

Before intracellular survival evaluation assays, the sensibility of *C. fetus* subsp. *fetus* to gentamicin was determined. The results showed that *C. fetus* subsp. *fetus* was not able to grow around paper filter discs with 25 µg/ml of gentamicin. However, it was able to grow in DMEM without gentamicin (data not shown). The inhibition area observed with 25 µg/ml was similar to the one obtained with ciprofloxacin (~27 mm diameter). With higher concentrations of gentamicin, the inhibition was superior.

The results of intracellular survival assays with *C.*

fetus subsp. *fetus* viable (non-heat-inactivated) showed that in the first 4 h.p.i., the number of genomic copies (g.c.) remained almost the same. At 0 h.p.i., there was an average (~) of 633.85 g.c. per 10,000 cells in the well (g.c./cell-well), at 2 h.p.i. were ~640.2 g.c./cell-well, and at 4 h.p.i. were ~696 g.c./cel-well. Later, the number of g.c. decreased significantly. At 10 h.p.i., there were ~350.3 g.c./cell-well and at 24 h.p.i. there were ~282.0 g.c./cel-well (Fig. 2). At this point, it is important to mention that the cellular monolayer remained intact until the last time (data not shown). Infection with *C. fetus* subsp. *fetus* non-viable (heat-inactivated) showed only ~1 g.c. in all post-infection times (Fig. 2). This data suggests that *C. fetus* subsp. *fetus* can invade bovine endometrial epithelial cells but cannot grow inside them. It also indicates that invasion was only induced by viable microorganisms. In contrast, the number of g.c. obtained from cells infected with *S. typhimurium* slightly decreased in the first 2 h.p.i. At 0 h.p.i., there were ~3280.2 g.c./cell-well, which decreased to ~2690.0 g.c./cell-well at 2 h.p.i. Later, at 4, 10, and 24 h.p.i. the g.c. increased to ~7550, ~9590.7, and ~28400.2 g.c./cell-well, respectively. These results indicate that *S. typhimurium* can invade and replicate inside endometrial epithelial cells.

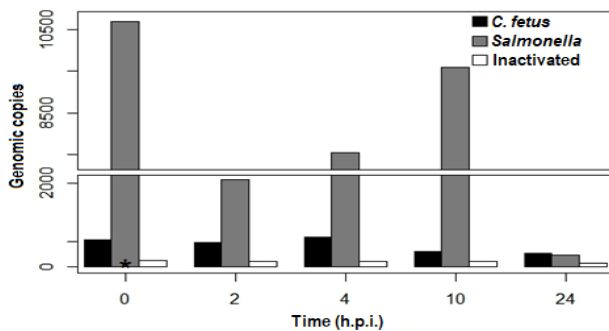


Fig. 2: Intracellular survival assays. The bovine endometrial epithelial cells were infected with *C. fetus* ATCC 27374, *S. typhimurium*, and *C. fetus* subsp. *fetus* non-viable (heat-inactivated). Intracellular bacteria were quantified by qPCR at 0, 2, 4, 10, and 24 h.p.i.

The presence of *C. fetus* subsp. *fetus* inside of epithelial cells was confirmed by immunohistochemistry (Fig. 3) and immunofluorescence (Fig. 4). The results of both assays at 2 h.p.i. revealed intracellular bacteria in permeabilized cells but not in the non-permeabilized cells. Considering that *C. fetus* subsp. *fetus* did not proliferate, its presence was not evaluated at a later time post-infection. These results demonstrate that *C. fetus* subsp. *fetus* can invade cells, confirming the results obtained in qPCR.

Discussion

Campylobacter fetus subsp. *fetus* produces sporadic infections in the bovine genital tract. However, until now, the virulence mechanisms have not been well described. In this work, the ability of *C. fetus* subsp. *fetus* to invade bovine endometrial epithelial cells was

demonstrated. In previous studies, invasion of *Campylobacter* spp. in epithelial cells was proved in which only immortalized cellular lines were used (Konkel and Joens, 1989; Graham, 2003; Watson and Galán, 2008; Baker and Graham, 2010; Bucker *et al.*, 2017). In this study, primary cell cultures were used to avoid possible alteration in the phenomena (Alge *et al.*, 2006). Our results showed the ability of *C. fetus* subsp. *fetus* to invade bovine endometrial epithelial cells, but not to survive inside them. This could suggest that these cells do not represent a replicative niche. However, some aspects are necessary to resolve, like the role of a hormonal environment (Wang *et al.*, 2010).

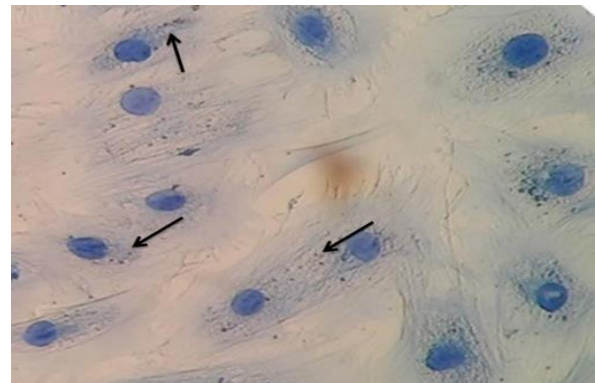


Fig. 3: Immunohistochemistry of intracellular *C. fetus* ATCC 27374 in bovine endometrial epithelial cells (×40). The microorganisms observed inside the cell are in brown and the cells are in blue color. The black arrows show the intracellular bacteria

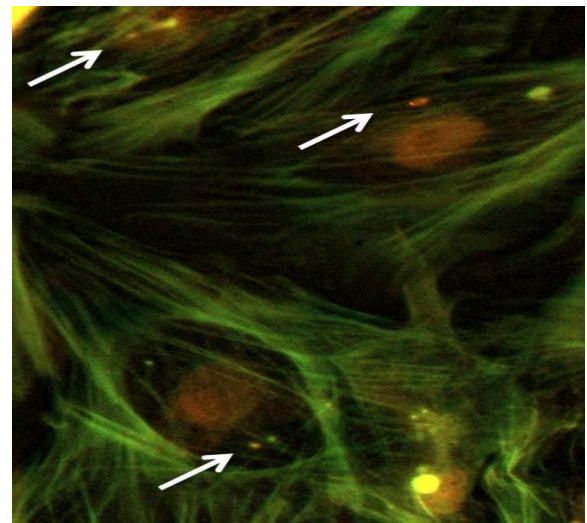


Fig. 4: Immunofluorescence of intracellular *C. fetus* in bovine endometrial epithelial cells. The cytoskeleton was stained with phalloidin-FITC (green), nucleus with propidium iodide, and intracellular microorganisms with Alexa 594 (red). The white arrow shows *C. fetus* inside the cells

The comparison between the results of the viable and nonviable (heat-inactivated) *C. fetus* subsp. *fetus*, showed that the ability to invade endometrial cells is an active bacterial process rather than a cellular one since this bacterium cannot invade the epithelial cells. In several

intracellular microorganisms, this process involves the expression of many genes to achieve the intracellular niche, or in the case of *Campylobacter jejuni*, translocation through the epithelial cells (Dersch, 2003; Baker and Graham, 2010).

In the present work, the intracellular presence of *C. fetus* subsp. *fetus* was demonstrated by qPCR. This technique was previously used to quantify fastidious microorganisms (Blakes *et al.*, 2015; Ricchi *et al.*, 2017). The data obtained by qPCR was confirmed by immunofluorescence and immunohistochemistry, suggesting that this pathogen possesses mechanisms that enable the invasion of the cells. In other studies, qPCR has been used for evaluating intracellular proliferation, especially for viable but nonculturable microorganisms which are difficult to grow in the laboratory (González-Escalona *et al.*, 2006; Wattanaphansak *et al.*, 2010; Blakes *et al.*, 2015). In this regard, research performed with T84 cells revealed that the intracellular survival capability of *C. jejuni* could not be established since culture is complicated after the infection. In this study, a qPCR was used to evaluate bacterial proliferation (Watson and Galán, 2008).

In intracellular survival assays, the genomic copy number analysis showed that the number of intracellular bacteria remains constant until 4 h.p.i., and then decreases to 24 h. These suggest that *C. fetus* subsp. *fetus* cannot evade bactericidal mechanisms of the cell and that bacterial and DNA degradation starts at 4 h.p.i. However, the absence of proliferation inside the cells could be due to another mechanism, such as the lack of metabolism needed for survival inside the cells. Although this is a hypothesis, more analysis is required to prove it. These results agree with the ones obtained previously with INT407 cell infections (Graham, 2003). In these assays, viable microorganisms were obtained only until 4 h.p.i. It was also observed that *C. fetus* subsp. *fetus* was less invasive than *S. typhimurium* (used as a positive control of infection). This microorganism was able to replicate inside this cell type. This result can be normal, considering that the type III secretion system gives bacteria the ability to invade and multiply in many types of cells (Yoon *et al.*, 2011; Boumart *et al.*, 2014).

The type of cell used in this study showed the typical morphology of endometrial epithelial cells, described as cuboid shape cells that form a cobblestone-like structure in monolayers (Eritja *et al.*, 2010). In this work, the cells maintained their morphology and viability until the seventh passage. Other authors indicated that cell viability can be preserved until 40 passes by using growth promoters (Feng *et al.*, 2012). However, a free hormone cell culture media was used in our experiment to avoid interference with bactericidal mechanisms of endometrial cells. For cell-type confirmation, cytokeratin 18 protein was detected by immunofluorescence. This protein has been previously described in other studies, where primary endometrial epithelial cells were established as models for hormonal effect analyses (Eritja *et al.*, 2010; Feng *et al.*, 2012; Haeger *et al.*, 2015). In this work, more than 90% of the cells showed

the presence of cytokeratin 18. These results confirm that this primary cell culture agrees with bovine endometrial epithelial cells and can be used to evaluate intracellular survival. On the other hand, the absence of fibroblast-like cells demonstrated that the trypsinization process was useful to eliminate this cell-type as previously described (Kisselbach *et al.*, 2009).

Other studies have shown the translocation capability of *C. jejuni* where the cell monolayer always keeps its integrity (Baker and Graham, 2010; Day *et al.*, 2010). In this work, the monolayer of endometrial cells remained without perceptible changes; thus, *C. fetus* subsp. *fetus* might have the same translocation ability as *C. jejuni* since the bovine endometrial epithelial cells are not the proliferative niche for this microorganism. This mechanism of translocation could represent to *C. fetus* the possibility to access other cell types, such as stromal cells or macrophages, where the pathogen might proliferate (Louwen *et al.*, 2012).

Future investigations in *C. fetus* subsp. *fetus* pathogenicity mechanisms may shed light on the translocation ability of this pathogen and help identify the replication niche, understand the pathogenesis of campylobacteriosis and develop new strategies for prevention and treatment. In conclusion, *C. fetus* subsp. *fetus* can invade bovine endometrial epithelial cells but cannot survive inside them. This suggests the existence of other proliferative niches for this pathogen and establishes the possibility that endometrial cells are only used by this pathogen to reach submucosa tissue and induce uterine inflammations associated with abortions.

Acknowledgement

This research was supported by Universidad Autónoma Metropolitana, Unidad Xochimilco; Project "Molecular pathogenesis of bacterial infections."

Conflict of interest

The authors declare that they have no conflict of interest.

References

- Agostinis, C; Mangogna, A; Bossi, F; Ricci, G and Kishore, U (2019). Uterine immunity and microbiota: A shifting paradigm. *Front Immunol.*, 10: 1-11.
- Alge, CS; Hauck, SM; Priglinger, SG; Kampik, A and Ueffing, M (2006). Differential protein profiling of primary versus immortalized human RPE cells identifies expression patterns associated with cytoskeletal remodeling and cell survival. *J. Proteome Res.*, 5: 862-878.
- Baker, NT and Graham, LL (2010). *Campylobacter fetus* translocation across Caco-2 cell monolayers. *Microb. Pathog.*, 49: 260-272.
- Blakes, A; Day, NPJ; Atwal, S; Giengkam, S; Blacksell, SD and Paris, DH (2015). Improved quantification, propagation, purification, and storage of the obligate intracellular human pathogen *Orientia tsutsugamushi*. *PLoS Negl. Trop. Dis.*, 9: 1-20.

- Boumart, Z; Velge, P and Wiedemann, A** (2014). Multiple invasion mechanisms and different intracellular behaviors: a new vision of *Salmonella*-host cell interaction. *FEMS Microbiol. Lett.*, 361: 1-7.
- Brumell, JH; Steele-Mortimer, O and Finlay, BB** (1999). Bacterial invasion: force feeding by *Salmonella*. *Curr. Biol.*, 9: 277-280.
- Bücker, R; Krug, SM; Fromm, A; Nielsen, HL; Fromm, M and Nielsen, H** (2017). *Campylobacter fetus* impairs barrier function in HT-29/B6 cells through focal tight junction alterations and leaks. *Ann. N. Y. Acad. Sci.*, 1405: 189-201.
- Cagnoli, CI; Chiapparrone, ML; Cacciato, CS; Rodríguez, MG; Aller, JF and Catena, MDC** (2020). Effects of *Campylobacter fetus* on bull sperm quality. *Microb. Pathog.*, 149: 1-5.
- Day, AS; Nahidi, L; Kaakoush, NO; Mitchell, HM; Zhang, L and Leach, ST** (2010). Host Attachment, invasion, and stimulation of proinflammatory cytokines by *Campylobacter concisus* and other non-*Campylobacter jejuni* *Campylobacter* species. *J. Infect. Dis.*, 202: 1855-1865.
- Dersch, P** (2003). Molecular and cellular mechanisms of bacterial entry into host cells. In: Herwald, H (Ed.), *Host response mechanisms in infectious diseases*. (1st Edn.), Karger, Switzerland. PP: 183-209.
- Elsinghorst, EA** (1994). Measurement of invasion by gentamicin resistance. *Methods Enzymol.*, 236: 405-420.
- Eritja, N; Lobet, D; Domingo, M; Santacana, M; Yeramian, A and Matias-Guiu, X** (2010). A novel three-dimensional culture system of polarized epithelial cells to study endometrial carcinogenesis. *Am. J. Pathol.*, 176: 2722-2731.
- Feng, X; Cao, Y; Liu, Z; Fu, Y; Liu, B and Li, D** (2012). Lipopolysaccharide increases Toll-like receptor 4 and downstream Toll-like receptor signaling molecules expression in bovine endometrial epithelial cells. *Vet. Immunol. Immunopathol.* 151: 20-27.
- Gard, J** (2016). Bovine genital campylobacteriosis-A review. *Int. J. Vet. Sci. Res.*, 2: 29-31.
- Graham, LL** (2003). *Campylobacter fetus* adheres to and enters INT 407 cells. *Can. J. Microbiol.*, 48: 995-1007.
- González-Escalona, N; Fey, A; Höfle, MG; Espejo, RT and Guzmán, CA** (2006). Quantitative reverse transcription polymerase chain reaction analysis of *Vibrio cholerae* cells entering the viable but non-culturable state and starvation in response to cold shock. *Environ. Microbiol.*, 8: 658-666.
- Haeger, JD; Hambruch, N; Dantzer, V; Hoelker, M; Schellander, K and Klisch, K** (2015). Changes in endometrial ezrin and cytokeratin 18 expression during bovine implantation and in caruncular endometrial spheroids *in vitro*. *Placenta*. 36: 821-831.
- Hall, GA and Jones, PW** (1977). A study of the pathogenesis of experimental *Salmonella* dublin abortion in cattle. *J. Comp. Pathol.*, 87: 53-65.
- Iraola, G; Forster, SC; Kumar, N; Lehours, P; Bekal, S and García-Peña, FJ** (2017). Distinct *Campylobacter fetus* lineages adapted as livestock pathogens and human pathogens in the intestinal microbiota. *Nat. Commun.*, 8: 1367-1370.
- Iraola, G; Hernández, M; Calleros, L; Paolicchi, F; Silveyra, S; Velilla, A; Carretto, L; Rodríguez, E and Pérez, R** (2012). Application of a multiplex PCR assay for *Campylobacter fetus* detection and subspecies differentiation in uncultured samples of aborted bovine fetuses. *J. Vet. Sci.*, 13: 371-376.
- Kaakoush, NO; Castaño-Rodríguez, N; Mitchell, HM and Man, SM** (2015). Global epidemiology of *Campylobacter* infection. *Clin. Microbiol. Rev.*, 28: 687-720.
- Kienesberger, S; Sprenger, H; Wolfgruber, S; Halwachs, B and Thallinger, GG** (2014). Comparative genome analysis of *Campylobacter fetus* subspecies revealed horizontally acquired genetic elements important for virulence and niche specificity. *PLOS One*. 9: 1-13.
- Kisselbach, L; Merges, M; Bossie, A and Boyd, A** (2009). CD90 expression on human primary cells and elimination of contaminating fibroblasts from cell cultures. *Cytotechnology*. 59: 31-44.
- Konkel, ME and Joens, LA** (1989). Adhesion to and invasion of HEp-2 cells by *Campylobacter* spp. *Infect. Immun.*, 57: 2984-2990.
- Louwen, R; Nieuwenhuis, EES; van Marrewijk, L; Horst-Kreft, D and de Ruiter, L** (2012). *Campylobacter jejuni* translocation across intestinal epithelial cells is facilitated by ganglioside-like lipooligosaccharide structures. *Infect. Immun.*, 80: 3307-3318.
- Luangtongkum, T; Morishita, TY; El-Tayeb, AB; Ison, AJ and Zhang, Q** (2007). Comparison of antimicrobial susceptibility testing of *Campylobacter* spp. by the agar dilution and the agar disk diffusion methods. *J. Clin. Microbiol.*, 45: 590-594.
- Michi, AN; Favetto, PH; Kastelic, J and Cobo, ER** (2016). A review of sexually transmitted bovine trichomoniasis and campylobacteriosis affecting cattle reproductive health. *Theriogenology*. 85: 781-791.
- Mshelia, GD; Amin, JD; Woldehiwet, Z; Murray, RD and Egwu, GO** (2010). Epidemiology of bovine venereal campylobacteriosis: geographic distribution and recent advances in molecular diagnostic techniques. *Reprod. Domest. Anim.*, 45: 221-230.
- Oliveira, LM; Resende, DM; Dorneles, EM; Horácio, EC; Alves, FL; Gonçalves, LO; Tavares, GS; Styne, AP; Lage, AP and Ruiz, JC** (2016). Complete genome sequence of type strain *Campylobacter fetus* subsp. *fetus* ATCC 27374. *Genome Announc.*, 4: e01344-16.
- Pauksztó, L; Mikolajczyk, A; Jastrzebski, JP; Majewska, M; Dobrzyn, K; Kiezun, M; Smolinska, N and Kaminski, T** (2020). Transcriptome, spliceosome and editome expression patterns of the porcine endometrium in response to a single subclinical dose of *Salmonella* Enteritidis lipopolysaccharide. *Int. J. Mol. Sci.*, 2: 1-25.
- Ricchi, M; Bertasio, C; Boniotti, MB; Vicari, N; Russo, S and Tilola, M** (2017). Comparison among the quantification of bacterial pathogens by qPCR, dPCR, and cultural methods. *Front Microbiol.*, 8: 1-15.
- Viejo, G; Gomez, B; De Miguel, D; Del Valle, A; Otero, L and De La Iglesia, P** (2001). *Campylobacter fetus* subspecies *fetus* bacteremia associated with chorioamnionitis and intact fetal membranes. *Scand. J. Infect. Dis.*, 33: 126-127.
- Wang, HB; Lü, SH; Lin, QX; Feng, LX; Li, DX and Duan, CM** (2010). Reconstruction of endometrium *in vitro* via rabbit uterine endometrial cells expanded by sex steroid. *Fertil. Steril.*, 93: 2385-2395.
- Watson, RO and Galán, JE** (2008). *Campylobacter jejuni* survives within epithelial cells by avoiding delivery to lysosomes. *PLOS Pathog.*, 4: 1-15.
- Wattanaphansak, S; Gebhart, CJ; Anderson, JM and Singer, RS** (2010). Development of a polymerase chain reaction assay for quantification of *Lawsonia intracellularis*. *J. Vet. Diagn. Invest.*, 22: 598-602.
- Yoon, H; Gros, P and Heffron, F** (2011). Quantitative PCR-based competitive index for high-throughput screening of *Salmonella* virulence factors. *Infect. Immun.*, 79: 360-368.