



Since January 2020 Elsevier has created a COVID-19 resource centre with free information in English and Mandarin on the novel coronavirus COVID-19. The COVID-19 resource centre is hosted on Elsevier Connect, the company's public news and information website.

Elsevier hereby grants permission to make all its COVID-19-related research that is available on the COVID-19 resource centre - including this research content - immediately available in PubMed Central and other publicly funded repositories, such as the WHO COVID database with rights for unrestricted research re-use and analyses in any form or by any means with acknowledgement of the original source. These permissions are granted for free by Elsevier for as long as the COVID-19 resource centre remains active.



Original Research

Outcomes of SARS-CoV-2 infection in patients with pulmonary sarcoidosis: A multicenter retrospective research network study

Yousaf B. Hadi^{a,1}, Dhairya A. Lakhani^{b,1}, Syeda F.Z. Naqvi^c, Shailendra Singh^a, Justin T. Kupec^{a,*}

^a Department of Internal Medicine, Department of Medicine, West Virginia University, Morgantown, WV, USA

^b Department of Radiology, Department of Medicine, West Virginia University, Morgantown, WV, USA

^c Section of Pulmonary and Critical Care Medicine, Department of Medicine, West Virginia University, Morgantown, WV, USA



ARTICLE INFO

Keywords:

Coronavirus
COVID-19
Interstitial lung disease
Sarcoidosis
SARS-CoV-2

ABSTRACT

Background: Analyses of COVID-19 infection outcomes in patients with preexisting pulmonary sarcoidosis are lacking and are limited to case reports or small case series with the largest study reporting outcomes of 37 patients.

Research question: Retrospective cohort study to assess clinical outcomes of 945 patients with pulmonary sarcoidosis, presenting with COVID 19, compared to a propensity matched cohort of patients without sarcoidosis.

Study design and methods: Analysis of a multi-center research network TriNETX was performed including patients more than 16 years of age diagnosed with COVID-19. Outcomes in COVID-19 positive patients with concurrent pulmonary sarcoidosis were compared with a propensity score matched cohort of patients without pulmonary sarcoidosis.

Results: A total of 278,271 patients with COVID-19 on the research network were identified, 954 patients (0.34 %) carried a diagnosis of pulmonary sarcoidosis. Mean age of patients with sarcoidosis was 56.3 ± 13.2 years, with female predominance ($n = 619, 64.89\%$). 49.69 % of the participants were African American ($n = 474$). Comorbidities including hypertension, chronic lower respiratory diseases, diabetes mellitus, ischemic heart disease, nicotine dependence, and chronic kidney disease were more common in patients with pulmonary sarcoidosis when compared to the non-pulmonary sarcoidosis cohort (all p values < 0.01). In unmatched analysis, pulmonary sarcoidosis group had higher mortality, increased risk for hospitalization, intubation and need for renal replacement therapy. After propensity score matching, no difference in any of the outcome measures was observed.

Interpretation: Crude COVID-19 mortality and other clinical outcome measures are poor in pulmonary sarcoidosis cohort; however, propensity-matched analyses revealed no difference in outcomes, showing that higher mortality is driven by higher burden of comorbidities.

1. Background

Coronavirus disease 2019 (COVID-19) caused by severe acute respiratory syndrome coronavirus 2 (SARS-CoV-2) mainly affects the lung parenchyma. Sarcoidosis is an autoinflammatory disease characterized by diffuse granulomatous inflammation in the lungs and other organs [1]. For patients with pulmonary or autoimmune disorders, and those on

immune modulating therapies, COVID-19 pandemic represents a therapeutic challenge as the outcome of SARS-CoV-2 infection in these populations continue to be understudied [2].

Analyses of SARS-CoV-2 infection outcomes in patients with preexisting interstitial lung disease (ILD) or pulmonary sarcoidosis is lacking but registries are ongoing. Data on COVID-19 disease in patients with sarcoidosis are currently limited to case reports or small case series with

Abbreviations: BMI, Body Mass Index; COVID-19, Coronavirus disease 2019; ICD-10-CM, International Classification of Diseases, Ninth Revision and tenth Revision, Clinical Modification; SARS-CoV-2, Severe acute respiratory syndrome coronavirus 2; HCOs, Health Care Organizations; EHRs, Electronic health record management systems.

* Corresponding author. Department of Medicine, 1 Medical Center Drive, Morgantown, WV, 26506, USA.

E-mail address: jkupec@hsc.wvu.edu (J.T. Kupec).

¹ Denotes equal contribution.

<https://doi.org/10.1016/j.rmed.2021.106538>

Received 4 February 2021; Received in revised form 17 June 2021; Accepted 29 June 2021

Available online 22 July 2021

0954-6111/© 2021 Elsevier Ltd. All rights reserved.

the largest study reporting outcomes of 37 patients [3]. It is previously known that patients with concomitant pulmonary disease have worse outcomes [2,4]. Therefore, infected patients with any underlying chronic lung disease, especially with pulmonary fibrosis and sarcoidosis, would be theoretically at higher risk of severe complications. Some preliminary data also suggest that patients with sarcoidosis are at risk of severe complications [4], however, the small numbers of included patients do not allow for comparisons with patients without sarcoidosis.

Here, we studied the clinical outcomes of 945 patients with pulmonary sarcoidosis presenting with COVID 19 and compared them with a propensity matched cohort of patients without pulmonary sarcoidosis.

2. Study Design and Methods

2.1. Description of data source

A retrospective cohort study was conducted using the multi-institutional research network TriNETX (Cambridge, MA, USA) platform. This platform is a federated research network of more than 40 Health Care Organizations (HCOs) in the United States of America. TriNETX provides real time access to the healthcare records of patients from included healthcare organizations with database of more than 40 million patients, that are de-identified and retrieved directly from the electronic health record management systems (EHRs) of participating organizations. Participating organizations are generally large academic centers that operate both tertiary care and satellite secondary or primary office locations.

Clinical variables (referred as facts) are retrieved both directly from EHRs, as well as through processing clinical documents through a built-in Natural Language Processing system. Quality assurance is achieved at the time of data extraction from EHRs before inclusion in the federated network's database in a systemic, standardized format. Only aggregate counts and statistical summaries are provided by the interface, and no protected health information is released by maintaining de-identification of subjects at all levels of data retrieval and dissemination.

Western IRB has granted a waiver to TriNETX as it only provides de-identified data. At our institution, West Virginia University Clinical and Translational Science Institute (WVCTSI) manages the TriNETX platform and provides access to end-users. TriNETX obfuscates patient counts less than 10 to ensure anonymity.

2.2. Study participants

We conducted a real time search on the TriNETX platform and updated through January 06, 2021. All patients with COVID 19 on this platform who were more than 16 years of age at diagnosis were identified and included. Patients were included if they received a positive SARS-CoV-2 test or COVID-19 diagnosis between January 20, 2020, and October 30, 2020. January 20, 2020 was chosen as it was the date of diagnosis of the first case of COVID-19 in the USA. October 30, 2020 was chosen so that all included patients had 60 days of follow up available, as the primary study endpoint was a composite outcome at 60 days from diagnosis.

We based the selection and identification criteria on diagnostic codes and positive laboratory confirmation using standard terminology recommended by the Centers for Disease Control and Prevention and purposed by TriNETX platform, which is detailed in the e-Appendix-1. Patients with COVID-19 identified through this terminology were categorized in groups based on previous diagnosis of pulmonary sarcoidosis. Patients with pulmonary sarcoidosis were identified using the International Classification of Diseases, Ninth Revision and tenth Revision, Clinical Modification (ICD-10-CM) code D86.0.

2.3. Study outcomes

Clinical and laboratory outcomes were then compared between

patients with and without a diagnosis of pulmonary sarcoidosis. Primary study outcome was a composite of death or need of mechanical ventilation in the 30-day and 60-day period from index event. Index event was defined as either the time of COVID-19 diagnosis or first COVID-19 positive test result date, whichever occurred first. Secondary study outcomes included mortality, hospitalization, and need for mechanical ventilation in the 30-day period from COVID-19 diagnosis and mortality in 60 days after diagnosis. Laboratory outcomes were considered up to 7 days from COVID-19 diagnosis.

2.4. Statistical analysis

All statistical analyses were conducted utilizing TriNETX platform in real-time. Cohort characteristics were described using mean, standard deviation and proportions whenever appropriate. For univariate analysis, chi square test and independent sample T tests employed for categorical and continuous data respectively, as appropriate. Subsequently, the TriNETX platform was used for propensity score matching of the two study cohorts. 1:1 propensity score matching was conducted using race, age, diabetes, hypertension, chronic lung diseases, nicotine dependence, heart failure, ischemic heart disease, body mass index (BMI), chronic kidney disease and gender in order to match a control group of patients without sarcoidosis. The platform utilizes the input matrices of the identified and above-mentioned covariates to conduct logistic regression analysis that generates and assigns propensity scores to subjects. One-to-one matching was then performed based on the propensity scores thus generated using greedy nearest neighbor algorithms with a caliper width of 0.1 pooled standard deviations.

In order to eliminate bias resulting from nearest neighbor algorithms, the orders of rows are randomized.

We defined a two-sided alpha of less than 0.05 a priori for statistical significance. We assessed the balance on covariates in the propensity score matched cohorts using standardized mean difference, and absolute values > 0.1 were considered reflective of residual imbalance in the two groups. For comparison between cohorts, risk ratios with 95 % confidence intervals were calculated.

3. Results

3.1. Study population

Using our inclusion criteria, we identified a total of 278,271 patients with COVID-19 on the research network. Of these identified patients, 954 patients (0.34 %) carried a diagnosis of pulmonary sarcoidosis, while the rest 277,317 patients (99.66 %) were included in the non-pulmonary sarcoidosis cohort. Mean age at the time of COVID-19 diagnosis in patients with pulmonary sarcoidosis was 56.3 ± 13.2 years, with female predominance ($n = 619, 64.89\%$) and 49.69% ($n = 474$) were African American. Co-morbidities including hypertension, chronic lower respiratory diseases, diabetes mellitus, ischemic heart disease, nicotine dependence, and chronic kidney disease were more common in patients with pulmonary sarcoidosis when compared to the non-pulmonary sarcoidosis cohort (all p values < 0.01). Baseline demographic characteristics and comorbid conditions are described in Table 1. Further, no patients with pulmonary sarcoidosis were lost in 1:1 propensity score matching analysis (Table 1).

Of the patients with pulmonary sarcoidosis, 544 patients (57 %) were prescribed glucocorticoids in the 6 months before index event, and 617 (65 %) were using bronchodilator medications. Methotrexate was used by 57 patients (6 %). Geographic distribution of the participants with sarcoidosis is as follows: Southern USA ($n = 485, 51\%$), Mid-west USA ($n = 197, 21\%$), Northern USA ($n = 191, 20\%$), Western USA ($n = 70, 7\%$), and other/unknown location ($n = 11, <1\%$).

Table 1
Baseline demographic and clinical characteristics of COVID-19 patients with and without pulmonary sarcoidosis before and after propensity score matching.

Variable	Before propensity matching				p-value/ SDiff	After propensity matching				
	Sarcoidosis cohort (n = 954)		Non-sarcoidosis cohort (n = 277317)			Sarcoidosis cohort (n = 954)		Non-sarcoidosis cohort (n = 954)		
	Number/ Mean	Percent/ SD	Number	Percent/ SD		Number/ Mean	Percent/ SD	Number	Percent/ SD	
Demographics										
Age (Mean)	56.3	13.2	45.8	19	<0.001/ 0.64	56.3	13.2	57.4	14.9	0.11/0.07
Male	333	34.91	123793	44.64	<0.001/ 0.20	333	34.91	322	33.75	0.59/0.02
Female	619	64.89	152513	54.99	<0.001/ 0.20	619	64.89	632	6.25	0.53/0.03
BMI (30 and above)	310	32.50	41049	14.80	<0.001/ 0.42	310	32.50	315	33.02	0.81/0.01
Black or African American	474	49.69	53122	19.16	<0.001/ 0.68	474	49.68	475	49.79	0.96/0.002
White	410	42.98	157160	56.67	<0.001/ 0.28	410	42.98	405	42.45	0.82/0.01
Hispanic or Latino	58	6.08	44958	16.21	<0.001/ 0.32	58	6.08	66	6.91	0.45/0.03
Comorbidities										
Hypertension	639	66.98	72443	26.12	<0.001/ 0.89	639	66.98	650	68.13	0.59/0.02
Chronic lower respiratory diseases	467	48.95	39927	14.39	<0.001/0.8	467	48.95	466	48.85	0.96/0.002
Diabetes mellitus	368	38.57	37447	13.50	<0.001/ 0.59	368	38.57	348	36.48	0.34/0.04
Ischemic heart disease	261	27.35	21228	7.66	<0.001/ 0.54	261	27.36	252	26.42	0.64/0.02
Nicotine dependence	135	14.15	17943	6.47	<0.001/ 0.25	135	14.15	130	13.63	0.74/0.02
Chronic kidney disease	184	19.28	16125	5.82	<0.001/ 0.42	184	19.29	170	17.82	0.41/0.04

Table Legend: Abbreviation: BMI: Body Mass Index; SDiff: Standard Difference; SD: Standard Deviation.

3.2. Clinical outcomes

All the covariates used for matching in the two groups were similar after propensity score matching (mean standard difference < 0.1) and are illustrated in Table 1. In the 30 and 60-day period post COVID-19 diagnosis, 33 (3.46 %) and 41 (4.30 %) deaths were reported in the sarcoidosis group, respectively. The composite outcome (death or mechanical ventilation) was reached by 58 (6.08 %) and 62 (6.50 %) patients in the pulmonary sarcoidosis group at 30 and 60 day follow up respectively (Fig. 1, Table 2). In the crude, unmatched analysis, mortality and composite endpoint at 30 days was higher in the pulmonary

sarcoidosis group (RR 1.92, 95%CI 1.37–2.68) and (RR 2.04, 95%CI 1.59–2.61) respectively. Similar trends were observed for mortality and composite endpoint at 60 days, as well as need for hospitalization, critical care need, acute kidney injury, and requirement for renal replacement therapy (Table 2). However no statistically significant difference was observed following propensity matching, for mortality, composite endpoint, acute kidney injury, requirement for renal replacement therapy, inpatient admission and critical care need in the two groups, as illustrated in Table 2.

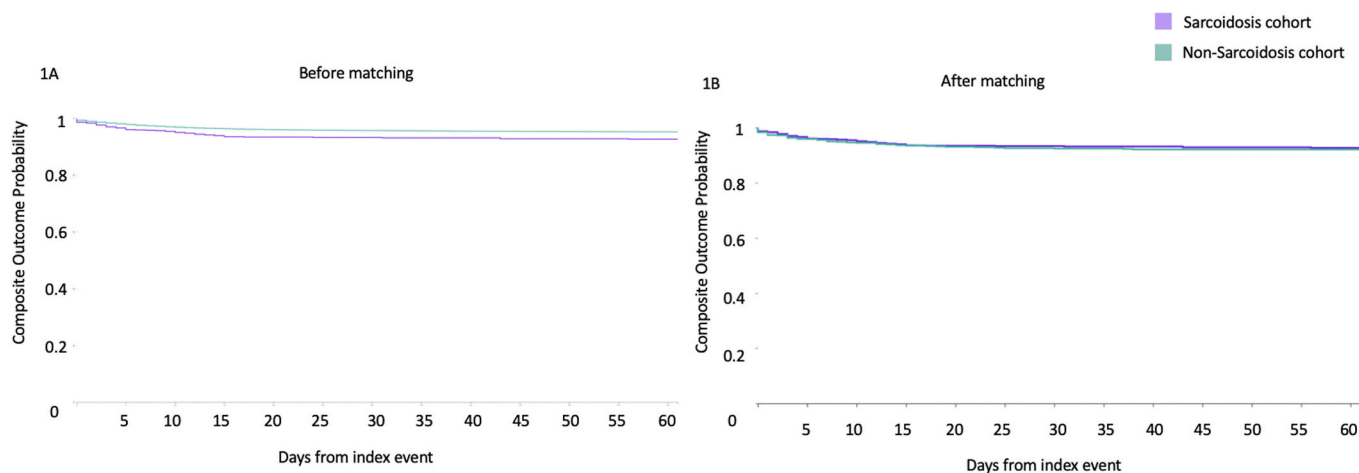


Fig. 1. Kaplan Meier plots of composite endpoint (mortality and mechanical ventilation combined) in SARS-CoV-2 infected patients with pulmonary sarcoidosis (purple) and without pulmonary sarcoidosis (green), before (Fig. 1A) and after propensity matching (Fig. 1B). (For interpretation of the references to colour in this figure legend, the reader is referred to the Web version of this article.)

Table 2
Outcomes in COVID-19 patients with and without pulmonary sarcoidosis before and after propensity score matching.

Outcome	Sarcoidosis group (n = 954)	Percentage	Non-Sarcoidosis group (n = 277317)	Percentage	Risk Ratio	95% CI Lower	95% CI Upper
Before propensity score matching							
Mortality within 30 days	33	3.46	5004	1.80	1.92	1.37	2.68
Mortality within 60 days	41	4.30	5704	2.06	2.09	1.55	2.82
Inpatient services	185	19.40	24563	8.86	2.19	1.92	2.49
Critical Care	66	6.92	8455	3.05	2.27	1.80	2.87
Mechanical ventilation	42	4.40	5366	1.94	2.28	1.69	3.06
30-day composite outcome	58	6.08	8282	2.99	2.04	1.59	2.61
60-day composite outcome	62	6.50	8746	3.15	2.06	1.62	2.62
Acute Kidney Injury	97	10.17	10956	3.95	2.57	2.13	3.11
Renal replacement therapy	18	1.89	1192	0.43	4.39	2.77	6.96
Outcome	Sarcoidosis group (n = 954)	Percentage	Non-Sarcoidosis group (n = 954)	Percentage	Risk Ratio	95% CI Lower	95% CI Upper
After propensity score matching							
Mortality within 30 days	33	3.46	42	4.40	0.79	0.50	1.23
Mortality within 60 days	41	4.30	45	4.72	0.91	0.60	1.38
Inpatient services	185	19.39	166	17.4	1.11	0.92	1.35
Critical Care	66	6.92	62	6.50	1.07	0.76	1.49
Mechanical ventilation	42	4.40	38	3.98	1.11	0.72	1.70
30-day composite outcome	58	6.08	62	6.50	0.94	0.66	1.32
60-day composite outcome	62	6.50	64	6.71	0.97	0.69	1.36
Acute Kidney Injury	97	10.17	88	9.22	1.10	0.84	1.45
Renal replacement therapy	18	1.89	13	1.36	1.39	0.68	2.81

3.3. Laboratory values

Table 3 describes mean values of C-reactive protein (mg/L), Lactate dehydrogenase (U/L), Erythrocyte sedimentation rate (mm/hr), Alanine aminotransferase (U/L), Aspartate aminotransferase (U/L), Serum Bilirubin (mg/dL) and Serum Ferritin (ng/ml). We observed statistically significant difference in mean values of C-Reactive protein and Alanine Aminotransferase, both values were significantly higher in non-sarcoidosis group (Table 3).

4. Discussion

In our large cohort of propensity score matched analysis, previous diagnosis of pulmonary sarcoidosis was not independently associated with poor COVID-19 outcomes. We have noted a COVID-19 mortality rate of 4.3 % in patients with pulmonary sarcoidosis. Interestingly, our findings are in stark contrast to previously available limited data on risk of severe COVID-19 disease in pulmonary sarcoidosis. Some previous reports of COVID-19 in patients with sarcoidosis pointed toward an increased risk of severe disease, however, no matched analysis was available to compare outcomes with a non-pulmonary sarcoidosis cohort

[5,6]. Morgenthau et al. in their cohort of 37 patients with sarcoidosis reported a mortality rate of 16.2 % (n = 6) [3]. Similarly, in a French multicenter registry of COVID19 patients that included 36 patients with sarcoidosis, 14 % mortality (n = 5) was reported [7]. The markedly higher reported mortality in earlier smaller studies was likely secondary to inclusion of only hospitalized patients, who are expected to carry higher disease related morbidity. We observed that a small proportion of pulmonary sarcoidosis patients with COVID-19 (less than 1 in 5) require hospitalization, with most being managed as outpatients. Inclusion of both hospitalized patients as well as out-patients in our cohort explains the lower mortality observed in our report and paints a truer 'real world' picture of COVID-19 related morbidity in pulmonary sarcoidosis patients.

Nonetheless, in this large cohort, the crude rates of mortality and critical illness in patients with pulmonary sarcoidosis were higher when compared to those without pulmonary sarcoidosis. Higher numbers of these patients required hospitalization and mechanical ventilation and developed complications including renal injury requiring renal replacement therapy. Thus, it can be inferred that patients with pulmonary sarcoidosis comprise a high-risk cohort for COVID-19 related severe disease. The fact that the increase in risk is not sustained

Table 3
Laboratory values after COVID 19 episodes in the two matched and unmatched groups.

Outcome	After propensity matching				p-value
	Sarcoidosis cohort (n = 954)		Non- Sarcoidosis cohort (n = 954)		
	Patients with Outcome	Mean (SD)	Patients with Outcome	Mean (SD)	
C Reactive protein (mg/L)	201	54.53 (68.45)	189	78.56 (91.36)	<0.001
Lactate dehydrogenase (U/L)	158	389.22 (234.90)	164	388.56 (217.52)	0.98
Erythrocyte sedimentation rate (mm/hr)	78	57.49 (30.83)	57	56.60 (30.03)	0.86
Alanine aminotransferase (U/L)	297	30.94 (25.41)	279	40.32 (74.52)	0.04
Aspartate aminotransferase (U/L)	296	38.03 (45.53)	278	51.79 (143.25)	0.12
Serum Bilirubin (mg/dL)	299	0.60 (0.48)	279	0.66 (1.30)	0.43
Serum Ferritin (ng/ml)	165	824.44 (1177.06)	166	965.01 (1201.80)	0.28

Table Legend: Abbreviation: SD: Standard Deviation.

following robust propensity matching implies that this excess risk is derived from higher burden of comorbid diseases and other risk factors for severe COVID-19 prevalent in the pulmonary sarcoidosis group.

Strengths of our study include the large-included cohort of patients with sarcoidosis and robust control of confounders. This is also the first report that captures both inpatient and ambulatory sarcoidosis patients with COVID-19 and allows for comparison with a non-pulmonary sarcoidosis control cohort.

Propensity score was employed for patient matching. In this method, a single propensity score is assigned to each patient summarizing all measured confounders and then cases and controls are matched. This provides a simple tool for matched analysis, to conventional independent matching on all of the covariates [8]. Limitations to this technique include: i) The technique cannot balance unmeasured characteristics and confounders; ii) The analysis does not “fix” any other potential methodologic biases that may exist in retrospective studies and studies conducted on electronic healthcare record data [8]. Care was taken by the study authors to limit study outcomes and variables to those that are less likely to suffer from such bias. We also were not able to study the effect of immunosuppressant use, presence of malignancy, pregnancy and other immunosuppressive states like organ transplantation on outcomes in sarcoidosis cohort. These limitations could be addressed by prospective studies. Further, since only patients with pulmonary sarcoidosis were included, excluding multi-organ sarcoidosis, the outcomes in those with respect to COVID-19 may be different.

In conclusion, in a large research network study, we found that previous diagnosis of pulmonary sarcoidosis does not independently increase risk of worse COVID-19 outcomes, however there is high COVID-19 related morbidity in these patients owing to higher prevalence of risk factors of severe COVID. These data emphasize the importance of adherence to preventative measures in this high-risk cohort.

Funding source

Research reported in this publication was supported by the National Institute of General Medical Sciences of the National Institutes of Health under Award Number 5U54GM104942-05. The content is solely the responsibility of the authors and does not necessarily represent the official views of the National Institutes of Health.

Guarantor

YBH.

CRediT authorship contribution statement

Yousaf B. Hadi: Funding acquisition, of the, Data curation, Formal analysis, of the data, Interpretation of the data, Writing – original draft, Drafting the work or revising it critically for important intellectual content, Final approval of the version to be published. **Dhairya A. Lakhani:** Funding acquisition, of the, Data curation, Formal analysis, of the data, Interpretation of the data, Writing – original draft, Drafting the work or revising it critically for important intellectual content, Final approval of the version to be published. **Syeda F.Z. Naqvi:** Funding acquisition, of the, Data curation, Formal analysis, of the data, Interpretation of the data, Writing – original draft, Drafting the work or revising it critically for important intellectual content, Final approval of the version to be published. **Shailendra Singh:** Writing – original draft, Drafting the work or revising it critically for important intellectual content, Final approval of the version to be published. **Justin T. Kupec:** Writing – original draft, Drafting the work or revising it critically for important intellectual content, Final approval of the version to be published.

Declaration of competing interest

All authors have no relevant disclosures.

Appendix A. Supplementary data

Supplementary data to this article can be found online at <https://doi.org/10.1016/j.rmed.2021.106538>.

References

- [1] A. Calender, D. Israel-Biet, D. Valeyre, Pacheco YJTI, Modeling potential autophagy pathways in COVID-19 and sarcoidosis 41 (10) (2020) 856–859.
- [2] A.H. Györfi, M. Kopp, M. May, et al., Glucocorticoid-induced Relapse of COVID-19 in a Patient with Sarcoidosis, 2020.
- [3] A.S. Morgenthau, M.A. Levin, R. Freeman, D.L. Reich, E.J.L. Klang, Moderate or severe impairment in pulmonary function is associated with mortality in sarcoidosis patients infected with SARS-CoV-2 198 (5) (2020) 771–775.
- [4] Southern BJCCJoM, Patients with Interstitial Lung Disease and Pulmonary Sarcoidosis Are at High Risk for Severe Illness Related to COVID-19, 2020.
- [5] M. Gianfrancesco, K.L. Hyrich, S. Al-Adely, et al., Characteristics Associated with Hospitalisation for COVID-19 in People with Rheumatic Disease: Data from the COVID-19 Global Rheumatology Alliance Physician-Reported Registry, 2020.
- [6] N.J. Sweiss, P. Korsten, H. Syed, et al., When the Game Changes: Guidance to Adjust Sarcoidosis Management during the COVID-19 Pandemic, 2020.
- [7] F. Jeny, R. Lhote, G. Lorillon, et al., Correspondence on ‘Glucocorticoid-Induced Relapse of COVID-19 in a Patient with Sarcoidosis’, 2020.
- [8] G.N. Okoli, R.D. Sanders, P. Myles, Demystifying propensity scores, Br. J. Anaesth. 112 (1) (2014) 13–15.