



# Minute-scale detection of SARS-CoV-2 using a low-cost biosensor composed of pencil graphite electrodes

Lucas F. de Lima<sup>a,b,c,d,e,f,g</sup> , André L. Ferreira<sup>a,b,c,d,e,f,g</sup> , Marcelo D. T. Torres<sup>a,b,c,d,e,f</sup> , William R. de Araujo<sup>g,1</sup>, and Cesar de la Fuente-Nunez<sup>a,b,c,d,e,f,1</sup>

<sup>a</sup>Machine Biology Group, Departments of Psychiatry and Microbiology, University of Pennsylvania, Philadelphia, PA 19104; <sup>b</sup>Institute for Biomedical Informatics, Perelman School of Medicine, University of Pennsylvania, Philadelphia, PA 19104; <sup>c</sup>Institute for Translational Medicine and Therapeutics, Perelman School of Medicine, University of Pennsylvania, Philadelphia, PA 19104; <sup>d</sup>Department of Bioengineering, School of Engineering and Applied Science, University of Pennsylvania, Philadelphia, PA 19104; <sup>e</sup>Department of Chemical and Biomolecular Engineering, School of Engineering and Applied Science, University of Pennsylvania, Philadelphia, PA 19104; <sup>f</sup>Penn Institute for Computational Science, University of Pennsylvania, Philadelphia, PA 19104; and <sup>g</sup>Portable Chemical Sensors Lab, Department of Analytical Chemistry, Institute of Chemistry, State University of Campinas, São Paulo 13083-970, Brazil

Edited by Alexis T. Bell, University of California, Berkeley, CA, and approved June 14, 2021 (received for review April 8, 2021)

COVID-19 has led to over 3.47 million deaths worldwide and continues to devastate primarily middle- and low-income countries. High-frequency testing has been proposed as a potential solution to prevent outbreaks. However, current tests are not sufficiently low-cost, rapid, or scalable to enable broad COVID-19 testing. Here, we describe LEAD (Low-cost Electrochemical Advanced Diagnostic), a diagnostic test that detects severe acute respiratory syndrome coronavirus 2 (SARS-CoV-2) within 6.5 min and costs \$1.50 per unit to produce using easily accessible and commercially available materials. LEAD is highly sensitive toward SARS-CoV-2 spike protein (limit of detection = 229 fg·mL<sup>-1</sup>) and displays an excellent performance profile using clinical saliva (100.0% sensitivity, 100.0% specificity, and 100.0% accuracy) and nasopharyngeal/oropharyngeal (88.7% sensitivity, 86.0% specificity, and 87.4% accuracy) samples. No cross-reactivity was detected with other coronavirus or influenza strains. Importantly, LEAD also successfully diagnosed the highly contagious SARS-CoV-2 B.1.1.7 UK variant. The device presents high reproducibility under all conditions tested and preserves its original sensitivity for 5 d when stored at 4 °C in phosphate-buffered saline. Our low-cost and do-it-yourself technology opens new avenues to facilitate high-frequency testing and access to much-needed diagnostic tests in resource-limited settings and low-income communities.

COVID-19 | sensor | point of care | graphite | ACE2

Since its onset, the COVID-19 pandemic has led to 3.47 million deaths and costed our economy billions of dollars (1, 2). Different methods using RT-PCR and serology tests have been used to diagnose SARS-CoV-2 in saliva and nasopharyngeal/oropharyngeal (NP/OP) swab samples (3). RT-PCR has served as the gold-standard test during the pandemic because of its high accuracy and specificity. However, this technique is time-intensive, costly, and requires highly skilled workers for operation, thus making it an unsuitable solution for mass testing, especially in developing countries where resources are limited (4, 5).

Most rapid tests commercially available for diagnosing COVID-19 are antigen-based and exhibit low sensitivity, which limits their ability to accurately identify asymptomatic individuals (6–8), thus hindering proper control of viral spread (6–8). Therefore, there is an urgent need to develop low-cost, sensitive, and rapid tests for the early diagnosis of severe acute respiratory syndrome coronavirus 2 (SARS-CoV-2) infections. In an attempt to overcome such limitations, several portable devices have been developed (9–11) offering rapid and decentralized clinical diagnosis (12–15). However, these electrochemical, colorimetric, serological, and molecular-based technologies are limited by their relatively high cost (>\$10 per test), need for materials and equipment that are not easily accessible, requirement of specialized labor, and the fact that they are time-consuming and not sufficiently rapid.

Here, we report LEAD (Low-cost Electrochemical Advanced Diagnostic), a technology for rapid COVID-19 diagnosis that uses highly accessible and inexpensive materials. The do-it-yourself

(DIY) test consists of a transducer made of graphite leads modified with human angiotensin-converting enzyme 2 (ACE2) receptor and a plastic vial (Fig. 1*A–C*). This testing device enables on-site SARS-CoV-2 detection within 6.5 min, faster than tests currently approved by the Food and Drug Administration (FDA) (Fig. 1*D*). Each LEAD unit can be manufactured for a total cost of \$1.50, including the vial (\$0.30), graphite leads (\$0.20), and all the modifiers required to ensure high sensitivity (\$1.00), i.e., glutaraldehyde (GA), gold nanoparticles (AuNPs), cysteamine (cys), ACE2, and bovine serum albumin (BSA). The graphite working electrode (WE) was modified with AuNPs stabilized with cys to allow anchoring of ACE2 (16). BSA was used to block the remaining active sites on the electrode surface to avoid nonspecific interactions between the clinical sample and the biosensor. In summary, we describe a low-cost and rapid COVID-19 test that is easy to assemble and may enable population-wide high-frequency testing. Due to its reduced cost and DIY design, LEAD provides an opportunity to increase access to testing to underserved populations.

## Significance

High-frequency testing is urgently needed to help prevent the spread of COVID-19. Here, we introduce Low-cost Electrochemical Advanced Diagnostic (LEAD), a diagnostic test that detects SARS-CoV-2 within 6.5 min, costs \$1.50 per unit, and uses easily assembled materials such as human angiotensin-converting enzyme 2, modified graphite leads, and a plastic vial. LEAD presents sensitivity comparable to the gold-standard methods (limit of detection for the viral spike protein = 229 fg·mL<sup>-1</sup>) and displays an excellent performance profile when tested using clinical saliva (100.0% sensitivity, 100.0% specificity, 100.0% accuracy) and nasopharyngeal/oropharyngeal (88.7% sensitivity, 86.0% specificity, 87.4% accuracy) samples. Finally, no cross-reactivity with other viruses was detected and the test displayed a viable shelf-life of 5 d when stored at 4 °C.

Author contributions: L.F.d.L., A.L.F., M.D.T.T., W.R.d.A., and C.d.I.F.-N. designed research; L.F.d.L., A.L.F., and M.D.T.T. performed research; W.R.d.A. and C.d.I.F.-N. contributed new reagents/analytic tools; L.F.d.L., A.L.F., M.D.T.T., and W.R.d.A. analyzed data; and L.F.d.L., A.L.F., M.D.T.T., W.R.d.A., and C.d.I.F.-N. wrote the paper.

The authors declare no competing interest.

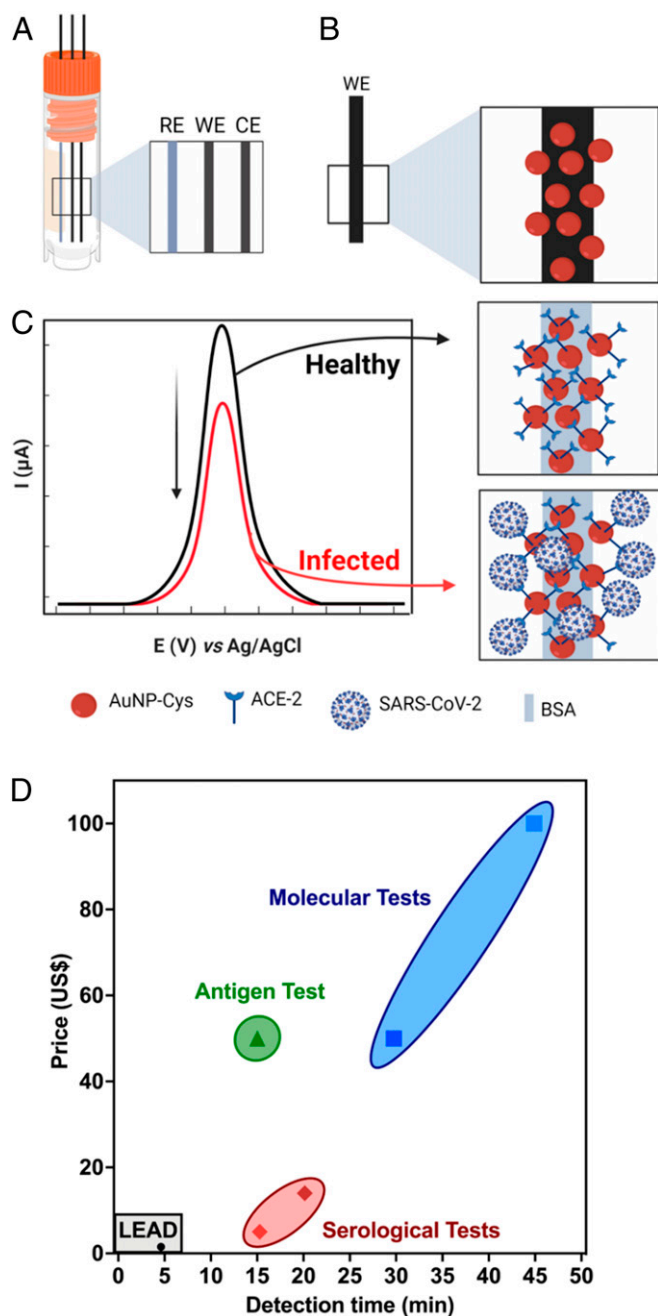
This article is a PNAS Direct Submission.

This open access article is distributed under [Creative Commons Attribution License 4.0 \(CC BY\)](https://creativecommons.org/licenses/by/4.0/).

<sup>1</sup>To whom correspondence may be addressed. Email: [wra@unicamp.br](mailto:wra@unicamp.br) or [cfuente@upenn.edu](mailto:cfuente@upenn.edu).

This article contains supporting information online at <https://www.pnas.org/lookup/suppl/doi:10.1073/pnas.2106724118/-DCSupplemental>.

Published July 9, 2021.



**Fig. 1.** LEAD, a rapid and low-cost electrochemical biosensor. (A) Schematic representation of graphite electrodes used in LEAD. (B) AuNPs-cys functionalization on graphite electrodes after modification with glutaraldehyde. (C) Modification of AuNPs-cys with ACE2 using EDC and NHS to enable amide bond formation and BSA for surface blockage. The analytical response of LEAD in the presence of SARS-CoV-2 was based on current suppression due to selective binding of viral SP with the ACE2-functionalized electrode, which partially blocked the electrochemical area, leading to decreased peak current of the redox probe ( $[\text{Fe}(\text{CN})_6]^{3-/4-}$  solution). (D) Cost and detection time comparison between LEAD and existing FDA-approved antigen, serological, and molecular tests (47).

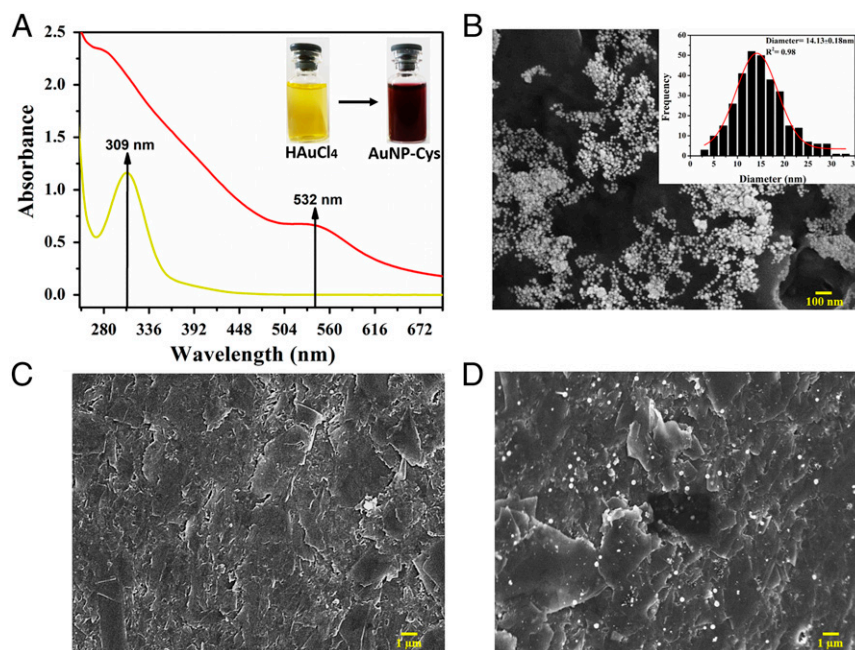
## Results

**Biosensor Design.** The electrochemical device was designed to explore the remarkable binding affinity between SARS-CoV-2 spike protein (SP) and human ACE2, its receptor in the human body (17, 18) (Fig. 1A). Thus, ACE2 was used as our recognition

element to ensure sensitive and selective viral detection (19). The WE, where the (electro)chemical reaction/interaction takes place and is subsequently converted to a detectable analytical signal, was functionalized by the drop-casting method. The graphite WE was polished with a 2,000-grit sandpaper to remove impurities from the surface, and a contact area of 1.0-cm length by 0.7-mm diameter was obtained. Next, in order to generate a cross-linked polymer, the graphite pencil electrode (GPE) was immersed in a 25.0% (vol/vol) GA solution for 1 h at 37 °C. GA has been extensively used to modify electrochemical surfaces as it introduces aldehyde functional groups that facilitate the covalent attachment of compounds containing amine terminal moieties (20, 21). Here, we leveraged GA to modify the GPE's surface with AuNPs functionalized with cysteine (AuNPs-cys). First, we synthesized the AuNPs following protocols similar to those reported by our group previously (22). The AuNPs were functionalized with cysteine by their thiol groups. Next, the modified graphite substrate was kept under an AuNPs-cys solution at 37 °C for 75 min to allow the immobilization of AuNPs-cys by cross-linking between the aldehyde functional groups of GA and the amine functional groups of cysteine (20). Subsequently, we added a solution containing the preprepared reactive intermediary *N*-(3-dimethylaminopropyl)-*N*-ethylcarbodiimide hydrochloride (EDC) and *N*-hydroxysuccinimide (NHS) with ACE2, EDC-NHS-ACE2, to enable anchoring between the amine groups of AuNPs-cys and the EDC-NHS-ACE2, yielding ACE2-AuNPs-cys after 30 min at 37 °C. The electrodes were then incubated with BSA at 37 °C for 30 min in order to block the electrode's remaining active sites after immobilization of ACE2 (Fig. 1B). BSA is a functionally inert protein with a high density of superficial lysine residues that is commonly used for biosensor development (23). Next, we exposed the sensor to samples containing SP or SARS-CoV-2 and changes in the peak current (*i*<sub>p</sub>) of a redox probe ( $[\text{Fe}(\text{CN})_6]^{3-/4-}$ ) enabled diagnosis of healthy samples versus those that were infected with SARS-CoV-2 (Fig. 1C).

**Characterization Assays.** Experiments were then performed to characterize the biosensor. Fig. 2A presents an ultraviolet-visible (UV-vis) spectrum obtained from a  $\text{HAuCl}_4$  solution with a maximum absorption band at 309 nm. After AuNP-cys formation, a wine color was obtained displaying a UV-vis absorption band at 532 nm. Successful formation of the spherical AuNP-cys solution was confirmed by scanning electron microscopy (SEM) images (Fig. 2B), presenting a mean diameter of  $14.13 \pm 0.18$  nm. The bare GPE presented a flat surface containing well-stacked carbon sheets (Fig. 2C). The AuNP-cys appeared well-distributed within the GPE surface (Fig. 2D) after the optimized functionalization process, facilitating the subsequent ACE2 immobilization onto the surface of the electrode.

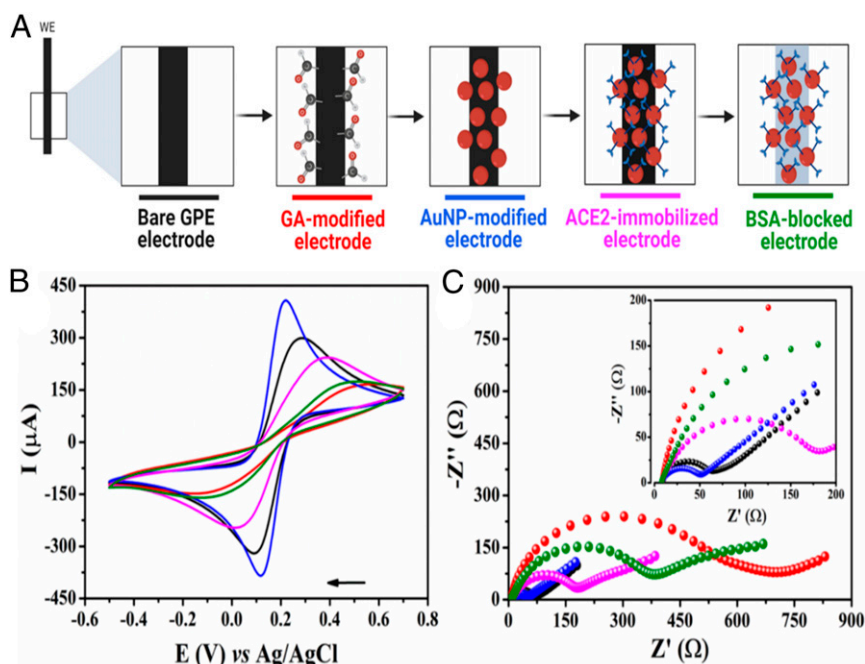
**Electrochemical Characterization of the Biosensor.** The electrochemical behavior of each functionalization step (Fig. 3A) was analyzed by cyclic voltammetry (CV) and electrochemical impedance spectroscopy (EIS). CV (Fig. 3B) and Nyquist (Fig. 3C) plots revealed that the bare GPE electrode (black line) possessed a resistance to charge transfer ( $R_{CT}$ ) of  $57.8 \pm 2.5 \Omega$ , indicating a small resistance toward redox conversion and a high electron transfer on the electrode surface. This result was in agreement with the high *i*<sub>p</sub> of  $303.3 \pm 13.6 \mu\text{A}$  shown for the same electrode by CV plot (black line). Next, we modified the WE with GA (red line), leading to an increased  $R_{CT}$  to  $383.1 \pm 8.3 \Omega$  and decreased *i*<sub>p</sub> to  $165.8 \pm 6.1 \mu\text{A}$ . These data indicate that GA acts as an electrical insulator hindering the electron transfer at the interface of the WE by preventing the redox probe from reaching the GPE surface (24, 25). AuNPs-cys were then anchored covalently to the surface of the GPE (blue line) through an amide bond between the amine group from the cysteine and the aldehyde groups from the glutaraldehyde (26). The ACE2 anchoring step was successfully confirmed by the presence of an amide band at  $1,650 \text{ cm}^{-1}$  in our Fourier transform



**Fig. 2.** AuNPs-cys and GPE characterization studies. (A) UV-vis spectrum obtained for HAuCl<sub>4</sub> solution (yellow color with a maximum absorbance band at 309 nm) and AuNPs-cys formation (wine color and absorbance band at 532 nm). (B) SEM image of AuNPs-cys dispersion with a histogram inset. The spherical AuNPs-cys present a mean diameter of  $14.13 \pm 0.18$  nm. (C) SEM image of the bare GPE electrode polished showing a flat surface containing carbon sheets. (D) SEM image of the GPE electrode modified with GA and AuNPs-cys, which present a high AuNPs-cys distribution throughout the electrode, thus facilitating ACE2 immobilization and SARS-CoV-2 SP detection.

infrared (FTIR) spectroscopy analysis (*SI Appendix, Fig. S1*) (26, 27). The functionalization of GPE with AuNPs-cys led to decreased values of  $R_{CT}$  ( $47.6 \pm 1.3 \Omega$ ) and increased ip ( $410.5 \pm 13.7$

$\mu\text{A}$ ) compared to the previous functionalization step (Fig. 3A). The higher current and lower charge transfer resistance detected resulted from the high electrocatalytic and surface area presented



**Fig. 3.** Functionalization steps and electrochemical characterization of LEAD. (A) Schematic representation of stepwise functionalization steps of LEAD. (B) CVs recorded for each modification step of the GPE surface in a solution of  $5.0 \text{ mmol}\cdot\text{L}^{-1} [\text{Fe}(\text{CN})_6]^{3-/4-}$  containing  $0.1 \text{ mol}\cdot\text{L}^{-1}$  KCl as the supporting electrolyte at a scan rate of  $50 \text{ mV}\cdot\text{s}^{-1}$ . (C) Nyquist plots were obtained using the same conditions as in A. (*Inset*) A zoomed view of the plots in high-frequency regions. The following experimental conditions were used for these experiments: frequency range from  $1 \times 10^5$  Hz to 0.1 Hz and 10-mV amplitude. All measurements were performed at room temperature.

by the AuNPs, which contributed to fast electron-transfer kinetics and an active nanostructured electrodic surface (28, 29), thus conferring very attractive features for sensor development. In addition, the  $-\text{NH}_3^+$  functional groups present on the AuNPs-cys-modified GPE led to favorable electrostatic interactions of the anionic probe  $[\text{Fe}(\text{CN})_6]^{3-/4-}$ , providing a preconcentration of the redox probe close to the electrode interface. This led to an improved electrochemical response, i.e., higher current peak (30). The synthesized AuNP-cys dispersion demonstrated adequate stability for up to 7 d when stored at 4 °C under a light-protected environment (SI Appendix, Fig. S2). This stability allowed AuNP-cys synthesis to be carried out weekly, facilitating the large-scale modification process of GPE.

The electrodic functionalization with AuNPs-cys was evaluated through the redox behavior of the adsorbed AuNPs by CVs recorded using 0.1 mol·L<sup>-1</sup> H<sub>2</sub>SO<sub>4</sub> after different periods of immersion in the AuNPs-cys suspension (SI Appendix, Fig. S3). Indeed, an anodic peak was observed at +880 mV and a cathodic peak at +522 mV, which correspond to the redox processes of Au (III) within the electrode surface (SI Appendix, Fig. S3A). We next optimized the period of electrodic exposition to AuNP-cys suspension to be 80 min (SI Appendix, Fig. S3B) based on the peak current of the anodic process derived from oxidation of the gold adsorbed on the GPE/GA surface. Subsequently, we immobilized the recognition element ACE2 onto the surface of the nanoparticles-functionalized GPE using EDC and NHS (magenta line). This led to increased  $R_{\text{CT}}$  values ( $182.6 \pm 2.2 \Omega$ ) and decreased  $i_p$  values ( $247.2 \pm 4.1 \mu\text{A}$ ) compared to the previous functionalization step (SI Appendix, Fig. S3), confirming the proper anchoring of our recognizing element (ACE2) to the electrode surface, which led to the hindrance of the faradaic processes of  $[\text{Fe}(\text{CN})_6]^{3-/4-}$  taking place at the modified GPE surface. As a final functionalization step, we immobilized BSA (green line) to block the remaining unmodified electrodic area to avoid nonspecific and undesired adsorption of other molecules (e.g., proteins and lipids). This step resulted in the highest  $R_{\text{CT}}$  values ( $985.7 \pm 12.7 \Omega$ ) and lowest  $i_p$  ( $177.4 \pm 3.2 \mu\text{A}$ ), suggesting a continued decline in the charge transfer kinetics after anchoring the AuNPs-cys due to the insertion of nonconductive materials (i.e., ACE2 and BSA).

**Analytical Performance of LEAD.** We used square wave voltammetry (SWV) for SARS-CoV-2 detection. This technique is highly sensitive, especially for detecting reversible redox species (31), such as potassium ferri- and ferrocyanide. Our electroanalytical method is based on the signal suppression induced by highly specific interactions between the SP and ACE2, i.e., an increase in the SP concentration leads to a concomitant decrease in the current signal of the redox probe  $[\text{Fe}(\text{CN})_6]^{3-/4-}$ . This means that the specific interaction between SP and ACE2 partially blocked the probe's access to the surface of the WE (32). To achieve enhanced detection of SARS-CoV-2, we optimized the following instrumental parameters: frequency, amplitude, and step potential. The highest peak current values for the redox probe were obtained using a frequency of 80.0 Hz, amplitude potential of 75.0 mV, and step potential of 8.0 mV (SI Appendix, Fig. S4).

Next, we evaluated the optimal incubation time for detecting SARS-CoV-2 in clinical samples by evaluating the analytical sensitivity parameter obtained from dose–response curves at very low SP concentrations (Fig. 4A). The experiments were recorded in triplicate using increased concentrations of SP, from  $1 \times 10^{-12}$  to  $1 \times 10^{-10}$  g·mL<sup>-1</sup>. The results were expressed as  $\Delta I = I - I_0$ , where  $I$  corresponds to the current recorded for the redox probe ( $[\text{Fe}(\text{CN})_6]^{3-/4-}$ ) after incubating the sample on the electrode surface and  $I_0$  corresponds to the current recorded for the redox probe before exposing the biosensor to the sample (Fig. 4A). Five minutes was determined to be the optimal incubation time due to the highest value of the angular coefficient of the dose–

response curves, demonstrating fast binding kinetics between the SARS-CoV-2 SP and the immobilized ACE2 on the electrode surface.

We also obtained an analytical curve for different concentrations of SP in 0.1 mol·L<sup>-1</sup> phosphate-buffered saline (PBS) (pH = 7.4) under optimized experimental conditions (Fig. 4B). Note that the SWV response for the redox probe  $[\text{Fe}(\text{CN})_6]^{3-/4-}$  decreased with increased concentration of SP due to suppression of the analytical signal ( $i_p$ ) induced by the highly specific interaction between the SP and the ACE2-modified GPE (17, 33). Binding of SP to the biosensor surface partially blocked the electroactive sites of LEAD, leading to current suppression and yielding a positive result indicative of the presence of SARS-CoV-2 SP.

The SWV signals ( $n = 3$  measurements using different biosensors) obtained at each concentration were plotted as a logarithmic function of the SP concentration (Fig. 4C). The analytical curve (Fig. 4C) was calculated at concentrations ranging from  $1 \times 10^{-14}$  g·mL<sup>-1</sup> to  $1 \times 10^{-9}$  g·mL<sup>-1</sup> of SP and displayed a linear behavior at the concentration range between  $1 \times 10^{-13}$  g·mL<sup>-1</sup> and  $1 \times 10^{-9}$  g·mL<sup>-1</sup> SP, resulting in an analytical sensitivity value of  $0.0575 \pm 0.0020 \mu\text{A}\cdot\text{g}^{-1}\cdot\text{mL}^{-1}$  and a high linear correlation ( $R^2$ ) of 0.994.

The limit of detection (LOD) and limit of quantification (LOQ) of LEAD were calculated according to the four-parameter logistic (4PL) curve (SI Appendix, Fig. S5), using Eqs. 1 and 2 (34). This method is commonly used for assays that determine biological binding interactions and reflect the underlying binding kinetics (35–37). Thus, the LOD and LOQ values of LEAD were 229 fg·mL<sup>-1</sup> and 0.91 pg·mL<sup>-1</sup>, respectively. Therefore, our device enabled the rapid detection of SP at very low concentrations (less than picograms per milliliter), providing high sensitivity (Fig. 4C) and a low LOD using highly accessible materials, such as pencil graphite and a plastic vial. In SI Appendix, Table S1 we show a side-by-side comparison of the performance of LEAD and other electrochemical detection methods described for SARS-CoV-2 diagnosis. Note that LEAD enables high detectability (LOD = 229 fg·mL<sup>-1</sup>), rapid testing time (6.5 min), and a very low production cost (\$1.50 per test). The testing time was recorded to be 6.5 min considering the sample incubation period (5 min), the time required to record two SWVs (before and after sample incubation, 1 min), and the washing step with PBS after incubating the sample (30 s).

To assess the diagnostic capability of LEAD we calibrated our biosensor using titrated solutions of inactivated SARS-CoV-2 ranging from  $10^2$  to  $10^6$  plaque-forming units (PFU)·mL<sup>-1</sup> (Fig. 4E and F). LEAD exhibited high sensitivity, presenting an LOD of 2.07 PFU·mL<sup>-1</sup>, corresponding to the order of 10 RNA copies per microliter, which is similar to RT-qPCR sensitivity (38, 39).

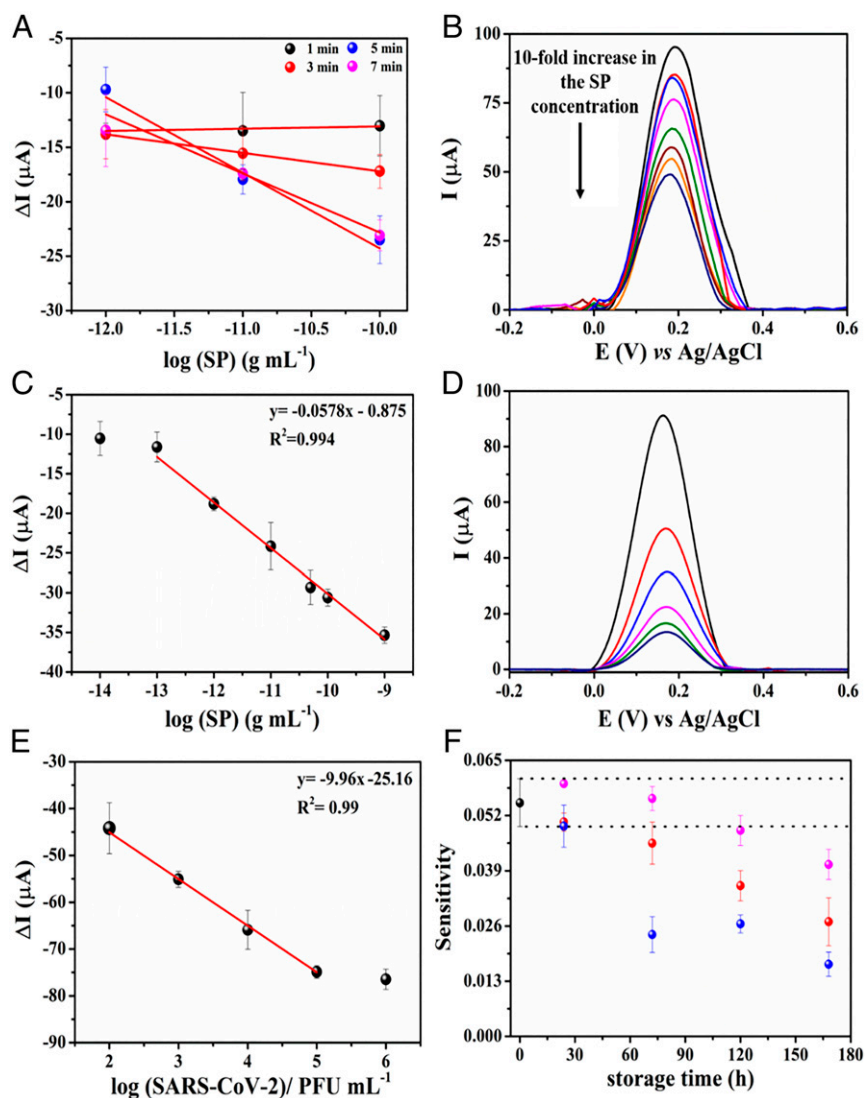
$$L_C = \mu_{\text{blank}} + t(1 - \alpha, n - 1)\sigma_{\text{blank}}, \quad [1]$$

where  $L_C$  is a value of blank limit,  $\mu_{\text{blank}}$  is the mean of signal intensities for  $n$  blank (negative control) replicates,  $\sigma_{\text{blank}}$  is the SD of blank replicates, and  $t(1 - \alpha, n - 1)$  is the  $1 - \alpha$  percentile of the t-distribution given  $n - 1$  degrees of freedom,  $\alpha = \beta = 0.05$  significance levels.

$$L_d = L_C + t(1 - \beta, m(n - 1))\sigma_{\text{test}}, \quad [2]$$

where  $L_d$  is the LOD in the signal domain,  $\sigma_{\text{test}}$  is the pooled SD of  $n$  test replicates, and  $t(1 - \beta, m(n - 1))$  is the  $1 - \beta$  percentile of the t-distribution given  $m(n - 1)$  degrees of freedom. Again, we set  $\alpha = \beta = 0.05$ , but these significance levels can be selected depending on the needs of a given study.

Our electrochemical biosensor was applied for SARS-CoV-2 detection in clinical samples containing a wide range of viral loads. The threshold cycle (Ct) of the RT-PCR data for all clinical samples analyzed ranged from 21.5 to 34.3 Ct. It is important to



**Fig. 4.** Kinetic study of the interaction between SARS-CoV-2 SP and LEAD. (A) Calibration curves built using SP at concentrations ranging from  $1 \times 10^{-12}$   $\text{g}\cdot\text{mL}^{-1}$  to  $1 \times 10^{-10}$   $\text{g}\cdot\text{mL}^{-1}$  and using different incubation times (ranging between 1 and 7 min). Increased analytical sensitivities were achieved after 5 min ( $6.94 \times 10^{-3} \pm 1.00 \times 10^{-3}$ ) and 7 min ( $5.42 \times 10^{-3} \pm 6.30 \times 10^{-3}$ ). Thus, 5 min was chosen as the optimal incubation time for LEAD. All measurements were recorded in triplicate, and each measure was done using a different sensor. (B) Baseline-corrected SWVs for the  $5.0 \text{ mmol}\cdot\text{L}^{-1}$   $[\text{Fe}(\text{CN})_6]^{3-/4-}$  redox probe after the electrode incubation with different concentrations of SP ranging from  $1 \times 10^{-14}$  to  $1 \times 10^{-9}$   $\text{g}\cdot\text{mL}^{-1}$ . (C) Linear regression for the analytical curve constructed using the suppression current signal. Conditions: frequency, 80 Hz; amplitude, 70 mV, and step, 8 mV. All experiments were carried out in triplicate ( $n = 3$ ), using  $5.0 \text{ mmol}\cdot\text{L}^{-1}$   $[\text{Fe}(\text{CN})_6]^{3-/4-}$  containing  $0.1 \text{ mol}\cdot\text{L}^{-1}$  KCl as the supporting electrolyte after exposure of the electrode to  $50 \mu\text{L}$  of standard SP solution for 5 min. (D) Baseline-corrected SWV plots for titrated-inactivated viral solutions at concentrations ranging from  $10^2$  to  $10^6$   $\text{PFU}\cdot\text{mL}^{-1}$  in VT.M. (E) Linearized correlation between the  $\Delta I$  values and concentration of inactivated virus in solution. The analytical curve was carried out in triplicate measurements using different LEAD devices. (F) Stability study under different storage conditions:  $25^\circ\text{C}$  (black circles),  $-20^\circ\text{C}$  (red circles), and stored dry at  $4^\circ\text{C}$  (blue circles) and stored at  $4^\circ\text{C}$  in PBS medium (pH = 7.4) (magenta circles) over 7 d. Sensitivity values were obtained by analytical curves in the concentration range from  $1 \times 10^{-12}$   $\text{g}\cdot\text{mL}^{-1}$  to  $1 \times 10^{-9}$   $\text{g}\cdot\text{mL}^{-1}$  of SP. All experiments were carried out in triplicate ( $n = 3$ ).

highlight that our results (current suppression –  $\Delta I$ ) presented a high linear correlation ( $R^2 = 0.954$ ) with Ct values ranging from 22.3 to 34.3 (SI Appendix, Fig. S6).

**Batch-to-Batch Reproducibility and Stability Assays.** We performed reproducibility assays of our device to ensure that different test batches performed similarly. To verify the reproducibility of the manufacturing and functionalization processes of LEAD we recorded SWVs in the presence of  $5 \text{ mmol}\cdot\text{L}^{-1}$   $[\text{Fe}(\text{CN})_6]^{3-/4-}$  after incubating the sensor with  $1 \times 10^{-12}$   $\text{g}\cdot\text{mL}^{-1}$  of SP prepared in  $0.1 \text{ mol}\cdot\text{L}^{-1}$  PBS (pH = 7.4). A relative SD of 4.31% was obtained for the analytical signal (current suppression of the redox probe)

using six sensors ( $n = 6$ ) from different batches, indicating excellent reproducibility (SI Appendix, Fig. S7).

Next, we evaluated the stability of LEAD under different temperature and storage conditions ( $25^\circ\text{C}$ , stored dry at  $4^\circ\text{C}$ , stored at  $4^\circ\text{C}$  in PBS, and at  $-20^\circ\text{C}$ ) over 7 d. Analytical curves were generated in  $0.1 \text{ mol}\cdot\text{L}^{-1}$  PBS (pH = 7.4) at a concentration ranging from  $1 \times 10^{-12}$   $\text{g}\cdot\text{mL}^{-1}$  to  $1 \times 10^{-9}$   $\text{g}\cdot\text{mL}^{-1}$  of SP (Fig. 4D). Sensors stored under dry conditions at  $4^\circ\text{C}$  (without PBS) were stable for 24 h. However, after 72 h the stability decreased to 50% of the initial sensitivity (Fig. 4F). Interestingly, electrodes stored at  $4^\circ\text{C}$  in PBS solution were stable for 120 h, and the mean sensitivity of the device decreased by only 23% after 6 d compared to

the initial performance of LEAD (Fig. 4F). These results demonstrate that the immobilized ACE2 maintained its activity over prolonged periods of time (up to 5 d) when stored in a refrigerated aqueous solution.

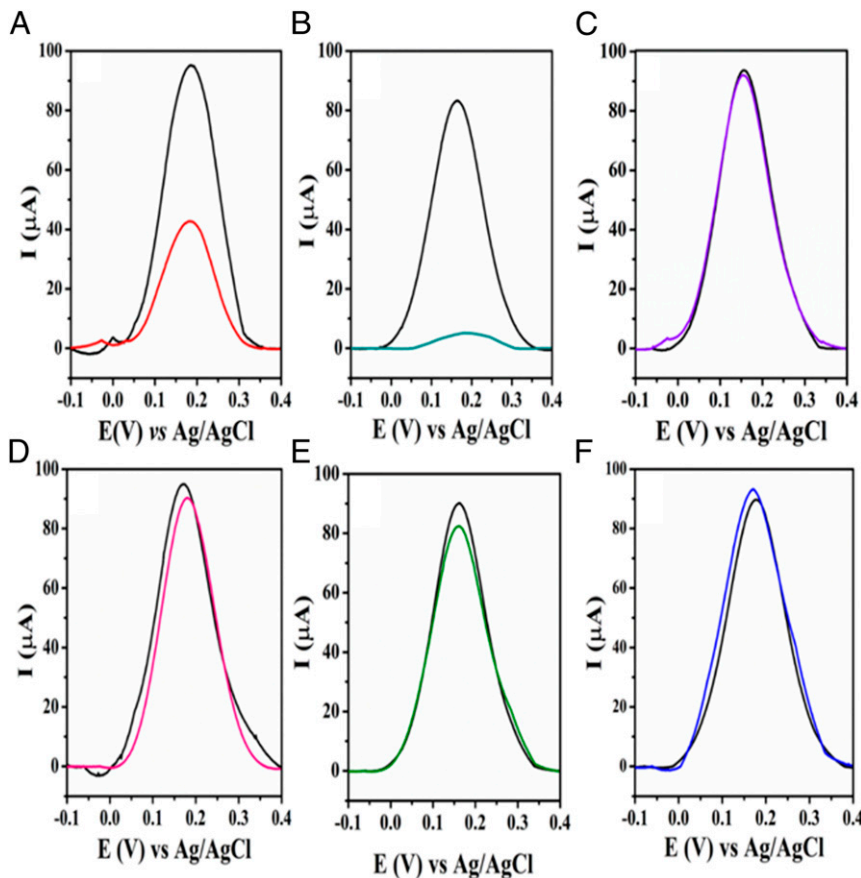
**Cross-Reactivity Experiments.** Cross-reactivity studies using other viruses were carried out to investigate the specificity of our biosensor toward SARS-CoV-2 and rule out potential off-target reactivity. Using the same experimental conditions as for SARS-CoV-2 (Fig. 5), we tested four other viral strains: H<sub>1</sub>N<sub>1</sub> (A/California/2009), Influenza-B/Colorado, herpes simplex virus-2, and murine hepatitis virus (MHV). No cross-reactivity was detected against any of these viruses as indicated by the response to all strains, which presented a current suppression ( $\Delta I$ ) lower than the cutoff value of 10  $\mu\text{A}$  obtained by SWV for the lowest SP concentration detected (Fig. 4C). These results further highlight the translatability of our sensor toward COVID-19. Interestingly, LEAD displayed a higher affinity to the highly infectious SARS-CoV-2 UK variant 1.1.7.B (Fig. 5B) than to wild-type SARS-CoV-2 (Fig. 5A), which is in agreement with recent studies demonstrating that mutations in the receptor-binding domain of the spike glycoprotein variant led to enhanced binding affinity toward ACE2 (40, 41).

**Detection of SARS-CoV-2 in Clinical Samples.** To evaluate the diagnostic efficacy of LEAD, we tested 103 NP/OP (Table 1) and 10

saliva samples (SI Appendix, Tables S2 and S3) obtained from inpatients from the Hospital of the University of Pennsylvania after heat inactivation. All samples were confirmed as COVID-19 positives and COVID-19 negatives by RT-PCR. Table 1 shows that out of the 103 NP/OP samples tested (53 COVID-19-positive and 50 COVID-19-negative samples) our device accurately detected 90 (88.7% sensitivity, 86.0% specificity, and 87.4% accuracy). To evaluate the diagnostic efficacy of our device in a more complex biological environment, we tested 10 saliva samples (3 positive and 7 negative samples) as a proof of principle. LEAD presented higher accuracy, sensitivity, and specificity (100.0%) for saliva samples than for NP/OP swabs, although the sample size was substantially different between the two groups.

## Discussion

We present a simple, inexpensive, and portable electrochemical biosensor that enables diagnosis of COVID-19 within 6.5 min using 50  $\mu\text{L}$  of sample and highly accessible and commercially available materials (i.e., graphite pencil leads and a plastic vial), yielding a test that costs \$1.50. The WE can be functionalized in less than 3 h and remains stable for over 5 d when stored in a PBS solution at 4  $^{\circ}\text{C}$ . LEAD displayed excellent sensitivity for detecting SARS-CoV-2 SP (LODs of 229  $\text{fg}\cdot\text{mL}^{-1}$  and 2.07



**Fig. 5.** Cross-reactivity studies of LEAD using other coronaviruses and noncoronavirus strains. Baseline-corrected SWVs recorded at optimized experimental conditions before (black lines) and after incubation of the electrode with (A) SARS-CoV-2, (B) SARS-CoV-2 UK variant B, and possible interfering viruses such as (C) H<sub>1</sub>N<sub>1</sub>-A/California/2009, (D) Influenza-B/Colorado, (E) herpes simplex virus-2, and (F) MHV. The following conditions were used for all experiment: frequency of 80 Hz, amplitude of 70 mV, and step potential 8 mV. All experiments were performed in 5.0  $\text{mmol}\cdot\text{L}^{-1}$  [Fe(CN)<sub>6</sub>]<sup>3-/4-</sup> in 0.1  $\text{mol}\cdot\text{L}^{-1}$  KCl. The specificity studies were carried out using the following viral strains: MHV at 10<sup>8</sup> PFU·mL<sup>-1</sup> (coronavirus); H<sub>1</sub>N<sub>1</sub>, A/California/2009; Influenza B, B/Colorado; HSV2, and herpes simplex virus-2 (all at 10<sup>5</sup> PFU·mL<sup>-1</sup>). The analysis of the contagious SARS-CoV-2 B.1.1.7 UK variant showed that the variant presented higher interaction between SP and ACE2 compared to SARS-CoV-2. Each virus was incubated in a final volume of 50  $\mu\text{L}$  for 5 min. All viruses were in stored VTM and experiments were performed at room temperature.

**Table 1. Detection of SARS-CoV-2 in OP/NP and saliva samples by LEAD**

	RT-qPCR			Sensitivity	Specificity	Accuracy
	Positive	Negative	Total			
NP swabs						
Positive	47	7	54	47/53 (88.7%)	43/50 (86.0%)	90/103 (87.4%)
Negative	6	43	49			
Saliva						
Positive	3	—	3	3/3 (100.0%)	7/7 (100.0%)	10/10 (100.0%)
Negative	—	7	7			

Analytical features of LEAD obtained using clinical samples. The sensitivity, specificity, and accuracy of LEAD for NP/OP and saliva samples were measured. Positive and negative values for the clinical samples were obtained by RT-qPCR.

PFU·mL<sup>-1</sup> for free SP in PBS medium and inactivated virus in virus transportation medium [VTM] medium, respectively) and did not cross-react with other relevant viruses.

The robustness and accuracy of LEAD were successfully evaluated by analyzing 113 clinical samples (both OP/NP and saliva) including the highly infectious SARS-CoV-2 UK variant 1.1.7.B, indicating that our method does not require further adaptations to accurately diagnose the SARS-CoV-2 UK variant B.1.1.7. However, additional variants would have to be tested to assess the broad applicability of LEAD, particularly when considering emerging mutants. Based on its low cost, selectivity, and accuracy features, LEAD constitutes a potential candidate for high-frequency testing at the point of care and may enable population surveillance and pandemic outbreak control since the modification of the electrodes can be performed in batch and the method can be automated to facilitate mass production. Collectively, our technology may help limit asymptomatic spread through high-frequent testing, i.e., multiple times per week (22), since it is sufficiently inexpensive (US\$1.50), rapid (results within 6.5 min), and easy to assemble and use. Finally, LEAD can be applied beyond COVID-19 for the detection of other emerging pathogens (e.g., other viruses, bacteria, fungi, etc.) as long as the infectious agent and its receptor are available.

## Materials and Methods

**Materials.** All reagents used in this work were of analytical grade. The deionized water (resistivity  $\geq 18 \text{ M}\Omega \text{ cm}$  at 25 °C) was obtained from a Milli-Q Advantage-0.10 purification system (Millipore). ACE2 Fc Chimera, Human was obtained from GenScript. Spike protein was kindly donated by Scott Hensley, University of Pennsylvania, Philadelphia. EDC and NHS with a degree of purity  $\geq 98\%$ , gold(III) chloride trihydrate ( $\text{HAuCl}_4 \cdot 0.3\text{H}_2\text{O}$ ) (99.99%), sodium borohydride ( $\text{NaBH}_4$ ) with  $\geq 98\%$  purity, cysteamine hydrochloride (cys) with 98% purity, phosphate buffer saline solution, pH = 7.4, and glutaraldehyde (25%, vol/vol) were purchased from Sigma-Aldrich. Graphite pencils 0.7-mm and 0.9-mm diameter under the trade name of Pentel were purchased in a local store in Philadelphia. Ag/AgCl conductive ink was acquired from Creative Materials.

Electrochemical measurements were carried out using a MULTI AUTOLAB M101 potentiostat with six channels, controlled by the NOVA 2.1 software. Cryogenic vials were used as the electrochemical cell (2.0-mL volume), each containing three electrodes. Graphite pencils (0.9 mm) were used as reference and counterelectrodes, and graphite pencils (0.7 mm) were used as the WE. The Ag/AgCl ink was painted over one of the graphites to create the reference electrode.

**Characterization Studies.** Electrochemical techniques, such as CV, were carried out in a potential window from 0.7 to  $-0.3 \text{ V}$  with a scan rate of  $50 \text{ mV}\cdot\text{s}^{-1}$ . EIS was conducted in the frequency range from  $1 \times 10^5 \text{ Hz}$  to 0.1 Hz using an amplitude of 10 mV and under open circuit potential. Both electrochemical techniques were used to characterize the electrochemical behavior of electrodes in each modification step. In SWV studies, potentials were scanned from  $-0.4$  to 1.0 V, corresponding to a frequency of 80 Hz, amplitude of 75 mV, and step low of 8 mV. All electrochemical characterizations were performed in 0.1 mol·L<sup>-1</sup> KCl solution containing 5.0 mmol·L<sup>-1</sup> of the mixture

[ $\text{Fe}(\text{CN})_6$ ]<sup>3-/4-</sup> solution. All electrochemical experiments were carried out at room temperature ( $25 \pm 3 \text{ }^\circ\text{C}$ ).

Morphological characterizations of the synthesized AuNP-cys dispersion and GPE before and after superficial functionalization with AuNP-cys/ACE2/BSA were performed using SEM images acquired using a JEOL 7500F HRSEM from the Singh Center for Nanotechnology (University of Pennsylvania). SEM images were recorded with 15,000 to 150,000 $\times$  magnifications, acceleration voltage of 5 kV, and using SEI mode. The spectrophotometry analysis was performed using a PerkinElmer Multimode Plate Reader spectrophotometer (model En-Vision). The absorbance of AuNP-cys dispersion was measured at 532 nm (at room temperature) over 7 d to evaluate its stability. FTIR spectra were obtained for GPE/AuNP-cys and GPE/AuNP-cys/ACE2 samples in a PerkinElmer Spectrum 2 equipped with a Diamond UATR 2 detector ranging from 500 cm<sup>-1</sup> to 4,500 cm<sup>-1</sup> and 32 scans were performed for each measurement.

**Synthesis of AuNPs.** The AuNPs-cys were prepared according to methodologies described in the literature (42, 43). First, 100  $\mu\text{L}$  of cys ( $213.0 \text{ mmol}\cdot\text{L}^{-1}$ ) was dropped into  $1.5 \text{ mmol}\cdot\text{L}^{-1}$   $\text{HAuCl}_4$  in a final volume of 10.0 mL, under vigorous stirring for 20 min at room temperature. Subsequently, 10.0  $\mu\text{L}$  of  $\text{NaBH}_4$  ( $10.0 \text{ mmol}\cdot\text{L}^{-1}$ ) was added and kept under stirring for 20 min in a light-protected environment at room temperature. The resulting yellow color changed to wine red as a consequence of the formation of AuNPs. Finally, the solution was stored at 4 °C in a refrigerator for up to 7 d, conditions at which it presents high stability when stored in the absence of light (SI Appendix, Fig. S1) (42, 44).

The cys presents an amine group ( $-\text{NH}_3^+$ ) and a mercaptan group ( $-\text{SH}$ ) in its extremities, the latter of which favorably binds onto the AuNPs surface through an Au-S bond. Thus, cys serves to provide greater stability to the AuNPs due to the electrostatic repulsion process among the amine groups, which generates free positive charges (26, 43, 45).

**Modification of Graphite Lead Electrodes.** The WE was polished with 2,000-grit sandpaper, and a contact area of 1.0-cm length by 0.7-mm diameter was obtained. Next, the GPE was kept immersed in a 25.0% (vol/vol) glutaraldehyde solution for 1.0 h as a first modification step. This process allowed the graphite surface to be functionalized with aldehyde groups. Then, the modified graphite substrate was kept in a AuNPs-cys solution with protonated amine groups from cys at pH 7.4, which enabled covalent anchoring of the AuNPs to the substrate by the formation of an amide bond (26). The AuNPs-cys presented a maximum adsorption time of 75 min and, after 100 min, the AuNPs-cys presented low adsorption to the substrate, and its color gradually faded (SI Appendix, Fig. S2).

Subsequently, the solution containing 50 mmol·L<sup>-1</sup> EDC, 25 mmol·L<sup>-1</sup> NHS, and 10  $\mu\text{g}\cdot\text{mL}^{-1}$  of ACE2 diluted in 0.1 mol·L<sup>-1</sup> PBS (pH = 7.4) was incubated on the substrate containing GPE/GA/AuNPs-cys. After 30 min, the ACE2 immobilized onto the substrate reached the anchoring stability and provided a highly sensitive SWV response. In the presence of EDC and NHS, the carboxyl group of ACE2 bound to the primary amine of cys through a covalent bond. The reaction between carboxyl groups and EDC-NHS resulted in the formation of a stable ester, which undergoes nucleophilic substitution with the amine groups present on the substrate surface (AuNPs-Cys), resulting in the formation of an amide bond between the modified GPE/GA/AuNPs-cys surface and ACE2. In the final step, nonspecific sites present within the electrode surface were blocked by incubation in a 1% (mass/vol) BSA solution for 30 min. Fig. 1 illustrates the simplified process for modifying LEAD (32, 46).

**COVID-19 Sensing Using LEAD.** For diagnosing SARS-CoV-2, a volume of 50  $\mu\text{L}$  of VTM or a 0.1  $\text{mol}\cdot\text{L}^{-1}$  PBS sample containing SP was applied to the WE using a plastic vial and incubated for 5 min. After the incubation period, the WE was gently washed with 0.1  $\text{mol}\cdot\text{L}^{-1}$  phosphate buffer solution (pH = 7.4) to remove unbound virus or sample. Next, the electrodes were stored in a 2.0-mL cryogenic vial for subsequent electrochemical detection. One milliliter redox probe solution (5.0  $\text{mmol}\cdot\text{L}^{-1}$   $[\text{Fe}(\text{CN})_6]^{3-/4-}$  in 0.1  $\text{mol}\cdot\text{L}^{-1}$  KCl) was used for the voltammetric measurements and to detect the current suppression due to binding of SARS-CoV-2 SP to the biosensor. Subsequently, the electrochemical response was monitored using the SWV technique. Notably, this procedure was applied to other studies such as cross-reactivity, reproducibility, incubation time, and SARS-CoV-2 detection in clinical samples. The total diagnostic time was calculated to be 6.5 min considering the sample incubation period (5 min), the time required to record two SWVs (before and after sample incubation, 1 min), and the washing step after sample incubation (30 s).

**Reproducibility, Stability, and Cross-Reactivity Studies.** The reproducibility study was performed by recording the analytical signal (current suppression of the redox probe) obtained for six different sensors (from different batches) after incubation with 1  $\text{pg}\cdot\text{mL}^{-1}$  SP solution. The stability of LEAD was evaluated by the analytical sensitivity value extracted from analytical curves in a concentration range from  $1 \times 10^{-12}$  to  $1 \times 10^{-10}$   $\text{g}\cdot\text{mL}^{-1}$  of SP in different conditions 25  $^{\circ}\text{C}$ , -20  $^{\circ}\text{C}$ , stored dry at 4  $^{\circ}\text{C}$ , and stored at 4  $^{\circ}\text{C}$  in PBS medium (pH = 7.4) over 7 d. All modified electrodes were stored inside capped plastic vials during the stability study.

The specificity studies were carried out using the following different viruses: MHV at  $10^8$  PFU $\cdot\text{mL}^{-1}$  (coronavirus); H<sub>1</sub>N<sub>1</sub>, A/California/2009; Influenza B, B/Colorado; and HSV2, herpes simplex virus-2 (all at  $10^5$  PFU $\cdot\text{mL}^{-1}$ ). The highly contagious SARS-CoV-2 B.1.1.7 UK variant was used to assess the capability of LEAD to detect SARS-CoV-2 variants.

**Clinical Sample Analyses.** The clinical performance of LEAD was assessed using clinical samples acquired from the Hospital of the University of Pennsylvania and deidentified prior to use. We set a current suppression ( $\Delta I$ ) cutoff value higher than 10  $\mu\text{A}$  for diagnostic purposes in accordance with the analytical response obtained for the lowest concentration of SP detected ( $10^{-14}$   $\text{g}\cdot\text{mL}^{-1}$ ) in the dose-response curve (Fig. 4C), i.e., samples that exhibited  $\Delta I > 10 \mu\text{A}$  were deemed positive for SARS-CoV-2 infection. One hundred and three NP/OP swab samples in VTM were obtained from patients and heat-inactivated (50 negatives and 53 positives). We also used 10 saliva samples (3 positives and 7 negatives). All samples were analyzed and the results obtained were compared to those from RT-PCR (SI Appendix, Tables S2 and S3). The Ct values obtained by RT-PCR for the clinical samples ranged from 21.5 to 34.3.

**Data Availability.** All study data are included in the article and/or SI Appendix.

**ACKNOWLEDGMENTS.** C.d.I.F.-N. holds a Presidential Professorship at the University of Pennsylvania, is a recipient of the Langer Prize by the AICHE Foundation, and acknowledges funding from the Institute for Diabetes, Obesity, and Metabolism, the Penn Mental Health AIDS Research Center of the University of Pennsylvania, the National Institute of General Medical Sciences of the NIH under award R35GM138201, and the Defense Threat Reduction Agency (HDTRA11810041 and HDTRA1-21-1-0014). Research reported in this publication was supported by the Nemirovsky Prize and by funds provided by the Dean's Innovation Fund from the Perelman School of Medicine at the University of Pennsylvania (to C.d.I.F.-N.). W.R.d.A. acknowledges funding from Brazilian funding agencies CAPES (88887.479793/2020-00), FAPESP (2018/08782-1), FAEPEX/PRP/UNICAMP (3374/19), and CNPq (438828/2018-6 and 401256/2020-0) for supporting the research. All figures were prepared using the Biorender drawing toolkit. We thank Jonathan A. Epstein for his support. We also thank Scott Hensley, Sara Cherry, Susan Weiss, Ronald Collman, Michael Feldman, Benjamin Abella, and Paul Callahan for donating samples and Gary Molander and Viktor Polites for sharing their FTIR equipment.

- D. S. Hui *et al.*, The continuing 2019-nCoV epidemic threat of novel coronaviruses to global health - The latest 2019 novel coronavirus outbreak in Wuhan, China. *Int. J. Infect. Dis.* **91**, 264–266 (2020).
- J. T. Wu, K. Leung, G. M. Leung, Nowcasting and forecasting the potential domestic and international spread of the 2019-nCoV outbreak originating in Wuhan, China: A modeling study. *Obstet. Gynecol. Surv.* **75**, 399–400 (2020).
- B. Hu, H. Guo, P. Zhou, Z. L. Shi, Characteristics of SARS-CoV-2 and COVID-19. *Nat. Rev. Microbiol.* **19**, 141–154 (2020).
- N. Amin, A. S. Torralba, R. Álvarez-Diduk, A. Afkhami, A. Merkoçi, Lab in a tube: Point-of-care detection of *Escherichia coli*. *Anal. Chem.* **92**, 4209–4216 (2020).
- A. Yakoh *et al.*, Paper-based electrochemical biosensor for diagnosing COVID-19: Detection of SARS-CoV-2 antibodies and antigen. *Biosens. Bioelectron.* **176**, 112912 (2021).
- S. Eissa, M. Zourob, Development of a low-cost cotton-tipped electrochemical immunosensor for the detection of SARS-CoV-2. *Anal. Chem.* **93**, 1826–1833 (2021).
- G. Seo *et al.*, Rapid detection of COVID-19 causative virus (SARS-CoV-2) in human nasopharyngeal swab specimens using field-effect transistor-based biosensor. *ACS Nano* **14**, 5135–5142 (2020).
- H. Zhao *et al.*, Ultrasensitive supersandwich-type electrochemical sensor for SARS-CoV-2 from the infected COVID-19 patients using a smartphone. *Sens. Actuators B Chem.* **327**, 128899 (2021).
- J. Cheong *et al.*, Fast detection of SARS-CoV-2 RNA via the integration of plasmonic thermocycling and fluorescence detection in a portable device. *Nat. Biomed. Eng.* **4**, 1159–1167 (2020).
- A. Ganguli *et al.*, Rapid isothermal amplification and portable detection system for SARS-CoV-2. *Proc. Natl. Acad. Sci. U.S.A.* **117**, 22727–22735 (2020).
- M. D. T. Torres, W. R. De Araujo, L. F. de Lima, A. L. Ferreira, C. de la Fuente-Nunez, Low-cost biosensor for rapid detection of SARS-CoV-2 at the point of care. *Matter*, 10.1016/j.matt.2021.05.003 (2021).
- V. Gubala, L. F. Harris, A. J. Ricco, M. X. Tan, D. E. Williams, Point of care diagnostics: Status and future. *Anal. Chem.* **84**, 487–515 (2012).
- P. K. Drain *et al.*, Diagnostic point-of-care tests in resource-limited settings. *Lancet Infect. Dis.* **14**, 239–249 (2014).
- Y. Song *et al.*, Multiplexed volumetric bar-chart chip for point-of-care diagnostics. *Nat. Commun.* **3**, 1283 (2012).
- R. F. e Silva, T. R. Longo Cesar Paixão, M. Der Torossian Torres, W. R. de Araujo, Simple and inexpensive electrochemical paper-based analytical device for sensitive detection of *Pseudomonas aeruginosa*. *Sens. Actuators B Chem.* **308**, 127669 (2020).
- R. Yan, Y. Zhang, Y. Guo, L. Xia, Q. Zhou, Structural basis for the recognition of the 2019-nCoV by human ACE2. *Science* **2762**, 1–10 (2020).
- J. Yang *et al.*, Molecular interaction and inhibition of SARS-CoV-2 binding to the ACE2 receptor. *Nat. Commun.* **11**, 4541 (2020).
- K. G. Andersen, A. Rambaut, W. I. Lipkin, E. C. Holmes, R. F. Garry, The proximal origin of SARS-CoV-2. *Nat. Med.* **26**, 450–452 (2020).
- J. Pang *et al.*, Potential rapid diagnostics, vaccine and therapeutics for 2019 novel coronavirus (2019-nCoV): A systematic review. *J. Clin. Med.* **9**, 623 (2020).
- O. Barbosa *et al.*, Glutaraldehyde in bio-catalysts design: A useful crosslinker and a versatile tool in enzyme immobilization. *RSC Advances* **4**, 1583–1600 (2014).
- I. Migneault, C. Dartiguenave, M. J. Bertrand, K. C. Waldron, Glutaraldehyde: Behavior in aqueous solution, reaction with proteins, and application to enzyme crosslinking. *Biotechniques* **37**, 790–796, 798–802 (2004).
- A. L. Ferreira *et al.*, Development of a novel biosensor for creatine kinase (CK-MB) using surface plasmon resonance (SPR). *Appl. Surf. Sci.* **554**, 149565 (2021).
- A. R. Pereira, G. C. Sedenho, J. C. P. Souza, F. N. Crespilho, Advances in enzyme bio-electrochemistry. *An. Acad. Bras. Cienc.* **90**(suppl. 1), 825–857 (2018).
- T. Q. Huy *et al.*, Characterization of immobilization methods of antiviral antibodies in serum for electrochemical biosensors. *Appl. Surf. Sci.* **257**, 7090–7095 (2011).
- Q. Wang, B. Zhang, X. Lin, W. Weng, Hybridization biosensor based on the covalent immobilization of probe DNA on chitosan-mutualwalled carbon nanotubes nanocomposite by using glutaraldehyde as an arm linker. *Sens. Actuators B Chem.* **156**, 599–605 (2011).
- M. R. Farmani, H. Peyman, H. Roshanfekar, Blue luminescent graphene quantum dot conjugated cysteamine functionalized-gold nanoparticles (GQD-AuNPs) for sensing hazardous dye Erythrosine B. *Spectrochim. Acta - Part A Mol. Biomol. Spectrosc.* **229**, 117960 (2020).
- T. C. Tsai *et al.*, In situ study of EDC/NHS immobilization on gold surface based on attenuated total reflection surface-enhanced infrared absorption spectroscopy (ATR-SEIRAS). *Colloids Surf. B Biointerfaces* **175**, 300–305 (2019).
- J. H. Shim, J. Kim, C. Lee, Y. Lee, Electrocatalytic activity of gold and gold nanoparticles improved by electrochemical pretreatment. *J. Phys. Chem. C* **115**, 305–309 (2011).
- J. Das, H. Yang, Enhancement of electrocatalytic activity of DNA-conjugated gold nanoparticles and its application to DNA detection. *J. Phys. Chem. C* **113**, 6093–6099 (2009).
- T. Geng, Z. Song, J. Zhang, Z. Xu, Creatine kinase determination based on an electrochemical impedance immunosensor. *Int. J. Electrochem. Sci.* **12**, 8552–8563 (2017).
- A. J. Bard, L. R. Faulkner, *Electrochemical Methods: Fundamentals and Applications* (Wiley, ed. 2, 2001).
- F. T. C. Moreira, R. A. F. Dutra, J. P. Noronha, M. G. F. Sales, Novel sensory surface for creatine kinase electrochemical detection. *Biosens. Bioelectron.* **56**, 217–222 (2014).
- A. Ali, R. Vijayan, Dynamics of the ACE2-SARS-CoV-2/SARS-CoV spike protein interface reveal unique mechanisms. *Sci. Rep.* **10**, 14214 (2020).
- C. A. Holstein, M. Griffin, J. Hong, P. D. Sampson, Statistical method for determining and comparing limits of detection of bioassays. *Anal. Chem.* **87**, 9795–9801 (2015).
- J. W. A. Findlay, R. F. Dillard, Appropriate calibration curve fitting in ligand binding assays. *AAAPS J.* **9**, E260–E267 (2007).
- P. G. Gottschalk, J. R. Dunn, The five-parameter logistic: A characterization and comparison with the four-parameter logistic. *Anal. Biochem.* **343**, 54–65 (2005).
- Y. Fong, J. Wakefield, S. De Rosa, N. Frahm, A robust Bayesian random effects model for nonlinear calibration problems. *Biometrics* **68**, 1103–1112 (2012).
- K. Uhteg *et al.*, Comparing the analytical performance of three SARS-CoV-2 molecular diagnostic assays. *J. Clin. Virol.* **127**, 104384 (2020).



39. S. N. Rao, D. Manissero, V. R. Steele, J. Pareja, A systematic review of the clinical utility of cycle threshold values in the context of COVID-19. *Infect. Dis. Ther.* **9**, 573–586 (2020).
40. B. O. Villoutreix, V. Calvez, A. G. Marcelin, A. M. Khatib, In silico investigation of the new UK (B.1.1.7) and South African (501y.v2) SARS-CoV-2 variants with a focus at the ace2–spike RBD interface. *Int. J. Mol. Sci.* **22**, 1–13 (2021).
41. M. Ramanathan, I. D. Ferguson, W. Miao, P. A. Khavari, SARS-CoV-2 B.1.1.7 and B.1.351 Spike variants bind human ACE2 with increased affinity. *bioRxiv* [Preprint] (2021). <https://doi.org/10.1101/2021.02.22.432359> (Accessed 13 April 2021).
42. A. K. Sharma, S. Pandey, Y. Nerthigan, N. Swaminathan, H. F. Wu, Aggregation of cysteamine-capped gold nanoparticles in presence of ATP as an analytical tool for rapid detection of creatine kinase (CK-MM). *Anal. Chim. Acta* **1024**, 161–168 (2018).
43. A. Asadzadeh-Firouzabadi, H. R. Zare, Application of cysteamine-capped gold nanoparticles for early detection of lung cancer-specific miRNA (miR-25) in human blood plasma. *Anal. Methods* **9**, 3852–3861 (2017).
44. W. S. Alencar *et al.*, Synergistic interaction between gold nanoparticles and nickel phthalocyanine in layer-by-layer (LbL) films: evidence of constitutional dynamic chemistry (CDC). *Phys. Chem. Chem. Phys.* **11**, 5086–5091 (2009).
45. X. Liang *et al.*, Colorimetric detection of melamine in complex matrices based on cysteamine-modified gold nanoparticles. *Analyst (Lond.)* **136**, 179–183 (2011).
46. F. Garay, G. Kisiel, A. Fang, E. Lindner, Surface plasmon resonance aided electrochemical immunosensor for CK-MB determination in undiluted serum samples. *Anal. Bioanal. Chem.* **397**, 1873–1881 (2010).
47. R. Service, Coronavirus antigen tests: Quick and cheap, but too often wrong? *Science*, 10.1126/science.abc9586 (2020).