

Evaluation of the Diagnostic and Prognostic Value of CSF Presepsin Levels in Patients with Postneurosurgical Ventriculitis/Meningitis

Guanghui Zheng^{1-3,*}
Chenxi Zhang^{1-3,*}
Guojun Zhang¹⁻³
Chunqing Shao¹⁻³

¹Department of Clinical Diagnosis, Laboratory of Beijing Tiantan Hospital and Capital Medical University, Beijing, People's Republic of China; ²NMPA Key Laboratory for Quality Control of in vitro Diagnostics, National Medical Products Administration, Beijing, People's Republic of China; ³Beijing Engineering Research Center of Immunological Reagents Clinical Research, Beijing Municipal Science and Technology Commission, Beijing, People's Republic of China

*These authors contributed equally to this work

Aim: To evaluate the diagnostic and prognostic value of CSF presepsin levels in patients with postneurosurgical ventriculitis/meningitis (PNVM).

Methods: We conducted a case-control study to achieve our aims. First, we prospectively enrolled patients who had undergone neurosurgery in Beijing Tiantan Hospital from June to November 2020 and measured the CSF levels of 8 biomarkers, including presepsin and other meningitis biomarkers. The diagnostic and prognostic accuracies of presepsin levels were evaluated by determining the values for the area under the receiver operating characteristic curve (AUC).

Results: Two hundred thirty-nine patients were enrolled in this study; 34 were diagnosed with confirmed ventriculitis/meningitis (cVM), 138 were classified as probable ventriculitis/meningitis (pVM), and the others were rejected ventriculitis/meningitis (rVM). Presepsin levels effectively diagnose cVM and predict the outcomes of patients with PNVM, with thresholds of 1257.4 pg/mL and 1276.2 pg/mL and AUCs of 0.746 and 0.825, respectively. Furthermore, a joint analysis with CSF lactate (C-Lac) levels shows that the AUCs of the two markers increased to 0.856 and 0.872, respectively.

Conclusion: The rapid diagnosis and prediction of the clinical outcome is important in neurosurgery. CSF presepsin levels are an impressive diagnostic and prognostic biomarker for meningitis, and when combined with C-Lac, they indeed improve the diagnostic and predictive efficiency of PNVM.

Keywords: presepsin, cerebrospinal fluid, postneurosurgical ventriculitis/meningitis

Introduction

Postneurosurgical ventriculitis/meningitis (PNVM) is one of the most serious and fatal infectious-related diseases worldwide and occurs after craniotomy, craniectomy, or following the insertion of internal or external ventricular and lumbar catheters.¹ Patients with PNVM always experience serious complications associated with severe neurological sequelae, high mortality rates, a prolonged hospital stay, and high costs.^{2,3} The morbidity rate of PNVM varies in different papers, ranging from 1.5% to 25%,⁴ but it can lead to a mortality rate of up to 35%. Ideal PNVM treatment requires an accurate and early diagnosis and treatment.

PNVM has been divided into confirmed ventriculitis/meningitis (cVM) (with evidence of pathogens) and probable ventriculitis/meningitis (pVM) (without evidence of pathogens) in clinical practice.⁵ Since these patients present similar clinical symptoms, such as headache and fever, no distinction is made in most of

Correspondence: Chunqing Shao; Guojun Zhang
Tel +86 18600148997; +86 15811219411
Email shaocq0210@163.com;
zgjlunwen@163.com

the clinical treatments. However, for patients with cVM, the use of antibiotics is crucial, and early antibiotic treatment can improve the prognosis and shorten the patient's hospital stay.⁶ Nevertheless, the inflammatory syndrome response of patients with pVM, which is always caused by the detachment of tumor cells or the displacement of broken bones during the neurosurgical operation that does not require antibiotic treatment, and the excessive use of antibiotics may lead to dysbacteriosis in the patient. Therefore, discriminate the cVM and pVM is of great significance in clinical neurosurgical treatment, and in addition, antibiotic abuse may lead to the emergence of multidrug-resistant (MDR) bacteria and cause secondary central nervous system (CNS) infections.

The discrepancy between cVM and pVM is mainly due to the presence of pathogenic evidence, and pathogenic evidence is also the gold standard for the diagnosis of PNVM. However, a low positive rate of microbial culture, long-term culture, and a certain probability of contamination substantially affect the effective diagnosis of PNVM.⁷ Therefore, biomarkers are very important for the diagnosis of PNVM; however, conventional biomarkers such as the cerebrospinal fluid (CSF) leukocyte count (C-Leu), CSF protein concentration (C-Pro), and C-reactive protein (CRP) concentration possess low sensitivity and specificity, which block precise diagnosis and prognostic prediction in clinical treatment.^{8,9} Therefore, the development and evaluation of new biomarkers is very important in the diagnosis of PNVM.

As a new type of marker, sCD14 (presepsin) has received extensive clinical and laboratory attention.^{10,11} It is a truncated subtype of soluble CD14 composed of 64 amino acids and induces the differentiation of activated macrophages in response to membrane-bound protein soluble fragment of 14 (CD14) expressed by bacterial lipopolysaccharides.¹² CD14 is a coreceptor of Toll-like receptor 4 (TLR4) that binds the lipopolysaccharide (LPS)-lipopolysaccharide binding protein (LBP) complex, thereby promoting LPS-induced TLR4 activation.¹³ When metalloprotease is shed from the cell surface, the CD14-LPS-LBP complex is released into body fluids, and the protease further cleaves this complex. Since it originated from bacterial pattern recognition, the level of free anti-septic protein in body fluids is considered a diagnostic biomarker of infection. Plasma presepsin levels are significantly increased in patients with sepsis, and its concentration is directly proportional to the severity of sepsis,¹⁴ with a high diagnostic sensitivity and specificity. At

present, several studies have indicated that presepsin also exists in CSF^{15,16} and can be applied in the diagnosis of children with bacterial meningitis, but its ability to differentially diagnose clinical cVM and pVM has not been reported. Therefore, this study first established a baseline presepsin level in the CSF of patients who underwent neurosurgery and evaluated the discriminative value in the diagnosis of cVM and pVM. Afterwards, the prognostic ability of CSF presepsin levels was also evaluated.

Study Design

This prospective observational study was conducted in Beijing Tiantan Hospital from June–November 2020, and the study was approved by the ethics committee of Beijing Tiantan Hospital (NO: KY-2019-095-03), and this study was conducted in accordance with the Declaration of Helsinki, and participants or their relatives provided written informed consent. This study had three objectives. First, the baseline CSF presepsin concentration was measured in patients after neurosurgery. Second, the diagnostic ability of CSF presepsin levels in patients with PNVM was evaluated. Third, the prognostic ability of presepsin levels in patients with PNVM was explored.

Twelve clinical variables were extracted from the medical records of these patients in the database, including age (years), male sex (%), site of surgery (head or spine), surgical wound classification (I or II), extraventricular drainage (EVD), lumbar drainage (LD), assisted mechanical ventilation (AMV), CSF leakage, craniotomy, Intensive care unit (ICU) admission, malignancy, and clinical outcomes. Eight clinical laboratory variables were extracted, including presepsin levels, C-Leu levels, CSF chloride ion concentration (C-Cl), CSF glucose concentration (C-Glu), CSF lactate (C-Lac) levels, CSF neutrophil ratio (C-Neu), C-Pro levels, and CRP levels. All clinical laboratory analyses were performed according to the manufacturer's instructions.

Inclusion and Exclusion Criteria

All patients who underwent neurosurgery were enrolled during the study period. Patients who were 18 years old and survived for at least 7 days after neurosurgery were eligible; neurosurgery included craniotomy, transsphenoidal surgery, spine surgery, etc. Because presepsin in the blood may affect the diagnostic experiment, patients with subarachnoid hemorrhage were excluded. Patients who had only intubation, drainage, and incomplete medical records were excluded.

The study used the method reported in the literature to divide the patients into three groups.^{4,5} 1) Rejected ventriculitis/meningitis (rVM): patients who underwent neurosurgery with a negative CNS culture and a CSF leukocyte count <250 cells/L with <50% neutrophils. 2) cVM: patients who underwent neurosurgery with a positive CSF culture and a CSF leukocyte count > 250 cells/L. 3) pVM: patients who underwent neurosurgery with a CSF leukocyte count > 1000 cells/L with > 50% neutrophils or a count > 250 cells/L with > 50% neutrophils (if the patient had a history of steroid and/or antibiotic use at the time of the lumbar puncture). Patients with micrococcus, *Corynebacterium* and *Propionibacterium* infections were excluded.

Statistical Analysis

Continuous variables are presented as the means \pm SD or medians (25%, 75%), which depends on whether the data conformed to a normal distribution. The Shapiro–Wilk method was employed to test for a normal distribution, and ANOVA, the Mann–Whitney *U*-test and Student's *t* test were applied as the statistical methods to evaluate the significance of differences in the variables. Categorical data are presented as numbers and percentages, and the chi-square test or Fisher's exact test was performed as the statistical method. The diagnostic and prognostic ability of biomarkers of PNVM was evaluated using the Mann–Whitney *U*-test. $P < 0.05$ indicates that the difference is statistically significant. For the diagnostic and prognostic evaluations, the threshold, specificity, and sensitivity of CSF presepsin levels in the two groups were assessed by constructing receiver operating characteristic (ROC) curves. All statistical analyses were performed using

SPSS 20.0 software (IBM, New York, USA), and all figures were generated using Prism 7.0 software (GraphPad, San Diego, CA, USA).

Results

Patients

A total of 4665 neurosurgical patients were enrolled in this study, of whom 211 had meningitis syndrome. Of these patients, 18 had only CSF shunting, 7 were hospitalized for less than 7 days, 5 had anti-infective operations that were not performed in this hospital, and 9 had incomplete medical records. Of the remaining 172 patients, 34 were diagnosed with cVM and 138 were diagnosed with pVM; meanwhile, 63 patients with rVM were randomly selected according to the exclusion criteria. The clinical characteristics of the patients are shown in Table 1. Body temperature, AMV, craniotomy, EVD, mortality, and reoperation showed statistically significant differences among the three groups.

Among the 34 patients cVM, 17 patients had gram-positive bacterial cVM and 17 patients had gram-negative bacterial cVM. *Staphylococcus epidermidis* (9, 26.5%) and *Klebsiella pneumoniae* (7, 20.6%) occupied the highest proportions, and the distributions of pathogens are shown in Table 2.

Baseline Presepsin Levels in Neurosurgical Patients

The median age of the 63 patients with rVM was 49 years, and the proportion of females was higher than that of males (52.4% vs 47.6%). The average CSF presepsin concentration was 348.3 ± 97.2 pg/mL.

Table 1 Clinical Characteristics of cVM, pVM and rVM Patients

Parameter	cVM(34)	pVM(138)	rVM(63)	P
Age	48(31, 63)	47(32, 55)	49.0(34.0, 59.0)	0.633
Gender (male)	20(58.8%)	74(53.6%)	33(52.4%)	0.822
Body temperature(°C)	37.0(36.5, 38.2)	36.8(36.4, 37.8)	36.5(36.4, 36.6)	<0.001
AMV	6(17.6%)	8(5.8%)	10(15.9%)	0.028
Craniotomy	26(76.5%)	108(80.6%)	35(55.6%)	0.046
CSF leakage	7(20.6%)	13(9.4%)	6(9.5%)	0.122
EVD	14(41.2%)	26(18.8%)	11(17.5%)	0.012
ICU admission	21(61.8%)	58(42.0%)	25(39.7%)	0.081
LD	11(32.4%)	39(28.3%)	15(23.8%)	0.649
Malignant tumor	18(52.9%)	56(40.6%)	25(39.7%)	0.383
Mortality	10(29.4%)	5(3.6%)	0(0%)	<0.001
Reoperation	17(50%)	16(11.6%)	6(9.5%)	<0.001
Type of the surgery	23(67.6%)	102(73.9%)	49(77.7%)	0.554

Table 2 Distribution of Pathogens of cVM

Group	Isolates	Numbers (34)	Percentage (100%)
Gram positive bacterial cVM	<i>Enterococcus faecalis</i>	2	5.9%
	<i>Enterococcus faecium</i>	1	2.9%
	<i>Staphylococcus aureus</i>	4	11.8%
	<i>Staphylococcus epidermidis</i>	9	26.5%
	<i>Staphylococcus hominis</i>	1	2.9%
Gram Negative bacterial cVM	<i>Acinetobacter baumannii</i>	3	8.8%
	<i>Acinetobacter junii</i>	1	2.9%
	<i>Chryseobacterium indolegenes</i>	1	2.9%
	<i>Klebsiella pneumoniae</i>	7	20.6%
	<i>Proteus mirabilis</i>	1	2.9%
	<i>Stenotrophomonas maltophilia</i>	4	11.8%

Diagnostic Ability of Presepsin and C-Lac Levels

Table 3 shows the blood- and CSF-related biomarkers in patients with cVM and pVM. Significant differences in multiple biomarkers, such as presepsin, C-Leu, C-Lac, C-Pro, Leu, LY%, and Neu%, were observed between patients with cVM and patients with pVM. The CSF presepsin concentration in patients with cVM was significantly higher than that of patients with pVM (1462.2±353.9 pg/mL vs 1203.8±380.8 pg/mL $P<0.001$). The ROC curve analysis showed that for the differential diagnosis of cVM and pVM, the best threshold value was 1257.5 pg/mL, and the area under the curve (AUC) of presepsin levels was 0.725, with a sensitivity and NPV of 88.2% and 83.9%, respectively. As shown in Table 3, C-Lac levels also had a good diagnostic ability (AUC=0.808). The diagnosis based on the combination of presepsin and C-Lac levels showed an effective improvement of the discriminate diagnostic efficiency of cVM and pVM (AUC=0.856), and the sensitivity and specificity were 82.8% and 73.5%, respectively. Other ROC parameters are shown in Table 4 and Figure 1.

In addition, 34 patients with cVM were grouped into infections with gram-negative and gram-positive bacteria. The presepsin concentration in the gram-positive bacteria group was higher than that in the gram-negative bacteria group (1526.5±405.6 pg/mL vs 1464.2±312.1 pg/mL); however, the difference between the two groups was not significant ($P=0.358$).

Prognostic Ability of Presepsin and C-Lac Levels

In this study, 15 patients had a poor prognosis (nonsurvived group) due to PNVM, and the other 157 patients were successfully cured (survived). Among them, clinical biomarkers, including presepsin, are shown in Table 5. The concentration of presepsin in the surviving group was 1224.2±381.2 pg/mL, and the presepsin concentration in the nonsurviving group was 1642.8±286.2 pg/mL. The univariate analysis showed that presepsin and C-Lac levels were significantly different in the two groups (Table 5).

The multivariate regression analysis showed that presepsin and C-Lac levels are potentially useful as

Table 3 Clinical Laboratory Parameters of cVM, pVM and rVM Patients

Parameter	cVM(34)	pVM(138)	P
C-Leu (10^6 /L)	2489.0 (912.3, 1143.5)	2291.0(740.0, 4183.8)	0.117
C-Cl (mmol/L)	119.3±10.4	120.2±6.5	0.978
C-Glu (mmol/L)	1.8±2.0	2.8±1.2	0.005
C-Lac(mg/dl)	10.1±4.4	6.0±1.8	<0.001
C-Neu(%)	81.6±20.6	81.1±16.2	0.144
C-Pro (g/L)	255.4(160.9, 422.6)	159.8(117.3, 209.5)	0.001
CRP (mg/L)	66.2(24.3, 115.5)	26.4(10.2, 50.1)	0.020
Presepsin(pg/mL)	1462.2±353.9	1203.8±380.8	<0.001

Table 4 ROC Parameters of the Discrimination of cVM and pVM Patients

Parameters	AUC	Threshold	SEN	SEP	PPV	NPV	PLR	NLR	Youden Index
C-Lac	0.808	7.8 mg/dl	61.8%	91.2%	87.5%	70.5%	7.023	0.419	0.519
Presepsin	0.746	1257.4 pg/mL	88.2%	61.6%	69.7%	83.9%	2.297	0.192	0.498
C-Pro	0.693	248.6 g/L	55.9%	84.4%	78.2%	65.7%	3.583	0.523	0.403
CRP	0.679	39.7 mg/L	68.4%	70.2%	69.7%	69.0%	2.295	0.450	0.386
C-Glu	0.657	0.9 mmol/L	94.3%	52.9%	66.7%	90.3%	2.002	0.108	0.472
Fitted variable	0.856	0.786	82.8%	73.5%	75.8%	81.0%	3.125	0.234	0.563

Abbreviations: SEN, sensitivity; SEP, specificity; PPV, positive predictive value; NPV, negative predictive value; PLR, positive likelihood ratio; NLR, negative likelihood ratio.

independent predictors of a poor prognosis (Table 5), with the best threshold values being 1276.2 pg/mL and 12.2 mmol/l, respectively. The diagnosis based on the combination of presepsin and C-Lac levels indeed showed an improved diagnostic efficiency, with an AUC=0.872 and a sensitivity as high as 100.0%, suggesting that these parameters predict the clinical outcome of meningitis. Other ROC curve parameters are shown in Table 6 and Figure 2.

Discussion

PNVM is a complication of neurosurgery that has become a social problem and has a very important clinical status. The diagnosis of PNVM in patients who underwent neurosurgery is frequently presumptive because of the low diagnostic sensitivity and specificity of conventional biomarkers.¹⁷ Different types of PNVM require different treatment procedures, and an accurate diagnosis has strong clinical significance. In addition to the diagnosis of clinical symptoms, novel, reliable biomarkers with high sensitivity

and specificity are urgently needed to assist with the diagnosis and predict the prognosis of PNVM.

In this prospective study, we concluded that presepsin is a biomarker with diagnostic and prognostic abilities for PNVM. The CSF concentration of presepsin in patients with PNVM increased significantly compared with that in patients with rVM, and the average CSF presepsin level of 63 patients with rVM was 328.3±97.2 pg/mL. In contrast, presepsin levels were significantly elevated in the CSF of patients with cVM and pVM, and the difference between the two groups was statistically significant ($P<0.05$). The joint diagnosis based on C-Lac and presepsin levels showed that the discriminate diagnostic efficiency of cVM and pVM was effectively improved (AUC=0.856). The prognostic analysis showed a significantly higher presepsin level in patients with a poor prognosis than in patients with a good prognosis (1642.8±286.2 pg/mL vs 1224.2±381.2 pg/mL), and the best threshold value was 1276.2 pg/mL. A joint analysis of presepsin and C-Lac levels achieved a better prognostic evaluation

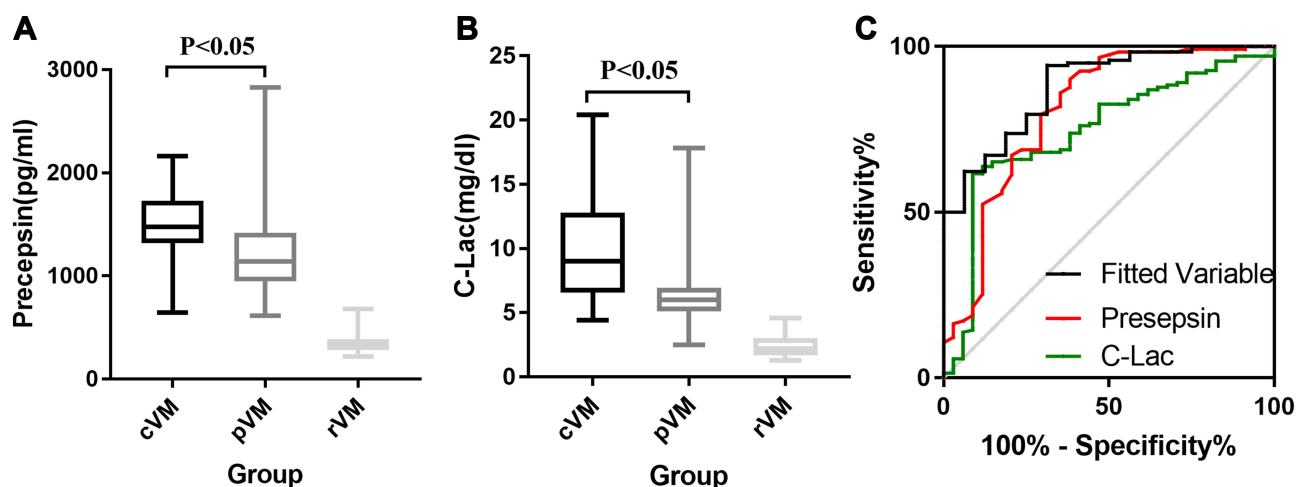


Figure 1 Concentration of CSF presepsin (A) and C-Lac (B) in cVM, pVM and rVM patients; ROC of presepsin, C-Lac and joint analysis of them in diagnosis of cVM (C).

Table 5 Clinical Laboratory Parameters of Non-Survived and Survived Patients

Parameters	Non-Survived(15)	Survived(157)	P	OR	95%C.I.	P
Presepsin(pg/mL)	1642.8±286.2	1224.2±381.2	<0.001	1.002	1.001–1.003	0.003
C-Leu($10^6/L$)	3562.0(1328.5, 8207.0)	2214.0 (782.0, 4592.0)	0.126			
C-Neu(%)	78.0±23.4	81.7±16.5	0.721			
C-Pro (g/L)	253.9(141.6, 430.8)	163.4(117.7, 227.0)	0.074			
C-Cl ⁻ (mmol/L)	122.2±11.9	117.9±6.9	0.272			
C-Glu(mmol/L)	1.7±1.4	2.3±1.4	0.166			
C-Lac(mg/dl)	10.6±4.7	6.6±2.5	<0.001	1.297	1.126–1.495	<0.001
CRP(mg/L)	79.8(44.1, 109.8)	26.7(10.7, 66.2)	0.080			

Abbreviations: OR, odds ratio; 95%C.I, 95% confidence interval.

Table 6 ROC Parameters of the Prognostic Ability of Presepsin and C-Lac

Parameter	AUC	Threshold	SEN	SEP	PPV	NPV	PLR	NLR	Youden Index
Presepsin	0.825	1276.2 pg/mL	93.3%	58.7%	69.3%	89.8%	2.259	0.114	0.520
C-Lac	0.782	12.2 mg/dl	46.7%	96.5%	93.0%	64.4%	13.343	0.552	0.431
Fitted Variable	0.872	0.0542	100.0%	67.4%	75.4%	100.0%	3.067	0.000	0.674

Abbreviations: SEN, sensitivity; SEP, specificity; PPV, positive predictive value; NPV, negative predictive value; PLR, positive likelihood ratio; NLR, negative likelihood ratio.

(AUC=0.872). To the best of our knowledge, this study is the first to perform a differential diagnostic and prognostic evaluation of presepsin levels in the CSF of patients with PNVM.

Because presepsin is produced by macrophages in the systemic circulation, it may be secreted by central neuroglia to address pathogen infection and other noxious stimuli. Different articles have reported similar but not the same CSF presepsin concentrations in people.

Abudeev reported that the range of presepsin levels in people without neurosurgery was 50–100 pg/mL,¹⁵ while the study by Carpio reported a concentration of 153 pg/mL.¹⁸ In our study, the presepsin level in patients without an infection after neurosurgery (rVM) was higher than that in people without neurosurgery.¹⁵ The potential explanation is that the patient has an inflammatory response after surgical trauma. Compared with patients without surgery, macrophages secrete

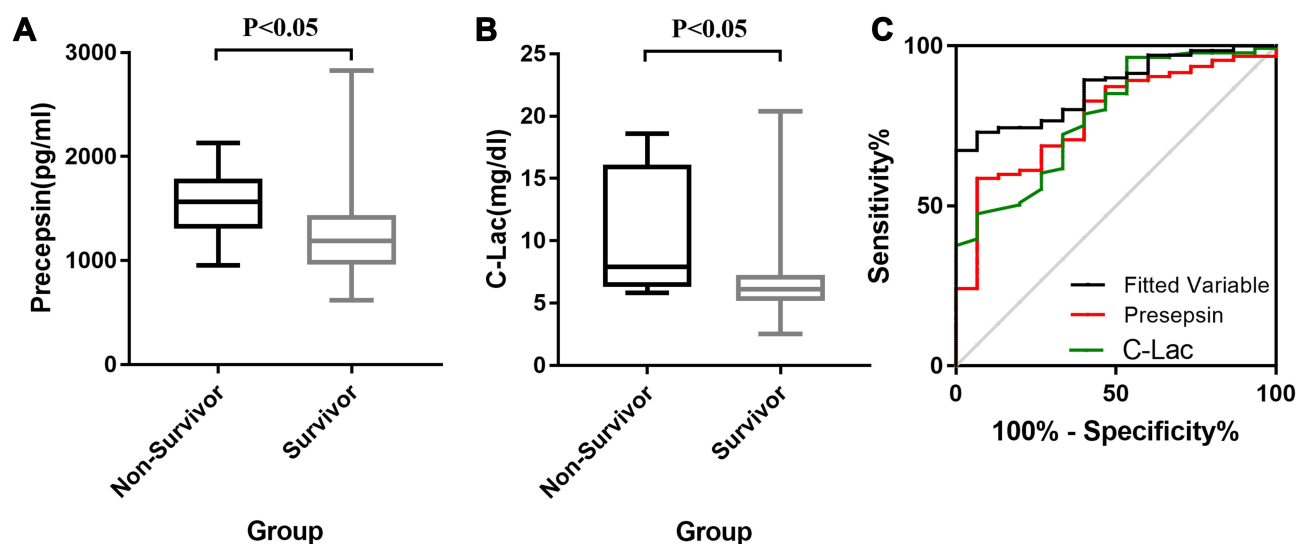


Figure 2 Concentration of CSF presepsin (A) and C-Lac (B) in non-survivor and survivor patients; ROC of presepsin, C-Lac and joint analysis of them in prognostic of PNVM (C).

presepsin, resulting in an increase in the CSF concentration.

Presepsin is mainly used as a clinical diagnostic marker for various diseases, such as infection, kidney function,¹⁹ perioperative medicine,^{20,21} and cardiac arrest. The most famous and significant usage in the clinic is the diagnosis of sepsis, as it shows a higher diagnostic value than other biomarkers. The severity of sepsis is strongly associated with presepsin concentrations and the day of measurement, whereas PCT and CRP levels are not significantly different.²²

Because serum presepsin levels can predict the severity of sepsis, we speculate that presepsin can distinguish cVM from pVM. The analysis of CSF presepsin levels in patients with cVM and pVM showed that the discrimination of the two groups was more certain if presepsin was employed. A ROC curve analysis of clinical laboratory data indicates that CSF presepsin levels have an AUC of 0.746 and a threshold value of 1257.4 pg/mL, which are better than the majority of traditional infectious biomarkers. Thus, when the patient's CSF presepsin level is higher than 1257.4 pg/mL, the patient tends to have cVM. Under normal circumstances, the severity of cVM is higher than that of pVM. Other papers indicate that presepsin levels in patients with sepsis are related to the disease severity.^{23–25} Therefore, in the diagnosis of nervous system infections, the role of CSF presepsin levels is similar to its levels in plasma. Compared with C-Lac levels, the diagnostic value of presepsin levels was slightly lower (0.746 vs 0.808), but the diagnostic sensitivity of presepsin was much higher (88.2% vs 61.8%). It can be used in a preliminary screen for the discrimination of cVM and pVM. In the joint diagnosis based on multiple indicators,²⁶ the diagnostic ability of a single marker is significantly improved. Through the joint diagnostic analysis of the two biomarkers, both the low sensitivity and specificity of C-Lac and presepsin levels can be eliminated.

Several studies have shown that some biomarkers distinguish gram-positive and gram-negative bacterial infections, for example, C-Lac levels distinguish the two groups.^{27,28} Nevertheless, the conclusion of the present study shows that presepsin does not distinguish gram-positive from gram-negative cVM ($p>0.05$). The potential explanation is that gram-positive bacteria or gram-negative bacteria stimulate macrophages to produce presepsin, and the magnitude of the response is only related to the severity of the infection in the patient, rather than the type of microorganism.

For the predictive study of the clinical outcomes of PNVM, neurosurgical patients are usually evaluated by measuring independent risk factors. According to published reports, the survival analysis of hospitalized patients with sepsis shows that presepsin can be used as an independent risk factor for death.²⁹ In contrast, few studies target the screening of predictors of PNVM, and only clinical indicators such as the GCS score predict the clinical outcomes of infected patients.³ Based on the results of the present study, presepsin is potentially useful as an independent predictor of the clinical outcomes of patients, with an AUC=0.825 and sensitivity and specificity of 93.3% and 58.7%, respectively. When combined with C-Lac levels, mortality is better predicted (AUC=0.872), and the sensitivity is as high as 100%.

Our study has a number of limitations. First, this study was conducted at a single center, and the generality of the results is slightly insufficient. Second, only 172 patients with cVM and pVM and 63 patients with rVM were enrolled in this study, which are relatively low numbers. Third, we did not evaluate presepsin levels in blood samples from patients with PNVM. Fourth, the validation experiment of the target biomarkers were not carried out, which may slightly reduce the accuracy of the experiment. In future studies, 3–5 neurosurgical centers in northern China will be included, and the validation test will be conducted to better evaluate the diagnostic and prognostic value of presepsin levels.

In summary, the average CSF presepsin concentration in patients after neurosurgery was 348.3 ± 97.2 pg/mL. CSF presepsin has the ability to differentially diagnose and predict PNVM, and when presepsin is used in combination with C-Lac, it substantially improves the diagnostic efficiency. Overall, CSF presepsin is a promising diagnostic and prognostic biomarker for meningitis and further clinical evaluations are needed.

Acknowledgment

We would like to thank Yijun Shi for helping the authors in collecting the data.

Funding

The study was funded by Beijing Municipal Administration of Hospitals (NO: QML20180502).

Disclosure

The authors report no conflicts of interest in this work.

References

- Bari ME, Haider G, Malik K, Waqas M, Mahmood SF, Siddiqui M. Outcomes of post-neurosurgical ventriculostomy-associated infections. *Surg Neurol Int.* 2017;8:124. doi:10.4103/sni.sni_440_16
- Zheng G, Li S, Zhao M, et al. Time to positive culture can differentiate post-neurosurgical coagulase-negative Staphylococci other than *S epidermidis* meningitis from contamination: a case-control observational study. *J Clin Lab Anal.* 2020;34(10):e23447. doi:10.1002/jcla.23447
- Shi YJ, Zheng GH, Qian LY, Qsman RA, Li GG, Zhang GJ. Longitudinal analysis of risk factors for clinical outcomes of enterobacteriaceae meningitis/encephalitis in post-neurosurgical patients: a comparative cohort study during 2014–2019. *Infect Drug Resist.* 2020;13:2161–2170. doi:10.2147/IDR.S252331
- Hernández Ortiz OH, García García HI, Muñoz Ramírez F, et al. Development of a prediction rule for diagnosing postoperative meningitis: a cross-sectional study. *J Neurosurg.* 2018;128(1):262–271. doi:10.3171/2016.10.JNS16379
- Leib SL, Boscacci R, Gratzl O, Zimmerli W. Predictive value of cerebrospinal fluid (CSF) lactate level versus CSF/blood glucose ratio for the diagnosis of bacterial meningitis following neurosurgery. *Clin Infect Dis.* 1999;29(1):69–74. doi:10.1086/520184
- Wang Y, Lei X, Zhao Y, et al. An improved clinical prediction rule for identifying neonatal bacterial meningitis: a multicenter cohort study. *Transl Pediatr.* 2021;10(1):64–72. doi:10.21037/tp-20-255
- Sipahi OR, Mermer S, Demirdal T, et al. Tigecycline in the treatment of multidrug-resistant *Acinetobacter baumannii* meningitis: results of the Ege study. *Clin Neurol Neurosurg.* 2018;172:31–38. doi:10.1016/j.clineuro.2018.06.008
- Alnomasy SF, Alotaibi BS, Mujamammi AH, Hassan EA, Ali ME. Microbial aspects and potential markers for differentiation between bacterial and viral meningitis among adult patients. *PLoS One.* 2021;16(6):e0251518. doi:10.1371/journal.pone.0251518
- Mirkhani A, Roshanpoor A, Pournik O, Haddadi H, Mirzaei J, Kaveh F. Developing a prognostic model to predict mortality in patients with acute bacterial meningitis. *Stud Health Technol Inform.* 2021;281:774–778.
- Azim A. Presepsin: a promising biomarker for sepsis. *Indian J Crit Care Med.* 2021;25(2):117–118.
- Aulin L, de Lange DW, Saleh M, van der Graaf PH, Völler S, van Hasselt J. Biomarker-guided individualization of antibiotic therapy. *Clin Pharmacol Ther.* 2021. doi:10.1002/cpt.2194
- Yaegashi Y, Shirakawa K, Sato N, et al. Evaluation of a newly identified soluble CD14 subtype as a marker for sepsis. *J Infect Chemother.* 2005;11(5):234–238. doi:10.1007/s10156-005-0400-4
- Mussap M, Noto A, Fravega M, Fanos V. Soluble CD14 subtype presepsin (sCD14-ST) and lipopolysaccharide binding protein (LBP) in neonatal sepsis: new clinical and analytical perspectives for two old biomarkers. *J Matern Fetal Neonatal Med.* 2011;24(Suppl 2):12–14. doi:10.3109/14767058.2011.601923
- Drăgoescu AN, Pădureanu V, Stănculescu AD, et al. Presepsin as a potential prognostic marker for sepsis according to actual practice guidelines. *J Pers Med.* 2020;11(1). doi:10.3390/jpm11010002
- Abudeev SA, Kiselev KV, Kruglyakov NM, et al. Cerebrospinal fluid presepsin as a marker of nosocomial infections of the central nervous system: a Prospective Observational Study. *Front Neurol.* 2018;9:58. doi:10.3389/fneur.2018.00058
- Stubljarić D, Kopitar AN, Groselj-Grenc M, Suhadolc K, Fabjan T, Skvarc M. Diagnostic accuracy of presepsin (sCD14-ST) for prediction of bacterial infection in cerebrospinal fluid samples from children with suspected bacterial meningitis or ventriculitis. *J Clin Microbiol.* 2015;53(4):1239–1244. doi:10.1128/JCM.03052-14
- Zhang G, Yang C, Kang X, Gao Z, Wan H, Liu Y. The combination of cerebrospinal fluid procalcitonin, lactate, interleukin-8 and interleukin-10 concentrations for the diagnosis of post-neurosurgical bacterial meningitis: a prospective study. *Ann Clin Biochem.* 2019;56(1):133–140. doi:10.1177/0004563218794729
- Carpio R, Zapata J, Spanuth E, Hess G. Utility of presepsin (sCD14-ST) as a diagnostic and prognostic marker of sepsis in the emergency department. *Clin Chim Acta.* 2015;450:169–175. doi:10.1016/j.cca.2015.08.013
- Kobayashi S, Amano H, Terawaki H, Kawaguchi Y, Yokoo T. Prediction of presepsin concentrations through commensurate decline in kidney function in the elderly. *Clin Chim Acta.* 2020;500:1–9. doi:10.1016/j.cca.2019.09.012
- Handke J, Piazza O, Larmann J, Tesoro S, De Robertis E. Presepsin as a biomarker in perioperative medicine. *Minerva Anestesiol.* 2020;86(7):768–776. doi:10.23736/S0375-9393.20.14169-5
- Qi Z, Zhang Q, Liu B, Shao F, Li C. Presepsin as a biomarker for evaluating prognosis and early innate immune response of out-of-hospital cardiac arrest patients after return of spontaneous circulation. *Crit Care Med.* 2019;47(7):e538–e546. doi:10.1097/CCM.0000000000003764
- Aliu-Bejta A, Atelj A, Kurshumliu M, Dreshaj S, Baršić B. Presepsin values as markers of severity of sepsis. *Int J Infect Dis.* 2020;95:1–7. doi:10.1016/j.ijid.2020.03.057
- Ferrarese A, Frigo AC, Mion MM, et al. Diagnostic and prognostic role of presepsin in patients with cirrhosis and bacterial infection. *Clin Chem Lab Med.* 2020;59:775.
- Tambo M, Taguchi S, Nakamura Y, Okegawa T, Fukuhara H. Presepsin and procalcitonin as predictors of sepsis based on the new Sepsis-3 definitions in obstructive acute pyelonephritis. *BMC Urol.* 2020;20(1):23. doi:10.1186/s12894-020-00596-4
- Yoon SH, Kim EH, Kim HY, Ahn JG. Presepsin as a diagnostic marker of sepsis in children and adolescents: a systemic review and meta-analysis. *BMC Infect Dis.* 2019;19(1):760. doi:10.1186/s12879-019-4397-1
- Zheng G, Ji X, Yu X, et al. Development and verification of a discriminate algorithm for diagnosing post-neurosurgical bacterial meningitis-A multicenter observational study. *J Clin Lab Anal.* 2020;34(2):e23069. doi:10.1002/jcla.23069
- Yan ST, Sun LC, Jia HB, Gao W, Yang JP, Zhang GQ. Procalcitonin levels in bloodstream infections caused by different sources and species of bacteria. *Am J Emerg Med.* 2017;35(4):579–583. doi:10.1016/j.ajem.2016.12.017
- Leli C, Ferranti M, Moretti A, Al Dhabab ZS, Cenci E, Mencacci A. Procalcitonin levels in gram-positive, gram-negative, and fungal bloodstream infections. *Dis Markers.* 2015;2015:701480. doi:10.1155/2015/701480
- Wen MY, Huang LQ, Yang F, et al. Presepsin level in predicting patients' in-hospital mortality from sepsis under sepsis-3 criteria. *Ther Clin Risk Manag.* 2019;15:733–739. doi:10.2147/TCRM.S209710

Infection and Drug Resistance

Dovepress

Publish your work in this journal

Infection and Drug Resistance is an international, peer-reviewed open-access journal that focuses on the optimal treatment of infection (bacterial, fungal and viral) and the development and institution of preventive strategies to minimize the development and spread of resistance. The journal is specifically concerned with the epidemiology of

antibiotic resistance and the mechanisms of resistance development and diffusion in both hospitals and the community. The manuscript management system is completely online and includes a very quick and fair peer-review system, which is all easy to use. Visit <http://www.dovepress.com/testimonials.php> to read real quotes from published authors.

Submit your manuscript here: <https://www.dovepress.com/infection-and-drug-resistance-journal>