

## Association of *PIK3CA* mutation and PTEN loss with expression of CD274 (PD-L1) in colorectal carcinoma

Tomotaka Ugai<sup>a,b</sup>, Melissa Zhao<sup>a</sup>, Takashi Shimizu<sup>c</sup>, Naohiko Akimoto<sup>a</sup>, Shanshan Shi<sup>a</sup>, Yasutoshi Takashima<sup>a</sup>, Rong Zhong<sup>a</sup>, Mai Chan Lau<sup>a</sup>, Koichiro Haruki<sup>a</sup>, Kota Arima<sup>a</sup>, Kenji Fujiyoshi<sup>a</sup>, Benjamin Langworthy<sup>b</sup>, Yohei Masugi<sup>a</sup>, Annacarolina da Silva<sup>a</sup>, Katsuhiko Noshio<sup>a</sup>, Yoshifumi Baba<sup>a</sup>, Mingyang Song<sup>d,e,f</sup>, Andrew T. Chan<sup>e,f,g,h</sup>, Molin Wang<sup>b,g,i</sup>, Jeffrey A. Meyerhardt<sup>j</sup>, Marios Giannakis<sup>j,k,l</sup>, Juha P. Väyrynen<sup>a,j,m</sup>, Jonathan A. Nowak<sup>a</sup>, and Shuji Ogino<sup>a,b,k,n</sup>

<sup>a</sup>Program in MPE Molecular Pathological Epidemiology, Department of Pathology, Brigham and Women's Hospital and Harvard Medical School, Boston, MA, USA; <sup>b</sup>Department of Epidemiology, Harvard T.H. Chan School of Public Health, Boston, MA, USA; <sup>c</sup>Department of Cardiovascular Medicine, Graduate School of Medicine, the University of Tokyo, Tokyo, Japan; <sup>d</sup>Department of Nutrition, Harvard T.H. Chan School of Public Health, Boston, MA, USA; <sup>e</sup>Clinical and Translational Epidemiology Unit, Massachusetts General Hospital and Harvard Medical School, Boston, MA, USA; <sup>f</sup>Division of Gastroenterology, Massachusetts General Hospital, Boston, MA, USA; <sup>g</sup>Channing Division of Network Medicine, Department of Medicine, Brigham and Women's Hospital, Harvard Medical School, Boston, MA, USA; <sup>h</sup>Department of Immunology and Infectious Diseases, Harvard T.H. Chan School of Public Health, Boston, MA, USA; <sup>i</sup>Department of Biostatistics, Harvard T.H. Chan School of Public Health, Boston, MA, USA; <sup>j</sup>Department of Medical Oncology, Dana-Farber Cancer Institute and Harvard Medical School, Boston, MA, USA; <sup>k</sup>Broad Institute of MIT and Harvard, Cambridge, MA, USA; <sup>l</sup>Department of Medicine, Brigham and Women's Hospital and Harvard Medical School, Boston, MA, USA; <sup>m</sup>Cancer and Translational Medicine Research Unit, Medical Research Center Oulu, Oulu University Hospital, and University of Oulu, Oulu, Finland; <sup>n</sup>Cancer Immunology and Cancer Epidemiology Programs, Dana-Farber Harvard Cancer Center, Boston, MA, USA

### ABSTRACT

Immunotherapy targeting the CD274 (PD-L1)/PDCD1 (PD-1) immune checkpoint axis has emerged as a promising treatment strategy for various cancers. Experimental evidence suggests that phosphatidylinositol-4,5-bisphosphate 3-kinase (PI3K) signaling may upregulate CD274 expression. Thus, we hypothesized that *PIK3CA* mutation, PTEN loss, or their combined status might be associated with CD274 overexpression in colorectal carcinoma. We assessed tumor CD274 and PTEN expression by immunohistochemistry and assessed *PIK3CA* mutation by pyrosequencing in 753 patients among 4,465 incident rectal and colon cancer cases that had occurred in two U.S.-wide prospective cohort studies. To adjust for potential confounders and selection bias due to tissue availability, inverse probability weighted multivariable ordinal logistic regression analyses used the 4,465 cases and tumoral data including microsatellite instability, CpG island methylator phenotype, *KRAS* and *BRAF* mutations. *PIK3CA* mutation and loss of PTEN expression were detected in 111 of 753 cases (15%) and 342 of 585 cases (58%), respectively. Tumor CD274 expression was negative in 306 (41%), low in 195 (26%), and high in 252 (33%) of 753 cases. PTEN loss was associated with CD274 overexpression [multivariable odds ratio (OR) 1.83; 95% confidence interval (CI), 1.22–2.75;  $P = .004$ ]. *PIK3CA* mutation was statistically-insignificantly ( $P = .036$  with the stringent alpha level of 0.005) associated with CD274 overexpression (multivariable OR, 1.54; 95% CI, 1.03–2.31). *PIK3CA*-mutated PTEN-lost tumors ( $n = 33$ ) showed higher prevalence of CD274-positivity (82%) than *PIK3CA*-wild-type PTEN-lost tumors ( $n = 204$ ; 70% CD274-positivity) and PTEN-expressed tumors ( $n = 147$ ; 50% CD274-positivity) ( $P = .003$ ). Our findings support the role of PI3K signaling in the CD274/PDCD1 pathway.

### ARTICLE HISTORY

Received 6 May 2021  
Revised 22 June 2021  
Accepted 12 July 2021



### KEYWORDS

Colorectal neoplasms; immune checkpoint; molecular pathological epidemiology; PI3K pathway; tumor microenvironment

### Introduction


Over the past few decades, cancer immunotherapies have changed the landscape of cancer treatment. Among them, immune checkpoint inhibitors targeting PDCD1 (programmed cell death 1, PD-1) and its ligand, CD274 (programmed cell death 1 ligand 1, PD-L1) on tumor cells, are increasingly used for a variety of cancers, including colorectal cancer.<sup>1,2</sup> Recent studies suggest that oncogenic activation of signaling pathways play an important role in CD274 upregulation in cancer cells.<sup>3–5</sup>

Phosphatidylinositol-4,5-bisphosphate 3-kinase (PI3K) signaling plays a central role in several cellular functions that are influential in oncogenesis and metastasis.<sup>6,7</sup> *PIK3CA* encodes the catalytic subunit of PI3K that is involved in cell growth, proliferation, survival, and apoptosis, through induction of AKT phosphorylation and, subsequently, MTOR activation.<sup>7</sup> Conversely, PTEN counteracts this mechanism by dephosphorylating phosphatidylinositol-3,4,5-triphosphate to phosphatidylinositol-4,5-bisphosphate.<sup>7–9</sup>

**CONTACT** Shuji Ogino  [sogino@bwh.harvard.edu](mailto:sogino@bwh.harvard.edu)  Program in MPE Molecular Pathological Epidemiology, Department of Pathology, Brigham and Women's Hospital, 221 Longwood Ave., EBRC Room 404A, Boston, MA 02115, USA

The first five authors contributed equally as co-first authors.

The last four authors contributed equally as co-last authors.

 Supplemental data for this article can be accessed on the [publisher's website](#).

© 2021 The Author(s). Published with license by Taylor & Francis Group, LLC.

This is an Open Access article distributed under the terms of the Creative Commons Attribution-NonCommercial License (<http://creativecommons.org/licenses/by-nc/4.0/>), which permits unrestricted non-commercial use, distribution, and reproduction in any medium, provided the original work is properly cited.

Evidence indicates that *PIK3CA* mutation is associated with *KRAS* mutation in colorectal cancer and the prevalence of *PIK3CA* mutation gradually increases from rectum to cecum.<sup>10–12</sup> While *PIK3CA* mutation in colorectal cancer may not be a prognostic biomarker,<sup>7,10,13–17</sup> it may be a predictive biomarker for response to aspirin.<sup>18–22</sup> With regard to CD274 (PD-L1) overexpression in colorectal cancer, while it may not be a prognostic biomarker,<sup>23–27</sup> it has been shown to predict resistance to aspirin,<sup>28</sup> suggesting a possible interplay between the PTGS2 and PDCD1 pathways.<sup>29</sup> With regard to PTEN, evidence indicates that loss of PTEN expression is a potential therapeutic target in colorectal cancer.<sup>30</sup> Experimental studies suggest that activation of PI3K signaling may upregulate CD274 expression in certain experimental models,<sup>4,31,32</sup> including colon cancer cell lines.<sup>26</sup> However, as evidence indicates that tumor microenvironment can substantially change cellular gene expression profiles,<sup>33,34</sup> experimental findings under artificial or non-human conditions need to be tested in human tumor tissue research. We therefore tested the hypothesis that *PIK3CA* mutation and PTEN loss might be associated with tumor CD274 overexpression in human colorectal cancer specimens.

To test our hypothesis, we used a database of 4,465 incident colorectal cancer cases, including 753 cases with available molecular data, from two large U.S.-wide prospective cohort studies. This comprehensive dataset allowed us to examine the association of *PIK3CA* mutation, PTEN loss, and their combined status with CD274 expression in tumor tissue after adjustment for potential confounders and selection bias due to tissue availability.

## Materials and methods

### Study population

We used two large prospective cohort studies in the U.S., the Nurses' Health Study (NHS, 121,701 women aged 30–55 years followed since 1976) and the Health Professionals Follow-up Study (HPFS, 51,529 men aged 40–75 years followed since 1986).<sup>35</sup> Every two years, follow-up questionnaires were obtained to update information, such as lifestyle factors and newly-diagnosed diseases, including colorectal cancer. The overall response rate for these questionnaires was more than 90% in each follow-up questionnaire cycle. The National Death Index was used to confirm deaths of participants and identify unreported lethal colorectal cancer cases. We documented 4,465 colorectal cancer cases that had occurred in the two cohort studies during the follow-up until 2012. Participating physicians, who were blinded to exposure data, reviewed medical records of colorectal cancer patients to collect data on tumor characteristics including tumor size, tumor location, and disease stage based on the American Joint Committee on Cancer (AJCC) tumor, node and metastases classification, and identified causes of death for participants. We obtained formalin-fixed paraffin-embedded (FFPE) tumor tissue samples from the hospitals where participants underwent tumor resection. A single pathologist (S.O.), blinded to other data, reviewed all hematoxylin and eosin-stained tissue sections of

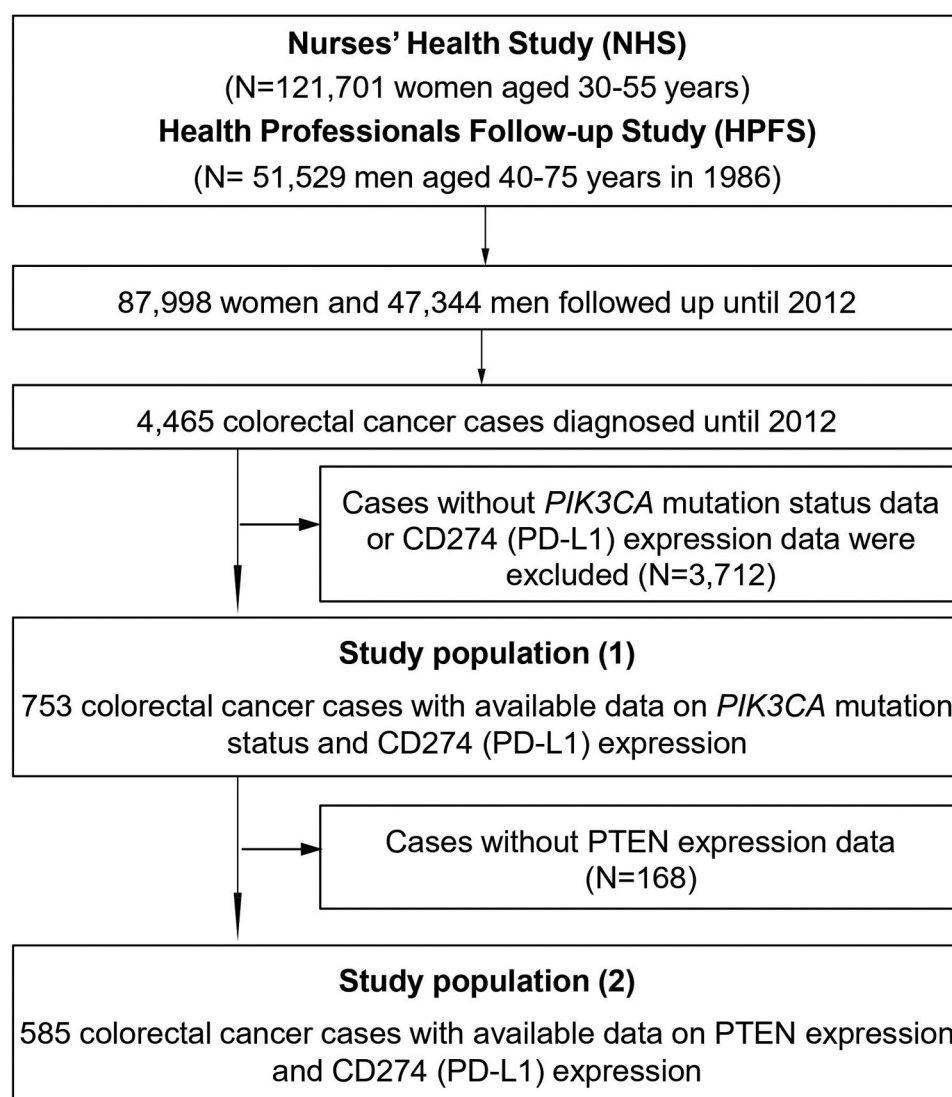
colorectal cancer cases and recorded pathological features.<sup>36</sup> In this study, we utilized a molecular pathological epidemiology database of 753 colorectal cancer cases with available data on *PIK3CA* mutation status and CD274 (PD-L1) expression and 3,712 colorectal cancer cases without tissue data (Figure 1). Comparison of clinical characteristics between cases with available tissue data and those without available tissue data is shown in Table S1. We included both colon and rectal cancers based on based on the colorectal continuum theory: i.e., a gradual change of clinical and tumor characteristics throughout the colorectum.<sup>11,37</sup>

Informed consent was obtained from all study participants at study enrollment. The study protocol was approved by the institutional review boards of the Brigham and Women's Hospital and Harvard T.H. Chan School of Public Health (Boston, MA, USA), and those of participating registries as required.

### Tumor tissue analyses

Tumor DNA was extracted from archival FFPE tissue sections with QIAamp DNA FFPE Tissue Kit. Microsatellite instability (MSI) status was examined using 10 microsatellite markers (D2S123, D5S346, D17S250, BAT25, BAT26, BAT40, D18S55, D18S56, D18S67, and D18S487), and MSI-high was defined as the presence of instability in  $\geq 30\%$  of the markers.<sup>38</sup> Methylation status of eight CpG island methylator phenotype (CIMP)-specific promoters (*CACNA1G*, *CDKN2A*, *CRABP1*, *IGF2*, *MLH1*, *NEUROG1*, *RUNX3*, and *SOCS1*) and long interspersed nucleotide element-1 (LINE-1) were assessed as previously described.<sup>39–41</sup> CIMP-high was defined as the presence of methylated promoters in at least six of the eight markers. Polymerase chain reaction and pyrosequencing were targeted for *KRAS* (codons 12, 13, 61, and 146), *BRAF* (codon 600), and *PIK3CA* (exons 9 and 20) to detect mutations.<sup>22,42</sup> The PCR products were sequenced by Pyrosequencing PSQ96 HS System (Biotage AB) following the manufacturer's instructions.<sup>43</sup>

Tissue microarrays were constructed from FFPE tissue.<sup>44</sup> Immunohistochemical analyses of CD274 (PD-L1) and PTEN expression in tumor cells were performed using anti-CD274 antibody (Clone MIH1, dilution, 1:50; eBioscience) and anti-PTEN antibody (Clone 6H2.1, dilution 1:200; Abcam), respectively (Figure 2), following standardized protein nomenclature recommended by the expert panel.<sup>45</sup> Blind to other data, immunohistochemical expression was recorded by a single investigator for each marker (CD274 by Y.M.; PTEN by K. N.). Tumor CD274 expression was evaluated based on immunostaining in the cytoplasm and membrane of tumor cells, as previously described.<sup>24,46</sup> Tumor CD274 expression was interpreted as negative, low, or high. Appropriate positive and negative controls were included in each run of immunohistochemistry. PTEN expression was evaluated as intact in the presence of moderate or strong nuclear and cytoplasmic staining in tumor cells as previously described.<sup>47</sup> Loss of PTEN expression was defined as the absence of staining or only weak nuclear and/or cytoplasmic staining of tumor cells.<sup>47</sup>



**Figure 1.** Flow diagram of study population in the nurses' health study and the health professionals follow-up study.

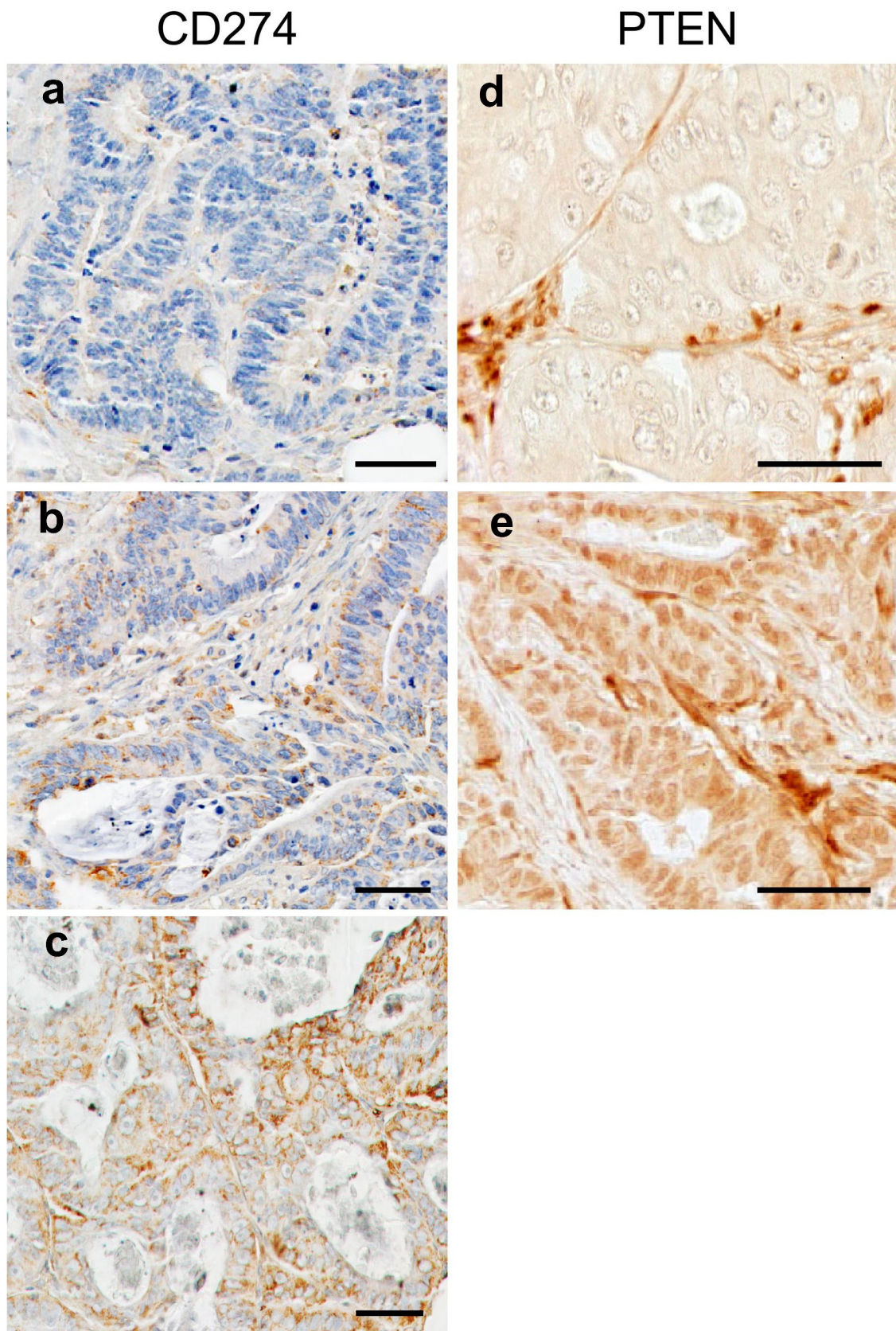
A second investigator (A.d.S. for CD274; Y.B. for PTEN) independently reviewed 148 cases for CD274 expression and 109 cases for PTEN expression, and the weighted kappa values between the two independent investigators were 0.65 for CD274 expression ( $P < .001$ ) and 0.45 for PTEN expression ( $P < .001$ ).

### Statistical analysis

All statistical analyses were performed using SAS software (version 9.4, SAS Institute, Cary, NC, USA). All  $P$  values were two-sided, and we used the stringent two-sided  $\alpha$  level of 0.005 for our hypothesis testing, as recommended by a panel of expert statisticians.<sup>48</sup> Our primary hypothesis testing was an assessment of a statistical association of *PIK3CA* mutation status (wild-type and mutant; as a predictor variable) and PTEN expression (intact and lost; as an predictor variable) with CD274 expression score (negative, low, and high; as an ordinal outcome variable). All other analyses were secondary analyses. We used multivariable ordinal logistic regression models for our primary hypothesis testing. The proportional

odds assumption was generally satisfied in ordinal logistic regression models ( $P > .05$ ). The chi-square test was used to compare categorical data between *PIK3CA* mutation and PTEN expression categories.

To adjust for selection bias due to the availability of tumor tissue, we integrated the inverse probability weighting (IPW) method into multivariable ordinal logistic regression analyses using covariate data of the 4,465 incident colorectal cancer cases.<sup>49,50</sup> Multivariable ordinal logistic regression analyses initially included sex (female vs. male), age at diagnosis (continuous), year of diagnosis (continuous), family history of colorectal cancer in any first-degree relatives (present vs. absent), tumor location (proximal colon vs. distal colon vs. rectum), tumor differentiation (well to moderate vs. poor), disease stage (I to II vs. III to IV), MSI status (MSI-high vs. non-MSI-high), CIMP (high vs. low/negative), LINE-1 methylation level (continuous), *BRAF* mutation (mutant vs. wild-type), and *KRAS* mutation (mutant vs. wild-type). To select variables for the final models, a threshold of  $P = .05$  was used in a backward stepwise elimination procedure. The variables which remained in the final models are shown in [Tables 2](#)



**Figure 2.** Tumor CD274 and PTEN expression in colorectal cancer. Tumor CD274 expression was evaluated based on immunostaining in the cytoplasm and membrane of tumor cells. Tumor CD274 expression was interpreted as negative (a), low (b), or high (c) according to membranous and cytoplasmic intensity. Tumor PTEN expression was evaluated based on immunostaining in the cytoplasm and nuclear of tumor cells. Cytoplasmic and nuclear PTEN expression level was classified as lost (d) or intact (e) according to cytoplasmic and nuclear intensity. Scale bars represent 50  $\mu$ m.

and 4. In this analysis, cases with missing data (family history of colorectal cancer in any first-degree relatives, 0.9%; tumor location, 0.3%; tumor differentiation, 0.3%; disease stage, 6.0%; MSI status, 2.4%; CIMP status, 1.7%; *BRAF* mutation, 1.4%; and *KRAS* mutation, 2.2%) were imputed as the most common category of the given variable to avoid overfitting of the models. For cases with missing data on LINE-1 methylation level (2.7%), we substituted the mean value and assigned a separate indicator variable. It was confirmed that no results were substantially altered after excluding the cases with missing information in any of the covariates. We categorized LINE-1 methylation level as low vs. high based on the median level. We conducted stratified analyses by LINE-1 methylation level (high vs. low) and CIMP status (high vs. low/negative), and

assessed a statistical interaction using the Wald test for the cross-product term of *PIK3CA* mutation/*PTEN* expression and CIMP status or LINE-1 methylation level in the logistic regression model.

## Results

*PIK3CA* mutation was detected in 111 (15%) of 753 cases, whereas loss of *PTEN* expression was detected 342 (58%) of 585 cases. Among 753 cases, tumor CD274 (PD-L1) expression was negative in 306 (41%), low in 195 (26%), and high in 252 (33%) cases. We summarized the clinical, pathological, and molecular characteristics of colorectal cancer cases according to *PIK3CA* mutation and *PTEN* expression in tumor tissue

**Table 1.** Clinical, pathological, and molecular characteristics of colorectal cancer cases according to *PIK3CA* mutation and *PTEN* expression in tumor tissue.

Characteristic*	All cases (N = 753)	<i>PIK3CA</i> mutation		<i>P</i> value <sup>†</sup>	<i>PTEN</i> expression		<i>P</i> value <sup>†</sup>
		Wild-type (N = 642)	Mutant (N = 111)		Intact (N = 243)	Lost (N = 342)	
Sex				0.34			0.40
Male (HPFS)	342 (45%)	287 (45%)	55 (50%)		103 (42%)	133 (39%)	
Female (NHS)	411 (55%)	355 (55%)	56 (50%)		140 (58%)	209 (61%)	
Mean age ± SD, (years)	69.4 ± 9.0	69.3 ± 9.0	70.1 ± 8.6	0.39	68.4 ± 7.2	67.1 ± 8.8	0.069
Year of diagnosis				0.82			0.73
1995 or before	228 (30%)	197 (31%)	31 (28%)		105 (43%)	140 (41%)	
1996–2000	249 (33%)	212 (33%)	37 (33%)		86 (35%)	132 (39%)	
2001–2012	276 (37%)	233 (36%)	43 (39%)		52 (21%)	70 (20%)	
Family history of colorectal cancer in first-degree relative(s)				0.51			0.38
Absent	591 (79%)	507 (80%)	84 (77%)		184 (77%)	271 (80%)	
Present	153 (21%)	128 (20%)	25 (23%)		56 (23%)	69 (20%)	
Tumor location				0.018			0.67
Cecum	132 (18%)	107 (17%)	25 (23%)		42 (17%)	69 (20%)	
Ascending to transverse colon	238 (32%)	198 (31%)	40 (36%)		79 (33%)	103 (30%)	
Descending to sigmoid colon	223 (30%)	188 (29%)	35 (32%)		68 (28%)	103 (30%)	
Rectum	156 (21%)	145 (23%)	11 (9.9%)		53 (22%)	66 (19%)	
Tumor differentiation				0.43			0.90
Well to modulate	682 (91%)	579 (90%)	103 (93%)		220 (91%)	311 (91%)	
Poor	69 (9.2%)	61 (9.5%)	8 (7.2%)		22 (9.1%)	30 (8.8%)	
AJCC disease stage				0.85			0.63
I	160 (23%)	134 (23%)	26 (25%)		60 (27%)	77 (24%)	
II	224 (32%)	190 (32%)	34 (32%)		69 (31%)	113 (35%)	
III	211 (30%)	183 (31%)	28 (27%)		62 (28%)	97 (30%)	
IV	105 (15%)	88 (15%)	17 (16%)		32 (14%)	40 (12%)	
Mean LINE-1 methylation level (%)	62.5 ± 9.7	62.2 ± 9.9	64.2 ± 8.7	0.043	62.7 ± 8.9	61.3 ± 10.0	0.078
MSI status				0.65			0.24
Non-MSI-high	619 (83%)	525 (83%)	94 (85%)		190 (82%)	288 (85%)	
MSI-high	125 (17%)	108 (17%)	17 (15%)		43 (18%)	50 (15%)	
CIMP status				0.36			0.071
Low/negative	578 (83%)	497 (83%)	81 (79%)		193 (81%)	292 (87%)	
High	122 (17%)	101 (17%)	21 (21%)		45 (19%)	45 (13%)	
<i>KRAS</i> mutation				<0.001			0.95
Wild-type	446 (60%)	398 (63%)	48 (43%)		136 (57%)	190 (57%)	
Mutant	298 (40%)	235 (37%)	63 (57%)		102 (43%)	144 (43%)	
<i>BRAF</i> mutation				0.83			0.027
Wild-type	635 (85%)	540 (85%)	95 (86%)		195 (82%)	298 (88%)	
Mutant	113 (15%)	97 (15%)	16 (14%)		44 (18%)	40 (12%)	
CD274 (PD-L1) expression score				0.095			<0.001
Negative	306 (41%)	268 (42%)	38 (34%)		78 (49%)	78 (28%)	
Low	195 (26%)	166 (26%)	29 (26%)		33 (21%)	79 (29%)	
High	252 (33%)	208 (32%)	44 (40%)		48 (30%)	117 (43%)	
<i>PTEN</i> expression				0.83			
Intact	222 (43%)	184 (42%)	38 (44%)				
Lost	299 (57%)	250 (58%)	49 (56%)				

\* (%) indicates the proportion of patients with a specific clinical, pathologic, or molecular characteristic among all patients or in strata of *PIK3CA* mutation or *PTEN* expression.

<sup>†</sup>To compare categorical data between *PIK3CA* mutation or *PTEN* expression categories, the chi-square test was performed. To compare continuous variables, an analysis of variance was performed.

Abbreviations: AJCC, American Joint Committee on Cancer; CIMP, CpG island methylator phenotype; HPFS, Health Professionals Follow-up Study; LINE-1, long interspersed nucleotide element-1; MSI, microsatellite instability; NHS, Nurses' Health Study; PD-L1, programmed cell death 1 ligand 1; SD, standard deviation.

**Table 2.** Inverse probability weighting-adjusted ordinal logistic regression analysis to assess the association of tumor *PIK3CA* mutation or PTEN expression (predictor) with CD274 (PD-L1) expression (outcome).

Characteristic	CD274 (PD-L1) expression For one category increase in three ordinal CD274 categories			
	Univariable OR (95% CI)*	P value	Multivariable OR (95% CI) *†	P value
<i>PIK3CA</i> mutation				
Wild-type (N = 642)	1 (referent)		1 (referent)	
Mutant (N = 111)	1.53 (1.01–2.31)	0.045	1.54 (1.03–2.31)	0.036
MSI status				
Non-MSI-high (N = 619)	1 (referent)		1 (referent)	
MSI-high (N = 125)	0.60 (0.41–0.89)	0.010	0.63 (0.42–0.93)	0.022
Year of diagnosis (per 5-year increase)	0.85 (0.74–0.97)	0.018	0.86 (0.75–0.98)	0.027
PTEN expression				
Intact (N = 243)	1 (referent)		1 (referent)	
Lost (N = 342)	1.88 (1.24–2.84)	0.003	1.83 (1.22–2.75)	0.004
MSI status				
Non-MSI-high (N = 478)	1 (referent)		1 (referent)	
MSI-high (N = 93)	0.38 (0.22–0.65)	<0.001	0.46 (0.26–0.82)	0.008
AJCC disease stage				
I to II (N = 319)	1 (referent)		1 (referent)	
III to IV (N = 231)	1.78 (1.21–2.63)	0.004	1.62 (1.09–2.43)	0.019
Year of diagnosis (per 5-year increase)	0.77 (0.63–0.94)	0.010	0.79 (0.65–0.96)	0.027

\* IPW was applied to reduce selection bias due to the availability of tumor tissue.

†The multivariable ordinal logistic regression model initially included sex, age, year of diagnosis, tumor differentiation, disease stage, family history of colorectal cancer, tumor location, microsatellite instability, CpG island methylator phenotype, long-interspersed nucleotide element-1 methylation level, *KRAS* mutation and *BRAF* mutation. A backward elimination with a threshold *P* of 0.05 was used to select variables for the final models. The variables which remained in the final models are shown in this table.

Abbreviations: AJCC, American Joint Committee on Cancer; CI, confidence interval; IPW, inverse probability weighting; MSI, microsatellite instability; OR, odds ratio; PD-L1, programmed cell death 1 ligand 1.

(Table 1). Loss of PTEN was associated with tumor CD274 overexpression ( $P < .001$ ).

We used multivariable logistic regression model (to adjust for confounding) combined with inverse probability weighting (IPW) method on all 4,465 incident colorectal cancer cases to adjust for selection bias due to tissue availability (Table 2). Loss of PTEN was statistically significantly associated with higher CD274 expression [multivariable odds ratio (OR) 1.83; 95% confidence interval (CI), 1.22–2.75;  $P = .004$ ]. *PIK3CA* mutation was statistically-insignificantly ( $P = .036$  with the stringent alpha level of 0.005) associated with CD274 overexpression (multivariable OR, 1.54; 95% CI, 1.03–2.31). We confirmed that similar results were obtained by sensitivity analyses without IPW adjustment (Tables S2 and S3). We also stratified analyses by LINE-1 methylation level and CIMP status and did not observe significant effect modification (Table S4).

We evaluated the association of the combined status of *PIK3CA* mutation and PTEN expression with CD274 overexpression (Table 3). *PIK3CA*-mutated PTEN-lost tumors ( $n = 33$ ) showed higher prevalence of CD274-positivity (82%) than *PIK3CA*-wild-type PTEN-lost tumors ( $n = 204$ ; 70%

**Table 3.** CD274 (PD-L1) expression score according to *PIK3CA* mutation and PTEN expression in tumor tissue.

Characteristic*	All cases (N = 384)	<i>PIK3CA</i> mutation and PTEN expression				P value†
		<i>PIK3CA</i> wild-type /PTEN intact	<i>PIK3CA</i> mutant/ PTEN intact	<i>PIK3CA</i> wild-type lost	<i>PIK3CA</i> mutant/ PTEN lost	
CD274 (PD-L1) expression score						0.003
Negative	140 (36%)	61 (50%)	12 (50%)	61 (30%)	6 (18%)	
Low	100 (26%)	26 (21%)	5 (20%)	58 (28%)	11 (33%)	
High	144 (38%)	36 (29%)	7 (29%)	85 (42%)	16 (48%)	

\* (%) indicates the proportion of patients with a specific CD274 expression score category among all patients or in strata of *PIK3CA* mutation and PTEN expression.

†To compare categorical data between *PIK3CA* mutation and PTEN expression categories, the chi-square test was performed.

Abbreviations: PD-L1, programmed cell death 1 ligand 1.

**Table 4.** Inverse probability weighting-adjusted ordinal logistic regression analysis to assess the association of the combination of *PIK3CA* mutation and PTEN expression (predictor) with CD274 (PD-L1) expression (outcome).

Characteristic	CD274 (PD-L1) expression For one category increase in three ordinal CD274 categories			
	Univariable OR (95% CI)*	P value	Multivariable OR (95% CI) *†	P value
Combination of <i>PIK3CA</i> mutation and PTEN expression				
<i>PIK3CA</i> wild-type/PTEN intact (N = 123)	1 (referent)		1 (referent)	
<i>PIK3CA</i> mutant/PTEN intact (N = 24)	1.49 (0.59–3.77)	0.40	1.56 (0.63–3.86)	0.33
<i>PIK3CA</i> wild-type/PTEN lost (N = 204)	1.97 (1.23–3.16)	0.005	1.90 (1.19–3.06)	0.008
<i>PIK3CA</i> mutant/PTEN lost (N = 33)	3.53 (1.55–8.07)	0.003	3.70 (1.68–8.19)	0.001
MSI status				
Non-MSI-high (N = 322)	1 (referent)		1 (referent)	
MSI-high (N = 63)	0.35 (0.21–0.61)	<0.001	0.35 (0.20–0.62)	<0.001

\* IPW was applied to reduce selection bias due to the availability of tumor tissue.

†The multivariable ordinal logistic regression model initially included sex, age, year of diagnosis, tumor differentiation, disease stage, family history of colorectal cancer, tumor location, microsatellite instability, CpG island methylator phenotype, long-interspersed nucleotide element-1 methylation level, *KRAS* mutation and *BRAF* mutation. A backward elimination with a threshold *P* of 0.05 was used to select variables for the final models.

Abbreviations: CI, confidence interval; IPW, inverse probability weighting; MSI, microsatellite instability; OR, odds ratio; PD-L1, programmed cell death 1 ligand 1.

CD274-positivity), *PIK3CA*-mutated PTEN-expressed tumors ( $n = 24$ ; 50% CD274-positivity), and *PIK3CA*-wild-type PTEN-expressed tumors ( $n = 123$ ; 50% CD274-positivity) ( $P = .003$ ). In the multivariable ordinal logistic regression model, the coexistence of *PIK3CA* mutation and loss of PTEN expression was significantly associated with CD274 overexpression (multivariable OR, 3.70; 95% CI, 1.69–8.19, compared to *PIK3CA* wild-type PTEN-intact tumors;  $P = .001$ ) (Table 4).

## Discussion

We conducted this study to test the hypothesis that tumor *PIK3CA* mutation or *PTEN* loss might be associated with tumor CD274 (PD-L1) expression levels in colorectal cancer. We found that loss of *PTEN* was statistically significantly associated with higher CD274 expression, independent of other molecular features, including MSI status, CIMP status, and LINE-1 methylation level. In addition, the combination of *PIK3CA* mutation and loss of *PTEN* expression was more strongly associated with higher CD274 expression than loss of *PTEN* expression alone, suggesting that *PIK3CA* mutation may have additional influences on CD274 expression.

To our best knowledge, only one prior study has examined the association between *PTEN* loss and CD274 expression in human colorectal cancer specimens (from 314 cases).<sup>26</sup> Although another study has examined *PIK3CA* mutation in relation to CD274 expression in 66 colorectal cancer patients, the association could not be assessed because the sample size for this comparison was small.<sup>51</sup> The current study is the largest study that assessed *PIK3CA* mutation and *PTEN* loss (and the first study that assessed their combined status) in relation to CD274 expression in colorectal cancer. It is important to further investigate the consequences of activated PI3K signaling, as our findings suggest a potential role for the PI3K signaling pathway in CD274 (PD-L1) upregulation in colorectal cancer.

The PI3K signaling pathway is crucial in numerous cellular processes, including metabolism, cell survival, differentiation, proliferation, motility, and angiogenesis.<sup>52</sup> Evidence suggests that aberrant alterations of the PI3K pathway by either *PIK3CA* mutation or *PTEN* loss are potential predictive biomarkers for adjuvant therapy in colorectal cancer.<sup>15,22,30</sup> Recent studies have shown that activation of the PI3K pathway regulates tumor-intrinsic and immune-intrinsic features of the immunosuppressive tumor microenvironment.<sup>53,54</sup> In particular, *PTEN* abrogation generates an immune-suppressive microenvironment by altering cytokine secretion patterns.<sup>8</sup> Moreover, a few studies have indicated that activation of PI3K signaling may promote immune escape through regulating PDCD1 (PD-1)/CD274 expression.<sup>3,55</sup> In triple-negative breast cancer, a study reported that knockdown of *PTEN* genes led to high CD274 levels and decreased T-cell proliferation and increased apoptosis.<sup>4</sup> Other studies have shown that the inhibition of the PI3K pathway results in CD274 downregulation in various cancer cell lines.<sup>3,5,56</sup> We previously assessed the association between tumor CD274 expression and T cell infiltration.<sup>46</sup> We found that tumor CD274 expression level was not associated with overall T cell density but inversely associated with FOXP3<sup>+</sup> cell densities,<sup>46</sup> suggesting that the PDCD1 immune checkpoint pathway and regulatory T cells infiltration may be generally mutually exclusive mechanisms of immune evasion. Although more research is needed to clarify the downstream signaling of PDCD1, our findings, based on a large U.S. nationwide sample of human colorectal cancers, support the association of loss of *PTEN* expression with higher CD274 expression, spurring subsequent studies to assess whether PI3K

pathway inhibition can be exploited as a new treatment strategy to supplement immune checkpoint inhibition in colorectal cancer.<sup>8,57</sup>

The mechanisms by which the PI3K signaling pathway upregulate CD274 expression remain to be fully characterized. Although direct transcriptional upregulation by the PI3K pathway may be responsible for higher CD274 expression in breast cancer cell lines,<sup>4</sup> post-translational mechanisms have also been implicated in colorectal cancer or other cancer cell lines.<sup>26,31,32</sup> It is possible that the PI3K signaling pathway upregulate CD274 expression via transcriptional and/or post-transcriptional mechanisms depending on tumor type. Evidence also indicates that tumor CD274 expression differs by colorectal cancer molecular subtypes.<sup>46,58</sup> More evidence from in vitro and in vivo studies of different tumor types is needed to clarify the mechanisms. Mounting evidence suggests that epigenetic aberrations contribute to cancer development.<sup>59</sup> LINE-1 hypomethylation, which reflects the global DNA hypomethylation, has been associated with poor clinical outcomes in colorectal cancer.<sup>60,61</sup> CIMP-high colorectal cancer represents a subset of colorectal cancer developing through epigenetic instability.<sup>62–65</sup> We conducted stratified analyses by LINE-1 methylation level and CIMP status, and assessed the effect of those markers on our results. However, there was little evidence for substantial effect modification.

We acknowledge several limitations in this study. First, our study examined *PIK3CA* mutation and *PTEN* loss but did not examine somatic mutations in *PTEN* gene.<sup>66</sup> However, the majority of cases with *PTEN* loss in colorectal cancer have been attributed to epigenetic causes such as hypermethylation,<sup>30</sup> and immunohistochemistry used in this study is able to detect loss of protein expression irrespective of cause. Second, measurement errors may exist in molecular tissue data. However, such errors would likely be nearly randomly distributed and drive our results toward the null hypothesis. Third, our study was an observational, cross-sectional analysis, and further in vivo and in vitro experimental studies are needed to elucidate the mechanisms underlying our findings. Lastly, in this study, separate single-color immunohistochemistry assays did not allow the examination of co-expression patterns of *PTEN* and CD274 at the single cell level. Therefore, multiplex immunohistochemistry or immunofluorescence assays should be considered in future studies.

This study has notable strengths. First, the integrated molecular pathological epidemiology<sup>67,68</sup> database of clinical, pathological, and tumor molecular characteristics allowed us to rigorously investigate the potential interactive association of the PI3K pathway and tumor PDCD1/CD274 axis in colorectal cancer. Moreover, our prospective cohort studies enabled us to adjust for selection bias due to tissue availability utilizing the 4,465 incident colorectal cancer cases.<sup>50</sup> We have conducted a separate analysis that examined lymphocytic reaction patterns in relation to colorectal cancer survival, using the same cohort studies.<sup>69</sup> In the current study, we tested the hypothesis on CD274 expression in relation to *PIK3CA* mutation and loss of *PTEN* expression. As illustrated by these studies, because the large integrated database of clinical, pathological, and tumor

molecular characteristics has been established, we can utilize it to test different hypotheses in an efficient and robust manner. In addition, cases and specimens in our study were drawn from a large number of hospitals located throughout the U.S., which increased the generalizability of our findings.

In conclusion, our data indicate that PI3K pathway activation by PTEN loss and/or *PIK3CA* mutation is associated with CD274 (PD-L1) overexpression in colorectal tumor tissue, supporting the role of PI3K signaling in the CD274 upregulation.

## Abbreviations

AJCC, American Joint Committee on Cancer; CI, confidence interval; CIMP, CpG island methylator phenotype; FFPE, formalin-fixed paraffin-embedded; HPFS, Health Professionals Follow-up Study; IPW, inverse probability weighting; LINE-1, long interspersed nucleotide element-1; MSI, microsatellite instability; NHS, Nurses' Health Study; OR, odds ratio; PD-1, programmed cell death 1; PD-L1, programmed cell death 1 ligand 1; PI3K, phosphatidylinositol-4,5-bisphosphate 3-kinase.

## Acknowledgments

We would like to thank the participants and staff of the Nurses' Health Study and the Health Professionals Follow-up Study for their valuable contributions as well as the following state cancer registries for their help: AL, AZ, AR, CA, CO, CT, DE, FL, GA, ID, IL, IN, IA, KY, LA, ME, MD, MA, MI, NE, NH, NJ, NY, NC, ND, OH, OK, OR, PA, RI, SC, TN, TX, VA, WA, WY. The authors assume full responsibility for analyses and interpretation of these data.

## Availability of data and materials

The datasets generated and/or analyzed in this study are not publicly available. Further information including the procedures to obtain and access data from the Nurses' Health Studies and the Health Professionals

Follow-up Study are described at <https://www.nurseshealthstudy.org/researchers/> and <https://sites.sph.harvard.edu/hpfs/for-collaborators/>.

## Disclosure statement

A.T.C. previously served as a consultant for Bayer Healthcare and Pfizer Inc. M.G. has received research funding from Bristol-Myers Squibb, Merck and Servier. J.A.M. has received institutional research funding from Boston Biomedical, has served as an advisor/consultant to Ignyta and COTA Healthcare, and served on a grant review panel for the National Comprehensive Cancer Network funded by Taiho Pharmaceutical. This study was not funded by any of these commercial entities.

## Role of the sponsors

The funders had no role in design and conduct of the study; collection, management, analysis, and interpretation of the data; and preparation, review, or approval of the manuscript.

## Use of standardized official symbols

We use HUGO (Human Genome Organization)-approved official symbols (or root symbols) for genes and gene products, including AKT, BRAF, CACNA1G, CD274, CDKN2A, CRABP1, IGF2, KRAS, MLH1, MTOR, NEUROG1, PDCD1, PIK3CA, PTEN, PTGS2, RUNX3, and

SOCS1; all of which are described at [www.genenames.org](http://www.genenames.org). Gene symbols are italicized whereas symbols for gene products are not italicized.

## Funding

This work was supported by U.S. National Institutes of Health (NIH) grants (P01 CA87969 to M.J. Stampfer; UM1 CA186107 to M.J. Stampfer; P01 CA55075 to W.C. Willett; UM1 CA167552 to W.C. Willett; U01 CA167552 to L.A. Mucci and W.C. Willett; P50 CA127003 to N. Bardeesy and B.M. Wolpin; R01 CA137178 to A.T.C.; K24 DK098311 to A.T.C.; R35 CA197735 to S.O.; R01 CA151993 to S.O.; R00 CA215314 to M.S.; and K07 CA188126 to X.Z.); by Nodal Award (2016-02) from the Dana-Farber Harvard Cancer Center (to S.O.); by the Stand Up to Cancer Colorectal Cancer Dream Team Translational Research Grant (SU2C-AACR-DT22-17 to M.G.), administered by the American Association for Cancer Research, a scientific partner of SU2C; by the American Cancer Society Mentored Research Scholar Grant (MRS-G-17-220-01 - NEC to M.S.); and by grants from the Project P Fund, The Friends of the Dana-Farber Cancer Institute, Bennett Family Fund, and the Entertainment Industry Foundation through National Colorectal Cancer Research Alliance. K.A. and T.U. were supported by a grant from Overseas Research Fellowship (201860083 to K.A. and 201960541 to T.U.) from Japan Society for the Promotion of Science. K.H. and T.U. were supported by fellowship grants from the Uehara Memorial Foundation. T.U. was supported by fellowship grants from Yasuda Medical Foundation. K. H. was supported by the Mitsukoshi Health and Welfare Foundation. A. T.C. is a Stuart and Suzanne Steele MGH Research Scholar. J. A.M. research is supported by the Douglas Gray Woodruff Chair fund, the Guo Shu Shi Fund, Anonymous Family Fund for Innovations in Colorectal Cancer, P fund and the George Stone Family Foundation. The content is solely the responsibility of the authors and does not necessarily represent the official views of NIH; American Association for Cancer Research; Japan Society for the Promotion of Science [201960541]; Japan Society for the Promotion of Science; the Douglas Gray Woodruff Chair fund, the Guo Shu Shi Fund, Anonymous Family Fund for Innovations in Colorectal Cancer, P fund and the George Stone Family Foundation; Mitsukoshi Health and Welfare Foundation; Dana-Farber Harvard Cancer Center; Uehara Memorial Foundation; Uehara Memorial Foundation; Yasuda Memorial Medical Foundation;

## ORCID

Juha P. Väyrynen  <http://orcid.org/0000-0002-8683-2996>

## References

1. Yearley JH, Gibson C, Yu N, Moon C, Murphy E, Juco J, Lunceford J, Cheng J, Chow LQM, Seiwert TY, et al. PD-L2 expression in human tumors: relevance to Anti-PD-1 therapy in cancer. *Clin Cancer Res.* 2017;23(12):3158–3167. doi:10.1158/1078-0432.CCR-16-1761.
2. Tunger A, Sommer U, Wehner R, Kubasch AS, Grimm MO, Bachmann MP, Platzbecker U, Bornhäuser M, Baretton G, Schmitz M. The evolving landscape of biomarkers for anti-PD-1 or ANTI-PD-L1 therapy. *J Clin Med.* 2019;8(10):1534.
3. Lastwika KJ, Wilson W, Li QK, Norris J, Xu H, Ghazarian SR, Kitagawa H, Kawabata S, Taube JM, Yao S, et al. Control of PD-L1 expression by oncogenic activation of the AKT-mTOR pathway in non-small cell lung cancer. *Cancer Res.* 2016;76(2):227–238. doi:10.1158/0008-5472.CAN-14-3362.
4. Mittendorf EA, Philips AV, Meric-Bernstam F, Qiao N, Wu Y, Harrington S, Su X, Wang Y, Gonzalez-Angulo AM, Akcakanat A, et al. PD-L1 expression in triple-negative breast cancer. *Cancer Immunol Res.* 2014;2(4):361–370. doi:10.1158/2326-6066.CIR-13-0127.
5. Jiang X, Zhou J, Giobbie-Hurder A, Wargo J, Hodi FS. The activation of MAPK in melanoma cells resistant to BRAF inhibition promotes PD-L1 expression that is reversible by MEK and PI3K



- inhibition. *Clin Cancer Res.* 2013;19(3):598–609. doi:10.1158/1078-0432.CCR-12-2731.
6. Koveitypour Z, Panahi F, Vakilian M, Peymani M, Seyed Forootan F, Nasr Esfahani MH, Ghaedi K. Signaling pathways involved in colorectal cancer progression. *Cell Biosci.* 2019;9(1):97. doi:10.1186/s13578-019-0361-4.
  7. Papadatos-Pastos D, Rabbie R, Ross P, Sarker D. The role of the PI3K pathway in colorectal cancer. *Crit Rev Oncol Hematol.* 2015;94(1):18–30. doi:10.1016/j.critrevonc.2014.12.006.
  8. Cretella D, Digiacomo G, Giovannetti E, Cavazzoni A. PTEN Alterations As A Potential Mechanism For Tumor Cell Escape from PD-1/PD-L1 inhibition. *Cancers (Basel).* 2019;11(9):1318.
  9. Molinari F, Frattini M. Functions and regulation of the PTEN gene in colorectal cancer. *Front Oncol.* 2013;3:326.
  10. Rosty C, Young JP, Walsh MD, Clendenning M, Sanderson K, Walters RJ, Parry S, Jenkins MA, Win AK, Southey MC, et al. PIK3CA activating mutation in colorectal carcinoma: associations with molecular features and survival. *PLoS One.* 2013;8(6):e65479. doi:10.1371/journal.pone.0065479.
  11. Yamauchi M, Morikawa T, Kuchiba A, Imamura Y, Qian ZR, Nishihara R, Liao X, Waldron L, Hoshida Y, Huttenhower C, et al. Assessment of colorectal cancer molecular features along bowel subsites challenges the conception of distinct dichotomy of proximal versus distal colorectum. *Gut.* 2012;61(6):847–854. doi:10.1136/gutjnl-2011-300865.
  12. Liao X, Morikawa T, Lochhead P, Imamura Y, Kuchiba A, Yamauchi M, Nosho K, Qian ZR, Nishihara R, Meyerhardt JA, et al. Prognostic role of PIK3CA mutation in colorectal cancer: cohort study and literature review. *Clin Cancer Res.* 2012;18(8):2257–2268. doi:10.1158/1078-0432.CCR-11-2410.
  13. Ogino S, Liao X, Imamura Y, Yamauchi M, McCleary NJ, Ng K, Niedzwiecki D, Saltz LB, Mayer RJ, Whittom R, et al. Predictive and prognostic analysis of PIK3CA mutation in stage III colon cancer intergroup trial. *J Natl Cancer Inst.* 2013;105(23):1789–1798. doi:10.1093/jnci/djt298.
  14. Vogelaar FJ, Erning FNV, Reimers MS, Van Der Linden H, Pruijt H, Van Den Brule AJC, Bosscha K. The prognostic value of microsatellite instability, KRAS, BRAF and PIK3CA mutations in stage II colon cancer patients. *Mol Med.* 2016;21(1):1038–1046. doi:10.2119/molmed.2015.00220.
  15. Mei ZB, Duan CY, Li CB, Cui L, Ogino S. Prognostic role of tumor PIK3CA mutation in colorectal cancer: a systematic review and meta-analysis. *Ann Oncol.* 2016;27(10):1836–1848. doi:10.1093/annonc/mdw264.
  16. Manceau G, Marisa L, Boige V, Duval A, Gaub M-P, Milano G, Selves J, Olschwang S, Jooste V, le Grain M, et al. PIK3CA mutations predict recurrence in localized microsatellite stable colon cancer. *Cancer Med.* 2015;4(3):371–382. doi:10.1002/cam4.370.
  17. Ogino S, Nosho K, Kirkner GJ, Shima K, Irahara N, Kure S, Chan AT, Engelman JA, Kraft P, Cantley LC, et al. PIK3CA mutation is associated with poor prognosis among patients with curatively resected colon cancer. *J Clin Oncol.* 2009;27(9):1477–1484. doi:10.1200/JCO.2008.18.6544.
  18. Zumwalt TJ, Wodarz D, Komarova NL, Toden S, Turner J, Cardenas J, Burn J, Chan AT, Boland CR, Goel A, et al. Aspirin-Induced chemoprevention and response kinetics are enhanced by PIK3CA mutations in colorectal cancer cells. *Cancer Prev Res (Phila).* 2017;109(3):208–218. doi:10.1158/1940-6207.CAPR-16-0175.
  19. Gu M, Nishihara R, Chen Y, Li W, Shi Y, Masugi Y, Hamada T, Kosumi K, Liu L, Da Silva A, et al. Aspirin exerts high anti-cancer activity in PIK3CA-mutant colon cancer cells. *Oncotarget.* 2017;8(50):87379–87389. doi:10.18632/oncotarget.20972.
  20. Paleari L, Puntoni M, Clavarezza M, DeCensi M, Cuzick J, DeCensi A. PIK3CA mutation, aspirin use after diagnosis and survival of colorectal cancer: a systematic review and meta-analysis of epidemiological studies. *Clin Oncol (R Coll Radiol).* 2016;28(5):317–326. doi:10.1016/j.clon.2015.11.008.
  21. Domingo E, Church DN, Sieber O, Ramamoorthy R, Yanagisawa Y, Johnstone E, Davidson B, Kerr DJ, Tomlinson IPM, Midgley R, et al. Evaluation of PIK3CA mutation as a predictor of benefit from nonsteroidal anti-inflammatory drug therapy in colorectal cancer. *J Clin Oncol.* 2013;31(34):4297–4305. doi:10.1200/JCO.2013.50.0322.
  22. Liao X, Lochhead P, Nishihara R, Morikawa T, Kuchiba A, Yamauchi M, Imamura Y, Qian ZR, Baba Y, Shima K, et al. Aspirin use, tumor PIK3CA mutation, and colorectal-cancer survival. *N Engl J Med.* 2012;367(17):1596–1606. doi:10.1056/NEJMoa1207756.
  23. Berntsson J, Eberhard J, Nodin B, Leandersson K, Larsson AH, Jirstrom K. Expression of programmed cell death protein 1 (PD-1) and its ligand PD-L1 in colorectal cancer: relationship with sidedness and prognosis. *Oncoimmunology.* 2018;7:e1465165. doi:10.1080/2162402X.2018.1465165.
  24. Masugi Y, Nishihara R, Hamada T, Song M, Da Silva A, Kosumi K, Gu M, Shi Y, Li W, Liu L, et al. Tumor PDCD1LG2 (PD-L2) expression and the lymphocytic reaction to colorectal cancer. *Cancer Immunol Res.* 2017;5(11):1046–1055. doi:10.1158/2326-6066.CIR-17-0122.
  25. Li Y, Liang L, Dai W, Cai G, Xu Y, Li X, Li Q, Cai S. Prognostic impact of programmed cell death-1 (PD-1) and PD-ligand 1 (PD-L1) expression in cancer cells and tumor infiltrating lymphocytes in colorectal cancer. *Mol Cancer.* 2016;15(1):55. doi:10.1186/s12943-016-0539-x.
  26. Song M, Chen D, Lu B, Wang C, Zhang J, Huang L, Wang X, Timmons CL, Hu J, Liu B, et al. PTEN loss increases PD-L1 protein expression and affects the correlation between PD-L1 expression and clinical parameters in colorectal cancer. *PLoS One.* 2013;8(6):e65821. doi:10.1371/journal.pone.0065821.
  27. Droeser RA, Hirt C, Viehl CT, Frey DM, Nebiker C, Huber X, Zlobec I, Eppenberger-Castori S, Tzankov A, Rosso R, et al. Clinical impact of programmed cell death ligand 1 expression in colorectal cancer. *Eur J Cancer.* 2013;49(9):2233–2242. doi:10.1016/j.ejca.2013.02.015.
  28. Hamada T, Cao Y, Qian ZR, Masugi Y, Nowak JA, Yang J, Song M, Mima K, Kosumi K, Liu L, et al. Aspirin use and colorectal cancer survival according to tumor CD274 (Programmed Cell Death 1 Ligand 1) expression status. *J Clin Oncol.* 2017;35(16):1836–1844. doi:10.1200/JCO.2016.70.7547.
  29. Hutchinson L. Immunotherapy: evading immune escape: synergy of COX and immune-checkpoint inhibitors. *Nat Rev Clin Oncol.* 2015;12:622.
  30. Salvatore L, Calegari MA, Loupakis F, Fassin M, Di Stefano B, Bensi M, Bria E, Tortora G. PTEN in colorectal cancer: shedding light on its role as predictor and target. *Cancers (Basel).* 2019;11(11):1765.
  31. Crane CA, Panner A, Murray JC, Wilson SP, Xu H, Chen L, Simko JP, Waldman FM, Pieper RO, Parsa AT, et al. PI(3) kinase is associated with a mechanism of immunoresistance in breast and prostate cancer. *Oncogene.* 2009;28(2):306–312. doi:10.1038/onc.2008.384.
  32. Parsa AT, Waldron JS, Panner A, Crane CA, Parney IF, Barry JJ, Cachola KE, Murray JC, Tihan T, Jensen MC, et al. Loss of tumor suppressor PTEN function increases B7-H1 expression and immunoresistance in glioma. *Nat Med.* 2007;13(1):84–88. doi:10.1038/nm1517.
  33. Oczko-Wojciechowska M, Pfeifer A, Jarzab M, Swierniak M, Rusinek D, Tyszkiewicz T, Kowalska M, Chmielik E, Zembala-Nozynska E, Czarniecka A, et al. Impact of the tumor microenvironment on the gene expression profile in papillary thyroid cancer. *Pathobiology.* 2020;87(Suppl. 2):143–154. doi:10.1159/000507223.
  34. Gil J, Ramsey D, Pawlowski P, Szmida E, Leszczynski P, Bebenek M, Sasiadek MM. The influence of tumor microenvironment on ATG4D gene expression in colorectal cancer patients. *Med Oncol.* 2018;35(12):159. doi:10.1007/s12032-018-1220-6.
  35. Nishihara R, Wu K, Lochhead P, Morikawa T, Liao X, Qian ZR, Inamura K, Kim SA, Kuchiba A, Yamauchi M, et al. Long-term colorectal-cancer incidence and mortality after lower endoscopy.

- N Engl J Med. 2013;369(12):1095–1105. doi:10.1056/NEJMoa1301969.
36. Ogino S, Noshro K, Irahara N, Meyerhardt JA, Baba Y, Shima K, Glickman JN, Ferrone CR, Mino-Kenudson M, Tanaka N, et al. Lymphocytic reaction to colorectal cancer is associated with longer survival, independent of lymph node count, microsatellite instability, and CpG island methylator phenotype. *Clin Cancer Res.* 2009;15(20):6412–6420. doi:10.1158/1078-0432.CCR-09-1438.
  37. Yamauchi M, Lochhead P, Morikawa T, Huttenhower C, Chan AT, Giovannucci E, Fuchs C, Ogino S. Colorectal cancer: a tale of two sides or a continuum?: figure 1. *Gut.* 2012;61(6):794–797. doi:10.1136/gutjnl-2012-302014.
  38. Ogino S, Noshro K, Kirkner GJ, Kawasaki T, Meyerhardt JA, Loda M, Giovannucci EL, Fuchs CS. CpG island methylator phenotype, microsatellite instability, BRAF mutation and clinical outcome in colon cancer. *Gut.* 2009;58(1):90–96. doi:10.1136/gut.2008.155473.
  39. Irahara N, Noshro K, Baba Y, Shima K, Lindeman NI, Hazra A, Scherhammer ES, Hunter DJ, Fuchs CS, Ogino S. Precision of pyrosequencing assay to measure LINE-1 methylation in colon cancer, normal colonic mucosa, and peripheral blood cells. *J Mol Diagn.* 2010;12(2):177–183. doi:10.2353/jmoldx.2010.090106.
  40. Noshro K, Irahara N, Shima K, Kure S, Kirkner GJ, Scherhammer ES, Hazra A, Hunter DJ, Quackenbush J, Spiegelman D, et al. Comprehensive biostatistical analysis of CpG island methylator phenotype in colorectal cancer using a large population-based sample. *PLoS One.* 2008;3(11):e3698. doi:10.1371/journal.pone.0003698.
  41. Ogino S, Kawasaki T, Brahmandam M, Cantor M, Kirkner GJ, Spiegelman D, Makrigiorgos GM, Weisenberger DJ, Laird PW, Loda M, et al. Precision and performance characteristics of bisulfite conversion and real-time PCR (MethyLight) for quantitative DNA methylation analysis. *J Mol Diagn.* 2006;8(2):209–217. doi:10.2353/jmoldx.2006.050135.
  42. Imamura Y, Lochhead P, Yamauchi M, Kuchiba A, Qian Z, Liao X, Nishihara R, Jung S, Wu K, Noshro K, et al. Analyses of clinicopathological, molecular, and prognostic associations of KRAS codon 61 and codon 146 mutations in colorectal cancer: cohort study and literature review. *Mol Cancer.* 2014;13(1):135. doi:10.1186/1476-4598-13-135.
  43. Ogino S, Kawasaki T, Brahmandam M, Yan L, Cantor M, Namgyal C, Mino-Kenudson M, Lauwers GY, Loda M, Fuchs CS. Sensitive sequencing method for KRAS mutation detection by Pyrosequencing. *J Mol Diagn.* 2005;7(3):413–421. doi:10.1016/S1525-1578(10)60571-5.
  44. Chan AT, Ogino S, Fuchs CS. Aspirin and the risk of colorectal cancer in relation to the expression of COX-2. *N Engl J Med.* 2007;356(21):2131–2142. doi:10.1056/NEJMoa067208.
  45. Fujiyoshi K, Bruford EA, Mroz P, Sims CL, O'Leary TJ, Lo AWI, Chen N, Patel NR, et al. Opinion: standardizing gene product nomenclature—a call to action. *Proc Natl Acad Sci U S A.* 2021;118(3):e2025207118.
  46. Masugi Y, Nishihara R, Yang J, Mima K, Da Silva A, Shi Y, Inamura K, Cao Y, Song M, Nowak JA, et al. Tumour CD274 (PD-L1) expression and T cells in colorectal cancer. *Gut.* 2017;66(8):1463–1473. doi:10.1136/gutjnl-2016-311421.
  47. Lotan TL, Gurel B, Sutcliffe S, Esopi D, Liu W, Xu J, Hicks JL, Park BH, Humphreys E, Partin AW, et al. PTEN protein loss by immunostaining: analytic validation and prognostic indicator for a high risk surgical cohort of prostate cancer patients. *Clin Cancer Res.* 2011;17(20):6563–6573. doi:10.1158/1078-0432.CCR-11-1244.
  48. Benjamin DJ, Berger JO, Johannesson M, Nosek BA, Wagenmakers EJ, Berk R, Bollen KA, Brembs B, Brown L, Camerer C, et al. Redefine statistical significance. *Nat Hum Behav.* 2018;2:6–10.
  49. Haruki K, Kosumi K, Hamada T, Twombly TS, Väyrynen JP, Kim SA, Masugi Y, Qian ZR, Mima K, Baba Y, et al. Association of autophagy status with amount of fusobacterium nucleatum in colorectal cancer. *J Pathol.* 2020;250(4):397–408. doi:10.1002/path.5381.
  50. Liu L, Nevo D, Nishihara R, Cao Y, Song M, Twombly TS, Chan AT, Giovannucci EL, VanderWeele TJ, Wang M, et al. Utility of inverse probability weighting in molecular pathological epidemiology. *Eur J Epidemiol.* 2018;33(4):381–392. doi:10.1007/s10654-017-0346-8.
  51. Inaguma S, Lasota J, Wang Z, Felisiak-Golabek A, Ikeda H, Miettinen M. Clinicopathologic profile, immunophenotype, and genotype of CD274 (PD-L1)-positive colorectal carcinomas. *Mod Pathol.* 2017;30(2):278–285. doi:10.1038/modpathol.2016.185.
  52. Mayer IA, Arteaga CL. The PI3K/AKT pathway as a target for cancer treatment. *Annu Rev Med.* 2016;67(1):11–28. doi:10.1146/annurev-med-062913-051343.
  53. Chida K, Kawazoe A, Kawazu M, Suzuki T, Nakamura Y, Nakatsura T, Kuwata T, Ueno T, Kuboki Y, Kotani D, et al. A low tumor mutational burden and PTEN mutations are predictors of a negative response to PD-1 blockade in MSI-H/dMMR gastrointestinal tumors. *Clin Cancer Res.* 2021;27(13):3714–3724. doi:10.1158/1078-0432.CCR-21-0401.
  54. O'Donnell JS, Massi D, Teng MWL, Mandala M. PI3K-AKT-mTOR inhibition in cancer immunotherapy, redux. *Semin Cancer Biol.* 2018;48:91–103. doi:10.1016/j.semcancer.2017.04.015.
  55. Ni JM, Ni AP. Landscape of PD-1/PD-L1 regulation and targeted immunotherapy. *Chin Med Sci J.* 2018;33:174–182.
  56. Balan M, Mier y Teran E, Waaga-Gasser AM, Gasser M, Choueiri TK, Freeman G, Pal S. Novel roles of c-Met in the survival of renal cancer cells through the regulation of HO-1 and PD-L1 expression. *J Biol Chem.* 2015;290(13):8110–8120. doi:10.1074/jbc.M114.612689.
  57. Peng W, Chen JQ, Liu C, Malu S, Creasy C, Tetzlaff MT, Xu C, McKenzie JA, Zhang C, Liang X. Loss of PTEN promotes resistance to T cell-mediated immunotherapy. *Cancer Discov.* 2016;6(2):202–216. doi:10.1158/2159-8290.CD-15-0283.
  58. Llosa NJ, Cruise M, Tam A, Wicks EC, Hechenbleikner EM, Taube JM, Blosser RL, Fan H, Wang H, Lubner BS, et al. The vigorous immune microenvironment of microsatellite instable colon cancer is balanced by multiple counter-inhibitory checkpoints. *Cancer Discov.* 2015;5(1):43–51. doi:10.1158/2159-8290.CD-14-0863.
  59. Bates SE, Longo DL. Epigenetic Therapies for Cancer. *N Engl J Med.* 2020;383(7):650–663. doi:10.1056/NEJMra1805035.
  60. Akimoto N, Zhao M, Ugai T, Zhong R, Lau MC, Fujiyoshi K, Kishikawa J, Haruki K, Arima K, Twombly TS, et al. Tumor Long Interspersed Nucleotide Element-1 (LINE-1) hypomethylation in relation to age of colorectal cancer diagnosis and prognosis. *Cancers (Basel).* 2021;13(9):2016.
  61. Swets M, Zaalberg A, Boot A, van Wezel T, Frouws MA, Bastiaannet E, Gelderblom H, van de Velde CJ, Kuppen PJ. Tumor LINE-1 methylation level in association with survival of patients with stage II colon cancer. *Int J Mol Sci.* 2016;18(1):36.
  62. Vedeld HM, Merok M, Jeanmougin M, Danielsen SA, Honne H, Presthus GK, Svindland A, Sjo OH, Hektoen M, Eknaes M, et al. CpG island methylator phenotype identifies high risk patients among microsatellite stable BRAF mutated colorectal cancers. *Int J Cancer.* 2017;141(5):967–976. doi:10.1002/ijc.30796.
  63. Levine AJ, Phipps AI, Baron JA, Buchanan DD, Ahnen DJ, Cohen SA, Lindor NM, Newcomb PA, Rosty C, Haile RW, et al. Clinicopathologic risk factor distributions for MLH1 promoter region methylation in CIMP-Positive tumors. *Cancer Epidemiol Biomarkers Prev.* 2016;25(1):68–75. doi:10.1158/1055-9965.EPI-15-0935.
  64. Inamura K. Colorectal cancers: an update on their molecular pathology. *Cancers (Basel).* 2018;10(1):26.
  65. Advani SM, Advani P, DeSantis SM, Brown D, VonVille HM, Lam M, Loree JM, Mehrvarz Sarshekeh A, Bressler J, Lopez DS, et al. Clinical, pathological, and molecular characteristics of CpG island methylator phenotype in colorectal cancer: a systematic review and meta-analysis. *Transl Oncol.* 2018;11(5):1188–1201. doi:10.1016/j.tranon.2018.07.008.

66. Tsai JH, Jeng YM, Yuan CT, Lin Y-L, Cheng M-L, Liao J-Y. Traditional serrated pathway-associated colorectal carcinoma: morphologic reappraisal of serrated morphology, tumor budding, and identification of frequent PTEN alterations. *Am J Surg Pathol.* 2019;43(8):1042–1051. doi:10.1097/PAS.0000000000001274.
67. Akimoto N, Ugai T, Zhong R, Hamada T, Fujiyoshi K, Giannakis M, Wu K, Cao Y, Ng K, Ogino S. Rising incidence of early-onset colorectal cancer — a call to action. *Nat Rev Clin Oncol.* 2021;18(4):230–243. doi:10.1038/s41571-020-00445-1.
68. Ogino S, Nowak JA, Hamada T, Milner DA, Nishihara R. Insights into pathogenic interactions among environment, host, and tumor at the crossroads of molecular pathology and epidemiology. *Annu Rev Pathol.* 2019;14(1):83–103. doi:10.1146/annurev-pathmechdis-012418-012818.
69. Haruki K, Kosumi K, Li P, Arima K, Väyrynen JP, Lau MC, Twombly TS, Hamada T, Glickman JN, Fujiyoshi K, et al. An integrated analysis of lymphocytic reaction, tumour molecular characteristics and patient survival in colorectal cancer. *Br J Cancer.* 2020;122(9):1367–1377. doi:10.1038/s41416-020-0780-3.