



# Defining Unmet Need Following Lenalidomide Refractoriness: Real-World Evidence of Outcomes in Patients With Multiple Myeloma

## OPEN ACCESS

### Edited by:

Matteo Franchi,  
University of Milano-Bicocca, Italy

### Reviewed by:

Stefan Knop,  
Julius Maximilian University of  
Würzburg, Germany  
Alessandra Romano,  
University of Catania, Italy  
Claudio Cerchione,  
Istituto Scientifico Romagnolo per lo  
Studio e il Trattamento dei Tumori  
(IRCCS), Italy

### \*Correspondence:

Catherine S. Y. Lecat  
catherine.lecat@nhs.net

<sup>†</sup>These authors have contributed  
equally to this work and  
share first authorship

### Specialty section:

This article was submitted to  
Hematologic Malignancies,  
a section of the journal  
Frontiers in Oncology

**Received:** 30 April 2021

**Accepted:** 07 July 2021

**Published:** 21 July 2021

### Citation:

Lecat CSY, Taube JB,  
Wilson W, Carmichael J,  
Parrish C, Wallis G, Kyriakou C,  
Lee L, Mahmood S, Papanikolaou X,  
Rabin NK, Sive J, Wechalekar AD,  
Yong K, Cook G and Popat R (2021)  
Defining Unmet Need Following  
Lenalidomide Refractoriness: Real-  
World Evidence of Outcomes in  
Patients With Multiple Myeloma.  
*Front. Oncol.* 11:703233.  
doi: 10.3389/fonc.2021.703233

Catherine S. Y. Lecat<sup>1,2\*†</sup>, Jessica B. Taube<sup>1†</sup>, William Wilson<sup>3</sup>, Jonathan Carmichael<sup>4,5</sup>,  
Christopher Parrish<sup>4</sup>, Gabriel Wallis<sup>1</sup>, Charalampia Kyriakou<sup>1</sup>, Lydia Lee<sup>2</sup>,  
Shameem Mahmood<sup>1</sup>, Xenofon Papanikolaou<sup>1</sup>, Neil K. Rabin<sup>1</sup>, Jonathan Sive<sup>1</sup>,  
Ashutosh D. Wechalekar<sup>1</sup>, Kwee Yong<sup>2</sup>, Gordon Cook<sup>4,5</sup> and Rakesh Popat<sup>1</sup>

<sup>1</sup> Department of Haematology, University College London Hospitals NHS Foundation Trust, London, United Kingdom,

<sup>2</sup> Department of Haematology, University College London Cancer Institute, London, United Kingdom, <sup>3</sup> Department of  
Oncology, Cancer Research UK & UCL Cancer Trials Centre, University College London, London, United Kingdom, <sup>4</sup> Leeds  
Cancer Centre, Leeds Teaching Hospitals NHS Trust, Leeds, United Kingdom, <sup>5</sup> Department of Oncology, The National  
Institute for Health Research Leeds In Vitro Diagnostics Co-operative (NIHR Leeds MIC), Leeds, United Kingdom

**Background:** The treatment paradigm for multiple myeloma (MM) continues to evolve with the development of novel therapies and the earlier adoption of continuous treatments into the treatment pathway. Lenalidomide-refractory patients now represent a challenge with inferior progression free survival (PFS) reported to subsequent treatments. We therefore sought to describe the natural history of MM patients following lenalidomide in the real world.

**Methods:** This was a retrospective cohort review of patients with relapsed MM who received lenalidomide-based treatments in the U.K. Data were collected for demographics, subsequent therapies, treatment responses, survival outcomes and clinical trial enrollment.

**Results:** 198 patients received lenalidomide-based treatments at a median of 2 prior lines of therapy at a median of 41 months (range 0.5-210) from diagnosis. 114 patients (72% of 158 evaluable) became refractory to lenalidomide. The overall survival (OS) after lenalidomide failure was 14.7 months having received between 0-6 subsequent lines of therapy. Few deep responses were observed with subsequent treatments and the PFS to each further line was < 7 months. There was a steep reduction in numbers of patients able to receive further treatment, with an associated increase in number of deaths. The OS of patients progressing on lenalidomide who did not enter a clinical trial incorporating novel agents was very poor (8.8 months versus 30 months, p 0.0002), although the trials group were a biologically fitter group.

**Conclusion:** These data demonstrate the poor outcomes of patients failing lenalidomide-based treatments in the real world, the highlight need for more effective treatments.

**Keywords:** multiple myeloma, relapsed myeloma, lenalidomide, real-world data, Revlimid, survival outcomes

## INTRODUCTION

Multiple myeloma (MM) is an incurable plasma cell malignancy of the bone marrow, characterized by multiple relapses and eventual development of resistant disease. The duration of treatment response typically reduces with each line of therapy, as does the depth of response. A large retrospective study of European real-world data demonstrated that the proportion of patients able to receive treatment reduces with each subsequent line of treatment, with only 15% of patients reaching 4<sup>th</sup> line treatment and beyond (1). This is likely due to resistant disease, toxicity burden from repeated therapies and age-related comorbidities. However, recent novel therapy approvals and the development of more optimal drug combinations have translated into improved clinical outcomes, with an expected increase in number of patients receiving later lines of therapy.

Lenalidomide, an immunomodulatory drug (IMiD), is a key backbone agent in the treatment of MM and commonly used as frontline treatment for both transplant eligible and ineligible patients either in combination with proteasome inhibitors (PI), alkylators and/or CD38 monoclonal antibodies or as a doublet with corticosteroids according to performance status (2, 3). Additionally, it is used as maintenance following autologous stem cell transplant (4, 5). In some countries including the U.K., it continues to be used for relapsed MM (6–9) [Supplementary Figure 1, (10–13)].

As lenalidomide is typically continued until disease progression or intolerance, most patients become lenalidomide-refractory. Emerging data from sub-group analysis of clinical trials suggest that the treatment response and progression free survival (PFS) of lenalidomide-refractory patients are inferior to those that are sensitive (14–20). Real-world data from RRMM patients who were refractory to an IMiD also demonstrated poor outcomes [Supplementary Figure 2, (21–23)]. This highlights a subgroup of patients who are difficult to treat and the need for novel treatment options.

However, there may be discrepancies between clinical trial and real-world outcomes due to multiple patient-related, disease-related and treatment-related factors present between the two groups (24). The observed PFS in real-world data have been shown to be shorter than those reported in clinical trials (25), although there is a lack of clarity to the subsequent responses to treatments. Real-world data can be helpful in identifying outcomes in unselected patient groups, indeed the Connect MM registry suggested that 40% of patients would have been ineligible for inclusion in most randomized controlled trials (26). Whilst there are limitations in real-world datasets (27), they provide valuable insight into the natural history of patients that would otherwise not be known through individual clinical trials.

We therefore sought to understand the long-term outcomes of patients with relapsed or refractory MM (RRMM) following

lenalidomide failure in the real-world setting by characterizing the response and PFS to each subsequent treatment and investigating the impact of access to novel agents through clinical trials.

## MATERIALS AND METHODS

### Study Design and Patient Selection

This was a retrospective, observational chart review study involving two large U.K. myeloma specialist centers (University College London Hospitals NHS Foundation Trust (UCLH) and Leeds Teaching Hospitals NHS Trust). RRMM patients who had previously received lenalidomide between August 2006 and September 2017 were identified using the hospitals' electronic health record systems. Patients were required to have at least one response assessment with a lenalidomide-based regimen in order to be included in the study. Baseline demographic details, disease characteristics and relevant laboratory blood results were recorded. International Staging System (ISS) at diagnosis and Eastern Cooperative Oncology Group (ECOG) performance status at the time of lenalidomide use were noted. Lenalidomide-based treatment was defined as T0 and subsequent treatments were labelled as T1, T2, T3 etc. Treatment details were extracted, including clinical trial participation and treatment response based on the International Myeloma Working Group (IMWG) uniform response criteria (28).

The National Health Service Health Research Authority deemed that specific research ethical approval was not required due to the anonymous nature of the data collection (REF 704/60/88/81), and this study complied with information governance regulations at both hospitals.

### Study Objectives

The primary objective was to estimate the duration of PFS at each subsequent line of therapy after lenalidomide-based treatment. Secondary objectives included describing overall response rate [ORR, defined as  $\geq$  partial response (PR)] and response categories, overall survival (OS), and outcomes according to participation in clinical trials.

### Statistical Analysis

Qualitative variables were presented as absolute percentage for each modality and quantitative variables were described in terms of mean, median, range and standard deviation. OS was measured from treatment start until death from any cause. PFS was measured from treatment start until whichever came first of disease progression or death from any cause. Patients with no

events were censored at the data-cut off of 1<sup>st</sup> November 2017. OS and PFS were calculated and presented as Kaplan-Meier curves. Differences in OS curves between groups were evaluated with the log-rank test. Cox regression analysis was used to examine the impact of different variables (univariate and multivariate) on OS post-lenalidomide. A p-value less than 0.05 was considered statistically significant. SPSS Statistics and GraphPad Prism were used to generate figures.

## RESULTS

### Patient Characteristics

198 RRMM patients were identified to have commenced lenalidomide-based treatment between August 2006 and September 2017 and had at least one evaluable response assessment. Of these, 159 were treated in UCLH and 39 in Leeds Teaching Hospitals NHS Trust. Patient demographics are shown in **Table 1**.

### Outcomes With Lenalidomide and Overall Survival

The median age at the start of lenalidomide based therapy (T0) was 66 years (range 35-88). Patients received a median of 2 prior treatment lines before T0 (18%: 1 prior line, 82%: 2-3 prior lines). The majority of patients (n=146, 74%) received both a PI and thalidomide prior to lenalidomide therapy. Patients commenced lenalidomide at a median of 41 months from diagnosis (range 0.5-210), predominantly as doublet lenalidomide-dexamethasone regimen (n=138, 86% of 159 evaluable). Other regimens used include bortezomib-lenalidomide-dexamethasone (n=6, 4%),

ixazomib-lenalidomide-dexamethasone (n=6, 4%), lenalidomide-dexamethasone-elotuzumab (n=2, 1.5%), daratumumab-lenalidomide-dexamethasone (n=5, 3%), cyclophosphamide-lenalidomide-dexamethasone (n=1, 0.6%), and lenalidomide-conditioned reduced intensity allogeneic stem cell transplant (n=1, 0.6%). Lenalidomide doses at disease progression were available in 98 patients (**Supplementary Figure 3A**).

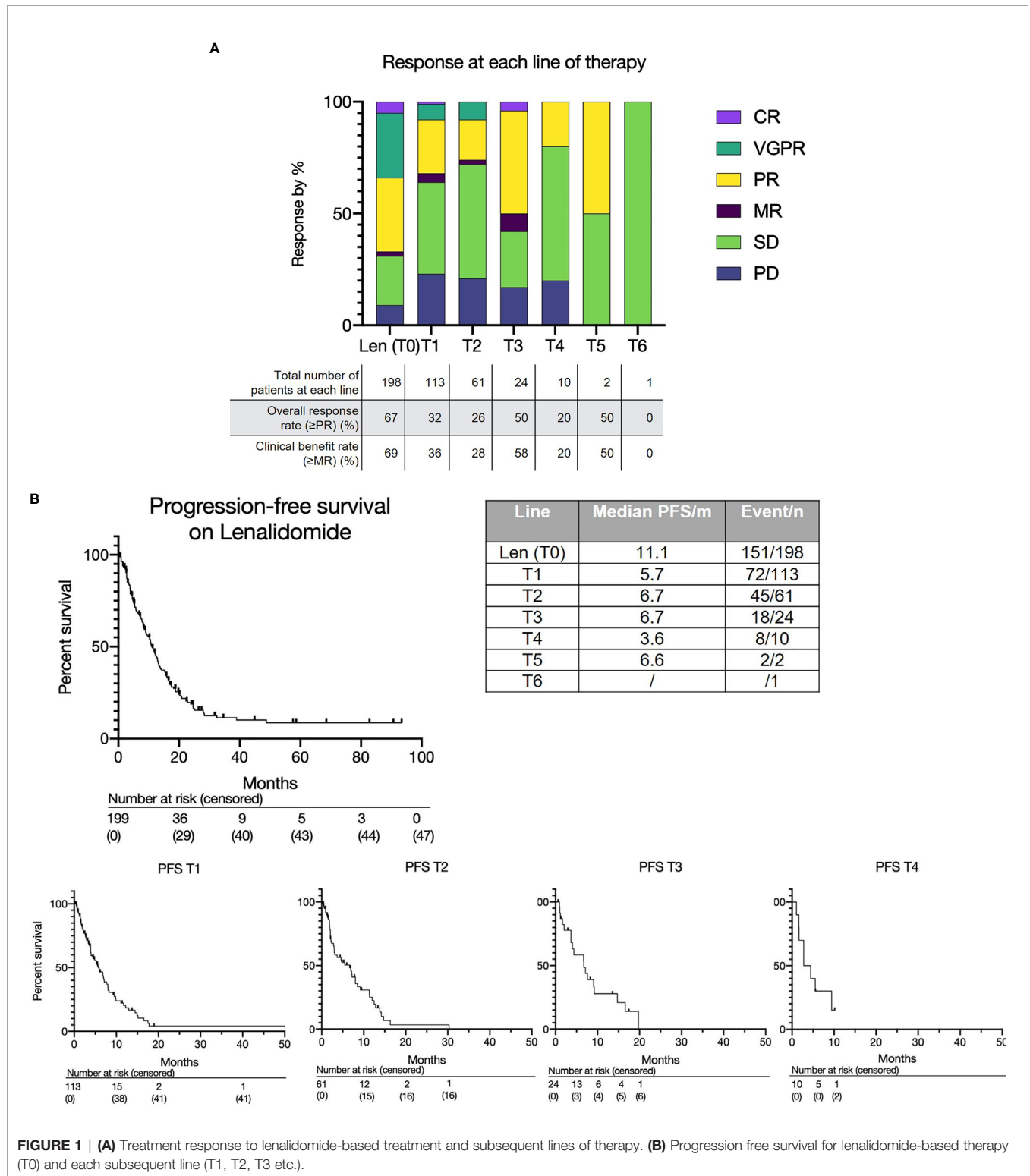
The overall response rate to lenalidomide-based treatment was 67% (n=133) (**Figure 1A**): PR, 66 (33%); very good partial response (VGPR), 58 (29%); complete response (CR), 9(5%). The median PFS from T0 was 11.1 months (range 0.2-93.4) (**Figure 1B**) and median OS was 28.4 months with a median follow up of 33.8 months (**Figure 2A**). The median OS from IMWG defined disease progression on lenalidomide or change of therapy for another reason was 14.7 months. The median OS from T1 was 11.6 months as shown in **Figure 2B**. Those who achieved a response to lenalidomide had a superior OS than those who did not (38.6 months with VGPR/PR versus 12.3 months with MR/SD/PD, p<0.0001, see **Supplementary Figure 6A**). Those who became refractory to lenalidomide also had a shorter OS than those who did not (median OS 26.2 months *versus* not reached, p<0.0001, see **Supplementary Figure 6B**). In an exploratory analysis of the sub-group that had doses of lenalidomide recorded, there was no significant difference in PFS2 or OS for those progressing on lenalidomide 25mg *vs* <25mg (PFS2: 16 months *vs* 28.4 months respectively p=0.24; OS: 36.7months *vs* 22.0 months respectively p=0.055) (**Supplementary Figure 3B**).

As of data cut-off, 41 patients had not progressed on lenalidomide, of whom 31 were still alive and 10 had died. Lenalidomide was stopped due to toxicity in 11 (7%) patients.

**TABLE 1** | Patient characteristics.

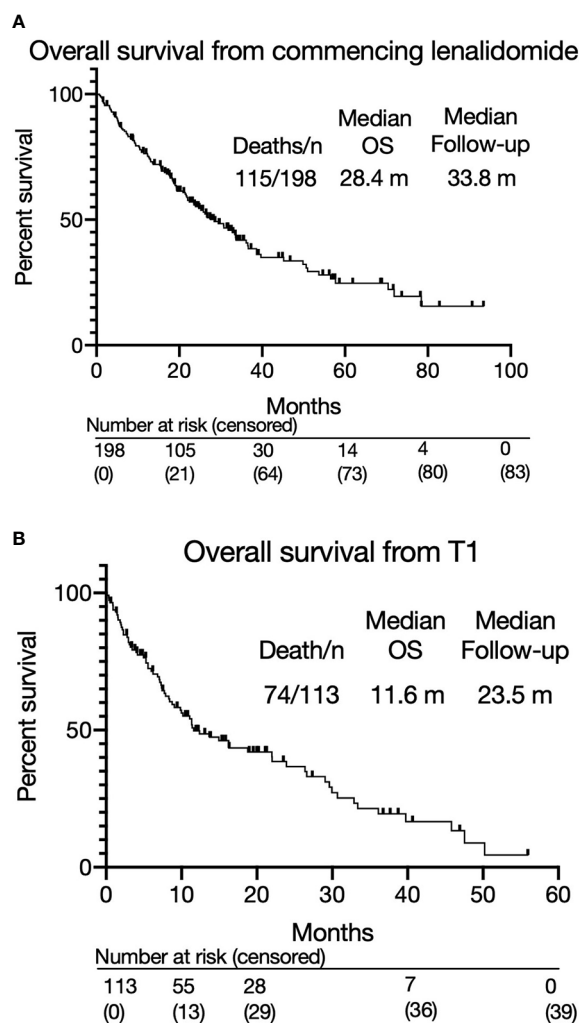
#### Patient characteristics (n = 198)

		Frequency (%)
Median age at diagnosis/years (range)		60 (33-86)
Median age at lenalidomide commencement/years (range)		66 (35-88)
Median age at progression on lenalidomide/years (range)		67 (36-92)
ISS at diagnosis	I	42 (21)
	II	46 (23)
	III	32 (16)
	Unknown	78 (40)
Cytogenetics at diagnosis (High risk defined as t(4;14), del(17/17p), t(14;16), t(14;20), gain(1q))	High risk	28 (14)
	Standard risk	80 (40)
	Unknown	90 (45)
Isotype	IgG	83 (42)
	IgA	34 (17)
	IgD	1 (0.5)
	Light chain	38 (19)
	Non-secretory	2 (1)
	Unknown	40 (20)
Treatment line at which lenalidomide was commenced	2nd	36 (18)
	3rd	110 (56)
	4th	52 (26)
Prior PI/thalidomide exposure	Prior PI and thalidomide	146 (74)
	PI only	49 (25)
	Thalidomide only	2 (1)
	Neither	1 (0.5)



The majority of patients (n=112, 71% of 158 evaluable) became refractory to lenalidomide after an initial response. Despite this, 81 (51%) continued on lenalidomide for a median of 4.14 months (range 0.1-31.5) after evidence of progressive

disease (PD). Out of these 81 patients, 24 continued on lenalidomide for more than 6 months. Overall, 31 (15.7% of 198 total population) patients progressed on lenalidomide and died without receiving any further treatment.



**FIGURE 2 | (A)** Overall survival from commencing lenalidomide-based therapy. **(B)** Overall survival from T1.

## Subsequent Lines of Therapy Post-Lenalidomide

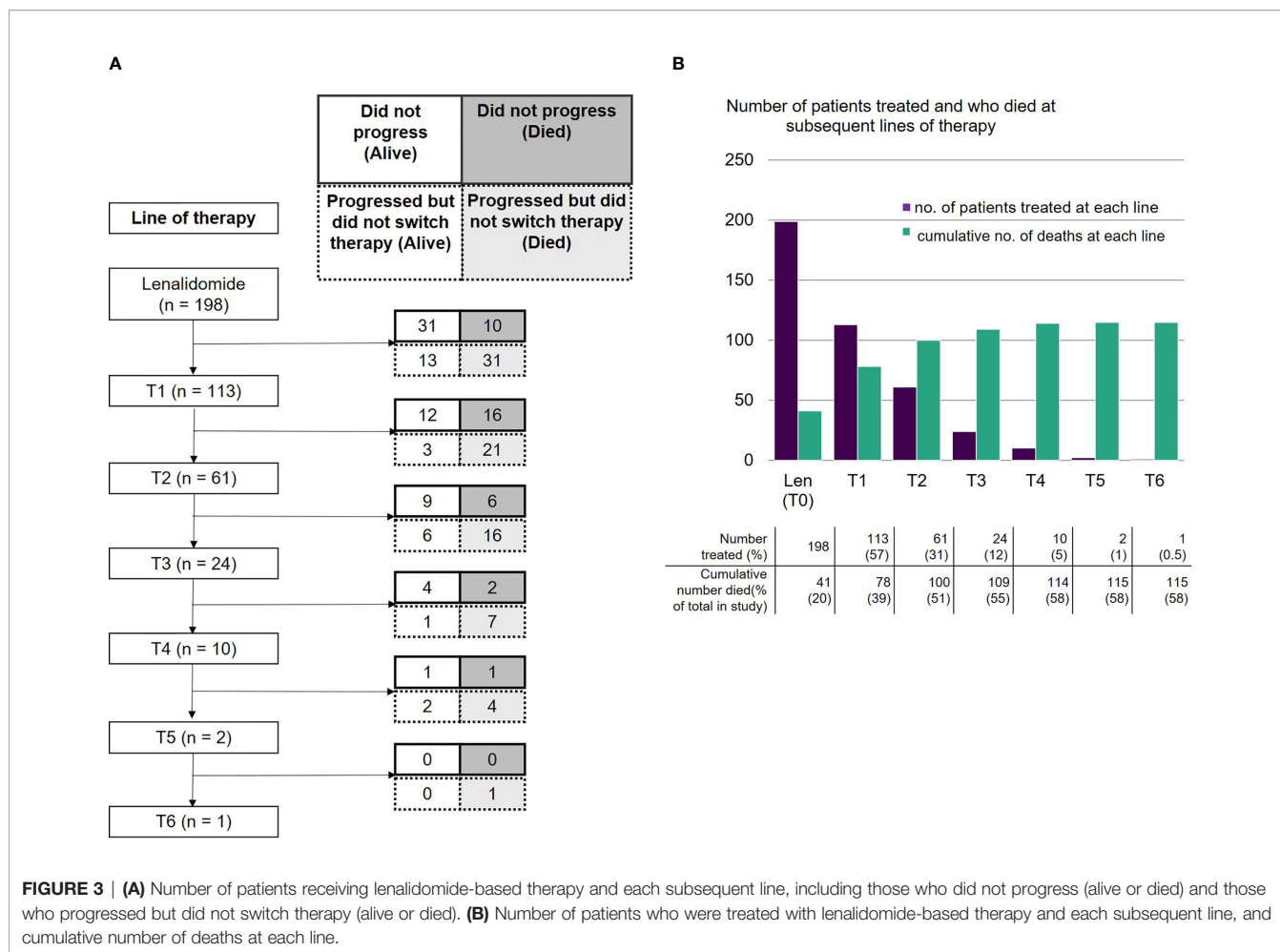
The absolute numbers of patients that were able to receive treatment diminished at each subsequent line after lenalidomide (**Figure 3A**): 113 patients (57%) received the next line of treatment after lenalidomide (T1), 61 (31%) received a further line (T2), 24 (12%) reached the subsequent line (T3) and 10 (5%) reached T4. Only two patients remained on treatment at T5 and beyond. The drop in patients able to receive subsequent lines of treatment was predominantly due to deaths during that line of treatment (**Figure 3B**). A smaller number had either PD but not yet changed treatment, or had not yet progressed. Approximately a third of subjects died at each line from T1 to T3.

A variety of other treatments were used immediately after lenalidomide. The most common was a pomalidomide containing regimen, although some were enrolled in clinical trials, or received alternative treatments including low dose palliative chemotherapy (for full list, see **Supplementary Figure 4**).

The overall and depth of response was limited at sequential lines of treatment (**Figure 1A** and **Supplementary Figure 5**). Overall response rates ( $\geq$ PR) were as follows: T1 - 32% (36/113); T2 - 26% (16/61); T3 - 50% (12/24); T4 - 20% (2/10); T5 - 50% (1/2); T6 - 0% (0/1). Most patients achieved at least stable disease; deeper responses ( $\geq$ VGPR) were rarely observed. The median PFS for each subsequent treatment was also short at 5.7 months at T1, 6.6 months at T2, 6.7 months at T3 and 3.6 months at T4 (**Figure 1B**).

As the majority (112/158, 71%) of patients were refractory to lenalidomide at the beginning of the next treatment (T1), PFS2 [from commencing lenalidomide to progression on next line of therapy (T1)] was assessed to review if there was an optimal salvage treatment for such patients, taking into consideration the duration of response to lenalidomide. The median PFS2 was similar irrespective of treatment choice (pomalidomide (n=28): 23 months, bortezomib and Panobinostat (n=12): 24 months, bendamustine (n=16): 25 months, with clinical trials (n=9):





19 months, other therapies (n=48): 25 months (p=0.89 (log rank)) (Figure 4). For those who received pomalidomide at T1, the PFS was significantly longer in those who achieved a longer (over 6 months) PFS with lenalidomide (7.04 months versus 2.78 months, p=0.038, see Supplementary Figure 7).

### Clinical Trial Participation and Overall Survival

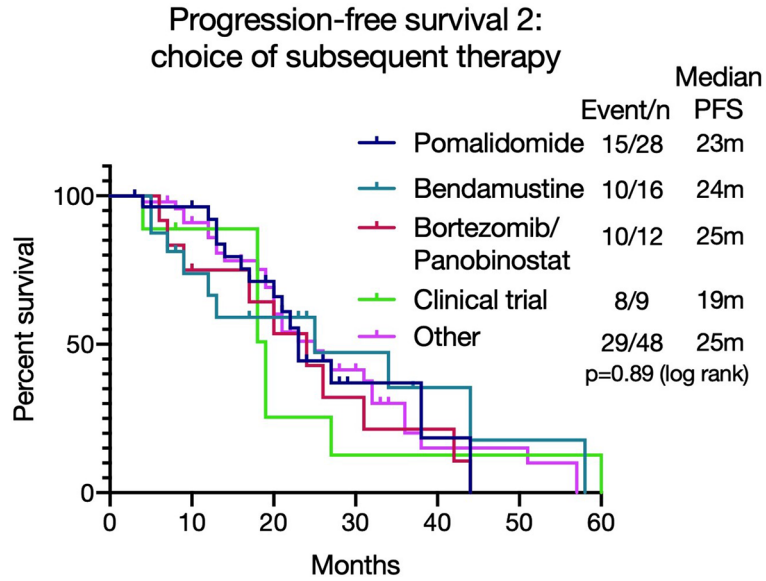
Overall, 37 patients (33%) enrolled in a clinical trial at any time after lenalidomide-based treatment. These patients had a superior median OS from T1 to those that did not (30.0 months versus 8.8 months, p=0.0002; HR 2.41, 95% CI 1.53 - 3.80, Figure 5). However, a high early mortality was noted in the non-trial group with a 6-month mortality of 91.9% (non-trial) versus 63.2% (trial) (p=0.0017, HR 3.2, 95% CI 1.5-6.7) from commencing T1. In univariate analysis of OS, C-reactive protein (CRP), platelet or neutrophil count, estimated glomerular filtration rate (eGFR, MDRD), high risk cytogenetics or patient age had no impact. However, subsequent trial enrollment, good performance status (ECOG 0-1), higher hemoglobin and higher albumin were all associated with significantly better overall survival. Significance was maintained in a multivariable model

of these 4 variables, however some were excluded from this model as they did not have complete data (Figure 6).

### DISCUSSION

The current treatment paradigm for MM involves continuous treatment until disease progression. Therefore, patients become refractory to treatments, which subsequently limit further options. Many patients become refractory to lenalidomide early on in their treatment pathway and this group have inferior outcomes compared to those who are not, as demonstrated in published studies as well as our dataset. Additionally, during the current COVID-19 pandemic some patients would have deferred ASCT and are continuing on lenalidomide instead. Understanding the natural history of patients following lenalidomide in the real world can therefore advise optimal management and help design future trials.

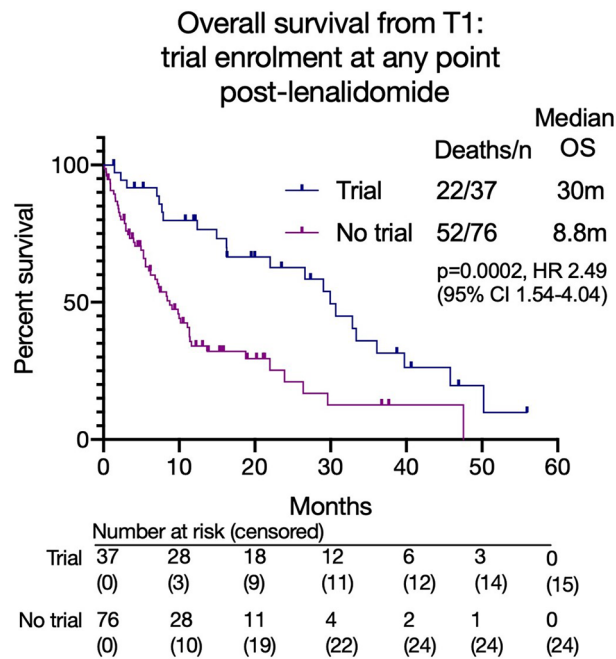
This study demonstrated that the survival after failing lenalidomide at 3<sup>rd</sup> line for relapsed MM was poor at 14.7 months, with fewer patients able to receive subsequent lines. Due to limited available data, a difference in outcomes for those



**FIGURE 4** | Progression free survival 2 [PFS2 - from commencing lenalidomide to progression on next line of therapy (T1)] based on different treatment choices after lenalidomide-based therapy. The median PFS2 was similar irrespective of treatment choice (p=0.89).

progressing on full treatment dose lenalidomide versus a lower dose was not noted. This remains an area of interest. Subsequent response rates following lenalidomide were low with very few deep responses ( $\geq$ VGPR) observed. Additionally, the median PFS for each subsequent line was less than 7 months and more patients died at each subsequent line. These observations suggest

that patients should be treated with optimal treatment as early as possible, rather than reserving treatments for later lines, as not all patients will live to reach this point. As treatment advances continue, new and effective treatments are under evaluation. The advent of B-cell maturation antigen (BCMA) targeted treatments such as Belantamab Mafodotin, chimeric antigen reception



**FIGURE 5** | Overall survival from T1 based on clinical trial enrolment at any time point after lenalidomide-based treatment.

Univariate analysis	N	HR	95% CI	P-value
Trial enrolment at any point post-Lenalidomide ( <i>trial vs no trial</i> )	37 vs 76	0.369	0.22 - 0.63	<b>0.000</b>
ECOG pre-T1 ( <i>ECOG 0-1 vs ECOG 2-4</i> )	45 vs 22	0.398	0.2 - 0.79	<b>0.008</b>
Age pre-T1	113	0.99	0.98 - 1.02	0.86
Cytogenetics at diagnosis ( <i>standard vs high-risk</i> )	89 vs 24	1.15	0.66 - 1.99	0.63
Albumin pre-T1	87	0.91	0.86 - 0.96	<b>0.004</b>
Calcium pre-T1	93	1.31	0.33 - 5.16	0.69
eGFR pre-T1	93	0.99	0.99 - 1.01	0.18
CRP pre-T1	81	1.01	0.99 - 1.01	0.25
Haemoglobin pre-T1	94	0.97	0.96 - 0.99	<b>0.001</b>
Neutrophils pre-T1	94	0.89	0.76 - 1.06	0.2
Platelets pre-T1	113	0.99	0.99 - 1.01	0.28
Multivariate analysis	34 died vs 26 censored (53 incomplete data)			
Trial enrolment at any point post - Len ( <i>trial vs no trial</i> )	23 vs 37	0.23	0.09 - 0.62	<b>0.004</b>
ECOG pre-T1 ( <i>ECOG 0-1 vs ECOG 2-4</i> )	41 vs 19	0.26	0.12 - 0.6	<b>0.001</b>
Haemoglobin pre-T1	60	0.97	0.95 - 0.99	<b>0.006</b>
Albumin pre-T1	60	0.92	0.85 - 0.99	<b>0.03</b>

**FIGURE 6** | Univariate and multivariate analyses showing impact of patient variables on overall survival from T1.

T-cells (CAR-T) and T-cell engagers as well as the incorporation of antibodies with standard to care regimens will lead to more effective salvage regimens for relapsed patients. Indeed, the ORR and durations of response to these treatments are already demonstrating improvements over historical data (29). However, these agents are not all yet routinely available and when they are licensed, they may be restricted in some countries. Therefore, it was of interest that patients enrolled into clinical trials had an improved survival to those that did not. This may be in part due to the effectiveness of the novel treatments; however, the early mortality of the non-trial patients as well as the difference in parameters such as hemoglobin and albumin suggests that the clinical trial group was potentially a biologically fitter group which is not surprising given the selection criteria for trials. Nevertheless, this data supports enrollment of patients into clinical trials to access novel treatments, although the impact could be greater if eligibility criteria were not so strict.

It is of interest that some patients continued on treatment with lenalidomide for over 6 months after IMWG defined disease progression due to lack of clinical relapse. This is relevant for treatment funders that may assume that treatments are stopped at the time of IMWG defined progression. Indeed, the clonal heterogeneity and patient variability observed in MM requires personalized decisions to be made based on the clinical phenotype of disease, genetic risk and patient preference, and

as such some patients with indolent relapses continued on treatment for longer. There was no difference in PFS2 according to immediate next treatment, and so this dataset was unable to recommend an optimal treatment for lenalidomide-refractory patients, although those that had a PFS < 6 months had a shorter PFS with pomalidomide and should be considered for a class switch to a proteasome inhibitor-based combination. Ongoing clinical trials will be critical to guide this.

This study is limited by its retrospective nature, the heterogeneity of the lenalidomide-refractory cohort who received lenalidomide in line 1 to 3, and that newer agents and combination regimens have been approved or made available since the beginning of data collection in 2006. In addition, this data focuses on the use of lenalidomide in the relapsed setting whereas today it can be used at first line. However, this historical data allows longer follow-up and the ability to describe longitudinal outcomes according to each subsequent line. It also provides interesting data describing that natural plight of MM patients that switch from treatment to treatment across multiple lines at relapse.

Of note, one large U.S. real-world multi-sites myeloma dataset where 23.8% of patients were treated with lenalidomide upfront demonstrated a median PFS of 11.5 months (25), similar to our median lenalidomide PFS of 11.1 months. Furthermore, lenalidomide remains a treatment option only in relapsed settings for some countries across the world. Another



limitation is that the number of patients in later lines of treatment are small, but this represents the eventual incurable nature of the disease despite multiple lines of treatment. Further research examining quality of life in the real world would be of interest for these patients.

In conclusion, these data provide valuable insights into the real-world outcomes of patients with relapsed refractory MM that have failed lenalidomide and highlights an unmet need for the development of more effective treatment strategies.

## DATA AVAILABILITY STATEMENT

The raw data supporting the conclusions of this article will be made available by the corresponding author upon reasonable request, without undue reservation.

## AUTHOR CONTRIBUTIONS

CL and JT are joint first authors. CL, JT, KY, GC, and RP designed the study. CP, GW, CK, LL, SM, XP, NR, JS, AW, KY,

GC, and RP provided data. CL, JT, and JC collected the data. CL, JT, and WW analyzed the data. CL, JT, and RP wrote the paper. All authors contributed to the article and approved the submitted version.

## ACKNOWLEDGMENTS

RP is supported by the National Institute for Health Research University College London Hospitals Biomedical Research Centre. GC and JC are funded by the National Institute for Health Research Leeds In Vitro Diagnostics Co-operative. The views expressed are those of the author(s) and not necessarily those of the NHS, the NIHR or the Department of Health.

## SUPPLEMENTARY MATERIAL

The Supplementary Material for this article can be found online at: <https://www.frontiersin.org/articles/10.3389/fonc.2021.703233/full#supplementary-material>

## REFERENCES

- Yong K, Delforge M, Driessen C, Fink L, Flinois A, Gonzalez-McQuire S, et al. Multiple Myeloma: Patient Outcomes in Real-World Practice. *Br J Haematol* (2016) 175(2):252–64. doi: 10.1111/bjh.14213
- Benboubker L, Dimopoulos MA, Dispenzieri A, Catalano J, Belch AR, Cavo M, et al. Lenalidomide and Dexamethasone in Transplant-Ineligible Patients With Myeloma. *N Engl J Med* (2014) 371(10):906–17. doi: 10.1056/NEJMoa1402551
- Durie BGM, Hoering A, Abidi MH, Rajkumar SV, Epstein J, Kahanic SP, et al. Bortezomib With Lenalidomide and Dexamethasone Versus Lenalidomide and Dexamethasone Alone in Patients With Newly Diagnosed Myeloma Without Intent for Immediate Autologous Stem-Cell Transplant (SWOG S0777): A Randomised, Open-Label, Phase 3 Trial. *Lancet* (2017) 389(10068):519–27. doi: 10.1016/S0140-6736(16)31594-X
- McCarthy PL, Holstein SA, Petrucci MT, Richardson PG, Hulin C, Tosi P, et al. Lenalidomide Maintenance After Autologous Stem-Cell Transplantation in Newly Diagnosed Multiple Myeloma: A Meta-Analysis. *J Clin Oncol* (2017) 35(29):3279–89. doi: 10.1200/JCO.2017.72.6679
- Jackson GH, Davies FE, Pawlyn C, Cairns DA, Striha A, Collett C, et al. Lenalidomide Maintenance Versus Observation for Patients With Newly Diagnosed Multiple Myeloma (Myeloma XI): A Multicentre, Open-Label, Randomised, Phase 3 Trial. *Lancet Oncol* (2019) 20(1):57–73. doi: 10.1016/S1470-2045(18)30687-9
- Moreau P, Masszi T, Grzasko N, Bahlis NJ, Hansson M, Pour L, et al. Oral Ixazomib, Lenalidomide, and Dexamethasone for Multiple Myeloma. *N Engl J Med* (2016) 374(17):1621–34. doi: 10.1056/NEJMoa1516282
- Dimopoulos MA, Oriol A, Nahi H, San-Miguel J, Bahlis NJ, Usmani SZ, et al. Daratumumab, Lenalidomide, and Dexamethasone for Multiple Myeloma. *N Engl J Med* (2016) 375(14):1319–31. doi: 10.1056/NEJMoa1607751
- Morgan GJ, Schey SA, Wu P, Srikanth M, Phekoo KJ, Jenner M, et al. Lenalidomide (Revlimid), in Combination With Cyclophosphamide and Dexamethasone (RCD), Is an Effective and Tolerated Regimen for Myeloma Patients. *Br J Haematol* (2007) 137(3):268–9. doi: 10.1111/j.1365-2141.2007.06538.x
- Stewart AK, Rajkumar SV, Dimopoulos MA, Masszi T, Špička I, Oriol A, et al. Carfilzomib, Lenalidomide, and Dexamethasone for Relapsed Multiple Myeloma. *N Engl J Med* (2015) 372(2):142–52. doi: 10.1056/NEJMoa1411321
- Siegel DS, Dimopoulos MA, Ludwig H, Facon T, Goldschmidt H, Jakubowiak A, et al. Improvement in Overall Survival With Carfilzomib, Lenalidomide, and Dexamethasone in Patients With Relapsed or Refractory Multiple Myeloma. *J Clin Oncol* (2018) 36(8):728–34. doi: 10.1200/JCO.2017.76.5032
- Lonial S, Dimopoulos M, Palumbo A, White D, Grosicki S, Spicka I, et al. Elotuzumab Therapy for Relapsed or Refractory Multiple Myeloma. *N Engl J Med* (2015) 373(7):621–31. doi: 10.1056/NEJMoa1505654
- Dimopoulos M, Lonial S, White D, Moreau P, Weisel K, San-Miguel J, et al. Elotuzumab, Lenalidomide, and Dexamethasone in RRRM: Final Overall Survival Results From the Phase 3 Randomized ELOQUENT-2 Study. *Blood Cancer J* (2020) 10(9):91. doi: 10.1038/s41408-020-00357-4
- Richardson PG, Kumar SK, Masszi T, Grzasko N, Bahlis NJ, Hansson M, et al. Final Overall Survival Analysis of the TOURMALINE-MM1 Phase III Trial of Ixazomib, Lenalidomide, and Dexamethasone in Patients With Relapsed or Refractory Multiple Myeloma. *J Clin Oncol* (2021) JCO2100972. doi: 10.1200/JCO.21.00972
- Richardson PG, Oriol A, Beksac M, Liberati AM, Galli M, Schjesvold F, et al. Pomalidomide, Bortezomib, and Dexamethasone for Patients With Relapsed or Refractory Multiple Myeloma Previously Treated With Lenalidomide (OPTIMISM): A Randomised, Open-Label, Phase 3 Trial. *Lancet Oncol* (2019) 20(6):781–94. doi: 10.1016/S1470-2045(19)30152-4
- Dimopoulos MA, Terpos E, Baccadoro M, Delimpasi S, Beksac M, Katodritou E, et al. APOLLO: Phase 3 Randomised Study of Subcutaneous Daratumumab Plus Pomalidomide and Dexamethasone Versus Pomalidomide and Dexamethasone Alone in Patients With Relapsed/Refractory Multiple Myeloma, in: . Available at: <https://ash.confex.com/ash/2020/webprogram/Paper135874.html> (Accessed February 23, 2021).
- Dimopoulos MA, Moreau P, Palumbo A, Joshua D, Pour L, Hájek R, et al. Carfilzomib and Dexamethasone Versus Bortezomib and Dexamethasone for Patients With Relapsed or Refractory Multiple Myeloma (ENDEAVOR): A Randomised, Phase 3, Open-Label, Multicentre Study. *Lancet Oncol* (2016) 17(1):27–38. doi: 10.1016/S1470-2045(15)00464-7
- Palumbo A, Chanan-Khan A, Weisel K, Nooka AK, Masszi T, Beksac M, et al. Daratumumab, Bortezomib, and Dexamethasone for Multiple Myeloma. *N Engl J Med* (2016) 375(8):754–66. doi: 10.1056/NEJMoa1606038
- Dimopoulos MA, Dytfeld D, Grosicki S, Moreau P, Takezako N, Hori M, et al. Elotuzumab Plus Pomalidomide and Dexamethasone for Multiple Myeloma. *N Engl J Med* (2018) 379(19):1811–22. doi: 10.1056/NEJMoa1805762

19. Dimopoulos M, Quach H, Mateos MV, Landgren O, Leleu X, Siegel D, et al. Carfilzomib, Dexamethasone, and Daratumumab Versus Carfilzomib and Dexamethasone for Patients With Relapsed or Refractory Multiple Myeloma (CANDOR): Results From a Randomised, Multicentre, Open-Label, Phase 3 Study. *Lancet* (2020) 396(10245):186–97. doi: 10.1016/S0140-6736(20)30734-0
20. Attal M, Richardson PG, Rajkumar SV, San-Miguel J, Beksac M, Spicka I, et al. Isatuximab Plus Pomalidomide and Low-Dose Dexamethasone Versus Pomalidomide and Low-Dose Dexamethasone in Patients With Relapsed and Refractory Multiple Myeloma (ICARIA-MM): A Randomised, Multicentre, Open-Label, Phase 3 Study. *Lancet* (2019) 394(10214):2096–107. doi: 10.1097/01.HS9.0000561576.58696.ae
21. Kumar SK, Lee JH, Lahuerta JJ, Morgan G, Richardson PG, Crowley J, et al. Risk of Progression and Survival in Multiple Myeloma Relapsing After Therapy With IMiDs and Bortezomib: A Multicenter International Myeloma Working Group Study. *Leukaemia* (2012) 26(1):149–57. doi: 10.1038/leu.2011.196
22. Kumar SK, Dimopoulos MA, Kastritis E, Terpos E, Nahi H, Goldschmidt H, et al. Natural History of Relapsed Myeloma, Refractory to Immunomodulatory Drugs and Proteasome Inhibitors: A Multicenter IMWG Study. *Leukaemia* (2017) 31(11):2443–8. doi: 10.1038/leu.2017.138
23. Usmani S, Ahmadi T, Ng Y, Lam A, Desai A, Potluri R, et al. Analysis of Real-World Data on Overall Survival in Multiple Myeloma Patients With >3 Prior Lines of Therapy Including a Proteasome Inhibitor (PI) and an Immunomodulatory Drug (IMiD), or Double Refractory to a PI and an IMiD. *Oncologist* (2016) 21(11):1355–61. doi: 10.1634/theoncologist.2016-0104
24. Richardson PG, San Miguel JF, Moreau P, Hajek R, Dimopoulos MA, Laubach JP, et al. Interpreting Clinical Trial Data in Multiple Myeloma: Translating Findings to the Real-World Setting. *Blood Cancer J* (2018) 8(11):109. doi: 10.1038/s41408-018-0141-0
25. Jagannath S, Roy A, Kish J, Lunacek O, Globe D, Eaddy M, et al. Real-World Treatment Patterns and Associated Progression-Free Survival in Relapsed/Refractory Multiple Myeloma Among US Community Oncology Practices. *Expert Rev Hematol* (2016) 9(7):707–17. doi: 10.1080/17474086.2016.1195254
26. Shah JJ, Abonour R, Gasparetto C, Hardin JW, Toomey K, Narang M, et al. Analysis of Common Eligibility Criteria of Randomized Controlled Trials in Newly Diagnosed Multiple Myeloma Patients and Extrapolating Outcomes. *Clin Lymphoma Myeloma Leuk* (2017) 17(9):575–83. doi: 10.1016/j.clml.2017.06.013
27. Collins R, Bowman L, Landray M, Peto R. The Magic of Randomization Versus the Myth of Real-World Evidence. *N Engl J Med* (2020) 382(7):674–8. doi: 10.1056/NEJMs1901642
28. Kumar S, Paiva B, Anderson KC, Durie B, Landgren O, Moreau P, et al. International Myeloma Working Group Consensus Criteria for Response and Minimal Residual Disease Assessment in Multiple Myeloma. *Lancet Oncol* (2016) 17(8):e328–46. doi: 10.1016/S1470-2045(16)30206-6
29. Yu B, Jiang T, Liu D. BCMA-Targeted Immunotherapy for Multiple Myeloma. *J Hematol Oncol* (2020) 13:125. doi: 10.1186/s13045-020-00962-7

**Conflict of Interest:** The authors declare that the research was conducted in the absence of any commercial or financial relationships that could be construed as a potential conflict of interest.

Copyright © 2021 Lecat, Taube, Wilson, Carmichael, Parrish, Wallis, Kyriakou, Lee, Mahmood, Papanikolaou, Rabin, Sive, Wechalekar, Yong, Cook and Popat. This is an open-access article distributed under the terms of the Creative Commons Attribution License (CC BY). The use, distribution or reproduction in other forums is permitted, provided the original author(s) and the copyright owner(s) are credited and that the original publication in this journal is cited, in accordance with accepted academic practice. No use, distribution or reproduction is permitted which does not comply with these terms.