



Since January 2020 Elsevier has created a COVID-19 resource centre with free information in English and Mandarin on the novel coronavirus COVID-19. The COVID-19 resource centre is hosted on Elsevier Connect, the company's public news and information website.

Elsevier hereby grants permission to make all its COVID-19-related research that is available on the COVID-19 resource centre - including this research content - immediately available in PubMed Central and other publicly funded repositories, such as the WHO COVID database with rights for unrestricted research re-use and analyses in any form or by any means with acknowledgement of the original source. These permissions are granted for free by Elsevier for as long as the COVID-19 resource centre remains active.

A standardized definition of placental infection by SARS-CoV-2, a consensus statement from the National Institutes of Health/*Eunice Kennedy Shriver* National Institute of Child Health and Human Development SARS-CoV-2 Placental Infection Workshop



Drucilla J. Roberts, MD; Andrea G. Edlow, MD; Roberto Romero, MD; Carolyn B. Coyne, PhD; David T. Ting, MD; Jason L. Hornick, MD, PhD; Sherif R. Zaki, MD, PhD; Upasana Das Adhikari, PhD; Lena Serghides, PhD; Stephanie L. Gaw, MD, PhD; Torri D. Metz, MD, MS; On behalf of all members of the National Institutes of Health/*Eunice Kennedy Shriver* National Institute of Child Health and Human Development SARS-CoV-2 Placental Infection Workshop

Pregnant individuals infected with SARS-CoV-2 have higher rates of intensive care unit admission, oxygen requirement, need for mechanical ventilation, and death than nonpregnant individuals. Increased COVID-19 disease severity may be associated with an increased risk of viremia and placental infection. Maternal SARS-CoV-2 infection is also associated with pregnancy complications such as preeclampsia and preterm birth, which can be either placentally mediated or reflected in the placenta. Maternal viremia followed by placental infection may lead to maternal-fetal transmission (vertical), which affects 1% to 3% of exposed newborns. However, there is no agreed-upon or standard definition of placental infection. The National Institutes of Health/*Eunice Kennedy Shriver* National Institute of Child Health and Human Development convened a group of experts to propose a working definition of placental infection to inform ongoing studies of SARS-CoV-2 during pregnancy. Experts recommended that placental infection be defined using techniques that allow virus detection and localization in placental tissue by one or more of the following methods: in situ hybridization with antisense probe (detects replication) or a sense probe (detects viral messenger RNA) or immunohistochemistry to detect viral nucleocapsid or spike proteins. If the abovementioned methods are not possible, reverse transcription polymerase chain reaction detection or quantification of viral RNA in placental homogenates, or electron microscopy are alternative approaches. A graded classification for the likelihood of placental infection as definitive, probable, possible, and unlikely was proposed. Manuscripts reporting placental infection should describe the sampling method (location and number of samples collected), method of preservation of tissue, and detection technique. Recommendations were made for the handling of the placenta, examination, and sampling and the use of validated reagents and sample protocols (included as appendices).

Key words: COVID-19, fetal death, immunohistochemistry, in situ hybridization, placental infection, placentitis, preeclampsia, preterm birth, SARS-CoV-2, stillbirth, syncytiotrophoblast, vertical transmission

Introduction

Pregnant individuals infected with SARS-CoV-2 have higher rates of admission to the intensive care unit, requirement for mechanical ventilation, extracorporeal membrane oxygenation, and death than nonpregnant individuals^{1–3} but the risk of placental, fetal, and pregnancy complications have been less well described. Studies show that maternal SARS-CoV-2 infection is associated with an increased risk of preterm birth and preeclampsia,^{4–6} both of which may be placentally mediated or placentally-reflected complications. Moreover, published reports^{7–9} show that first- and second-trimester infections with SARS-CoV-2 are possible and can result in

pregnancy loss. Recent reports from Ireland found second-trimester miscarriage and stillbirth associated with presumed placental SARS-CoV-2 infection, placentitis, and specifically the B.1.1.7 variant.^{10,11} These reports suggest that placental infection does carry substantial perinatal morbidity and that clinical surveillance of exposed pregnancies and placental evaluation for infection are warranted. In addition, placental infection does not equate with vertical transmission but may cause placental damage, which leads to perinatal morbidity without infection. Many have noted the triad of histiocytic intervillitis, increased perivillous fibrin deposition, and trophoblast necrosis

associated with placental infection.^{10,12–19} Although these histologic findings are not specific for infection, they are characteristic enough to indicate a study to evaluate whether the placenta was infected.

Although early reports were focused on SARS-CoV-2 placental infection and in utero transmission,^{19–26} larger studies and meta-analyses indicate that placental infection and vertical transmission were rare,^{4,9,27–32} particularly in comparison with other maternal viral infections in pregnancy (such as cytomegalovirus, Zika, rubella, and untreated HIV^{33–36}). Diagnostic criteria for confirming placental infection have been inconsistent. Early reports conflated placental

infection with vertical transmission²², highlighting the need for consensus definitions and nomenclature in this regard. One report found SARS-CoV-2 infection in 100% of placentas from mothers with COVID-19 based on positive immunohistochemistry studies,³⁷ whereas others have rarely reported placental infection, if at all.^{17,29,38,39} Investigators have employed a variety of techniques to diagnose placental infection, including reverse transcription polymerase chain reaction (RT-PCR) on placental homogenates,^{9,40,41} immunohistochemistry,^{9,19,37} RNA in situ hybridization (RNA-ISH),^{9,21,29,39} and electron microscopy,^{21,42–44} making it difficult to compare across studies and establish definitive evidence regarding placental infection risks. The relative sensitivity and specificity of these techniques in the placenta have not been rigorously studied, but we have included what is known in the appendices. Given the patchy

nature of infection of the placenta by SARS-CoV-2,⁴⁵ legitimate concerns are raised about false positive and false negative results by various detection methods. Misclassification might lead to erroneous diagnoses with potential clinical and research implications. Indeed, knowing the true prevalence of placental infection depends on accurate diagnoses, and thus, these techniques are critically important to perform with validation and proper controls. Despite these caveats, a systematic review and meta-analysis of these disparate case reports and case series reported a placental infection rate of 7% (2 of 26 cases).⁴⁶ Vertical transmission rates of 1.1% to 3% have been noted in cross-sectional studies ranging in size from 101 to 2399 mothers.^{4,27,30,32,47} There is clearly a need for standardization of methods to ensure robust and reproducible results and to facilitate cross-study comparisons.

Although a definition of transplacental infection has been proposed (World Health Organization reference number: WHO/2019-nCoV/mother-to-child transmission/2021.1⁴⁸), the criteria for placental infection have not. Although not all viruses infect the placenta before infecting the fetus,^{49,50} placental infection seems to be a necessary intermediate step for in utero transmission of SARS-CoV-2 to the fetus.¹⁵ Objective, robust, consensus-driven criteria for the documentation of placental infection are needed to provide guidelines for research and clinical care. Herein, we present consensus definitions, tiered by rigor, formulated by a team of experts on the *Eunice Kennedy Shriver* National Institute of Child Health and Human Development (NICHD)—assembled task force, for what constitutes placental infection by SARS-CoV-2 for clinical and research applications. We include, in

From the Department of Pathology, Massachusetts General Hospital, Boston, MA (Dr Roberts); Division of Maternal-Fetal Medicine, Department of Obstetrics and Gynecology, Massachusetts General Hospital, Boston, MA (Dr Edlow); Perinatology Research Branch, Division of Obstetrics and Maternal-Fetal Medicine, Division of Intramural Research, *Eunice Kennedy Shriver* National Institute of Child Health and Human Development, National Institutes of Health, United States Department of Health and Human Services, Bethesda, MD (Dr Romero); Center for Molecular Medicine and Genetics, Wayne State University School of Medicine, Detroit, MI (Dr Romero); Department of Molecular Genetics and Microbiology, Duke University School of Medicine, Durham, NC (Dr Coyne); Duke Human Vaccine Institute, Duke University School of Medicine, Durham, NC (Dr Coyne); Department of Medicine and Cancer Center, Massachusetts General Hospital, Boston, MA (Dr Ting); Department of Pathology, Brigham and Women's Hospital, Harvard Medical School, Boston, MA (Dr Hornick); Infectious Diseases Pathology Branch, Division of High-Consequence Pathogens and Pathology, National Center for Emerging and Zoonotic Infectious Diseases, Centers for Disease Control and Prevention, Atlanta, GA (Dr Zaki); Ragon Institute of MGH, MIT and Harvard, Cambridge, MA (Dr Adhikari); Toronto General Hospital Research Institute, University Health Network, Toronto, Ontario, Canada (Dr Serghides); Division of Maternal-Fetal Medicine, Department of Obstetrics, Gynecology, and Reproductive Sciences, University of California, San Francisco, San Francisco, CA (Dr Gaw); and University of Utah Health, Salt Lake City, UT (Dr Metz).

Received June 18, 2021; revised July 25, 2021; accepted July 26, 2021.

D.J.R., A.G.E., and R.J.R. share first authorship.

Meeting date: March 9, 2021.

D.J.R. received royalties for authorship on perinatal pathology topics for UpToDate and Cambridge University Press, neither of which should impact this manuscript. J.L.H. is a consultant for Aadi Bioscience and TRACON Pharmaceuticals, unrelated to the topic of this manuscript. D.T.T. is a consultant for ROME Therapeutics, NanoString Technologies, Pfizer, Merrimack Pharmaceuticals, Ventana Roche, Foundation Medicine, Inc, and EMD Millipore Sigma, which are not related to this work. D.T.T. is a founder and has equity in ROME Therapeutics, PanTher Therapeutics, and TellBio, Inc, which is not related to this work. D.T.T. receives sponsored research support from ACD Bio-Techne for RNA in situ hybridization, which is related to this manuscript. D.T.T.'s interests were reviewed and are managed by Mass General Brigham in accordance with their conflict of interest policies. T.D.M. is a site principal investigator (PI) and medical consultant for a Pfizer trial of SARS-CoV-2 vaccination in pregnancy. T.D.M. receives UpToDate royalties and was the site PI for a Novavax and GestVision trial, which are unrelated to this work. The remaining authors report no conflict of interest.

This research was supported, in part, by the Perinatology Research Branch, Division of Obstetrics and Maternal-Fetal Medicine, Division of Intramural Research, *Eunice Kennedy Shriver* National Institute of Child Health and Human Development, National Institutes of Health, United States Department of Health and Human Services (NICHD/NIH/DHHS), and, in part, with federal funds from NICHD/NIH/DHHS under contract number HHSN27520130006C. R.J.R. has contributed to this work as part of his official duties as an employee of the United States Federal Government.

The findings and conclusions in this report are those of the authors and do not necessarily represent the official position of the Centers for Disease Control and Prevention.

Corresponding authors: Drucilla J. Roberts, MD, djroberts@mgh.harvard.edu; Andrea G. Edlow, MD, aedlow@mhg.harvard.edu; Roberto Romero, MD, prbchiefstaff@med.wayne.edu

0002-9378/\$36.00 • © 2021 Elsevier Inc. All rights reserved. • <https://doi.org/10.1016/j.ajog.2021.07.029>



Click Video under article title in Contents at ajog.org

appendices, protocols for implementation with specifics and references.

Methods

A group of active investigators with expertise in placental pathology, virology, obstetrics, infectious diseases, immunology, and molecular biology convened virtually to discuss and critique methods used to diagnose placental infection with SARS-CoV-2. In this multidisciplinary virtual workshop, experts in each field presented the following methods for documenting placental infection by SARS-CoV-2 (highlighting the strengths and limitations of each method): RNA RT-PCR or quantitative RT-PCR from placental homogenates, immunohistochemistry, RNA-ISH, electron microscopy, and histopathology. A round-table discussion followed the presentations and dialogue continued over several days. A 3-person team (D.J.R., A.G.E., R.J.R.) then devised a ranked template of specific diagnostic techniques and procedures in

TABLE 1

Definition categories of placental infection with SARS-CoV-2

Definite: evidence of active replicating virus with location in the placental tissues

Probable: evidence of viral RNA or protein located in placental tissues

Possible: evidence of viral RNA in placental homogenates or viral-like particles by electron microscopy in placental tissues

Unlikely: no evidence of any of the above

No testing: testing not done

Roberts et al. Consensus definition of SARS-CoV-2 placental infection. Am J Obstet Gynecol 2021.

descending order of rigor ([Table 1](#)). This was then distributed to the larger committee for further discussion until consensus was achieved on the recommendations that follow.

Recommendations for Definition of Placental Infection

Recognizing that there may be a difference between what represents the most stringent criteria for defining placental infection and what can be done in the

greatest number of real-world settings, we seek to offer guidance on definitions of placental SARS-CoV-2 infection in clinical settings and in biomedical investigation.

As such, we offer 5 levels of rigor for detecting placental infection with SARS-CoV-2 (both acute and current or persistent) ([Table 1](#)), followed by a pragmatic approach for defining placental infection. For each individual investigation, we suggest choosing 1

TABLE 2

Definition specifics of placental infection with SARS-CoV-2 in order of rigor

Definite: documentation of viral presence, location in the placenta tissues, and replication, by:

- 1) RNA probe to the antisense strand, showing a positive signal in placental tissues with appropriate positive and negative controls (validated reagents and sample protocols are detailed in [Appendix A](#))

or

- 2) Positive staining by RNA-ISH for double-stranded RNA, produced as replication intermediate for positive-sense RNA virus in placental tissues with appropriate positive and negative controls (validated reagents and sample protocols are detailed in [Appendix A](#))

Probable: documentation of viral proteins or RNA within placental tissues, without evidence of active replication via:

- 1) RNA probe to the positive-sense strand, showing a positive signal in placental tissues with appropriate positive and negative controls ([Figure 3](#)).

or

- 2) Positive staining by immunohistochemistry in placental tissues with antibodies directed to viral proteins, with appropriate positive and negative controls (validated reagents and sample protocols are detailed in [Appendix B](#)) ([Figure 4](#)).

Possible: less specific detection of virus. These approaches could be detecting viral particles engulfed by macrophages rather than actively replicating virus. RT-PCR of placental homogenates theoretically may have a positive result owing to maternal viremia (although this is a rare entity), rather than placental involvement.

- 1) RT-PCR detection or quantification of viral RNA in PBS-rinsed placental homogenates, no tissue localization (validated reagents and sample protocols are summarized in [Appendix C](#)).

Note that an alternative approach is a 2-step approach, in which RT-PCR is used as a screen and then followed up with one of the methods recommended to confirm “definite” or “probable” infection. This hybrid/2-step approach would be more rigorous than RT-PCR alone and potentially more sensitive than the “definite” and “probable” approaches.

- 2) Electron microscopic detection of viral-like particles in placental tissues.

Unlikely: Negative results from any of the above tests

No testing: placenta not tested

PBS, phosphate-buffered saline; RNA-ISH, RNA in situ hybridization; RT-PCR, reverse transcription polymerase chain reaction.

Roberts et al. Consensus definition of SARS-CoV-2 placental infection. Am J Obstet Gynecol 2021.

TABLE 3**Recommended reporting guidelines for scientific manuscripts**

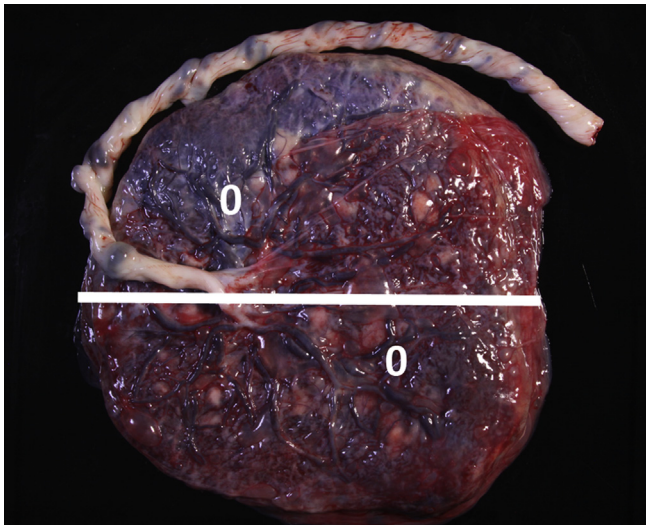
Scientific manuscripts that report on placental detection of SARS-CoV-2 should report on:

- (1) Sampling method (including location and number of sites sampled)
- (2) Time from delivery to sample preservation
- (3) Method of sample preservation
- (4) Method of detection used (and in the discussion reflect strengths and limitations of that method)

Other issues of importance to report:

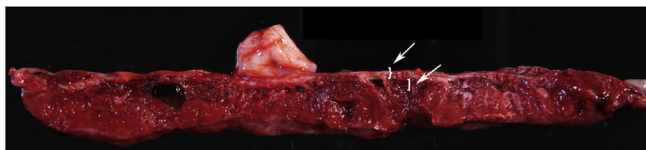
- (1) The timing of the maternal infection in relationship to the delivery
- (2) Maternal disease severity, recommend using the National Institutes of Health⁵¹ criteria
- (3) The strain of virus, if known

Roberts et al. Consensus definition of SARS-CoV-2 placental infection. *Am J Obstet Gynecol* 2021.

FIGURE 1**Gross photograph of the chorionic plate (fetal side) of a normal (uninfected) placenta**

The white line is cut site for Figure 2 slab section. The white zeroes are possible biopsy sites.

Roberts et al. Consensus definition of SARS-CoV-2 placental infection. *Am J Obstet Gynecol* 2021.

FIGURE 2**Gross photograph of the full-thickness slab section through the white line in Figure 1**

The white brace highlights chorionic plate—fetal membranes should be excluded from the biopsy. The white bracket indicates fetal parenchyma as target for sampling; approximately 0.5 cm depth is recommended. The white arrows highlight the brace and the bracket.

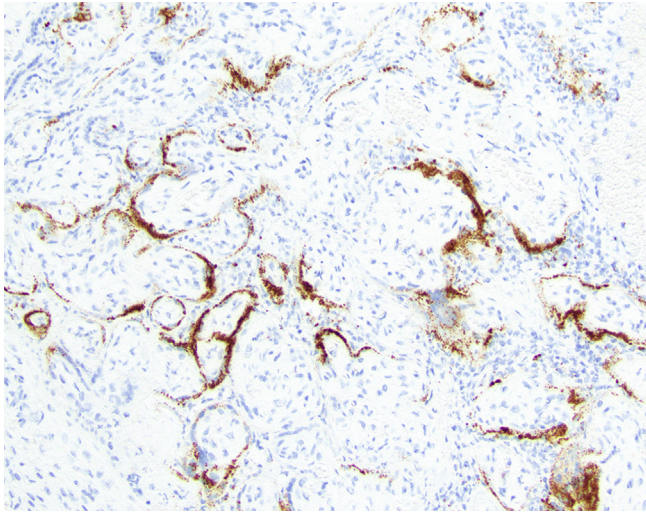
Roberts et al. Consensus definition of SARS-CoV-2 placental infection. *Am J Obstet Gynecol* 2021.

(or more) of the 5 categories based on the level of rigor desired by the investigator or clinician and what tools are available for implementation. Our recommended diagnostic criteria are provided in Table 2. In addition, we provide instruction for handling, processing, and examination of the placenta (with additional sample collection, handling, and storage information in NICHD, National Institutes of Health, and United States Department of Health and Human Services (2021). “Promoting Data Harmonization to Accelerate COVID-19 Pregnancy Research,” Biospecimens Common Data Elements section. Retrieved from: https://www.niehs.nih.gov/research/programs/disaster/database/nihpromotin_dataharmonizationacceleratecovid19pregnancyresearchbiomedicalpsychosocialbiospecimens_vf.pdf.) The recommendations for reporting in scientific manuscripts are presented in Table 3.

Recommended placental handling, processing, and examination

For RT-PCR testing, we recommend at least 2 fresh placental samples (0.5 cm³) taken within 20 minutes of placental delivery (and not >1 hour after placental delivery to avoid RNA degradation), best obtained in the delivery room by appropriately protected and trained individuals, from the fetal side of the placenta (Figures 1 and 2) rinsed in sterile normal saline or phosphate-buffered saline, and then either snap-frozen (in liquid nitrogen or on dry ice until placed in −80°C) or placed in 5 to 10 volumes of RNeasy Lysis Buffer (Qiagen, Crawfordsville, IN) for subsequent freezing and storage at −80°C. Biopsies should be taken from a midpoint between the chorionic and basal plates and midway between the cord insertion and the placental edge (at least 3 cm from the cord insertion and 3 cm from the placental edge) to ensure viable villous parenchyma is collected (Figures 1 and 2). The fetal membranes should be dissected off the fetal surface and not included in the biopsy. Notably, 2 samples are recommended for protection against failure of RNA extraction and for biological sampling diversity of different placental

FIGURE 3
RNA-ISH positive signal in syncytial and cytotrophoblast (10× original)



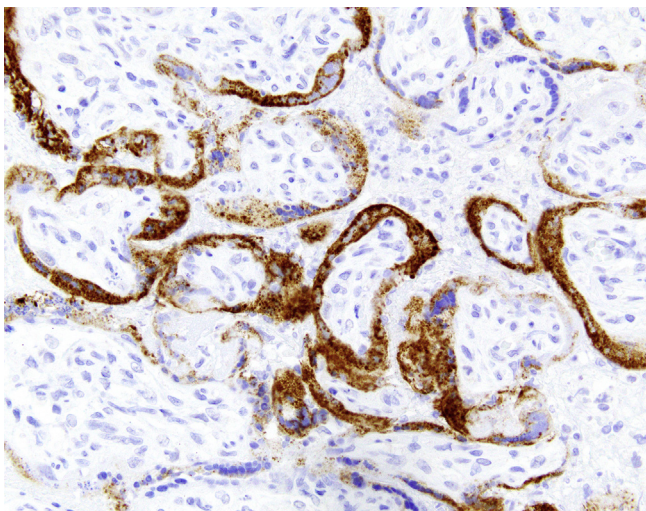
RNA-ISH, RNA in situ hybridization.

Roberts et al. Consensus definition of SARS-CoV-2 placental infection. *Am J Obstet Gynecol* 2021.

regions, given that patchy infection is possible.⁴⁵ Snap-frozen biopsies may permit single-cell RNA-Seq/nuc-Seq approaches, other RNA analyses, and protein analyses, whereas biopsies preserved in RNAlater can be used for RNA/DNA analyses and protein analyses, but not for

scRNA-Seq/nuc-Seq. RNA quality is likely better for longer periods of time with the use of RNAlater. For RNA-ISH and immunohistochemistry studies, formalin-fixed paraffin-embedded full-thickness placental parenchyma cut at 5 μ m onto glass slides should be used. All

FIGURE 4
Antispikes protein IHC with signal in syncytial and cytotrophoblast (20× original)



IHC, immunohistochemistry.

Roberts et al. Consensus definition of SARS-CoV-2 placental infection. *Am J Obstet Gynecol* 2021.

studied placentas should be examined and reported promptly by pathology following the Amsterdam Criteria for sampling and histologic diagnoses.⁵²

Conclusion

We submit this set of recommendations to standardize the definition of SARS-CoV-2 infection of the placenta. These recommendations are made by a consensus panel of experts in the fields of obstetrics, virology, placental pathology, infectious disease, immunology, and molecular biology. The definitions are tiered by rigor of the diagnostic technique. Investigators and clinical care providers are encouraged to use the most rigorous method available for documenting placental infection in studies and in clinical diagnosis. Comparisons across studies are more valuable when the studies use the same standardized methods. We understand that not all, or perhaps not any, of these methods will be available at all institutions, but we predict that most institutions will have at least one recommended method at their disposal, and collaboration or consultation is advised for those that do not have any recommended method available. We anticipate that utilization of these recommended definitions of placental infection by SARS-COV-2 will facilitate comparisons of results among studies and that improved interpretation will follow, allowing for maximum impact of research in this area and optimization of patient care. ■

ACKNOWLEDGMENTS

The authors thank the task force at the NICHD and Dr Diana Bianchi for the foresight to organize this workshop. We are indebted to Drs Nahida Chakhtoura, Jessica Gleason, and Caroline Signore who contributed greatly to the organization and this workshop.

Participants: the authors and Andrew Bremer, MD, PhD; Samantha Calabrese, MPH; Nahida Chakhtoura, MD; Gaya Dowling, PhD; Susan Fisher, PhD; Michelle Freund, PhD; Jessica Gleason, PhD; Katherine Grantz, MD; Corinne Hausmann, PhD; Rohan Hazra, MD; John Ileki, PhD; George Miller, PhD; David Pepin, PhD; Richard K. Miller, PhD; Yoel Sadvovsky, MD; Caroline Signore, MD, MPH; Fasil Tekola-Ayele, PhD; and David Weinberg, PhD.

GLOSSARY

- Immunohistochemistry (IHC): antibody-mediated localization of proteins in the tissue.
- Negative-sense strand: provides evidence of viral replication in a positive-sense RNA virus (eg, SARS-CoV-2).
- N-protein: the nucleocapsid RNA binding protein of the SARS-CoV-2 virus.
- RNA in situ hybridization (RNA-ISH): molecular localization of the RNA transcript in the tissue.
- RT-PCR: reverse transcription polymerase chain reaction for amplification of RNA.
- Positive-sense strand: provides evidence of viral presence but not necessarily viral replication in a positive-sense RNA virus as in SARS-CoV-2.
- RT-qPCR: quantitative reverse transcription polymerase chain reaction for amplification of RNA.
- S-protein: the spike surface glycoprotein of the SARS-CoV-2 virus.
- Viral replication: active/infectious viral reproduction.

REFERENCES

- Zambrano LD, Ellington S, Strid P, et al. Update: characteristics of symptomatic women of reproductive age with laboratory-confirmed SARS-CoV-2 infection by pregnancy status - United States, January 22-October 3, 2020. *MMWR Morb Mortal Wkly Rep* 2020;69:1641-7.
- Ellington S, Strid P, Tong VT, et al. Characteristics of women of reproductive age with laboratory-confirmed SARS-CoV-2 infection by pregnancy status - United States, January 22-June 7, 2020. *MMWR Morb Mortal Wkly Rep* 2020;69:769-75.
- Delahoy MJ, Whitaker M, O'Halloran A, et al. Characteristics and maternal and birth outcomes of hospitalized pregnant women with laboratory-confirmed COVID-19 - COVID-NET, 13 states, March 1-August 22, 2020. *MMWR Morb Mortal Wkly Rep* 2020;69:1347-54.
- Woodworth KR, Olsen EO, Neelam V, et al. Birth and infant outcomes following laboratory-confirmed SARS-CoV-2 infection in pregnancy—SET-NET, 16 jurisdictions, March 29-October 14, 2020. *MMWR Morb Mortal Wkly Rep* 2020;69:1635-40.
- Villar J, Ariff S, Gunier RB, et al. Maternal and neonatal morbidity and mortality among pregnant women with and without COVID-19 infection: the INTERCOVID multinational cohort study. *JAMA Pediatr* 2021;175:817-26.
- Roseboom JL, Raghuraman N, Carter EB, Kelly JC. Coronavirus disease 2019 and hypertensive disorders of pregnancy. *Am J Obstet Gynecol* 2021;224:623-4.
- Cosma S, Carosso AR, Cusato J, et al. Coronavirus disease 2019 and first-trimester spontaneous abortion: a case-control study of 225 pregnant patients. *Am J Obstet Gynecol* 2021;224:391.e1-7.
- Shende P, Gaikwad P, Gandhewar M, et al. Persistence of SARS-CoV-2 in the first trimester placenta leading to transplacental transmission and fetal demise from an asymptomatic mother. *Hum Reprod* 2021;36:899-906.
- Colson A, Depoix CL, Dessilly G, et al. Coronavirus disease 2019 during pregnancy: clinical and in vitro evidence against placenta infection at term by severe acute respiratory syndrome coronavirus 2. *Am J Pathol* 2021 [Epub ahead of print].
- Linehan L, O'Donoghue K, Dineen S, White J, Higgins JR, Fitzgerald B. SARS-CoV-2 placentitis: an uncommon complication of maternal COVID-19. *Placenta* 2021;104:261-6.
- Royal College of Physicians of Ireland. FoPatloOaG. Covid placentitis: statement from the RCPI Faculty of Pathology and the Institute of Obstetricians and Gynaecologists Online; 2021.
- Schwartz DA, Dhaliwal A. Coronavirus diseases in pregnant women, the placenta, fetus, and neonate. *Adv Exp Med Biol* 2021;1318:223-41.
- Schwartz DA, Baldewijns M, Benachi A, et al. Chronic histiocytic intervillitis with trophoblast necrosis is a risk factor associated with placental infection from coronavirus disease 2019 (COVID-19) and intrauterine maternal-fetal severe acute respiratory syndrome coronavirus 2 (SARS-CoV-2) transmission in live-born and stillborn infants. *Arch Pathol Lab Med* 2021;145:517-28.
- Argueta LB, Lacko LA, Bram Y, et al. SARS-CoV-2 infects syncytiotrophoblast and activates inflammatory responses in the placenta. *bioRxiv*. Preprint posted online June 17, 2021. <https://doi.org/10.1101/2021.06.01.446676>
- Schwartz DA, Morotti D. Placental pathology of COVID-19 with and without fetal and neonatal infection: trophoblast necrosis and chronic histiocytic intervillitis as risk factors for transplacental transmission of SARS-CoV-2. *Viruses* 2020;12:1308.
- Pulinx B, Kieffer D, Michiels I, et al. Vertical transmission of SARS-CoV-2 infection and preterm birth. *Eur J Clin Microbiol Infect Dis* 2020;39:2441-5.
- Debelenko L, Katsyv I, Chong AM, Peruyero L, Szabolcs M, Uhlemann AC. Trophoblast damage with acute and chronic intervillitis: disruption of the placental barrier by severe acute respiratory syndrome coronavirus 2. *Hum Pathol* 2021;109:69-79.
- Mongula JE, Frenken MWE, van Lijnschoten G, et al. COVID-19 during pregnancy: non-reassuring fetal heart rate, placental pathology and coagulopathy. *Ultrasound Obstet Gynecol* 2020;56:773-6.
- Vivanti AJ, Vauloup-Fellous C, Prevot S, et al. Transplacental transmission of SARS-CoV-2 infection. *Nat Commun* 2020;11:3572.
- Dong L, Tian J, He S, et al. Possible vertical transmission of SARS-CoV-2 from an infected mother to her newborn. *JAMA* 2020;323:1846-8.
- Hosier H, Farhadian SF, Morotti RA, et al. SARS-CoV-2 infection of the placenta. *J Clin Invest* 2020;130:4947-53.
- Patanè L, Morotti D, Giunta MR, et al. Vertical transmission of coronavirus disease 2019: severe acute respiratory syndrome coronavirus 2 RNA on the fetal side of the placenta in pregnancies with coronavirus disease 2019-positive mothers and neonates at birth. *Am J Obstet Gynecol MFM* 2020;2:100145.
- Penfield CA, Lighter J, Roman AS. Intrauterine vertical transmissibility of SARS-CoV-2: the evidence is evolving. *Am J Obstet Gynecol MFM* 2020;2:100227.
- Lamouroux A, Attie-Bitach T, Martinovic J, Leruez-Ville M, Ville Y. Evidence for and against vertical transmission for severe acute respiratory syndrome coronavirus 2. *Am J Obstet Gynecol* 2020;223:91.e1-4.
- Alzamora MC, Paredes T, Caceres D, Webb CM, Valdez LM, La Rosa M. Severe COVID-19 during pregnancy and possible vertical transmission. *Am J Perinatol* 2020;37:861-5.
- Zeng H, Xu C, Fan J, et al. Antibodies in infants born to mothers with COVID-19 pneumonia. *JAMA* 2020;323:1848-9.
- Adhikari EH, Moreno W, Zofkie AC, et al. Pregnancy outcomes among women with and without severe acute respiratory syndrome coronavirus 2 infection. *JAMA Netw Open* 2020;3:e2029256.
- Dumitriu D, Emeruwa UN, Hanft E, et al. Outcomes of neonates born to mothers with severe acute respiratory syndrome coronavirus 2 infection at a large medical center in New York City. *JAMA Pediatr* 2021;175:157-67.

29. Edlow AG, Li JZ, Collier AY, et al. Assessment of maternal and neonatal SARS-CoV-2 viral load, transplacental antibody transfer, and placental pathology in pregnancies during the COVID-19 pandemic. *JAMA Netw Open* 2020;3:e2030455.
30. Flaherman VJ, Afshar Y, Boscardin J, et al. Infant outcomes following maternal infection with SARS-CoV-2: first report from the PRIORITY study. *Clin Infect Dis* 2020 [Epub ahead of print].
31. Kotlyar AM, Tal O, Tal R. Vertical transmission of coronavirus disease 2019, a response. *Am J Obstet Gynecol* 2021;224:329–30.
32. Mullins E, Hudak ML, Banerjee J, et al. Pregnancy and neonatal outcomes of COVID-19: coreporting of common outcomes from PAN-COVID and AAP-SONPM registries. *Ultrasound Obstet Gynecol* 2021;57:573–81.
33. Kenneson A, Cannon MJ. Review and meta-analysis of the epidemiology of congenital cytomegalovirus (CMV) infection. *Rev Med Virol* 2007;17:253–76.
34. Honein MA, Dawson AL, Petersen EE, et al. Birth defects among fetuses and infants of US women with evidence of possible Zika virus infection during pregnancy. *JAMA* 2017;317:59–68.
35. Dontigny L, Arsenault MY, Martel MJ. Clinical Practice Obstetrics Committee. Rubella in pregnancy. *J Obstet Gynaecol Can* 2008;30:152–8.
36. Connor EM, Sperling RS, Gelber R, et al. Reduction of maternal-infant transmission of human immunodeficiency virus type 1 with zidovudine treatment. Pediatric AIDS Clinical Trials Group Protocol 076 Study Group. *N Engl J Med* 1994;331:1173–80.
37. Taglauer E, Benarroch Y, Rop K, et al. Consistent localization of SARS-CoV-2 spike glycoprotein and ACE2 over TMPRSS2 predominance in placental villi of 15 COVID-19 positive maternal-fetal dyads. *Placenta* 2020;100:69–74.
38. Tolu LB, Ezeh A, Feyissa GT. Vertical transmission of severe acute respiratory syndrome coronavirus 2: a scoping review. *PLoS One* 2021;16:e0250196.
39. Hecht JL, Quade B, Deshpande V, et al. SARS-CoV-2 can infect the placenta and is not associated with specific placental histopathology: a series of 19 placentas from COVID-19-positive mothers. *Mod Pathol* 2020;33:2092–103.
40. Stonoga ETS, de Almeida Lanzoni L, Rebutini PZ, et al. Intrauterine transmission of SARS-CoV-2. *Emerg Infect Dis* 2021;27:638–41.
41. Valk JE, Chong AM, Uhlemann AC, Debelenko L. Detection of SARS-CoV-2 in placental but not fetal tissues in the second trimester. *J Perinatol* 2021;41:1184–6.
42. Algarroba GN, Rekawek P, Vahanian SA, et al. Visualization of severe acute respiratory syndrome coronavirus 2 invading the human placenta using electron microscopy. *Am J Obstet Gynecol* 2020;223:275–8.
43. Goldsmith CS, Miller SE, Martines RB, Bullock HA, Zaki SR. Electron microscopy of SARS-CoV-2: a challenging task. *Lancet* 2020;395:e99.
44. Algarroba GN, Rekawek P, Vahanian SA, et al. Alternative interpretation to the findings reported in visualization of severe acute respiratory syndrome coronavirus 2 invading the human placenta using electron microscopy. *Am J Obstet Gynecol* 2020;223:786–8.
45. Hanna N, Lin X, Thomas K, et al. Underestimation of SARS-CoV-2 infections in placental samples. *Am J Obstet Gynecol* 2021 [Epub ahead of print].
46. Kotlyar AM, Grechukhina O, Chen A, et al. Vertical transmission of coronavirus disease 2019: a systematic review and meta-analysis. *Am J Obstet Gynecol* 2021;224:35–53.e3.
47. Dumitriu D, Gyamfi-Bannerman C. Understanding risk for newborns born to SARS-CoV-2-positive mothers. *JAMA* 2021;325:2051–2.
48. SEXUAL AND REPRODUCTIVE HEALTH AND RESEARCH WH. Definition and categorization of the timing of mother-to-child transmission of SARS-CoV-2/COVID-19. *Scientific briefs*. Newsletter 2021.
49. Pereira L. Congenital viral infection: traversing the uterine-placental interface. *Annu Rev Virol* 2018;5:273–99.
50. Bhat P, Anderson DA. Hepatitis B virus translocates across a trophoblastic barrier. *J Virol* 2007;81:7200–7.
51. National Institutes of Health. COVID-19 treatment guidelines. Clinical Spectrum of SARS-CoV-2 Infection. 2021. Available at: <https://www.covid19treatmentguidelines.nih.gov/overview/clinical-spectrum/>. Accessed July 15, 2021.
52. Khong TY, Mooney EE, Ariel I, et al. Sampling and definitions of placental lesions: Amsterdam placental workshop group consensus statement. *Arch Pathol Lab Med* 2016;140:698–713.
53. Desai N, Neyaz A, Szabolcs A, et al. Temporal and spatial heterogeneity of host response to SARS-CoV-2 pulmonary infection. *Nat Commun* 2020;11:6319.
54. Das Adhikari U, Eng G, Farcasanu M, et al. Fecal SARS-CoV-2 RNA is associated with decreased COVID-19 survival. *Clin Infect Dis* 2021 [Epub ahead of print].
55. Fajnzylber J, Regan J, Coxen K, et al. SARS-CoV-2 viral load is associated with increased disease severity and mortality. *Nat Commun* 2020;11:5493.

Appendix A

Recommended guide for RNA in situ hybridization

RNA in situ hybridization (RNA-ISH) is performed on 5 μm thick formalin-fixed paraffin-embedded (FFPE) sections. SARS-CoV-2 RNA-ISH is performed using the RNAscope 2.5 LS Probe-V-nCoV2019-S catalog number 848568 and RNAscope 2.5 LS Reagent Kit-RED catalog number 322150 (Advanced Cell Diagnostics, Bio-Techne, Minneapolis, MN). RNA probes include RNAscope, hybridization chain reactions (HCRs) designed toward *N1/N2/N3* cDNA of SARS-CoV-2 and human RNase *P* gene loci on the BOND RX automated staining platform (Leica Biosystems, Wetzlar, Germany). For dsRNA probes example reagent: Jena Bioscience (Jena, Germany) Anti-dsRNA monoclonal antibody J2, catalog number RNT-SCI-10010200. Protocol to be provided in appendix. RNA-ISH that detects the replication strand is performed with the RNAscope 2.5 LS Probe- V-nCoV2019-S- Sense Probe, catalog number 845701 (Advanced Cell Diagnostics). RNA-ISH is performed per the standard protocol from ACD Bio-Techne on the Leica BOND RX automated staining platform. The protocol begins with a 1-hour incubation at 60°C followed by pretreatment using the BOND Epitope Retrieval Solution 2 for 15 minutes at 95°C. Then RNA is unmasked using protease for 15 minutes and probe hybridization for 2 hours. Signal is amplified by a series of branched DNA amplification steps followed by color development in red using the BOND Polymer Refine Red Detection kit (Leica Biosystems). Hematoxylin is then performed to counterstain the nuclei on the BOND RX machine. Such RNA probes include RNAscope, HCRs designed toward *N1/N2/N3* cDNA of SARS-CoV-2 and human RNase *P* gene loci.

Note that the gold standard of SARS-CoV-2 titer demonstration via plaque assay or TCID₅₀ require a bio-safety level 3 laboratory setting, which is not achievable in most real-world settings.

Although the test characteristics for SARS-CoV-2 RNA-ISH in placental

samples are not well defined given the limited data in these samples, the D.T.T. laboratory has performed a paired analysis of the Centers for Disease Control and Prevention (CDC) approved quantitative reverse transcription polymerase chain reaction (RT-qPCR) assay and the RNA-ISH in a variety of human autopsy materials from patients who died of COVID-19.⁵³ Using 90 human autopsy samples, the D.T.T. laboratory performed the RT-qPCR assay using a cycle threshold (Ct) cutoff of 42.5 for both *N1* and *N2* primer sets as the gold standard. RNA-ISH in these paired samples had a specificity of 96.7% and a sensitivity of 76.7%. A paired analysis of placenta will be needed to determine the work test characteristics of RNA-ISH in this setting.

Appropriate positive control should be a FFPE specimen that is from an individual confirmed to be positive for SARS-CoV-2 by RT-PCR or RNA-Seq and show positive signal by RNA-ISH in the appropriate tissues. Appropriate negative control should be a similar FFPE specimen that is confirmed to be negative for SARS-CoV-2 by RT-qPCR. Appropriate positive controls include infected lung tissues from patients who died of COVID-19 (autopsy cases) and known infected placentas appropriately preserved; appropriate negative controls include tissues with similar pathologic processes (eg, diffuse alveolar damage in the lung and placental tissues of the same gestational age with similar pathologic features).

Controls should be performed on each lot of RNA-ISH reagents and on each batch run of cases.

An example image of RNA-ISH performed using the above technique is provided in Figure 3.

Appendix B

Recommended protocol for immunohistochemistry

The following antibodies have been validated for immunohistochemistry (IHC) in formalin-fixed paraffin-embedded tissue sections: (1) a rabbit polyclonal antibody raised against the

nucleocapsid protein (Novus Biologicals, Littleton, CO), (2) a rabbit monoclonal antibody raised against the nucleocapsid protein (clone #001; Sino Biological, Beijing, China), and (3) a mouse monoclonal antibody raised against the S2 subunit of the spike protein (clone 1A9; GeneTex, Irvine, CA) (1-3). Sensitivity for the spike protein antibody was validated using immunofluorescence and western blotting (available at: <https://www.genetex.com/Product/Detail/SARS-CoV-SARS-CoV-2-COVID-19-spike-antibody-1A9/GTX632604>) but such studies on tissue sections using brightfield IHC are lacking. IHC using these antibodies requires careful validation for optimal detection and to avoid nonspecific and background staining. For analytical validation of IHC laboratory-developed tests, the College of American Pathologists recommends testing a minimum of 10 positive and 10 negative tissues; when the laboratory medical director determines that fewer than 20 cases are sufficient for a particular marker (eg, rare antigens), the rationale for that decision should be documented (4). The IHC expert in this consensus group (J.L.H.) used infected lung tissues from patients who died of COVID-19 (autopsy cases) as positive controls; negative control cases should include tissues with similar pathologic processes (eg, diffuse alveolar damage in the lung). The appropriate placental negative control in this context would be one with chronic histiocytic intervillitis or massive perivillous fibrin deposition at a similar gestational age in a placenta from pre-pandemic times. In J.L.H.'s laboratory at the Brigham and Women's Hospital, Boston, Massachusetts, IHC was performed after pressure cooker antigen retrieval (pH 6.1 citrate buffer; Target Retrieval Solution, Dako, Agilent Technologies, Santa Clara, CA) using the antispike protein antibody (1A9; 1:1000 dilution) and the EnVision+ detection system (Dako).

An example image of placental Spike IHC performed using the above technique is provided in Figure 4.

Appendix C

Sample protocol for quantitative reverse transcription polymerase chain reaction

Assessment of SARS-CoV-2 RNA was performed using SuperScript III One-Step RT-PCR System with Platinum Taq Polymerase (Invitrogen, Thermo Fisher Scientific, Waltham, MA; containing 0.4 mM of each deoxyribonucleotide triphosphates and 3.2 mM magnesium sulfate), 1 μ L of reverse transcriptase/Taq mixture from the kit, 0.4 μ L of a 50 mM magnesium sulfate solution (Invitrogen—not provided with the kit), and 1 μ g of nonacetylated bovine serum albumin (Roche, Basel, Switzerland). Specific detection of 2019-nCoV was performed using N1 and N2 assays per the CDC guidelines (<https://www.cdc.gov/coronavirus/2019-ncov/lab/rt-pcr-panel-primer-probes.html>). For further validation of the specimens, RNA-dependent RNA polymerase (RdRp) assay was performed. RT-qPCR primers for both RdRp

and N are recommended to confirm SARS-CoV-2 viral infection, rather than the presence of remnant or residual N genes persisting after viral clearance.⁵⁴ A housekeeping gene, such as *RNaseP*, should be used to validate the extraction of RNA from the specimen.

A specimen was considered positive if the gene target has a cycle threshold based on true positive and negative controls in each laboratory generating a receiver operating characteristic curve. We recommend a Ct cutoff of <40 for the limit of detection of 50 copies/mL. The use of semiquantitative methods such as inferring viral burden from Ct values should be confirmed by assessing infectious virions from the specimen (Vero E6 culture). The most rigorous approach is quantitative RT-qPCR, where a standard curve of RNA is generated for quantifying viral load using a CDC positive control. For quantitative RT-qPCR, SARS-CoV-2 viral loads below 40 RNA copies/mL should be catego-

rized as undetectable and set at 1.0 log₁₀ RNA copies/mL. Positive controls are commercially available for several SARS-CoV-2 target genes in a number of formats (eg, New England Biolabs, Ipswich, MA; N2117S, Enzo ENZ-GEN218-0004). Of note, although respiratory and serum or plasma viral loads have been demonstrated to correlate with disease severity and death in a cohort of nonpregnant older adults,⁵⁵ available data suggest that viremia is rare in pregnancy,²⁹ and there is limited data regarding placental viral load and an increased risk of adverse obstetrical or neonatal outcomes, including but not limited to vertical transmission. Regardless, quantitative methods are recommended over semiquantitative or binary (positive or negative) methods, both because of their increased rigor and because quantification of placental viral loads could facilitate future research correlating viral burden with obstetrical or neonatal outcomes.

SUPPLEMENTAL FIGURE

Name	description	oligo seq (5'>3')	Label	conc
2019-nCoV_N1-F	2019-nCoV_N1 Forward Primer	GAC CCC AAA ATC AGC GAA AT	None	20 μ M
2019-nCoV_N1-R	2019-nCoV_N1 Reverse Primer	TCT GGT TAC TGC CAG TTG AAT CTG	None	20 μ M
2019-nCoV_N1-P	2019-nCoV_N1 Probe	FAM-ACC CCG CAT TAC GTT TGG TGG ACC-BHQ1	FAM, BHQ-1	5 μ M
2019-nCoV_N2-F	2019-nCoV_N2 Forward Primer	TTA CAA ACA TTG GCC GCA AA	None	20 μ M
2019-nCoV_N2-R	2019-nCoV_N2 Reverse Primer	GCG CGA CAT TCC GAA GAA	None	20 μ M
2019-nCoV_N2-P	2019-nCoV_N2 Probe	FAM-ACA ATT TGC CCC CAG CGC TTC AG-BHQ1	FAM, BHQ-1	5 μ M
2019-nCoV_N3-F	2019-nCoV_N3 Forward Primer	GGG AGC CTT GAA TAC ACC AAA A	None	20 μ M
RdRP_SARSr-F2	2019-nCoV_RdRP Forward Primer	GTGARATGGTCATGTGTGGCGG		600nM
RdRP_SARSr-R1	2019-nCoV_RdRP Reverse Primer	CARATGTTAAASACACTATTAGCATA		800nM
RdRP_SARSr-P2	2019-nCoV_RdRP Probe	FAM-CAGGTGGAACCTCATCAGGAGATGC-BBQ	FAM,BBQ	100 nM
RdRP_SARSr-P1	2019-nCoV_RdRP Pan-sarbeco Probe	FAM-CAGGTGGWACRTCATCMGGTGATGC-BBQ	FAM,BBQ	100 nM

Roberts et al. Consensus definition of SARS-CoV-2 placental infection. Am J Obstet Gynecol 2021.