



Article

# The Influence of Traffic-Related Air Pollution (TRAP) in Primary Schools and Residential Proximity to Traffic Sources on Histone H3 Level in Selected Malaysian Children

Nur Faseeha Suhaimi <sup>1</sup>, Juliana Jalaludin <sup>1,2,\*</sup> and Suhaili Abu Bakar <sup>3</sup>

<sup>1</sup> Department of Environmental and Occupational Health, Faculty of Medicine and Health Sciences, Universiti Putra Malaysia, Serdang 43400, Malaysia; nurfaseeha91@gmail.com

<sup>2</sup> Department of Occupational Health and Safety, Faculty of Public Health, Universitas Airlangga, Surabaya 60115, Indonesia

<sup>3</sup> Department of Biomedical Science, Faculty of Medicine and Health Sciences, Universiti Putra Malaysia, Serdang 43400, Malaysia; suhaili\_ab@upm.edu.my

\* Correspondence: juliana@upm.edu.my; Tel.: +603-97692401

**Abstract:** This study aimed to investigate the association between traffic-related air pollution (TRAP) exposure and histone H3 modification among school children in high-traffic (HT) and low-traffic (LT) areas in Malaysia. Respondents' background information and personal exposure to traffic sources were obtained from questionnaires distributed to randomly selected school children. Real-time monitoring instruments were used for 6-h measurements of PM<sub>10</sub>, PM<sub>2.5</sub>, PM<sub>1</sub>, NO<sub>2</sub>, SO<sub>2</sub>, O<sub>3</sub>, CO, and total volatile organic compounds (TVOC). Meanwhile, 24-h measurements of PM<sub>2.5</sub>-bound black carbon (BC) were performed using air sampling pumps. The salivary histone H3 level was captured using an enzyme-linked immunosorbent assay (ELISA). HT schools had significantly higher PM<sub>10</sub>, PM<sub>2.5</sub>, PM<sub>1</sub>, BC, NO<sub>2</sub>, SO<sub>2</sub>, O<sub>3</sub>, CO, and TVOC than LT schools, all at  $p < 0.001$ . Children in the HT area were more likely to get higher histone H3 levels ( $z = -5.13$ ). There were positive weak correlations between histone H3 level and concentrations of NO<sub>2</sub> ( $r = 0.37$ ), CO ( $r = 0.36$ ), PM<sub>1</sub> ( $r = 0.35$ ), PM<sub>2.5</sub> ( $r = 0.34$ ), SO<sub>2</sub> ( $r = 0.34$ ), PM<sub>10</sub> ( $r = 0.33$ ), O<sub>3</sub> ( $r = 0.33$ ), TVOC ( $r = 0.25$ ), and BC ( $r = 0.19$ ). Overall, this study proposes the possible role of histone H3 modification in interpreting the effects of TRAP exposure via non-genotoxic mechanisms.

**Keywords:** traffic-related air pollution; primary schools; vulnerable population; indoor air quality; histone H3



**Citation:** Suhaimi, N.F.; Jalaludin, J.; Abu Bakar, S. The Influence of Traffic-Related Air Pollution (TRAP) in Primary Schools and Residential Proximity to Traffic Sources on Histone H3 Level in Selected Malaysian Children. *Int. J. Environ. Res. Public Health* **2021**, *18*, 7995. <https://doi.org/10.3390/ijerph18157995>

Academic Editor: Paul B. Tchounwou

Received: 4 June 2021

Accepted: 21 July 2021

Published: 28 July 2021

**Publisher's Note:** MDPI stays neutral with regard to jurisdictional claims in published maps and institutional affiliations.



**Copyright:** © 2021 by the authors. Licensee MDPI, Basel, Switzerland. This article is an open access article distributed under the terms and conditions of the Creative Commons Attribution (CC BY) license (<https://creativecommons.org/licenses/by/4.0/>).

## 1. Introduction

Large numbers of people reside and work in cities, including Malaysia, as offices, education centers, commercial sites, government hubs, and main transportation terminals are located here. Consequently, more people and buildings around the aforementioned area will cause increased traffic flow, especially during peak hours early in the morning and late in the evening, when most people travel to and from work, respectively. One of the detrimental environmental effects is the air pollution caused by roadside exposure in urban areas and children, who are susceptible to Traffic-Related Air Pollution (TRAP) exposure due to the location of schools and residential areas (within proximity of urban areas), will be affected.

Previous studies have proven that TRAP is associated with respiratory toxicity in different approaches, such as in vitro [1], in vivo [2], and epidemiology [3]. Generation of the reactive oxygen species (ROS) and oxidative metabolites, that trigger the oxidative stress in the cells located at the lung airways, are the main effects of the TRAP that leads to numerous respiratory health effects [4]. In addition, there is significant evidence on the epigenetic changes to the deoxyribonucleic acid (DNA) caused by TRAP [2,5]. Moreover,

some studies have reported on the prevalence of respiratory symptoms in individuals who reside nearby high-traffic roads [6,7].

Epigenetic changes have been considered a link between TRAP and respiratory problems. The epigenetic study is evolving into becoming a promising novel path to determine the potential impacts of air pollution on the human DNA sequence, because some of these epigenetic mechanisms have been linked to diseases such as lung cancer. Studies have shown that the epigenetic modifications activated by environmental agents have unveiled histone modification levels; these changes, found among healthy respondents, are comparable to the observed epigenetic modifications found in patients whose conditions are induced by the same environmental agent [8,9]. Children are more susceptible to TRAP and, hence, their detoxification enzymes are less competent; subsequently, this may cause changes in chromatin structure or DNA, followed by epigenetic modifications [10].

It is crucial to understand the full extent of epigenetics, which is also an important component of the exposome. The exposome is a concept in environmental health that describes human exposure from pre-conception and onwards throughout a person's lifespan [11]. Although epigenetic mechanisms are ideal molecular intermediates of environmental effects, the magnitude of individual environmental exposure that might be mediated through epigenetic mechanisms remains unclear and, hence, calls for more urgently needed research in this area [10]. Moreover, it is vital to understand the impacts that breathing these particles has on our epigenetic signature and our health, as air pollution continues to rise at an alarming rate. However, there are still limited research findings for histone modification, compared with other epigenetic mechanisms, such as DNA methylation, because their molecular pathways are not widely studied [12,13]. Therefore, this study was performed to investigate the association of TRAP with histone H3 modification.

## 2. Materials and Methods

### 2.1. Study Location

The study was performed in Klang Valley, which is centred in Kuala Lumpur, and included its adjacent cities and towns in Selangor. Also known as the Greater Kuala Lumpur, Klang Valley is geographically defined by the Titiwangsa Mountains to the north and east, as well as the Strait of Malacca to the west. The TRAP zone is defined as 500 m on either side of highways with an average daily traffic (ADT) of  $\geq 18,000$  vehicles or 100 m on either side of major roads with an ADT of  $\geq 15,000$ ,  $\geq$  two lanes stretching several km, and a speed limit of  $>50$  km/h [14]. The TRAP was measured at four primary schools located in the TRAP zone, which were categorized as the HT areas for this study. On the other hand, four primary schools in the low-traffic (LT) areas were determined from the location at a distance of more than 5 km away from nearby highways, major roadways, and industrial sites in Selangor (Figure 1). None of the schools in Kuala Lumpur was categorized in the LT sites, because these schools are located in the urban areas. A distance of 5 km was chosen to represent the average distance of traffic exposure [15,16]. These HT and LT sites are located in the same state to minimize confounding factors that might influence the outcome, such as sociodemographic and socioeconomic factors.

### 2.2. Study Population

The cross-sectional comparative study was performed between January and May 2019. The study sample included 248 primary school children, between 7 and 11, who fulfilled the inclusion and exclusion criteria. These respondents were calculated using a sample size calculation by Lemeshow et al. [17] after considering the 20% non-response rate and were selected randomly. Children with a history of doctor-diagnosed chronic respiratory diseases or allergies, unstable heart conditions, or severe respiratory infections were excluded from this research. Consent forms were distributed to be read and signed by parents or guardians. Only children who were given permission were included in the study.

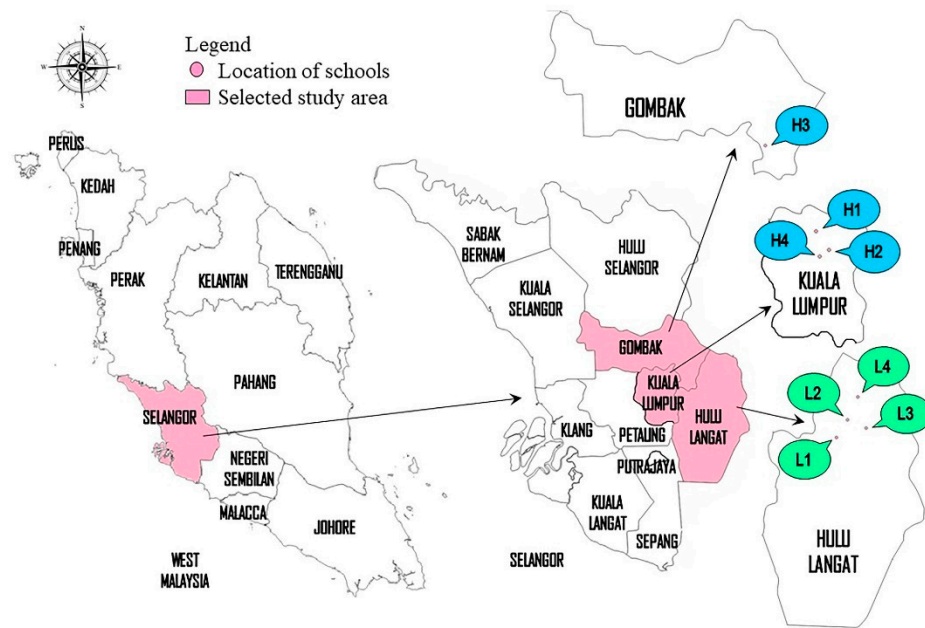


Figure 1. Locations of the selected primary schools.

### 2.3. Questionnaires

Standardized questionnaires from ISAAC and ATS (ATS-DLD-78-C) were adapted and developed to accommodate Malaysia's environment. The questionnaires were filled in by parents or legal guardians of the children. Moreover, the questionnaires were translated from English to Malay and validated by a previous local study [18]. The pre-test of the questionnaire was conducted on at least 10% of the total respondents, which was among 29 respondents. The  $\alpha$  value for the reliability test of Cronbach was deemed as acceptable for  $0.8 > \alpha \geq 0.7$ .

### 2.4. Measurements of TRAP in Schools

The exposure to TRAP has been assessed either by direct measures of traffic or the measurement of air pollutant concentrations. The TRAP in this study, including particulate matter  $\leq 10 \mu\text{m}$  in aerodynamic diameter ( $\text{PM}_{10}$ ), particulate matter  $\leq 2.5 \mu\text{m}$  in aerodynamic diameter ( $\text{PM}_{2.5}$ ), particulate matter  $\leq 1 \mu\text{m}$  in aerodynamic diameter ( $\text{PM}_1$ ), black carbon (BC),  $\text{NO}_2$ ,  $\text{SO}_2$ , TVOC, and CO, were measured based on the method recommended in the manual of each instrument and previous studies. The measurements of  $\text{PM}_{10}$ ,  $\text{PM}_{2.5}$ , and  $\text{PM}_1$  in classrooms were taken using a DustTrak DRX Aerosol Monitor (TSI, Shoreview, MN, USA; model 8534). The data were collected in real-time at each site for 6 h during the school session from 7.20 a.m. to 1.20 p.m. for a 1-min interval, which was done with the incorporation of a data logger.  $\text{NO}_2$ ,  $\text{SO}_2$ , and CO were measured using an air quality monitor (Aeroqual, Auckland, New Zealand; model Series 500), a portable gas sensor. The TVOC was measured using a handheld VOC monitor (RAE Systems, San Jose, CA, USA; model PpbRAE 3000). These instruments also measured air pollutants in real-time and were accompanied by a data logger. The measurements of BC in  $\text{PM}_{2.5}$  were taken using a MiniVol Air Sampler (Airmetrics, Springfield, OR, USA; model 4.2), with samples on 47 mm quartz microfiber filters (Whatman, Marlborough, MA, USA; catalog number 1851-047). This battery-operated instrument was placed on its stand, on the ground, to sample ambient air at 5 L/min.

This cross-sectional study assessed air pollutants in multilevel classrooms from the ground to the first and second floors, because air pollutants mix to a different height in the school building. Hence, air pollutants measurements were varied from floor to floor, due to the deposition behaviors of air pollutants. For indoor monitoring, the instruments were positioned at the back of the classrooms (to minimize interference with everyday activities

in the classroom); they were explicitly placed at 1.0 m above the floor at the back of the classrooms, away (at least 0.5 m) from the window, door, and obvious sources of potential contaminants (e.g., bookshelves), as adapted from a previous study [19]. Meanwhile, for outdoor monitoring, they were placed at the location closest to the traffic source (e.g., school fields and guard posts).

### 2.5. Gravimetric and Reflectometric Analysis of BC in Schools

The filter papers used were weighed pre- and post-exposure to determine the concentration in  $\mu\text{g}/\text{m}^3$ . No pre-cleaning was involved for the filter papers. However, each filter paper was wrapped with aluminum foil and pre-baked at 500 °C for 4 h inside a furnace before sampling. Next, the filter media were kept in Petri pad dishes. The filter papers were stored for 48 h in a desiccator and below 25% RH before weighing to reduce water adsorption. The  $\text{PM}_{2.5}$  mass was measured by weighing the filter papers using a semi-micro analytical balance (A&D, San Jose, CA, USA; model GR-202) with 0.01 mg sensitivity. During the travel period, the filter papers were kept in an airtight container with silica gels. A total of 72 filters were collected, including 8 blanks (one for each school). The samples were kept in a desiccator before being analyzed. The calculation of 24-h  $\text{PM}_{2.5}$  measurements in schools is shown in Equations (1) and (2) below, following the manual by Airmetrics:

$$V \left( \text{m}^3 \right) = \frac{60 \frac{\text{min}}{\text{h}} \times \frac{1.7 \text{ L}}{\text{min}} \times 24 \text{ h}}{\frac{1000 \text{ L}}{\text{m}^3}} \quad (1)$$

$$PM \left( \mu\text{g}/\text{m}^3 \right) = \frac{(W_2 - W_1)}{V} \times 10^6 \quad (2)$$

where  $W_1$  is the mass of filter paper before sampling (g),  $W_2$  is the mass of filter paper after sampling (g), and  $V$  is the volume of air sampled ( $\text{m}^3$ ).

BC samples were analyzed using a smoke stain reflectometer (Diffusion Systems, London, England; model EEL 43). This technique applies the measurement of the dark spots on the filter papers via their reflectance of white light, with a presumption of 100% reflection. Then, the absorbed light was transformed into real BC mass concentration after calculating several points throughout the filter paper, which were averaged. The blackness of a sample corresponded to BC content. The calculation of the BC measurement is shown below in Equation (3), as discussed previously, following ISO 9835 for BC standard [20]:

$$BC \left( \mu\text{g}/\text{m}^3 \right) = 3.462 \times 10^9 \left( \frac{A}{V} \ln \left( \frac{R_b}{R_s} \right) \right)^2 + 4.438 \times 10^5 \frac{A}{V} \ln \left( \frac{R_b}{R_s} \right) \quad (3)$$

where  $R_b$  is the intensity of light reflected from a clean filter,  $R_s$  is the intensity of light reflected from a sampled filter,  $A$  is exposed filter area ( $\text{m}^2$ ), and  $V$  is the volume of air sampled ( $\text{m}^3$ ).

### 2.6. Saliva Collection and Processing

Respondents with permission were selected to undergo saliva collection to obtain an epigenetic biomarker of interest, histone H3. The method is effective and simple enough to facilitate among children. This procedure was carried out during school hours at rooms determined by the school management. The transmission of infectious diseases from saliva collection is likely, through active organisms suspended in droplets and aerosolized particles. Gloves were worn when handling the samples. After the saliva had been collected, the outer part of the containers was disinfected with alcohol wipes.

The saliva samples were collected in sterile 60 mL sample containers. Before saliva collection, the respondents had to wash their mouths with running water. Then, the respondents were asked to rub their tongue against the inside of the mouth for 15 s and expectorate saliva every 30 s into the container, on ice, until roughly 10 mL of saliva was collected. The containers were labeled with each respondent's names, identification number, date, and time the sample was taken. Saliva samples were kept at 4 °C in an icebox

with ice packs temporarily. Once the samples had reached the laboratory, the samples were aliquoted into sterile 1.5 mL microcentrifuge tubes (Eppendorf, Hamburg, Germany; catalog no. 0030120086). After that, the samples were centrifuged at  $14,000 \times g$  for 15 min at  $4\text{ }^{\circ}\text{C}$  (MPW, Warszawa, Poland; model MPW-352R). The supernatant from each sample was frozen at  $-80\text{ }^{\circ}\text{C}$  ultra-low temperature freezer (Sanyo, Osaka, Japan; model MDF 192) until extraction and quantification procedure.

### 2.7. Histone Extraction and Histone Modification Analysis

The approach to histone H3 modifications can be seen as a two-stage process: histone extraction and ELISA. The histones were extracted using a histone extraction kit (Epigentek, Farmingdale, NY, USA; catalog no. OP-0006-100), which used acid precipitation to isolate the highly basic histone from the samples. The protocol was adapted from the manufacturer's protocol. Firstly, saliva samples were pre-lysed with a pre-lysis buffer on ice, centrifuged at 10,000 rpm for 1 min at  $4\text{ }^{\circ}\text{C}$ , and the supernatant was discarded. After that, the samples were lysed with a lysis buffer, incubated on ice for 30 min, and centrifuged at 12,000 rpm for 5 min at  $4\text{ }^{\circ}\text{C}$ . Finally, a pH balance buffer was added to the supernatant immediately. Circulating histone H3 was measured using a histone quantification kit (Epigentek, Farmingdale, NY, USA; catalog no. P-3091-96). The protocol was adapted from the manufacturer's protocol.

Firstly, the samples, blank and positive controls, were run in duplicates in the 96-well ELISA plate. Then, the whole plate was covered and incubated at  $37\text{ }^{\circ}\text{C}$  for 60 min in an incubator. Histone H3 modified at specific sites was captured on the strip wells coated with an anti-histone H3 antibody. The reaction solution was removed, and the wells were washed 3 times with a wash buffer. Then, a detection antibody solution was added to each well. The whole plate was covered and incubated at room temperature for 60 min. The reaction solution was discarded, and the wells were washed 4 times with a wash buffer. Subsequently, a color development reagent was added to each well, and the plate was incubated at room temperature for 1 to 10 min (away from light). Finally, a stop solution was added to each well to cease the enzyme reaction. The absorbance or intensity of the color was measured on a microplate reader (Tecan, Männedorf, Switzerland; model Infinite M200) within 2 to 10 min at 450 nm, with an optional wavelength of 655 nm. A standard curve was generated with OD versus positive controls at each concentration point. The slope was determined as OD/ng. The amount of circulating histone H3 was computed using Equation (4), below:

$$H3 \text{ (ng/mL)} = \frac{(\text{Sample OD} - \text{Blank OD})}{\text{Slope} \times \text{Sample Amount } (\mu\text{L})} \times 1000 \quad (4)$$

### 2.8. Statistical Analyses

Data collected were analyzed using a Statistical Package for Science (SPSS) Version 23 (IBM, Armonk, NY, USA), RStudio Version 1.2.1335 (RStudio, Boston, MA, USA) and a GraphPad Prism 8 Version 8.4.2 (GraphPad Software, San Diego, CA, USA). The descriptive analyses were done to convey the important aspects of the data collected, including screening and organizing the data. Then, the collected data were analyzed at the univariate, bivariate, and multivariate levels accordingly.

### 2.9. Quality Control

The adapted questionnaires were pre-tested for 10% of the total respondents to ensure their validity and reliability. The  $\alpha$  value for the reliability test (Cronbach) of 0.812 was deemed as acceptable for  $\alpha \geq 0.7$ . Each respondent was designated with a specific identification code to ensure anonymity and confidentiality.

Furthermore, the air monitoring equipment was calibrated before performing the measurements. Measurements of each air quality parameter were performed based on the method recommended in the manual of each instrument, as well as previous studies [21–23].



The equipment was kept clean, maintained, and checked regularly after use. They were also calibrated to zero before each measurement.

The PM<sub>10</sub>, PM<sub>2.5</sub>, and PM<sub>1</sub> in schools were measured in the unit of µg/m<sup>3</sup> using DustTrak DRX Aerosol Monitor for 6 h, based on the principle of light scattering. This instrument can detect aerosol concentration ranges from 0.001 to 150 mg/m<sup>3</sup>. Therefore, it can simultaneously measure both mass and size fraction concentration, corresponding to PM<sub>10</sub>, PM<sub>2.5</sub>, and PM<sub>1</sub>.

The BC in PM<sub>2.5</sub> was measured gravimetrically in the unit of µg/m<sup>3</sup> by using a MiniVol for 24 h, with samples on a quartz microfiber filter paper. The flow rate and elapse time of MiniVol were recorded before and after sampling. The two impactors of the MiniVol were cleaned and greased on the seventh sampling. These samples were then analyzed by using a smoke stain reflectometer. The blackness of a sample corresponds to the BC content after the calculation of several absorbed light points throughout the filter paper.

NO<sub>2</sub>, SO<sub>2</sub>, CO, and O<sub>3</sub> were measured in the unit of parts per billion (ppb) using an Aeroqual S500, a portable gas sensor that accurately measures air pollutants in real-time. Sensors were mounted on an interchangeable cartridge that was installed to the monitor base. The sensors could be easily removed and replaced, so many gases can be measured using the same body. Each sensor head was equipped with an active sampling fan that guarantees a representative sample, increasing the measurement accuracy.

The presence of TVOC was assessed using a VOC monitor, which is a handheld gas monitor. It has a photoionization detector that provides instantaneous readings and ppb detection for gases, ranging from 1 ppb up to 10,000 ppb.

Meanwhile, the fresh saliva samples were kept at 2–7 °C in an icebox with ice packs for up to 24 h before being transported to a laboratory. Next, each respondent's extracted saliva samples were preserved in a –80 °C freezer in the laboratory before carrying out the ELISA test. The histone H3 levels were calculated from the calibration curve.

### 3. Results and Discussion

#### 3.1. Background Information

At the beginning of the study, 646 questionnaires were delivered, but only 536 questionnaires were returned, about 83%. After choosing only those who fulfilled the inclusion criteria, were granted permission by parents/guardians to participate in this research entirely, and did not withdraw from the biological sampling, there were a total of 248 children in this study, with 124 children from the high-traffic areas (and the other 124 children from the low-traffic areas). Table 1 shows the sociodemographic background of respondents from both areas. Overall, there was no significant difference between the two groups at  $p < 0.05$  for all sociodemographic factors. According to primary school classification in Malaysia, 7–9 years old are classified as lower, while 10–12 years old are classified as upper primary school children. Nevertheless, 12-year-old children were excluded by the school management because they needed to prepare for the Primary School Evaluation Test.

Although the children were chosen according to their schools' locations, whether in the HT or the LT region, it is arduous to restrict their residences' locations. The types of properties and distances of residences from main roads, highways, and factories also guarantee that the difference between the two areas ruled each area's exposure. A highway is a network of federal roads, while the main road is a network of state roads, as gazetted by the Malaysian Public Works Department [24]. It is shown that there were significant differences in the types of properties and the distances of residences from the highway between both groups at  $p < 0.001$ . Landed residences are residences on a whole piece of land, whereas strata residences are residences in a multi-story building, such as an apartment. In contrast, there was no significant difference in the distance of residences from main roads and factories between both groups at  $p < 0.05$ .

**Table 1.** Background of respondents.

Variables	HT (N = 124)	LT (N = 124)	$\chi^2$	p
	Number (%)			
		Age		
7–9 years	59 (47.6)	63 (50.8)	0.26	0.611
10–11 years	65 (52.4)	61 (49.2)		
		Gender		
Boy	65 (52.4)	53 (42.7)	2.33	0.127
Girl	59 (47.6)	71 (57.3)		
		Types of Residence		
Landed	53 (42.7)	112 (90.3)	63.04	<0.001 *
Strata	71 (57.3)	12 (9.7)		
		Distance of Residence from Highways		
<500 m	77 (62.1)	7 (5.6)	88.21	<0.001 *
≥500 m	47 (37.9)	117 (94.4)		
		Distance of Residence from Main Roads		
<500 m	106 (85.5)	107 (86.3)	0.033	0.855
≥500 m	18 (14.5)	17 (13.7)		
		Distance of Residence from Factories §		
<5 km	12 (9.7)	4 (3.2)	4.28	0.070
≥5 km	112 (90.3)	120 (96.8)		

\* Significant at  $p < 0.05$ ; § By  $\chi^2$  test with Yates' correction for expected value < 5.

### 3.2. Estimation of Residential Proximity to Traffic Sources

Road proximity in this study was determined as the distance to the nearest major road (to estimate the TRAP), as previously applied [25,26]. Table 2 shows the number of respondents who reported the number of vehicles around their residences on weekdays and weekends. This information was obtained from the questionnaires. There were more vehicles reported around residential areas of the HT group than the LT group. Most of the LT group respondents (≥50%) reported that the number of vehicles around their residences was less than 100 per day, either during weekdays or weekends. However, there were different patterns for the HT group. Furthermore, cars and motorcycles were mainly reported to be <100 per day during weekends, while buses and lorries were mainly reported to be <100 per day, either during weekdays or weekends.

**Table 2.** Number of vehicles reported by respondents around their residences on weekdays and weekends.

Variables	HT (N = 124)	LT (N = 124)	$\chi^2$	p
	Number (%)			
		Weekdays		
		Car		
<100 vehicles/day	53 (42.7)	91 (73.4)	23.91	<0.001 *
≥100 vehicles/day	71 (57.3)	33 (26.6)		
		Bus §		
<100 vehicles/day	109 (87.9)	122 (98.4)	9.09	0.003
≥100 vehicles/day	15 (12.1)	2 (1.6)		
		Lorry		
<100 vehicles/day	111 (89.5)	118 (95.2)	2.79	0.095
≥100 vehicles/day	13 (10.5)	6 (4.8)		
		Motorcycle		
<100 vehicles/day	59 (47.6)	85 (68.5)	11.19	0.001 *
≥100 vehicles/day	65 (52.4)	39 (31.5)		

Table 2. Cont.

Variables	HT (N = 124)	LT (N = 124)	$\chi^2$	p
	Number (%)			
Weekends				
Car				
<100 vehicles/day	69 (55.6)	89 (71.8)	6.98	0.008 *
≥100 vehicles/day	55 (44.4)	35 (28.2)		
Bus §				
<100 vehicles/day	109 (87.9)	122 (98.4)	9.09	0.003
≥100 vehicles/day	15 (12.1)	2 (1.6)		
Lorry §				
<100 vehicles/day	112 (90.3)	120 (96.8)	3.27	0.070
≥100 vehicles/day	12 (9.7)	4 (3.2)		
Motorcycle				
<100 vehicles/day	71 (57.3)	88 (71.0)	5.07	0.024 *
≥100 vehicles/day	53 (42.7)	36 (29.0)		

\* Significant at  $p < 0.05$ ; § By  $\chi^2$  test with Yates' correction for expected value  $< 5$ .

The exposure to TRAP varies in urban areas. The location and design of this study supported the assessment of the impact of TRAP in the Klang Valley region, where regional air pollution levels are relatively high [27,28]. This particular study area enabled a better focus on the variations in air quality related to localized TRAP. As proxies for TRAP exposure, residential proximity to the nearest major road and its traffic density were applied to investigate the relationships between TRAP exposure and health effects. Moreover, staying along heavily traveled roads is connected with an elevated risk of TRAP exposure [29].

Different approaches have been employed to determine the impact of residential TRAP on children. Self-reported traffic surveys are cost-effective to gather but inevitably subject to different perceptions and biases. Compared to objective quantitative exposures, self-reported traffic estimations, such as estimations of traffic counts around the residences or traffic annoyances, have demonstrated that subjective evaluations are robust in homogenous populations, particularly in urban areas [6]. While several previous research studies on respiratory diseases employing exposures to TRAP have been carried out, some studies have also shown associations using traffic indicators [30,31]. These indicators help to concentrate on air emissions linked explicitly to transportation.

Most of the HT group respondents live in strata houses, while most LT group respondents live in landed houses. The development within the urban vicinity has propelled more strata houses to accommodate the highly populated community. Low-cost flats are the most common residence type in the HT area, while traditional settlements are the most common type of residence in the LT area. To understand the source of outdoor pollutants exposure in residences, the location of each respondent's residence was also assessed, based on information obtained from questionnaires. When economic growth and development were brought to urban areas, this affected the surrounding area and the recently built neighborhood within the vicinity, including establishing more road networks to transport human resources, supplies, and products. This finding agrees with a previous local study, which found a similar finding, whereby the location of their respondents' residences from main roads was significantly different ( $p = 0.001$ ) between the preschool children from the industrial and non-industrial group [32].

### 3.3. Concentrations of Air Pollutants in Schools

The indoor monitoring results are shown in Figure 2a. It was revealed that the exposure to TRAP was significantly higher for the HT group compared to the LT group. There were significant differences for all TRAP parameters between both groups at  $p < 0.05$ . On the other hand, the results for outdoor monitoring are displayed in Figure 2b. It was found that the exposure to TRAP was significantly higher for the HT group than the LT group. Only BC had 32 filter samples each for indoor and outdoor monitoring, due to



its 24-h measurement duration, whereas the other parameters were measured for 6-h each session.

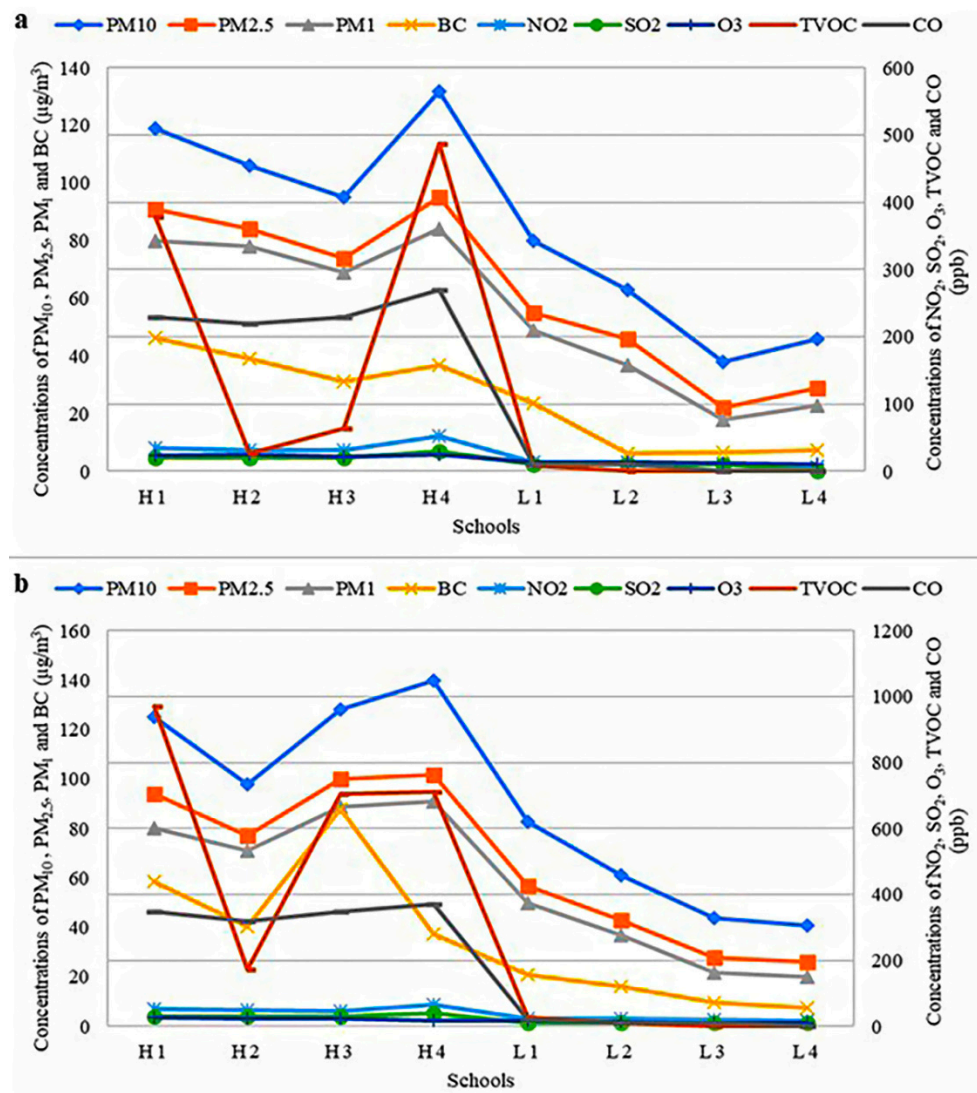


Figure 2. Average of (a) indoor and (b) outdoor air pollutants of the selected schools for five school days.

A local study discovered that BC was one of the major components of  $\text{PM}_{2.5}$ , with a weight fraction of about 16% [33]. They conducted their studies at a site in Klang Valley, which was within a 15 km distance from all the schools in this study. Emissions with high BC typically represent incomplete combustion from motor vehicles, primarily diesel. When congestion occurs on roads, the speeds of vehicles and the following distance to other vehicles are reduced; hence, emissions from one vehicle can penetrate nearby vehicles [34]. BC has been associated with various health effects, such as cardiovascular disease, ischemic heart disease, asthma, and lung cancer [35]. A study in the Pearl River Delta region (China) had confirmed the possibility of carcinogenicity in children caused by BC exposure, by estimating an excess of 1.97 cancer cases per 10,000 children [36]. Meanwhile, a study in Chiang Mai (Thailand) had reported the health risks posed by BC was found comparable to a high number of passively smoked cigarettes, regarding the risk of percentage of lung function reduction of school-aged children [37]. There is no regulation for BC in Malaysia, but many  $\text{PM}_{2.5}$  reduction efforts should drive to decline BC exposure, particularly in the transportation scope.

Although a local study mentioned biomass burning is the second-highest PM contributor in Klang Valley [38], there was no haze occurrence during the sampling period. As for the outdoor sources caused by human activities, PM<sub>10</sub> is commonly released from roadways, construction, and agricultural activities, whereas PM<sub>2.5</sub> is commonly released from industrial processes and motor vehicles. A local study reported that PM<sub>2.5</sub> in Klang Valley was contributed mainly by road dust and mixed secondary inorganic aerosol at about 32.4% to the PM<sub>2.5</sub> mass [38]. Although PM<sub>2.5</sub> continues to suspend in the air for several days and can be dispersed by winds across long distances from the initial source, PM<sub>2.5</sub> may remain suspended in the air for quite some time [23]. Owing to its fine consistency, PM<sub>2.5</sub> can be brought more deeply into the lungs and is deposited in the alveolar sacs [39]. The entry of PM<sub>2.5</sub> into the respiratory system triggers a robust inflammatory response via phlegm, an indicator of mucus production [40]. The deposition of inhaled particles depends on the dimension of the airways; hence, there are differences in the dose deposited in various regions of the respiratory tract [41]. This mechanism explains why higher concentrations of particles may accumulate in children's lower respiratory tract, compared to adults.

NO<sub>2</sub> is classically regarded as a proxy for road traffic in outdoor city backgrounds, although it is not undoubtedly independent of other TRAP-related exposures [5]. A previous study had proven that NO<sub>2</sub> is more dependent on traffic parameters than meteorological parameters [42] because NO that is emitted by vehicles undergoes a chemical reaction to generate NO<sub>2</sub>. Therefore, heavy traffic density around the schools in the HT area contributed to the high concentrations of NO<sub>2</sub>. NO<sub>2</sub> has been implicated in the aetiology of oxidative damage [43]. By inducing the formation of the reactive oxygen species, NO<sub>2</sub> causes cellular injury that triggers a cytokine response, which results in inflammation [44] and airflow obstruction [45].

Some schools (L1, L2, L3, and L4) reported very low SO<sub>2</sub> concentration, which was below the limit of detection (LOD) at <10 ppb. This detection limit was defined by the lowest measurement detected by the instruments used in this study. In general, SO<sub>2</sub> is generally emitted from industrial activities [46]. However, motor vehicles and, primarily, diesel-engined buses and lorries are likely to be the principal SO<sub>2</sub> source at these selected schools. In a previous local study, sulfur from the combustion of engine fuel in petrol and diesel was found to add to the amount of SO<sub>2</sub> in the environment, particularly in urban areas and suburban regions [47]. In contrast, fewer vehicles were traveling around the LT area, compared to the HT area. Moreover, there is no major industrial area, in both HT and LT areas, which removes the industrial source for SO<sub>2</sub>. SO<sub>2</sub> has been associated with eye irritation, breathing problems, chest pains, heart disease, and respiratory mortality [48]. Inhalation of highly soluble SO<sub>2</sub> will be metabolized into sulfites, which can interrupt DNA synthesis and activate chromosomal abnormality [3].

The concentration of ground O<sub>3</sub> is highly dependent on the local emissions of O<sub>3</sub> precursors (NO<sub>x</sub> and VOC), solar intensity, and the local temperature [49]. Hence, the higher concentrations of VOC and NO<sub>2</sub> in HT areas can influence O<sub>3</sub> formation significantly, which were most likely sourced from vehicle emissions. This finding agrees with a previous local study, which reported that vehicular and industrial emissions might release higher O<sub>3</sub> concentrations than the geographical proximity [50]. O<sub>3</sub> can cause respiratory effects such as breathing difficulty and airway inflammation, which can later aggravate lung diseases and may even lead to premature deaths [51]. O<sub>3</sub> contributes to cough by initiating action potentials in the nerve fibres, which are situated to sense the inhaled air environment [52].

Several schools (L1, L2, L3, and L4) recorded very low TVOC concentration (below LOD at <1 ppb). This detection limit was defined by the lowest measurement detected by the instruments used in this study. Although TVOC typically records higher concentration indoors, the findings in this study did not show similar outcomes because there was a limited source of TVOC, such as paints and floorings. The detected TVOC concentration was most likely contributed by traffic emissions outdoors, such as benzene, ethylbenzene, ethylbenzene, and xylene, as previous local studies had reported [49,53]. These four aro-

atics compounds are more commonly known as BTEX, resulting from traffic exhaust emissions and indoor sources. The classrooms at H1 and H4 schools were close to congested main roads and highways, especially during morning rush hours. Therefore, the outdoor TVOC released from vehicular emissions could have penetrated the classrooms. TVOC may irritate the eyes, nose, and throat, causing headaches and fatigue [54]. The TVOC are likely responsible for acute and chronic health effects, such as eye, nose, and throat irritation, as well as headache, fatigue, cardiovascular disease, blood-related diseases, and irreversible kidney failure [54,55].

Some schools (L1, L2, L3, and L4) reported very low CO concentration (below LOD at <10 ppb). This detection limit was defined by the lowest measurement detected by the instruments used in this study. The highest concentrations of CO were observed during peak hours, between 7.00 a.m. to 9.00 a.m., which was due to the massive traffic at those times. These findings are comparable with a local study, conducted in Kuala Lumpur, which discovered that higher CO emissions could be rooted in vehicles with higher cumulative travel mileage, engine modification, and no emission control device [56]. They also found that the lowest emission factors of CO were from vehicles with mileage below 20,000 km. CO is produced mainly by the incomplete combustion of vehicle fuel engines. Excessive TVOC and CO emissions are usually formed when the engine undergoes transmission conditions, such as during acceleration [57]. Driving around Klang Valley involves frequent accelerations and decelerations, due to the congestion of vehicles on the road. CO is recognized to be toxic at high concentrations and causes lung damage by competing with oxygen to bind to hemoglobin, thus reducing oxygen carrying efficiency [58]. Exposure to CO has been reported to lead to respiratory symptoms such as coughing, phlegm, and wheezing [59].

HT schools recorded higher average concentrations of air pollutants than LT schools because, in general, air pollutants were significantly higher at the HT schools than the LT schools, due to the high contribution of heavy traffic density. High-traffic density in Klang Valley is partly attributed to developments of housing complexes, underpasses, and flyovers [3]. School children in their indoor and outdoor environments can be the causes of air emissions in the classroom; for example, the movement of children inside and outside of the classroom contributes to the accumulation of PM in the classroom. Moreover, both anthropogenic activities and natural sources emit PM, whereas industrial activities or automobile exhaust release CO, SO<sub>2</sub>, and NO<sub>2</sub> [46]. There are also percentages of sources other than traffic in TRAP, which complicates the segregation of the traffic impact.

### 3.4. The Trend of Air Pollutants in Nearby Continuous Air Quality Monitoring (CAQM) Stations

Batu Muda and Cheras stations were the nearest CAQM stations from the selected HT schools (and located in the city center of Kuala Lumpur). There was no CAQM station near the selected LT schools. Therefore, comparisons could only be made between primary data measured in HT schools and secondary data obtained from nearby CAQM stations. However, the comparison can only be made in terms of trend because there were differences in the type of instruments deployed between both measurements; hence, there were different flow rates.

Both stations show that PM<sub>10</sub> and PM<sub>2.5</sub> concentrations tend to peak around 9 a.m. For NO<sub>2</sub>, there is a very pronounced increase in concentrations during the peak morning rush hour. O<sub>3</sub> shows very different behavior because O<sub>3</sub> reacts with NO<sub>2</sub>. There is a very pronounced increase in O<sub>3</sub> concentrations in the afternoon, between 2 and 3 p.m. CO and SO<sub>2</sub> had similar daily trends. Just like NO<sub>2</sub>, CO showed a very pronounced increase in concentrations during the peak morning rush hour. These trends indicate very similar source origins, which are most likely traffic emissions.

Factors that impact air pollution distribution are wind speed (WS), wind direction (WD), ambient temperature (AT), relative humidity (RH), and solar radiation (SR). Meteorological conditions determine outflow strength and depend on megacity geographic location and the season for the period of emission [60]. Pollution Rose by RStudio is useful

for considering pollutant concentrations by WD, or more specifically, the percentage time the concentration is in a particular range. This type of approach can be very informative regarding the air pollutant species. Figure S1 shows the dominance of north-easterly winds controlling the overall mean of PM<sub>10</sub>, PM<sub>2.5</sub>, NO<sub>2</sub>, SO<sub>2</sub>, O<sub>3</sub>, and CO concentrations at Batu Muda station. Meanwhile, most of the higher PM<sub>10</sub>, PM<sub>2.5</sub>, NO<sub>2</sub>, SO<sub>2</sub>, and CO concentrations at Cheras station are also associated with the easterly winds, as shown in Figure S2. Southern winds mainly influenced only O<sub>3</sub> concentrations at Cheras station. These data presented the measurements at both CAQM stations throughout the year 2019.

Referring to Batu Muda station, WD is predominantly from the east and relatively low WS (0–2 m/s) throughout the year. WS is the highest in March (1.31 m/s) and the lowest in November (0.69 m/s). Both higher and lower concentrations of PM<sub>10</sub> (Figure S1a), PM<sub>2.5</sub> (Figure S1b), NO<sub>2</sub> (Figure S1c), SO<sub>2</sub> (Figure S1d), and CO (Figure S1f) at Batu Muda station are generally associated with northeast wind sectors. However, O<sub>3</sub> concentrations at the Batu Muda station recorded non-similar findings; higher concentrations of O<sub>3</sub> are generally associated with southeast wind sectors, while lower concentrations of O<sub>3</sub> are generally associated with northeast wind sectors (Figure S1e).

Referring to Cheras station, WD is also predominantly from the east and relatively low WS (0–2 m/s) throughout the year. WS are the highest in August (1.11 m/s) and the lowest in February (0.88 m/s). Both higher and lower concentrations of PM<sub>10</sub> (Figure S2a), PM<sub>2.5</sub> (Figure S2b), NO<sub>2</sub> (Figure S2c), SO<sub>2</sub> (Figure S2d), and CO (Figure S2f) at Cheras station are generally associated with easterly wind sectors. However, O<sub>3</sub> concentrations at Cheras station recorded non-similar findings; higher concentrations of O<sub>3</sub> are generally associated with southerly wind sectors, while lower concentrations of O<sub>3</sub> are generally associated with easterly wind sectors (Figure S2e).

All selected HT schools and both stations are in Klang Valley. The topography and climate of the Klang Valley have the potential to trap air pollutants [61]. Due to the valley topography and insufficient flushing along the valley that runs from the hilly terrain to the north, southeast, and the Malacca Straits in the west, pollutants are restricted [62]. It is experiencing worse air pollution problems due to increased traffic volume, urbanization, and industrial activities. Malaysia experiences four seasons, which are the northeast monsoon (NE) from December to March, inter-monsoon 1 (IM1) from April to May, southwest monsoon (SW) from June to September, and inter-monsoon 2 (IM2) from October to November [63]. On average, these monsoon seasons yield more rainfall than hot seasons with higher RH, lower SR, and lower AT. Klang Valley encountered the SW and IM1 during the study period (January–May).

H1, H2, H3, and H4 are located within 2.3 km (163° SE), 5.6 km (152° SE), 8.7 km (100° SE), and 5.9 km (168° SE) from the Batu Muda station. However, the wind that comes from these directions was <10% of the time during the study period except for H3, which had ~25%. Most higher concentrations of PM<sub>10</sub>, PM<sub>2.5</sub>, NO<sub>2</sub>, SO<sub>2</sub>, O<sub>3</sub>, and CO concentrations are associated with the NE. The dominance of north-easterly winds (46–75° WD) controlling the overall mean of air pollutants at Batu Muda station (Figure S1) is associated with the heavily populated outflow and massive regional traffic flow in North-eastern Kuala Lumpur, such as Wangsa Maju and Setiawangsa. The winds were calm most of the time throughout the study period, between 1.1 and 2.2%, despite monsoon seasons. It may get a little chilly after heavy rain, but Klang Valley is one of the areas least affected by monsoon winds coming either from the east or west [63].

H1, H2, H3, and H4 are located within 10.0 km (342° NW), 7.0 km (350° NW), 11.4 km (25° NE), and 6.5 km (337° NW) from the Cheras station. Nevertheless, the wind that comes from these directions was <5% of the time throughout the study period. The dominance of easterly winds (166–105° WD) was controlling the overall mean of air pollutants at Cheras station during NE monsoon, while the dominance of north-easterly winds (46–75° WD) controlling the overall mean of air pollutants at Cheras station during IM1 (Figure S2). These higher concentrations of air pollutants could be due to the transfer of air pollutants

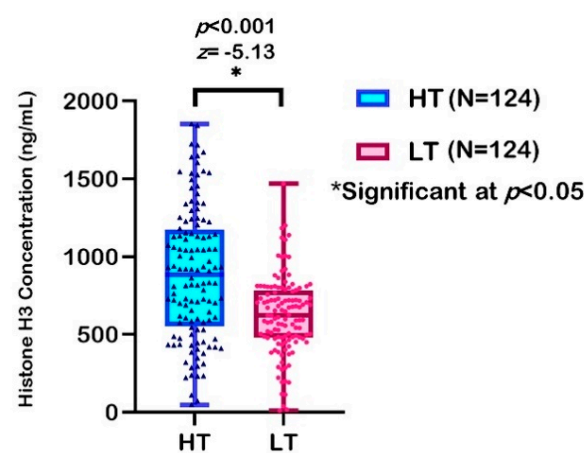


from the upwind area to the downwind area. The winds were calm most of the time throughout the study period, between 0 and 0.5% despite monsoon seasons.

### 3.5. Level of Histone H3 Modification

Circulating histones interact with membrane phospholipids by acting as mediators for organ injury, such as lungs [64]. Circulating histone H3 ELISA kit specific for humans was used to determine the concentration of histone H3 in saliva samples obtained from the respondents. This research is the first human study conducted in Malaysia to study exposure to air pollutants by associating them with histone H3 modifications among respondents, so there is no normal value for histone H3. Therefore, the median value was used as a cut-off point. Non-parametric analysis disclosed a significantly different level of histone H3 between the two groups. The median level was 885.10 (620.04) ng/mL in the HT group, which was significantly higher than that in the LT group at 623.41 (305.10) ng/mL ( $z = -5.13, p < 0.001$ ).

A previous study reported that 76.5% of patients with severe blunt trauma (with circulating histone levels  $\geq 50$   $\mu\text{g/mL}$ ) experienced a respiratory breakdown, compared to 18.8% who had histone levels below this limit [64]. In another study, 75% of septic patients with histone levels  $\geq 75$   $\mu\text{g/mL}$  had left ventricular dysfunction, compared with 8.3% of patients with histone levels  $< 75$   $\mu\text{g/mL}$  [65]. Both studies used median data, which showed that a high level of circulating histones is possibly an early biomarker for lung damage and multiple organ dysfunction. In comparison to these two studies, the threshold histone H3 level obtained in the current study, among healthy children from HT and LT groups, was lower than the threshold level obtained in the previous studies. Figure 3 shows the expression profile of histone H3 level among both groups.



**Figure 3.** Expression profile of histone H3 modification between two groups of respondents.

### 3.6. Relationships between Children's Mode of Transport to Schools and Histone H3 Level

Traffic emissions lead to the accumulation of air pollutants in the atmosphere. Regardless of the school location, the comparisons between the children's transport mode to schools and the histone H3 levels are reported in Table 3. These vehicles were further classified into "open vehicle" or "closed vehicle"; walk and motorcycle were categorized into "open vehicle", whereas car and motorcycle were categorized into "closed vehicle". Table 3 also displays the associations between the children's mode of transport to schools and the histone H3 level. There was no significant association between the children's mode of transport to school and the histone H3 level at  $p < 0.05$ . These findings could be due to the round-trip duration of time taken from home to school, which varies according to the type of vehicles, as shown in Table 3. Children who went to school by bus spent the most time on the road, followed by those who traveled by car, motorcycle, and walking. Children may be exposed to TRAP during the round-trip transport from their residences to



schools, although the duration is short. Moreover, studies have proven high concentrations of air pollutants at pedestrian crossings, traffic intersections, and junctions [56,66].

**Table 3.** Relationships between children’s mode of transport to schools and histone H3 level.

Variables	Duration (minute)				High Histone H3 Level, N (%)	OR	95% CI
	Min	Max	Mean	SD			
Comparisons							
Car (N = 94)	2	60	14.7	12.7	48 (51.1)		
Bus (N = 8)	5	30	15.9	8.3	6 (75.0)		
Walk (N = 22)	2	10	6.9	3.4	15 (68.2)		
Motorcycle (N = 124)	1	30	10.0	6.1	50 (40.3)		
Associations							
Open (N = 146)					54 (52.9)	1.40	0.84–2.33
Closed (N = 102)					65 (44.5)		

Those who walked or rode motorcycles to schools were deemed to have higher exposure to TRAP during the round-trip travel period from home to school because they were exposed to inhaling pollutants from vehicle emissions. A previous study in Indonesia had testified that the time spent in and near vehicles had enormously contributed to the children’s daily exposure to TRAP [67]. Moreover, most Malaysian roads are choked with different vehicle types in the same lane [68]. Nonetheless, some of the users in closed vehicles tend to open the windows of the vehicles. Based on the findings in this study, 4 children (50.0%) who traveled by bus and 67 children (71.3%) who traveled by car to school reported open windows at least once during the round-trip travel period from home to school. These findings could be explained by higher exposures to air pollution experienced by those who used open transport vehicles than those who used closed transport vehicles. Besides, the health effects worsen when the same concentrations of air pollutants exposed to adults are also exposed to children.

### 3.7. Relationships between Respiratory Symptoms and Histone H3 Level

The prevalence of respiratory symptoms among school children has been reported earlier in another article [69]. Table 4 shows the associations between the reported respiratory symptoms and histone H3 level. There was no significant association between reported respiratory symptoms and histone H3 level at  $p < 0.05$ , except for cough. Cough was 3 times more likely to occur among those with a higher histone H3 level ( $p = 0.004$ , 95% CI = 1.39–6.58).

**Table 4.** Associations between reported respiratory symptoms and histone H3 level.

Respiratory Symptoms	Histone H3 OR (95% CI)
Cough	3.0 (1.39–6.58) *
Phlegm	2.8 (0.96–8.07)
Wheezing	2.1 (0.69–6.30)
Chest Tightness	1.3 (0.30–6.14) §

N = 248; \* Significant at  $p < 0.05$ ; § By  $\chi^2$  test with Yates’ correction for expected value  $< 5$ .

Exposure to air pollution generally causes oxidative stress [70], later regulating histone H3 and DNAm [71]. These epigenetic mechanisms modulate the gene expression by being responsive to changes in the environment of a cell, including the oxidative stress that leads to respiratory health effects [72]. Air pollutants, in the form of a foreign matter, could be the original elicitor that provokes cough; hence, it causes traumatic inflammation in the airways [73]. Asthma is one of the most prevalent inflammatory diseases, characterized by respiratory symptoms of varying severity. Many asthma-related genes undergo histone



among the children in the HT group than those in the LT group. The children were exposed to TRAP from their transport mode to schools, the round-trip travel period from residences to schools, and their time spent at schools or homes. However, the extracted saliva samples had established uncertainty on which cell types were involved in the detection of the circulating histones; future research is needed to identify the cell types responsible for these findings.

Therefore, this study recommends maximizing the distance between future school sites and heavily traveled roadways to greatly reduce the level of exposure children may have to TRAP. Although it is better that schools are located further from heavily traveled roads, it is not easy to relocate existing schools, especially in Klang Valley, where the populations are increasing, but the available lands are reducing. Thus, road traffic density should be lessened around existing schools.

**Supplementary Materials:** The following are available online at <https://www.mdpi.com/article/10.3390/ijerph18157995/s1>, Figure S1: Pollution rose of (a) PM<sub>10</sub>, (b) PM<sub>2.5</sub>, (c) NO<sub>2</sub>, (d) SO<sub>2</sub>, (e) O<sub>3</sub>, and (f) CO in Batu Muda station in 2019; Figure S2: Pollution rose of (a) PM<sub>10</sub>, (b) PM<sub>2.5</sub>, (c) NO<sub>2</sub>, (d) SO<sub>2</sub>, (e) O<sub>3</sub>, and (f) CO in Cheras station in 2019.

**Author Contributions:** Conceptualization, J.J. and N.F.S.; methodology, J.J., N.F.S. and S.A.B.; software, N.F.S.; validation, J.J. and S.A.B.; formal analysis, N.F.S.; investigation, J.J. and N.F.S.; resources, J.J., N.F.S. and S.A.B.; data curation, N.F.S., J.J. and S.A.B.; writing—original draft preparation, N.F.S.; writing—review and editing, J.J. and S.A.B.; visualization, N.F.S.; supervision, J.J.; project administration, J.J.; funding acquisition, J.J. All authors have read and agreed to the published version of the manuscript.

**Funding:** This research was funded by the Ministry of Higher Education Malaysia under the Fundamental Research Grant Scheme (FRGS) project (Project Code: FRGS/1/2019/SKK06/UPM/02/6).

**Institutional Review Board Statement:** The study was conducted according to the guidelines of the Declaration of Helsinki and approved by the ethics committee for research involving human subjects, Universiti Putra Malaysia (reference no.: JKEUPM-2018-278).

**Informed Consent Statement:** Informed consent was obtained from all subjects involved in the study.

**Data Availability Statement:** Not applicable.

**Acknowledgments:** We would like to express our appreciation to the respondents, parents, guardians, school management, and teachers for their cooperation during the data collection process. Special thanks to the laboratory staffs of the Environmental Health Lab, Physiology Lab, and Cell Signaling Lab (Faculty of Medicine and Health Sciences, Universiti Putra Malaysia) for their technical support. N.F.S. would like to acknowledge the scholarships provided by the Universiti Putra Malaysia (UPM/PEND/500-1/10/1) and the Ministry of Higher Education Malaysia (KPM(BS)910801146118).

**Conflicts of Interest:** The authors declare no conflict of interest.

## References

1. Leclercq, B.; Platel, A.; Antherieu, S.; Alleman, L.Y.; Hardy, E.M.; Perdrix, E.; Grova, N.; Riffault, V.; Appenzeller, B.M.; Happillon, M.; et al. Genetic and Epigenetic Alterations in Normal and Sensitive COPD-Diseased Human Bronchial Epithelial Cells Repeatedly Exposed to Air Pollution-Derived PM<sub>2.5</sub>. *Environ. Pollut.* **2017**, *230*, 163–177. [[CrossRef](#)] [[PubMed](#)]
2. Ding, R.; Jin, Y.; Liu, X.; Ye, H.; Zhu, Z.; Zhang, Y.; Wang, T.; Xu, Y. Dose- and Time- Effect Responses of DNA Methylation and Histone H3K9 Acetylation Changes Induced by Traffic-Related Air Pollution. *Sci. Rep.* **2017**, *7*, 43737. [[CrossRef](#)] [[PubMed](#)]
3. Hisamuddin, N.H.; Jalaludin, J.; Yusof, A.N.; Tualeka, A.R. Genotoxic Effects of Exposure to Urban Traffic Related Air Pollutants on Children in Klang Valley, Malaysia. *Aerosol Air Qual. Res.* **2020**, *20*, 2614–2623. [[CrossRef](#)]
4. Suhaimi, N.F.; Jalaludin, J.; Abu Bakar, S. Deoxyribonucleic Acid (DNA) Methylation in Children Exposed to Air Pollution: A Possible Mechanism Underlying Respiratory Health Effects Development. *Rev. Environ. Health* **2021**, *36*, 77–93. [[CrossRef](#)] [[PubMed](#)]
5. Rider, C.F.; Carlsten, C. Air Pollution and DNA Methylation: Effects of Exposure in Humans. *Clin. Epigenet.* **2019**, *11*, 131. [[CrossRef](#)] [[PubMed](#)]
6. Hegseth, M.N.; Oftedal, B.M.; Höper, A.C.; Aminoff, A.L.; Thomassen, M.R.; Svendsen, M.V.; Fell, A.K.M. Self-Reported Traffic-Related Air Pollution and Respiratory Symptoms among Adults in An Area with Modest Levels of Traffic. *PLoS ONE* **2019**, *14*, e0226221. [[CrossRef](#)]

7. Yi, S.-J.; Shon, C.; Min, K.-D.; Kim, H.-C.; Leem, J.-H.; Kwon, H.-J.; Hong, S.; Kim, K.; Kim, S.-Y. Association between Exposure to Traffic-Related Air Pollution and Prevalence of Allergic Diseases in Children, Seoul, Korea. *Biomed. Res. Int.* **2017**, *2017*, 4216107. [[CrossRef](#)]
8. Sharavanan, V.J.; Sivaramakrishnan, M.; Sivarajasekar, N.; Senthilrani, N.; Kothandan, R.; Dhakal, N.; Sivamani, S.; Show, P.L.; Awual, M.R.; Naushad, M. Pollutants Inducing Epigenetic Changes and Diseases. *Environ. Chem. Lett.* **2020**, *18*, 325–343. [[CrossRef](#)]
9. Zheng, Y.; Sanchez-Guerra, M.; Zhang, Z.; Joyce, B.T.; Zhong, J.; Kresovich, J.K.; Liu, L.; Zhang, W.; Gao, T.; Chang, D.; et al. Traffic-Derived Particulate Matter Exposure and Histone H3 Modification: A Repeated Measures Study. *Environ. Res.* **2017**, *153*, 112–119. [[CrossRef](#)]
10. Ferrari, L.; Carugno, M.; Bollati, V. Particulate Matter Exposure Shapes DNA Methylation through the Lifespan. *Clin. Epigenet.* **2019**, *11*, 129. [[CrossRef](#)] [[PubMed](#)]
11. Sariqiannis, D.A. The Exposome: A New Tool for Improved Health Risk Assessment. In *Management of Emerging Public Health Issues and Risks: Multidisciplinary Approaches to the Changing Environment*; Academic Press: Cambridge, MA, USA, 2019; pp. xxiii–xlv. ISBN 9780128132913.
12. Lu, C.; Jain, S.U.; Hoelper, D.; Bechet, D.; Rosalynn, C.; Ran, L.; Murphy, D.; Venneti, S.; Hameed, M.; Bruce, R. Histone H3K36 Mutations Promote Sarcomagenesis through Altered Histone Methylation Landscape. *Science* **2016**, *352*, 844–849. [[CrossRef](#)] [[PubMed](#)]
13. Reddy, D.; Khade, B.; Pandya, R.; Gupta, S. A Novel Method for Isolation of Histones from Serum and Its Implications in Therapeutics and Prognosis of Solid Tumours. *Clin. Epigenet.* **2017**, *9*, 30. [[CrossRef](#)] [[PubMed](#)]
14. Brauer, M.; Reynolds, C.; Hystad, P. Traffic-Related Air Pollution and Health in Canada. *CMAJ* **2013**, *185*, 1557–1558. [[CrossRef](#)]
15. Sopian, N.A.; Jalaludin, J.; Abu Bakar, S.; Hamedon, T.R.; Latif, M.T. Exposure to Particulate PAHs on Potential Genotoxicity and Cancer Risk among School Children Living Near the Petrochemical Industry. *Int. J. Environ. Res. Public Health* **2021**, *18*, 2575. [[CrossRef](#)] [[PubMed](#)]
16. Jalaludin, J.; Syed Noh, S.N.; Suhaimi, N.F.; Md Akim, A. Tumor Necrosis Factor-Alpha as Biomarkers of Exposure to Indoor Pollutants among Primary School Children in Klang Valley. *Am. J. Appl. Sci.* **2014**, *11*, 1616–1630. [[CrossRef](#)]
17. Lemeshow, S.; Hosmer, D.W., Jr.; Klar, J.; Lwanga, S.K. *Adequacy of Sample Size in Health Studies*; World Health Organization: Chichester, UK, 1990; ISBN 0471925179.
18. Jalaludin, J.; Hashim, Z.; Taib, N.M.; Lubis, S.; Hashim, J.H. Comparison on the Influence of Residential Environment to Asthma Attacks among Children in Kuala Lumpur and Terengganu, Malaysia. *Malays. J. Community Health* **2002**, *8*, 51–62.
19. Yang Razali, N.Y.; Latif, M.T.; Dominick, D.; Mohamad, N.; Sulaiman, F.R.; Srithawirat, T. Concentration of Particulate Matter, CO and CO<sub>2</sub> in Selected Schools in Malaysia. *Build. Environ.* **2015**, *87*, 108–116. [[CrossRef](#)]
20. Quincey, P. A Relationship between Black Smoke Index and Black Carbon Concentration. *Atmos. Environ.* **2007**, *41*, 7964–7968. [[CrossRef](#)]
21. Ismail, I.; Jalaludin, J.; Abu Bakar, S.; Hisamuddin, N.; Suhaimi, N. Association of Traffic-Related Air Pollution (TRAP) with DNA Damage and Respiratory Health Symptoms among Primary School Children in Selangor. *Asian J. Atmos. Environ.* **2019**, *13*, 106–116. [[CrossRef](#)]
22. Kamaruddin, A.S.; Jalaludin, J.; Hamedon, T.R.; Hisamuddin, N.H. FeNO as a Biomarker for Airway Inflammation Due to Exposure to Air Pollutants among School Children Nearby Industrial Areas in Terengganu. *Pertanika J. Sci. Technol.* **2019**, *27*, 589–600.
23. Othman, M.; Latif, M.T.; Matsumi, Y. The Exposure of Children to PM<sub>2.5</sub> and Dust in Indoor and Outdoor School Classrooms in Kuala Lumpur City Centre. *Ecotoxicol. Environ. Saf.* **2019**, *170*, 739–749. [[CrossRef](#)] [[PubMed](#)]
24. Public Works Department Malaysia. *Statistik Jalan Malaysia Edisi 2019*; Abd Kasim, M.E., Ismail, M.I., Abdullah, N.S., Hamzah, H.F., Abdullah, F., Muniandy, V., Abd Razak, M.N., Razak, M.A., Hashim, Z., Eds.; Cawangan Senggara Fasiliti Jalan, Ibu Pejabat JKR Malaysia: Kuala Lumpur, Malaysia, 2019.
25. Huang, S.; Lawrence, J.; Kang, C.M.; Li, J.; Martins, M.; Vokonas, P.; Gold, D.R.; Schwartz, J.; Coull, B.A.; Koutrakis, P. Road Proximity Influences Indoor Exposures to Ambient Fine Particle Mass and Components. *Environ. Pollut.* **2018**, *243*, 978–987. [[CrossRef](#)] [[PubMed](#)]
26. Dorans, K.S.; Wilker, E.H.; Li, W.; Rice, M.B.; Ljungman, P.L.; Schwartz, J.; Coull, B.A.; Kloog, I.; Koutrakis, P.; D’Agostino, R.B.; et al. Residential Proximity to Major Roads, Exposure to Fine Particulate Matter and Aortic Calcium: The Framingham Heart Study, A Cohort Study. *BMJ Open* **2017**, *7*, 13455. [[CrossRef](#)]
27. Amil, N.; Latif, M.T.; Khan, M.F.; Mohamad, M. Seasonal Variability of PM<sub>2.5</sub> Composition and Sources in the Klang Valley Urban-Industrial Environment. *Atmos. Chem. Phys.* **2016**, *16*, 5357–5381. [[CrossRef](#)]
28. Mohamad, N.; Latif, M.T.; Khan, M.F. Source Apportionment and Health Risk Assessment of PM<sub>10</sub> in A Naturally Ventilated School in a Tropical Environment. *Ecotoxicol. Environ. Saf.* **2016**, *124*, 351–362. [[CrossRef](#)]
29. Urman, R.; Eckel, S.; Deng, H.; Berhane, K.; Avol, E.; Lurmann, F.; McConnell, R.; Gilliland, F. Risk Effects of Near-Roadway Pollutants and Asthma Status on Bronchitic Symptoms in Children. *Environ. Epidemiol.* **2018**, *2*, e012. [[CrossRef](#)]
30. Mohd Shafie, S.H.; Mahmud, M. Public Perception on Traffic Pollution in Federal Territory of Kuala Lumpur, Malaysia. *Plan. Malays.* **2017**, *15*, 105–114. [[CrossRef](#)]



31. Wendt Hess, J.; Bachler, G.; Momin, F.; Sexton, K. Assessing Agreement in Exposure Classification between Proximity-Based Metrics and Air Monitoring Data in Epidemiology Studies of Unconventional Resource Development. *Int. J. Environ. Res. Public Health* **2019**, *16*, 3055. [[CrossRef](#)] [[PubMed](#)]
32. Kamaruddin, A.S.; Jalaludin, J.; Choo, C.P. Indoor Air Quality and Its Association with Respiratory Health among Malay Preschool Children in Shah Alam and Hulu Langat. *Adv. Environ. Biol.* **2015**, *9*, 17–26.
33. Abdul Rahman, S.; Hamzah, M.S.; Elias, S.; Ashifa, N.; Salim, A.; Hashim, A.; Shukor, S.; Wood, A.K. A Long Term Study on Characterization and Source Apportionment of Particulate Pollution in Klang Valley, Kuala Lumpur. *Aerosol Air Qual. Res.* **2015**, *15*, 2291–2304. [[CrossRef](#)]
34. Dons, E.; Temmerman, P.; Van Poppel, M.; Bellemans, T.; Wets, G.; Int Panis, L. Street Characteristics and Traffic Factors Determining Road Users' Exposure to Black Carbon. *Sci. Total Environ.* **2013**, *447*, 72–79. [[CrossRef](#)] [[PubMed](#)]
35. Janssen, N.A.H.; Hoek, G.; Simic-Lawson, M.; Fischer, P.; van Bree, L.; ten Brink, H.; Keuken, M.; Atkinson, R.W.; Anderson, H.R.; Brunekreef, B.; et al. Black Carbon as an Additional Indicator of the Adverse Health Effects of Airborne Particles Compared with PM10 and PM2.5. *Environ. Health Perspect.* **2011**, *119*, 1691–1699. [[CrossRef](#)] [[PubMed](#)]
36. Lin, W.; Dai, J.; Liu, R.; Zhai, Y.; Yue, D.; Hu, Q. Integrated Assessment of Health Risk and Climate Effects of Black Carbon in The Pearl River Delta Region, China. *Environ. Res.* **2019**, *176*, 108522. [[CrossRef](#)] [[PubMed](#)]
37. Pani, S.K.; Wang, S.H.; Lin, N.H.; Chantara, S.; Lee, C.-T.; Thepnuan, D. Black Carbon over an Urban Atmosphere in Northern Peninsular Southeast Asia: Characteristics, Source Apportionment, and Associated Health Risks. *Environ. Pollut.* **2020**, *259*, 113871. [[CrossRef](#)] [[PubMed](#)]
38. Sulong, N.A.; Latif, M.T.; Khan, M.F.; Amil, N.; Ashfold, M.J.; Abdul Wahab, M.I.; Chan, K.M.; Sahani, M. Source Apportionment and Health Risk Assessment among Specific Age Groups During Haze and Non-Haze Episodes in Kuala Lumpur, Malaysia. *Sci. Total Environ.* **2017**, *601–602*, 556–570. [[CrossRef](#)]
39. Deng, Q.; Deng, L.; Miao, Y.; Guo, X.; Li, Y. Particle Deposition in The Human Lung: Health Implications of Particulate Matter from Different Sources. *Environ. Res.* **2019**, *169*, 237–245. [[CrossRef](#)]
40. Liu, Y.; Zhang, B.; Zhang, T.; Wang, H.; Peng, L.; Zhou, L. Effect of NF- $\kappa$ B Signal Pathway on Mucus Secretion Induced by Atmospheric PM2.5 in Asthmatic Rats. *Ecotoxicol. Environ. Saf.* **2020**, *190*, 110094. [[CrossRef](#)]
41. Lippmann, M. Regional Deposition of Particles in the Human Respiratory Tract. In *Comprehensive Physiology*; John Wiley & Sons, Inc.: Hoboken, NJ, USA, 2011; pp. 213–232.
42. Hassanpour Matikolaie, S.A.H.; Jamshidi, H.; Samimi, A. Characterizing the Effect of Traffic Density on Ambient CO, NO<sub>2</sub>, and PM2.5 in Tehran, Iran: An Hourly Land-Use Regression Model. *Transp. Lett.* **2019**, *11*, 436–446. [[CrossRef](#)]
43. Nathan, C.; Cunningham-Bussell, A. Beyond Oxidative Stress: An Immunologist's Guide to Reactive Oxygen Species. *Nat. Rev. Immunol.* **2013**, *13*, 349–361. [[CrossRef](#)]
44. Petit, P.C.; Fine, D.H.; Vásquez, G.B.; Gamero, L.; Slaughter, M.S.; Dasse, K.A. The Pathophysiology of Nitrogen Dioxide during Inhaled Nitric Oxide Therapy. *ASAIO J.* **2017**, *63*, 7–13. [[CrossRef](#)] [[PubMed](#)]
45. Gaffin, J.M.; Hauptman, M.; Lai, P.; Petty, C.R.; Wolfson, J.M.; Kang, C.-M.; Sheehan, W.J.; Baxi, S.N.; Bartnikas, L.M.; Permaul, P.; et al. Nitrogen Dioxide Exposure in School Classrooms Is Associated with Airflow Obstruction in Students with Asthma. *J. Allergy Clin. Immunol.* **2017**, *139*, AB174. [[CrossRef](#)]
46. Sopian, N.A.; Jalaludin, J.; Tengku Mayusi, T.Z.A.; Latif, M.T. Increased Chromosomal Damage among Children in Proximity to Industrial Zone. *Aerosol Air Qual. Res.* **2020**, *20*, 944–955. [[CrossRef](#)]
47. Othman, M.; Latif, M.T. Pollution Characteristics, Sources, and Health Risk Assessments of Urban Road Dust in Kuala Lumpur City. *Environ. Sci. Pollut. Res.* **2020**, *27*, 11227–11245. [[CrossRef](#)]
48. Orellano, P.; Reynoso, J.; Quaranta, N. Short-Term Exposure to Sulphur Dioxide (SO<sub>2</sub>) and All-Cause and Respiratory Mortality: A Systematic Review and Meta-Analysis. *Environ. Int.* **2021**, *150*, 106434. [[CrossRef](#)]
49. Mohamad Fandi, N.F.; Jalaludin, J.; Latif, M.T.; Abd Hamid, H.H.; Awang, M.F. BTEX Exposure Assessment and Inhalation Health Risks to Traffic Policemen in The Klang Valley Region, Malaysia. *Aerosol Air Qual. Res.* **2020**, *20*, 1922–1937. [[CrossRef](#)]
50. Ahamad, F.; Latif, M.T.; Tang, R.; Juneng, L.; Dominick, D.; Juahir, H. Variation of Surface Ozone Exceedance around Klang Valley, Malaysia. *Atmos. Res.* **2014**, *139*, 116–127. [[CrossRef](#)]
51. Zhang, J.; Wei, Y.; Fang, Z. Ozone Pollution: A Major Health Hazard Worldwide. *Front. Immunol.* **2019**, *10*, 2518. [[CrossRef](#)]
52. Taylor-Clark, T.E.; Udem, B.J. Ozone Activates Airway Nerves via The Selective Stimulation of TRPA1 Ion Channels. *J. Physiol.* **2010**, *588*, 423–433. [[CrossRef](#)]
53. Awang, M.F.; Jalaludin, J.; Abu Bakar, S.; Latif, M.T.; Mohamad Fandi, N.F.; Abdul Hamid, H.H. Assessment of Micronucleus Frequency and Respiratory Health Symptoms among Traffic Policemen Exposed to BTEX and PM2.5 in Klang Valley, Malaysia. *J. Teknol.* **2020**, *82*, 73–82.
54. Schulze, F.; Gao, X.; Virzonis, D.; Damiati, S.; Schneider, M.R.; Kodzius, R. Air Quality Effects on Human Health and Approaches for Its Assessment through Microfluidic Chips. *Genes* **2017**, *8*, 244. [[CrossRef](#)]
55. Mohammadyan, M.; Alizadeh-Larimi, A.; Etemadinejad, S.; Latif, M.T.; Heibati, B.; Yetilmezsoy, K.; Abdul-Wahab, A. Particulate Air Pollution at Schools: Indoor-Outdoor Relationship and Determinants of Indoor Concentrations. *Aerosol Air Qual. Res.* **2017**, *17*, 857–864. [[CrossRef](#)]
56. Sofwan, N.M.; Latif, M.T. Characteristics of The Real-Driving Emissions from Gasoline Passenger Vehicles in the Kuala Lumpur Urban Environment. *Atmos. Pollut. Res.* **2021**, *2*, 306–315. [[CrossRef](#)]



57. Chong, H.S.; Park, Y.; Kwon, S.; Hong, Y. Analysis of Real Driving Gaseous Emissions from Light-Duty Diesel Vehicles. *Transp. Res. Part D Transp. Environ.* **2018**, *65*, 485–499. [[CrossRef](#)]
58. Rose, J.J.; Xu, Q.; Wang, L.; Gladwin, M.T. Shining a Light on Carbon Monoxide Poisoning. *Am. J. Respir. Crit. Care Med.* **2015**, *192*, 1145–1147. [[CrossRef](#)] [[PubMed](#)]
59. Van Vliet, E.D.S.; Kinney, P.L.; Owusu-Agyei, S.; Schluger, N.W.; Ae-Ngibise, K.A.; Whyatt, R.M.; Jack, D.W.; Agyei, O.; Chillrud, S.N.; Boamah, E.A.; et al. Current Respiratory Symptoms and Risk Factors in Pregnant Women Cooking with Biomass Fuels in Rural Ghana. *Environ. Int.* **2019**, *124*, 533–540. [[CrossRef](#)] [[PubMed](#)]
60. Rani, N.L.A.; Azid, A.; Khalit, S.I.; Juahir, H.; Samsudin, M.S. Air Pollution Index Trend Analysis in Malaysia, 2010–2015. *Pol. J. Environ. Stud.* **2018**, *27*, 801–808. [[CrossRef](#)]
61. Muhammad, N.S.; Jalaludin, J.; Sundrasegaran, S. Exposure to Respirable Dust (PM10) and Respiratory Health among Traffic Policemen in Selangor. *Adv. Environ. Biol.* **2014**, *8*, 199–206.
62. Abdul Rahman, S.; Hamzah, M.S.; Wood, A.K.; Elias, M.S.; Salim, N.A.A.; Sanuri, E. Sources Apportionment of Fine and Coarse Aerosol in Klang Valley, Kuala Lumpur using Positive Matrix Factorization. *Atmos. Pollut. Res.* **2011**, *2*, 197–206. [[CrossRef](#)]
63. Sulong, N.A.; Latif, M.T.; Sahani, M.; Khan, M.F.; Fadzil, M.F.; Tahir, N.M.; Mohamad, N.; Sakai, N.; Fujii, Y.; Othman, M.; et al. Distribution, Sources and Potential Health Risks of Polycyclic Aromatic Hydrocarbons (PAHs) in PM2.5 Collected During Different Monsoon Seasons and Haze Episode in Kuala Lumpur. *Chemosphere* **2019**, *219*, 1–14. [[CrossRef](#)]
64. Abrams, S.T.; Zhang, N.; Manson, J.; Liu, T.; Dart, C.; Baluwa, F.; Wang, S.S.; Brohi, K.; Kipar, A.; Yu, W.; et al. Circulating Histones are Mediators of Trauma-Associated Lung Injury. *Am. J. Respir. Crit. Care Med.* **2013**, *187*, 160–169. [[CrossRef](#)] [[PubMed](#)]
65. Alhamdi, Y.; Abrams, S.T.; Cheng, Z.; Jing, S.; Su, D.; Liu, Z.; Lane, S.; Welters, I.; Wang, G.; Toh, C.-H. Circulating Histones Are Major Mediators of Cardiac Injury in Patients With Sepsis. *Crit. Care Med.* **2015**, *43*, 2094–2103. [[CrossRef](#)] [[PubMed](#)]
66. Azeez, O.S.; Pradhan, B.; Shafri, H.Z.M. Vehicular CO Emission Prediction using Support Vector Regression Model and GIS. *Sustainability* **2018**, *10*, 3434. [[CrossRef](#)]
67. Both, A.F.; Westerdahl, D.; Fruin, S.; Haryanto, B.; Marshall, J.D. Exposure to Carbon Monoxide, Fine Particle Mass, and Ultrafine Particle Number in Jakarta, Indonesia: Effect of Commute Mode. *Sci. Total Environ.* **2013**, *443*, 965–972. [[CrossRef](#)] [[PubMed](#)]
68. Abdul Manan, M.M.; Várhelyi, A.; Çelik, A.K.; Hashim, H.H. Road Characteristics and Environment Factors Associated with Motorcycle Fatal Crashes in Malaysia. *IATSS Res.* **2018**, *42*, 207–220. [[CrossRef](#)]
69. Suhaimi, N.F.; Jalaludin, J.; Mohd Juhari, M.A. The Impact of Traffic-Related Air Pollution on Lung Function Status and Respiratory Symptoms among Children in Klang Valley, Malaysia. *Int. J. Environ. Health Res.* **2020**, 1–12. [[CrossRef](#)]
70. Gawda, A.; Majka, G.; Nowak, B.; Marcinkiewicz, J. Air Pollution, Oxidative Stress, and Exacerbation of Autoimmune Diseases. *Cent. Eur. J. Immunol.* **2017**, *42*, 305–312. [[CrossRef](#)]
71. Niu, Y.; Desmarais, T.L.; Tong, Z.; Yao, Y.; Costa, M. Oxidative Stress Alters Global Histone Modification and DNA Methylation. *Free Radic. Biol. Med.* **2015**, *82*, 22–28. [[CrossRef](#)]
72. Ji, H.; Biagini Myers, J.M.; Brandt, E.B.; Brokamp, C.; Ryan, P.H.; Khurana Hershey, G.K. Air Pollution, Epigenetics, and Asthma. *Allergy Asthma Clin. Immunol.* **2016**, *12*, 51. [[CrossRef](#)] [[PubMed](#)]
73. Jo, E.-J.; Song, W.-J. Environmental Triggers for Chronic Cough. *Asia Pac. Allergy* **2019**, *9*, e16. [[CrossRef](#)] [[PubMed](#)]
74. Peng, H.; Zong, D.; Zhou, Z.; Chen, P. Pulmonary Diseases and Epigenetics. In *Medical Epigenetics*; Elsevier Inc.: Amsterdam, The Netherlands, 2016; pp. 221–242. ISBN 9780128032404.
75. Jirtle, R.L.; Skinner, M.K. Environmental Epigenomics and Disease Susceptibility. *Nat. Rev. Genet.* **2007**, *8*, 253–262. [[CrossRef](#)] [[PubMed](#)]
76. Bhargava, A.; Bunkar, N.; Aglawe, A.; Pandey, K.C.; Tiwari, R.; Chaudhury, K.; Goryacheva, I.Y.; Mishra, P.K. Epigenetic Biomarkers for Risk Assessment of Particulate Matter Associated Lung Cancer. *Curr. Drug Targets* **2018**, *19*, 1127–1147. [[CrossRef](#)] [[PubMed](#)]
77. Kietzmann, T.; Petry, A.; Shvetsova, A.; Gerhold, J.M.; Görlach, A. The Epigenetic Landscape Related to Reactive Oxygen Species Formation in The Cardiovascular System. *Br. J. Pharmacol.* **2017**, *174*, 1533–1554. [[CrossRef](#)] [[PubMed](#)]
78. Vrijens, K.; Trippas, A.J.; Lefebvre, W.; Vanpoucke, C.; Penders, J.; Janssen, B.G.; Nawrot, T.S. Association of Prenatal Exposure to Ambient Air Pollution With Circulating Histone Levels in Maternal Cord Blood. *JAMA Netw. Open* **2020**, *3*, e205156. [[CrossRef](#)] [[PubMed](#)]
79. Zhang, Z.; Chen, L.; Xing, X.; Li, D.; Gao, C.; He, Z.; Li, J.; Zhu, X.; Xiao, X.; Wang, S.; et al. Specific Histone Modifications Were Associated with the PAH-Induced DNA Damage Response in Coke Oven Workers. *Toxicol. Res.* **2016**, *5*, 1193–1201. [[CrossRef](#)]