

# Impact of MEK Inhibitor Therapy on Neurocognitive Functioning in NF1

Karin S. Walsh, PsyD, Pamela L. Wolters, PhD, Brigitte C. Widemann, MD, Allison del Castillo, BA, Maegan D. Sady, PhD, Tess Inker, BA, Marie Claire Roderick, PsyD, Staci Martin, PhD, Mary Anne Toledo-Tamula, MA, Kari Struempf, PhD, Iris Paltin, PhD, Victoria Collier, RN, BSN, Kathy Mullin, BSN, Michael J. Fisher, MD, and Roger J. Packer, MD

**Correspondence**  
Dr. Walsh  
kwalsh@childrensnational.org

*Neurol Genet* 2021;7:e616. doi:10.1212/NXG.0000000000000616

## Abstract

### Background and Objectives

Neurofibromatosis type 1 (NF1)-associated cognitive impairments carry significant lifelong morbidity. The lack of targeted biologic treatments remains a significant unmet need. We examine changes in cognition in patients with NF1 in the first 48 weeks of mitogen-activated protein kinase inhibitor (MEKi) treatment.

### Methods

Fifty-nine patients with NF1 aged 5–27 years on an MEKi clinical trial treating plexiform neurofibroma underwent pretreatment and follow-up cognitive assessments over 48 weeks of treatment. Performance tasks (Cogstate) and observer-reported functioning (BRIEF) were the primary outcomes. Group-level (paired *t* tests) and individual-level analyses (Reliable Change Index, RCI) were used.

### Results

Analysis showed statistically significant improvements on BRIEF compared with baseline (24-week Behavioral Regulation Index:  $t_{(58)} = 3.03$ ,  $p = 0.004$ ,  $d = 0.24$ ; 48-week Metacognition Index:  $t_{(39)} = 2.70$ ,  $p = 0.01$ ,  $d = 0.27$ ). RCI indicated that more patients had clinically significant improvement at 48 weeks than expected by chance ( $\chi^2 = 11.95$ ,  $p = 0.001$ , odds ratio [OR] = 6.3). Group-level analyses indicated stable performance on Cogstate ( $p > 0.05$ ). RCI statistics showed high proportions of improved working memory (24-week  $\chi^2 = 8.36$ ,  $p = 0.004$ , OR = 4.6, and 48-week  $\chi^2 = 9.34$ ,  $p = 0.004$ , OR = 5.3) but not visual learning/memory. Patients with baseline impairments on BRIEF were more likely to show significant improvement than nonimpaired patients (24 weeks 46% vs 8%;  $\chi^2 = 9.54$ ,  $p = 0.008$ , OR = 9.22; 48 weeks 63% vs 16%;  $\chi^2 = 7.50$ ,  $p = 0.02$ , OR = 9.0).

### Discussion

Our data show no evidence of neurotoxicity in 48 weeks of treatment with an MEKi and a potential clinical signal supporting future research of MEKi as a cognitive intervention.

From the Children's National Medical Center (K.S.W., A.C., M.D.S., T.J., R.J.P.), Washington, DC; National Cancer Institute (P.L.W., B.C.W., M.C.R., S.M., K.S.), Bethesda, MD; Clinical Research Directorate (M.A.T.-T.), Frederick National Library for Cancer Research, MD; and Children's Hospital of Philadelphia (I.P., V.C., K.M., M.J.F.), Philadelphia.

Go to [Neurology.org/NG](https://www.neurology.org/NG) for full disclosures. Funding information is provided at the end of the article.

The Article Processing Charge was funded by the authors.

This is an open access article distributed under the terms of the Creative Commons Attribution-NonCommercial-NoDerivatives License 4.0 (CC BY-NC-ND), which permits downloading and sharing the work provided it is properly cited. The work cannot be changed in any way or used commercially without permission from the journal.

## Glossary

**ANOVA** = analysis of variance; **BRI** = Behavioral Regulation Index; **BRIEF** = Behavior Rating Inventory of Executive Function; **CI** = confidence interval; **MCI** = Metacognition Index; **MEKi** = mitogen-activated protein kinase inhibitor; **NF1** = neurofibromatosis type 1; **OCL** = one-card learning task; **ONB** = one-back task; **OR** = odds ratio; **PN** = plexiform neurofibroma; **RCI** = Reliable Change Index.

Cognitive deficits are prevalent in neurofibromatosis type 1 (NF1). Upward of 80% of individuals with NF1 experience neurocognitive dysfunction, resulting in significant lifetime morbidities.<sup>1-3</sup> The NF1 cognitive phenotype includes downward-shifted intellect, high prevalence of attention-deficit/hyperactivity disorder, executive dysfunction, and visuospatial deficits, mimicking learning defects in the NF-knockout mouse.<sup>4-7</sup>

Suggested mechanisms underlying cognitive deficits in NF1 include the lack of neurofibromin resulting in overactivity of Ras and hyperactivation of Ras/ERK pathway downstream signaling cascades, which are vital in long-term potentiation and cortical plasticity.<sup>8-12</sup> Trials manipulating the Ras/ERK pathway have ameliorated cognitive impairments in NF1 mouse models.<sup>13,14</sup> Human trials targeting this pathway appear promising.<sup>1,15</sup> The deregulation of the Ras/ERK cascade enhances GABA release, negatively affecting LTP through heightened inhibition in murine models.<sup>16,17</sup> Increased GABA release inhibits prefrontal cortical circuits necessary for working memory and has been demonstrated in murine and human models.<sup>14,18,19</sup>

The most severe neurocognitive dysfunction in individuals with Ras/MAPK pathway disorders appears to be associated with mutations affecting downstream transducers of RAS such as *MEK1* and *BRAF*.<sup>16,20</sup> Recent successful clinical trials of MEK and BRAF inhibitors in attenuating plexiform neurofibromas (PNs) and low-grade gliomas have generated interest in the effect mitogen-activated protein kinase inhibitor (MEKi) may have on cognition in NF1.<sup>21-25</sup> Two preclinical trials suggest an impact on cognitive functions with inhibition of MEK in NF1 mouse models.<sup>26,27</sup> This study primarily aims to examine changes in memory and executive functions in patients with NF1 on MEKi treatment for PN over the first year of therapy.

## Methods

### Standard Protocol Approvals, Registrations, and Patient Consents

This research was approved by the institutional ethics committee at all participating sites (Children's National Medical Center, Children's Hospital of Philadelphia, and National Cancer Institute). Written informed consent was obtained from all guardians of child participants and adult participants in the study.

This was a single-arm, multicenter ancillary cognitive study evaluating changes in cognitive functions in the first year of

treatment on a MEKi. Eligible participants were (1) diagnosed with NF1 per NIH criteria or through germline NF1 mutation in a CLIA certified laboratory, (2) enrolled on a clinical trial of an MEKi for the treatment of a PN (including NCT03962543, NCT02096471, NCT02407405, and NCT02124772), (3) between the ages of 4 and 35 years, (4) without significant sensory or motor impairment, and (5) primarily English or Spanish dominant.<sup>28</sup> This study was approved by the institutional review board of the principal investigator's institution and at each participating institution, and all participants consented.

Participants underwent a pretreatment neurocognitive evaluation. Three additional evaluations were completed over the first year on therapy: at 12 weeks ( $\pm 4$  weeks), 24 weeks ( $\pm 4$  weeks), and 48 weeks ( $\pm 8$  weeks). The 48-week assessment was added to the protocol after study initiation resulting in some patients not having 48-week data. Participants taken off treatment early (e.g., for toxicity or a lack of response) completed the cognitive assessment at the final study visit, while still taking the study drug. At each time point, participants completed the cognitive assessment (Cogstate) and a consistent parent completed a questionnaire of executive functioning (Behavior Rating Inventory of Executive Function; BRIEF). Participants  $\geq 18$  completed the self-report BRIEF if an adult caregiver was not present. If a participant turned 18 during the course of the study, the parent report was maintained for consistency across the trial.

All data were managed by the coordinating center (Children's National Medical Center). Individual participants' data were monitored in real time by the principal investigator (K.S.W.), and findings were conveyed to sites if scores were  $\geq 1.5$  SD below the mean or if there was a significant decrease in more than 2 measures over time, allowing for additional monitoring or evaluation for neurotoxicity as needed.

### Study Measures

Specific outcome measures were selected to (1) assess cognitive functions relevant to the primary study aims, which are known deficits in NF1, (2) increase feasibility by minimizing time and resource burden for institutions and participants, and (3) allow for repeated measures in shorter intervals than what is possible with traditional neuropsychological tests. We were able to study a large, diverse sample using a focused computerized assessment battery (Cogstate) targeting neurocognitive processes most sensitive to change and predicted to be affected by MEKi (i.e., learning/memory, working memory, attention, and processing speed). We also used a complimentary rating scale (BRIEF) to evaluate real-world

executive functioning. The entire assessment was completed in  $\leq 30$  minutes. See supplement for full test descriptions ([links.lww.com/NXG/A445](https://links.lww.com/NXG/A445)).

## Statistical Design

Changes in performance and ratings over time were evaluated by group-level analysis and individually based reliable change analyses. With both, we quantified whether outcomes changed over time in the sample as a whole. We also investigated whether changes in performance differed by age (dichotomized at a median of 12 years) and baseline performance (dichotomized as nonimpaired or impaired, using 1.5 SD below average). The age cutoff used the median split of our sample and was considered an appropriate division considering developmental changes around this age that are relevant to the study outcomes.

First, we analyzed group-level changes with repeated-measures analysis of variance (ANOVA). We analyzed 2 follow-up time points separately to maximize the available sample at each time point. We calculated effect sizes between mean scores at each pair of visits to estimate the mean amount of change that occurred between time points.

Second, we analyzed change in outcomes over time on an individual participant level, using a Reliable Change Index (RCI) methodology, which generates a confidence interval (CI) that identifies the expected range of change scores in the normative population, using a test's SD and test-retest reliability (see eMethods, [links.lww.com/NXG/A445](https://links.lww.com/NXG/A445)). Once the CI cutoff is established, the cutoff and an individual's change score ( $T_2 - T_1$ ) can be compared to determine whether a clinically significant change has occurred. Thus, RCI analysis allows investigation of whether a clinically significant, rather than a simply statistically significant, change has occurred, and in which individuals. Cogstate provides the within-subject SD to calculate RCI, and we calculated metrics for the BRIEF using normative data in the modified practice-adjusted RCI formula outlined in Chelune.<sup>29</sup>

For each outcome, 2-tailed 90% CIs were constructed. In a normative sample, a 90% CI identifies 5% as decreased, 90% as stable, and 5% as improved. We chose 2-tailed because at this stage of research with MEKi, it is equally important to identify either detrimental (possibly neurotoxic) or positive effects on functioning. Individual change scores were calculated between the pretreatment and the 24-week and 48-week evaluations and classified as "declined," "stable," or "improved" on each outcome for each follow-up time point using RCI methodology.

We then used 2 (group: normative/expected, NF)  $\times$  3 (change status: declined, stable, and improved)  $\chi^2$  to compare the frequencies of classification between the normative/expected (5/90/5%) and NF groups.<sup>30</sup> This statistical approach answers the following question: Does memory or executive functioning decrease or improve in a greater proportion of individuals who are taking an MEKi, compared

with the proportion expected in the general population who are tested twice? We hypothesized that a greater proportion of individuals receiving an MEKi would change in performance compared with normative expectations.

Third, to assess the influence of age and baseline performance level on RCI-based classification, we used a set of 2 (age:  $\leq 12$  years,  $> 12$  years; baseline performance level: nonimpaired, impaired)  $\times$  3 (change status)  $\chi^2$  tests. This allowed us to test whether older or younger children were more likely to change and whether those with impaired scores at baseline were more likely to change than those with nonimpaired baseline performance.

## Data Availability

Data not provided in the article will be shared at the request of other investigators for the purpose of replication.

## Results

Seventy-four patients aged 5–27 years enrolled on the study. One patient was ineligible for the treatment study, 1 declined participation, 1 did not complete the measures at pretreatment, 5 discontinued treatment before the 24-week time point, and 7 discontinued treatment by the 48-week time point. Twelve patients were outside the 48-week test window as this assessment was amended to the protocol. The remaining 59 patients completed all scheduled assessments, 40 with 48-week data. The median age of participants was 12 years (5–27), 64% were male, and 68% were Caucasian. All participants were English speaking despite Spanish-speaking individuals being eligible for the study. The majority of participants on this study were treated with selumetinib, with the remainder treated with mirdametinib or trametinib (Table 1).

## Patient/Observer-Reported Outcomes (BRIEF)

Descriptive statistics of the 52 BRIEF parent and 7 adult self-reports are provided in Table 2. ANOVAs indicated small but significant improvements in BRIEF scores from pretreatment to 24-week follow-up (Metacognition Index [MCI]:  $F_{(1,58)} = 5.79$ ,  $p = 0.02$ ,  $d = 0.18$ ; Behavioral Regulation Index [BRI]:  $F_{(1,59)} = 9.19$ ,  $p = 0.004$ ,  $d = 0.24$ ) and 48-week follow-up (MCI:  $F_{(1,39)} = 7.29$ ,  $p = 0.01$ ,  $d = 0.27$ ; BRI:  $F_{(1,39)} = 5.63$ ,  $p = 0.02$ ,  $d = 0.26$ ). RCI analyses indicated that the distribution found in those treated with an MEKi was not significantly different at the 24-week assessment (MCI: 5/80/15% for declined/stable/improved, respectively;  $\chi^2 = 4.89$ ,  $p = 0.09$ , odds ratio [OR] = 3.4; BRI: 2/85/13%;  $\chi^2 = 4.42$ ,  $p = 0.11$ , OR = 2.9) than the expected distributions of RCI classifications in the normative population (5/90/5%). The proportions for MCI but not BRI were significantly different at 48 weeks (MCI: 5/70/25%;  $\chi^2 = 12.02$ ,  $p = 0.002$ , OR = 6.3; Figure 1), such that the proportion classified as improved was larger than expected (BRI: 3/83/15%;  $\chi^2 = 4.24$ ,  $p = 0.12$ , OR = 3.4; Figure 2).

When examining RCI-based changes in executive function ratings over time in the subsample that completed all assessments

**Table 1** Patient and Treatment Characteristics

Age, y	
Mean (SD)	12.66 (5.74)
Median	12
Range	5–27
Sex (males), n (%)	
	38 (64)
Race/ethnicity, n (%)	
Caucasian	40 (68)
African American	6 (10)
Asian	3 (5)
Multiple	5 (8)
Hispanic	3 (5)
Other	2 (3)
Drug, n (%)	
Selumetinib (NCT02407405)	54 (92)
Mirdametinib (NCT03962543 and NCT02096471)	4 (7)
Trametinib (NCT02124772)	1 (1)

(n = 40), overall decreases in executive function ratings were seen in only 5% of the sample on the MCI and 2.5% on the BRI by 48 weeks. The majority of the sample showed no net changes: 70% on MCI and 88% on BRI (either decreased/improved at 24 weeks but then returned to baseline, or never changed). Of the 25% who showed 48-week improvement on MCI, half had improved by 24 weeks and then were stable, and the other half were stable at 24 weeks but improved at 48 weeks. Of the 15% who showed overall improvement on BRI, 5/6 improved at 24 weeks and were then stable, whereas 1 participant was stable at 24 weeks and then improved at the final follow-up. Many of the participants who were stable at 24 weeks had enrolled in the study before the addition of the 48-week assessment (MCI n = 17; BRI n = 15), as were some who had

improved at 24 weeks (MCI n = 2; BRI n = 5), limiting the ability to assess long-term improvement in these individuals.

### Primary Performance Outcomes (Cogstate)

Analysis of changes in Cogstate working memory (one-back task [ONB] speed) and visual learning/memory (one-card learning task [OCL]) did not reveal a significant change in performance from pretreatment to 24- or 48-week follow-up (ONB speed:  $F_{(1,56)} = 0.50$ ,  $p = 0.48$ ,  $d = 0.08$ ;  $F_{(1,38)} = 0.34$ ,  $p = 0.57$ ,  $d = -0.06$ , respectively; OCL:  $F_{(1,55)} = -0.46$ ,  $p = 0.653$ ,  $d = 0.07$ ;  $F_{(1,38)} = 0.00$ ,  $p = 0.96$ ,  $d = 0.01$ , respectively). However, the distributions of RCI classifications for ONB speed were significantly different from those of the normative population (5/90/5%) at the 24-week assessment (14/66/20%;  $\chi^2 = 13.74$ ,  $p = 0.001$ , OR = 4.6) and the 48-week assessment (12/66/22%;  $\chi^2 = 12.58$ ,  $p = 0.002$ , OR = 5.3). The distributions of RCI classifications for OCL were not significantly different at either the 24-week assessment (6/87/7%;  $\chi^2 = 0.36$ ,  $p = 0.84$ , OR = 1.5) or the 48-week assessment (0/98/2%;  $\chi^2 = 2.68$ ,  $p = 0.26$ , OR = 0.5; Figures 3 and 4).

When examining RCI-based changes in performance over time in the subsample that completed all assessments, overall decreases were rare (12% of the sample on ONB and 0% on OCL). The majority of the sample showed no net changes: 66% on ONB and 97% on OCL. Of the 9 participants who showed improvement on ONB by 48 weeks, 1/3 (n = 3) had improved by 24 weeks and then were stable; the remaining 2/3 (n = 6) did not improve until 48 weeks. As with the executive functioning ratings, many of those who had stable or improved performance at 24 weeks did not have 48-week data (n = 8 who were stable, 5 who had improved on ONB; n = 13 stable and 1 improved on OCL), limiting the possibility of assessing long-term gains in these participants.

### Predictors of RCI Classifications

#### Age

To determine whether the age of the participant related to the outcome, we compared children  $\leq 12$  years (younger cohort, n = 34) with those  $\geq 13$  (n = 25). There were no differences in the proportion of participants whose scores decreased, did not

**Table 2** Mean Cognitive Scores From Pretreatment to 48-Week Follow-up

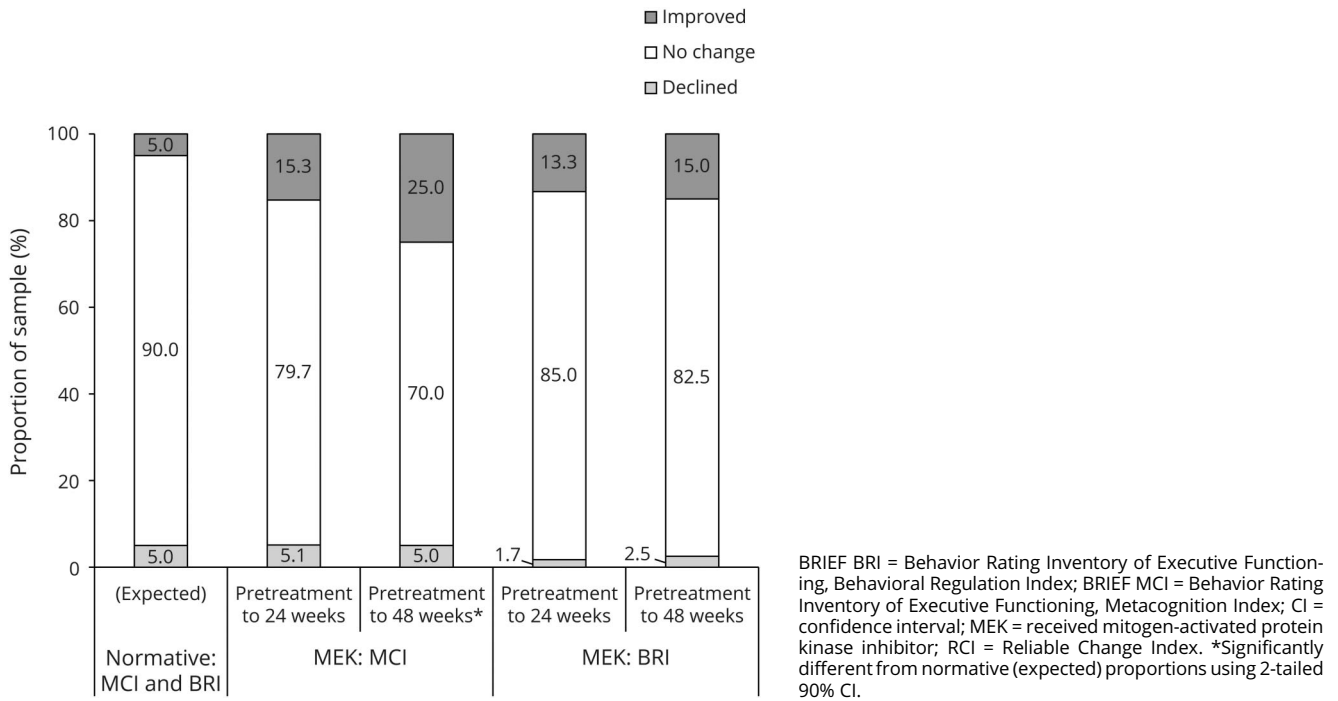
	Pretreatment			24-wk		48-wk	
	Mean (SD)	Median (min-max)	N (%) with impaired scores <sup>a</sup>	Mean (SD)	Median (min-max)	Mean (SD)	Median (min-max)
<b>BRIEF MCI (t score)</b>	54.93 (10.95)	55.0 (36 to 84)	11 (19)	52.95 (11.07)	53.0 (34 to 82)	51.7 (10.6)	51.5 (31 to 71)
<b>BRIEF BRI (t score)</b>	51.59 (10.31)	51.0 (35 to 79)	6 (10)	49.1 (9.66)	48.0 (35 to 81)	48.73 (9.36)	46.5 (35 to 68)
<b>Cogstate ONB speed (z-score)</b>	-0.24 (1.42)	-0.1 (-3.7 to 2.82)	9 (15)	-0.18 (1.33)	0.1 (-4.4 to 2.89)	-0.35 (1.11)	-0.3 (-3.11 to 2.89)
<b>Cogstate OCL accuracy (z-score)</b>	-0.22 (1.37)	-0.4 (-2.67 to 3.0)	8 (14)	-0.14 (1.57)	0.0 (-5.78 to 3.78)	-0.04 (1.49)	-0.2 (-3.3 to 3.0)

Abbreviations: BRIEF BRI = Behavior Rating Inventory of Executive Functioning, Behavioral Regulation Index; BRIEF MCI = Behavior Rating Inventory of Executive Functioning, Metacognition Index; OCL = one-card learning task; ONB = one-back task.

BRIEF N = 59 (N = 40 for 12 months); Cogstate N = 57 (N = 39 for 12 months); some individual sample sizes vary.

<sup>a</sup> Impaired scores were defined as  $\geq 1.5$  SDs below the mean.

**Figure 1** RCI-Based Outcomes on Observer-Rated Executive Functions Following 24 and 48 Weeks of Treatment

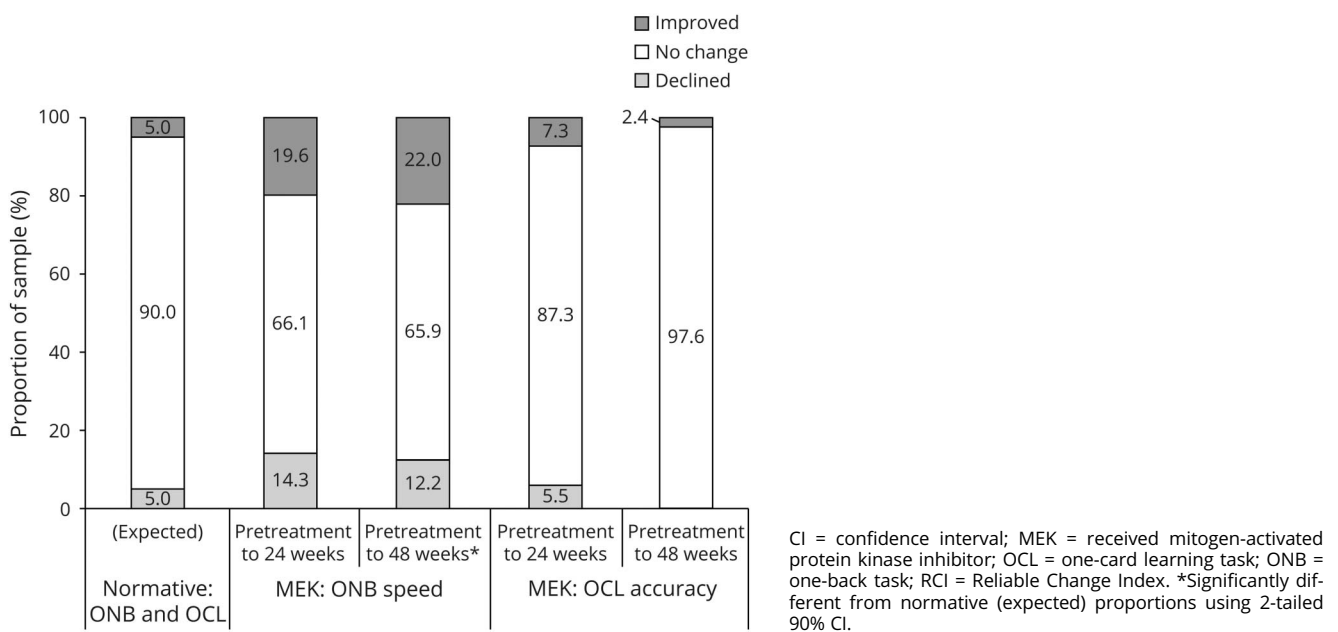


change, or improved on BRIEF or Cogstate ONB at either 24- or 48-week follow-ups (all  $p > 0.05$ ). On Cogstate OCL, younger children were more likely to improve at 24 weeks ( $\chi^2 = 7.05, p = 0.03$ ), but there were no longer any differences by age at 48 weeks ( $\chi^2 = 0.71, p = 0.40$ ).

### Baseline Level of Functioning

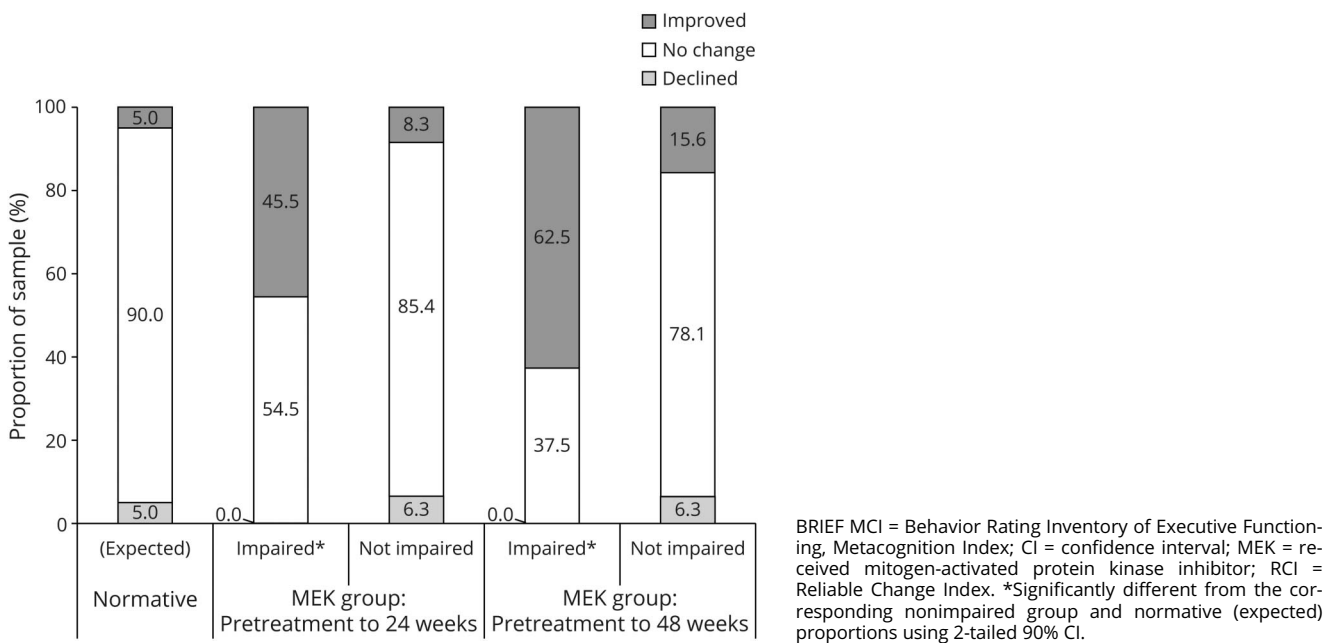
The contribution of pretreatment functioning to outcomes was examined. In the normative BRIEF sample, there were no associations of time 1 rating level and change in the score at time 2 ( $p > 0.05$ ). Within the treatment sample, we found that

**Figure 2** RCI-Based Outcomes on Performance-Based Learning and Working Memory Following 24 and 48 Weeks of Treatment





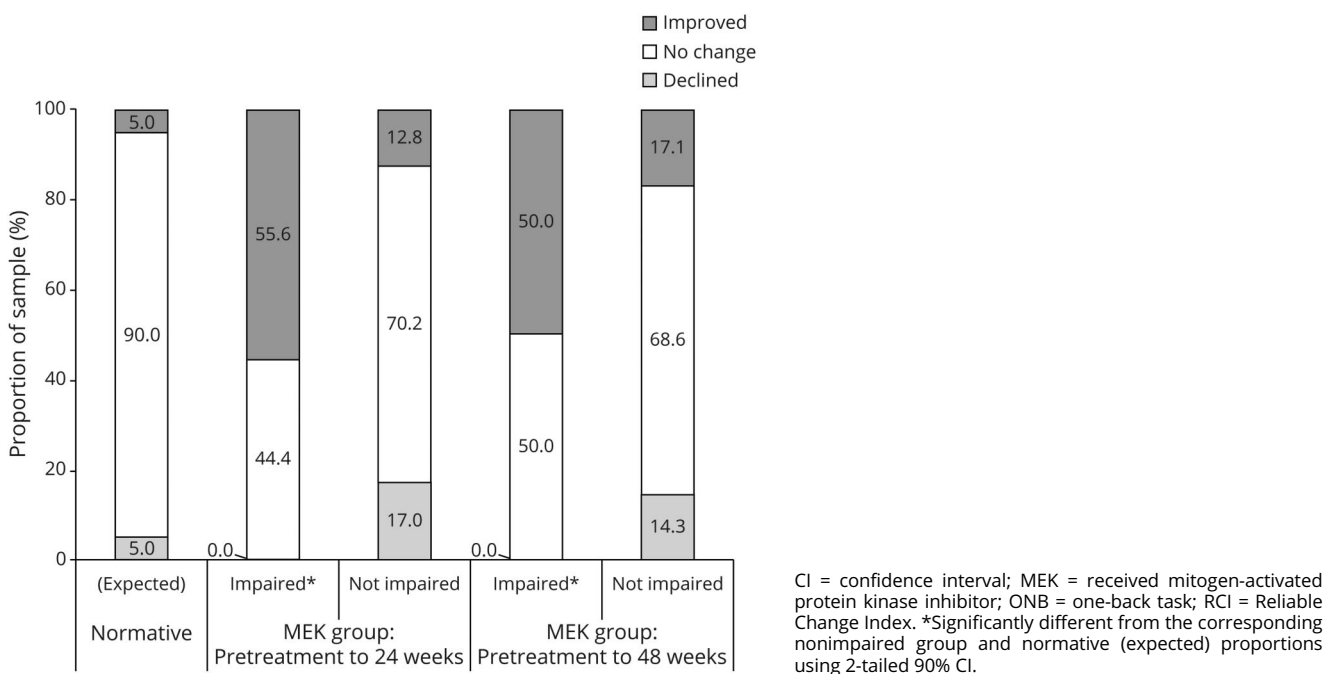
**Figure 3** RCI-Based Change in Observer-Rated Executive Function Outcomes on the BRIEF MCI Associated With Baseline Performance Levels



participants with baseline MCI ratings in the impaired range ( $\leq 1.5$  SDs below the mean, which was seen in  $n = 11$ ; 19%) were more likely to show significant improvement over the course of treatment. At 24 weeks, 50% of the impaired pretreatment group showed significant improvement, compared with only 9% of the

nonimpaired group ( $\chi^2 = 10.36$ ,  $p = 0.006$ , OR = 10.25). Similarly, at the 48-week follow-up, participants with impaired scores at pretreatment were significantly more likely to show meaningful improvement on MCI (71%) than those whose initial scores were not impaired (16%;  $\chi^2 = 9.45$ ,  $p = 0.009$ , OR = 13.5).

**Figure 4** Performance-Based Working Memory Outcomes (ONB Speed) Associated With Baseline Performance Levels



A similar pattern was seen between those impaired vs not impaired at pretreatment on BRI; however, the comparisons were not statistically significant. At 24 weeks, 33% of those with impaired pretreatment scores improved compared with 9% of those with nonimpaired pretreatment ratings ( $\chi^2 = 3.01$ ,  $p = 0.22$ , OR = 4.8). At 48 weeks, 25% of those with impaired pretreatment scores improved compared with 14% of those with nonimpaired pretreatment ratings ( $\chi^2 = 0.44$ ,  $p = 0.80$ , OR = 2.1).

Using the same cutoff criteria of 1.5 SD below the mean, statistical significance was reached on one of the Cogstate tasks from pretreatment to follow-up. At 24 weeks, significant improvement on ONB speed was demonstrated in 56% of those with impaired performance at pretreatment and only 13% of those with nonimpaired pretreatment performance ( $\chi^2 = 9.33$ ,  $p = 0.009$ , OR = 8.5). At 48 weeks, differences were not significant, although the pattern was similar: 50% of those performing in the impaired range at pretreatment improved, whereas only 17% of the participants with nonimpaired pretreatment performance showed improvement ( $\chi^2 = 3.64$ ,  $p = 0.16$ , OR = 4.8).

Neither analysis on Cogstate OCL (accuracy) was statistically significant. At both 24 and 48 weeks, the only participants who improved were those with nonimpaired pretreatment performance, so  $\chi^2$  could not be computed because of multiple empty cells.

## Discussion

The recent MEKi trials have provided a key opportunity to enhance our understanding of possible mechanisms of action in NF1-associated cognitive impairment as well as to accelerate our progress toward finding effective therapeutics with the potential for improving these neurocognitive deficits in patients. Our innovative methodology of developing an ancillary cognitive study that could be conducted across multiple ongoing MEKi clinical trials allowed us to assess a key question in NF1 research and maximize enrollment without having to design and recruit to a separate clinical trial. The methodology that we applied showed excellent feasibility in a multicenter trial, supporting the use of these or similar methods in future cognitive trials in NF. Given the mixed results of the NF1 murine model research regarding MEK inhibition and cognition/development, the most important finding of this study is the lack of evidence of neurotoxicity within the first 48 weeks of therapy in individuals with NF1 aged 5 years and older.<sup>26,27</sup> Performance scores of visual learning remained stable for the majority of participants. Similarly, performance on a working memory task and symptom ratings of both metacognitive and behavioral regulation aspects of executive function showed stability or improvement over the course of their treatment trial. We could not evaluate for potential neurotoxicity in children under the age of 5 years, and this will be an important next step in this research given the greater

susceptibility associated with rapid brain development and plasticity in this early period.<sup>31</sup>

Group-level analyses of change indicated small but significant improvement in parent/patient-reported executive functioning but not cognitive performance. Using an RCI framework, however, our statistical approaches allowed for an in-depth and clinically meaningful assessment of individual outcomes.

Based on parent/patient-reported symptom ratings of everyday executive functions, results suggest clinical improvement of metacognitive and behavioral regulation functions observable by 48 weeks or sooner in a larger proportion of participants receiving treatment. The age of the participant did not appear to affect these outcomes; however, pretreatment rating of executive dysfunction did relate to greater improvements in metacognitive and behavioral regulation functions than in participants rated as unimpaired before treatment. This finding was most prominent for metacognitive functions with significant improvements reported by the 24-week follow-up with additional improvements rated at the 48-week assessment.

On performance-based measures, a significant proportion of the treatment sample showed clinical improvement on a working memory task over the first 24 to 48 weeks on therapy, and again, there was no relationship with age, but those with greater pretreatment impairment had greater improvements at 24 weeks than in participants with nonimpaired performance before treatment. In contrast, there were no notable improvements in visual learning/memory.

Results of parent/patient-reported outcome measures were more robust than findings on performance-based measures. It is common for these assessment approaches to produce unique information about patient functions that are complementary.<sup>32,33</sup> Some inherent bias might exist in parent and patient reports of functioning with some expectation of improvement given the excellent tumor response observed in these trials.<sup>21</sup> However, tumor response was commonly documented at least several months before the improvement in cognitive performance and ratings. Furthermore, the cognitive study was presented with nondirectional hypotheses, which should minimize the issue of such bias. In addition, each respondent completed new questionnaires at each assessment blind to their previous ratings, which would also minimize the influence of prior rating and allow for relatively independent rating of functioning at each assessment time point.

It is also possible that the parent/patient report captured a broader improvement in functioning related to decreased pain and increased mobility or other functions directly related to changes in the PN. The patients on trial NCT02407405 were enrolled based on the severity of their PN and associated pain, disfigurement, and functional limitations. In addition to tumor response, the patients in that study showed clinically meaningful improvement in pain intensity, pain interference,

and overall quality of life.<sup>21</sup> Therefore, these improvements may have resulted in more engagement in school, social, and other settings that were essentially captured by the BRIEF. However, as many of the cases in the NCT02407405 trial showed improvement in pain and quality of life earlier in the course of treatment (within the first 12 weeks), we may be discovering unique cognitive improvements as well. Although parent/patient report of improvement was often first seen at 24 weeks, many of the performance-based cognitive improvements (when present) were not evident until 48 weeks.<sup>21</sup> This suggests a true association between treatment with an MEKi and improved cognitive functions that do not emerge until closer to a year on therapy.

The focused computerized Cogstate battery was chosen in this study because of the relevance of the outcome measures to the primary aims of the study and to address long-standing issues with feasibility for NF cognitive trials including time and the ability to repeat the test battery in shorter time intervals than traditional cognitive tests. Although a broader cognitive test battery could have captured unique data and potentially additional significant findings, we remained focused on data to answer our specific primary and secondary aims rather than an exploratory approach to the study. In addition, traditional neuropsychological tests are not repeatable within a 12-month period, which would have excluded our ability to examine any changes before 1 year on treatment. Based on prior experience in NF clinical trials, the latter approach would have significantly diminished feasibility and resulted in incomplete data and less power to analyze our hypotheses, and we would have missed information about changes that appear to be evident starting at 6 months on therapy.

This study was an ancillary to several single-arm, open-label clinical trials, which limits our ability to compare and contrast these findings to a comparison group (treated or untreated), which is an obvious limitation to this research. The use of RCI partially accounts for this, as it uses data from normative test-retest samples as comparison. Future plans include analyzing the relationship between cognitive, pain, and mobility outcomes to determine whether these factors are related to reported improvement in executive function or whether symptom reports of everyday executive functions are more sensitive measures of cognitive change in the context of treatment with an MEKi. Our data cannot speak to the impact that treatment beyond 1 year may have on cognition or the durability of these findings. However, a randomized trial of selumetinib vs carboplatin/vincristine in patients with NF1 and low-grade glioma has recently been initiated (NCT03871257), which will address the limitations related to the lack of a comparison group, durability, and a general enhancement of our interpretation of these initial findings.

In conclusion, cognitive impairments and learning disabilities in NF1 are a significant lifelong morbidity, and the lack of effective treatments continues to pose a significant unmet need. This study provides a first investigation into potential

mechanisms of action related to cognitive dysfunction in NF1 involving the Ras/MAPK pathway and provides important initial findings regarding the effects of MEKi's on cognitive function. First, the results of this study do not indicate any significant cognitive deterioration in functioning over the first 48 weeks of treatment with an MEKi that might suggest drug neurotoxicity. Our data show evidence of real-world functional and clinical improvement in executive functioning and improvement on a working memory task that emerges by around 24 weeks on an MEKi and with continued improvement up to 48 weeks of treatment, particularly for patients with baseline cognitive dysfunction, as would be expected. There is enough preliminary support of possible benefit of MEKi's on cognitive functioning in NF1 that future research in this area should be a focus for the NF1 community.

## Study Funding

This research was supported by the Children's Tumor Foundation, the Jennifer and Daniel Gilbert Neurofibromatosis Institute, and, in part, by the Intramural Research Program of the Center for Cancer Research, NCI, NIH, Bethesda, MD. This project has been funded in whole or in part with federal funds from the National Cancer Institute, NIH, under Contract No. 75N91019D00024, Task Order No. 75N91019F00129. The content of this publication does not necessarily reflect the views or policies of the Department of Health and Human Services, nor does mention of trade names, commercial products, or organizations imply endorsement by the US Government. None of the funding sources had any role in the writing of the manuscript or the decision to submit.

## Disclosure

The authors report no disclosures relevant to the manuscript. Go to [Neurology.org/NG](http://Neurology.org/NG) for full disclosures.

## Publication History

Received by *Neurology: Genetics* February 17, 2021. Accepted in final form July 6, 2021.

## Appendix Authors

Name	Location	Contribution
<b>Karin S. Walsh, PsyD</b>	Children's National Hospital, Washington, DC; George Washington University School of Medicine, DC	Contributed to the overall study design, literature search, data collection, data analysis, data interpretation, creation of figures, and writing
<b>Pamela L. Wolters, PhD</b>	National Cancer Institute/NIH Bethesda, MD	Contributed to the study design, data collection, data interpretation, and writing
<b>Brigitte C. Widemann, MD</b>	National Cancer Institute/NIH, Bethesda, MD	Contributed to the study design, data collection, data interpretation, and review of the manuscript



## Appendix (continued)

Name	Location	Contribution
<b>Allison del Castillo, BA</b>	Children's National Hospital, Washington, DC	Contributed to the study design, literature search, data collection, data analysis, data interpretation, and writing
<b>Maegan D. Sady, PhD</b>	Children's National Hospital, Washington, DC; George Washington University School of Medicine, DC	Contributed to data analysis, data interpretation, creation of figures, and writing
<b>Tess Inker, BA</b>	Children's National Hospital, Washington, DC	Contributed to the literature search, data collection, and review of the manuscript
<b>Marie Claire Roderick, PsyD</b>	National Cancer Institute/NIH, Bethesda, MD	Contributed to data collection and review of the manuscript
<b>Staci Martin, PhD</b>	National Cancer Institute/NIH, Bethesda, MD	Contributed to data collection, data interpretation, and review of the manuscript
<b>Mary Anne Toledo-Tamula, MA</b>	Clinical Research Directorate, Frederick National Laboratory for Cancer Research, MD	Contributed to data collection and review of the manuscript
<b>Kari Struempff, PhD</b>	National Cancer Institute/NIH, Bethesda, MD	Contributed to data collection and review of the manuscript
<b>Iris Paltin, PhD</b>	Children's Hospital of Philadelphia, PA; University of Pennsylvania Perelman School of Medicine, Philadelphia	Contributed to data collection and review of the manuscript
<b>Victoria Collier, RN, BSN</b>	Children's Hospital of Philadelphia, PA	Contributed to data collection and review of the manuscript
<b>Kathy Mullin, BSN</b>	Children's Hospital of Philadelphia, PA	Contributed to data collection and review of the manuscript
<b>Michael J. Fisher, MD</b>	Children's Hospital of Philadelphia, PA; University of Pennsylvania Perelman School of Medicine, Philadelphia	Contributed to data collection and review of the manuscript
<b>Roger J. Packer, MD</b>	Children's National Hospital, Washington, DC; George Washington University School of Medicine, DC	Contributed to data collection and review of the manuscript

## References

- Krab LC, de Goede-Bolder A, Aarsen FK, et al. Effect of simvastatin on cognitive functioning in children with neurofibromatosis type 1: a randomized controlled trial. *JAMA*. 2008;300(3):287-294.
- Krab LC, Oostenbrink R, de Goede-Bolder A, Aarsen FK, Elgersma Y, Moll HA. Health-related quality of life in children with neurofibromatosis type 1: contribution of demographic factors, disease-related factors, and behavior. *J Pediatr*. 2009;154(3):420-425, 425.e1.
- Martin S, Wolters P, Baldwin A, et al. Social-emotional functioning of children and adolescents with neurofibromatosis type 1 and plexiform neurofibromas: relationships with cognitive, disease, and environmental variables. *J Pediatr Psychol*. 2012;37(7):713-724.
- Moore BD III, Ater JL, Needle MN, Slopis J, Copeland DR. Neuropsychological profile of children with neurofibromatosis, brain tumor, or both. *J Child Neurol*. 1994;9(4):368-377.
- Payne JM, Hyman SL, Shores EA, North KN. Assessment of executive function and attention in children with neurofibromatosis type 1: relationships between cognitive measures and real-world behavior. *Child Neuropsychol*. 2011;17(4):313-329.
- Hyman SL, Shores EA, North KN. Learning disabilities in children with neurofibromatosis type 1: subtypes, cognitive profile, and attention-deficit-hyperactivity disorder. *Dev Med Child Neurol*. 2006;48(12):973-977.
- Silva AJ, Frankland PW, Marowitz Z, et al. A mouse model for the learning and memory deficits associated with neurofibromatosis type I. *Nat Genet*. 1997;15(3):281-284.
- Sweatt JD, Weeber EJ, Lombroso PJ. Genetics of childhood disorders: LI. Learning and memory, part 4: human cognitive disorders and the ras/ERK/CREB pathway. *J Am Acad Child Adolesc Psychiatry*. 2003;42(6):741-744.
- Sweatt JD, Weeber EJ. Genetics of childhood disorders: LII. Learning and memory, part 5: human cognitive disorders and the ras/ERK/CREB pathway. *J Am Acad Child Adolesc Psychiatry*. 2003;42(7):873-876.
- Sweatt JD. Mitogen-activated protein kinases in synaptic plasticity and memory. *Curr Opin Neurobiol*. 2004;14(3):311-317.
- Thomas GM, Huganir RL. MAPK cascade signalling and synaptic plasticity. *Nat Rev Neurosci*. 2004;5(3):173-183.
- Leon WC, Bruno MA, Allard S, Nader K, Cuello AC. Engagement of the PFC in consolidation and recall of recent spatial memory. *Learn Mem*. 2010;17(6):297-305.
- Costa RM, Silva AJ. Molecular and cellular mechanisms underlying the cognitive deficits associated with neurofibromatosis 1. *J Child Neurol*. 2002;17(8):622-626.
- Shilyansky C, Lee YS, Silva AJ. Molecular and cellular mechanisms of learning disabilities: a focus on NF1. *Annu Rev Neurosci*. 2010;33:221-243.
- Acosta MT, Kardel PG, Walsh KS, Rosenbaum KN, Gioia GA, Packer RJ. Lovastatin as treatment for neurocognitive deficits in neurofibromatosis type 1: phase I study. *Pediatr Neurol*. 2011;45(4):241-245.
- Cui Y, Costa RM, Murphy GG, et al. Neurofibromin regulation of ERK signaling modulates GABA release and learning. *Cell*. 2008;135(3):549-560.
- Lee YS, Silva AJ. The molecular and cellular biology of enhanced cognition. *Nat Rev Neurosci*. 2009;10(2):126-140.
- Shilyansky C, Karlsgodt KH, Cummings DM, et al. Neurofibromin regulates corticostriatal inhibitory networks during working memory performance. *Proc Natl Acad Sci USA*. 2010;107(29):13141-13146.
- Gutmann DH, Parada LF, Silva AJ, Ratner N. Neurofibromatosis type 1: modeling CNS dysfunction. *J Neurosci*. 2012;32(41):14087-14093.
- Schubbert S, Zenker M, Rowe SL, et al. Germline KRAS mutations cause Noonan syndrome. *Nat Genet*. 2006;38(3):331-336.
- Gross AM, Wolters PL, Dombi E, et al. Selumetinib in children with inoperable plexiform neurofibromas. *N Engl J Med*. 2020;382(15):1430-1442. doi:10.1056/NEJMoa1912735.
- Fangusaro J, Onar-Thomas A, Young Poussaint T, et al. Selumetinib in paediatric patients with BRAF-aberrant or neurofibromatosis type 1-associated recurrent, refractory, or progressive low-grade glioma: a multicenter, phase 2 trial. *Lancet Oncol*. 2019;20(7):1011-1022.
- Kondyli M, Larouche V, Saint-Martin C, et al. Trametinib for progressive pediatric low-grade gliomas. *J Neurooncol*. 2018;140(2):435-444. doi:10.1007/s11060-018-2971-9.
- Banerjee A, Jakacki RI, Onar-Thomas A, et al. A phase I trial of the MEK inhibitor selumetinib (AZD6244) in pediatric patients with recurrent or refractory low-grade glioma: a Pediatric Brain Tumor Consortium (PBTC) study. *Neuro Oncol*. 2017;19(8):1135-1144. doi:10.1093/neuonc/now282.
- Dombi E, Baldwin A, Marcus LJ, et al. Activity of selumetinib in neurofibromatosis type 1-related plexiform neurofibromas. *N Engl J Med*. 2016;375(26):2550-2560.
- Wang Y, Kim E, Wang X, et al. ERK inhibition rescues defects in fate specification of Nf1-deficient neural progenitors and brain abnormalities. *Cell*. 2012;150(4):816-830.
- Choi J, Huebner AJ, Clement K, et al. Prolonged Mek1/2 suppression impairs the development of embryonic stem cells. *Nature*. 2017;548(7666):219-223. doi:10.1038/nature23274.
- Neurofibromatosis. *NIH Consensus Statement Online*. 1987;6(12):1-19.
- Chelune GJ. Assessing reliable neuropsychological change. In: Franklin RD, ed. *Prediction in Forensic and Neuropsychology: Sound Statistical Practices*. Lawrence Erlbaum Associates Publishers; 2003:123-147.
- Woods SP, Childers M, Ellis RJ, Guaman S, Grant I, Heaton RK. A battery approach for measuring neuropsychological change. *Arch Clin Neuropsychol*. 2006;21(1):83-89. doi:10.1016/j.acn.2005.07.008.
- Kolb B, Harker A, Gibb R. Principles of plasticity in the developing brain. *Dev Med Child Neurol*. 2017;59(12):1218-1223. doi:10.1111/dmcn.13546.
- Gioia GA, Isquith PK, Guy SC, Kenworthy L. *Behavior Rating Inventory of Executive Function, Second Edition Professional Manual*. PAR, Inc.; 2015.
- Wochos GC, Semerjian CH, Walsh KS. Differences in parent and teacher rating of everyday executive function in pediatric brain tumor survivors. *Clin Neuropsychol*. 2014;28(8):1243-1257.