



Brazilian Journal of Physical Therapy

<https://www.journals.elsevier.com/brazilian-journal-of-physical-therapy>



SYSTEMATIC REVIEW

Effectiveness of virtual reality in children and young adults with cerebral palsy: a systematic review of randomized controlled trial



Junior Vitorino Fandim^{a,*}, Bruno Tirotti Saragiotto^a, Gustavo José Martiniano Porfírio^b, Renato Figueiredo Santana^c

^a Masters and Doctoral Program in Physical Therapy, Universidade Cidade de São Paulo, São Paulo, SP, Brazil

^b Faculty of Medicine, Universidade Municipal de São Caetano do Sul, São Caetano do Sul, SP, Brazil

^c Physical Therapy Department, Universidade Cidade de São Paulo, São Paulo, SP, Brazil

Received 7 October 2019; received in revised form 6 July 2020; accepted 17 November 2020

Available online 5 December 2020

KEYWORDS

Cerebral palsy;
Outcomes;
Rehabilitation;
Telerehabilitation;
Virtual reality

Abstract

Background: Cerebral palsy (CP) is one of the main causes of disability in childhood. Virtual reality (VR) has been used as a treatment option in this population, however its effectiveness is unclear.

Objective: To evaluate the effectiveness of VR in patients with CP.

Methods: We conducted electronic searches in EMBASE, MEDLINE, Cochrane library, PEDro, AMED, PsycINFO, and LILACS databases and trial site registries such as ClinicalTrials.gov and ICTRP. We included randomized controlled trials that tested the use of VR alone or in combination with other interventions compared to more conventional rehabilitation or usual care in individuals with CP. The primary outcomes were upper and lower limb function, postural control, and balance. The secondary outcomes included global motor function, perception, cognition and spatial functions, motivation, motor learning, and adverse events. Two independent reviewers extracted and assessed included articles for risk of bias using the Cochrane risk of bias tool. We use a meta-analysis with random effect model whenever possible. We analyzed the quality of evidence using the GRADE approach.

* Corresponding author at: Rua Cesário Galeno, 448, Tatuapé, CEP 03071-000 São Paulo, SP, Brazil.

E-mail: junior.fandim@hotmail.com (J.V. Fandim).

Results: We included 38 trials (pooled n = 1233 participants) in this review. There is very low quality of evidence that VR plus conventional rehabilitation is better than conventional rehabilitation for upper limb function. There is also very low quality evidence that VR alone is no better than conventional rehabilitation for upper and lower limb function. No adverse events were observed among the 10 trials that provided information on this outcome.

Conclusion: At present we have very limited to limited confidence in effect estimation for utilization of VR in this population. Future studies may change our confidence in results and effect estimates.

Protocol registration: PROSPERO CRD 42018102759.

© 2020 Associação Brasileira de Pesquisa e Pós-Graduação em Fisioterapia. Published by Elsevier Editora Ltda. All rights reserved.

Introduction

Cerebral palsy (CP) is one of the main causes of physical disability in children worldwide.^{1,2} Children with CP have altered motor function and postural control, which are highly associated with limitations in daily life activities.^{1,3,4,5} The prevalence of CP over the last 40 years is estimated to have increased from 1.5 to 2.5 per 1000 newborns.⁶

Virtual reality-based interventions (VR) have been used in the treatment of patients with CP.^{7,8} VR can be defined as an interactive immersion and simulation experience in an environment and real-world objects created by a computational system responding to real-time user movements.^{9,10} VR can be offered in an immersive (i.e. head-mounted display) and non-immersive (i.e. desktop display) manner. Rehabilitation with VR enables training at different levels of complexity with feedback in a safe and controlled environment.^{11,12} In addition, VR can enable clinicians to control the duration and intensity of tasks not performed in the real world.¹³ At the same time, VR offers meaningful learning experience by providing encouragement and motivation during rehabilitation.¹¹

Recently, randomized controlled trials were conducted to analyze the effects of VR in several areas.^{14,15,16,17,18,19,20} A 2017 systematic review²¹ assessed the effectiveness of VR rehabilitation on sensory and functional motor skills of children and adolescents with CP. A limitation of this review was the inclusion of study designs other than randomized controlled trial (e.g. case studies).²¹ A 2018 systematic review²² was the first comprehensive review with meta-analysis including only randomized controlled trials.²² However, there has been several recent studies published since their search in 2016.^{23,24,25,26,27,28,29,30,31} A 2019 systematic review assessed the effectiveness of VR in children with CP but only for hand function.³² Furthermore, the previous systematic reviews do not provide the strength and quality of the evidence (e.g. GRADE approach) based on VR applied in isolation or in combination with other treatments and for a wide range of outcomes. Thus, an updated and more comprehensive systematic review is warranted. We aimed to systematically review the effectiveness of VR to improve upper and lower limb function, postural control, and balance compared to other type of treatments, usual care, waiting list, no treatment or placebo in children and young adults with CP.

Methods

Protocol and registration

This review was prospectively registered in the International Prospective Register of Systematic Reviews (PROSPERO) CRD: 42018102759. This review is reported according to the Preferred Reporting Items for Systematic Reviews and Meta-Analyses (The PRISMA Statement).⁸⁹

Study selection

We included randomized controlled trials that consisted of individuals with CP. CP was defined as a group of non-progressive neurological disorders of motor and postural development that occurs in fetal or infant brain development.¹ It can be diagnosed by clinical examination and/or imaging tests. There were no exclusions regarding age, CP types, location of motor change, and severity.

We included the following types of VR: video games commercially available (e.g. Nintendo Wii) that were non-immersive or immersive (custom interface); applied in isolation or combined with other treatments. We considered any other type of treatments, no treatment, waiting list, usual care, or placebo as control groups.

The primary outcomes analyzed were upper limb function, lower limb function (divided into gait and strength of the lower limbs), and postural control and balance. The secondary outcomes included were global motor function, spatial functions, perception and cognition, motivation, motor learning, and adverse events. All outcomes needed to be assessed by a validated instrument. We included four time-points for each outcome: post intervention, short (> two weeks but ≤ three months), intermediate (> three months but ≤12 months), and long term follow-up (> 12 months).

Data sources and searches

The searches were performed in the following electronic databases: EMBASE (Ovid), MEDLINE (Ovid), LILACS, Cochrane library, PEDro, AMED (Ovid), and PsycINFO (Ovid) in March 2020. There were no restrictions regarding year

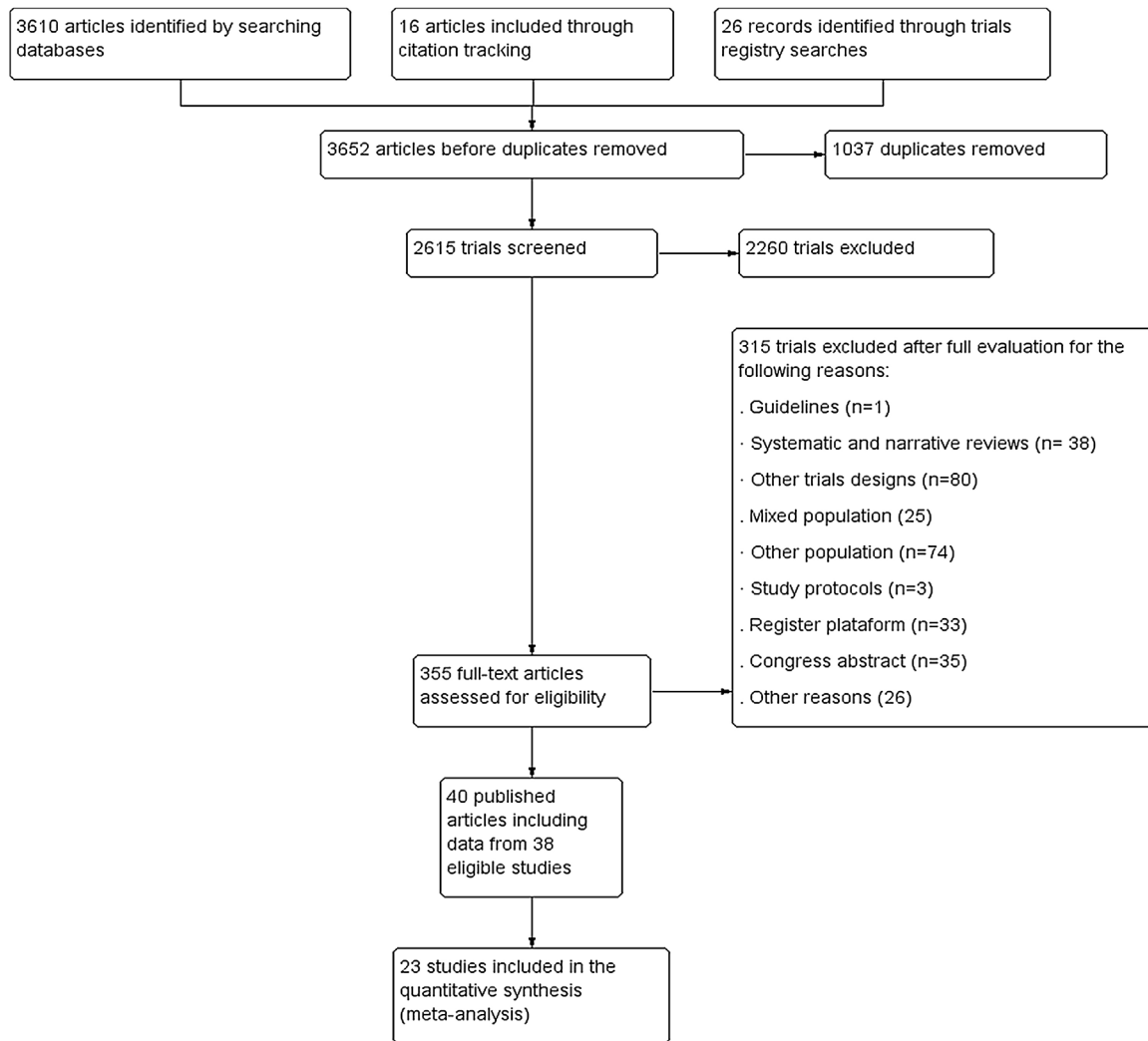


Fig. 1 Flowchart with the selection of the trials for the systematic review.

of publication or language. The search strategy used in the databases is described in the Supplemental online material. Conference proceedings were excluded.

We also performed searches on clinical trial site registries such as ClinicalTrials.gov and WHO International Clinical Trials Registry Platform (www.who.int/ictrp/en/) and manual searches on reference lists of eligible trials. Two authors independently screened the study titles, abstracts, and full texts of all identified studies. Any disagreement among the reviewers was resolved by consensus or arbitration by a third author.

Data extraction and risk of bias assessment

One author performed data extraction using a standardized form. Extracted data included name of the authors, country, year of publication, type of PC, outcome measures, age, number of participants, VR type, description of interventions, duration of sessions, frequency of intervention, duration of the intervention, and place of recruitment. Finally, data on treatment effects and number of participants in each group were extracted. Attempts to contact

the authors via e-mail were made when the information from the studies was insufficient or unclear. We extracted data from graphs using the WebPlotDigitizer (<https://automeris.io/WebPlotDigitizer/>). Data reported as mean and range of values were converted to mean and standard deviation data.³³ If possible, cross-over studies, when identified, had their data extracted preferably at the end of the first phase, if not possible the data were extracted at the end of the last phase and provided in descriptive form.³⁴

We used the 7-criteria Cochrane risk of bias tool.³⁵ Two independent reviewers (JF and RS) analyzed the risk of bias of all included trials. Disagreements between the reviewers were resolved by consensus or arbitration by a third author.

Data synthesis and analysis

We used mean differences (MD) with 95% confidence intervals (CI) when studies used continuous outcomes variables with the same scale. When different scales were used for continuous outcomes, we opted to use standardized mean differences (SMD) with 95% CI. We followed a system commonly used by Cohen 1988³⁶ for interpretation of effect

Table 1 Characteristics of virtual reality type, intervention, and location of included trials.

Author/ Year	Participants characteristics	Intervention	Duration of Session	Frequency	Duration of Intervention
Aran et al. 2019 ²³	Country: Turkey; N = 90; Mean age 11.1 years old; Type of CP: Hemiplegia	Microsoft Kinect for PC; EG: VR and Traditional Occupational Therapy; CG: Traditional Occupational Therapy	45 min	2 × week	10 weeks
Arnoni et al. 2019 ²⁴	Country: Brazil; N = 15; Mean age:(years old) 9.6; Type of CP: Mild spastic hemiplegia	Xbox Kinect; EG: VR and Conventional Rehabilitation; CG: Conventional Rehabilitation	45-50 min 45 min	2 × week	8 weeks
Ballester et al. 2019 ²⁵	Country: Spain; N = 14; Mean age:(years old): 38; Type of CP: Tetraplegia, triplegia, diplegia, and hemiplegia	Rehabilitation Gaming System; EG: VR; CG: Conventional Rehabilitation	30 min	3 × week	4 weeks
Okmen et al. 2019 ²⁶	Country: Turkey; N = 41; Mean age:(years old): 8.5; Type of CP: Quadriplegia, diplegia, triplegia, and hemiplegia	Eye Toy-Play system (Play station 2); EG: VR and Conventional Rehabilitation; CG: Conventional Rehabilitation	60 min	3-5 × week	4 weeks
Pin and Butler 2019 ²⁷	Country: China; N = 18; Mean age:(years old): 9.2; Type of CP: Bilateral spastic	TYMO; EG: VR and Usual Rehabilitation Program; CG: Usual Rehabilitation Program	20 min	4 × week	6 weeks
Pourazar et al. 2019 ²⁸	Country: Iran; N = 20; Mean age:(years old): 9.4; Type of CP: Spastic hemiplegia	Xbox Kinect; EG: VR; CG: Common Therapy Program	85-100 minutes	5 × first two week 3 × following week 2 × last two week	6 weeks

Table 1 (Continued)

Author/ Year	Participants characteristics	Intervention	Duration of Session	Frequency	Duration of Intervention
Sahin et al. 2019 ³⁰	Country: Turkey; N = 60; Mean age:(years old): 10.2; Type of CP: Hemiplegia	Microsoft Kinect; EG: VR and Traditional Occupational Rehabilitation; CG: Traditional Occupational Rehabilitation	45 min	2 × week	8 weeks
Tarakci et al. 2019 ³¹	Country: Turkey; N = 30; Mean age:(years old): 11; Type of CP: Spastic and dyskinetic	Leap Motion Controller; EG: VR; CG: Conventional Rehabilitation	60 min	3 × week	8 weeks
El-Shamy and El-Banna 2018 ⁴⁸	Country: Egypt; N = 40; Mean age:(years old): 9.6; Type of CP: Spastic hemiplegia	Nintendo Wii; EG: VR and Conventional Rehabilitation; CG: Conventional Rehabilitation	40-60 min 60 min	3 × week	12 weeks
Sajan et al. 2017 ⁵⁰	Country: India; N = 20; Mean age:(years old): 11.5; Type of CP: Diplegic, triplegic, and spastic quadriplegic	Nintendo Wii; EG: VR and Conventional Rehabilitation; CG: Conventional Rehabilitation	45 min	6 × week	3 weeks
Gatica-Rojas et al. 2017 ⁶⁴	Country: Australia; N = 32; Mean age:(years old): 10.7; Type of CP: Hemiplegia and spastic diplegia	Wii™ balance board; EG: VR; CG: Conventional Rehabilitation	30 min 40 min	3 × week	6 weeks
Pourazar et al. 2018 ²⁹	Country: Iran; N = 30; Mean age:(years old): 11.2; Type of CP: Not defined	Xbox Kinect; EG: VR and Home Physical Activity Program; CG: Physical Activity Program	25 min	3 × week	4 weeks
Piovesana e al 2017 ⁶⁹ †	Country: Australia; N = 102 †; Mean age:(years old): 11.7 †; Type of CP: Hemiplegia †	(MiTii) †; EG: VR; CG: Waitlist †	20-30 min †	6 × week †	20 weeks †
Mitchell et al. 2016 ⁵⁷ † †	Country: Australia; N = 101 † †; Mean age:(years old): 13 † †; Type of CP: Hemiplegia † †	(MiTii) † †; EG: VR; CG: Waitlist control group † †	30 min † †	6 × week † †	20 weeks † †

Table 1 (Continued)

Author/ Year	Participants characteristics	Intervention	Duration of Session	Frequency	Duration of Intervention
James et al. 2015 ⁵² †††	Country: Australia; N = 102†††; Mean age:(years old): 11.4 †††; Type of CP: Hemiplegia †††	(MiTii)†††; EG: VR; CG: Waitlist †††	30 min†††	6× week†††	20 weeks †††
Atasavun et al. 2016 ⁶³	Country: Turkey; N = 28; Mean age:(years old): 9.6; Type of CP: Hemiplegic	Wii Sports Resort™; EG: VR and Conventional Rehabilitation; CG: Conventional Rehabilitation	30-45 min 45 min	2-4× week	12 weeks
Urgen et al. 2016 ⁵⁸	Country: Turkey; N = 33; Mean age:(years old): 11.2; Type of CP: Spastic hemiplegic	Wii™ Fit; EG: VR; CG: Rehabilitation Program	45 min	2× week	9 weeks
Tarakci et al. 2016 ⁶²	Country: Turkey; N = 38; Mean age:(years old): 10.5; Type of CP: Hemiplegic, diplegic, dyskinetic and without description	Wii™ balance board e Wii™ Fit; EG: VR and Conventional Rehabilitation; CG: Conventional Rehabilitation	50 min	2× week	12 weeks
Ren et al. 2016 ⁵⁴	Country: China; N = 35; Mean age:(years old): 4.6; Type of CP: Spastic diplegia	Not specified; EG: VR and Occupational Rehabilitation; CG: Conventional and Occupational Rehabilitation	-	-	3 months
Preston et al 2016 ⁵³	Country: UK; N = 15; Mean age:(years old): 9.2; Type of CP: Not defined	Custom Computer for Rehabilitation; EG: VR/ Botulinum Toxin; CG: Usual Rehabilitation/ Botulinum Toxin	30 min	Average 14 sessions total	12 weeks
Cho et al 2016 ⁵⁵	Country: Republic of Korea; N = 18; Mean age:(years old): 9.8; Type of CP: Spastic	Treadmill Training with Virtual Reality (Nintendo Wii); EG: VR and Conventional Rehabilitation; CG: Treadmill Training and Conventional Rehabilitation	30 min	3× week	8 weeks

Table 1 (Continued)

Author/ Year	Participants characteristics	Intervention	Duration of Session	Frequency	Duration of Intervention
Bedair et al 2016 ⁴⁷	Country: Egypt; N = 40; Mean age:(years old): 7.15; Type of CP: Spastic hemiplegia	Xbox Kinect; EG: VR and Conventional Rehabilitation; CG: Conventional Rehabilitation	30-60 min 60 min	3 × week	4 months
Acar et al 2016 ⁴⁶	Country: Turkey; N = 30; Mean age:(years old): 9.6; Type of CP: Hemiparetic	Nintendo Wii; EG: VR and Bobath; CG: Bobath	60 min 45 min	2 × week	6 weeks
Zoccolillo et al 2015 ²⁰	Country: Italy; N = 22; Mean age:(years old): 6.8; Type of CP: Not defined	Xbox Kinect; EG: VR; CG: Conventional Rehabilitation (Bobath Principles)	30 min	2 × week	8 weeks
AlSaif and Alsenany 2015 ⁵¹	Country: Saudi Arabia; N = 40; Mean age:(years old): -; Type of CP: Spastic diplegia	Wii™ Fit; EG: VR; CG: No Intervention	20 min	7 × week	12 weeks
Arenas and Bravos 2014 ⁶⁰	Country: Chile; N = 32; Mean age:(years old): -; Type of CP: Hemiparetic	Wii™ Fit; EG: VR; CG: No Treatment CG: Conventional Rehabilitation	30 min	-	13 sessions
Chiu et al 2014 ⁴²	Country: Taiwan; N = 62; Mean age:(years old): 9.5; Type of CP: Spastic hemiplegia	Wii Sports Resort™; EG: VR and Conventional Rehabilitation; CG: Conventional Rehabilitation	40 min	3 × week	6 weeks
Klobucka et al. 2013 ⁶⁶	Country: Serbia; N = 42; Mean age:(years old): 8.1; Type of CP: Not defined	Virtual reality environment; EG: VR and Marching Training on lokomat; CG: Marching Training on lokomat	-	3-5 × week	20 sessions (4-6 weeks)

Table 1 (Continued)

Author/ Year	Participants characteristics	Intervention	Duration of Session	Frequency	Duration of Intervention
Chen et al. 2013 ¹⁹	Country: Taiwan; N = 27; Mean age:(years old): 8,6; Type of CP: Spastic hemiplegia and spastic diplegia	Eloton SimCycle Virtual Cycling System; EG: VR and (Strengthening ProgramPhysical Therapy); CG: General Physical Activity	40 min	3 × week	12 weeks
Chen et al. 2012 ⁵⁹	Country: Taiwan; N = 27; Mean age:(years old): 8.6; Type of CP: Spastic hemiplegia and spastic diplegia	Eloton SimCycle Virtual Cycling System; EG: VR and (Strengthening ProgramPhysical Therapy); CG: General Physical Activity	40 min	3 × week	12 weeks
Sharan et al. 2012 ⁴⁵	Country: India; N = 16; Mean age:(years old): 9.6; Type of CP: Not defined	Wii™ balance board e Wii™ Fit; EG: VR and Conventional Rehabilitation; CG: Conventional Rehabilitation	30 min	3 × week	3 weeks
Salem et al. 2012 ⁵⁶	Country: USA; N = 40; Mean age:(years old): 4.2; Type of CP: Neuropsychomotor Development Delay	Nintendo Wii Sports™ and Nintendo Wii Fit™; EG: VR; CG: Conventional Rehabilitation (MiTii); EG: VR; CG: No Intervention	30 min	2 × week	10 weeks
Ritterband-Rosenbaum et al. 2012 ⁶⁸	Country: Denmark; N = 40; Mean age:(years old): 11.5; Type of CP: Spastics hemiplegia	(MiTii); EG: VR; CG: No Intervention	30 min	7 × week	20 weeks
Rostami et al. 2012 ⁴⁴	Country: Iran; N = 32; Mean age:(years old): 8.1; Type of CP: Hemiparetic	E-Link; EG1: VR; EG2: VR and mCIMT; CG1: mCIMT; CG2: Conventional Rehabilitation	90 min 90 min 90 min 30 min	3 × week 2 × week	4 weeks of summer
Ramstrand and Lygnegård. 2012 ⁶¹	Country: Sweden; N = 18; Mean age:(years old): 13.2; Type of CP: Hemiplegia and diplegia	Wii™ balance board e Wii™ Fit; EG: VR; CG: No intervention	Minimum of 30 min	5 × week	5 weeks

Table 1 (Continued)

Author/ Year	Participants characteristics	Intervention	Duration of Session	Frequency	Duration of Intervention
Wade et al. 2012 ⁶⁵	Country: UK; N = 19; Mean age:(years old): 9.1; Type of CP: Not defined	Computer and equipment with seat and platform; GE: VR; GC: No intervention	-	(3-5× week)	3 months
Jannink et al. 2008 ⁴⁹	Country: Netherlands; N = 10; Mean age:(years old): 12.1; Type of CP: Tetraplegia, diplegia and hemiplegia	Eye Toy-Play system (Play station 2); EG: VR and Conventional Rehabilitation; CG: Conventional Rehabilitation	30 min	2× week	6 weeks
Reid and Campbell. 2006 ⁴³	Country: Canada; N = 31; Mean age:(years old): 9.5; Type of CP: Not defined	RV IREX System; EG: VR and physiotherapy/ occupational; CG: Physiotherapy/ occupational	90 minutes	1× week	8 weeks
Harris and Reid 2005 ⁷⁰	Country: Canada; N = 16; Mean age:(years old): 10.1; Type of CP: Spastics, quadriplegia, diplegia; hemiplegia and athetoid	RV IREX System; EG: VR and Physical / Occupational Therapy; CG: Physical / Occupational Therapy	60 min	-	8 sessions
Akhutina et al. 2003 ⁶⁷	Country: Russia; N = 1st (15) 2nd (51); Mean age:(years old): 10.2; Type of CP: 1 st (Cerebral palsy) 2nd (Diplepics, hemiparesis, anatomical statical and hyperkinetics).	VRT Super Scape 3D; EG: VR and Non-Specific Rehabilitation; CG: Non-Specific Rehabilitation Training	30–60 min	6-8× per month	4 weeks

Abbreviations: CP, Cerebral palsy; EG, Experimental group; CG Control group; mCIMT, Modified Induced Containment Therapy; MiTii, Move It to Improve It; IREX VR, System Interactive Rehabilitation and Exercise Systems/ Mandala® Gesture Xtreme; E-Link, E-Link evaluation and exercise system.

† Outcomes related to Piovesana et al study.⁶⁹

†† Outcomes related to Mitchel et al study.⁵⁷

††† Outcome related to James et al study.⁵²

sizes: $d = 0.2$ represents a small; $d = 0.5$ a medium; and $d = 0.8$ a large effect, and used in previous studies.^{37,38} Odds ratios with 95% CI were used to calculate treatment effects or adverse events for dichotomous variables. Meta-analyses were performed using Review Manager 5.3.³⁹ When data could not be included in a meta-analysis, data are presented descriptively.

Heterogeneity of data was evaluated by visual inspections of the forest plot, observing the overlap of the 95% CIs, followed by a Chi-square test and I^2 statistic as recommended by the Cochrane Handbook.³⁴ We pooled the data using a random effect model. When we observed substantial data heterogeneity, $I^2 > 50\%$ and $p < 0.10$, quality of evidence was downgraded due to inconsistency. Where possible, we stratified the analyses into subgroups to verify if the effects varied based on the intervention duration (i.e. ≤ 30 minutes, 30–60 minutes, >60 minutes) or frequency of intervention ($\leq 2 \times$ week, $3 \times$ week, $\geq 3 \times$ week). We performed sensitivity analyses for VR type (commercial game or personalized game) for comparisons that presented with moderate level of heterogeneity.

We evaluated the quality of evidence for each outcome using GRADE as recommended by the Cochrane Handbook.³⁴ The quality of evidence was based upon the performance of the studies for five domains: 1) study design and risk of bias (downgraded by one level if 25% or more of the participants in the comparison are from studies with high risk of bias defined as one or more criteria classified as high risk of bias in the study); 2) Inconsistency (downgrade by one level if by visual inspection the presence of wide variation of effect estimates is verified or the I^2 test is greater than 50%); 3) Indirectness (downgrade by one level if more than 50% of participants vary from the population of interest (e.g. mixed populations or multiple disorders)); 4) Inaccuracy (downgrade by one level if, in dichotomous outcomes, the sample size is less than 300 participants or for continuous outcomes, less than 400 participants⁴⁰); and 5) Publication bias (downgrade by one level if publication bias was identified by visual inspection of funnel plots if more than 10 studies are included in the comparison). The quality of evidence was defined as follows:

High quality of evidence: New research is unlikely to change confidence in the effect estimates;

Moderate quality of evidence: Further research is likely to have an important impact on the confidence in the effect estimates and may change the estimate;

Low quality of evidence: More research is very likely to have impact on the confidence in the effect of the estimate and is likely to change the estimate;

Very low quality of evidence: There is much uncertainty about the effect of the estimate;

No evidence: No randomized controlled trials were identified to evaluate this outcome.

The primary findings of this review are included in a Summary of findings custom table using GRADEpro GDT.⁴¹

Results

We included 38 randomized controlled trials (40 references), of which three had a crossover design (Fig. 1). In total, 1233 participants of both sex with ages between 4 and 38 years

	Random sequence generation (selection bias)	Allocation concealment (selection bias)	Blinding of participants and personnel (performance bias)	Blinding of outcome assessment (detection bias)	Incomplete outcome data (attrition bias)	Selective reporting (reporting bias)	Other bias
Acar 2016	+	+	+	+	+	+	+
Akhutina 2003	+	+	+	+	?	+	+
AlSaif 2015	?	?	+	+	?	+	+
Aran 2020	+	+	+	+	+	+	+
Arnoni 2019 May	+	+	+	+	+	+	+
Atasavun 2016	+	?	+	+	+	+	+
Ballaster 2019	+	+	+	+	+	+	+
Bedair 2016	+	?	+	+	+	+	+
Chen 2012	?	?	+	+	+	+	+
Chen 2013	?	?	+	+	+	+	+
Chiu 2014	+	+	+	+	+	+	+
Cho 2016	+	+	+	+	+	+	+
El-Shamy 2018	+	+	+	+	+	+	+
Harris 2005	?	?	+	+	+	+	?
James 2014	+	+	+	+	+	+	+
Jannink 2008	?	?	+	+	+	+	?
Marco 2014	+	+	+	+	+	+	+
Mitchell 2016	+	+	+	+	+	+	+
Okmen 2019	+	?	+	?	+	+	+
Pin 2019	+	?	+	+	+	+	+
Piovesana 2017	+	+	+	+	+	+	+
Pourazar 2018	+	?	+	+	+	?	+
Pourazar 2019	?	?	+	?	+	+	+
Preston N 2016	+	+	+	+	+	+	+
Ramstrand 2012	?	?	+	+	+	+	+
Reid 2006	+	+	+	+	+	+	?
Ritterband-Rosenbaum 2012	+	+	+	+	+	+	+
Rojas 2017	+	?	+	+	+	+	+
Rostami 2012	+	+	+	+	+	+	?
Sahin 2019	+	+	+	+	+	+	+
Sajan 2017	+	+	+	+	+	+	+
Salem 2012	+	+	+	+	+	+	+
Sharan 2012	+	?	+	+	+	+	?
Tarakci 2016	+	+	+	+	+	+	+
Tarakci 2019	+	+	+	+	+	+	+
Urgen 2016	+	+	+	+	+	+	+
Wade 2012	+	?	+	+	+	+	+
Zoccolillo 2015	+	?	+	+	+	+	+

Fig. 2 Summary of risk of bias.

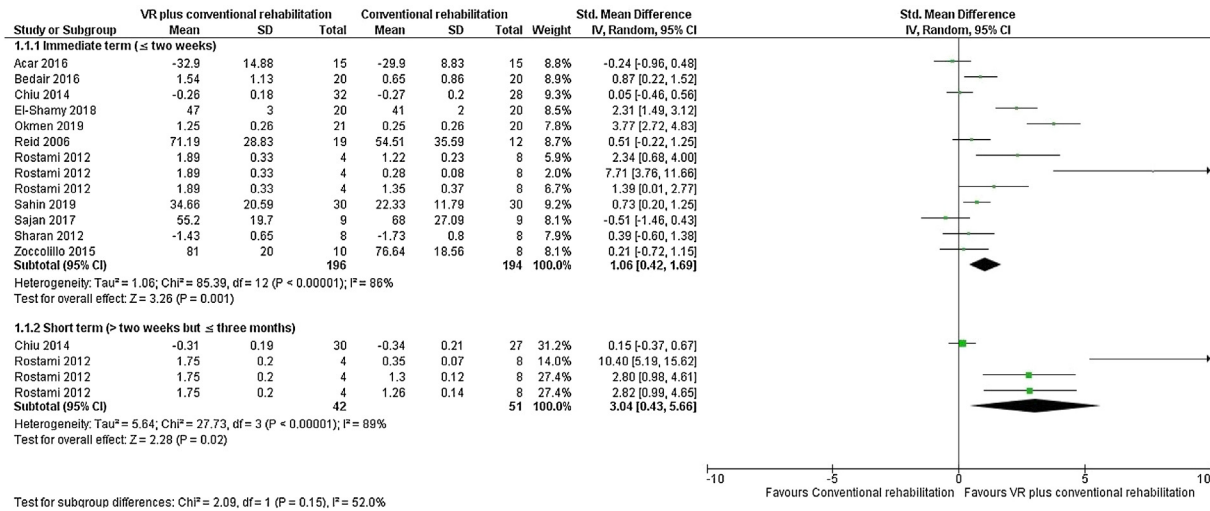


Fig. 3 Forest plot of comparison: VR plus conventional rehabilitation versus conventional rehabilitation, outcome: Upper limb function – Post intervention and short term.

old were included. The sample size ranged from 10 to 102 participants with a mean ± standard deviation of 34.2 ± 17.5 participants. The characteristics of included studies are presented in Table 1.

Characteristics of interventions

In general, the trials used VR for training upper limb function,^{26,30,31,42–54} lower limbs,^{19,26,27,50,51,54–59} postural control and balance,^{24,27,28,45,50,55,58,60–65} global motor function,^{19,24,27,30,46,47,51,54–59,62,63,66} spatial functions, cognition, and perceptions,^{23,29,50,52,67–69} and motivational influence.⁴³ The use of VR ranged from custom technological resources^{27,31,44,52,53,57,65,67–69} to consoles commercially available as Nintendo Wii.^{42,45,46,48,50,51,55,56,58,60–64} Session duration ranged from 20^{51,27,29,49,52,53,55,56,60,61,64,67,68} to more than 60 minutes^{26,28,31,43,44,46–48,67,70} with some trials with unspecified time.^{45,65} The frequency of treatment sessions ranged from two^{20,23,24,30,43,46,49,53,56,58,62,67} to more than three times per week,^{26–28,31,50–52,61,63,65,66,68} with two trials not reporting the frequency.^{60,70} In general, interventions ranged from four to twenty weeks in duration. The use of VR combined with conventional versus conventional rehabilitation was analyzed in 25 trials,^{19,20,23,24,26,27,29,30,42–50,54,55,59,62,63,66,67,70} VR versus conventional rehabilitation in eight trials,^{25,28,31,53,56,58,60,64} and VR versus waiting list in five trials.^{51,52,61,65,68}

Risk of bias

Risk of bias of the 38 eligible trials are described in Fig. 2. A total of 26 trials performed adequate randomization^{23,24,26,27,29–31,42–45,47,48,50,52,53,55,57,58,60,62–65,69,71} Only 11 trials performed allocation concealment.^{23,24,30,48,50,52,56–58,60,69} All trials were classified as having a high risk of bias for blinding of participants and therapists. A total of 29 trials provided complete information on the outcomes analyzed.^{19,23,24,26–31,42,44–46,48–50,52,55–60,63,64,68–70}

A total of 35 trials reported all of the outcomes analyzed.^{19,23,24,26–28,30,31,42–53,55–59,61–65,68–71}

Primary outcomes

Effect of VR plus conventional rehabilitation versus conventional rehabilitation

We included 11 trials that analyzed upper limb function.^{20,26,30,42–48,50} There is very low quality evidence (downgraded due to risk of bias, inconsistency, and imprecision) that combining VR to a conventional rehabilitation program results in improved function of the upper limb (large effect) at post intervention (SMD = 1.06, 95% CI 0.42, 1.69; n = 390, 11 trials, I² = 86%) and at short-term follow-up (SMD = 3.04, 95% CI 0.43, 5.66; n = 93, 2 trials, I² = 89%) when compared to a conventional rehabilitation program alone (Fig. 3).

Function of the lower limbs related to gait and strength were analyzed in five trials.^{19,26,27,50,55} There is low quality evidence (downgraded due to risk of bias and imprecision) that there is no benefit of adding VR to a conventional rehabilitation to improve gait at post intervention (SMD = -0.08, 95% CI -0.45, 0.29; n = 123, 5 trials, I² = 6%).^{50,55,62} There is low quality evidence (downgraded due to risk of bias and inaccuracy) that adding VR to conventional rehabilitation leads to better improvement of lower limb strength (large effect) at post intervention (SMD = 0.66, 95% CI 0.01, 1.32; n = 45, 2 trials, I² = 12%) (Supplemental online material).

Seven trials^{24,27,45,50,55,62,63} analyzed balance. There is very low quality evidence (downgraded due to risk of bias, inconsistency, and imprecision) that there is no benefit of adding VR to a conventional rehabilitation program to improve postural control and balance (SMD = 0.43, 95% CI -0.11, 0.97; n = 124, 6 trials, I² = 53%) (Supplemental online material). One trial²⁴ demonstrated no difference for the improvement of postural stability (p > 0.05).

Table 2 Quality of evidence assessment (GRADE).

Quality assessment (GRADE)							Summary of findings		
Number of studies	Risk of bias	Inconsistency	Indirectness	Imprecision	Publication bias	Overall quality of evidence	Number of participants		Effect
							VR	CR	Effect Size (95% CI)
Upper limb function - post intervention 11 RCTs	Serious ^a	Serious ^b	Not Serious	Serious ^c	Undetected	⊗⊗⊗⊕ Very low	196	194	SMD 1.06 (0.42, 1.69)
<i>Upper limb function - Short term</i> 2 RCTs	Serious ^a	Serious ^b	Not Serious	Serious ^c	Undetected	⊗⊗⊗⊕ Very low	42	51	SMD 3.04 (0.43, 5.66)
<i>Lower limb function (Gait) - post intervention</i> 5 RCTs	Serious ^a	Not Serious	Not Serious	Serious ^c	Undetected	⊗⊗⊕⊕ Low	62	61	SMD -0.08 (-0.45, 0.29)
<i>Lower limb function (Gait) - Short term</i> -	-	-	-	-	-	-	-	-	-
<i>Lower limb function (Strength) - post intervention</i> 2 RCTs	Serious ^a	Not Serious	Not Serious	Serious ^c	Not Serious	⊗⊗⊕⊕ Low	22	23	SMD 0.66 (0.01, 1.32)
<i>Lower limb function (Strength) - Short term</i> -	-	-	-	-	-	-	-	-	-
<i>Postural control and Balance - post intervention</i> 6 RCTs	Serious ^a	Serious ^b	Not Serious	Serious ^c	Undetected	⊗⊗⊗⊕ Very low	62	62	SMD 0.43 (-0.11, 0.97)
<i>Postural control and Balance - Short term</i> -	-	-	-	-	-	-	-	-	-

Table 2 (Continued)									
Quality assessment (GRADE)							Summary of findings		
Number of studies	Risk of bias	Inconsistency	Indirectness	Imprecision	Publication bias	Overall quality of evidence	Number of studies		Effect
							VR	CR	Effect Size (95% CI)
<i>Upper limb function - post intervention</i>									
4 RCTs	Serious ^a	Serious ^b	Not Serious	Serious ^c	Undetected	⊗⊗⊗⊕ Very low	70	78	SMD 0.48 (-0.47, 1.43)
<i>Upper limb function - Short term</i>									
1 RCT	Serious ^a	Serious ^b	Not Serious	Serious ^c	Undetected	⊗⊗⊗⊕ Very low	8	16	SMD 3.95 (-4.86, 12.75)
<i>Lower limb function (Gait) - post intervention</i>									
2 RCTs	Serious ^a	Not Serious	Not Serious	Serious ^c	Undetected	⊗⊗⊕ Low	55	55	MD 0.33 (-0.09, 0.75)
<i>Lower limb function (Gait) - Short term</i>									
-	-	-	-	-	-	-	-	-	-
<i>Lower limb function (Strength) - post intervention</i>									
1 RCT	Serious ^a	Not Serious	Not Serious	Serious ^c	Undetected	⊗⊗⊕ Low	40	40	MD -0.30 (-1.49, 0.89)
<i>Lower limb function (Strength) - Short term</i>									
-	-	-	-	-	-	-	-	-	-
<i>Postural control and Balance - post intervention</i>									
3 RCTs	Serious ^a	Serious ^b	Not Serious	Serious ^c	Undetected	⊗⊗⊗⊕ Very low	56	56	SMD 1.43 (0.6, 2.24)
<i>Postural control and Balance - Short term</i>									
1 RCT	Serious ^a	Not Serious	Not Serious	Serious ^c	Undetected	⊗⊗⊕ Low	16	16	MD 0.48 (-0.31, 1.27)

Table 2 (Continued)							Summary of findings		
Quality assessment (GRADE)							Summary of findings		
Number of studies	Risk of bias	Inconsistency	Indirectness	Imprecision	Publication bias	Overall quality of evidence	Number of studies		Effect
							VR	Control	Effect Size (95% CI)
Upper limb function - post intervention 2 RCTs	Serious ^a	Serious ^b	Not Serious	Serious ^c	Undetected	⊗⊗⊗⊕ Very low	58	57	SMD 0.64 (-0.4, 1.67)
<i>Upper limb function - Short term</i>	-	-	-	-	-	-	-	-	-
Lower limb function (Gait) - post intervention 2 RCTs	Serious ^a	Not Serious	Not Serious	Serious ^c	Undetected	⊗⊗⊕ Low	66	63	SMD 0.67 (0.13, 1.21)
<i>Lower limb function (Gait) - Short term</i>	-	-	-	-	-	-	-	-	-
Lower limb function (Strength) - post intervention 1 RCT	Serious ^a	Not Serious	Not Serious	Serious ^c		⊗⊗⊕ Low	46	43	MD 2.60 (1.03, 4.17)
<i>Lower limb function (Strength) - Short term</i>	-	-	-	-	-	-	-	-	-
<i>Postural control and Balance - post intervention</i>	-	-	-	-	-	-	-	-	-
<i>Postural control and Balance - Short term</i>	-	-	-	-	-	-	-	-	-

Abbreviations: GRADE, Grading of Recommendations Assessment Development and Evaluation; RCTs, randomized controlled trials; VR, virtual reality plus conventional rehabilitation; CR, conventional rehabilitation; MD, mean difference; SMD, standardised mean differences; CI, confidence interval; VR, virtual reality.

^a > 25% of the participants from studies with high risk of bias.

^b I² test is greater than 50%.

^c Sample size is less than 400 participants and large CI.

Effect of VR versus conventional rehabilitation

We included six trials that analyzed upper limb function.^{25,31,44,49,53,56} There is very low quality evidence (downgraded due to risk of bias, inconsistency, and imprecision) that there is no benefit between the use of VR versus conventional rehabilitation to improve upper limb function at post intervention (SMD = 0.48, 95% CI -0.47, 1.43; n = 148, 4 trials, $I^2 = 79\%$) and at short term follow-up (SMD = 3.95, 95% CI -4.86, 12.75; n = 24, 2 trials, $I^2 = 93\%$) (Supplemental online material).

Two trials^{56,58} analyzed gait-related lower limb function. There is low quality evidence (downgraded due to risk of bias and imprecision) that there is no benefit between the use of VR versus conventional rehabilitation to improve gait speed at post intervention (MD 0.33, 95% CI -0.09, 0.75; n = 110, 2 trials, $I^2 = 0\%$) and functional strength post intervention (MD -0.30, 95% CI -1.49, 0.89; n = 80, 1 trial, $I^2 = 0\%$) (Supplemental online material).

Four trials analyzed balance.^{56,58,60,64} There is a very low quality evidence (downgraded due to risk of bias, inconsistency, and imprecision) that there is a large effect of VR versus conventional rehabilitation to improve postural control and balance at post intervention (SMD = 1.43, 95% CI 0.61, 2.24; n = 142, 3 trials, $I^2 = 74\%$) and also low quality evidence (downgraded due to risk of bias and imprecision), that there is no benefit between the use of VR versus conventional rehabilitation to improve postural control and balance at short term follow-up (SMD = 0.41, 95% CI -0.29, 1.11; n = 32, 1 trial, $I^2 = 0\%$) (Supplemental online material). One trial²⁸ demonstrated the superiority of VR to improve postural stability ($p < 0.05$).

Effect of VR versus waiting list/no treatment

Two trials^{51,52} analyzed upper limb function. There is very low quality evidence (downgraded due to risk of bias, inconsistency, and imprecision) that there is no benefit between the use of VR versus no treatment to improve upper limb function at post intervention (SMD = 0.64, 95% CI -0.40, 1.67; n = 115, 2 trials, $I^2 = 84\%$) (Supplemental online material).

Two trials^{51,57} analyzed gait-related lower limb function. There is low quality evidence (downgraded due to risk of bias and imprecision) that there is a moderate effect of using VR versus no treatment to improve gait at post intervention (SMD 0.67, 95% CI 0.13, 1.21; n = 129, 2 trials, $I^2 = 49\%$) and a large effect to improve functional strength at post intervention (MD 2.60, 95% CI 1.03, 4.17; n = 89, 1 trial, $I^2 = 0\%$) (Supplemental online material).

The summary of findings and the overall quality of evidence for the primary outcomes are described in [Table 2](#).

Secondary outcomes

A total of nine trials analyzed global motor function,^{19,24,27,30,46,47,55,62,63} three trials spatial function, perception, and cognition^{29,50,67} for the effect of VR combined to a conventional rehabilitation versus conventional rehabilitation alone. Two trials analyzed global motor function^{56,58} for the effect of VR versus conventional rehabilitation. Two trials analyzed global motor function^{49,58} and two trials spatial and executive functions^{68,69} for the

effect of VR versus waiting list or no treatment. Most of the comparisons demonstrated low quality of evidence. The benefits of VR added to a conventional rehabilitation program or used alone is unclear and may result in a slight improvement in spatial perception and executive functions. The evidence suggests that adding VR to conventional rehabilitation or used alone results in little to no difference in global motor function. Further details can be found in the Supplemental online material.

Sensitivity analysis and subgroups

The majority of the subgroup and sensitivity analyzes did not demonstrate significant differences.

Publication Bias

We did not assess publication bias because few studies were included in the review.

Discussion

VR has been used in clinical rehabilitation for the past two decades. We found very low-quality evidence that there is a moderate effect of adding VR to conventional rehabilitation compared to conventional rehabilitation alone for improvement in upper limb function at post intervention and short term follow-up. Further, there is very low-quality evidence that there is a moderate effect of using VR compared to conventional rehabilitation for improvement in postural control and balance at post intervention. Also, there is low quality of evidence of small to large effect of VR compared to no treatment for improvement in gait and strength of the lower limb at intermediate term. Although there has been an increase in the number of publications investigating the effects of VR alone or associated with other interventions. The effect of the intervention remains unclear for most of the comparisons, outcomes and follow-up. At present, we have limited confidence in the effect estimates and the results should be interpreted with cautions.

One of the main hypotheses for the benefit of VR in rehabilitation is related to the simultaneous stimulation of cognitive and motor processes.^{72,73} VR enables a rewarding and challenging virtual environment in a recreational and fun context to engage in new experiences.^{72,74} The use of VR also enables encouragement and motivation to solve problems in different contexts. It also provides social participation, flexibility of use, feedback, and accomplishment of repetitive tasks at different difficulty levels, promoting neuroplasticity.^{75,76,77} The results of the review also indicated greater effect of VR compared to other treatments or no treatment for improvement of upper limb function, postural control, gait, and strength of lower limbs. Most participants were children from rehabilitation centers, so the clinician should consider patient preference and the present evidence to suggest the use or not of VR as an adjuvant to rehabilitation. It is essential at this stage that evidence-based practice in pediatric physiotherapy is considered to provide the best health care for children and families.⁷⁸

We analyzed the use of VR in six intervention approaches for children with CP. At this time, the evidence related to the use of VR is based on 1233 patients from 19 different countries. The risk of bias varied substantially between the trials included in the systematic review. The reporting of the application of VR and classification of CP type was not clear in some studies, and only few trials reported on potential risks and adverse events.^{19,20,50,52,53,56,60,64} Most of the evidence related to VR rehabilitation has been obtained either immediately post intervention or at short-term follow-up,^{42,44,64} with no information at intermediate and long-term follow-up.

This is the first systematic review to our knowledge to analyze risk of bias in VR trials for individuals with CP and to use the GRADE approach to determine the quality of evidence. Previous reviews included studies of varied designs,^{79,80} and used diverse instruments to assess methodological quality and bias.^{22,77,79,81} In the present review we used the Cochrane risk of bias tool³⁵ and reported the review according to PRISMA guidelines.⁸² We conducted an extensive search in the main databases, but trials stored in the gray literature were not included, therefore, the likelihood of publication bias cannot be ruled out.^{83,84} Some trials showed little compliance for concealed allocation, blinding of participants, and therapists which may have influenced the effect estimates.^{85,86}

Despite the recent growth in number of trials, heterogeneity in the design of those trials and intervention comparisons, make definitive conclusions difficult. Strategy for conducting multicenter studies could be an approach to obtain larger sample sizes. Better reporting of the interventions, and the use of the TIDieR checklist^{87,88} is also needed to add transparency and reproducibility of interventions. It would be important to also develop a minimum set of outcomes for conducting trials in this population.^{89,90} This strategy would reduce variability of measurement instruments, outcomes, and would help standardization of the frequency of interventions and follow-up periods.

Conclusions

Our findings suggest that VR demonstrates some short-term benefits to improve upper and lower limb function and postural control and balance in individuals with CP. However, the quality of evidence ranged from very low to low, with very limited confidence in the effect estimate.

Funding

None.

Conflict of Interest

The authors of this review declare no conflict of interest.

Acknowledgements

We thank Leonardo O. P. Costa for critical revision of the manuscript and assistance in data analysis.

References

- Rosenbaum P, Paneth N, Leviton A, Goldstein M, Bax M. The Definition and Classification of Cerebral Palsy. *Dev Med Child Neurol.* 2007;49(s2):1–44.
- Cans C. Surveillance of cerebral palsy in Europe: a collaboration of cerebral palsy surveys and registers. Surveillance of Cerebral Palsy in Europe (SCPE). *Developmental Medicine & Child Neurology.* 2000;42(December (12)): 816–824.
- Shumway-Cook A., S H, D K, R P, M. W. Effect of balance training on recovery of stability in children with cerebral palsy. *Dev Med Child Neurol.* 2003;45(9):591–602.
- Deluca SC, Echols K, Law CR, Ramey SL. Intensive pediatric constraint-induced therapy for children with cerebral palsy: randomized, controlled, crossover trial. *J Child Neurol.* 2006;21(11):931–938.
- Fedrizzi E, Pagliano E, Andreucci E, Oleari G. Hand function in children with hemiplegic cerebral palsy: prospective follow-up and functional outcome in adolescence. *Dev Med Child Neurol.* 2003;45(2):85–91.
- Odding E, Roebroek ME, Stam HJ. The epidemiology of cerebral palsy: Incidence, impairments and risk factors. *Disabil Rehabil.* 2006;28(4):183–191, 2006/01/01.
- Dewar R., Love, Johnston L.M. Exercise interventions improve postural control in children with cerebral palsy: a systematic review. *Dev Med Child Neurol.* 2015;57(6):504–520.
- Tinderholt MH, Ostensjo S, Larun L, Odgaard-Jensen J, Jahnsen R. Intensive training of motor function and functional skills among young children with cerebral palsy: a systematic review and meta-analysis. *BMC Pediatr.* 2014;14:292.
- Pimentel K, Teixeira K. *Virtual reality: Through the new looking glass.* 2nd ed; 1995. New York.
- Weiss P, Kizony R, Feintuch U, Katz N. *Virtual reality in neurorehabilitation.* Cambridge University Press; 2006.
- Page SJ, Levine P, Sisto S, Bond Q, Johnston MV. Stroke patients' and therapists' opinions of constraint-induced movement therapy. *Clin Rehabil.* 2002;16(1):55–60.
- Levin MF. Can virtual reality offer enriched environments for rehabilitation? *Expert Rev Neurother.* 2011;11(2):153–155.
- Deutsch JE, Borbely M, Filler J, Huhn K, Guarrera-Bowlby P. Use of a low-cost, commercially available gaming console (Wii) for rehabilitation of an adolescent with cerebral palsy. *Phys Ther.* 2008;88(10):1196–1207.
- Dascal J, Reid M, Ishak WW, Spiegel B, Recacho J, Rosen B. Virtual Reality and Medical Inpatients : A Systematic Review of Randomized, Controlled Trials. *Innov Clin Neurosci.* 2017;14(1–2):14–21.
- Wang M, Reid D. Virtual reality in paediatric neurorehabilitation: attention deficit hyperactivity disorder, autism and cerebral palsy. *Neuroepidemiology.* 2011;36(1):2–18.
- Dockx K, Bekkers EMJ, Van den Bergh V, et al. Virtual reality for rehabilitation in Parkinson's disease. *Cochrane Database Syst Rev.* 2016;(12).
- Laver K.E., Lange B., George S., Deutsch J.E., Saposnik G., M C. Virtual reality for stroke rehabilitation. *Cochrane Database Syst Rev.* 2017(11).
- Molina KI, Ricci NA, de Moraes SA, Perracini MR. Virtual reality using games for improving physical functioning in older adults: a systematic review. *J Neuroeng Rehabil.* 2014;11:156.
- Chen CL, Chen CLY, Liaw MY, Chung CY, Wang CJ, Hong WH. Efficacy of home-based virtual cycling training on bone mineral density in ambulatory children with cerebral palsy. *Osteoporos Int.* 2013;24(4):1399–1406.
- Zoccolillo LMD, Cincotti F, Muzzioli L, Gobbetti T, Paolucci S, Iosa M. Video-game based therapy performed by children with cerebral palsy a cross-over randomized controlled trial and

- across sectional quantitative measure of physical activity. *Eur J Phys Rehabil Med.* 2015;51(6):669–676.
21. Ravi DK, Kumar N, Singhi P. Effectiveness of virtual reality rehabilitation for children and adolescents with cerebral palsy: an updated evidence-based systematic review. *Physiotherapy.* 2017;103(3):245–258.
 22. Chen Y., Fanchiang H.D., A. H. Effectiveness of virtual reality in children with cerebral palsy: a systematic review and meta-analysis of randomized controlled trials. *Phys Ther.* 2018;98(1):63-77.
 23. Aran OT, Sahin S, Kose B, Agce ZB, Kayihan H. Effectiveness of the virtual reality on cognitive function of children with hemiplegic cerebral palsy: a single-blind randomized controlled trial. *International Journal of Rehabilitation Research.* 2019;43(March (1)):12–19.
 24. Arnoni JLB, Pavao SL, dos Santos Silva FP, Rocha N. Effects of virtual reality in body oscillation and motor performance of children with cerebral palsy: a preliminary randomized controlled clinical trial [with consumer summary]. *Complement Ther Clin Pract.* 2019;35:189–194.
 25. Ballester B.R., Mura A., Maier M., et al. Adaptive VR-based rehabilitation to prevent deterioration in adults with cerebral palsy. Paper presented at: Proc. 13th Int'l Conf. on Virtual Rehab 2019.
 26. Okmen BM, Aslan MD, Nakipoglu YGF, Ozgirgin N. Effect of virtual reality therapy on functional development in children with cerebral palsy: A single-blind, prospective, randomized-controlled study. *Turk J Phys Med Rehabil.* 2019;65(4):371–378.
 27. Pin TW, Butler PB. The effect of interactive computer play on balance and functional abilities in children with moderate cerebral palsy: a pilot randomized study. *Clin Rehabil.* 2019;33(April (4)):704–710.
 28. Pourazar M, Bagherzadeh F, Mirakhori F. Virtual reality training improves dynamic balance in children with cerebral palsy. *Int J Dev Disabil.* 2019.
 29. Pourazar M., Mirakhori F., Hemayattalab R., F. B. Use of virtual reality intervention to improve reaction time in children with cerebral palsy: A randomized controlled trial. *Dev Neurorehabil.* Nov 2018;21(8):515-520.
 30. Sahin S, Kose B, Aran OT, Bahadir AZ, Kayihan H. The Effects of Virtual Reality on Motor Functions and Daily Life Activities in Unilateral Spastic Cerebral Palsy: A Single-Blind Randomized Controlled Trial. *Games Health J.* 2019;8(6):1–8.
 31. Tarakci E, Arman N, Tarakci D, Kasapcopur O. Leap Motion Controller-based training for upper extremity rehabilitation in children and adolescents with physical disabilities: A randomized controlled trial. *J Hand Ther.* 2019;19(April (19)):1–8.
 32. Rathinam C, Mohan V, Peirson J, Skinner J, Nethaji KS, Kuhn I. Effectiveness of virtual reality in the treatment of hand function in children with cerebral palsy: A systematic review. *J Hand Ther.* 2019;32(4), 426-434.e421.
 33. Hozo SP, Djulbegovic B, Hozo I. Estimating the mean and variance from the median, range, and the size of a sample. *BMC Med Res Methodol.* 2005, 5(1471-2288 (Electronic)):1-10.
 34. Higgins JPT, Green S, eds. *Cochrane Handbook for Systematic Reviews of Interventions Version 5.1.0 [updated March 2011]*. The Cochrane Collaboration; 2011. Available from [http://handbook.cochrane.org.](http://handbook.cochrane.org;); 2011.
 35. Higgins JP, Altman DG, Gotzsche PC, et al. The Cochrane Collaboration's tool for assessing risk of bias in randomised trials. *BMJ.* 2011;343(October (18)):d5928.
 36. Cohen J. *Statistical Power Analysis in the Behavioral Sciences.* Hillsdale (NJ): Lawrence Erlbaum Associates; 1998.
 37. Araújo PA, Starling JMP, Oliveira VC, Gontijo APB, Mancini MC. Combining balance-training interventions with other active interventions may enhance effects on postural control in children and adolescents with cerebral palsy: a systematic review and meta-analysis. *Braz J Phys Ther.* 2020;24(July–August (4)):295–305.
 38. Salazar AP, Pagnussat AS, Pereira GA, Scopel G, Lukrafka JL. Neuromuscular electrical stimulation to improve gross motor function in children with cerebral palsy: a meta-analysis. *Braz J Phys Ther.* 2019;23(September–October (5)):378–386.
 39. Review Manager (RevMan) [Computer program]. Version 5.3. Copenhagen: The Nordic Cochrane Centre, The Cochrane Collaboration, 2014. [computer program].
 40. Mueller PS, Montori VM, Bassler D, Koenig BA, Guyatt GH. Ethical issues in stopping randomized trials early because of apparent benefit. *Ann Intern Med.* 2007;146(June (12)):878–881.
 41. GRADEpro GDT: GRADEpro. Guideline Development Tool [computer program]. McMaster University, 2015 (developed by Evidence Prime, Inc.).
 42. Chiu H, Ada L, Lee H. Upper limb training using Wii Sports Resort™ for children with hemiplegic cerebral palsy: A randomized, single-blind trial. *Clin Rehabil.* 2014;28(10):1015–1024.
 43. Reid DT, Campbell K. The use of virtual reality with children with cerebral palsy: a pilot randomized trial. *Ther Recreation J.* 2006;40(4):255–268.
 44. Rostami HR, Arastoo AA, Nejad SJ, Mahany MK, Malamiri RA, Goharpey S. Effects of modified constraint-induced movement therapy in virtual environment on upper-limb function in children with spastic hemiparetic cerebral palsy: A randomised controlled trial. *NeuroRehabilitation.* 2012;31(4):357–365.
 45. Sharan D, Ajeesh PS, Rameshkumar R, Mathankumar M, Paulina RJ, Manjula M. Virtual reality based therapy for post operative rehabilitation of children with cerebral palsy. *Work.* 2012;41(1):3612–3615.
 46. Acar G., Altun G.P., Yurdalan S., MG P. Efficacy of neurodevelopmental treatment combined with the Nintendo(R) Wii in patients with cerebral palsy of physical therapy science. 2016;28(3):774-780.
 47. Bedair R., Talawy H., Shoukry K., RE A. Impact of virtual reality games as an adjunct treatment tool on upper extremity function of spastic hemiplegic children. *Int J Pharmtech Res.* 2016;9(6):1-8.
 48. El-Shamy SM, El-Banna MF. Effect of Wii training on hand function in children with hemiplegic cerebral palsy. *Physiother Theory Pract.* 2018;24(May (24)):1–7.
 49. Jannink MJ, van der Wilden GJ, Navis DW, Visser G, Gussinklo J, Ijzerman M. A low-cost video game applied for training of upper extremity function in children with cerebral palsy: a pilot study. *Cyberpsychol Behav.* 2008;11(1):27–32.
 50. Sajjan JE, John JA, Grace P, Sabu SS, Tharion G. Wii-based interactive video games as a supplement to conventional therapy for rehabilitation of children with cerebral palsy: A pilot, randomized controlled trial. *Dev Neurorehabil.* 2017;20(6):361–367.
 51. AlSaif AA, Alsenany S. Effects of interactive games on motor performance in children with spastic cerebral palsy. *J Phys Ther Sci.* 2015;27(6):2001–2003.
 52. James S, Ziviani J, Ware RS, Boyd RN. Randomized controlled trial of web-based multimodal therapy for unilateral cerebral palsy to improve occupational performance. *Dev Med Child Neurol.* 2015;57(6):530–538.
 53. Preston N, Weightman A, Gallagher J, et al. A pilot single-blind multicentre randomized controlled trial to evaluate the potential benefits of computer-assisted arm rehabilitation gaming technology on the arm function of children with spastic cerebral palsy. *Clin Rehabil.* 2016;30(10):1004–1015.
 54. Ren K, Gong XM, Zhang R, Chen XH. Effects of virtual reality training on limb movement in children with spastic diplegia cerebral palsy. *Zhongguo Dang Dai Er Ke Za Zhi.* 2016;18(10):975–979.

55. Cho C, Hwang W, Hwang S, Chung Y. Treadmill training with virtual reality improves gait, balance, and muscle strength in children with cerebral palsy. *Tohoku J Exp Med*. 2016;238(3):213–218.
56. Salem Y, Gropack SJ, Coffin D, Godwin EM. Effectiveness of a low-cost virtual reality system for children with developmental delay: a preliminary randomised single-blind controlled trial. *Physiotherapy*. 2012;98(3):189–195.
57. Mitchell LE, Ziviani J, Boyd RN. A randomized controlled trial of web-based training to increase activity in children with cerebral palsy. *Dev Med Child Neurol*. 2016;58(7):767–773.
58. Urgen MS, Türkan A, Mintaze KG, Özge Ç, Zehra G, Emine ST. Investigation of the effects of the Nintendo®Wii-Fit training on balance and advanced motor performance in children with spastic hemiplegic cerebral palsy: A Randomized Controlled Trial. *Int J Rehabil Res*. 2016;5(4):146–157.
59. Chen C.L., Hong W.H., Cheng H.Y., Liaw M.Y., Chung C.Y., CY. C. Muscle strength enhancement following home-based virtual cycling training in ambulatory children with cerebral palsy. *Res Dev Disabil*. Jul-Aug 2012;33(4):1087-1094.
60. Arenas M.M., SC B. Efectividad de la plataforma Wii Fit en la mejoría del equilibrio y coordinación en pacientes con parálisis cerebral hemiparética. Ensayo clínico, controlado, randomizado y simple ciego. *Rehabilitación Integral*. 2014;9(1):17-25.
61. Ramstrand N, Lyngegård F. Can balance in children with cerebral palsy improve through use of an activity promoting computer game? *Technol Health Care*. 2012;20(6):501–510.
62. Tarakci D, Huseyinsinoglu BE, Tarakci E, Ozdincler AR. Effects of Nintendo Wii-Fit® video games on balance in children with mild cerebral palsy. *Pediatr Int*. 2016;58(10):1042–1050.
63. Atasavun U.S., G B. Effects of Nintendo Wii Training on Occupational Performance, Balance, and Daily Living Activities in Children with Spastic Hemiplegic Cerebral Palsy: A Single-Blind and Randomized Trial. *Games Health J*. Oct 5 2016;5(5):311-317.
64. Gatica-Rojas V, Mendez-Rebolledo G, Guzman-Munoz E, et al. Does Nintendo Wii Balance Board improve standing balance? A randomized controlled trial in children with cerebral palsy. *Eur J Phys Rehabil Med*. 2017;53(4):535–544.
65. Wade W, Porter D. Sitting playfully: does the use of a centre of gravity computer game controller influence the sitting ability of young people with cerebral palsy? *Disabil Rehabil Assist Technol*. 2012;7(2):122–129.
66. Klobucka S, Ziakova E, Klobucky R. The effect of virtual reality environment during robotic-assisted locomotor training on gross motor functions in patients with cerebral palsy. [Slovak]. *Cesk Neurol Neurochir*. 2013;76(6):702–711.
67. Akhutina T, Foreman N, Krichevets A, et al. Improving spatial functioning in children with cerebral palsy using computerized and traditional game tasks. *Disability and rehabilitation*. 2003;25(24):1361–1371.
68. Ritterband RA, Christensen MS, Nielsen JB. Twenty weeks of computer-training improves sense of agency in children with spastic cerebral palsy. *Res Dev Disabil*. 2012;33(July-August (4)):1227–1234.
69. Piovesana AM, Ross S, Lloyd O, et al. Randomized controlled trial of a web-based multi-modal therapy program for executive functioning in children and adolescents with unilateral cerebral palsy. *Disabil Rehabil*. 2017;39(21):2021–2028.
70. Harris K, Reid D. The influence of virtual reality play on children's motivation. *Can J Occup Ther*. 2005;72(1):21–29.
71. Zoccolillo L, Morelli D, Cincotti F, et al. Video-game based therapy performed by children with cerebral palsy: a cross-over randomized controlled trial and a cross-sectional quantitative measure of physical activity. *European Journal of Physical and Rehabilitation Medicine*. 2015;51(6):669–676.
72. Mirelman A, Maidan I, Deutsch JE. Virtual reality and motor imagery: Promising tools for assessment and therapy in Parkinson's disease. *Mov Disord*. 2013;28(11):1597–1608.
73. van Diest M, Lamoth CJC, Stegenga J, Verkerke GJ, Postema K. Exergaming for balance training of elderly: state of the art and future developments. *J Neuroeng Rehabil*. 2013;10(101):1–12.
74. Lange B., Koenig S., Chang Chien-Yen, et al. Designing informed game-based rehabilitation tasks leveraging advances in virtual reality. *Disabil Rehabil*. 2012/11/01 2012;34(22):1863-1870.
75. Damiano DL. Activity, activity, activity: rethinking our physical therapy approach to cerebral palsy. *Phys Ther*. 2006;86(11):1534–1540.
76. Lang CE, Macdonald JR, Reisman DS, et al. Observation of amounts of movement practice provided during stroke rehabilitation. *Arch Phys Med Rehabil*. 2009;90(10):1692–1698.
77. Chen YP, Lee SY, Howard AM. Effect of virtual reality on upper extremity function in children with cerebral palsy: a meta-analysis. *Pediatr Phys Ther*. 2014;26(3):289–300.
78. Longo E, de Campos AC, Palisano RJ. Let's make pediatric physical therapy a true evidence-based field! Can we count on you? *Braz J Phys Ther*. 2019;23(May-June (3)):187–188.
79. Bonnechere B, Jansen B, Omelina L, et al. Can serious games be incorporated with conventional treatment of children with cerebral palsy? *A review Research in Developmental Disabilities*. 2014;35(8):1899–1913.
80. Snider L, Majnemer A, Darsaklis V. Virtual reality as a therapeutic modality for children with cerebral palsy. *Dev Neurorehabil*. 2010;13(2):120–128.
81. Smith CM, Read JE, Bennie C, Hale LA, Milosavljevic S. Can non-immersive virtual reality improve physical outcomes of rehabilitation? *Phys Ther Rev*. 2012;17(1):1–15.
82. Moher D., Liberati A., Tetzlaff J., DG. A. Preferred reporting items for systematic reviews and meta-analyses: the PRISMA statement. *Ann Intern Med*. 2009;151(4):264-269, W264.
83. Dickersin K. How important is publication bias? A synthesis of available data. *AIDS Educ Prev*. 1997;9(February Suppl. (1)):15–21.
84. Egger M., Davey S.G., Schneider M., CE M. Bias in meta-analysis detected by a simple, graphical test. *BMJ*. 1997;315:629–634.
85. Moher D, Pham B, Jones A, et al. Does quality of reports of randomised trials affect estimates of intervention efficacy reported in meta-analyses? *Lancet*. 1998;352(9128):609–613.
86. Kamper SJ. Randomization: Linking Evidence to Practice. *JOSPT*. 2018;48(9):730–731.
87. Hoffmann TC, Glasziou PP, Boutron I, et al. Better reporting of interventions: template for intervention description and replication (TIDieR) checklist and guide. *British Medical Journal*. 2014;348(mar07.3):g1687.
88. Yamato TP, Maher CG, Saragiotto BT, Catley MJ, Moseley AM. Rasch analysis suggested that items from the Template for Intervention Description and Replication (TIDieR) checklist can be summed to create a score. *J Clin Epidemiol*. 2018;101:28–34.
89. Liberati Alessandro, Altman Douglas G, Tetzlaff Jennifer, Mulrow Cynthia, Gøtzsche Peter C, Ioannidis John P A, et al. The PRISMA statement for reporting systematic reviews and meta-analyses of studies that evaluate healthcare interventions. *explanation and elaboration BMJ*. 2009;339:b2700.
90. Williamson PR, Altman DG, Blazeby JM, et al. Developing core outcome sets for clinical trials: issues to consider. *Trials*. 2012;13:132 <https://doi.org/10.1186/1745-6215-13-132>.