



# Sensitivity of prehospital stroke scales for different intracranial large vessel occlusion locations

European Stroke Journal  
2021, Vol. 6(2) 194–204  
© European Stroke Organisation 2021



Article reuse guidelines:  
sagepub.com/journals-permissions  
DOI: 10.1177/23969873211015861  
journals.sagepub.com/home/eso



Martijne HC Duvekot<sup>1,2</sup> , Esmee Venema<sup>2,3</sup>,  
Hester F Lingsma<sup>3</sup>, Jonathan M Coutinho<sup>4</sup>,  
H Bart van der Worp<sup>5</sup> , Jeannette Hofmeijer<sup>6</sup>,  
Reinoud PH Bokkers<sup>7</sup>, Adriaan CGM van Es<sup>8</sup>,  
Aad van der Lugt<sup>9</sup>, Henk Kerkhoff<sup>1</sup>, Diederik WJ Dippel<sup>2</sup>,  
Bob Roozenbeek<sup>2,9</sup>; on behalf of the MR CLEAN  
Registry investigators

## Abstract

**Introduction:** Prehospital stroke scales have been proposed to identify stroke patients with a large vessel occlusion to allow direct transport to an intervention centre capable of endovascular treatment (EVT). It is unclear whether these scales are able to detect not only proximal, but also more distal treatable occlusions. Our aim was to assess the sensitivity of prehospital stroke scales for different EVT-eligible occlusion locations in the anterior circulation.

**Patients and methods:** The MR CLEAN Registry is a prospective, observational study in all centres that perform EVT in the Netherlands. We included adult patients with an anterior circulation stroke treated between March 2014 and November 2017. We used National Institutes of Health Stroke Scale scores at admission to reconstruct previously published prehospital stroke scales. We compared the sensitivity of each scale for different occlusion locations. Occlusions were assessed with CT angiography by an imaging core laboratory blinded to clinical findings.

**Results:** We included 3021 patients for the analysis of 14 scales. All scales had the highest sensitivity to detect internal carotid artery terminus occlusions (ranging from 0.21 to 0.97) and lowest for occlusions of the M2 segment (0.08 to 0.84, *p*-values < 0.001).

**Discussion and conclusion:** Although prehospital stroke scales are generally sensitive for proximal large vessel occlusions, they are less sensitive to detect more distal occlusions.

## Keywords

Stroke, endovascular thrombectomy, prehospital stroke scales

Date received: 4 December 2020; accepted: 14 April 2021

<sup>1</sup>Department of Neurology, Albert Schweitzer Hospital, Dordrecht, the Netherlands

<sup>2</sup>Department of Neurology, Erasmus MC University Medical Center, Rotterdam, the Netherlands

<sup>3</sup>Department of Public Health, Erasmus MC University Medical Center, Rotterdam, the Netherlands

<sup>4</sup>Department of Neurology, Amsterdam University Medical Centers, Amsterdam, the Netherlands

<sup>5</sup>Department of Neurology and Neurosurgery, University Medical Center Utrecht, Brain Center, Utrecht, the Netherlands

<sup>6</sup>Department of Neurology, Rijnstate Hospital, Arnhem, the Netherlands

<sup>7</sup>Department of Radiology, Medical Imaging Center, University Medical Center Groningen, University of Groningen, Groningen, the Netherlands

<sup>8</sup>Department of Radiology, Leiden University Medical Center, Leiden, the Netherlands

<sup>9</sup>Department of Radiology and Nuclear Medicine, Erasmus MC University Medical Center, Rotterdam, the Netherlands

## Corresponding author:

Martijne HC Duvekot, Departments of Neurology, Albert Schweitzer Hospital, Dordrecht, the Netherlands and Erasmus MC University Medical Center, Rotterdam, the Netherlands.

Email: m.h.c.duvekot@asz.nl

## Introduction

Because the effect of endovascular treatment (EVT) for ischaemic stroke is strongly time-dependent, it is important to optimise prehospital and in-hospital workflows to reduce unnecessary treatment delays.<sup>1–3</sup> Interhospital transfers are an important cause of treatment delay and are associated with worse functional outcome.<sup>4,5</sup> Prehospital stroke scales may be helpful for the selection of patients with a high likelihood of a large vessel occlusion (LVO), to bypass the primary stroke centre for direct transport to an intervention centre capable of EVT and thereby avoiding time-consuming interhospital transfers.

Numerous prehospital stroke scales have been published over the past few years.<sup>6–20</sup> These scales have been developed as short and simple clinical tools to identify stroke patients with an LVO. Most scales are derived from the National Institutes of Health Stroke Scale (NIHSS).<sup>21</sup> Patients with a proximal occlusion usually present with high NIHSS scores, but more distal occlusion locations may be associated with lower NIHSS scores.<sup>22,23</sup> The sensitivity of prehospital stroke scales in detecting different occlusion locations in LVO is unknown. Because all patients treated with EVT in the Netherlands are registered, we had the opportunity to explore this in a large dataset of patients treated with EVT. We aimed to assess and compare the sensitivity of prehospital stroke scales for the detection of occlusions in different locations in the anterior circulation in a representative cohort of EVT-eligible patients.

## Methods

### Study design

The MR CLEAN (Multicenter Randomized Clinical Trial of Endovascular Treatment for Acute Ischemic Stroke in the Netherlands) Registry is a national, prospective, open, multicentre, observational monitoring study for intervention centres that perform EVT in the Netherlands. We collected data from consecutive patients who underwent EVT in 18 hospitals. Details of the MR CLEAN Registry have been reported previously.<sup>24</sup>

### Prehospital stroke scales

We selected prehospital stroke scales from the literature and included scales that were developed to detect LVO in the anterior circulation. Scales were only included if a cut point was proposed in the original studies. Scales that could not be reproduced with NIHSS items or scales that contained unavailable variables were excluded.

### Study population

All patients with acute ischaemic stroke caused by an intracranial LVO, confirmed by CT angiography (CTA), who had at least a groin puncture as start of EVT, were registered in the MR CLEAN Registry. EVT was performed in all patients with an occlusion of the distal part of the ICA, the M1 or M2 segment of the middle cerebral artery, if treatment was possible within six hours after symptom onset, irrespective of the stroke severity. The only contra-indication was intracranial haemorrhage. Ischaemic stroke in the affected vascular territory in the six weeks prior to the current event was a relative contra-indication. For the purpose of our analysis, we included patients registered between March 16, 2014 and November 1, 2017. We used the following inclusion criteria: age  $\geq 18$  years, EVT performed in a centre that participated in the MR CLEAN trial, start of EVT within 6.5 hours after stroke onset, and a proximal intracranial occlusion in the anterior circulation (internal carotid artery (ICA), internal carotid artery terminus (ICA-T), middle cerebral artery (M1/M2)).<sup>24</sup> We excluded patients of whom CTA was not available. Standard stroke work-up after arrival in the hospital was rapid assessment of the patient, followed by non-contrast CT and CTA. If indicated, intravenous thrombolysis was initiated just prior or after the CTA. Patients who did not present primarily in an intervention centre were transferred for EVT. After transfer and prior to EVT, the NIHSS was assessed by a neurologist or neurology resident in the intervention centre.

### Imaging assessments

All imaging was adjudicated by an imaging core laboratory, whose members were informed about the side of the affected hemisphere. M1 occlusions located before or during the branching off of lenticulostriate arteries were defined as proximal M1 occlusions. M1 occlusions located after the branching off of lenticulostriate arteries were defined as distal M1 occlusions. The M2 segments were defined as the first post-bifurcation branches of the M1 segment. In case of multiple occlusions, the most proximal occlusion location was used for the analysis.

### Statistical analysis

Prehospital stroke scales were reconstructed with the NIHSS items assessed at baseline in the intervention centre. The scales were assessed as positive or negative, using the cut point proposed in the original publication. We calculated the sensitivity for the detection of LVO for each prehospital stroke scale, both stratified by occlusion location and for all occlusion locations

combined. For each prehospital stroke scale, the sensitivities for different occlusion locations were compared using Chi-square tests. Additionally, we plotted the sensitivity for all possible cut points of the prehospital stroke scales, stratified by occlusion location. Potential differences in sensitivity across prehospital stroke scales may be caused by variation in the included NIHSS items. Therefore, we calculated the percentage of patients in our cohort who had an abnormal score on each NIHSS item. All analyses were performed using R software version 3.6.1 and Rstudio version 1.0.153.

## Results

Fourteen prehospital stroke scales were available for our analysis (Table S1 supplemental material).<sup>6–20</sup> In total, 3637 patients were registered in the MR CLEAN Registry between March 16, 2014 and November 1, 2017. We excluded 616 patients who did not meet our inclusion criteria (Figure 1). Of the 3021 included patients, the median age was 72 years and 52% of the patients were men (Table 1). Most patients, 1333 of 3021 (44%) had a baseline NIHSS of 17 or higher, but 190 patients (6%) had a low baseline NIHSS, ranging from zero to four. The most common occlusion location was the distal M1 segment ( $n = 1026$ , 34%). The least common occlusion locations were the M2 segment ( $n = 462$ , 15%) and the intracranial ICA ( $n = 155$ , 5%).

For all scales, sensitivity was highest for ICA-T occlusions, with sensitivities ranging from 0.21 to 0.97 (Table 2). Sensitivities decreased for the more distal occlusion segments as well as for the intracranial ICA

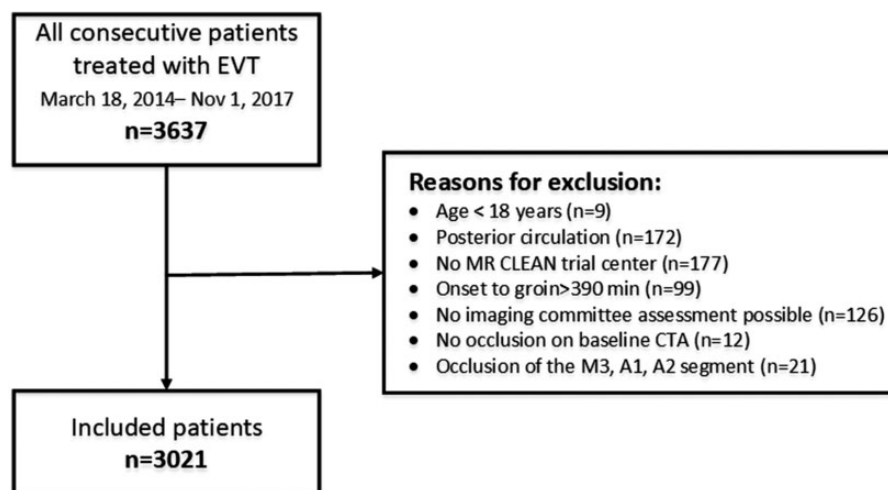
compared to ICA-T occlusions. M2 occlusions were least likely to be detected, with sensitivities ranging from 0.08 to 0.84 (Figure 2). The difference in sensitivity between occlusion locations was significant for all scales ( $p < 0.001$ ). The Emergency Medical Stroke Assessment (EMSA) and Gaze-Face-Arm-Speech-Time (G-FAST) had the highest sensitivity for all different occlusion locations. The Speech Arm Vision Eyes Scale (SAVE), 3-Item Stroke Scale (3I SS), and three-item NIHSS had the lowest sensitivity, for all different occlusion locations. The sensitivity of prehospital stroke scales to detect LVO for all occlusion locations together also varied widely, from 0.15 to 0.94. Sensitivity of the prehospital stroke scales for all possible cut points, stratified by occlusion location, are provided in Figures S1 to S5 of the supplement.

The NIHSS items motor arm, aphasia and dysarthria (combined in one item), and facial paresis were the most frequently affected items in our cohort (Table 3). The scales with the highest sensitivity mainly consisted of commonly affected items, whereas the scales with the lowest sensitivity consisted largely of the least affected items.

## Discussion

In this study, we demonstrated large differences in sensitivity of the prehospital stroke scales between different occlusion locations. In general, prehospital stroke scales are most sensitive to detect ICA-T occlusions and least sensitive to detect M2 occlusions.

The decrease in sensitivity of prehospital stroke scales for more distal occlusion locations can be explained by the cerebrovascular anatomy. Proximal



**Figure 1.** Selection of study population.

**Table 1.** Baseline characteristics of the 3021 included patients.

Characteristics	N = 3021	Missings
Age, median (IQR)	72 (61–81)	0
Male sex	1564 (52%)	0
Occlusion side: left hemisphere	1601 (53%)	0
Baseline NIHSS		0
0–4	190 (6%)	
5–8	323 (11%)	
9–12	466 (15%)	
13–16	709 (24%)	
≥17	1333 (44%)	
Systolic blood pressure, mean ± SD	150 ± 25	83 (2.7%)
Treatment with IVT	2309 (76%)	7 (0.2%)
Medical history		
Previous stroke	501 (17%)	27 (0.9%)
Atrial fibrillation	727 (24%)	40 (1.3%)
Diabetes mellitus	475 (16%)	23 (0.08%)
Myocardial infarction	416 (14%)	59 (2.0%)
Hypertension	1545 (51%)	66 (2.2%)
Pre-stroke mRS		65 (2.2%)
0–2	2612 (86%)	–
≥3	344 (11%)	–
Transferred to intervention centre	1650 (55%)	1 (0.03%)
Onset-to-door time in minutes, median (IQR)	132 (62–188)	146 (4.8%)
Door-to-CTA-time in minutes <sup>a</sup> , median (IQR)	15 (–64–27)	732 (24.2%)
Door-to-needle-time in minutes, median (IQR)	24 (18–33)	495 (16.4%)
Door-to-groin-time in minutes <sup>a</sup> , median (IQR)	60 (35–90)	267 (8.8%)
ASPECTS at baseline, median (IQR)	9 (8–10)	61 (2.2%)
Collateral score at baseline		86 (2.8%)
Grade 0	185 (6%)	–
Grade 1	1063 (35%)	–
Grade 2	1143 (38%)	–
Grade 3	544 (18%)	–
Level of occlusion on CTA <sup>b</sup>		0
Intracranial ICA	155 (5%)	–
ICA-T	640 (21%)	–
Proximal M1	738 (24%)	–
Distal M1	1026 (34%)	–
M2	462 (15%)	–

IQR: interquartile range; SD: standard deviation; NIHSS: National Institutes of Health Stroke Scale; IVT: intravenous thrombolysis; mRS: modified Rankin Scale; ASPECTS: Alberta Stroke Program Early CT Score; ICA: internal carotid artery.

Values are expressed in numbers (%) unless otherwise indicated.

<sup>a</sup>Door-to-CTA-time and door-to-groin-time were calculated using the door-time of the intervention centre.

<sup>b</sup>Percentages do not add up to 100% due to rounding.

occlusions affect a larger brain territory than distal occlusions, which generally results in more severe clinical symptoms. This general rule does not apply to the intracranial ICA, probably due to the collateral function of the circle of Willis.

The variation in sensitivity between different scales can be largely explained by the cut point that is used and the likelihood of its scale-items being affected. For example, the most sensitive scale, EMSA, has a low cut point of three out of six, containing the four most frequently affected items. The least sensitive scales, 3I SS

and the Three Item NIHSS were both constructed out of less frequently affected items, and they have relatively high cut points, which resulted in low sensitivity. In addition, some scales (e.g. 3I SS, Rapid Arterial occlusion Evaluation (RACE), G-FAST, Cincinnati Stroke Triage Assessment Tool (C-STAT), and NIHSS-8) were not primarily designed to detect isolated M2 occlusions.

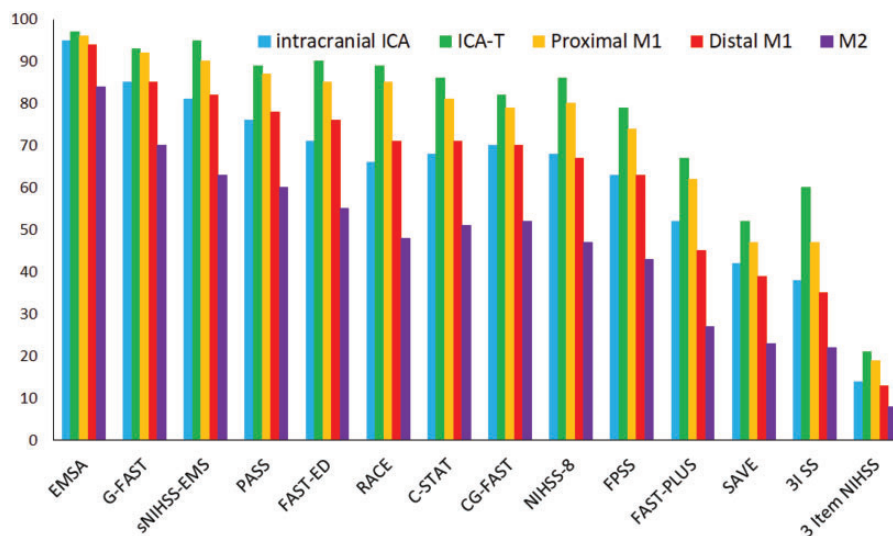
So far, no studies have focused on the sensitivity of prehospital stroke scales for different occlusion locations. Only one study briefly addressed the sensitivity

**Table 2.** Sensitivity (with 95% confidence interval) for the detection of LVO by 14 prehospital stroke scales in the full study cohort and stratified by occlusion location.

Prehospital stroke scale	Full cohort	Intracranial ICA	ICA-T	Proximal MI	Distal MI	M2	p value
EMSA $\geq 3$	0.94 (0.93–0.94)	0.95 (0.91–0.98)	0.97 (0.96–0.99)	0.96 (0.95–0.97)	0.94 (0.92–0.95)	0.84 (0.80–0.87)	<0.001
G-FAST $\geq 3$	0.86 (0.85–0.87)	0.85 (0.79–0.90)	0.93 (0.92–0.95)	0.92 (0.89–0.94)	0.85 (0.82–0.87)	0.70 (0.65–0.73)	<0.001
sNIHSS-EMS $\geq 6$	0.84 (0.68–0.72)	0.81 (0.75–0.87)	0.95 (0.93–0.97)	0.90 (0.88–0.93)	0.82 (0.80–0.85)	0.63 (0.59–0.68)	<0.001
PASS $\geq 2$	0.79 (0.78–0.81)	0.76 (0.69–0.82)	0.89 (0.87–0.91)	0.87 (0.84–0.89)	0.78 (0.75–0.80)	0.60 (0.55–0.64)	<0.001
FAST-ED $\geq 4$	0.78 (0.76–0.79)	0.71 (0.64–0.78)	0.90 (0.88–0.92)	0.85 (0.82–0.87)	0.76 (0.73–0.78)	0.55 (0.50–0.60)	<0.001
RACE $\geq 5$	0.75 (0.73–0.76)	0.66 (0.58–0.73)	0.89 (0.87–0.92)	0.85 (0.83–0.88)	0.71 (0.68–0.74)	0.48 (0.43–0.52)	<0.001
C-STAT $\geq 2$	0.73 (0.72–0.75)	0.68 (0.60–0.75)	0.86 (0.83–0.89)	0.81 (0.78–0.84)	0.71 (0.68–0.73)	0.51 (0.46–0.55)	<0.001
CG-FAST $\geq 4$	0.72 (0.71–0.74)	0.70 (0.62–0.77)	0.82 (0.79–0.85)	0.79 (0.76–0.82)	0.70 (0.68–0.73)	0.52 (0.47–0.57)	<0.001
NIHSS-8 $\geq 8$	0.71 (0.69–0.73)	0.68 (0.61–0.76)	0.86 (0.86–0.89)	0.80 (0.77–0.83)	0.67 (0.64–0.70)	0.47 (0.42–0.51)	<0.001
FPSS $\geq 5$	0.66 (0.64–0.68)	0.63 (0.55–0.70)	0.79 (0.75–0.82)	0.74 (0.71–0.77)	0.63 (0.60–0.66)	0.43 (0.38–0.47)	<0.001
FAST-PLUS positive <sup>a</sup>	0.52 (0.50–0.53)	0.52 (0.44–0.60)	0.67 (0.64–0.71)	0.62 (0.58–0.65)	0.45 (0.42–0.48)	0.27 (0.23–0.31)	<0.001
SAVE $\geq 4$	0.42 (0.40–0.43)	0.42 (0.34–0.50)	0.52 (0.48–0.56)	0.47 (0.44–0.51)	0.39 (0.36–0.42)	0.23 (0.18–0.26)	<0.001
3I SS $\geq 4$	0.42 (0.39–0.43)	0.38 (0.30–0.46)	0.60 (0.58–0.63)	0.47 (0.43–0.50)	0.35 (0.32–0.38)	0.22 (0.19–0.26)	<0.001
3 item NIHSS $\geq 5$	0.15 (0.14–0.17)	0.14 (0.08–0.19)	0.21 (0.18–0.24)	0.19 (0.17–0.22)	0.13 (0.11–0.15)	0.08 (0.05–0.10)	<0.001

ICA: internal carotid artery; EMSA: Emergency Medical Stroke Assessment; G-FAST: Gaze-Face-Arm-Speech-Time; sNIHSS-EMS: shortened NIH Stroke Scale for emergency medical services; PASS: Prehospital Acute Stroke Severity scale; FAST-ED: Field Assessment Stroke Triage for Emergency Destination; RACE: Rapid Arterial occlusion Evaluation; C-STAT: Cincinnati Stroke Triage Assessment Tool; CG-FAST: Conveniently-Grasped Field Assessment Stroke Triage; NIHSS-8: National Institutes of Health Stroke Scale-8; FPSS: Finnish Prehospital Stroke Scale; SAVE: Speech Arm Vision Eyes Scale; 3I SS: 3-Item Stroke Scale.

<sup>a</sup>FAST-PLUS is an algorithm and does not have a cut point.



**Figure 2.** Bar plots of the sensitivity per stroke scale, stratified by occlusion location.

of the FPSS per occlusion location and was in accordance with our findings.<sup>16</sup> One other study showed that in patients with a Field Assessment Stroke Triage for Emergency Destination (FAST-ED) < 4, a higher prevalence of M2 occlusions was found than in patients with FAST-ED  $\geq$  4.<sup>13</sup> A validation study of the RACE scale demonstrated M1 and M2 occlusions will be missed more often than ICA-T occlusions.<sup>25</sup> Furthermore, in two separate studies, subgroup analyses excluding M2 occlusions showed a higher sensitivity for the RACE scale, 3I SS and C-STAT.<sup>26,27</sup>

The MR CLEAN Registry is a large nationwide registry including all patients treated with EVT. All baseline CTAs were assessed by an experienced imaging core laboratory, providing accurate information about the occlusion location. Previously reported sensitivities of prehospital stroke scales could have been influenced by the distribution of the different occlusion locations within the validated cohort. Since our cohort is an unselected representation of patients treated with EVT, it reflects daily clinical practice. Nevertheless, we did not include undiagnosed LVO patients (because CTA was omitted) or untreated LVO patients. However, we expect that this bias will be limited because the Dutch national guideline recommends CTA in all ischaemic stroke patients.<sup>28</sup> Furthermore, due to the broad EVT treatment criteria in this guideline, almost all LVO patients are treated. Only sporadically, patients with low NIHSS, mostly in combination with distal occlusions such as the M2 segment, will not be treated. Therefore, the sensitivity to detect occlusions in the M2 segment might be slightly overestimated. However, even if we would have been able to include the small number of untreated LVO patients,

we expect the effect on our results to be limited. We cannot fully exclude between-centre differences in EVT indications. We did not account for this in the statistical analysis because potential centre differences might also be explained by differences in case-mix and this falls out of the scope of this study. In our opinion, the multicentre nature of the study is a strength, which allowed us to stratify for occlusion location in a large representative cohort of the Dutch EVT population.

Our study has some limitations. We reconstructed prehospital stroke scale scores based on the NIHSS performed by experienced physicians at the emergency department. Prehospital stroke scales should be validated in a prehospital setting by paramedics, as this is the setting in which the scales will be used. However, a prehospital study that acquires substantial numbers for every occlusion location is practically impossible to carry out. It would require a very large sample size.<sup>29</sup> Even though scale assessment by paramedics might differ from the assessment of experienced physicians, we expect the overall decay in sensitivity towards more distal occlusion locations will also apply in the prehospital assessments by paramedics. Additionally, there is some evidence that prehospital assessments are comparable with assessments by physicians, as demonstrated for the RACE and FAST-ED.<sup>30,31</sup> Because we did not include patients with an LVO in the anterior cerebral artery (A1/A2), we were not able to calculate the sensitivity for A1/A2 occlusions. However, isolated A1/A2 occlusions are uncommon and our cohort counted only 12 (0.3%) of those occlusions. Unfortunately, we could not include all published prehospital stroke scales, as some scales

**Table 3.** Overview of prehospital stroke scales.

Prehospital stroke scales	Cut point/ total score	Motor arm	90%	Language and dysarthria <sup>a</sup>	Facial paresis	Motor leg	Dysarthria	Gaze	LOC questions	Aphasia	Visual fields	Sensation	Extinction	LOC commands	LOC responsiveness
Abnormal score per item	-	91%	90%	87%	84%	68%	66%	59%	57%	55%	49%	49%	42%	21%	
EMSA	3/6	●	●	●	●	●	●	●	●	●	●	●	●	●	●
G-FAST	3/4	●	●	●	●	●	●	●	●	●	●	●	●	●	●
sNIHSS-EMS	6/29	●	●	●	●	●	●	●	●	●	●	●	●	●	●
PASS	2/3	●	●	●	●	●	●	●	●	●	●	●	●	●	●
FAST-ED	4/9	●	●	●	●	●	●	●	●	●	●	●	●	●	●
RACE	5/9	●	●	●	●	●	●	●	●	●	●	●	●	●	●
C-STAT	2/4	●	●	●	●	●	●	●	●	●	●	●	●	●	●
CG-FAST	4/5	●	●	●	●	●	●	●	●	●	●	●	●	●	●
NIHSS-8	8/24	●	●	●	●	●	●	●	●	●	●	●	●	●	●
FPSS	5/8	●	●	●	●	●	●	●	●	●	●	●	●	●	●
FAST-PLUS	<sup>b</sup> 5/8	●	●	●	●	●	●	●	●	●	●	●	●	●	●
SAVE	4/4	●	●	●	●	●	●	●	●	●	●	●	●	●	●
31 SS	4/6	●	●	●	●	●	●	●	●	●	●	●	●	●	●
3 Item NIHSS	5/8	●	●	●	●	●	●	●	●	●	●	●	●	●	●

EMSA: Emergency Medical Stroke Assessment; GFAST: Gaze-Face-Arm-Speech-Time; sNIHSS-EMS: shortened NIH Stroke Scale for emergency medical services; PASS: Prehospital Acute Stroke Severity scale; FAST-ED: Field Assessment Stroke Triage for Emergency Destination; RACE: Rapid Arterial Occlusion Evaluation; C-STAT: Cincinnati Stroke Triage Assessment Tool; CG-FAST: Conveniently-Grasped Field Assessment Stroke Triage; NIHSS-8: National Institutes of Health Stroke Scale-8; FPSS: Finnish Prehospital Stroke Scale; SAVE: Speech Arm Vision Eyes Scale; 31 SS: 3-Item Stroke Scale. Prehospital stroke scales are ordered based on their sensitivity in the full cohort, from high to low. Percentage of the abnormal score per item is the percentage of patients with a score > 0 for the corresponding NIHSS item. NIHSS items are ordered based on this percentage, from high to low.

<sup>a</sup>In most prehospital stroke scales, NIHSS item 9 (language) and 10 (speech) were merged.

<sup>b</sup>FAST-PLUS is an algorithm and does not have a cut point.

could not be derived from NIHSS items. For example, the commonly used Los Angeles Motor Scale (LAMS) contains the item “grip strength”, which is not incorporated in the NIHSS, and the ambulance clinical triage for acute stroke treatment (ACT-FAST) algorithm also contains several items that were unavailable.<sup>7,32</sup>

The design of the MR CLEAN Registry allowed us to assess the sensitivity of prehospital stroke scales for different occlusion locations. However, our study does not provide sufficient information to decide on the most accurate scale, because our cohort only consists of patients with LVO. This does not allow us to calculate other diagnostic test parameters of the prehospital stroke scales, such as specificity. The ideal prehospital stroke scale is based on a trade-off between sensitivity and specificity. Prospective, prehospital validation studies such as the recently published PRESTO study and a similar study provide a better insight in the prehospital stroke scale performance.<sup>33,34</sup> However, in these studies it was not possible to assess the sensitivity of different occlusion locations because of the relatively small numbers of LVO patients. Finally, since endovascular treatment possibilities are developing further, the added value of prehospital stroke scales to detect LVO patients in the delayed time window or to detect more distal occlusion locations needs to be investigated.

## Conclusions

The sensitivity of prehospital stroke scales varies widely between different occlusion locations. Our study demonstrates that prehospital stroke scales are most sensitive in detecting ICA-T occlusions and least sensitive in detecting M2 occlusions. Since the treatment of isolated M2 occlusions is considered effective and safe,<sup>22,23</sup> it is important to realise that a considerable proportion of treatable LVO patients will be missed.

## Declaration of conflicting interests

The author(s) declared the following potential conflicts of interest with respect to the research, authorship, and/or publication of this article: DD reports funding from the Dutch Heart Foundation, Brain Foundation Netherlands, The Netherlands Organisation for Health Research and Development, Health Holland Top Sector Life Sciences & Health, and unrestricted grants from Penumbra Inc., Stryker, Stryker European Operations BV, Medtronic, Thrombolytic Science, LLC and Cerenovus for research, all paid to institution. AvdL reports funding from Stryker. BvdW has received fees for consultation from Bayer, Boehringer Ingelheim, and LivaNova.

## Funding

The author(s) disclosed receipt of the following financial support for the research, authorship, and/or publication of this article: The MR CLEAN Registry was partly funded by the Applied Scientific Institute for Neuromodulation (Toegepast Wetenschappelijk Instituut voor Neuromodulatie), the Erasmus MC University Medical Center, Academic Medical Center Amsterdam, and the Maastricht University Medical Center.

## Ethical approval

The central medical ethics committee of the Erasmus MC University Medical Center Rotterdam, the Netherlands, evaluated the study protocol and granted permission to carry out the study as a registry (MEC-2014-235).

## Guarantor

BR.

## Contributorship

Conception or design of the work: MHCD, EV, HK, BR. Data acquisition: MHCD, RPHJB and ACGMvE. Data analysis: MHCD. Interpretation of data: MHCD, EV, HFL, HK, DWJD and BR. Writing of the manuscript: MHCD. Participation in patient enrolment: JMC, BvdW, JH, AvdL and DWJD. All authors have critically reviewed the manuscript and approved the final version.

## Acknowledgements

We would like to thank all MR CLEAN Registry Investigators for their assistance in this research.

## Executive committee

Diederik WJ Dippell; Aad van der Lugt<sup>2</sup>; Charles BLM Majoie<sup>3</sup>; Yvo BWEM Roos<sup>4</sup>; Robert J van Oostenbrugge<sup>5</sup>; Wim H van Zwam<sup>6</sup>; Jelis Boiten<sup>14</sup>; Jan Albert Vos<sup>8</sup>.

## Study coordinators

Ivo GH Jansen<sup>3</sup>; Maxim JHL Mulder<sup>1,2</sup>; Robert-Jan B Goldhoorn<sup>5,6</sup>; Kars CJ Compagne<sup>2</sup>; Manon Kappelhof<sup>3</sup>; Josje Brouwer<sup>4</sup>; Sanne J den Hartog<sup>1,2,40</sup>; Wouter H Hinsenveld<sup>5,6</sup>.

## Local principal investigators

Diederik WJ Dippell; Bob Roozenbeek<sup>1</sup>; Aad van der Lugt<sup>2</sup>; Adriaan CGM van Es<sup>2</sup>; Charles BLM Majoie<sup>3</sup>; Yvo BWEM Roos<sup>4</sup>; Bart J Emmer<sup>3</sup>; Jonathan M Coutinho<sup>4</sup>; Wouter J Schonewille<sup>7</sup>; Jan Albert Vos<sup>8</sup>; Marieke JH Wermer<sup>9</sup>; Marianne AA van Walderveen<sup>10</sup>; Julie Staals<sup>5</sup>; Robert J van Oostenbrugge<sup>5</sup>; Wim H van Zwam<sup>6</sup>; Jeannette Hofmeijer<sup>11</sup>; Jasper M Martens<sup>12</sup>; Geert J Lycklama à Nijeholt<sup>13</sup>; Jelis Boiten<sup>14</sup>; Sebastiaan F de Bruijn<sup>15</sup>; Lukas C van Dijk<sup>16</sup>; H Bart van der Worp<sup>17</sup>; Rob H Lo<sup>18</sup>; Ewoud J van Dijk<sup>19</sup>; Hieronymus D Boogaarts<sup>20</sup>; J de Vries<sup>22</sup>; Paul LM de Kort<sup>21</sup>; Julia van Tuijl<sup>21</sup>; Jo P Peluso<sup>26</sup>; Puck Fransen<sup>22</sup>; Jan SP van den Berg<sup>22</sup>; Boudewijn AAM van Hasselt<sup>23</sup>;



Leo AM Aerden<sup>24</sup>; René J Dallinga<sup>25</sup>; Maarten Uyttenboogaart<sup>28</sup>; Omid Eschgi<sup>29</sup>; Reinoud PH Bokkers<sup>29</sup>; Tobien HCML Schreuder<sup>30</sup>; Roel JJ Heijboer<sup>31</sup>; Koos Keizer<sup>32</sup>; Lonke SF Yo<sup>33</sup>; Heleen M den Hertog<sup>22</sup>; Tomas Bulut<sup>35</sup>; Paul JAM Brouwers<sup>34</sup>.

### Imaging assessment committee

Charles BLM Majoie<sup>3</sup>(chair); Wim H van Zwam<sup>6</sup>; Aad van der Lugt<sup>2</sup>; Geert J Lycklama à Nijeholt<sup>13</sup>; Marianne AA van Walderveen<sup>10</sup>; Marieke ES Sprengers<sup>3</sup>; Sjoerd FM Jenniskens<sup>27</sup>; René van den Berg<sup>3</sup>; Albert J Yoo<sup>38</sup>; Ludo FM Beenen<sup>3</sup>; Alida A Postma<sup>6</sup>; Stefan D Roosendaal<sup>3</sup>; Bas FW van der Kallen<sup>13</sup>; Ido R van den Wijngaard<sup>13</sup>; Adriaan CGM van Es<sup>2</sup>; Bart J Emmer<sup>3</sup>; Jasper M Martens<sup>12</sup>; Lonke SF Yo<sup>33</sup>; Jan Albert Vos<sup>8</sup>; Joost Bot<sup>36</sup>; Pieter-Jan van Doormaal<sup>2</sup>; Anton Meijer<sup>27</sup>; Elyas Ghariq<sup>13</sup>; Reinoud PH Bokkers<sup>29</sup>; Marc P van Proosdij<sup>37</sup>; G Menno Krietemeijer<sup>33</sup>; Jo P Peluso<sup>26</sup>; Hieronymus D Boogaarts<sup>20</sup>; Rob Lo<sup>18</sup>; Dick Gerrits<sup>35</sup>; Wouter Dinkelaar<sup>2</sup>Auke PA Appelman<sup>29</sup>; Bas Hammer<sup>16</sup>; Sjoert Pegge<sup>27</sup>; Anouk van der Hoorn<sup>29</sup>; Saman Vinke<sup>20</sup>.

### Writing committee

Diederik WJ Dippell (chair); Aad van der Lugt<sup>2</sup>; Charles BLM Majoie<sup>3</sup>; Yvo BWEM Roos<sup>4</sup>; Robert J van Oostenbrugge<sup>5</sup>; Wim H van Zwam<sup>6</sup>; Geert J Lycklama à Nijeholt<sup>13</sup>; Jelis Boiten<sup>14</sup>; Jan Albert Vos<sup>8</sup>; Wouter J Schonewille<sup>7</sup>; Jeannette Hofmeijer<sup>11</sup>; Jasper M Martens<sup>12</sup>; H Bart van der Worp<sup>17</sup>; Rob H Lo<sup>18</sup>.

### Adverse event committee

Robert J van Oostenbrugge<sup>5</sup> (chair); Jeannette Hofmeijer<sup>11</sup>; H Zwenneke Flach<sup>23</sup>.

### Trial methodologist

Hester F Lingsma<sup>40</sup>.

### Research nurses/local trial coordinators

Naziha el Ghannouti<sup>1</sup>; Martin Sterrenberg<sup>1</sup>; Wilma Pellikaan<sup>7</sup>; Rita Sprengers<sup>4</sup>; Marjan Elfrink<sup>11</sup>; Michelle Simons<sup>11</sup>; Marjolein Vossers<sup>12</sup>; Joke de Meris<sup>14</sup>; Tamara Vermeulen<sup>14</sup>; Annet Geerlings<sup>19</sup>; Gina van Vemde<sup>22</sup>; Tiny Simons<sup>30</sup>; Gert Messchendorp<sup>28</sup>; Nynke Nicolaij<sup>28</sup>; Hester Bongenaar<sup>32</sup>; Karin Bodde<sup>24</sup>; Sandra Kleijn<sup>34</sup>; Jasmijn Lodico<sup>34</sup>; Hanneke Droste<sup>34</sup>; Maureen Wollaert<sup>5</sup>; Sabrina Verheesen<sup>5</sup>; D Jeurissen<sup>5</sup>; Erna Bos<sup>9</sup>; Yvonne Drabbe<sup>15</sup>; Michelle Sandiman<sup>15</sup>; Noline Aaldering<sup>11</sup>; Berber Zweedijk<sup>17</sup>; Jocova Vervoort<sup>21</sup>; Eva Ponjee<sup>22</sup>; Sharon Romviel<sup>19</sup>; Karin Kanselaar<sup>19</sup>; Denn Barning<sup>10</sup>.

### PhD/medical students

Esme Venema<sup>40</sup>; Vicky Chalos<sup>140</sup>; Ralph R Geuskens<sup>3</sup>; Tim van Straaten<sup>19</sup>; Saliha Ergezen<sup>1</sup>; Roger RM Harmsma<sup>1</sup>; Daan Muijres<sup>1</sup>; Anouk de Jong<sup>1</sup>; Olvert A Berkhemer<sup>136</sup>; Anna MM Boers<sup>339</sup>; J Huguet<sup>3</sup>; PFC Groot<sup>3</sup>; Marieke A Mens<sup>3</sup>; Katinka R van Kranendonk<sup>3</sup>; Kilian M Treurniet<sup>3</sup>; Manon L Tolhuisen<sup>339</sup>; Heitor

Alves<sup>3</sup>; Annick J Weterings<sup>3</sup>; Eleonora LF Kirkels<sup>3</sup>; Eva JHF Voogd<sup>11</sup>; Lieve M Schupp<sup>3</sup>; Sabine L Collette<sup>2829</sup>; Adrien ED Groot<sup>4</sup>; Natalie E LeCouffe<sup>4</sup>; Praneeta R Konduri<sup>39</sup>; Haryadi Prasetya<sup>39</sup>; Nerea Arrarte-Terrerros<sup>39</sup>; Lucas A Ramos<sup>39</sup>.

### List of affiliations

Department of Neurology<sup>1</sup>, Radiology<sup>2</sup>, Public Health<sup>40</sup>, Erasmus MC University Medical Center;

Department of Radiology and Nuclear Medicine<sup>3</sup>, Neurology<sup>4</sup>, Biomedical Engineering & Physics<sup>39</sup>, Amsterdam UMC, University of Amsterdam, Amsterdam;

Department of Neurology<sup>5</sup>, Radiology<sup>6</sup>, Maastricht University Medical Center and Cardiovascular Research Institute Maastricht (CARIM);

Department of Neurology<sup>7</sup>, Radiology<sup>8</sup>, Sint Antonius Hospital, Nieuwegein;

Department of Neurology<sup>9</sup>, Radiology<sup>10</sup>, Leiden University Medical Center;

Department of Neurology<sup>11</sup>, Radiology<sup>12</sup>, Rijnstate Hospital, Arnhem;

Department of Radiology<sup>13</sup>, Neurology<sup>14</sup>, Haaglanden MC, the Hague;

Department of Neurology<sup>15</sup>, Radiology<sup>16</sup>, HAGA Hospital, the Hague;

Department of Neurology<sup>17</sup>, Radiology<sup>18</sup>, University Medical Center Utrecht;

Department of Neurology<sup>19</sup>, Neurosurgery<sup>20</sup>, Radiology<sup>27</sup>, Radboud University Medical Center, Nijmegen;

Department of Neurology<sup>21</sup>, Radiology<sup>26</sup>, Elisabeth-TweeSteden ziekenhuis, Tilburg;

Department of Neurology<sup>22</sup>, Radiology<sup>23</sup>, Isala Klinieken, Zwolle;

Department of Neurology<sup>24</sup>, Radiology<sup>25</sup>, Reinier de Graaf Gasthuis, Delft;

Department of Neurology<sup>28</sup>, Radiology<sup>29</sup>, University Medical Center Groningen;

Department of Neurology<sup>30</sup>, Radiology<sup>31</sup>, Atrium Medical Center, Heerlen;

Department of Neurology<sup>32</sup>, Radiology<sup>33</sup>, Catharina Hospital, Eindhoven;

Department of Neurology<sup>34</sup>, Radiology<sup>35</sup>, Medical Spectrum Twente, Enschede;

Department of Radiology<sup>36</sup>, Amsterdam UMC, Vrije Universiteit van Amsterdam, Amsterdam;

Department of Radiology<sup>37</sup>, Noordwest Ziekenhuisgroep, Alkmaar;


Department of Radiology<sup>38</sup>, Texas Stroke Institute, Texas, United States of America.

### Data availability statement

In compliance with the General Data Protection Regulation, source data are not available for other researchers. Information about analytic methods, study materials and scripts of the statistical analyses are available from the corresponding author on reasonable request.

**ORCID iDs**

Martijne HC Duvekot  <https://orcid.org/0000-0003-0027-3669>

H Bart van der Worp  <https://orcid.org/0000-0001-9891-2136>

**Supplemental material**

Supplemental material for this article is available online.

**References**

- Saver JL, Goyal M, van der Lugt A, HERMES Collaborators, et al. Time to treatment with endovascular thrombectomy and outcomes from ischemic stroke: a meta-analysis. *JAMA* 2016; 316: 1279–1288.
- Menon BK, Xu H, Cox M, et al. Components and trends in door to treatment times for endovascular therapy in get with the guidelines-stroke hospitals. *Circulation* 2019; 139: 169–179.
- Janssen PM, Venema E and Dippel DWJ. Effect of workflow improvements in endovascular stroke treatment. *Stroke* 2019; 50: 665–674.
- Venema E, Groot AE, Lingsma HF, et al; for the MR CLEAN Registry Investigators. Effect of interhospital transfer on endovascular treatment for acute ischemic stroke. *Stroke* 2019; 50: 923–930.
- Froehler MT, Saver JL, Zaidat OO, et al. Interhospital transfer before thrombectomy is associated with delayed treatment and worse outcome in the STRATIS registry (systematic evaluation of patients treated with neurothrombectomy devices for acute ischemic stroke). *Circulation* 2017; 136: 2311–2321.
- Perez de la Ossa N, Carrera D, Gorchs M, et al. Design and validation of a prehospital stroke scale to predict large arterial occlusion: the rapid arterial occlusion evaluation scale. *Stroke* 2014; 45: 87–91.
- Nazliel B, Starkman S, Liebeskind DS, et al. A brief prehospital stroke severity scale identifies ischemic stroke patients harboring persisting large arterial occlusions. *Stroke* 2008; 39: 2264–2267.
- Singer OC, Dvorak F, Du Mesnil de Rochemont R, et al. A simple 3-item stroke scale: comparison with the National Institutes of Health Stroke Scale and prediction of middle cerebral artery occlusion. *Stroke* 2005; 36: 773–776.
- Katz BS, McMullan JT, Sucharew H, et al. Design and validation of a prehospital scale to predict stroke severity: Cincinnati Prehospital Stroke Severity Scale. *Stroke* 2015; 46: 1508–1512.
- Scheitz JF, Abdul-Rahim AH, MacIsaac RL, et al; SITS Scientific Committee. Clinical selection strategies to identify ischemic stroke patients with large anterior vessel occlusion: results from SITS-ISTR (Safe Implementation of Thrombolysis in Stroke International Stroke Thrombolysis Registry). *Stroke* 2017; 48: 290–297.
- Demeestere J, Garcia-Esperon C, Lin L, et al. Validation of the National Institutes of Health Stroke Scale-8 to detect large vessel occlusion in ischemic stroke. *J Stroke Cerebrovasc Dis* 2017; 26: 1419–1426.
- Purrucker JC, Hartig F, Richter H, et al. Design and validation of a clinical scale for prehospital stroke recognition, severity grading and prediction of large vessel occlusion: the shortened NIH Stroke Scale for emergency medical services. *BMJ Open* 2017; 7: e016893.
- Lima FO, Silva GS, Furie KL, et al. Field assessment stroke triage for emergency destination: a simple and accurate prehospital scale to detect large vessel occlusion strokes. *Stroke* 2016; 47: 1997–2002.
- Hastrup S, Damgaard D, Johnsen SP, et al. Prehospital acute stroke severity scale to predict large artery occlusion: design and comparison with other scales. *Stroke* 2016; 47: 1772–1776.
- Václavík D, Bar M, Klečka L, et al. Prehospital stroke scale (FAST pLUS test) predicts patients with intracranial large vessel occlusion. *Brain Behav* 2018; 8: e01087.
- Ollikainen JP, Janhunen HV, Tynkkynen JA, et al. The Finnish Prehospital Stroke Scale detects thrombectomy and thrombolysis candidates – a propensity score-matched study. *J Stroke Cerebrovasc Dis* 2018; 27: 771–777.
- Gropen TI, Boehme A, Martin-Schild S, et al. Derivation and validation of the emergency medical stroke assessment and comparison of large vessel occlusion scales. *J Stroke Cerebrovasc Dis* 2018; 27: 806–815.
- Keenan KJ and Smith WS. The speech arm vision eyes (save) scale predicts large vessel occlusion stroke as well as more complicated scales. *J Neurointerv Surg* 2018; 11: 659–663.
- Zuckerman SL, Sivaganesan A, Zhang C, et al. Maximizing efficiency and diagnostic accuracy triage of acute stroke patients: a case-control study. *Interv Neuroradiol* 2016; 22: 304–309.
- Gong X, Chen Z, Shi F, et al. Conveniently-grasped field assessment stroke triage (CG-FAST): a modified scale to detect large vessel occlusion stroke. *Front Neurol* 2019; 10: 390.
- Smith EE, Kent DM, Bulsara KR, et al; American Heart Association Stroke Council. Accuracy of prediction instruments for diagnosing large vessel occlusion in individuals with suspected stroke: a systematic review for the 2018 guidelines for the early management of patients with acute ischemic stroke. *Stroke* 2018; 49: e111–e122.
- Bhagal P, Bucke P, AlMatter M, et al. A comparison of mechanical thrombectomy in the M1 and M2 segments of the middle cerebral artery: a review of 585 consecutive patients. *Intervent Neurol* 2017; 6: 191–198.
- Compagne KCJ, van der Sluijs PM, van den Wijngaard IR, et al; MR CLEAN Registry Investigators. Endovascular treatment: the role of dominant caliber M2 segment occlusion in ischemic stroke. *Stroke* 2019; 50: 419–427.
- Jansen IGH, Mulder M and Goldhoorn RB; investigators MCR. Endovascular treatment for acute ischaemic stroke in routine clinical practice: prospective, observational cohort study (MR CLEAN Registry). *BMJ* 2018; 360: k949.

25. Jumaa MA, Castonguay AC, Salahuddin H, et al. Long-term implementation of a prehospital severity scale for EMS triage of acute stroke: a real-world experience. *J NeuroInterv Surg* 2020; 12: 19–24.
26. Turc G, Maier B, Naggara O, et al. Clinical scales do not reliably identify acute ischemic stroke patients with large-artery occlusion. *Stroke* 2016; 47: 1466–1472.
27. Carrera D, Gorchs M, Querol M, et al. Revalidation of the RACE scale after its regional implementation in Catalonia: a triage tool for large vessel occlusion. *J Neurointerv Surg* 2019; 11: 751–756.
28. Dutch National Guidelines, [https://richtlijndatabase.nl/richtlijn/herseninfarct\\_en\\_hersenbloeding/reperfusie\\_therapie\\_voor\\_acute\\_herseninfarct/endovasculaire\\_trombectomie\\_evt\\_bij\\_herseninfarct.html](https://richtlijndatabase.nl/richtlijn/herseninfarct_en_hersenbloeding/reperfusie_therapie_voor_acute_herseninfarct/endovasculaire_trombectomie_evt_bij_herseninfarct.html) (accessed August 2020).
29. Zhao H, Coote S, Pesavento L, et al. Large vessel occlusion scales increase delivery to endovascular centers without excessive harm from misclassifications. *Stroke* 2017; 48: 568–573.
30. Guillory BC, Gupta AA, Cubeddu LX, et al. Can prehospital personnel accurately triage patients for large vessel occlusion strokes? *J Emerg Med* 2020; 58: 917–921.
31. Hackett CT, Rahangdale R, Protetch J, et al. Rapid arterial occlusion evaluation scale agreement between emergency medical services technicians and neurologists. *J Stroke Cerebrovasc Dis* 2020; 29: 104745.
32. Zhao H, Pesavento L, Coote S, et al. Ambulance clinical triage for acute stroke treatment: paramedic triage algorithm for large vessel occlusion. *Stroke* 2018; 49: 945–951.
33. Duvekot MHC, Venema E, Rozeman AD, et al; PRESTO investigators. Comparison of eight prehospital stroke scales to detect intracranial large-vessel occlusion in suspected stroke (PRESTO): a prospective observational study. *Lancet Neurol* 2021; 20: 213–221.
34. Nguyen TTM, van den Wijngaard IR, Bosch J, et al. Comparison of prehospital scales for predicting large anterior vessel occlusion in the ambulance setting. *JAMA Neurol* 2021; 78: 157–164.