

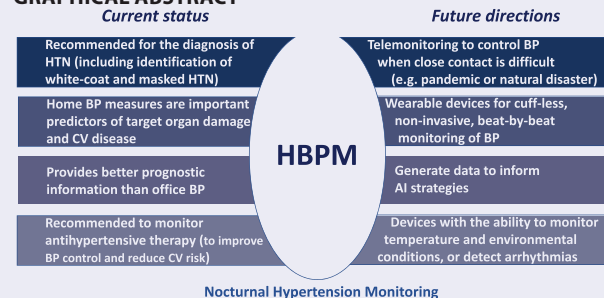
Home Blood Pressure Monitoring: Current Status and New Developments

Kazuomi Kario^{1,2,⊕}

Home blood pressure monitoring (HBPM) is a reliable, convenient, and less costly alternative to ambulatory blood pressure monitoring (ABPM) for the diagnosis and management of hypertension. Recognition and use of HBPM have dramatically increased over the last 20 years and current guidelines make strong recommendations for the use of both HBPM and ABPM in patients with hypertension. The accuracy and reliability of home blood pressure (BP) measurements require use of a validated device and standardized procedures, and good patient information and training. Key HBPM parameters include morning BP, evening BP, and the morning–evening difference. In addition, newer semi-automatic HBPM devices can also measure nighttime BP at fixed intervals during sleep. Advances in technology mean that HBPM devices could provide additional relevant data (e.g., environmental conditions) or determine BP in response to a specific trigger (e.g., hypoxia, increased heart rate). The value of HBPM is highlighted by a growing body of evidence showing that home BP is an important predictor of target organ damage, and cardiovascular disease (CVD)- and stroke-related morbidity and mortality, and provides better prognostic information than office BP. In addition, use of HBPM to monitor antihypertensive therapy can help to optimize reductions in BP, improve BP control, and reduce target organ damage and cardiovascular risk. Overall, HBPM should play a central role in the management of patients with hypertension, with the goal of identifying

increased risk and predicting the onset of CVD events, allowing proactive interventions to reduce risk and eliminate adverse outcomes.

GRAPHICAL ABSTRACT



AI, artificial intelligence BP, blood pressure; CV, cardiovascular; HBPM, home blood pressure monitoring; HTN, hypertension.

Keywords: blood pressure; cardiovascular disease; home blood pressure monitoring; hypertension; out-of-office blood pressure measurement; target organ damage

doi:10.1093/ajh/hpab017

HISTORY AND GUIDELINES

Home blood pressure monitoring (HBPM) uses similar technology to ambulatory blood pressure monitoring (ABPM), but allows patients to perform their own blood pressure (BP) measurements at a time and frequency that suits them. HBPM provides information on BP at specific times and under everyday conditions over long time periods. Key advantages of HBPM include its relatively widespread availability, the ability to take multiple daily readings over a long period of time, avoidance of white-coat reactions, the

ability to detect masked hypertension and BP variability, improved management of hypertension due to immediate feedback and patient involvement in their healthcare, and relatively low cost.^{1–3} Disadvantages include the requirement for patient education and training, measurement errors, and lack of funding in some healthcare settings.¹

Although ABPM is the gold standard out-of-office BP measurement, HBPM is recommended as a more practical and less expensive alternative, especially for long-term monitoring of treated patients with hypertension.^{4,5} Recognition and use of HBPM have increased dramatically

Correspondence: Kazuomi Kario (kkario@jichi.ac.jp).

Initially submitted November 12, 2020; date of first revision December 18, 2020; accepted for publication January 26, 2021; online publication February 9, 2021.

¹Division of Cardiovascular Medicine, Department of Medicine, Jichi Medical University School of Medicine, Shimotsuke, Tochigi, Japan; ²The Hypertension Cardiovascular Outcome Prevention and Evidence in Asia (HOPE Asia) Network, Tokyo, Japan.

© The Author(s) 2021. Published by Oxford University Press on behalf of American Journal of Hypertension, Ltd.

This is an Open Access article distributed under the terms of the Creative Commons Attribution-NonCommercial-NoDerivs licence (<https://creativecommons.org/licenses/by-nc-nd/4.0/>), which permits non-commercial reproduction and distribution of the work, in any medium, provided the original work is not altered or transformed in any way, and that the work is properly cited. For commercial re-use, please contact journals.permissions@oup.com

Table 1. Home blood pressure monitoring recommendations in major guideline and consensus documents

	Diagnosis of hypertension	Diagnostic BP threshold, mm Hg	Titration and monitoring of antihypertensive therapy	Target BP threshold, mm Hg
ACC/AHA 2017 ⁹	✓	≥130/80	✓	<130/80
ESC/ESH 2018 ¹⁰	✓	≥135/85	✓	≤130/80
ISH 2020 ⁸	✓	≥135/85	✓	<135/85
JSH 2019 ⁷	✓	≥135/85	✓	<125/75 (age <75 y) or <135/85 (age ≥75 y)
China 2019 ¹¹	✓	≥135/85	✓	<140/90 or <130/80 if tolerated or in high-risk pts
Taiwan 2015 ¹²	✓	≥135/85	✓	<140/90 or <130/80 if tolerated or in high-risk pts
South Korea 2018 ¹³	✓	≥135/85	✓	<140/90 (uncomplicated/elderly) or <130/80 (high-risk pts)
HOPE Asia Network ¹⁴	✓	≥135/85	✓	<135/85

Abbreviations: pts, patients; y, years.

over the last 20 years.⁶ Current hypertension guideline documents make strong recommendations for the use of out-of-office BP monitoring techniques, including HBPM and ABPM, for the diagnosis of hypertension and for the monitoring and management of antihypertensive therapy (Table 1).^{1,7–10}

Patients for whom out-of-office BP monitoring with HBPM is indicated include those with high office BP (to detect white-coat hypertension), high-normal office BP or normal office BP with hypertension-mediated organ damage or high cardiovascular (CV) risk (to detect masked hypertension), highly variable office BP or resistant hypertension, and for evaluating BP control (especially in high-risk patients).^{8,10,15} The Japanese guidelines state that where there is a discrepancy between office BP and home BP readings, a home BP-based diagnosis should take precedence.⁷

HOME BP MEASUREMENT: SCHEDULE, THRESHOLDS, AND APPROACHES

Good patient information and training, use of standardized procedures and use of a validated device are essential for ensuring the accuracy and reliability of home BP measurements (Figure 1).¹⁶ Patients need to be provided with general information about hypertension diagnosis and treatment, along with guidance on how to select an appropriate HBPM device and how to measure their own BP (ideally accompanied by a hands-on demonstration).^{1,5,16} It is important to remind patients not to overuse HBPM and not to modify their antihypertensive therapy without consulting their physician.¹ In addition to being validated, the HBPM device should use an upper-arm cuff oscillometric method (with an appropriately sized cuff) and be able to automatically store all readings; telehealth-equipped devices that can transmit readings to healthcare providers are preferable.^{1,5,16,17} The patient should have an empty bladder, and rest quietly in a seated position with the back supported and both feet on the floor for 2–5 minutes before taking home BP measurements. The cuff of the device should be

placed directly above the elbow and pulled taut, with the arm supported on a flat surface. Morning measurements should be made before breakfast and before taking any antihypertensive drugs, and evening measurements should be taken before going to bed. At least 2 readings should be taken, 1–2 minutes apart, and measurements should be made for at least 3 (preferably 7) consecutive days.^{1,14,16,18}

The key parameters provided by HBPM include morning BP, evening BP, and the morning–evening difference in BP. The relationship between values for these home BP measures and office BP is shown in Table 2. However, 1 limitation of standard HBPM is that measurements are only taken at 2 times during the day (morning and evening) in a relatively low-stress environment (i.e., the patient's home). Given that young adult workers often show increased work site BP, especially during stressful conditions, even when home BP is well controlled,^{19,20} there may be also a role for HBPM in the work place.

Although morning and evening BP are important from a prognostic perspective (see below), information on BP during everyday activities, such as work, and overnight is also helpful. Determination of BP during physical activity or home- or work-related psychological stress would require complementary use of ABPM, but semi-automatic HBPM devices are now available that measure BP at fixed intervals during sleep. These have been used successfully to monitor nighttime BP in a number of clinical trials.^{21–26} A 2-night schedule with 6 readings per night appears to be the minimum requirement for reliable assessment of nighttime home BP. This showed reasonable agreements with ABPM and acceptable associations with markers of preclinical organ damage.²⁷ The reliability of nocturnal HBPM appeared to be similar when HBPM was performed at intervals based on bedtime (e.g., 2, 3, or 4 hours after a chosen bedtime) or when fixed times were chosen (e.g., 2 AM, 3 AM, and 4 AM).²⁸

More sophisticated devices can monitor temperature as well as BP, providing data on potential factors associated with changes in BP, including environmental factors such as ambient temperature (Figure 2). These devices were used in clinical

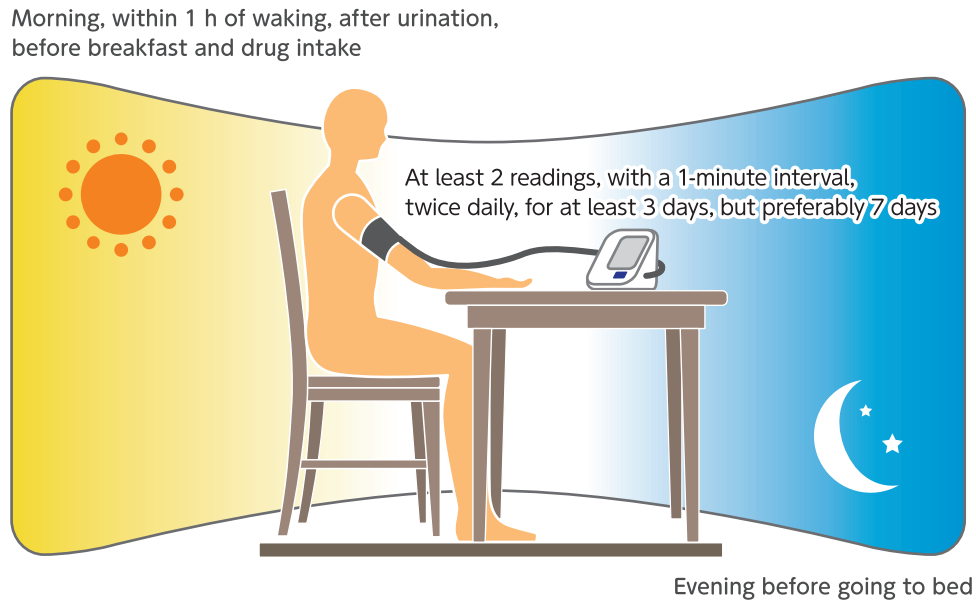


Figure 1. Key recommendations for ensuring accurate measurement of home blood pressure.^{14,16,18}

Table 2. Home blood pressure (BP) values (mm Hg) corresponding to clinic measurements (reproduced, with permission, from Kario *et al.*)¹⁴

Clinic BP (mm Hg)	Home BP (mm Hg)			
	Morning	Evening	Nighttime	ME average
120/80	120/80	120/80	100/65	120/80
130/80	130/80	130/80	110/65	130/80
140/90 ^a	135/85 ^a	135/85 ^a	120/70 ^a	135/85 ^a
160/100	145/90	145/90	140/85	145/90

Abbreviation: ME average, average of morning and evening BP values.

^aPathologic threshold.

trials enrolling patients with uncontrolled nocturnal hypertension,^{29,30} and may also have potential applications in clinical practice. Other approaches that allow assessment of nighttime BP include “trigger nighttime HBPM” where BP measurement is triggered by an episode of hypoxia or an elevation in heart rate, and beat-by-beat continuous surge BP monitoring.^{31,32} Combining individual time-series data with environmental factors is another novel approach to HBPM, which facilitates a more holistic approach to the measurement and management of BP.³³ Technological advances such as these will increase the applicability and usefulness of HBPM for a range of different hypertension patient phenotypes.

PROGNOSTIC VALUE OF HBPM

The value of HBPM is highlighted by data from multiple studies showing that home BP is an important predictor of target organ damage, and cardiovascular disease (CVD)- and stroke-related morbidity and mortality, and provides better prognostic information than office BP.^{35–41} Of these,

the first study to show that home BP was a better predictor of mortality than screening office BP was the Ohasama study, conducted in a general population in Japan.⁴⁰ The HONEST study also provides evidence that morning hypertension determined using HBPM is superior to office BP measurements for predicting the future occurrence of CV events.^{42,43} Furthermore, HBPM parameters have been shown to improve CV risk stratification in untreated patients with hypertension.⁴⁴

An overview of studies investigating the link between HBPM parameters and target organ damage/CV risk is provided in [Table 3](#). In addition, the sections below provide specific information relating to each key HBPM parameter.

Morning home BP

Even when office BP is normal, patients with masked hypertension and high morning systolic BP (SBP) have a high risk of CV events.⁴² When detected by HBPM or ABPM, the presence of masked hypertension and masked uncontrolled

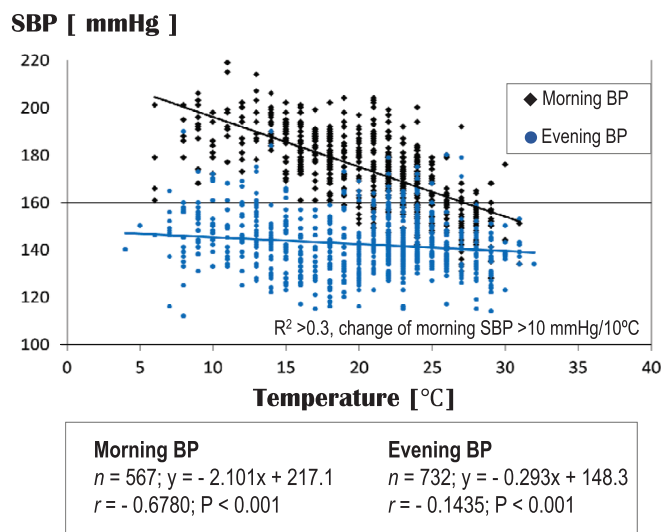


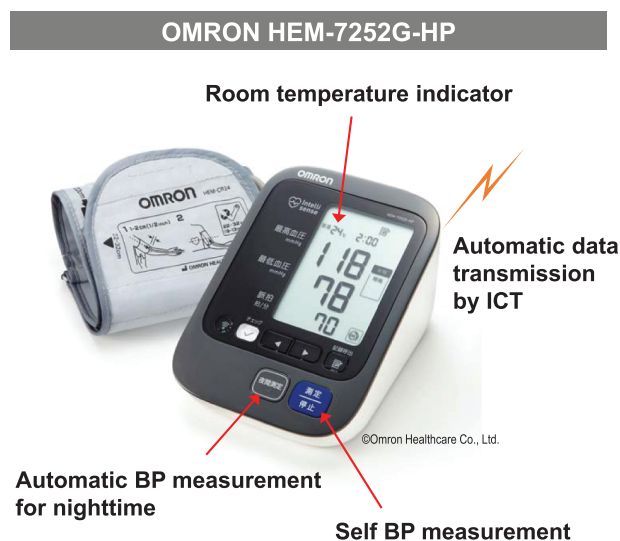
Figure 2. Thermosensitive morning hypertension documented using a home blood pressure (BP) monitoring device including a temperature sensor. Left: A case of thermosensitive hypertension [Measured from March 7, 2015 to December 18, 2015] (reproduced, with permission, from Kario).³⁴

hypertension is associated with poor clinical outcomes.⁵⁴ Morning home SBP ≥ 155 mm Hg has been shown to increase the risk of developing coronary artery disease by more than 6-fold, almost twice the risk associated with office SBP ≥ 160 mm Hg.⁴³ Morning home BP has also been shown to have better reproducibility than ambulatory BP measurements, and a stronger correlation with indices of vascular function.⁵⁵ Furthermore, morning home SBP improves the discrimination of incident stroke over and above traditional risk factors (including office BP) and was a better predictor of stroke risk than evening home BP (Figure 3).⁵⁰ This suggests that morning home SBP should be monitored and controlled to ensure optimal protection against CVD and stroke in clinical practice. Guideline recommendations note that morning home BP should be measured prior to antihypertensive drug dosing.^{7,9,10}

Nighttime home BP

Control of nocturnal BP is also an important part of CV risk management strategies,^{34,56} and nocturnal hypertension is common in hypertensive patients with comorbidities such as diabetes mellitus, chronic kidney disease, or obstructive sleep apnea. Until relatively recently, the only option for measuring nighttime BP was ABPM. However, new HBPM devices have been developed that provide another option for nighttime BP measurement.^{32,57} These have been shown to provide similar BP values to ABPM, and similar associations with target organ damage.⁵⁸

One of the first studies to highlight the importance of nighttime BP was the Ohasama study, which showed that nighttime BP had a better prognostic value than daytime BP.⁵⁹ In a Cox model including both nighttime and daytime SBP, only nighttime BP was a significant predictor of CV mortality risk over 10.8 years of follow-up.⁵⁹ Another recent study also documented the importance of nighttime BP levels and a riser pattern of nighttime BP, both of which were independently associated with the total CV event rate.⁶⁰ In the J-HOP study, home sleep



SBP values were correlated with several manifestations of CV target organ damage, including the left ventricular mass index, urinary albumin-creatinine ratio, arterial stiffness parameters, amino terminal pro B-type natriuretic peptide levels, and these associations persisted after adjustment for clinic SBP and morning and evening home SBP.^{22,24} Furthermore, the J-HOP Nocturnal BP study identified a significant increase in CV risk with each 10-mm Hg increase in nighttime home SBP.²⁶ In addition, the CV event risk associated with masked nocturnal hypertension was nearly as high as that associated with sustained hypertension (Figure 4).⁵²

Recent data highlight the importance of nocturnal hypertension measured using HBPM rather than ABPM. Data from the J-HOP study were used to compare the prognostic power of nocturnal hypertension detected by HBPM vs. ABPM for predicting future CV events.⁵³ Home nighttime SBP was significantly higher than ambulatory nighttime SBP (123.0 ± 14.6 vs. 120.3 ± 14.4 mm Hg, $P < 0.001$). In addition, nocturnal hypertension detected using HBPM (home SBP > 120 mm Hg) was significantly associated with an increased risk of future CV events, independent of office SBP (hazard ratio [95% confidence interval] for CAD + stroke, 1.78 [1.00–3.15] and for stroke only, 2.65 [1.14–6.20]), whereas no such association was seen for nocturnal hypertension defined and detected using ABPM (Figure 5).⁵³

Home BP variability

There are a variety of ways that BP variability can be defined, including beat-by-beat, daily, seasonal, and long term. Morning, evening, and nocturnal hypertension, the morning BP surge and nocturnal dipping are all examples of circadian variation in BP. There is good agreement between HBPM and ABPM for detection of patients with a nondipping nocturnal BP profile.⁶¹ HBPM can also be used to detect long-term and seasonal variations in BP.^{19,62–65} Seasonal- and temperature-related variations in BP could become increasingly relevant

Table 3. Prospective studies investigating the relationship between home blood pressure monitoring parameters and the occurrence of cardiovascular events

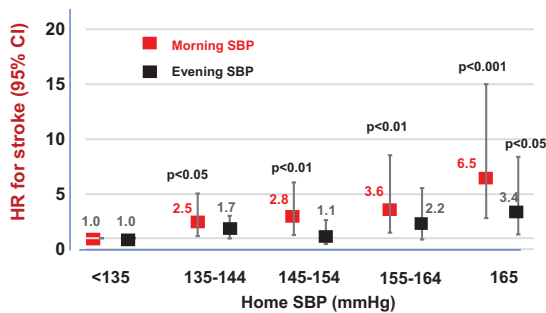
Study	Design and location	Population and follow-up	Outcomes
Ohasama study Ohkubo <i>et al.</i> ⁴⁰	Prospective cohort study (Japan)	N = 1,789 (age ≥40 y) Mean FU 6.6 y	Relative HR (95% CI) for CV mortality associated with a 1-mm Hg increase in home BP was 1.021 (1.001–1.041; <i>P</i> < 0.05)
Kahoku-cho study Okumiya <i>et al.</i> ⁴⁵	Prospective cohort study (Japan)	N = 1,186 (mean age 73.5 y) 4-y FU	Adjusted HR (95% CI) values for CV mortality associated with home SBP ≥135–144 and ≥145 mm Hg vs. 125–134 mm Hg (reference) were 2.3 (1.0–5.6; <i>P</i> < 0.05) and 2.1 (0.9–5.0; <i>P</i> < 0.1), respectively
Tsunoda <i>et al.</i> ³⁶	Longitudinal, cross-sectional study (Japan)	N = 209 (age 31–86 y) 5-y FU	Home BP was more closely related to target organ damage (especially LVMI) than office BP
SHEAF study Bobbie <i>et al.</i> ³⁷	Prospective cohort study (France)	N = 4,939 (mean age 70 ± 6.5 y) Mean FU 3.2 y	In treated pts with HTN, each 10-mm Hg increase in home SBP increased CV event risk by 17.2% (95% CI 11.0–23.8%) and each 5-mm Hg increase in home DBP increased CV event risk by 11.7% (95% CI 5.7–18.1%); similar increases in office BP were not associated with a significant increase in CV event risk
Ohasama study Asayama <i>et al.</i> ⁴⁶	Prospective cohort study (Japan)	N = 1,702 (age ≥40 y) Mean FU 11 y	Home BP-based JNC-7 classification was a stronger predictor of stroke risk than clinic BP-based classification
PAMELA study Sega <i>et al.</i> ⁴⁷	Prospective cohort study (Italy)	N = 2,051 (age 25–74 y) Mean FU 131 months	Office, home, and ambulatory BP values showed a significant exponential direct relationship with risk of CV or all-cause death, greater for SBP vs. DBP and for nighttime BP vs. daytime BP, but not better for home or ambulatory vs. office BP; however, the slope of the relationship was progressively greater from office to home and ambulatory BP. The HR for CV mortality with a 1-mm Hg increase in BP was 1.05 (95% CI 1.04–1.06; <i>P</i> < 0.0001) ^a
Fagard <i>et al.</i> ³⁸	Prospective cohort study (Belgium)	N = 391 (mean age 71 y) Mean FU 10.9 y	Adjusted relative HR for CV events associated with a 1 SD increase in home BP (22.9 mm Hg) was 1.32 (95% CI 1.06–1.64; <i>P</i> = 0.01); the prognostic value of home BP was better than that of office BP
Shimbo <i>et al.</i> ³⁵	Prospective cohort study (United States)	N = 163 (mean age 53.9 ± 14.5 y) 10-Week FU	In a multivariate regression analysis including age, sex, BMI, office BP, awake ambulatory BP and home BP, only age, sex, and home BP were significant predictors of LVMI
Niiranen <i>et al.</i> ³⁹	Prospective cohort study (Finland)	N = 2,081 (age 45–74 y) Median FU 6.8 y	Home SBP/DBP (HR 1.22/1.15, 95% CI 1.09–1.37/1.05–1.26), but not office SBP/DBP (HR 1.01/1.06, 95% CI 0.92–1.12/0.97–1.16), was a significant predictor of CV events; the only significant predictor of total mortality was home SBP (HR 1.11, 95% CI 1.01–1.23)
HOMED-BP study Asayama <i>et al.</i> ⁴⁸	Randomized intervention study (Japan)	N = 3,518 (mean age 59.6 y) Median FU 5.3 y	Adjusted HR (95% CI) for fatal or nonfatal CV events associated with a 1 SD (13.2 mm Hg) increase in home BP was 1.47 (1.23–1.75, <i>P</i> < 0.0001), irrespective of the antihypertensive used
J-HOP study Ishikawa <i>et al.</i> ²²	Prospective observational study (Japan)	N = 854 (mean 63.0 ± 10.6 y) Mean FU 4 y	Nighttime home SBP was more strongly related to the UACR and LVMI than nighttime ambulatory SBP (<i>P</i> < 0.001 for difference)
J-HOP study Kario <i>et al.</i> ²⁴	Prospective observational study (Japan)	N = 2,562 (mean 64.8 ± 10.9 y) Mean FU 4 y	Home sleep SBP values were correlated with markers of target organ damage (UACR, LVMI, baPWV, maximum carotid IMT, and plasma NT-proBNP levels (all <i>P</i> < 0.001); the associations between home sleep SBP and UACR, LVMI and baPWV remained significant after controlling for clinic SBP and home morning and evening SBPs (all <i>P</i> < 0.008)
Dallas Heart study Tientcheu <i>et al.</i> ⁴⁹	Prospective cohort study (United States)	N = 3,027 (age 18–65 y) Median FU 9 y	Adjusted HR (95% CI) for the risk of composite CV events in pts with masked hypertension diagnosed using HBPM vs. normotensive pts was 2.03 (1.36–3.03; <i>P</i> = 0.0005)
J-HOP study Hoshida <i>et al.</i> ⁵⁰	Prospective observational study (Japan)	N = 4,310 (mean age 65 y) Mean FU 4 y	Adjusted HR (95% CI) for the occurrence of stroke with each 10-mm Hg increase in home BP was 1.36 (1.19–1.56; <i>P</i> < 0.001) Morning home SBP improved the discrimination of incident stroke beyond traditional risk factors, including office BP

Table 3. Continued

Study	Design and location	Population and follow-up	Outcomes
Didima study Ntineri <i>et al.</i> ⁵¹	Cross-sectional population study (Greece)	N = 694 (mean age 54.4 ± 17.7 y) Mean FU 19.1 ± 1.4 y	Home BP was not a significant predictor of CVD events after adjustment for baseline risk factors Home SBP variability was a significant independent predictor of total mortality (adjusted HR 1.18 [95% CI 1.03–1.36] per 1 SD increase; P < 0.05)
J-HOP Nocturnal BP study Kario <i>et al.</i> ²⁶	Prospective cohort study (Japan)	N = 2,547 (mean age 63 ± 10.4 y) Mean FU 7.1 ± 3.8 y	Adjusted HR (95% CI) for CV events with a 10-mm Hg increase in nighttime home SBP was 1.201 (1.046–1.378)
J-HOP Nocturnal BP study Fujiwara <i>et al.</i> ⁵²	Prospective cohort study (Japan)	N = 2,547 (mean age 63 ± 10.4 y) Mean FU 7.1 ± 3.8 y	The cumulative incidence of CVD events was higher in pts with masked nocturnal HTN and sustained HTN (both based on HBPM) than in those with controlled BP Masked nocturnal HTN (adjusted HR [95% CI] 1.57 [1.00–2.46]) and sustained HTN (1.97 [1.263,06]) were associated with an increased risk of CVD events
J-HOP study Mokwatsi <i>et al.</i> ⁵³	Prospective observational study (Japan)	N = 1,005 (mean age 63.2 ± 10.8 y) Mean FU 7.6 ± 3.4 y	Adjusted HR (95% CI) for the risk of total CVD events (CAD + stroke) was 1.78 (1.00–3.15; P < 0.01) for HBPM-defined nocturnal HTN and 1.24 (0.75–2.06) for ABPM-defined nocturnal HTN Adjusted HR (95% CI) for the risk of stroke was 2.65 (1.14–6.20; P < 0.05) for HBPM-defined nocturnal HTN and 1.08 (0.55–2.15) for ABPM-defined nocturnal HTN

Abbreviations: APBM, ambulatory blood pressure monitoring; baPWV, brachial-ankle pulse wave velocity; BMI, body mass index; BP, blood pressure; CAD, coronary artery disease; CI, confidence interval; CV, cardiovascular; CVD, cardiovascular disease; DBP, diastolic BP; FU, follow-up; HBPM, home blood pressure monitoring; HF, heart failure; HR, hazard ratio; HTN, hypertension; IMT, intima-media thickness; JNC-7, Seventh Joint National Committee; LVMI, left ventricular mass index; MH, masked hypertension; NT-proBNP, amino terminal pro B-type natriuretic peptide; SBP, systolic blood pressure; UACR, urinary albumin-creatinine ratio; y, years.

^aCalculated from presented data of beta coefficient and SE in this study.



Event number/total number

Morning	12/1958	20/1044	16/687	11/342	15/247
Evening	35/2851	20/787	7/366	6/177	6/97

Figure 3. Association between home blood pressure and stroke risk in the J-HOP study (adapted, with permission, from Hoshide *et al.*).⁵⁰ Abbreviations: CI, confidence interval; HR, hazard ratio; SBP, systolic blood pressure.

in the current setting of increased climate change, and have the potential to change the epidemiology of hypertension.⁶⁶

Variability in home BP has been shown to be predictive of both stroke and CV events,^{67,68} and is a key component of the systemic hemodynamic atherothrombotic syndrome.⁶⁹ Even variability across just a few home BP measurements is able to predict the occurrence of total and nonfatal CV events as well as total mortality.⁶⁸ Day-to-day variability in home BP also predicts hypertensive target organ damage.^{70–75} Using data from the J-HOP study, several measures of short-term BP variability were found to be significantly associated with CVD risk

independently of home SBP, circulating B-type natriuretic peptide levels and the urinary albumin-creatinine ratio, with risk increasing as variability increased (Figure 6).⁷⁶

MANAGEMENT OF ANTIHYPERTENSIVE THERAPY

HBPM is a practical way to determine and monitor BP during the day-to-day management of hypertension, providing real-time information on antihypertensive treatment-related changes in BP. The ability of HBPM to provide repeated measures under standard conditions at specific times for an extended period of time makes it ideally suited for evaluating the efficacy of pharmacological antihypertensive therapy. Furthermore, using HBPM as part of the routine management of patients with hypertension might optimize reductions in BP, improve BP control, and reduce target organ damage and CVD risk. Another potential benefit of HBPM is that it facilitates education of patients about their disease, and its management and control, thus encouraging patient-centric care.⁷⁷

BP reduction and control

Nocturnal home BP monitoring documented significant reductions in nighttime home SBP during treatment with angiotensin receptor blocker-based antihypertensive therapy in Japanese patients with nocturnal hypertension.³⁰ HBPM also showed that morning home BP was significantly decreased in hypertensive patients during angiotensin receptor blocker-based therapy.^{42,78}

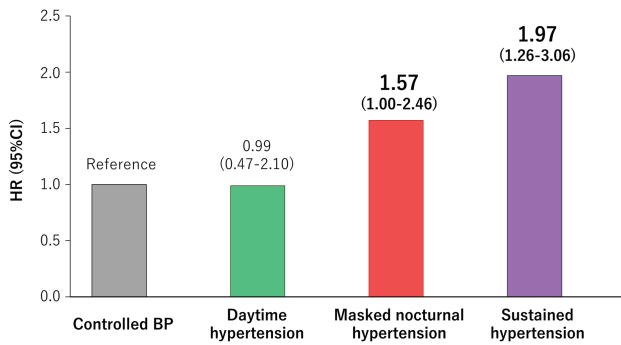


Figure 4. Risk of cardiovascular events based on type of hypertension (adapted, with permission, from Fujiwara *et al.*).⁵² Abbreviations: BP, blood pressure; CI, confidence interval; HR, hazard ratio.

Data from several meta-analyses show that use of HBPM during antihypertensive therapy is associated with significant decreases in SBP and DBP compared with usual care,^{79–82} and with reductions in antihypertensive medication use and therapeutic inertia, defined as unchanged medication despite elevated BP.⁸² Thus, HBPM plays a central role in a step-wise, personalized, optimal 24-hour BP control approach to the management of hypertension (Figure 7).³²

CV event risk

The association between HBPM parameters and risk of CVD events and mortality supports the use of this approach to monitoring BP and antihypertensive therapy in clinical practice.⁷⁷ The Hypertension Objective Treatment Based on Measurement by Electrical Devices of Blood Pressure (HOMED-BP) trial was the first study to evaluate outcomes in patients with hypertension whose antihypertensive therapy was guided by self-measured home BP.⁴⁸ The risk of CV death plus stroke and myocardial infarction (the primary endpoint) independently increased by 41% and 47% for each 1 SD increase in baseline and follow-up home SBP, respectively, irrespective of the antihypertensive used.⁴⁸ This suggests that reducing home BP is an important goal in patients with hypertension. In the HOMED-BP study, the 5-year risk of primary endpoint events was $\leq 1\%$ if the home SBP during treatment was ≤ 131.6 mm Hg,⁴⁸ which indicates that the guideline targets for home BP should be sufficient to reduce CVD risk.

DIGITAL MANAGEMENT OF HYPERTENSION AND NEW DEVELOPMENTS

The usefulness of HBPM can be enhanced by the addition of telemonitoring, whereby patients receive feedback from healthcare professionals based on BP readings sent electronically.⁸³ Incorporation of telemedicine approaches has been shown to significantly reduce both SBP and diastolic BP, and improve BP control, compared with usual care.^{84–87} In addition, telemedicine allows provision of effective healthcare services without close interaction, making it ideally suited to maintain effective disease management under pandemic or natural disaster conditions.⁸³ A telemedicine-based strategy

was successfully used to facilitate digital management of hypertension based on individual big data in the aftermath of the Great East Japan Earthquake in March 2011.⁸⁸ A web-based HBPM system enabled effective monitoring and strict control of home BP and minimized seasonal variations in BP over the months and years after the earthquake.⁸⁸ A comprehensive digital approach to the management of hypertension (the HERB system) is currently under evaluation in a randomized clinical study (the HERB-DH1 trial).⁸⁹ Adults with essential hypertension are being managed using the HERB system and standard lifestyle interventions or lifestyle interventions alone. The HERB system app includes an algorithm designed to promote lifestyle modifications in conjunction with medically validated nonpharmacological interventions. The primary endpoint is the change in 24-hour SBP from baseline to 12 weeks and the results are expected in early 2021.⁸⁹

Another promising strategy for HBPM is the use of wearable devices that allow cuff-less, noninvasive, beat-by-beat monitoring of BP. A number of these devices are currently in development by companies with a proven track record in the hypertension field. The development and use of wearable BP monitoring devices were recently reviewed in detail.⁹⁰ Several wearable devices have been validated using currently accepted clinical standards^{91,92} and one has also shown good agreement with ABPM.⁹³ These devices could also provide data on environmental conditions, and may also be useful for detecting arrhythmias, such as atrial fibrillation.⁹⁴ Further research and developments in this area could improve the accessibility and acceptability of HBPM.

The data provided by HBPM and other wearable hypertension monitoring devices could help inform artificial intelligence strategies to improve the diagnosis and treatment of hypertension. Several studies have investigated these approaches. One machine learning model based on data from 18,258 individuals was able to predict the development of hypertension in a general population.⁹⁵ Another artificial intelligence-based prediction model based on time-series BP data and related contextual information used multi-input multi-output deep neural networks to predict both mean BP and BP variability.⁹⁶ These approaches could identify patients at risk of developing hypertension, and then help predict BP values and variability to allow the most appropriate therapeutic strategy for each patient.

PERSPECTIVES

HBPM is an important and practical tool for the out-of-office measurement of BP. When performed according to current guidelines and using a validated device, it provides similar data to ABPM but is more widely available and convenient for patients. The introduction of wearable HBPM devices into clinical practice would be expected to make HBPM accessible to a larger number of patients, with the potential to replace ABPM as the out-of-office BP monitoring tool of choice. In addition, devices and systems with additional features such as nocturnal home BP monitoring, and monitoring of temperature and environmental factors alongside home BP, will facilitate a more comprehensive approach to the diagnosis

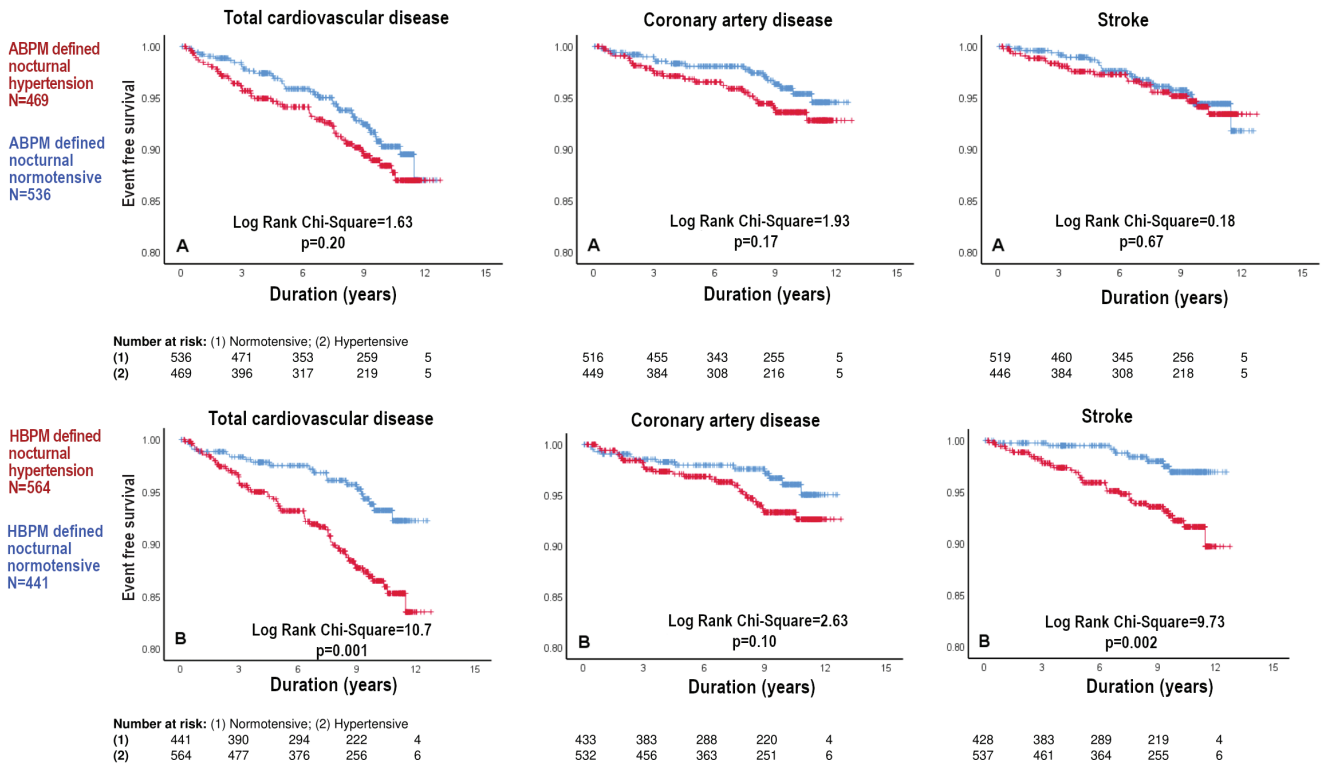


Figure 5. Association between nocturnal hypertension defined using ambulatory (a) vs. home (b) blood pressure and cardiovascular event risk in the J-HOP study (reproduced, with permission, from Mokwatsi *et al.*).⁵³

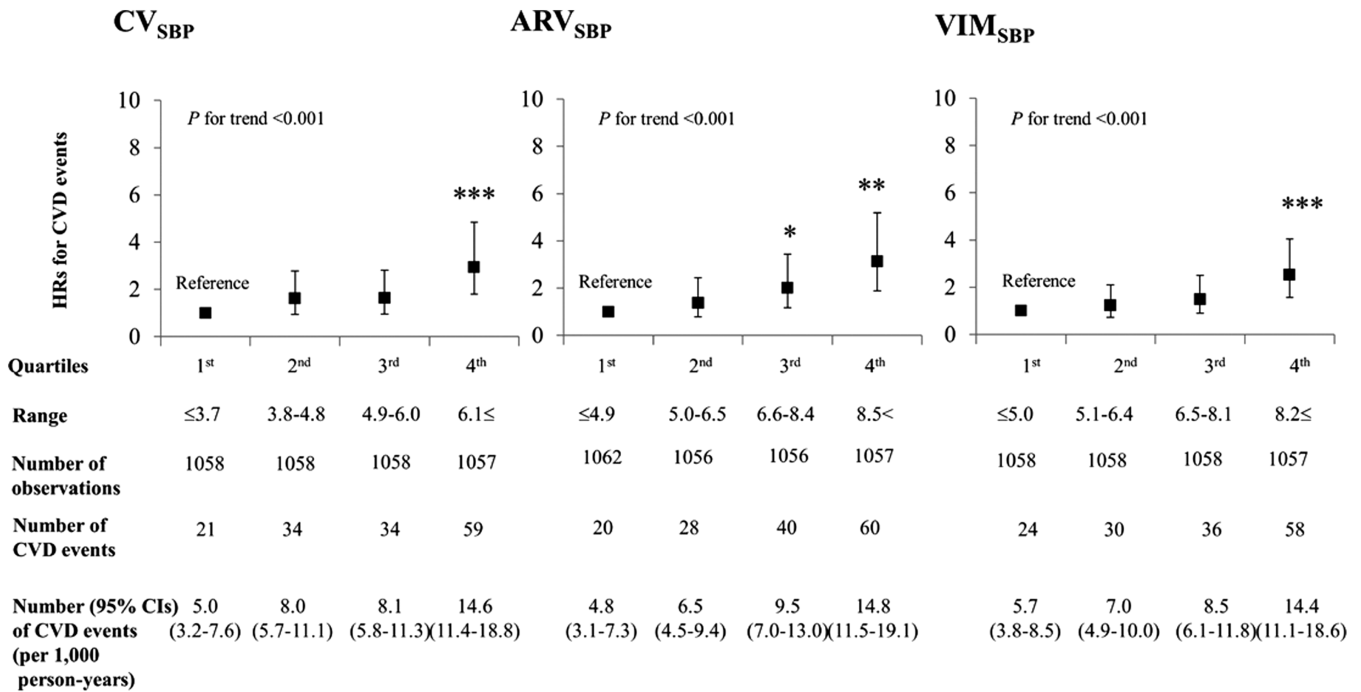


Figure 6. Cardiovascular disease risk by quartiles of home blood pressure variability (reproduced, with permission, from Hoshida *et al.*).⁷⁶ Abbreviations: ARV, average real variability; CI, confidence interval; CV, coefficient of variation; CVD, cardiovascular disease; SBP, systolic blood pressure; VIM, variability independent of the mean. **P* < 0.05 vs. reference group; ***P* < 0.01 vs. reference group; ****P* < 0.001 vs. reference group.

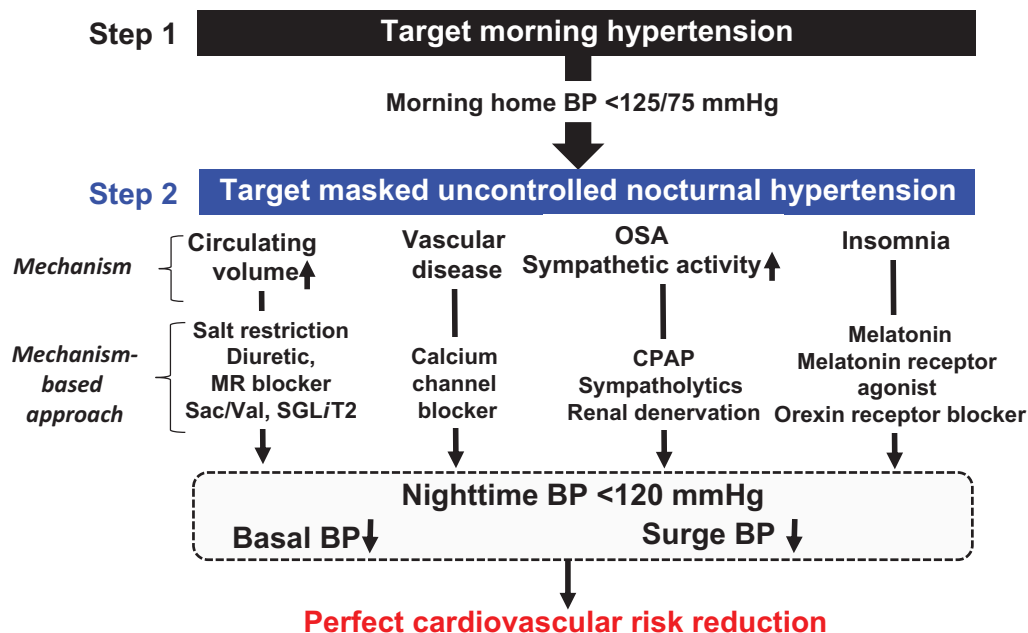


Figure 7. Mechanism-based STEpwise-personalized 24-hour blood pressure control approach (STEP24) (adapted, with permission, from Kario).³² Abbreviations: BP, blood pressure; CPAP, continuous positive airway pressure; MR, mineralocorticoid receptor; OSA, obstructive sleep apnea; Sac/Val, sacubitril/valsartan; SGLT2i, sodium glucose cotransporter 2 inhibitor.

and treatment of hypertension, and evaluation of CV risk. However, it is also important to note that current use and awareness of HBPM varies between regions and countries, and between specialists and general practitioners.⁹⁷ There are also a number of challenges that need to be overcome to facilitate the widespread implementation of an HBPM-based approach to hypertension management. These include a lack of awareness about the clinical value of HBPM, insufficient knowledge about HBPM best practices, and a lack of resources (both time and equipment).⁹⁷ Nevertheless, a substantial body of evidence for the prognostic value of home BP measurements highlight the importance of this approach to the management of CV risk factors in patients with hypertension. HBPM can play a key role in anticipation medicine strategies designed to identify increasing risk and predict the onset of CV events based on a series of data collected over time, allowing proactive interventions to reduce risk and eliminate events. Current developments and future advances in HBPM technologies, along with targeted training and education to support their use, will see HBPM continue to feature as an essential component of the continuum of care for hypertension, including diagnosis and both short- and long-term monitoring of the response to antihypertensive therapy.

ACKNOWLEDGMENTS

Medical writing assistance was provided by Nicola Ryan, independent medical writer, funded by Jichi Medical University.

DISCLOSURE

K. Kario has received research grants from Omron Healthcare and A&D.

REFERENCES

- Parati G, Stergiou GS, Asmar R, Bilo G, de Leeuw P, Imai Y, Kario K, Lurbe E, Manolis A, Mengden T, O'Brien E, Ohkubo T, Padfield P, Palatini P, Pickering TG, Redon J, Revera M, Ruilope LM, Shennan A, Staessen JA, Tisler A, Waeber B, Zanchetti A, Mancia G; ESH Working Group on Blood Pressure Monitoring. European Society of Hypertension practice guidelines for home blood pressure monitoring. *J Hum Hypertens* 2010; 24:779–785.
- Kario K. Home blood pressure-guided anticipation management of hypertension: effective to the gap between the guidelines and the individualized medicine. *Curr Hypertens Rev* 2019; 15:2–6.
- Kario K, Thijs L, Staessen JA. Blood pressure measurement and treatment decisions. *Circ Res* 2019; 124:990–1008.
- Parati G, Stergiou G, O'Brien E, Asmar R, Beilin L, Bilo G, Clement D, de la Sierra A, de Leeuw P, Dolan E, Fagard R, Graves J, Head GA, Imai Y, Kario K, Lurbe E, Mallion JM, Mancia G, Mengden T, Myers M, Ogedegbe G, Ohkubo T, Omboni S, Palatini P, Redon J, Ruilope LM, Shennan A, Staessen JA, vanMontfrans G, Verdecchia P, Waeber B, Wang J, Zanchetti A, Zhang Y; European Society of Hypertension Working Group on Blood Pressure Monitoring and Cardiovascular Variability. European Society of Hypertension practice guidelines for ambulatory blood pressure monitoring. *J Hypertens* 2014; 32:1359–1366.
- Muntner P, Shimbo D, Carey RM, Charleston JB, Gaillard T, Misra S, Myers MG, Ogedegbe G, Schwartz JE, Townsend RR, Urbina EM, Viera AJ, White WB, Wright JT Jr. Measurement of blood pressure in humans: a scientific statement from the American Heart Association. *Hypertension* 2019; 73:e35–e66.
- Kario K, Shimbo D, Hoshida S, Wang JG, Asayama K, Ohkubo T, Imai Y, McManus RJ, Kollias A, Niiranen TJ, Parati G, Williams B, Weber MA, Vongpatanasin W, Muntner P, Stergiou GS. Emergence of

- home blood pressure-guided management of hypertension based on global evidence. *Hypertension* 2019; 74:229–236.
7. Umemura S, Arima H, Arima S, Asayama K, Dohi Y, Hirooka Y, Horio T, Hoshide S, Ikeda S, Ishimitsu T, Ito M, Ito S, Iwashima Y, Kai H, Kamide K, Kanno Y, Kashihara N, Kawano Y, Kikuchi T, Kitamura K, Kitazono T, Kohara K, Kudo M, Kumagai H, Matsumura K, Matsuura H, Miura K, Mukoyama M, Nakamura S, Ohkubo T, Ohya Y, Okura T, Rakugi H, Saitoh S, Shibata H, Shimomura T, Suzuki H, Takahashi S, Tamura K, Tomiyama H, Tsuchihashi T, Ueda S, Uehara Y, Urata H, Hirawa N. The Japanese Society of Hypertension guidelines for the management of hypertension (JSH 2019). *Hypertens Res* 2019; 42:1235–1481.
 8. Unger T, Borghi C, Charchar F, Khan NA, Poulter NR, Prabhakaran D, Ramirez A, Schlaich M, Stergiou GS, Tomaszewski M, Wainford RD, Williams B, Schutte AE. 2020 International Society of Hypertension global hypertension practice guidelines. *Hypertension* 2020; 75:1334–1357.
 9. Whelton PK, Carey RM, Aronow WS, Casey DE Jr, Collins KJ, Dennison Himmelfarb C, DePalma SM, Gidding S, Jamerson KA, Jones DW, MacLaughlin EJ, Muntner P, Ovbigele B, Smith SC Jr, Spencer CC, Stafford RS, Taler SJ, Thomas RJ, Williams KA Sr, Williamson JD, Wright JT Jr. 2017 ACC/AHA/AAPA/ABC/ACPM/AGS/APhA/ASH/ASPC/NMA/PCNA Guideline for the prevention, detection, evaluation, and management of high blood pressure in adults: executive summary: a report of the American College of Cardiology/American Heart Association Task Force on Clinical Practice Guidelines. *J Am Coll Cardiol* 2018; 71:2199–2269.
 10. Williams B, Mancia G, Spiering W, Agabiti Rosei E, Azizi M, Burnier M, Clement DL, Coca A, de Simone G, Dominiczak A, Kahan T, Mahfoud F, Redon J, Ruilope L, Zanchetti A, Kerins M, Kjeldsen SE, Kreutz R, Laurent S, Lip GYH, McManus R, Narkiewicz K, Ruschitzka F, Schmieder RE, Shlyakhto E, Tsioufis C, Aboyans V, Desormais I; ESC Scientific Document Group. 2018 ESC/ESH Guidelines for the management of arterial hypertension. *Eur Heart J* 2018; 39:3021–3104.
 11. Joint Committee for Guideline Revision. 2018 Chinese guidelines for prevention and treatment of hypertension—a report of the revision committee of Chinese guidelines for prevention and treatment of hypertension. *J Geriatr Cardiol* 2019; 16:182–241.
 12. Chiang CE, Wang TD, Ueng KC, Lin TH, Yeh HI, Chen CY, Wu YJ, Tsai WC, Chao TH, Chen CH, Chu PH, Chao CL, Liu PY, Sung SH, Cheng HM, Wang KL, Li YH, Chiang FT, Chen JH, Chen WJ, Yeh SJ, Lin SJ. 2015 guidelines of the Taiwan Society of Cardiology and the Taiwan Hypertension Society for the management of hypertension. *J Chin Med Assoc* 2015; 78:1–47.
 13. Lee HY, Shin J, Kim GH, Park S, Ihm SH, Kim HC, Kim KI, Kim JH, Lee JH, Park JM, Pyun WB, Chae SC. 2018 Korean Society of Hypertension Guidelines for the management of hypertension: part II—diagnosis and treatment of hypertension. *Clin Hypertens* 2019; 25:20.
 14. Kario K, Park S, Chia YC, Sukonthasarn A, Turana Y, Shin J, Chen CH, Buranakitjaroen P, Divinagracia R, Nailes J, Hoshide S, Siddique S, Sison J, Soenarta AA, Sogunuru GP, Tay JC, Teo BW, Zhang YQ, Van Minh H, Tomitani N, Kabutoya T, Verma N, Wang TD, Wang JG. 2020 Consensus summary on the management of hypertension in Asia from the HOPE Asia Network. *J Clin Hypertens (Greenwich)* 2020; 22:351–362.
 15. Kario K, Tomitani N, Buranakitjaroen P, Chia YC, Park S, Chen CH, Divinagracia R, Shin J, Siddique S, Sison J, Ann Soenarta A, Sogunuru GP, Tay JC, Turana Y, Zhang Y, Nailes J, Wanthong S, Hoshide S, Matsushita N, Kanegae H, Wang JG; HOPE Asia Network. Home blood pressure control status in 2017–2018 for hypertension specialist centers in Asia: results of the Asia BP@Home study. *J Clin Hypertens (Greenwich)* 2018; 20:1686–1695.
 16. Park S, Buranakitjaroen P, Chen CH, Chia YC, Divinagracia R, Hoshide S, Shin J, Siddique S, Sison J, Soenarta AA, Sogunuru GP, Tay JC, Turana Y, Wang JG, Zhang Y, Kario K; HOPE Asia Network. Expert panel consensus recommendations for home blood pressure monitoring in Asia: the HOPE Asia Network. *J Hum Hypertens* 2018; 32:249–258.
 17. Wang JG, Bu PL, Chen LY, Chen X, Chen YY, Cheng WL, Chu SL, Cui ZQ, Dai QY, Feng YQ, Jiang XJ, Jiang YN, Li WH, Li Y, Li Y, Lin JX, Liu J, Mu JJ, Peng YX, Song L, Sun NL, Wang Y, Xi Y, Xie LD, Xue H, Yu J, Yu W, Zhang YQ, Zhu ZM. 2019 Chinese Hypertension League guidelines on home blood pressure monitoring. *J Clin Hypertens (Greenwich)* 2020; 22:378–383.
 18. Kario K, Park S, Buranakitjaroen P, Chia YC, Chen CH, Divinagracia R, Hoshide S, Shin J, Siddique S, Sison J, Soenarta AA, Sogunuru GP, Tay JC, Turana Y, Wong L, Zhang Y, Wang JG. Guidance on home blood pressure monitoring: a statement of the HOPE Asia Network. *J Clin Hypertens (Greenwich)* 2018; 20:456–461.
 19. Narita K, Hoshide S, Fujiwara T, Kanegae H, Kario K. Seasonal variation of home blood pressure and its association with target organ damage: the J-HOP Study (Japan Morning Surge-Home Blood Pressure). *Am J Hypertens* 2020; 33:620–628.
 20. Tomitani N, Kanegae H, Suzuki Y, Kuwabara M, Kario K. Stress-induced blood pressure elevation self-measured by a wearable watch-type device. *Am J Hypertens* 2021; 34: 377–382.
 21. Hoshide S, Kario K, Yano Y, Haimoto H, Yamagiwa K, Uchiba K, Nagasaka S, Matsui Y, Nakamura A, Fukutomi M, Eguchi K, Ishikawa J; J-HOP Study Group. Association of morning and evening blood pressure at home with asymptomatic organ damage in the J-HOP Study. *Am J Hypertens* 2014; 27:939–947.
 22. Ishikawa J, Hoshide S, Eguchi K, Ishikawa S, Shimada K, Kario K; Japan Morning Surge-Home Blood Pressure Study Investigators Group. Nighttime home blood pressure and the risk of hypertensive target organ damage. *Hypertension* 2012; 60:921–928.
 23. Ishikawa J, Shimizu M, Sugiyama Edison E, Yano Y, Hoshide S, Eguchi K, Kario K; J-TOP (Japan Morning Surge-Target Organ Protection) Study Investigators Group. Assessment of the reductions in night-time blood pressure and dipping induced by antihypertensive medication using a home blood pressure monitor. *J Hypertens* 2014; 32:82–89.
 24. Kario K, Hoshide S, Haimoto H, Yamagiwa K, Uchiba K, Nagasaka S, Yano Y, Eguchi K, Matsui Y, Shimizu M, Ishikawa J, Ishikawa S; J-HOP study group. Sleep blood pressure self-measured at home as a novel determinant of organ damage: Japan Morning Surge Home Blood Pressure (J-HOP) Study. *J Clin Hypertens (Greenwich)* 2015; 17:340–348.
 25. Kario K, Hoshide S, Shimizu M, Yano Y, Eguchi K, Ishikawa J, Ishikawa S, Shimada K. Effect of dosing time of angiotensin II receptor blockade titrated by self-measured blood pressure recordings on cardiorenal protection in hypertensives: the Japan Morning Surge-Target Organ Protection (J-TOP) study. *J Hypertens* 2010; 28:1574–1583.
 26. Kario K, Kanegae H, Tomitani N, Okawara Y, Fujiwara T, Yano Y, Hoshide S. Nighttime blood pressure measured by home blood pressure monitoring as an independent predictor of cardiovascular events in general practice. *Hypertension* 2019; 73:1240–1248.
 27. Kollias A, Andreadis E, Agaliotis G, Kolyvas GN, Achimastos A, Stergiou GS. The optimal night-time home blood pressure monitoring schedule: agreement with ambulatory blood pressure and association with organ damage. *J Hypertens* 2018; 36:243–249.
 28. Fujiwara T, Nishizawa M, Hoshide S, Kanegae H, Kario K. Comparison of different schedules of nocturnal home blood pressure measurement using an information/communication technology-based device in hypertensive patients. *J Clin Hypertens (Greenwich)* 2018; 20:1633–1641.
 29. Fujiwara T, Tomitani N, Kanegae H, Kario K. Comparative effects of valsartan plus either cilnidipine or hydrochlorothiazide on home morning blood pressure surge evaluated by information and communication technology-based nocturnal home blood pressure monitoring. *J Clin Hypertens (Greenwich)* 2018; 20:159–167.
 30. Kario K, Tomitani N, Kanegae H, Ishii H, Uchiyama K, Yamagiwa K, Shiraiwa T, Katsuya T, Yoshida T, Kanda K, Hasegawa S, Hoshide S. Comparative effects of an angiotensin II receptor blocker (ARB)/diuretic vs. ARB/calcium-channel blocker combination on uncontrolled nocturnal hypertension evaluated by information and communication technology-based nocturnal home blood pressure monitoring—the NOCTURNE Study. *Circ J* 2017; 81:948–957.
 31. Kario K. Evidence and perspectives on the 24-hour management of hypertension: hemodynamic biomarker-initiated ‘anticipation medicine’ for zero cardiovascular event. *Prog Cardiovasc Dis* 2016; 59:262–281.
 32. Kario K. Nocturnal hypertension: new technology and evidence. *Hypertension* 2018; 71:997–1009.
 33. Kario K, Tomitani N, Kanegae H, Yasui N, Nagai R, Harada H. The further development of out-of-office BP monitoring: Japan’s IMPACT Program Project’s achievements, impact, and direction. *J Clin Hypertens (Greenwich)* 2019; 21:344–349.
 34. Kario K. *Essential Manual on Perfect 24-Hour Blood Pressure Management from Morning to Nocturnal Hypertension: Up-to-Date for Anticipation Medicine*. Wiley Publishing; Japan, 2018.

35. Shimbo D, Pickering TG, Spruill TM, Abraham D, Schwartz JE, Gerin W. Relative utility of home, ambulatory, and office blood pressures in the prediction of end-organ damage. *Am J Hypertens* 2007; 20:476–482.
36. Tsunoda S, Kawano Y, Horio T, Okuda N, Takishita S. Relationship between home blood pressure and longitudinal changes in target organ damage in treated hypertensive patients. *Hypertens Res* 2002; 25:167–173.
37. Bobrie G, Chatellier G, Genes N, Clerson P, Vaur L, Vaisse B, Menard J, Mallion JM. Cardiovascular prognosis of “masked hypertension” detected by blood pressure self-measurement in elderly treated hypertensive patients. *JAMA* 2004; 291:1342–1349.
38. Fagard RH, Van Den Broeke C, De Cort P. Prognostic significance of blood pressure measured in the office, at home and during ambulatory monitoring in older patients in general practice. *J Hum Hypertens* 2005; 19:801–807.
39. Niiranen TJ, Hänninen MR, Johansson J, Reunanen A, Jula AM. Home-measured blood pressure is a stronger predictor of cardiovascular risk than office blood pressure: the Finn-Home study. *Hypertension* 2010; 55:1346–1351.
40. Ohkubo T, Imai Y, Tsuji I, Nagai K, Kato J, Kikuchi N, Nishiyama A, Aihara A, Sekino M, Kikuya M, Ito S, Satoh H, Hisamichi S. Home blood pressure measurement has a stronger predictive power for mortality than does screening blood pressure measurement: a population-based observation in Ohasama, Japan. *J Hypertens* 1998; 16:971–975.
41. Bliziotis IA, Destounis A, Stergiou GS. Home versus ambulatory and office blood pressure in predicting target organ damage in hypertension: a systematic review and meta-analysis. *J Hypertens* 2012; 30:1289–1299.
42. Kario K, Saito I, Kushiro T, Teramukai S, Ishikawa Y, Mori Y, Kobayashi F, Shimada K. Home blood pressure and cardiovascular outcomes in patients during antihypertensive therapy: primary results of HONEST, a large-scale prospective, real-world observational study. *Hypertension* 2014; 64:989–996.
43. Kario K, Saito I, Kushiro T, Teramukai S, Tomono Y, Okuda Y, Shimada K. Morning home blood pressure is a strong predictor of coronary artery disease: the HONEST Study. *J Am Coll Cardiol* 2016; 67:1519–1527.
44. Asayama K, Thijs L, Brguljan-Hitij J, Niiranen TJ, Hozawa A, Boggia J, Aparicio LS, Hara A, Johansson JK, Ohkubo T, Tzourio C, Stergiou GS, Sandoya E, Tsuji I, Jula AM, Imai Y, Staessen JA; International Database of Home Blood Pressure in Relation to Cardiovascular Outcome (IDHOCO) investigators. Risk stratification by self-measured home blood pressure across categories of conventional blood pressure: a participant-level meta-analysis. *PLoS Med* 2014; 11:e1001591.
45. Okumiya K, Matsubayashi K, Wada T, Fujisawa M, Osaki Y, Doi Y, Yasuda N, Ozawa T. A U-shaped association between home systolic blood pressure and four-year mortality in community-dwelling older men. *J Am Geriatr Soc* 1999; 47:1415–1421.
46. Asayama K, Ohkubo T, Kikuya M, Metoki H, Hoshi H, Hashimoto J, Totsune K, Satoh H, Imai Y. Prediction of stroke by self-measurement of blood pressure at home versus casual screening blood pressure measurement in relation to the Joint National Committee 7 classification: the Ohasama study. *Stroke* 2004; 35:2356–2361.
47. Sega R, Facchetti R, Bombelli M, Cesana G, Corrao G, Grassi G, Mancia G. Prognostic value of ambulatory and home blood pressures compared with office blood pressure in the general population: follow-up results from the Pressioni Arteriose Monitorate e Loro Associazioni (PAMELA) study. *Circulation* 2005; 111:1777–1783.
48. Asayama K, Ohkubo T, Metoki H, Obara T, Inoue R, Kikuya M, Thijs L, Staessen JA, Imai Y. Hypertension Objective Treatment Based on Measurement by Electrical Devices of Blood Pressure (HOMED-BP). Cardiovascular outcomes in the first trial of antihypertensive therapy guided by self-measured home blood pressure. *Hypertens Res* 2012; 35:1102–1110.
49. Tientcheu D, Ayers C, Das SR, McGuire DK, de Lemos JA, Khera A, Kaplan N, Victor R, Vongpatanasin W. Target organ complications and cardiovascular events associated with masked hypertension and white-coat hypertension: analysis from the Dallas Heart Study. *J Am Coll Cardiol* 2015; 66:2159–2169.
50. Hoshida S, Yano Y, Haimoto H, Yamagiwa K, Uchiba K, Nagasaka S, Matsui Y, Nakamura A, Fukutomi M, Eguchi K, Ishikawa J, Kario K; J-HOP Study Group. Morning and evening home blood pressure and risks of incident stroke and coronary artery disease in the Japanese general practice population: the Japan Morning Surge-Home Blood Pressure Study. *Hypertension* 2016; 68:54–61.
51. Ntineri A, Kalogeropoulos PG, Kyriakoulis KG, Aissopou EK, Thomopoulou G, Kollias A, Stergiou GS. Prognostic value of average home blood pressure and variability: 19-year follow-up of the Didima study. *J Hypertens* 2018; 36:69–76.
52. Fujiwara T, Hoshida S, Kanegae H, Kario K. Cardiovascular event risks associated with masked nocturnal hypertension defined by home blood pressure monitoring in the J-HOP nocturnal blood pressure study. *Hypertension* 2020; 76:259–266.
53. Mokwatsi GG, Hoshida S, Kanegae H, Fujiwara T, Negishi K, Schutte AE, Kario K. Direct comparison of home versus ambulatory defined nocturnal hypertension for predicting cardiovascular events: the Japan Morning Surge-Home Blood Pressure (J-HOP) Study. *Hypertension* 2020; 76:554–561.
54. Zhang DY, Guo QH, An DW, Li Y, Wang JG. A comparative meta-analysis of prospective observational studies on masked hypertension and masked uncontrolled hypertension defined by ambulatory and home blood pressure. *J Hypertens* 2019; 37:1775–1785.
55. Guo QH, Cheng YB, Zhang DY, Wang Y, Huang QF, Sheng CS, Xu TY, Li Y, Wang JG. Comparison between home and ambulatory morning blood pressure and morning hypertension in their reproducibility and associations with vascular injury. *Hypertension* 2019; 74:137–144.
56. Hansen TW, Li Y, Boggia J, Thijs L, Richart T, Staessen JA. Predictive role of the nighttime blood pressure. *Hypertension* 2011; 57:3–10.
57. Asayama K, Fujiwara T, Hoshida S, Ohkubo T, Kario K, Stergiou GS, Parati G, White WB, Weber MA, Imai Y; International Expert Group of Nocturnal Home Blood Pressure. Nocturnal blood pressure measured by home devices: evidence and perspective for clinical application. *J Hypertens* 2019; 37:905–916.
58. Kollias A, Ntineri A, Stergiou GS. Association of night-time home blood pressure with night-time ambulatory blood pressure and target-organ damage: a systematic review and meta-analysis. *J Hypertens* 2017; 35:442–452.
59. Kikuya M, Ohkubo T, Asayama K, Metoki H, Obara T, Saito S, Hashimoto J, Totsune K, Hoshi H, Satoh H, Imai Y. Ambulatory blood pressure and 10-year risk of cardiovascular and noncardiovascular mortality: the Ohasama study. *Hypertension* 2005; 45:240–245.
60. Kario K, Hoshida S, Mizuno H, Kabutoya T, Nishizawa M, Yoshida T, Abe H, Katsuya T, Fujita Y, Okazaki O, Yano Y, Tomitani N, Kanegae H; JAMP Study Group. Nighttime blood pressure phenotype and cardiovascular prognosis: practitioner-based nationwide JAMP Study. *Circulation* 2020; 142:1810–1820.
61. Stergiou GS, Nasothimiou EG, Destounis A, Poulidakis E, Evagelou I, Tzamouranis D. Assessment of the diurnal blood pressure profile and detection of non-dippers based on home or ambulatory monitoring. *Am J Hypertens* 2012; 25:974–978.
62. Imai Y, Munakata M, Tsuji I, Ohkubo T, Satoh H, Yoshino H, Watanabe N, Nishiyama A, Onodera N, Kato J, Sekino M, Aihara A, Kasai Y, Abe K. Seasonal variation in blood pressure in normotensive women studied by home measurements. *Clin Sci (Lond)* 1996; 90:55–60.
63. Hanazawa T, Asayama K, Watabe D, Tanabe A, Satoh M, Inoue R, Hara A, Obara T, Kikuya M, Nomura K, Metoki H, Imai Y, Ohkubo T. Association between amplitude of seasonal variation in self-measured home blood pressure and cardiovascular outcomes: HOMED-BP (Hypertension Objective Treatment Based on Measurement by Electrical Devices of Blood Pressure) Study. *J Am Heart Assoc* 2018; 7:e008509.
64. Umishio W, Ikaga T, Kario K, Fujino Y, Hoshi T, Ando S, Suzuki M, Yoshimura T, Yoshino H, Murakami S; SWH Survey Group. Cross-sectional analysis of the relationship between home blood pressure and indoor temperature in winter: a nationwide smart wellness housing survey in Japan. *Hypertension* 2019; 74:756–766.
65. Umishio W, Ikaga T, Kario K, Fujino Y, Hoshi T, Ando S, Suzuki M, Yoshimura T, Yoshino H, Murakami S; Smart Wellness Housing survey group. Intervention study of the effect of insulation retrofitting on home blood pressure in winter: a nationwide Smart Wellness Housing survey. *J Hypertens* 2020; 38:2510–2518.
66. Park S, Kario K, Chia YC, Turana Y, Chen CH, Buranakitjaroen P, Nales J, Hoshida S, Siddique S, Sison J, Soenarta AA, Sogunuru GP, Tay JC, Teo BW, Zhang YQ, Shin J, Van Minh H, Tomitani N, Kabutoya T, Sukonthasarn A, Verma N, Wang TD, Wang JG; HOPE

- Asia Network. The influence of the ambient temperature on blood pressure and how it will affect the epidemiology of hypertension in Asia. *J Clin Hypertens (Greenwich)* 2020; 22:438–444.
67. Kikuya M, Ohkubo T, Metoki H, Asayama K, Hara A, Obara T, Inoue R, Hoshi H, Hashimoto J, Totsune K, Satoh H, Imai Y. Day-by-day variability of blood pressure and heart rate at home as a novel predictor of prognosis: the Ohasama study. *Hypertension* 2008; 52:1045–1050.
 68. Johansson JK, Niiranen TJ, Puukka PJ, Jula AM. Prognostic value of the variability in home-measured blood pressure and heart rate: the Finn-Home Study. *Hypertension* 2012; 59:212–218.
 69. Kario K, Chirinos JA, Townsend RR, Weber MA, Scuteri A, Avolio A, Hoshide S, Kabutoya T, Tomiyama H, Node K, Ohishi M, Ito S, Kishi T, Rakugi H, Li Y, Chen CH, Park JB, Wang JG. Systemic hemodynamic atherothrombotic syndrome (SHATS)—coupling vascular disease and blood pressure variability: proposed concept from pulse of Asia. *Prog Cardiovasc Dis* 2020; 63:22–32.
 70. Ushigome E, Fukui M, Hamaguchi M, Senmaru T, Sakabe K, Tanaka M, Yamazaki M, Hasegawa G, Nakamura N. The coefficient variation of home blood pressure is a novel factor associated with macroalbuminuria in type 2 diabetes mellitus. *Hypertens Res* 2011; 34:1271–1275.
 71. Matsui Y, Ishikawa J, Eguchi K, Shibasaki S, Shimada K, Kario K. Maximum value of home blood pressure: a novel indicator of target organ damage in hypertension. *Hypertension* 2011; 57:1087–1093.
 72. Godai K, Kabayama M, Gondo Y, Yasumoto S, Sekiguchi T, Noma T, Tanaka K, Kiyoshige E, Akagi Y, Sugimoto K, Akasaka H, Takami Y, Takeya Y, Yamamoto K, Arai Y, Masui Y, Ishizaki T, Ikebe K, Satoh M, Asayama K, Ohkubo T, Rakugi H, Kamide K; SONIC study group. Day-to-day blood pressure variability is associated with lower cognitive performance among the Japanese community-dwelling oldest-old population: the SONIC study. *Hypertens Res* 2020; 43:404–411.
 73. Ishiyama Y, Hoshide S, Kanegae H, Kario K. Increased arterial stiffness amplifies the association between home blood pressure variability and cardiac overload: the J-HOP Study. *Hypertension* 2020; 75:1600–1606.
 74. Kitagawa N, Ushigome E, Matsumoto S, Oyabu C, Ushigome H, Yokota I, Asano M, Tanaka M, Yamazaki M, Fukui M. Prognostic significance of home pulse pressure for progression of diabetic nephropathy: KAMOGAWA-HBP Study. *Hypertens Res* 2018; 41:363–371.
 75. Suzuki D, Hoshide S, Kario K. Associations between day-by-day home blood pressure variability and renal function and albuminuria in patients with and without diabetes. *Am J Hypertens* 2020; 33:860–868.
 76. Hoshide S, Yano Y, Mizuno H, Kanegae H, Kario K. Day-by-day variability of home blood pressure and incident cardiovascular disease in clinical practice: the J-HOP Study (Japan Morning Surge-Home Blood Pressure). *Hypertension* 2018; 71:177–184.
 77. Breaux-Shropshire TL, Judd E, Vucovich LA, Shropshire TS, Singh S. Does home blood pressure monitoring improve patient outcomes? A systematic review comparing home and ambulatory blood pressure monitoring on blood pressure control and patient outcomes. *Integr Blood Press Control* 2015; 8:43–49.
 78. Matsui Y, Eguchi K, O'Rourke MF, Ishikawa J, Miyashita H, Shimada K, Kario K. Differential effects between a calcium channel blocker and a diuretic when used in combination with angiotensin II receptor blocker on central aortic pressure in hypertensive patients. *Hypertension* 2009; 54:716–723.
 79. Cappuccio FP, Kerry SM, Forbes L, Donald A. Blood pressure control by home monitoring: meta-analysis of randomised trials. *BMJ* 2004; 329:145.
 80. Glynn LG, Murphy AW, Smith SM, Schroeder K, Fahey T. Interventions used to improve control of blood pressure in patients with hypertension. *Cochrane Database Syst Rev* 2010; CD005182.
 81. Bray EP, Holder R, Mant J, McManus RJ. Does self-monitoring reduce blood pressure? Meta-analysis with meta-regression of randomized controlled trials. *Ann Med* 2010; 42:371–386.
 82. Agarwal R, Bills JE, Hecht TJ, Light RP. Role of home blood pressure monitoring in overcoming therapeutic inertia and improving hypertension control: a systematic review and meta-analysis. *Hypertension* 2011; 57:29–38.
 83. Omboni S, McManus RJ, Bosworth HB, Chappell LC, Green BB, Kario K, Logan AG, Magid DJ, McKinstry B, Margolis KL, Parati G, Wakefield BJ. Evidence and recommendations on the use of telemedicine for the management of arterial hypertension: an International Expert Position Paper. *Hypertension* 2020; 76:1368–1383.
 84. McLean G, Band R, Saunderson K, Hanlon P, Murray E, Little P, McManus RJ, Yardley L, Mair FS; DIPSS Co-Investigators. Digital interventions to promote self-management in adults with hypertension systematic review and meta-analysis. *J Hypertens* 2016; 34:600–612.
 85. Milani RV, Lavie CJ, Bober RM, Milani AR, Ventura HO. Improving hypertension control and patient engagement using digital tools. *Am J Med* 2017; 130:14–20.
 86. McManus RJ, Mant J, Bray EP, Holder R, Jones MI, Greenfield S, Kaambwa B, Banting M, Bryan S, Little P, Williams B, Hobbs FD. Telemonitoring and self-management in the control of hypertension (TASMINH2): a randomised controlled trial. *Lancet* 2010; 376:163–172.
 87. Margolis KL, Asche SE, Bergdall AR, Dehmer SP, Groen SE, Kadrmas HM, Kerby TJ, Klotzle KJ, Maciosek MV, Michels RD, O'Connor PJ, Pritchard RA, Sekenski JL, Sperl-Hillen JM, Trower NK. Effect of home blood pressure telemonitoring and pharmacist management on blood pressure control: a cluster randomized clinical trial. *JAMA* 2013; 310:46–56.
 88. Nishizawa M, Hoshide S, Okawara Y, Matsuo T, Kario K. Strict blood pressure control achieved using an ICT-based home blood pressure monitoring system in a catastrophically damaged area after a disaster. *J Clin Hypertens (Greenwich)* 2017; 19:26–29.
 89. Kario K, Nomura A, Harada N, Tanigawa T, So R, Nakagawa K, Suzuki S, Okura A, Hida E, Satake K. A multicenter clinical trial to assess the efficacy of the digital therapeutics for essential hypertension: rationale and design of the HERB-DH1 trial. *J Clin Hypertens (Greenwich)* 2020; 22:1713–1722.
 90. Kario K. Management of hypertension in the digital era: small wearable monitoring devices for remote blood pressure monitoring. *Hypertension* 2020; 76:640–650.
 91. Kuwabara M, Harada K, Hishiki Y, Kario K. Validation of a wrist-type home nocturnal blood pressure monitor in the sitting and supine position according to the ANSI/AAMI/ISO81060-2:2013 guidelines: Omron HEM-9600T. *J Clin Hypertens (Greenwich)* 2019; 21:463–469.
 92. Kuwabara M, Harada K, Hishiki Y, Kario K. Validation of two watch-type wearable blood pressure monitors according to the ANSI/AAMI/ISO81060-2:2013 guidelines: Omron HEM-6410T-ZM and HEM-6410T-ZL. *J Clin Hypertens (Greenwich)* 2019; 21:853–858.
 93. Kario K, Shimbo D, Tomitani N, Kanegae H, Schwartz JE, Williams B. The first study comparing a wearable watch-type blood pressure monitor with a conventional ambulatory blood pressure monitor on in-office and out-of-office settings. *J Clin Hypertens (Greenwich)* 2020; 22:135–141.
 94. Kabutoya T, Takahashi S, Watanabe T, Imai Y, Uemoto K, Yasui N, Kario K. Diagnostic accuracy of an algorithm for detecting atrial fibrillation in a wrist-type pulse wave monitor. *J Clin Hypertens (Greenwich)* 2019; 21:1393–1398.
 95. Kanegae H, Suzuki K, Fukatani K, Ito T, Harada N, Kario K. Highly precise risk prediction model for new-onset hypertension using artificial intelligence techniques. *J Clin Hypertens (Greenwich)* 2020; 22:445–450.
 96. Koshimizu H, Kojima R, Kario K, Okuno Y. Prediction of blood pressure variability using deep neural networks. *Int J Med Inform* 2020; 136:104067.
 97. Wang JG, Bunyi ML, Chia YC, Kario K, Ohkubo T, Park S, Sukonthasarn A, Tay JC, Turana Y, Verma N, Wang TD, Imai Y. Insights on home blood pressure monitoring in Asia: expert perspectives from 10 countries/regions. *J Clin Hypertens (Greenwich)* 2021; 23: 3–11.