



OPEN

Individual and population dietary specialization decline in fin whales during a period of ecosystem shift

Cabrol Jory^{1✉}, Véronique Lesage^{1,2}, Alexandra Leclerc^{1,2}, Janie Giard³, Sara Iverson⁴, Martine Bérubé^{5,6}, Robert Michaud³ & Christian Nozais²

This study sought to estimate the effect of an anthropogenic and climate-driven change in prey availability on the degree of individual and population specialization of a large marine predator, the fin whale (*Balaenoptera physalus*). We examined skin biopsies from 99 fin whales sampled in the St. Lawrence Estuary (Canada) over a nine year period (1998–2006) during which environmental change was documented. We analyzed stable isotope ratios in skin and fatty acid signatures in blubber samples of whales, as well as in seven potential prey species, and diet was quantitatively assessed using Bayesian isotopic models. An abrupt change in fin whale dietary niche coincided with a decrease in biomass of their predominant prey, Arctic krill (*Thysanoessa* spp.). This dietary niche widening toward generalist diets occurred in nearly 60% of sampled individuals. The fin whale population, typically composed of specialists of either krill or lipid-rich pelagic fishes, shifted toward one composed either of krill specialists or true generalists feeding on various zooplankton and fish prey. This change likely reduced intraspecific competition. In the context of the current “Atlantification” of northern water masses, our findings emphasize the importance of considering individual-specific foraging tactics and not only population or group average responses when assessing population resilience or when implementing conservation measures.

Understanding how dietary niche variability operates at the individual level and among conspecifics is central to defining species ecological needs, and refine conservation effort. Dietary niche varies among species largely as a result of evolutionary processes. However, optimal foraging theory and the niche concept predict feeding strategies to be continuously affected by resource availability or quality¹. The adaptive capacity of a population to changing resources depends on the degree of individual specialization within the population^{2,3}, with specialist feeders typically expected to be less adaptive than in generalist feeders^{4,5}. In generalist populations, however, the adaptive capacity will vary depending on whether the population's dietary niche width results from generalist individuals all exploiting a broad range of prey, or from specialist individuals within the population each specializing on a different but narrow range of prey^{2,3}.

A variety of factors likely influence the degree of individual specialization within a population, including intra- and interspecific competition, and food web complexity^{6–8}. Individual specialization may also arise from an ecological “opportunity” created for instance, by the increase of a novel and valuable resource or conversely, by an increase in competition for a shared resource⁹. In the face of the major changes currently observed in the trophic structure of northern ecosystems with the “Atlantification” of Arctic ecosystems^{10,11}, a widening of the trophic niche of the population through diet specialization of individuals on different prey might represent an efficient strategy to cope with these changes. This could be the case for long-lived predators such as baleen whales, which may go through multiple cycles of environmental variability and prey availability during their lifetime⁵.

Fin whales (*Balaenoptera physalus*) are baleen whales with a cosmopolitan distribution across major ocean regions, although they are most abundant in temperate and subpolar latitudes^{11,12}. The Atlantic population is considered of particular concern in Canada, given the poor understanding of the stock structure, continued whaling in areas such as Iceland and Greenland, and local declines in abundance, including in the Gulf of St. Lawrence¹². Despite their conservation status, knowledge about their feeding ecology is generally lacking.

¹Maurice Lamontagne Institute, Fisheries and Oceans Canada, Mont-Joli, QC, Canada. ²Département de Biologie, Chimie et Géographie, Québec-Océan, Université du Québec à Rimouski, Rimouski, QC, Canada. ³Groupe de Recherche et d'Éducation sur les Mammifères Marins, Tadoussac, QC, Canada. ⁴Department of Biology, Dalhousie University, Halifax, NS, Canada. ⁵Marine Evolution and Conservation, Groningen Institute of Evolutionary Life Sciences, University of Groningen, Groningen, The Netherlands. ⁶Centre for Coastal Studies, Provincetown, MA, USA. ✉email: jory.cabrol@dfo-mpo.gc.ca

Compared to blue whales (*Balaenoptera musculus*) and right whales (*Eubalaena glacialis*), which are specialist feeders on euphausiids and copepods, respectively^{13,14}, fin whales are considered more as a generalist predator. In the North Atlantic, fin whales are known to feed on both zooplankton and small pelagic fishes, including multiple euphausiid species, capelin (*Mallotus villosus*), Atlantic herring (*Clupea harengus*) and sand lance (*Ammodytes* spp.)^{13,15–17}, although they might exploit other locally abundant prey^{15,16}.

Fin whales and blue whales are sympatric in the Estuary and Gulf of St. Lawrence (EGSL), Canada, where they share euphausiids as a prey resource along with other species¹⁶. However, considerable inter-individual variability has been noted in the isotopic signatures of fin whales from the EGSL and other areas of the North Atlantic, raising questions about the degree of specialization and prey selectivity among conspecifics of this presumed generalist species^{16,18}.

The St. Lawrence ecosystem has recently witnessed major and abrupt ecological shifts as a result of both overfishing and climate change^{19,20}. Several commercial groundfish populations collapsed in the early 1990s²¹, with a concurrent change in distribution and abundance of their prey species²². Additionally, oceanographic conditions, characterized by below-average seawater temperatures, changed around year 2000 towards above-average sea temperatures and below-average ice conditions, which have continued to prevail since²⁰. Populations of potential competitors of baleen whales, such as harp seals (*Pagophilus groenlandicus*) and grey seals (*Halichoerus grypus*), increased during this period^{23,24}. It was suggested that these ecosystem changes caused a reduction in prey availability for baleen whales, leading to a decrease in whale abundance at some foraging sites²⁵. However, how these changes in environmental conditions and trophic structure affected fin whale and other marine mammal diets remains poorly documented. Examining this question using a generalist predator with high absolute energy requirements such as fin whales is a unique opportunity to better understand individual responses to food shortages and how they cascade into population trophic niche width.

Specifically, we here examine the trophic niche specialisation of fin whales, at the individual and population levels, during a known ecosystem shift in the EGSL. While we recognize that fin whales sampled in the St. Lawrence Estuary during our study represent only a segment of the North Atlantic fin whale population, the term population is used hereafter for simplicity, when comparing dietary niche between individuals and our group of sampled individuals. We examine various niche metrics, as well as diet composition and degree of individual specialization. Specifically, we test the hypothesis of a broadening of fin whale dietary niche both at the individual and population level in response to the abrupt change in the St. Lawrence ecosystem structure, and associated prey availability around year 2000. To do so, we used a combination of stable isotope ($\delta^{13}\text{C}$ and $\delta^{15}\text{N}$) and fatty acid (FA) trophic markers analyzed from fin whale skin and blubber biopsies ($n = 99$) sampled between 1998 and 2006, along with that of potential prey species. Our results provide important information about the expected consequences of the current changes observed in the St. Lawrence and other northern latitude ecosystems on fin whales and other large marine predators, and crucial information relevant for implementation of efficient conservation measures.

Results

Fatty acid and isotopic signatures of potential prey. The seven potential prey sampled in the EGSL differed significantly in FA composition using the extended dietary FA subset (PAIRWISE; all $P < 0.004$; Fig. 1a and Supplementary Table S1 online). Overall, 14 FAs were responsible for more than 70% of the dissimilarity among potential prey species (SIMPER analyses; Fig. 1b). The $\Sigma 20:1$, $\Sigma 22:1$ and 16:1n7 FA isomers largely differentiated copepods from the rest of the prey species. These FAs, along with 14:0, also contributed to separating capelin from herring (up to 60% according to SIMPER analyses). These FAs, combined with 18:1n9, 16:4n1, 20:5n3, and 22:6n3, differentiated the two krill species and further differentiated krill species, and krill as a group from amphipods (Fig. 1 and Supplementary Table S1 online). We also noted a statistically significant difference in the FA composition of sand lance depending on sampling region (PERMANOVA; $Pseudo-F_{1,46} =$, $P < 0.0001$): concentrations of $\Sigma 20:1$, $\Sigma 22:1$, 20:5n3, and 22:6n3 were higher, and concentrations of 16:0 and 18:1n9 were lower, in sand lance sampled in the Gulf compared to the Estuary (Table S1).

The seven prey species also differed to some extent in their stable isotope ratios. However, Arctic krill and calanoid copepods were isotopically indistinguishable (PAIRWISE, $P = 0.68$), and were therefore considered a functional group for diet estimations. The same pattern was observed for capelin and herring (PAIRWISE, $P = 0.92$). While the two species were aggregated when included in isotope mixing models, capelin/herring from the Estuary were considered separately from capelin/herring from the Gulf in our analysis given the observed difference in $\delta^{13}\text{C}$ values between these two regions (PAIRWISE, $P = 0.002$), hence the potential for this group to convey information about feeding areas.

Isotopic and fatty acid signatures of fin whales. Overall, isotopic signatures of individual fin whales varied between -19.0 and -17.0‰ for $\delta^{13}\text{C}$, and 9.3 and 14.6‰ for $\delta^{15}\text{N}$. Male and female fin whales were similar in their isotope ratios (PERMANOVA; $\delta^{13}\text{C}$: $F_{1,97} = 1.82$; $P = 0.19$; $\delta^{15}\text{N}$: $F_{1,98} = 3.11$; $P = 0.1$) and FA composition (PERMANOVA; $Pseudo-F_{1,90} = 0.99$; $P = 0.2$). As a result, males and females were considered together in subsequent analyses.

Both seasonal and long-term trends were observed in stable isotope ratios (Fig. 2). Lower $\delta^{13}\text{C}$ values were observed in both late summer (after August 20th), and beginning in 2002 and later years (Fig. 2a,b). This pattern was unrelated to potential sampling biases as indicated by the persistence of the significant temporal trend over the time series after controlling for year effect (seasonal trend) or when considering the two seasons (summer and fall) separately (yearly trend). No seasonal trend was observed in nitrogen, but $\delta^{15}\text{N}$ values increased linearly over the study period 1998–2006 (Fig. 2c).

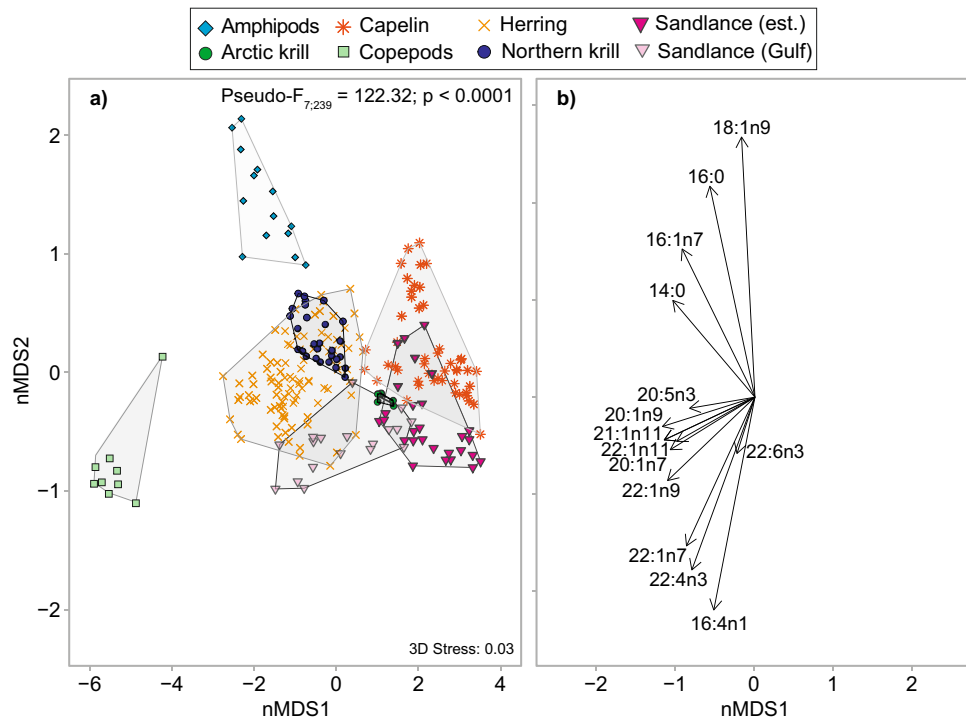


Figure 1. Multidimensional scaling (n-MDS) ordination in Euclidean space of (a) the fatty acid signature of potential prey sampled in the Estuary and Gulf of St. Lawrence between 1999 and 2005, and (b) fatty acids responsible for these groupings (Pearson correlations). Calculations were based on the extended dietary fatty acid subset (n = 39). Detailed interactive and static 3D n-MDS is also available in the Supplementary Fig. S1 online and in Mendeley data repository (<https://doi.org/10.17632/6nxhix9gbw.1>).

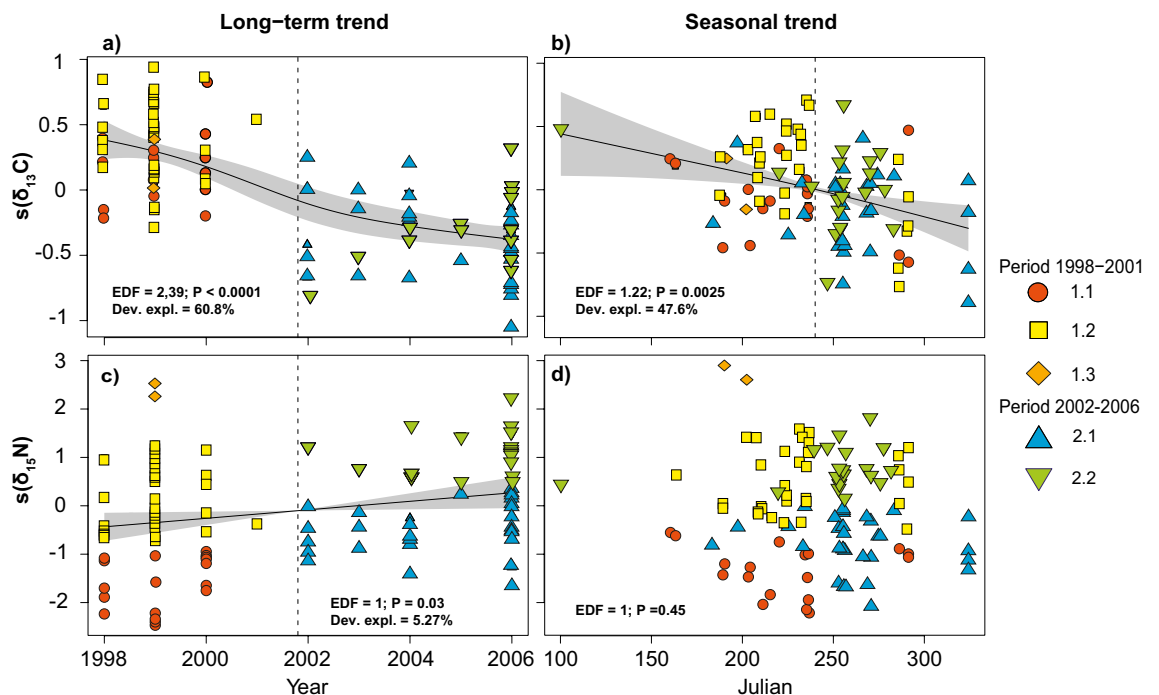


Figure 2. Long-term (a,c) and seasonal trend (b,d) in $\delta^{13}\text{C}$ and $\delta^{15}\text{N}$ values for fin whales sampled in the St. Lawrence Estuary between 1998 and 2006, superimposed with groups of fin whales as defined from the hierarchical cluster analysis (different symbols and colors). The y-axis shows deviations from mean isotopic values; shaded areas represent the 95% credibility interval around the generalized additive model; the dotted line represents the time of observed changes.

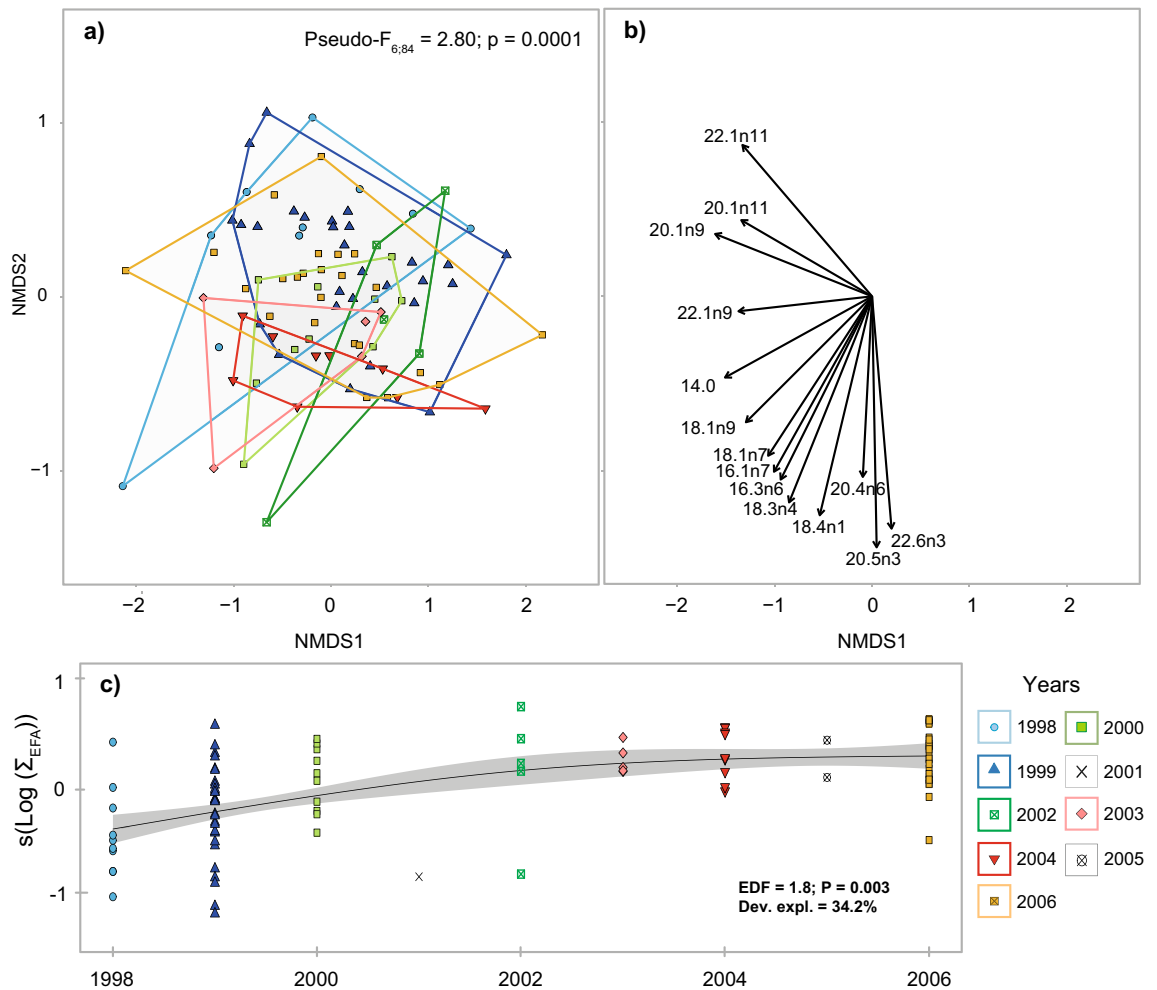


Figure 3. Multidimensional scaling (n-MDS) ordination in Euclidean space of (a) the fatty acid composition of fin whales, (b) fatty acids responsible for these groupings (Pearson correlations), and (c) long-term trend in the proportion of major essential fatty acids (Sum of 20:5n3, 22:6n3 and 20:4n6). nMDS calculations were based on the extended dietary fatty acid subset ($n = 39$). Avg. = Population average. Detailed interactive and static 3D n-MDS is also available in the Supplementary Fig. S2 online and in Mendeley data repository (<https://doi.org/10.17632/6nxhix9gbw.1>).

FAs in fin whale blubber did not change seasonally (PERMANOVA; $Pseudo-F_{2,89} = 1.91$; $P = 0.08$), but varied inter-annually (Fig. 3). More than 70% of these variations were explained by 14 FAs (SIMPER analyses; Fig. 3b). In addition, major essential FAs, represented by the sums of 20:5n3, 22:6n3 and 20:4n6, increased between 1998 and 2003, thereafter remaining constant until at least 2006 (Fig. 3c).

Diet estimation and specialization at the population level determined from isotopic mixing models.

The isotopic mixing models estimated a diet for fin whales composed predominantly of euphausiids when integrated over the entire study period 1998–2006 (Fig. 4a). Together, northern krill and the functional group Arctic krill/copepods represented $69.8 \pm 23.7\%$ of the estimated fin whale diet, with capelin/herring ($24.6 \pm 20.4\%$), amphipods ($3.1 \pm 3.1\%$) and sandlance ($2.4 \pm 1.7\%$) accounting for diminishing proportions of the diet. Before 2002, $89.5 \pm 2.5\%$ of the estimated diet was dominated by Arctic krill/copepods and, to a lower extent, pelagic fish (capelin/herring) from the St. Lawrence Estuary. During this period, the proportion of pelagic fish from the Estuary was times higher than pelagic fish from the Gulf in fin whale diets (Fig. 4a). In 2002 and subsequent years, fin whales appeared to feed to a lower extent on Arctic krill/copepods and capelin/herring from the Estuary (together $56.9 \pm 19.8\%$), and incorporated northern krill and to a lesser extent amphipods as other prey in their diet. It was also estimated that whales consumed a higher proportion of capelin/herring from the Gulf during 2002–2006 compared to previous years (Fig. 4a). As a result, there was a significant change in the specialization index of fin whales over the study period (Fig. 4b). Dietary habits shifted around 2002 from diets that were more typical of specialist feeders with \mathcal{E} varying from 0.51 to 0.89 ($\mathcal{E}_{\text{mean}} = 0.68$), to some that included true generalist feeders ($\mathcal{E}_{\text{min}} = 0.21$).

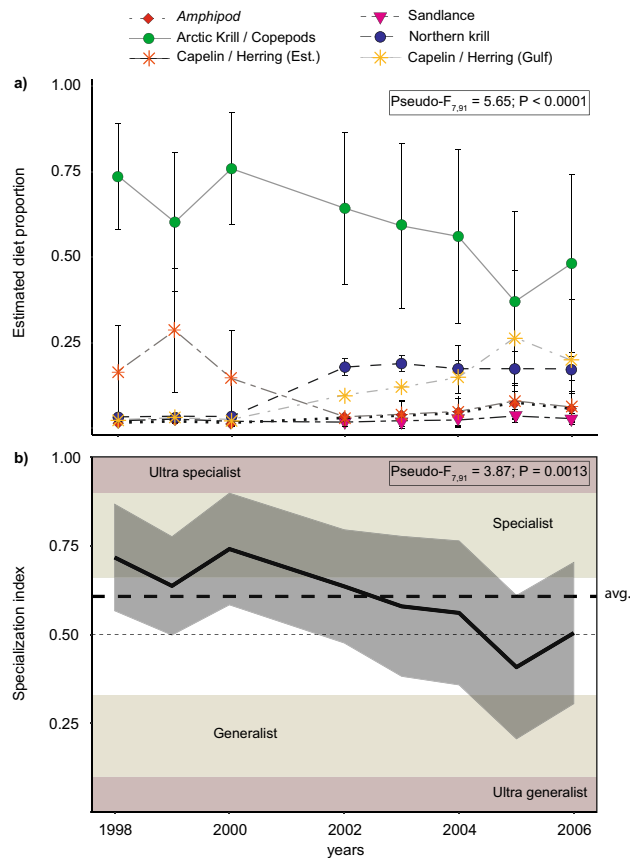


Figure 4. Inter-annual variation of (a) the estimated proportional contributions of each potential prey to fin whale diet from isotopic mixing models, with (b) the corresponding specialization index ϵ over the study period (1998–2006). Avg. population average.

Individual diet specialization. Given the observed shift in fin whale isotopic signatures starting in 2002 (Fig. 4), a pre- and post-2002 periods were considered in the cluster analysis for identifying natural groupings among individuals. This analysis revealed five isotopically distinct groups among the sampled fin whales, including three groups for the period 1998–2001 and two groups for 2002–2006.

Before 2002, two of the three groups (1.1 and 1.3) were highly selective, either toward Arctic krill/copepods (Group 1.1) or capelin/herring (Group 1.3), which accounted for an average of $89.2 \pm 2.7\%$ and $78.1 \pm 22.1\%$ of their diet, respectively (Fig. 5a). Group 1.2, which represented the majority of the individuals sampled before 2002 (~60%), adhered more to a “specialist-generalist” feeding behavior ($0.5 < \epsilon < 0.6$; Fig. 5b) with a diet composed of Arctic krill/copepods and capelin/herring in almost similar proportions (Fig. 5a).

In 2002 and subsequent years, 40% of the sampled individuals (Group 2.1) selected almost exclusively zooplankton, which contributed >90% to their diet. Individuals from this group were estimated to feed on both Arctic krill/copepods and Northern krill as well as on amphipods, thus also adhering to a “specialist-generalist” feeding behavior similar to fin whales from the earlier period ($\epsilon \sim 0.55$; Fig. 5c). However, the other 60% of the population (Group 2.2) exhibited a generalist feeding behavior ($\epsilon < 0.34$) by consuming prey from all functional groups, although with a higher representation of pelagic fish in their diet (Fig. 5c,d).

Discussion

This study reported on novel aspects of the foraging ecology of North Atlantic fin whales. There was a marked inter-individual variability in dietary habits and a widening of fin whales’ trophic niche both at the population and individual level during a period of documented environmental change in the EGSL. These changes were concomitant to a decrease in biomass of the whales’ primary prey, and resulted in an apparent shift in feeding areas for individuals targeting pelagic fish. Together, these findings add a new level of complexity for the conservation of this population of special concern in Canada¹².

Isotopic mixing models indicated that fin whales using the St. Lawrence estuary as part of their feeding habitat consumed predominantly Arctic krill/copepods in 1998–2006, with capelin/herring representing about 20% of their diet. Copepods are likely unimportant in the diet of fin whales¹⁷, leaving Arctic krill as the primary contributor of this functional group to the diet. Arctic krill is also an important prey for fin whales feeding in the Gulf of St. Lawrence, representing on average 56% of the diet in 1992–2010¹⁶. The relative dietary contributions of capelin versus Atlantic herring could not be assessed from stable isotopes due to their similarity in isotopic

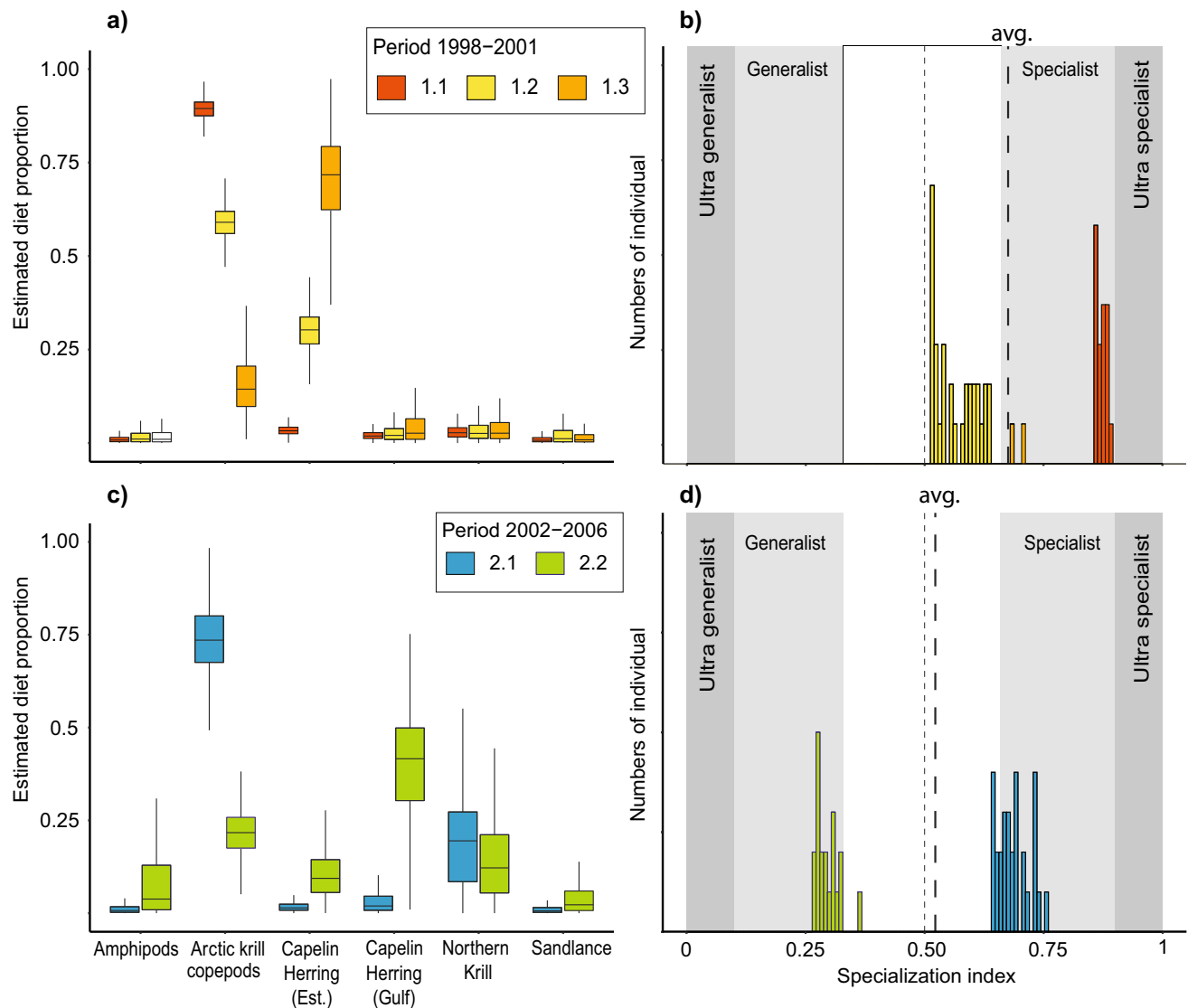


Figure 5. Estimated proportional contributions of potential prey determined from isotopic mixing models (a,c) and specialization index frequency (b,d) for each group of fin whales identified through the hierarchical cluster analysis for the periods 1998–2000 (a,b) and 2002–2006 (c,d).

composition, nor from their FA signatures due to limitations imposed on quantitative analyses when calibration coefficients are unknown^{26,27}. Furthermore, information on the abundance of different prey species is fragmentary for the EGSL, preventing speculation about their relative availability to fin whales both spatially and seasonally. Both capelin and herring are lipid-rich species (Table 1) and known prey of fin whales elsewhere^{16,18,28}. They are sympatric and available throughout the feeding season (i.e., from spring to fall) in the EGSL, although their relative availability may vary at finer scales within these regions²⁹.

Similarly, little information exists about the abundance of sandlance in the EGSL where it is suspected to be abundant²⁹. This species may be an important prey for a number of marine mammal species in the St. Lawrence Estuary such as the beluga (*Delphinapterus leucas*)³⁰ and possibly also for fin whales as previously suggested for the Gulf of St. Lawrence¹⁶. In the latter study, also based on stable isotope analysis, sandlance occupied a functional group with northern krill that was estimated to contribute up to 50% of fin whale diets¹⁶. While the relative contribution of sandlance and northern krill to fin whale diet in the Gulf remains unclear, our results indicate that northern krill may be a more important prey item than sandlance, with contributions varying among individuals from 0.9–56.4% for northern krill compared to 0–11.2% for sandlance.

Stable isotope ratios measured in the skin likely integrate diet over two to three months in odontocetes³¹. Although no value exists for the skin of larger cetaceans, the turnover rate has been suggested to be lower in baleen whales compared to toothed whales³². Accordingly, the skin of fin whales sampled in the early/middle of summer should reflect their average diet since early spring, and those sampled in the fall should reflect more of their summer-early fall diet. A progressive depletion in ¹³C occurred from June to November, with no change detected in trophic position (nitrogen isotope ratios; Fig. 2) after controlling for year effects. These results are consistent with other dietary studies of fin whales in the North Atlantic, which indicate a shift from

Potential prey	Sampling region		N _{tot}	Years							Length (cm)	Wet weight (g)	δ ¹³ C ± SD (‰)	δ ¹⁵ N ± SD (‰)	C:N ratio	% lipid
				1999	2000	2001	2002	2003	2004	2005						
Sand lance (<i>Ammodytes</i> spp.)	Est	SI	21	–	–	15	–	–	6	–	12.1 ± 4.1	5.4 ± 6.9	–18.7 ± 0.5	10.8 ± 0.3	3.16 ± 0.05	2.9 ± 1.7
		FA	18	–	–	6	6	6	–	–						
	Gulf	SI	6	–	–	5	–	–	1	–						
		FA	25	–	20	5	–	–	–	–						
Copepods (<i>Calanus</i> spp.)	Est	SI	42	–	–	32	10	–	–	–	–	0.12 ± 0.05	–18.4 ± 0.9	9.3 ± 0.4	3.25 ± 0.13	16.5 ± 3.6
		FA	10	–	–	10	–	–	–	–						
Herring (<i>Clupea harengus</i>)	Est	SI	40	–	–	30	–	10	–	–	23.1 ± 5.5	122.4 ± 69.8	–17.9 ± 0.9	12.7 ± 0.6	3.12 ± 0.06	7.1 ± 3.5
		FA	96	–	15	55	11	15	–	–						
	Gulf	SI	10	–	–	–	–	8	2	–						
		FA	–	–	–	–	–	–	–	–						
Capelin (<i>Mallotus villosus</i>)	Est	SI	100	–	–	–	–	56	4	40	12.8 ± 2.2	14.4 ± 7.0	–18.7 ± 0.3	12.4 ± 0.4	3.16 ± 0.03	2.8 ± 3.0
		FA	43	–	10	33	–	–	–	–						
	Gulf	SI	10	–	–	–	–	1	–	9						
		FA	–	–	–	–	–	–	–	–						
Northern Krill (<i>Meganyctiphanes norvegica</i>)	Est	SI	110	–	–	54	18	35	3	–	–	0.83 ± 1.38	–19.5 ± 0.5	10.7 ± 0.4	3.2 ± 0.05	3.2 ± 1.0
		FA	28	10	–	10	2	6	–	–						
Amphipods (<i>Themisto</i> spp.)	Est	SI	34	–	–	0	13	18	3	–	–	0.94 ± 0.37	–19.2 ± 0.4	11.9 ± 0.4	3.38 ± 0.1	4.2 ± 1.5
		FA	14	–	–	7	3	4	–	–						
Arctic krill (<i>Thysanoessa</i> spp.)	Est	SI	28	–	–	8	–	15	5	–	–	1.57 ± 2.81	–18.7 ± 0.3	9.3 ± 0.6	3.23 ± 0.08	6.5 ± 0.8
		FA	5	–	–	5	–	–	–	–						

Table 1. Sample size, descriptive characteristics and mean δ¹³C and δ¹⁵N values for fin whale potential prey collected between 1999 and 2005 in the Estuary and Gulf of St. Lawrence and analysed for stable isotope (SI) or fatty acid (FA) analyses. Central tendency is expressed as the mean (± SD). Isotopic values are uncorrected for isotopic discrimination, but are corrected for lipid extraction.

krill-dominated diets during summer to fish-dominated diets in the spring and/or fall³³. However, they contrast with a previous isotopic study of fin whales sampled in the Gulf of St. Lawrence which suggests constancy in diet across seasons¹⁶. The latter study however, was conducted in what is known as the main aggregation area for fin whales in the St. Lawrence (Estuary or Gulf). Fin whales from that feeding location might be less likely to move elsewhere compared to whales occupying secondary feeding areas such as the Estuary^{12,34}. The progressive carbon depletion that was observed over the season in our study probably reflects a change in diet and/or a shift in feeding area toward the more ¹³C-depleted Gulf of St. Lawrence³⁵, as fin whales increased their intake of northern krill or capelin/herring from the Gulf of St. Lawrence.

Overall, these results confirm previous findings that identified fin whales, when studied at the population level, as relatively generalist species feeding partly on krill and partly on small pelagic fishes in various environments, including the EGSL¹⁶, the northern and eastern Atlantic^{28,36}, the Pacific³⁷ and the Mediterranean Sea³⁸. However, our diet estimation and specialization indices revealed the existence of two contrasting foraging strategies among fin whales using the St. Lawrence Estuary as part of their foraging habitat, with the coexistence of highly specialized individuals, as well as true generalist individuals. Our results also highlighted a partitioning of food resources among the specialists (i.e., $\mathcal{E} < 0.7$), with individuals feeding almost exclusively (up to 80% of the diet) on Arctic krill or, for a smaller number of individuals, almost exclusively on lipid-rich pelagic fishes (capelin/herring). These results, combined with those obtained from fin whales in the Gulf of St. Lawrence¹⁶ highlight the importance of these resources, especially Arctic krill, in these environments. The diversity observed in the diet composition among individuals also suggests that some degree of competition may occur for food resources.

Intraspecific competition is considered one of the primary drivers of individual specialization, and could be even more important than interspecific competition for shaping individual behaviour within a population^{6,39}. By reducing prey availability and energy return over investment, intraspecific competition may lead to a specialization on different prey types, reducing the potential for competition to only a subset of the population². Within baleen whales and probably also for other taxonomic groups, specialist feeders may also become particularly efficient at exploiting a specific resource compared to a generalist feeder by developing manoeuvres that enhance feeding success⁴⁰, or through increased knowledge of areas and times of abundance of specific prey⁴¹. The importance of landscape (or seascape for marine mammals) knowledge and social interactions in explaining resource use variations has been the focus of multiple recent studies in both terrestrial and marine mammals^{42,43}. However, such variation arising from phenotypic traits may not be pronounced in a low-competition environment, and may emerge only when intraspecific competition for preferred resources intensifies⁶. Whether the observed differences in diet and degree of specialty among fin whales in our study resulted from particular functional traits is unknown given the lack of information about age, site fidelity, or stability of individual diets through time.

A reduction in prey availability may lead to increased specialization, or alternatively to diversification of diet, in both cases resulting in a widening of the population's trophic niche³. Morphological, behavioral, and physiological traits can affect the capacity of individuals to use different resources⁷. Fin whales are filter feeders that engulf large prey/water quantities during lunges⁴⁴. This feeding strategy requires a high degree of physiological adaptation and is energetically costly, so it is efficient only with schooling pelagic prey that have limited escape capacities⁴⁵. This likely limits niche expansion of fin whales toward diets that include non-gregarious, larger prey. The slight increase observed in nitrogen isotopic ratios of fin whales over the course of the study period may reflect this limitation on ingestion of larger prey, but also the inclusion of new zooplankton species from slightly higher trophic positions (Fig. 2). Niche expansion through diet diversification is also constrained by interspecific competition⁴⁶. Individual niche expansion through the addition of new resources will only be beneficial if additional costs incurred from the interspecific competition are lower than the energy gains provided by exploiting new resources (e.g., decrease of intraspecific competition).

The shift we observed in fin whale diet occurred during a period of documented environmental change in the EGSL²², which is suggested to have reduced prey availability, and enhanced the potential for intraspecific and interspecific competition. During this period, demographic changes were noted in a number of marine mammal species, which might have direct bearing on intra- and interspecific competition. In the case of fin whales, an increase in intraspecific competition as a direct consequence of an increase in fin whale abundance over the study period was deemed unlikely given that their numbers have been declining since the early 2000s in the Gulf of St. Lawrence^{34,47}. However, intraspecific competition may have arisen from a reduction in the number or size of prey patches, and an increased competition for the same space/resources. Several species of marine mammals, seabirds and fish are also known consumers of some of the forage species targeted by fin whales¹⁹. Species such as harp seals and grey seals have substantially increased in abundance over the past decades^{23,24}. However, the degree of interspecific competition for prey resources during the study period remains largely unknown, and may require further consideration in future studies.

The coincidence between the observed shift in fin whale diet and the change in preservation method (from DMSO to deep-freeze) was noted and closely examined. The correction factors for this effect were derived specifically for fin whales and other Balaenopteridae⁴⁸. In order for the results to be a total artifact of the methodology, they would need to be systematically biased upwards in the case of carbon isotopic ratios and downward in the case of nitrogen isotopic ratios. However, our experimental studies based on 24 individuals where pairs of samples were preserved under both conditions, did not produce a mean under-correction for ¹³C, and a mean over-correction for ¹⁵N. While the application of a correction factor might have increased variability in the results, we believe that a directional bias in our corrections remains unlikely.

The diversification of fin whale diets after 2001 likely occurred in response to a decrease in Arctic krill abundance or availability during this period of warming oceanographic conditions²⁰ and community changes⁴⁵. Krill species in the EGSL are composed of two genera exhibiting distinct thermal niches⁵⁰ and ecology^{51,52}. While total krill biomass changed little over our study period, krill composition shifted progressively toward a dominance of the more temperate species, the northern krill⁴⁹. From 1999 to 2008, the biomass of Arctic krill declined by almost 2.5-fold, with egg production by this species dropping from > 90% to ~ 40% of total production⁴⁹. Northern krill is three times larger than Arctic krill but has lower lipid contents and forms more diffuse and deeper swarms⁵³, affecting both the quality and the quantity of energy transferred to consumers.

Little is known about the suitability of the Estuary or Gulf of St. Lawrence as a foraging ground for fin whales or other rorquals during the 1990s or 2000s compared to earlier or later years. Nonetheless, a recent bioenergetic study of a close relative—the blue whale—with similar biomechanics⁴⁵, concluded that feeding in the EGSL may lead to a positive energy balance for blue whales, and that the potential for energy gain was higher when feeding on northern krill compared to Arctic krill, regardless of feeding depth⁵⁴. However, densities of northern krill that are worth exploiting by fin or blue whales might be less frequently encountered than for Arctic krill, even during the warming period, reducing the overall benefit of feeding on northern krill in the EGSL⁵⁵. According to optimal foraging theory, an individual should aim at maximizing net energy intake in a relatively predictable environment by limiting search time on less valuable species⁵⁶. Accordingly, fin whales can alter diet composition or move among foraging habitats to meet their energetic needs. Changes in the marine environment at the turn of the twenty-first century likely reduced the predictability of fin whale foraging habitat, resulting in a modification of their realized trophic niches both at the individual and population level, and in an apparent change in the relative use of the EGSL for foraging. While the time spent feeding in the EGSL cannot be ascertained, our diet estimates indicate a major increase in the proportion of capelin/herring from the Gulf of St. Lawrence in their diet in 2002 and following years, suggesting a more extensive use of the Gulf at that period. A similar decrease in the use of the St. Lawrence Estuary has also been documented in foraging blue whales, a krill specialist^{16,20}. Together, these observations suggest a decline in the quality of the foraging habitat for fin and blue whales. The decline in fin whale abundance in the Gulf of St. Lawrence starting in the early 2000s, which was exacerbated starting around 2010 and associated with a decline in krill biomasses⁵⁷, supports this hypothesis. Year 2010 marked the beginning of extremes in warmth and light ice conditions in the EGSL and other ecosystems of the North Atlantic²⁰. These changes in ecosystem conditions coincided with changes in reproduction, body condition, survival rates, or distribution not only of fin whales, but of a number of other marine mammal species including St. Lawrence Estuary beluga, humpback whales, and North Atlantic right whales^{47,57–59}.

As capital breeders, fin whales rely largely on endogenous reserves accumulated during the feeding season for fueling the costs of reproduction and calving. For these species, the quantity and quality of food resources are determinant of the energy surplus accumulated and can greatly influence their fitness¹². The decline observed in the abundance of fin whales in the EGSL since the early 2000s, which was also accompanied by lower recruitments and survival, support our conclusions about feeding conditions after 2001 being generally unfavorable for fin whales, and persisting beyond our study period^{34,57}. Fin whales accumulate energy reserves as lipid stored

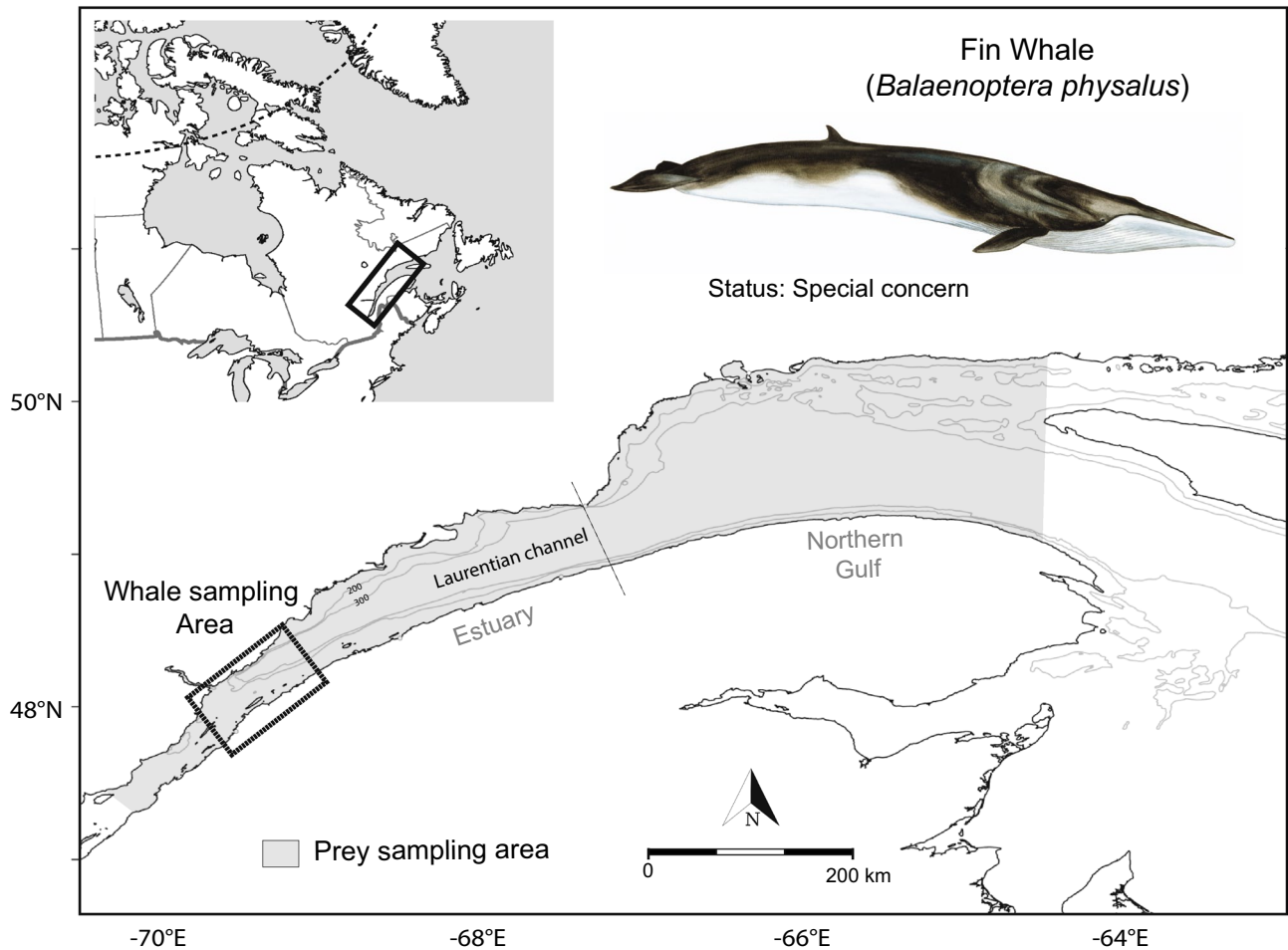


Figure 6. Sampling area where fin whales (black square) and potential prey (shade area) were sampled between 1998 and 2006. The dashed line indicates the boundary between the Estuary and Gulf of St. Lawrence. Map was produced by the authors with R (v3.6.2, <https://www.r-project.org/>) using a bathymetry data provided by the Canadian Hydrographic Service. Fin whale drawing was kindly provided by R. Michaud.

primarily in their blubber layer in the form of FAs assembled in triacylglycerol. A recent study in St. Lawrence Estuary beluga indicates that the absolute abundance of essential FAs can be used as a proxy for body condition⁵⁸. Our study indicates a progressive increase in the relative abundance of major essential FAs from 1998 to 2000, and leveling off over the rest of our study period until 2006 (Fig. 3c). The lack of information about lipid contents in our study precluded us from determining whether this trend was related to changes in the abundance of specific FAs and thus, whether fin whale body condition changed over time. Further sampling of fin whales in more recent years would help determine whether the changes in habitat use and vital rates documented recently in the segment of the fin whale population using the St. Lawrence have physiological foundations⁵⁷, as recently demonstrated for St. Lawrence Estuary beluga⁵⁸.

To conclude, using stable isotope and FAs analyses, we highlight the importance of going beyond population mean diets to understand population dynamics of generalist feeders, and their response to environmental variability. In the context of the rapidly changing climate and the uncertainty about the distribution range and population structure of fin whales in the western North Atlantic²⁰, our findings underscore the need for further research on current population-level and individual trophic niche and habitat use, and the importance of accounting for interindividual variability in feeding strategies when implementing conservation measures.

Methodology

Field sampling. We collected a total of 114 biopsies from 99 fin whales sampled over a nine-year period (1998–2006) in the St. Lawrence Estuary, Canada, during June to November when they and other marine mammal species aggregate to feed intensively (Fig. 6)⁶⁰. We identified individuals using pigmentation patterns, scars, and shape of the dorsal fin⁶¹, except for a few individuals (~8%) where pictures were not available or were of insufficient quality. For individuals known to have been sampled twice in a given year, only one randomly-selected biopsy was used for analyses to avoid pseudo-replication. The few individuals that were resampled two ($n=6$) or three times ($n=1$) over the study period were included in the analyses. Sex was determined genetically⁶² and revealed a similar proportion of males and females in our sample (47.5% and 52.5%, respectively).

We obtained biopsies by remotely projecting a dart (40 mm in length and 8 mm in diameter) from a 5–8 m vessel. Given the thickness of the skin and blubber layer in fin whales (5 to 25 cm depending on location on the body^{63,64}), blubber samples likely included only the outer blubber layer. From 1998 to 2001, the epidermis was separated from the blubber and preserved in a dimethyl sulfoxide solution (DMSO, 20% v/v) with deionized water saturated with NaCl, frozen at $-20\text{ }^{\circ}\text{C}$, while blubber was frozen directly at $-20\text{ }^{\circ}\text{C}$. Starting in 2002, both the skin and blubber were separated and frozen directly. The biopsy protocol was reviewed and approved by the Canadian Council on Animal Care committee from Simon Fraser University (Number IML-16A), and research conducted under the Fisheries Act permit DFO-QUE18-2002, R2003-003, DFO-QUE10-2004 and SAGMP-2006-738. We confirm that all sampling was performed on wild animals in accordance with these committee guidelines and regulations. In addition, we confirm that all methods are reported in accordance with ARRIVE guidelines 2.0 (<https://arriveguidelines.org>).

We also sampled all potential prey species that, may be part of the fin whale diet and are locally abundant. Prey were sampled during various research cruises conducted mostly over the same period as fin whales were biopsied (April to November 1999–2005; Table 1). The prey included four zooplankton species: amphipods (*Themisto* spp.); Arctic krill (*Thysanoessa* spp.); calanoid copepods (*Calanus* spp.) and northern krill (*Meganyctiphanes norvegica*), as well as three forage fish species: Atlantic herring; capelin and sandlance. When available, we selected prey from multiple locations in both the Estuary and the northern part of the Gulf of St. Lawrence (see Fig. 6) and over multiple years to account for potential movements of fin whales during the feeding season, and for spatial or inter-annual variations in prey isotopic and FA signatures (Table 1). We sampled and processed prey following methods outlined in Lesage et al.³⁵. Briefly, zooplankton species were caught using Bongo nets (333 μm mesh size), while fish were captured in bottom trawls or weir nets and kept at $-20\text{ }^{\circ}\text{C}$ until analyses.

In the laboratory, we identified, measured ($\pm 0.1\text{ cm}$; standard fork length; fish only) and weighted ($\pm 0.1\text{ g}$) individual prey items. For stable isotope analyses, we excised a small piece of muscle tissue from frozen specimens, except copepods for which the whole individual was used ($N_{\text{total}} = 427$, Table 1). For fatty acid analyses, we used a measured subsample of the whole homogenized specimen ($N_{\text{total}} = 242$, Table 1).

Stable isotope analyses. When the chemical analyses were conducted for this study, the need to analyze aliquots separately as the best way to deal with the effect of lipid-extraction on nitrogen isotope ratios had not yet emerged from the literature^{65–67}. As a result, all whale skin and prey samples were lipid-extracted using the Folch method and a chloroform/methanol solvent mix (2:1, v/v) following the protocol outlined in Lesage et al.³⁵. Isotopic signatures were lipid-corrected for this effect and that of DMSO (see Data analysis; see also Newsome et al.⁶⁷).

Stable carbon and nitrogen isotope ratios were determined using a continuous-flow stable-isotope mass spectrometer coupled to a Carlo Erba elemental analyzer (CHNS-O EA1108). Carbonates from Vienna Pee Dee Belemnite limestone and atmospheric N were used as standards for $\delta^{13}\text{C}$ and $\delta^{15}\text{N}$, respectively. Stable isotopes are expressed in δ notation as the deviation from international standards in parts per thousand (‰) according to the following equation:

$$\delta X = [(R_{\text{sample}}/R_{\text{standard}}) - 1] \times 1000 \quad (1)$$

where δX is ^{13}C or ^{15}N and R is the corresponding $^{13}\text{C}/^{12}\text{C}$ or $^{15}\text{N}/^{14}\text{N}$ ratio. Analytical error based on replicate analyses of samples and laboratory standards ($n = 101$) was 0.11‰ for $\delta^{13}\text{C}$ and 0.12‰ for $\delta^{15}\text{N}$.

Fatty acid analyses. Lipid was quantitatively extracted from a 1.5 g homogenate of whale blubber or homogenized prey using a modified Folch procedure following the protocol described in Budge et al.⁶⁸. Briefly, we used a solution of 2:1 chloroform:methanol with 0.01% BHT (v/v/w) for lipid extraction and determined total lipid recovery gravimetrically after evaporation. We prepared FA methyl esters (FAME) using Hilditch reagent (0.5 N H_2SO_4 in methanol) and methylene chloride heated at $100\text{ }^{\circ}\text{C}$ for 1 h. We analyzed FAMES in duplicate using a Perkin-Elmer Autosystem II capillary gas chromatograph with silica column coated with 50% cyanopropyl polysiloxane (0.25 μm film thickness; J&W DB-23; Folsom, CA) coupled to a flame ionization detector and using Turbochrome 4 software (PE Nelson). The FAs and isomers were identified from a number of validated sources according to Iverson et al.⁶⁹. FAs are expressed as mass percent of total FAs and described using the shorthand nomenclature of C:DnX, where C is the number of carbon atoms, D is the number of double bonds, and nX indicates the position of the double bond closest to the terminal methyl group.

Data analyses. To account for lipid extraction and DMSO effects on $\delta^{15}\text{N}$ values, we applied mathematical correction factors explicitly developed for the skin of fin whales and other *Balaenopteridae*³⁴ and for the muscle of fish sampled in our study area⁷⁰. In the absence of such correction factors for zooplankton species, and given the similarity in the C:N ratios between fish and zooplankton (see Table 1), we assumed mean enrichment of $\delta^{15}\text{N}$ values as a result of lipid-extraction to be similar for zooplankton and fish⁷⁰.

As the first step to data analysis, we examined prey stable isotope and FA signatures for potential effects of sampling location (Estuary vs Gulf) and sampling year using permutational multivariate analyses of variance (PERMANOVA)⁷¹. The extended dietary FAs, i.e., FAs entirely or mostly derived from diet (see Iverson et al.²⁷), were used in this analysis to maximize the potential for discriminating among the different prey species. We combined prey that were similar in composition based on PERMANOVA results (and pairwise comparisons), and which shared ecological similarities²⁶. We evaluated significance for all tests using the Benjamini & Yekutieli adjustment method to limit type I error and performed PERMANOVA using Euclidean distance, 9999

permutations and partial sum of squares. Results were visualized using nMDS. We identified which FAs were responsible for species differentiation using a SIMPER exploratory analysis and Pearson correlations ($r > 0.6$)⁷².

We used a linear mixed model (Lmer4 package) to test for potential sex effects in fin whale isotopic signatures⁷³, using year and season as covariates, and $\delta^{13}\text{C}$ and $\delta^{15}\text{N}$ values separately. We used generalized additive models (GAMs; R package “mgcv”) to examine seasonal (Julian day) and long-term changes in isotopic signatures over our study period (1998 to 2006). Years and Julian day were included in the GAM as covariates using penalized cubic regression spline smooth. Parameters were estimated using the ‘mgcv’ package with the restricted maximum likelihood method (REML)⁷⁴. Given the large number of FAs to consider, we used a two-way PERMANOVA (Sex x Year) to explore potential differences in FA signatures among fin whales. FAs contributing to these differences were identified using a SIMPER analysis, and were then examined for long-term trends using GAMs. All analyses were performed using the R programming language (v3.6.2, R core team 2021⁷⁵). Data are presented as mean \pm standard deviation. Fin whale and prey stable isotope and FA data are available in supplementary data online and on permanent repository (please see the section “Data accessibility” for details and link).

Diet estimation. A mean diet estimate was calculated for fin whales over our nine-year study period using stable isotopes and mixing models (see below). However, given temporal structuring was expected in our database, we also explored natural groupings in isotopic signatures among individual whales using hierarchical cluster analysis. FAs were not included in this analysis given that their metabolism and differential deposition is poorly understood for tissues of cetaceans. We determined the adequate number of clusters from the Dunn’s index (R package “clv” version 2.2), and validated the clustering results using discriminant functions analysis (R package “MASS” version 7.3).

We then estimated diet composition using a Bayesian stable isotope mixing model (MixSIAR version 3.1.10⁷⁶), which explicitly accounts for the uncertainty in isotopic source signatures and trophic discrimination factors (TDFs)^{76,77}. There are currently no TDFs specific to fin whales that are based on controlled studies, but those that have been estimated for cetaceans vary from 0.5 to 1.3 for carbon, and 1.5–2.5 for nitrogen^{16,18,78–80}. We used a median value of $1.0 \pm 0.5\%$ for carbon and $1.7 \pm 0.5\%$ for nitrogen; the large standard deviations associated with the TDFs are meant to recognize the current uncertainty in these values. In addition, the proposed TDFs are also consistent with the 1.3–1.9% TDF value for $\Delta^{15}\text{N}$ predicted by Caut et al.⁸¹ based on the isotopic value of fin whale hypothetical prey. We used a non-informative Dirichlet prior distribution and no concentration dependencies. The model was set as “extreme” with process error only and using groups as a fixed effect and individuals as a random effect⁸². Gelman–Rubin and Geweke metrics confirmed model convergence.

While estimated TDFs are available for stable isotopes, calibration coefficients for the predictable deposition of FAs into the blubber of cetaceans are largely unknown, limiting the use of quantitative FA signature analysis (QFASA) for diet quantification in these taxa⁶⁵. As a result, diet based on FA composition (using the extended FA subset²⁷) were only qualitative in this study⁶⁸. Interannual, seasonal and sex-specific patterns were examined using PERMANOVA, and the FAs responsible for these variations were visualized using ordination methods.

Individual specialization. A specialization index (ϵ)⁸³ was estimated based on compositional diet estimates obtained from isotopic mixing models^{84,85}. Briefly, ϵ was calculated as the distance between a hypothetical diet vector of an ultra-generalist consumer (i.e., feeding equally on all prey resources) and the estimated diet for each fin whale in an Euclidean space. The specialization index varied between 0 and 1, where 0 corresponded to an ultra-generalist and 1, to an ultra-specialist diet. Specialization indices are presented as means \pm associated standard deviations (SD).

Data availability

All datasets (i.e., isotopic and fatty acid signatures) that support the findings of this study as well as supplementary figures and tables are available online as supplemental data, in the following Mendeley data repository (<https://doi.org/10.17632/6nxhix9gbw.1>) or from the corresponding author upon reasonable request.

Received: 23 March 2021; Accepted: 28 July 2021

Published online: 25 August 2021

References

- Hutchinson, G. E. Concluding remarks. *Cold Spring Harb. Symp. Quant. Biol.* **22**, 415–427 (1957).
- Bolnick, D. I. *et al.* The ecology of individuals: Incidence and implications of individual specialization. *Am. Nat.* **161**, 1–28 (2003).
- Araújo, M. S., Bolnick, D. I. & Layman, C. A. The ecological causes of individual specialisation. *Ecology* **14**, 948–958 (2011).
- Kassen, R. The experimental evolution of specialists, generalists, and the maintenance of diversity. *J. Evol. Biol.* **15**, 173–190 (2002).
- Clavel, J., Julliard, R. & Devictor, V. Worldwide decline of specialist species: Toward a global functional homogenization?. *Front. Ecol. Environ.* **9**, 222–228 (2011).
- Svanbäck, R. & Bolnick, D. I. Intraspecific competition drives increased resource use diversity within a natural population. *Proc. R. Soc. B Biol. Sci.* **274**, 839–844 (2007).
- Tinker, M. *et al.* Structure and mechanism of diet specialization: Testing models of individual variation in resource use with sea otters. *Ecology* **15**, 475–483 (2012).
- Newsome, S. D. *et al.* The interaction of intraspecific competition and habitat on individual diet specialization: A near range-wide examination of sea otters. *Oecologia* **178**, 45–59 (2015).
- Layman, C. A., Newsome, S. D. & Crawford, T. G. Individual-level niche specialization within populations: Emerging areas of study. *Oecologia* **178**, 1–4 (2015).
- Moore, S. E., Haug, T., Vikingsson, G. A. & Stenson, G. B. Baleen whale ecology in arctic and subarctic seas in an era of rapid habitat alteration. *Prog. Oceanogr.* **176**, 102–118 (2019).
- Møller, E. F. & Nielsen, T. G. Borealization of Arctic zooplankton - Smaller and less fat zooplankton species in Disko Bay, Western Greenland. *Limnol. Oceanogr.* **65**, 1175–1188 (2020).

12. COSEWIC. *COSEWIC Assessment and Status Report on the Fin Whale Balaenoptera physalus, Atlantic Population and Pacific Population, in Canada*. xv + 72 (COSEWIC, 2019).
13. Kawamura, A. A review of food of balaenopterid whales. *Sci. Rep. Whales Res. Inst.* **32**, 155–197 (1980).
14. Baumgartner, M. F. & Mate, B. R. Summertime foraging ecology of North Atlantic right whales. *Mar. Ecol. Prog. Ser.* **264**, 123–135 (2003).
15. Silva, M. A., Prieto, R., Jonsen, I., Baumgartner, M. F. & Santos, R. S. North Atlantic blue and fin whales suspend their spring migration to forage in middle latitudes: building up energy reserves for the journey?. *PLoS ONE* **8**, e76507. <https://doi.org/10.1371/journal.pone.0076507> (2013).
16. Gavrilchuk, K. *et al.* Trophic niche partitioning among sympatric baleen whale species following the collapse of groundfish stocks in the Northwest Atlantic. *Mar. Ecol. Prog. Ser.* **497**, 285–301 (2014).
17. Aguilar, A. & Garcia-Vernet, R. Fin whale. in *Encyclopedia of Marine Mammals* (eds Würsig, B., Thewissen, J. G. M., Kovacs, K. M.) 368–371 (Elsevier, 2018).
18. Silva, M. A. *et al.* A stable isotopes reveal winter feeding in different habitats in blue, fin and sei whales migrating through the Azores. *R. Soc. Open Sci.* **6**, 181800. <https://doi.org/10.1098/rsos.181800> (2019).
19. Savenkoff, C. *et al.* Changes in the northern Gulf of St Lawrence ecosystem estimated by inverse modelling: Evidence of a fishery-induced regime shift?. *Est. Coast. Shelf Sci.* **73**, 711–724 (2007).
20. Galbraith, P. S. *et al.* Physical oceanographic conditions in the gulf of St. Lawrence during 2019. *Can. Sci. Adv. Sec. Res. Doc.* **2020/043**, iv + 9 (2020).
21. Myers, R. A. & Worm, B. Extinction, survival or recovery of large predatory fishes. *Philos. Trans. R. Soc. Lond. B Biol. Sci.* **360**, 13–20 (2005).
22. Plourde, S. *et al.* Ecosystem perspective on changes and anomalies in the Gulf of St. Lawrence: A context in support of the management of the St. Lawrence beluga whale population. *Can. Sci. Adv. Sec. Res. Doc.* **2013/129**, v + 29 (2014).
23. Hammill, M. O., Stenson, G. B., Doniol-Valcroze, T. & Mosnier, A. Conservation of northwest Atlantic harp seals: Past success, future uncertainty?. *Biol. Conserv.* **192**, 181–191 (2015).
24. Stenson, G. B., Haug, T. & Hammill, M. O. Harp seals: Monitors of change in differing ecosystems. *Front. Mar. Sci.* **7**, 738. <https://doi.org/10.3389/fmars.2020.569258> (2020).
25. Comtois, S., Savenkoff, C., Bourassa, M. N., Brêthes, J. C. & Sears, R. Regional distribution and abundance of blue and humpback whales in the Gulf of St. Lawrence. *Can. Tech. Rep. Fish. Aquat. Sci.* **2877**, viii+8 (2010).
26. Phillips, D. L. *et al.* Best practices for use of stable isotope mixing models in food-web studies. *Can. J. Zool.* **835**, 823–835 (2014).
27. Iverson, S. J., Field, C., Don Bowen, W. & Blanchard, W. Quantitative fatty acid signature analysis: A new method of estimating predator diets. *Ecol. Monogr.* **74**, 211–235 (2004).
28. Arregui, M., Borrell, A., Víkingsson, G., Ólafsdóttir, D. & Aguilar, A. Stable isotope analysis of fecal material provides insight into the diet of fin whales. *Mar. Mamm. Sci.* **34**, 1059–1069 (2018).
29. Bourdages, H. *et al.* Preliminary results from the ecosystemic survey in August 2019 in the Estuary and northern Gulf of St. Lawrence. *Can. Sci. Adv. Sec. Res. Doc.* **2020/009**, iv+93 (2020).
30. Lesage, V., Lair, S., Turgeon, S. & Béland, P. Diet of St. Lawrence Estuary Beluga (*Delphinapterus leucas*) in a changing ecosystem. *Can. Field Nat.* **134**, 21–35 (2020).
31. Aubin, D. S., Smith, T. G. & Geraci, J. R. Seasonal epidermal molt in beluga whales, *Delphinapterus leucas*. *Can. J. Zool.* **68**, 359–367 (1990).
32. Busquets-Vass, G. *et al.* Estimating blue whale skin isotopic incorporation rates and baleen growth rates: Implications for assessing diet and movement patterns in mysticetes. *PLoS ONE* **12**, e0177880. <https://doi.org/10.1371/journal.pone.0177880> (2017).
33. Vighi, M., Borrell, A. & Aguilar, A. Stable isotope analysis and fin whale subpopulation structure in the eastern North Atlantic. *Mar. Mam. Sci.* **32**, 535–551 (2016).
34. Ramp, C., Delarue, J., Bérubé, M., Hammond, P. S. & Sears, R. Fin whale survival and abundance in the Gulf of St. Lawrence, Canada. *Endanger. Species Res.* **23**, 125–132 (2014).
35. Lesage, V., Hammill, M. O. & Kovacs, K. M. Marine mammals and the community structure of the Estuary and Gulf of St. Lawrence, Canada: Evidence from stable isotope analysis. *Mar. Ecol. Prog. Ser.* **210**, 203–221. <https://doi.org/10.3354/meps210203> (2001).
36. Ryan, C. *et al.* Prey preferences of sympatric fin (*Balaenoptera physalus*) and humpback (*Megaptera novaeangliae*) whales revealed by stable isotope mixing models. *Mar. Mamm. Sci.* **30**, 242–258 (2014).
37. Flinn, R. D., Trites, A. W., Gregr, E. J. & Perry, R. I. Diets of fin, sei, and sperm whales in British Columbia: An analysis of commercial whaling records, 1963–1967. *Mar. Mamm. Sci.* **18**, 663–679 (2002).
38. Benteleb, I. *et al.* Foraging ecology of Mediterranean fin whales in a changing environment elucidated by satellite tracking and baleen plate stable isotopes. *Mar. Ecol. Prog. Ser.* **438**, 285–302 (2011).
39. Bolnick, D. I. & Fitzpatrick, B. M. Sympatric speciation: Models and empirical evidence. *Annu. Rev. Ecol. Evol. Syst.* **38**, 459–487 (2007).
40. Goldbogen, J. A. *et al.* Underwater acrobatics by the world's largest predator: 360 rolling manoeuvres by lunge-feeding blue whales. *Biol. Lett.* **9**, 20120986. <https://doi.org/10.1098/rsbl.2012.0986> (2013).
41. Abrahms, B. *et al.* Memory and resource tracking drive blue whale migrations. *Proc. Natl. Acad. Sci.* **116**, 5582–5587 (2019).
42. Lesmerises, F., Johnson, C. J. & St-Laurent, M. H. Landscape knowledge is an important driver of the fission dynamics of an alpine ungulate. *Anim. Behav.* **140**, 39–47 (2018).
43. Serres, A. & Delfour, F. Social behaviors modulate bottlenose dolphins (*Tursiops truncatus*) breathing rate. *Anim. Cogn.* **6**, 127–140 (2019).
44. Goldbogen, J. A. *et al.* Kinematics of foraging dives and lunge-feeding in fin whales. *J. Exp. Biol.* **209**, 1231–1244 (2006).
45. Potvin, J., Goldbogen, J. A. & Shadwick, R. E. Metabolic expenditures of lunge feeding rorquals across scale: Implications for the evolution of filter feeding and the limits to maximum body size. *PLoS ONE* **7**, e44854. <https://doi.org/10.1371/journal.pone.0044854> (2012).
46. Sexton, J. P., McIntyre, P. J., Angert, A. L. & Rice, K. J. Evolution and ecology of species range limits. *Ann. Rev. Ecol. Evol. Syst.* **40**, 415–436 (2009).
47. Schleimer, A. *et al.* Decline in abundance and apparent survival rates of fin whales (*Balaenoptera physalus*) in the northern Gulf of St. Lawrence. *Ecol. Evol.* **9**, 4231–4244 (2019).
48. Lesage, V. *et al.* Stable isotopes and trace elements as indicators of diet and habitat use in cetaceans: predicting errors related to preservation, lipid extraction, and lipid normalization. *Mar. Ecol. Prog. Ser.* **419**, 249–265 (2010).
49. Plourde, S., Winkler, G., Joly, P., St-Pierre, J. F. & Starr, M. Long-term seasonal and interannual variations of krill spawning in the lower St. Lawrence estuary, Canada, 1979–2009. *J. Plankton Res.* **33**, 703–714 (2011).
50. Plourde, S. *et al.* Daytime depth and thermal habitat of two sympatric krill species in response to surface salinity variability in the Gulf of St Lawrence, eastern Canada. *ICES J. Mar. Sci.* **71**, 272–281 (2014).
51. Cabrol, J. *et al.* Seasonal and large-scale spatial variability of the energy reserves and the feeding selectivity of *Meganctiphanes norvegica* and *Thysanoessa inermis* in a Subarctic environment. *Prog. Oceanogr.* **179**, 102203 (2019).
52. Cabrol, J. *et al.* Functional feeding response of Nordic and Arctic krill on natural phytoplankton and zooplankton. *J. Plankton Res.* **42**, 239–252 (2020).

53. Cabrol, J. *et al.* Trophic niche partitioning of dominant North-Atlantic krill species, *Meganyctiphanes norvegica*, *Thysanoessa inermis*, and *T. raschii*. *Limnol. Oceanogr.* **64**, 165–181 (2019).
54. Guilpin, M. *et al.* Repeated vessel interactions and climate- or fishery-driven changes in prey density limit energy acquisition by foraging blue whales. *Front. Mar. Sci.* **7**, 626. <https://doi.org/10.3389/fmars.2020.00626> (2020).
55. Guilpin, M. Étude des interactions bioénergétiques entre le rorqual bleu *Balaenoptera musculus* et le krill dans l'estuaire et le golfe du Saint-Laurent. *Doctoral Thesis*. (Université du Québec à Rimouski, 2020).
56. MacArthur, R. H. & Pianka, E. R. On optimal use of a patchy environment. *Am. Nat.* **100**, 603–609 (1966).
57. Schleimer, A. *et al.* Spatio-temporal patterns in fin whale *Balaenoptera physalus* habitat use in the northern Gulf of St. Lawrence. *Mar. Ecol. Prog. Ser.* **623**, 221–234 (2019).
58. Bernier-Graveline, A. *et al.* Lipid metabolites as indicators of body condition in highly contaminant-exposed belugas from the endangered St. Lawrence Estuary population (Canada). *Environ. Res.* **192**, 110272. <https://doi.org/10.1016/j.envres.2020.110272> (2020).
59. Kershaw, J. L. *et al.* Declining reproductive success in the Gulf of St. Lawrence's humpback whales (*Megaptera novaeangliae*) reflects ecosystem shifts on their feeding grounds. *Glob. Change Biol.* **10**, 1–15. <https://doi.org/10.1111/gcb.15466> (2020).
60. Mosnier, A. & Gosselin, J.-F. Seasonal distribution and concentration of four baleen whale species in the St. Lawrence Estuary based on 22 years of DFO observation data. *Can. Sci. Adv. Sec. Res. Doc.* **2020/053**, iv+119 (2020).
61. Gowans, S., Simard, P., Giard, J., Vashro, C. & Sears, R. Photographic identification of fin whales (*Balaenoptera physalus*) off the Atlantic coast of Nova Scotia, Canada. *Mar. Mamm. Sci.* **21**, 323–326 (2005).
62. Bérubé, M. & Palsbøll, P. Identification of sex in cetaceans by multiplexing with three ZFX and ZFY specific primers. *Mol. Ecol.* **5**, 283–287 (1996).
63. Williams, R. *et al.* Evidence for density-dependent changes in body condition and pregnancy rate of North Atlantic fin whales over four decades of varying environmental conditions. *ICES J. Mar. Sci.* **70**, 1273–1280 (2013).
64. Lockyer, C. Body fat condition in Northeast Atlantic fin whales, *Balaenoptera physalus*, and its relationship with reproduction and food resource. *Can. J. Fish Aquat. Sci.* **43**, 142–147 (1986).
65. Ryan, C. *et al.* Accounting for the effects of lipids in stable isotope ($\delta^{13}\text{C}$ and $\delta^{15}\text{N}$ values) analysis of skin and blubber of *balaenopterid* whales. *Rapid Commun. Mass Spectrom.* **26**, 2745–2754 (2012).
66. Elliott, K. H., Roth, J. D. & Crook, K. Lipid extraction techniques for stable isotope analysis and ecological assays. *Method Mol. Biol.* **1609**, 9–24 (2017).
67. Newsome, S. D., Chivers, S. J. & Berman Kowalewski, M. The influence of lipid-extraction and long-term DMSO preservation on carbon ($\delta^{13}\text{C}$) and nitrogen ($\delta^{15}\text{N}$) isotope values in cetacean skin. *Mar. Mamm. Sci.* **34**, 277–293 (2018).
68. Budge, S. M., Iverson, S. J. & Koopman, H. N. Studying trophic ecology in marine ecosystems using fatty acids: A primer on analysis and interpretation. *Mar. Mamm. Sci.* **22**, 759–801 (2006).
69. Iverson, S. J., Frost, K. J. & Lang, S. Fat content and fatty acid composition of forage fish and invertebrates in Prince William Sound, Alaska: Factors contributing to among and within species variability. *Mar. Ecol. Prog. Ser.* **241**, 161–181 (2002).
70. Lesage, V. Trends in the trophic ecology of St. Lawrence beluga (*Delphinapterus leucas*) over the period 1988–2012, based on stable isotope analysis. *Can. Sci. Adv. Sec. Res. Doc.* **2013/126**, iv+26 (2014).
71. Anderson, M. J. & Walsh, D. C. PERMANOVA, ANOSIM, and the Mantel test in the face of heterogeneous dispersions: What null hypothesis are you testing?. *Ecol. Monogr.* **83**, 557–574 (2013).
72. Clarke, K. R. & Gorley, R. N. *PRIMER v7: User Manual/Tutorial* 3rd edn. (Primer-E Ltd, 2015).
73. Bates, D. M., Mächler, M., Bolker, B. & Walker, S. Fitting linear mixed-effects models using lme4. *J. Stat. Soft.* **67**, 1–48 (2015).
74. Wood, S. Mixed GAM computation vehicle with GCV/AIC/REML smoothness estimation and GAMMs by REML/PQL. in *R Package Version 1–8* (2018).
75. R Core Team. *R: A Language and Environment for Statistical Computing*. <https://www.R-project.org> (R Foundation for Statistical Computing, 2021).
76. Stock, B. C. *et al.* Analyzing mixing systems using a new generation of Bayesian tracer mixing models. *PeerJ* **6**, e5096. <https://doi.org/10.7287/peerj.preprints.26884v1> (2018).
77. Parnell, A., Inger, R., Bearhop, S. & Jackson, A. Source partitioning using stable isotopes: coping with too much variation. *PLoS Biol.* **5**, e9672. <https://doi.org/10.1371/journal.pone.0009672> (2010).
78. Borrell, A., Abad-Oliva, N., Gómez-Campos, E., Giménez, J. & Aguilar, A. Discrimination of stable isotopes in fin whale tissues and application to diet assessment in cetaceans. *Rapid Commun. Mass Spectrom.* **26**, 1596–1602 (2012).
79. Gendron, D., Aguiñiga, S. & Carriquiry, J. D. $\delta^{15}\text{N}$ and $\delta^{13}\text{C}$ in skin biopsy samples: A note on their applicability for examining the relative trophic level in three rorqual species. *J. Cetacean Res. Manag.* **3**, 41–44 (2001).
80. Giménez, J., Ramírez, F., Almunia, J., Forero, M. G. & de Stephanis, R. From the pool to the sea: Applicable isotope turnover rates and diet to skin discrimination factors for bottlenose dolphins (*Tursiops truncatus*). *J. Exp. Mar. Biol. Ecol.* **475**, 54–61 (2016).
81. Caut, S., Angulo, E. & Courchamp, F. Discrimination factors ($\Delta^{15}\text{N}$ and $\Delta^{13}\text{C}$) in an omnivorous consumer: Effect of diet isotopic ratio. *Funct. Ecol.* **22**, 255–263 (2008).
82. Stock, B. C. & Semmens, B. X. Unifying error structures in commonly used biotracer mixing models. *Ecology* **97**, 2562–2569 (2016).
83. Newsome, S. D., Yeakel, J. D., Wheatley, P. V. & Tinker, M. T. Tools for quantifying isotopic niche space and dietary variation at the individual and population level. *J. Mammal.* **93**, 329–341 (2012).
84. Nifong, J. C., Layman, C. A. & Silliman, B. R. Size, sex and individual-level behavior drive intrapopulation variation in cross-ecosystem foraging of a top-predator. *J. Anim. Ecol.* **84**, 35–48 (2015).
85. Devries, M. S., Stock, B. C., Christy, J. H., Goldsmith, G. R. & Dawson, T. E. Specialized morphology corresponds to a generalist diet: Linking form and function in smashing mantis shrimp crustaceans. *Oecologia* **182**, 429–442 (2016).

Acknowledgements

We thank Michel Moisan for collecting the samples, and the Species at Risk program from Fisheries and Oceans Canada for financially supporting this study. We also thank the technical staff from the Isotope Tracer Technologies Inc. laboratory (Ontario, CAN) for the isotopic analyses, S. Aucoin for the English revision, as well as the two anonymous reviewers for all the valuable comments. Additional support was provided by operating and equipment grants to SI (#04374) from the Natural Sciences and Engineering Research Council (NSERC, Canada).

Author contributions

V.L. developed the idea, designed the study and obtained financial support for the study; R.M. and J.G. collected the samples; SI's lab performed lipid and FA analyses and M.B. performed genetic sexing; J.C. and A.L. performed data analyses with inputs from C.N., V.L., and S.I.; J.C. and V.L. wrote the manuscript; all authors contributed to the draft manuscript and gave final approval for publication.

Competing interests

The authors declare no competing interests.

Additional information

Supplementary Information The online version contains supplementary material available at <https://doi.org/10.1038/s41598-021-96283-x>.

Correspondence and requests for materials should be addressed to C.J.

Reprints and permissions information is available at www.nature.com/reprints.

Publisher's note Springer Nature remains neutral with regard to jurisdictional claims in published maps and institutional affiliations.



Open Access This article is licensed under a Creative Commons Attribution 4.0 International License, which permits use, sharing, adaptation, distribution and reproduction in any medium or format, as long as you give appropriate credit to the original author(s) and the source, provide a link to the Creative Commons licence, and indicate if changes were made. The images or other third party material in this article are included in the article's Creative Commons licence, unless indicated otherwise in a credit line to the material. If material is not included in the article's Creative Commons licence and your intended use is not permitted by statutory regulation or exceeds the permitted use, you will need to obtain permission directly from the copyright holder. To view a copy of this licence, visit <http://creativecommons.org/licenses/by/4.0/>.

© Crown 2021