



Review

# Non-Rodent Genetic Animal Models for Studying Tauopathy: Review of *Drosophila*, Zebrafish, and *C. elegans* Models

Hoi-Khoanh Giong<sup>1,2,3</sup>, Manivannan Subramanian<sup>1,3</sup> , Kweon Yu<sup>1,2,3,\*</sup> and Jeong-Soo Lee<sup>1,2,3,\*</sup>

- <sup>1</sup> Disease Target Structure Research Center, KRIBB, 125 Gwahak-ro, Yuseong-gu, Daejeon 34141, Korea; 097068@kist.re.kr (H.-K.G.); manivannan.s80@gmail.com (M.S.)  
<sup>2</sup> KRIBB School, University of Science and Technology, 125 Gwahak-ro, Yuseong-gu, Daejeon 34141, Korea  
<sup>3</sup> Dementia DTC R&D Convergence Program, KIST, Hwarang-ro 14 gil 5, Seongbuk-gu, Seoul 02792, Korea  
\* Correspondence: kweonyu@kribb.re.kr (K.Y.); jeongsoo@kribb.re.kr (J.-S.L.); Tel.: +82-42-860-4642 (K.Y.); +82-42-860-4643 (J.-S.L.)

**Abstract:** Tauopathy refers to a group of progressive neurodegenerative diseases, including frontotemporal lobar degeneration and Alzheimer's disease, which correlate with the malfunction of microtubule-associated protein Tau (MAPT) due to abnormal hyperphosphorylation, leading to the formation of intracellular aggregates in the brain. Despite extensive efforts to understand tauopathy and develop an efficient therapy, our knowledge is still far from complete. To find a solution for this group of devastating diseases, several animal models that mimic diverse disease phenotypes of tauopathy have been developed. Rodents are the dominating tauopathy models because of their similarity to humans and established disease lines, as well as experimental approaches. However, powerful genetic animal models using *Drosophila*, zebrafish, and *C. elegans* have also been developed for modeling tauopathy and have contributed to understanding the pathophysiology of tauopathy. The success of these models stems from the short lifespans, versatile genetic tools, real-time in-vivo imaging, low maintenance costs, and the capability for high-throughput screening. In this review, we summarize the main findings on mechanisms of tauopathy and discuss the current tauopathy models of these non-rodent genetic animals, highlighting their key advantages and limitations in tauopathy research.

**Keywords:** tauopathy; pathophysiology; *Drosophila*; zebrafish; *C. elegans*; advantages; limitations



**Citation:** Giong, H.-K.; Subramanian, M.; Yu, K.; Lee, J.-S. Non-Rodent Genetic Animal Models for Studying Tauopathy: Review of *Drosophila*, Zebrafish, and *C. elegans* Models. *Int. J. Mol. Sci.* **2021**, *22*, 8465. <https://doi.org/10.3390/ijms22168465>

Academic Editors: Cristoforo Comi and Luca Magistrelli

Received: 30 June 2021  
Accepted: 4 August 2021  
Published: 6 August 2021

**Publisher's Note:** MDPI stays neutral with regard to jurisdictional claims in published maps and institutional affiliations.



**Copyright:** © 2021 by the authors. Licensee MDPI, Basel, Switzerland. This article is an open access article distributed under the terms and conditions of the Creative Commons Attribution (CC BY) license (<https://creativecommons.org/licenses/by/4.0/>).

## 1. Introduction

Tauopathy refers to a group of neurodegenerative disorders that share a common feature of neurofibrillary tangles (NFT) originating from the aggregation of abnormal hyperphosphorylated and paired helical filament (PHF) Tau proteins [1]. The term tauopathy was first coined in 1997 to describe a familial dementia characterized by abundant and widespread intracellular NFT with the absence of amyloid  $\beta$  ( $A\beta$ ) plaque deposits [2]. Since then, other neurodegenerative diseases have also been classified as tauopathy, including Alzheimer's Disease (AD), frontotemporal dementia with Parkinsonism linked to chromosome 17 (FTDP-17), cortical basal degeneration, amyotrophic lateral sclerosis, dementia pugilistica, tangle-only dementia, progressive supranuclear palsy, and Pick's disease [1,3].

Although the Tau protein was first identified almost a half century ago [4], scientists did not pay attention to this protein until the discovery of Tau as a major component of the abnormal aggregated tangles in AD patient brains a decade later [5–9]. Tau is one of the first characterized and well-known factors to maintain the stability of microtubules (MTs) in the central nervous system (CNS) [10,11]. Tau protein is subject to diverse post-translational modifications (PTMs), including glycosylation, glycation, nitration, polyamination, phosphorylation, ubiquitination, oxidation, cleavage or truncation, small ubiquitin-like modifier (SUMO) modification, and aggregation [12].

Thus far, 19 Tau-targeting therapeutic compounds have been proposed and tested based on diverse mechanisms by which Tau protein aggregation causes neurodegeneration. Unfortunately, all compounds have failed to pass phase 3 of clinical trials [13]. Therefore, tauopathies and AD, in particular, remain incurable diseases, and with the number of tauopathy-related dementias increasing every year, it is urgent to discover an effective therapeutic for tauopathy. In this review, we first summarize underlying mechanisms of tauopathy and then discuss research on tauopathy using non-rodent genetic animal models. We focus on *Drosophila*, zebrafish, and *C. elegans*, highlighting their advantages and limitations as tauopathy models in order to unveil mechanistic aspects of tauopathy and to develop novel therapeutic strategies. The most popular tauopathy model, the rodent model, has been extensively reviewed elsewhere [14] and is not covered here.

## 2. Underlying Mechanisms of Tauopathy

### 2.1. Normal Function of Tau

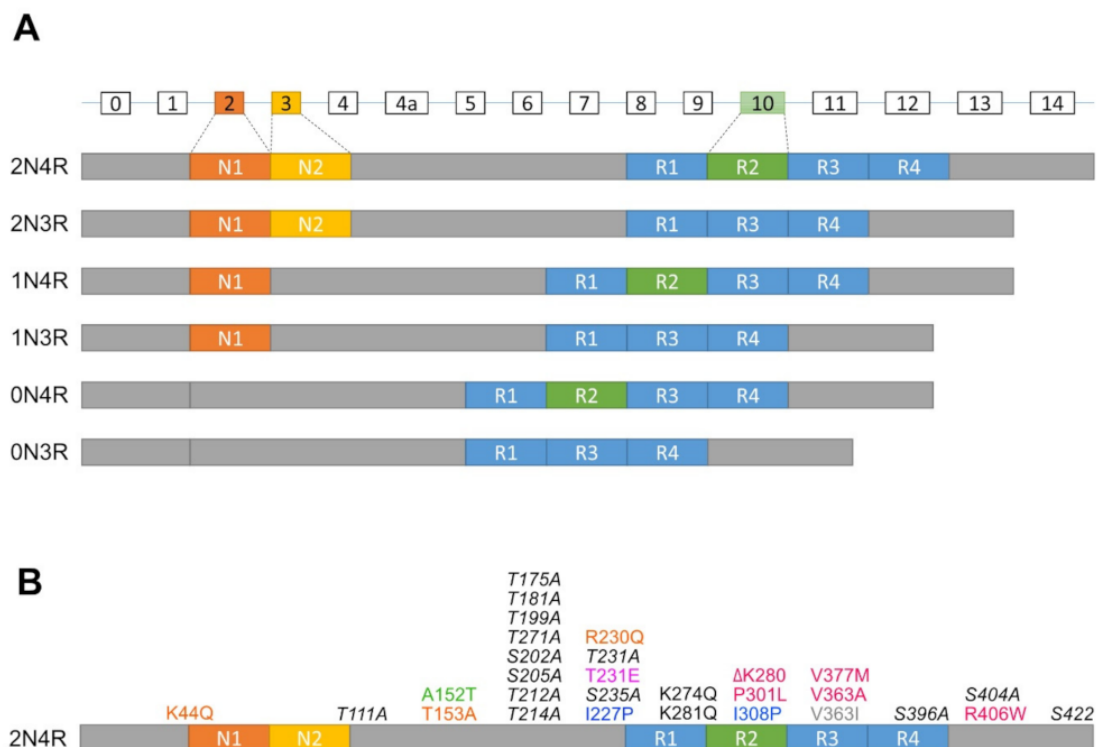
In humans, the Tau protein consists of six isoforms translated from alternatively spliced mRNAs of a single microtubule-associated protein Tau gene (*MAPT*) containing 16 exons (Figure 1A). These isoforms are classified by the combination of numbers of N (N-terminal projection) and R (microtubule-binding repeats) domains (i.e., 2N4R, 1N4R, 0N4R, 2N3R, 1N3R, and 0N3R). In particular, the number of N is determined by alternative splicing of exon 2 and 3 at the N terminal, whereas the number of R is defined by whether they contain repeat 2 encoded by exon 10 in mature mRNA [15,16]. In humans, mRNAs encoding 3R isoforms are found in both fetal and adult brains, whereas only mRNAs of 4R isoforms are found exclusively in the adult brain [15]. Moreover, the level of 3R and 4R isoforms in the adult brain is about equal to that which any disturbances are associated with neurodegeneration [17].

In general, Tau protein is ubiquitously expressed from the cell body to neurites in immature neurons but mainly found in the axon, interacting with MTs in mature neurons, where Tau regulates their stability [17]. However, Tau is also present in other cellular compartments, such as in both pre- and post-synaptic compartments [18,19]; at the post-synapse, Tau plays a role in establishing the proper localization of Fyn and is involved in regulating N-methyl-D-aspartate receptors (NMDARs) and post-synaptic density protein 95 (PSD95) complex [20,21]. In addition, Tau is found in the nucleus, where it binds to the heterochromatin and protects the integrity of DNA and RNA [22,23], and is localized in the neural plasma membrane in a MT-independent manner [24,25].

### 2.2. Phosphorylation of Tau

In AD and other tauopathies, phosphorylation of Tau is one of the main events among several PTMs that the Tau protein undergoes [26]. A 2N4R Tau usually carries approximately two phosphates per molecule [27]. Tau phosphorylation at Thr205, Thr231, and Ser396 is highly correlative with adult hippocampal neurogenesis as a compensatory mechanism to neuronal loss in AD [28]. In fact, similar Tau phosphorylation could reduce the endoplasmic reticulum (ER) stress and kinase-induced apoptosis [29,30]. However, in pathological conditions, the phosphorylation of Tau is approximately eight phosphates per molecule, an increase of three to four times more compared to normal individuals [6,26,31]. When hyperphosphorylated, Tau partially loses its binding affinity to MTs affecting their dynamics [32]. Hyperphosphorylated Tau also causes defects in axonal neurotransmitter transport, release, and uptake, thereby resulting in axon degeneration and finally neurodegeneration [33]. Therefore, Tau hyperphosphorylation is considered as an early-onset pathological process [34]. Known protein kinases and phosphatases that determine the degree of phosphorylation of Tau include glycogen synthase kinase 3 $\beta$  (GSK3 $\beta$ ), mitogen-activated protein kinase (MAPK), cyclin AMP (cAMP)-dependent protein kinase A (PKA), calmodulin kinase II (CaMK II), protein kinase (PKC), microtubule affinity regulating kinase (MARK), and protein phosphatase family, especially type 2A (PP2A) [26,35].

In the longest isoform of Tau, 2N4R, there are approximately 85 potential phosphorylation sites (80 Serine or Threonine, and 5 Tyrosine residues). Among them, there are 17 Thr-Pro or Ser-Pro motifs that are abnormally hyperphosphorylated in AD and other Tauopathies [36], and the phosphorylation of Tau at Tyr394 and Tyr18 is detected in paired helix filaments (PHFs) in the brains of AD patients [37]. A study using the mouse tauopathy model also suggests that the hyperphosphorylation of Tau at tyrosine residues correlates with Tau aggregation [38]. Although all members of the protein phosphatase family are involved in dephosphorylation of Tau, PP2A is the major phosphatase responsible for almost 70% of the Tau phosphatase activity in human brains, and a loss of function of this protein phosphatase may be a cause of disease onset [36]. Consistently, PP2A activity is decreased by 20% to 40% in AD brains [39–41].



**Figure 1.** Diagrams of isoforms and mutations of the *MAPT* gene. **(A)** The *MAPT* gene contains 16 exons (rectangles with exon numbers on top), where exons with white rectangles are constitutive whereas exon 2 (dark orange box), exon 3 (orange box) and exon 10 (green box) are subject to alternative splicing. 0N, 1N, or 2N isoform depends on the presence of exon 2 and 3, while 3R or 4R isoform is determined by the presence of exon 10. **(B)** Mutations of the *MAPT* gene used to generate tauopathy models in *Drosophila*, zebrafish and *C. elegans*. dark orange, Calpain-resistant mutations; red, reduced microtubule-binding and increased aggregation mutations; green, a reduced microtubule-binding and increased oligomerization, but not fibrillization mutation; pink, an increased phosphorylation mutation; blue, anti-aggregation mutations; grey, promote microtubule assembly and increased oligomerization, but not fibrillization mutation; black, increased disease-associated lysine acetylation mutations; italic black, phosphorylation-incompetent mutations.

### 2.3. Aggregation of Tau

Both in vitro and in vivo studies have shown that Tau aggregation occurs in a “nucleation-elongation” mechanism [42]. The initiation of Tau aggregation can be affected by motif sequences, cofactors, phosphorylation status, and cleavage. In Tau protein, there are two small fractions at the beginning of R2 and R3 domains, with VQIINK and VQIVYK motifs, respectively. These hexapeptides are essential for forming  $\beta$ -sheet structures that tightly interlink the  $\beta$ -sheets together in a steric “zippers” manner, thereby leading to Tau aggregation [42,43]. Accordingly, the disruption or reinforcement of these motifs abolish or enhance the tendency of  $\beta$ -sheet structure and Tau aggregation, respectively [44]. Tau aggregation

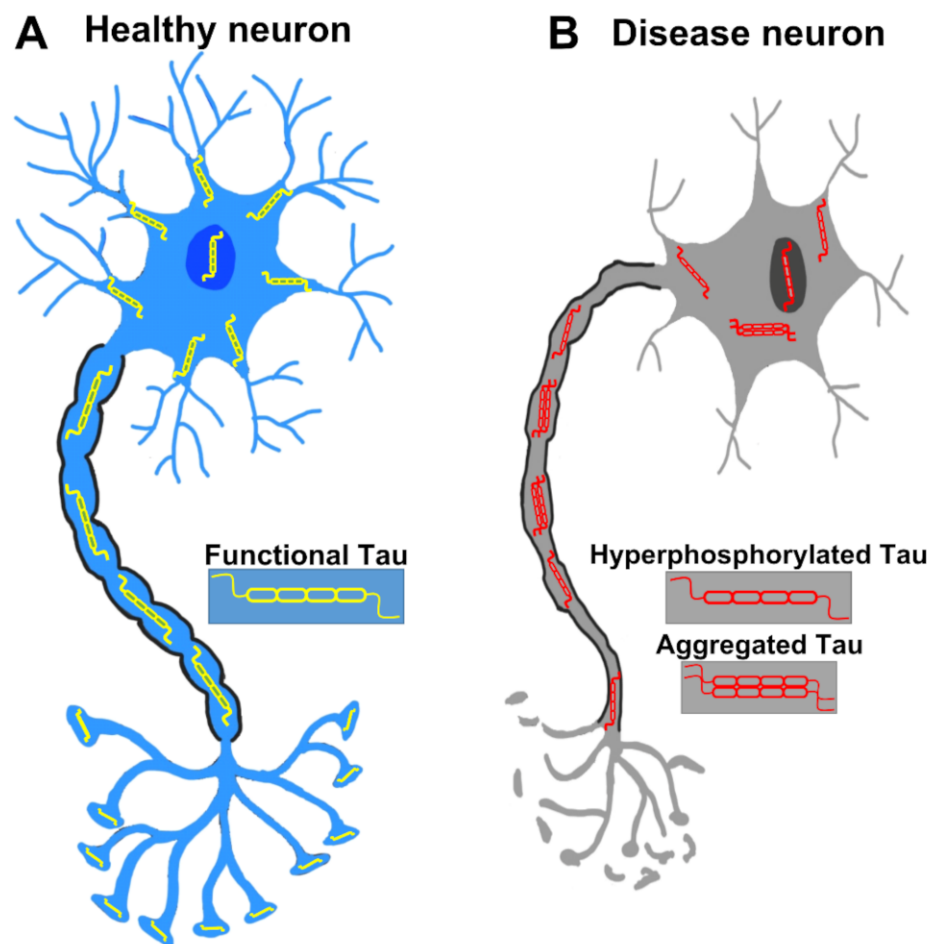
is also modulated by Tau cofactors. Negative-charged polyanions, such as glycosaminoglycans, and their sulfated forms (e.g., heparin) or RNA (e.g., polyU RNA) can promote Tau aggregation in vitro [45–48]. Another cofactor, FKBP52 (the 52 kD FK506-binding protein), also induces Tau aggregation in vitro and accelerates memory impairments in vivo [49,50].

In addition, among many post-translational modifications affecting Tau aggregation, Tau hyperphosphorylation was shown to precede aggregation significantly in patient samples and transgenic mice [51]. Such abnormal hyperphosphorylated Tau from AD brains can self-assemble into PHFs form in vitro [52]. However, it has been also shown that not all phosphorylation of Tau contributes to aggregation but rather the spatial domain of phosphorylation sites on Tau have an impact on the aggregation. For instance, the phosphorylation at Ser241 and Ser262 on the repeat domain of Tau prevents the aggregation [53], and in Sf9 cell culture, Tau is not aggregated despite the high concentration and extensive hyperphosphorylation of the protein, presumably due to the additional contribution of other factors that promote Tau aggregation [54]. Furthermore, regardless of the phosphorylation status, truncated Tau fragments containing the repeat domain are highly prone to aggregation. Human AD brains and rat transgenic models burdened with Tau fragment 151–391 develop Tau aggregation and neurofibrillary pathology [55]. Another Tau fragment, 255–368, formed by cleavage of an asparagine endopeptidase or long fragments (e.g., Tau 1–368 or 1–421), also causes neurofibrillary pathology in vitro [56,57]. In a cell model of tauopathy that expresses the  $\Delta$ K280 (a repeat-domain-mutant), Tau accelerates robust aggregation and neurodegeneration [58,59].

Of note, pre-formed PHFs can act as external seeds to accelerate the aggregation in cultured cells without an endogenous nucleation step [42]. Similarly, when preformed PHFs are injected into the mouse brain, Tau seeds initiate widespread tauopathy and cause neuronal loss in a time-dependent manner [60,61].

#### 2.4. Toxicity of Tau

Since there is a strong correlation between the presence of NFTs in the AD brain and the harshness of the memory impairment, NFTs have been suspected to be the direct culprit for neurodegeneration. However, the formation of NFTs turned out to be neither necessary nor sufficient to provoke neurodegeneration. For example, neurons with NFTs may live more than a decade in AD patients [62], which is in line with the observations from transgenic mouse models [63]. Neurons died before the formation of NFTs, and NFT-bearing neurons can survive without cellular activity defect [63]. Remarkably, in two reversible Tau expression transgenic mouse models, rTg4510 and  $\Delta$ K280, which express human Tau<sup>P301L</sup> mutation and pro-aggregation mutant, respectively, the decline in cognitive function was halted or even reversed after switching off Tau expression, regardless of the presence of NFTs. This finding strongly suggests that NFTs are not sufficient for the neurodegeneration [64–66]. Therefore, the toxicity that leads to neurodegeneration of Tau species is still under debate. Nonetheless, recent studies have indicated that Tau oligomers are the *bona fide* toxic species for neurodegeneration in tauopathy. Levels of soluble Tau oligomers in AD and PSP brains are significantly elevated [67,68], and a host of in vitro data has shown that Tau oligomers are neurotoxic [69–71]. It is also feasible that instead of being directly harmful, NFTs may alleviate the toxicity of Tau oligomers and thus protect neurons from degeneration [72]. However, it is still plausible that NFTs may be toxic by sequestering and occupying the cytosol space and thus inducing other cellular defects in the long term [73]. The normal neuron and pathological neuron in tauopathy are briefly depicted in Figure 2.



**Figure 2.** A healthy neuron and a pathological neuron in tauopathy. (A) In a healthy neuron, Tau is usually found in axons but also located in dendrites, the nucleus, the plasma membrane and synapses. (B) In the tauopathy condition, Tau undergoes PTMs such as hyperphosphorylation, resulting in the detachment from microtubules and the formation of aggregates. Tau dysfunction causes many neurodegenerative phenotypes such as pre- and post-synaptic decays, axonal degeneration, and eventually neuronal death.

### 2.5. Clearance of Tau

Clearance of excessive and pathological Tau is a critical step for neurons to maintain the homeostasis of Tau protein and prevent Tau toxicity. Tau protein is cleared mainly via proteasome- and autophagy-dependent pathways. The general structures and function of the proteasome and autophagy are extensively reviewed elsewhere [74], and only Tau-related issues will be briefly covered in this review.

#### 2.5.1. Tau Is Degraded by the Proteasome

Tau is subject to degradation by the proteasome in an ubiquitylation-dependent or -independent manner. Tau can be ubiquitylated in vitro [75,76], and the modification at K6 inhibits ubiquitin-dependent degradation by the 26S proteasome contributes to the formation of NFTs [77]. Moreover, the impaired function of the 26S proteasome has been reported in the rTg4510 mouse model where accumulated Tau<sup>P301L</sup> binds to the 26S proteasome and inhibits its hydrolyzing activity against ubiquitinated proteins [78]. Nonetheless, through different approaches, such as ATP depletion, ubiquitylation-deficient cells, knockdown of a 19S proteasomal regulator subunit, and in-vitro ubiquitylation studies, it was shown in several cell models that ubiquitylation was not required for Tau degradation by the proteasome 20S [79].

### 2.5.2. Tau Is Degraded by Autophagy

Autophagy is a process known as “self-eating” that degrades substrates by the lysosome. There are three forms of autophagy: macroautophagy, chaperone-mediated autophagy, and microautophagy. The most common and well understood is macroautophagy [80] (hereafter, “autophagy” in short). An electron microscopic analysis of brain tissues from confirmed AD patients revealed that autophagic vacuole accumulates in dystrophic neurites and is correlated with the presence of NFTs [81]. In line with this clinical observation, a large number of studies have provided evidence that Tau is significantly degraded by autophagy. Cathepsin D is a protease that degrades Tau in the lysosome. When cathepsin D was added to the rat brain homogenates, Tau degradation was observed [82], and depletion of cathepsin D advanced Tau-induced neurotoxicity in a *Drosophila* tauopathy model [83]. In addition, when hippocampal slices were treated with chloroquine, a chemical well-known to raise lysosomal pH and inhibit autophagic flux, Tau protein levels (especially the PHF1 form) were significantly increased [84]. When the autophagy gene *Atg7* was deleted in forebrain neurons in a mouse knockout model, accumulation of phosphorylated Tau, together with NFT formation, was observed with age-dependent neurodegeneration [85]. All of these studies collectively indicate that autophagy plays a key role in mediating Tau clearance.

Mutations of Tau that are covered in this review are summarized in Figure 1B.

## 3. *Drosophila* Tauopathy Model

### 3.1. Advantages

*Drosophila melanogaster* has been extensively used as an excellent model system due to their short lifespan, small size, and increased propagation. In addition, *Drosophila melanogaster* allows in-depth reverse genetic studies and large-scale forward genetic screening [86]. Approximately 70% of the genes related to disease conditions in mammals are also present in *Drosophila* [87]. Generation of loss-of-function mutants or transgenic lines for the desired gene of interest is relatively easier than other model systems [88]. Based on these advantages, *Drosophila* has been an attractive model system for studying human neurodegenerative disorders, including tauopathies [89–92], helping us to understand the molecular mechanisms underlying neurodegeneration phenotypes.

### 3.2. Current *Drosophila* Tauopathy Models

*Drosophila* has a single homologous gene to human Tau in the genome. Its protein contains five microtubule-binding domains, which are 46% and 66% similar to 3R and 4R of human Tau, respectively [93]. As a well-established genetic model, nearly 100 *Drosophila* Tau models, using at least 37 human Tau constructs, have been generated [90] (Table 1). Different human Tau isoforms, as well as numerous Tau mutants and truncated variants, were overexpressed under pan-neuronal- or eye-specific promoters using a GAL4/UAS system, a well-established binary gene expression system in *Drosophila* [94]. Although *Drosophila* tauopathy models mostly do not show tau aggregation, Tau is found phosphorylated [14]. In addition, numerous tauopathy-related phenotypes can be observed in these flies, such as rough eye phenotypes (REP), neurodegeneration (ND) in the brain and eyes, learning and memory defects (LMD), reduced lifespan (RL), neuromuscular junction (NMJ), and locomotion defects. These phenotypes can be scored simply and quickly and have been successfully used in large-scale screens for searching modifiers of Tau pathology [92]. Thus, these fly models provide a versatile genetic tool to explore the vast diversity of tauopathies. The representative *Drosophila* tauopathy models and their phenotypes are listed and summarized in Table 1. (More information about *Drosophila* models can be found at <https://flybase.org> (accessed on 4 August 2021)).

**Table 1.** *Drosophila* tauopathy models. GMR-GAL4: eye-specific GAL4 driver; Elav-GAL4: pan-neural GAL4 driver; OK-GAL4: motor neuron-specific GAL4 driver; MB-GAL4: Mushroom Body-specific GAL4 driver; C161-GAL4: sensory neuron-specific GAL4 driver; D42-GAL4: motor neuron-specific GAL4 driver. hTauWT: human Tau wildtype; LMD: learning and memory defects; MT: microtubule; ND: neurodegeneration; NMJ: neuromuscular junction; pTL: pTau levels; REP: rough eye phenotype; RL: reduced lifespan.

Tau Isoform	Constructs (UAS)	GAL4 Driver	Phenotypes	References
2N4R	hTauWT	<i>GMR-GAL4, Ealv-GAL4</i>	REP, ND	[95]
	hTauP301L	<i>GMR-GAL4</i>	REP, ND	[96]
	hTauWT, hTauS2A hTauS11A	<i>GMR-GAL4</i>	REP, ND	[97]
	hTauWT:FLAG hTau <sup>STA</sup> :FLAG	<i>Elav-GAL4, OK107-GAL4</i>	ND, LMD	[98]
0N4R	hTauWT hTauV337M hTauR406W	<i>Elav-GAL4, OK6-GAL4</i>	RL, ND TL, MT	[89]
	hTauR406W/S2A hTauR406W/S202A	<i>GMR-GAL4</i>	REP, ND	[99]
	hTauT111A/T153A hTauT175A/T181A hTauT199A/T217A hTauS202A/S205A hTauT212A hTauS214A hTauT231A/S235A hTauAP5 hTauS422A hTauS396A/S404A	<i>GMR-GAL4</i>	REP, pTL	[100]
	hTauS262A	<i>GMR-GAL4</i>	REP, ND	[101]
	TauAP	<i>Elav-GAL4, OK6GAL4</i>	MT defects	[102]
	hTauE14	<i>GMR-GAL4</i>	REP, pTL, ND,	[103]
	hTauK44Q/R230Q hTau44–230	<i>GMR-GAL4</i>	REP, calpain activity	[104]
	hTau1–421	<i>Elav-GAL4</i>	RL, ND, pTL	[83]
	PH-Tau	<i>Elav-GAL4, MB-GAL4</i>	climbing, MB defects, LMD	[105]
	0N3R	hTauWT	<i>C161-GAL4</i>	sensory neurons defects
hTauWT		<i>D42-GAL4</i>	locomotion, axon, NMJ defects	[107]
hTauWT		<i>Elav-GAL4, D42-GAL4</i>	pTL, MT stability defects	[108]
<i>dTau</i>	tau <sup>EP3203</sup>		MT stability defects	[109]
	tau <sup>EP3597</sup>		MT stability defects	[109]

### 3.3. Representative Assays

#### 3.3.1. REP

REP is the most commonly used phenotype for screening of molecular players in *Drosophila* because it provides a visible phenotype that can be easily quantifiable [110], hence making *Drosophila* useful for enhancer or suppressor screens of Tau toxicity [96,110,111]. Expression of the Tau gene in the eyes using eye-specific GMR-GAL4 generates roughening of eyes with reduced eye size due to retinal degeneration as a readout for Tau toxicity [95,112]. *Drosophila* REP screening was applied to identify orthologs of candidate risk genes using data from a genome-wide association study-AD (GWAS-AD) data involved in Tau neurotoxicity. The screening identified *Amph*, *p130CAS*, *Eph*, *Fak*, and *Rab3-GEF* as modifier genes [111]. Apart from genetic screening analysis, REP was also useful in analyzing the extent of neurotoxicity of different phosphorylation forms of Tau protein [113] and assessing electrophysiological properties of Tau using electroretinogram recordings [114].

### 3.3.2. Neuronal Cell Death and Neurodegeneration

A shrunken brain, which is the consequence of cell loss in the brain, is the common feature of many neurodegenerative diseases, including tauopathy [115]. Therefore, neuronal cell death is examined regularly as one of the most representative phenotypes when a tauopathy animal model is generated. Tauopathy flies show increased vacuolar phenotype either in the brain (*Elav-GAL4*) or in the eye (*GMR-GAL4*) for neuronal degeneration due to neuronal cell loss. This phenotype can be visualized by immunohistochemical and histological methods using hematoxylin staining for vacuoles or TUNEL (Terminal deoxynucleotidyl transferase dUTP nick end labeling) assays for apoptotic cells in the tauopathy models [89,97,99,101,103].

### 3.3.3. Learning and Memory Assays

The *Drosophila* mushroom body (MB) is the functionally homologous brain structure to the hippocampus of mammals, which is the epicenter of regulating learning and memory [116–120]. Expression of human Tau using a pan-neuronal driver (*Elav-GAL4*) affects olfactory learning and memory functions in *Drosophila* [105]. Restricted Tau expression to MBs also results in defects in learning and memory that were determined by testing responses to attractive and repulsive odors in Tau-overexpressing flies [121]. Similarly, an aversive phototaxis suppression assay was used in *Drosophila* tauopathy models to measure learning and memory function [122].

### 3.3.4. Lifespan

The ultimate consequence of Tau toxicity is the reduction of lifespan in tauopathy flies, which can be analyzed by counting the number of surviving flies. Under normal conditions, wildtype flies live approximately 60 to 90 days, and neuronal expression of Tau isoforms and mutants reduce lifespan according to their toxicity [89,123]. Apart from the lifespan assay, pan-neuronal expression of Tau also leads to pupal lethality, which can be analyzed for Tau toxicity [102]. Overall, these phenotypes can be used to identify genetic modifiers of Tau toxicity.

### 3.3.5. NMJ and Locomotion

The larval NMJ is a widely analyzed structure used to understand the mechanisms of synapse formation, growth, and maintenance [124,125]. The most commonly used approach for NMJ analysis is to drive expression of the gene of interest (e.g., Tau) in larval motor neurons, using drivers such as *D42-GAL4* and *OK6-GAL4*, and then visualize its activity within readily accessible larval motor neuron axons and NMJ using assays for axonal transport and synaptic function, respectively [91]. Expression of 0N3R Tau in NMJ using *D42-GAL4* affects morphological and functional disruption of NMJ with reduction in size and numbers of boutons, as well as reduction in mitochondria at the synapse [126]. In addition, hyper-phosphorylated Tau strongly affected vesicle motion in axons and synaptic function [102]. Synaptic abnormalities led to defects in larval locomotion, and *Drosophila* AD larvae expressing A $\beta$ 42, or Tau exhibited reduction of NMJ bouton number and larval locomotion [92,127,128]. Hence, the locomotion behavior in conjunction with the NMJ phenotype is quite useful in addressing neuronal morphological defects followed by associated behavioral changes upon expression of diverse Tau species and manipulations of Tau modifiers.

### 3.3.6. Transposon Mobility

Transposable elements (TEs) are known as ‘jumping genes’ and constitutes approximately 45% of the human genome. Transposable elements are the mobile genetic sequences seen in all the eukaryotic genomes [129]. Somatic transposition of TEs, retrotransposons, which mobilize through an RNA intermediate—are observed in human brains [130–132], mouse [133], and fly models [134]. In addition, TEs have been also shown to carry transcriptional control elements that regulate the transcription of their own genes as well as



neighboring host genes, which was intensively reviewed in a recent review [135]. Recent studies of TEs in *Drosophila* have shown TE activation to be in association with Tau pathology in AD [136]. They also showed that Tau alters TE activity in the *Drosophila* brain expressing human wild-type or mutant Tau, suggesting that genomic instability in Tau-mediated AD mechanisms occurs due to TE activation. Similarly, transposable element dysregulation was identified as a key mediator of neuronal death in tauopathies, where heterochromatin decondensation and reduction of piwi and piwi-interacting RNAs (piRNAs) drive transposable element dysregulation in tauopathy [137].

### 3.4. Limitations

Despite many advantages of *Drosophila* as a tauopathy model, a few limitations need to be considered. First, compared to other vertebrate species, such as mice, the anatomy of the *Drosophila* brain is quite different from that of the human, in that brain connectivity is relatively simple and asymmetric [138,139]. Second, established behavioral assays are relatively simple and limited to directly addressing in-depth cognitive function [140]. Lastly, the lack of some critical organs/tissues homologous to those of vertebrates that may contribute to tauopathy, such as the adaptive immune system, closed blood circulatory system, and blood-brain barrier, might cause inconsistent and unpredictable results when applied to humans [141,142].

### 3.5. The Utility of the *Drosophila* Tauopathy Models and Their Translational Applications

A study from the *Drosophila* tauopathy model showed that the PAR-1 kinase can trigger tau toxicity by directly phosphorylating Tau at Ser262 and Ser356 [99]. This phosphorylation is an important step for the activity of downstream kinases, such as GSK-3 $\beta$ /sgg and Cdk5, to phosphorylate other sites in Tau and generate phosphoepitopes in diseased conditions [99]. Such phosphorylation of Tau protein may cause dysfunction of microtubule stabilization and neurodegeneration, demonstrating that phosphorylation of Tau can occur in a sequential manner dictated by previous phosphorylation events [97]. Pharmacological inhibition of GSK-3 $\beta$  by treating with SB415286 and lithium [143–145] promotes synapse formation and lifespan, respectively. Using Elav-GAL4/UAS-WT or hTau<sup>R406W</sup> *Drosophila* tauopathy models, nicotinamide mononucleotide (NAD) adenylyl transferase (NMNAT) were shown to be involved in a neuroprotective role of rescuing Tau<sup>R406W</sup> mutant phenotypes by clearing toxic phosphorylated Tau proteins and facilitating proper neuronal function [122]. Apart from GSK3 $\beta$  signaling regulated by Insulin signaling pathway, other pathways JAK/STAT signaling pathway [146], and Nuak1, an AMP-activated protein kinase (AMPK)-related kinase [147] were identified in causing hyperphosphorylation and Tau toxicity. In addition, genes involved in regulators of actin network, viz, cheerio (a fly ortholog of filamin), chd64 (a fly ortholog of transgelin-3), jaguar (a fly ortholog of myosinVI), paxillin, were identified as modifiers of the Tau<sup>V337M</sup> [148].

Ambegaokar and Jackson (2011) carried out one of the most exhaustive genetic screens using P-element insertion collections and identified a loss-of function collection consisting of 920 genomically mapped lethal P-elements [149]. In total, 1905 lines were screened and 37 modifiers of tau toxicity regulating autophagy, the cell cycle, and gene expression as well as phosphorylation were identified. Recent studies have also investigated the ability of small therapeutic compounds using a custom chemical library to improve tau-induced rough-eye phenotype in a *Drosophila melanogaster* model of frontotemporal dementia (FTD) and showed that Ro 31-8220, a potent inhibitor of PKC $\alpha$ , improved the rough-eye phenotype, reduced phosphorylated Tau species in vitro and in vivo, reversed Tau-induced memory impairment, and improved the fly motor functions [150].

As invaluable resources, the UAS-dsRNAi line libraries that cover more than 90% of the entire fly genome can be utilized for Tau regulator screening (Vienna *Drosophila* Research Centre, The Harvard *Drosophila* RNAi Resource Project, NIG-FLY Stock Centre and Bloomington Stock Centre), where various UAS-dsRNAi flies can be screened to identify the candidates involved in regulating Tau toxicity by crossing with UAS-Tau-

expressing transgenic flies. Tissue specific knock down of UAS-dsRNAi in flies expressing UAS-Tau will give a clear picture in mediating Tau pathogenesis and its interaction with Tau proteins. For example, RNAi functional screening in *Drosophila* models of human Tau-mediated neurodegeneration found that the downregulation of the *Drosophila* REEP1 homolog enhanced Tau toxicity with increased formation of Tau insoluble aggregates [151]. They further showed that the overexpression of either the *Drosophila* or the human REEP1 protein was able to revert these phenotypes and promote neuronal resistance to ER stress. Another genetic screening using GMR-GAL4/UAS-hTau<sup>V377M</sup> transgene have identified 16 enhancers and 8 suppressors of Tau toxicity which encode kinases and phosphatases as the major determinants of neurotoxicity in vivo [110]. In addition, a genetic screen for modifiers of 2N4R hTau toxicity has identified components of the ERK/MAPK and p38/MAPK pathways [149]. More specifically, a genetic modifier RNAi screening designed to validate AD susceptibility genes have identified *cindr*, *fit1/2*, and *aret*, the fly orthologs of the human CD2AP, FERMT2, and CELF1, respectively, as Tau modifiers implicated mainly in cell adhesion, together with identification of ITGAM and ITGA9, a fly homolog of the human integrin adhesion receptors [152]. This genome-wide genetic screening strategy can be modified by beginning the screening with a *Drosophila* genome-wide UAS-miRNA library followed by another RNAi screening for a selected set of identified miRNA-targets, yielding an E3/E4 ubiquitin ligase UBE4B as a novel tauopathy modifier to clear accumulated wild type Tau protein through autophagy [92].

#### 4. Zebrafish Tauopathy Model

##### 4.1. Advantages

The zebrafish is a small vertebrate animal model with high generation capacity [153]. Similar to other vertebrates, the anatomical structure of the zebrafish central nervous system is conserved, divided into the forebrain, midbrain, hindbrain, and the spinal cord, together with optical transparency at the larvae stage for superb observation capability [154,155]. Zebrafish and humans share approximately 70% similarity at the genome level, with 84% of counterpart genes related to human genetic diseases, including neurodegenerative diseases found in the zebrafish genome [156]. In addition, transgenic zebrafish can be efficiently generated with the Tol2 transposase system using specific tissue promoters by conventional expression [157] or conditionally using GAL4-UAS system [158] or Cre/loxP system [159]. Furthermore, targeted gene knockouts, such as Zinc Finger Nucleases (ZFNs), Transcription Activator-like Effector Nucleases (TALEN), and recently Clustered Regularly Interspaced Short Palindromic Repeats (CRISPR)-Cas9 [160], aided by a number of fluorescence-based transgenic lines, allow for the creation of disease models with high productivity [161].

Drug screening for neurodegenerative diseases including tauopathy requires a high-throughput in-vivo screening platform with large-scale screening capability because of the intricate etiologies of neurodegenerative diseases [162]. Zebrafish can provide a unique opportunity for the phenotype-based large-scale high-throughput screening in larval, as well as adult stages as a vertebrate animal model [163–165]. Indeed, through zebrafish chemical screening, several drugs have been discovered and translated into clinical trial [166]. For example, Lorcaserin, an FDA-approved serotonin agonist, was identified from a drug screening using *scn1* mutants to reduce the seizure severity and/or frequency in five Dravet syndrome patients [167].

##### 4.2. Current Zebrafish Tauopathy Models

In zebrafish, one *MAPT* in humans is duplicated as paralogous genes *mapta* and *maptb*: *mapta* can be spliced into isoforms with four and six tubulin-binding repeats (4R, 6R), while *maptb* is mostly spliced into 3R isoforms [168]. Both paralogous genes are predominantly expressed in the CNS, with *maptb* largely expressed in the trigeminal ganglion and dorsal sensory neurons during early embryogenesis [168].

Since 2002, several zebrafish genetic tauopathy models have been reported using different strategies (Table 2). Among them, the most acknowledged model is the one from Haass

group, in which the human Tau<sup>P301L</sup> mutant form was overexpressed under pan-neuron-specific *HuC* promoter by utilizing a Gal4/UAS-based bidirectional expression system [169]. This transgenic zebrafish model exhibited pathological tauopathy characteristics like multiple pathological Tau-specific phosphorylation, defective motor axons/synapses, neuronal cell death in the spinal cord, the escape response defect at larval stages, and NFT formation at young adult stages [169]. Another zebrafish tauopathy model from the Rubinsztein group successfully confirmed the pathogenicity of Tau A152T variant (Tau<sup>A152T</sup>) as a risk factor for FTD and AD by generating a novel transgenic line overexpressing this human Tau variant using the Gal4/UAS system [170]. This Tau<sup>A152T</sup> transgenic model also exhibits tauopathy phenotypes, including pathological Tau phosphorylation of AT270, PHF, and AT8, the presence of NFT, increased neuronal cell death, abnormal axonal pathfinding and branching, and the motility defect against touch response. In particular, the proteasomal activity was shown to be compromised in this model delaying Tau clearance, and induction of autophagy activity was suggested as a potential therapy [170]. Other zebrafish tauopathy models in which human Tau was directly expressed under a pan-neuronal promoter also showed frank phosphorylation of Tau, but other classical tauopathy phenotypes were either vague or undetectable in these models [171–175]. The reason for this inconsistency is not clear, but the expression level of Tau protein may be a key difference. Nonetheless, due to encouraging results of zebrafish as a tauopathy model, more transgenic lines are expected to follow, especially to take full advantage of zebrafish as a genetic tauopathy model. The current zebrafish tauopathy models and their phenotypes are listed and summarized in Table 2 (More information about zebrafish can be found at <https://zfin.org> (accessed on 4 August 2021)).

**Table 2.** Zebrafish tauopathy models. hTau: human Tau; N/A: not applicable; TBI: traumatic brain injury; WT: wildtype; +: positive.

Tau Isoform (Mutation)	Promoter	Biochemical Phenotype	Biological and/or Behavioral Phenotype	Rescue	References
hTau 2N4R WT	<i>GATA-2</i>	- pS396/S404 (PHF)+ - NFTs	disrupted cytoskeletal filaments	N/A	[171]
hTau 0N4R WT	<i>eno2</i>	Tau accumulation	N/A	N/A	[172]
hTau 2N4R (P301L)	(UAS/GAL4) <i>HuC</i>	- pT231/S235, pT181, pS262/S356, pS396/S404, pS422, and pS202/T205+ - NFT formed	- neuronal cell death - shortened motor axons - defective locomotion	GSK3β inhibitor reduced Tau hyperphosphorylation	[169]
truncated hTau	<i>HuC</i>	AT8+	neuronal cell death	overexpression of Bcl2-L1, Nrf2, and GDNF rescued neuronal cell death	[173]
hTau 2N4R (P301L)	<i>HuC</i>	AT8+	N/A	N/A	[174]
hTau 2N4R (A152T)	(UAS/GAL4) <i>HuC</i>	- AT270-, PHF-, AT8+ - NFT formed	- defective motor axons (truncated, abnormal pathfinding branching) - neuronal cell death - delayed Tau clearance due to proteasome defect - defective escape response	activated autophagy rescued all phenotypes	[170]
hTau 2N4R WT	<i>eno2</i>	N/A	TBI induces - neuronal cell death - post-traumatic seizures - Tau inclusions	dynamamin inhibitors/anti-convulsant drugs rescued TBI-induced Tau inclusions/cell death	[175]

### 4.3. Representative Assays

#### 4.3.1. Neuronal Cell Death

In the zebrafish, assays for apoptosis detection were well developed and described either in whole-mount or in section by TUNEL staining or by acridine orange staining that detects dead cells in live zebrafish embryos without fixation [174,176,177]. Several antibodies for detecting apoptotic pathways can also be applied to zebrafish tauopathy models, such as anti-cleaved caspase-3 antibody [176].

#### 4.3.2. Axonopathies

Axonopathies, such as dystrophic axons, axonal swelling, and demyelination, are some of the distinctive neuropathological clinical features of tauopathy [178,179]. In developing zebrafish, primary motor axons with a large diameter appear at ~11 h postfertilization from the spinal segments and protrudes ventrally [180]. During developmental stages, these axons can be visualized live with high resolution using motor neuron-specific transgenic lines such as *Tg(mnx1:GFP)<sup>ml2</sup>* and *Tg(insm1a: EGFP)<sup>ntu804</sup>* [181] or using motor axon-specific antibody, Znp1 [182]. The continuous development of motor neurons has been examined without missing crucial events in live embryo with time lapse imaging [183] and can be applied to examine Tau- or Tau modifier-induced axonal defects with great detail in a zebrafish tauopathy model.

#### 4.3.3. Locomotion

Neuron-specific expression of Tau in tauopathy models affects the nervous system, resulting in morphological and functional defects at multiple levels, and the locomotion phenotype is an essential assay that allows evaluation of those defects collectively. Zebrafish locomotion has been intensively utilized due to its small size and high-throughput capacity at both larvae and adult stages [184,185]. For convenience of researchers, various kinds of the commercially available apparatus and software, plus detailed protocols have been well developed specifically for analyzing the locomotion in zebrafish, making such an assay feasible in zebrafish laboratories on a regular basis.

#### 4.3.4. Ubiquitin-Proteasome System (UPS) and Autophagy-Lysosomal Pathway (ALP)

In general, monomeric Tau protein is degraded by both 20S and 26S UPS [186–189], but such UPS is likely unable to clear aggregated Tau but is instead impaired by Tau toxicity [78,190]. In the zebrafish tauopathy model, apart from conventional methods such as western blotting for UPS markers, the UPS activity can be easily monitored in vivo by injecting Ub-R-YFP (substrate tagged with YFP, known to be degraded by the UPS) construct into embryos [191]. Thus, the examination of UPS malfunction is worth considering when characterizing zebrafish tauopathy phenotypes. Similarly, the ALP, another degradative pathway for Tau protein, can be visualized in vivo by expressing GFP-Lc3-RFP-Lc3ΔG construct, as well as western blots of autophagy markers and specific inhibitor treatment in zebrafish models [192].

### 4.4. Limitations

Despite several advantages, the number of zebrafish tauopathy models is still limited compared to those of rodents, *Drosophila*, or *C. elegans* tauopathy models. More zebrafish tauopathy models can be developed and further characterized with a battery of tauopathy phenotypes in great detail in vivo. In particular, a few neurobehavioral assays in zebrafish during both larva and adult stages that may be directly relevant to tauopathy have yet to be applied to current and future zebrafish tauopathy models. For example, the anxiety level and a memory-based adaptive behavior, possibly disrupted in tauopathy, can be represented by simple neurobehavioral tests such as thigmotaxis/open field test and habituation of both larva and adult zebrafish, which can be devised for high-throughput screening.

#### 4.5. The Utility of the Zebrafish Tauopathy Models and Their Translational Applications

Although zebrafish tauopathy models are limited, several new findings on pathological features and signaling factors for tauopathy have been discovered, and novel GSK3 $\beta$  inhibitors and Tau assembly modulators were validated as potential therapeutic targets for tauopathy using these zebrafish Tau models.

By combining human *Tau*<sup>P301L</sup>-overexpressing zebrafish model with the “mitofish”, a transgenic zebrafish that was developed to study the dynamic and life cycle of mitochondria in real time in vivo, a profound mitochondrial transport deficit was visualized under a tauopathy condition [193]. This phenotype was rescued by overexpressing MARK2, the kinase that regulates the binding affinity of Tau to microtubules [194], thus directly demonstrating the impact of MARK2 on axonal transport in a Tau-dependent manner in vivo [193]. Similarly, the behavior of microglia in a tauopathy disease context in vivo was investigated by combining human *Tau*<sup>P301L</sup>-overexpressing zebrafish model with the *Tg(apoe:EGFP)* that marks the microglia [195]. Compared to the non-disease condition, the microglia in the zebrafish tauopathy model became highly mobile and dynamically changed their morphology with a fewer and shorter branching: more interestingly, the phagocytosis process by the microglia engulfing apoptotic neurons was also observed in real time, and furthermore, the genetic ablation of microglia increased the Tau hyperphosphorylation level, suggesting that microglia possesses a neuroprotective role in the tauopathy condition [195]. Also, as traumatic brain injury (TBI) is a conspicuous risk factor for dementias including Tauopathies, subjecting a novel TBI paradigm to the human *Tau*<sup>WT</sup> zebrafish larval model increased neuronal death and Tau inclusion of which phenotypes were rescued by dynamin inhibitors or anticonvulsant drugs [175], suggesting that the seizure activity has the strong impact on prion-like seeding and spreading of Tau following TBI.

Potential candidate factors that may modulate tauopathy were functionally validated using zebrafish tauopathy models. For example, dysregulated signaling of brain-derived neurotrophic factor (BDNF) is strongly associated with neurodegenerative diseases [196], but how BDNF signaling affects tauopathy or vice versa remains unclear. By exploiting the human *Tau*<sup>P301L</sup> zebrafish model, it was shown that the BDNF level was reduced and associated with axonal developmental defects, but not neuronal death, in the tauopathy condition, since exogenous BDNF supplementation was able to rescue the primary axonal growth but had no effect on Tau-induced apoptotic cells [197]. In addition, HS3ST2 (heparan sulphate glucosamine 3-O-sulphotransferase 2), also known as 3OST2, and REG-1 $\alpha$  (regenerating islet-derived 1 $\alpha$ ) are two new factors that were shown to be critical for the abnormal phosphorylation of Tau in the *hTau*<sup>P301L</sup> zebrafish model [198]. A loss of function of *HS3ST2* result in an apparent inhibition of abnormal Tau phosphorylation in the brain and the spinal cord, leading to a complete rescue of axonal length and touch response phenotypes [198]. Reversely, overexpression of REG-1 $\alpha$  increased tau hyperphosphorylation through the AKT/GSK3 $\beta$  pathway in the same zebrafish tauopathy model [199]. In terms of testing a Tau aggregation modulator, FKBP52 (FK506-binding protein with a molecular mass of ~52 kDa) was validated as a new player that is potentially applicable for therapeutics [49]. This immunophilin protein directly interacted with Tau protein and induced the formation of Tau oligomers in vitro, with EM analysis showing that FKBP52-induced oligomers assembled into filaments. In the human *Tau*<sup>P301L</sup> zebrafish model, knockdown of *FKBP52* debilitated the pathological Tau activity and recovered axonal outgrowth and branching in defective motoneurons, confirming the functional implication of FKBP52 in modulating Tau conformational change and assembly in vivo [49].

To take advantage of zebrafish as an in vivo animal model for chemical genetics, zebrafish tauopathy models were also utilized for candidate small molecule validation. GSK3 $\beta$ , one of the main kinases that phosphorylates Tau, is therefore considered as a key therapeutic target for tauopathy. The human *Tau*<sup>P301L</sup> transgenic zebrafish was adopted to validate the efficacy of a newly developed GSK3 $\beta$  inhibitor, AR-534, confirming its stronger effect on diminishing pathologic Tau phosphorylation with a high selectivity and

good bioavailability in vivo than SB-216763 and SB415286, two well-known GSK3 $\beta$  inhibitors [169,200]. In addition, a few FDA-approved clinical drugs were tested in the human *Tau*<sup>P301L</sup> zebrafish model. Given that HS3ST2 induced abnormal Tau phosphorylation as aforementioned, surfen and oxalyl surfen are small molecules harboring heparan sulfate antagonist properties and well tolerated in clinical setting in cancer treatment [201,202]. These two small molecules were capable of mitigating Tau hyperphosphorylation and rescuing spinal motoneuron defects, leading to recover the touch escape response in the zebrafish *Tau*<sup>P301L</sup> tauopathy model [203]. Sildenafil or tadalafil, an inhibitor of phosphodiesterase 5, widely used for erectile dysfunction and pulmonary hypertension treatment [130], was also shown to be a promising strategy to prevent Tau toxicity: by activating cGMP (cyclic guanosine monophosphate)-dependent protein kinase, the stimulated proteasome activity reduced the level of Tau protein and decreased the associated morphological abnormalities in the zebrafish human *Tau*<sup>A152T</sup> model [204].

Finally, zebrafish tauopathy models can be also applied for mid- to high-throughput in vivo chemical library screening. An embryonic zebrafish tauopathy model that transiently overexpresses Tau-GFP fusion was used to screen 400 herbal extracts using neuronal death as an in vivo readout [205]. 45 out of 400 extracts were confirmed to be effective in reducing Tau-induced neuronal death, and among them, the extract from *Tripterygium wilfordii* stem showed the highest effect. HPLC analysis showed that its major compound was epicatechin that activated Nrf2-dependent antioxidant responses and thus abated Tau-induced neuronal death [205]. Of note, overexpression of multiple signaling factors such as Bcl2-L1 or GDNF was also capable of effectively protecting neurons from Tau-induced apoptosis in the same zebrafish tauopathy model [173,205].

## 5. C. elegans Tauopathy Models

### 5.1. Advantages

*Caenorhabditis elegans* (*C. elegans*) is a small invertebrate genetic animal model that possesses a high reproduction ability (once every 3–4 days) and a short lifespan (approximately 2–3 weeks) [206,207]. A major advantage of *C. elegans* is that desired phenotypes can be assessed faster than any other model organisms [208,209]. Regardless of its simplicity, *C. elegans* is a multicellular organism composed of the brain, pharynx, intestine, gonads, muscle, and rectum. Furthermore, the transparency of its body during its lifetime facilitates live imaging with the aid of fluorescent protein reporters under tissue-specific promoters, including neuronal promoters. *C. elegans* has 302 lineage-identifiable neurons, thus increasing the accuracy of neuronal analyses while reducing the complexity [210]. In the context of neurodegenerative disorders research, neuronal cell death or protein aggregation can be easily observed and quantified, allowing single cell-lineage analysis for a phenotype at an organism level [211]. Practically, the maintenance of *C. elegans* is very convenient due to its small size even in the adult stage (~1 mm) and the ability to be stored in liquid nitrogen and recovered years later [212].

*C. elegans* have 60–80% orthologous genes with humans, with more than half of them associated with human diseases [213]. Along with the completed sequenced genome [214], the compendium of neuronal connectomes and the whole neuronal expression map by the CeNGEN project of *C. elegans* using state-of-the-art technologies are available. These tools help to understand neuronal function with single cell resolution at the organism level [210,215]. Transgenic *C. elegans* models for neurodegenerative diseases can be generated easily by traditional microinjecting transgene DNA [216] or biolistic bombardment using DNA-coated gold particles to integrate exogenous DNA with high efficiency [217]. Altogether, *C. elegans* is a still convenient and promising in vivo system for modeling human mutation-associated diseases while maintaining favorable features of in vitro systems.

### 5.2. Current C. elegans Tauopathy Models

*C. elegans* has two PTL-1 isoforms, PTL1a and PTL1b, homologous to human Tau. The two isoforms are differentiated by the number of tandem repeats (5 repeats in PTL-1a and

4 repeats in PTL-1b) and share a homologous microtubule-binding region with mammalian Tau [218]. To date, nearly 20 lines of *C. elegans* tauopathy models from seven groups have been established by taking advantage of the convenient genetic manipulation. Various isoforms (0N4R, 1N4R, 2N4R), as well as wild type (WT) and mutation forms (P301L, V337M, R406W, A152T, V363I, V363A, T231E, K274/281Q,  $\Delta$ K280, pseudo-hyperphosphorylation form) of human Tau were expressed under pan-neuronal or touch-neuronal promoters in the transgenic worms (Table 3). In these tauopathy models, most of the pathological features of human tauopathy, such as Tau phosphorylation, axonal degeneration, neuronal loss, synapse dysfunction, and mitochondria defect, were in an age-dependent manner. Typical *C. elegans* behavioral phenotypes, including uncoordinated moving, touch response, or thrash rates, were affected to different degrees of severity depending on the expressed forms of human Tau species [59,219–224]. The representative *C. elegans* tauopathy models and their phenotypes are listed and summarized in Table 3 (More information about *C. elegans* can be found at <https://wormbase.org> (accessed on 4 August 2021)).

### 5.3. Representative Assays

#### 5.3.1. Lifespan

Due to the short life cycle of *C. elegans* (reproduction, every 3–4 days; lifespan, 2–3 weeks), different stimuli that influence survival are widely used [225]. For example, genetic manipulations or temperature effects on the lifespan of *C. elegans* can be tested on the solid bacteria agar plate, whereas the treatment of diet compounds or chemicals can be more feasible in liquid media [226,227].

#### 5.3.2. Neuronal Death

Similar to *Drosophila* or zebrafish tauopathy models, neuronal cell death is one of the indispensable pathological phenotypes in *C. elegans* tauopathy models. Various staining techniques, such as TUNEL, acridine orange, or immunostaining, can be used to visualize this phenotype in worm models [228].

#### 5.3.3. Axonal Defects

In *C. elegans* tauopathy models, the simple morphology of cells and tissues labeled with fluorescence markers have made it possible to use live imaging to examine pathophenotypes of motor and mechanosensory axons in great detail and to assess axonal discontinuities, morphological abnormality, synapse defects, and faulty commissure [229–232].

#### 5.3.4. Behavior Phenotypes

Generally, behavioral phenotype assays to test Tau toxicity in *C. elegans* are mobility-based [233]. In the thrashing assay, a well-established motility-based assay, the frequency and lateral swimming movements of worms placed in liquid media are measured [234]. Other mobility-dependent indexes, such as uncoordinated movement, distorted wave motion, or locomotion speed, are also commonly used as behavioral assays in *C. elegans* models to test effects of drugs, chemicals, or genetic mutations [235,236].

**Table 3.** hTau: human Tau; N/A: not applicable; PHP: pseudohyperphosphorylated; Unc: uncoordinated; TAI: Tau aggregation inhibitors; ThS: thioflavin S; WT: wildtype; +: positive.

Tau Isoform (Mutation)	Promoter	Biochemical Phenotypes	Biological Phenotypes	Behavioral Phenotypes	Rescue	References
hTau 1N4R (WT, P301L, V337M)	<i>aex-3</i> (pan neuronal)	12E8, AT8, pT205, AT270, pT181, CP13, PHF-1, pS422+	- defective presynapse of cholinergic neurons - progressive axonal degeneration - neuronal cell death	- age-dependent Unc - reduced thrash rate	N/A	[219]
hTau 0N3R(WT), 0N4R(WT, P301L, R406W)	<i>mec-7</i> (touch neuron)	PHF-1, AT8+	- morphologic abnormalities in touch neurons - microtubule loss - non-apoptotic neuronal death	age-dependent touch response defect	HSP70 expression improved touch response	[220]
hTau 0N3R(WT, PHP)	F25B3.3 (pan-neuronal)	Tau5, AT180, PHF-1, AT8, TG3+	defective motor axons by PHP-Tau	progressive age-dependent Unc	N/A	[221]
- hTau 1N4R(V337M) + ΔK280 - hTau 1N4R(V337M) + ΔK280(I227P;I308P)	<i>aex-3</i> for 1N4R (V337M); <i>Rab-3</i> for ΔK280 (pan-neuronal)	- K9JA, 12E8, PHF1+, - ThS+	- axonal degeneration of GABAergic and cholinergic motor neurons - pharyngeal presynapse - synapse loss - defective mitochondrial transport	early-onset paralysis (1N4R(V337M) + ΔK280)	TAI reduced Tau expression/rescued the locomotion	[59]
hTau 2N4R (WT, A152T)	<i>Snb-1</i> (pan-neuronal)	- K9JA+ - MC1+	A152T showed: - acute neuronal dysfunction - shorter lifespan - mislocalization of pre-synaptic proteins - distorted mitochondrial distribution and trafficking	early-onset paralysis (A152T)	TAI did not rescue paralysis	[222]
hTau 2N4R (V363I, V363A)	<i>aex-3</i> (pan-neuronal)	- SP70, AT180, AT8+	- defective neuromusculature - defective pharynx	- increased body bending - reduced lifespan	N/A	[223]
hTau 0N4R (T231E, K274/281Q)	<i>mec-7</i> (touch neuron)	N/A	- neuronal morphological abnormalities - suppressed paraquat-induced mitophagy	reduced touch sensation	N/A	[224]



#### 5.4. Limitations

Ironically, the aforementioned advantages of *C. elegans* can be potentially disadvantageous in tauopathy research under certain conditions. For instance, the small size and limited number of neurons of *C. elegans* can be a drawback in biochemical approaches because the small number of touch neurons overexpressing human Tau (a total of only six neurons) causes difficulty in detecting Tau protein abnormalities such as thioflavin staining [224]. In addition, although *C. elegans* carries 60–80% orthologous genes with human and mutant line generation in *C. elegans* is straightforward, only 30% of genes of *C. elegans* can be mutated because of high lethality [237]. Although gene-silencing techniques such as RNAi can be complemented to knock down the gene of interest, such knockdowns in the *C. elegans* nervous system are often refractory [238–240], thereby hampering the tauopathy modifier studies. Furthermore, lack of features of vertebrate neurons, such as DNA methylation or myelination of axons, in addition to absence of several defined vertebrate organs, such as brain and circulatory system, may lead to an inconsistency in both physiological and pathological outcomes of tauopathy models of *C. elegans* and human cases and in screening results for tauopathy drugs or compounds [241]. Finally, despite recent studies showing the ability of this model to learn and remember experiences [242,243], it may be too simple to deduce the cognitive behavioral phenotypes observed in mammalian neurodegenerative disease.

#### 5.5. The Utility of the *C. elegans* Tauopathy Models and Their Translational Applications

Even though *C. elegans* is a very simple model and appears to be far from being an alternative for vertebrate models as a clinical testing system for neurodegenerative diseases, the *C. elegans* model research for tauopathy, covering the discovery of its characteristics and the identification of the drugs or therapeutic targets, has been quite informative and worth being validated in higher model systems before transferring to clinical trials.

For instance, to assess the significance of the Tau aggregation process in tauopathy, a pro-aggregation *C. elegans* model overexpressing human  $Tau^{\Delta K280}$  was examined in parallel with another transgenic line co-expressing anti-aggregation substitutions I277P and I308P of Tau that prevent  $\beta$ -sheet formation and subsequent aggregation (human  $Tau^{\Delta K280}$ , plus I277P and I308P) [59]. As a result, the pro-aggregation strain showed severe motility impairment, neuronal dysfunction as well as disturbed axonal transport of mitochondria which was not observed in the strain that co-expresses the anti-aggregation substitutions. Furthermore, several Tau aggregation inhibitors showed the ability to prevent Tau toxicity in the pro-aggregation strain, highlighting that inhibiting the Tau aggregate formation may be a potential target and Tau aggregation inhibitors could be encouraged to test in clinical trials [59]. Another example is the function validation of dihydrolipoamide dehydrogenase, one of the major metabolic enzymes of mitochondria [244]. In the human  $Tau^{WT}$  *C. elegans* model, suppression of this gene either by RNAi or inhibitor resulted in increased whole-body glucose levels and Tau phosphorylation, consistent with the observation in AD patients [245], suggesting that the disturbance in energy metabolism can significantly induce the neurotoxicity of pathological Tau [246]. Also, co-expression of wild type LRRK2, known as a genetic cause of Parkinson's disease and some cases of Tauopathy [247], led to increased expression of several 60S ribosomal, mitochondrial, and V-type proton ATPase proteins without altering the redox status in the human  $Tau^{V337M}$  *C. elegans* model. Moreover, co-expression with mutant LRRK2 (G2019S or R1441C) showed similar effects additionally with increased protein oxidation and lipid peroxidation, revealing roles of the LRRK2 activity in a Tau-dependent context [248]. In addition, a selective loss of glutamatergic neurons was observed in a human  $Tau^{A152T}$  overexpressing transgenic *C. elegans* [249]. In this strain, the glutamatergic nervous system was shown to be particularly vulnerable, largely due to necrotic cell death pathway. Genetic analysis also revealed this phenomenon occurred through several mechanisms, including type 9 adenylyl cyclase signaling, signaling through glutamate receptor complexes, aging-related signaling, and  $Ca^{2+}$  dyshomeostasis with increased  $Ca^{2+}$  released from the ER [249].

In a recent study, a “PTM-mimetics” *C. elegans* strain was generated to clarify the precise impact of PTMs on neural toxicity of Tau. This strain contained mutations of T231E that mimics phosphorylation of pathological epitope or K274Q and K281Q that mimic disease-associated lysine acetylation as a single-copy gene insertion by CRISPR-Cas9 genome editing [224]. This “PTM-mimetics” strain showed reduced touch response and exhibited neuronal morphological abnormalities in an age-dependent manner, as well as mitophagy defect in response to mitochondrial stress. By limiting Tau expression as a single-copy, not as overexpression, the decisive role of PTMs in the pathogenesis of tauopathy has been emphasized, thus providing a new perspective for the therapeutic approach [224].

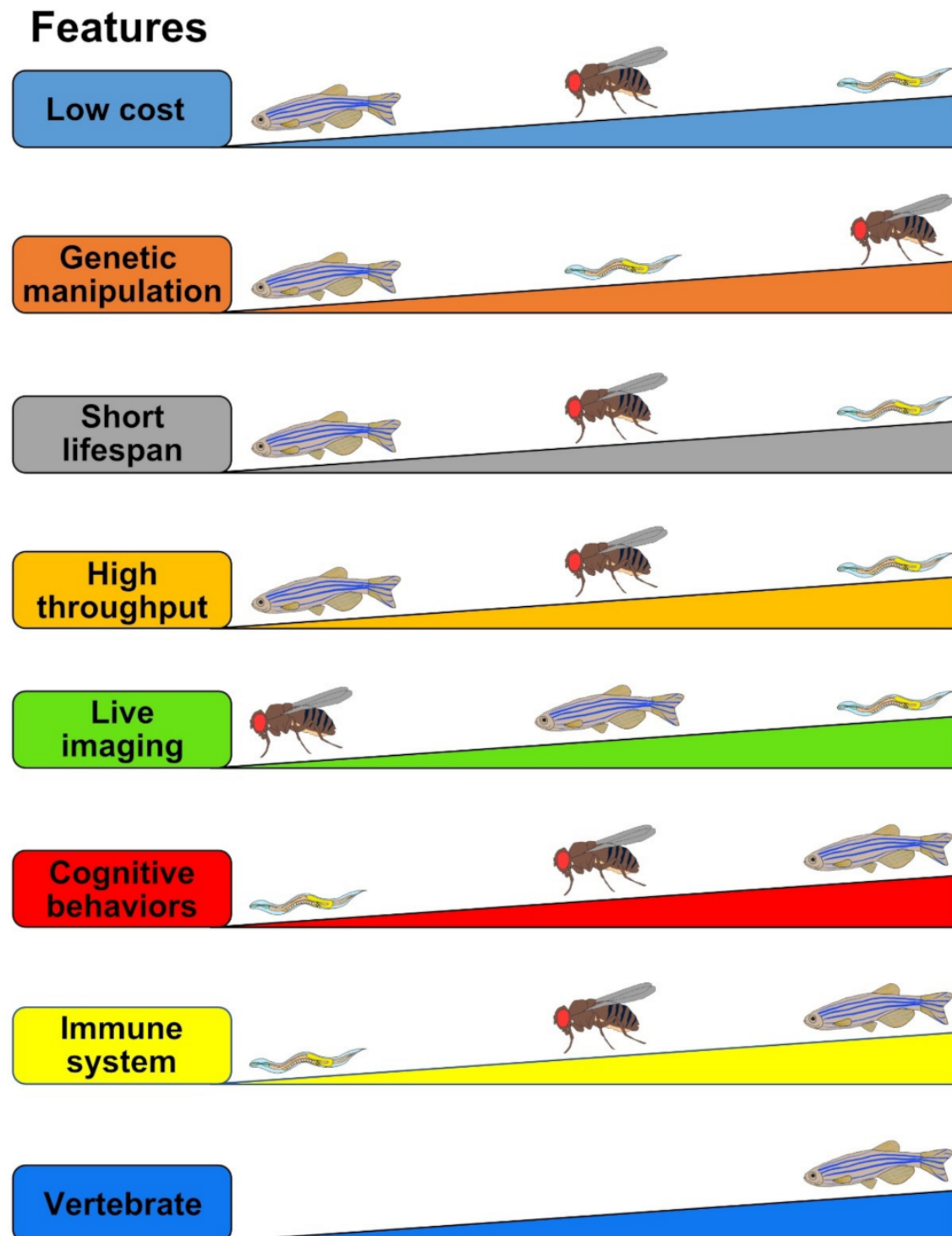
Curcumin, one of the common used spices and ancient medicines, has been validated epidemiologically and currently tested for clinical trials of various diseases [250]. Interestingly, epidemiological studies showed that the prevalence of AD in India is less than in US, which may be explained by the curcumin-rich diet [251]. Based on this observation, Yasuo Ihara group have tested the effects of curcumin on *C. elegans* human *Tau*<sup>WT</sup> and *Tau*<sup>R406W</sup> models [252]. As a result, curcumin rescued not only the uncoordinated (Unc) phenotype but also the neuritic abnormalities of both human *Tau*<sup>WT</sup> and *Tau*<sup>R406W</sup> expressing worms. However, curcumin did not prevent Tau hyperphosphorylation nor the aggregation, but instead increased the level of acetylated  $\alpha$ -tubulin, suggesting tubulin may play a critical role in controlling Tau toxicity [252]. The following study has disclosed the important of balanced expression of Tau and tubulin in tauopathy by examining several different strains of *C. elegans* expressing various levels of WT Tau and assessing the effect of the tubulin [253]. The knockdown of *tbce-1*, a human tubulin-folding cofactor E homologue, or  $\alpha$ -tubulin led to enhanced tau toxicity in a Tau level-dependent manner. Thus, the neurotoxicity of Tau can be triggered by reducing tubulin levels, even in a very low Tau-expressing worm that showed no abnormal behaviors per se. More strikingly, co-incubation of purified tubulin was able to inhibit Tau aggregation in vitro. Therefore, the ratio of expression between Tau and tubulin may be a determinative character of the tauopathy cascade [253].

One of the obvious advantages of *C. elegans* tauopathy model is a large-scale genetic screening capability. Indeed, a RNAi library screening was conducted using human *Tau*<sup>V337M</sup> *C. elegans* model: out of 16757 genes screened, 60 genes showed increased Unc phenotype in the Tau transgenic worm. Confirmed by loss-of-function studies, *aex-1*, *acr-14*, *lin-44*, *sir-2.3*, *pxn-1*, and *vap-1* were finally identified as enhancer factors of Tau toxicity, being novel candidate genes associated with tauopathy since human homologs were found [254]. Similarly, from a forward genetic screening using human *Tau*<sup>V337M</sup> *C. elegans* model, recessive mutations of *sut-1* and *sut-2* partially suppressed the Unc phenotype, Tau aggregation and pathological features of tauopathy. SUT-1 protein was shown to interact with UNC-34 protein, while SUT-2 physically bound to ZYG-12, required for tau neurotoxicity. Moreover, mammalian SUT-2, which is MSUT2, was found markedly decreased in the post-mortem temporal lobe brain region of AD patients. In line with this, in vitro data also showed that high levels Tau led to increased expression of MSUT2 protein [255–257]. Taken together, screening of tauopathy *C. elegans* models allowed the identification of several conserved molecular pathways participating in Tau neurotoxicity, which are potentially utilized to be novel strategies for treating tauopathy.

## 6. Conclusions

The etiology of tauopathy is very complex and multi-faceted, and finding an efficient cure is imperative. Appropriate utilization of animal models that mimic essential pathophenotypes of tauopathy will reveal underlying mechanisms and identify key modifiers for disease prevention or novel drug target discovery. Despite their imperfections, the small genetic animal models discussed in this review (*Drosophila*, zebrafish, and *C. elegans*) have greatly helped scientists to appreciate diverse aspects of Tau biology as well as to understand detailed molecular pathways of Tauopathy (Figure 3, Table 4). Through their major advantages, including (1) low cost in infrastructure and maintenance, (2) short

lifespan, (3) strong flexibilities of genetic manipulation, and (4) real-time, live imaging, and/or (5) high-throughput screen capability, tauopathy models of *Drosophila*, zebrafish, and *C. elegans* will continue to contribute to the discovery of a novel therapy for Tauopathy.



**Figure 3.** Comparisons of the strength and limitations of *Drosophila*, zebrafish, and *C. elegans* as tauopathy models. The evaluated criteria (“Features”) are represented as the thicker means the better. For example, in the Low cost feature, *C. elegans* stands in the first place which is the cheapest, followed by *Drosophila* in the second and zebrafish in the last.

**Table 4.** Summary of tauopathy models of *Drosophila*, zebrafish, and *C. elegans*.

	Strength	Limitation
<b>Mouse</b> (not covered in this review)	<ul style="list-style-type: none"> <li>- mammalian model</li> <li>- phylogenetically close to human</li> <li>- almost 100% human homolog genes found</li> </ul>	<ul style="list-style-type: none"> <li>- costly in infrastructure and maintenance</li> <li>- time-consuming</li> <li>- large-scale studies are limited</li> </ul>
<b><i>Drosophila</i></b>	<ul style="list-style-type: none"> <li>- low-cost in infrastructure and maintenance</li> <li>- highly amenable to genetic manipulations</li> <li>- short lifespan</li> <li>- high-throughput screening feasible</li> </ul>	<ul style="list-style-type: none"> <li>- simple brain structure</li> <li>- relatively simple cognitive behaviors</li> <li>- lack of the adaptive immune system</li> </ul>
<b>Zebrafish</b>	<ul style="list-style-type: none"> <li>- a vertebrate animal model</li> <li>- highly homologous genes to human</li> <li>- live imaging</li> <li>- complete immune system</li> <li>- rapid development</li> <li>- high-throughput screening available</li> </ul>	<ul style="list-style-type: none"> <li>- limited cognitive behavioral assays</li> <li>- relatively expensive in infrastructure and maintenance (compared to <i>Drosophila</i> and <i>C. elegans</i>)</li> <li>- genetic tools yet to be comprehensive (compared to <i>Drosophila</i> and <i>C. elegans</i>)</li> </ul>
<b><i>C. elegans</i></b>	<ul style="list-style-type: none"> <li>- easy and low-cost in infrastructure and maintenance</li> <li>- highly amenable to genetic manipulations</li> <li>- live imaging</li> <li>- very short lifespan</li> <li>- high-throughput screening feasible</li> </ul>	<ul style="list-style-type: none"> <li>- less homologous genes to human</li> <li>- extremely simple cognitive behaviors</li> <li>- different anatomical systems (no brain structure and immune system, etc.)</li> </ul>

**Author Contributions:** H.-K.G., K.Y. and J.-S.L. designed the format of the manuscript, and all authors contributed to writing of the manuscript. All authors have read and agreed to the published version of the manuscript.

**Funding:** This work was supported by National Research Foundation (NRF) and National Research Council of Science & Technology (NST) of Ministry of Science and ICT of Korea (NRF-2019R1A2C1010661, 2019R1A2C2004149, CRC-15-04-KIST), and KRIBB Research Initiative Program (KGM5352113, KGM2112133).

**Acknowledgments:** Authors thank all lab members for thoughtful comments and discussion on the manuscript.

**Conflicts of Interest:** The authors declare no conflict of interest.

## References

- Chi, H.; Sang, T.-K.; Chang, H.-Y. Tauopathy. In *Cognitive Disorders*; IntechOpen: London, UK, 2018.
- Spillantini, M.G.; Goedert, M.; Crowther, R.A.; Murrell, J.R.; Farlow, M.R.; Ghetti, B. Familial multiple system tauopathy with presenile dementia: A disease with abundant neuronal and glial tau filaments. *Proc. Natl. Acad. Sci. USA* **1997**, *94*, 4113–4118. [[CrossRef](#)]
- Gotz, J.; Halliday, G.; Nisbet, R.M. Molecular Pathogenesis of the Tauopathies. *Annu Rev. Pathol* **2019**, *14*, 239–261. [[CrossRef](#)]
- Weingarten, M.D.; Lockwood, A.H.; Hwo, S.-Y.; Kirschner, M.W. A protein factor essential for microtubule assembly. *Proc. Natl. Acad. Sci. USA* **1975**, *72*, 1858–1862. [[CrossRef](#)]
- Brion, J.P.; Couck, A.; Passareiro, E.; Flament-Durand, J. Neurofibrillary tangles of Alzheimer's disease: AN immunohistochemical study. *J. Submicrosc. Cytol.* **1985**, *17*, 89–96.
- Grundke-Iqbal, I.; Iqbal, K.; Tung, Y.-C.; Quinlan, M.; Wisniewski, H.M.; Binder, L.I. Abnormal phosphorylation of the microtubule-associated protein tau (tau) in Alzheimer cytoskeletal pathology. *Proc. Natl. Acad. Sci. USA* **1986**, *83*, 4913–4917. [[CrossRef](#)] [[PubMed](#)]
- Goedert, M.; Wischik, C.; Crowther, R.; Walker, J.; Klug, A. Cloning and sequencing of the cDNA encoding a core protein of the paired helical filament of Alzheimer disease: Identification as the microtubule-associated protein tau. *Proc. Natl. Acad. Sci. USA* **1988**, *85*, 4051–4055. [[CrossRef](#)] [[PubMed](#)]
- Wischik, C.; Novak, M.; Edwards, P.; Klug, A.; Tichelaar, W.; Crowther, R. Structural characterization of the core of the paired helical filament of Alzheimer disease. *Proc. Natl. Acad. Sci. USA* **1988**, *85*, 4884–4888. [[CrossRef](#)] [[PubMed](#)]
- Wischik, C.; Novak, M.; Thøgersen, H.; Edwards, P.; Runswick, M.; Jakes, R.; Walker, J.; Milstein, C.; Roth, M.; Klug, A. Isolation of a fragment of tau derived from the core of the paired helical filament of Alzheimer disease. *Proc. Natl. Acad. Sci. USA* **1988**, *85*, 4506–4510. [[CrossRef](#)] [[PubMed](#)]

10. Cleveland, D.W.; Hwo, S.-Y.; Kirschner, M.W. Physical and chemical properties of purified tau factor and the role of tau in microtubule assembly. *J. Mol. Biol.* **1977**, *116*, 227–247. [[CrossRef](#)]
11. Cleveland, D.W.; Hwo, S.-Y.; Kirschner, M.W. Purification of tau, a microtubule-associated protein that induces assembly of microtubules from purified tubulin. *J. Mol. Biol.* **1977**, *116*, 207–225. [[CrossRef](#)]
12. Martin, L.; Latypova, X.; Terro, F. Post-translational modifications of tau protein: Implications for Alzheimer's disease. *Neurochem. Int.* **2011**, *58*, 458–471. [[CrossRef](#)] [[PubMed](#)]
13. Congdon, E.E.; Sigurdsson, E.M. Tau-targeting therapies for Alzheimer disease. *Nat. Rev. Neurol.* **2018**, *14*, 399–415. [[CrossRef](#)] [[PubMed](#)]
14. Dujardin, S.; Colin, M.; Buée, L. Invited review: Animal models of tauopathies and their implications for research/translation into the clinic. *Neuropathol. Appl. Neurobiol.* **2015**, *41*, 59–80. [[CrossRef](#)] [[PubMed](#)]
15. Goedert, M.; Spillantini, M.; Potier, M.; Ulrich, J.; Crowther, R. Cloning and sequencing of the cDNA encoding an isoform of microtubule-associated protein tau containing four tandem repeats: Differential expression of tau protein mRNAs in human brain. *EMBO J.* **1989**, *8*, 393–399. [[CrossRef](#)]
16. Goedert, M.; Jakes, R. Expression of separate isoforms of human tau protein: Correlation with the tau pattern in brain and effects on tubulin polymerization. *EMBO J.* **1990**, *9*, 4225–4230. [[CrossRef](#)]
17. D'Souza, I.; Schellenberg, G.D. Regulation of tau isoform expression and dementia. *Biochim. Biophys. Acta Mol. Basis Dis.* **2005**, *1739*, 104–115. [[CrossRef](#)] [[PubMed](#)]
18. Dillon, C.; Goda, Y. The actin cytoskeleton: Integrating form and function at the synapse. *Annu. Rev. Neurosci.* **2005**, *28*, 25–55. [[CrossRef](#)] [[PubMed](#)]
19. Tai, H.-C.; Serrano-Pozo, A.; Hashimoto, T.; Frosch, M.P.; Spiess-Jones, T.L.; Hyman, B.T. The synaptic accumulation of hyperphosphorylated tau oligomers in Alzheimer disease is associated with dysfunction of the ubiquitin-proteasome system. *Am. J. Pathol.* **2012**, *181*, 1426–1435. [[CrossRef](#)] [[PubMed](#)]
20. Lee, G.; Newman, S.T.; Gard, D.L.; Band, H.; Panchamoorthy, G. Tau interacts with src-family non-receptor tyrosine kinases. *J. Cell Sci.* **1998**, *111*, 3167–3177. [[CrossRef](#)]
21. Ittner, L.M.; Ke, Y.D.; Delerue, F.; Bi, M.; Gladbach, A.; van Eersel, J.; Wölfing, H.; Chieng, B.C.; Christie, M.J.; Napier, I.A. Dendritic function of tau mediates amyloid- $\beta$  toxicity in Alzheimer's disease mouse models. *Cell* **2010**, *142*, 387–397. [[CrossRef](#)]
22. Sultan, A.; Nesslany, F.; Violet, M.; Bégard, S.; Loyens, A.; Talahari, S.; Mansuroglu, Z.; Marzin, D.; Sergeant, N.; Humez, S. Nuclear tau, a key player in neuronal DNA protection. *J. Biol. Chem.* **2011**, *286*, 4566–4575. [[CrossRef](#)]
23. Violet, M.; Delattre, L.; Tardivel, M.; Sultan, A.; Chauderlier, A.; Caillierez, R.; Talahari, S.; Nesslany, F.; Lefebvre, B.; Bonnefoy, E. A major role for Tau in neuronal DNA and RNA protection in vivo under physiological and hyperthermic conditions. *Front. Cell. Neurosci.* **2014**, *8*, 84. [[CrossRef](#)]
24. Brandt, R.; Léger, J.; Lee, G. Interaction of tau with the neural plasma membrane mediated by tau's amino-terminal projection domain. *J. Cell Biol.* **1995**, *131*, 1327–1340. [[CrossRef](#)]
25. Pooler, A.M.; Usardi, A.; Evans, C.J.; Philpott, K.L.; Noble, W.; Hanger, D.P. Dynamic association of tau with neuronal membranes is regulated by phosphorylation. *Neurobiol. Aging* **2012**, *33*, 431.e27–431.e38. [[CrossRef](#)]
26. Oliveira, J.; Costa, M.; de Almeida, M.S.C.; da Cruz e Silva, O.A.; Henriques, A.G. Protein phosphorylation is a key mechanism in Alzheimer's disease. *J. Alzheimer Dis.* **2017**, *58*, 953–978. [[CrossRef](#)]
27. Kanemaru, K.; Takio, K.; Miura, R.; Titani, K.; Ihara, Y. Fetal-type phosphorylation of the  $\tau$  in paired helical filaments. *J. Neurochem.* **1992**, *58*, 1667–1675. [[CrossRef](#)] [[PubMed](#)]
28. Hong, X.P.; Peng, C.X.; Wei, W.; Tian, Q.; Liu, Y.H.; Yao, X.Q.; Zhang, Y.; Cao, F.Y.; Wang, Q.; Wang, J.Z. Essential role of tau phosphorylation in adult hippocampal neurogenesis. *Hippocampus* **2010**, *20*, 1339–1349. [[CrossRef](#)] [[PubMed](#)]
29. Liu, L.; Drouet, V.; Wu, J.W.; Witter, M.P.; Small, S.A.; Clelland, C.; Duff, K. Trans-synaptic spread of tau pathology in vivo. *PLoS ONE* **2012**, *7*, e31302. [[CrossRef](#)] [[PubMed](#)]
30. Duan, X.-H.; Chang, J.-R.; Zhang, J.; Zhang, B.-H.; Li, Y.-L.; Teng, X.; Zhu, Y.; Du, J.; Tang, C.-S.; Qi, Y.-F. Activating transcription factor 4 is involved in endoplasmic reticulum stress-mediated apoptosis contributing to vascular calcification. *Apoptosis* **2013**, *18*, 1132–1144. [[CrossRef](#)] [[PubMed](#)]
31. Köpke, E.; Tung, Y.-C.; Shaikh, S.; Alonso, A.d.C.; Iqbal, K.; Grundke-Iqbal, I. Microtubule-associated protein tau. Abnormal phosphorylation of a non-paired helical filament pool in Alzheimer disease. *J. Biol. Chem.* **1993**, *268*, 24374–24384. [[CrossRef](#)]
32. Guo, T.; Noble, W.; Hanger, D.P. Roles of tau protein in health and disease. *Acta Neuropathol.* **2017**, *133*, 665–704. [[CrossRef](#)] [[PubMed](#)]
33. Li, C.; Götz, J. Tau-based therapies in neurodegeneration: Opportunities and challenges. *Nat. Rev. Drug Discov.* **2017**, *16*, 863–883. [[CrossRef](#)] [[PubMed](#)]
34. Braak, H.; Braak, E. Neuropathological staging of Alzheimer-related changes. *Acta Neuropathol.* **1991**, *82*, 239–259. [[CrossRef](#)] [[PubMed](#)]
35. Ma, R.-H.; Zhang, Y.; Hong, X.-Y.; Zhang, J.-F.; Wang, J.-Z.; Liu, G.-P. Role of microtubule-associated protein tau phosphorylation in Alzheimer's disease. *J. Huazhong Univ. Sci. Technol. [Med. Sci.]* **2017**, *37*, 307–312. [[CrossRef](#)] [[PubMed](#)]
36. Hanger, D.P.; Anderton, B.H.; Noble, W. Tau phosphorylation: The therapeutic challenge for neurodegenerative disease. *Trends Mol. Med.* **2009**, *15*, 112–119. [[CrossRef](#)] [[PubMed](#)]

37. Rosseels, J.; Van den Brande, J.; Violet, M.; Jacobs, D.; Grognet, P.; Lopez, J.; Huvent, I.; Caldara, M.; Swinnen, E.; Papegaey, A. Tau monoclonal antibody generation based on humanized yeast models: Impact on Tau oligomerization and diagnostics. *J. Biol. Chem.* **2015**, *290*, 4059–4074. [[CrossRef](#)]
38. Vega, I.E.; Cui, L.; Propst, J.A.; Hutton, M.L.; Lee, G.; Yen, S.-H. Increase in tau tyrosine phosphorylation correlates with the formation of tau aggregates. *Mol. Brain Res.* **2005**, *138*, 135–144. [[CrossRef](#)] [[PubMed](#)]
39. Gong, C.X.; Singh, T.J.; Grundke-Iqbal, I.; Iqbal, K. Phosphoprotein phosphatase activities in Alzheimer disease brain. *J. Neurochem.* **1993**, *61*, 921–927. [[CrossRef](#)]
40. Sontag, E.; Hladik, C.; Montgomery, L.; Luangpirom, A.; Mudrak, I.; Ogris, E.; White, C.L., III. Downregulation of protein phosphatase 2A carboxyl methylation and methyltransferase may contribute to Alzheimer disease pathogenesis. *J. Neuropathol. Exp. Neurol.* **2004**, *63*, 1080–1091. [[CrossRef](#)] [[PubMed](#)]
41. Chen, S.; Li, B.; Grundke-Iqbal, I.; Iqbal, K. I PP2A 1 affects Tau phosphorylation via association with the catalytic subunit of protein phosphatase 2A. *J. Biol. Chem.* **2008**, *283*, 10513–10521. [[CrossRef](#)]
42. Von Bergen, M.; Friedhoff, P.; Biernat, J.; Heberle, J.; Mandelkow, E.-M.; Mandelkow, E. Assembly of  $\tau$  protein into Alzheimer paired helical filaments depends on a local sequence motif (306VQIVYK311) forming  $\beta$  structure. *Proc. Natl. Acad. Sci. USA* **2000**, *97*, 5129–5134. [[CrossRef](#)]
43. Sawaya, M.R.; Sambashivan, S.; Nelson, R.; Ivanova, M.I.; Sievers, S.A.; Apostol, M.I.; Thompson, M.J.; Balbirnie, M.; Wiltzius, J.J.; McFarlane, H.T. Atomic structures of amyloid cross- $\beta$  spines reveal varied steric zippers. *Nature* **2007**, *447*, 453–457. [[CrossRef](#)] [[PubMed](#)]
44. Khlistunova, I.; Biernat, J.; Wang, Y.; Pickhardt, M.; von Bergen, M.; Gazova, Z.; Mandelkow, E.; Mandelkow, E.-M. Inducible expression of Tau repeat domain in cell models of tauopathy: Aggregation is toxic to cells but can be reversed by inhibitor drugs. *J. Biol. Chem.* **2006**, *281*, 1205–1214. [[CrossRef](#)]
45. Wille, H.; Drewes, G.; Biernat, J.; Mandelkow, E.-M.; Mandelkow, E. Alzheimer-like paired helical filaments and antiparallel dimers formed from microtubule-associated protein tau in vitro. *J. Cell Biol.* **1992**, *118*, 573–584. [[CrossRef](#)] [[PubMed](#)]
46. Goedert, M.; Jakes, R.; Spillantini, M.; Hasegawa, M.; Smith, M.; Crowther, R. Assembly of microtubule-associated protein tau into Alzheimer-like filaments induced by sulphated glycosaminoglycans. *Nature* **1996**, *383*, 550–553. [[CrossRef](#)] [[PubMed](#)]
47. Kampers, T.; Friedhoff, P.; Biernat, J.; Mandelkow, E.-M.; Mandelkow, E. RNA stimulates aggregation of microtubule-associated protein tau into Alzheimer-like paired helical filaments. *FEBS Lett.* **1996**, *399*, 344–349. [[CrossRef](#)]
48. Fichou, Y.; Oberholtzer, Z.R.; Ngo, H.; Cheng, C.-Y.; Keller, T.J.; Eschmann, N.A.; Han, S. Tau-cofactor complexes as building blocks of tau fibrils. *Front. Neurosci.* **2019**, *13*, 1339. [[CrossRef](#)]
49. Giustiniani, J.; Chambraud, B.; Sardin, E.; Dounane, O.; Guillemeau, K.; Nakatani, H.; Paquet, D.; Kamah, A.; Landrieu, I.; Lippens, G. Immunophilin FKBP52 induces Tau-P301L filamentous assembly in vitro and modulates its activity in a model of tauopathy. *Proc. Natl. Acad. Sci. USA* **2014**, *111*, 4584–4589. [[CrossRef](#)] [[PubMed](#)]
50. Criado-Marrero, M.; Gebru, N.T.; Gould, L.A.; Blazier, D.M.; Vidal-Aguilar, Y.; Smith, T.M.; Abdelmaboud, S.S.; Shelton, L.B.; Wang, X.; Dahrendorff, J. FKBP52 overexpression accelerates hippocampal-dependent memory impairments in a tau transgenic mouse model. *NPJ Aging Mech. Dis.* **2021**, *7*, 1–13. [[CrossRef](#)] [[PubMed](#)]
51. Braak, F.; Braak, H.; Mandelkow, E.-M. A sequence of cytoskeleton changes related to the formation of neurofibrillary tangles and neuropil threads. *Acta Neuropathol.* **1994**, *87*, 554–567. [[CrossRef](#)] [[PubMed](#)]
52. Alonso, A.d.C.; Zaidi, T.; Novak, M.; Grundke-Iqbal, I.; Iqbal, K. Hyperphosphorylation induces self-assembly of  $\tau$  into tangles of paired helical filaments/straight filaments. *Proc. Natl. Acad. Sci. USA* **2001**, *98*, 6923–6928. [[CrossRef](#)] [[PubMed](#)]
53. Schneider, A.; Biernat, J.; Von Bergen, M.; Mandelkow, E.; Mandelkow, E.-M. Phosphorylation that detaches tau protein from microtubules (Ser262, Ser214) also protects it against aggregation into Alzheimer paired helical filaments. *Biochemistry* **1999**, *38*, 3549–3558. [[CrossRef](#)] [[PubMed](#)]
54. Tepper, K.; Biernat, J.; Kumar, S.; Wegmann, S.; Timm, T.; Hübschmann, S.; Redecke, L.; Mandelkow, E.-M.; Müller, D.J.; Mandelkow, E. Oligomer formation of tau protein hyperphosphorylated in cells. *J. Biol. Chem.* **2014**, *289*, 34389–34407. [[CrossRef](#)] [[PubMed](#)]
55. Zilka, N.; Filipcik, P.; Koson, P.; Fialova, L.; Skrabana, R.; Zilkova, M.; Rolkova, G.; Kontsekova, E.; Novak, M. Truncated tau from sporadic Alzheimer's disease suffices to drive neurofibrillary degeneration in vivo. *FEBS Lett.* **2006**, *580*, 3582–3588. [[CrossRef](#)]
56. de Calignon, A.; Fox, L.M.; Pitstick, R.; Carlson, G.A.; Bacskai, B.J.; Spires-Jones, T.L.; Hyman, B.T. Caspase activation precedes and leads to tangles. *Nature* **2010**, *464*, 1201–1204. [[CrossRef](#)]
57. Zhang, Z.; Song, M.; Liu, X.; Kang, S.S.; Kwon, I.-S.; Duong, D.M.; Seyfried, N.T.; Hu, W.T.; Liu, Z.; Wang, J.-Z. Cleavage of tau by asparagine endopeptidase mediates the neurofibrillary pathology in Alzheimer's disease. *Nat. Med.* **2014**, *20*, 1254–1262. [[CrossRef](#)] [[PubMed](#)]
58. Wang, Y.; Biernat, J.; Pickhardt, M.; Mandelkow, E.; Mandelkow, E.-M. Stepwise proteolysis liberates tau fragments that nucleate the Alzheimer-like aggregation of full-length tau in a neuronal cell model. *Proc. Natl. Acad. Sci. USA* **2007**, *104*, 10252–10257. [[CrossRef](#)] [[PubMed](#)]
59. Fatouros, C.; Pir, G.J.; Biernat, J.; Koushika, S.P.; Mandelkow, E.; Mandelkow, E.-M.; Schmidt, E.; Baumeister, R. Inhibition of tau aggregation in a novel *Caenorhabditis elegans* model of tauopathy mitigates proteotoxicity. *Hum. Mol. Genet.* **2012**, *21*, 3587–3603. [[CrossRef](#)] [[PubMed](#)]

60. Clavaguera, F.; Bolmont, T.; Crowther, R.A.; Abramowski, D.; Frank, S.; Probst, A.; Fraser, G.; Stalder, A.K.; Beibel, M.; Staufenbiel, M. Transmission and spreading of tauopathy in transgenic mouse brain. *Nat. Cell Biol.* **2009**, *11*, 909–913. [[CrossRef](#)]
61. Peeraer, E.; Bottelbergs, A.; Van Kolen, K.; Stancu, I.-C.; Vasconcelos, B.; Mahieu, M.; Duytschaever, H.; Ver Donck, L.; Torremans, A.; Sluydts, E. Intracerebral injection of preformed synthetic tau fibrils initiates widespread tauopathy and neuronal loss in the brains of tau transgenic mice. *Neurobiol. Dis.* **2015**, *73*, 83–95. [[CrossRef](#)] [[PubMed](#)]
62. Morsch, R.; Simon, W.; Coleman, P.D. Neurons may live for decades with neurofibrillary tangles. *J. Neuropathol. Exp. Neurol.* **1999**, *58*, 188–197. [[CrossRef](#)] [[PubMed](#)]
63. Spires-Jones, T.L.; De Calignon, A.; Matsui, T.; Zehr, C.; Pitsstick, R.; Wu, H.-Y.; Osetek, J.D.; Jones, P.B.; Bacskai, B.J.; Feany, M.B. In vivo imaging reveals dissociation between caspase activation and acute neuronal death in tangle-bearing neurons. *J. Neurosci.* **2008**, *28*, 862–867. [[CrossRef](#)] [[PubMed](#)]
64. Santacruz, K.; Lewis, J.; Spires, T.; Paulson, J.; Kotilinek, L.; Ingelsson, M.; Guimaraes, A.; DeTure, M.; Ramsden, M.; McGowan, E. Tau suppression in a neurodegenerative mouse model improves memory function. *Science* **2005**, *309*, 476–481. [[CrossRef](#)] [[PubMed](#)]
65. Sydow, A.; Van der Jeugd, A.; Zheng, F.; Ahmed, T.; Balschun, D.; Petrova, O.; Drexler, D.; Zhou, L.; Rune, G.; Mandelkow, E. Tau-induced defects in synaptic plasticity, learning, and memory are reversible in transgenic mice after switching off the toxic Tau mutant. *J. Neurosci.* **2011**, *31*, 2511–2525. [[CrossRef](#)] [[PubMed](#)]
66. Van der Jeugd, A.; Hochgräfe, K.; Ahmed, T.; Decker, J.M.; Sydow, A.; Hofmann, A.; Wu, D.; Messing, L.; Balschun, D.; D’Hooge, R. Cognitive defects are reversible in inducible mice expressing pro-aggregant full-length human Tau. *Acta Neuropathol.* **2012**, *123*, 787–805. [[CrossRef](#)]
67. Maeda, S.; Sahara, N.; Saito, Y.; Murayama, M.; Yoshiike, Y.; Kim, H.; Miyasaka, T.; Murayama, S.; Ikai, A.; Takashima, A. Granular tau oligomers as intermediates of tau filaments. *Biochemistry* **2007**, *46*, 3856–3861. [[CrossRef](#)] [[PubMed](#)]
68. Lasagna-Reeves, C.A.; Castillo-Carranza, D.; Sengupta, U.; Sarmiento, J.; Troncoso, J.; Jackson, G.R.; Kaye, R. Identification of oligomers at early stages of tau aggregation in Alzheimer’s disease. *FASEB J.* **2012**, *26*, 1946–1959. [[CrossRef](#)]
69. Flach, K.; Hilbrich, I.; Schiffmann, A.; Gärtner, U.; Krüger, M.; Leonhardt, M.; Waschipky, H.; Wick, L.; Arendt, T.; Holzer, M. Tau oligomers impair artificial membrane integrity and cellular viability. *J. Biol. Chem.* **2012**, *287*, 43223–43233. [[CrossRef](#)]
70. Tian, H.; Davidowitz, E.; Lopez, P.; Emadi, S.; Moe, J.; Sierks, M. Trimeric tau is toxic to human neuronal cells at low nanomolar concentrations. *Int. J. Cell Biol.* **2013**, *2013*, 260787. [[CrossRef](#)] [[PubMed](#)]
71. Gerson, J.E.; Farmer, K.M.; Henson, N.; Castillo-Carranza, D.L.; Murillo, M.C.; Sengupta, U.; Barrett, A.; Kaye, R. Tau oligomers mediate  $\alpha$ -synuclein toxicity and can be targeted by immunotherapy. *Mol. Neurodegener.* **2018**, *13*, 1–14. [[CrossRef](#)]
72. Alonso, A.d.C.; Li, B.; Grundke-Iqbal, I.; Iqbal, K. Polymerization of hyperphosphorylated tau into filaments eliminates its inhibitory activity. *Proc. Natl. Acad. Sci. USA* **2006**, *103*, 8864–8869. [[CrossRef](#)] [[PubMed](#)]
73. LaPointe, N.E.; Morfini, G.; Pigino, G.; Gaisina, I.N.; Kozikowski, A.P.; Binder, L.I.; Brady, S.T. The amino terminus of tau inhibits kinesin-dependent axonal transport: Implications for filament toxicity. *J. Neurosci. Res.* **2009**, *87*, 440–451. [[CrossRef](#)] [[PubMed](#)]
74. Dikic, I. Proteasomal and Autophagic Degradation Systems. *Annu. Rev. Biochem.* **2017**, *86*, 193–224. [[CrossRef](#)]
75. Petrucelli, L.; Dawson, T. Mechanism of neurodegenerative disease: Role of the ubiquitin proteasome system. *Ann. Med.* **2004**, *36*, 315–320. [[CrossRef](#)] [[PubMed](#)]
76. Shimura, H.; Schwartz, D.; Gygi, S.P.; Kosik, K.S. CHIP-Hsc70 complex ubiquitinates phosphorylated tau and enhances cell survival. *J. Biol. Chem.* **2004**, *279*, 4869–4876. [[CrossRef](#)] [[PubMed](#)]
77. Cripps, D.; Thomas, S.N.; Jeng, Y.; Yang, F.; Davies, P.; Yang, A.J. Alzheimer disease-specific conformation of hyperphosphorylated paired helical filament-Tau is polyubiquitinated through Lys-48, Lys-11, and Lys-6 ubiquitin conjugation. *J. Biol. Chem.* **2006**, *281*, 10825–10838. [[CrossRef](#)] [[PubMed](#)]
78. Myeku, N.; Clelland, C.L.; Emrani, S.; Kukushkin, N.V.; Yu, W.H.; Goldberg, A.L.; Duff, K.E. Tau-driven 26S proteasome impairment and cognitive dysfunction can be prevented early in disease by activating cAMP-PKA signaling. *Nat. Med.* **2016**, *22*, 46. [[CrossRef](#)] [[PubMed](#)]
79. Grune, T.; Botzen, D.; Engels, M.; Voss, P.; Kaiser, B.; Jung, T.; Grimm, S.; Ermak, G.; Davies, K.J. Tau protein degradation is catalyzed by the ATP/ubiquitin-independent 20S proteasome under normal cell conditions. *Arch. Biochem. Biophys.* **2010**, *500*, 181–188. [[CrossRef](#)] [[PubMed](#)]
80. Ravikumar, B.; Sarkar, S.; Davies, J.E.; Futter, M.; Garcia-Arencibia, M.; Green-Thompson, Z.W.; Jimenez-Sanchez, M.; Korolchuk, V.I.; Lichtenberg, M.; Luo, S. Regulation of mammalian autophagy in physiology and pathophysiology. *Physiol. Rev.* **2010**, *90*, 1383–1435. [[CrossRef](#)] [[PubMed](#)]
81. Nixon, R.A.; Wegiel, J.; Kumar, A.; Yu, W.H.; Peterhoff, C.; Cataldo, A.; Cuervo, A.M. Extensive involvement of autophagy in Alzheimer disease: An immuno-electron microscopy study. *J. Neuropathol. Exp. Neurol.* **2005**, *64*, 113–122. [[CrossRef](#)]
82. Bednarski, E.; Lynch, G. Cytosolic proteolysis of  $\tau$  by cathepsin D in hippocampus following suppression of cathepsins B and L. *J. Neurochem.* **1996**, *67*, 1846–1855. [[CrossRef](#)] [[PubMed](#)]
83. Khurana, V.; Elson-Schwab, I.; Fulga, T.A.; Sharp, K.A.; Loewen, C.A.; Mulkearns, E.; Tyynela, J.; Scherzer, C.R.; Feany, M.B. Lysosomal dysfunction promotes cleavage and neurotoxicity of tau in vivo. *PLoS Genet.* **2010**, *6*, e1001026. [[CrossRef](#)] [[PubMed](#)]
84. Bendiske, J.; Bahr, B.A. Lysosomal activation is a compensatory response against protein accumulation and associated synaptopathogenesis—an approach for slowing Alzheimer disease? *J. Neuropathol. Exp. Neurol.* **2003**, *62*, 451–463. [[CrossRef](#)] [[PubMed](#)]

85. Inoue, K.; Rispoli, J.; Kaphzan, H.; Klann, E.; Chen, E.I.; Kim, J.; Komatsu, M.; Abeliovich, A. Macroautophagy deficiency mediates age-dependent neurodegeneration through a phospho-tau pathway. *Mol. Neurodegener.* **2012**, *7*, 48. [[CrossRef](#)] [[PubMed](#)]
86. St Johnston, D. The art and design of genetic screens: *Drosophila melanogaster*. *Nat. Rev. Genet.* **2002**, *3*, 176–188. [[CrossRef](#)] [[PubMed](#)]
87. Tickoo, S.; Russell, S. *Drosophila melanogaster* as a model system for drug discovery and pathway screening. *Curr. Opin. Pharmacol.* **2002**, *2*, 555–560. [[CrossRef](#)]
88. Brand, A.H.; Perrimon, N. Targeted gene expression as a means of altering cell fates and generating dominant phenotypes. *Development* **1993**, *118*, 401–415. [[CrossRef](#)] [[PubMed](#)]
89. Wittmann, C.W.; Wszolek, M.F.; Shulman, J.M.; Salvaterra, P.M.; Lewis, J.; Hutton, M.; Feany, M.B. Tauopathy in *Drosophila*: Neurodegeneration without neurofibrillary tangles. *Science* **2001**, *293*, 711–714. [[CrossRef](#)]
90. Gistelincq, M.; Lambert, J.C.; Callaerts, P.; Dermaut, B.; Dourlen, P. *Drosophila* models of tauopathies: What have we learned? *Int. J. Alzheimer Dis.* **2012**, *2012*, 970980. [[CrossRef](#)]
91. Sivanantharajah, L.; Mudher, A.; Shepherd, D. An evaluation of *Drosophila* as a model system for studying tauopathies such as Alzheimer's disease. *J. Neurosci. Methods* **2019**, *319*, 77–88. [[CrossRef](#)]
92. Subramanian, M.; Hyeon, S.J.; Das, T.; Suh, Y.S.; Kim, Y.K.; Lee, J.S.; Song, E.J.; Ryu, H.; Yu, K. UBE4B, a microRNA-9 target gene, promotes autophagy-mediated Tau degradation. *Nat. Commun.* **2021**, *12*, 3291. [[CrossRef](#)]
93. Heidary, G.; Fortini, M.E. Identification and characterization of the *Drosophila* tau homolog. *Mech. Dev.* **2001**, *108*, 171–178. [[CrossRef](#)]
94. Traven, A.; Jelicic, B.; Sopta, M. Yeast Gal4: A transcriptional paradigm revisited. *EMBO Rep.* **2006**, *7*, 496–499. [[CrossRef](#)]
95. Jackson, G.R.; Wiedau-Pazos, M.; Sang, T.K.; Wagle, N.; Brown, C.A.; Massachi, S.; Geschwind, D.H. Human wild-type tau interacts with wingless pathway components and produces neurofibrillary pathology in *Drosophila*. *Neuron* **2002**, *34*, 509–519. [[CrossRef](#)]
96. Karsten, S.L.; Sang, T.K.; Gehman, L.T.; Chatterjee, S.; Liu, J.; Lawless, G.M.; Sengupta, S.; Berry, R.W.; Pomakian, J.; Oh, H.S.; et al. A genomic screen for modifiers of tauopathy identifies puromycin-sensitive aminopeptidase as an inhibitor of tau-induced neurodegeneration. *Neuron* **2006**, *51*, 549–560. [[CrossRef](#)]
97. Chatterjee, S.; Sang, T.K.; Lawless, G.M.; Jackson, G.R. Dissociation of tau toxicity and phosphorylation: Role of GSK-3beta, MARK and Cdk5 in a *Drosophila* model. *Hum. Mol. Genet.* **2009**, *18*, 164–177. [[CrossRef](#)] [[PubMed](#)]
98. Kosmidis, S.; Grammenoudi, S.; Papanikolopoulou, K.; Skoulakis, E.M. Differential effects of Tau on the integrity and function of neurons essential for learning in *Drosophila*. *J. Neurosci.* **2010**, *30*, 464–477. [[CrossRef](#)] [[PubMed](#)]
99. Nishimura, I.; Yang, Y.; Lu, B. PAR-1 kinase plays an initiator role in a temporally ordered phosphorylation process that confers tau toxicity in *Drosophila*. *Cell* **2004**, *116*, 671–682. [[CrossRef](#)]
100. Steinhilb, M.L.; Dias-Santagata, D.; Fulga, T.A.; Felch, D.L.; Feany, M.B. Tau phosphorylation sites work in concert to promote neurotoxicity in vivo. *Mol. Biol. Cell* **2007**, *18*, 5060–5068. [[CrossRef](#)] [[PubMed](#)]
101. Iijima-Ando, K.; Zhao, L.; Gatt, A.; Shenton, C.; Iijima, K. A DNA damage-activated checkpoint kinase phosphorylates tau and enhances tau-induced neurodegeneration. *Hum. Mol. Genet.* **2010**, *19*, 1930–1938. [[CrossRef](#)] [[PubMed](#)]
102. Talmat-Amar, Y.; Arribat, Y.; Redt-Clouet, C.; Feuillet, S.; Bouge, A.L.; Lecourtois, M.; Parmentier, M.L. Important neuronal toxicity of microtubule-bound Tau in vivo in *Drosophila*. *Hum. Mol. Genet.* **2011**, *20*, 3738–3745. [[CrossRef](#)] [[PubMed](#)]
103. Khurana, V.; Lu, Y.; Steinhilb, M.L.; Oldham, S.; Shulman, J.M.; Feany, M.B. TOR-mediated cell-cycle activation causes neurodegeneration in a *Drosophila* tauopathy model. *Curr. Biol.* **2006**, *16*, 230–241. [[CrossRef](#)] [[PubMed](#)]
104. Reinecke, J.B.; DeVos, S.L.; McGrath, J.P.; Shepard, A.M.; Goncharoff, D.K.; Tait, D.N.; Fleming, S.R.; Vincent, M.P.; Steinhilb, M.L. Implicating calpain in tau-mediated toxicity in vivo. *PLoS ONE* **2011**, *6*, e23865. [[CrossRef](#)] [[PubMed](#)]
105. Beharry, C.; Alaniz, M.E.; Alonso Adel, C. Expression of Alzheimer-like pathological human tau induces a behavioral motor and olfactory learning deficit in *Drosophila melanogaster*. *J. Alzheimer Dis.* **2013**, *37*, 539–550. [[CrossRef](#)] [[PubMed](#)]
106. Williams, D.W.; Tyrer, M.; Shepherd, D. Tau and tau reporters disrupt central projections of sensory neurons in *Drosophila*. *J. Comp. Neurol* **2000**, *428*, 630–640. [[CrossRef](#)]
107. Mudher, A.; Shepherd, D.; Newman, T.A.; Mildren, P.; Jukes, J.P.; Squire, A.; Mears, A.; Drummond, J.A.; Berg, S.; MacKay, D.; et al. GSK-3beta inhibition reverses axonal transport defects and behavioural phenotypes in *Drosophila*. *Mol. Psychiatry* **2004**, *9*, 522–530. [[CrossRef](#)]
108. Cowan, C.M.; Bossing, T.; Page, A.; Shepherd, D.; Mudher, A. Soluble hyper-phosphorylated tau causes microtubule breakdown and functionally compromises normal tau in vivo. *Acta Neuropathol.* **2010**, *120*, 593–604. [[CrossRef](#)] [[PubMed](#)]
109. Doerflinger, H.; Benton, R.; Shulman, J.M.; St Johnston, D. The role of PAR-1 in regulating the polarised microtubule cytoskeleton in the *Drosophila* follicular epithelium. *Development* **2003**, *130*, 3965–3975. [[CrossRef](#)] [[PubMed](#)]
110. Shulman, J.M.; Feany, M.B. Genetic modifiers of tauopathy in *Drosophila*. *Genetics* **2003**, *165*, 1233–1242. [[CrossRef](#)]
111. Dourlen, P. Identification of Tau Toxicity Modifiers in the *Drosophila* Eye. *Methods Mol. Biol.* **2017**, *1523*, 375–389. [[CrossRef](#)]
112. Bolkan, B.J.; Kretzschmar, D. Loss of Tau results in defects in photoreceptor development and progressive neuronal degeneration in *Drosophila*. *Dev. Neurobiol.* **2014**, *74*, 1210–1225. [[CrossRef](#)] [[PubMed](#)]
113. Ando, K.; Maruko-Otake, A.; Ohtake, Y.; Hayashishita, M.; Sekiya, M.; Iijima, K.M. Stabilization of Microtubule-Unbound Tau via Tau Phosphorylation at Ser262/356 by Par-1/MARK Contributes to Augmentation of AD-Related Phosphorylation and Abeta42-Induced Tau Toxicity. *PLoS Genet.* **2016**, *12*, e1005917. [[CrossRef](#)]



114. Dermaut, B.; Norga, K.K.; Kania, A.; Verstreken, P.; Pan, H.; Zhou, Y.; Callaerts, P.; Bellen, H.J. Aberrant lysosomal carbohydrate storage accompanies endocytic defects and neurodegeneration in *Drosophila* benchwarmer. *J. Cell Biol.* **2005**, *170*, 127–139. [[CrossRef](#)]
115. Quintas-Neves, M.; Teylan, M.A.; Besser, L.; Soares-Fernandes, J.; Mock, C.N.; Kukull, W.A.; Crary, J.F.; Oliveira, T.G. Magnetic resonance imaging brain atrophy assessment in primary age-related tauopathy (PART). *Acta Neuropathol. Commun.* **2019**, *7*, 1–9. [[CrossRef](#)] [[PubMed](#)]
116. Heisenberg, M.; Borst, A.; Wagner, S.; Byers, D. *Drosophila* mushroom body mutants are deficient in olfactory learning. *J. Neurogenet.* **1985**, *2*, 1–30. [[CrossRef](#)] [[PubMed](#)]
117. de Belle, J.S.; Heisenberg, M. Associative odor learning in *Drosophila* abolished by chemical ablation of mushroom bodies. *Science* **1994**, *263*, 692–695. [[CrossRef](#)] [[PubMed](#)]
118. Dubnau, J.; Grady, L.; Kitamoto, T.; Tully, T. Disruption of neurotransmission in *Drosophila* mushroom body blocks retrieval but not acquisition of memory. *Nature* **2001**, *411*, 476–480. [[CrossRef](#)]
119. McGuire, S.E.; Le, P.T.; Davis, R.L. The role of *Drosophila* mushroom body signaling in olfactory memory. *Science* **2001**, *293*, 1330–1333. [[CrossRef](#)] [[PubMed](#)]
120. Roman, G.; Davis, R.L. Molecular biology and anatomy of *Drosophila* olfactory associative learning. *Bioessays* **2001**, *23*, 571–581. [[CrossRef](#)] [[PubMed](#)]
121. Mershin, A.; Pavlopoulos, E.; Fitch, O.; Braden, B.C.; Nanopoulos, D.V.; Skoulakis, E.M. Learning and memory deficits upon TAU accumulation in *Drosophila* mushroom body neurons. *Learn. Mem.* **2004**, *11*, 277–287. [[CrossRef](#)] [[PubMed](#)]
122. Ali, Y.O.; Ruan, K.; Zhai, R.G. NMNAT suppresses tau-induced neurodegeneration by promoting clearance of hyperphosphorylated tau oligomers in a *Drosophila* model of tauopathy. *Hum. Mol. Genet.* **2012**, *21*, 237–250. [[CrossRef](#)]
123. Kim, M.; Subramanian, M.; Cho, Y.H.; Kim, G.H.; Lee, E.; Park, J.J. Short-term exposure to dim light at night disrupts rhythmic behaviors and causes neurodegeneration in fly models of tauopathy and Alzheimer’s disease. *Biochem. Biophys. Res. Commun.* **2018**, *495*, 1722–1729. [[CrossRef](#)]
124. Keshishian, H.; Broadie, K.; Chiba, A.; Bate, M. The *Drosophila* neuromuscular junction: A model system for studying synaptic development and function. *Annu. Rev. Neurosci.* **1996**, *19*, 545–575. [[CrossRef](#)]
125. Menon, K.P.; Carrillo, R.A.; Zinn, K. Development and plasticity of the *Drosophila* larval neuromuscular junction. *Wiley Interdiscip. Rev. Dev. Biol.* **2013**, *2*, 647–670. [[CrossRef](#)]
126. Chee, F.C.; Mudher, A.; Cuttle, M.F.; Newman, T.A.; MacKay, D.; Lovestone, S.; Shepherd, D. Over-expression of tau results in defective synaptic transmission in *Drosophila* neuromuscular junctions. *Neurobiol. Dis.* **2005**, *20*, 918–928. [[CrossRef](#)] [[PubMed](#)]
127. Mhatre, S.D.; Satyasi, V.; Killen, M.; Paddock, B.E.; Moir, R.D.; Saunders, A.J.; Marena, D.R. Synaptic abnormalities in a *Drosophila* model of Alzheimer’s disease. *Dis. Models Mech.* **2014**, *7*, 373–385. [[CrossRef](#)] [[PubMed](#)]
128. Lee, B.I.; Suh, Y.S.; Chung, Y.J.; Yu, K.; Park, C.B. Shedding Light on Alzheimer’s beta-Amyloidosis: Photosensitized Methylene Blue Inhibits Self-Assembly of beta-Amyloid Peptides and Disintegrates Their Aggregates. *Sci. Rep.* **2017**, *7*, 7523. [[CrossRef](#)] [[PubMed](#)]
129. Levin, H.L.; Moran, J.V. Dynamic interactions between transposable elements and their hosts. *Nat. Rev. Genet.* **2011**, *12*, 615–627. [[CrossRef](#)] [[PubMed](#)]
130. Baillie, G.S.; Tejada, G.S.; Kelly, M.P. Therapeutic targeting of 3′,5′-cyclic nucleotide phosphodiesterases: Inhibition and beyond. *Nat. Rev. Drug Discov.* **2019**, *18*, 770–796. [[CrossRef](#)]
131. Evrony, G.D.; Cai, X.; Lee, E.; Hills, L.B.; Elhosary, P.C.; Lehmann, H.S.; Parker, J.J.; Atabay, K.D.; Gilmore, E.C.; Poduri, A.; et al. Single-neuron sequencing analysis of L1 retrotransposition and somatic mutation in the human brain. *Cell* **2012**, *151*, 483–496. [[CrossRef](#)] [[PubMed](#)]
132. Upton, K.R.; Gerhard, D.J.; Jesuadian, J.S.; Richardson, S.R.; Sanchez-Luque, F.J.; Bodea, G.O.; Ewing, A.D.; Salvador-Palomeque, C.; van der Knaap, M.S.; Brennan, P.M.; et al. Ubiquitous L1 mosaicism in hippocampal neurons. *Cell* **2015**, *161*, 228–239. [[CrossRef](#)]
133. Muotri, A.R.; Chu, V.T.; Marchetto, M.C.; Deng, W.; Moran, J.V.; Gage, F.H. Somatic mosaicism in neuronal precursor cells mediated by L1 retrotransposition. *Nature* **2005**, *435*, 903–910. [[CrossRef](#)] [[PubMed](#)]
134. Perrat, P.N.; DasGupta, S.; Wang, J.; Theurkauf, W.; Weng, Z.; Rosbash, M.; Waddell, S. Transposition-driven genomic heterogeneity in the *Drosophila* brain. *Science* **2013**, *340*, 91–95. [[CrossRef](#)] [[PubMed](#)]
135. Moschetti, R.; Palazzo, A.; Lorusso, P.; Viggiano, L.; Marsano, R.M. “What You Need, Baby, I Got It”: Transposable Elements as Suppliers of Cis-Operating Sequences in *Drosophila*. *Biology* **2020**, *9*, 25. [[CrossRef](#)]
136. Guo, C.; Jeong, H.H.; Hsieh, Y.C.; Klein, H.U.; Bennett, D.A.; De Jager, P.L.; Liu, Z.; Shulman, J.M. Tau Activates Transposable Elements in Alzheimer’s Disease. *Cell Rep.* **2018**, *23*, 2874–2880. [[CrossRef](#)] [[PubMed](#)]
137. Sun, W.; Samimi, H.; Gamez, M.; Zare, H.; Frost, B. Pathogenic tau-induced piRNA depletion promotes neuronal death through transposable element dysregulation in neurodegenerative tauopathies. *Nat. Neurosci.* **2018**, *21*, 1038–1048. [[CrossRef](#)]
138. Peng, H.; Chung, P.; Long, F.; Qu, L.; Jenett, A.; Seeds, A.M.; Myers, E.W.; Simpson, J.H. BrainAligner: 3D registration atlases of *Drosophila* brains. *Nat. Methods* **2011**, *8*, 493–498. [[CrossRef](#)] [[PubMed](#)]
139. Kaiser, M. Neuroanatomy: Connectome connects fly and mammalian brain networks. *Curr. Biol.* **2015**, *25*, R416–R418. [[CrossRef](#)] [[PubMed](#)]

140. Guo, A.; Li, H.; Li, Y.; Liu, L.; Liu, Q.; Lu, H.; Pan, Y.; Wu, Z.; Zhang, K.; Zhu, Y. Vision, memory, and cognition in *Drosophila*. *Learn. Theory Behav.* **2017**, *483–503*.
141. Hindle, S.J.; Bainton, R.J. Barrier mechanisms in the *Drosophila* blood-brain barrier. *Front. Neurosci.* **2014**, *8*, 414. [[CrossRef](#)] [[PubMed](#)]
142. Salminen, T.S.; Vale, P.F. *Drosophila* as a model system to investigate the effects of mitochondrial variation on innate immunity. *Front. Immunol.* **2020**, *11*, 521. [[CrossRef](#)]
143. Pandey, M.K.; DeGrado, T.R. Glycogen Synthase Kinase-3 (GSK-3)-Targeted Therapy and Imaging. *Theranostics* **2016**, *6*, 571–593. [[CrossRef](#)] [[PubMed](#)]
144. Zhao, N.; Sun, C.; Zheng, M.; Liu, S.; Shi, R. Amentoflavone suppresses amyloid beta1-42 neurotoxicity in Alzheimer's disease through the inhibition of pyroptosis. *Life Sci.* **2019**, *239*, 117043. [[CrossRef](#)] [[PubMed](#)]
145. Cheng, X.; Song, C.; Du, Y.; Gaur, U.; Yang, M. Pharmacological Treatment of Alzheimer's Disease: Insights from *Drosophila melanogaster*. *Int. J. Mol. Sci.* **2020**, *21*, 4621. [[CrossRef](#)]
146. Colodner, K.J.; Feany, M.B. Glial fibrillary tangles and JAK/STAT-mediated glial and neuronal cell death in a *Drosophila* model of glial tauopathy. *J. Neurosci.* **2010**, *30*, 16102–16113. [[CrossRef](#)] [[PubMed](#)]
147. Lasagna-Reeves, C.A.; de Haro, M.; Hao, S.; Park, J.; Rousseaux, M.W.; Al-Ramahi, I.; Jafar-Nejad, P.; Vilanova-Velez, L.; See, L.; De Maio, A.; et al. Reduction of Nuak1 Decreases Tau and Reverses Phenotypes in a Tauopathy Mouse Model. *Neuron* **2016**, *92*, 407–418. [[CrossRef](#)]
148. Blard, O.; Feuillet, S.; Bou, J.; Chaumette, B.; Frebourg, T.; Campion, D.; Lecourtois, M. Cytoskeleton proteins are modulators of mutant tau-induced neurodegeneration in *Drosophila*. *Hum. Mol. Genet.* **2007**, *16*, 555–566. [[CrossRef](#)] [[PubMed](#)]
149. Ambegaokar, S.S.; Jackson, G.R. Functional genomic screen and network analysis reveal novel modifiers of tauopathy dissociated from tau phosphorylation. *Hum. Mol. Genet.* **2011**, *20*, 4947–4977. [[CrossRef](#)]
150. Shim, K.H.; Kim, S.H.; Hur, J.; Kim, D.H.; Demirev, A.V.; Yoon, S.Y. Small-molecule drug screening identifies drug Ro 31-8220 that reduces toxic phosphorylated tau in *Drosophila melanogaster*. *Neurobiol. Dis.* **2019**, *130*, 104519. [[CrossRef](#)]
151. Appocher, C.; Klima, R.; Feiguin, F. Functional screening in *Drosophila* reveals the conserved role of REEP1 in promoting stress resistance and preventing the formation of Tau aggregates. *Hum. Mol. Genet.* **2014**, *23*, 6762–6772. [[CrossRef](#)] [[PubMed](#)]
152. Shulman, J.M.; Imboywa, S.; Giagtzoglou, N.; Powers, M.P.; Hu, Y.; Devenport, D.; Chipendo, P.; Chibnik, L.B.; Diamond, A.; Perrimon, N.; et al. Functional screening in *Drosophila* identifies Alzheimer's disease susceptibility genes and implicates Tau-mediated mechanisms. *Hum. Mol. Genet.* **2014**, *23*, 870–877. [[CrossRef](#)] [[PubMed](#)]
153. Zon, L.I.; Peterson, R.T. In vivo drug discovery in the zebrafish. *Nat. Rev. Drug Discov.* **2005**, *4*, 35–44. [[CrossRef](#)] [[PubMed](#)]
154. Kimmel, C.B. Patterning the brain of the zebrafish embryo. *Annu. Rev. Neurosci.* **1993**, *16*, 707–732. [[CrossRef](#)] [[PubMed](#)]
155. Rupp, B.; Reichert, H. *Neuroanatomy of the Zebrafish Brain: A Topological Atlas*; Birkhauser: Basel, Switzerland, 1996.
156. Howe, K.; Clark, M.D.; Torroja, C.F.; Tarrance, J.; Berthelot, C.; Muffato, M.; Collins, J.E.; Humphray, S.; McLaren, K.; Matthews, L. The zebrafish reference genome sequence and its relationship to the human genome. *Nature* **2013**, *496*, 498–503. [[CrossRef](#)] [[PubMed](#)]
157. Kawakami, K. Transposon tools and methods in zebrafish. *Dev. Dyn. Off. Publ. Am. Assoc. Anat.* **2005**, *234*, 244–254. [[CrossRef](#)]
158. Halpern, M.E.; Rhee, J.; Goll, M.G.; Akitake, C.M.; Parsons, M.; Leach, S.D. Gal4/UAS transgenic tools and their application to zebrafish. *Zebrafish* **2008**, *5*, 97–110. [[CrossRef](#)] [[PubMed](#)]
159. Hans, S.; Kaslin, J.; Freudenreich, D.; Brand, M. Temporally-controlled site-specific recombination in zebrafish. *PLoS ONE* **2009**, *4*, e4640. [[CrossRef](#)]
160. Schmid, B.; Haass, C. Genomic editing opens new avenues for zebrafish as a model for neurodegeneration. *J. Neurochem.* **2013**, *127*, 461–470. [[CrossRef](#)] [[PubMed](#)]
161. Chen, J.; Poskanzer, K.E.; Freeman, M.R.; Monk, K.R. Live-imaging of astrocyte morphogenesis and function in zebrafish neural circuits. *Nat. Neurosci.* **2020**, *23*, 1297–1306. [[CrossRef](#)]
162. Noorbakhsh, F.; Overall, C.M.; Power, C. Deciphering complex mechanisms in neurodegenerative diseases: The advent of systems biology. *Trends Neurosci.* **2009**, *32*, 88–100. [[CrossRef](#)] [[PubMed](#)]
163. Sabaliauskas, N.A.; Foutz, C.A.; Mest, J.R.; Budgeon, L.R.; Sidor, A.T.; Gershenson, J.A.; Joshi, S.B.; Cheng, K.C. High-throughput zebrafish histology. *Methods* **2006**, *39*, 246–254. [[CrossRef](#)]
164. Green, J.; Collins, C.; Kyzar, E.J.; Pham, M.; Roth, A.; Gaikwad, S.; Cachat, J.; Stewart, A.M.; Landsman, S.; Grieco, F. Automated high-throughput neurophenotyping of zebrafish social behavior. *J. Neurosci. Methods* **2012**, *210*, 266–271. [[CrossRef](#)] [[PubMed](#)]
165. Cho, H.J.; Lee, J.G.; Kim, J.H.; Kim, S.Y.; Huh, Y.H.; Kim, H.J.; Lee, K.S.; Yu, K.; Lee, J.S. Vascular defects of DYRK1A knockouts are ameliorated by modulating calcium signaling in zebrafish. *Dis. Model. Mech.* **2019**, *12*, dmm037044. [[CrossRef](#)] [[PubMed](#)]
166. Patton, E.E.; Zon, L.I.; Langenau, D.M. Zebrafish disease models in drug discovery: From preclinical modelling to clinical trials. *Nat. Rev. Drug Discov.* **2021**, *20*, 611–628. [[CrossRef](#)]
167. Griffin, A.; Hamling, K.R.; Knupp, K.; Hong, S.; Lee, L.P.; Baraban, S.C. Clemizole and modulators of serotonin signalling suppress seizures in Dravet syndrome. *Brain* **2017**, *140*, 669–683. [[CrossRef](#)] [[PubMed](#)]
168. Chen, M.; Martins, R.N.; Lardelli, M. Complex splicing and neural expression of duplicated tau genes in zebrafish embryos. *J. Alzheimer Dis.* **2009**, *18*, 305–317. [[CrossRef](#)]

169. Paquet, D.; Bhat, R.; Sydow, A.; Mandelkow, E.-M.; Berg, S.; Hellberg, S.; Fälting, J.; Distel, M.; Köster, R.W.; Schmid, B. A zebrafish model of tauopathy allows in vivo imaging of neuronal cell death and drug evaluation. *J. Clin. Investig.* **2009**, *119*, 1382–1395. [[CrossRef](#)] [[PubMed](#)]
170. Lopez, A.; Lee, S.E.; Wojta, K.; Ramos, E.M.; Klein, E.; Chen, J.; Boxer, A.L.; Gorno-Tempini, M.L.; Geschwind, D.H.; Schlotawa, L. A152T tau allele causes neurodegeneration that can be ameliorated in a zebrafish model by autophagy induction. *Brain* **2017**, *140*, 1128–1146. [[CrossRef](#)]
171. Tomaszewicz, H.G.; Flaherty, D.B.; Soria, J.; Wood, J.G. Transgenic zebrafish model of neurodegeneration. *J. Neurosci. Res.* **2002**, *70*, 734–745. [[CrossRef](#)] [[PubMed](#)]
172. Bai, Q.; Garver, J.A.; Hukriede, N.A.; Burton, E.A. Generation of a transgenic zebrafish model of Tauopathy using a novel promoter element derived from the zebrafish *eno2* gene. *Nucleic Acids Res.* **2007**, *35*, 6501–6516. [[CrossRef](#)] [[PubMed](#)]
173. Wu, B.-K.; Yuan, R.-Y.; Lien, H.-W.; Hung, C.-C.; Hwang, P.-P.; Chen, R.P.-Y.; Chang, C.-C.; Liao, Y.-F.; Huang, C.-J. Multiple signaling factors and drugs alleviate neuronal death induced by expression of human and zebrafish tau proteins in vivo. *J. Biomed. Sci.* **2016**, *23*, 25. [[CrossRef](#)]
174. Cosacak, M.I.; Bhattarai, P.; Bocova, L.; Dzewas, T.; Mashkaryan, V.; Papadimitriou, C.; Brandt, K.; Hollak, H.; Antos, C.L.; Kizil, C. Human TAU P301L overexpression results in TAU hyperphosphorylation without neurofibrillary tangles in adult zebrafish brain. *Sci. Rep.* **2017**, *7*, 12959. [[CrossRef](#)]
175. Alyenbaawi, H.; Kanyo, R.; Locskai, L.F.; Kamali-Jamil, R.; DuVal, M.G.; Bai, Q.; Wille, H.; Burton, E.A.; Allison, W.T. Seizures are a druggable mechanistic link between TBI and subsequent tauopathy. *eLife* **2021**, *10*, e58744. [[CrossRef](#)] [[PubMed](#)]
176. Curado, S.; Anderson, R.M.; Jungblut, B.; Mumm, J.; Schroeter, E.; Stainier, D.Y. Conditional targeted cell ablation in zebrafish: A new tool for regeneration studies. *Dev. Dyn. Off. Publ. Am. Assoc. Anat.* **2007**, *236*, 1025–1035. [[CrossRef](#)]
177. van Ham, T.J.; Mapes, J.; Kokel, D.; Peterson, R.T. Live imaging of apoptotic cells in zebrafish. *FASEB J.* **2010**, *24*, 4336–4342. [[PubMed](#)]
178. Ghetti, B.; Oblak, A.L.; Boeve, B.F.; Johnson, K.A.; Dickerson, B.C.; Goedert, M. Invited review: Frontotemporal dementia caused by microtubule-associated protein tau gene (MAPT) mutations: A chameleon for neuropathology and neuroimaging. *Neuropathol. Appl. Neurobiol.* **2015**, *41*, 24–46. [[CrossRef](#)] [[PubMed](#)]
179. Masters, C.L.; Bateman, R.; Blennow, K.; Rowe, C.C.; Sperling, R.A.; Cummings, J.L. Alzheimer's disease. *Nat. Rev. Dis. Primers* **2015**, *1*, 15056. [[CrossRef](#)] [[PubMed](#)]
180. Babin, P.J.; Goizet, C.; Raldúa, D. Zebrafish models of human motor neuron diseases: Advantages and limitations. *Prog. Neurobiol.* **2014**, *118*, 36–58. [[CrossRef](#)] [[PubMed](#)]
181. Zelenchuk, T.A.; Brusés, J.L. In vivo labeling of zebrafish motor neurons using an *mxn1* enhancer and Gal4/UAS. *Genesis* **2011**, *49*, 546–554. [[CrossRef](#)]
182. Trevarrow, B.; Marks, D.L.; Kimmel, C.B. Organization of hindbrain segments in the zebrafish embryo. *Neuron* **1990**, *4*, 669–679. [[CrossRef](#)]
183. Kamei, M.; Weinstein, B.M. Long-term time-lapse fluorescence imaging of developing zebrafish. *Zebrafish* **2005**, *2*, 113–123. [[CrossRef](#)] [[PubMed](#)]
184. Colwill, R.M.; Creton, R. Locomotor behaviors in zebrafish (*Danio rerio*) larvae. *Behav. Process.* **2011**, *86*, 222–229. [[CrossRef](#)] [[PubMed](#)]
185. Kyriakatos, A.; Mahmood, R.; Ausborn, J.; Porres, C.P.; Büschges, A.; El Manira, A. Initiation of locomotion in adult zebrafish. *J. Neurosci.* **2011**, *31*, 8422–8431. [[CrossRef](#)]
186. Osmulski, P.A.; Hochstrasser, M.; Gaczynska, M. A tetrahedral transition state at the active sites of the 20S proteasome is coupled to opening of the  $\alpha$ -ring channel. *Structure* **2009**, *17*, 1137–1147. [[CrossRef](#)] [[PubMed](#)]
187. Ben-Nissan, G.; Sharon, M. Regulating the 20S proteasome ubiquitin-independent degradation pathway. *Biomolecules* **2014**, *4*, 862–884. [[CrossRef](#)] [[PubMed](#)]
188. Wang, P.; Joberty, G.; Buist, A.; Vanoosthuysse, A.; Stancu, I.-C.; Vasconcelos, B.; Pierrot, N.; Faeltsh-Savitski, M.; Kienlen-Campard, P.; Octave, J.-N. Tau interactome mapping based identification of Otub1 as Tau deubiquitinase involved in accumulation of pathological Tau forms in vitro and in vivo. *Acta Neuropathol.* **2017**, *133*, 731–749. [[CrossRef](#)] [[PubMed](#)]
189. Njomen, E.; Osmulski, P.A.; Jones, C.L.; Gaczynska, M.; Tepe, J.J. Small molecule modulation of proteasome assembly. *Biochemistry* **2018**, *57*, 4214–4224. [[CrossRef](#)]
190. McKinnon, C.; Tabrizi, S.J. The ubiquitin-proteasome system in neurodegeneration. *Antioxid. Redox Signal.* **2014**, *21*, 2302–2321. [[CrossRef](#)]
191. Imamura, S.; Yabu, T.; Yamashita, M. Protective role of cell division cycle 48 (CDC48) protein against neurodegeneration via ubiquitin-proteasome system dysfunction during zebrafish development. *J. Biol. Chem.* **2012**, *287*, 23047–23056. [[CrossRef](#)]
192. Mathai, B.J.; Meijer, A.H.; Simonsen, A. Studying Autophagy in Zebrafish. *Cells* **2017**, *6*, 21. [[CrossRef](#)]
193. Plucinska, G.; Paquet, D.; Hruscha, A.; Godinho, L.; Haass, C.; Schmid, B.; Misgeld, T. In vivo imaging of disease-related mitochondrial dynamics in a vertebrate model system. *J. Neurosci.* **2012**, *32*, 16203–16212. [[CrossRef](#)] [[PubMed](#)]
194. Drewes, G.; Ebnet, A.; Preuss, U.; Mandelkow, E.-M.; Mandelkow, E. MARK, a novel family of protein kinases that phosphorylate microtubule-associated proteins and trigger microtubule disruption. *Cell* **1997**, *89*, 297–308. [[CrossRef](#)]
195. Hassan-Abdi, R.; Brenet, A.; Bennis, M.; Yanicostas, C.; Soussi-Yanicostas, N. Neurons Expressing Pathological Tau Protein Trigger Dramatic Changes in Microglial Morphology and Dynamics. *Front. Neurosci.* **2019**, *13*, 1199. [[CrossRef](#)]

196. Zuccato, C.; Cattaneo, E. Brain-derived neurotrophic factor in neurodegenerative diseases. *Nat. Rev. Neurol.* **2009**, *5*, 311–322. [[CrossRef](#)] [[PubMed](#)]
197. Barbereau, C.; Yehya, A.; Silhol, M.; Cubedo, N.; Verdier, J.M.; Maurice, T.; Rossel, M. Neuroprotective brain-derived neurotrophic factor signaling in the TAU-P301L tauopathy zebrafish model. *Pharm. Res.* **2020**, *158*, 104865. [[CrossRef](#)] [[PubMed](#)]
198. Sepulveda-Diaz, J.E.; Alavi Naini, S.M.; Huynh, M.B.; Ouidja, M.O.; Yanicostas, C.; Chantepie, S.; Villares, J.; Lamari, F.; Jospin, E.; van Kuppevelt, T.H.; et al. HS3ST2 expression is critical for the abnormal phosphorylation of tau in Alzheimer's disease-related tau pathology. *Brain* **2015**, *138*, 1339–1354. [[CrossRef](#)] [[PubMed](#)]
199. Moussaed, M.; Huc-Brandt, S.; Cubedo, N.; Silhol, M.; Murat, S.; Lebart, M.C.; Kovacs, G.; Verdier, J.M.; Trousse, F.; Rossel, M.; et al. Regenerating islet-derived 1alpha (REG-1alpha) protein increases tau phosphorylation in cell and animal models of tauopathies. *Neurobiol. Dis.* **2018**, *119*, 136–148. [[CrossRef](#)] [[PubMed](#)]
200. Smith, D.G.; Buffet, M.; Fenwick, A.E.; Haigh, D.; Ife, R.J.; Saunders, M.; Slingsby, B.P.; Stacey, R.; Ward, R.W. 3-Anilino-4-arylmaleimides: Potent and selective inhibitors of glycogen synthase kinase-3 (GSK-3). *Bioorganic Med. Chem. Lett.* **2001**, *11*, 635–639. [[CrossRef](#)]
201. Faria-Ramos, I.; Poças, J.; Marques, C.; Santos-Antunes, J.; Macedo, G.; Reis, C.A.; Magalhães, A. Heparan Sulfate Glycosaminoglycans:(Un) Expected Allies in Cancer Clinical Management. *Biomolecules* **2021**, *11*, 136. [[CrossRef](#)]
202. Lanzi, C.; Cassinelli, G. Heparan sulfate mimetics in cancer therapy: The challenge to define structural determinants and the relevance of targets for optimal activity. *Molecules* **2018**, *23*, 2915. [[CrossRef](#)]
203. Alavi Naini, S.M.; Yanicostas, C.; Hassan-Abdi, R.; Blondeel, S.; Bennis, M.; Weiss, R.J.; Tor, Y.; Esko, J.D.; Soussi-Yanicostas, N. Surfen and oxalyl surfen decrease tau hyperphosphorylation and mitigate neuron deficits in vivo in a zebrafish model of tauopathy. *Transl. Neurodegener.* **2018**, *7*, 6. [[CrossRef](#)] [[PubMed](#)]
204. VerPlank, J.J.S.; Tyrkalska, S.D.; Fleming, A.; Rubinsztein, D.C.; Goldberg, A.L. cGMP via PKG activates 26S proteasomes and enhances degradation of proteins, including ones that cause neurodegenerative diseases. *Proc. Natl. Acad. Sci. USA* **2020**, *117*, 14220–14230. [[CrossRef](#)]
205. Wu, B.K.; Yuan, R.Y.; Chang, Y.P.; Lien, H.W.; Chen, T.S.; Chien, H.C.; Tong, T.S.; Tsai, H.P.; Fang, C.L.; Liao, Y.F.; et al. Epicatechin isolated from *Tripterygium wilfordii* extract reduces tau-GFP-induced neurotoxicity in zebrafish embryo through the activation of Nrf2. *Biochem. Biophys. Res. Commun.* **2016**, *477*, 283–289. [[CrossRef](#)] [[PubMed](#)]
206. Ward, S.; Carrel, J.S. Fertilization and sperm competition in the nematode *Caenorhabditis elegans*. *Dev. Biol.* **1979**, *73*, 304–321. [[CrossRef](#)]
207. Kimble, J.; Crittenden, S.L. Germline Proliferation and Its Control. In *WormBook; The C. elegans Research Community*: Pasadena, CA, USA, 2005. [[CrossRef](#)]
208. Kobet, R.A.; Pan, X.; Zhang, B.; Pak, S.C.; Asch, A.S.; Lee, M.-H. *Caenorhabditis elegans*: A model system for anti-cancer drug discovery and therapeutic target identification. *Biomol. Ther.* **2014**, *22*, 371. [[CrossRef](#)] [[PubMed](#)]
209. Kim, W.; Hendricks, G.L.; Lee, K.; Mylonakis, E. An update on the use of *C. elegans* for preclinical drug discovery: Screening and identifying anti-infective drugs. *Expert Opin. Drug Discov.* **2017**, *12*, 625–633. [[CrossRef](#)] [[PubMed](#)]
210. Cook, S.J.; Jarrell, T.A.; Brittin, C.A.; Wang, Y.; Bloniarz, A.E.; Yakovlev, M.A.; Nguyen, K.C.; Tang, L.T.-H.; Bayer, E.A.; Duerr, J.S. Whole-animal connectomes of both *Caenorhabditis elegans* sexes. *Nature* **2019**, *571*, 63–71. [[CrossRef](#)]
211. Chalfie, M.; Tu, Y.; Euskirchen, G.; Ward, W.W.; Prasher, D.C. Green fluorescent protein as a marker for gene expression. *Science* **1994**, *263*, 802–805. [[CrossRef](#)]
212. Chen, X.; Barclay, J.W.; Burgoyne, R.D.; Morgan, A. Using *C. elegans* to discover therapeutic compounds for ageing-associated neurodegenerative diseases. *Chem. Cent. J.* **2015**, *9*, 1–20. [[CrossRef](#)]
213. Kim, W.; Underwood, R.S.; Greenwald, I.; Shaye, D.D. OrthoList 2: A new comparative genomic analysis of human and *Caenorhabditis elegans* genes. *Genetics* **2018**, *210*, 445–461. [[CrossRef](#)]
214. The *C. elegans* Sequencing Consortium. Genome sequence of the nematode *C. elegans*: A platform for investigating biology. *Science* **1998**, *282*, 2012–2018. [[CrossRef](#)] [[PubMed](#)]
215. Hammarlund, M.; Hobert, O.; Miller, D.M., 3rd; Sestan, N. The CeNGEN project: The complete gene expression map of an entire nervous system. *Neuron* **2018**, *99*, 430–433. [[CrossRef](#)] [[PubMed](#)]
216. Berkowitz, L.A.; Knight, A.L.; Caldwell, G.A.; Caldwell, K.A. Generation of stable transgenic *C. elegans* using microinjection. *J. Vis. Exp.* **2008**. [[CrossRef](#)] [[PubMed](#)]
217. Schweinsberg, P.J.; Grant, B.D. *C. elegans* gene transformation by microparticle bombardment. In *WormBook; The C. elegans Research Community*: Pasadena, CA, USA, 2018. [[CrossRef](#)]
218. McDermott, J.B.; Aamodt, S.; Aamodt, E. *ptl-1*, a *Caenorhabditis elegans* gene whose products are homologous to the  $\tau$  microtubule-associated proteins. *Biochemistry* **1996**, *35*, 9415–9423. [[CrossRef](#)] [[PubMed](#)]
219. Kraemer, B.C.; Zhang, B.; Leverenz, J.B.; Thomas, J.H.; Trojanowski, J.Q.; Schellenberg, G.D. Neurodegeneration and defective neurotransmission in a *Caenorhabditis elegans* model of tauopathy. *Proc. Natl. Acad. Sci. USA* **2003**, *100*, 9980–9985. [[CrossRef](#)] [[PubMed](#)]
220. Miyasaka, T.; Ding, Z.; Gengyo-Ando, K.; Oue, M.; Yamaguchi, H.; Mitani, S.; Ihara, Y. Progressive neurodegeneration in *C. elegans* model of tauopathy. *Neurobiol. Dis.* **2005**, *20*, 372–383. [[CrossRef](#)]

221. Brandt, R.; Gergou, A.; Wacker, I.; Fath, T.; Hutter, H. A *Caenorhabditis elegans* model of tau hyperphosphorylation: Induction of developmental defects by transgenic overexpression of Alzheimer's disease-like modified tau. *Neurobiol. Aging* **2009**, *30*, 22–33. [[CrossRef](#)]
222. Pir, G.J.; Choudhary, B.; Mandelkow, E.; Mandelkow, E.-M. Tau mutant A152T, a risk factor for FTD/PSP, induces neuronal dysfunction and reduced lifespan independently of aggregation in a *C. elegans* Tauopathy model. *Mol. Neurodegener.* **2016**, *11*, 1–21. [[CrossRef](#)]
223. Morelli, F.; Romeo, M.; Barzago, M.M.; Bolis, M.; Mattioni, D.; Rossi, G.; Tagliavini, F.; Bastone, A.; Salmona, M.; Diomede, L. V363I and V363A mutated tau affect aggregation and neuronal dysfunction differently in *C. elegans*. *Neurobiol. Dis.* **2018**, *117*, 226–234. [[CrossRef](#)]
224. Guha, S.; Fischer, S.; Johnson, G.V.; Nehrke, K. Tauopathy-associated tau modifications selectively impact neurodegeneration and mitophagy in a novel *C. elegans* single-copy transgenic model. *Mol. Neurodegener.* **2020**, *15*, 65. [[CrossRef](#)]
225. Park, H.-E.H.; Jung, Y.; Lee, S.-J.V. Survival assays using *Caenorhabditis elegans*. *Mol. Cells* **2017**, *40*, 90. [[CrossRef](#)]
226. Stiernagle, T. Maintenance of *C. elegans*. *C. Elegans* **1999**, *2*, 51–67. [[CrossRef](#)] [[PubMed](#)]
227. Amrit, F.R.G.; Ratnappan, R.; Keith, S.A.; Ghazi, A. The *C. elegans* lifespan assay toolkit. *Methods* **2014**, *68*, 465–475. [[CrossRef](#)]
228. Lettre, G.; Hengartner, M.O. Developmental apoptosis in *C. elegans*: A complex CEDnario. *Nat. Rev. Mol. Cell Biol.* **2006**, *7*, 97–108. [[CrossRef](#)] [[PubMed](#)]
229. Bargmann, C.I. Chemosensation in *C. elegans*. In *WormBook*; The *C. elegans* Research Community: Pasadena, CA, USA, 2006. [[CrossRef](#)]
230. Laughlin, S.T.; Bertozzi, C.R. In vivo imaging of *Caenorhabditis elegans* glycans. *ACS Chem. Biol.* **2009**, *4*, 1068–1072. [[CrossRef](#)] [[PubMed](#)]
231. Kerk, S.Y.; Kratsios, P.; Hart, M.; Mourao, R.; Hobert, O. Diversification of *C. elegans* motor neuron identity via selective effector gene repression. *Neuron* **2017**, *93*, 80–98. [[CrossRef](#)]
232. Van Krugten, J.; TARIS, K.K.; Peterman, E.J. Imaging adult *C. elegans* live using light-sheet microscopy. *J. Microsc.* **2021**, *281*, 214–223. [[CrossRef](#)]
233. Atakan, H.B.; Alkanat, T.; Cornaglia, M.; Trouillon, R.; Gijis, M.A. Automated phenotyping of *Caenorhabditis elegans* embryos with a high-throughput-screening microfluidic platform. *Microsyst. Nanoeng.* **2020**, *6*, 24. [[CrossRef](#)]
234. Nawa, M.; Matsuoka, M. The method of the body bending assay using *Caenorhabditis elegans*. *Bio-Protocol* **2012**, *2*, e253. [[CrossRef](#)]
235. Buckingham, S.D.; Sattelle, D.B. Strategies for automated analysis of *C. elegans* locomotion. *Invertebr. Neurosci.* **2008**, *8*, 121. [[CrossRef](#)]
236. Zhen, M.; Samuel, A.D. *C. elegans* locomotion: Small circuits, complex functions. *Curr. Opin. Neurobiol.* **2015**, *33*, 117–126. [[CrossRef](#)] [[PubMed](#)]
237. Celniker, S.E.; Dillon, L.A.; Gerstein, M.B.; Gunsalus, K.C.; Henikoff, S.; Karpen, G.H.; Kellis, M.; Lai, E.C.; Lieb, J.D.; MacAlpine, D.M. Unlocking the secrets of the genome. *Nature* **2009**, *459*, 927–930. [[CrossRef](#)]
238. Fire, A.; Xu, S.; Montgomery, M.K.; Kostas, S.A.; Driver, S.E.; Mello, C.C. Potent and specific genetic interference by double-stranded RNA in *Caenorhabditis elegans*. *Nature* **1998**, *391*, 806–811. [[CrossRef](#)] [[PubMed](#)]
239. Timmons, L.; Tabara, H.; Mello, C.C.; Fire, A.Z. Inducible systemic RNA silencing in *Caenorhabditis elegans*. *Mol. Biol. Cell* **2003**, *14*, 2972–2983. [[CrossRef](#)]
240. Asikainen, S.; Vartiainen, S.; Lakso, M.; Nass, R.; Wong, G. Selective sensitivity of *Caenorhabditis elegans* neurons to RNA interference. *Neuroreport* **2005**, *16*, 1995–1999. [[CrossRef](#)]
241. Corsi, A.K.; Wightman, B.; Chalfie, M. A transparent window into biology: A primer on *Caenorhabditis elegans*. *Genetics* **2015**, *200*, 387–407. [[CrossRef](#)]
242. Katz, M.; Shaham, S. Learning and Memory: Mind over Matter in *C. elegans*. *Curr. Biol.* **2019**, *29*, R365–R367. [[CrossRef](#)] [[PubMed](#)]
243. Rankin, C.H. But can they learn? My accidental discovery of learning and memory in *C. elegans*. *J. Neurogenet.* **2020**, *34*, 251–254. [[CrossRef](#)] [[PubMed](#)]
244. Schlipalius, D.I.; Valmas, N.; Tuck, A.G.; Jagadeesan, R.; Ma, L.; Kaur, R.; Goldinger, A.; Anderson, C.; Kuang, J.; Zuryn, S. A core metabolic enzyme mediates resistance to phosphine gas. *Science* **2012**, *338*, 807–810. [[CrossRef](#)]
245. Ahmad, W.; Ijaz, B.; Shabbiri, K.; Ahmed, F.; Rehman, S. Oxidative toxicity in diabetes and Alzheimer's disease: Mechanisms behind ROS/RNS generation. *J. Biomed. Sci.* **2017**, *24*, 1–10. [[CrossRef](#)]
246. Ahmad, W. Dihydrolipoamide dehydrogenase suppression induces human tau phosphorylation by increasing whole body glucose levels in a *C. elegans* model of Alzheimer's Disease. *Exp. Brain Res.* **2018**, *236*, 2857–2866. [[CrossRef](#)] [[PubMed](#)]
247. Rajput, A.; Dickson, D.; Robinson, C.; Ross, O.; Dächsel, J.; Lincoln, S.; Cobb, S.; Rajput, M.; Farrer, M. Parkinsonism, Lrrk2 G2019S, and tau neuropathology. *Neurology* **2006**, *67*, 1506–1508. [[CrossRef](#)] [[PubMed](#)]
248. Di Domenico, F.; Sultana, R.; Ferree, A.; Smith, K.; Barone, E.; Perluigi, M.; Coccia, R.; Pierce, W.; Cai, J.; Mancuso, C.; et al. Redox proteomics analyses of the influence of co-expression of wild-type or mutated LRRK2 and Tau on *C. elegans* protein expression and oxidative modification: Relevance to Parkinson disease. *Antioxid Redox Signal.* **2012**, *17*, 1490–1506. [[CrossRef](#)] [[PubMed](#)]
249. Choudhary, B.; Mandelkow, E.; Mandelkow, E.M.; Pir, G.J. Glutamatergic nervous system degeneration in a *C. elegans* Tau(A152T) tauopathy model involves pathways of excitotoxicity and Ca(2+) dysregulation. *Neurobiol. Dis.* **2018**, *117*, 189–202. [[CrossRef](#)]

250. Salehi, B.; Stojanović-Radić, Z.; Matejić, J.; Sharifi-Rad, M.; Kumar, N.V.A.; Martins, N.; Sharifi-Rad, J. The therapeutic potential of curcumin: A review of clinical trials. *Eur. J. Med. Chem.* **2019**, *163*, 527–545. [[CrossRef](#)] [[PubMed](#)]
251. Chandra, V.; Pandav, R.; Dodge, H.; Johnston, J.; Belle, S.; DeKosky, S.; Ganguli, M. Incidence of Alzheimer's disease in a rural community in India: The Indo-US study. *Neurology* **2001**, *57*, 985–989. [[CrossRef](#)]
252. Miyasaka, T.; Xie, C.; Yoshimura, S.; Shinzaki, Y.; Yoshina, S.; Kage-Nakadai, E.; Mitani, S.; Ihara, Y. Curcumin improves tau-induced neuronal dysfunction of nematodes. *Neurobiol. Aging* **2016**, *39*, 69–81. [[CrossRef](#)]
253. Miyasaka, T.; Shinzaki, Y.; Yoshimura, S.; Yoshina, S.; Kage-Nakadai, E.; Mitani, S.; Ihara, Y. Imbalanced Expression of Tau and Tubulin Induces Neuronal Dysfunction in *C. elegans* Models of Tauopathy. *Front. Neurosci.* **2018**, *12*, 415. [[CrossRef](#)]
254. Kraemer, B.C.; Burgess, J.K.; Chen, J.H.; Thomas, J.H.; Schellenberg, G.D. Molecular pathways that influence human tau-induced pathology in *Caenorhabditis elegans*. *Hum. Mol. Genet.* **2006**, *15*, 1483–1496. [[CrossRef](#)] [[PubMed](#)]
255. Kraemer, B.C.; Schellenberg, G.D. SUT-1 enables tau-induced neurotoxicity in *C. elegans*. *Hum. Mol. Genet.* **2007**, *16*, 1959–1971. [[CrossRef](#)] [[PubMed](#)]
256. Guthrie, C.R.; Schellenberg, G.D.; Kraemer, B.C. SUT-2 potentiates tau-induced neurotoxicity in *Caenorhabditis elegans*. *Hum. Mol. Genet.* **2009**, *18*, 1825–1838. [[CrossRef](#)] [[PubMed](#)]
257. Guthrie, C.R.; Greenup, L.; Leverenz, J.B.; Kraemer, B.C. MSUT2 is a determinant of susceptibility to tau neurotoxicity. *Hum. Mol. Genet.* **2011**, *20*, 1989–1999. [[CrossRef](#)] [[PubMed](#)]