



# Insights into a possible role of glucagon-like peptide-1 receptor agonists in the treatment of depression

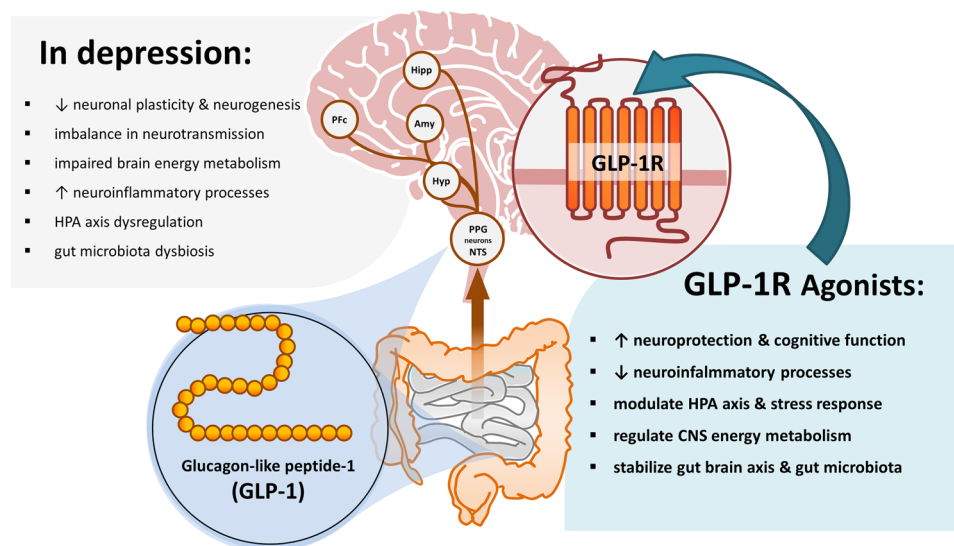
Jan Detka<sup>1</sup> · Katarzyna Głombik<sup>1</sup>

Received: 31 January 2021 / Revised: 4 May 2021 / Accepted: 6 May 2021 / Published online: 18 May 2021  
© The Author(s) 2021

## Abstract

Depression is a highly prevalent mood disorder and one of the major health concerns in modern society. Moreover, it is characterized by a high prevalence of coexistence with many other diseases including metabolic disorders such as type 2 diabetes mellitus (T2DM) and obesity. Currently used antidepressant drugs, which mostly target brain monoaminergic neurotransmission, have limited clinical efficacy. Although the etiology of depression has not been fully elucidated, current scientific data emphasize the role of neurotrophic factors deficiencies, disturbed homeostasis between the nervous system and the immune and endocrine systems, as well as disturbances in brain energy metabolism and dysfunctions in the gut-brain axis as important factors in the pathogenesis of this neuropsychiatric disorder. Therefore, therapeutic options that could work in a way other than classic antidepressants are being sought to increase the effectiveness of the treatment. Interestingly, glucagon-like peptide-1 receptor agonists (GLP-1RAs), used in the treatment of T2DM and obesity, are known to show pro-cognitive and neuroprotective properties, and exert modulatory effects on immune, endocrine and metabolic processes in the central nervous system. This review article discusses the potential antidepressant effects of GLP-1RAs, especially in the context of their action on the processes related to neuroprotection, inflammation, stress response, energy metabolism, gut-brain crosstalk and the stability of the gut microbiota.

## Graphic abstract



**Keywords** GLP-1 · Exendin-4 · Liraglutide · Depression · HPA axis · Gut-brain axis

✉ Jan Detka  
detka@if-pan.krakow.pl

Extended author information available on the last page of the article

## Abbreviations

5-HIAA	5-Hydroxyindoleacetic acid
5-HT	Serotonin (5-hydroxytryptamine)
BBB	Blood–brain barrier
BDNF	Brain-derived neurotrophic factor
cAMP	Cyclic adenosine monophosphate
CRH	Corticotropin-releasing hormone
CRP	C-reactive protein
DPP-4	Dipeptidyl peptidase-4
GABA	Gamma aminobutyric acid
GLP-1	Glucagon-like peptide-1
GLP-1R	Glucagon-like-1 peptide receptor
GLP-1RA	Glucagon-like-1 peptide receptor agonist
HPA	Hypothalamic–pituitary–adrenal axis
<i>Icv</i>	Intracerebroventricular
<i>Ip</i>	Intraperitoneal
IL-1 $\beta$	Interleukin-1 beta
IL-6	Interleukin-6
NF- $\kappa$ B	Nuclear factor kappa-light-chain-enhancer of activated B cells
NTS	Nucleus tractus solitarius
PKA	Protein kinase A
PPG	Preproglucagon
PVN	Paraventricular nucleus
SCFA	Short chain fatty acid
T2DM	Type 2 diabetes mellitus
TNF- $\alpha$	Tumor necrosis factor alpha
VTA	Ventral tegmental area

## Introduction

Depression is a chronic and recurrent mood disorder and one of the major health concerns in modern society, which, according to the World Health Organization (WHO), affects more than 264 million people worldwide. It is estimated that 76–85% of people living in low- or middle-income countries and suffering from this mental illness are not adequately treated [1]. Clinical effectiveness of currently used antidepressant drugs, which target monoaminergic systems in the brain mainly by enhancing serotonergic and noradrenergic neurotransmission, is very often low and insufficient since approximately only one-third of the patients achieve complete remission of depressive symptoms after therapy. Therefore, therapeutic options that could work in a way other than classic antidepressants are being sought to increase the effectiveness of the depression treatment [2].

The limited efficacy of current antidepressant therapies can be explained by the heterogeneity of depressive disorders. Even though extensive research conducted over the last years did not unequivocally establish the etiology of depression, it revealed the complexity of its pathogenesis. In addition to blunted monoaminergic neurotransmission,

it was also shown that deficiency in neurotrophic factor effects, disturbances in neurogenesis and synaptogenesis, chronic neuroinflammatory processes, and dysregulation of the hypothalamic–pituitary–adrenal (HPA) axis can largely contribute to the manifestation of depressive symptoms in patients [3–5].

Many recent studies also focus on the metabolic aspects of depression, suggesting the involvement of peripheral and central impairments in energy homeostasis, mitochondrial dysfunction, as well as disturbances in the gut–brain axis and gut microbiota dysbiosis as noteworthy factors in the pathogenesis of depression [6–9]. Moreover, depression is characterized by high prevalence of coexistence with many metabolic diseases, such as type 2 diabetes mellitus (T2DM) and obesity, and brain insulin resistance observed in both of these diseases is currently considered an important factor which may lead to the manifestation of depressive symptoms [10, 11].

Glucagon-like peptide-1 (GLP-1) is a glucoregulatory hormone synthesized in the intestines and the brain, involved in the maintenance of energy homeostasis mainly by stimulating insulin secretion and regulation of appetite. GLP-1 exerts its biological effects by binding to a specific receptor (GLP-1R), which is expressed in different types of peripheral tissues and in the central nervous system [12]. Studies on insulinotropic and anorexigenic effects of GLP-1 only recently have led to the development of a new class of drugs, often referred to as incretin drugs, which act as GLP-1 receptor agonists (GLP-1RAs) and are currently implemented in therapy for T2DM [13]. Lately, a GLP-1R agonist, liraglutide, has also been approved by the FDA for the treatment of adolescent obesity [14].

Recently, in addition to the central maintenance of food intake, GLP-1R signaling has begun to be considered in the context of the regulation of the stress response, as it is indicated that it can activate both the hypothalamic–pituitary–adrenal (HPA) axis as well as the sympathetic nervous system [15, 16]. Numerous reports also emphasize the neuroprotective role of GLP-1 mediated signaling, as it was proven to protect synapses, improve synaptic functions, enhance neurogenesis, protect neurons from oxidative stress, and reduce neuronal apoptosis. Therefore, GLP-1R agonists are currently being intensively studied for their use in the treatment of neurodegenerative diseases such as Alzheimer's disease and Parkinson's disease [17, 18]. Moreover, there are a few studies which indicate that these compounds may also prove useful in the treatment of neuropsychiatric disorders including depression [19, 20].

This review article aims at discussing the potential of therapeutic GLP-1 receptor agonists in alleviating depressive symptoms in the context of modern theories surrounding the pathogenesis of this disease and explores their influence on cognitive processes, neurotransmission, modulation of

neuroinflammatory processes, effects on HPA axis activity, brain energy balance, and the functioning of the gut-brain axis.

## Physiology of peripheral and central GLP-1 signaling

GLP-1 is a 30-amino acid peptide synthesized by enteroendocrine L cells of the small and large intestine, and also in the brain primarily by neurons of the nucleus tractus solitarius (NTS) within the caudal brainstem as a product of tissue-specific posttranslational cleavage of a larger precursor molecule proglucagon (PPG). In the periphery, GLP-1 is released from the gut in response to the presence of food nutrients. Its main functions include stimulation of insulin synthesis and secretion from pancreatic  $\beta$  cells, enhancement of the sensitivity of target organs to insulin, inhibition of glucagon synthesis, and slowing gastric emptying. At the same time, GLP-1 can also enhance the proliferation and differentiation of  $\beta$  cells and protect them from apoptosis [21].

Glucagon-like peptide-1 receptor (GLP-1R) belongs to the family B of G-protein coupled receptors (GPCR). This relatively small GPCR family is characterized by a long extracellular ligand-binding domain stabilized by three disulfide bridges formed by six highly conserved cysteine residues, seven  $\alpha$ -helical transmembrane domains, universal for all GPCRs and an intracellular C-terminal domain, responsible mostly for receptor internalization due to the presence of multiple phosphorylation sites [22, 23]. Intracellular signaling, followed by the activation of GLP-1Rs, is mostly mediated through the  $G\alpha_s$  subunit and the activation of adenylyl cyclase, which increases the levels of cyclic adenosine monophosphate (cAMP). This, in turn, stimulates downstream signaling elements dependent on both protein kinase A (PKA) and exchange protein directly activated by cAMP (EPAC) activation, which triggers the opening of voltage-dependent calcium channels (VDCCs), resulting in insulin exocytosis [24, 25]. However, some studies show that the activation of GLP-1Rs can also initiate different intracellular pathways mediated by  $G\alpha_q$  and  $G\alpha_i$  [26]. GLP-1Rs are expressed in the pancreas, stomach, intestines, heart, kidneys, lungs as well as multiple regions of the brain [27–29].

Activation of GLP-1 signaling in the brain is mostly triggered by its peripheral release. Upon its secretion from the gut, GLP-1 activates GLP-1Rs located on the vagus nerve afferents, which leads to vagal glutamatergic excitation of PPG expressing neurons in the NTS [30]. The role of GLP-1 in the nervous system largely, but not exclusively, complements peripheral actions of this peptide and encompasses suppression of food and water intake and the reduction of appetite and food reward. However, this anorexigenic action of GLP-1 is maintained through a complex neural circuitry

and involves multiple brain areas [25, 31]. Proglucagon expressing neurons in the NTS project to many parts of the brain, including the hypothalamus, thalamus, parabrachial nucleus, parts of the mesolimbic dopamine system, raphe nucleus, amygdala, hippocampus and medial prefrontal cortex [32]. Distribution of GLP-1Rs in the brain is highly conserved in different mammalian species and pretty much correlates with the projection pattern of PPG-expressing neurons [33]. Suppression of food and water intake by GLP-1 mainly involves interactions with various hypothalamic nuclei, particularly the arcuate and paraventricular nucleus, as well as some hindbrain structures such as the parabrachial nucleus [31].

Interestingly, GLP-1 is also known to decrease the rewarding effects of food intake by interacting with parts of the mesolimbic dopamine system such as the ventral tegmental area (VTA), nucleus accumbens (NAc) [34], and also GABAergic circuits in the laterodorsal tegmental nucleus (LDTg) [35], which makes brain GLP-1R signaling a promising target for the treatment of alcohol and cocaine abuse disorders [36, 37].

## Characteristics of therapeutic GLP-1R agonists

Endogenous GLP-1 is characterized by a very short half-life of only few minutes, as it is quickly degraded by dipeptidyl peptidase-4 (DPP4), an enzyme expressed in many different types of tissues. All of the five therapeutic GLP-1RAs, currently approved for therapy of type 2 diabetes, are peptide molecules, which are administered in subcutaneous injections. They were developed on the basis of either human GLP-1 or exendin-4, a 39-amino acid peptide isolated from the Gila monster (*Heloderma suspectum*) venom, which shares 53% homology with GLP-1 [38]. These molecules are more resistant to degradation by DPP-4, which results in a prolonged half-life in comparison with endogenous GLP-1. However, because of the structural differences among different therapeutic GLP-1RAs, there is also a significant distinction in their stability, which affects their administration schedule, and thus they are often classified as either short- or long-acting. Short-acting GLP-1RAs, which present a half-life of 3–4 h, include exenatide, administered twice daily, and lixisenatide, administered once daily, are both exendin-4 derivatives. Long-acting GLP-1RAs are synthetic peptide molecules with modifications which further improve their stability. For example, liraglutide and semaglutide have the attachments of fatty acid residues, which enable their reversible binding to albumin, while drugs such as dulaglutide and abiglutide are recombinant fusion proteins containing human immunoglobulin G or albumin chains [13]. Both short- and long-acting GLP-1RAs such as exenatide,

lixisenatide and liraglutide were shown to effectively cross the blood–brain barrier (BBB) [39–41]. Semaglutide on the other hand displays limited efficacy in crossing the BBB, but despite this fact it was proven to access the brainstem, septal nucleus and hypothalamus [42].

### **GLP-1R signaling in the brain exerts antidepressive effects by improving cognitive processes, promoting neuroprotection and neurotransmitter release**

Patients suffering from depression are characterized by impaired neuronal activity and synaptic plasticity dysfunction, resulting in volumetric changes in brain regions which regulate emotions or the stress response such as the hippocampus and the prefrontal cortex. The hippocampus, a brain structure associated with memory formation, seems to be particularly affected in depression [43, 44]. Considering the relationship between GLP-1 signaling and behavioral symptoms characteristic of depression, it was shown that intracerebroventricular (*icv*) administration of both GLP-1 and exendin-4 enhances associative and spatial learning, while these effects are inhibited by a GLP-1R antagonist. It is noteworthy that a behavioral analysis of *Glp1r*<sup>+/+</sup>, *Glp1r*<sup>+/-</sup> and *Glp1r*<sup>-/-</sup> mouse phenotypes and hippocampal *Glp1r* gene transfer demonstrated that deficiency of this receptor results in decrements in the acquisition of associative contextual learning which can be improved by hippocampal *Glp1r* somatic cell gene transfer [45]. Recent data have indicated that such an effect may depend on the influence on metabolic processes because in chronic unpredictable mild stress (CUMS) in mice, the decreased GLP-1 level in the hippocampus was increased with metformin treatment [46]. Metformin has been found to produce antidepressive effects by enhancing the responsiveness of the serotonergic neurons in the dorsal raphe [47], but the main impact of GLP-1 is exerted by AMP-activated protein kinase (AMPK), a major cellular regulator of lipid and glucose metabolism [48]. Liraglutide administration weakened depressive- and anxiety-like behaviors in a depression mouse model of chronic administration of corticosterone and attenuated hyperactivity induced by this steroid. Additionally, chronic liraglutide treatment protected synaptic plasticity impairments and, in contrast to fluoxetine, attenuated the inhibition of long-term potentiation in the hippocampus, which was induced by corticosterone in 30-day treatment [49]. What is more, it seems that GLP-1R agonists may be useful as an adjunctive to traditional therapy to treat cognitive impairments observed in the course of depression, especially in women. Studies on mice demonstrated that administration of

exendin-4 (*ip*) prior to cognitive tests enhanced performance during difficult probe tests but only in females [50].

For a long time, the manifestation of depressive symptoms has been also associated with the deficits in neurotrophic factor action in the brain [51], especially highlighting the role of diminished brain-derived neurotrophic factor (BDNF) signaling as important for the pathogenesis of this mental disorder [52]. GLP-1R agonists in animal models of many neurodegenerative diseases repeatedly increased the expression of BDNF in the brain. For example, a novel dual agonist of GLP-1/GIP receptors significantly increased BDNF levels in a mouse model of Parkinson's disease, induced by 1-methyl-4-phenyl-1,2,3,6-tetrahydropyridine (MPTP) administration [53]. Recently, an increase in BDNF synthesis has been demonstrated in a pentylenetetrazol (PTZ) kindling model of epilepsy, after chronic treatment with liraglutide in combination with antiepileptic drug, levetiracetam, which also exerted antidepressive effects, e.g. by decreasing immobility time in the forced swim test [54].

On the other hand, in addition to the processes described above, it has been well established that neurotransmitters play a key role in behavior regulation and this is a clear relationship between their imbalance and specific symptoms of a major depressive disorder [55]. Data have shown that an *icv* injection of GLP-1 diminished the level of 5-HT in the hypothalamus of Sprague–Dawley rats compared with control animals. Moreover, administration of exendin-4 led to a reduction in 5-HT and 5-HIAA, whereas GLP-1R antagonists increased the levels of serotonin and its metabolites [56]. Furthermore, it was demonstrated that GLP-1 receptor plays a regulatory role in the hippocampal function and GLP-1 receptor agonists enhanced GABAA signaling through pre- and postsynaptic mechanisms in rats [57], while exendin-4 therapy normalized cognitive dysfunction and improved impaired hippocampal synaptic plasticity in a mice model of diet-induced obesity [58]. Summing up, it seems that the role of the GLP-1 pathway in the regulation of neurotransmission in the central nervous system cannot be omitted when assessing the influence of this factor on changes observed in depression.

### **GLP-1R agonists may exert antidepressant effects by modulating inflammatory processes in the brain**

Chronic inflammatory processes in the brain associated with excessive activation of microglia and increased production of pro-inflammatory cytokines are one of the key factors leading to the development of depressive symptoms, as patients suffering from this mental illness are very often characterized by elevated levels of tumor necrosis factor-alpha (TNF- $\alpha$ ), interleukin-6 (IL-6), interleukin-1 beta

(IL-1 $\beta$ ), C-reactive protein (CRP), and interferon-gamma (IFN- $\gamma$ ) in the cerebrospinal fluid and the blood [59–61].

GLP-1 as well as its stable therapeutic analogs were shown to decrease the levels of inflammatory markers in peripheral tissues and brain cells. For example, exendin-4 at the concentration of 50 nM downregulated the expression of NF- $\kappa$ B p65 in isolated human pancreatic  $\beta$  cells [62]. Moreover, treatment with GLP-1 resulted in a decrease of lipopolysaccharide (LPS)-induced activation of the BV-2 microglial cell line, accompanied by a decrease in TNF- $\alpha$  secretion [63]. In a recent study by Shan et al. [64], which involved a co-culture of primary astrocytes with the bEnd.3 endothelial cell line, incubation with exendin-4 reduced the levels of the astrocyte-derived vascular endothelial growth factor (VEGF-A), matrix metalloproteinase-9 (MMP-9), chemokine monocyte chemoattractant protein-1 (MCP-1), and the chemokine C-X-C motif ligand 1 (CXCL-1), induced by oxygen–glucose deprivation (OGD), and subsequently led to the increased expression of tight junction proteins in the bEnd.3 cells. These results may suggest that GLP-1R agonists may alleviate the blood–brain barrier breakdown induced by inflammatory factors, which is sometimes observed in depression [65].

Neuroprotective properties of GLP-1RAs observed in animal models of neurodegenerative diseases such as Alzheimer's disease are very often associated with the reduction of inflammatory processes in the central nervous system. In APP/PS1 mice, the cognitive improvement observed after *ip* administration of liraglutide was accompanied by decreased activation of microglia [66]. In the light of the current research, it is not known whether GLP-1RAs can also reduce the inflammatory component in animal models of depression. In one study, it was demonstrated that exendin-4 prevented LPS-induced depressive-like symptoms in rats and displayed antidepressant-like properties measured in the forced swim test, but this effect was not mediated by the modulation of neuroinflammatory processes, since the levels of IL-1 $\beta$  and TNF- $\alpha$  were not affected by exendin-4 treatment [67]. Thus, further studies are needed to better elucidate the effects of different GLP-1R agonists on anti-inflammatory actions in depression.

### **The role of brain GLP-1 signaling in the modulation of the stress response and anxiety-like behavior and its association with depression**

Under a stress stimulus, the HPA axis becomes activated which results in the release of glucocorticoids [68]. It is known that the acute HPA response to stress plays an important role and has numerous functions which promote cells survival, but chronic activation of this axis by stressful

episodes may lead to a wide range of pathological conditions, including depression. It is estimated that nearly 60% of depressive episodes are preceded by an exposure to various types of stressors [69]. Depressed patients are often characterized by elevated blood cortisol levels and changes in the circadian secretion of this hormone, an increased number of corticotropin-releasing hormone (CRH)-expressing neurons in the hypothalamic paraventricular nucleus (PVN), as well as an impairment in a negative feedback mechanism, which can be measured in the dexamethasone suppression test [70, 71].

The role of GLP-1 in the regulation of the stress axis seems to be undeniable. GLP-1 immunoreactive fibers and nerve terminals are distributed in the parvocellular parts of the PVN and innervate this structure, directly connecting GLP-1 with the CRH neurons [72]. Direct influence of GLP-1R agonists on CRH expression was also observed in both an *in vitro* cellular model [73] and experimental animals [74]. It was demonstrated that GLP-1 brain administration elevated the circulating concentrations of the adrenocorticotrophic hormone (ACTH) and corticosterone and also enhanced anxiety in behavioral measurements [75]. The stimulatory effects of GLP-1 on the HPA axis were not limited to rodents; increased cortisol levels were observed in both healthy humans and type 1 diabetes patients to whom GLP-1 had been administered peripherally [76]. Recent findings from studies on humans and animals demonstrate that GLP-1R agonists can also modulate the stress response via HPA axis activation but data obtained so far are ambiguous. These data showed that subchronic (7 to 14 days) exendin-4 or liraglutide administration in rodents resulted in hyperactivation of the HPA, disruption of glucocorticoid circadian secretion, hypertrophy of the adrenal gland, and dysregulation of pituitary-adrenal stress responses [77]. Conversely, in a recent randomized, double-blind, placebo-controlled study involving twenty healthy volunteers, a once-weekly injection of a GLP-1R agonist, dulaglutide, for three weeks did not influence HPA axis activity, showing no significant effects on circadian rhythms of blood or salivary cortisol secretion, and the level of this hormone also was not changed after the dexamethasone suppression test in comparison with the placebo-receiving group [78]. However, at this point it should be noted that different incretin drugs are characterized by different pharmacokinetics, and therefore, they are taken by patients at different time intervals. Thus, they may have a different effect on the activity of the HPA axis in humans.

There are also some data suggesting that excessive glucocorticoid action under stress can influence the endogenous GLP-1 system. Recent *post mortem* studies revealed that GLP-1R expression was downregulated in the dorsal lateral prefrontal cortex and hippocampus of patients suffering from mood disorders, and those changes further correlated with an elevated body mass index (BMI) [79]. In animal

studies, administration of dexamethasone caused a reduction of GLP-1 secretion from the intestinal L cells [80] and also decreased the circulating levels of this peptide, which led to glucose intolerance and peripheral insulin resistance in rats [81]. In other experiments, acute stress also caused rapid downregulation of preproglucagon gene expression in the NTS neurons in rat brains [82]. In our studies conducted in a prenatal stress model (PS) of depression in rats, adult PS animals showed a significant decrease in GLP-1R protein levels in the hippocampus after the acute immobility stress [83]. The concentration of this receptor was also reduced in the hippocampus of prenatally stressed rats subsequent to a 12-week high-fat diet [84]. Taken together, these results may suggest that GLP-1 is an important mediator of the stress response in the brain. It is also noteworthy that central GLP-1R signaling appears to be impaired in chronic stress conditions or under the influence of a high concentration of glucocorticoids, often observed in patients with depression.

Depression is a disorder which often coexists with anxiety or significant anxiety symptoms [85]. GLP-1 has been tested as a regulator of anxiety behavior and both GLP-1 and exendin-4 (administered *ip*, into the lateral ventricle or intra-dorsal raphe) induced anxiety-like behavior, which was measured in the black and white box, elevated plus maze and open field tests in Sprague-Dawley rats [86]. Nonetheless, the neural base of anxiety from which GLP-1 exerts its anxiogenic effect remains unclear. The supramammillary nucleus, located in the hypothalamus, is a new candidate that appears to be responsible for GLP-1 mediated anxiety effects because selective activation of GLP-1Rs in this nucleus by exendin-4 resulted in intensified anxiety-like behavior both in male and female rats. Interestingly, selective knockdown of GLP-1Rs in the supramammillary nucleus led to anxiolytic response, which was observed only in females [87]. It is known that women are diagnosed with an anxiety disorder twice as likely as men, and the GLP-1 pathway may be involved in this dependence.

### **GLP-1R signaling regulates brain energy homeostasis and may improve mitochondrial function in depression**

In addition to the disturbed neuroimmune and neuroendocrine crosstalk, disruptions in brain metabolism and mitochondrial functions seem to be an emergent field of interest in the context of depression pathogenesis. Alterations in mitochondrial functions such as oxidative phosphorylation (OXPHOS) and membrane polarity, which enhance oxidative stress and apoptosis, may precede the development of depressive symptoms [84, 88, 89]. Growing body of evidence suggests that dysfunction of the GLP-1 pathway, which directly targets mitochondria and preserves

mitochondrial functions, contributes to the pathophysiology of depression [86]. As an insulinotropic hormone, GLP-1 plays a substantial role in the regulation of glucose homeostasis, not only in the periphery but also in the central nervous system [90]. On the other hand, disturbances observed in the course of depression do not clearly indicate whether they are the effects of disruption of metabolic processes in the brain. Nevertheless, it is known that in a normal *in vivo* state, glucose is the only significant metabolism substrate in the brain which determines the proper functions of neurons. Thus, metabolic changes may be key players in many disorders, including depression [91, 92].

In animal models of neurodegenerative diseases, it has been demonstrated that administration of GLP-1RAs can result in the improvement of mitochondrial stability. Pretreatment with liraglutide (25 nmol/kg; *ip*) for 7 days resulted in the alleviation of mitochondrial stress induced by status epilepticus in the hippocampus of Sprague-Dawley rats [93]. In a focal cerebral cortical ischemic mouse model, liraglutide improved motor functional recovery and promoted axonal sprouting by restoring the activities of several Krebs cycle enzymes, *i.e.* isocitrate dehydrogenase,  $\alpha$ -ketoglutarate dehydrogenase, and succinate dehydrogenase, and at the same time reduced generation of reactive oxygen species stabilized the mitochondrial membrane potential, enhanced the levels of ATP, and enhanced the activity of the mitochondrial complex I [94].

Most studies of central glucose homeostasis have focused on neurons. However, recent data also suggest that astrocytes may be involved in systemic energy balance control. These brain cells rely on glycolysis in energy generation and produce lactate, which serves as both main energy fuel and a signaling molecule for neurons. It was demonstrated, that metabolic disturbances in hypothalamic astrocytes, caused either by selective knock-out of insulin receptors or decreased generation of reactive oxygen species (ROS) modulated glucose transport via BBB and also led to modification in behavioral responses in experimental animals [95, 96]. On the other hand, GLP-1R signaling in astrocytes was proven to be essential for maintaining mitochondrial integrity and function of the hypothalamic astrocytes, as deletion of GLP-1Rs resulted in the adaptive cellular stress response with the improvement of glucose metabolism and memory formation [97].

### **GLP-1R agonists may improve the function of the gut-brain axis and stability of the gut microbiota**

Many recent reports also emphasize the role of the gut-brain axis and stability of the gut microbiota in the development of mood disorders, including depression. The gastrointestinal

tract and the brain are involved in a complex bidirectional communication, which is mediated by the endocrine, immune and neural pathways, involving a plethora of different neurotransmitters, cytokines and peptide hormones [98]. People with depression are often characterized by a significantly lower number of microorganisms in the GI tract along with a decreased diversity of the gut microbiome [99]. In the light of the current research, it is speculated that the maladaptive changes in the gut microbiota can influence the central nervous system and evoke depressive symptoms, and the development of depression can influence gut microbiome stability, and both of these hypotheses appear to be supported by the results of human and animal studies [100]. For example, in the studies carried out by Kelly et al. [99], which involved transplantations of fecal microbiota obtained from depressed patients into a microbiota-depleted antibiotic rat model, the animals developed depressive-like symptoms, which were manifested by behavioral differences such as decreased sucrose intake in the sucrose preference test, a lower number of entries to an open arm in the elevated plus-maze test, and an increase in a plasma kynurenine/tryptophan ratio. Similar results were observed in an experiment involving a germ-free mouse strain, where the animals transplanted with microbiome isolated from depressed patients showed an increase in immobility time in the forced swim test and a decreased proportion of central motion distance in the open field test, compared to mice transplanted with bacteria obtained from healthy control subjects [101]. On the other hand, it was demonstrated that chronic stress in laboratory animals can shift the microbial diversity in the gastrointestinal tract [102, 103]. Dysbiosis of the gut microbiome observed in depressed patients can also be caused by treatment with some antidepressant drugs due to their antimicrobial activity [104].

The gut microbiota may influence the functioning of the host organism by modulating innate and adaptive immune responses [105]. Importantly, they can also convert indigestible carbohydrates into short-chain fatty acids (SCFA), which in turn activate specific G protein-coupled fatty acid (FFA) receptors, thereby promoting the secretion of peptide hormones from the enteroendocrine cells [106, 107].

Since brain GLP-1R signaling is to a large extent directly triggered by its peripheral secretion from the intestines via vagal stimulation of the NTS neurons, it seems plausible that proper balance in gut microbiota abundance and diversity can influence action of this peptide in the central nervous system. In fact, there are reports which demonstrate that administration of both a probiotic microorganism strain and prebiotics influences GLP-1 release and signaling. In mice, treatment with a probiotic strain of *Bifidobacterium* elevated plasma levels of this hormone [108]. Similar results were also observed in humans. In a study involving healthy non-diabetic subjects, daily intake of a *Lactobacillus*

*reuteri* SD5865 strain for 8 weeks resulted in an increase of GLP-1 secretion in the intestines, which was accompanied by elevated plasma insulin and C-peptide levels [109]. In a clinical study involving patients with type 2 diabetes, an almond-based diet with a low-carbohydrate content, which had been previously shown to possess marked prebiotic properties [110, 111], resulted in augmentation of the number of SCFA-producing bacteria species, such as *Roseburia*, *Ruminococcus* and *Eubacterium*, which led to an increase in fasting blood GLP-1 levels and also promoted antidepressive effects after three months [112].

Many recent studies also demonstrate that GLP-1R agonists display protective effects on the gastrointestinal tract. Treatment with liraglutide was shown to modulate the diversity of the gut microbiota in experiments conducted on animals on a high-fat diet [113, 114]. Similar results were found in a clinical study in patients with T2DM, where administration of liraglutide, but not metformin, increased the relative abundance of *Akkermansia*, which is often associated with the improvement of gastric mucosa and also becomes severely depleted in diabetic patients [115]. Administration of exendin-4 ameliorated stress-induced defecation, decreased visceral pain sensitivity and increased the serum level of anti-inflammatory cytokine: interleukin-13 in the Wistar–Kyoto rat strain, which was considered a model for irritable bowel syndrome [116]. However, this particular rat strain is also widely regarded as a valid model of endogenous depression [117].

### Current clinical evidence for possible antidepressant effects of GLP-1R agonists

Depression is often comorbid with metabolic disorders such as T2DM and obesity and many antidiabetic drugs, which often display neuroprotective and immunomodulatory effect, have demonstrated antidepressant properties in clinical trials. However, in contrast to anti-hyperglycemic agents such as metformin, pioglitazone and peroxisome proliferator-activated receptor gamma (PPAR $\gamma$ ) agonists, which were particularly well studied in this matter, very few clinical studies concerning the effects of GLP-1R targeting therapeutics on alleviation of depressive symptoms in humans have been carried out so far [118, 119].

Recent systemic review and meta-analysis demonstrated, that treatment with functional agonists of GLP-1 which included both GLP-1RAs and DPP4 inhibitors resulted in a significant reduction of depression rating scores and tended to be superior over control treatments, which supports the hypothesis of their antidepressant action in humans. These results, however, must be taken into careful consideration, mainly because of a small number of analyzed clinical studies and high between-study heterogeneity [120].

The results of different clinical studies are so far inconclusive and they vary much, depending on experimental design, sample size, health conditions and the chosen rating scale used to assess depressive symptoms in participants. For example, in a prospective study aimed at investigating the influence of GLP-1RA and DPP4 inhibitors on the development of depression in patients with newly diagnosed T2DM, participants receiving incretin-based therapies displayed marked reduction of depressive symptoms after one year, when compared to the control group. These results furthermore correlated with the reduction of CRP levels, which may suggest that anti-inflammatory action may be an important mechanism of the antidepressant effect of incretin-based drugs [121]. In a small-scale four-week long, open-label study involving 14 individuals diagnosed with major depressive disorder and bipolar disorder, which also displayed impaired executive function, treatment with liraglutide significantly reduced Hamilton Depression Rating Scale (HDRS) scores and improved executive function, however, at the same time it did not improve cognitive function in patients [122]. Conversely, in a randomized controlled trial involving adults with T2DM, administration of liraglutide for 26 weeks in addition to standard therapy with insulin, although significantly decreased body weight and levels of glycated hemoglobin HbA1c in patients, but at the same time failed to reduce Beck's Depression Inventory (BDI) scores (de Witt 2014). There are also few studies concerning the safety of GLP-1RA implementation in neuropsychiatric diseases. In a pooled analysis of phase 2 and 3a clinical trials of liraglutide for weight management, when administered once daily at a dose of 3.0 mg caused no major concerns regarding its neuropsychiatric safety [123].

In summary, there is evidence, that treatment with GLP-1RAs may prove useful in the treatment of depressive disorders, however, the number of reliable clinical reports concerning this matter remains very low at this point. Therefore, further clinical studies are needed to verify whether therapies GLP-1 functional agonists could be used as supportive therapy to currently available antidepressant drugs or whether these compounds would have a beneficial effect in patients suffering from treatment-resistant depression [120].

## Concluding remarks

In this review, we have presented some premises surrounding the potential of GLP-1 receptor agonists for exerting antidepressant effects by outlining their impact on some key processes, which are known to be involved in the pathogenesis of this mental illness. First and foremost, GLP-1 mediated signaling in the brain has a well-established neuroprotective effect, which has been repeatedly proven to enhance memory and cognitive functions, improve neurogenesis

and synaptic functions, as well as restore balance in neurotransmission, i.e. processes that are severely impaired in depressed patients. The results of some of the studies we have discussed also seem to indicate that administration of GLP-1RAs may directly exert an antidepressant effect in experimental animals.

Moreover, taking into account numerous clinical studies and experimental data showing that the pathogenesis of depression is not limited to the brain, but may also result from an impaired cross-talk between the central nervous system and other systems in the body, particularly the immune, endocrine and digestive systems, therapeutic GLP-1 analogs such as exendin-4 or liraglutide can also normalize their functioning in many cases, thus preventing the occurrence of maladaptive brain changes associated with depressive symptoms. For example, GLP-1As frequently display immunomodulatory properties, which appears to be noteworthy, since chronic inflammatory processes in the brain are often associated with a depressive mood in patients. The clear influence of therapeutic GLP-1 analogs on the physiology of the digestive system as well as the stability and diversity of the gut microbiota deserves special attention because disorders of the gut-brain axis homeostasis also appear to be an important, although so far somewhat understudied factor, which may lead to the development of depression. Finally, since endogenous GLP-1 is involved in the regulation of energy metabolism both in the periphery as well as in the brain, compounds acting as GLP-1R agonists can also normalize mitochondrial function, which also appears to be repeatedly disrupted in the depressive brain and thus possibly exacerbate neuroprotective effects, e.g. by diminishing the damage caused by oxidative stress.

Although GLP-1RAs seem to have a beneficial influence in reversing many maladaptive brain changes relevant to depression, it should be remembered that at the same time, they are also known to mediate some unfavorable processes such as activation of the HPA axis and intensification of anxiety-like behavior in some animal studies. Even though this phenomenon has not been fully understood in the context of the possible exacerbation of pro-depressive changes by GLP-1RA administration, it certainly requires careful investigation before the potential introduction of these compounds to the clinic for the treatment of mood disorders in the future.

In summary, the GLP-1 receptor remains an interesting and noteworthy target for the pharmacotherapy of central nervous system diseases, not only those related to neurodegeneration and substance abuse, but GLP-1RA drugs may also prove effective as adjunctive therapies in the treatment of mood disorders such as depression. Moreover, due to the peripheral action of GLP-1, their use in depressed patients may also prevent the development of metabolic diseases, such as diabetes and obesity, which are often associated with a depressive disorder.



**Funding** This work was supported by Statutory Funds of the Laboratory of Immunoendocrinology, Maj Institute of Pharmacology, Cracow, Poland.

## Declarations

**Conflict of interest** The authors declare no conflict of interests.

**Open Access** This article is licensed under a Creative Commons Attribution 4.0 International License, which permits use, sharing, adaptation, distribution and reproduction in any medium or format, as long as you give appropriate credit to the original author(s) and the source, provide a link to the Creative Commons licence, and indicate if changes were made. The images or other third party material in this article are included in the article's Creative Commons licence, unless indicated otherwise in a credit line to the material. If material is not included in the article's Creative Commons licence and your intended use is not permitted by statutory regulation or exceeds the permitted use, you will need to obtain permission directly from the copyright holder. To view a copy of this licence, visit <http://creativecommons.org/licenses/by/4.0/>.

## References

- Wang PS, Aguilar-Gaxiola S, Alonso J, Angermeyer MC, Borges G, Bromet EJ, et al. Use of mental health services for anxiety, mood, and substance disorders in 17 countries in the WHO world mental health surveys. *Lancet*. 2007;370:841–50. [https://doi.org/10.1016/S0140-6736\(07\)61414-7](https://doi.org/10.1016/S0140-6736(07)61414-7).
- Belzung C. Innovative drugs to treat depression : did animal models fail to be predictive or did clinical trials fail to detect effects ? *Neuropsychopharmacology*. 2014;39:1041–51. <https://doi.org/10.1038/npp.2013.342>.
- Gold PW, Goodwin FK, Chrousos GP. Clinical and biochemical manifestations of depression Relation to the neurobiology of stress (2). *N Engl J Med*. 1988;319:413–20. <https://doi.org/10.1056/NEJM198808183190706>.
- Zunszain PA, Anacker C, Cattaneo A, Carvalho LA, Pariante CM. Glucocorticoids, cytokines and brain abnormalities in depression. *Prog Neuropsychopharmacol Biol Psychiatry*. 2011;35:722–9. <https://doi.org/10.1016/j.pnpbp.2010.04.011>.
- Malhi GS, Mann JJ. Depression. *Lancet*. 2018;392:2299–312. [https://doi.org/10.1016/S0140-6736\(18\)31948-2](https://doi.org/10.1016/S0140-6736(18)31948-2).
- Setoyama D, Kato TA, Hashimoto R, Kunugi H, Hattori K, Hayakawa K, et al. Plasma metabolites predict severity of depression and suicidal ideation in psychiatric patients—a multicenter pilot analysis. *PLoS ONE*. 2016;11:e0165267. <https://doi.org/10.1371/journal.pone.0165267>.
- Akimoto H, Tezuka K, Nishida Y, Nakayama T, Takahashi Y, Asai S. Association between use of oral hypoglycemic agents in Japanese patients with type 2 diabetes mellitus and risk of depression: a retrospective cohort study. *Pharmacol Res Perspect*. 2019;7:e00536. <https://doi.org/10.1002/prp2.536>.
- Bansal Y, Kuhad A. Mitochondrial dysfunction in depression. *Curr Neuropharmacol*. 2016;14:610–8. <https://doi.org/10.2174/1570159x14666160229114755>.
- Carlessi AS, Borba LA, Zugno AI, Quevedo J, Réus GZ. Gut microbiota-brain axis in depression: the role of neuroinflammation. *Eur J Neurosci*. 2021;53:222–35. <https://doi.org/10.1111/ejn.14631>.
- Semenkovich K, Brown ME, Svrakic DM, Lustman PJ. Depression in type 2 diabetes mellitus : prevalence, impact, and treatment. *Drugs*. 2015. <https://doi.org/10.1007/s40265-015-0347-4>.
- Milaneschi Y, Simmons WK, Van REFC, Wjh B. Depression and obesity : evidence of shared biological mechanisms. *Mol Psychiatry*. 2019. <https://doi.org/10.1038/s41380-018-0017-5>.
- Müller TD, Finan B, Bloom SR, Alessio DD, Drucker DJ, Flatt PR, et al. Glucagon-like peptide 1 (GLP-1). *Mol Metab*. 2019;30:72–130. <https://doi.org/10.1016/j.molmet.2019.09.010>.
- Nauck M. Incretin therapies: highlighting common features and differences in the modes of action of glucagon-like peptide-1 receptor agonists and dipeptidyl peptidase-4 inhibitors. *Diabetes Obes Metab*. 2016;18:203–16. <https://doi.org/10.1111/dom.12591>.
- Kelly AS, Auerbach P, Barrientos-Perez M, Gies I, Hale PM, Marcus C, et al. NN8022–4180 trial investigators. A randomized, controlled trial of liraglutide for adolescents with obesity. *N Engl J Med*. 2020;382:2117–28. <https://doi.org/10.1056/NEJMoa1916038>.
- Holt MK, Trapp S. The physiological role of the brain GLP-1 system in stress. *Cogent Biol*. 2016;311:1–9. <https://doi.org/10.1080/23312025.2016.1229086>.
- Diz-Chaves Y, Herrera-Pérez S, González-Matías LC, Lamas JA, Mallo F. Glucagon-like peptide-1 (GLP-1) in the integration of neural and endocrine responses to stress. *Nutrients*. 2020;12:3304. <https://doi.org/10.3390/nu12113304>.
- Hölscher C. Potential role of glucagon-like peptide-1 (GLP-1) in neuroprotection. *CNS Drugs*. 2012;26:871–82. <https://doi.org/10.2165/11635890-000000000-00000>.
- Batista AF, Bodart V, De FFG, Ferreira ST. Neuroprotective actions of glucagon-like peptide-1 (glp-1) analogues in alzheimer's and parkinson's diseases. *CNS Drugs*. 2019;33:209–23. <https://doi.org/10.1007/s40263-018-0593-6>.
- Camkurt MA, Lavagnino L, Zhang XY, Teixeira AL. Liraglutide for psychiatric disorders: clinical evidence and challenges. *Horm Mol Biol Clin Investig*. 2018. <https://doi.org/10.1515/hmbci-2018-0031>.
- Kim YK, Kim OY, Song J. Alleviation of Depression by glucagon-like peptide 1 Through the regulation of neuroinflammation, neurotransmitters, neurogenesis, and synaptic function. *Front Pharmacol*. 2020;11:1270. <https://doi.org/10.3389/fphar.2020.01270>.
- Holst JJ. The physiology of glucagon-like peptide 1. *Physiol Rev*. 2007;87:1409–39. <https://doi.org/10.1152/physrev.00034.2006>.
- Culhane KJ, Liu Y, Cai Y, Yan EC. Transmembrane signal transduction by peptide hormones via family B G protein-coupled receptors. *Front Pharmacol*. 2015;6:264. <https://doi.org/10.3389/fphar.2015.00264>.
- Zhang Y, Sun B, Feng D, Hu H, Chu M, Qu Q, et al. Cryo-EM structure of the activated GLP-1 receptor in complex with a G protein. *Nat Publ Gr*. 2017;546:248–53. <https://doi.org/10.1038/nature22394>.
- Drucker DJ, Philippe J, Mojsov S, Chick WL, Habener JF. Glucagon-like peptide I stimulates insulin gene expression and increases cyclic AMP levels in a rat islet cell line. *Proc Natl Acad Sci USA*. 1987;84:3434–8. <https://doi.org/10.1073/pnas.84.10.3434>.
- Smith NK, Hackett TA, Galli A, Flynn CR. GLP-1: Molecular mechanisms and outcomes of a complex signaling system. *Neurochem Int*. 2019;128:94–105. <https://doi.org/10.1016/j.neuint.2019.04.010>.
- Montrose-Rafizadeh C, Avdonin P, Garant MJ, Rodgers BD, Kole S, Yang H, et al. Pancreatic glucagon-like peptide-1 receptor couples to multiple G proteins and activates mitogen-activated protein kinase pathways in Chinese hamster ovary cells. *Endocrinology*. 1999;140:1132–40. <https://doi.org/10.1210/endo.140.3.6550>.
- Bullock BP, Heller RS, Habener JF. Tissue distribution of messenger ribonucleic acid encoding the rat glucagon-like peptide-1

- receptor. *Endocrinology*. 1996;137:2968–78. <https://doi.org/10.1210/endo.137.7.8770921>.
28. Pyke C, Heller RS, Kirk RK, Ørskov C, Reedtz-Runge S, Kaasstrup P, et al. GLP-1 receptor localization in monkey and human tissue: novel distribution revealed with extensively validated monoclonal antibody. *Endocrinology*. 2014;155:1280–90. <https://doi.org/10.1210/en.2013-1934>.
  29. Heppner KM, Kirigiti M, Secher A, Paulsen SJ, Buckingham R, Pyke C, et al. Expression and distribution of glucagon-like peptide-1 receptor mRNA, protein and binding in the male nonhuman primate (*Macaca mulatta*) brain. *Endocrinology*. 2015;156:255–67. <https://doi.org/10.1210/en.2014-1675>.
  30. Bucinskaite V, Tolessa T, Pedersen J, Rydqvist B, Zerihun L, Holst JJ, et al. Receptor-mediated activation of gastric vagal afferents by glucagon-like peptide-1 in the rat. *Neurogastroenterol Motil*. 2009;21:978–e78. <https://doi.org/10.1111/j.1365-2982.2009.01317.x>.
  31. Kanoski SE, Hayes MR, Skibicka KP. GLP-1 and weight loss: unraveling the diverse neural circuitry. *Am J Physiol Regul Integr Comp Physiol*. 2016;310:R885–95. <https://doi.org/10.1152/ajpregu.00520.2015>.
  32. Cork SC, Richards JE, Holt MK, Gribble FM, Reimann F, Trapp S. Distribution and characterisation of Glucagon-like peptide-1 receptor expressing cells in the mouse brain. *Mol Metab*. 2015;4:718–31. <https://doi.org/10.1016/j.molmet.2015.07.008>.
  33. Larsen PJ, Holst JJ. Glucagon-related peptide 1 (GLP-1): hormone and neurotransmitter. *Regul Pept*. 2005;128:97–107. <https://doi.org/10.1016/j.regpep.2004.08.026>.
  34. Hayes MR, Schmidt HD. GLP-1 influences food and drug reward. *Curr Opin Behav Sci*. 2016;9:66–70. <https://doi.org/10.1016/j.cobeha.2016.02.005>.
  35. Hernandez NS, Weir VR, Ragnini K, Merkel R, Zhang Y, Mace K, et al. GLP-1 receptor signaling in the laterodorsal tegmental nucleus attenuates cocaine seeking by activating GABAergic circuits that project to the VTA. *Mol Psychiatry*. 2020. <https://doi.org/10.1038/s41380-020-00957-3>.
  36. Thomsen M, Holst JJ, Molander A, Linnet K, Ptito M, Fink-Jensen A. Effects of glucagon-like peptide 1 analogs on alcohol intake in alcohol-preferring vervet monkeys. *Psychopharmacology*. 2019;236:603–11. <https://doi.org/10.1007/s00213-018-5089-z>.
  37. Hernandez NS, Schmidt HD. Physiology & Behavior Central GLP-1 receptors : novel molecular targets for cocaine use disorder. *Physiol Behav*. 2019;206:93–105. <https://doi.org/10.1016/j.physbeh.2019.03.026>.
  38. Eng J, Kleinman WA, Singh L, Singh G, Raufman JP. Isolation and characterization of exendin-4, an exendin-3 analogue, from *Heloderma suspectum* venom. Further evidence for an exendin receptor on dispersed acini from guinea pig pancreas. *J Biol Chem*. 1992;267:7402–5 (PMID: 1313797).
  39. Kastin AJ, Akerstrom V. Entry of exendin-4 into brain is rapid but may be limited at high doses. *Int J Obes Relat Metab Disord*. 2003;27:313–8. <https://doi.org/10.1038/sj.ijo.0802206>.
  40. Hunter K, Hölscher C. Drugs developed to treat diabetes, liraglutide and lixisenatide, cross the blood brain barrier and enhance neurogenesis. *BMC Neurosci*. 2012;13:33. <https://doi.org/10.1186/1471-2202-13-33>.
  41. Christensen M, Sparre-Ulrich AH, Hartmann B, Grevstad U, Rosenkilde MM, Holst JJ, et al. Transfer of liraglutide from blood to cerebrospinal fluid is minimal in patients with type 2 diabetes. *Int J Obes (Lond)*. 2015;39:1651–4. <https://doi.org/10.1038/ijo.2015.136>.
  42. Gabery S, Salinas CG, Paulsen SJ, Ahnfelt-Rønne J, Alanentalo T, Baquero AF, et al. Semaglutide lowers body weight in rodents via distributed neural pathways. *JCI Insight*. 2020;5:e133429. <https://doi.org/10.1172/jci.insight.133429>.
  43. Serafini G. Neuroplasticity and major depression, the role of modern antidepressant drugs. *World J Psychiatry*. 2012;2:49–57. <https://doi.org/10.5498/wjp.v2.i3.49>.
  44. Liu W, Ge T, Leng Y, Pan Z, Fan J, Yang W, Cui R. The role of neural plasticity in depression: from hippocampus to prefrontal cortex. *Neural Plast*. 2017;2017:6871089. <https://doi.org/10.1155/2017/6871089>.
  45. During MJ, Cao L, Zuzga DS, Francis JS, Fitzsimons HL, Jiao X, et al. Glucagon-like peptide-1 receptor is involved in learning and neuroprotection. *Nat Med*. 2003;9:1173–9. <https://doi.org/10.1038/nm919>.
  46. Liu W, Liu J, Huang Z, Cui Z, Li L, Liu W, et al. Possible role of GLP-1 in antidepressant effects of metformin and exercise in CUMS mice. *J Affect Disord*. 2019;246:486–97. <https://doi.org/10.1016/j.jad.2018.12.112>.
  47. Zemdeg J, Martin H, Pintana H, Bullich S, Manta S, Marqués MA, et al. Metformin promotes anxiolytic and antidepressant-like responses in insulin-resistant mice by decreasing circulating branched-chain amino acids. *J Neurosci*. 2019;39:5935–48. <https://doi.org/10.1523/JNEUROSCI.2904-18.2019>.
  48. Nguyen T, Gong M, Wen S, Yuan X, Wang C, Jin J, et al. The Mechanism of metabolic influences on the endogenous GLP-1 by oral antidiabetic medications in type 2 diabetes mellitus. *J Diabetes Res*. 2020;16:4727390. <https://doi.org/10.1155/2020/4727390>.
  49. Weina H, Yuhu N, Christian H, Birong L, Feiyu S, Le W. Liraglutide attenuates the depressive- and anxiety-like behaviour in the corticosterone induced depression model via improving hippocampal neural plasticity. *Brain Res*. 2018;1694:55–62. <https://doi.org/10.1016/j.brainres.2018.04.031>.
  50. Trammell TS, Henderson NL, Madkour HS, Stanwood GD, Graham DL. GLP-1R activation alters performance in cognitive tasks in a sex-dependent manner. *Neurosci*. 2020. <https://doi.org/10.1007/s10072-020-04910-8>.
  51. Duman RS. Role of neurotrophic factors in the etiology and treatment of mood disorders. *Neuromolecular Med*. 2004;5:11–25. <https://doi.org/10.1385/NMM:5:1:011>.
  52. Dwivedi Y, Rizavi HS, Conley RR, Roberts RC, Tamminga CA, Pandey GN. Altered gene expression of brain-derived neurotrophic factor and receptor tyrosine kinase B in postmortem brain of suicide subjects. *Arch Gen Psychiatry*. 2003;60:804–15. <https://doi.org/10.1001/archpsyc.60.8.804>.
  53. Ji C, Xue GF, Lijun C, Feng P, Li D, Li L, Li G, Hölscher C. A novel dual GLP-1 and GIP receptor agonist is neuroprotective in the MPTP mouse model of Parkinson's disease by increasing expression of BDNF. *Brain Res*. 2016;1634:1–11. <https://doi.org/10.1016/j.brainres.2015.09.035>.
  54. Gomes A, Souza D, José A, Chaves M, Victor J, Oliveira S, et al. Biomedicine & pharmacotherapy prevention of pentylenetetrazole-induced kindling and behavioral comorbidities in mice by levetiracetam combined with the GLP-1 agonist liraglutide : involvement of brain antioxidant and BDNF upregulating properties. *Biomed Pharmacother*. 2019;109:429–39. <https://doi.org/10.1016/j.biopha.2018.10.066>.
  55. Liu Y, Zhao J, Guo W. Emotional roles of mono-aminergic neurotransmitters in major depressive disorder and anxiety disorders. *Front Psychol*. 2018;9:2201. <https://doi.org/10.3389/fpsyg.2018.02201>.
  56. Owji AA, Khoshdel Z, Sanea F, Panjehshahin MR, Shojaaee Fard M, Smith DM, et al. Effects of intracerebroventricular injection of glucagon like peptide-1 and its related peptides on serotonin metabolism and on levels of amino acids in the rat hypothalamus. *Brain Res*. 2002;929:70–5. [https://doi.org/10.1016/s0006-8993\(01\)03379-0](https://doi.org/10.1016/s0006-8993(01)03379-0).

57. Korol SV, Jin Z, Babateen O, Birnir B. GLP-1 and exendin-4 transiently enhance GABAA receptor-mediated synaptic and tonic currents in rat hippocampal CA3 pyramidal neurons. *Diabetes*. 2015;64:79–89. <https://doi.org/10.2337/db14-0668>.
58. Gault V, Porter W, Flatt P, et al. Actions of exendin-4 therapy on cognitive function and hippocampal synaptic plasticity in mice fed a high-fat diet. *Int J Obes*. 2010;34:1341–4. <https://doi.org/10.1038/ijo.2010.59>.
59. Maes M, Yirmiya R, Noraberg J, Brene S, Hibbeln J, Perini G, et al. The inflammatory & neurodegenerative (I&ND) hypothesis of depression: leads for future research and new drug developments in depression. *Metab Brain Dis*. 2009;24:27–53. <https://doi.org/10.1007/s11011-008-9118-1>.
60. Kopschina Feltes P, Doorduyn J, Klein HC, Juárez-Orozco LE, Dierckx RA, Moriguchi-Jeckel CM, et al. Anti-inflammatory treatment for major depressive disorder: implications for patients with an elevated immune profile and non-responders to standard antidepressant therapy. *J Psychopharmacol*. 2017;31:1149–65. <https://doi.org/10.1177/0269881117711708>.
61. Troubat R, Barone P, Leman S, Desmidt T, Cressant A, Atanasova B, et al. Neuroinflammation and depression: a review. *Eur J Neurosci*. 2021;53:151–71. <https://doi.org/10.1111/ejn.14720>.
62. Velmurugan K, Balamurugan AN, Loganathan G, Ahmad A, Hering BJ, Pugazhenth S. Antiapoptotic actions of exendin-4 against hypoxia and cytokines are augmented by CREB. *Endocrinology*. 2012;153:1116–28. <https://doi.org/10.1210/en.2011-1895>.
63. Yoon G, Kim Y, Song J. Glucagon-like peptide-1 suppresses neuroinflammation and improves neural structure. *Pharmacol Res*. 2020;152:104615. <https://doi.org/10.1016/j.phrs.2019.104615>.
64. Shan Y, Tan S, Lin Y, Liao S, Zhang B, Chen X, et al. The glucagon-like peptide-1 receptor agonist reduces inflammation and blood-brain barrier breakdown in an astrocyte-dependent manner in experimental stroke. *J Neuroinflammation*. 2019;16:242. <https://doi.org/10.1186/s12974-019-1638-6>.
65. Dudek KA, Dion-Albert L, Lebel M, LeClair K, Labrecque S, Tuck E, et al. Molecular adaptations of the blood-brain barrier promote stress resilience vs depression. *Proc Natl Acad Sci USA*. 2020;117:3326–36. <https://doi.org/10.1073/pnas.1914655117>.
66. McClean PL, Parthasarathy V, Faivre E, Hölscher C. The diabetes drug liraglutide prevents degenerative processes in a mouse model of Alzheimer's disease. *J Neurosci*. 2011;31:6587–94. <https://doi.org/10.1523/JNEUROSCI.0529-11.2011>.
67. Ventorp F, Bay-Richter C, Nagendra AS, Janelidze S, Matsson VS, Lipton J, et al. Exendin-4 Treatment Improves LPS-Induced Depressive-Like Behavior Without Affecting Pro-Inflammatory Cytokines. *J Parkinsons Dis*. 2017;7:263–73. <https://doi.org/10.3233/JPD-171068>.
68. Szymańska M, Budziszewska B, Jaworska-Feil L, Basta-Kaim A, Kubera M, Leśkiewicz M, Regulska M, Lason W. The effect of antidepressant drugs on the HPA axis activity, glucocorticoid receptor level and FKBP51 concentration in prenatally stressed rats. *Psychoneuroendocrinology*. 2009;34:822–32. <https://doi.org/10.1016/j.psyneuen.2008.12.012>.
69. Juruena MF. Early-life stress and HPA axis trigger recurrent adulthood depression. *Epilepsy Behav*. 2014;38:148–59. <https://doi.org/10.1016/j.yebbeh.2013.10.020>.
70. Budziszewska B. Effect of antidepressant drugs on the hypothalamic-pituitary-adrenal axis activity and glucocorticoid receptor function. *Pol J Pharmacol*. 2002;54:343–9 (PMID: 12523487).
71. Oyola MG, Handa RJ. Hypothalamic-pituitary-adrenal and hypothalamic-pituitary-gonadal axes: sex differences in regulation of stress responsivity. *Stress*. 2017;20:476–94. <https://doi.org/10.1080/10253890.2017.1369523>.
72. Sarkar S, Fekete C, Légrádi GÁ, Lechan RM. Glucagon like peptide-1 (7–36) amide (GLP-1) nerve terminals densely innervate corticotropin-releasing hormone neurons in the hypothalamic paraventricular nucleus. *Brain Res*. 2003;985:163–8. [https://doi.org/10.1016/S0006-8993\(03\)03117-2](https://doi.org/10.1016/S0006-8993(03)03117-2).
73. Kageyama K, Yamagata S, Akimoto K, Sugiyama A, Mura-sawa S, Suda T. Action of glucagon-like peptide 1 and glucose levels on corticotropin-releasing factor and vasopressin gene expression in rat hypothalamic 4B cells. *Mol Cell Endocrinol*. 2012;362:221–6. <https://doi.org/10.1016/j.mce.2012.06.023>.
74. Katsurada K, Maejima Y, Nakata M, Kodaira M, Suyama S. Biochemical and Biophysical Research Communications Endogenous GLP-1 acts on paraventricular nucleus to suppress feeding : Projection from nucleus tractus solitarius and activation of corticotropin-releasing hormone, nesfatin-1 and oxytocin neurons. *Biochem Biophys Res Commun*. 2014;451:276–81. <https://doi.org/10.1016/j.bbrc.2014.07.116>.
75. Kinzig KP, Hargrave SL, Honors MA. Binge-type eating attenuates corticosterone and hypophagic responses to restraint stress. *Physiol Behav*. 2008;95:108–13. <https://doi.org/10.1016/j.physbeh.2008.04.026>.
76. Gil-Lozano M, Pérez-Tilve D, Alvarez-Crespo M, Martí A, Fernandez AM, Catalina PAF, et al. GLP-1(7–36)-amide and exendin-4 stimulate the HPA axis in rodents and humans. *Endocrinology*. 2010;151:2629–40. <https://doi.org/10.1210/en.2009-0915>.
77. Gil-Lozano M, Romani-Pérez M, Outeiriño-Iglesias V, Vigo E, González-Matías LC, Brubaker PL, et al. Corticotropin-releasing hormone and the sympathoadrenal system are major mediators in the effects of peripherally administered exendin-4 on the hypothalamic-pituitary-adrenal axis of male rats. *Endocrinology*. 2014;155:2511–23. <https://doi.org/10.1210/en.2013-1718>.
78. Winzeler B, da Conceição I, Refardt J, Sailer CO, Dutilh G, Christ-Crain M. Effects of glucagon-like peptide-1 receptor agonists on hypothalamic-pituitary-adrenal axis in healthy volunteers. *J Clin Endocrinol Metab*. 2019;104:202–8. <https://doi.org/10.1210/je.2018-01420>.
79. Mansur RB, Lee Y, Subramaniapillai M, Brietzke E, McIntyre RS. Neuropsychopharmacology Cognitive dysfunction and metabolic comorbidities in mood disorders : A repurposing opportunity for glucagon-like peptide 1 receptor agonists ? *Neuropharmacology*. 2018;136:335–42. <https://doi.org/10.1016/j.neuropharm.2018.01.048>.
80. Sato T, Hayashi H, Hiratsuka M, Hirasawa N. Glucocorticoids decrease the production of glucagon-like peptide-1 at the transcriptional level in intestinal L-cells. *Mol Cell Endocrinol*. 2015;460:1–8. <https://doi.org/10.1016/j.mce.2015.02.014>.
81. Kappe C, Fransson L, Wolbert P, Ortsäter H. Glucocorticoids suppress GLP-1 secretion: possible contribution to their diabetogenic effects. *Clin Sci (Lond)*. 2015;129:405–14. <https://doi.org/10.1042/CS20140719>.
82. Zhang R, Packard BA, Tauchi M, D'Alessio DA, Herman JP. Glucocorticoid regulation of preproglucagon transcription and RNA stability during stress. *Proc Natl Acad Sci USA*. 2009;106:5913–8. <https://doi.org/10.1073/pnas.0808716106>.
83. Detka J, Slusarczyk J, Kurek A, Kucharczyk M, Adamus T, et al. Hypothalamic insulin and glucagon-like peptide-1 levels in an animal model of depression and their effect on corticotropin-releasing hormone promoter gene activity in a hypothalamic cell line. *Pharm Rep*. 2019;71:338–46. <https://doi.org/10.1016/j.pharep.2018.11.001>.
84. Głombik K, Detka J, Góral J, et al. Brain Metabolic Alterations in Rats Showing Depression-Like and Obesity Phenotypes. *Neurotox Res*. 2020;37:406–24. <https://doi.org/10.1007/s12640-019-00131-w>.
85. Gaspersz R, Nawijn L, Lamers F, Penninx BWJH. Patients with anxious depression: overview of prevalence, pathophysiology

- and impact on course and treatment outcome. *Curr Opin Psychiatry*. 2018;31:17–25. <https://doi.org/10.1097/YCO.00000000000000376>.
86. Anderberg RH, Richard JE, Hansson C, Nissbrandt H, Bergquist F, Skibicka KP. Psychoneuroendocrinology GLP-1 is both anxiogenic and antidepressant; divergent effects of acute and chronic GLP-1 on emotionality. *Psychoneuroendocrinology*. 2016;65:54–66. <https://doi.org/10.1016/j.psyneuen.2015.11.021>.
  87. López-Ferreras L, Eerola K, Shevchouk OT, Richard JE, Nilsson FH, Jansson LE, et al. Psychoneuroendocrinology the supramammillary nucleus controls anxiety-like behavior; key role of GLP-1R. *Psychoneuroendocrinology*. 2020;119:104720. <https://doi.org/10.1016/j.psyneuen.2020.104720>.
  88. Allen J, Romay-Tallon R, Brymer KJ, Caruncho HJ, Kalynchuk LE. Mitochondria and mood: mitochondrial dysfunction as a key player in the manifestation of depression. *Front Neurosci*. 2018;12:386. <https://doi.org/10.3389/fnins.2018.00386>.
  89. Marazziti D, Baroni S, Picchetti M, Landi P, Silvestri S, Vatteroni E, Catena DM. Mitochondrial alterations and neuropsychiatric disorders. *Curr Med Chem*. 2011;18:4715–21. <https://doi.org/10.2174/0929867111797379221>.
  90. Katsurada K, Yada T. Neural effects of gut- and brain-derived glucagon-like peptide-1 and its receptor agonist. *J Diabetes Investig*. 2016;7(Suppl 1):64–9. <https://doi.org/10.1111/jdi.12464>.
  91. Detka J, Kurek A, Kucharczyk M, Głombik K, Basta-Kaim A, Kubera M, et al. Brain glucose metabolism in an animal model of depression. *Neuroscience*. 2015;295:198–208. <https://doi.org/10.1016/j.neuroscience.2015.03.046>.
  92. Głombik K, Detka J, Kurek A, Budziszewska B. Impaired brain energy metabolism: involvement in depression and hypothyroidism. *Front Neurosci*. 2020;14:586939. <https://doi.org/10.3389/fnins.2020.586939> (PMID:33343282).
  93. Wang R, Xue G, Hölscher C, Tian M, Feng P. Post-treatment with the GLP-1 analogue liraglutide alleviate chronic inflammation and mitochondrial stress induced by Status epilepticus. *Epilepsy Res*. 2018;142:45–52. <https://doi.org/10.1016/j.eplepsyres.2018.03.009>.
  94. He W, Wang H, Zhao C, Tian X, Li L, Wang H. Role of liraglutide in brain repair promotion through Sirt1-mediated mitochondrial improvement in stroke. *J Cell Physiol*. 2020;235:2986–3001. <https://doi.org/10.1002/jcp.29204>.
  95. García-Cáceres C, Quarta C, Varela L, Gao Y, Gruber T, Legutko B, et al. Astrocytic insulin signaling couples brain glucose uptake with nutrient availability. *Cell*. 2016;166:867–80. <https://doi.org/10.1016/j.cell.2016.07.028>.
  96. Vicente-Gutierrez C, Bonora N, Bobo-Jimenez V, Jimenez-Blasco D, Lopez-Fabuel I, Fernandez E, et al. Astrocytic mitochondrial ROS modulate brain metabolism and mouse behaviour. *Nat Metab*. 2019;1:201–11. <https://doi.org/10.1038/s42255-018-0031-6>.
  97. Timper K, Del Río-Martín A, Cremer AL, Bremser S, Alber J, Giavalisco P, et al. GLP-1 Receptor signaling in astrocytes regulates fatty acid oxidation, mitochondrial integrity, and function. *Cell Metab*. 2020;31(1189–1205):e13. <https://doi.org/10.1016/j.cmet.2020.05.001>.
  98. Dockray GJ. Gastrointestinal hormones and the dialogue between gut and brain. *J Physiol*. 2014;592:2927–41. <https://doi.org/10.1113/jphysiol.2014.270850>.
  99. Kelly JR, Borre Y, Brien CO, Patterson E, Aidy S, Kennedy PJ, et al. Transferring the blues: Depression-associated gut microbiota induces neurobehavioural changes in the rat. *J Psychiatr Res*. 2016. <https://doi.org/10.1016/j.jpsychires.2016.07.019>.
  100. Winter G, Hart RA, Charlesworth RPG, Sharpley CF. Gut microbiome and depression: what we know and what we need to know. *Rev Neurosci*. 2018;29:629–43. <https://doi.org/10.1515/revneuro-2017-0072>.
  101. Zheng P, Zeng B, Zhou C, Liu M, Fang Z, Xu X, et al. Gut microbiome remodeling induces depressive-like behaviors through a pathway mediated by the host's metabolism. *Mol Psychiatry*. 2016;21:786–96. <https://doi.org/10.1038/mp.2016.44>.
  102. Galley JD, Nelson MC, Yu Z, et al. Exposure to a social stressor disrupts the community structure of the colonic mucosa-associated microbiota. *BMC Microbiol*. 2014;14:189. <https://doi.org/10.1186/1471-2180-14-189>.
  103. Aoki-Yoshida A, Aoki R, Moriya N, Goto T, Kubota Y, Toyoda A, et al. Omics studies of the murine intestinal ecosystem exposed to subchronic and mild social defeat stress. *J Proteome Res*. 2016;15(9):3126–38. <https://doi.org/10.1021/acs.jproteome.6b00262>.
  104. McGovern AS, Hamlin AS, Winter G. A review of the antimicrobial side of antidepressants and its putative implications on the gut microbiome. *Aust N Z J Psychiatr*. 2019;53:1151–66. <https://doi.org/10.1177/0004867419877954>.
  105. Honda K, Littman DR. The microbiota in adaptive immune homeostasis and disease. *Nature*. 2016;535:75–84. <https://doi.org/10.1038/nature18848> (PMID: 27383982).
  106. Lach G, Schellekens H, Dinan TG, Cryan JF. Anxiety, depression, and the microbiome: a role for gut peptides. *Neurotherapeutics*. 2018;15:36–59. <https://doi.org/10.1007/s13311-017-0585-0>.
  107. Müller M, Hernández MAG, Goossens GH, Reijnders D, Holst JJ, Jocken JWE, et al. Circulating but not faecal short-chain fatty acids are related to insulin sensitivity, lipolysis and GLP-1 concentrations in humans. *Sci Rep*. 2019;9:12515. <https://doi.org/10.1038/s41598-019-48775-0>.
  108. Aoki R, Kamikado K, Suda W, Takii H, Mikami Y, Suganuma N, et al. A proliferative probiotic Bifidobacterium strain in the gut ameliorates progression of metabolic disorders via microbiota modulation and acetate elevation. *Sci Rep*. 2017;7:43522. <https://doi.org/10.1038/srep43522>.
  109. Simon MC, Strassburger K, Nowotny B, Kolb H, Nowotny P, Burkart V, et al. Intake of *Lactobacillus reuteri* improves incretin and insulin secretion in glucose-tolerant humans: a proof of concept. *Diabetes Care*. 2015;38:1827–34. <https://doi.org/10.2337/dc14-2690>.
  110. Mandalari G, Nueno-Palop C, Bisignano G, Wickham MS, Narbad A. Potential prebiotic properties of almond (*Amygdalus communis* L.) seeds. *Appl Environ Microbiol*. 2008;74:4264–70. <https://doi.org/10.1128/AEM.00739-08>.
  111. Wang LL, Wang Q, Hong Y, Ojo O, Jiang Q, Hou YY, et al. The effect of low-carbohydrate diet on glycemic control in patients with type 2 diabetes mellitus. *Nutrients*. 2018;10:661. <https://doi.org/10.3390/nu10060661>.
  112. Ren M, Zhang H, Qi J, Hu A, Jiang Q, Hou Y, et al. An almond-based low carbohydrate diet improves depression and glycometabolism in patients with type 2 diabetes through modulating gut microbiota and glp-1: a randomized controlled trial. *Nutrients*. 2020;12:3036. <https://doi.org/10.3390/nu12103036>.
  113. Moreira GV, Azevedo FF, Ribeiro LM, Santos A, Guadagnini D, Gama P, et al. Liraglutide modulates gut microbiota and reduces NAFLD in obese mice. *J Nutr Biochem*. 2018;62:143–54. <https://doi.org/10.1016/j.jnutbio.2018.07.009>.
  114. Zhang N, Tao J, Gao L, Bi Y, Li P, Wang H, et al. Liraglutide attenuates nonalcoholic fatty liver disease by modulating gut microbiota in rats administered a high-fat diet. *Biomed Res Int*. 2020;2020:2947549. <https://doi.org/10.1155/2020/2947549>.
  115. Wang Z, Saha S, Van Horn S, Thomas E, Traini C, Sathe G, et al. Gut microbiome differences between metformin- and liraglutide-treated T2DM subjects. *Endocrinol Diab Metab*. 2017;1:e00009. <https://doi.org/10.1002/edm2.9>.

116. O'Brien R, O'Malley D. The Glucagon-like peptide-1 receptor agonist, exendin-4, ameliorated gastrointestinal dysfunction in the Wistar Kyoto rat model of Irritable Bowel Syndrome. *Neurogastroenterol Motil.* 2020;32:e13738. <https://doi.org/10.1111/nmo.13738>.
117. Millard SJ, Weston-Green K, Newell KA. The Wistar-Kyoto rat model of endogenous depression: a tool for exploring treatment resistance with an urgent need to focus on sex differences. *Prog Neuropsychopharmacol Biol Psychiatr.* 2020;101:109908. <https://doi.org/10.1016/j.pnpbp.2020.109908>.
118. Moulton CD, Hopkins CWP, Ismail K, Stahl D. Psychoneuroendocrinology repositioning of diabetes treatments for depressive symptoms : a systematic review and meta-analysis of clinical trials. *Psychoneuroendocrinology.* 2018;94:91–103. <https://doi.org/10.1016/j.psyneuen.2018.05.010>.
119. Woo YS, Lim HK, Wang SM, Bahk WM. Clinical evidence of antidepressant effects of insulin and anti-hyperglycemic agents and implications for the pathophysiology of depression—a literature review. *Int J Mol Sci.* 2020;21:6969. <https://doi.org/10.3390/ijms21186969>.
120. Pozzi M, Mazhar F, Peeters GGAM, Vantaggiato C, Nobile M, Clementi E, et al. A systematic review of the antidepressant effects of glucagon-like peptide 1 ( GLP-1 ) functional agonists: Further link between metabolism and psychopathology Special Section on “Translational and Neuroscience Studies in Affective Disorders”. Section Editor, Maria Nobile MD, PhD. This Section of JAD focuses on the relevance of translational and neuroscience studies in providing a better understanding of the neural basis of affective disorders. The main aim is to briefly summaries relevant research findings in clinical neuroscience with particular regards to specific innovative topics in mood and anxiety disorders. *J Affect Disord.* 2019;257:774–8. <https://doi.org/10.1016/j.jad.2019.05.044>.
121. Moulton CD, Pickup JC, Amiel SA, Winkley K, Ismail K. Investigating incretin-based therapies as a novel treatment for depression in type 2 diabetes: Findings from the South London Diabetes (SOUL-D) Study. *Prim Care Diabetes.* 2016;10:156–9. <https://doi.org/10.1016/j.pcd.2015.06.003>.
122. Mansur RB, Zugman A, Ahmed J, Cha DS, Subramaniapillai M, Lee Y, et al. Treatment with a GLP-1R agonist over four weeks promotes weight loss-moderated changes in frontal-striatal brain structures in individuals with mood disorders. *Eur Neuropsychopharmacol.* 2017;27:1153–62. <https://doi.org/10.1016/j.euroeuro.2017.08.433>.
123. O'Neil PM, Aroda VR, Astrup A, Kushner R, Lau DCW, Wadden TA, et al. Satiety and clinical adiposity-liraglutide evidence in individuals with and without diabetes (scale) study groups. Neuropsychiatric safety with liraglutide 30 mg for weight management: results from randomized controlled phase 2 and 3a trials. *Diabetes Obes Metab.* 2017;19:1529–36. <https://doi.org/10.1111/dom.12963>.

## Authors and Affiliations

Jan Detka<sup>1</sup>  · Katarzyna Głombik<sup>1</sup>

<sup>1</sup> Laboratory of Immunoendocrinology, Department of Experimental Neuroendocrinology, Polish Academy of Sciences, Maj Institute of Pharmacology, 12 Smętna Street, 31-343 Cracow, Poland