



Genome-Wide SNP Discovery and Population Genetic Analysis of *Mesocentrotus nudus* in China Seas

Quanchao Wang^{1,2}, Ying Liu^{1,3}, Lang Yan¹, Linlin Chen^{1,2} and Baoquan Li^{1,2*}

¹ Key Laboratory of Coastal Biology and Bioresource Utilization, Yantai Institute of Coastal Zone Research, Chinese Academy of Sciences, Yantai, China, ² Center for Ocean Mega-Science, Chinese Academy of Sciences, Qingdao, China, ³ University of Chinese Academy of Sciences, Beijing, China

OPEN ACCESS

Edited by:

Qiang Lin,
South China Sea Institute
of Oceanology, Chinese Academy
of Sciences, China

Reviewed by:

Tainã Figueiredo Cardoso,
Brazilian Agricultural Research
Corporation (EMBRAPA), Brazil
Zhiyi Bai,
Shanghai Ocean University, China

*Correspondence:

Baoquan Li
bqli@yic.ac.cn

Specialty section:

This article was submitted to
Livestock Genomics,
a section of the journal
Frontiers in Genetics

Received: 31 May 2021

Accepted: 26 July 2021

Published: 19 August 2021

Citation:

Wang Q, Liu Y, Yan L, Chen L and
Li B (2021) Genome-Wide SNP
Discovery and Population Genetic
Analysis of *Mesocentrotus nudus*
in China Seas.
Front. Genet. 12:717764.
doi: 10.3389/fgene.2021.717764

Mesocentrotus nudus is an important commercially aquatic species because of its high edible and medicinal values. However, wild stocks have dramatically decreased in recent decades. Understanding the population structure and genetic diversity can provide vital information for genetic conservation and improvement. In the present study, the genotyping-by-sequencing (GBS) approach was adopted to identify the genome-wide single-nucleotide polymorphisms (SNPs) from a collection of 80 individuals consisting of five geographical populations (16 individuals from each population), covering the natural habitats of *M. nudus* in China seas. An average of 0.96-Gb clean reads per sample were sequenced, and a total of 51,738 biallelic SNPs were identified. Based on these SNPs, diversity index analysis showed that all populations have a similar pattern with positive F_{IS} (0.136) and low N_e (724.3). Low genetic differentiation and high genetic connectivity among five geographical populations were detected by pairwise F_{ST} , principal component analysis (PCA), admixture, and phylogenetic analysis. Besides, two YWL individuals originating from an isolated ancestor may imply that there is a genetically differentiated population in the adjacent sea. Overall, the results showed that GBS is an effective method to detect genome-wide SNPs for *M. nudus* and suggested that the protective measures and the investigation with larger spatial scale and sample size for *M. nudus* should be carried out in the future.

Keywords: *Mesocentrotus nudus*, single-nucleotide polymorphism discovery, genetic diversity, population structure, China seas

INTRODUCTION

Sea urchin is an ancient group of marine invertebrates that belongs to the class of Echinoidea under phylum of Echinodermata. To date, about 850 species of sea urchins have been found worldwide (Harris and Eddy, 2015). *Mesocentrotus nudus*, a member of the family Strongylocentrotidae, inhabits the intertidal and subtidal rocky sea bottoms along the coast of northwestern Pacific (Agatsuma, 2020). *M. nudus* is a well-known edible sea urchin for its good taste and redundant nutrition of vitamins and unsaturated fatty acids in the gonad (Mi et al., 2014). Furthermore, sea urchin extracts have extensive biological effects, such as anticancer, antioxidant, antileukemia, anti-fatigue, and anti-inflammatory effects (Liu et al., 2007).

The high edible and medicinal values of *M. nudus* have greatly stimulated the consumption demand, which has led to serious overfishing of wild sea urchins (Andrew et al., 2002; Li and Qi, 2008). In addition, the natural habitat of *M. nudus*, mostly adjacent to the densely populated areas (Adachi et al., 2020), has also been heavily disturbed by human activities including land-sourced pollution, aquaculture pollution, and sea reclamation (Lukyanova et al., 2017; Song and Duan, 2019). Under the influence of overfishing and natural habitat loss, the wild population resources of *M. nudus* are declining rapidly in recent years (Andrew et al., 2002). Especially in China, *M. nudus* has been considered as an endangered species. Although the breeding of *M. nudus* has been implemented to solve the shortage problem of natural resource in China since the 1980s (Ding et al., 2007), the parents of the seedlings were mainly from the wild populations. Therefore, understanding the genetic attributes of wild populations of *M. nudus* not only provide basic information for resources assessment and management and but also can lay a foundation for germplasm improvement.

Molecular markers have become the preferred tools for population genetic analysis. However, previously, quite limited genetic information on molecular markers (e.g., AFLP, mtDNA, and SSR) for *M. nudus* were available; and the level and pattern of population genetic diversity and structure are still poorly understood (Zhang et al., 2012). Recently, advances in next-generation sequencing (NGS) have greatly reduced the cost of nucleotide sequencing and made the genetic marker discovery more convenient. Genotyping-by-sequencing (GBS) as a genomic approach can explore the data covering the whole genome range with reduced cost and also provide more high-resolution genetic information for species lacking genomic information (Elshire et al., 2011). So far, GBS has been widely applied to assess genetic diversity on marine organisms, e.g., *Ostrea lurida* (Silliman, 2019), *Sillago japonica* (Yang et al., 2020), and *Haliotis discus* (Wells and Dale, 2018). However, no report on the population genetic analysis of *M. nudus* by using GBS was found up to now.

In the present study, GBS was used to genotype a total of 80 individuals consisting of five populations, covering the distribution range of *M. nudus* in China seas. The objectives were to detect and genotype single-nucleotide polymorphisms (SNPs) at a genome-wide level and to characterize the genetic diversity and population structure of *M. nudus*. The results will provide useful information for the utility of GBS on the genetic analysis of sea urchin species and contribute to the population conservation and genetic improvement of *M. nudus*.

MATERIALS AND METHODS

Sampling

In 2020, a total of 80 individuals were collected from five localities by SCUBA diving (16 individuals from each locality, **Figure 1**), covering the natural distribution range of *M. nudus* in China. Gonad tissue was sampled and fixed by ethanol on site. Genomic DNA of each sample was isolated from gonad tissue by using Plant Genomic DNA Kit (TIANGEN, Beijing,

China) following the manual instruction. The purity and integrity of extracted DNA were determined by using a NanoDrop 1000 Spectrophotometer (NanoDrop, Wilmington, DE, United States) and electrophoresis on 1% agarose gel. Qualified genomic DNA was stored at -20°C .

Sequencing and Genotyping

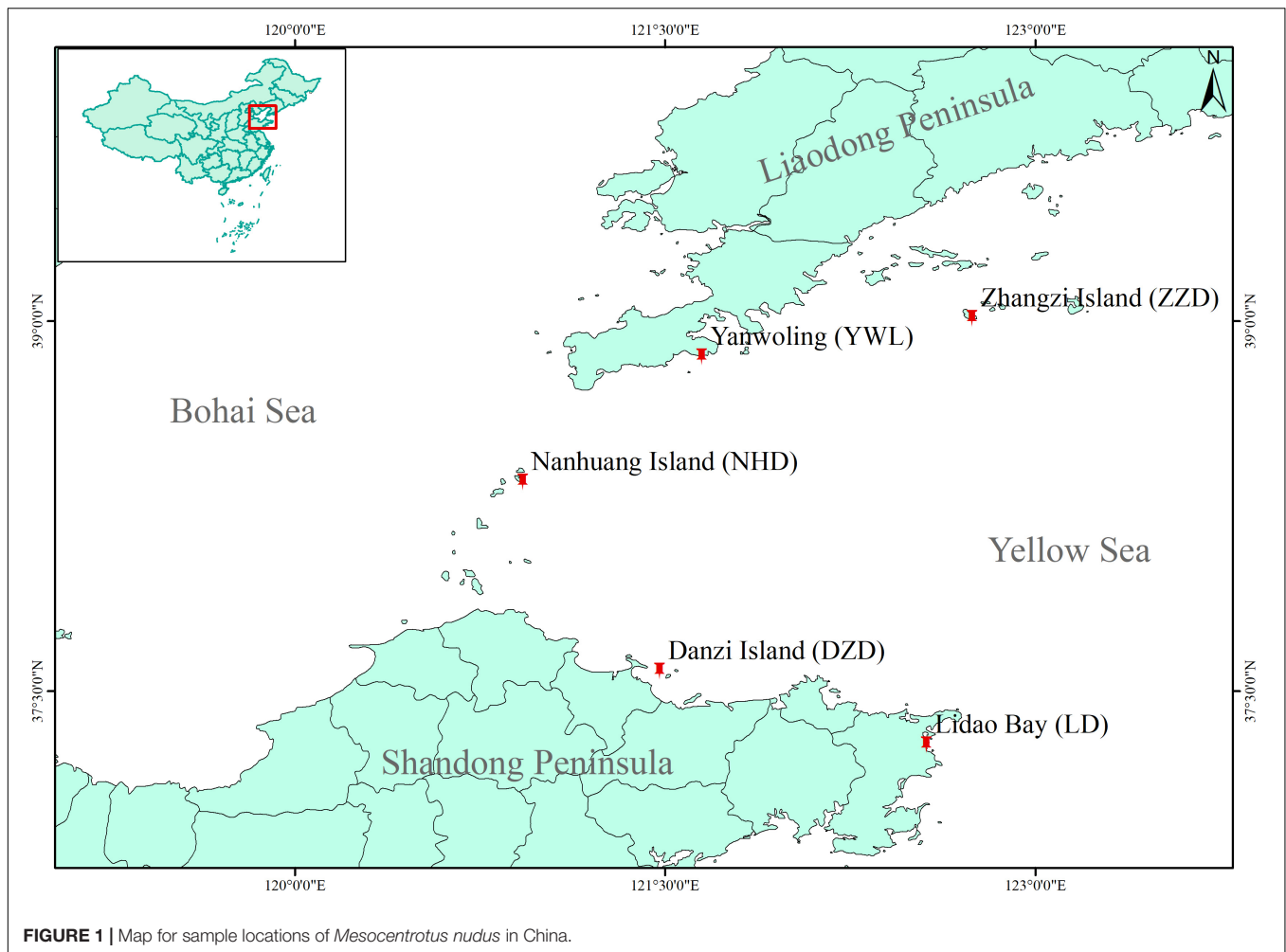
All samples were sequenced by using the GBS (Qi et al., 2018) method, which was performed by OE Biotech Co., Ltd. (Shanghai, China). Briefly, extracted DNA from each individual was digested with restriction enzymes *Pst*I-HF and *Msp*I, and the barcoded adapters and common adapter were respectively ligated on the *Pst*I cut site and the *Msp*I cut site of all samples by T4 DNA ligase. Then, the fragments of 300–700 bp were retrieved using recovery system of improved magnetic bead and amplified by PCR using high-fidelity enzymes. Finally, amplification fragments were sequenced on an Illumina Nova, PE150 (Illumina, Inc., San Diego, CA, United States). The generated raw reads were filtered to remove the potential adaptor sequences by using STACKS software (Catchen et al., 2013). After quality control, there was no reference genome available for aligning the clean reads for SNP discovery. Therefore, *ustacks* (-M 3), *cstacks* (-n 3), *sstacks*, *tsv2bam*, and *gstacks* programs using STACKS pipeline were used for *de novo* SNP discovery. The initial SNPs were filtered according to the following parameters: (1) minimum sequence depth was above 5; (2) the allelic number was equal to 2; (3) minor allele frequency (MAF) was greater than 0.05, and (4) missing rate was lower than 10%. The quality control of SNP data was performed using *vcftools* (Danecek et al., 2011) and R software (R Core Team, 2018).

Genetic Diversity Analysis

Population genetic diversity within overall populations and within each of the five populations was assessed. The polymorphic information content (PIC) was calculated using R package *snpReady* (Granato et al., 2018). The observed heterozygosity (H_o), expected heterozygosity (H_e), and inbreeding coefficient (F_{is}) were calculated at each SNP locus, and also across all loci, using *hierfstat* package in R software (Goudet, 2005). Besides, multilocus heterozygosity (MLH) and standardized MLH (sMLH) were calculated for all individuals using *inbreedR* package (Stoffel et al., 2016). The effective population size (N_e) using the linkage disequilibrium (LD) method was estimated by using *NeEstimator V2.01* (Do et al., 2014). Considering the small size of each population, the N_e was only analyzed for overall populations.

Population Structure Analysis

Initial analysis of population structure was carried out by principal component analysis (PCA) using R package *SNPRelate* (Zheng et al., 2012) and plotted using *Scatterplot3d* package (Ligges and Mächler, 2002). In addition, the levels of ancestry and admixture proportions of individuals were assessed by using R package *LEA* (Frichot and François, 2015). The number of ancestral populations (k) ranging between 1 and 10 were tested, and 10 replicate analyses were run for each value of k . The optimal k was chosen based on cross-entropy and cross-validation errors



(Frichot et al., 2014). To better understand fine-scale patterns of genetic structure between populations, pairwise F_{st} values were calculated with the function `pairwise.neifst` and significance was tested using 1,000 bootstrap replicates with the function `boot.ppfst` in the R package `hierfstat` (Goudet, 2005).

Phylogenetic Analysis

The individual-level phylogenetic tree was constructed using `SNPhylo` (Lee et al., 2014) with an automated bash shell script `snphylo.sh`. For this analysis, an LD threshold ($r^2 = 0.8$) was used to reduce SNP redundancy, and 1,000 bootstrap analyses were fulfilled. The individual phylogenetic tree was visualized by using R package `ggtree` (Yu et al., 2017). Besides, the population-level phylogeny using the maximum likelihood approach was also inferred by using `TreeMix` (Pickrell and Pritchard, 2012). Considering that the missing data can affect the accuracy of `TreeMix` inference, the SNPs with missing values were removed. The population-level phylogeny was drawn by using `plotting_funcs.R` script¹.

¹https://github.com/joepickrell/pophistory-tutorial/blob/master/example2/plotting_funcs.R

RESULTS

Sequencing and Genotyping

All samples were sequenced by using GBS at efficient sequencing depths of approximately 34.11-fold. In total, 76.76 Gb of raw data was produced, with an average of 0.96 Gb per individual. After filtering, a total of 72.39 Gb of clean data was retained with an average effective rate (clean reads compared with raw reads) of 94.30%. Statistics on clean reads further showed the quality value 20 (Q20) $\geq 96.33\%$ and quality value 30 (Q30) $\geq 90.41\%$, and the guanine–cytosine (GC) contents ranged from 40.43 to 42.07%. The reference sequence constructed using `STACKS` pipeline contained 439,316 tags with an average length of 277 bp, the longest one being 1,036 bp and the shortest one being 71 bp. Initially, 992,728 putative SNPs were identified. After quality control based on successive filtering steps for sequence depth, allelic number, MAF, and missing rate, a total of 51,738 biallelic SNP markers located on 15,562 tags were retained.

Genetic Diversity

Several diversity indices are shown in **Table 1**. The PIC ranged from 0.213 (LD) to 0.220 (DZD), with an average of 0.217. The

TABLE 1 | Genetic diversity summary of *Mesocentrotus nudus* from five localities in China.

	PIC	Ho	He	F _{is}	MLH	sMLH	Ne
DZD	0.220	0.239	0.276	0.135	0.246	1.005	–
NHD	0.219	0.238	0.275	0.135	0.244	1.000	–
LD	0.213	0.230	0.266	0.135	0.244	1.006	–
ZZD	0.215	0.232	0.270	0.141	0.241	0.988	–
YWL	0.217	0.236	0.273	0.133	0.246	1.004	–
ALL	0.217	0.235	0.272	0.136	0.244	1.001	724.3

PIC, polymorphism information content; Ho, observed heterozygosity; He, expected heterozygosity; F_{is}, inbreeding coefficient; MLH, multilocus heterozygosity; sMLH, standardized MLH; Ne, effective population size.

observed heterozygosity (Ho) and expected heterozygosity (He) were in the ranges Ho = 0.230 to 0.239 and He = 0.266 to 0.276, with an average of Ho = 0.235 and He = 0.272, respectively. Regarding the inbreeding coefficient (F_{is}), the lowest value was detected in the YWL and the highest in ZZD. Average individual MLH ranged from 0.241 to 0.246. Average sMLH values slightly varied across populations. The estimated effective population size (Ne) was 724.3 for all populations.

Population Genetic Structure

The PCA revealed that the majority of samples were clustered together, and no geographical patterns were observed (Figure 2). Similar results can be achieved from the admixture analysis (Figure 3). With the use of LEA, the minimum value of the cross-validation errors was 0.710 when k = 2, and the values continuously increased with k from 3 to 10 (Figure 3A). All

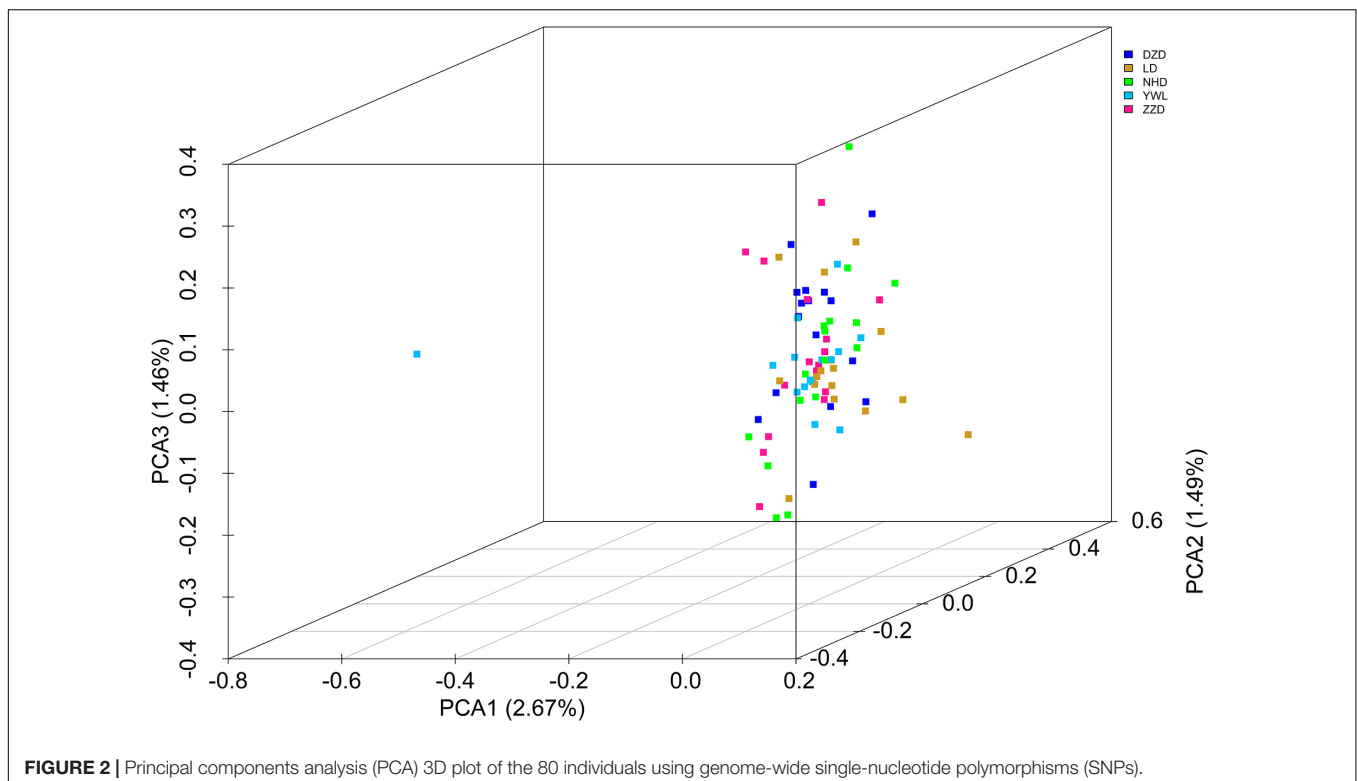
individuals were classified into two groups at the level of k = 2, but one group contained only two individuals from YWL (Figure 3B). To further investigate the population structure, the analysis at k = 3 was also performed, and similar results were observed (Figure 3C). The pairwise F_{st} values ranged from 0.0001 to 0.0039 with a mean value of 0.0019 (Table 2). The highest level of differentiation was observed between LD and YWL, whereas DZD and NHD differentiated the lowest.

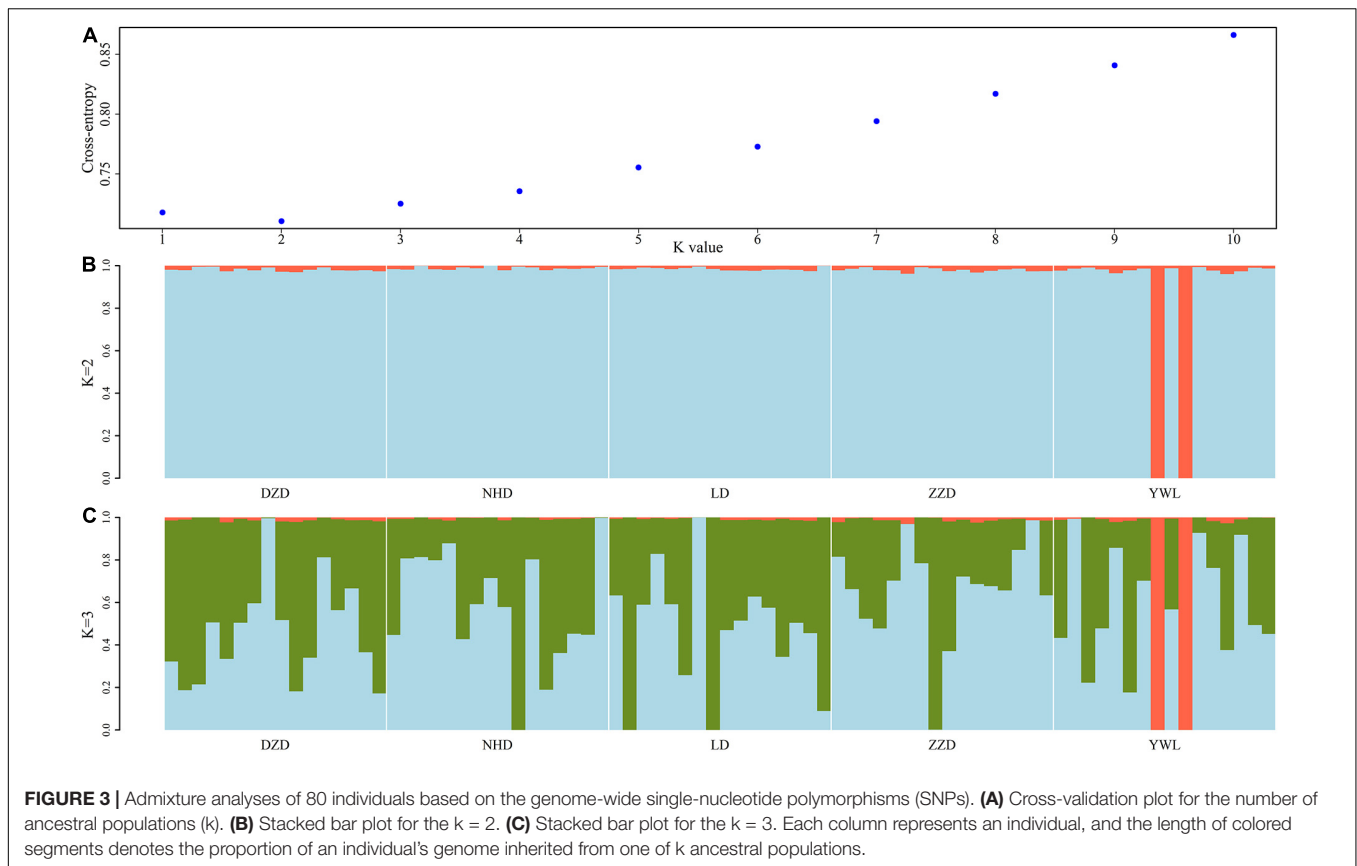
Phylogenetic Tree

The individual-level phylogenetic tree was constructed with 33,178 biallelic SNPs (Figure 4), in which all individuals belong to the same branch except YWL8 and YWL10. The population-level phylogeny constructed with 5,460 biallelic SNPs showed that the five populations appeared to originate from the same group, and three migration events were modeled among different branches (Figure 5). Overall, the phylogenetic tree analysis coincided with the PCA and admixture analysis, which corroborated a high genetic connectivity with even biological mixing among all locations.

DISCUSSION

Reduced-representation sequencing could provide an opportunity for those species without prior genetic resources to understand their basic properties of the genome (Silliman, 2019; Yang et al., 2020). In this study, a large number of genome fragments were obtained for *M. nudus* by using GBS. By analyzing the DNA base composition, the percentage of GC





content was up to 41%, which was higher than that of the reported sea urchin, including *Strongylocentrotus purpuratus* (36.9%) (Sodergren et al., 2006), and *Lytechinus variegatus* (36.1%) (Davidson et al., 2020). Considering that genomic GC content is closely associated with genome size and significantly affects the genome functioning and species ecology (Šmarda et al., 2014), this result suggested that *M. nudus* may have a more complex genome than *S. purpuratus* and *L. variegatus*.

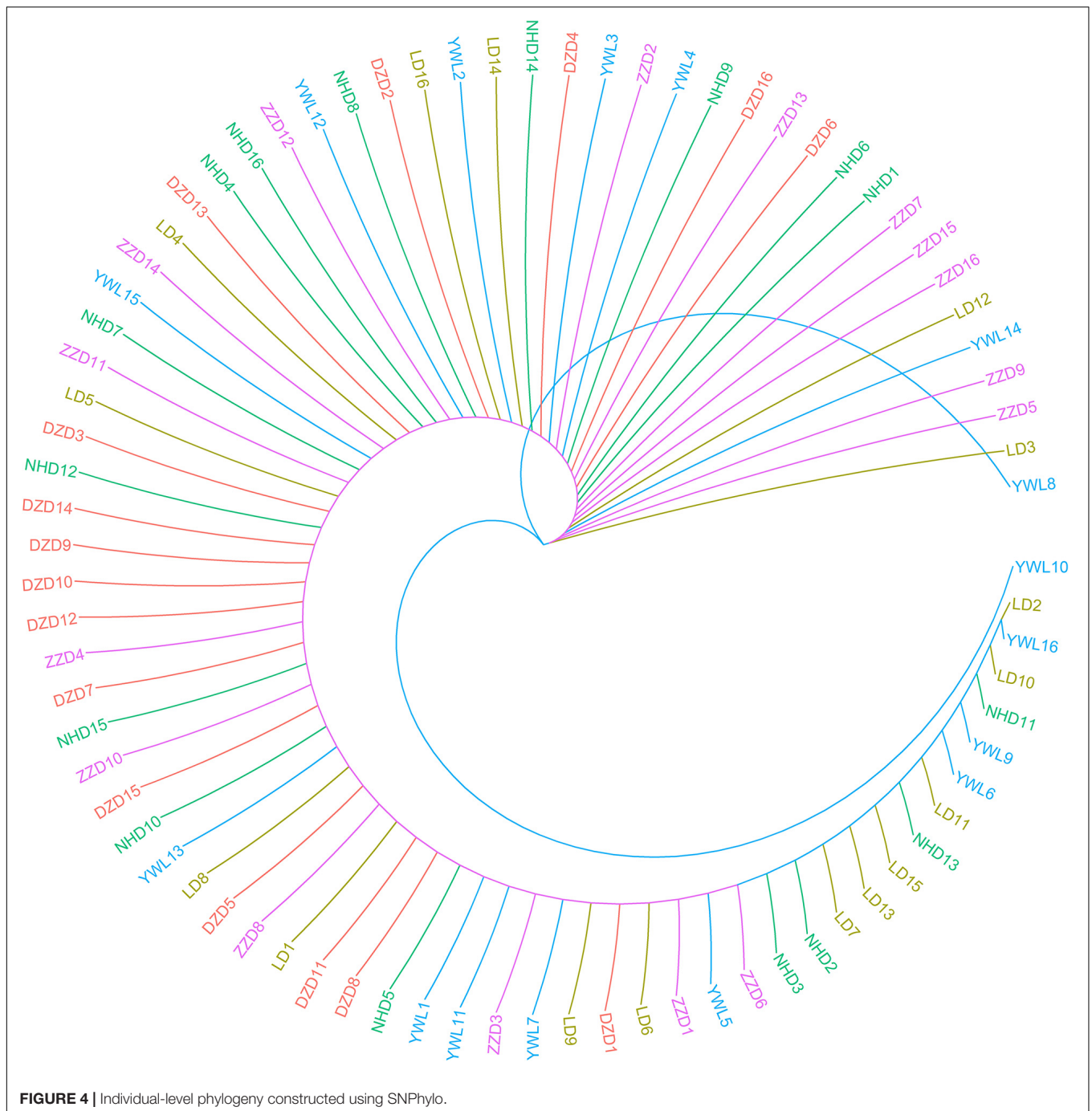
This study is the first report to identify genome-wide SNPs for *M. nudus* and to determine the genetic diversity and population structure of this species in China seas. Several indices concerning heterozygosity were firstly analyzed across five geographical populations. In general, the DZD population displayed the highest genetic diversity. This result may benefit from the good ecological status in the surrounding waters of Danzi island especially after removal of the marine raft culture and minimizing

the amount of waste water discharged into the coastal waters since 2010 (Li et al., 2013). In contrast, the Lidao Bay as an important fishery and aquaculture water was seriously affected by anthropogenic disturbance (Jiang et al., 2013; Wu et al., 2016), which may result in the lowest PIC, H_o , and H_e for LD population. Besides, compared with previous studies on the population genetics of aquatic animals by using genome-wide SNPs, a moderate level of heterozygosity was observed for *M. nudus* in the current study. For example, the average H_o in *M. nudus* was lower than that in *Oncorhynchus keta* (Waples et al., 2017) and *Paracentrotus lividus* (Carreras et al., 2020), but higher than in several species such as *Oreochromis urolepis* (Nyinondi et al., 2020), *O. lurida* (Silliman, 2019), and *Isocladus armatus* (Wells and Dale, 2018). However, positive F_{is} values have been observed in *M. nudus*. F_{is} values could reflect the deviation from the Hardy–Weinberg equilibrium (HWE) genotype frequencies and indirectly reflect relative population heterozygosity. Generally, positive F_{is} values may be caused by mating among relatives, life history trait with free-spawned planktonic sperm, and selection acting on the genetic markers (Zouros and Foltz, 1984; David et al., 1997; Whitaker, 2004; Addison and Hart, 2005). In the current study, the estimated N_e value for *M. nudus* was significantly lower than that for other marine species such as *Chinook salmon* (Larson et al., 2014), *Salmo salar* (Johnston et al., 2014), and *Panulirus homarus* (Al-Breiki et al., 2018). According to the proposal by Frankham et al. (2014), this value is too low to

TABLE 2 | Pairwise F_{st} values among populations.

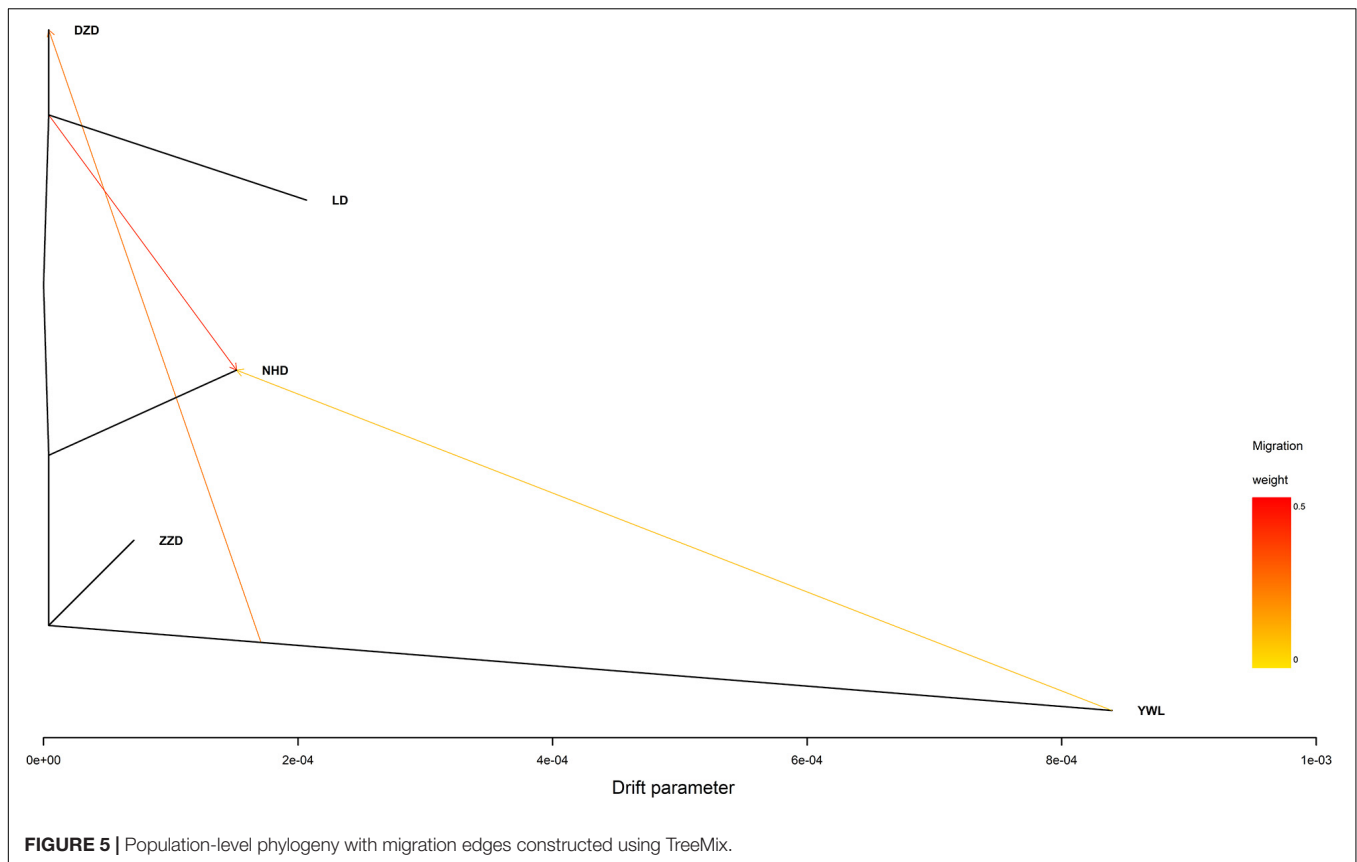
	DZD	NHD	LD	ZZD	YWL
DZD	–	–	–	–	–
NHD	0.0001	–	–	–	–
LD	0.0014	0.0018	–	–	–
ZZD	0.0003	0.0016	0.0012	–	–
YWL	0.0019	0.0032	0.0039	0.0031	–

No significant F_{st} values were found at $p < 0.05$.



retain evolutionary potential for *M. nudus* and thus may lead to inbreeding. Besides, the life history of *M. nudus* can also contribute to the positive F_{IS} because the species like *M. nudus* with free-spawned planktonic sperm tend to have higher F_{IS} than those species that copulate or have some form of direct sperm transfer to females or benthic egg masses (Addison and Hart, 2005). In addition, the population were sampled along coastal zone of the Yellow Sea and Bohai Sea, where they have been heavily disturbed by anthropogenic activities including land-source pollution, aquaculture pollution, and reclamation. The

phenomena of eutrophication and hypoxia are happening with an increasing frequency in recent years, resulting in drastic changes in the physical and chemical parameters of seawater such as nutrient content, dissolved oxygen (DO), and pH especially in a small spatial scale. These drastic and persistent environmental disturbances can not only lead to the reduction of population size but also impose strong selective pressure on *M. nudus*, which is relatively weak in activity and thus may contribute to the high F_{IS} value. Overall, the positive F_{IS} and low N_e suggested that the genetic diversity of *M. nudus* should be



constantly monitored, and the protective measures should be carried out in China.

In order to assess the genetic differences among populations, pairwise F_{st} values were estimated. The results showed that all F_{st} values were far less than 0.05, which implies that there were low genetic differentiation and high genetic connectivity among five geographical populations. This result can be confirmed by PCA, admixture analysis, and phylogenetic analysis. This phenomenon may be mainly related to the lack of dispersal barriers in the Yellow Sea and Bohai Sea, and also the fact that *M. nudus* has a pelagic phase lasting for 1 month in the water column (Dautov et al., 2020). However, it is worth noting that two individuals from YWL deviated significantly from the main cluster and have little genetic association with other individuals. This phenomenon can also be found in similar studies. For example, individual ancestry analysis for five populations of Pacific cod showed that two individuals from coastal area had no similar ancestries as coastal fish (Drinan et al., 2018). Interestingly, these individuals displayed the same ancestry as the fish from the Salish Sea. Similarly, some seahorses from New Zealand were descendants of Australian ancestors (Ashe and Wilson, 2019). Therefore, in the current study, two differentiated individuals from YWL may imply that there is a genetically differentiated population in the adjacent sea. Especially, it is worth exploring whether the population structure of *M. nudus* from the Japan Sea will be different from that of the Yellow Sea and Bohai Sea, considering the

two sea areas are separated by the Korean Peninsula, which might form a dispersal barrier. Besides, the small sampling size in the current study may be a potential factor leading to the cryptic genetic structure of *M. nudus* that may not be fully revealed. Therefore, the investigation with larger spatial scale and sample size of *M. nudus* needs to be implemented to fully assess the population structure and genetic diversity of *M. nudus* in the future.

CONCLUSION

In the present study, a total of 51,738 high-quality SNPs were detected, indicating that the GBS technology is a powerful tool for the genome-wide SNP discovery of *M. nudus*. Diversity index analysis showed that all populations have a similar pattern with positive F_{is} and low N_e , suggesting that it is necessary to carry out the conservation of *M. nudus* in China. Low genetic differentiation and high genetic connectivity among five geographical populations were detected by pairwise F_{st} , PCA, admixture analysis, and phylogenetic analysis. Besides, two individuals originating from an isolated ancestor were identified, which may be crucial for the conservation of genetic diversity and germplasm improvement. Thus, the investigation with larger spatial scale and sample size needs to be implemented to assess the population structure and genetic diversity of *M. nudus* in the future.

DATA AVAILABILITY STATEMENT

The datasets presented in this study can be found in online repositories. The names of the repository/repositories and accession number(s) can be found below: GenBank (Accession number: PRJNA738544).

ETHICS STATEMENT

Each of the procedures that were used to handle and treat the *Mesocentrotus nudus* during this study was approved by the Key Laboratory of Coastal Biology and Biological Resources Utilization, Yantai Institute of Coastal Zone Research, Chinese Academy of Sciences, prior to the initiation of the study and the Animal Management Regulations, revised on March 1, 2017, No. 676.

REFERENCES

- Adachi, K., Suzuki, T., Okumura, S. I., Funayama, S., and Moriyama, S. (2020). Influence of the 2011 Tohoku tsunami on the genetic structure of wild sea urchin (*Mesocentrotus nudus*) populations in Sanriku, Japan. *Mar. Ecol. Prog. Ser.* 41:e12584. doi: 10.1111/maec.12584
- Addison, J., and Hart, M. (2005). Spawning, copulation and inbreeding coefficients in marine invertebrates. *Biol. Lett.* 1, 450–453. doi: 10.1098/rsbl.2005.0353
- Agatsuma, Y. (2020). *Mesocentrotus nudus*. *Dev. Aquac. Fish. Sci.* 43, 627–641.
- Al-Breiki, R. D., Kjeldsen, S. R., Afzal, H., Al Hinai, M. S., Zenger, K. R., Jerry, D. R., et al. (2018). Genome-wide SNP analyses reveal high gene flow and signatures of local adaptation among the scalloped spiny lobster (*Panulirus homarus*) along the Omani coastline. *BMC Genomics* 19:690. doi: 10.1186/s12864-018-5044-8
- Andrew, N., Agatsuma, Y., Ballesteros, E., Bazhin, A., Creaser, E., Barnes, D., et al. (2002). Status and management of world sea urchin fisheries. *Oceanogr. Mar. Biol.* 40, 343–425.
- Ashe, J. L., and Wilson, A. B. (2019). Navigating the southern seas with small fins: genetic connectivity of seahorses (*Hippocampus abdominalis*) across the Tasman Sea. *J. Biogeogr.* 47, 207–219. doi: 10.1111/jbi.13733
- Carreras, C., García-Cisneros, A., Wangenstein, O. S., Ordóñez, V., Palacín, C., Pascual, M., et al. (2020). East is east and west is west: population genomics and hierarchical analyses reveal genetic structure and adaptation footprints in the keystone species *Paracentrotus lividus* (Echinoidea). *Divers. Distrib.* 26, 382–398. doi: 10.1111/ddi.13016
- Catchen, J., Hohenlohe, P. A., Bassham, S., Amores, A., and Cresko, W. A. (2013). Stacks: an analysis tool set for population genomics. *Mol. Ecol.* 22, 3124–3140. doi: 10.1111/mec.12354
- Danecek, P., Auton, A., Abecasis, G., Albers, C. A., Banks, E., DePristo, M. A., et al. (2011). The variant call format and VCFtools. *Bioinformatics* 27, 2156–2158. doi: 10.1093/bioinformatics/btr330
- Dautov, S., Dautova, T., and Kashenko, S. (2020). Towards a scientific-based farming of sea urchins: first steps in the cultivation of *Diadema setosum*, *Diadema savignyi* and *Mesocentrotus nudus*. *APN Sci. Bull.* 10, 109–118. doi: 10.30852/sb.2020.1284
- David, P., Perdiou, M. A., Pernot, A. F. O., and Jarne, P. (1997). Fine-grained spatial and temporal population genetic structure in the marine bivalve *Spisula ovalis*. *Evolution* 51, 1318–1322. doi: 10.2307/2411061
- Davidson, P. L., Guo, H., Wang, L., Berrio, A., Zhang, H., Chang, Y., et al. (2020). Chromosomal-level genome assembly of the sea urchin *Lytechinus variegatus* substantially improves functional genomic analyses. *Genome Biol. Evol.* 12, 1080–1086. doi: 10.1093/gbe/evaa101
- Ding, J., Chang, Y., Wang, C., and Cao, X. (2007). Evaluation of the growth and heterosis of hybrids among three commercially important sea urchins in China: *Strongylocentrotus nudus*, *S. intermedius* and *Anthocardia crassispina*. *Aquaculture* 272, 273–280. doi: 10.1016/j.aquaculture.2007.07.231

AUTHOR CONTRIBUTIONS

QW conducted the experiment and data processing. BL conceived and supervised the project. QW and YL collected the experimental animals. LY and LC contributed to preparing the genomic DNA for SNP genotyping. QW and BL wrote the manuscript. All authors have read and approved the manuscript.

FUNDING

This work was supported by Strategic Priority Research Program of the Chinese Academy of Sciences (XDA23050304), International Science Partnership Program of the Chinese Academy of Sciences (133137KYSB20200002), and Yantai Science and Technology Planning Project (2020YT06000390).

- Do, C., Waples, R. S., Peel, D., Macbeth, G., Tillett, B. J., and Ovenden, J. R. (2014). NeEstimator v2: re-implementation of software for the estimation of contemporary effective population size (Ne) from genetic data. *Mol. Ecol. Resour.* 14, 209–214. doi: 10.1111/1755-0998.12157
- Drinan, D. P., Gruenthal, K. M., Canino, M. F., Lowry, D., Fisher, M. C., and Hauser, L. (2018). Population assignment and local adaptation along an isolation-by-distance gradient in Pacific cod (*Gadus macrocephalus*). *Evol. Appl.* 11, 1448–1464. doi: 10.1111/eva.12639
- Elshire, R. J., Glaubitz, J. C., Sun, Q., Poland, J. A., Kawamoto, K., Buckler, E. S., et al. (2011). A robust, simple genotyping-by-sequencing (GBS) approach for high diversity species. *PLoS One* 6:e19379. doi: 10.1371/journal.pone.0019379
- Frankham, R., Bradshaw, C. J. A., and Brook, B. W. (2014). Genetics in conservation management: revised recommendations for the 50/500 rules, red list criteria and population viability analyses. *Biol. Conserv.* 170, 56–63. doi: 10.1016/j.biocon.2013.12.036
- Frichot, E., and François, O. (2015). LEA: an R package for landscape and ecological association studies. *Methods Ecol. Evol.* 6, 925–929. doi: 10.1111/2041-210X.12382
- Frichot, E., Mathieu, F., Trouillon, T., Bouchard, G., and François, O. (2014). Fast and efficient estimation of individual ancestry coefficients. *Genetics* 196, 973–983. doi: 10.1534/genetics.113.160572
- Goudet, J. (2005). Hierfstat, a package for R to compute and test hierarchical F-statistics. *Mol. Ecol. Notes* 5, 184–186. doi: 10.1111/j.1471-8286.2004.00828.x
- Granato, I. S. C., Galli, G., de Oliveira Couto, E. G., e Souza, M. B., Mendonça, L. F., and Fritsche-Neto, R. (2018). Snpreddy: a tool to assist breeders in genomic analysis. *Mol. Breed.* 38:102. doi: 10.1007/s11032-018-0844-8
- Harris, L. G., and Eddy, S. D. (2015). “Sea urchin ecology and biology,” in *Echinoderm Aquaculture*, eds N. P. Brown and S. D. Eddy (Hoboken, NJ: John Wiley & Sons), 3–24.
- Jiang, Z., Fang, J., Mao, Y., Han, T., and Wang, G. (2013). Influence of seaweed aquaculture on marine inorganic carbon dynamics and sea-air CO₂ flux. *J. World Aquac. Soc.* 44, 133–140. doi: 10.1111/jwas.12000
- Johnston, S. E., Orell, P., Pritchard, V. L., Kent, M. P., Lien, S., Niemelä, E., et al. (2014). Genome-wide SNP analysis reveals a genetic basis for sea-age variation in a wild population of Atlantic salmon (*Salmo salar*). *Mol. Ecol.* 23, 3452–3468. doi: 10.1111/mec.12832
- Larson, W. A., Seeb, L. W., Everett, M. V., Waples, R. K., Templin, W. D., and Seeb, J. E. (2014). Genotyping by sequencing resolves shallow population structure to inform conservation of Chinook salmon (*Oncorhynchus tshawytscha*). *Evol. Appl.* 7, 355–369. doi: 10.1111/eva.12128
- Lee, T.-H., Guo, H., Wang, X., Kim, C., and Paterson, A. H. (2014). SNPhylo: a pipeline to construct a phylogenetic tree from huge SNP data. *BMC Genomics* 15:162. doi: 10.1186/1471-2164-15-162

- Li, B., Wang, Q., and Li, B. (2013). Assessing the benthic ecological status in the stressed coastal waters of Yantai, Yellow Sea, using AMBI and M-AMBI. *Mar. Pollut. Bull.* 75, 53–61. doi: 10.1016/j.marpolbul.2013.08.007
- Li, J., and Qi, L. (2008). A set of microsatellite markers for use in the endangered sea urchin *Strongylocentrotus nudus* developed from *S. purpuratus* ESTs. *Conserv. Genet.* 9, 743–745. doi: 10.1007/s10592-007-9382-3
- Ligges, U., and Mächler, M. (2002). Scatterplot3d-an R package for visualizing multivariate data. *J. Statist. Softw.* 8, 1–20.
- Liu, C., Lin, Q., Yi, G., Liang, Y., Xing, Y., and Tao, X. (2007). Characterization and antitumor activity of a polysaccharide from *Strongylocentrotus nudus* eggs. *Carbohydr. Polym.* 67, 313–318. doi: 10.1016/j.carbpol.2006.05.024
- Lukyanova, O. N., Zhuravel, E. V., Chulchekov, D. N., and Mazur, A. A. (2017). Sea urchin embryogenesis as bioindicators of marine pollution in impact areas of the Sea of Japan/East Sea and the Sea of Okhotsk. *Arch. Environ. Contam. Toxicol.* 73, 322–333. doi: 10.1007/s00244-017-0388-7
- Mi, X., Wei, Z., Zhou, Z., and Liu, X. (2014). Identification and profiling of sex-biased microRNAs from sea urchin *Strongylocentrotus nudus* gonad by solexa deep sequencing. *Comp. Biochem. Physiol. Part D Genom. Proteomics* 10, 1–8. doi: 10.1016/j.cbd.2014.01.001
- Nyinondi, C. S., Mtolera, M. S., Mmochi, A. J., Lopes Pinto, F. A., Houston, R. D., de Koning, D. J., et al. (2020). Assessing the genetic diversity of farmed and wild Rufiji tilapia (*Oreochromis urolepis urolepis*) populations using ddRAD sequencing. *Ecol. Evol.* 10, 10044–10056. doi: 10.1002/ece3.6664
- Pickrell, J., and Pritchard, J. (2012). Inference of population splits and mixtures from genome-wide allele frequency data. *PLoS Genet.* 8:e1002967. doi: 10.1038/npre.2012.6956.1
- Qi, P., Gimode, D., Saha, D., Schröder, S., Chakraborty, D., Wang, X., et al. (2018). UGBS-Flex, a novel bioinformatics pipeline for imputation-free SNP discovery in polyploids without a reference genome: finger millet as a case study. *BMC Plant Biol.* 18:117. doi: 10.1186/s12870-018-1316-3
- R Core Team (2018). *R: A Language and Environment for Statistical Computing*. Vienna: R Core Team.
- Silliman, K. (2019). Population structure, genetic connectivity, and adaptation in the *Olympia oyster* (*Ostrea lurida*) along the west coast of North America. *Evol. Appl.* 12, 923–939. doi: 10.1111/eva.12766
- Šmarda, P., Bureš, P., Horová, L., Leitch, I. J., Mucina, L., Pacini, E., et al. (2014). Ecological and evolutionary significance of genomic GC content diversity in monocots. *Proc. Natl. Acad. Sci. U.S.A.* 111, E4096–E4102. doi: 10.1073/pnas.1321152111
- Sodergren, E., Weinstock, G. M., Davidson, E. H., Cameron, R. A., Gibbs, R. A., Angerer, R. C., et al. (2006). The genome of the sea urchin *Strongylocentrotus purpuratus*. *Science* 314, 941–952. doi: 10.1126/science.1133609
- Song, J., and Duan, L. (2019). “The bohai sea,” in *World Seas: An Environmental Evaluation*, 2nd Edn, ed. C. Sheppard (Cambridge, MA: Academic Press), 377–394.
- Stoffel, M. A., Esser, M., Kardos, M., Humble, E., Nichols, H., David, P., et al. (2016). Inbreedr: an R package for the analysis of inbreeding based on genetic markers. *Methods Ecol. Evol.* 7, 1331–1339. doi: 10.1111/2041-210X.12588
- Waples, R., Seeb, J., and Seeb, L. (2017). Congruent population structure across paralogous and nonparalogous loci in Salish sea chum salmon (*Oncorhynchus keta*). *Mol. Ecol.* 26, 4131–4144. doi: 10.1111/mec.14163
- Wells, S. J., and Dale, J. (2018). Contrasting gene flow at different spatial scales revealed by genotyping-by-sequencing in *Isocladus armatus*, a massively colour polymorphic New Zealand marine isopod. *PeerJ* 6:e5462. doi: 10.7717/peerj.5462
- Whitaker, K. (2004). Non-random mating and population genetic subdivision of two broadcasting corals at Ningaloo Reef, Western Australia. *Mar. Biol.* 144, 593–603. doi: 10.1007/s00227-003-1220-7
- Wu, Z., Zhang, X., Lozano-Montes, H. M., and Loneragan, N. R. (2016). Trophic flows, kelp culture and fisheries in the marine ecosystem of an artificial reef zone in the Yellow Sea. *Estuar. Coast. Shelf Sci.* 182, 86–97. doi: 10.1016/j.ecss.2016.08.021
- Yang, T., Gao, T., Meng, W., and Jiang, Y. (2020). Genome-wide population structure and genetic diversity of Japanese whiting (*Sillago japonica*) inferred from genotyping-by-sequencing (GBS): implications for fisheries management. *Fish. Res.* 225:105501. doi: 10.1016/j.fishres.2020.105501
- Yu, G., Smith, D. K., Zhu, H., Guan, Y., and Lam, T. T. Y. (2017). Ggtree: an R package for visualization and annotation of phylogenetic trees with their covariates and other associated data. *Methods Ecol. Evol.* 8, 28–36. doi: 10.1111/2041-210X.12628
- Zhang, L., Dong, Y., Yang, A., Chen, Z., Wang, X., Guan, X., et al. (2012). Genetic diversity analysis of three geographic populations of sea urchin *Strongylocentrotus nudus* by AFLP. *Fish. Sci.* 31, 132–136. doi: 10.16378/j.cnki.1003-1111.2012.03.007
- Zheng, X., Levine, D., Shen, J., Gogarten, S. M., Laurie, C., and Weir, B. S. (2012). A high-performance computing toolset for relatedness and principal component analysis of SNP data. *Bioinformatics* 28, 3326–3328. doi: 10.1093/bioinformatics/bts606
- Zouros, E., and Foltz, D. W. (1984). Possible explanations of heterozygote deficiency in bivalve mollusks. *Malacologia* 25, 583–591.

Conflict of Interest: The authors declare that the research was conducted in the absence of any commercial or financial relationships that could be construed as a potential conflict of interest.

Publisher’s Note: All claims expressed in this article are solely those of the authors and do not necessarily represent those of their affiliated organizations, or those of the publisher, the editors and the reviewers. Any product that may be evaluated in this article, or claim that may be made by its manufacturer, is not guaranteed or endorsed by the publisher.

Copyright © 2021 Wang, Liu, Yan, Chen and Li. This is an open-access article distributed under the terms of the Creative Commons Attribution License (CC BY). The use, distribution or reproduction in other forums is permitted, provided the original author(s) and the copyright owner(s) are credited and that the original publication in this journal is cited, in accordance with accepted academic practice. No use, distribution or reproduction is permitted which does not comply with these terms.