

Child Linear Growth During and After the First 1000 Days Is Positively Associated with Intellectual Functioning and Mental Health in School-Age Children in Vietnam

Phuong Hong Nguyen,^{1,2} Lan Mai Tran,³ Long Quynh Khuong,⁴ Melissa F Young,⁵ Thai Hong Duong,^{2,3} Hoang Cong Nguyen,^{2,3} Ann M DiGirolamo,⁶ Reynaldo Martorell,⁵ and Usha Ramakrishnan⁵

¹International Food Policy Research Institute, Washington, DC, USA; ²Thai Nguyen University of Pharmacy and Medicine, Thai Nguyen, Vietnam; ³Thai Nguyen National Hospital, Thai Nguyen, Vietnam; ⁴Hanoi University of Public Health, Hanoi, Vietnam; ⁵Hubert Department of Global Health, Emory University, Atlanta, GA, USA; and ⁶Georgia State University, Atlanta, GA, USA

ABSTRACT

Background: Millions of children fail to meet their developmental potential and experience mental health concerns globally. Evidence is mixed on whether growth beyond the first 1000 d of life influences intellectual functioning and mental health in school-age children.

Objectives: We examined associations of childhood growth before and after the first 1000 d of life with child intellectual functioning and mental health at age 6–7 y.

Methods: We used data from a follow-up of a randomized controlled trial of preconception supplementation (PRECONCEPT study) in Vietnam. A total of 5011 women participated in the study and 1579 children were born during 2012–2014. At age 6–7 y, child intellectual functioning was assessed using the Wechsler Intelligence Scale for Children, and mental health concerns were measured using the Strengths and Difficulties Questionnaire. Multivariable linear models were used to examine the independent association of child size at age 2 y [height-for-age z-score (HAZ) and body-mass-index z-score (BMIZ)] and conditional measures of linear and ponderal growth between the ages of 2 and 7 y.

Results: HAZ at 2 y was positively associated with the Full-Scale Intelligence Quotient ($\beta = 1.4$; 95% CI: 0.5, 2.2 points) and its subdomains, namely Perceptual Reasoning Index, Working Memory Index, and Processing Speed Index ($\beta = 1.0$ – 1.4 points). Higher HAZ at 2 y was associated with lower overall mental health concerns ($\beta = -0.24$; 95% CI: -0.47 , -0.01) and peer problems ($\beta = -0.08$; 95% CI: -0.17 , -0.01). Faster height gain between 2 and 7 y was associated with higher total intellectual functioning ($\beta = 0.9$; 95% CI: 0.02, 1.8) and fewer emotional issues ($\beta = -0.09$; 95% CI: -0.18 , -0.01). BMIZ at 2 y was not associated with intellectual functioning but was marginally associated with higher conduct and peer problems. Conditional weight gain between 2 and 7 y was not associated with child intellectual functioning or mental health in young school-age children.

Conclusions: Child linear growth both during and beyond the first 1000 d is positively associated with intellectual functioning and mental health during the early school-age years. *J Nutr* 2021;151:2816–2824.

Keywords: child growth, intellectual functioning, mental health, PRECONCEPT, Vietnam

Introduction

Despite increasing global commitment and scaled-up support (1), suboptimal early childhood development continues to be a significant public health concern with an estimated 250 million children failing to achieve their full developmental potential (2). Additionally, 10–20% of children and adolescents worldwide experience poor mental health (3, 4). Multiple risk factors have been reported to influence brain development, cognitive functioning, school performance, and mental health. These

include an array of psychosocial factors (such as caregiving competence, parental responsivity, maternal depression, and exposure to violence) and biological factors (such as maternal nutrition, prenatal and postnatal growth, nutrient deficiencies, infectious diseases, and environmental toxins) that have direct and indirect effects that begin from preconception through adulthood (5, 6).

The first 1000 d of life are recognized as a critical window of opportunity to influence human capital formation and are

characterized by rapid growth and development (7). Most notably, the human brain has a growth spurt late in pregnancy and reaches 80% of adult size by the end of the second year, whereas remodeling, synaptogenesis, and other processes that are involved in higher-order tasks related to psychomotor and language development continue through childhood (7). Intrauterine growth restriction, mainly due to poor maternal nutrition before and during pregnancy, has been associated with delayed development during the early years as well as lower cognitive scores, and poorer learning and problem-solving ability later on (7). Similarly, faltering in linear growth during early childhood has been associated with poor development of language and motor skills at 18 mo (8), as shown in a study in Burkina Faso, Ghana, and Malawi (9). A meta-analysis of observational studies among low- and middle-income countries (LMIC) estimated that each 1 SD difference in length-for-age z score was associated with 0.28 SD and 0.24 SD difference in cognitive and motor development scores, respectively, in children aged <2 y (10).

The preschool and school years are periods during which considerable learning occurs and higher cognitive functioning and skills needed for success emerge (7, 11). It is a time of rapid and dramatic changes in the brain plasticity, and of fundamental acquisition of cognitive development and interpersonal skills (12). Both the learning environment and nutrition (including availability of protein, essential fatty acids, and micronutrients) during early childhood can influence brain functions such as neurogenesis, migration, cell division, myelination, and synaptic development (13–15), and thus influence later intellectual and mental health outcomes. Stunting, an indicator of linear growth retardation that has been estimated to affect >30% of children aged <5 y (16), has been associated with delays in cognitive ability at 5–11 y (10, 17), reduced school achievement, and increased risks of school dropout (18). Underweight and stunting were also associated with behavioral outcomes including more problems with conduct, poorer attention, and poorer social relationships at school age (19).

Although there are strong and consistent findings on the associations between growth in the first 1000 d and intellectual functioning or educational achievement (17, 20–22), evidence on the role of child growth beyond the first 1000 d is limited and contradictory. Some studies have reported positive associations of late postnatal growth with child development outcomes (20, 21), but others have not (23, 24). Other studies (25–29) have evaluated the role of pre- and postnatal growth, but lacked data on growth during the second year of life. Evidence on the relation between timing of growth and child mental health

is also very limited; a study in Belarus showed that faster linear growth in the prenatal period and infancy was positively associated with mental health at early school age (30) whereas a large study in China did not observe these associations (31).

We have the unique opportunity to address the critical gaps in our understanding of the relative importance of timing of child growth on child intellectual functioning and mental health using a preconception longitudinal birth cohort in Vietnam. In this cohort, we have previously conducted a large randomized placebo-controlled trial (RCT) of preconception supplementation (32), and have shown that weekly supplementation with multiple micronutrients (MM) or iron and folic acid (IFA) improved linear growth and fine motor development at age 2 y (33). More recently, we also demonstrated that MM improved working memory and processing speed indices as well as overall intellectual functioning of offspring at 6–7 y (34) when compared with folic acid (FA). Our objective for the current study was to examine associations of summary measures of growth during the first 1000 d [as indicated by attained child size, height-for-age z -score (HAZ), and body-mass-index z -score (BMIZ), at 2 y] compared with later child growth (as indicated by conditional relative height and weight gain between 2 and 6–7 y) with child intellectual functioning and mental health at age 6–7 y. Findings from this study will inform the design of effective programs and policies that address the growing global health challenges of poor early childhood development, mental health concerns, and the double burden of malnutrition in many LMIC (35, 36).

Methods

Data sources and study population

Children in this study were offspring of mothers participating in an RCT (the PRECONCEPT study), which evaluated the effects of preconception micronutrient supplementation on maternal and child health outcomes in Vietnam (32). Details of the parent study have been published previously (32). Briefly, 5011 women of reproductive age were assigned randomly to receive weekly supplements containing either 2800 μ g FA, 60 mg iron and 2800 μ g FA (IFA), or MM containing the same amount of IFA, from baseline until conception, followed by daily prenatal supplements containing 60 mg iron and 400 μ g FA until delivery. Women were followed prospectively to identify pregnancies and evaluate birth outcomes (1599 had live births, 10 twins). Live births were followed through age 2 y and at 6–7 y (Supplemental Figure 1) with follow-up rates of 97% and 91%, respectively. The current analysis includes 1392 children with available data on anthropometry, child intellectual development, and child mental health at 6–7 y.

Outcome measures

At 6–7-y follow-up, child intellectual development was assessed using the Wechsler Intelligence Scale for Children—Fourth Edition (WISC-IV) (37). The WISC-IV consists of 10 core subtests: Vocabulary, Similarities, Comprehension, Block Design, Picture Concepts, Matrix Reasoning, Digit Span, Letter-Number Sequencing, Coding, and Symbol Search. These are summed into 4 indices that represent intellectual functioning in 4 specific cognitive domains [Verbal Comprehension Index (VCI); Perceptual Reasoning Index (PRI); Working Memory Index (WMI); and Processing Speed Index (PSI)] and the Full-Scale Intelligence Quotient (FSIQ). This test has been validated and adapted in the Vietnamese context, including the translation, cultural analysis, modifications, and standardization (38). The WISC-IV was administered following standard procedures (34) by pediatricians or researchers with a master's degree in public health after 2-wk extensive training including classroom lectures and discussions, mock interview, field practice, and

Funding for this research was provided by the Nestlé Foundation, the Mathile Institute for the Advancement of Human Nutrition, and the Micronutrient Initiative. The funders had no role in study design, data collection and analysis, data interpretation, decision to publish, or preparation of the manuscript.

Author disclosures: The authors report no conflicts of interest.

PHN is a member of the Journal's Editorial Board.

Supplemental Figure 1 and Supplemental Tables 1 and 2 are available from the "Supplementary data" link in the online posting of the article and from the same link in the online table of contents at <https://academic.oup.com/jn/>.

Address correspondence to PHN (e-mail: PH.Nguyen@cgjar.org).

Abbreviations used: BMIZ, body-mass-index z -score; FA, folic acid; FSIQ, full-scale intelligence quotient; HAZ, height-for-age z -score; HOME, Home Observation for Measurement of the Environment; IFA, iron and folic acid; LMIC, low- and middle-income countries; MM, multiple micronutrients; PRI, Perceptual Reasoning Index; PSI, Processing Speed Index; RCT, randomized placebo-controlled trial; SDQ, Strengths and Difficulties Questionnaire; SES, socioeconomic status; SGA, small for gestational age; VCI, Verbal Comprehension Index; WISC-IV, Wechsler Intelligence Scale for Children—Fourth Edition; WMI, Working Memory Index.

debriefing. Weekly field-based supervision was used for quality control of the assessment. Refresher training sessions were conducted every 6 mo after the initial training to ensure testing was conducted in a standardized manner.

Child mental health was assessed using the Strengths and Difficulties Questionnaire (SDQ) (39), which was administered to the child's primary caregivers. The SDQ consists of 25 core items, each rated as not true (0), somewhat true (1), or certainly true (2). The scores from these items were used to construct 5 subscales (Emotional Symptoms, Conduct Problems, Hyperactivity, Peer Problems, and Prosocial Behavior), each ranging from 0 to 10; the first 4 subscales were summed to generate a total difficulty scale (range from 0 to 40), with higher scores indicating greater mental health concerns. The tool has been validated and widely used to assess emotional and behavioral disorders in children aged 4 to 16 y in several countries including Vietnam (40, 41).

Exposure variables

Child anthropometry was collected at various ages (birth, 6 mo, 1, 2, and 6–7 y) by trained field staff using standard methods (42). Child weight was measured using electronic weighing scales precise to 10 g, and child length/height was measured with collapsible length boards, which were precise to 1 mm. The average of duplicate measurements of height and weight were then converted into HAZs and BMIZs according to 2006 WHO child growth standards (43).

Because we aimed to test whether growth during the first 1000 d or beyond is important, we used 1) child attained size at age 2 y (HAZ and BMIZ) as a summary indicator of child growth during the first 1000 d, which includes growth in utero and the first 2 y of life, and 2) conditional measures of linear and ponderal growth from 2 y to 6–7 y as the key exposure variables. Because linear growth and weight gain are highly correlated and we have repeated measures over time for each child, we developed the child conditional growth measures to produce uncorrelated height and weight gain for the 2 to 6–7 y window. Conditional relative height/weight gain between 2 and 7 y was computed as the standardized residuals from linear regressions of anthropometric measures at present (i.e., 7 y) on all prior measures (i.e., at 2 y). The conditional height gain was the present height accounting for height, and weight at 2 y. Conditional relative weight gain was the present weight accounting for present length and all previous weight and length measures. Because the conditional relative height/weight gain is the height/weight deviation from the child's previous growth trajectory, it represents the relative speed of length/weight gains during an interval of childhood. This method has been widely used in previous studies (20, 22, 39, 44) and allows us to compare the influence of linear growth and relative weight gain on outcomes. In supplemental analysis, we also examined models that partitioned growth during the first 1000 d into prenatal and postnatal periods by including measures of birth size (birth length *z*-score; birth weight *z*-score) and conditional length/weight gain for 0–2 y and 2–7 y.

Confounders

Confounding variables were considered at child, caregiving, maternal, and environment levels, building from prior conceptual models (6, 19). Child-level variables included child age, sex, and birth outcomes [preterm birth (<37 wk of gestation), low birth weight (<2500 g), and small for gestational age (SGA), which was defined as a birth weight <10th percentile for gestational age (45)]. Child morbidity was collected through maternal recall of symptoms (fever, cough, flu, diarrhea) in the 2 wk prior to the survey (46, 47). Caregiving-level variables included child feeding practices such as breastfeeding and complementary feeding. Child dietary diversity was assessed as number of food groups consumed at ages 2 y and 6–7 y using the standard WHO guidelines (48), based on the maternal recall of all foods and liquids given to children in the last 24 h prior to the survey. Maternal-level variables included education, nutritional status, depressive symptoms, and intellectual ability, which were assessed at baseline. Maternal education was categorized into 4 groups: primary school (completed 1–5 y), secondary school (6–9 y), high school (10–12 y), and college or higher. Preconception anemia was defined as hemoglobin (measured

by HemoCue with a finger-prick capillary blood sample) <12 g/L. Maternal depressive symptoms were measured at community health centers by trained psychologists using the Center for Epidemiologic Studies Depression Scale (49), which has been adapted for use in Vietnam (50). Finally, maternal intellectual ability was assessed using the Raven Progressive Matrices IQ Test (51) at the participant's home by well-trained researchers. Environmental-level variables included child learning environment and household socioeconomic status (SES). Child enrollment in daycare centers at the age of 0–36 mo, or in preschools at age 36–72 mo, was used to assess the early childhood learning environment. The quality of the learning environment at home was measured by field researchers using the Infant/Toddler HOME (Home Observation for Measurement of the Environment) Inventory at 1 y, and the Middle Childhood HOME Inventory at 6–7 y (52); the HOME assesses the quality and quantity of the social, emotional, and cognitive support available to a child in the home environment. These instruments were translated to Vietnamese, back-translated, and verified for construct validity during pretesting sessions. Results from our standardization showed high interrater reliability with coefficients >90% for various HOME subscales. Household SES index at baseline was calculated using a principal components analysis of housing quality and ownership of assets, and then categorized into quartiles (53).

Statistical analysis

Normality of the continuous outcome variables was assessed using the Kolmogorov–Smirnov test. Descriptive analyses (means, SDs, percentages) were used to report characteristics of the study population. Multivariable linear regressions were used to assess the association of early childhood growth with intellectual development and mental health at school age (both with overall scores and with each subdomain). Associations with each outcome were examined in 2 models: 1) adjusted only for child age and sex; and 2) fully adjusted for selected child (age, sex), maternal (age, parity, education, depressive symptoms and treatment group), caregiving, and environmental factors (preschool education, home environment at 1 y and 6–7 y, household SES). Results from these models were expressed as differences in outcomes associated with a 1 SD change in child size at 2 y or in the conditional variables. We also examined the interaction between early child growth and child sex, household SES, and home environment on outcomes. All data analyses were performed using Stata version 16 (StataCorp LLC).

Ethical approval

The study was approved by the Ethical Committee of the Institute of Social and Medicine Studies in Vietnam and Emory University's Institutional Review Board, Atlanta, Georgia, USA. The trial was registered in the US Clinical Trials registry (identification number NCT01665378). Written informed consent was obtained from all study participants.

Results

The final study sample included all singleton live births born to women with available data at 6–7 y on offspring anthropometry, intellectual functioning ($n = 1267$), and mental health ($n = 1392$) (Supplemental Figure 1). At 6–7 y, we lost ~3% ($n = 42$) of the cohort due to migration out of the study area ($n = 29$), drop out of study ($n = 5$), or child death ($n = 8$). The most common reason for missing data was that participants did not attend the visits (children were sick, or caregivers were not available to bring children to community health centers during the study time). The final analytic sample was similar on most baseline characteristics to those with missing data (Supplemental Table 1).

Table 1 shows selected maternal characteristics that were measured at the time of recruitment (preconception), child characteristics, and the quality of home environment at ages 1

TABLE 1 Description of study population¹

	Study population <i>n</i> = 1392
Maternal characteristics	
Age, y	25.9 ± 4.3
Education, %	
Primary school	7.5
Middle school	55.3
High school	25.6
College or higher	11.7
Depressive symptoms (CES-D ≥ 10), %	9.2
Maternal IQ, score	86.7 ± 16.9
Child characteristics	
Child age at follow-up, y	6.4 ± 0.4
Female, %	49.5
Gestational age, wk	39.2 ± 2.0
Preterm, %	9.6
Exclusive breastfeeding at 3 mo, %	59.5
Enrolled in preschool during 0 to <36 mo, %	34.9
Enrolled in kindergarten during 36–72 mo, %	99.9
Morbidity in the previous 2 wk (measured at 6–7 y), %	
Fever	12.7
Pneumonia/severe cough	14.6
Flu	13.4
Diarrhea	1.1
Dietary diversity score at 2 y, score	4.7 ± 1.2
Dietary diversity score at 6–7 y, score	5.5 ± 1.5
Household characteristics	
Home environment at 1 y, score	63.3 ± 8.2
Home environment at 6–7 y, score	55.4 ± 13.7

¹Values are means ± SDs or percentages. CES-D, Center for Epidemiologic Studies Depression Scale; IQ, Intelligence Quotient.

and 6–7 y. The mean age at follow-up was 6.4 y, and nearly half of the sample were girls (49.5%). At birth, 10% of children were preterm, 5% were low birthweight, and 1.5% were SGA. The descriptive statistics for the key outcomes and their subscales as well as measures of child attained size and nutritional status are presented in **Table 2**. Mean FSIQ was 88.2 ± 12.2, and mean subdomains of intellectual functioning ranged from 81.7 ± 12.5 for VCI to 101.7 ± 11.6 for WMI. Mean total SDQ was 7.4 ± 3.4, and the mean scores for the different subcomponents were ~1 for emotional symptoms and conduct problems, 1.5 for peer problems, 3.8 for hyperactivity, and 6.7 for prosocial behavior.

HAZ at 2 y was significantly and positively associated with overall intellectual functioning (**Table 3**) as well as the different developmental subdomains at age 6–7 y (**Figure 1**). A 1 SD higher HAZ at 2 y was associated with FSIQ increased by 1.4 points (95% CI: 0.5, 2.2), PRI by 1.3 points (95% CI: 0.3, 2.3), WMI by 1.1 points (95% CI: 0.3, 1.9), and PSI by 1.4 points (95% CI: 0.6, 2.3). Faster height gain between 2 and 7 y was also positively associated with intellectual functioning and remained significant only for total FSIQ ($\beta = 0.9$; 95% CI: 0.02, 1.8) after adjusting for other confounders. No association was observed between child intellectual functioning and BMIZ at 2 y or conditional weight gain between 2 and 7 y. Other factors that were positively associated with FSIQ included maternal education, higher quality of HOME environment at 12 mo, and higher SES. Child feeding variables were not statistically significant, and inclusion of maternal intellectual ability (IQ), which was correlated with maternal education, did not significantly alter findings. There is no evidence of

TABLE 2 Summary statistics of child intellectual functioning, mental health, and nutritional status¹

	Study population <i>n</i> = 1392
Child intellectual functioning at 6–7 y, score	
VCI	81.7 ± 12.5
PRI	93.1 ± 14.5
WMI	101.7 ± 11.6
PSI	89.3 ± 12.3
FSIQ	88.2 ± 12.2
Child mental health at 6–7 y, ² score	
Emotional symptoms	1.1 ± 1.3
Conduct problem	1.1 ± 1.1
Hyperactivity	3.8 ± 1.4
Peer problem	1.5 ± 1.2
Prosocial behavior	6.7 ± 1.9
SDQ score	7.4 ± 3.4
Child size and nutritional status	
At birth	
Low birth weight, %	4.8
SGA, %	15.3
LAZ	−0.30 ± 1.5
WAZ	−0.32 ± 1.6
At 24 mo	
Weight, kg	9.8 ± 1.0
Length, cm	78.0 ± 2.7
HAZ	−1.1 ± 0.9
BMIZ	−0.05 ± 0.8
Stunting, %	16.4
Overweight/obese, %	9.6
At 6–7 y	
Weight, kg	18.8 ± 3.2
Height, cm	113.6 ± 5.3
HAZ	−0.8 ± 0.9
BMIZ	−0.7 ± 1.1
Stunting, %	9.6
Overweight/obese, %	6.8

¹Values are means ± SDs or percentages. BMIZ, body-mass-index for-age z-score; FSIQ, Full-Scale Intelligence Quotient; HAZ, height-for-age z-score; LAZ, length-for-age z-score; PRI, Perceptual Reasoning Index; PSI, Processing Speed Index; SDQ, Strengths and Difficulties Questionnaire; SGA, small for gestational age; VCI, Verbal Comprehension Index; WAZ, weight-for-age z-score; WMI, Working Memory Index.

²SDQ score was calculated from the sum of 4 subscales (Emotional Symptoms, Conduct Problems, Hyperactivity, and Peer Problems); for each subscale and total score, the higher scores indicate greater mental health concerns. For Prosocial Behavior, higher scores indicate more positive behavior.

heterogeneous effects by child sex, household SES, and home environment (data not shown). The additional findings when we divided growth during the first 1000 d into fetal (birth length z-score) and postnatal components showed that conditional measures of height gain from 0 to 2 y had an attenuated coefficient (0.96; 95% CI: 0.10, 1.81) compared with that of HAZ at 2 y (1.36; 95% CI: 0.50, 2.21) on FSIQ (**Supplemental Table 2**).

For child mental health, higher HAZ at 2 y was associated with lower scores for overall mental health concerns ($\beta = -0.24$; 95% CI: −0.47, −0.01) (**Table 2**) and peer problems ($\beta = -0.08$; 95% CI: −0.17, −0.01). Faster height gain between 2 and 7 y was associated with lower scores on the emotional symptoms ($\beta = -0.09$; 95% CI: −0.18, −0.01) (**Figure 2**), signifying a positive association between child growth and mental health. Higher BMIZ at 2 y was associated

TABLE 3 Associations of child growth during the first 1000 d and beyond with child intellectual development and mental health at 6–7 y¹

Outcomes	FSIQ (n = 1267)		SDQ (n = 1392)	
	Model 1 β (95% CI)	Model 2 β (95% CI)	Model 1 β (95% CI)	Model 2 β (95% CI)
HAZ at 2 y	1.87 (1.10, 2.63)	1.36 (0.50, 2.21)	-0.26 (-0.46, -0.05)	-0.23 (-0.46, -0.01)
Conditional relative height gain between 2 and 7 y	1.04 (0.27, 1.81)	0.89 (0.02, 1.75)	-0.24 (-0.44, -0.04)	-0.17 (-0.40, 0.05)
BMIZ at 2 y	0.14 (-0.72, 1.00)	-0.26 (-1.22, 0.69)	0.23 (0.01, 0.46)	0.21 (-0.04, 0.46)
Conditional relative weight gain between 2 and 7 y	-0.13 (-0.80, 0.54)	-0.28 (-1.04, 0.48)	-0.07 (-0.25, 0.11)	-0.11 (-0.31, 0.09)

¹Values are means ± SDs or percentages. SDQ score was calculated from the sum of 4 subscales (Emotional Symptoms, Conduct Problems, Hyperactivity, and Peer Problems); for each subscale and total score, the higher scores indicate greater mental health concerns. Model 1 adjusted for child age and sex; model 2 adjusted for maternal (age, parity, and education) and child factors (age, sex, and preschool education), home environment at 1 y and 6–7 y, household socioeconomic status, and treatment group. BMIZ, body-mass-index for-age z-score; FSIQ, Full-Scale Intellectual Quotient; HAZ, height-for-age z-score; SDQ, Strengths and Difficulties Questionnaire.

with higher conduct and peer problems, but these associations were marginally statistically significant after adjusting for confounding variables ($P = 0.08$). Conditional weight gain between 2 and 7 y was not associated with mental health. Other factors that were positively associated with better mental health included being a girl and higher home environment scores at 6–7 y (data not shown).

Discussion

Our findings show the importance of growth both during the first 1000 d and thereafter for optimizing intellectual functioning and mental health in young school-aged children

in Vietnam. HAZ at 2 y was positively associated with total intellectual functioning and its subdomains, and negatively associated with overall mental health concerns and peer problems in children aged 6–7 y. Faster height gain between 2 and 7 y was also associated with higher total intellectual functioning and fewer emotional issues. Although the coefficients for HAZ at 2 y were consistently larger and more precisely estimated than for linear growth for 2–7 y, we cannot conclude that the magnitude of the associations differed significantly because the CIs overlapped substantially. In contrast, both BMIZ at 2 y and conditional weight gain between 2 and 7 y were not associated with intellectual functioning. However, BMIZ at 2 y was marginally associated with higher conduct and peer problems.

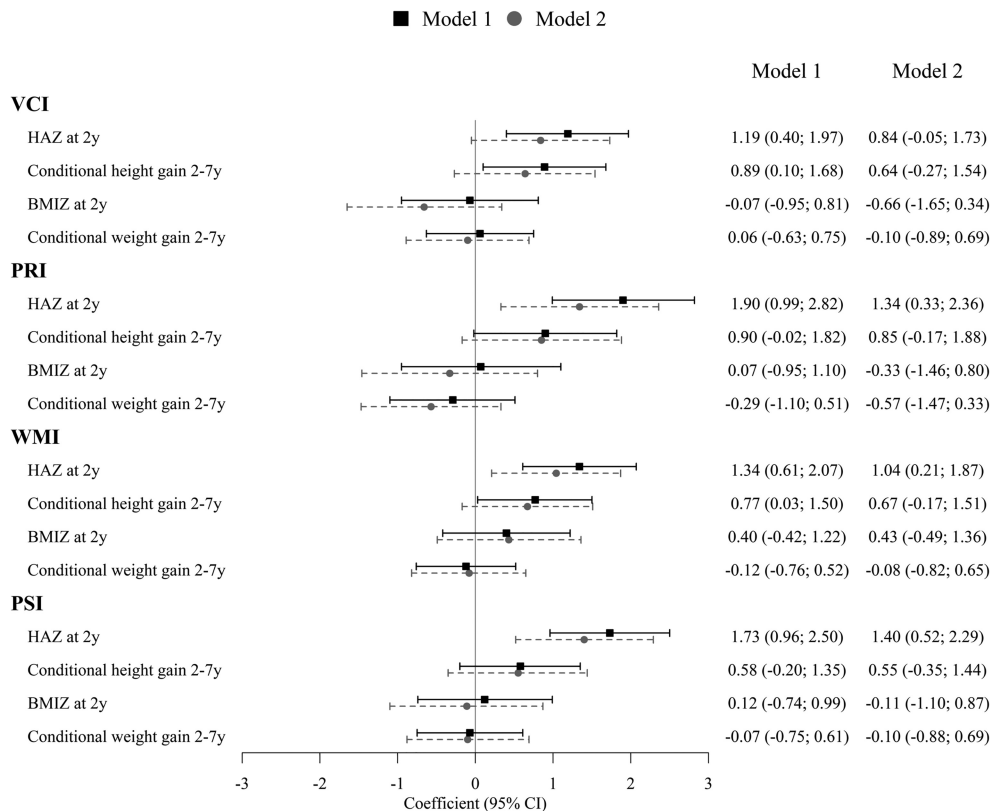


FIGURE 1 Associations of child growth during the first 1000 d and beyond with 4 specific cognitive domains of intellectual functioning at 6–7 y. Model 1 adjusted for child age and sex; model 2 adjusted for maternal (age, parity, and education) and child factors (age, sex, and preschool education), home environment at 1 y and 6–7 y, household socioeconomic status, and treatment group. BMIZ, body-mass-index for-age z-score; HAZ, height-for-age z-score; PRI, Perceptual Reasoning Index; PSI, Processing Speed Index; VCI, Verbal Comprehension Index; WMI, Working Memory Index.

■ Model 1 ● Model 2

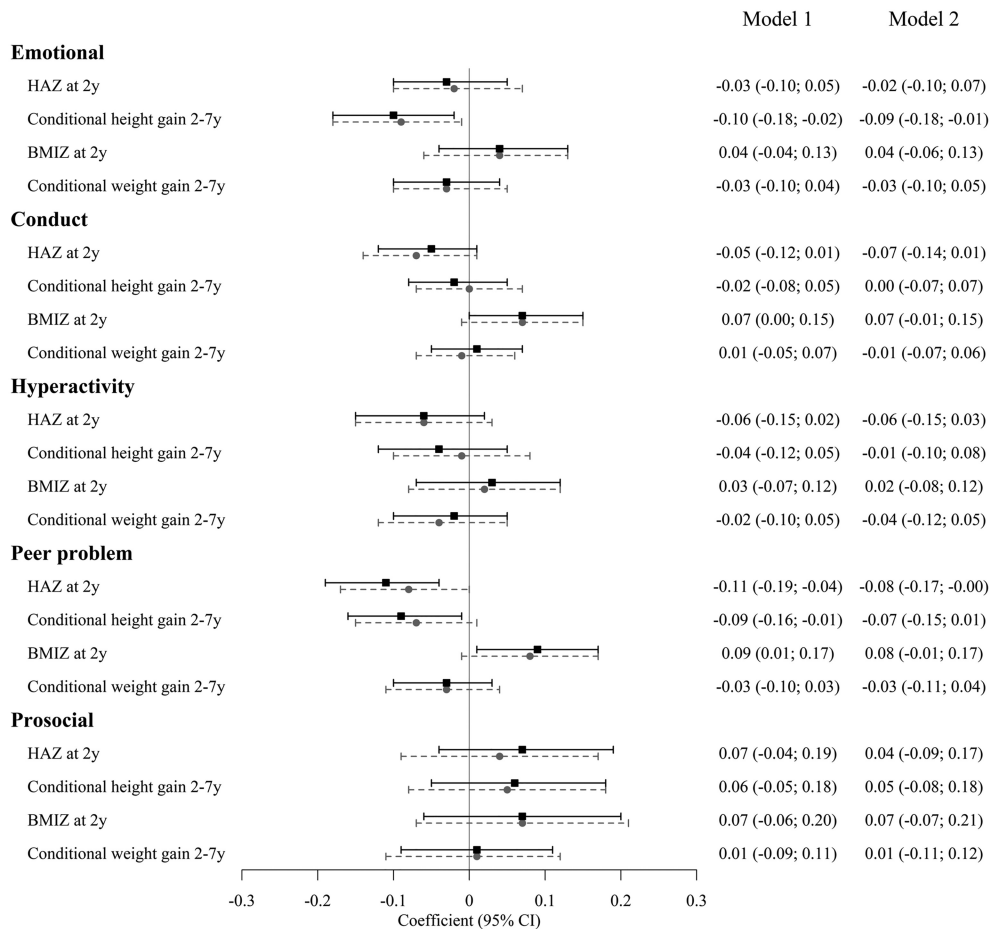


FIGURE 2 Associations of child growth during the first 1000 d and beyond with 5 subscales of mental health at 6–7 y. Model 1 adjusted for child age and sex; model 2 adjusted for maternal (age, parity, and education) and child factors (age, sex, and preschool education), home environment at 1 y and 6–7 y, household socioeconomic status, and treatment group. For each subscale of mental health, higher scores denote more mental health concerns except for prosocial where higher scores indicate more positive behavior. BMIZ, body-mass-index for-age z-score; HAZ, height-for-age z-score.

Our findings confirm previously reported positive associations between child linear growth in the first 1000 d through school age and later intellectual functioning. We used attained child size at 2 y as a summary measure of growth during the first 1000 d (i.e., from conception through age 2 y), and have previously demonstrated that there is linear growth failure both in utero (54), as shown by the negative z-score for birth length (LAZ = -0.32) and postnatally when HAZ continues to decline further to age 2 y (HAZ = -1.1). When we split the first 1000 d into fetal and postnatal components, birth length z-score was not associated with FSIQ but conditional height gain from 0 to 2 y remained significant, although it had an attenuated coefficient when compared with that of HAZ at 2 y. Some studies, however, have shown stronger results for growth in the first 2 y when compared with later growth up to early school age. In a Filipino cohort, increases in cognitive ability were larger for changes in HAZ from 6 to 24 mo than from 2 to 11 y (21). In Thailand, growth up to 1 y of age but not from 1 to 9 y was associated with intellectual functioning at age 9 y (24). Finally, findings from Guatemala showed that nutritional supplementation during the first 1000 d but not later increased years of schooling, scores on reading comprehension, and IQ during adulthood, 25 y after the intervention ended (55). However, our findings suggest that

growth beyond 2 y up to early school age is also important for intellectual functioning. Several reports from the Young Lives study (25, 26, 28, 29), which was conducted in Ethiopia, India, Peru, and Vietnam, also found similar associations. Both HAZ at ~1 y and conditional growth between ~1 and 8 y were positively associated with mathematics achievement, reading comprehension, and receptive vocabulary (26). Children who recovered in linear growth from age 1 to 8 y also had better outcomes when compared with those who were persistently stunted during this period (24). A limitation of these studies, however, is that the measures for later growth include substantial growth during the first 1000 d because the measure representing the first 1000 d was taken between 6 and 18 mo of life.

Our study contributes to the limited evidence on the importance of child growth during the early years for later mental health. Results from a previous study in Belarus showed that both weight and length gain in infancy were negatively associated with externalizing behaviors and positively associated with prosocial behavior (30). Our findings confirmed that linear growth in the first 1000 d was positively associated with better mental health and fewer peer problems, and provided additional evidence on the associations of higher

linear growth beyond the first 1000 d with fewer emotional issues. We also observed that higher BMIZ at 2 y might be associated with higher conduct and peer problems; these findings are aligned with other research that suggests that higher BMI and child overweight/obesity in school-age children can be associated with psychological and psychosocial effects such as body image disturbances, low self-esteem, impaired social relationships, high levels of internalizing (depression and anxiety), and externalizing behavioral problems (hyperactivity and aggressiveness) (56). However, there are limited data in young children prior to school in LMIC, and further research is needed to better understand underlying drivers for these associations. Given the emerging double burden of malnutrition in many LMIC that have undergone a nutrition transition (16, 36, 57), including Vietnam, optimizing targeted interventions that reduce the burden of child undernutrition yet prevent overweight/obesity might also help to improve child mental health.

A few methodological limitations are noted in this study. Although we adjusted for a wide range of maternal and child characteristics, residual confounding by genetic and environmental factors cannot be excluded. We had data on when children started daycare and the total time they spent in daycare, but lacked data on the quality of the early childhood learning environment in daycare settings and/or preschool. Child feeding was assessed by a single point 24-h dietary recall, which could be unrepresentative of overall dietary exposure. Loss to follow-up due to migration or lack of interest could have also caused nonresponse bias.

Major strengths of this study include the availability of prospectively collected data from a well-characterized mother-child cohort that spans from preconception, during pregnancy and early childhood in low-resource settings with a high follow-up rate at the age of 6–7 y, combined with comprehensive measures of intellectual functioning and its subdomains, total mental health concerns as well as specific subscales, and the quality of the learning environment during early childhood. All the measurement tools have been validated and well adapted for the local context (38, 40). Our large sample size, high rates of follow-up, and availability of child growth measurements exactly at 2 y, allow us clearly to separate the influence of linear and ponderal growth during the first 1000 d and thereafter on child intellectual functioning and mental health at school age. Our analytical approach using conditional measures of growth also allowed us to avoid collinearity between multiple measurements and separate the roles of linear growth from soft tissue gain (20).

In conclusion, child linear growth, from the first 1000 d through school age, is positively associated with intellectual functioning and mental health of young school-aged children aged 6–7 y. Although early interventions in the first 2 y remain critical, interventions to improve nutritional status should consider various appropriate times during the life course, including preprimary and early primary school-age children. In addition to child-focused interventions, the high prevalence of infants born SGA or preterm suggests a need for earlier maternal-focused interventions as well to address growth faltering in utero. Our findings also suggest a possible association between higher BMI at age 2 y and greater mental health concerns in school-age children at age 6–7 y, which warrants further investigation. These findings are relevant and timely for many LMIC that are experiencing the nutrition transition and need to consider the implications of increases in the prevalence of overweight and obesity during the preschool

years while continuing to address linear growth faltering during early childhood.

Acknowledgments

The authors' responsibilities were as follows—PHN, RM, UR: designed research; PHN, THD, HCN: conducted research; LMT, LQK: analyzed and interpreted data; PHN, MFY, UR: wrote the paper; PHN, MFY, LMT, LQK, THD, HCN, AMD, RM, UR: provided critical revision of the manuscript for important intellectual content; and all authors: read and approved the final manuscript.

References

1. Britto PR, Lye SJ, Proulx K, Yousafzai AK, Matthews SG, Vaivada T, Perez-Escamilla R, Rao N, Ip P, Fernald LCH, et al. Nurturing care: promoting early childhood development. *Lancet* 2017;389(10064):91–102.
2. Black MM, Walker SP, Fernald LCH, Andersen CT, DiGirolamo AM, Lu C, McCoy DC, Fink G, Shawar YR, Shiffman J, et al. Early childhood development coming of age: science through the life course. *Lancet* 2017;389(10064):77–90.
3. WHO. Improving the mental and brain health of children and adolescents [Internet]. 2020 [cited 2021 Jan 3]. Available from: <https://www.who.int/activities/improving-the-mental-and-brain-health-of-children-and-adolescents>.
4. Kieling C, Baker-Henningham H, Belfer M, Conti G, Ertem I, Omigbodun O, Rohde LA, Srinath S, Ulkuer N, Rahman A. Child and adolescent mental health worldwide: evidence for action. *Lancet* 2011;378(9801):1515–25.
5. Walker SP, Wachs TD, Grantham-McGregor S, Black MM, Nelson CA, Huffman SL, Baker-Henningham H, Chang SM, Hamadani JD, Lozoff B, et al. Inequality in early childhood: risk and protective factors for early child development. *Lancet* 2011;378(9799):1325–38.
6. Prado EL, Abbeduto S, Adu-Afaruwah S, Arimond M, Ashorn P, Ashorn U, Bendabenda J, Brown KH, Hess SY, Kortekangas E, et al. Predictors and pathways of language and motor development in four prospective cohorts of young children in Ghana, Malawi, and Burkina Faso. *J Child Psychol Psychiatry* 2017;58(11):1264–75.
7. Grantham-McGregor S, Cheung YB, Cueto S, Glewwe P, Richter L, Strupp B, International Child Development Steering Group. Developmental potential in the first 5 years for children in developing countries. *Lancet* 2007;369(9555):60–70.
8. Prado EL, Abbeduto S, Adu-Afaruwah S, Arimond M, Ashorn P, Ashorn U, Brown KH, Hess SY, Lartey A, Maleta K, et al. Linear growth and child development in Burkina Faso, Ghana, and Malawi. *Pediatrics* 2016;138:e20154698.
9. DiGirolamo AM, Ochaeta L, Flores RMM. Early childhood nutrition and cognitive functioning in childhood and adolescence. *Food Nutr Bull* 2020;41(1 Suppl):S31–40.
10. Sudfeld CR, McCoy DC, Danaei G, Fink G, Ezzati M, Andrews KG, Fawzi WW. Linear growth and child development in low- and middle-income countries: a meta-analysis. *Pediatrics* 2015;135(5):e1266–75.
11. Engle PL, Black MM, Behrman JR, Cabral de Mello M, Gertler PJ, Kapiriri L, Martorell R, Young ME, International Child Development Steering Group. Strategies to avoid the loss of developmental potential in more than 200 million children in the developing world. *Lancet* 2007;369(9557):229–42.
12. Rosales FJ, Reznick JS, Zeisel SH. Understanding the role of nutrition in the brain and behavioral development of toddlers and preschool children: identifying and addressing methodological barriers. *Nutr Neurosci* 2009;12(5):190–202.
13. Jorgenson LA, Sun M, O'Connor M, Georgieff MK. Fetal iron deficiency disrupts the maturation of synaptic function and efficacy in area CA1 of the developing rat hippocampus. *Hippocampus* 2005;15(8):1094–102.
14. Lozoff B. Iron deficiency and child development. *Food Nutr Bull* 2007;28(4 Suppl 4):S560–71.
15. Cusick SE, Georgieff MK. The role of nutrition in brain development: the golden opportunity of the “first 1000 days”. *J Pediatr* 2016;175:16–21.

16. Black RE, Victora CG, Walker SP, Bhutta ZA, Christian P, de Onis M, Ezzati M, Grantham-McGregor S, Katz J, Martorell R, et al. Maternal and child undernutrition and overweight in low-income and middle-income countries. *Lancet* 2013;382(9890):427–51.
17. Alam MA, Richard SA, Fahim SM, Mahfuz M, Nahar B, Das S, Shrestha B, Koshy B, Mduma E, Seidman JC, et al. Impact of early-onset persistent stunting on cognitive development at 5 years of age: results from a multi-country cohort study. *PLoS One* 2020;15(1):e0227839.
18. Engle PL, Fernald LC, Alderman H, Behrman J, O’Gara C, Yousafzai A, de Mello MC, Hidrobo M, Ulkuer N, Ertem I, et al. Strategies for reducing inequalities and improving developmental outcomes for young children in low-income and middle-income countries. *Lancet* 2011;378(9799):1339–53.
19. Walker SP, Wachs TD, Gardner JM, Lozoff B, Wasserman GA, Pollitt E, Carter JA, International Child Development Steering Group. Child development: risk factors for adverse outcomes in developing countries. *Lancet* 2007;369(9556):145–57.
20. Adair LS, Fall CH, Osmond C, Stein AD, Martorell R, Ramirez-Zea M, Sachdev HS, Dahly DL, Bas I, Norris SA, et al. Associations of linear growth and relative weight gain during early life with adult health and human capital in countries of low and middle income: findings from five birth cohort studies. *Lancet* 2013;382(9891):525–34.
21. Cheung YB, Ashorn P. Continuation of linear growth failure and its association with cognitive ability are not dependent on initial length-for-age: a longitudinal study from 6 months to 11 years of age. *Acta Paediatr* 2010;99(11):1719–23.
22. Martorell R, Horta BL, Adair LS, Stein AD, Richter L, Fall CH, Bhargava SK, Biswas SK, Perez L, Barros FC, et al. Weight gain in the first two years of life is an important predictor of schooling outcomes in pooled analyses from five birth cohorts from low- and middle-income countries. *J Nutr* 2010;140:348–54.
23. Li H, DiGirolamo AM, Barnhart HX, Stein AD, Martorell R. Relative importance of birth size and postnatal growth for women’s educational achievement. *Early Hum Dev* 2004;76(1):1–16.
24. Pongcharoen T, Ramakrishnan U, DiGirolamo AM, Winichagoon P, Flores R, Singkhornard J, Martorell R. Influence of prenatal and postnatal growth on intellectual functioning in school-aged children. *Arch Pediatr Adolesc Med* 2012;166:411–16.
25. Crookston BT, Dearden KA, Alder SC, Porucznik CA, Stanford JB, Merrill RM, Dickerson TT, Penny ME. Impact of early and concurrent stunting on cognition. *Maternal Child Nutr* 2011;7(4):397–409.
26. Crookston BT, Schott W, Cueto S, Dearden KA, Engle P, Georgiadis A, Lundeen EA, Penny ME, Stein AD, Behrman JR. Postinfancy growth, schooling, and cognitive achievement: young Lives. *Am J Clin Nutr* 2013;98(6):1555–63.
27. Gandhi M, Ashorn P, Maleta K, Teivaanmaki T, Duan X, Cheung YB. Height gain during early childhood is an important predictor of schooling and mathematics ability outcomes. *Acta Paediatr* 2011;100(8):1113–18.
28. Georgiadis A, Benny L, Crookston BT, Duc LT, Hermida P, Mani S, Woldehanna T, Stein AD, Behrman JR. Growth trajectories from conception through middle childhood and cognitive achievement at age 8 years: evidence from four low- and middle-income countries. *SSM Popul Health* 2016;2:43–54.
29. Georgiadis A, Benny L, Duc LT, Galab S, Reddy P, Woldehanna T. Growth recovery and faltering through early adolescence in low- and middle-income countries: determinants and implications for cognitive development. *Soc Sci Med* 2017;179:81–90.
30. Yang S, Tilling K, Martin R, Davies N, Ben-Shlomo Y, Kramer MS. Prenatal and post-natal growth trajectories and childhood cognitive ability and mental health. *Int J Epidemiol* 2011;40(5):1215–26.
31. Huang C, Martorell R, Ren A, Li Z. Cognition and behavioural development in early childhood: the role of birth weight and postnatal growth. *Int J Epidemiol* 2013;42(1):160–71.
32. Nguyen PH, Lowe AE, Martorell R, Nguyen H, Pham H, Nguyen S, Harding KB, Neufeld LM, Reinhart GA, Ramakrishnan U. Rationale, design, methodology and sample characteristics for the Vietnam pre-conceptual micronutrient supplementation trial (PRECONCEPT): a randomized controlled study. *BMC Public Health* 2012;12(1):898.
33. Nguyen PH, Gonzalez-Casanova I, Young MF, Truong TV, Hoang H, Nguyen H, Nguyen S, DiGirolamo AM, Martorell R, Ramakrishnan U. Preconception micronutrient supplementation with iron and folic acid compared with folic acid alone affects linear growth and fine motor development at 2 years of age: a randomized controlled trial in Vietnam. *J Nutr* 2017;147(8):1593–601.
34. Nguyen PH, Young MF, Tran LM, Khuong LQ, Duong TH, Nguyen HC, Truong TV, DiGirolamo AM, Martorell R, Ramakrishnan U. Preconception micronutrient supplementation positively affects child development at 6 years of age: a randomized controlled trial in Vietnam. *Am J Clin Nutr* 2021;113:1199–208.
35. Wells JC, Sawaya AL, Wibaek R, Mwangome M, Poulas MS, Yajnik CS, Demayo A. The double burden of malnutrition: aetiological pathways and consequences for health. *Lancet* 2020;395(10217):75–88.
36. Popkin BM, Corvalan C, Grummer-Strawn LM. Dynamics of the double burden of malnutrition and the changing nutrition reality. *Lancet* 2020;395(10217):65–74.
37. Wechsler D. Wechsler intelligence scale for children—fourth edition (WISC-IV). San Antonio (TX): The Psychological Corporation; 2003.
38. Dang HM, Weiss B, Pollack A, Nguyen MC. Adaptation of the Wechsler Intelligence Scale for Children-IV (WISC-IV) for Vietnam. *Psychol Stud (Mysore)* 2011;56(4):387–92.
39. Goodman A, Goodman R. Strengths and difficulties questionnaire as a dimensional measure of child mental health. *J Am Acad Child Adolesc Psychiatry* 2009;48(4):400–3.
40. Dang HM, Nguyen H, Weiss B. Incremental validity of the Child Behavior Checklist (CBCL) and the Strengths and Difficulties Questionnaire (SDQ) in Vietnam. *Asian J Psychiatry* 2017;29:96–100.
41. Graham E, Jordan LP. Migrant parents and the psychological well-being of left-behind children in Southeast Asia. *J Marriage Fam* 2011;73(4):763–87.
42. Cogill B. Anthropometric indicators measurement guide. Washington (DC): Food and Nutrition Technical Assistance Project, Academy for Educational Development; 2003.
43. WHO. The WHO child growth standards [Internet]. 2010 [accessed 2020 Dec 10]. Available from: <http://www.who.int/childgrowth/standards/en/>.
44. Li C, Zeng L, Wang D, Allen S, Jaffar S, Zhou J, Chen T, Watson V, Yan H. Growth in early life and physical and intellectual development at school age: a cohort study. *Br J Nutr* 2019;121(8):866–76.
45. Villar J, Cheikh Ismail L, Victora CG, Ohuma EO, Bertino E, Altman DG, Lambert A, Papageorgiou AT, Carvalho M, Jaffer YA, et al. International standards for newborn weight, length, and head circumference by gestational age and sex: the Newborn Cross-Sectional Study of the INTERGROWTH-21st Project. *Lancet* 2014;384(9946):857–68.
46. WHO, UNICEF. Diarrhea: why children are still dying and what can be done. Geneva: World Health Organization; 2009.
47. WHO. Infection prevention and control of epidemic- and pandemic-prone acute respiratory diseases in health care. WHO interim guidelines. Geneva: World Health Organization; 2007.
48. WHO. Indicators for assessing infant and young child feeding practices. Part 2: measurements [Internet]. 2010 [accessed 2020 Dec 10]. Available from: http://whqlibdoc.who.int/publications/2010/9789241599290_eng.pdf.
49. Radloff LS. The CES-D Scale: a self-report depression scale for research in the general population. *Appl Psychol Meas* 1977;1(3):385–401.
50. Nguyen HT, Le AV, Dunne M. Validity and reliability of two instruments measuring adolescent depression and anxiety for use in community-based studies. *Viet J Public Health* 2007;7:25–31.
51. Raven J, Raven J, Court J. Manual for Raven’s progressive matrices and vocabulary scales. Section 4: the advanced progressive matrices. Oxford: Oxford Psychologists Press; 1998.
52. Caldwell B, Bradley R. Home inventory administration manual. Comprehensive edition. Little Rock (AR): Print Design; 2003.
53. Vyas S, Kumaranayake L. Constructing socio-economic status indices: how to use principal components analysis. *Health Policy Plan* 2006;21(6):459–68.
54. Nguyen PH, Addo OY, Young M, Gonzalez-Casanova I, Pham H, Truong TV, Nguyen S, Martorell R, Ramakrishnan U. Patterns of fetal

- growth based on ultrasound measurement and its relationship with small for gestational age at birth in rural Vietnam. *Paediatr Perinat Epidemiol* 2016;30(3):256–66.
55. Maluccio JA, Hodinott J, Behrman JR, Martorell R, Quisumbing AR, Stein AD. The impact of improving nutrition during early childhood on education among Guatemalan adults. *The Economic Journal* 2009;119(537):734–63.
56. Small L, Aplasca A. Child obesity and mental health: a complex interaction. *Child Adolesc Psychiatr Clin N Am* 2016;25(2):269–82.
57. NCD Risk Factor Collaboration. Worldwide trends in body-mass index, underweight, overweight, and obesity from 1975 to 2016: a pooled analysis of 2416 population-based measurement studies in 128.9 million children, adolescents, and adults. *Lancet* 2017;390(10113):2627–42.