



Tehran University of Medical
Sciences Publication
<http://tums.ac.ir>

Iran J Parasitol

Open access Journal at
<http://ijpa.tums.ac.ir>



Iranian Society of Parasitology
<http://isp.tums.ac.ir>

Original Article

Diagnosis of Toxoplasmosis in Ruminants Aborted Fetuses in Northern Iran Using Molecular and Bioassay Techniques

Kaveh Azimi^{1,2,3}, Afsaneh Amouei^{1,3}, Mehdi Sharif^{1,3}, Shahabeddin Sarvi^{1,3}, Nemat Shams⁴, Azadeh Mizani^{1,3}, Seyed Abdollah Hosseini^{1,2,3}, Saeid Salehi⁵, Mohhammad Reza Safari-Kharyeki⁶, Tooran Nayeri Chegeni^{1,2,3}, Zahra Hosseininejad^{1,2,3}, *Ahmad Daryani^{1,3}

1. Toxoplasmosis Research Center, Mazandaran University of Medical Sciences, Sari, Iran
2. Student Research Committee, Mazandaran University of Medical Sciences, Sari, Iran
3. Department of Parasitology, Faculty of Medicine, Mazandaran University of Medical Sciences, Sari, Iran
4. Faculty of Veterinary Medicine, Lorestan University, Kborramabad, Iran
5. Mazandaran Provincial Veterinary Department, Medical Sciences, Sari, Iran
6. Mahdasht Dairy and Meat Company, Panbe Choleh, Sari, Iran

Received 13 Jun 2020
Accepted 10 Sep 2020

Keywords:

Toxoplasma gondii;
Aborted fetuses;
Sheep;
Goats;
Cattle;
Iran

***Correspondence**

Email:
daryanii@yahoo.com

Abstract

Background: *Toxoplasma gondii* is a zoonotic obligatory intracellular protozoan parasite that infects a wide range of warm-blooded species. This study aimed to obtain further information on the role of *T. gondii* infection in ruminant abortion (sheep, goats and cattle) using bioassay and PCR methods in Mazandaran province, northern Iran.

Methods: Overall, 104 aborted fetuses (52 bovine, 48 ovine, 4 caprine) were collected at different stages of gestation during the lambing seasons in various parts of Mazandaran Province from Mar 2016 to May 2017. Brains of 104 aborted fetuses were bioassayed in female BALB/c mice. DNA was extracted from all brain samples using phenol-chloroform-isoamyl Alcohol instructions. RE gene was used for detection all of *T. gondii* DNA by conventional PCR assay.

Results: The results of the bioassayed samples were negative because no tachyzoites or cyst were observed in the peritoneal and brain specimens of the mice. The detection of *T. gondii* DNA was confirmed by observation of a 529 bp band in 15 out of 104 fetuses (14.4%). The highest prevalence rate of *T. gondii* detected from sheep (16.6%) followed by cattle (13.4%) and goats (0%). The highest prevalence of the infection was observed in east area, while the lowest prevalence of the infection was observed in west area.

Conclusion: *T. gondii* infection may partly be responsible for abortion and economic losses in livestock husbandry in this region. Therefore, further additional researches such as genotyping *T. gondii* and designing control strategies for improving management in livestock flocks are necessary.



Introduction

Toxoplasma gondii is a zoonotic obligatory intracellular protozoan parasite that infects a wide range of warm-blooded species (1). Infection usually occurs transplacentally or through ingestion of *T. gondii* oocysts excreted from infected cats or consumption of undercooked meat containing the parasite cysts and drinking water contaminated with *T. gondii* oocysts (2). Thus, the oocysts can act as risk factor for the occurrence of abortions and stillbirths associated with *T. gondii* infection in domestic animals (3). Contaminated animals are usually asymptomatic. However, when infection transplacentally is transmitted from mother to fetus, the protozoan can cause early abortion, stillbirth, fetal mummification, and thus, impose heavy financial burden to animal-husbandry industry.

The accurate diagnosis of abortion is difficult due to the presence of multiple etiological agents and the advanced stages of autolysis in the many fetuses submitted for diagnosis (4). Diagnosis of this parasite is based on molecular detection, bioassay, histopathology and serological examinations. The majority of epidemiological studies dealing with this pathogen in ruminants have been based on serological diagnostic techniques (5, 6). Molecular assays are considered as a specific and sensitive tool used to diagnose small quantities of target DNA. The RE gene because of its high sensitivity and specificity was applied for detection *T. gondii* (7).

Taking these considerations into account, the purpose of this study was to obtain further information on the role of *T. gondii* infection in ruminant abortion (sheep, goats and cattle) using bioassay and PCR methods in Mazandaran province, northern Iran.

Materials and Methods

Study area and sample collection

Mazandaran Province is near the Caspian Sea, in northern region of Iran. The climate is temperature humid with an annual rainfall of 500 mm and an average temperature of 17 °C with moderate summer and winter owing to the proper conditions; in this region of Iran is considered as the most important area for developing of the livestock industry.

In this study, 104 aborted fetuses (52 bovine, 48 ovine, 4 caprine) were collected randomly at different stages of gestation during the lambing seasons in various parts of Mazandaran province from Mar 2016 to May 2017. Each of the samples was submitted to the Mazandaran Provincial Veterinary Department Lab for diagnosis of abortion reasons. A complete necropsy was performed on all submitted fetuses; the skull was also opened under aseptic condition (disinfecting skull surface with 70% ethanol, sterile instruments for cutting, removing tissues, and sterile glass dishes to collect samples) and the brain samples (e.g., cortex, midbrain, medulla, and cerebellum) were subjected for the detection of *T. gondii* using bioassay and PCR tests.

Ethical issues

All investigations reported here were performed in strict accordance with the guidelines approved by the Animal Ethics Committee of our faculty (No. IR.MAZUMS.REC.96.3018).

Laboratory tests

Bioassay

Brains of 104 aborted fetuses were bioassayed in female BALB/c mice in Institute for Experimental Animal Research, Mazandaran University of Medical Science, Sari, Iran. Briefly, 50 g of each brain were homogenized into the blender and incubated with an acid pepsin solution for 1 h at 37 °C, then filtered through two layers of gauze, pelleted by cen-

trifugation for 10 min at 1200 g, the sediment neutralized and suspended in 5–10 mL antibiotic solution (100 international units (IU/ml) penicillin and 745 IU/ml streptomycin). One ml of this homogenate was inoculated subcutaneously into two mice and also some of them was frozen and stored at -20 °C for performance of PCR. Inoculated mice were followed for 60 d (8, 9). Meanwhile each mouse died, its perituan fluid and brain tissue were examined for detection of tachyzoite and tissue cyst by direct smear and Giemsa staining method. Finally, 60 d after inoculation, all alive mice were also killed and their brains examined for tachyzoite and tissue cyst (9).

DNA extraction and molecular assay

DNA extraction was performed on all brain tissue samples (n=104) collected from aborted fetuses and brains of inoculated mice. For both types of tissues, we used the same protocol (10). Briefly, 80–100 µl homogenized brain samples was transferred to a 2 mL eppendorf tube and were added 800 of DNA digestion buffer (50 mM Tris-HCL, pH8.0; 25 mM EDTA and 400 mM NaCl), 100 µl 10% SDS, 30 µl proteinase K (20 µg/µl) (Fermentas, Hanover, MD, USA) then were vortexed. Suspension was incubated at 55 °C until the tissue was completely lysed (3 h). After that, 300 µl of 6 M NaCl was added to the suspension to precipitate the proteins and cellular debris and kept at 4 °C (15 min). Centrifugation was done at 13,000 g for 15 min, then 500 µl of the supernatant was transferred to a new Eppendorf tube and was added an equal volume of phenol–chloroform–isoamyl alcohol (25:24:1). Following this step, DNA was precipitated in 100 µl sodium acetate and 800 µl cold 100% ethanol and was placed at -70 °C (60 min). Following centrifugation at 13,000 g for 5 min, the columns were then washed twice with 70% ethanol. Finally, the pellet was dried and solubilized in 50 µl TE buffer (10 mM Tris-HCL, 1mM EDTA). Its concentration was estimated by UV spectrophotometric

absorbance at 280/260 nm and stored at -20 °C prior to PCR analysis.

The target gene for PCR method was a repetitive 529 bp DNA sequence (Gene RE). Nucleotide sequences of the primers used to detect *T. gondii* are TOX4; (CGCTG-CAGGGAGGAAGACGAAAGTTG) and TOX5; (CGCTGCAGACACAGTG-CATCTGGATT). DNA fragments of RE gene were amplified by PCR at a final volume of 25 µl, containing 12.5 µl of commercial premix (Ampliqon, Denmark), 1 µl of total DNA, 0.6 µl of each primer (10 pmol/µl) (Bioneer, Korea) and 10.3 µl of PCR H₂O. The reaction mixtures carried out in thermal cycler (BioRad C1000, USA) under the following condition: at 93 °C for five min as initial denaturation followed by 35 cycles at 93 °C for 30 sec as denaturation, 55 °C for 30 sec as annealing, 72 °C for 30 sec as extension, followed by a final extension at 72 °C for five minutes. For each reaction, a negative control (1 µl DDW instead of DNA) and a positive control (*T. gondii* DNA, Accession No: KT715444) were also used. Electrophoretic analysis of the amplified products was performed on a 1.5% agarose gel stained with safe stain under Ultraviolet light (7).

Results

Overall, 104 brain samples were collected from aborted fetuses including 52 cattle, 48 sheep, and 4 goats and from herbs in northern Iran. The mean of age aborted fetuses was 5.1 ± 2.03 months in cattle, 3.3 ± 0.99 in sheep and 3.1 ± 1.03 in goat.

All 208 mice inoculated with brain tissues remained asymptomatic, and tissue cysts were not found in their brains by microscopic observation when euthanized at the termination of experiment.

The detection of *T. gondii* DNA was confirmed by observation of a 529 bp band in 1.5% electrophoresis gel in 15 out of 104 fetuses (14.4%) (Fig. 1).

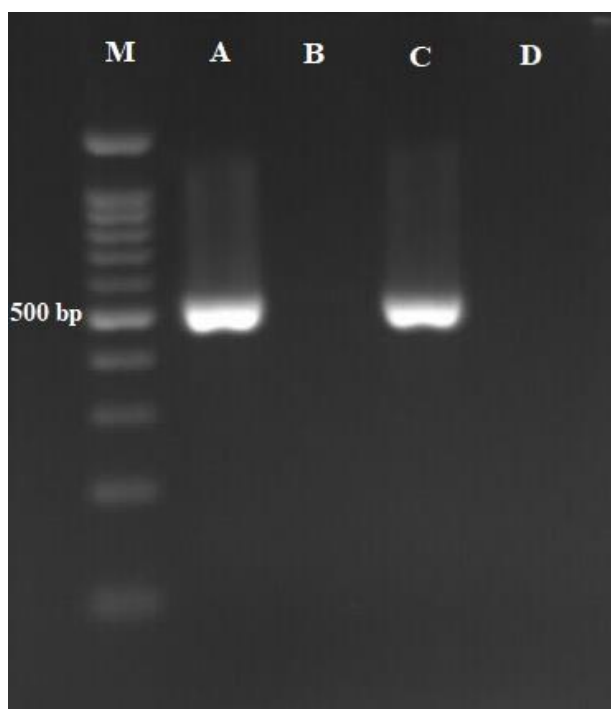


Fig. 1: Representative Lanes for *T. gondii*. Lane M, 100 bp DNA marker (GeneDirex, Cat.No DMoo3); Lane A, Positive control; Lane B, Negative control; Lane C, Positive sample; Lane D, Negative sample

The molecular prevalence rate of *T. gondii* in sheep (16.6%) was higher than in cattle (13.4%) (Table 1). The highest prevalence of the infection in sheep and cattle was observed in east area of northern Iran, while the lowest prevalence in sheep and cattle was seen in west area (Table 2).

Table 1: Summary of prevalence of *T. gondii* in aborted fetuses using PCR from Mazandaran, Iran

<i>Type of ruminants</i>	<i>No. samples</i>	<i>No. (%) positive</i>
Cattle	52	7 (13.4)
Sheep	48	8 (16.6)
Goats	4	0 (0)
Total	104	15 (14.4)

Table 2: Relationship between prevalence *T. gondii* and geographical in aborted fetuses from Mazandaran, Iran

<i>Animals</i>	<i>Type of area</i>						<i>Total</i>	
	East		Center		West			
	No.	No. Pos (%)	No.	No. Pos (%)	No.	No. Pos (%)		
Cattle	16	3 (18.7)	26	3 (11.5)	10	1 (10)	52	7 (13.4)
Sheep	10	2 (20)	30	5 (16.6)	8	1 (12.5)	48	8 (16.6)
Goats	2	0 (0)	2	0 (0)	-	-	4	0 (0)
Total	28	5 (17.8)	59	8 (13.5)	18	2 (11.1)	104	15 (14.4)

Discussion

High fetal mortality rate of ruminants is a major cause of economic losses in farming industry especially in developing countries such as Iran (11). In the past decades, *T. gondii* was not thought to cause significant clinical disease such as fetal mortality in ruminants under field conditions. However today, the congenital toxoplasmosis as a cause of reproductive disorders in sheep and goats (12, 13) has been recognized to occur worldwide. Diagnosis of ruminant's toxoplasmosis is usually based on serological assay, histopathological examination and isolation of parasite via mouse inoculation (14, 15).

Most of epidemiological studies on *T. gondii* have been done based on extensive serological tests in all over the world including Iran. Molecular assays are able to detect small quantities of target DNA and is a specific and sensitive technique used to diagnose parasite-specific DNA such as *T. gondii* (16).

In current study, we used PCR method to amplify a 529 bp fragment of RE gene marker for the diagnosis of *T. gondii* because of its high sensitivity and specificity (7). According to molecular diagnosis, we observed *T. gondii* DNA in 15 brain tissue samples of aborted fetuses (14.4%). In this area, parasite was detected by RE gene, where 18.6% (13/70) of ruminant abortions were found positive (17). The prevalence rate of *T. gondii* in small ruminant aborted fetuses in Iran is variable; 13.5% in Khorasan Razavi, 66% in Qazvin Provinces using PCR method and with aim to amplification of B1 gene marker, and 64% in aborted lambs in Ardebil by the GRA6 gene (18-20).

Our literature review and a comparison of our study with other studies, independently of the used diagnostic technique, shows that the prevalence of *T. gondii* is different in the world. For example, prevalence rate of *T. gondii* in small ruminants' aborted fetuses was 0% in Nigeria (21), 10% in Australia (22), 14% to

18% in USA (23), 23.1% in Spain (24) and 14%–32% in New Zealand (25). The reasons for these differences could be climate and environmental factors and kind of diagnostic methods.

According to our knowledge, the moderate climate is more favorable conditions to the development and maintenance of *T. gondii* oocysts in the environment. Oocysts of this parasite can survive in the environment for several months, depending on moisture and temperature. The viability of *T. gondii* oocysts is reliant on the moisture and temperature of the soil and environment (26). Higher prevalence of ovine toxoplasmosis has been reported in the humid and temperate areas compared to dry areas (27-29). Therefore, in an area, suitable weather conditions such as humidity and temperature are the most important factors in the occurrence of small ruminants' toxoplasmosis.

Another important effective factor on the prevalence of *T. gondii* in ruminant aborted fetuses is used diagnostic method. In diagnosis of livestock aborted fetuses, there are mainly three main methods such as PCR, pathology and bioassay. In the molecular method, several gene markers are used, referred to as B1 and RE (529 bp). RE gene marker is repeated 200 to 300 times in the genome of *T. gondii*, while the B1 marker has 35 folds. Therefore, the use of PCR method with RE gene marker is very sensitive and can have a significant effect on the results of the studies (7, 30).

In our study, the highest prevalence rates of *T. gondii* were observed in the aborted ovine and bovine fetuses, respectively (Table 1). These results are agreement with a study conducted in Italy (31).

The clinical signs of small ruminants' toxoplasmosis in pregnant animals are influenced by the age and immune system status of fetus. During the first trimester of pregnancy in small ruminants, fetal mortality due to various parasitic infections increases when the im-

mune system is relatively immature. In the middle of pregnancy, the infection may lead to the birth of an immature, weakened, or fetal mummified animal, while infection in a post-natal pregnancy may result in the birth of live, clinically normal but infected small ruminants (32-35).

Conclusion

There is widespread exposure of livestock to *T. gondii* in northern Iran. *T. gondii* infection may partly be responsible for abortion and economic losses in livestock husbandry in this region. Therefore, further additional researches such as genotyping of *T. gondii* and designing of control strategies for improving management in livestock flocks are necessary.

Acknowledgements

This work was supported by grant (No. 3088) from the Deputy of Research, Mazandaran University of Medical Sciences, Sari, Iran. We gratefully acknowledge the supporting the Toxoplasmosis Research Center (TRC) at Mazandaran University of Medical Sciences.

Conflict of interest

None of the authors of this paper has a financial or personal relationship with other people or organizations that could inappropriately influence or bias the content of the paper.

References

1. Dubey JP. Toxoplasmosis of animals and humans. CRC press; 2016. (2nd ed) CRC Press, Boca Raton, Florida, pp. 1-313.
2. Heidari H, Gharekhani J, Tavosidana G. Role of toxoplasmosis in abortion of ewes in western Iran: a serological study. *Sci Parasitol*. 2013; 14(2):99-103.
3. Dubey JP, Schares G. Neosporosis in animals—the last five years. *Vet Parasitol*. 2011; 180(1-2):90-108.
4. Tenter AM. *Toxoplasma gondii* in animals used for human consumption. *Mem Inst Oswaldo Cruz*. 2009; 104(2):364-9.
5. Dubey JP. Toxoplasmosis in sheep—the last 20 years. *Vet Parasitol*. 2009; 163(1-2):1-14.
6. Liu Q, Wang Z-D, Huang S-Y, et al. Diagnosis of toxoplasmosis and typing of *Toxoplasma gondii*. *Parasit Vectors*. 2015; 8:292.
7. Homan W, Vercammen M, De Braekeleer J, et al. Identification of a 200-to 300-fold repetitive 529 bp DNA fragment in *Toxoplasma gondii*, and its use for diagnostic and quantitative PCR1. *Int J Parasitol*. 2000; 30(1):69-75.
8. De Sousa S, Ajzenberg D, Canada N, et al. Biologic and molecular characterization of *Toxoplasma gondii* isolates from pigs from Portugal. *Vet Parasitol*. 2006;135(2):133-6.
9. Dubey JP. Refinement of pepsin digestion method for isolation of *Toxoplasma gondii* from infected tissues. *Vet Parasitol*. 1998; 74(1):75-7.
10. Biase FH, Franco MM, Goulart LR, et al. Protocol for extraction of genomic DNA from swine solid tissues. *Genet Mol Biol*. 2002; 25(3):313-5.
11. Keshavarzi H, Sadeghi-Sefidmazgi A, Kristensen AR, et al. Abortion studies in Iranian dairy herds: I. Risk factors for abortion. *Livest Sci*. 2017; 195:45-52.
12. Munday B, Mason R. Toxoplasmosis as a cause of perinatal death in goats. *Aust Vet J*. 1979; 55(10):485-7.
13. Hartley W, Marshall S. Toxoplasmosis as a cause of ovine perinatal mortality. *N Z Vet J*. 1957; 5(4):119-24.
14. Garcia JL, Gennari SM, Machado RZ, et al. *Toxoplasma gondii*. detection by mouse bioassay, histopathology, and polymerase chain reaction in tissues from experimentally infected pigs. *Exp Parasitol*. 2006; 113(4):267-71.
15. da Silva AV, Langoni H. The detection of *Toxoplasma gondii* by comparing cytology, histopathology, bioassay in mice, and the polymerase chain reaction (PCR). *Vet Parasitol*. 2001; 97(3):191-8.
16. Wastling J, Nicoll S, Buxton D. Comparison of two gene amplification methods for the detection of *Toxoplasma gondii* in experimentally

- infected sheep. J Med Microbiol. 1993; 38(5):360-5.
17. Amouei A, Sharif M, Sarvi S, et al. Aetiology of livestock fetal mortality in Mazandaran province, Iran. PeerJ. 2019;6:e5920.
 18. Rassouli M, Razmi G, Bassami M, et al. Study on ovine abortion associated with *Toxoplasma gondii* in affected herds of Khorasan Razavi Province, Iran based on PCR detection of fetal brains and maternal serology. Parasitology. 2011; 138(6):691-7.
 19. Habibi G, Imani A, Gholami M, et al. Detection and identification of *Toxoplasma gondii* type one infection in sheep aborted fetuses in Qazvin Province of Iran. Iran J Parasitol. 2012; 7(3):64-72.
 20. Shahbazi G, Rad NH, Madani R, et al. *Toxoplasma gondii* in Aborted Fetuses of Sheep in Ardebil Area, North-West of Iran. Iran J Parasitol. 2019; 14(3): 430-435.
 21. Kamani J, Egbu G, Mani A, et al. Survey of *Toxoplasma gondii* DNA in aborted Ovine and Caprine fetuses by nested PCR in Borno state, Nigeria. Vet World. 2010; 3(8):360-3.
 22. Plant J, Beh K, Acland HM. laboratory findings form ovine abortion and perinatal mortality. Aust Vet J. 1972; 48(10):558-61.
 23. Dubey JP, Kirkbride C. Toxoplasmosis and other causes of abortions in sheep from north central United States. J Am Vet Med Assoc. 1990; 196(2):287-90.
 24. Pereira-Bueno J, Quintanilla-Gozalo A, Pérez-Pérez V, et al. Evaluation of ovine abortion associated with *Toxoplasma gondii* in Spain by different diagnostic techniques. Vet Parasitol. 2004; 121(1-2):33-43.
 25. Charleston W. *Toxoplasma* and other protozoan infections of economic importance in New Zealand. N Z J Zool. 1994; 21:67-81.
 26. Lélou M, Villena I, Dardé M-L, et al. Quantitative estimation of the viability of *Toxoplasma gondii* oocysts in soil. Appl Environ Microbiol. 2012; 78(15):5127-32.
 27. Alvarado-Esquivel C, Campillo-Ruiz F, Liesenfeld O. Seroepidemiology of infection with *Toxoplasma gondii* in migrant agricultural workers living in poverty in Durango, Mexico. Parasit Vectors. 2013; 6:113.
 28. Hamidinejat H, Goraninejad S, Ghorbanpoor M, et al. Role of *Toxoplasma gondii* in abortion of ewes in Ahvaz (South-West Iran). Bull Vet Inst Pulawy. 2008; 52(3):369-71.
 29. Andrade MMC, Carneiro M, Medeiros AD, et al. Seroprevalence and risk factors associated with ovine toxoplasmosis in Northeast Brazil. Parasite. 2013; 20:20.
 30. Fallahi S, Kazemi B, Bandehpour M, et al. Comparison of the RE and B1 gene for detection of *Toxoplasma gondii* infection in children with cancer. Parasitol Int. 2014; 63(1): 37-41.
 31. Masala G, Porcu R, Daga C, et al. Detection of pathogens in ovine and caprine abortion samples from Sardinia, Italy, by PCR. J Vet Diagn Invest. 2007; 19(1):96-8.
 32. Buxton D. Protozoan infections (*Toxoplasma gondii*, *Neospora caninum* and *Sarcocystis* spp.) in sheep and goats: recent advances. Vet Res. 1998; 29(3-4):289-310.
 33. Innes EA, Bartley PM, Buxton D, et al. Ovine toxoplasmosis. Parasitology. 2009; 136(14):1887-94.
 34. Scott P, Sargison N, Wilson D. The potential for improving welfare standards and productivity in United Kingdom sheep flocks using veterinary flock health plans. Vet J. 2007; 173(3):522-31.
 35. Danehchin L, Razmi G, Naghibi A. Molecular detection of *Toxoplasma gondii* infection in aborted fetuses in sheep in Khorasan Razavi province, Iran. Iran J Vet Med. 2017; 11(2):147-53.