



HHS Public Access

Author manuscript

Bone Marrow Transplant. Author manuscript; available in PMC 2022 March 01.

Published in final edited form as:

Bone Marrow Transplant. 2021 September ; 56(9): 2108–2117. doi:10.1038/s41409-021-01261-6.

Impact of Depth of Clinical Response on Outcomes of Acute Myeloid Leukemia Patients in First Complete Remission Who Undergo Allogeneic Hematopoietic Cell Transplantation

A full list of authors and affiliations appears at the end of the article.

Abstract

AML patients often undergo allogeneic hematopoietic cell transplantation (alloHCT) in first complete remission (CR). We examined effect of depth of clinical response, including incomplete count recovery (CRi) and/or measurable residual disease (MRD), in patients from the Center for International Blood and Marrow Transplantation Research (CIBMTR) registry. We identified 2492 adult patients (1799 CR and 693 CRi) who underwent alloHCT between January 1, 2007 and December 31, 2015. The primary outcome was overall survival (OS). Multivariable analysis was performed to adjust for patient-, disease-, and transplant-related factors. Baseline characteristics were similar. Patients in CRi compared to those in CR had an increased likelihood of death (HR 1.27; 95% confidence interval 1.13–1.43). Compared to CR, CRi was significantly associated with increased non-relapse mortality (NRM), shorter disease-free survival (DFS), and a trend toward increased relapse. Detectable MRD was associated with shorter OS, shorter DFS, higher NRM, and increased relapse compared to absence of MRD. The deleterious effects of CRi and MRD were independent. In this large CIBMTR cohort, survival outcomes differ among AML patients based on depth of CR and presence of MRD at the time of alloHCT. Further studies should focus on optimizing post-alloHCT outcomes for patients with responses less than CR.

Introduction

Adult acute myeloid leukemia (AML) patients with intermediate or high-risk features often undergo allogeneic hematopoietic cell transplantation (alloHCT) during first complete remission (CR1). Due to competing risks of relapse and non-relapse mortality, most patients with favorable genomic risk stratification do not benefit from alloHCT in CR1.(1, 2) What

Data Sharing:

CIBMTR supports accessibility of research in accord with the National Institutes of Health (NIH) Data Sharing Policy and the National Cancer Institute (NCI) Cancer Moonshot Public Access and Data Sharing Policy. The CIBMTR only releases de-identified datasets that comply with all relevant global regulations regarding privacy and confidentiality.

Conflicts of Interest:

Dr. Rybka: Merck, Seattle Genetics, Spark Therapeutics; Dr. Luger: Biosight, Celgene, Hoffman La Roche, Kura, Onconova, Acceleron, Agios, Daichii-Sankyo, Bristol Myers Squibb, Jazz; Dr. Kansagra: Takeda, Janssen, Pfizer, Karyopharm, Celgene/BMS, Sanofi; Dr. Nishihori: Novartis, Karyopharm; Dr. Bhatt: Agios, Incyte, Takeda, Partner Therapeutics, Omeros, Abbvie, Jazz, Tolero Pharmaceuticals, National Marrow Donor Program, Oncoceutics, Partnership for health analytic research, LLC, Pfizer, CSL Behring; Dr. Strair: Janssen; Dr. Ganguly: Seattle Genetics, Kadmon; Dr. Rizzieri: Amgen, Kite, AROG, Pharmacyclics, Seattle Genetics, Pfizer, Novartis, Sanofi-Aventis, Incyte, Gilead, Jazz, Abbvie, Celltrion/Teva, Mustang, Bayer, Stemline, Celgene; Dr. Grunwald: Incyte, Amgen, Alexion, ARIAD, Abbvie, Astellas, BMS/Celgene, Merck, Pfizer, Premier, Trovogene, Daiichi Sankyo, Cardinal Health, Novartis, Janssen, Genentech/Roche, Forma Therapeutics; Dr. Kharfan-Dabaja: Daiichi Sankyo; Dr. Olsson: AstraZeneca; Dr. Liu: BMS, Karyopharm, Agios

remains less clear is which other patients in morphologic CR derive benefit from the procedure. The 2017 European LeukemiaNet AML guidelines categorize morphologic CR (<5% marrow blasts) according to whether it is accompanied by blood count recovery (CR rather than CRi) or presence of measurable residual disease (MRD).(3)

CRi has been associated with an increased risk of relapse in AML patients receiving chemotherapy in several retrospective analyses,(4, 5) although one study observed pre-HCT blood counts did not affect post-HCT outcomes.(6) The presence of MRD, commonly assessed by multiparameter flow cytometry (MFC) and molecular methods, is generally accepted as leading to increased relapse risk and decreased likelihood of survival regardless of receipt of HCT.(4, 7–10) This information has led some physicians to recommend against HCT given MRD or responses less than CR. Nonetheless, alternatives to HCT are also unsatisfactory in such patients. The graft-versus-leukemia effect of HCT seems beneficial in patients in CR, with or without MRD.(11, 12)

In this analysis, we used data collected through the Center for International Blood and Marrow Transplantation Research (CIBMTR) registry to examine the relative roles of pre-HCT blood counts and presence or absence of MRD in determining post-HCT outcomes.

Methods

Data source

Study data were obtained from the CIBMTR registry, a voluntary network of over 450 blood and marrow transplant centers in the US and around the world. Participating centers contributed transplant-related information to the central data management and statistical centers at the Medical College of Wisconsin in Milwaukee and “Be the Match” in Minneapolis, Minnesota. As mandated for observational research conducted by CIBMTR, this study adhered to federal regulations for the protection of human research subjects. Protected health information was collected and maintained in CIBMTR’s capacity as a Public Health Authority under the HIPAA Privacy Rule.

Patients

Eligible cases were identified from 7 346 adults with AML who underwent first alloHCT from any donor source between January 1, 2007 and December 31, 2015. We excluded patients who at time of transplant were classified as primary induction failure (n=736), CR2 (n=1438), CR3 or beyond (n=124), relapse (n=758), or missing disease status (n=10), leaving a population of 4 280 patients in CR1. We also excluded patients with syngeneic twin donors (n=16), without appropriate data on comprehensive research forms (CRF; n=435), without consent for data analysis (n=45), or from embargoed centers (n=78). We further excluded patients with AML transformed from MDS (n=749) and those with missing or contradictory data (n=465), leaving a population of 2492.

We used standard CRFs for baseline characteristics including blood counts prior to alloHCT. Blood counts and MRD status were defined at the pre-alloHCT patient evaluation. We defined CR as absolute neutrophil count $\geq 1000/\mu\text{l}$ and platelet count $\geq 100\,000/\mu\text{l}$ along with no peripheral blasts and <5% blasts on morphologic assessment of the

bone marrow; patients also needed normal maturation of all cellular components in the bone marrow. CRi was defined as <5% blast percentage in the marrow as in CR, but peripheral blood neutrophils, platelets, or both remained below the above stated levels. MRD was assessed based on answers to qualitative CRF questions that ask if the patient is in molecular, cytogenetic, and/or MFC remission (see Supplemental Material for full operational definition).

Statistical analysis

The primary outcome was overall survival (OS), defined as time from HCT to death due to any cause, and secondary outcomes were non-relapse mortality (NRM), defined as time to death without evidence of relapse, relapse, defined as the reappearance of at least 5% blasts on morphological / cytogenetic / flow / molecular evaluation in bone marrow, blood, or an extramedullary site as per the reporting center, and disease-free survival (DFS), defined as time to relapse or death due to any cause. The Kaplan-Meier method was used to estimate survival and cumulative incidence function was used to estimate relapse and NRM. Multivariable analysis (MVA) was performed using the Cox proportional hazards model to adjust for patient-, disease-, and transplant-related factors. The covariates considered in the Cox models included age at transplant, Karnofsky performance score, transplant comorbidity index (HCT-CI), MRD at time of transplant, white blood count at diagnosis, cytogenetic risk group,⁽¹³⁾ time to achieve first CR, de novo vs. therapy-related AML, number of cycles of induction and consolidation prior to transplant, conditioning intensity (using standard CIBMTR operational definitions), type of donor, and year of transplant. All clinically relevant patient-, disease-, and transplant-related variables were considered in the Cox model, and those that were significant to corresponding outcomes were kept in the final model. Adjusted probabilities of DFS and OS and adjusted cumulative incidence curves of NRM and relapse were generated from final regression models stratified on CR vs. CRi and weighted averages of covariate values using pooled sample proportion as weight function. Interactions between main effect (CR vs. CRi) and all covariates were tested at a significance level of $p=0.01$.

Results

Characteristics of study population

The study population included 2492 patients (CR, $n=1799$; CRi, $n=693$). Patients with CRi were more likely than those with CR to have a Karnofsky score <90 (39% vs. 33%) and an HCT-CI score of 3 or higher (47% vs. 40%), but other demographic variables were similarly distributed (Table 1; Supplementary Table 1). The time to achieve remission, type of pre-transplant therapy, and number of cycles of pre-HCT chemotherapy were similar. Most patients received 7+3 chemotherapy for induction (87.3%). However, positive MRD at the time of HCT was more common in the CRi group (18% vs. 12%, $p<0.001$), as was older age ($p = 0.02$). CR patients were more likely to undergo myeloablative conditioning (62% vs. 53% in the CRi group, $p<0.001$).

Effect of incomplete count recovery on outcomes

Multivariate analysis found CRi was associated with a statistically significant increased risk of death with HR 1.27 (95% CI 1.13–1.44) even after accounting for other associated covariates such as older age, non-favorable cytogenetics, lower Karnofsky score, higher HCT-CI, MRD, and higher WBC count at diagnosis (Table 2; Figure 1). Conditioning intensity was not independently associated with survival, suggesting increasing conditioning intensity may not be sufficient to abrogate the deleterious effects of CRi. Donor type did not differentially affect survival in the CR or CRi groups.

A longer time to achieve CR1 was associated with shorter survival. In the 622 patients who did not achieve CR1 within 8 weeks, the HR for death was 1.32 (95% CI 1.11–1.57) compared to those who achieved CR1 in 4 weeks, suggesting that slower recovery after chemotherapy may identify patients with less responsive disease as has been shown previously.⁽¹⁴⁾ Presence of MRD at time of HCT was also independently associated with a higher HR for death of 1.52 (95% CI 1.31–1.77) compared to absence of MRD (independent of CR vs. CRi status). The adjusted OS probabilities at five years post-HCT, after accounting for factors from the MVA model, are 50% (95% CI 47–52) for patients with CR and 43% (95% CI 39–47) for patients with CRi. The deleterious effect of CRi was also seen with DFS, relapse, and NRM (Table 2; Figure 1; Supplementary Tables 2a, 2b, 3, and 4). Though data regarding peri-transplant infections are limited, it is notable that 12% of CRi patients had an infection requiring continuation of antimicrobial treatment after transplant day 0, compared to 6.7% of CR patients ($p < 0.001$). Although patients who received reduced-intensity or nonmyeloablative conditioning (RIC/NMA) had less NRM in the MVA [HR of 0.73 (95% CI 0.56–0.94)], they also had a statistically significantly higher risk of relapse than those who underwent MAC with TBI [HR 1.69, 95% CI (1.39–2.05)].

Effect of MRD on outcomes, and interaction with CRi

MRD status was available in 2267 (91%) patients who were classified as: CR/MRD- ($n=1450$), CR/MRD+ ($n=214$), CRi/MRD- ($n=477$), and CRi/MRD+ ($n=126$). As expected, presence of MRD was associated with shorter OS, shorter DFS, higher NRM, and increased relapse compared to absence of MRD (Table 3; Figure 2). Notably, the effect of MRD was similar in those in CR and those in CRi and the unfavorable effect of CRi was the same regardless of MRD status. Pairwise interactions between the main effects (CR vs. CRi) and MRD status were not significant at a level of $p < 0.01$, demonstrating independently significant negative effects of CRi and presence of MRD. Older age was associated with a greater likelihood of positive MRD (p -value < 0.001 using Pearson chi-square test).

Discussion

Analysis of this large CIBMTR cohort with 2492 patients demonstrates that survival outcomes differ significantly among AML patients in morphologic CR at the time of alloHCT. In our analysis, patients with CRi or MRD prior to HCT had worse outcomes than those with CR or without MRD, respectively; the negative effects on survival of incomplete count recovery and presence of MRD were independent. Most clinical trial reporting combines the endpoints of CR and CRi, but our analysis suggests that morphologic

CR with fewer than 5% marrow blasts is an inadequate assessment of disease status and that both count recovery and MRD status also need to be considered. DFS was significantly lower in the CRi patients, who also showed a trend toward increased risk of relapse. Data from pediatric AML patients indicate that MRD detected by flow cytometry is more important than morphologic assessments in determining outcomes,(15) and we may reach a point when sensitive methodology such as flow cytometry or molecular analyses take precedence over morphologic evaluation in adult AML patients as well.(16)

In our cohort, CRi was not only associated with lower DFS; patients with CRi also had an increased rate of NRM, meaning that the negative effects of responses less than CR were not solely a sign of persistent disease that was more likely to relapse. The reasons for poorer survival outcomes in CRi patients are not fully elucidated by our dataset. Rate of infection may be higher in patients with incomplete count recovery prior to HCT, since many of those patients would have had a prolonged duration of neutropenia prior to HCT; in fact, CRi patients were significantly more likely to have an infection requiring antimicrobial therapy past transplant day 0 than CR patients. However, infection may not fully explain the increased NRM rate in CRi patients. One study of 459 patients who underwent non-myeloablative HCT indicated that depth of neutrophil nadir in the first 21 days after transplant was associated with higher NRM because of higher rates of GVHD.(17) In our study, due to incomplete information, we could not adequately evaluate the effect of any post-HCT interventions such as maintenance chemotherapy, which are increasingly being employed in high-risk patients.

Our retrospective study used a definition of incomplete count recovery prior to alloHCT as that was directly available in our dataset. Importantly, we found that CRi on the pre-HCT assessment had significant survival implications and thus may be generalizable to the broad population of AML HCT recipients. The completeness of available MRD data was variable though missing data was generally <10%. Additionally, CIBMTR CRFs collect only qualitative data and rely on the transplant centers' testing methodology without centralized confirmation, so it is possible that MRD status would be interpreted and reported in different ways at different centers. Definitions and standards in MRD terminology remain a moving target in the AML field, though most experts would agree that flow cytometric and molecular assessments (at least of *NPM1* and the core-binding factor fusion proteins) are well-validated.(18, 19) We used a binary operational definition of MRD with any detectable disease identified as "positive" (further described in the Supplemental Information); ideally, we would have had more granular information about methodology and cutoffs for positivity at the level of reporting centers.(19) High rates of false positive and false negative results with MRD testing should be taken into account when making decisions about referral to alloHCT.(20) Even given these limitations, the assessment of CR and MRD status utilized in our study (those performed immediately pre-transplant) may be useful in decision-making as well as guidance about treatment options and prognosis at the time of alloHCT.

Overall, AML patients with CRi or those with presence of MRD at the time of the pre-transplant evaluation have inferior outcomes after alloHCT compared to those in CR or those without MRD. Prognostic counseling should be offered to patients so that they are aware of the increased risks of both NRM and relapse following HCT though with limited

other treatment options, alloHCT often remains the best available choice. In the future, inclusion of CRi and MRD status could strengthen prognostic models that evaluate the effect of disease-specific characteristics including cytogenetic risk and CR status on post-HCT outcomes, such as the disease risk index (DRI) or the HCT-composite risk (HCT-CR).^(21, 22)

Strategies to eliminate MRD prior to alloHCT seem appealing, but are unproven since it is unknown whether additional therapy to eliminate MRD can lead to improvement in post-HCT outcomes. Additionally, no drugs in AML have shown the promise of blinatumomab, which is approved for MRD-level disease in acute lymphoblastic leukemia. Further, efficacy of MRD eradication pre-alloHCT is unknown; that is, presence of MRD following chemotherapy may denote more resistant AML, an unfavorable bone marrow microenvironment, or other unknown factor, any of which may predispose to worse post-transplant outcomes even if MRD is temporarily eradicated.

Our data suggest that MAC with TBI is associated with a decreased risk of relapse compared to NMA conditioning for patients with MRD prior to alloHCT, which is consistent with findings from previous retrospective analyses.^(23–25) However, conditioning intensity did not seem to affect outcomes for patients with incomplete count recovery prior to alloHCT. Additionally, CR and CRi prior to HCT appear to define prognostic groups with significantly different outcomes, and these patients should be analyzed separately in future analyses. Further prospective studies should focus on limiting NRM and reducing relapse to optimize post-alloHCT outcomes for AML patients with CRi or MRD.

Supplementary Material

Refer to Web version on PubMed Central for supplementary material.

Authors

Mary-Elizabeth Percival¹, Hai-Lin Wang², Mei-Jie Zhang^{2,3}, Wael Saber², Marcos de Lima⁴, Mark Litzow⁵, Partow Kebriaei⁶, Hisham Abdel-Azim⁷, Kehinde Adekola⁸, Mahmoud Aljurf⁹, Ulrike Bacher¹⁰, Sherif M. Badawy^{11,12}, Amer Beitinjaneh¹³, Nelli Bejanyan¹⁴, Vijaya Bhatt¹⁵, Michael Byrne¹⁶, Jean-Yves Cahn¹⁷, Paul Castillo¹⁸, Nelson Chao¹⁹, Saurabh Chhabra^{2,20}, Edward Copelan²¹, Corey Cutler²², Zachariah DeFilipp²³, Ajoy Dias²⁴, Miguel Angel Diaz²⁵, Elihu Estey²⁶, Nosha Farhadfar²⁷, Haydar A. Frangoul²⁸, César O. Freytes²⁹, Robert Peter Gale³⁰, Siddhartha Ganguly³¹, Lohith Gowda³², Michael Grunwald²¹, Nasheed Hossain³³, Rammurti T. Kamble³⁴, Christopher G. Kanakry³⁵, Ankit Kansagra³⁶, Mohamed A. Kharfan-Dabaja³⁷, Maxwell Krem³⁸, Hillard M. Lazarus³⁹, Jong Wook Lee⁴⁰, Jane L. Liesveld⁴¹, Richard Lin⁴², Hongtao Liu⁴³, Joseph McGuirk⁴⁴, Reinhold Munker⁴⁵, Hemant S. Murthy³⁷, Sunita Nathan⁴⁶, Taiga Nishihori¹⁴, Richard F. Olsson^{47,48}, Neil Palmisiano⁴⁹, Jakob R. Passweg⁵⁰, Tim Prestidge⁵¹, Olov Ringdén⁵², David A. Rizzieri⁵³, Witold B. Rybka⁵⁴, Mary Lynn Savoie⁵⁵, Kirk R. Schultz⁵⁶, Sachiko Seo⁵⁷, Akshay Sharma⁵⁸, Melhem Solh⁵⁹, Roger Strair⁶⁰, Marjolein van der Poel⁶¹, Leo F. Verdonck⁶², Jean A. Yared⁶³, Daniel Weisdorf^{64,65}, Brenda M. Sandmaier⁶⁶

Affiliations

¹University of Washington, Seattle, WA

²CIBMTR® (Center for International Blood and Marrow Transplant Research), Department of Medicine, Medical College of Wisconsin, Milwaukee, WI

³Division of Biostatistics, Institute for Health and Equity, Medical College of Wisconsin, Milwaukee, WI

⁴Department of Medicine, Seidman Cancer Center, University Hospitals Case Medical Center, Cleveland, OH

⁵Division of Hematology and Transplant Center, Mayo Clinic Rochester, Rochester, MN

⁶Department of Stem Cell Transplantation, Division of Cancer Medicine, The University of Texas MD Anderson Cancer Center, Houston, TX

⁷Division of Hematology, Oncology and Blood & Marrow Transplantation, Children's Hospital Los Angeles, University of Southern California Keck School of Medicine, Los Angeles, CA

⁸Division of Hematology/Oncology, Department of Medicine and Robert H. Lurie Comprehensive Cancer, Feinberg School of Medicine, Northwestern University, Chicago, IL

⁹Department of Oncology, King Faisal Specialist Hospital Center & Research, Riyadh, Saudi Arabia

¹⁰Department of Hematology, Inselspital, Bern University Hospital, University of Bern, Switzerland

¹¹Division of Hematology, Oncology and Stem Cell Transplant, Ann & Robert H. Lurie Children's Hospital of Chicago, Chicago, IL

¹²Department of Pediatrics, Northwestern University Feinberg School of Medicine, Chicago, IL

¹³University of Miami, Miami, FL

¹⁴Department of Blood and Marrow Transplant and Cellular Immunotherapy, Moffitt Cancer Center, Tampa, FL

¹⁵The Fred and Pamela Buffett Cancer Center, University of Nebraska Medical Center, Omaha, NE

¹⁶Vanderbilt University Medical Center, Nashville, TN

¹⁷Department of Hematology, CHU Grenoble Alpes, Grenoble, France

¹⁸UF Health Shands Children's Hospital, Gainesville, FL

¹⁹Division of Cell Therapy and Hematology, Department of Medicine, Duke University Medical Center, Durham, NC

- ²⁰Division of Hematology/Oncology, Department of Medicine, Medical College of Wisconsin, Milwaukee, WI
- ²¹Department of Hematologic Oncology and Blood Disorders, Levine Cancer Institute, Atrium Health, Charlotte, NC
- ²²Center for Hematologic Oncology, Dana-Farber Cancer Institute, Boston, MA
- ²³Blood and Marrow Transplant Program, Massachusetts General Hospital, Boston, MA
- ²⁴Beth Israel Deaconess Medical Center, Westwood, KS
- ²⁵Department of Hematology/Oncology, Hospital Infantil Universitario Nino Jesus, Madrid, Spain
- ²⁶MD Anderson Cancer Center, Houston, TX
- ²⁷Division of Hematology/Oncology, University of Florida College of Medicine, Gainesville, FL
- ²⁸The Children's Hospital at TriStar Centennial and Sarah Cannon Research Institute, Nashville, TN
- ²⁹Texas Transplant Institute, San Antonio, TX
- ³⁰Haematology Research Centre, Department of Immunology and Inflammation, Imperial College London, London, UK
- ³¹Division of Hematological Malignancy and Cellular Therapeutics, University of Kansas Health System, Kansas City, KS
- ³²Yale New Haven Hospital, New Haven, CT
- ³³Department of Medicine, Division of Hematology/Oncology, Stem Cell Transplant Program-Loyola University Stritch School of Medicine, Maywood, IL
- ³⁴Division of Hematology and Oncology, Center for Cell and Gene Therapy, Baylor College of Medicine, Houston, TX
- ³⁵Experimental Transplantation and Immunology Branch, Center for Cancer Research, National Cancer Institute, National Institutes of Health, Bethesda, MD
- ³⁶UT Southwestern Medical Center – BMT Program
- ³⁷Division of Hematology-Oncology, Blood and Marrow Transplantation Program, Mayo Clinic, Jacksonville, FL
- ³⁸University of Louisville Hospital/James Brown Cancer Center, Louisville, KY
- ³⁹University Hospitals Cleveland Medical Center, Case Western Reserve University, Cleveland OH
- ⁴⁰Division of Hematology, Seoul St. Mary's Hospital, The Catholic University of Korea, Seoul, South Korea
- ⁴¹Department of Medicine, University of Rochester Medical Center, Rochester, NY

- ⁴²Memorial Sloan Kettering Cancer Center-Adults, New York, NY
- ⁴³University of Chicago Medicine, Chicago, IL
- ⁴⁴University of Kansas, Westwood, KS
- ⁴⁵Markey Cancer Center, University of Kentucky, Lexington, KY
- ⁴⁶Rush University Medical Center, Chicago, IL
- ⁴⁷Department of Laboratory Medicine, Karolinska Institutet, Stockholm, Sweden
- ⁴⁸Centre for Clinical Research Sormland, Uppsala University, Uppsala, Sweden
- ⁴⁹Sidney Kimmel Cancer Center, Thomas Jefferson University, Philadelphia, PA
- ⁵⁰University Hospital Basel, Basel, Switzerland
- ⁵¹Blood and Cancer Centre, Starship Children's Hospital, Auckland, New Zealand
- ⁵²Translational Cell Therapy Goup, CLINTEC (Clinical Science, Intervention and Technology) Karolinska Institutet, Stockholm, Sweden
- ⁵³Division of Hematologic Malignancies and Cellular Therapy, Duke University, Durham, NC
- ⁵⁴Penn State Hershey Medical Center, Hershey, PA
- ⁵⁵Tom Baker Cancer Centre, Calgary, Canada
- ⁵⁶Department of Pediatric Hematology, Oncology and Bone Marrow Transplant, British Columbia's Children's Hospital, The University of British Columbia, Vancouver, BC, Canada
- ⁵⁷Department of Hematology and Oncology, Dokkyo Medical University, Tochigi, Japan
- ⁵⁸Department of Bone Marrow Transplantation and Cellular Therapy, St. Jude Children's Research Hospital, Memphis, TN
- ⁵⁹The Blood and Marrow Transplant Group of Georgia, Northside Hospital, Atlanta, GA
- ⁶⁰Rutgers Cancer Institute of New Jersey, Rutgers University, New Brunswick, NJ
- ⁶¹Maastricht University Medical Centre, Maastricht, The Netherlands
- ⁶²Dept of Hematology/Oncology, Isala Clinic, Zwolle, The Netherlands
- ⁶³Blood & Marrow Transplantation Program, Division of Hematology/Oncology, Department of Medicine, Greenbaum Comprehensive Cancer Center, University of Maryland, Baltimore, MD
- ⁶⁴Division of Hematology, Oncology and Transplantation, Department of Medicine, University of Minnesota, Minneapolis, MN
- ⁶⁵CIBMTR® (Center for International Blood and Marrow Transplant Research), National Marrow Donor Program/Be The Match, Minneapolis, MN

⁶⁶Division of Medical Oncology, University of Washington and Clinical Research Division, Fred Hutchinson Cancer Research Center, Seattle, WA

ACKNOWLEDGEMENTS

The CIBMTR is supported primarily by Public Health Service U24CA076518 from the National Cancer Institute (NCI), the National Heart, Lung and Blood Institute (NHLBI) and the National Institute of Allergy and Infectious Diseases (NIAID); HHS250201700006C from the Health Resources and Services Administration (HRSA); and N00014-20-1-2705 and N00014-20-1-2832 from the Office of Naval Research; Support is also provided by Be the Match Foundation, the Medical College of Wisconsin, the National Marrow Donor Program, and from the following commercial entities: AbbVie; Accenture; Actinium Pharmaceuticals, Inc.; Adaptive Biotechnologies Corporation; Adienne SA; Allovir, Inc.; Amgen, Inc.; Astellas Pharma US; bluebird bio, inc.; Bristol Myers Squibb Co.; CareDx; CSL Behring; CytoSen Therapeutics, Inc.; Daiichi Sankyo Co., Ltd.; Eurofins Viracor; ExcellThera; Fate Therapeutics; Gamida-Cell, Ltd.; Genentech Inc; Gilead; GlaxoSmithKline; Incyte Corporation; Janssen/Johnson & Johnson; Jasper Therapeutics; Jazz Pharmaceuticals, Inc.; Karyopharm Therapeutics; Kiadis Pharma; Kite, a Gilead Company; Kyowa Kirin; Magenta Therapeutics; Medac GmbH; Merck & Co.; Millennium, the Takeda Oncology Co.; Miltenyi Biotec, Inc.; MorphoSys; Novartis Pharmaceuticals Corporation; Omeros Corporation; Oncopeptides, Inc.; Orca Biosystems, Inc.; Pfizer, Inc.; Pharmacyclics, LLC; Sanofi Genzyme; Seagen, Inc.; Stemcyte; Takeda Pharmaceuticals; Tscan; Vertex; Vor Biopharma; Xenikos BV. The views expressed in this article do not reflect the official policy or position of the National Institute of Health, the Department of the Navy, the Department of Defense, Health Resources and Services Administration (HRSA) or any other agency of the U.S. Government.

References

1. Koreth J, Schlenk R, Kopecky KJ, Honda S, Sierra J, Djulbegovic BJ, et al. Allogeneic stem cell transplantation for acute myeloid leukemia in first complete remission: systematic review and meta-analysis of prospective clinical trials. *JAMA*. 2009;301(22):2349–61. [PubMed: 19509382]
2. Appelbaum FR. Indications for allogeneic hematopoietic cell transplantation for acute myeloid leukemia in the genomic era. *Am Soc Clin Oncol Educ Book*. 2014:e327–33. [PubMed: 24857121]
3. Dohner H, Estey E, Grimwade D, Amadori S, Appelbaum FR, Buchner T, et al. Diagnosis and management of AML in adults: 2017 ELN recommendations from an international expert panel. *Blood*. 2017;129(4):424–47. [PubMed: 27895058]
4. Chen X, Xie H, Wood BL, Walter RB, Pagel JM, Becker PS, et al. Relation of clinical response and minimal residual disease and their prognostic impact on outcome in acute myeloid leukemia. *J Clin Oncol*. 2015;33(11):1258–64. [PubMed: 25732155]
5. Walter RB, Kantarjian HM, Huang X, Pierce SA, Sun Z, Gundacker HM, et al. Effect of complete remission and responses less than complete remission on survival in acute myeloid leukemia: a combined Eastern Cooperative Oncology Group, Southwest Oncology Group, and M. D. Anderson Cancer Center Study. *J Clin Oncol*. 2010;28(10):1766–71. [PubMed: 20159819]
6. Vu K, Manjappa S, DiPersio JF, Gao F, Westervelt P, Vij R, et al. Hematologic Recovery after Pretransplant Chemotherapy Does Not Influence Survival after Allogeneic Hematopoietic Cell Transplantation in Acute Myeloid Leukemia Patients. *Biol Blood Marrow Transplant*. 2015;21(8):1425–30. [PubMed: 25840336]
7. Walter RB, Gooley TA, Wood BL, Milano F, Fang M, Sorror ML, et al. Impact of pretransplantation minimal residual disease, as detected by multiparametric flow cytometry, on outcome of myeloablative hematopoietic cell transplantation for acute myeloid leukemia. *J Clin Oncol*. 2011;29(9):1190–7. [PubMed: 21282535]
8. Walter RB, Buckley SA, Pagel JM, Wood BL, Storer BE, Sandmaier BM, et al. Significance of minimal residual disease before myeloablative allogeneic hematopoietic cell transplantation for AML in first and second complete remission. *Blood*. 2013;122(10):1813–21. [PubMed: 23847197]
9. Araki D, Wood BL, Othus M, Radich JP, Halpern AB, Zhou Y, et al. Allogeneic Hematopoietic Cell Transplantation for Acute Myeloid Leukemia: Time to Move Toward a Minimal Residual Disease-Based Definition of Complete Remission? *J Clin Oncol*. 2016;34(4):329–36. [PubMed: 26668349]

10. Othus M, Wood BL, Stirewalt DL, Estey EH, Petersdorf SH, Appelbaum FR, et al. Effect of measurable ('minimal') residual disease (MRD) information on prediction of relapse and survival in adult acute myeloid leukemia. *Leukemia*. 2016;30(10):2080–3. [PubMed: 27133827]
11. Versluis J, Cornelissen JJ. Risks and benefits in a personalized application of allogeneic transplantation in patients with AML in first CR. *Semin Hematol*. 2019;56(2):164–70. [PubMed: 30926093]
12. Versluis J, Kalin B, Zeijlemaker W, Passweg J, Graux C, Manz MG, et al. Graft-Versus-Leukemia Effect of Allogeneic Stem-Cell Transplantation and Minimal Residual Disease in Patients With Acute Myeloid Leukemia in First Complete Remission. *JCO Precision Oncology*. 2017(1):1–13.
13. Slovak ML, Kopecky KJ, Cassileth PA, Harrington DH, Theil KS, Mohamed A, et al. Karyotypic analysis predicts outcome of preremission and postremission therapy in adult acute myeloid leukemia: a Southwest Oncology Group/Eastern Cooperative Oncology Group Study. *Blood*. 2000;96(13):4075–83. [PubMed: 11110676]
14. Estey EH, Shen Y, Thall PF. Effect of time to complete remission on subsequent survival and disease-free survival time in AML, RAEB-t, and RAEB. *Blood*. 2000;95(1):72–7. [PubMed: 10607687]
15. Inaba H, Coustan-Smith E, Cao X, Pounds SB, Shurtleff SA, Wang KY, et al. Comparative analysis of different approaches to measure treatment response in acute myeloid leukemia. *J Clin Oncol*. 2012;30(29):3625–32. [PubMed: 22965955]
16. Zhou Y, Wood BL, Walter RB, Becker PS, Percival ME, Bar M, et al. Is there a need for morphologic exam to detect relapse in AML if multi-parameter flow cytometry is employed? *Leukemia*. 2017;31(11):2536–7. [PubMed: 28819284]
17. Storb R, Gyurkocza B, Storer BE, Maloney DG, Sorrow ML, Mielcarek M, et al. Allogeneic hematopoietic cell transplantation following minimal intensity conditioning: predicting acute graft-versus-host disease and graft-versus-tumor effects. *Biol Blood Marrow Transplant*. 2013;19(5):792–8. [PubMed: 23416851]
18. Jongen-Lavrencic M, Grob T, Hanekamp D, Kavelaars FG, Al Hinai A, Zeilemaker A, et al. Molecular Minimal Residual Disease in Acute Myeloid Leukemia. *N Engl J Med*. 2018;378(13):1189–99. [PubMed: 29601269]
19. Schuurhuis GJ, Heuser M, Freeman S, Bene MC, Buccisano F, Cloos J, et al. Minimal/measurable residual disease in AML: a consensus document from the European LeukemiaNet MRD Working Party. *Blood*. 2018;131(12):1275–91. [PubMed: 29330221]
20. Othus M, Gale RP, Hourigan CS, Walter RB. Statistics and measurable residual disease (MRD) testing: uses and abuses in hematopoietic cell transplantation. *Bone Marrow Transplant*. 2019.
21. Armand P, Kim HT, Logan BR, Wang Z, Alyea EP, Kalaycio ME, et al. Validation and refinement of the Disease Risk Index for allogeneic stem cell transplantation. *Blood*. 2014;123(23):3664–71. [PubMed: 24744269]
22. Kongtim P, Parmar S, Milton DR, Perez JMR, Rondon G, Chen J, et al. Impact of a novel prognostic model, hematopoietic cell transplant-composite risk (HCT-CR), on allogeneic transplant outcomes in patients with acute myeloid leukemia and myelodysplastic syndrome. *Bone Marrow Transplant*. 2019;54(6):839–48. [PubMed: 30258129]
23. Ustun C, Courville EL, DeFor T, Dolan M, Randall N, Yohe S, et al. Myeloablative, but not Reduced-Intensity, Conditioning Overcomes the Negative Effect of Flow-Cytometric Evidence of Leukemia in Acute Myeloid Leukemia. *Biol Blood Marrow Transplant*. 2016;22(4):669–75. [PubMed: 26551635]
24. Gilleece MH, Labopin M, Yakoub-Agha I, Volin L, Socie G, Ljungman P, et al. Measurable residual disease, conditioning regimen intensity, and age predict outcome of allogeneic hematopoietic cell transplantation for acute myeloid leukemia in first remission: A registry analysis of 2292 patients by the Acute Leukemia Working Party European Society of Blood and Marrow Transplantation. *Am J Hematol*. 2018;93(9):1142–52. [PubMed: 29981272]
25. Hourigan CS, Dillon LW, Gui G, Logan BR, Fei M, Ghannam J, et al. Impact of Conditioning Intensity of Allogeneic Transplantation for Acute Myeloid Leukemia With Genomic Evidence of Residual Disease. *J Clin Oncol*. 2020;38(12):1273–83. [PubMed: 31860405]

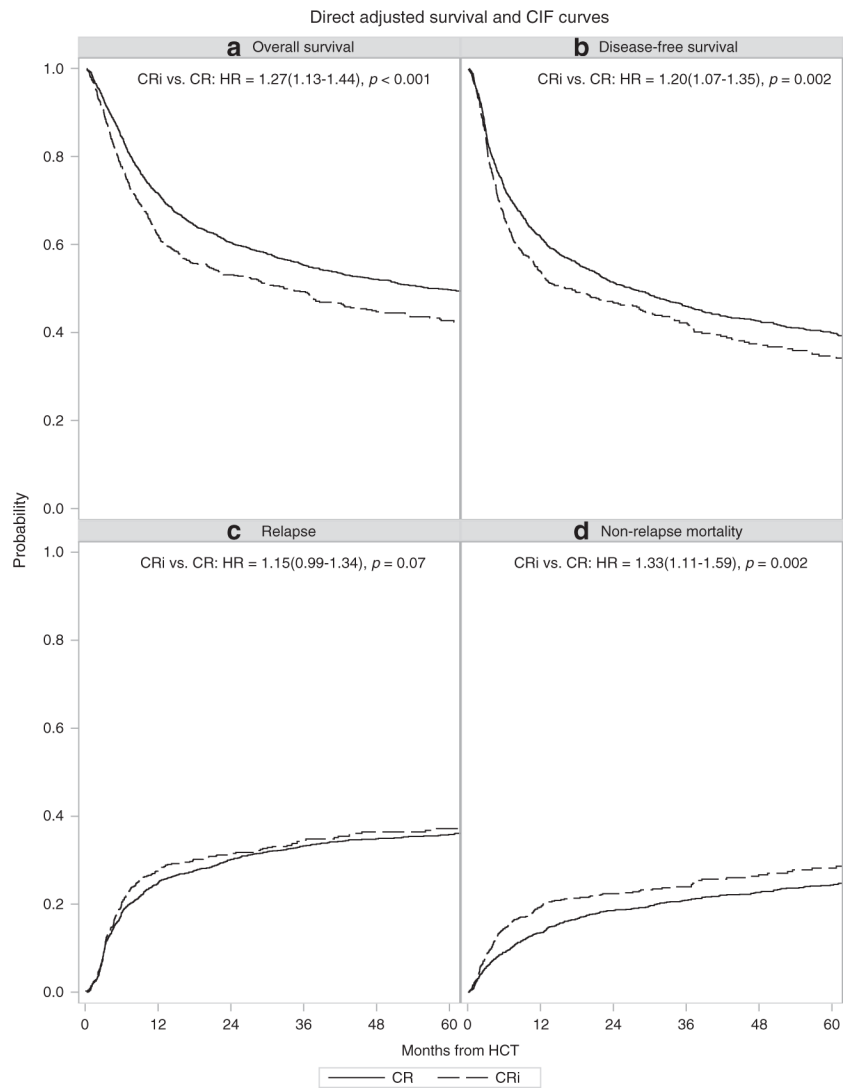


Figure 1. Adjusted survival curves for patients in CR vs. CRi prior to alloHCT.

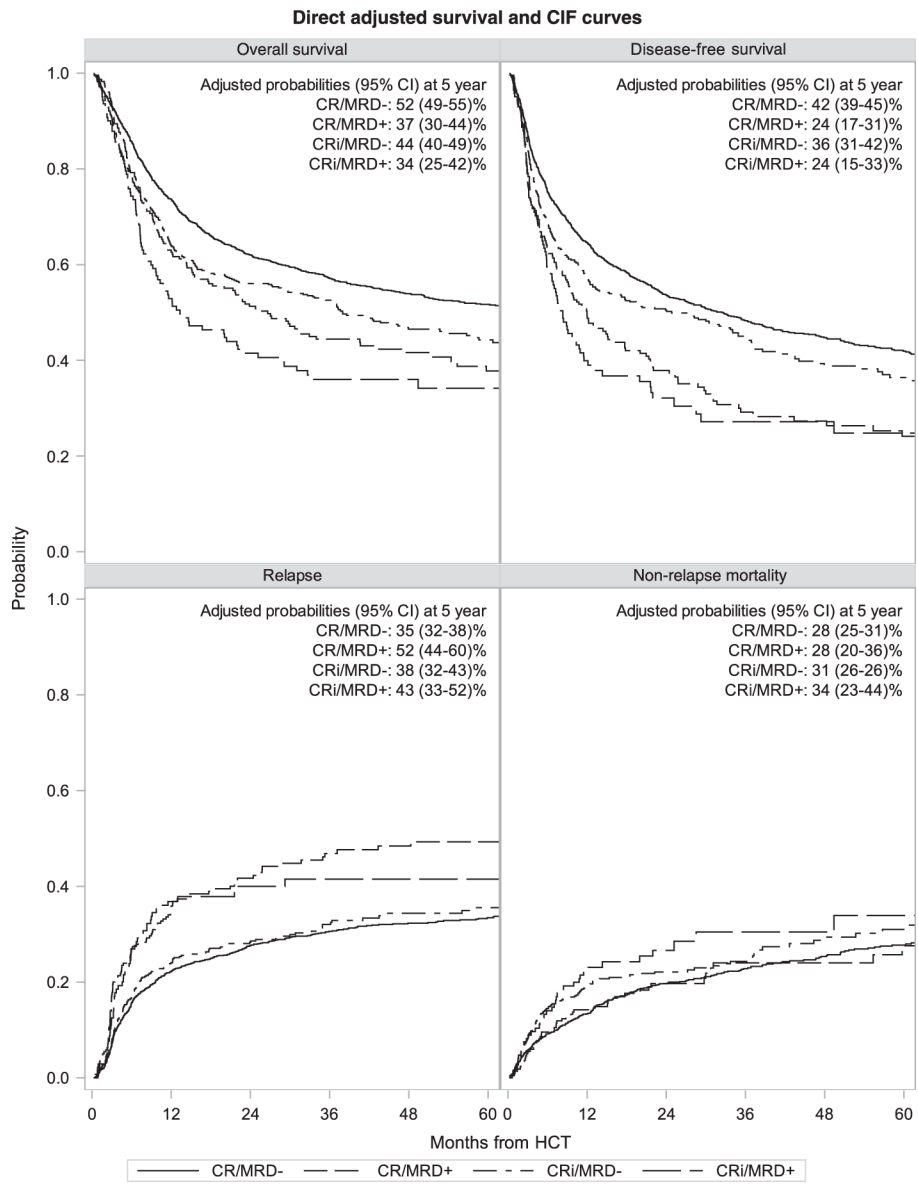


Figure 2. Adjusted survival curves for patients in CR vs. CRi, MRD+ vs. MRD- prior to alloHCT

Table 1:

Baseline characteristics, n (%) unless otherwise specified.

Characteristic	CR	CRi	P Value	Total
No. of patients	1799	693		2492
Age at HCT - median (min-max)	52.1 (18–81.1)	54.3 (18.1–77.7)		52.8 (18–81.1)
Male sex	896 (49.8)	364 (52.5)	0.22 ^a	1260 (50.6)
KPS 90	1212 (67.4)	422 (60.9)	0.007 ^a	1634 (65.6)
HCT-CI 3	724 (40.2)	323 (46.6)	0.004 ^a	1047 (42)
WBC at diagnosis 10×10 ⁹ /L	772 (42.9)	285 (41.1)	0.42 ^a	1057 (42.4)
Therapy-linked AML	175 (9.7)	77 (11.1)	0.30 ^a	252 (10.1)
7+3 for induction	1589 (88.3)	587 (84.7)	0.01 ^a	2176 (87.3)
Total cycles of pre-HCT chemotherapy				
Median	3	2	0.94 ^b	2
25th-75th pctl	2–3	2–4		2–3
Time to achieve CR1 (weeks)				
Median	6	6	0.02 ^b	6
25th-75th pctl	4–9	4–10		4–9
Time from CR1 to HCT (months)				
Median	3	3	0.19 ^b	3
25th-75th pctl	2–4	2–5		2–4
Cytogenetic score			0.62 ^a	
Favorable	62 (3.4)	22 (3.2)		84 (3.4)
Intermediate	1135 (63.1)	421 (60.8)		1556 (62.4)
Poor	538 (29.9)	226 (32.6)		764 (30.7)
Missing	64 (3.6)	24 (3.5)		88 (3.5)
Positive MRD at time of HCT	214 (11.9)	126 (18.2)	< 0.001 ^a	340 (13.6)
Conditioning intensity			< 0.001 ^a	
MAC w/ TBI	416 (23.1)	130 (18.8)		546 (21.9)
MAC w/o TBI	707 (39.3)	240 (34.6)		947 (38)
RIC/NMA	643 (35.7)	303 (43.7)		946 (38)
Missing	33 (1.8)	20 (2.9)		53 (2.1)
Type of donor			< 0.001 ^a	
HLA-identical sibling	558 (31)	156 (22.5)		714 (28.7)
Other related	116 (6.4)	58 (8.4)		174 (7)
Well-matched URD	691 (38.4)	290 (41.8)		981 (39.4)
Other URD	151 (8.4)	65 (9.4)		216 (8.7)
UCB	283 (15.7)	124 (17.9)		407 (16.3)

Characteristic	CR	CRi	P Value	Total
Type of post-HCT planned therapy			0.04 ^a	
No therapy	1551 (86.2)	580 (83.7)		2131 (85.5)
HMA (±other)	138 (7.7)	75 (10.8)		213 (8.5)
Other therapy	110 (6.1)	38 (5.5)		148 (5.9)
Follow-up (months) - median (min-max)	60.72 (4.44–125.76)	50.1 (11.94–122.53)		60.26 (4.44–125.76)

Hypothesis testing:

^aPearson chi-square test

^bKruskal-Wallis test

Abbreviations: complete remission (CR); complete remission with incomplete count recovery (CRi); hematopoietic cell transplantation (HCT); Karnofsky performance score (KPS); hematopoietic cell transplantation-comorbidity index (HCT-CI); white blood cell (WBC); acute myeloid leukemia (AML); first complete remission (CR1); measurable residual disease (MRD); human leukocyte antigen (HLA); unrelated donor (URD); umbilical cord blood (UCB); hypomethylating agent (HMA); myeloablative conditioning (MAC); total body irradiation (TBI); reduced-intensity conditioning (RIC); nonmyeloablative (NMA)

Author Manuscript

Author Manuscript

Author Manuscript

Author Manuscript

Table 2:

Multivariable analysis results. Other significant co-variates were considered in the final Cox model but estimates are not presented here.

Outcomes	HR (95% CI)	p-value
Overall Survival		
CRi vs. CR	1.27 (1.13–1.44)	< 0.001
MRD + vs. MRD –	1.52 (1.31–1.77)	< 0.001
Disease-Free Survival		
CRi vs. CR	1.20 (1.07–1.35)	0.002
MRD + vs. MRD –	1.64 (1.42–1.89)	< 0.001
Relapse		
CRi vs. CR	1.15 (0.99–1.34)	0.07
MRD + vs. MRD–	1.78 (1.48–2.12)	< 0.001
Non-Relapse Mortality		
CRi vs. CR	1.33 (1.11–1.59)	0.002
MRD + vs. MRD –	1.34 (1.06–1.69)	0.01

Abbreviations: hazard ratio (HR); confidence interval (CI); complete remission with incomplete count recovery (CRi); complete remission (CR); measurable residual disease (MRD)

Table 3.

Pairwise comparisons of remission and MRD status. Other significant co-variates were considered in the final Cox model but estimates are not presented here.

	Contrast	HR (95% CI)	p-value
OS	CR/MRD+ vs. CR/MRD-	1.51 (1.25–1.83)	< 0.001
	CRi/MRD+ vs. CRi/MRD-	1.51 (1.18–1.94)	0.001
DFS	CR/MRD+ vs. CR/MRD-	1.66 (1.39–1.98)	< 0.001
	CRi/MRD+ vs. CRi/MRD-	1.62 (1.27–2.05)	< 0.001
Relapse	CR/MRD+ vs. CR/MRD-	1.86 (1.50–2.32)	< 0.001
	CRi/MRD+ vs. CRi/MRD-	1.62 (1.19–2.23)	0.003
NRM	CR/MRD+ vs. CR/MRD-	1.25 (0.92–1.69)	0.15
	CRi/MRD+ vs. CRi/MRD-	1.48 (1.03–2.13)	0.03

Abbreviations: hazard ratio (HR); confidence interval (CI); complete remission with incomplete count recovery (CRi); complete remission (CR); measurable residual disease (MRD); overall survival (OS); disease-free survival (DFS); non-relapse mortality (NRM)