

**OPEN**

Author Correction: Glucose and fatty acid metabolism involved in the protective effect of metformin against ulipristal-induced endometrial changes in rats

Marwa S. Hamza, Eman Ramadan & Salama A. Salama

Correction to: *Scientific Reports* <https://doi.org/10.1038/s41598-021-88346-w>, published online 23 April 2021

In the original version of the Article, Figure 4 was a duplication of Figure 3.

The original Figure 4 and accompanying legend appear below.

The original Article has been corrected.

Published online: 08 September 2021

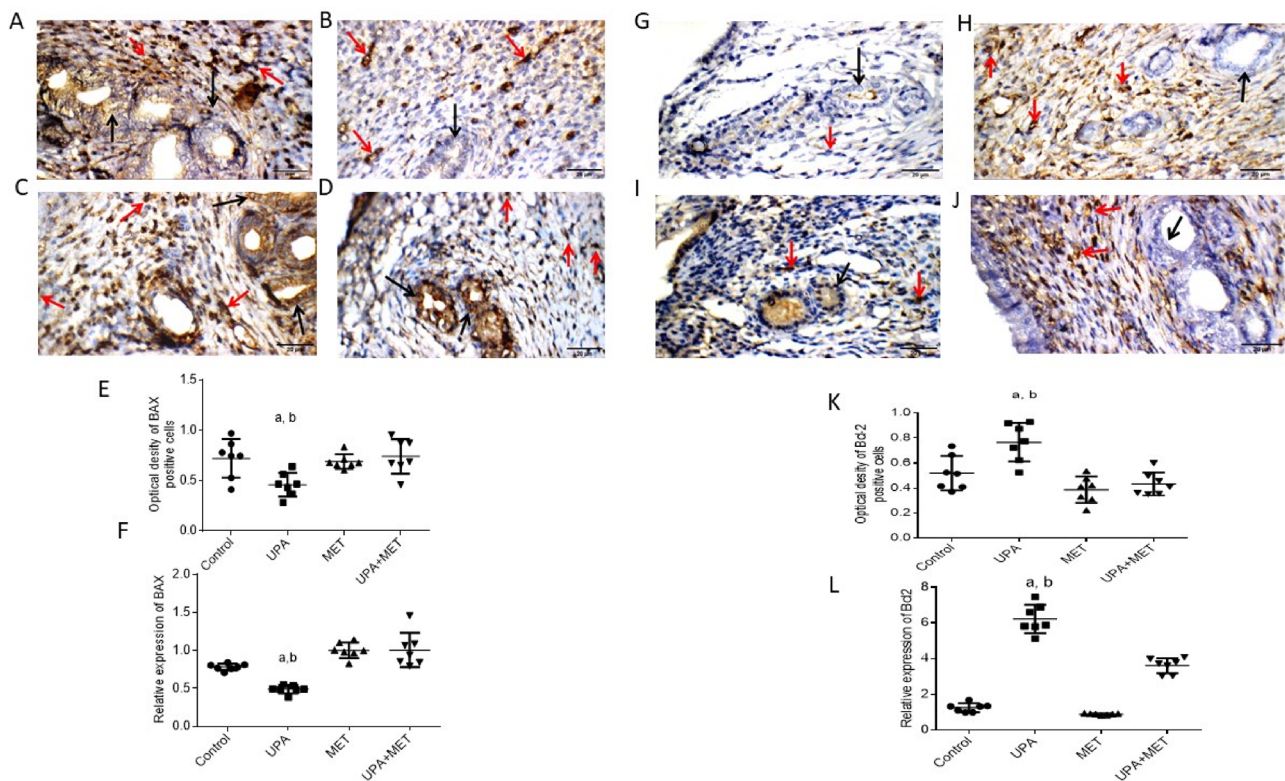


Figure 4. Effect of metformin or/and ulipristal on the expression of the proliferation markers of rats' uteri. (A–D) photomicrographs of uteri shows expression of PCNA (A) Uterine wall in the control group. (B) Uterine wall in ulipristal treated group. (C) Uterine wall in metformin treated group. (D) Uterine wall in the ulipristal and metformin treated group. $\times 400$ magnification (scale bar = 20 μm). (E) Expression quantification of the optical density reactivity of positive cells of PCNA by the ImageJ analysis system. (F) Quantitative RT-PCR analysis of PCNA mRNA expression. (G–J) Photomicrographs of uteri shows expression of Cyclin-D. (G) Uterine wall in the control group. (H) Uterine wall in ulipristal treated group. (I) Uterine wall in metformin treated group. (J) Uterine wall in the ulipristal and metformin treated group. $\times 400$ magnification (scale bar = 20 μm). (K) Expression quantification of the optical density reactivity of positive cells by the ImageJ analysis system. (L) Quantitative RT-PCR analysis of Cyclin D1 mRNA expression, Black arrow refers to reactivity in endometrial glands, red arrows refers to reactivity in stromal cells. Data in figures (E) and (K) is represented by mean \pm SD ($n = 7$). All value of RT-PCR is expressed as the change in cycle threshold (ΔCt). Each dot represents mean of each group ($n = 7$, triplicate for each rat). Negative control (DEPC-treated water) showed no detectable fluorescent signals. a or b, Statistically significant from the control or ulipristal and metformin treated group respectively at $P < 0.05$ using one-way ANOVA followed by Tukey as a post hoc test. UPA ulipristal, MET metformin, UPA + MET co-treatment with ulipristal and metformin.



Open Access This article is licensed under a Creative Commons Attribution 4.0 International License, which permits use, sharing, adaptation, distribution and reproduction in any medium or format, as long as you give appropriate credit to the original author(s) and the source, provide a link to the Creative Commons licence, and indicate if changes were made. The images or other third party material in this article are included in the article's Creative Commons licence, unless indicated otherwise in a credit line to the material. If material is not included in the article's Creative Commons licence and your intended use is not permitted by statutory regulation or exceeds the permitted use, you will need to obtain permission directly from the copyright holder. To view a copy of this licence, visit <http://creativecommons.org/licenses/by/4.0/>.

© The Author(s) 2021