



From Biogas and Hydrogen to Microbial Protein Through Co-Cultivation of Methane and Hydrogen Oxidizing Bacteria

Frederiek-Maarten Kerckhof^{1,2†}, Myrsini Sakarika^{1,2†}, Marie Van Giel¹, Maarten Muys³, Pieter Vermeir⁴, Jo De Vrieze¹, Siegfried E. Vlaeminck^{2,3}, Korneel Rabaey^{1,2} and Nico Boon^{1,2*}

OPEN ACCESS

Edited by:

Corinna Dawid,
Technical University of Munich,
Germany

Reviewed by:

Rashmi Chandra,
University of Waterloo, Canada
Dongliang Hua,
Shandong Academy of Sciences,
China

*Correspondence:

Nico Boon
nico.boon@ugent.be

†These authors have contributed
equally to this work and share first
authorship

Specialty section:

This article was submitted to
Industrial Biotechnology,
a section of the journal
Frontiers in Bioengineering and
Biotechnology

Received: 30 June 2021

Accepted: 13 August 2021

Published: 30 August 2021

Citation:

Kerckhof F-M, Sakarika M, Van Giel M,
Muys M, Vermeir P, De Vrieze J,
Vlaeminck SE, Rabaey K and Boon N
(2021) From Biogas and Hydrogen to
Microbial Protein Through Co-
Cultivation of Methane and Hydrogen
Oxidizing Bacteria.
Front. Bioeng. Biotechnol. 9:733753.
doi: 10.3389/fbioe.2021.733753

¹Center for Microbial Ecology and Technology, Faculty of Bioscience Engineering, Ghent University, Ghent, Belgium, ²Center for Advanced Process Technology for Urban Resource Recovery (CAPTURE), Ghent, Belgium, ³Research Group of Sustainable Energy, Air and Water Technology, Department of Bioscience Engineering, University of Antwerp, Antwerpen, Belgium, ⁴Laboratory of Chemical Analysis, Department of Green Chemistry and Technology, Faculty of Bioscience Engineering, Ghent University, Ghent, Belgium

Increasing efforts are directed towards the development of sustainable alternative protein sources among which microbial protein (MP) is one of the most promising. Especially when waste streams are used as substrates, the case for MP could become environmentally favorable. The risks of using organic waste streams for MP production—the presence of pathogens or toxicants—can be mitigated by their anaerobic digestion and subsequent aerobic assimilation of the (filter-sterilized) biogas. Even though methane and hydrogen oxidizing bacteria (MOB and HOB) have been intensively studied for MP production, the potential benefits of their co-cultivation remain elusive. Here, we isolated a diverse group of novel HOB (that were capable of autotrophic metabolism), and co-cultured them with a defined set of MOB, which could be grown on a mixture of biogas and H₂/O₂. The combination of MOB and HOB, apart from the CH₄ and CO₂ contained in biogas, can also enable the valorization of the CO₂ that results from the oxidation of methane by the MOB. Different MOB and HOB combinations were grown in serum vials to identify the best-performing ones. We observed synergistic effects on growth for several combinations, and in all combinations a co-culture consisting out of both HOB and MOB could be maintained during five days of cultivation. Relative to the axenic growth, five out of the ten co-cultures exhibited 1.1–3.8 times higher protein concentration and two combinations presented 2.4–6.1 times higher essential amino acid content. The MP produced in this study generally contained lower amounts of the essential amino acids histidine, lysine and threonine, compared to tofu and fishmeal. The most promising combination in terms of protein concentration and essential amino acid profile was *Methyloparacoccus murrelli* LMG 27482 with *Cupriavidus necator* LMG 1201. Microbial protein from *M. murrelli* and *C. necator* requires 27–67% less quantity than chicken, whole egg and tofu, while it only requires 15% more quantity than the amino acid-dense soybean to cover the needs of an average adult. In conclusion, while limitations still exist, the co-cultivation of MOB and HOB

creates an alternative route for MP production leveraging safe and sustainably-produced gaseous substrates.

Keywords: single-cell protein (SCP), methanotroph communities, hydrogenotroph, hydrogen oxidizing bacteria, synthetic community, sustainable protein, protein quality

INTRODUCTION

The world population is projected to increase to 9.6–12.3 billion people by 2,100 (Gerland et al., 2014). The parallel rising demand for nutritional food per person (Westhoek et al., 2011), coupled with the Westernization of diets, results in increasing protein consumption (Statovci et al., 2017). Protein is undoubtedly one of the most important constituents in the human and animal diet, and without it, the cells, tissues and the whole body cannot function properly (Wu, 2014). Safeguarding its supply can be a particularly difficult task, since the population increase coupled with the global dietary changes (Delgado, 2003) create a yawning gap between food demand and supply (FAO et al., 2019).

The global consumption of animal products is ever increasing (WHO, 2012), but their production through current agricultural practices results in detrimental environmental effects. For instance, agriculture is notorious for its water consumption and greenhouse gas emissions. About 92% of global freshwater use is attributed to agricultural practices, while nearly 7.1 Gt CO₂-equivalents are globally emitted each year due to food production, representing 14.5% of the overall anthropogenic emissions (Gerber et al., 2013). The production of livestock is responsible for the occupation of about 70% of the available arable land (Hashempour-Baltork et al., 2020). Additionally, fishmeal-fed aquaculture is highly unsustainable since the production of edible fish results in the depletion of wild fish stocks, due to the fishmeal dependency as aquaculture feed (Naylor et al., 2000), although sustainable aquaculture feed alternatives do exist (e.g., Crab et al. (2012)). Coupled with the inefficiency of the production of animal products (Apaiah et al., 2006), these facts point out the need for a so-called “protein transition” (Aiking and de Boer, 2018).

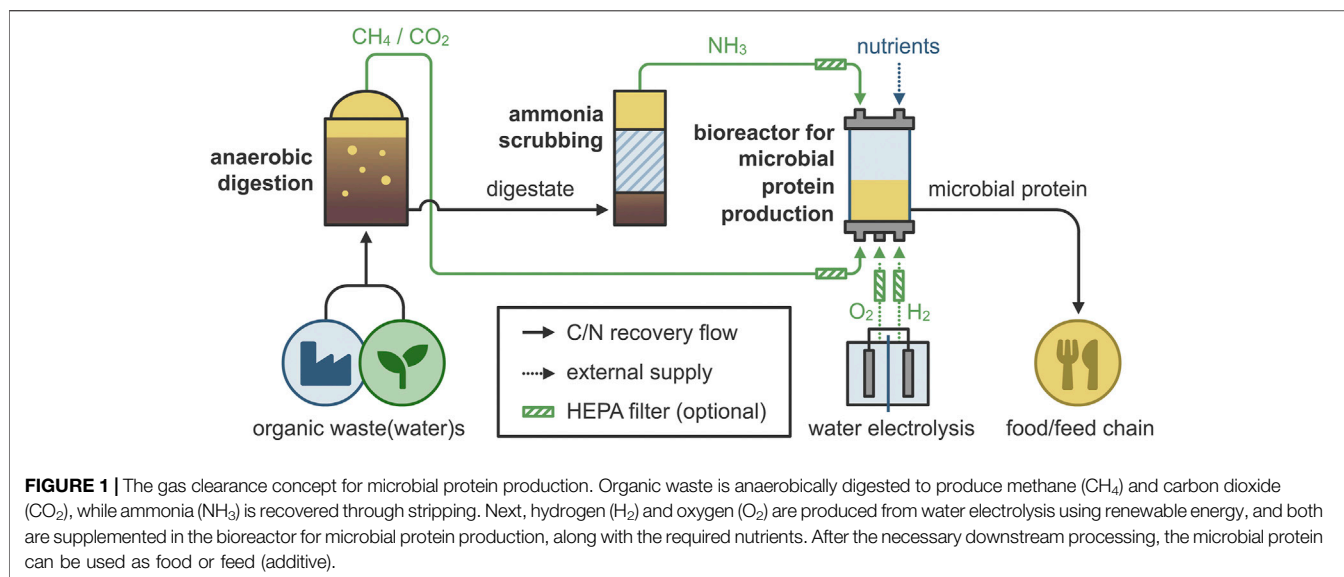
Microbial protein (MP) or single-cell protein (SCP) could alleviate the environmental and socio-economic pressure caused by the limitations of conventional agriculture, because it can provide nutritional protein, based on recovered resources (Matassa et al., 2015). MP is the biomass of microbes, such as fungi, yeasts, microalgae and bacteria, which contain all the essential amino acids (EAA) and can replace conventional protein food/feed sources (Ravindra, 2000). A recent life cycle assessment (LCA) revealed the lower environmental impact of MP compared to the use of soybean meal as a feed ingredient (Spiller et al., 2020). The greatest example of commercial production of MP as a food ingredient is Quorn™ (Marlow Foods, United Kingdom), which consists of mycobacterial biomass (i.e., *Fusarium venenatum*), and it is available in multiple countries worldwide (Wiebe, 2004). Other commercially available examples are feed ingredients produced on natural gas, such as Feedkind® (Calysta, United States) and Uniprotein® (Unibio A/S, Denmark), as well as MP from H₂/CO₂

such as Proton™ (Deep Branch Biotechnology, United Kingdom), while other relevant products emerge (Pander et al., 2020).

There is a broad variety of substrates, metabolisms and microorganisms that can be used for the production of MP, each having its merits (Ritala et al., 2017; Linder, 2019). Methane oxidizing bacteria (MOB), also known as methanotrophs, use methane (CH₄) as carbon and energy source. Hydrogen oxidizing bacteria (HOB), use hydrogen (H₂) as an energy source and can use carbon dioxide (CO₂) as a carbon source. Both MOB and HOB are biotechnologically interesting organisms, able to produce a variety of products, ranging from MP to biopolymers and high value compounds like pigments and ectoine (Davis et al., 1969; Strong et al., 2015).

Even though MOB are already commercially produced as MP (in the Feedkind® and Uniprotein® processes listed above), their production relies on fossil-based resources. The natural gas used in this process can be substituted by biogas, produced via anaerobic digestion of waste streams (Van der Ha et al., 2012; Acosta et al., 2019; Verbeeck et al., 2021). These biogenically sourced CH₄ and CO₂ from secondary materials do not cause food competition since they do not directly depend on the food chain (side streams of the food industry and food waste can be used as feedstocks for anaerobic digestion), and they do not require arable land or potable water (IEA, 2020). The combination of MOB and HOB would enable the valorization of the CH₄ and CO₂ that is contained in raw biogas, as well as the CO₂ that results from the oxidation of CH₄, resulting in the “gas clearance” concept for MP production (Figure 1). The required H₂ and O₂ can be produced *via* water electrolysis using renewable energy (Turner et al., 2008). The advantage of using MOB and HOB is the “barrier” between protein production and waste treatment, as they can utilize gaseous substrates that originate from resource recovery (e.g., biogas, ammonia). This metabolism couples CH₄ utilization and CO₂ mitigation with added-value resource recovery, without requiring any further treatment (AlSayed et al., 2018). In addition, ammonia could be electrochemically extracted (Khoshnevisan et al., 2019) or stripped from the digestate, therefore providing a “clean” nitrogen source for MP production. The extracted ammonia could additionally serve as a means for pH correction (increase), therefore decreasing the costs for chemicals. Due to these reasons, the use of raw or upgraded biogas for the production of MP has recently attracted attention (Acosta et al., 2019; Khoshnevisan et al., 2019).

To our knowledge, only a few HOB strains, belonging mainly to the genera *Cupriavidus* (previously known as *Hydrogenomonas* or *Alcaligenes*), *Azohydromonas*, *Herbaspirillum*, *Pseudomonas*, *Paracoccus*, *Sulfuricurvum*, *Azonexus*, and *Xanthobacter* have been evaluated for MP production (Foster et al., 1969;



Kunasundari et al., 2013; Matassa et al., 2016; Dou et al., 2019; Hu et al., 2020; Alvarado et al., 2021). At the same time, knowledge about autotrophic HOB that can be used to produce MP remains limited, while information on the use of MOB for MP production is restricted to *Methylococcus capsulatus* (Bath). While the combination of MOB and HOB has been demonstrated using enriched mixed cultures (Acosta et al., 2019), there are no reports available on the potential benefits of combining specific strains of MOB and HOB.

In this work, we investigated the co-cultivation of MOB and HOB to identify the best combination for the production of MP (Figure 1). An isolation campaign was set to obtain a diverse group of novel HOB, capable of autotrophic metabolism. A set of MOB strains, that were obtained from a culture collection, were co-cultivated with selected HOB isolates and the best combinations based on the cell density were identified, hypothesizing that the co-culture will perform better towards MP production than the individual pure cultures. The ten best combinations were grown in serum vials to identify the best co-cultures in terms of nutritional characteristics, considering the abundance of each species, total protein content, amino acid composition and improvements compared to the individual pure cultures.

MATERIALS AND METHODS

In order to evaluate MP production by co-cultivation of HOB and MOB, first HOB enrichments were performed (*Enrichment of Hydrogen Oxidizing Bacteria*), followed by isolation of new HOB strains (*Isolation and Selection of Hydrogen Oxidizing Bacteria*). Next, relevant MOB were selected (*Selection and Growth Conditions of Methanotrophic Strains*) and were co-cultivated in 96 well plates with the HOB to screen the promising combinations (*Screening of Co-cultures of Isolated and Selected Strains in Microtiter Plates*). The best performing combinations

in terms of growth were cultivated in serum vials to identify potential benefits from the co-cultivation of HOB and MOB and assess their nutritional properties (*Cultivation of Selected Co-cultures in Serum Vials*). The experimental methodology is illustrated in Figure 2.

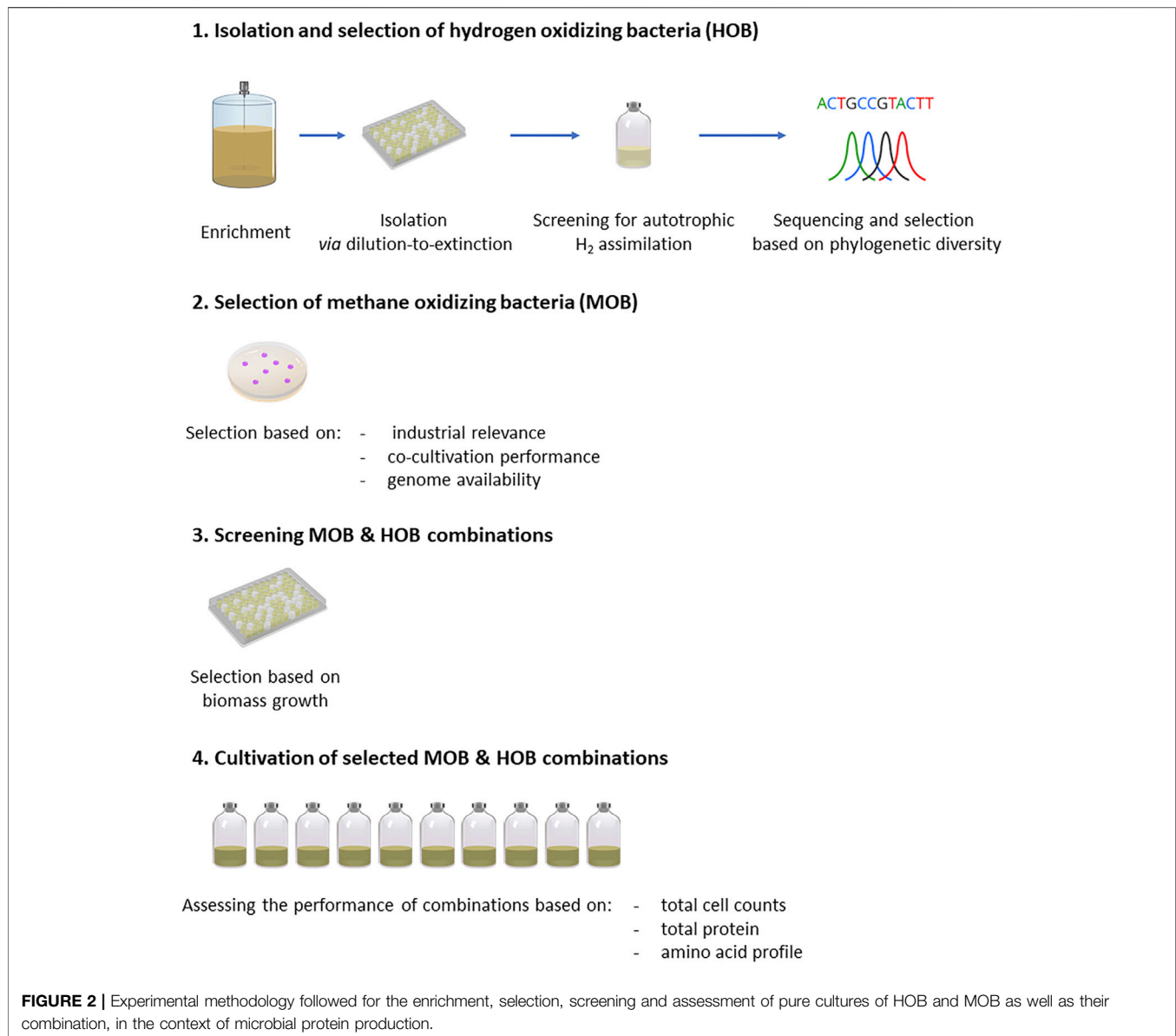
Isolation, Selection, and Cultivation of Strains

Enrichment of Hydrogen Oxidizing Bacteria

To obtain diverse inocula, rich in HOB, enrichments were performed as described in **Supplementary Material, Enrichment of Hydrogen Oxidizing Bacteria**. In brief, soil samples were initially enriched under a sequential batch regime, using medium for chemolithotrophic growth (DSMZ medium 81, **Supplementary Table S1**) while H₂ and O₂ were produced through water electrolysis. After 10 cycles of batch enrichment, the operational mode was changed to continuous, using four 1 L glass reactors with a working volume of 0.4 L, operated at a hydraulic retention time (HRT) of 120 h (Ehsani, 2020). Next, four opaque serum vials with a final volume of 120 ml containing mineral medium were inoculated with the enriched culture to result in 20 ml final volume, with a headspace composition of 2% O₂, 10% H₂, 10% CO₂, and 78% N₂. After an intensive enrichment period of 3 months (**Supplementary Material, Enrichment of Hydrogen Oxidizing Bacteria**) a sample was taken for the isolation campaign.

Isolation and Selection of Hydrogen Oxidizing Bacteria

After the enrichment, an isolation campaign was set to obtain novel HOB strains. Two inocula were used: the enrichment originating from the soil sample (*Enrichment of Hydrogen Oxidizing Bacteria*) and one sample obtained from an autotrophic biocathode (PrévotEAU et al., 2019). The two different samples were diluted to extinction (DTE) in two different 96-well plates as described in Hoefman et al. (2012).



Briefly, the cultures were diluted 10 to 10¹⁰ times in medium for chemolithotrophic growth, in microtiter plates at a final working volume of 0.25 ml. The plates were then placed in an airtight jar, and were incubated under 23% H₂ (Air Liquide, Liège, Belgium), 39% N₂, 19% O₂ and 19% CO₂ (Linde Gas Benelux BV, Schiedam, Netherlands), at 28°C for 3 days. Next, the optical density (OD) at 600 nm was measured using an Infinite[®] M200 Pro microplate reader (Tecan[™], Männedorf, Switzerland) (**Supplementary Material, Optical Density**), and the wells with the highest dilution that presented growth were selected for plating. These were plated on 1, 10, and 100% trypticase soy agar (TSA) and on DSMZ medium 81 plates, at 28°C. The TSA plates were incubated under atmospheric air to verify the ability of the isolated strains to grow heterotrophically, while the DSMZ 81 plates were incubated in a jar containing 23% H₂, 39% N₂, 19% O₂, and 19% CO₂ to verify their ability to grow autotrophically, using H₂ as electron

donor. After 5 days, single colonies were transferred in liquid DSMZ 81 in serum vials containing H₂, N₂, O₂, and CO₂ as described above. The H₂ concentration in the headspace was monitored, to verify the H₂ utilization by the HOB. The cultures that failed to consume the H₂ contained in the headspace were removed from the study, while the cultures that showed hydrogen oxidizing activity were retained. This process yielded 42 isolates.

Selection and Growth Conditions of Methanotrophic Strains

Nine methane oxidizing bacteria (MOB) were obtained from the Belgian Coordinated Collection of Microorganisms (BCCM-LMG; Ghent, Belgium) (**Table 1**). The selection criteria were their industrial relevance (e.g., *Methylococcus capsulatus*), previous data on the co-cultivation performance of *Methylosinus* spp. and *M. methanica* (Kerckhof et al., 2016)

TABLE 1 | Methanotrophic bacteria used in the present study, with collection number and genome accession (if available).

Species	Strain	Assigned name	Genome (IMG status)
<i>Methylomonas koyamae</i>	LMG 26261 (Hoefman R-45378)	MOB1	PRJNA315276 (Permanent draft)
<i>Methylosinus sp.</i>	LMG 26262 (Hoefman R-45379)	MOB2	PRJNA315280 (Permanent draft)
<i>Methylomonas methanica</i>	LMG 26612 (Hoefman R-45363)	MOB3	PRJNA315271 (Permanent draft)
<i>Methylomonas methanica</i>	LMG 26614 (Hoefman R-45371)	MOB4	PRJNA315272 (Permanent draft)
<i>Methylococcus capsulatus</i>	LMG 26900	MOB5	PRJNA21 (Finished)
<i>Methyloparacoccus murrelli</i>	LMG 27482 (Hoefman R-49797)	MOB6	Not available
<i>Methylomonas koyamae</i>	LMG 27769 (Hoefman R-49807)	MOB7	PRJNA315278 (Permanent draft)
<i>Methylocystis hirsuta</i>	LMG 27832 (Hoefman R-43155)	MOB8	PRJNA487728 (Not in IMG or GOLD)
<i>Methylovulum psychotolerans</i>	LMG 29227	MOB9	PRJNA418066 (Permanent draft)

and genome availability (except for MOB 6). Unless in co-cultivation or when stated otherwise, the MOB were grown on nitrate mineral salts medium (NMS (Whittenbury and Wilkinson, 1970), **Supplementary Table S2**) at 28°C under a 50% CH₄ atmosphere (on semisolid media) or a 20% CH₄ atmosphere (liquid media, shaking at 120 rpm). To assess the purity of these obligate methanotrophs, plating on 10% trypticase soy agar (TSA) was performed at 28°C for up to 10 days to assess that no colonies were formed, as well as regular full-length 16S rRNA gene sequencing (**Supplementary Material, DNA Extraction and Sanger Sequencing**).

Screening of Co-Cultures of Isolated and Selected Strains in Microtiter Plates

The 9 MOB and 19 HOB isolates that were selected from the isolation campaign (based upon phylogenetic diversity, *Isolation Campaign*) were combined (one MOB with one HOB) to obtain the best performing combinations in terms of growth. The experiments were performed in 96-well plates, at a final working volume of 0.2 ml. The MOB and HOB pure cultures were diluted in liquid mineral medium, at a final cell density of 10⁶ cells/mL. The medium used during all co-cultivations was DSMZ medium 81 (**Supplementary Table S1**) supplemented with the NMS trace-elements solution with abundant Cu to allow particulate methane mono-oxygenase to be expressed (Semrau et al., 2018). Next, a volume of 0.2 ml was transferred in the respective well for the growth of the individual strains, while for the combinations of one HOB and one MOB, a volume of 0.1 ml and from each strain was used (i.e., to achieve a final volume of 0.2 ml). The plates were placed in a gas-tight jar and flushed with 80:20 v/v H₂/CO₂ mixture. Next, CH₄ and O₂ were added to the headspace to achieve a final headspace composition of 16.5% O₂, 29% H₂, 12.5% CO₂, and 42% CH₄. The initial OD was measured at day 0, and subsequently at days 3, 6, and 10. After OD measurements, the 96-well plates were placed again in the gas-tight jar, and the gases were replenished as described. The best combinations with respect to joint biomass growth were determined through flow cytometry and selective plate counts, in biological duplicates.

Cultivation of Selected Co-Cultures in Serum Vials

The eight best combinations were selected based on the plating of the combinations of the 9 MOB with the 19 HOB. Additionally, *Cupriavidus necator* LMG 1201 (CNEC) and *Xanthobacter*

autotrophicus R-75741 (XAUT) were combined with the best growing MOB, *Methyloparacoccus murrelli* LMG 27482, as established by the results of plating and flow cytometry measurements. *C. necator* is one of the most well-described species for hydrogen-driven MP production (Yu, 2018), whereas we recently identified *X. autotrophicus* as an autotrophic, nitrogen-fixing HOB (Hu et al., 2020). The MOB and HOB pure cultures and their combinations (inoculated at equal initial cell counts of MOB and HOB) were inoculated in DSMZ medium 81 containing trace elements, at a final cell density of 10⁶ cells/mL and a final volume of 20 ml and ca. 100 ml of headspace, using opaque serum vials. All bottles were flushed with a mixture of H₂/CO₂ (80/20% v/v) and O₂ and CH₄ were subsequently supplemented, with the initial concentrations in the gas phase being of 46% H₂, 12% CO₂, 30% O₂, and 12% CH₄ (**Supplementary Material, Selection of Gas Composition**). The cultures were incubated at 28°C under a rotary shaking of 120 rpm. All cultures were grown in biological triplicates. The cell counts through flow cytometry, total protein and amino acid analysis were performed after five days of growth.

Individual Quantification Selective Plate Counts

To count the number of individual HOB or MOB in the co-cultures, a selective plate counting approach was utilized, by counting the number of colony forming units (CFU) on NMS plates, cultivated at 28°C under 50% CH₄ atmosphere (exclusively counting the MOB, which are all obligate methanotrophs (Whittenbury et al., 1970)) and 100% TSA (exclusively counting the HOB, which are mixotrophs). Colonies were counted at variable time intervals between one and 10 days, to account for the variation in the growth rates between the HOB isolates. To reduce counting bias, plates were scanned using an Epson Perfection V800 Photo scanner (Seiko Epson Corporation, Suwa, Nagano, Japan) with the VueScan software (v.9.5.57, Hamrick Software, Sunny Isles Beach, Florida, United States). High-resolution scans were subsequently processed using the open source Fiji software (v. 2.0.0 (Schindelin et al., 2012)) by isolating only the plate in the image, subtracting the background with a rolling ball radius set to 50 through 100 pixels (depending upon image contrast), and making the image monochrome (binary) to compensate for small aberrations in reflection. A Gaussian blur filter was applied to make the colonies rounder,

and either outliers in background noise were removed, or thresholding and contrast/brightness adjustments were employed. If the colonies were overlapping at the edges, a watershed separation was used. Ultimately, colony counting was performed using the “Analyze Particles” function in Fiji. The size was set in pixel units and was dependent upon the size of the cells and remaining background noise. Circularity was set between 0.4 (when colonies were not very circular) and 1; and masks were inspected to verify if counts reflected colonies on the plate.

Flow Cytometry

To assess initial inoculum concentrations (10^6 cells/mL) and not miss cells that were potentially rendered into a viable but not culturable state in co-cultivation, microbial flow cytometry was performed to determine the total cell concentrations, as described before (Van Nevel et al., 2017). In brief, samples were measured on a Becton-Dickinson FACSVerse 3-laser (405/488/640 nm) cytometer (BD, Franklin Lakes, New Jersey, United States), after dilution in phosphate buffered saline (PBS; Thermo Fischer Scientific, Belgium) and staining with 1x SYBR Green I (Life Technologies) for 20 min at 37°C. The FACSVerse instrument used was equipped with a volumetric sensor to allow for absolute quantification without the need for counting beads. In measurements where the volumetric sensors failed, the volumes were imputed based upon robust linear models from the “rlm” function in the R package MASS (Venables and Ripley, 2002) (**Supplementary Table S7, S8**). The excitation of the SYBR green 1 was performed by the 488 nm laser and detected in the FITC-A signal (bi-exponential scaling was used for visualization in the FACSSuite software) with a bandpass filter of 527/32 (following a 507 LP). This channel was also used as a trigger threshold. For microbial fingerprinting (*Data Analysis*), we used channels FSC-A, SSC-A, FITC-A (527/32) and PerCP-Cy5.5-A (700/54 after 665LP).

Total Protein and Amino Acids

The total protein analysis was performed using the DCTM Protein Assay (Bio-Rad Laboratories Inc., Hercules, United States) in triplicate for each sample (**Supplementary Material, Total Protein Quantification**). The essential amino acid (EAA) and conditionally EAA (CEAA) content was determined as described in Muys et al. (2019). Briefly, pelletized biomass was subjected to acid hydrolysis (6M HCl for 24 h at 110°C) in the absence of oxygen. Next, the hydrolysate was derivatized using the Phenomenex EZ:faast amino acid protocol, with norvaline as internal standard, while bovine serum albumin (BSA) was used as a control to determine amino acid recovery after acid hydrolysis. Finally, the quantification of the amino acids was performed using gas chromatography equipped with mass spectrometry. The EAA histidine, lysine, phenylalanine, threonine, valine, leucine and isoleucine; and CEAA glutamine, glycine, proline are presented. Methionine, cysteine, tyrosine, and tryptophan are not included in this work, since they are (partially) destroyed during acid hydrolysis. Therefore, these results are not included in the graphs but are presented in **Supplementary Table S3** for comparison.

Sanger Sequencing

After DNA extraction (**Supplementary Material, DNA extraction**), a near full-length amplicon (27F/1492R) of the 16S rRNA gene of individual isolates was purified, and sent for Sanger sequencing (LGC Genomics GmbH, Berlin; **Supplementary Material, Sanger Sequencing**). The sequences were classified with the Ribosomal Database Project Naïve Bayesian Classifier (Wang et al., 2007), with the 16S rRNA gene training set 16 at a 80% confidence threshold (rdp.cme.msu.edu), SILVA (Quast et al., 2013) nr release 138 ACT (Pruesse et al., 2012) with default options for classification of SSU rRNA genes (<https://www.arb-silva.de/aligner/>) and NCBI Blast. The results were compared, and the most appropriate classification was assigned to the samples.

Data Analysis

All data was analyzed using the R language for statistical programming, version 4.0.4. When performing hypothesis testing for pairwise comparisons, a (pairwise) Wilcoxon Rank Sum test with Holm’s method to adjust the *p*-values was employed. Significance was tested at the α -level of 5%. When normality (and homoscedasticity) assumptions were testable and met, a (Welch) *t*-test was used.

For the analysis of the flow cytometry data, we employed the methods as described by Rubbens et al. (2017) to distinguish the individual HOB and MOB concentrations in the mixture, leveraging the implementations in the Phenoflow package of Props et al. (2016). In brief, we trained a random forest classifier to all potential pairings of the axenic cultivations in modified DSMZ 81 medium (*Cultivation of Selected Co-Cultures in Serum Vials*), and applied this classifier to the co-cultivations at the time of sampling for protein analyses. To assure data quality, we employed “flow_auto_qc” as implemented in flowAI (Monaco et al., 2016), on every combination with at least 1,000 cells. Samples with less than 1,000 cells recorded were not taken along for downstream analysis, due to their limited value for predictions. Analysis code has been made available on github.com/CMET-UGent/Kerckhof_Sakarika_2021.

RESULTS

Isolation Campaign

To obtain a diverse set of autotrophic HOB, a total of 42 isolates were obtained through dilution plating and dilution to extinction (**Supplementary Figure S1**). Based on the length of the sequences obtained by Sanger sequencing and the phylogenetic diversity of the isolates, 19 strains were selected for further screening (**Table 2**).

Preliminary Screening

To select the best potential combinations of HOB and MOB, we performed a co-cultivation assay in microtiter plate format of all 171 combinations (**Figure 3**) and evaluated the composition using selective plating as described in *Individual Quantification*. From those combinations, 10 were selected based upon the ability of the HOB and MOB to grow together

TABLE 2 | Properties of selected HOB isolates for preliminary screening.

Classification	Assigned name	Source	BCCM/LMG accession number	Genbank identifier 16S rRNA
<i>Hydrocarboniphaga effusa</i>	HOB 1	Biocathode	LMG 32163	MT625930
<i>Ancylobacter</i> sp.	HOB 2	Enriched soil samples	LMG 31925	MT625931
<i>Bacillus</i> sp.	HOB 3	Enriched soil samples	LMG 31926	MT625932
<i>Pseudacidovorax intermedius</i>	HOB 4	Enriched soil samples	LMG 31927	MT625933
<i>Achromobacter</i> sp.	HOB 5	Enriched soil samples	LMG 31928	MT625934
<i>Acinetobacter venetianus</i>	HOB 6	Biocathode	*	MT625935
<i>Hydrogenophaga electricum</i>	HOB 7	Biocathode	LMG 32162	MT625936
<i>Azonexus</i> sp.	HOB 8	Enriched soil samples	*	MT625937
<i>Rhodococcus</i> sp.	HOB 9	Enriched soil samples	LMG 31929	MT625938
<i>Xanthobacter</i> sp.	HOB 10	Enriched soil samples	LMG 32161	MT625939
<i>Pseudomonas</i> sp.	HOB 11	Enriched soil samples	LMG 31930	MT625940
<i>Dermacoccus</i> sp.	HOB 12	Enriched soil samples	*	MT625941
<i>Paenibacillus</i> sp.	HOB 13	Enriched soil samples	LMG 32160	MW287568
<i>Xanthobacteraceae</i> sp.	HOB 14	Enriched soil samples	*	MT625943
<i>Pseudomonas</i> sp.	HOB 15	Enriched soil samples	LMG 31931	MT625944
<i>Pseudomonas</i> sp.	HOB 16	Enriched soil samples	LMG 32159	MZ701924
<i>Pseudacidovorax</i> sp.	HOB 17	Enriched soil samples	*	MW287570
<i>Pseudomonas</i> sp.	HOB 18	Enriched soil samples	LMG 31932	MT625947
<i>Paenibacillus</i> sp.	HOB 19	Enriched soil samples	*	MT625948

*Strain was lost before submission to culture collection was possible—recovery attempts failed.

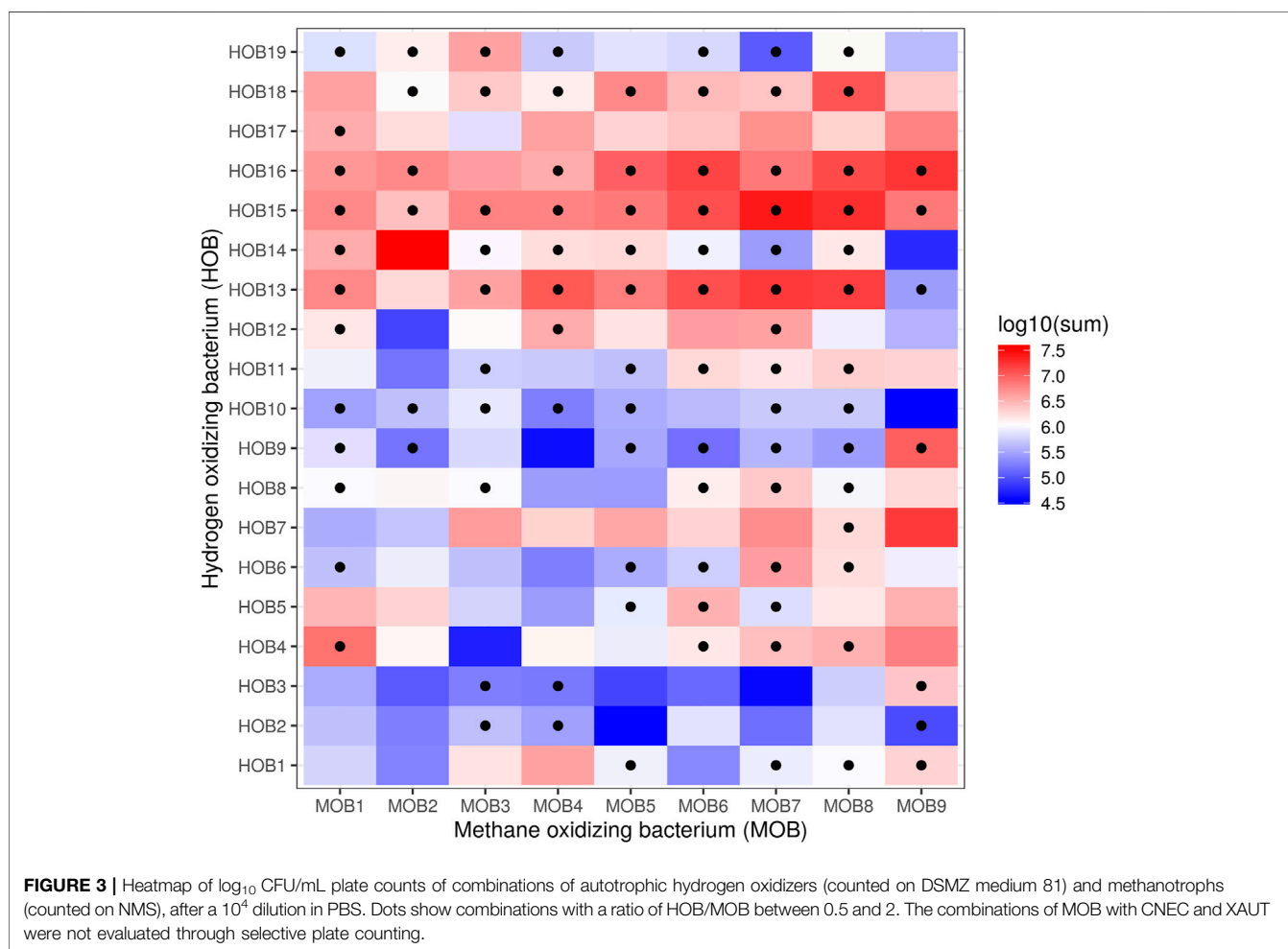


TABLE 3 | Ratio of HOB to MOB and measured CFU concentration after 4 days of incubation in a microtiter plate. Ratios were inferred from selective plating. Values of ratios are expressed as mean values \pm standard deviation ($n = 3$).

Combination	Ratio HOB to MOB	Measured CFU concentration (CFU/ml)
MOB1-HOB7	0.60 ^a	1.6×10^7 ^a
MOB4-HOB13	1.16 ± 0.01	$1.19 \times 10^7 \pm 0.7 \times 10^6$
MOB5-HOB16	1.56 ± 0.42	$1.26 \times 10^7 \pm 2.8 \times 10^6$
MOB6-HOB15	1.30 ± 0.55	$1.20 \times 10^7 \pm 0.3 \times 10^6$
MOB6-HOB16	0.83 ± 0.12	$1.13 \times 10^7 \pm 3.3 \times 10^6$
MOB8-HOB13	0.93 ± 0.32	$1.78 \times 10^7 \pm 2.0 \times 10^6$
MOB8-HOB15	0.89 ± 0.01	$1.56 \times 10^7 \pm 3.4 \times 10^6$
MOB8-HOB18	0.76 ± 0.09	$1.04 \times 10^7 \pm 1.3 \times 10^6$

^aNo standard deviation could be calculated because there was only one observation.

TABLE 4 | Expected and observed cell densities of the combinations and their ratio.

Combination	Ratio	Final cell concentration (cells/mL)	Expected cell concentration with equal mixing ratios (cells/mL)
MOB1-HOB7	1.37 ^a	$1.36 \times 10^7 \pm 2.1 \times 10^6$	$0.99 \times 10^7 \pm 0.90 \times 10^7$
MOB4-HOB13	1.11	$2.13 \times 10^7 \pm 2.3 \times 10^6$	$1.39 \times 10^7 \pm 1.79 \times 10^7$
MOB5-HOB16	1.14 ^a	$4.50 \times 10^7 \pm 3.5 \times 10^6$	$3.96 \times 10^7 \pm 3.20 \times 10^7$
MOB6-HOB15	1.18 ^a	$5.25 \times 10^7 \pm 5.7 \times 10^6$	$4.44 \times 10^7 \pm 3.86 \times 10^7$
MOB6-HOB16	1.43 ^a	$5.30 \times 10^7 \pm 4.0 \times 10^6$	$3.71 \times 10^7 \pm 3.15 \times 10^7$
MOB8-HOB13	1.46 ^a	$1.38 \times 10^7 \pm 2.3 \times 10^6$	$0.94 \times 10^7 \pm 0.81 \times 10^7$
MOB8-HOB15	1.13 ^a	$5.35 \times 10^7 \pm 5.5 \times 10^6$	$4.75 \times 10^7 \pm 4.03 \times 10^7$
MOB8-HOB18	0.67	$1.98 \times 10^7 \pm 4.8 \times 10^6$	$2.95 \times 10^7 \pm 2.30 \times 10^7$
MOB6-XAUT	1.52	$5.57 \times 10^7 \pm 3.8 \times 10^6$	$3.65 \times 10^7 \pm 3.09 \times 10^7$
MOB6-CNEC	3.54	$23.1 \times 10^7 \pm 10.0 \times 10^7$	$6.54 \times 10^7 \pm 5.94 \times 10^7$

^aIndicates where a significant difference in densities could be observed at the 5% significance level (2-sided alternative). Values are reported as averages \pm standard deviation ($n = 3$). XAUT, *Xanthobacter autotrophicus* R-75741; CNEC, *Cupriavidus necator* LMG 1201

TABLE 5 | Ratio of HOB to MOB cell densities at the time of sampling. Values are reported as averages \pm standard deviation ($n = 3$). XAUT, *Xanthobacter autotrophicus* R-75741; CNEC, *Cupriavidus necator* LMG 1201.

Combination	Ratio HOB cell concentration to MOB cell concentration
MOB1-HOB7	0.34 ± 0.04
MOB4-HOB13	0.40 ± 0.09
MOB5-HOB16	0.85 ± 0.10
MOB6-HOB15	0.28 ± 0.04
MOB6-HOB16	1.01 ± 0.05
MOB8-HOB13	0.31 ± 0.05
MOB8-HOB15	0.30 ± 0.03
MOB8-HOB18	0.71 ± 0.20
MOB6-XAUT	0.58 ± 0.20
MOB6-CNEC	3.59 ± 2.18

and the best growing MOB (i.e., MOB6) was combined with *C. necator* and *X. autotrophicus* for reference purposes (results of selective plating; Table 3). The results of plating were supported by inference from the flow cytometry fingerprints (Supplementary Figures S2–4), and every co-culture had a higher cell concentration than could be expected from a 1:1 combination of the cell concentrations of the axenic cultures

taken at the same time-point in the cultivation (Supplementary Table S3).

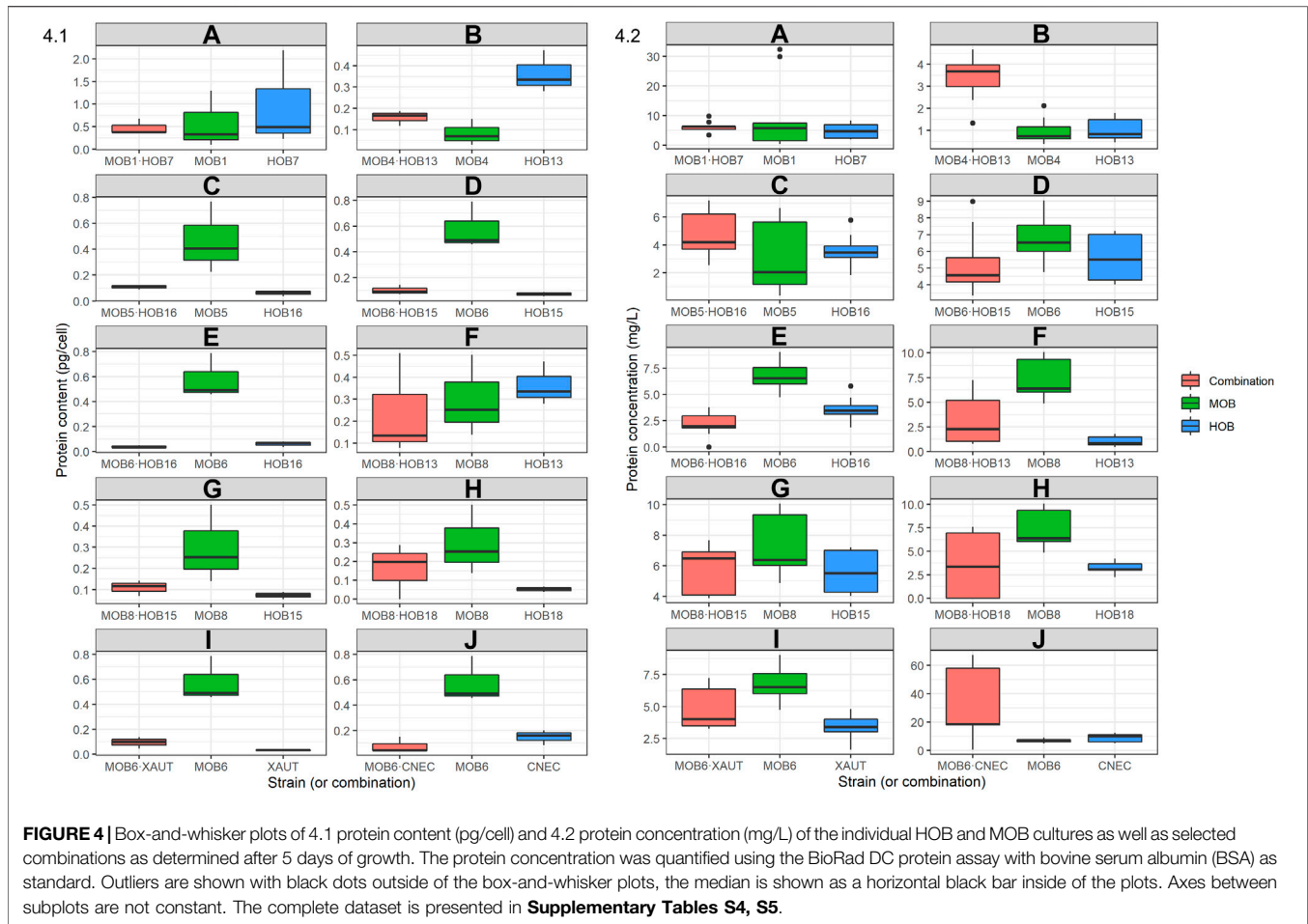
Selected Combinations Co-cultivation Dynamics

To assess the biomass production and composition, we employed flow cytometric fingerprinting and machine learning (Supplementary Figure S5). The total cell concentration was measured for each selected combination as well as its axenic constituents. The axenic growth was used to estimate how much growth could be expected in a 1:1 combination of both strains. Six out of ten combinations have a significantly higher cell density than expected based on the axenic cultures' cell concentration

(Table 4). Only the combination of MOB8 with HOB18 exhibited a lower cell density in co-culture than could be expected from the axenic growth (not significant at the 5% confidence level, $p = 0.482$, 2-sided alternative). Based upon the random forest model predictions, all combinations exhibited co-culture compositions at day 5, where the HOB cell concentration was between 30 and 85% of the MOB cell concentration, except for combination MOB6-HOB16, where the amount of MOB and HOB was comparable; and the combination MOB6-CNEC where 3.59 ± 2.18 ($n = 3$) times more HOB cells (i.e., CNEC) were present than MOB (Table 5).

Total Protein and Amino Acids

The total protein content of the (co-)cultures was quantified in all samples after 5 days of growth (Figure 4.1; Supplementary Table S4). The highest protein content (0.578 pg/cell) for the MOB cultures was obtained by MOB1, while the lowest (0.0825 pg/cell) was obtained by MOB4. The pure HOB cultures presented a less broad protein content range (0.0303–0.362 pg/cell) than the MOB, with HOB13 presenting the highest protein content (0.362 pg/cell). One out of the ten combinations, MOB8-HOB18, presented a 1.38 times higher protein content than the one estimated based on the axenic cultures while



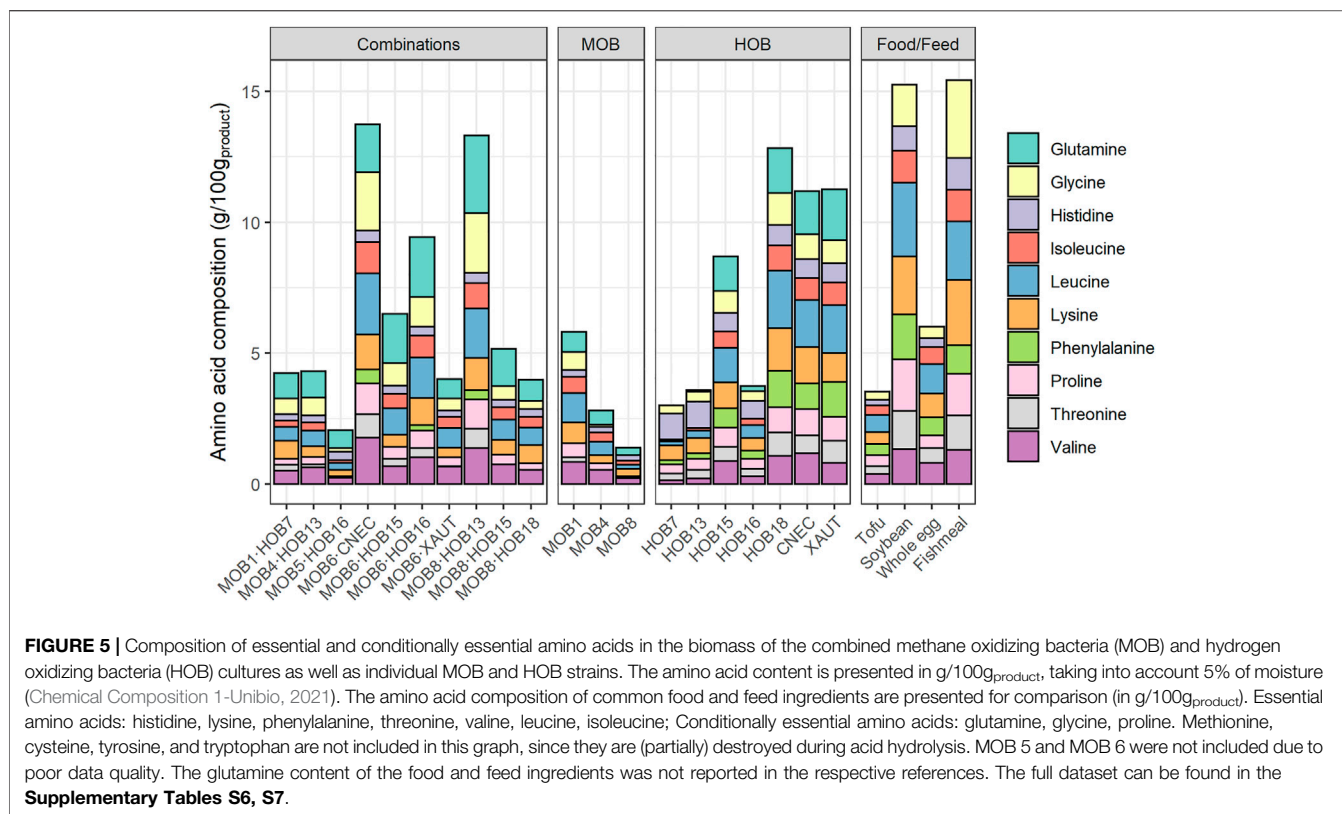
MOB1-HOB7 presented a similar protein content (1.02 times higher) than the individual MOB and HOB strains.

The effect of the co-cultivation was more prominently reflected in the protein concentration (**Figure 3.2; Supplementary Table S5**). Five out of the ten combinations exhibited higher protein concentration than expected based upon an equal mixture of the axenic cultures. These combinations, in declining order, were MOB6-CNEC (3.79 times higher) > MOB4-HOB13 (1.65 times higher) > MOB1-HOB7 (1.17 times higher) > MOB8-HOB15 (1.09 times higher) > MOB8-HOB13 (1.06 times higher). These combinations, except for the latter, resulted in statistically significant higher protein concentration than expected based upon equal mixtures of the axenic cultures (**Supplementary Table S5**). The other five combinations resulted in significantly lower protein concentration than expected, with MOB6-HOB16 resulting in 2.7 times lower protein. Regardless of the comparison with the expected values, the highest protein concentration was achieved by MOB6-CNEC (29.4 mg/L) and the lowest was noted by MOB6-HOB16 (2.14 mg/L).

Overall, the highest EAA and CEEA content was exhibited by MOB6-CNEC (14.5 g/100 g_{product}) and MOB8-HOB13 (14.0 g/100 g_{product}), followed by HOB18 (13.5 g/100 g_{product}) (**Figure 5**). The EAA and CEEA content of the combinations ranged between 2.16 and 14.5 g/100 g_{product}, for the HOB between

3.16 and 13.5 g/100 g_{product}, while the EAA and CEEA content of MOB remained at lower levels (0.37–6.12 g/100 g_{product}). The highest EAA and CEEA contents for the HOB were noted by HOB18 (13.5 g/100 g_{product}) > XAUT (11.8 g/100 g_{product}) > CNEC (11.8 g/100 g_{product}), while the MOB with the highest EAA and CEEA content were MOB1 (6.12 g/100 g_{product}) > MOB4 (2.96 g/100 g_{product}) > MOB8 (1.47 g/100 g_{product}). Five out of the ten combinations resulted in higher EAA and CEEA content than expected based upon the pure cultures (1.4–6.1 times higher; **Figure 5**). MOB8-HOB13 presented 6.1 times higher EAA and CEEA content compared to the pure cultures, followed by MOB6-HOB16 (4.6 times higher content) and MOB6-CNEC (2.4 times higher content). Five out of the ten combinations presented similar EAA and CEEA content than estimated (0.96–1.44 times), while the rest of the cultures presented lower content than estimated (0.56–0.69 times; **Supplementary Table S8**).

The co-cultivation also affected the amino acid distribution, compared to the pure cultures, as can be seen by the distribution of the branched-chain amino acids (BCAA) leucine, isoleucine, and valine (**Supplementary Figure S6**). In all cases, HOB presented the lowest valine content, which increased (1.2–2.9 times) when they were combined with MOB, where the combinations MOB4-HOB13 and MOB1-HOB7 presented the



highest increase (2.9 times). Similarly, 9 out of the 10 combinations had higher isoleucine content than the respective HOB, with MOB1:HOB7 and MOB8:HOB13 presenting the highest increase (3.3 and 3.1 times higher, respectively). The leucine content was higher for 7 out of the 10 combinations compared to the content of the respective HOB, with MOB1:HOB7 and MOB8:HOB13 presenting the highest increase (2.9 and 2.5 times higher, respectively).

DISCUSSION

Co-Cultivation of MOB and HOB for Microbial Protein Production Could Enable System Stability and Higher Resource Utilization Efficiency

The general advantages of using HOB for MP production were summarized from Dou et al. (2019): 1) compared to other MP types, HOB have higher protein content (i.e., 40–60% for microalgae, 30–45% for fungi and 45–55% for yeasts) (Nasseri et al., 2011); 2) they are metabolically versatile, and can switch from autotrophic to heterotrophic mode; 3) even though they are autotrophic, they do not get limited by light availability; 4) they contain intracellular products with prebiotic functions (i.e., polyhydroxybutyrate (PHB)); and 5) they fix CO₂ to protein. Similar advantages can be reported for MOB. In addition, 4) instead of using costly mineral media, low-strength wastewaters

can alternatively be used for the cultivation of MOB and HOB. As an example, *Methylococcus capsulatus* was able to grow on potato wastewater, with the only external supply being methane (Rasouli et al., 2018). In this manuscript, we describe the use of co-cultivation of MOB and (newly isolated) autotrophic HOB for the production of MP. While the general advantages for MP production with either of these organisms are summarized above, their co-cultivation could offer distinct advantages from a metabolic viewpoint, in terms of carbon utilization efficiency and recovery and, potentially, with respect to system stability.

It is known that MOB benefit from co-cultivation in terms of oxidation rates and the consumption of byproducts of methane oxidation (Schmaljohann, 1991; van der Ha et al., 2012; Beck et al., 2013; Stock et al., 2013; Ho et al., 2014; Iguchi et al., 2015; Oshkin et al., 2015; Kerckhof et al., 2016). Given their capability of mixotrophic growth, HOB can serve as ideal co-culture partners to provide this functionality to the MOB. HOB can remove the organic carbon that is “leaked” by the MOB, reducing available niches for potential contaminants of the MP production process, as documented for *Methylococcus capsulatus* (Bath) in co-culture with the heterotrophic *Ralstonia* spp., *Brevibacillus* and *Aneurinibacillus* spp. (Bothe et al., 2002). Other examples of process stabilization by co-cultures with MOB have been documented for groundwater pollutant degradation (Hršak and Begonja, 1998), denitrification (Modin et al., 2007) and production of biopolymers (such as PHB) from CH₄ (Karthikeyan et al., 2015). This metabolic coupling could also be relevant when the process becomes oxygen-limited, which

could trigger methane biocatalysis with extracellular metabolites formed, such as formate, acetate, succinate, lactate, 3-hydroxybutyrate and even H_2 (Kalyuzhnaya et al., 2013), that can be easily consumed by the HOB. The heterotrophic volumetric productivity of HOB is higher than that of autotrophic production (Dou et al., 2019), which can be attributed to gas-liquid mass transfer limitations. Therefore, the addition of HOB to MOB cultures has a benefit that, apart from eliminating the soluble metabolites of methanotrophic bacteria (which can further cause inhibition), it increases biomass concentration and productivity. Finally, it has been estimated that the autotrophic cultivation of HOB requires roughly 30 times less energy than the cultivation of microalgae (Repaske, 1966), which makes them conceptually more interesting partners for MOB than microalgae.

Even though co-cultivation with heterotrophic organisms results in enhanced performance of methanotrophs, they are not able to utilize CO_2 . The combination of MOB with microalgae enables CO_2 utilization (van der Ha et al., 2012) however, the need for a light source and the low growth rate of microalgae would increase the production costs (growth rates of $0.00913\text{--}0.0320\text{ h}^{-1}$ for photoautotrophic microalgae (Kim et al., 2013); 0.420 h^{-1} for HOB (Ishizaki and Tanaka, 1990) and 0.0430 h^{-1} for MOB (Yazdian and Hajizadeh, 2005)). Under autotrophic growth, the HOB will consume CO_2 (both from biogas and produced from methane oxidation) and, hence, decrease the potential for medium acidification. From the perspective of HOB, MOB are primary producers of carbon both for autotrophic growth (CO_2) as well as mixotrophic growth (discussed above). This contributes to an enhanced carbon recovery into MP as both the CH_4 -derived CO_2 as well as the CO_2 already present in the biogas can be assimilated by the HOB. Due to their potential for mixotrophic growth modes, HOB do not require any additional carbon source than biogas (thanks to the MOB's conversion of CH_4 into CO_2 and biomass), and they produce a very limited variety of extracellular metabolites, as the main byproduct of HOB metabolism is water (Volova and Barashkov, 2010). While there have been reports of autotrophic methanotrophic bacteria that can use H_2 , there is no evidence for this metabolism in the liquid culture of proteobacterial MOB (Mohammadi et al., 2019). Where available, we have screened the (finished and draft) genomes of our selected MOB (Table 1) for the presence of RuBisCo and genes of the Calvin-Benson-Bassham (CBB) pathway (which can be an indication of the ability to assimilate CO_2). Only *M. capsulatus* was found to have RuBisCo, as is consistent with literature (Baxter et al., 2002). The genes necessary for a functional CBB pathway were never all detected in any genome.

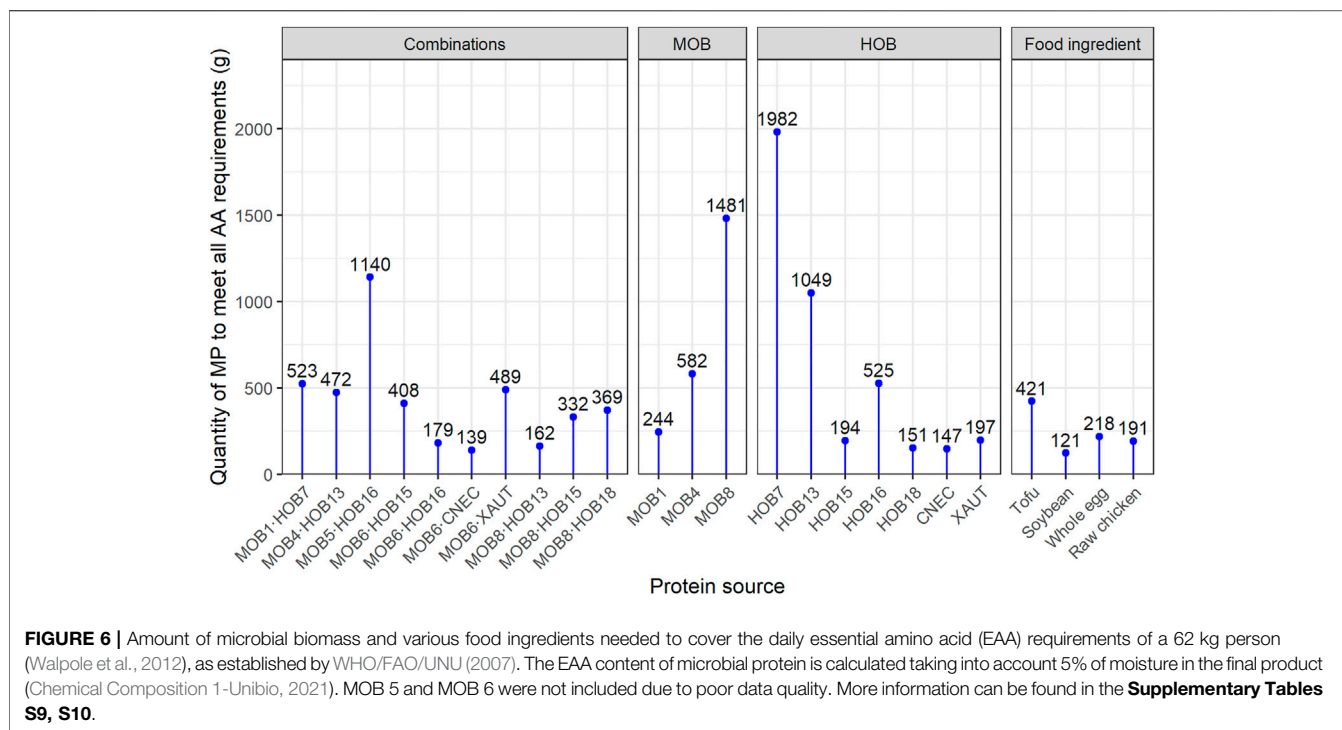
From an applied standpoint, to enable the co-cultivation of MOB and HOB with full valorization of the CH_4 contained in biogas and the H_2 produced by water electrolysis, air needs to be supplemented (Supplementary Material Process Integration is Key for Near-Complete Resource Valorization Leading to Lower Environmental Footprint). Air supplementation would enable 14% increased biomass yield ($0.35\text{ kg}_{\text{biomass}}/\text{kg}_{\text{CODadded}}$) compared to the use of only O_2 from water electrolysis ($0.31\text{ kg}_{\text{biomass}}/\text{kg}_{\text{CODadded}}$). In the case of air addition, the off-

gas will contain CO_2 and N_2 , at a ratio of 4.9 mol N_2 per mol CO_2 . In this case, including N_2 -fixing HOB (Hu et al., 2020) and/or N_2 -fixing MOB (Khmelenina et al., 2018) would add value, since the nitrogen utilization of the overall process would be increased. Nevertheless, further investigations are required to validate this approach, since the lower growth rates of N_2 -fixers could compromise the productivity and the overall economics of the proposed process. The addition of air could also lead to a process with a lower carbon footprint, arising from the higher HOB biomass generation. Specifically, it results in 20% lower CO_2 emissions ($2.4\text{ kg}_{\text{CO}_2}/\text{kg}_{\text{biomass}}$) compared to the base case ($3.0\text{ kg}_{\text{CO}_2}/\text{kg}_{\text{biomass}}$).

Co-Cultivation of MOB and HOB has Positive Effects on Their Nutritional Properties

Two combinations, namely MOB4·HOB13 and MOB6·CNEC, presented both higher protein concentration and amino acid content than expected based upon the pure cultures, which is an indication of a potentially synergistic relationship between MOB and HOB. The increased protein production during co-cultivation (indicated by the higher protein concentration) is a result of the higher cell density achieved during the co-cultivation. Combining MOB and HOB, instead of growing them as pure cultures, also affected the amino acid profiles, which is evident by the distribution of the BCAA (Supplementary Figure S6). This is noteworthy, since BCAA compose 35% of the EAA in muscle proteins and 40% of the required proteins for mammals (Shimomura et al., 2004). They have a broad range of metabolic and physiologic roles, such as the promotion of protein synthesis and the induction of the immune system (Monirujjaman and Ferdouse, 2014). Overall, the best (co-) cultures in terms of EAA profile were MOB6·CNEC; CNEC; HOB18; MOB8·HOB13 and MOB6·HOB16. The amino acid distribution of these cultures was compared against common food and feed ingredients (Supplementary Figure S6), where it was revealed that MP from MOB and HOB presents a favorable EAA composition. Specifically, the MP produced in the present study had an equal or higher quality of EAA compared to soybean, whole egg and raw chicken, while MP generally contained lower amounts of EAA, mainly histidine, lysine and threonine, compared to tofu and fishmeal (Supplementary Material Comparison of Quality of Microbial Protein from MOB and HOB to Food and Feed Ingredients). The best performing co-culture in terms of amino acid composition and quantity, namely MOB6·CNEC, requires 27–67% less quantity than chicken, whole egg and tofu, while it only requires 15% more quantity (139 g_{ww}) than soybean (121 g_{ww}) (Figure 6) to meet the nutritional requirements of an average adult weighing 62 kg (Walpole et al., 2012). In most cases the limiting amino acid was lysine or isoleucine (Supplementary Table S10).

Similar observations were made for other MP types when compared to food/feed ingredients. A bacterial meal produced from natural gas and ammonia, consisting of *Methylococcus capsulatus*, *Alcaligenes acidovorans*, *Bacillus brevis* and *Bacillus*



firmus contained higher amounts of threonine and tryptophan compared to fishmeal, while the lysine content was lower (Skrede et al., 1998). Similarly, the HOB *Paracoccus denitrificans* Y5 and *Paracoccus versutus* D6 were found to have higher content in threonine, valine, alanine, and glycine, compared to soybean meal, while they also contained proline which was not present in soybean meal (Dou et al., 2019). When compared to casein, the HOB *Alcaligenes eutrophus* Z1, *Ralstonia eutropha* B5786 and *Seliberia carboxydohydrogena* Z1062 were found to contain higher amounts of threonine, phenylalanine, tryptophan, tyrosine and histidine (Volova and Barashkov, 2010). The amino acid profile of a methanotroph-enriched culture dominated by *Methylococcales* and *Methylophilales* was composed mainly (50%) of aspartic acid, glutamic acid, glycine, and lysine, while the overall amino acid content was lower than fishmeal and soybean meal (Khoshnevisan et al., 2019).

Apart from their suitable amino acid profile, both MOB and HOB are characterized by a variety of nutritional properties that render them compelling for high quality food/feed production. For instance, MOB and HOB are known to accumulate PHB, at contents up to 68 and 89% w/w, respectively depending on the cultivation conditions (Khosravi-Darani et al., 2013). This increases the value of the product as there is proof that PHB can act as prebiotics (De Schryver et al., 2010). Furthermore, MOB biomass is rich in vitamins. Methanotroph-dominated MP products contain nicotinic acid (130 mg/kg), riboflavin (73 mg/kg), inositol (30 mg/kg), thiamin (12 mg/kg), vitamin B12 (1.7 mg/kg) and biotin (2.8 mg/kg) (Silverman, 2015). Other interesting features include the presence of carotenoids in MOB biomass that belong to the group of xanthophylls

(Leadbetter and Foster, 1958), while the accumulation of carotenoids in HOB cells has also been reported (Davis et al., 1969). MOB can also be a source of unsaturated fatty acids, and macronutrients such as potassium (K), magnesium (Mg), and iron (Fe) (Kuźniar et al., 2019). It is worth noting that these two bacterial groups have different properties. For instance, MOB contain unsaturated acids, while HOB can accumulate very high amounts of PHB (Khosravi-Darani et al., 2013). Therefore, the combination of MOB and HOB can substantially increase the value of the final product.

Another important parameter to consider is the digestibility of the contained amino acids, where MOB and HOB present interesting results. It was found that the proteins contained in HOB biomass are of higher quality than plant proteins in terms of digestibility, while they are inferior to meat proteins (Volova and Barashkov, 2010). Specifically, Volova and Barashkov (2010) found that, unlike other protein sources, a big fraction of the proteins contained in HOB biomass (37–39%) are structural proteins that are less available to proteases and therefore are not well-digested. The corresponding value for meat proteins is 17% and for wheat bran proteins it is 58%. On the other hand, animals digest the amino acids that are contained in MOB biomass very efficiently. Feeding trials with mink (*Mustela vison*) revealed that the digestibility of EAA in MP consisting mainly of *Methylococcus capsulatus* ranges between 75 and 92%, when half of the protein in the feed originated from raw cod (*Gadus morhua*) fillet, and 50% from MP (Schøyen et al., 2005). A plethora of feeding trials presents promising results. For instance, feeding trials with Atlantic salmon (*Salmo salar*) revealed that feed containing up to 36% of MOB-based MP performs as well as fishmeal (Aas et al., 2006). Similarly, when 10% of soybean

contained in conventional broiler feed was substituted by biomass from *Methylococcus capsulatus* and *Methylomonas albus*, there were no significant differences from the control in growth, efficiency of food conversion or nitrogen retention, while the concentrations of amino acids and uric acid in the plasma were not affected either (D'Mello, 1973). Finally, a *Methylococcus capsulatus*-dominated MP diet was found to positively impact the gastrointestinal health of salmonids (Romarheim et al., 2011) and mice (Kleiveland et al., 2013).

Reality Check: Current Knowledge Gaps and Limitations

Currently, some knowledge gaps need to be filled to efficiently engineer the MP production systems aiming at high productivity of a high-quality, cost-competitive product. For instance, a variety of cultivation modes can be used for MP production, such as batch, fed-batch or continuous. Matassa et al. (2016) found that the volumetric productivity of HOB biomass, as well as the yields, substantially increase (2.8–4.8 times) through the cultivation in continuous mode, in comparison to the sequential batch mode. Similarly, D'Mello (1973) found that the content of a variety of amino acids (aspartic acid, glutamic acid, valine, leucine, tyrosine, phenylalanine, lysine, arginine, methionine, and cystine) was higher when *Methylococcus capsulatus* and *Methylomonas albus* were grown on continuous mode, compared to their cultivation in batch mode. Even though the continuous cultivation mode increases the risk of contamination in the case of pure cultures or synthetic communities, the combination of MOB and HOB can enable the removal of “leaked” metabolic byproducts (e.g., carboxylic acids), thereby eliminating the available niches and contributing to system stability (*Co-Cultivation of MOB and HOB for Microbial Protein Production Could Enable System Stability and Higher Resource Utilization Efficiency*). In addition, the nucleic acid content of bacterial cells increased at higher growth rates. Specifically, Volova and Barashkov (2010) found that the nucleic acid content of *S. carboxydohydrogena* Z1062 cells increased from ca. 6% to ca. 9% when the dilution rate increased from 0.05 to 0.25 h⁻¹, due to the intensification of RNA synthesis. Even though this approach resulted in increased protein productivity and lower carbohydrate content (which are favorable for a MP product with high protein content) the increase of RNA content lowers the product quality. Consequently, the cultivation mode is an important aspect, because of a correlation between the increase in protein productivity and the increase in nucleic acid content. This is particularly important when considering the possibility for gout or kidney stone formation when consuming high nucleic acid content food/feed ingredients (El Ridi and Tallima, 2017). This could decrease the overall quality of the product. Therefore, it can be concluded that many tools can aid at steering the quality of the product while the tradeoff between quantity and quality should be carefully assessed.

Other parameters that specifically affect the growth of organisms that consume carbon and energy sources from the gas phase should be carefully selected. For instance, it was

demonstrated that the selection of gas mixtures affects the protein content and productivity of mixed MOB and HOB co-cultures (Acosta et al., 2019). This is important considering that the MP production process proposed here is integrated with biogas production *via* anaerobic digestion, which is prone to variable product composition (e.g., varying ratios of CH₄:CO₂, potential presence of H₂S). A carefully selected synthetic co-culture, composed of community members with complementary characteristics could enable higher adaptability to these potentially variable inputs and therefore contribute to overall system stability (Bothe et al., 2002). Furthermore, it was shown that the presence of H₂S in the biogas affects the growth and nutritional quality of *Methylocapsa acidiphila* (Xu et al., 2020). The composition of the cultivation medium is also important, as it has been reported that the addition of 100 µg Cu²⁺/L to NMS medium significantly affects the cell density of MOB since Cu is a key element for the methanotrophic metabolism (Semrau et al., 2018). Another challenge for the industrial production of MOB and HOB concerns the mass transfer limitation due to the low solubility of carbon and/or energy sources (i.e., CH₄ and H₂) in water. Some approaches have proven to efficiently increase the availability of substrates. For instance, it was shown that HOB grow more efficiently when the gas is continuously fed to maintain constant pressure close to atmospheric (Cohen and Burris, 1955). Similarly, a continuous methane supply is required to maintain sufficient amounts of soluble methane and avoid the reduced availability to the cells (Tikhomirova and But, 2021). However, this leads to big volumes of methane needed. The required volume can be minimized by adjusting the reactor geometry (e.g., ratio height-to-inner diameter), using gas-permeable membranes, agitation, recirculation and/or pre-mixing methane with the cultivation medium (Tikhomirova and But, 2021). Furthermore, the addition of 10% v/v silicon oil in a two-phase partitioning bioreactor has resulted in 330% increased growth rate of *Methylosinus sporium* (Ordaz et al., 2014). Similar results were observed during the cultivation of *Methylosinus trichosporium* OB3b where the addition of 5% paraffin resulted in ca. 7 times higher biomass (14 g_{CDW}/L) compared to no paraffin addition (Han et al., 2009). This phenomenon was attributed to the increased methane dissolution rate achieved by the addition of paraffin as well as the potential affinity of *M. trichosporium* OB3b to paraffin. Furthermore, the reactor design plays a catalytic role in the substrate supply. Loop bioreactors have been used to assure efficient methane supply to methanotrophs, through the increased gas flow in the reactor (Petersen et al., 2017), while further reactor optimization with high-performance agitation achieved a gas transfer coefficient (k_La) of 2,970 h⁻¹ resulting in the production of 91 g_{CDW}/L (Tanaka et al., 1995). These values are 2.5 and 3 times higher than the k_La and biomass concentration achieved in the U-Loop reactor (1,200 h⁻¹ and 30 g_{CDW}/L) (Eriksen et al., 2009; AICHE, 2014). Finally, Wendlandt et al. (2005) achieved 65 g/L biomass concentration of *Methylocystis* sp. using pressure bioreactors due to the increased methane solubility. However, the cost-efficiency and safety of this approach are still disputed. Bubble-free membrane bioreactors have been proposed as a

promising approach to produce MP from MOB, since they eliminate the possibility of creating an explosive atmosphere and result in 33% higher N yield compared to conventional reactors relying on bubbling (from 5.2 to 6.9 g_{VSS}/g_{NH₃}) (Valverde-Pérez et al., 2020). Therefore, process and reactor design parameters need to be thoroughly investigated and carefully assessed to establish the optimal approach for MP production using MOB and HOB.

Consequently, even though the production of MOB and HOB for MP as food/feed ingredient seems promising, there are still some challenges that need to be overcome before their large-scale production on recovered resources can be realized.

CONCLUSION

In this manuscript, we investigated if co-cultivation of HOB and MOB can be beneficial for MP production. The ten best combinations of HOB and MOB showed synergistic effects, with growth in co-cultures outperforming growth in axenic culture for six out of ten combinations. The combination of MOB and HOB resulted in up to 3.8 times higher protein concentration and 6.1 times higher EAA content compared to pure cultures, while the EAA profile of the (co-)cultures was comparable to common food ingredients. The most promising combination in terms of protein concentration and EAA profile was *Methyloparacoccus murrelli* LMG 27482 and *Cupriavidus necator* LMG 1201. Microbial protein from *M. murrelli* and *C. necator* requires 27–67% less quantity than chicken, whole egg and tofu, while it only requires 15% more quantity than the amino acid-dense soybean to cover the needs of an average adult. Hence, the combination of MOB and HOB can enable enhanced carbon recovery from biogas, and contribute to the development of more sustainable food/feed production systems.

DATA AVAILABILITY STATEMENT

The datasets presented in this study can be found in online repositories. The names of the repository/repositories and accession number(s) can be found below: <https://www.ncbi.nlm.nih.gov/nuccore/MT625930>, <https://www.ncbi.nlm.nih.gov/nuccore/MT625931>, <https://www.ncbi.nlm.nih.gov/nuccore/MT625932>, <https://www.ncbi.nlm.nih.gov/nuccore/MT625933>, <https://www.ncbi.nlm.nih.gov/nuccore/MT625934>, <https://www.ncbi.nlm.nih.gov/nuccore/MT625935>, <https://www.ncbi.nlm.nih.gov/nuccore/MT625936>, <https://www.ncbi.nlm.nih.gov/nuccore/MT625937>, <https://www.ncbi.nlm.nih.gov/nuccore/MT625938>, <https://www.ncbi.nlm.nih.gov/nuccore/MT625939>, <https://www.ncbi.nlm.nih.gov/nuccore/MT625940>, <https://www.ncbi.nlm.nih.gov/nuccore/MT625941>, <https://www.ncbi.nlm.nih.gov/nuccore/MT625942>, <https://www.ncbi.nlm.nih.gov/nuccore/MT625943>, <https://www.ncbi.nlm.nih.gov/nuccore/MT625944>, <https://www.ncbi.nlm.nih.gov/nuccore/MT625945>, <https://www.ncbi.nlm.nih.gov/nuccore/MT625946>, <https://www.ncbi.nlm.nih.gov/nuccore/MT625947>, <https://www.ncbi.nlm.nih.gov/nuccore/MT625948>, <https://www.ncbi.nlm.nih.gov/nuccore/MW287569>, <https://www.ncbi.nlm.nih.gov/nuccore/MW287568>, <https://www.ncbi.nlm.nih.gov/nuccore/MW287570>, <https://doi.org/10.6084/m9.figshare.14776272.v1>, <https://doi.org/10.6084/m9.figshare.14776263.v1>, https://github.com/CMET-UGent/Kerckhof_Sakarika_2021.

REFERENCES

Aas, T. S., Grisdale-Helland, B., Terjesen, B. F., and Helland, S. J. (2006). Improved Growth and Nutrient Utilisation in Atlantic Salmon (*Salmo salar*) Fed Diets

Containing a Bacterial Protein Meal. *Aquaculture*. 259, 365–376. doi:10.1016/j.aquaculture.2006.05.032

Acosta, N., Sakarika, M., Kerckhof, F.-M., Law, C. K. Y., De Vrieze, J., and Rabaey, K. (2020). Microbial Protein Production from Methane via Electrochemical Biogas Upgrading. *Chem. Eng. J.* 391, 123625. doi:10.1016/j.cej.2019.123625

AUTHOR CONTRIBUTIONS

F-MK original idea, experimental plan, experimental work, data analysis, writing, revision and editing of article; MS experimental work, meta-analysis, writing, revision and editing of article; MV experimental work, data analysis; MM assistance with analysis (amino acid quantification); PV assistance with analysis (amino acid quantification); JD idea, revision of article; SV revision of article; KR revision of article, scientific guidance, funding; NB scientific guidance and discussions, funding, revision of article.

FUNDING

F-MK and MV were supported by the BELSPO IUAP μ -manager research action (P7/25). F-MK is supported by VLAIO (Flemish Agency for Innovation and entrepreneurship). MS was supported by the Catalisti cluster SBO project CO2PERATE (“All renewable CCU based on formic acid integrated in an industrial microgrid”), with the financial support of VLAIO (Flemish Agency for Innovation and Entrepreneurship). NB was supported by the project of Geconcerteerde Onderzoeksactie (GOA) of Ghent University (BOF15/GOA/006).

ACKNOWLEDGMENTS

The authors thank 1) Tim Lacoere for his graphical work, as well as assistance with the molecular work and 2) Jana De Bodt for her help with the submission of the isolates to the culture collection.

SUPPLEMENTARY MATERIAL

The Supplementary Material for this article can be found online at: <https://www.frontiersin.org/articles/10.3389/fbioe.2021.733753/full#supplementary-material>

- AICHE (2014). Bioconversion of Methane. Available at: <https://www.aiche.org/chenected/2014/04/bioconversion-methane> (Accessed May 8, 2021).
- Aiking, H., and de Boer, J. (2020). The Next Protein Transition. *Trends Food Sci. Technology*. 105, 515–522. doi:10.1016/j.tifs.2018.07.008
- AlSayed, A., Fergala, A., and Eldyasti, A. (2018). Sustainable Biogas Mitigation and Value-Added Resources Recovery Using Methanotrophs Intergrated Into Wastewater Treatment Plants. *Rev. Environ. Sci. Biotechnol.* 17, 351–393. doi:10.1007/s11157-018-9464-3
- Alvarado, K. A., García Martínez, J. B., Matassa, S., Egbejimba, J., and Denkenberger, D. (2021). Food in Space From Hydrogen-Oxidizing Bacteria. *Acta Astronautica*. 180, 260–265. doi:10.1016/j.actastro.2020.12.009
- Apaiiah, R. K., Linnemann, A. R., and Van Der Kooij, H. J. (2006). Exergy Analysis: A Tool to Study the Sustainability of Food Supply Chains. *Food Res. Int.* 39, 1–11. doi:10.1016/j.foodres.2005.04.006
- Baxter, N. J., Hirt, R. P., Bodrossy, L., Kovacs, K. L., Embley, M. T., Prosser, J. I., et al. (2002). The Ribulose-1,5-Bisphosphate Carboxylase/Oxygenase Gene Cluster of *Methylococcus Capsulatus* (Bath). *Arch. Microbiol.* 177, 279–289. doi:10.1007/s00203-001-0387-x
- Beck, D. A. C., Kalyuzhnaya, M. G., Malfatti, S., Tringe, S. G., Glavina del Rio, T., Ivanova, N., et al. (2013). A Metagenomic Insight Into Freshwater Methane-Utilizing Communities and Evidence for Cooperation between the Methylococcaceae and the Methylophilaceae. *PeerJ*. 1, e23–23. doi:10.7717/peerj.23
- Bothe, H., Jensen, K. M. x. l., A., M., J., L., C., J. x. r., Bothe, H., et al. (2002). Heterotrophic Bacteria Growing in Association With *Methylococcus Capsulatus* (Bath) in a Single Cell Protein Production Process. *Appl. Microbiol. Biotechnol.* 59, 33–39. doi:10.1007/s00253-002-0964-1
- Chemical Composition 1-Unibio (2021). Available at: <https://www.unibio.dk/end-product/chemical-composition-1/> (Accessed November 2, 2019).
- Cohen, J. S., and Burris, R. H. (1955). A Method for the Culture of Hydrogen Bacteria. *J. Bacteriol.* 69, 316–319. doi:10.1128/jb.69.3.316-319.1955
- Crab, R., Defoirdt, T., Bossier, P., and Verstraete, W. (2012). Biofloc Technology in Aquaculture: Beneficial Effects and Future Challenges. *Aquaculture*. 356–357, 351–356. doi:10.1016/j.aquaculture.2012.04.046
- D'Mello, J. P. F. (1973). The Use of Methane-Utilising Bacteria as a Source of Protein for Young Chicks. *Br. Poult. Sci.* 14, 291–301. doi:10.1080/00071667308416031
- Davis, D. H., Doudoroff, M., Stanier, R. Y., and Mandel, M. (1969). Proposal to Reject the Genus *Hydrogenomonas*: Taxonomic Implications. *Int. J. Syst. Bacteriol.* 19, 375–390. doi:10.1099/00207713-19-4-375
- De Schryver, P., Sinha, A. K., Kunwar, P. S., Baruah, K., Verstraete, W., Boon, N., et al. (2010). Poly- β -Hydroxybutyrate (PHB) Increases Growth Performance and Intestinal Bacterial Range-Weighted Richness in Juvenile European Sea Bass, *Dicentrarchus labrax*. *Appl. Microbiol. Biotechnol.* 86, 1535–1541. doi:10.1007/s00253-009-2414-9
- Delgado, C. L. (2003). Rising Consumption of Meat and Milk in Developing Countries Has Created a New Food Revolution. *J. Nutr.* 133, 3907S–3910S. doi:10.1093/jn/133.11.3907s
- Dou, J., Huang, Y., Ren, H., Li, Z., Cao, Q., Liu, X., et al. (2019). Autotrophic, Heterotrophic, and Mixotrophic Nitrogen Assimilation for Single-Cell Protein Production by Two Hydrogen-Oxidizing Bacterial Strains. *Appl. Biochem. Biotechnol.* 187, 338–351. doi:10.1007/s12010-018-2824-1
- Ehsani, E. (2020). *Diversity Management in the Synthetic and Enriched Microbial Communities*. Ghent University.
- El Ridi, R., and Tallima, H. (2017). Physiological Functions and Pathogenic Potential of Uric Acid: A Review. *J. Adv. Res.* 8, 487–493. doi:10.1016/j.jare.2017.03.003
- Eriksen, H., Strand, K., and Jorgensen, L. (2009). *Method of Fermentation (US 7,579,163 B2)*. United States Patent and Trademark Office.
- FAO; IFAD; UNICEF; WFP, and WHO (2019). *The State of Food Security and Nutrition in the World 2019*. Rome, Italy: Safeguarding against economic slowdowns and downturns. doi:10.26596/wn.201910395-97
- Foster, F., John, H., and Litchfield, H. (1969). *SYSTEMS APPROACH APPROACH TO TO EVALUATING HYDROGENOMONAS CULTURES*. NASA CR-1296. NASA contractor report. NASA CR. Ohio: National Aeronautics and Space Administration.
- Gerber, P. J., Steinfeld, H., Henderson, B., Mottet, A., Opio, C., Dijkman, J., et al. (2013). *Tackling Climate Change through Livestock – A Global Assessment of Emissions and Mitigation Opportunities*. Rome, Italy: Food and Agriculture Organization of the United Nations (FAO). Available at: www.fao.org/publications (Accessed August 5, 2019).
- Gerland, P., Raftery, A. E., Ševčíková, H., Li, N., Gu, D., Spoorenberg, T., et al. (2014). World Population Stabilization Unlikely This century. *Science*. 346, 234–237. doi:10.1126/science.1257469
- Han, B., Su, T., Wu, H., Gou, Z., Xing, X.-H., Jiang, H., et al. (2009). Paraffin Oil as a “Methane Vector” for Rapid and High Cell Density Cultivation of *Methylosinus Trichosporium* OB3b. *Appl. Microbiol. Biotechnol.* 83, 669–677. doi:10.1007/s00253-009-1866-2
- Hashempour-Baltork, F., Khosravi-Darani, K., Hosseini, H., Farshi, P., and Reihani, S. F. (2020). Mycoproteins as Safe Meat Substitutes. *J. Clean. Prod.* 253, 119958. doi:10.1016/j.jclepro.2020.119958
- Ho, A., de Roy, K., Thas, O., De Neve, J., Hoefman, S., Vandamme, P., et al. (2014). The More, the Merrier: Heterotroph Richness Stimulates Methanotrophic Activity. *ISME J.* 8, 1945–1948. doi:10.1038/ismej.2014.74
- Hoefman, S., van der Ha, D., De Vos, P., Boon, N., and Heylen, K. (2012). Miniaturized Extinction Culturing Is the Preferred Strategy for Rapid Isolation of Fast-Growing Methane-Oxidizing Bacteria. *Microb. Biotechnol.* 5, 368–378. doi:10.1111/j.1751-7915.2011.00314.x
- Hršak, D., and Begonja, A. (1998). Growth Characteristics and Metabolic Activities of the Methanotrophic-Heterotrophic Groundwater Community. *J. Appl. Microbiol.* 85, 448–456. doi:10.1046/j.1365-2672.1998.853505.x
- Hu, X., Kerckhof, F.-M., Ghesquière, J., Bernaerts, K., Boeckx, P., Clauwaert, P., et al. (2020). Microbial Protein Out of Thin Air: Fixation of Nitrogen Gas by an Autotrophic Hydrogen-Oxidizing Bacterial Enrichment. *Environ. Sci. Technol.* 54, 3609–3617. doi:10.1021/acs.est.9b06755
- IEA (2020). *Outlook for Biogas and Biomethane: Prospects for Organic Growth*. Paris, France: International Energy Agency (IEA) Publications. Available at: <https://www.iea.org/reports/outlook-for-biogas-andbiomethane-prospects-for-organic-growth/an-introduction-to-biogas-andbiomethane> (Accessed July 31, 2020).
- Iguchi, H., Yurimoto, H., and Sakai, Y. (2015). Interactions of Methylophilic Bacteria With Plants and Other Heterotrophic Bacteria. *Microorganisms*. 3, 137–151. doi:10.3390/microorganisms3020137
- Ishizaki, A., and Tanaka, K. (1990). Batch Culture of *Alcaligenes Eutrophus* ATCC 17697T Using Recycled Gas Closed Circuit Culture System. *J. Ferment. Bioeng.* 69, 170–174. doi:10.1016/0922-338X(90)90041-T
- Kalyuzhnaya, M. G., Yang, S., Rozova, O. N., Smalley, N. E., Clubb, J., Lamb, A., et al. (2013). Highly Efficient Methane Biocatalysis Revealed in a Methanotrophic Bacterium. *Nat. Commun.* 4, 1–7. doi:10.1038/ncomms3785
- Karthikeyan, O. P., Chidambarampadmavathy, K., Nadarajan, S., Lee, P. K. H., and Heimann, K. (2015). Effect of CH₄/O₂ Ratio on Fatty Acid Profile and Polyhydroxybutyrate Content in a Heterotrophic-Methanotrophic Consortium. *Chemosphere*. 141, 235–242. doi:10.1016/j.chemosphere.2015.07.054
- Kerckhof, F. M., De Rudder, C., Tsilia, V., Props, R., Ho, A., Heylen, K., et al. (2016). Functional Stabilisation and Partner Selection during Repeated Co-cultivation in a Methanotrophic Interactome. *PeerJ Preprints*. 4, e2014v1. doi:10.7287/peerj.preprints.2014v1
- Khmelenina, V. N., Colin Murrell, J., Smith, T. J., and Trotsenko, Y. A. (2018). “Physiology and Biochemistry of the Aerobic Methanotrophs,” in *Aerobic Utilization of Hydrocarbons, Oils and Lipids*. Editor F. Rojo (Springer International Publishing), 1–25. doi:10.1007/978-3-319-39782-5_4-1
- Khosravian, B., Tsapekos, P., Zhang, Y., Valverde-Pérez, B., and Angelidaki, I. (2019). Urban Biowaste Valorization by Coupling Anaerobic Digestion and Single Cell Protein Production. *Bioresour. Technology*. 290, 121743. doi:10.1016/j.biortech.2019.121743
- Khosravi-Darani, K., Mokhtari, Z.-B., Amari, T., and Tanaka, K. (2013). Microbial Production of Poly(hydroxybutyrate) From C1 Carbon Sources. *Appl. Microbiol. Biotechnol.* 97, 1407–1424. doi:10.1007/s00253-012-4649-0
- Kim, S., Park, J.-e., Cho, Y.-B., and Hwang, S.-J. (2013). Growth Rate, Organic Carbon and Nutrient Removal Rates of *Chlorella Sorokiniana* in Autotrophic, Heterotrophic and Mixotrophic Conditions. *Bioresour. Technology*. 144, 8–13. doi:10.1016/j.biortech.2013.06.068

- Kleiveland, C. R., Hult, L. T. O., Kaldhusdal, M., Christofferesen, T. E., Bengtsson, O., et al. (2013). The Noncommensal Bacterium *Methylococcus Capsulatus* (Bath) Ameliorates Dextran Sulfate (Sodium Salt)-Induced Ulcerative Colitis by Influencing Mechanisms Essential for Maintenance of the Colonic Barrier Function. *Appl. Environ. Microbiol.* 79, 48–56. doi:10.1128/AEM.02464-12
- Kunasundari, B., Murugayah, V., Kaur, G., Maurer, F. H. J., and Sudesh, K. (2013). Revisiting the Single Cell Protein Application of *Cupriavidus Necator* H16 and Recovering Bioplastic Granules Simultaneously. *PLoS One* 8, e78528. doi:10.1371/journal.pone.0078528
- Kuźniar, A., Furtak, K., Włodarczyk, K., Stępniewska, Z., and Wolińska, A. (2019). Methanotrophic Bacterial Biomass as Potential mineral Feed Ingredients for Animals. *Int. J. Environ. Res. Public Health* 16, 2674. doi:10.3390/ijerph16152674
- Leadbetter, E. R., and Foster, J. W. (1958). Studies on Some Methane-Utilizing Bacteria. *Archiv. Mikrobiol.* 30, 91–118. doi:10.1007/BF00509229
- Linder, T. (2019). Making the Case for Edible Microorganisms as an Integral Part of a More Sustainable and Resilient Food Production System. *Food Sec.* 11, 265–278. doi:10.1007/s12571-019-00912-3
- Matassa, S., Batstone, D. J., Hülsen, T., Schnoor, J., and Verstraete, W. (2015). Can Direct Conversion of Used Nitrogen to New Feed and Protein Help Feed the World? *Environ. Sci. Technol.* 49, 5247–5254. doi:10.1021/es505432w
- Matassa, S., Verstraete, W., Pikaar, I., and Boon, N. (2016). Autotrophic Nitrogen Assimilation and Carbon Capture for Microbial Protein Production by a Novel Enrichment of Hydrogen-Oxidizing Bacteria. *Water Res.* 101, 137–146. doi:10.1016/j.watres.2016.05.077
- Modin, O., Fukushi, K., and Yamamoto, K. (2007). Denitrification With Methane as External Carbon Source. *Water Res.* 41, 2726–2738. doi:10.1016/j.watres.2007.02.053
- Mohammadi, S. S., Schmitz, R. A., Pol, A., Berben, T., Jetten, M. S. M., and Op Den Camp, H. J. M. (2019). The Acidophilic Methanotroph Methylacidimicrobium Tartarophylax 4AC Grows as Autotroph on H₂ Under Microoxic Conditions. *Front. Microbiol.* 10, 1–10. doi:10.3389/fmicb.2019.02352
- Monaco, G., Chen, H., Poidinger, M., Chen, J., de Magalhães, J. P., and Larbi, A. (2016). FlowAI: Automatic and Interactive Anomaly Discerning Tools for Flow Cytometry Data. *Bioinformatics.* 32, 2473–2480. doi:10.1093/bioinformatics/btw191
- Monirujjaman, M., and Ferdouse, A. (2014). Metabolic and Physiological Roles of Branched-Chain Amino Acids. *Adv. Mol. Biol.* 2014, 1–6. doi:10.1155/2014/364976
- Muys, M., Sui, Y., Schwaiger, B., Lesueur, C., Vandenhevel, D., Vermeir, P., et al. (2019). High Variability in Nutritional Value and Safety of Commercially Available *Chlorella* and *Spirulina* Biomass Indicates the Need for Smart Production Strategies. *Bioresour. Technology.* 275, 247–257. doi:10.1016/j.biortech.2018.12.059
- Nasseri, A. T., Rasoul-Ami, S., Morowvat, M. H., and Ghasemi, Y. (2011). Single Cell Protein: Production and Process. *Am. J. Food Technology.* 6, 103–116. doi:10.3923/ajft.2011.103.116
- Naylor, R. L., Goldburg, R. J., Primavera, J. H., Kautsky, N., Beveridge, M. C. M., Clay, J., et al. (2000). Effect of Aquaculture on World Fish Supplies. *Nature.* 405, 1017–1024. doi:10.1038/35016500
- Ordaz, A., López, J. C., Figueroa-González, I., Muñoz, R., and Quijano, G. (2014). Assessment of Methane Biodegradation Kinetics in Two-Phase Partitioning Bioreactors by Pulse Respirometry. *Water Res.* 67, 46–54. doi:10.1016/j.watres.2014.08.054
- Oshkin, I. Y., Beck, D. A., Lamb, A. E., Tchesnokova, V., Benuska, G., Mctaggart, T. L., et al. (2015). Methane-fed Microbial Microcosms Show Differential Community Dynamics and Pinpoint Taxa Involved in Communal Response. *ISME J.* 9, 1119–1129. doi:10.1038/ismej.2014.203
- Pander, B., Mortimer, Z., Woods, C., McGregor, C., Dempster, A., Thomas, L., et al. (2020). Hydrogen Oxidising Bacteria for Production of Single-Cell Protein and Other Food and Feed Ingredients. *Eng. Biol.* 4, 21–24. doi:10.1049/enb.2020.0005
- Petersen, L. A. H., Villadsen, J., Jørgensen, S. B., and Gernaey, K. V. (2017). Mixing and Mass Transfer in a Pilot Scale U-Loop Bioreactor. *Biotechnol. Bioeng.* 114, 344–354. doi:10.1002/bit.26084
- PrévotEAU, A., Clauwaert, P., Kerckhof, F.-M., and Rabaey, K. (2019). Oxygen-Reducing Microbial Cathodes Monitoring Toxic Shocks in Tap Water. *Biosens. Bioelectron.* 132, 115–121. doi:10.1016/j.bios.2019.02.037
- Props, R., Monsieus, P., Mysara, M., Clement, L., and Boon, N. (2016). Measuring the Biodiversity of Microbial Communities by Flow Cytometry. *Methods Ecol. Evol.* 7, 1376–1385. doi:10.1111/2041-210X.12607
- Pruesse, E., Peplies, J., and Glöckner, F. O. (2012). SINA: Accurate High-Throughput Multiple Sequence Alignment of Ribosomal RNA Genes. *Bioinformatics.* 28, 1823–1829. doi:10.1093/bioinformatics/bts252
- Quast, C., Pruesse, E., Yilmaz, P., Gerken, J., Schweer, T., Yarza, P., et al. (2013). The SILVA Ribosomal RNA Gene Database Project: Improved Data Processing and Web-Based Tools. *Nucleic Acids Res.* 41, D590–D596. doi:10.1093/nar/gks1219
- Rasouli, Z., Valverde-Pérez, B., D'Este, M., De Francisci, D., and Angelidaki, I. (2018). Nutrient Recovery From Industrial Wastewater as Single Cell Protein by a Co-culture of green Microalgae and Methanotrophs. *Biochem. Eng. J.* 134, 129–135. doi:10.1016/j.bej.2018.03.010
- Ravindra, A. P. (2000). Value-Added Food. *Biotechnol. Adv.* 18, 459–479. doi:10.1016/S0734-9750(00)00045-8
- Repaske, R. (1966). Characteristics of Hydrogen Bacteria. *Biotechnol. Bioeng.* 8, 217–235. doi:10.1002/bit.260080204
- Ritala, A., Häkkinen, S. T., Toivari, M., and Wiebe, M. G. (2017). Single Cell Protein-State-Of-The-Art, Industrial Landscape and Patents 2001–2016. *Front. Microbiol.* 8, 2009. doi:10.3389/fmicb.2017.02009
- Romarheim, O. H., Överland, M., Mydland, L. T., Skrede, A., and Landsverk, T. (2011). Bacteria Grown on Natural Gas Prevent Soybean Meal-Induced Enteritis in Atlantic Salmon. *J. Nutr.* 141, 124–130. doi:10.3945/jn.110.128900
- Rubbens, P., Props, R., Boon, N., and Waegeman, W. (2017). Flow Cytometric Single-Cell Identification of Populations in Synthetic Bacterial Communities. *PLoS One* 12, e0169754. doi:10.1371/journal.pone.0169754
- Schindelin, J., Arganda-Carreras, I., Frise, E., Kaynig, V., Longair, M., Pietzsch, T., et al. (2012). Fiji: An Open-Source Platform for Biological-Image Analysis. *Nat. Methods.* 9, 676–682. doi:10.1038/nmeth.2019
- Schmaljohann, R. (1991). Oxidation of Various Potential Energy Sources by the Methanotrophic Endosymbionts of *Siboglinum Poseidoni* (*Pogonophora*). *Mar. Ecol. Prog. Ser.* 76, 143–148. doi:10.3354/meps076143
- Schøyen, H. F., Froyland, J. R. K., Sahlström, S., Knutsen, S. H., and Skrede, A. (2005). Effects of Autolysis and Hydrolysis of Bacterial Protein Meal Grown on Natural Gas on Chemical Characterization and Amino Acid Digestibility. *Aquaculture.* 248, 27–33. doi:10.1016/j.aquaculture.2005.04.017
- Semrau, J. D., DiSpirito, A. A., Gu, W., and Yoon, S. (2018). Metals and Methanotrophy. *Appl. Environ. Microbiol.* 84, e02289. doi:10.1128/AEM.02289-17
- Shimomura, Y., Murakami, T., Nakai, N., Nagasaki, M., and Harris, R. A. (2004). Exercise Promotes BCAA Catabolism: Effects of BCAA Supplementation on Skeletal Muscle During Exercise. *J. Nutr.* 134, 1583S–1587S. doi:10.1093/jn/134.6.1583s
- Silverman, J. (2015). Single Cell Protein Feedkind: A Sustainable Approach to Meeting the Growing Protein Demand. *Aquafeed.* 7, 10–14.
- Skrede, A., Berge, G. M., Storebakken, T., Herstad, O., Aarstad, K. G., and Sundstøl, F. (1998). Digestibility of Bacterial Protein Grown on Natural Gas in Mink, Pigs, Chicken and Atlantic salmon. *Anim. Feed Sci. Technology.* 76, 103–116. doi:10.1016/S0377-8401(98)00208-9
- Spiller, M., Muys, M., Papini, G., Sakarika, M., Buyle, M., and Vlaeminck, S. E. (2020). Environmental Impact of Microbial Protein from Potato Wastewater as Feed Ingredient: Comparative Consequential Life Cycle Assessment of Three Production Systems and Soybean Meal. *Water Res.* 171, 115406. doi:10.1016/j.watres.2019.115406
- Statovci, D., Aguilera, M., MacSharry, J., and Melgar, S. (2017). The Impact of Western Diet and Nutrients on the Microbiota and Immune Response at Mucosal Interfaces. *Front. Immunol.* 8, 838. doi:10.3389/fimmu.2017.00838
- Stock, M., Hoefman, S., Kerckhof, F.-M., Boon, N., De Vos, P., De Baets, B., et al. (2013). Exploration and Prediction of Interactions Between Methanotrophs and Heterotrophs. *Res. Microbiol.* 164, 1045–1054. doi:10.1016/j.resmic.2013.08.006
- Strong, P. J., Xie, S., and Clarke, W. P. (2015). Methane as a Resource: Can the Methanotrophs Add Value? *Environ. Sci. Technol.* 49, 4001–4018. doi:10.1021/es504242n

- Tanaka, K., Ishizaki, A., Kanamaru, T., and Kawano, T. (1995). Production of Poly(D-3-Hydroxybutyrate) From CO₂, H₂, and O₂ by High Cell Density Autotrophic Cultivation of *Alcaligenes Eutrophus*. *Biotechnol. Bioeng.* 45, 268–275. doi:10.1002/bit.260450312
- Tikhomirova, T. S., and But, S. Y. (2021). Laboratory Scale Bioreactor Designs in the Processes of Methane Bioconversion: Mini-Review. *Biotechnol. Adv.* 47, 107709. doi:10.1016/j.biotechadv.2021.107709
- Turner, J., Sverdrup, G., Mann, M. K., Maness, P.-C., Kroposki, B., Ghirardi, M., et al. (2008). Renewable Hydrogen Production. *Int. J. Energ. Res.* 32, 379–407. doi:10.1002/er.1372
- Valverde-Pérez, B., Xing, W., Zachariae, A. A., Skadborg, M. M., Kjeldgaard, A. F., Palomo, A., et al. (2020). Cultivation of Methanotrophic Bacteria in a Novel Bubble-Free Membrane Bioreactor for Microbial Protein Production. *Bioresour. Technology.* 310, 123388. doi:10.1016/j.biortech.2020.123388
- van der Ha, D., Nachtergaele, L., Kerckhof, F.-M., Rameiyanti, D., Bossier, P., Verstraete, W., et al. (2012). Conversion of Biogas to Bioproducts by Algae and Methane Oxidizing Bacteria. *Environ. Sci. Technol.* 46, 13425–13431. doi:10.1021/es303929s
- Van Nevel, S., Koetzsch, S., Proctor, C. R., Besmer, M. D., Prest, E. I., Vrouwenvelder, J. S., et al. (2017). Flow Cytometric Bacterial Cell Counts Challenge Conventional Heterotrophic Plate Counts for Routine Microbiological Drinking Water Monitoring. *Water Res.* 113, 191. doi:10.1016/j.watres.2017.01.065
- Venables, W. N., and Ripley, B. D. (2002). *Modern Applied Statistics with S*. Fourth Edi. New York: Springer. doi:10.1007/978-0-387-21706-2
- Verbeeck, K., De Vrieze, J., Pikaar, I., Verstraete, W., and Rabaey, K. (2021). Assessing the Potential for Up-Cycling Recovered Resources From Anaerobic Digestion Through Microbial Protein Production. *Microb. Biotechnol.* 14, 897–910. doi:10.1111/1751-7915.13600
- Volova, T. G., and Barashkov, V. A. (2010). Characteristics of Proteins Synthesized by Hydrogen-Oxidizing Microorganisms. *Appl. Biochem. Microbiol.* 46, 574–579. doi:10.1134/S0003683810060037
- Walpole, S. C., Prieto-Merino, D., Edwards, P., Cleland, J., Stevens, G., and Roberts, I. (2012). The Weight of Nations: An Estimation of Adult Human Biomass. *BMC Public Health.* 12, 439. doi:10.1186/1471-2458-12-439
- Wang, Q., Garrity, G. M., Tiedje, J. M., and Cole, J. R. (2007). Naïve Bayesian Classifier for Rapid Assignment of rRNA Sequences into the New Bacterial Taxonomy. *Appl. Environ. Microbiol.* 73, 5261–5267. doi:10.1128/AEM.00062-07
- Wendlandt, K. D., Geyer, W., Mirschel, G., and Al-Haj Hemidi, F. (2005). Possibilities for Controlling a PHB Accumulation Process Using Various Analytical Methods. *J. Biotechnol.* 117, 119–129. doi:10.1016/j.jbiotec.2005.01.007
- Westhoek, H., Rood, T., van den Berg, M., Janse, J., Nijdam, D., Reudink, M., et al. (2011). The Protein Puzzle. The Consumption and Production of Meat, Dairy and Fish in the European Union. Available at: https://www.pbl.nl/sites/default/files/cms/publicaties/Protein_Puzzle_web_1.pdf (Accessed March 24, 2019).
- Whittenbury, R., Phillips, K. C., and Wilkinson, J. F. (1970). Enrichment, Isolation and Some Properties of Methane-Utilizing Bacteria. *J. Gen. Microbiol.* 61, 205. doi:10.1099/00221287-61-2-205
- Whittenbury, R., and Wilkinson, J. F. (1970). Enrichment, Isolation and Some Properties of Methane-Utilizing Bacteria. *J. Gen. Microbiol.* 61, 205–218. doi:10.1099/00221287-61-2-205
- WHO (2012). Global and Regional Food Consumption Patterns and Trends. Available at: https://www.who.int/nutrition/topics/3_foodconsumption/en/ (Accessed April 24, 2020).
- WHO/FAO/UNU (2007). *Protein and Amino Acid Requirements in Human Nutrition: Report of a Joint FAO/WHO/UNU Expert Consultation*. Geneva, Switzerland: World Health Organization, Food and Agriculture Organization of the United Nations and United Nations University.
- Wiebe, M. G. (2004). Quorn™ Myco-Protein - Overview of a Successful Fungal Product. *Mycologist.* 18, 17–20. doi:10.1017/S0269915X04001089
- Wu, G. (2014). Dietary Requirements of Synthesizable Amino Acids by Animals: A Paradigm Shift in Protein Nutrition. *J. Anim. Sci. Biotechnol.* 5, 1–12. doi:10.1186/2049-1891-5-34
- Xu, M., Zhou, H., Yang, X., Angelidaki, I., and Zhang, Y. (2020). Sulfide Restrains the Growth of *Methylocapsa Acidiphila* Converting Renewable Biogas to Single Cell Protein. *Water Res.* 184, 116138. doi:10.1016/j.watres.2020.116138
- Yazdian, F., and Hajizadeh, S. (2005). Production of Single Cell Protein from Natural Gas: Parameter Optimization and RNA Evaluation. *J. Biotechnol.* 3, 235–242. Available at: http://w.sid.ir/en/VEWSSID/J_pdf/92820050405.pdf.
- Yu, J. (2018). Fixation of Carbon Dioxide by a Hydrogen-Oxidizing Bacterium for Value-Added Products. *World J. Microbiol. Biotechnol.* 34, 89. doi:10.1007/s11274-018-2473-0

Conflict of Interest: The authors declare that the research was conducted in the absence of any commercial or financial relationships that could be construed as a potential conflict of interest.

Publisher's Note: All claims expressed in this article are solely those of the authors and do not necessarily represent those of their affiliated organizations, or those of the publisher, the editors and the reviewers. Any product that may be evaluated in this article, or claim that may be made by its manufacturer, is not guaranteed or endorsed by the publisher.

Copyright © 2021 Kerckhof, Sakarika, Van Giel, Muys, Vermeir, De Vrieze, Vlaeminck, Rabaey and Boon. This is an open-access article distributed under the terms of the Creative Commons Attribution License (CC BY). The use, distribution or reproduction in other forums is permitted, provided the original author(s) and the copyright owner(s) are credited and that the original publication in this journal is cited, in accordance with accepted academic practice. No use, distribution or reproduction is permitted which does not comply with these terms.