


ORIGINAL ARTICLE

Metagenomic strategies identify diverse integron-integrase and antibiotic resistance genes in the Antarctic environment

Verónica Antelo^{1,a} | Matías Giménez^{1,2,a}  | Gastón Azziz³ |
Patricia Valdespino-Castillo⁴ | Luisa I. Falcón^{5,6} | Lucas A. M. Ruberto^{7,8} |
Walter P. Mac Cormack^{7,8} | Didier Mazel^{9,10} | Silvia Batista¹

¹Laboratorio de Microbiología Molecular, Instituto de Investigaciones Biológicas Clemente Estable (MEC, Av. Italia 3318, Montevideo, CP 11600, Uruguay)

²Laboratorio de Genómica Microbiana, Institut Pasteur Montevideo. Mataojo 2020, Montevideo, Uruguay

³Laboratorio de Microbiología, Facultad de Agronomía, UdelaR. Av. Garzón 780. CP 12900, Montevideo, Uruguay

⁴Molecular Biophysics and Integrated Bioimaging Division, BSISB Program, Lawrence Berkeley National Laboratory, One Cyclotron Rd, Berkeley, CA 94720, USA

⁵Laboratorio de Ecología Bacteriana, Instituto de Ecología, Universidad Nacional Autónoma de México, CDMX, 04510, Mexico

⁶UNAM, Parque Científico y Tecnológico de Yucatán, 97302, Mexico

⁷Instituto Antártico Argentino. Av. 25 de Mayo 1143, San Martín, Buenos Aires, 1650, Argentina

⁸Cátedra de Biotecnología, Facultad de Farmacia y Bioquímica e Instituto Nanobiotec UBA-CONICET. Ave. Junín 956, Buenos Aires, 1113, Argentina

⁹Département Génomes et Génétique, Institut Pasteur, Unité Plasticité du Génome Bactérien, Paris, France

¹⁰CNRS, UMR3525, Paris, France

Correspondence

Matías Giménez. Laboratorio de Microbiología Molecular, Instituto de Investigaciones Biológicas Clemente Estable (MEC), Av. Italia 3318, CP11600. Montevideo, Uruguay.
Email: gimenezm720@gmail.com

Funding information

United Nations Development Programme, Grant/Award Number: 13/001

Abstract

The objective of this study is to identify and analyze integrons and antibiotic resistance genes (ARGs) in samples collected from diverse sites in terrestrial Antarctica. Integrons were studied using two independent methods. One involved the construction and analysis of *intl* gene amplicon libraries. In addition, we sequenced 17 metagenomes of microbial mats and soil by high-throughput sequencing and analyzed these data using the IntegronFinder program. As expected, the metagenomic analysis allowed for the identification of novel predicted *intl* integrases and gene cassettes (GCs), which mostly encode unknown functions. However, some *intl* genes are similar to sequences previously identified by amplicon library analysis in soil samples collected from non-Antarctic sites. ARGs were analyzed in the metagenomes using ABRicate with CARD database and verified if these genes could be classified as GCs by IntegronFinder. We identified 53 ARGs in 15 metagenomes, but only four were classified as GCs, one in MTG12 metagenome (Continental Antarctica), encoding an aminoglycoside-modifying enzyme (AAC(6')acetyltransferase) and the other three in CS1 metagenome (Maritime Antarctica). One of these genes encodes a class D β -lactamase (blaOXA-205) and the other two are located in the same contig. One is

^aThese authors contributed equally to this study

part of a gene encoding the first 76 amino acids of aminoglycoside adenylyltransferase (*aadA6*), and the other is a *qacG2* gene.

KEYWORDS

antibiotic resistance, bioinformatics, horizontal gene transfer, microbial genomics

1 | INTRODUCTION

Integrans are natural genetic platforms that incorporate, exchange, and express new genes. Through site-specific recombination events, they integrate open reading frames ensuring their correct expression. All integrans share a common functional structure composed of a stable platform associated with a variable region of GCs that encode accessory functions (Cambray et al., 2010).

The stable region contains an integrase *intl* gene that codes for a site-specific tyrosine recombinase (IntI). The enzyme catalyzes the insertion and excision of GCs (Stokes & Hall, 1989). This region also harbors a primary recombination site (*attI*) adjacent to *intl* where GCs are inserted (Collis et al., 1993), and a *P_c* promoter that regulates their expression. The *P_c* promoter is located in the coding region of the *intl* gene or between this gene and the *attI* site, and expression is oriented toward the site of integration (Collis & Hall, 1995; Jové et al., 2010). The variable region includes a gene array (GCs), each flanked by an *attC* site expressed under the control of *P_c*.

Integron studies were classically focused on isolates from clinical environments, using culture-dependent methods. However, the incorporation of new sequencing methods allowed access to much more information. Metagenomic studies have allowed for the identification of new integrase sequences showing that there is large genetic diversity. In addition, metagenomic dataset analysis revealed that there is an extensive pool of GCs encoding functions required for environmental adaptation and others, mostly of unknown function (Holmes et al., 2003). The main obstacles to the identification of GCs are the limited tools available to recognize and predict the identification of *attC* sites (Cury et al., 2016). Some strategies were designed to recognize *attC* sites of "classical" integrans (Stokes et al., 2001), although this is difficult because they exhibit a relatively high diversity (Cury et al., 2016). This has even allowed for encryption of these sequences within protein-coding sequences (Nivina et al., 2020).

Integrans are ancestral and usually stable structures that have played an essential role in bacterial genome evolution (Rowe-Magnus and Mazel, 2001), due to their GCs shuffling properties in times of stress (Guerin et al., 2009). Considering the presence of an *intl* gene, integrans have been found in 9–17% of genomes available in databases (Boucher et al., 2007; Cambray et al., 2010; Cury et al., 2016). They are distributed throughout Gram-negative bacteria, with the notable exception of α -proteobacteria, and are more prevalent among γ -proteobacteria (Cury et al., 2016).

Historically, integrans have been classified into two groups: chromosomal integrans (CIs) and mobile integrans (MIs), which are physically associated with transposons contained in conjugative plasmids (Mazel, 2006). Currently, CIs are termed as sedentary chromosomal integrans (SCIs), because MIs can also be found in chromosomes and the term could be confusing (Cury et al., 2016). SCIs share an evolutionary history, and their phylogeny reflects a pattern of vertical inheritance. For this reason, these integrans are not classified in classes such as MIs and are instead classified according to their host species (Cambray et al., 2011).

The first integrans were characterized at the end of the 1980s from a collection of bacterial isolates of clinical origin. It was then shown that integrans are commonly found in bacterial genomes. Analysis of integron diversity in natural environments indicates that they could play a fundamental role in the adaptation and evolution of these organisms. These studies were developed with samples from different environments and using different approaches. However, "extreme" environments like Antarctica have been relatively poorly explored (Ghaly et al., 2019; Gillings, 2014; Stokes et al., 2001).

The Antarctic convergence zone is classified into three biogeographical regions: Continental Antarctica, Maritime Antarctica, and Sub-Antarctica (Convey, 2010). These three regions are differentiated mainly by their average annual temperatures, rainfall, and winds, and are also associated with characteristic biota. The Continental region is considered an especially inclement zone and includes the McMurdo Dry Valleys which is a polar desert. The highest rainfall is recorded in Maritime Antarctica (400–600 mm/year), with average annual temperatures ranging between 1°C and –21°C. This region, with a less extreme climate than the Continental region, includes the NW of the Antarctic Peninsula and nearby islands. The Sub-Antarctica region includes several islands located between 35°S and 60°S. The climate of these islands enables the establishment of breeding sites for birds and marine mammals.

Our objective was to identify and analyze integrans and ARGs in microbial mat and soil samples collected in different sites of the Antarctic continent. For the analysis of integrans, we used two culture-independent methods. One of these strategies involved the construction and analysis of *intl* amplicon libraries from the soil. We also sequenced 17 metagenomes of microbial mats and soil by high-throughput next generation sequencing (NGS) and analyzed these metagenomic data using the IntegronFinder program, which allows *intl* and GC identification.

As expected, these analyses allowed us to identify a broad spectrum of *intl* sequences. The vast majority were not related to mobile integrons integrase sequences, although some sequences were similar to others previously recovered in amplicon libraries from soil samples of non-Antarctic environments. ARGs were analyzed in the 17 metagenomes using ABRicate with CARD database. We identified 53 ARGs by CARD, distributed in 15 metagenomes (except MTG3 and MTG4) and IntegronFinder identified three of these genes as GCs.

2 | EXPERIMENTAL PROCEDURES

2.1 | Construction of *Inti* amplicon library and DNA sequence analysis

Soil samples (Table 1) were collected in 50 mL sterile tubes and stored at -20°C (except during transport, in which were kept refrigerated on ice) until processing in the laboratory (IIBCE, Montevideo). The two samples, identified CP2, and PD2 are described in Table 1. DNA extraction was done using the ZR Soil Microbe DNA Microprep kit (Zymo Research®, USA) following the manufacturer's instructions. Purified DNA was used as a template in PCR reactions for *intl1* gene amplification (primers int1.F and int1.R) (484 bp) (Mazel et al., 2000). The protocol used for cloning PCR fragments was described previously by Antelo et al. (Antelo et al., 2015). Sequences obtained from MacroGen (Seoul, South Korea) (8 from PD2 and 14 from CP2) were analyzed following the protocol described by Antelo et al. (Antelo et al., 2015).

2.2 | Sampling sites for NGS metagenomic analysis

Microbial mat samples (14 samples of ~ 20 g) were collected from different sites in Maritime and Continental Antarctica, representing a latitudinal gradient (Table 2). Microbial mats develop during Austral summer in glacier and snow melting currents. These communities are benthic microbial assemblages of high diversity, dominated by cyanobacteria (Callejas et al., 2018; Valdespino-Castillo et al., 2018; Azziz et al., 2019). Soil samples (3 samples of ~ 60 g, from the upper portion of 10 cm deep, without snow cover) were collected on the Fildes peninsula during the Antarctic campaign of April 2015. Sampling sites included Antarctic Specially Protected Areas (ASPA) like Ardley Island (IA6; at ASPA 150), Halfthree-Point (HTP2; at ASPA 125a), and sites next to the septic system chamber of BCAA (CS1).

TABLE 1 Sampling sites for amplicon libraries of *intl* genes (Mazel et al., 2000)

Name of the sample	Campaign	Location	Site	Description
PD2	April/2015	62°09'03''S 58°56'27''W	Beach in front of Drake sea	Soil
CP2	February/2016	62°14'35'' S 58°39'99'' W	Potter creek	Soil

2.3 | Total DNA isolation and NGS metagenome sequencing

Metagenomic libraries were prepared with the Nextera DNA Flex library prep kit (Illumina, San Diego, CA) where fragments of total DNA (1 μg) were inserted into vectors and sequenced with whole-genome sequencing technology (HiSeq2 \times 150), at the Yale Center for Genomic Sciences. The data obtained for each metagenome had an average of 7.8 ± 2 Gb, which in total represented 109 Gb of sequenced DNA. The raw data passed through a quality filter and were assembled de novo using IDBA-UD, with k-mer sequences between 120 and 150 long (Peng et al., 2012). Metagenomes of soil samples were sequenced in MacroGen (Seoul, South Korea), using Illumina HiSeq 2500 technology.

2.4 | Bioinformatic analysis of NGS total metagenomes

IntegronFinder (<https://github.com/gem-pasteur/IntegronFinder>) (Cury et al., 2016) was used for the detection of integrons and their most distinctive components. The options used were *-local_max*, *--linear*, *attC_evalue 1* and *-func_annot*. Results obtained were classified as complete integrons, including an integron-integrase gene nearby *attC* site(s), In0 elements with just the integron-integrase gene, and CALIN (Cassette Lacking Integrase), as clusters of *attC* sites without *intl* genes. Genomic contexts of the results obtained by IntegronFinder were annotated by RAST (Aziz et al., 2008). SnapGeneViewer 4.2.11 program was used to visualize the integron's genomic context.

Once the presence of an integrase gene was confirmed, the relative abundance of the contig bearing that gene was calculated. The software bowtie2 was used for mapping the filtered reads against all contigs of each metagenome. The number of reads mapping against the contigs bearing an integrase was divided by the length of the contig to obtain the RPK value. That value was normalized per million reads in the metagenome and the paired-end nature of the reads was considered to express that value in fragments per kilobase of transcript per million reads mapped (FPKM).

To identify conserved motifs characteristic of integron integrases, amino acid sequences selected from this study were aligned against Intl reference sequences (classes 1, 2, 3, 4, and 5) (GenBank A.N.: Intl1, AAQ16665; Intl2, AAT72891; Intl3, AAO32355; Intl4, AAC38424; Intl5, AF180939). Tyrosine recombinases XerC from *Escherichia coli* (POA8P6) and XerD from *E. coli* (POA8P8), XerC from *Thiobacillus denitrificans* (WP011313040), and XerD from *T.*

TABLE 2 Geographic location of sampling sites used for NGS metagenomics analysis

Sample	Geographic reference and type of sample	Latitude	Longitude	Name of the contig_xxx
Drake(1)	King George Island (Fildes Peninsula, microbial mat)	62°09'30" S	58°56'31" W	MTG1_
Espejo(2)	King George Island (Fildes Peninsula, microbial mat)	62°09'59" S	58°58'33" W	MTG2_
HTP(3)	King George Island (Halfthree point, microbial mat)	62°12'14" S	58°57'16" W	MTG3_
Pista(4)	King George Island (next to Chilean Airport, microbial mat)	62° 10'0" S	58° 58'34" W	MTG4_
Carlini I(5)	King George Island (microbial mat)	62° 14'35" S	58° 40'39" W	MTG5_
Carlini II(6)	King George Island (microbial mat)	62° 14'34" S	58° 40'26" W	MTG6_
Esperanza(7)	Antarctic Peninsula (Trinity Peninsula, microbial mat)	63°28'13" S	57°12'3" W	MTG7_
Primavera(8)	Antarctic Peninsula (microbial mat)	64°09'22" S	60°57'30" W	MTG8_
San Martín(9)	Antarctic Peninsula (Fallieres Coast, microbial mat)	68°07'45" S	67°06'2" W	MTG9_
B012-2015-14(10)	McMurdo Dry Valleys (microbial mat)	78°01'24" S	163°55'03" E	MTG10_
B012-2015-15(11)	McMurdo Dry Valleys (microbial mat)	78°01'23" S	163°54'56" E	MTG11_
B012-2015-16(12)	McMurdo Dry Valleys (microbial mat)	78°01'23" S	163°54'07" E	MTG12_
B012-2015-16 Mid Good(13)	McMurdo Dry Valleys (microbial mat)	78°01'30" S	164°06'02" E	MTG13_
B012-2015-18(14)	McMurdo Dry Valleys (microbial mat)	77°39'40" S	163°05'31" E	MTG14_
CS1(15)	King George Island (septic chamber next to BCAA, soil)	62°11'35" S	58°54'19" W	CS1_
HTP2(16)	King George Island (Halfthree-point, soil)	62° 13' 09" S	58° 57' 09" W	HTP2_
IA6(17)	King George Island (Ardley Island, soil)	62° 12' 03" S	58° 55' 04" W	IA6_

denitrificans (WP018078134) were also included (Nunes-Düby et al., 1998). For the alignment, Mafft program version 3.717 (Katoh et al., 2002) was used. Visualization and editing were done with Aliview program version 1.20 (Larsson, 2014). Representative integrases of selected organisms carrying chromosomal and super-integrins were also included.

For the detection of total ARGs in the assembled metagenomes, ABRicate software (<https://github.com/tseemann/abricate>) was used along with the CARD database (<https://card.mcmaster.ca/>). This software runs a blast search which was filtered with 50% of coverage for the query sequence and 70% of identity for the alignment. Then, we verified if these genes could be identified as GCs using IntegronFinder.

2.5 | Phylogenetic analysis of Antarctic integrases including *IntI* reference sequences

Phylogenetic analysis of *IntI* included 46 amino acid sequences of good quality (considering complete ORFs and not located at the edges of the contigs) identified by IntegronFinder and 15 nonredundant sequences recovered from *intI* amplicon libraries, obtained in this and a previous study (Antelo et al., 2015). The analysis also

included 42 sequences of integrases from known organisms and XerC and XerD sequences of *E. coli* and *T. denitrificans*, which were used as external branches for the construction of the tree. Reference sequences were obtained from INTEGRALL—the Integron Database (Moura et al., 2009) (<http://integrall.bio.ua.pt>) and NCBI GenBank. All sequences were clustered to 90% of sequence identity using CD-HIT (Fu et al., 2012) to remove redundancy. Analysis was done using NGPhylogeny.fr in the Advanced Workflow option, including PhyML for tree inference (Maximum-likelihood method) (<https://ngphylogeny.fr/workflows/advanced/>). The tree was designed using Interactive Tree of Life (iTOL) v4 (Letunic & Bork, 2019).

3 | RESULTS

3.1 | Amplicon library analysis

King George Island (KGI) (25 de Mayo Island) in Maritime Antarctica is the largest island in the South Shetland archipelago. Amplicon libraries of *intI* genes were obtained from samples collected on this island (Table 1). Drake coast (PD2) and Potter Cove creek (CP2) contain a total of 22 *IntI* clones (8 in PD2, 14 in CP2). Some of these sequences were included for phylogenetic analysis discussed below.

Similar to previous studies (Antelo et al., 2015), analysis of amplicon libraries indicated that the primers used, designed to amplify class 1 *intl1*, are not specific for this class. This primer pair was designed using a limited database (Mazel et al., 2000) since at that time only sequences of clinical origin were available. However, we could identify 8 clones from CP2 highly similar (more than 99% identity in amino acid sequences) to the reference gene *Intl1_AAQ16665* of clinical origin. The phylogenetic tree shows that this group of similar sequences also includes the gene previously identified in the Antarctic isolate IA12 (Antelo et al., 2018) and the *intl1* gene from a complete integron in contig CS1_14211 (Figure 1). Finally, and according to the original design of this primer pair (Mazel et al., 2000), class 2 and class 3 *intl* genes were not amplified with this strategy.

3.2 | NGS metagenomic analysis

IntegronFinder was designed for the identification of integron elements, although the original analysis was restricted to complete

bacterial genomes, avoiding problems associated with assemblies of metagenomes or draft genomes (Cury et al., 2016). In this case, we used IntegronFinder for metagenome analysis (Table 2), with the limitations related to the length of reads and contig assembly. The metagenomes allowed us to identify a large diversity of integrase genes and associated GCs (Table 3). Most *intl* genes exhibited similarities with environmental integrases described from different geographical regions (Figure 1) (Rodríguez-Minguela et al., 2009). The relative quantification of integrase contigs consistently showed that those metagenomes with the highest richness of *intl* genes, related to the total number of predicted ORFs, were also those with the highest relative abundance of these genes assessed in fragments per Kilobase mapped (FPKM) (Table 3).

We could identify “Mobile Integron-related” (MI-related) *intl* genes phylogenetically related to class 2 (contigs CS1_17527 and CS1_57033, with more than 70% of amino acid sequence identity compared to AAT72891.1_Intl2), class 3 (contigs MTG5_31000, MTG5_52806, MTG9_2773, MTG9_4540, CS1_4254, CS1_2164, CS1_24080 and CS1_4987 with more than 70% of sequence

Tree scale: 1

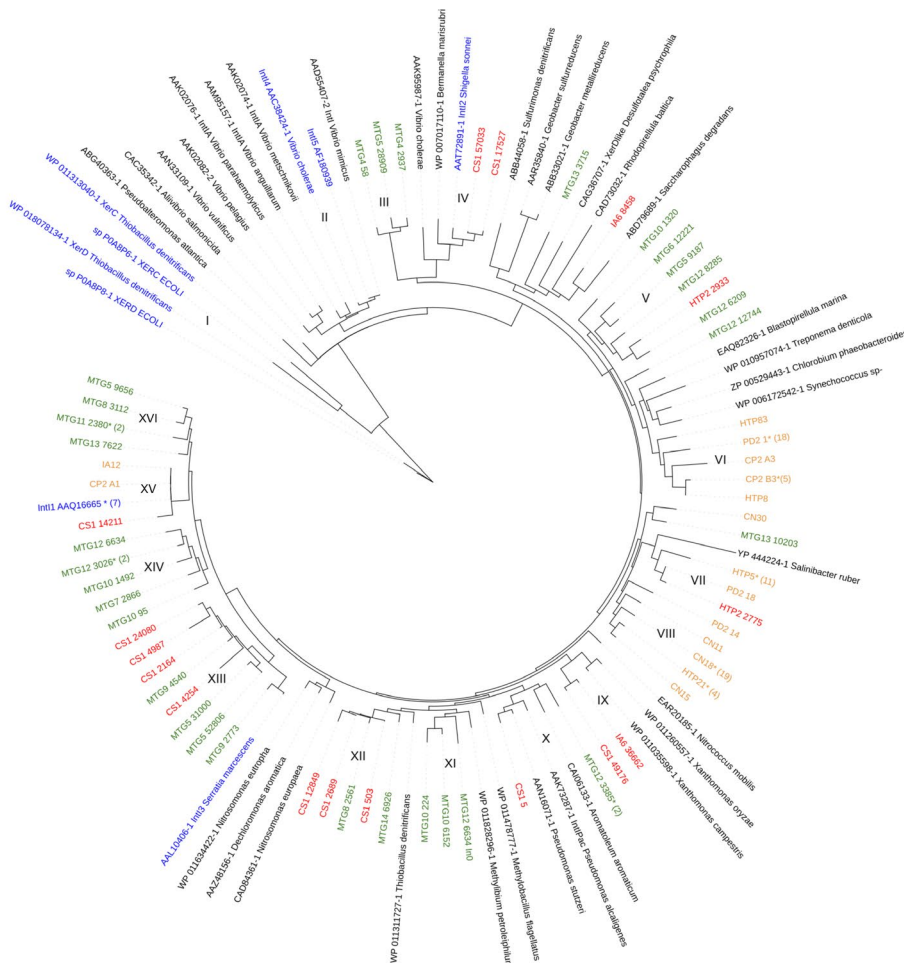


FIGURE 1 Phylogenetic tree of integrase protein sequences described in this work along with reference integrases. The different clusters are identified with Roman numbers. Classical reference sequences are written in blue (*Intl1*, *Intl2*, *Intl3*, *Intl4*, *Intl5*, *XerC*, and *XerD* sequences). Sequences recovered by NGS microbial mat metagenome analysis are written in green and by NGS soil metagenome analysis are written in red. Amplicon library sequences are written in orange. Sequences marked with * represent a cluster of sequences with more than 90% identity, the number of sequences in the cluster is shown between brackets

TABLE 3 Identification of integron elements in Antarctic metagenomes using IntegronFinder

Name of the sample	No of contigs ^a		Complete integrons	In0	CALIN	FPKM ^b
Drake(1)	14345	0	0	42		-
Espejo(2)	11311	0	1	149		nd ^c
HTP(3)	10227		0	0	53	-
Pista(4)	19554		0	2	43	0,0018257
Carlini I(5)	62551	3	4	119		0,002930121
Carlini II(6)	47446		1	0	143	0,000534606
Esperanza(7)	35849		0	1	104	0,002127371
Primavera(8)	53174		2	1	114	0,00293502
San Martín(9)	17447	1	1	44		0,004543001
B012-2015-14(10)	18089		3	2	205	0,019193791
B012-2015-15(11)	24919	1	0	94		0,000939058
B012-2015-16(12)	23874		6	1	284	0,017899739
B012-2015-16 MidGood(13)	23997	4	1	145		0,005845539
B012-2015-18(14)	34862		1	0	70	0,001345873
CS1(15)	68030	10	3	283		0,007584958
HTP2(16)	28119		1	2	85	0,000933934
IA6(17)	54969	2	0	103		0,000127014

^aNumber of contigs obtained from each metagenome.

^bRelative abundance of the contig bearing that *intl* gene.

^cNot determined

identity compared to AAL10406.1_IntI3), and class 1 reference genes (CS1_14211, 88% identity to AAQ16665_IntI1). Using these strategies, amplicon library, and NGS analysis, we found that "MI-related" *intl* genes represent about 21% of the total (13 from a total of 61). The analysis of the phylogenetic tree obtained with these recovered environmental sequences confirms that criteria for the classification of integrons should consider the high diversity of integrase sequences found in the environment.

3.3 | Identification of *inti* genes and associated GCs

Table 3 summarizes results obtained with Integron Finder for analysis of these metagenomes. A total of 54 *intl* genes were found, 35 were classified as complete integrons including one *intl* gene and at least one *attC* site. The remaining 19 *intl* genes fell into the In0 group (empty integron) and the rest of the elements were classified as CALIN, a region containing a Cluster of *attC* sites Lacking INtegrase nearby. CALIN could be associated or not with a potential GC (2080 CALIN identified) (Table 3). IntegronFinder also annotates potential coding sequences (CDS) associated with these element classes. Then, a total of 3431 CDS were annotated within the region of 200 bp next to each integron element found in our dataset (*intl* and *attC* sites), including the 54 *intl* genes.

Alignment of Intl deduced amino acid sequences identified in this study with selected representative integrase sequences, allowed for recognition of conserved motifs characteristic of the tyrosine

recombinase family. These motifs include four highly conserved residues (RHRY), Box I, Box II, Patches I, II, and III regions (Nunes-Düby et al., 1998). The additional domain of around 35 aa, specific to integron integrases, was also identified (Messier & Roy, 2001; Nunes-Düby et al., 1998). Essential amino acid residues for DNA binding and recombination processes are present in most sequences, suggesting that they represent functional enzymes (Messier & Roy, 2001; Macdonald et al., 2006) (Figure 2a).

On the other hand, we found that three Intl sequences in NGS metagenomes from soil (CS1_12849, CS1_2689, CS1_503) and four from microbial mats (MTG5_28909, MTG8_2561, MTG10_95, and MTG14_6926) exhibited an additional extended domain of variable length, which was located after Patch III. This type of insertion was identified previously (Rodríguez-Minguela et al., 2009) in environmental integrons recovered from diverse geographical regions. However, the implication of this type of insertion in integrase activity is unknown (Rodríguez-Minguela et al., 2009) (Figure 2b).

3.4 | Annotation of antibiotic resistance genes

Using the CARD database, ARGs were detected in most of the metagenomes analyzed (53 genes in 15 metagenomes) (Figure 3), which did not show a high richness of ARGs compared to other environmental samples (Van Goethem et al., 2018). However, in sample CS1, collected next to the septic chamber of BCAA we could identify 37 different ARGs. These ARGs were not identified as GCs by

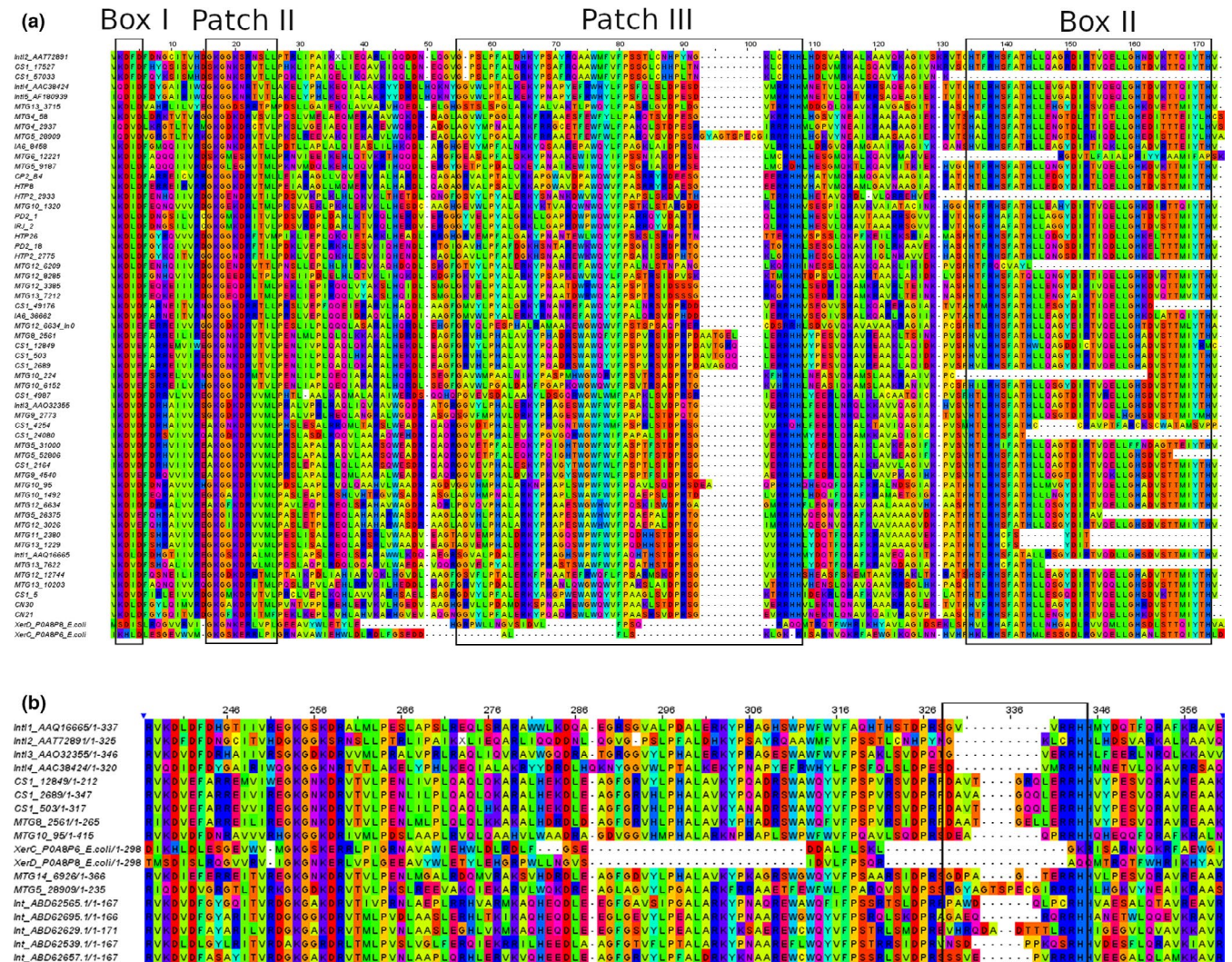


FIGURE 2 (a) Amino acid sequence alignment (SeaView) of IntIs recovered by amplicon library and NGS analysis. The first seven sequences were included as a reference. (b) Amino acid sequence alignment including the region with an additional domain, identified in some environmental IntIs

IntegronFinder, except *blaOXA-205* gene, present in contig CS1_503 (Appendix Figure A1a) as part of a complete integron and a fragment of *aadA6* gene associated with a complete integron in CS1_14211 (Appendix Figure A1b). This integron also included a *qacG2* gene cassette, identified by Blastn. In the same metagenome, we could find several determinants of macrolides resistance like *mph*, *mef*, OPM, and *erm*. In terms of geographic distribution, *dfrE* (dihydrofolate reductase) and *vatF* (streptogramin A acetyltransferase) genes seem to be the most prevalent in the metagenomes analyzed, since they were detected in 8 and 7 different samples, respectively (Figure 3). According to this, *dfrE*, *vatF*, and macrolide resistance genes were not identified as GCs, although the length of contigs could be a limitation that does not allow us to affirm it with certainty.

Finally, a second ARG located in MTG12 was identified in a region classified as CALIN by IntegronFinder (contig MTG12_18109), encoding an aminoglycoside-modifying enzyme (100% identity to AAC(6')-acetyltransferase) (Figure A2).

3.5 | Phylogenetic analysis of Inti sequences and description of their genomic context

This analysis included 61 IntI Antarctic sequences identified in this work and previous studies (Antelo et al., 2015, 2018). We used 46 IntI sequences of good quality (considering complete ORFs and not located at the edges of the contigs), from those identified by NGS metagenomic analysis and 6 nonredundant IntIs recovered by amplicon library analysis obtained in this study. We also incorporated 9 Antarctic sequences obtained in previous studies (Antelo et al., 2015). In addition, 42 reference sequences and others recovered from the database were also included for analysis. IntI sequences identified in this study exhibited great diversity (less than 40% overall sequence identity at amino acid level) distributed throughout the tree in different groups. Likewise, several of our IntIs were not phylogenetically related to reference sequences and were grouped forming separate clades (Figure 1).

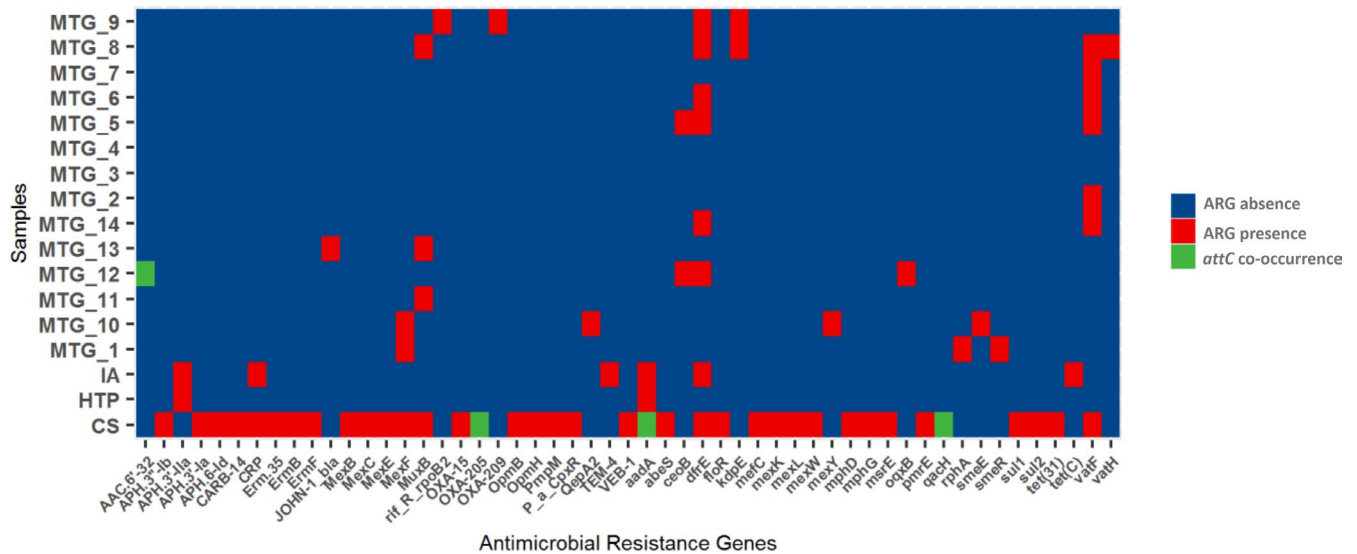


FIGURE 3 Heatmap of antimicrobial resistance genes in metagenomic assemblies and its association to *attC* sequences within the same contig

Previously published analyses showed that all *IntI* integrase sequences were separate from *XerC* and *XerD* recombinases, the closest group within the tyrosine recombinase family (Nunes-Düby et al., 1998) (Group I, Figure 1). In addition, clades including integrases of class 1 (*IntI1*) (Group XV) and those with class 3 (*IntI3*) (Group XIII) are related to each other and distinct from the clade including class 2 (*IntI2*) (Group III), which form a separate group (Nemergut et al., 2008). Likewise, integrases from the *Vibrio* genus form a group separated from the rest of *IntI* integrases (Rowe-Magnus and Mazel, 2001) (Group II). From a total of 61 *IntI* integron sequences analyzed in this study, only 13 sequences were related to mobile *IntI* (*IntI1*, Group XV with 3 sequences; *IntI2*, Group III with 2 sequences; and *IntI3*, Group XIII with 8) with sequence identity higher than 70% at the amino acid level to reference *IntI* sequences.

3.6 | Groups of sequences identified by phylogenetic analysis

XerC and *XerD* sequences, used as external branches, are identified as **Group I**, and reference sequences *Int4* and *Int5* are grouped with those of *Vibrio metschnikovii* and *V. anguillarum*, forming **Group II**. Reference *IntI2* from *Shigella sonnei* of clinical origin belongs to **Group III** together with two *IntI* sequences of NGS metagenomes obtained from soil collected next to BCAA (CS1). Compared to *IntI2*, these two sequences exhibit an identity higher than 70%. Contig CS1_57033 contains one *Int0* and CS1_17527 has one *attC* site and one ORF that would encode a bacterioferritin (COG2193). The sequences related to *IntI* class 3 (**Group XIII**) form two subgroups, one includes MTG9_2773 and class 3 *IntI* reference sequence of *Serratia marcescens*. The other subgroup includes seven *IntI* sequences recovered from Antarctic microbial mat and soil samples (NGS metagenomes) (MTG5_52806, MTG5_31000, CS1_4254,

MTG9_4540, CS1_2164, CS1_24080, CS1_4987). All these eight sequences exhibit identities greater than 70% compared to *IntI3*. **Group XV** includes 10 highly similar sequences that clustered with *intI1* AAQ16665 as the reference sequence (more than 88% identity). This cluster includes eight almost identical sequences obtained by amplicon libraries from Potter creek soil (CP2) which we considered redundant and represented by CP2-A1. This group also includes the *IntI* sequence identified in CS1 metagenome (CS1_14211) (88% sequence identity compared to *IntI1*) and IA12, identified previously in an Antarctic *Enterobacteria* isolate. Class 1 integrases appear to be almost identical with each other, which is consistent with that reported in the literature, which illustrates the great similarity exhibited by clinical class 1 integrases.

Groups X and XII are related. The first includes a reference sequence of *Methylobium petroleiphilum* (WP011828296) and three integrase sequences from Continental microbial mats from MTG10 and MTG12. The second one comprises sequences recovered from Maritime Antarctic soils (NGS metagenome) CS1_2689, CS1_12849, CS1_503, and MTG8_2561. Contig CS1_12849 has two *attC* sites and no associated ORFs, while CS1_503 contains three *attC* sites and two ORFs, one encodes, according to Resfam, a putative class D β -lactamase (Resfam: RF0056) and the other a hypothetical protein (Figure A1a). The reference branch includes an *IntI* sequence of *Thiobacillus denitrificans* (WP_011311727).

Group X includes the *IntI* sequence of *Pseudomonas stutzeri* (AAN16071) and CS1_5 of soil (Maritime Antarctica), related to *IntI* from one unclassified bacterium of the Order Pseudomonadales (OHC29044.1) (Anantharaman et al., 2016). This group contains the longest integron identified in this study. CS1_5 has 15 *attC* sites and six ORFs (Appendix Figure A1c). The Integrons of the genus *Pseudomonas* are present only in a small number of species and may have been acquired through horizontal gene transfer at a late period in their evolutionary history. The number and composition of

GCs vary between species; they can range from ten GCs (*P. stutzeri*) to more than 32 (*P. alcaligenes*) (Boucher et al., 2007). All ORFs identified in CS1_5 encode hypothetical proteins, except one ORF (385 bp) (not a GC) that would encode a penicillin acylase II (EC. 3.5.1.11). The number of *attC* sites ($n = 15$) present in the CS1_5 integron and its phylogenetic relationship with species of the genus *Pseudomonas* sp. that carry integrons in their chromosome suggest that it is a chromosomal integron.

4 | DISCUSSION

In this study, we used IntegronFinder to identify genetic elements of integrons by NGS data analysis of Antarctic soil and microbial mat metagenomes collected from different sites on the continent. We also used samples of soil collected from other sites of Antarctica for the construction of amplicon libraries of *intl* integron-integrase genes, using a pair of primers previously designed by Mazel et al. (2000). All recovered *Intl* deduced amino acid sequences were filtered by domain conservation analysis. Several novel results were obtained. First, although *intl* gene search tools were used in samples of different origins, the sequences obtained from each approach were different, according to the phylogenetic analysis (Figure 1). Only two groups included sequences obtained using both strategies. Group VII identified in the phylogenetic tree (Figure 1), contains two sequences, one obtained by NGS at Halfthree Point (HTP2_2775) and the other by amplicon library from a coastal area in the Drake sea (PD2_18), both from the Fildes peninsula (KGI). Besides, Group XV includes *intl* sequences obtained by amplicon libraries in this study (CP2) and one identified by NGS analysis of the CS1 metagenome. However, other groups identified in the phylogenetic tree contain sequences obtained from samples of diverse origins but using the same data collection strategy. For example, Group XVI contains sequences obtained from samples collected in KGI (MTG_5) and others in the Antarctic peninsula (MTG_8) and Mac Murdo Dry Valleys (MTG_11 and MTG_13), but all obtained by NGS data analysis.

As mentioned previously, we could identify “MI-related” class 1 *intl* genes by NGS data analysis from one sample collected from one site exposed to human influence (CS1 metagenome) and by amplicon library with *intl1* primers (Mazel et al., 2000), but identifying also, in this case, other diverse integrase genes. Previous studies have proposed that the relative abundance of “MI-related” *intl1* genes would be used as a proxy for anthropogenic pollution (Gillings et al., 2015; Zheng et al., 2020). These genetic platforms are usually linked to genes conferring resistance to antibiotics, disinfectants, and heavy metals, and they seem to be fixed by human selection. Mazel et al. (2000) designed this primer pair aimed at amplifying *intl1* genes with relative specificity, avoiding the amplification of class 2 and 3 *intl* genes. Databases available at that time were relatively small and reduced to clinical isolates. Then, by including environmental samples as templates for amplification, it was later established that these primers had a lower specificity, being able to amplify integrase genes

with a spectrum of diversity greater than expected (Antelo et al., 2015). However, we estimate that these primers have some specificity to “MI-related” class 1 integrases, since “MI-related” class 2 and 3 *intl* genes were not recovered by PCR, but two ORFs similar to class 2 *intl* genes were identified by NGS in CS1 metagenome and 8 ORFs similar to class 3 *intl* genes in CS1, MTG5 (next to Carlini base) and MTG9 (next to San Martín base) metagenomes.

The profile of integrase genes identified in these Antarctic communities is different from that found in samples of sewage water and beaches in a previous study (Fresia et al., 2019). In that work, the presence of integrase genes was also analyzed using IntegronFinder as a search tool. They found a high prevalence of “MI-related” integrase genes in sewage (74%) and lower in beach (24%) samples. In that study, 90% of class 1, 2, and 3 “MI-related” integrase sequences were contained in sewage samples and 61% of these integrons were associated with ARGs and characteristic *attC* sites. These resistance GCs, analyzed with Abricate using CARD and VFDB (Chen et al., 2005) as databases, were only identified in integrons from sewage samples.

In our case, using arbitrary thresholds, we could identify “MI-related” integrase genes in 25% of samples (5 in a total of 20 samples), including soil and microbial mats. From this group, 32% of these genes were identified in the presumptive “contaminated” sample obtained from soil next to the septic chamber in BCAA (CS1). In this way, finding coherent identity thresholds for integrase sequence classification could be a good way to take into account the sequence diversity derived from metagenomic analysis. This could also be useful to compare with other works and gain insight into its distribution and occurrence in different environments (Roy, et al. 2021, Zhang et al., 2018). Also, ARGs were identified with ABRicate using the CARD database. Although we used low identity and coverage thresholds, there could be a bias in the method used as we looked for ARGs using CARD database with mainly “clinical” resistance genes, which are not expected to be widely present in pristine Antarctic environments. In addition, Antarctic environmental communities could be a reservoir of non-characterized antimicrobial resistance genes (Azziz et al., 2019). Only three GCs could be identified as ARGs using this tool, one in CS1 metagenome, encoding class D β -lactamase (bla-OXA-205) in a complete integron associated with an *Intl* sequence similar to that of *T. denitrificans*. The second one was a fragment of a gene found also in the CS1 metagenome (76 amino acids), encoding an aminoglycoside adenyltransferase (*aadA6*). The other GC was located in a CALIN of MTG12 and encoded an aminoglycoside-modifying enzyme (AAC(6')-acetyltransferase) (100% identity to AAC(6')-32). We also used the Resfams database with IntegronFinder to functionally characterize CDSs next to *attC* sites (in CALIN and complete integrons). With this strategy, IntegronFinder identified a total of 26 GCs as antibiotic resistance genes including blaOXA-205, located in the complete integron of contig CS1_503. This gene was also identified using the ABRicate-CARD strategy. The rest of the resistance genes considered as potential GCs by IntegronFinder belong to CALIN elements, and they were not identified using the ABRicate-CARD strategy.

CS1 metagenome, sequenced from a sample of soil collected next to BCAA, showed the highest richness of ARGs (in relation to the total number of ORFs), which has also been reported in other studies (Rabbia et al., 2016; Jara et al., 2020). In addition, CS1 was the only one in which we were able to detect human fecal contamination using the reference genome of Crassphage phage as a biomarker (Dutilh et al., 2014). As previously shown, the high concentration of ARGs in the environment could be explained by human fecal contamination (Karkman et al., 2019). As expected, Antarctic scientific bases impact the surrounding environment. Searching for ARGs in this metagenome, we could find several macrolide resistance genes that involve different resistance mechanisms (*Msr*, *pmr*, *Emr*, *mph*, *mef*). Recent studies have shown that not only macrolide resistance genes but also low concentrations of macrolide antibiotics could be detected in water samples nearby Chilean, Russian, and Chinese scientific bases in King George Island (Hernández et al., 2019). These concentrations of antibiotics in the environment are not sufficient to promote selection for resistance genes. However, there is evidence from different studies that human presence in Antarctica could lead to a release of macrolide resistance genes to the environment (Rabbia et al., 2016; Jara et al., 2020).

In relation to resistance genes, *vat* encodes a streptogramin A acetyltransferase which results in resistance to drugs of the group of streptogramins. These genes have been extensively identified, particularly in strains of *Enterococcus* spp. resistant to macrolides (Werner et al., 2002). However, there are no reports of the presence of the *vatF* gene in the Antarctic environment. Yuan et al. (2019) found macrolide resistance genes in soil samples, but all of them encoded efflux pumps rather than acetyltransferases. Similarly, Zaikova et al. (2019) found macrolides efflux pumps in 5 assembled genomes recovered from fossil microbial mats, but not *vat* genes. Also, Fitzpatrick & Walsh (2016) performed a meta-analysis of metagenomes recovered from different environments, identifying 11 non-efflux-pump-mediated genes that conferred resistance to macrolides in 23 metagenomes, but none in the metagenome of an Antarctic aquatic sample, included in the search. Therefore, the presence of *vatF* genes in 7 of our metagenomes is intriguing. Additional experiments should be performed to evaluate whether these genes are functional.

The family of *dfr* genes encodes dihydrofolate reductases that confer resistance to trimethoprim. In our study, we identified *dfrE* genes in 8 of the 17 Antarctic metagenomes analyzed. This variant of the *dfr* gene was previously identified in clinical isolates of *Enterococcus faecalis* (Coque et al., 1999). This gene is considered to be intrinsic in *E. faecalis* and confers resistance to trimethoprim in cells of *E. coli* carrying several copies of the gene. Trimethoprim resistance has been already found in Antarctic bacterial isolates (Rabbia et al., 2016), including variants of *dfrA14* (Antelo et al., 2018) (associated with class 1 integron) and *dfrA6* (Jara et al., 2020) (not determined the association to integrons). Finally, the presence of trimethoprim has been also confirmed in Antarctic sea samples (Hernández et al., 2019), a fact that could explain the occurrence of this gene in at least some of our metagenomes.

We could find several ARGs that are commonly found in the environment such as variants of aminoglycoside-modifying enzymes AAC and APH. We could also detect other resistance genes that have been linked to clinical pathogens like blaVEB-1. Another interesting gene is blaOXA-209 which was first described in plasmids from isolates of *Riemerella anatipestifer* in diseased birds (Chen et al., 2012). This could have a link to the Antarctic environment as in this place most of the wildlife is composed of different species of birds. Birds have already been linked to the spread of ARGs in previous studies (Rabbia et al., 2016). We have also found several genes that act together like the Mex operon. Most of them were sequenced from the same sample and could be part of the same genome, although they were found in different contigs.

The sampled sites showed different antimicrobial resistance profiles. If we observe only the metagenomes sequenced from the Fildes peninsula, we could distinguish sites with a high richness of ARGs and others where we could not detect them at all. This suggests that the presence of “clinically-derived” ARGs is patchy at the landscape and that there are certain factors that influence their presence. Sewage waters derived from human activity have already been described as one of these factors. In this work, the sewage impacted site could also be associated with the presence of integrons bearing antibiotic resistance GCs. In the rest of the samples, we could detect a wide diversity of integrases but not directly associated with known antimicrobial resistance functions. Therefore, the lack of association between ARGs and integrons in the samples analyzed supports the idea that evolutionary mechanisms that contribute to select resistance genes in a population are related to environmental pressures.

ETHICS STATEMENT

None required.

ACKNOWLEDGMENTS

We want to thank the Instituto Antártico Uruguayo and staff of the Base Científica Antártica Artigas for logistic support. Funding for this research was awarded through the PNUD-URU program (project No. 13/001) and the AMEXCID International Cooperation program with Argentina. This work was also supported by PEDECIBA (Programa de Desarrollo de Ciencias Básicas) and ANII (Agencia Nacional de Investigación e Innovación). Technical support is acknowledged to O. Gaona (UNAM).

CONFLICT OF INTEREST

None declared.

AUTHOR CONTRIBUTIONS

Verónica Antelo: Conceptualization (lead); Data curation (lead); Formal analysis (lead); Investigation (lead); Methodology (lead); Resources (equal); Software (equal); Supervision (lead); Validation (lead); Visualization (equal); Writing-original draft (equal); Writing-review & editing (lead). **Matías Giménez:** Conceptualization (equal); Data curation (lead); Formal analysis (lead); Investigation (equal); Methodology (lead); Resources (equal); Software (lead);

Supervision (equal); Validation (lead); Visualization (lead); Writing-original draft (equal); Writing-review & editing (lead). **Gastón Azziz**: Conceptualization (equal); Data curation (equal); Formal analysis (equal); Investigation (supporting); Methodology (equal); Software (equal); Supervision (supporting); Validation (equal); Visualization (supporting); Writing-original draft (equal); Writing-review & editing (equal). **Patricia Valdespino**: Data curation (supporting); Funding acquisition (equal); Methodology (equal); Project administration (equal); Resources (equal); Supervision (equal); Writing-review & editing (equal). **Luisa Falcón**: Funding acquisition (lead); Investigation (equal); Project administration (lead); Resources (lead); Supervision (equal); Writing-review & editing (equal). **Lucas Ruberto**: Resources (supporting); **Walter MacCormack**: Funding acquisition (supporting); Resources (equal). **Didier Mazel**: Formal analysis (equal); Writing-review & editing (equal). **Silvia Beatriz Batista**: Conceptualization (lead); Formal analysis (lead); Funding acquisition (lead); Investigation (lead); Methodology (lead); Project administration (lead); Resources (lead); Software (supporting); Supervision (lead); Validation (lead); Visualization (equal); Writing-original draft (lead); Writing-review & editing (lead).

DATA AVAILABILITY STATEMENT

Contigs analyzed from Antarctic samples are deposited in NCBI BioProject PRJNA734336: <https://www.ncbi.nlm.nih.gov/bioproject/PRJNA734336> with accession numbers from MZ590516 to MZ590563.

ORCID

Matías Giménez  <https://orcid.org/0000-0002-6267-9106>

REFERENCES

- Anantharaman, K., Brown, C. T., Hug, L. A., Sharon, I., Castelle, C. J., Probst, A. J., Thomas, B. C., Singh, A., Wilkins, M. J., Karaoz, U., Brodie, E. L., Williams, K. H., Hubbard, S. S., & Banfield, J. F. (2016). Thousands of microbial genomes shed light on interconnected biogeochemical processes in an aquifer system. *Nature Communications*, 7(1), <https://doi.org/10.1038/ncomms13219>
- Antelo, V., Guerout, A. M., Mazel, D., Romero, V., Sotelo-Silveira, J., & Batista, S. (2018). Bacteria from Fildes Peninsula carry class 1 integrons and antibiotic resistance genes in conjugative plasmids. *Antarctic Science*, 30(1), 22–28. <https://doi.org/10.1017/S0954102017000414>
- Antelo, V., Romero, H., & Batista, S. (2015). Detection of integron integrase genes on King George Island, Antarctica. *Advance Polar Science*, 26, 30–37.
- Aziz, R. K., Bartels, D., Best, A. A., DeJongh, M., Disz, T., Edwards, R. A., Formsma, K., Gerdes, S., Glass, E. M., Kubal, M., Meyer, F., Olsen, G. J., Olson, R., Osterman, A. L., Overbeek, R. A., McNeil, L. K., Paarmann, D., Paczian, T., Parrello, B., ... Zagnitko, O. (2008). The RAST Server: rapid annotations using subsystems technology. *BMC Genomics*, 9, 75. <https://doi.org/10.1186/1471-2164-9-75>
- Azziz, G., Giménez, M., Romero, H., Valdespino-Castillo, P. M., Falcón, L. I., Ruberto, L. A. M., Mac Cormack, W. P., & Batista, S. (2019). Detection of presumed genes encoding beta-lactamases by sequence based screening of metagenomes derived from Antarctic microbial mats. *Frontiers of Environmental Science & Engineering*, 13, 1–12. <https://doi.org/10.1007/s11783-019-1128-1>
- Boucher, Y., Labbate, M., Koenig, J. E., & Stokes, H. W. (2007). Integrons: Mobilizable platforms that promote genetic diversity in bacteria. *Trends in Microbiology*, 15, 301–309. <https://doi.org/10.1016/j.tim.2007.05.004>
- Callejas, C., Azziz, G., Souza, E. M., Gill, P. R., & Batista, S. (2018). Prokaryotic diversity in four microbial mats on the Fildes Peninsula, King George Island, maritime Antarctica. *Polar Biology*, 41(5), 935–943. <https://doi.org/10.1007/s00300-018-2256-y>
- Cambray, G., Guerout, A.-M., & Mazel, D. (2010). Integrons. *Annual Review of Genetics*, 44, 141–166. <https://doi.org/10.1146/annurev-genet-102209-163504>
- Cambray, G., Sanchez-Alberola, N., Campoy, S., Guerin, É., Da Re, S., González-Zorn, B., Ploy, M.-C., Barbé, J., Mazel, D., & Erill, I. (2011). Prevalence of SOS-mediated control of integron integrase expression as an adaptive trait of chromosomal and mobile integrons. *Mobile DNA*, 2, 6. <https://doi.org/10.1186/1759-8753-2-6>
- Chen, L., Yang, J., Yu, J., Yao, Z., Sun, L., Shen, Y., & Jin, Q. (2005). VFDB: A reference database for bacterial virulence factors. *Nucleic Acids Research*, 33(Database issue), D325–D328. <https://doi.org/10.1093/nar/gki008>
- Chen, Y.-P., Lee, S.-H., Chou, C.-H., & Tsai, H.-J. (2012). Detection of florfenicol resistance genes in *Riemerella anatipestifer* isolated from ducks and geese. *Veterinary Microbiology*, 154, 325–331. <https://doi.org/10.1016/j.vetmic.2011.07.012>
- Collis, C. M., Grammaticopoulos, G., Briton, J., Stokes, H. W., & Hall, R. M. (1993). Site-specific insertion of gene cassettes into integrons. *Molecular Microbiology*, 9, 41–52. <https://doi.org/10.1111/j.1365-2958.1993.tb01667.x>
- Collis, C. M., & Hall, R. M. (1995). Expression of antibiotic resistance genes in the integrated cassettes of integrons. *Antimicrobial Agents and Chemotherapy*, 39, 155–162. <https://doi.org/10.1128/AAC.39.1.155>
- Convey, P. (2010). Terrestrial biodiversity in Antarctica - recent advances and future challenges. *Polar Science*, 4, 135–147. <https://doi.org/10.1016/j.polar.2010.03.003>
- Coque, T. M., Singh, K. V., Weinstock, G. M., & Murray, B. E. (1999). Characterization of dihydrofolate reductase genes from trimethoprim- susceptible and trimethoprim-resistant strains of *Enterococcus faecalis*. *Antimicrobial Agents and Chemotherapy*, 43, 141–147.
- Cury, J., Jové, T., Touchon, M., Néron, B., & Rocha, E. P. (2016). Identification and analysis of integrons and cassette arrays in bacterial genomes. *Nucleic Acids Research*, 44, 4539–4550. <https://doi.org/10.1093/nar/gkw319>
- Dutilh, B. E., Cassman, N., McNair, K., Sanchez, S. E., Silva, G. G. Z., Boling, L., Barr, J. J., Speth, D. R., Seguritan, V., Aziz, R. K., Felts, B., Dinsdale, E. A., Mokili, J. L., & Edwards, R. A. (2014). ARTICLE A highly abundant bacteriophage discovered in the unknown sequences of human faecal metagenomes. *Nature Communications*. <https://doi.org/10.1038/ncomms5498>
- Fitzpatrick, D., & Walsh, F. (2016). Antibiotic resistance genes across a wide variety of metagenomes. *FEMS Microbiology Ecology*, 92, 1–8. <https://doi.org/10.1093/femsec/fiv168>
- Fresia, P., Antelo, V., Salazar, C., Giménez, M., D'Alessandro, B., Afshinnekoo, E., Mason, C., Gonnet, G. H., & Iraola, G. (2019). Urban metagenomics uncover antibiotic resistance reservoirs in coastal beach and sewage waters. *Microbiome*, 7, 1–9. <https://doi.org/10.1186/s40168-019-0648-z>
- Fu, L., Niu, B., Zhu, Z., Wu, S., & Li, W. (2012). CD-HIT: Accelerated for clustering the next-generation sequencing data. *Bioinformatics*, 28, 3150–3152. <https://doi.org/10.1186/s40168-019-0648-z>
- Ghaly, T. M., Geoghegan, J. L., Alroy, J., & Gillings, M. R. (2019). High diversity and rapid spatial turnover of integron gene cassettes in soil. *Environmental Microbiology*, 21, 1567–1574. <https://doi.org/10.1111/1462-2920.14551>

- Gillings, M. R. (2014). Integrons: Past, present, and future. *Microbiology and Molecular Biology Reviews*, 78, 257–277. <https://doi.org/10.1128/MMBR.00056-13>
- Gillings, M. R., Gaze, W. H., Pruden, A., Smalla, K., Tiedje, J. M., & Zhu, Y.-G. (2015). Using the class 1 integron-integrase gene as a proxy for anthropogenic pollution. *ISME J*, 1269–1279. <https://doi.org/10.1038/ismej.2014.226>
- Guerin, E., Cambray, G., Sanchez-Alberola, N., Campoy, S., Erill, I., Da Re, S., Gonzalez-Zorn, B., Barbe, J., Ploy, M.-C., & Mazel, D. (2009). The SOS response controls integron recombination. *Science*, 324, 1034. <https://doi.org/10.1126/science.1172914>
- Hernández, F., Calisto-Ulloa, N., Gómez-Fuentes, C., Gómez, M., Ferrer, J., González-Rocha, G., Bello-Toledo, H., Botero-Coy, A. M., Boix, C., Ibáñez, M., & Montory, M. (2019). Occurrence of antibiotics and bacterial resistance in wastewater and sea water from the Antarctic. *Journal of Hazardous Materials*, 363, 447–456. <https://doi.org/10.1016/j.jhazmat.2018.07.027>
- Holmes, A. J., Gillings, M. R., Nield, B. S., Mabbutt, B. C., Nevalainen, K. M. H., & Stokes, H. W. (2003). The gene cassette metagenome is a basic resource for bacterial genome evolution. *Environmental Microbiology*, 5, 383–394. <https://doi.org/10.1046/j.1462-2920.2003.00429.x>
- Jara, D., Bello-Toledo, H., Domínguez, M., Cigarroa, C., Fernández, P., Vergara, L., Quezada-Aguiluz, M., Opazo-Capurro, A., Lima, C. A., & González-Rocha, G. (2020). Antibiotic resistance in bacterial isolates from freshwater samples in Fildes Peninsula, King George Island, Antarctica. *Scientific Reports*, 10, 3145. <https://doi.org/10.1038/s41598-020-60035-0>
- Jová, T., Da Re, S., Denis, F., Mazel, D., & Ploy, M.-C. (2010). Inverse correlation between promoter strength and excision activity in class 1 integrons. *PLoS Genetics*, 6, e1000793. <https://doi.org/10.1371/journal.pgen.1000793>
- Karkman, A., Pärnänen, K., & Larsson, D. G. J. (2019). Fecal pollution can explain antibiotic resistance gene abundances in anthropogenically impacted environments. *Nature Communications*, 10, 80. <https://doi.org/10.1038/s41467-018-07992-3>
- Katoh, K., Misawa, K., Kuma, K., & Miyata, T. (2002). MAFFT: A novel method for rapid multiple sequence alignment based on fast Fourier transform. *Nucleic Acids Research*, 30, 3059–3066. <https://doi.org/10.1093/nar/gkf436>
- Larsson, A. (2014). AliView: A fast and lightweight alignment viewer and editor for large datasets. *Bioinformatics*, 30, 3276–3278. <https://doi.org/10.1093/bioinformatics/btu531>
- Letunic, I., & Bork, P. (2019). Interactive Tree of Life (iTOL) v4: Recent updates and new developments. *Nucleic Acids Research*, 47, W256–W259. <https://doi.org/10.1093/nar/gkz239>
- Macdonald, D., Demarre, G., Bouvier, M., and Mazel, D. (2006). Structural basis for broad DNA specificity in integron recombination. 440.
- Mazel, D. (2006). Integrons: agents of bacterial evolution. *Nature Reviews Microbiology*, 4, 608–620. <https://doi.org/10.1038/nrmicro1462>
- Mazel, D., Dychinco, B., Webb, V., & Davies, J. (2000). Antibiotic resistance in the ECOR collection: integrons and identification of a novel aad gene. *Antimicrobial Agents and Chemotherapy*, 44, 1568–1574.
- Messier, N., & Roy, P. H. (2001). Integron integrases possess a unique additional domain necessary for activity. *Journal of Bacteriology*, 183, 6699–6706. <https://doi.org/10.1128/JB.183.22.6699-6706.2001>
- Moura, A., Soares, M., Pereira, C., Leitão, N., Henriques, I., & Correia, A. (2009). INTEGRALL: A database and search engine for integrons, integrases and gene cassettes. *Bioinformatics*, 25, 1096–1098. <https://doi.org/10.1093/bioinformatics/btp105>
- Nemergut, D. R., Robeson, M. S., Kysela, R. F., Martin, A. P., Schmidt, S. K., & Knight, R. (2008). Insights and inferences about integron evolution from genomic data. *BMC Genomics*, 9, 261. <https://doi.org/10.1186/1471-2164-9-261>
- Nivina, A., Grieb, M. S., Loot, C., Bikard, D., Cury, J., Shehata, L., Bernardes, J., & Mazel, D. (2020). Structure-specific DNA recombination sites: Design, validation, and machine learning-based refinement. *Science Advances*, 6(30). <https://doi.org/10.1126/sciadv.aay2922>
- Nunes-Düby, S. E., Kwon, H. J., Tirumalai, R. S., Ellenberger, T., & Landy, A. (1998). Similarities and differences among 105 members of the Int family of site-specific recombinases. *Nucleic Acids Research*, 26, 391–406. <https://doi.org/10.1093/nar/26.2.391>
- Peng, Y., Leung, H. C. M., Yiu, S. M., & Chin, F. Y. L. (2012). IDBA-UD: a De Novo Assembler for single-cell and Metagenomic Sequencing Data with Highly Uneven Depth. 28, 1420–1428.
- Rabbia, V., Bello-Toledo, H., Jiménez, S., Quezada, M., Domínguez, M., Vergara, L., Gómez-Fuentes, C., Calisto-Ulloa, N., González-Acuña, D., López, J., & González-Rocha, G. (2016b). Antibiotic resistance in Escherichia coli strains isolated from Antarctic bird feces, water from inside a wastewater treatment plant, and seawater samples collected in the Antarctic Treaty area. *Polar Science*, 10, 123–131. <https://doi.org/10.1016/j.polar.2016.04.002>
- Rodríguez-Minguela, C. M., Apajalahti, J. H. A., Chai, B., Cole, J. R., & Tiedje, J. M. (2009). Worldwide prevalence of class 2 integrases outside the clinical setting is associated with human impact. *Applied and Environment Microbiology*, 75, 5100–5110. <https://doi.org/10.1128/AEM.00133-09>
- Rowe-Magnus, D. A., & Mazel, A. (2001). Integrons: Natural tools for bacterial genome evolution. *Current Opinion in Microbiology*, 4, 565–569. [https://doi.org/10.1016/S1369-5274\(00\)00252-6](https://doi.org/10.1016/S1369-5274(00)00252-6)
- Roy, P. H., Partridge, S. R., & Hall, R. M. (2021). Comment on §Conserved phylogenetic distribution and limited antibiotic resistance of class 1 integrons revealed by assessing the bacterial genome and plasmid collection§ by A.N. Zhang et al. *Microbiome*, 9. <https://doi.org/10.1186/s40168-020-00950-6>
- Stokes, H. W., & Hall, R. M. (1989). A novel family of potentially mobile DNA elements encoding site-specific gene-integration functions: Integrons. *Molecular Microbiology*, 3, 1669–1683. <https://doi.org/10.1111/j.1365-2958.1989.tb00153.x>
- Stokes, H. W., Holmes, A. J., Nield, B. S., Holley, M. P., Nevalainen, K. M. H., Mabbutt, B. C., & Gillings, M. R. (2001). Gene cassette PCR: sequence-independent recovery of entire genes from environmental DNA. *Applied and Environment Microbiology*, 67, 5240–5246. <https://doi.org/10.1128/AEM.67.11.5240-5246.2001>
- Valdespino-Castillo, P. M., Cerqueda-García, D., Espinosa, A. C., Batista, S., Merino-Ibarra, M., Taş, N., Alcántara-Hernández, R. J., & Falcón, L. I. (2018). Microbial distribution and turnover in Antarctic microbial mats highlight the relevance of heterotrophic bacteria in low-nutrient environments. *FEMS Microbiology Ecology*, 94(9). <https://doi.org/10.1093/femsec/fiy129>
- Van Goethem, M. W., Pierneef, R., Bezuidt, O. K. I., Van De Peer, Y., Cowan, D. A., & Makhalyane, T. P. (2018). A reservoir of “historical” antibiotic resistance genes in remote pristine Antarctic soils. *Microbiome*, 6(1). <https://doi.org/10.1186/s40168-018-0424-5>
- Werner, G., Klare, I., & Witte, W. (2002). Molecular analysis of streptogramin resistance in enterococci. *International Journal of Medical Microbiology*, 292, 81–94. <https://doi.org/10.1078/1438-4221-00194>
- Yuan, K. E., Yu, K. E., Yang, R., Zhang, Q., Yang, Y., Chen, E., Lin, L., Luan, T., Chen, W., & Chen, B. (2019). Metagenomic characterization of antibiotic resistance genes in Antarctic soils. *Ecotoxicology and Environmental Safety*, 176, 300–308. <https://doi.org/10.1016/j.ecoenv.2019.03.099>
- Zaikova, E., Goerlitz, D. S., Tighe, S. W., Wagner, N. Y., Bai, Y. U., Hall, B. L., Bevilacqua, J. G., Weng, M. M., Samuels-Fair, M. D., & Johnson, S. S. (2019). Antarctic relic microbial mat community revealed by metagenomics and metatranscriptomics. *Front Ecol Evol*, 7, 1. <https://doi.org/10.3389/fevo.2019.00001>

- Zhang, A. N., Li, L. G., Ma, L., Gillings, M. R., Tiedje, J. M., & Zhang, T. (2018). Conserved phylogenetic distribution and limited antibiotic resistance of class 1 integrons revealed by assessing the bacterial genome and plasmid collection. *Environment International*, 6, 1-14.
- Zheng, W., Huan, J., Tian, Z., Zhang, Y., & Wen, X. (2020). Clinical class 1 integron-integrase gene – a promising indicator to monitor the abundance and elimination of antibiotic resistance genes in an urban wastewater treatment plant. *Environment International*, 135, 105372. <https://doi.org/10.1016/j.envint.2019.105372>

How to cite this article: Antelo, V., Giménez, M., Azziz, G., Valdespino-Castillo, P., Falcón, L. I., Ruberto, L. A. M., Mac Cormack, W. P., Mazel, D., & Batista, S. (2021). Metagenomic strategies identify diverse integron-integrase and antibiotic resistance genes in the Antarctic environment.

MicrobiologyOpen, 10, e1219. <https://doi.org/10.1002/mbo3.1219>

APPENDIX

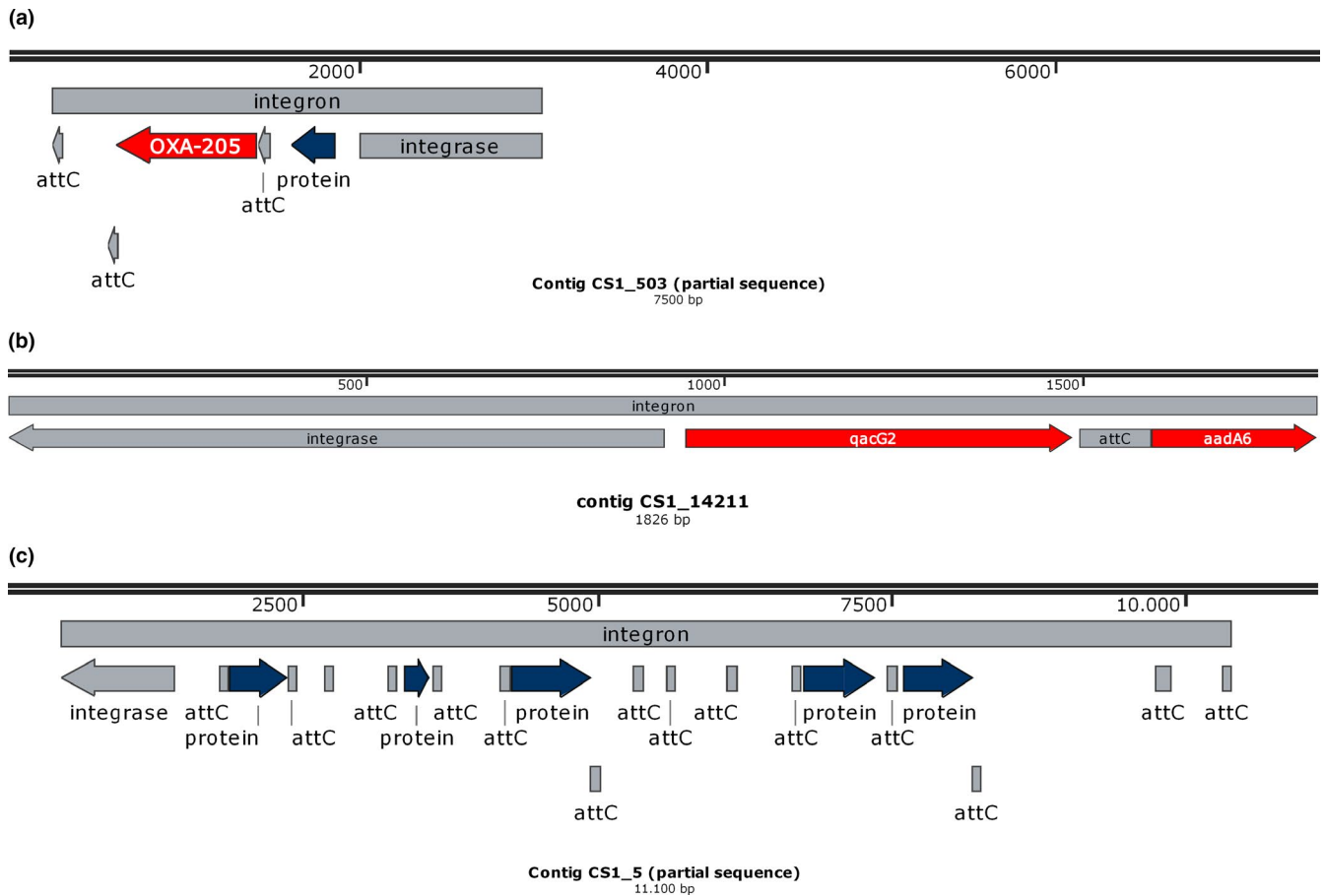


FIGURE A1 (a) Sequence map of integron detected in contig CS1_503. Only part of the contig is displayed. (b) Sequence map of integron detected in contig CS1_14211. The entire contig is displayed. (c) Sequence map of integron detected in contig CS1_5. No ARGs were detected in this integron. Only part of the contig is displayed

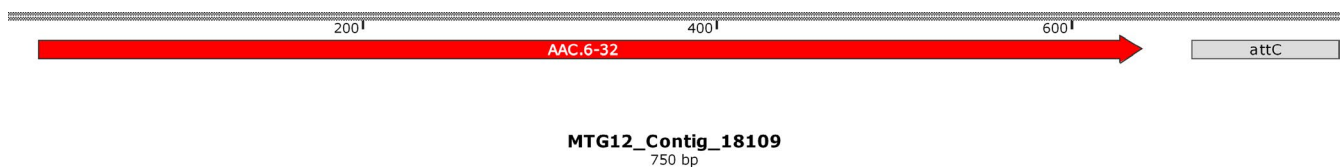


FIGURE A2 Sequence map of CALIN detected in contig 18109 from metagenome 12. The entire sequence is displayed