

The *Arabidopsis* circadian clock protein PRR5 interacts with and stimulates ABI5 to modulate abscisic acid signaling during seed germination

Milian Yang ^{1,2,3} Xiao Han ^{1,2} Jiajia Yang ^{1,2,3} Yanjuan Jiang ^{1,2} and Yanru Hu ^{1,2,*†}

- 1 CAS Key Laboratory of Tropical Plant Resources and Sustainable Use, Xishuangbanna Tropical Botanical Garden, Chinese Academy of Sciences, Kunming, Yunnan 650223, China
- 2 Center of Economic Botany, Core Botanical Gardens, Chinese Academy of Sciences, Kunming, Yunnan 650223, China
- 3 University of Chinese Academy of Sciences, Beijing 100049, China

*Author for correspondence: huanru@xtbg.ac.cn

†Senior author.

Y.H. and M.Y. designed this study and wrote the article; M.Y., X.H., J.Y., Y.J., and Y.H. performed experiments or interpreted data; all authors approved the final article.

The author responsible for distribution of materials integral to the findings presented in this article in accordance with the policy described in the Instructions for Authors (<https://academic.oup.com/plcell>) is: Yanru Hu (huanru@xtbg.ac.cn).

Abstract

Seed germination and postgerminative growth require the precise coordination of multiple intrinsic and environmental signals. The phytohormone abscisic acid (ABA) suppresses these processes in *Arabidopsis thaliana* and the circadian clock contributes to the regulation of ABA signaling. However, the molecular mechanism underlying circadian clock-mediated ABA signaling remains largely unknown. Here, we found that the core circadian clock proteins PSEUDO-RESPONSE REGULATOR5 (PRR5) and PRR7 physically associate with ABSCISIC ACID-INSENSITIVE5 (ABI5), a crucial transcription factor of ABA signaling. PRR5 and PRR7 positively modulate ABA signaling redundantly during seed germination. Disrupting PRR5 and PRR7 simultaneously rendered germinating seeds hyposensitive to ABA, whereas the overexpression of *PRR5* enhanced ABA signaling to inhibit seed germination. Consistent with this, the expression of several ABA-responsive genes is upregulated by PRR proteins. Genetic analysis demonstrated that PRR5 promotes ABA signaling mainly dependently on ABI5. Further mechanistic investigation revealed that PRR5 stimulates the transcriptional function of ABI5 without affecting its stability. Collectively, our results indicate that these PRR proteins function synergistically with ABI5 to activate ABA responses during seed germination, thus providing a mechanistic understanding of how ABA signaling and the circadian clock are directly integrated through a transcriptional complex involving ABI5 and central circadian clock components.

Introduction

Seed germination and subsequent seedling establishment, two crucial developmental stages in flowering plants, require the precise coordination of multiple environmental and intrinsic signals. Among them, the phytohormone abscisic

acid (ABA) is a pivotal signal that represses germination and subsequent seedling establishment, and stimulates seed maturation and dormancy in *Arabidopsis thaliana* (Finkelstein et al., 2002, 2008; Gubler et al., 2005; Finch-Savage and Leubner-Metzger, 2006). The presence of ABA is sensed by

the PYRABACTIN RESISTANCE1 (PYR1)/PYR1-LIKE (PYL)/REGULATORY COMPONENT OF ABA RECEPTOR family of proteins (Ma et al., 2009; Miyazono et al., 2009; Nishimura et al., 2009; Park et al., 2009; Santiago et al., 2009). The recognition of ABA by these receptors leads to the repression of the co-receptor, type 2C protein phosphatases (PP2Cs), permitting the activation of a group of specific kinases termed SNF1-RELATED KINASE2 (SnRK2s; Ma et al., 2009; Park et al., 2009; Cutler et al., 2010; Zhao et al., 2020). SnRK2s subsequently phosphorylate and stabilize downstream regulators, such as the basic leucine zipper (bZIP)-type transcription factor ABSCISIC ACID-INSENSITIVE5 (ABI5) and its homologs ABSCISIC ACID-RESPONSIVE ELEMENT BINDING FACTORS, to mediate the expression of ABA-responsive genes (Kobayashi et al., 2005; Furihata et al., 2006; Fujii et al., 2007; Fujii and Zhu, 2009; NakashiMa et al., 2009).

The ABI5 transcription factor, mainly expressed in dry seeds and strongly induced by ABA, plays a critical role in ABA-inhibited seed germination and postgerminative growth (Finkelstein, 1994; Finkelstein and Lynch, 2000a; Lopez-Molina and Chua, 2000; Lopez-Molina et al., 2001, 2002; Brocard et al., 2002; Finkelstein et al., 2005; Skubacz et al., 2016; Fan et al., 2019). ABI5 is tightly regulated through protein posttranslational modifications (Stone et al., 2006; Garcia et al., 2008; Miura et al., 2009; Lee et al., 2010; Liu and Stone, 2010; Albertos et al., 2015; Yu et al., 2015; Lynch et al., 2017; Ji et al., 2019). For instance, ABI5 is activated through phosphorylation by the SnRK2s and other related kinases in response to ABA but repressed by PP6 (Kobayashi et al., 2005; Furihata et al., 2006; Fujii et al., 2007; Fujii and Zhu, 2009; NakashiMa et al., 2009; Dai et al., 2013; Hu and Yu, 2014; Zhou et al., 2015; Chen et al., 2021). ABI5 also acts as a key integrator between ABA and other signaling pathways during seed germination and postgerminative growth (Lim et al., 2013; Yu et al., 2015; Kim et al., 2016; Yang et al., 2016; Hu et al., 2019; Ju et al., 2019; Pan et al., 2020). For example, the kinase BRASSINOSTEROID-INSENSITIVE2 phosphorylates ABI5 to mediate the antagonism of brassinosteroids to ABA during seed germination (Hu and Yu, 2014), and cytokinin promotes degradation of ABI5 via the 26S proteasome pathway to antagonize ABA-inhibited cotyledon greening (Guan et al., 2014). Although much progress has been made in recent years, a comprehensive understanding of the transcriptional mechanisms underlying the crosstalk between ABA and other critical signals during seed germination remain elusive.

The circadian clock is an endogenous time-keeping system that provides an adaptive advantage to higher plants by synchronizing internal biological processes with external daily environmental cycles (Dunlap, 1999; Dodd et al., 2005; Pruneda-Paz and Kay, 2010; Atkins and Dodd, 2014; Hsu and Harmer, 2014; Grundy et al., 2015; Sanchez and Kay, 2016; Webb et al., 2019; Simon et al., 2020). The oscillatory mechanism of the clock is based on transcriptional–translational feedback loops that connect

morning- and evening-phase circuits (Harmer, 2009; Pokhilko et al., 2012; Carré and Veflingstad, 2013; Hsu and Harmer, 2014; Greenham and McClung, 2015; Uehara et al., 2019; Nakamichi, 2020). In the feedback loop, the genes encoding MYB transcription factors CIRCADIAN CLOCK-ASSOCIATED1 (CCA1) and LATE ELONGATED HYPOCOTYL (LHY) are expressed in the early morning (Wang and Tobin, 1998; Harmer, 2009), and CCA1 and LHY directly suppress the transcription of the pseudo-response regulator genes *PRR9*, *PRR7*, *PRR5*, and *TIMING OF CAB EXPRESSION1* (*TOC1*, also known as *PRR1*; Harmer et al., 2000; Matsushika et al., 2000; Strayer et al., 2000; Alabadi et al., 2001; Farré and Liu, 2013; Adams et al., 2015). These *PRR* genes are expressed when LHY and CCA1 protein levels decrease and, in turn, the *PRR* proteins act to inhibit *LHY* and *CCA1* transcription until the following morning (Alabadi et al., 2001; Perales and Más, 2007; Nakamichi et al., 2010, 2012; Gendron et al., 2012; Wang et al., 2010, 2013; Li et al., 2020a, 2020b).

The circadian clock integrates multiple internal and external signals to modulate plant growth, development, and physiology, such as photomorphogenesis, flowering, leaf senescence, and stress responses (Dunlap, 1999; Yamamoto et al., 2003; Dodd et al., 2005; Nakamichi et al., 2005, 2007, 2009; FukushiMa et al., 2009; Pruneda-Paz and Kay, 2010; Liu et al., 2013; Atkins and Dodd, 2014; Hsu and Harmer, 2014; Sanchez and Kay, 2016; Frank et al., 2018; Kim et al., 2020; Li et al., 2020a; Simon et al., 2020). Moreover, a close relationship between circadian clock and ABA biosynthesis or signaling has been reported in Arabidopsis. For instance, the circadian clock is involved in the production of ABA, thereby conferring a competitive advantage to the plant against drought, heat, salinity, and osmotic stresses (Burschka et al., 1983; Nováková et al., 2005; Lee et al., 2006; FukushiMa et al., 2009; Nakamichi et al., 2009; McAdam et al., 2011; Grundy et al., 2015; Adams et al., 2018). Several key genes that encode ABA biosynthetic enzymes, such as *NINE-CIS-EPOXYCAROTENOID DIOXYGENASE3* and *ABA DEFICIENT2*, exhibit circadian rhythmicity (Covington et al., 2008; FukushiMa et al., 2009; Penfield and Hall, 2009; Seung et al., 2012; Adams et al., 2018), and many ABA signaling components and downstream-responsive genes are rhythmically expressed (Covington et al., 2008; Michael et al., 2008; Mizuno and Yamashino, 2008; Penfield and Hall, 2009; Seung et al., 2012; Liu et al., 2013). LHY and CCA1 transcription factors have been shown to bind the promoter sequences of several genes critical for ABA biosynthesis and signaling (Adams et al., 2018). *PRR5*, *PRR7*, and *PRR9* are also involved in ABA biosynthesis and signaling, and the content of ABA increases in *prr5 prr7 prr9* triple mutant seedlings (18-day-old plants; FukushiMa et al., 2009; Liu et al., 2013; Footitt et al., 2017). Moreover, multiple circadian clock proteins (e.g. CCA1, LHY, and TOC1) play important roles in seed dormancy and integrate environmental signaling controlling dormancy release in Arabidopsis (Penfield and Hall, 2009). Nevertheless, the exact molecular

mechanisms underlying the circadian regulation of ABA responses during seed germination are still not fully understood.

In this study, we aimed to discover transcriptional regulation details of circadian clock-mediated ABA signaling during seed germination. We used the yeast two-hybrid system to identify potential ABI5-interacting partners involved in the circadian clock, and found that PRR5 and PRR7 physically associate with ABI5 in yeast (*Saccharomyces cerevisiae*) and in planta. Phenotypic analysis showed that PRR5, PRR7 as well as PRR9 positively regulate ABA signaling redundantly during seed germination. The *prr5 prr7* double mutant and *prr5 prr7 prr9* triple mutant are hyposensitive to ABA during seed germination. Conversely, overexpressing PRR5 causes germinating seeds to become ABA-hypersensitive. Further genetic analysis demonstrated that the ABA hypersensitivity of PRR5-overexpressing plants requires functional ABI5 protein. Consistently, the mechanistic investigations revealed that PRR5 stimulates the transcriptional function of ABI5 to modulate downstream target genes. Together, our findings indicate that these PRR proteins act synergistically with ABI5 to positively regulate the ABA responses during seed germination and provide a mechanistic understanding of the crosstalk between the circadian clock and ABA signaling.

Results

ABI5 physically interacts with PRR5 and PRR7

The ABI5 transcription factor is a critical modulator of ABA signaling, which represses seed germination and early seedling growth. Importantly, ABI5 also may function as a crucial interaction node to integrate ABA signaling and other pathways. To further investigate the molecular mechanisms underlying the circadian regulation of ABA signaling during seed germination, we performed yeast two-hybrid analysis to identify possible physical interactions between ABI5 and core components of the circadian clock, including CCA1, LHY, PRR9, PRR7, PRR5, PRR3, and TOC1. The full-length ABI5 was fused to the Gal4 activation domain (AD) of the prey vector (AD-ABI5) and the full-length of the clock proteins were ligated with the Gal4 DNA-binding domain (BD) of the bait vector (BD-CCA1, BD-LHY, BD-PRR, and BD-TOC1). As shown in Figure 1A, ABI5 physically associated with PRR5 and PRR7 in the yeast two-hybrid system, and no interaction was detected between ABI5 and CCA1, LHY, PRR9, PRR3, or TOC1 (Figure 1A; Supplemental Figure S1). Parallel experiments showed that ABI3 and ABI4, two other key transcription factors involved in ABA signaling (Giraudat et al., 1992; Finkelstein, 1994; Finkelstein et al., 1998; Söderman et al., 2000), did not interact with PRR5 and PRR7 in yeast (Figure 1A), supporting the specificity of the interactions of ABI5 with PRR5 and PRR7.

To corroborate that ABI5 interacts with PRR5 and PRR7 in plant cells, we used the bimolecular fluorescence complementation (BiFC) assay. The full-length coding sequence (CDS) of ABI5 was ligated with the sequence encoding the

C-terminal yellow fluorescent protein (YFP) fragment driven by the Cauliflower mosaic virus (CaMV) 35S promoter to generate ABI5-cYFP, whereas the full-length PRR5, PRR7, and PRR9 were fused with the sequence encoding the N-terminal YFP fragment to produce PRR5-nYFP, PRR7-nYFP, and PRR9-nYFP. When ABI5-cYFP was coexpressed transiently with PRR5-nYFP or PRR7-nYFP in leaf cells of wild tobacco (*Nicotiana benthamiana*), strong YFP fluorescence was detected in the nucleus of the transformed cells, as revealed by staining with 4',6-diamidino-2-phenylindole (DAPI; Figure 1B). No YFP signal was observed in the negative control assays in which ABI5-cYFP was coexpressed with PRR9-nYFP and ABI5^{1–164}-cYFP (the sequence encoding the N-terminal amino acid residues 1–164 of ABI5 fused to cYFP) was coexpressed with PRR5-nYFP or PRR7-nYFP (Figure 1B). Moreover, as shown in Figure 1C, a coimmunoprecipitation (CoIP) assay provided further evidence of the association between ABI5 and PRR5 in transgenic Arabidopsis simultaneously overexpressing ABI5 and PRR5 (35S:ABI5-4MYC/35S:2FLAG-PRR5), which was constructed by introducing a PRR5 overexpression construct (35S:2FLAG-PRR5) into previously described 35S:ABI5-4MYC plants (containing a functional ABI5-4MYC construct driven by the CaMV 35S promoter; Chen et al., 2012; Hu et al., 2019). Collectively, these results demonstrate that ABI5 physically interacts with PRR5 and PRR7, implying that PRR5 and PRR7 may function as two interacting partners of ABI5 to mediate ABA responses during seed germination.

The bZIP domain of ABI5 and the C-terminal fragment of PRR5 are responsible for the interaction

To identify the region of ABI5 essential for the interaction with PRR5, we fused five truncated ABI5 variants to the Gal4 AD of the prey vector (Figure 2A) and examined the interaction between these variants and PRR5 by yeast two-hybrid analysis. As shown in Figure 2A, deletion of the N-terminal amino acid residues 1–164 of ABI5 (AD-ABI5^{165–442}) did not affect the ABI5–PRR5 interaction, whereas deletion of the 278 C-terminal residues of ABI5 that harbor the bZIP domain (AD-ABI5^{1–164}) completely abolished the ABI5–PRR5 interaction (Figure 2A). This result shows that the C-terminal region of ABI5 was required for its interaction with PRR5. Further mapping revealed that the 93 amino acids spanning the C-terminal bZIP domain were specifically involved in the ABI5–PRR5 interaction, because an ABI5 variant in which the N-terminal amino acids 1–349 were deleted (AD-ABI5^{350–442}) could still physically associate with PRR5 (Figure 2A).

Similarly, to determine the PRR5 region critical for the interaction with ABI5, we truncated the sequences of PRR5 to obtain variants with the N-terminal PR domain, the C-terminal fragment, or the CCT domain (Figure 2B; Kiba et al., 2007). We fused the truncated PRR5 sequences to the Gal4 DNA-BD of the pGBKT7 vector as baits and performed directed yeast two-hybrid analysis. As shown in Figure 2B, the N-terminal PR domain (BD-PRR5^{1–180}) and the CCT

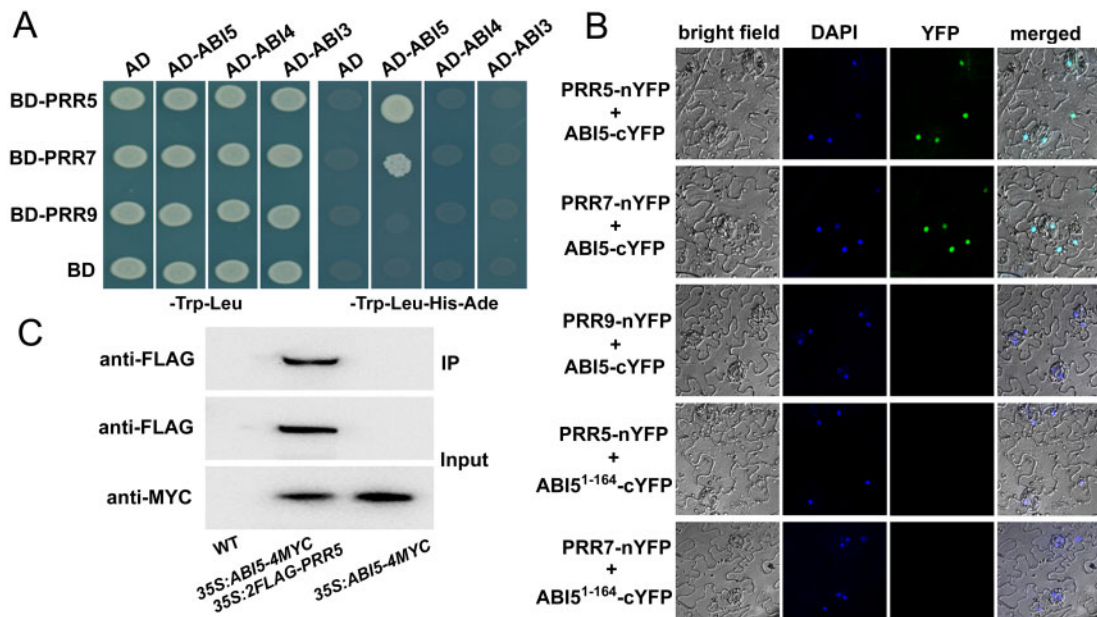


Figure 1 Physical interactions of ABI5 with PRR5 and PRR7. **A**, Yeast two-hybrid screening assays. Interaction of ABI5 with PRR5 or PRR7 is indicated by the ability of yeast cells to grow on dropout medium lacking Leu, Trp, His, and Ade for 4 d after plating. pGBKT7 (BD) and pGADT7 (AD) were used as negative controls. **B**, BiFC assays. Fluorescence was observed in the nuclear compartment of transformed *N. benthamiana* cells, resulting from the complementation of ABI5-cYFP with PRR5-nYFP or PRR7-nYFP. No signal was obtained for the negative controls in which ABI5-cYFP was coexpressed with PRR9-nYFP, and ABI5¹⁻¹⁶⁴-cYFP (the sequence encoding the N-terminal domain of ABI5 fused with cYFP) was coexpressed with PRR5-nYFP or PRR7-nYFP. Nuclei are indicated by DAPI staining. **C**, CoIP assays. MYC-fused ABI5 was immunoprecipitated using an anti-MYC antibody (1:250) and the coimmunoprecipitated protein was detected using an anti-FLAG antibody (1:10,000). Protein input for MYC-ABI5 in immunoprecipitated complexes was also detected and is shown. Experiments were repeated three times with similar results.

domain (BD-PRR5⁵⁰²⁻⁵⁵⁸) did not interact with ABI5, whereas the C-terminal fragment (BD-PRR5¹⁷²⁻⁵⁵⁸) strongly interacted with ABI5. These results demonstrate that the entire C-terminal region of PRR5 is crucial in forming the ABI5-PRR5 interaction.

The *prr5 prr7* double and *prr5 prr7 prr9* triple mutants are hypersensitive to ABA during seed germination

Previous studies showed that PRR proteins are core clock components in Arabidopsis that regulate multiple physiological processes, such as photomorphogenesis, flowering, and stress responses (Yamamoto et al., 2003; Nakamichi et al., 2005, 2007, 2009; Farré and Liu, 2013; Liu et al., 2013; Li et al., 2020a; Yuan et al., 2021). Because PRR5 and PRR7 physically interact with the ABI5 transcription factor, we queried whether they are involved in ABI5-mediated ABA signaling during seed germination. To test this possibility, we first analyzed the expression of *PRR5*, *PRR7*, as well as *PRR9* in ABA-treated wild-type seeds. As shown in Figure 3, the expression of *PRR5*, *PRR7*, and *PRR9* was rhythmic and responsive to ABA during the early stage of germination (Figure 3). Similarly, we detected the expression of *ABI5* in wild-type germinating seeds, and found that the transcript levels of *ABI5* also displayed a diel pattern in response to ABA (Figure 3). Then, we evaluated the germination of the loss-of-function *prr5* (*prr5-1* and *prr5-2*) and *prr7* (*prr7-1* and *prr7-2*) single mutants on half-strength Murashige and

Skoog (MS) supplemented with different concentrations of ABA. As shown in Supplemental Figure S2, A and B, seeds of *prr5* and *prr7* single mutants displayed germination and greening percentages in response to ABA which were similar to those of wild-type seeds. To avoid the effects of sucrose and/or nitrate on seed germination (Garcarrubio et al., 1997; Finkelstein and Lynch, 2000b; Dekkers et al., 2004; Alboresi et al., 2005; Dave et al., 2011), we also analyzed the phenotypes of *prr5* and *prr7* single mutants on water agar medium and found that these mutants behaved like the wild-type upon ABA treatment during seed germination (Supplemental Figure S2, C and D). This finding shows that disruption of *PRR5* or *PRR7* alone had little effect on ABA responses during seed germination and subsequent seedling establishment.

Because *PRR5* and *PRR7* play partially overlapping roles in the circadian clock, we hypothesized that they may mediate ABA signaling redundantly during seed germination. To test this speculation, we genetically crossed *prr5-1* with *prr7-2* to generate a *prr5 prr7* double mutant and evaluated its performance in half-strength MS medium containing different concentrations of ABA. As shown in Figure 4, A–C, the progeny of the *prr5 prr7* double mutant were hypersensitive to ABA during seed germination and showed much higher germination and greening than the wild-type. *PRR9* is a close homolog of *PRR5* and *PRR7* in regulating the circadian clock and various other physiological processes (Nakamichi et al., 2005, 2007, 2009; Farré and Liu, 2013). To test whether

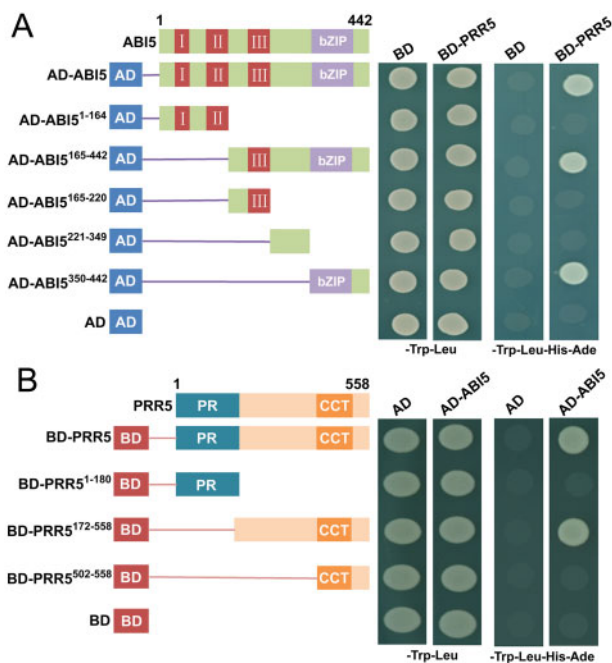


Figure 2 Yeast two-hybrid screening assays to identify ABI5 and PRR5 regions required for their interaction. **A**, The bZIP domain of ABI5 interacts with PRR5. Left: Diagram of full-length and truncated ABI5 constructs with specific deletions. Right: Interaction is indicated by the ability of cells to grow on dropout medium lacking Leu, Trp, His, and Ade for 4 days after plating. pGBKT7 (BD) and pGADT7 (AD) were used as negative controls. **B**, The C-terminal fragment of PRR5 interacts with ABI5. Left: Diagram of full-length and truncated PRR5 constructs with specific deletions. Right: Interaction is indicated by the ability of cells to grow on dropout medium lacking Leu, Trp, His, and Ade for 4 days after plating. BD and AD were used as negative controls. BD and AD vectors were used as negative controls.

PRR9 acts together with PRR5 and PRR7 in ABA signaling, we examined the phenotypes of the *prr5 prr9* double mutant and *prr5 prr7 prr9* triple mutant. The results showed that the *prr5 prr7 prr9* triple mutant had much higher germination and greening percentages than the wild-type and the *prr5 prr7* and *prr5 prr9* double mutants (Figure 4, A–C). We also analyzed the phenotypes of these mutants on water agar medium supplemented with ABA and found that the seeds of the *prr5 prr7*, *prr5 prr9*, and *prr5 prr7 prr9* mutants also were more hyposensitive to ABA than the seeds of the wild-type during seed germination (Supplemental Figure S3).

To confirm the *prr5 prr7 prr9* triple mutant phenotype in response to ABA, we examined the expression of several well-characterized ABA-responsive genes in ABA-treated germinating seeds of the *prr5 prr7 prr9* triple mutant, including *LATE EMBRYOGENESIS ABUNDANT 6* (*EM6*), *EM1*, *RESPONSIVE TO ABA 18* (*RAB18*), and *RESPONSIVE TO DESICCATION 29B* (*RD29B*). In wild-type germinating seeds, *EM6*, *EM1*, *RAB18*, and *RD29B* displayed circadian expression patterns, implying that these genes may be modulated by the circadian clock (Figure 5). However, in the *prr5 prr7 prr9* triple mutant, the *EM1*, *EM6*, *RAB18*, and *RD29B* transcript levels decreased compared with those in the wild-type, and

the circadian amplitude of their expression was greatly attenuated (Figure 5). These results suggest that PRR5, PRR7, and PRR9 may upregulate the expression of these ABA-induced genes during seed germination. Taken together, these results show that PRR5, PRR7, and PRR9 may positively modulate ABA responses during seed germination.

Overexpression of PRR5 confers germinating seeds being ABA-hypersensitive

To further analyze the role of PRR5 in ABA signaling during seed germination and postgerminative growth, we generated transgenic plants overexpressing PRR5 (*35S:2FLAG-PRR5*) under the control of the CaMV 35S promoter. Reverse transcription-quantitative polymerase chain reaction (RT-qPCR) analysis showed that some of overexpressing lines had elevated levels of PRR5 transcripts under normal growth condition (Supplemental Figure S4). We selected the homozygous *35S:2FLAG-PRR5-9* and *35S:2FLAG-PRR5-10* transgenic plants for further analysis (Supplemental Figure S4). Consistent with previous studies (Sato et al., 2002; Murakami et al., 2004), the F4 progeny of these transgenic plants exhibited an early flowering phenotype compared with the wild-type. We investigated the performances of *35S:2FLAG-PRR5-9* and *35S:2FLAG-PRR5-10* on half-strength MS medium with various concentrations of ABA during seed germination. As shown in Figure 6A, the progeny of *35S:2FLAG-PRR5-9* and *35S:2FLAG-PRR5-10* had much lower germination percentages than the wild-type at the ABA concentration tested. Moreover, the seeds of *35S:2FLAG-PRR5-9* and *35S:2FLAG-PRR5-10* showed significantly less greening than the seeds of the wild-type (Figure 6, B and C). Likewise, on water agar media containing ABA, *35S:2FLAG-PRR5-9* and *35S:2FLAG-PRR5-10* were also more sensitive to ABA than the wild-type during seed germination (Supplemental Figure S5). Thus, the overexpression of PRR5 enhances ABA responses during seed germination, which further supports the notion that PRR5 positively mediates ABA signaling to repress seed germination and early seedling growth in Arabidopsis.

Genetic interaction between ABI5 and PRR5

Having ascertained that PRR5 interacts with ABI5 and positively modulates ABA responses, we asked whether the action of PRR5 in mediating ABA signaling required functional ABI5. To test this possibility, we generated *abi5 35S:2FLAG-PRR5* plants by genetically crossing *35S:2FLAG-PRR5-10* with *abi5* (*abi5-1*), which is a loss-of-function mutant of ABI5 in the Wassilewskija background (Finkelstein, 1994; Finkelstein and Lynch, 2000a) and was introduced into the Columbia (Col) background through backcrossing it with the Col wild-type six times (Hu et al., 2019). Similar to *abi5* seeds, progeny of *abi5 35S:2FLAG-PRR5* was also hyposensitive to ABA during seed germination, with much higher percentages of germination and greening compared with those of the wild-type and *35S:2FLAG-PRR5-10* plants (Figure 7, A–C). These results show that the ABA hypersensitivity of *35S:2FLAG-PRR5-10* requires a functional ABI5

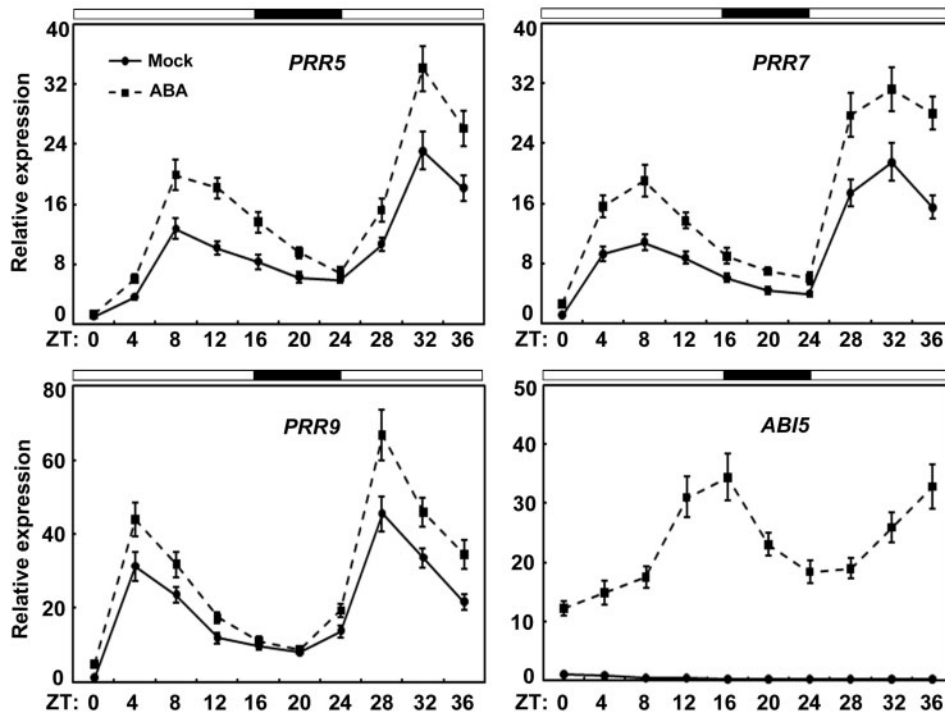


Figure 3 Expression of *PRR5*, *PRR7*, *PRR9*, and *ABI5* in response to ABA during seed germination. RT-qPCR analysis of the ABA-induced expression of *PRR5*, *PRR7*, *PRR9*, and *ABI5* in germinating wild-type (WT) seeds. Total RNA was extracted from three different batches of germinating seeds (2 days, harvested from ZT0 to ZT36) of WT with or without (Mock) 0.5- μ M ABA treatment grown under 16-h-light/8-h-dark for indicated times. Time is expressed as hours from dawn (ZT0). The *PP2A* (AT1G13320) gene was used as control. Error bars show SD from three independent biological replicates. Values are means \pm SD.

transcription factor. However, the responses of *abi5* 35S:2FLAG-*PRR5* after exposure to ABA were different from those of the *abi5* mutant (Figure 7, A–C). To further elucidate the genetic relationship between *ABI5* and *PRR5* in ABA signaling, we crossed *abi5* with the *prr5 prr7* double mutant to produce a *prr5 prr7 abi5* triple mutant, and investigated its phenotype in the presence of ABA during seed germination. As shown in Figure 8, A–C, the *prr5 prr7 abi5* triple mutant had higher germination and greening percentages than *prr5 prr7* and *abi5* on half-strength MS medium containing 1.5- μ M ABA, implying that *PRR5* and *PRR7* may associate with other proteins besides *ABI5* to mediate ABA signaling.

PRR5 stimulates the transcriptional function of ABI5

Recent studies have revealed that several interacting partners of *ABI5* exert their regulatory effects mainly by stimulating or repressing the transcriptional function of *ABI5* (Lim et al., 2013; Kim et al., 2016; Hu et al., 2019; Ji et al., 2019; Ju et al., 2019; Zhang et al., 2019; Zhao et al., 2019; Pan et al., 2020). Because *PRR5* physically and genetically interacts with *ABI5*, we examined whether it also affects the ability of *ABI5* to activate downstream targets. To test this, we initially investigated the possible regulatory effect of *PRR5* on the transcriptional function of *ABI5* in wild-type *Arabidopsis* mesophyll protoplasts using a

dual-luciferase (*LUC*) reporter approach (Yoo et al., 2007). The effectors contained an *ABI5*, *PRR5*, *PRR7*, or *GFP* (green fluorescent protein) gene under the control of the *CaMV* 35S promoter (Figure 9A). Because *EM6* and *EM1* are direct downstream targets of *ABI5* (Finkelstein and Lynch, 2000a; Lopez-Molina and Chua, 2000; Nakamura et al., 2001; Carles et al., 2002; Reeves et al., 2011), we fused their promoters with the *LUC* gene to produce reporter constructs (Figure 9A). Consistent with previous studies (Zhou et al., 2015; Pan et al., 2018; Hu et al., 2019), expression of *ABI5* significantly increased the expression level of *LUC* driven by the *EM6* or *EM1* promoters in the presence of 5- μ M ABA compared with the expression of *GFP* alone (Figure 9B). More importantly, the coexpression of *PRR5* with *ABI5* further enhanced the *LUC* expression level when compared with the coexpression of *GFP* and *ABI5* (Figure 9B). Similar results were found when *PRR7* was coexpressed with *ABI5* in these assays (Figure 9B). These results suggest that *PRR5* and *PRR7* may stimulate the transcriptional function of *ABI5* to modulate downstream *EM6* or *EM1* under ABA treatment.

To verify that the transcriptional function of *ABI5* is enhanced by *PRR* proteins, we compared the ability of *ABI5* to activate downstream targets in mesophyll protoplasts of the wild-type and the *prr5 prr7 prr9* triple mutant. As shown in Figure 9C, *LUC* expression driven by the *EM6* promoter in response to ABA was reduced in *prr5 prr7 prr9* protoplasts compared with its expression in wild-type protoplasts.

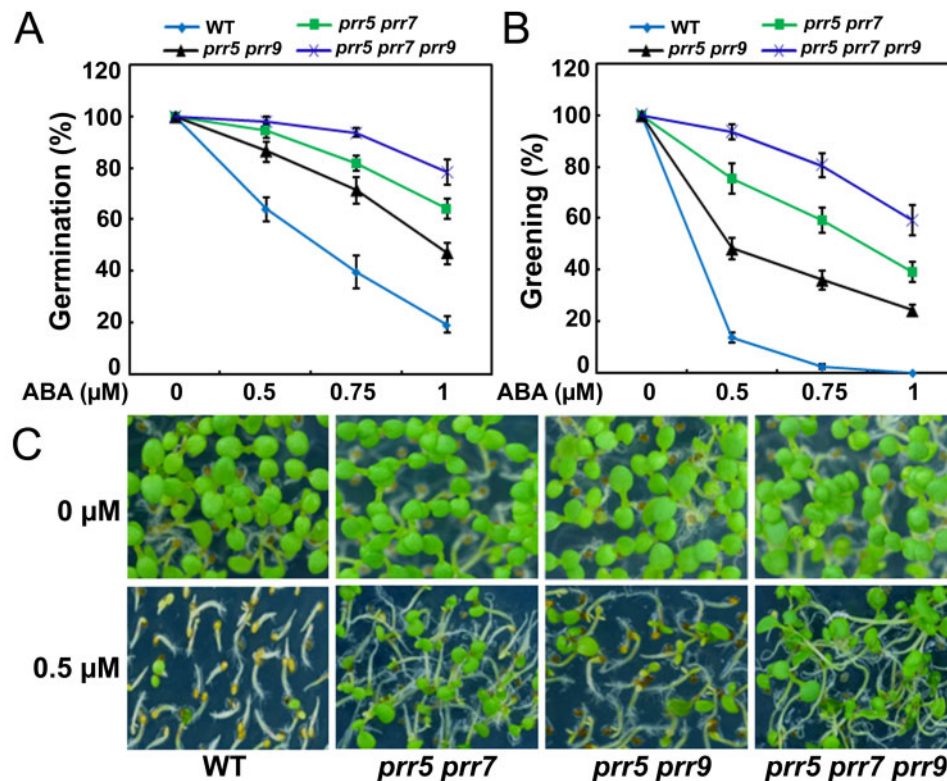


Figure 4 ABA responses of *prr5 prr7*, *prr5 prr9*, and *prr5 prr7 prr9* mutants during seed germination. A, Germination of the WT, *prr5 prr7*, *prr5 prr9*, and *prr5 prr7 prr9* mutants. Seed germination was recorded 2 days after stratification on half-strength MS medium supplemented with different concentrations of ABA. B, Cotyledon greening of the WT, *prr5 prr7*, *prr5 prr9*, and *prr5 prr7 prr9* mutants. Cotyledon greening was scored 4.5 days after stratification on half-strength MS medium supplemented with different concentrations of ABA. Experiments were performed seven times by analyzing different batches of seeds. Each batch of seeds of WT, *prr5 prr7*, *prr5 prr9*, and *prr5 prr7 prr9* mutants was pooled from more than 60 independent plants. For each biological replicate, more than 120 seeds were examined. Values are means \pm SD. C, Seedlings of WT, *prr5 prr7*, *prr5 prr9*, and *prr5 prr7 prr9* mutants 4.5 days after germination on half-strength MS medium containing 0.5- μ M ABA.

Similar results were found when the *EM1* promoter was used in these assays (Figure 9C). These findings further support the notion that PRR5 and PRR7 stimulate ABI5's transcriptional function to modulate downstream genes. Considering that PRR5 and PRR7 interact with ABI5 and enhance its transcriptional function to activate *EM6* and *EM1*, we queried whether PRR proteins directly mediate the expression of *EM6* and *EM1* through binding their promoters. The evidence based on the yeast one-hybrid analysis showed that PRR5 and PRR7 did not recognize the promoter sequences of *EM6* and *EM1* (Supplemental Figures S6 and S7). However, the possibility that PRR proteins are recruited to *EM6* and *EM1* promoters in vivo through interacting with other crucial transcription factors (e.g. ABI5) cannot be ruled out. Previous studies revealed that ABI5 recognizes the *EM6* and *EM1* promoter regions (such as *pEM6-1* and *pEM1-1* shown in Supplemental Table S1) covering a G-box-type cis-element (CACGTG; Carles et al., 2002; Chen et al., 2012). Chromatin immunoprecipitation (ChIP) was performed in ABA-treated germinating seeds of 35S:2FLAG-PRR5-10 and *abi5* 35S:2FLAG-PRR5 plants upon ABA treatment. The results showed that PRR5 was enriched at the promoter regions of *EM6* and *EM1* (*pEM6-1* and *pEM1-1*) targeted by

ABI5 in 35S:2FLAG-PRR5-10 plants (Figure 10, A and B). However, the enrichment of PRR5 on *pEM6-1* and *pEM1-1* was significantly decreased in *abi5* 35S:2FLAG-PRR5 compared with 35S:2FLAG-PRR5-10 (Figure 10, A and B). These findings imply that PRR5 associates with the promoters of *EM6* and *EM1* mainly through ABI5 in vivo.

Hayama et al. (2017) revealed that PRR proteins modulate the stability of their interacting CONSTANS (CO) transcription factor, which promoted us to analyze whether PRR proteins also affects the accumulation of ABI5. The results showed that ABA-induced accumulation of ABI5 was similar in *prr5 prr7 prr9* and wild-type plants (Figure 9D), suggesting that PRR proteins did not regulate the stability of ABI5. As PRR proteins exert stimulative effect on ABI5, we investigated whether the ABA responses of 35S:ABI5-4MYC were enhanced by the overexpression of PRR5 during seed germination. To test this possibility, we compared the germination and greening percentages of 35S:ABI5-4MYC and 35S:ABI5-4MYC/35S:2FLAG-PRR5-10 plants during seed germination in response to ABA. As shown in Figure 10, C–E, the progeny of 35S:ABI5-4MYC/35S:2FLAG-PRR5-10 displayed much lower germination and greening percentages than 35S:ABI5-4MYC, suggesting that the increased ABA signaling

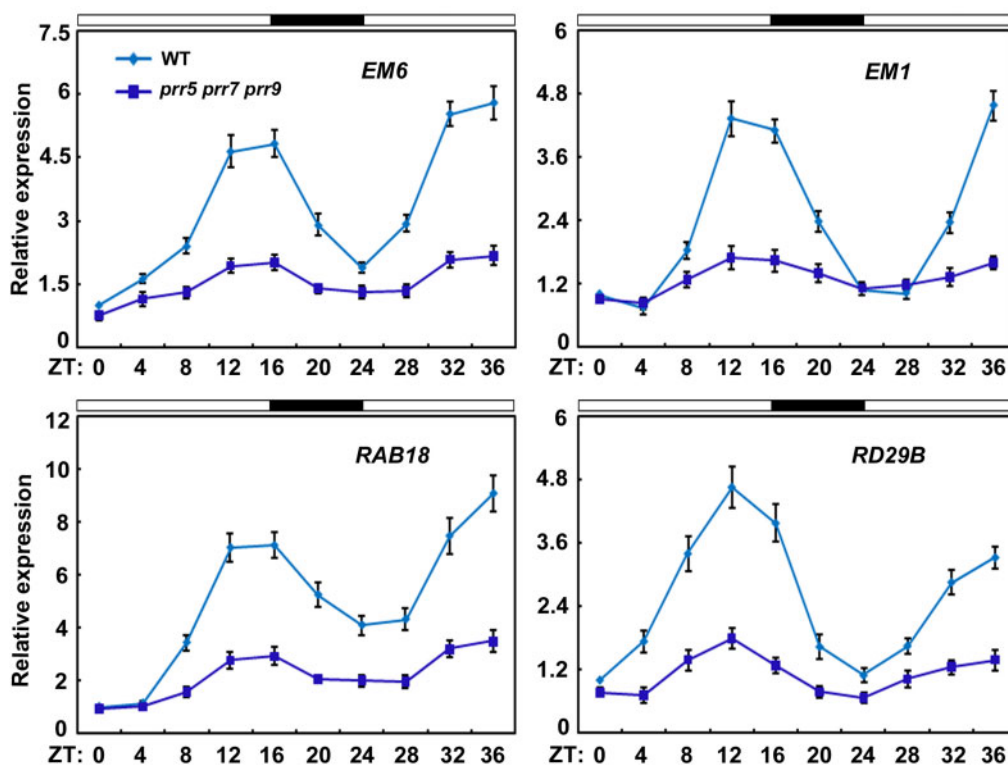


Figure 5 Expression levels of several ABA-responsive Genes *prr5 prr7 prr9*. RT-qPCR analysis of the ABA-induced expression of *EM6*, *EM1*, *RAB18*, and *RD29B* in the WT and *prr5 prr7 prr9*. Total RNA was extracted from three different batches of germinating seeds (2 days, harvested from ZT0 to ZT36) of WT and *prr5 prr7 prr9* with 0.5- μ M ABA treatment grown under 16-h-light/8-h-dark for indicated times. Time is expressed as hours from dawn (ZT0). The *PP2A* (AT1G13320) gene was used as control. Error bars show SD from three independent biological replicates. Values are means \pm SD.

in *35S:ABI5-4MYC* was enhanced by *PRR5* overexpression. The phenotypic observation further supports our proposal that *PRR5* stimulates *ABI5* to modulate ABA signaling during seed germination.

Discussion

The circadian clock is an endogenous biological oscillator that modulates a wide range of physiological processes in plants, such as photomorphogenesis, flowering, and stress responses (Yamamoto et al., 2003; FukushiMa et al., 2009; Pruneda-Paz and Kay, 2010; Liu et al., 2013; Atkins and Dodd, 2014; Hsu and Harmer, 2014; Sanchez and Kay, 2016; Frank et al., 2018; Kim et al., 2020; Li et al., 2020a; Simon et al., 2020). The circadian clock also plays crucial roles in the control of ABA biosynthesis and downstream responses (Nováková et al., 2005; Lee et al., 2006; Covington et al., 2008; Mizuno and Yamashino, 2008; FukushiMa et al., 2009; Nakamichi et al., 2009; Penfield and Hall, 2009; McAdam et al., 2011; Seung et al., 2012; Grundy et al., 2015; Adams et al., 2018). However, the detailed mechanisms underlying how ABA signaling is circadian regulated remain elusive. An in-depth understanding of the regulatory effects of central circadian clock components on ABA signaling may help reveal the molecular basis of circadian-mediated ABA signaling. The bZIP-type *ABI5* transcription factor is a master regulator of ABA signaling that represses seed germination

and early seedling growth (Finkelstein, 1994; Finkelstein and Lynch, 2000a; Lopez-Molina and Chua, 2000; Lopez-Molina et al., 2001, 2002; Brocard et al., 2002; Finkelstein et al., 2005; Skubacz et al., 2016). *ABI5* also functions as a critical node to integrate multiple signaling pathways during seed germination and/or postgerminative growth (Lim et al., 2013; Yu et al., 2015; Kim et al., 2016; Hu et al., 2019; Ju et al., 2019; Pan et al., 2020). Despite recent advances, the direct involvement of *ABI5* in circadian-modulated ABA responses and the underlying molecular mechanisms are largely unknown.

In this study, we showed that *ABI5* physically interacts with *PRR5* and *PRR7* (Figure 1, A–C), two core proteins of the circadian clock (Yamamoto et al., 2003; Nakamichi et al., 2005, 2010; Farré and Liu, 2013). The interaction between *ABI5* and *PRR5* or *PRR7* was specific because *ABI5* did not associate with close homologs of *PRR5* and *PRR7*, such as *PRR9* and *TOC1* (Figure 1; Supplemental Figure S1). In addition, no interaction was detected between *PRR5* or *PRR7* and other critical modulators of ABA signaling, such as *ABI3* and *ABI4* (Figure 1A). Further analysis showed that the bZIP domain of *ABI5* and the C-terminal region of *PRR5* are essential for the interaction (Figure 2, A and B). In line with the *PRR5*–*ABI5* and *PRR7*–*ABI5* physical interactions, the phenotypic analysis showed that *PRR5* and *PRR7* positively modulate ABA responses during seed germination. Similar to seeds of the *abi5* mutant, progeny of the *prr5 prr7*

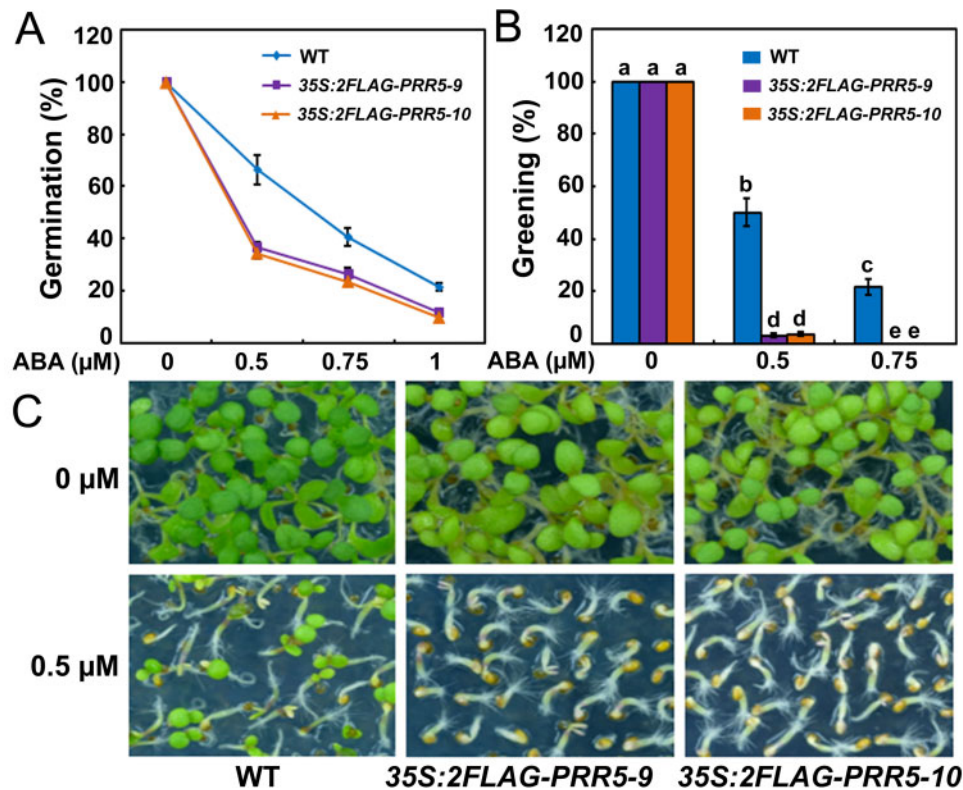


Figure 6 ABA responses of *PRR5*-overexpressing plants during seed germination. A, Germination of *PRR5*-overexpressing plants *35S:2FLAG-PRR5-9* and *35S:2FLAG-PRR5-10*. Seed germination was recorded 2 days after stratification on half-strength MS medium supplemented with different concentrations of ABA. B, Cotyledon greening of WT, *35S:2FLAG-PRR5-9*, and *35S:2FLAG-PRR5-10*. Cotyledon greening was scored 5 days after stratification on half-strength MS medium supplemented with 0.5- or 0.75- μ M ABA. Experiments were performed five times by analyzing different batches of seeds. Each batch of seeds of WT, *35S:2FLAG-PRR5-9*, and *35S:2FLAG-PRR5-10* was pooled from more than 60 independent plants. For each biological replicate, more than 120 seeds were examined. Values are means \pm sd. Bars with different letters are significantly different from each other ($P < 0.05$). Data were analyzed by analysis of variance (ANOVA). C, Seedlings of WT, *35S:2FLAG-PRR5-9*, and *35S:2FLAG-PRR5-10* 5 days after germination on half-strength MS medium containing 0.5- μ M ABA.

double mutant and *prr5 prr7 prr9* triple mutant were hypersensitive to ABA treatment, with much higher percentages of germination and greening than the seeds of the wild-type (Figure 4, A–4; Footitt et al., 2017). Consistent with this result, *PRR5* and *PRR7* are positively involved in the expression of several downstream ABA-responsive genes, including *EM6*, *EM1*, *RAB18*, and *RD29B* (Figure 5). Conversely, the overexpression of *PRR5* confers germinating seeds with more sensitivity to ABA compared with the wild-type (Figure 6, A–C). On the basis of these results, we concluded that *PRR5* and *PRR7* interact with *ABI5* to activate ABA signaling during seed germination and subsequent seedling establishment in *Arabidopsis*.

In addition to *PRR5*, *PRR7*, and *PRR9* proteins, multiple key components of the circadian clock are essential for modulating ABA signaling and/or seed dormancy (Penfield and Hall, 2009; Footitt et al., 2011, 2017; Finch-Savage and Footitt, 2017; Adams et al., 2018). For instance, *LHY* and *CCA1* recognize the promoter regions of several genes critical for ABA biosynthesis and downstream responses (Adams et al., 2018). Phenotypic analysis showed that the germination of *lhy* mutant was impaired in the presence of

ABA, whereas *LHY* overexpression led to increased seed germination (Adams et al., 2018). Moreover, disruption of the clock proteins *LHY*, *CCA1*, and *GIGANTEA* (*GI*) resulted in germination defects in response to low temperature, alternating temperatures, and dry after-ripening (Penfield and Hall, 2009). Further investigations revealed that the transcript levels of central clock genes, such as *LHY*, *CCA1*, *GI*, *TOC1*, *PRR7*, and *PRR9*, do not oscillate in dry seeds (Penfield and Hall, 2009; Footitt et al., 2017). Those studies collectively showed that clock genes do not function in a circadian context in dry seeds and have crucial roles in the suppression of germination (Penfield and Hall, 2009; Footitt et al., 2011, 2017; Finch-Savage and Footitt, 2017; Figures 4 and 6). Interestingly, the expression of several clock genes displays rhythmic patterns during seed imbibition and the clock is restarted (Zhong et al., 1998; Penfield and Hall, 2009; Footitt et al., 2017). Consistently, we also found that *PRR5*, *PRR7*, and *PRR9*, similar to *ABI5*, are rhythmically expressed and responsive to ABA during seed germination (Figure 3). The expression phase of *ABI5* overlaps with those of *PRR5* and *PRR7*, consistent with their ability to interact with plants when expressed normally (Figures 1 and 3).

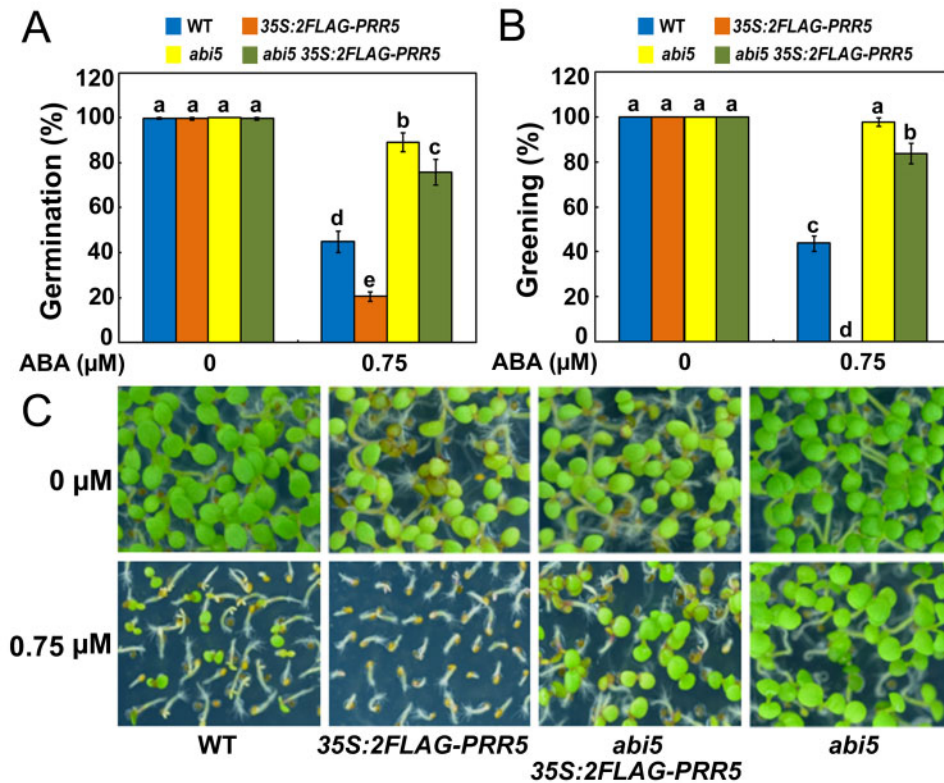


Figure 7 ABA hypersensitivity of *PRR5*-overexpressing plants requires functional *ABI5*. A, Germination of *PRR5*-overexpressing wild-type (*35S:2FLAG-PRR5-10*) and *abi5* (*abi5 35S:2FLAG-PRR5*) seeds. Seed germination was recorded 2 days after stratification on half-strength MS medium supplemented with 0.75- μM ABA. B, Cotyledon greening of WT, *35S:2FLAG-PRR5-10*, *abi5 35S:2FLAG-PRR5*, and *abi5*. Cotyledon greening was scored 6 days after stratification on half-strength MS medium supplemented with 0.75- μM ABA. Experiments were performed five times by analyzing different batches of seeds. Each batch of seeds of WT, *35S:2FLAG-PRR5-10*, *abi5 35S:2FLAG-PRR5*, and *abi5* was pooled from more than 60 independent plants. For each biological replicate, more than 120 seeds were examined. Values are means \pm SD. Bars with different letters are significantly different from each other ($P < 0.05$). Data were analyzed by analysis of variance (ANOVA). C, Seedlings of WT, *35S:2FLAG-PRR5-10*, *abi5 35S:2FLAG-PRR5*, and *abi5* 7 days after germination on half-strength MS medium containing 0.75- μM ABA.

Interestingly, all analyzed ABA-responsive genes are expressed in the same phase as *ABI5* (Figures 3 and 5). We speculated that protein levels for *PRR5/7* and *ABI5* may follow a similar pattern as their transcript accumulation, but this depends on possible post-transcriptional regulation. Moreover, *PRR7* transcription maintains high levels in the cold winter months and tracks seed dormancy in the deeply dormant winter annual ecotype Cape Verde Island (Footitt et al., 2013, 2014, 2017). It is possible that *PRR7*, as well as its close homologs *PRR5* and *PRR9* functions in the winter months to enhance ABA signaling and suppress seed germination.

Previous studies revealed that *PRR5*, *PRR7*, and *PRR9* play pivotal roles in multiple clock-associated physiological processes (Yamamoto et al., 2003; Nakamichi et al., 2005, 2007, 2010; Farré and Liu, 2013; Li et al., 2019; Yuan et al., 2021). For instance, *PRR5*, *PRR7*, and *PRR9* act as transcriptional repressors in the circadian clock and interact with *TOPLESS/TOPLESS-RELATED* (*TPL/TPR*) and *HISTONE DEACETYLASE6* (*HDA6*) to restrict the expression of the core clock genes *CCA1* and *LHY* (Nakamichi et al., 2010; Farré and Liu, 2013; Wang et al., 2013; Liu et al., 2016).

These three *PRR* proteins also directly suppress cold-induced expression of *CREPEAT BINDING FACTOR/DRE BINDING FACTOR1* (*CBF/DREB1*) genes and negatively modulate freezing tolerance (Nakamichi et al., 2009). Conversely, *PRR5*, *PRR7*, and *PRR9* stabilize *CO* to enhance the expression of *FLOWERING LOCUS T* (*FT*) and promote flowering (Nakamichi et al., 2007; Hayama et al., 2017). *PRR9* directly activates transcription of *ORESARA1* (*ORE1*) and positively regulates leaf senescence (Kim et al., 2018). Our data show that *PRR5* and *PRR7* stimulate the transcriptional function of *ABI5* to upregulate ABA-induced expression of *EM6* and *EM1* (Figure 9, B and C). *PRR5* also associates with the *EM6* and *EM1* promoters mainly through *ABI5* (Figure 10, A and B). Further phenotypic analysis found that the overexpression of *ABI5* and *PRR5* simultaneously confers plants much more sensitive to ABA during seed germination compared with the overexpression of *ABI5* alone (Figure 10, C–E). These results collectively demonstrate that *PRR5* is a positive modulator of *ABI5*-mediated signaling during seed germination. Given that the bZIP domain required for dimerization and DNA binding of *ABI5* is involved in the interaction with *PRR5* (Figure 2A), it is perhaps surprising that addition of

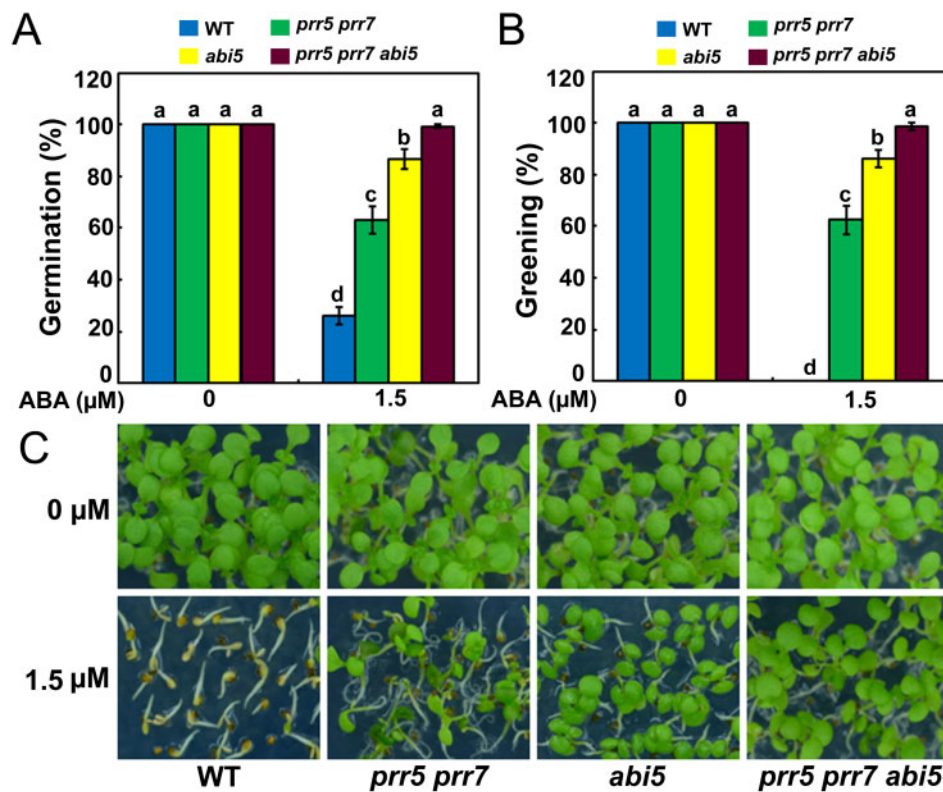


Figure 8 ABA responses of *prr5 prr7*, *abi5*, and *prr5 prr7 abi5* mutants during seed germination. A, Germination of the WT, *prr5 prr7*, *abi5*, and *prr5 prr7 abi5* mutants. Seed germination was recorded 3 days after stratification on half-strength MS medium supplemented with 1.5-μM ABA. B, Cotyledon greening of the WT, *prr5 prr7*, *abi5*, and *prr5 prr7 abi5* mutants. Cotyledon greening was scored 6 days after stratification on half-strength MS medium supplemented with 1.5-μM ABA. Experiments were performed five times by analyzing different batches of seeds. Each batch of seeds of the WT, *prr5 prr7*, *abi5*, and *prr5 prr7 abi5* mutants was pooled from more than 60 independent plants. For each biological replicate, more than 120 seeds were examined. Values are means ± SD. Bars with different letters are significantly different from each other ($P < 0.05$). Data were analyzed by analysis of variance (ANOVA). C, Seedlings of the WT, *prr5 prr7*, *abi5*, and *prr5 prr7 abi5* 6 days after germination on half-strength MS medium containing 1.5-μM ABA.

PRR5 enhances rather than inhibits ABI5 function. As PRR5 is recruited to *EM6* and *EM1* promoters in vivo through interacting with ABI5 (Figure 10, A and B), it is possible that the PRR5–ABI5 complex may function similarly as the dimers of ABI5 and have increased binding activity on promoters of target genes (e.g. *EM6* and *EM1*). In addition, PRR5 may compete with some repressors of ABI5 to bind the bZIP domain and interfere with the regulatory effects of those repressors. Nevertheless, the detailed biochemical mechanisms underlying how these PRR proteins synergize with ABI5 to modulate downstream genes deserve further investigation. Because these PRR proteins could have dual regulatory effects (negative or positive) on their targets and/or interacting partners, they may help to establish an appropriate balance among different development- or stress-signaling pathways so that growth and stress tolerance are optimized for the prevailing conditions.

Genetic analysis found that the progeny of *abi5* 35S:2FLAG-PRR5, similar to the *abi5* seeds, was also hyposensitive to ABA treatment compared with those of the wild-type (Figure 7, A–C). This result demonstrates that the

increased ABA signaling in PRR5-overexpressing plants requires ABI5. However, the possibility that PRR5 and PRR7 associate with other proteins to modulate ABA responses during seed germination cannot be ruled out. As shown in Figure 7, A–C, although the *abi5* 35S:2FLAG-PRR5 plants mimicked the phenotype of *abi5*, the performances of *abi5* 35S:2FLAG-PRR5 and *abi5* were significantly different. Consistent with this notion, the *prr5 prr7 abi5* triple mutant exhibited higher germination and greening percentages than *abi5* and *prr5 prr7* in the presence of ABA (Figure 8, A–C). ABI3 and ABI4 also are crucial transcriptional regulators of ABA signaling that are involved in repressing seed germination (Giraudat et al., 1992; Finkelstein, 1994; Finkelstein et al., 1998; Suzuki et al., 2001). However, no physical interaction between PRR5 or PRR7 and ABI3 or ABI4 was detected in yeast (Figure 1A). *EM6* and *EM1* are direct downstream target genes of ABI5 (Carles et al., 2002). The yeast one-hybrid screening found that PRR5 and PRR7 did not bind the promoter sequence of *EM6* and *EM1* (Supplemental Figures S6 and S7). These observations imply that PRR5 and PRR7 may not directly interact with ABI3, ABI4, *EM6*, and *EM1* in ABA signaling. Nevertheless, ChIP assays showed

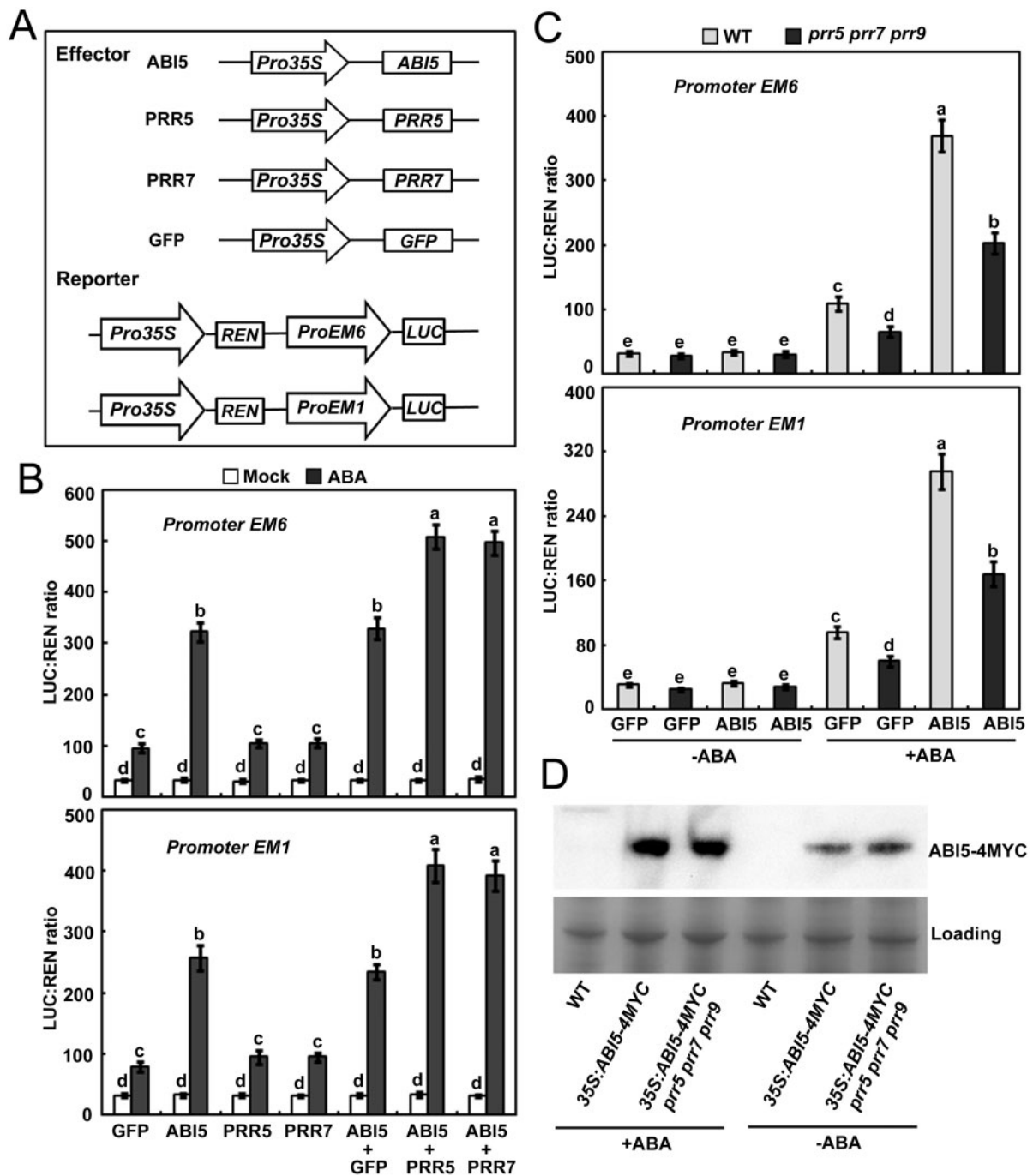


Figure 9 PRR5 promotes the transcriptional function of ABI5. A, Schematic of the effectors and reporters used in the transient transactivation assays. B, Transient dual-LUC reporter assays showing that PRR5 and PRR7 stimulate ABI5 to modulate the expression of *EM6* or *EM1* in response to 5- μ M ABA. Error bars show *SD* from three biological replicates using different batches of wild-type plants; each replication was from different wild-type leaves of more than 50 plants. C, Transient transcriptional activity assays showing that activation of the *EM6* and *EM1* promoter by ABI5 is decreased in the *prr5 prr7 prr9* mutant in response to 5- μ M ABA. Error bars indicate *SD* from three biological replicates using different batches of *prr5 prr7 prr9* mutants; each replication was from different leaves of more than 50 plants. Bars with different letters are significantly different from each other ($P < 0.05$). Data were analyzed by analysis of variance (ANOVA). D, Immunoblot analyzing the ABA-induced accumulation of ABI5 protein in the WT and *prr5 prr7 prr9* plants. Whole seedlings of 5-day-old WT, 35S:ABI5-4MYC, and 35S:ABI5-4MYC *prr5 prr7 prr9* were treated with 100- μ M ABA for 6 h before protein extraction. The accumulation of ABI5-4MYC fused protein was detected by immunoblotting with an anti-MYC antibody. Experiments were repeated three times with similar results.

that PRR5 may associate indirectly with the promoters of *EM6* and *EM1* through ABI5 (Figure 10, A and B). Further elucidation of potential associations of PRR5 and PRR7 with

other key regulators of ABA responses will further enhance our understanding of PRR5- and PRR7-mediated ABA signaling networks.

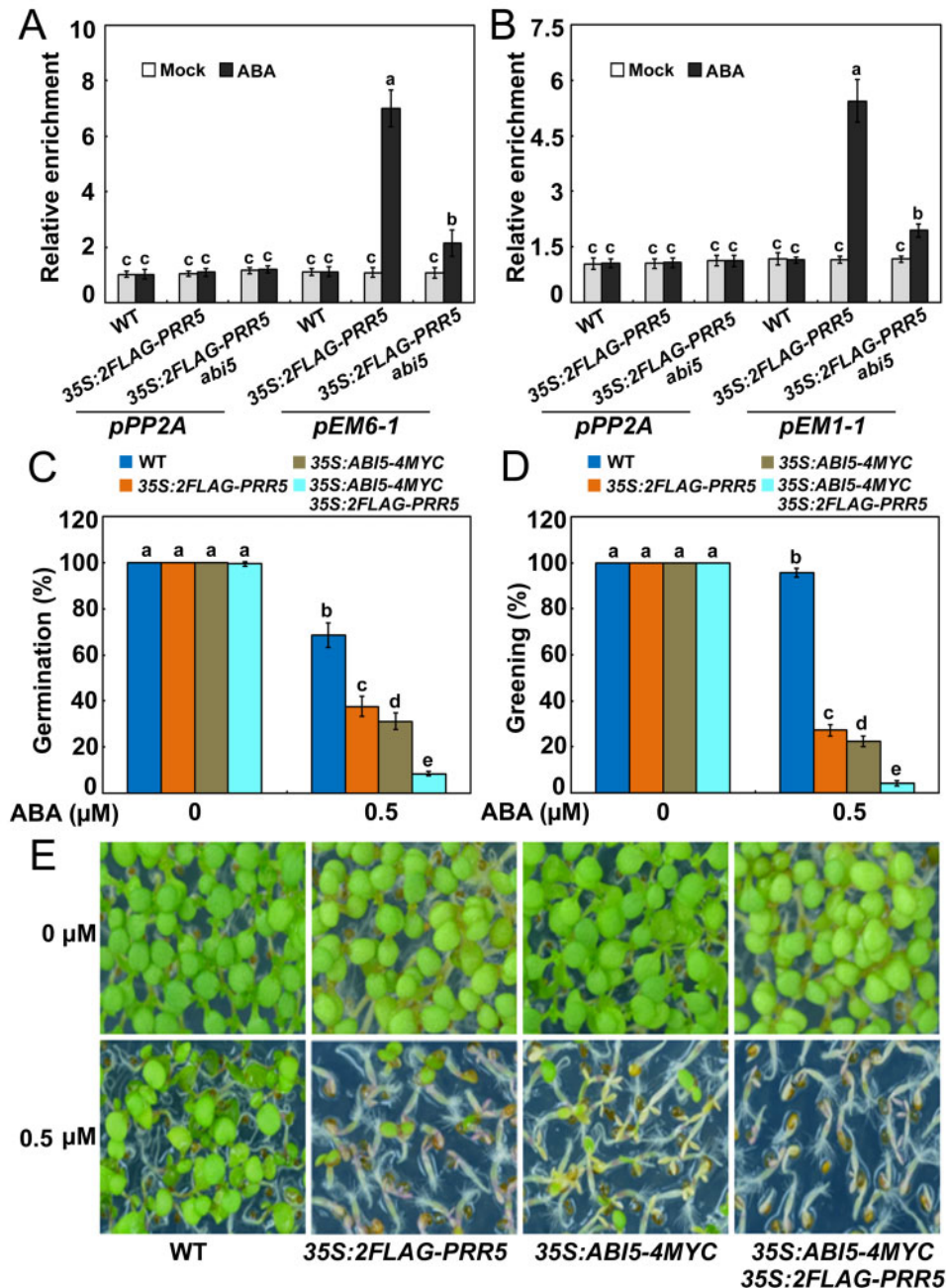


Figure 10 ABA hypersensitivity of *ABI5*-overexpressing plants is enhanced by *PRR5* overexpression during seed germination. A, B, ChIP-qPCR analysis of the relative enrichment of *PRR5* on the promoter regions of *EM6* (*pEM6-1*) and *EM1* (*pEM1-1*). Three different batches of 0.5- μ M ABA-treated (for 2.5 days) germinating seeds of *PRR5*-overexpressing WT (35S:2FLAG-*PRR5*-10) and *abi5* (*abi5* 35S:2FLAG-*PRR5*) pooled from more than 60 independent plants were used in ChIP using anti-FLAG antibody. qPCR data from the ChIP assay with anti-FLAG antibody with the *PP2A* (AT1G13320) promoter (*pPP2A*) as a negative control. Error bars show *sd* from three biological replicates using different batches of seeds, and different letters above the columns indicate significant differences based on analysis of variance (ANOVA; $P < 0.05$). C, Germination of *ABI5*-overexpressing WT (35S:ABI5-4MYC) and other related transgenic plants in response to ABA. Seed germination was recorded 2 days after stratification on half-strength MS medium supplemented with 0.5- μ M ABA. D, Cotyledon greening of 35S:ABI5-4MYC and other related transgenic plants in response to ABA. Cotyledon greening was scored 7 days after stratification on half-strength MS medium supplemented with 0.5- μ M ABA. Experiments were performed five times by analyzing different batches of seeds. Each batch of seeds of various genotypes was pooled from more than 60 independent plants. For each biological replicate, more than 120 seeds were examined. Values are means \pm *sd*. Bars with different letters are significantly different from each other ($P < 0.05$). Data were analyzed by ANOVA. E, Seedlings of 35S:ABI5-4MYC and other related transgenic plants 7 days after germination on half-strength MS medium containing 0.5- μ M ABA.

Our phenotypic investigation showed that seeds of the *prr5 prr7 prr9* triple mutant had much higher germination and greening percentages than seeds of *prr5 prr7* and *prr5 prr9* double mutants in response to ABA (Figure 4, A–C). This observation suggests that PRR9 may act together with PRR5 and PRR7 to positively modulate ABA responses during seed germination. However, unlike PRR5 and PRR7, PRR9 did not interact with ABI5 to form a protein complex (Figure 1, A and B), implying that PRR9 is not involved directly in ABI5-mediated ABA signaling through a PRR9–ABI5 interaction during seed germination. It is possible that PRR9 may function with PRR5 and PRR7 to mediate ABA responses via other modulators in ABA signaling. To better understand the molecular mechanism of the core circadian clock proteins PRR5/7/9-regulated ABA signaling in Arabidopsis, we constructed the simplified model involving PRR5/7/9 and ABI5 shown in Figure 11. When the concentration of ABA is elevated, ABA induces the expression of ABI5 as well as PRR5/7/9 during early stage of seed germination. PRR5 and PRR7 physically interact with ABI5 and stimulate its transcriptional function to enhance ABA signaling and maintain proper seed germination and postgerminative growth. In addition, PRR5, PRR7, and PRR9 may modulate ABA responses through other components of ABA signaling and negatively involve in ABA biosynthesis. Taken together with the fact that the transcript levels of *ABI5* displayed a circadian pattern in response to ABA (Figure 3), it is possible that circadian clock exhibits dual regulatory effects (at transcriptional level and protein level) on ABI5-mediated ABA signaling during seed germination. These dual regulations of ABI5-mediated ABA signaling by circadian clock may be adaptive mechanisms to establish appropriate ABA signaling during seed germination.

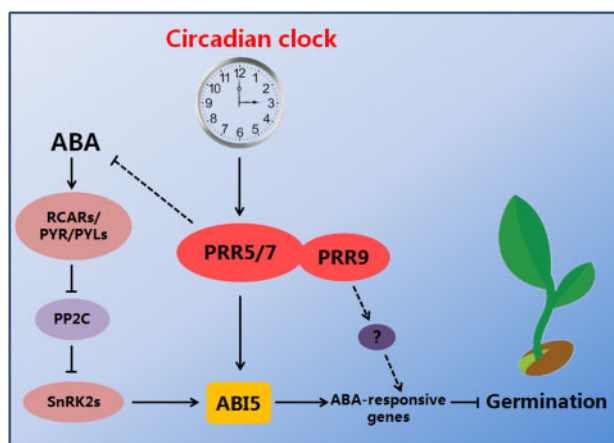


Figure 11 Simplified model for the interactions of ABI5 and PRR proteins in modulating ABA signaling during seed germination. When the concentration of ABA is elevated, ABA induces the expression of *ABI5* as well as *PRR5*, *PRR7*, and *PRR9* during seed germination. *PRR5* and *PRR7* physically interact with *ABI5* and stimulate its transcriptional function to enhance ABA signaling and maintain proper seed germination and postgerminative growth. In addition, *PRR5*, *PRR7*, and *PRR9* are negatively involved in ABA biosynthesis.

Zhao et al. (2019) reported that the brassinosteroid-related BES1 transcription factor physically associates with ABI5 and attenuates its transcriptional activity, thereby integrating brassinosteroid and ABA signals to modulate seed germination. In a previous study, we found that two proteins of the VQ family, VQ18 and VQ26, interact with ABI5 to form a complex (Pan et al., 2018). We also showed that VQ18 and VQ26 interfere with the transcriptional function of ABI5 to negatively mediate ABA signaling during seed germination and postgerminative growth. Chen et al. (2012) found that the Arabidopsis mediator subunit MEDIATOR 25 (MED25) directly bind ABI5 and represses ABA responses. MED25 affects the stability of ABI5 as well as the recruitment of ABI5 to the promoter sequences of its target genes (Chen et al., 2012; Guo et al., 2021). Conversely, Lim et al. (2013) showed that DELLA proteins interact with ABI5 to upregulate the expression of a subset of high temperature-inducible genes and suppress seed germination. Kim et al. (2016) found that the PHYTOCHROME-INTERACTING FACTOR 1 (PIF1) transcription factor functions together with ABI5 to bind the promoters of downstream target genes. Together, these results and our present findings suggest that the distinct regulatory effects of these interacting factors on ABI5 may be specific adaptive mechanisms to integrate diverse signals and establish appropriate ABA signaling levels, thereby ensuring efficient stress tolerance while minimizing the detrimental effect of ABA on germination and early seedling growth.

Materials and methods

Materials and plant growth conditions

Taq DNA polymerases were obtained from Takara Biotechnology (Dalian, China), and other common chemicals were purchased from Shanghai Sangon (Shanghai, China). The phytohormone ABA was purchased from Sigma-Aldrich. The wild-type and mutant *A. thaliana* plants used in this study were in the Columbia (Col-0) genetic background. The *prr5-1* (SALK_006280), *prr5-2* (SALK_135000C), *prr7-1* (SALK_091569C), and *prr7-2* (SALK_030430C) mutants were obtained from the Arabidopsis Resource Center at Ohio State University (<http://abrc.osu.edu>). The *prr5 prr7* double mutant was generated by genetically crossing *prr5-1* with *prr7-2* using standard techniques. Seeds of *prr5 prr9-1* (*prr5 prr9*) and *prr5-1 prr7-2 prr9-1* (*prr5 prr7 prr9*; Li et al., 2019) were provided by Prof. Lei Wang (Institute of Botany, Chinese Academy of Sciences). The transgenic line 35S:*ABI5-4MYC* (Chen et al., 2012) was provided by Prof. Chuanyou Li (Institute of Genetics and Developmental Biology, Chinese Academy of Sciences). To generate 35S:*2FLAG-PRR5* transgenic plants, the full-length cDNAs of *PRR5* behind the 2FLAG tag sequences were cloned into the binary vector pOCA30 in the sense orientation behind the CaMV 35S promoter (Hu et al., 2013). The Arabidopsis plants were grown in an artificial growth chamber at 22°C under a 16-h-light (100- $\mu\text{E m}^{-2}\text{s}^{-1}$, white fluorescent bulbs, full-spectrum light), 8-h-dark photoperiod.

Yeast two-hybrid assays

The full-length CDS of *CCA1*, *LHY*, *PRR9*, *PRR7*, *PRR5*, *PRR3*, and *TOC1* were fused to pGBKT7 (Clontech) to generate bait vectors (BD-CCA1, BD-LHY, BD-PRR, and BD-TOC1) that contain the Gal4 DNA-BD. Full-length CDS of *ABI5*, *ABI4*, and *ABI3* were inserted into pGADT7 (Clontech) to produce prey vectors (AD-ABI) with the Gal4 AD. To identify specific regions critical for the interactions, multiple truncated *PRR5* sequences were fused to pGBKT7 and truncated *ABI5* sequences were ligated with pGADT7. Yeast two-hybrid assays were performed as described previously (Hu et al., 2013). The bait and prey vectors were cotransformed into the yeast strain AH109 and physical interactions were indicated by the ability of cells to grow on dropout medium lacking Leu, Trp, His, and Ade for 4 days after plating. The primers used for cloning are listed in [Supplemental Data Set S1](#).

BiFC assays

The cDNA sequences encoding the C-terminal 64-amino acid enhanced YFP (cYFP) fragments and N-terminal 173-amino acid YFP (nYFP) were PCR amplified and individually inserted into tagging pFGC5941 plasmids to produce pFGC-cYFP and pFGC-nYFP, respectively (Kim et al., 2008). Full-length cDNA or the sequences encoding the 164 N-terminal residues of *ABI5* were cloned into pFGC-cYFP to produce a C-terminal in-frame fusion with cYFP (*ABI5*-cYFP or *ABI5*^{1–164}-cYFP). Full-length *PRR5*, *PRR7*, and *PRR9* were inserted into pFGC-nYFP to generate an N-terminal in-frame fusion with nYFP (*PRR5*-nYFP, *PRR7*-nYFP, and *PRR9*-nYFP). The resulting plasmids were transformed into *Agrobacterium tumefaciens* strain GV3101, and infiltration of wild tobacco (*N. benthamiana*) leaves was performed at zeitgeber time 12 as described previously (Hu et al., 2019). Infected leaves with YFP and DAPI fluorescence were detected 40–52 h after infiltration under a confocal laser-scanning microscope (Olympus, Tokyo, Japan). The experiments were performed at least four times using different batches of wild tobacco plants; for each biological replicate, more than 12 tobacco plants were infiltrated and more than 600 cells were analyzed. The primers used for cloning are listed in [Supplemental Data Set S1](#).

CoIP assays

To confirm the *ABI5*–*PRR5* interaction, whole proteins were extracted from samples harvested at ZT12 of 0.5- μ M ABA-treated (for 2.5 days) germinating seeds of transgenic *Arabidopsis* simultaneously overexpressing *ABI5* and *PRR5* (35S:*ABI5*-4MYC/35S:2FLAG-*PRR5*), which was constructed by introducing *PRR5* overexpression (35S:2FLAG-*PRR5*) into previously described 35S:*ABI5*-4MYC plants (Chen et al., 2012; Hu et al., 2019). Total proteins were prepared from *Arabidopsis* plants with an extraction buffer containing 50-mM Tris-HCl (pH 7.4), 1-mM EDTA, 150-mM NaCl, 10% (v/v) glycerol, 0.1% (v/v) Triton X-100, 1-mM PMSF, and 1x Roche Protease Inhibitor Cocktail. Immunoprecipitation experiments were performed with protein A/G Plus-agarose

beads following the manufacturer's protocol. In brief, cell lysates were precleared with the protein A/G Plus-agarose beads and incubated with the anti-MYC antibody (catalog no. A7470, Sigma-Aldrich; 1:250) and the protein A/G Plus-agarose beads at 4°C overnight in the extraction buffer. The beads were washed twice extensively with the extraction buffer and the co-immunoprecipitated protein was then detected by immunoblotting using an anti-FLAG antibody (catalog no. F7425, Sigma-Aldrich; 1:10,000).

Determination of germination and greening

The germination and greening of the wild-type and mutant seeds were determined as described previously (Hu et al., 2019). Briefly, seeds were first hydrated at ZT0, sown on medium with or without supplementation of ABA, and cold stratified at 4°C/dark for 4 days. Then, they were transferred at ZT0 to an artificial growth chamber at 22°C under 16-h light and 8-h-dark conditions for germination. Germination was determined based on the appearance of the embryonic axis (i.e. radicle protrusion) as observed under a microscope. Seedling greening was determined based on the appearance of green cotyledons on seedlings. To analyze the ABA sensitivity of germination and greening, seeds were plated on water agar (0.6%) medium or half-strength MS medium supplemented with ABA. More than three independent experiments were performed, and similar results were obtained.

RNA extraction and RT-qPCR

Total RNA was extracted from germinating seeds (2 days, harvested from ZT0 to ZT36) of the wild-type and/or *prp5 prr7 prr9* with or without 0.5- μ M ABA treatment using the Trizol reagent (Invitrogen) and RT-qPCR was performed as described previously (Han et al., 2020). Briefly, 1.0- μ g DNase-treated RNA was reverse-transcribed in a 20- μ L reaction volume with oligo (dT)₁₈ primer using Moloney murine leukemia virus reverse transcriptase (Fermentas). Then, 1.0- μ L cDNA was used for RT-qPCR with the SYBR Premix Ex Taq kit (Takara) on a Roche LightCycler 480 real-time PCR machine, according to the manufacturer's instructions. At least three biological replicates for each sample were used for RT-qPCR analysis. The *At1g13320* gene, which encodes a subunit of Ser/Thr PP2A and is stably expressed in seed samples during germination (Czechowski et al., 2005), was used as the control. The gene-specific primers used for the RT-qPCR are listed in [Supplemental Data Set S1](#).

Transient transactivation assays

Full-length *ABI5*, *PRR5*, *PRR7*, and *GFP* sequences were PCR amplified and cloned into the pGreenII 62-SK vector as effectors (Hellens et al., 2005). The putative promoter sequences of *EM1* (2,000 bp) and *EM6* (1273 bp) were amplified and fused to the pGreenII 0800-LUC vector as reporters (Hellens et al., 2005). Combinations of plasmids were transformed into the wild-type or *prp5 prr7 prr9* mutant *Arabidopsis* leaf mesophyll protoplasts according to the Sheen laboratory protocol (Sheen, 2001). Transfected cells

were cultured for 10–16 h with or without 5- μ M ABA treatment, and the relative LUC activity was analyzed using a Dual-Luciferase Reporter Assay system (Promega, Madison, WI, USA), which measured the activities of firefly LUC and the internal control *Renillareniformis* LUC (REN). The primers used for cloning are listed in [Supplemental Data Set S1](#).

Yeast one-hybrid assays

The yeast one-hybrid assays were performed using the Matchmaker Yeast One-Hybrid System Kit (Clontech) according to the manufacturer's instructions. Full-length CDS of *PRR5* and *PRR7* were inserted into pGADT7 to produce AD-PRR constructs. The putative promoter fragments of *EM1* and *EM6* were cloned into the pAbAi vector to generate pAbAi-pEM1 and pAbAi-pEM6, which were linearized by BstBI, and then transformed into the Y1HGOLD yeast strain. The transformed cells were grown in the SD/-Ura plate for 3 days. AD-PRR5 and AD-PRR7 were then transformed into the strain harboring pAbAi-pEM1 or pAbAi-pEM6 and selected on the SD/-Leu plate. Cotransformed cells were cultured on an SD/-Leu plate containing aureobasidin A (AbA, 200 μ g·L⁻¹) for 3 days, and positive clones were spotted in several yeast concentrations from dilution of 10⁰ (OD₆₀₀ = 1.0) to 10⁻³. The primers used for cloning are listed in [Supplemental Data Set S1](#).

ChIP assays

The ChIP assay was performed essentially as described previously ([Mukhopadhyay et al., 2008](#); [Jiang et al., 2014](#)). Briefly, germinating seeds (with or without 0.5- μ M ABA treatment for 2.5 days; harvested at ZT12) of the wild-type, *35S:2FLAG-PRR5-10*, and *abi535S:2FLAG-PRR5* were cross-linked in 1% formaldehyde and their chromatin isolated. The anti-FLAG antibody was used to immunoprecipitate the protein–DNA complex, and the precipitated DNA was purified using a PCR purification kit (Qiagen) for qPCR analysis. To quantitatively determine the PRR5–DNA (target promoter) binding, qPCR analysis was performed according to the procedure described previously ([Mukhopadhyay et al., 2008](#)) with the promoter sequence of *PP2A* (At1g13320) gene as an endogenous control. The relative quantity value was calculated by the 2^(-DDCt) method ([Mukhopadhyay et al., 2008](#)) and presented as the DNA binding ratio. The qPCR data from ChIP assay with anti-FLAG antibody with the *PP2A* (At1g13320) promoter as a negative control. The results shown were obtained from three biological replicates using different batches of seeds. The primers used for ChIP assays are listed in [Supplemental Data Set S1](#).

Statistical analysis

Statistical analysis was performed by analysis of variance. The results are shown in [Supplemental Table S2](#).

Accession numbers

The genes discussed in this article can be found in the Arabidopsis Genome Initiative database as follows: *ABI5*,

AT2G36270; *ABI4*, AT2G40220; *ABI3*, AT3G24650; *PRR5*, AT5G24470; *PRR7*, AT5G02810; *PRR9*, AT2G46790; *PRR3*, AT5G60100; *TOC1*, AT5G61380; *LHY*, AT1G01060; *CCA1*, AT2G46830; *EM1*, AT3G51810; *EM6*, AT2G40170; *RAB18*, AT1G43890; and *RD29B*, AT5G52300.

Supplemental data

The following materials are available in the online version of this article.

Supplemental Figure S1. Yeast two-hybrid assay analysis of the interactions of *ABI5* with *PRR5*, *PRR3*, *TOC1*, *LHY*, and *CCA1* proteins.

Supplemental Figure S2. ABA responses of *prp5* and *prp7* single mutants during seed germination.

Supplemental Figure S3. ABA responses of *prp5 prp7*, *prp5 prp9*, and *prp5 prp7 prp9* mutants during seed germination on water agar medium.

Supplemental Figure S4. RT-qPCR analysis of *PRR5* expression in overexpression lines.

Supplemental Figure S5. ABA responses of *PRR5*-overexpressing plants during seed germination on water agar medium.

Supplemental Figure S6. Yeast one-hybrid assay on binding of *PRR5* and *PRR7* to the promoter region of *EM6*.

Supplemental Figure S7. Yeast one-hybrid assay on binding of *PRR5* and *PRR7* to the promoter region of *EM1*.

Supplemental Table S1. Information for *ABI5*-binding promoter sequences of *EM6* and *EM1* (*pEM6-1* and *pEM1-1*).

Supplemental Table S2. Analysis of variance (ANOVA) tables.

Supplemental Data Set S1. Primers used for cloning, RT-qPCR, and ChIP analysis.

Acknowledgments

We thank Lei Wang (Institute of Botany, Chinese Academy of Sciences), Chuanyou Li (Institute of Genetics and Developmental Biology, Chinese Academy of Sciences), and Zhixiang Chen (Purdue University) for sharing research materials. We thank the Arabidopsis Resource Center at Ohio State University for *prp5* and *prp7* mutant seeds. We also thank the Central Laboratory of Xishuangbanna Tropical Botanical Garden and Kunming Institute of Botany, Chinese Academy of Sciences for technical support.

Funding

This work was supported by the National Natural Science Foundation of China (grant nos. 31870258 and 31922009 to Y.H.), the Yunnan Fundamental Research Projects (grant no. 2018FA012 to Y.J.; grant nos. 2019FI006 and 202001AV070009 to Y.H.; grant no. 202001AT070118 to X.H.), the CAS “Light of West China” Program (to X.H.), the Youth Innovation Promotion Association of the Chinese Academy of Sciences (grant no. Y201973 to Y.H.), Yunnan High Level Talents Special Support Plan (grant YNWR-QNBJ-2018-075 to Y.H.), and Candidates of the Young and Middle

Aged Academic Leaders of Yunnan Province (grant no. 2017HB067 to Y.H.).

Conflict of interest statement. None declared.

References

- Adams S, Grundy J, Veflingstad SR, Dyer NP, Hannah MA, Ott S, Carré IA (2018) Circadian control of abscisic acid biosynthesis and signaling pathways revealed by genome-wide analysis of LHY binding targets. *New Phytol* **220**: 893–907
- Adams S, Manfield I, Stockley P, Carré IA (2015) Revised morning loops of the *Arabidopsis* circadian clock based on analyses of direct regulatory interactions. *PLoS One* **10**: e0143943
- Alabadi D, Oyama T, Yanovsky MJ, Harmon FG, Mas P, Kay SA (2001) Reciprocal regulation between TOC1 and LHY/CCA1 within the *Arabidopsis* circadian clock. *Science* **293**: 880–883
- Albertos P, Romero-Puertas MC, Tatematsu K, Mateos I, Sánchez-Vicente I, Nambara E, Lorenzo O (2015) S-nitrosylation triggers ABI5 degradation to promote seed germination and seedling growth. *Nat Commun* **6**: 8669
- Alboresi A, Gustin C, Leydecker MT, Bedu M, Meyer C, Truong HN (2005) Nitrate, a signal relieving seed dormancy in *Arabidopsis*. *Plant Cell Environ* **28**: 500–512
- Atkins KA, Dodd AN (2014) Circadian regulation of chloroplasts. *Curr Opin Plant Biol* **21**: 43–50
- Brocard IM, Lynch TJ, Finkelstein RR (2002) Regulation and role of the *Arabidopsis* *abscisic acid-insensitive 5* gene in abscisic acid, sugar, and stress response. *Plant Physiol* **129**: 1533–1543
- Burschka C, Tenhunen JD, Hartung W (1983) Diurnal variations in abscisic acid content and stomatal response to applied abscisic acid in leaves of irrigated and non-irrigated *Arbutus unedo* plants under naturally fluctuating environmental conditions. *Oecologia* **58**: 128–131
- Carles C, Bies-Etheve N, Aspart L, Léon-Kloosterziel KM, Koornneef M, Echeverria M, Delseny M (2002) Regulation of *Arabidopsis thaliana* *Em* genes: role of ABI5. *Plant J* **30**: 373–383
- Carré I, Veflingstad SR (2013) Emerging design principles in the *Arabidopsis* circadian clock. *Semin Cell Dev Biol* **24**: 393–398
- Chen R, Jiang H, Li L, Zhai Q, Qi L, Zhou W, Liu X, Li H, Zheng W, Sun J, et al. (2012) The *Arabidopsis* mediator subunit MED25 differentially regulates jasmonate and abscisic acid signaling through interacting with the MYC2 and ABI5 transcription factors. *Plant Cell* **24**: 2898–2916
- Chen X, Ding Y, Yang Y, Song C, Wang B, Yang S, Guo Y, Gong Z (2021) Protein kinases in plant responses to drought, salt, and cold stress. *J. Integr Plant Biol* **63**: 53–78
- Covington MF, Maloof JN, Straume M, Kay SA, Harmer SL (2008) Global transcriptome analysis reveals circadian regulation of key pathways in plant growth and development. *Genome Biol* **9**: R130
- Cutler SR, Rodriguez PL, Finkelstein RR, Abrams SR (2010) Abscisic acid: emergence of a core signaling network. *Annu Rev Plant Biol* **61**: 651–679
- Czechowski T, Stitt M, Altmann T, Udvardi MK, Scheible WR (2005) Genome-wide identification and testing of superior reference genes for transcript normalization in *Arabidopsis*. *Plant Physiol* **139**: 5–17
- Dai, M, Xue Q, Mccray T, Margavage K, Chen F, Lee JH, Nezames CD, Guo L, Terzhagi W, Wan J, et al. (2013) The PP6 phosphatase regulates ABI5 phosphorylation and abscisic acid signaling in *Arabidopsis*. *Plant Cell* **25**: 517–534
- Dave A, Hernández ML, He Z, Andriotis VM, Vaistij FE, Larson TR, Graham IA (2011) 12-oxo-Phytodienoic acid accumulation during seed development represses seed germination in *Arabidopsis*. *Plant Cell* **23**: 583–599
- Dekkers BJ, Schuurmans JA, Smeekens SC (2004) Glucose delays seed germination in *Arabidopsis thaliana*. *Planta* **218**: 579–588
- Dodd AN, Salathia N, Hall A, Kévei E, Tóth R, Nagy F, Hibberd JM, Millar AJ, Webb AA (2005) Plant circadian clocks increase photosynthesis, growth, survival, and competitive advantage. *Science* **309**: 630–633
- Dunlap JC (1999) Molecular bases for circadian clocks. *Cell* **96**: 271–290
- Fan W., Xu JM, Wu P, Yang ZX, Lou HQ, Chen WW, Jin JF, Zheng SJ, Yang JL (2019). Alleviation by abscisic acid of Al toxicity in rice bean is not associated with citrate efflux but depends on ABI5-mediated signal transduction pathways. *J Integr Plant Biol* **61**: 140–154
- Farré EM, Liu T (2013) The PRR family of transcriptional regulators reflects the complexity and evolution of plant circadian clocks. *Curr Opin Plant Biol* **16**: 621–629
- Finch-Savage WE, Footitt S (2017) Seed dormancy cycling and the regulation of dormancy mechanisms to time germination in variable field environments. *J Exp Bot* **68**: 843–856
- Finch-Savage WE, Leubner-Metzger G (2006) Seed dormancy and the control of germination. *New Phytol* **171**: 501–523
- Finkelstein R, Gampala SS, Lynch TJ, Thomas TL, Rock CD (2005) Redundant and distinct functions of the ABA response loci *ABA-INSENSITIVE (ABI) 5* and *ABRE-BINDING FACTOR (ABF) 3*. *Plant Mol Biol* **59**: 253–267
- Finkelstein R, Reeves W, Ariizumi T, Steber C (2008) Molecular aspects of seed dormancy. *Annu Rev Plant Biol* **59**: 387–415
- Finkelstein RR (1994) Mutations at two new *Arabidopsis* ABA response loci are similar to the *abi3* mutations. *Plant J* **5**: 756–771
- Finkelstein RR, Lynch TJ (2000a) The *Arabidopsis* abscisic acid response gene *ABI5* encodes a basic leucine zipper transcription factor. *Plant Cell* **12**: 599–609
- Finkelstein RR, Lynch TJ (2000b) Abscisic acid inhibition of radicle emergence but not seedling growth is suppressed by sugars. *Plant Physiol* **122**: 1179–1186
- Finkelstein RR, Gampala SS, Rock CD (2002) Abscisic acid signaling in seeds and seedlings. *Plant Cell* **14**: S15–S45
- Finkelstein RR, Wang ML, Lynch TJ, Rao S, Goodman HM (1998) The *Arabidopsis* abscisic acid response locus *ABI4* encodes an APETALA 2 domain protein. *Plant Cell* **10**: 1043–1054
- Footitt S, Clay HA, Dent K, Finch-Savage WE (2014) Environment sensing in spring-dispersed seeds of a winter annual *Arabidopsis* influences the regulation of dormancy to align germination potential with seasonal changes. *New Phytol* **202**: 929–939
- Footitt S, Douterelo-Soler I, Clay H, Finch-Savage WE (2011) Dormancy cycling in *Arabidopsis* seeds is controlled by seasonally distinct hormone-signaling pathways. *Proc Natl Acad Sci U S A* **108**: 20236–20241
- Footitt S, Huang Z, Clay HA, Mead A, Finch-Savage WE (2013) Temperature, light and nitrate sensing coordinate *Arabidopsis* seed dormancy cycling, resulting in winter and summer annual phenotypes. *Plant J* **74**: 1003–1015
- Footitt S, Ölçer-Footitt H, Hambidge AJ, Finch-Savage WE (2017) A laboratory simulation of *Arabidopsis* seed dormancy cycling provides new insight into its regulation by clock genes and the dormancy-related genes *DOG1*, *MFT*, *CIPK23* and *PHYA*. *Plant Cell Environ* **40**: 1474–1486
- Frank A, Mantioli CC, Viana AJC, Hearn TJ, Kusakina J, Belbin FE, Newman DW, Yochikawa A, Cano-Ramirez DL, Chembath A, et al. (2018). Circadian entrainment in *Arabidopsis* by the sugar-responsive transcription factor bZIP63. *Curr Biol* **28**: 2597–2606
- Fujii H, Zhu JK (2009) *Arabidopsis* mutant deficient in 3 abscisic acid-activated protein kinases reveals critical roles in growth, reproduction, and stress. *Proc Natl Acad Sci U S A* **106**: 8380–8385
- Fujii H, Verslues PE, Zhu JK (2007) Identification of two protein kinases required for abscisic acid regulation of seed germination,

- root growth, and gene expression in *Arabidopsis*. *Plant Cell* **19**: 485–494
- Fukushima A, Kusano M, Nakamichi N, Kobayashi M, Hayashi N, Sakakibara H, Mizuno T, Saito K** (2009) Impact of clock-associated *Arabidopsis* pseudo-response regulators in metabolic coordination. *Proc Natl Acad Sci U S A* **106**: 7251–7256
- Furihata T, Maruyama K, Fujita Y, Umezawa T, Yoshida R, Shinozaki K, Yamaguchi-Shinozaki K** (2006) Abscisic acid-dependent multisite phosphorylation regulates the activity of a transcription activator AREB1. *Proc Natl Acad Sci U S A* **103**: 1988–1993
- Garcia ME, Lynch T, Peeters J, Snowden C, Finkelstein R** (2008) A small plant-specific protein family of ABI five binding proteins (AFPs) regulates stress response in germinating *Arabidopsis* seeds and seedlings. *Plant Mol Biol* **67**: 643–658
- Garciarrubio A, Legaria JP, Covarrubias AA** (1997) Abscisic acid inhibits germination of mature *Arabidopsis* seeds by limiting the availability of energy and nutrients. *Planta* **203**: 182–187
- Gendron JM, Pruneda-Paz JL, Doherty CJ, Gross AM, Kang SE, Kay SA** (2012) *Arabidopsis* circadian clock protein, TOC1, is a DNA-binding transcription factor. *Proc Natl Acad Sci U S A* **109**: 3167–3172
- Giraudat J, Hauge BM, Valon C, Smalle J, Parcy F, Goodman HM** (1992) Isolation of the *Arabidopsis* *ABI3* gene by positional cloning. *Plant Cell* **4**: 1251–1261
- Greenham K, McClung CR** (2015) Integrating circadian dynamics with physiological processes in plants. *Nat Rev Genet* **16**: 598–610
- Grundy J, Stoker C, Carré IA** (2015) Circadian regulation of abiotic stress tolerance in plants. *Front Plant Sci* **6**: 648
- Guan C, Wang X, Feng J, Hong S, Liang Y, Ren B, Zuo J** (2014) Cytokinin antagonizes abscisic acid-mediated inhibition of cotyledon greening by promoting the degradation of ABSCISIC ACID INSENSITIVE5 protein in *Arabidopsis*. *Plant Physiol* **164**: 1515–1526
- Gubler F, Millar AA, Jacobsen JV** (2005) Dormancy release, ABA and pre-harvest sprouting. *Curr Opin Plant Biol* **8**: 183–187
- Guo P, Chong L, Wu F, Hsu CC, Li C, Zhu JK, Zhu Y** (2021) Mediator tail module subunits MED16 and MED25 differentially regulate abscisic acid signaling in *Arabidopsis*. *J Integr Plant Biol* **63**: 802–815
- Han X, Zhang M, Yang M, Hu Y** (2020) *Arabidopsis* JAZ proteins interact with and suppress RHD6 transcription factor to regulate jasmonate-stimulated root hair development. *Plant Cell* **32**: 1049–1062
- Harmer SL** (2009) The circadian system in higher plants. *Annu Rev Plant Biol* **60**: 357–377
- Harmer SL, Hogenesch JB, Straume M, Chang HS, Han B, Zhu T, Wang X, Kreps JA, Kay SA** (2000) Orchestrated transcription of key pathways in *Arabidopsis* by the circadian clock. *Science* **290**: 2110–2113
- Hayama R, Sarid-Krebs L, Richter R, Fernández V, Jang S, Coupland G** (2017) PSEUDO RESPONSE REGULATORS stabilize CONSTANS protein to promote flowering in response to day length. *EMBO J* **36**: 904–918
- Hellens RP, Allan AC, Friel EN, Bolitho K, Grafton K, Templeton MD, Karunairetnam S, Gleave AP, Laing WA** (2005) Transient expression vectors for functional genomics, quantification of promoter activity and RNA silencing in plants. *Plant Methods* **1**: 13
- Hu Y, Yu D** (2014) BRASSINOSTEROID INSENSITIVE2 interacts with ABSCISIC ACID INSENSITIVE5 to mediate the antagonism of brassinosteroids to abscisic acid during seed germination in *Arabidopsis*. *Plant Cell* **26**: 4394–4408
- Hu Y, Han X, Yang M, Zhang M, Pan J, Yu D** (2019) The transcription factor INDUCER OF CBF EXPRESSION1 interacts with ABSCISIC ACID INSENSITIVE5 and DELLA proteins to fine-tune abscisic acid signaling during seed germination in *Arabidopsis*. *Plant Cell* **31**: 1520–1538
- Hu Y, Jiang L, Wang F, Yu D** (2013) Jasmonate regulates the inducer of *cbf* expression-C-repeat binding factor/DRE binding factor1 cascade and freezing tolerance in *Arabidopsis*. *Plant Cell* **25**: 2907–2924
- Hsu PY, Harmer SL** (2014) Wheels within wheels: the plant circadian system. *Trends Plant Sci* **19**: 240–249
- Ji H, Wang S, Cheng C, Li R, Wang Z, Jenkins GI, Kong F, Li X** (2019) The RCC1 family protein SAB1 negatively regulates ABI5 through multidimensional mechanisms during postgermination in *Arabidopsis*. *New Phytol* **222**: 907–922
- Jiang Y, Liang G, Yang S, Yu D** (2014) *Arabidopsis* WRKY57 functions as a node of convergence for jasmonic acid- and auxin-mediated signaling in jasmonic acid-induced leaf senescence. *Plant Cell* **26**: 230–245
- Ju L, Jing Y, Shi P, Liu J, Chen J, Yan J, Chu J, Chen KM, Sun J** (2019) JAZ proteins modulate seed germination through interacting with ABI5 in bread wheat and *Arabidopsis*. *New Phytol* **223**: 246–260
- Kiba T, Henriques R, Sakakibara H, Chua NH** (2007) Targeted degradation of PSEUDO-RESPONSE REGULATOR5 by an SCF^{ZTL} complex regulates clock function and photomorphogenesis in *Arabidopsis thaliana*. *Plant Cell* **19**: 2516–2530
- Kim H, Kim HJ, Vu QT, Jung S, McClung CR, Hong S, Nam HG** (2018) Circadian control of ORE1 by PRR9 positively regulates leaf senescence in *Arabidopsis*. *Proc Natl Acad Sci U S A* **115**: 8448–8453
- Kim J, Kang H, Park J, Kim W, Yoo J, Lee N, Kim J, Yoon TY, Choi G** (2016) PIF1-interacting transcription factors and their binding sequence elements determine the *in vivo* targeting sites of PIF1. *Plant Cell* **28**: 1388–1405
- Kim KC, Lai Z, Fan B, Chen Z** (2008) *Arabidopsis* WRKY38 and WRKY62 transcription factors interact with histone deacetylase19 in basal defense. *Plant Cell* **20**: 2357–2371
- Kim TS, Wang L, Kim YJ, Somers DE** (2020) Compensatory mutations in GI and ZTL may modulate temperature compensation in the circadian clock. *Plant Physiol* **182**: 1130–1141
- Kobayashi Y, Murata M, Minami H, Yamamoto S, Kagaya Y, Hobo T, Yamamoto A, Hattori T** (2005) Abscisic acid activated SNRK2 protein kinases function in the gene-regulation pathway of ABA signal transduction by phosphorylating ABA response element-binding factors. *Plant J* **44**: 939–949
- Lee JH, Yoon HJ, Terzaghi W, Martinez C, Dai M, Li J, Byun MO, Deng XW** (2010) DWA1 and DWA2, two *Arabidopsis* DWD protein components of CUL4-based E3 ligases, act together as negative regulators in ABA signal transduction. *Plant Cell* **22**: 1716–1732
- Lee KH, Piao HL, Kim H-Y, Choi SM, Jiang F, Hartung W, Hwang I, Kwak JM, Lee I-J, Hwang I** (2006) Activation of glucosidase via stress-induced polymerization rapidly increases active pools of abscisic acid. *Cell* **126**: 1109–1120
- Li B, Wang Y, Zhang Y, Tian W, Chong K, Jang JC, Wang L** (2019) PRR5, 7 and 9 positively modulate TOR signaling-mediated root cell proliferation by repressing TANDEM ZINC FINGER1 in *Arabidopsis*. *Nucleic Acids Res* **47**: 5001–5015
- Li N, Zhang Y, He Y, Wang Y, Wang L** (2020a) Pseudo response regulators regulate photoperiodic hypocotyl growth by repressing *PIF4/5* transcription. *Plant Physiol* **183**: 686–699
- Li Y, Wang L, Yuan L, Song Y, Sun J, Jia Q, Xie Q, Xu X** (2020b) Molecular investigation of organ-autonomous expression of *Arabidopsis* circadian oscillators. *Plant Cell Environ* **43**: 1501–1512
- Lim S, Park J, Lee N, Jeong J, Toh S, Watanabe A, Kim J, Kang H, Kim DH, Kawakami N, et al.** (2013) ABA-insensitive3, ABA-insensitive5, and DELLAs interact to activate the expression of SOMNUS and other high-temperature-inducible genes in imbibed seeds in *Arabidopsis*. *Plant Cell* **25**: 4863–4878
- Liu H, Stone SL** (2010) Abscisic acid increases *Arabidopsis* ABI5 transcription factor levels by promoting KEG E3 ligase self-ubiquitination and proteasomal degradation. *Plant Cell* **22**: 2630–2641

- Liu T, Carlsson J, Takeuchi T, Newton L, Farré EM (2013) Direct regulation of abiotic responses by the *Arabidopsis* circadian clock component PRR7. *Plant J* **76**: 101–114
- Liu TL, Newton L, Liu MJ, Shiu SH, Farré EM (2016) A G-Box-like motif is necessary for transcriptional regulation by circadian pseudo-response regulators in *Arabidopsis*. *Plant Physiol* **170**: 528–539
- Lopez-Molina L, Chua NH (2000) A null mutation in a bZIP factor confers ABA-insensitivity in *Arabidopsis thaliana*. *Plant Cell Physiol* **41**: 541–547
- Lopez-Molina L, Mongrand S, Chua NH (2001) A postgermination-developmental arrest checkpoint is mediated by abscisic acid and requires the ABI5 transcription factor in *Arabidopsis*. *Proc Natl Acad Sci U S A* **98**: 4782–4787
- Lopez-Molina L, Mongrand S, McLachlin DT, Chait BT, Chua NH (2002) ABI5 acts downstream of ABI3 to execute an ABA-dependent growth arrest during germination. *Plant J* **32**: 317–328
- Lynch TJ, Erickson BJ, Miller DR, Finkelstein RR (2017) ABI5-binding proteins (AFPs) alter transcription of ABA-induced genes via a variety of interactions with chromatin modifiers. *Plant Mol Biol* **93**: 403–418
- Ma Y, Szostkiewicz I, Korte A, Moes D, Yang Y, Christmann A, Grill E (2009) Regulators of PP2C phosphatase activity function as abscisic acid sensors. *Science* **324**: 1064–1068
- Matsushika A, Makino S, Kojima M, Mizuno T (2000) Circadian waves of expression of the APRR1/TOC1 family of pseudo-response regulators in *Arabidopsis thaliana*: insight into the plant circadian clock. *Plant Cell Physiol* **41**: 1002–1012
- McAdam SAM, Brodribb TJ, Ross JJ, Jordan GJ (2011) Augmentation of abscisic acid (ABA) levels by drought does not induce short-term stomatal sensitivity to CO₂ in two divergent conifer species. *J Exp Bot* **62**: 195–203
- Michael TP, Breton G, Hazen SP, Priest H, Mockler TC, Kay SA, Chory J (2008) A morning-specific phytohormone gene expression program underlying rhythmic plant growth. *PLoS Biol* **6**: e225
- Miura K, Lee J, Jin JB, Yoo CY, Miura T, Hasegawa PM (2009) Sumoylation of ABI5 by the *Arabidopsis* SUMO E3 ligase SIZ1 negatively regulates abscisic acid signaling. *Proc Natl Acad Sci USA* **106**: 5418–5423
- Miyazono K, Miyakawa T, Sawano Y, Kubota K, Kang H-J, Asano A, Miyauchi Y, Takahashi M, Zhi Y, Fujita Y, et al. (2009) Structural basis of abscisic acid signaling. *Nature* **462**: 609–614
- Mizuno T, Yamashino T (2008) Comparative transcriptome of diurnally oscillating genes and hormone-responsive genes in *Arabidopsis thaliana*: insight into circadian clock-controlled daily responses to common ambient stresses in plants. *Plant Cell Physiol* **49**: 481–487
- Mukhopadhyay A, Deplancke B, Walhout AJM, Tissenbaum HA (2008) Chromatin immunoprecipitation (ChIP) coupled to detection by quantitative real-time PCR to study transcription factor binding to DNA in *Caenorhabditis elegans*. *Nat Protoc* **3**: 698–709
- Murakami M, Yamashino T, Mizuno T (2004) Characterization of circadian-associated APRR3 pseudo-response regulator belonging to the APRR1/TOC1 quintet in *Arabidopsis thaliana*. *Plant Cell Physiol* **45**: 645–650
- Nakamichi N (2020) The transcriptional network in the *Arabidopsis* circadian clock system. *Genes (Basel)* **11**: 1284
- Nakamichi N, Kita M, Ito S, Yamashino T, Mizuno T (2005) PSEUDO-RESPONSE REGULATORS, PRR9, PRR7 and PRR5, together play essential roles close to the circadian clock of *Arabidopsis thaliana*. *Plant Cell Physiol* **46**: 686–698
- Nakamichi N, Kita M, Niinuma K, Ito S, Yamashino T, Mizoguchi T, Mizuno T (2007) *Arabidopsis* clock-associated pseudo-response regulators PRR9, PRR7 and PRR5 coordinately and positively regulate flowering time through the canonical CONSTANS dependent photoperiodic pathway. *Plant Cell Physiol* **48**: 822–832
- Nakamichi N, Kiba T, Henriques R, Mizuno T, Chua NH, Sakakibara H (2010) PSEUDO-RESPONSE REGULATORS 9, 7, and 5 are transcriptional repressors in the *Arabidopsis* circadian clock. *Plant Cell* **22**: 594–605
- Nakamichi N, Kiba T, Kamioka M, Suzuki T, Yamashino T, Higashiyama T, Sakakibara H, Mizuno T (2012) Transcriptional repressor PRR5 directly regulates clock-output pathways. *Proc Natl Acad Sci USA* **109**: 17123–17128
- Nakamichi N, Kusano M, Fukushima A, Kita M, Ito S, Yamashino T, Saito K, Sakakibara H, Mizuno T (2009) Transcript profiling of an *Arabidopsis* PSEUDO RESPONSE REGULATOR arrhythmic triple mutant reveals a role for the circadian clock in cold stress response. *Plant Cell Physiol* **50**: 447–462
- Nakamura S, Lynch TJ, Finkelstein RR (2001) Physical interactions between ABA response loci of *Arabidopsis*. *Plant J* **26**: 627–635
- Nakashima K, Fujita Y, Kanamori M, Katagiri T, Umezawa T, Kidokoro S, Maruyama K, Yoshida T, Ishiyama K, Kobayashi M, et al. (2009) Three *Arabidopsis* SnRK2 protein kinases, SRK2D/SnRK2.2, SRK2E/SnRK2.6/OST1 and SRK2I/SnRK2.3, involved in ABA signaling are essential for the control of seed development and dormancy. *Plant Cell Physiol* **50**: 1345–1363
- Nishimura N, Hitomi K, Arvai AS, Rambo RP, Hitomi C, Cutler SR, Schroeder JI, Getzoff ED (2009) Structural mechanism of abscisic acid binding and signaling by dimeric PYR1. *Science* **326**: 1373–1379
- Nováková M, Motyka V, Dobrev PI, Malbeck J, Gaudinová A, Vanková R (2005) Diurnal variation of cytokinin, auxin and abscisic acid levels in tobacco leaves. *J Exp Bot* **56**: 2877–2883
- Pan J, Hu Y, Wang H, Guo Q, Chen Y, Howe GA, Yu D (2020) Molecular mechanism underlying the synergistic effect of jasmonate on abscisic acid signaling during seed germination in *Arabidopsis*. *Plant Cell* **32**: 3846–3865
- Pan J, Wang H, Hu Y, Yu D (2018) *Arabidopsis* VQ18 and VQ26 proteins interact with ABI5 transcription factor to negatively modulate ABA response during seed germination. *Plant J* **95**: 529–544
- Park SY, Fung P, Nishimura N, Jensen DR, Fujii H, Zhao Y, Lumba S, Santiago J, Rodrigues A, Chow T-F F, et al. (2009) Abscisic acid inhibits type 2C protein phosphatases via the PYR/PYL family of START proteins. *Science* **324**: 1068–1071
- Penfield S, Hall A (2009) A role for multiple circadian clock genes in the response to signals that break seed dormancy in *Arabidopsis*. *Plant Cell* **21**: 1722–1732
- Perales M, Más P (2007) A functional link between rhythmic changes in chromatin structure and the *Arabidopsis* biological clock. *Plant Cell* **19**: 2111–2123
- Pokhilkov A, Fernández AP, Edwards KD, Southern MM, Halliday KJ, Millar AJ (2012) The clock gene circuit in *Arabidopsis* includes a repressilator with additional feedback loops. *Mol Syst Biol* **8**: 574
- Pruneda-Paz JL, Kay SA (2010) An expanding universe of circadian networks in higher plants. *Trends Plant Sci* **15**: 259–265
- Reeves WM, Lynch TJ, Mobin R, Finkelstein RR (2011) Direct targets of the transcription factors ABA-insensitive (ABI)4 and ABI5 reveal synergistic action by ABI4 and several bZIP ABA response factors. *Plant Mol Biol* **75**: 347–363
- Sanchez SE, Kay SA (2016) The plant circadian clock: From a simple timekeeper to a complex developmental manager. *Cold Spring Harb Perspect Biol* **8**: a027748
- Santiago J, Dupeux F, Round A, Antoni R, Park SY, Jamin M, Cutler SR, Rodriguez PL, Márquez JA (2009) The abscisic acid receptor PYR1 in complex with abscisic acid. *Nature* **462**: 665–668
- Sato E, Nakamichi N, Yamashino T, Mizuno T (2002) Aberrant expression of the *Arabidopsis* circadian-regulated APRR5 gene belonging to the APRR1/TOC1 quintet results in early flowering and hypersensitivity to light in early photomorphogenesis. *Plant Cell Physiol* **43**: 1374–1385
- Seung D, Risopatron JPM, Jones BJ, Marc J (2012) Circadian clock-dependent gating in ABA signalling networks. *Protoplasma* **249**: 445–457

- Sheen J** (2001) Signal transduction in maize and *Arabidopsis* mesophyll protoplasts. *Plant Physiol* **127**: 1466–1475
- Simon NML, Graham CA, Comben NE, Hetherington AM, Dodd AN** (2020) The circadian clock influences the long-term water use efficiency of *Arabidopsis*. *Plant Physiol* **183**: 317–330
- Skubacz A, Daszkowska-Golec A, Szarejko I** (2016) The role and regulation of ABI5 (ABA-Insensitive 5) in plant development, abiotic stress responses and phytohormone crosstalk. *Front Plant Sci* **7**: 1884
- Söderman EM, Brocard IM, Lynch TJ, Finkelstein RR** (2000) Regulation and function of the *Arabidopsis* *ABA-insensitive4* gene in seed and abscisic acid response signaling networks. *Plant Physiol* **124**: 1752–1765
- Stone SL, Williams LA, Farmer LM, Vierstra RD, Callis J** (2006) KEEP ON GOING, a RING E3 ligase essential for *Arabidopsis* growth and development, is involved in abscisic acid signaling. *Plant Cell* **18**: 3415–3428
- Strayer C, Oyama T, Schultz TF, Raman R, Somers DE, Mas P, Panda S, Kreps JA, Kay SA** (2000) Cloning of the *Arabidopsis* clock gene *TOC1*, an autoregulatory response regulator homolog. *Science* **289**: 768–771
- Suzuki M, Kao CY, Cocciolone S, McCarty DR** (2001) Maize VP1 complements *Arabidopsis* *abi3* and confers a novel ABA/auxin interaction in roots. *Plant J* **28**: 409–418
- Uehara TN, Mizutani Y, Kuwata K, Hirota T, Sato A, Mizoi J, Takao S, Matsuo H, Suzuki T, Ito S, et al.** (2019) Casein kinase 1 family regulates PRR5 and TOC1 in the *Arabidopsis* circadian clock. *Proc Natl Acad Sci U S A* **116**: 11528–11536
- Wang L, Fujiwara S, Somers DE** (2010) PRR5 regulates phosphorylation, nuclear import and subnuclear localization of TOC1 in the *Arabidopsis* circadian clock. *EMBO J* **29**: 1903–1915
- Wang L, Kim J, Somers DE** (2013) Transcriptional corepressor TOPLESS complexes with pseudoresponse regulator proteins and histone deacetylases to regulate circadian transcription. *Proc Natl Acad Sci U S A* **110**: 761–766
- Wang ZY, Tobin EM** (1998) Constitutive expression of the *CIRCADIAN CLOCK ASSOCIATED1* (*CCA1*) gene disrupts circadian rhythms and suppresses its own expression. *Cell* **93**: 1207–1217
- Webb AA, Seki M, Satake A, Caldana C** (2019) Continuous dynamic adjustment of the plant circadian oscillator. *Nat Commun* **10**: 550
- Yamamoto Y, Sato E, Shimizu T, Nakamich N, Sato S, Kato T, Tabata S, Nagatani A, Yamashino T, Mizuno T** (2003) Comparative genetic studies on the APRR5 and APRR7 genes belonging to the APRR1/TOC1 quintet implicated in circadian rhythm, control of flowering time, and early photomorphogenesis. *Plant Cell Physiol* **44**: 1119–1130
- Yang X, Bai Y, Shang J, Xin R, Tang W** (2016) The antagonistic regulation of abscisic acid-inhibited root growth by brassinosteroids is partially mediated via direct suppression of ABSCISIC ACID INSENSITIVE 5 expression by BRASSINAZOLE RESISTANT 1. *Plant Cell Environ* **39**: 1994–2003
- Yoo SD, Cho YH, Sheen J** (2007) *Arabidopsis* mesophyll protoplasts: a versatile cell system for transient gene expression analysis. *Nature Protoc* **2**: 1565–1572
- Yu F, Wu Y, Xie Q** (2015) Precise protein post-translational modifications modulate ABI5 activity. *Trends Plant Sci* **20**: 569–575
- Yuan L, Yu Y, Liu M, Song Y, Li H, Sun J, Wang Q, Xie Q, Wang L, Xu X** (2021) BBX19 fine-tunes the circadian rhythm by interacting with PSEUDO-RESPONSE REGULATOR proteins to facilitate their repressive effect on morning-phased clock genes. *Plant Cell* **33**: 2602–2617
- Zhang P, Wang R, Ju Q, Li W, Tran LS, Xu J** (2019) The R2R3-MYB transcription factor MYB49 regulates cadmium accumulation. *Plant Physiol* **180**: 529–542
- Zhao C, Zhang H, Song C, Zhu JK, Shabala S** (2020) Mechanisms of plant responses and adaptation to soil salinity. *Innovation* **1**: 100017
- Zhao X, Dou L, Gong Z, Wang X, Mao T** (2019) BES1 hinders ABSCISIC ACID INSENSITIVE5 and promotes seed germination in *Arabidopsis*. *New Phytol* **221**: 908–918
- Zhong HH, Painter JE, Salomé PA, Straume M, McClung CR** (1998) Imbibition, but not release from stratification, sets the circadian clock in *Arabidopsis* seedlings. *Plant Cell* **10**: 2005–2017
- Zhou X, Hao H, Zhang Y, Bai Y, Zhu W, Qin Y, Yuan F, Zhao F, Wang M, Hu J, et al.** (2015) SOS2-LIKE PROTEIN KINASE5, an SNF1-RELATED PROTEIN KINASE3-Type Protein Kinase, is important for abscisic acid responses in *Arabidopsis* through phosphorylation of ABSCISIC ACID-INSENSITIVE5. *Plant Physiol* **168**: 659–676