












ORIGINAL RESEARCH

# Vitamin K Intake and Atherosclerotic Cardiovascular Disease in the Danish Diet Cancer and Health Study

Jamie W. Bellinge , MBBS; Frederik Dalgaard , MD, PhD; Kevin Murray , PhD; Emma Connolly, BNutrDiet (Hons); Lauren C. Blekkenhorst , PhD; Catherine P. Bondonno , PhD; Joshua R. Lewis , PhD; Marc Sim , PhD; Kevin D. Croft, PhD; Gunnar Gislason , MD, PhD; Christian Torp-Pedersen, MD, DMSc; Anne Tjønneland, MD, PhD; Kim Overvad, MD, PhD; Jonathan M. Hodgson , PhD; Carl Schultz , MBChB, PhD; Nicola P. Bondonno , PhD

**BACKGROUND:** Dietary vitamin K ( $K_1$  and  $K_2$ ) may reduce atherosclerotic cardiovascular disease (ASCVD) risk via several mechanisms. However, studies linking vitamin K intake with incident ASCVD are limited. We aimed to determine the relationship between dietary vitamin K intake and ASCVD hospitalizations.

**METHODS AND RESULTS:** In this prospective cohort study, participants from the Danish Diet, Cancer, and Health Study, with no prior ASCVD, completed a food-frequency questionnaire at baseline and were followed up for hospital admissions of ASCVD; ischemic heart disease, ischemic stroke, or peripheral artery disease. Intakes of vitamin  $K_1$  and vitamin  $K_2$  were estimated from the food-frequency questionnaire, and their relationship with ASCVD hospitalizations was determined using Cox proportional hazards models. Among 53 372 Danish citizens with a median (interquartile range) age of 56 (52–60) years, 8726 individuals were hospitalized for any ASCVD during 21 (17–22) years of follow-up. Compared with participants with the lowest vitamin  $K_1$  intakes, participants with the highest intakes had a 21% lower risk of an ASCVD-related hospitalization (hazard ratio, 0.79; 95% CI: 0.74–0.84), after multivariable adjustments for relevant demographic covariates. Likewise for vitamin  $K_2$ , the risk of an ASCVD-related hospitalization for participants with the highest intakes was 14% lower than participants with the lowest vitamin  $K_2$  intake (hazard ratio, 0.86; 95% CI, 0.81–0.91).

**CONCLUSIONS:** Risk of ASCVD was inversely associated with diets high in vitamin  $K_1$  or  $K_2$ . The similar inverse associations with both vitamin  $K_1$  and  $K_2$ , despite very different dietary sources, highlight the potential importance of vitamin K for ASCVD prevention.

**Key Words:** atherosclerotic cardiovascular disease ■ dietary vitamin K ■ phyloquinone ■ menaquinone ■ primary prevention ■ prospective cohort study

**A**therosclerotic cardiovascular disease (ASCVD) remains a leading cause of death worldwide despite the availability of risk-modifying therapies and lifestyle advice.<sup>1</sup> The pathogenesis of ASCVD is multifactorial and is, in part, influenced by inflammation,<sup>2</sup> impaired hemostasis,<sup>3</sup> metabolic syndrome (including dysglycemia, dyslipidemia, and obesity),<sup>4</sup> and

arterial calcification.<sup>5</sup> These mechanisms are possible targets for dietary and pharmaceutical interventions aimed at reducing ASCVD risk.

Vitamin K occurs in 2 forms: Vitamin  $K_1$  (phyloquinone) is found in all photosynthetic plants, with green leafy vegetables being the primary dietary source, while vitamin  $K_2$  (menaquinones K4-K10) is primarily

Correspondence to: Nicola P. Bondonno, PhD, Level 3, Medical Research Foundation, Rear 50 Murray St, Perth, Western Australia 6000, Australia. E-mail: n.bondonno@ecu.edu.au

J. W. Bellinge and F. Dalgaard contributed equally to this work.

Supplementary Material for this article is available at <https://www.ahajournals.org/doi/suppl/10.1161/JAHA.120.020551>

For Sources of Funding and Disclosures, see page 11.

© 2021 The Authors. Published on behalf of the American Heart Association, Inc., by Wiley. This is an open access article under the terms of the Creative Commons Attribution-NonCommercial-NoDerivs License, which permits use and distribution in any medium, provided the original work is properly cited, the use is non-commercial and no modifications or adaptations are made.

JAHA is available at: [www.ahajournals.org/journal/jaha](http://www.ahajournals.org/journal/jaha)

## CLINICAL PERSPECTIVE

### What Is New?

- Dietary vitamin K<sub>1</sub> and vitamin K<sub>2</sub> intake is non-linearly inversely associated with risk of atherosclerotic cardiovascular disease events.
- This relationship is true for all subtypes of atherosclerotic cardiovascular disease, ischemic heart disease, ischemic stroke, and peripheral artery disease.

### What Are the Clinical Implications?

- Dietary vitamin K intake may be considered in evaluating risk of atherosclerotic cardiovascular disease.
- Sufficient vitamin K intake may be protective of atherosclerotic cardiovascular disease events.
- Further research is needed to determine at-risk individuals who may benefit from increased dietary vitamin K intake or vitamin K supplementation.

## Nonstandard Abbreviations and Acronyms

<b>DNPR</b>	Danish National Patient Register
<b>FFQ</b>	food-frequency questionnaire
<b>IHD</b>	ischemic heart disease
<b>VKA</b>	vitamin K antagonist

bacterially derived and is found predominantly in fermented foods, such as cheese.<sup>6</sup> Both forms of vitamin K have been proposed to influence cardiovascular health through many mechanisms,<sup>7</sup> including the reduction of systemic inflammation,<sup>8</sup> maintenance of hemostasis,<sup>9</sup> and the inhibition of arterial calcification.<sup>10</sup>

Observational studies have demonstrated an inverse relationship between biomarkers of dietary vitamin K intake and ASCVD risk,<sup>11–14</sup> and supplementing with vitamin K increases circulating concentrations of these biomarkers<sup>15,16</sup> in a dose-dependent fashion.<sup>17</sup> These observations and others<sup>18</sup> suggest a causal role of vitamin K in the prevention of ASCVD. However, observational studies linking dietary vitamin K<sub>1</sub> intake with ASCVD risk in US men and women have been inconclusive,<sup>19,20</sup> and observed inverse relationships are often attributed to the underlying cardioprotective dietary patterns associated with high vitamin K<sub>1</sub> intake (eg, higher vegetable intake). In Dutch cohorts, high dietary vitamin K<sub>2</sub> intake is associated with lower ASCVD risk<sup>21,22</sup>; this finding requires validation in other populations. Two recent meta-analyses have described an increased risk of all-cause mortality<sup>14</sup> and coronary

heart disease<sup>18</sup> with vitamin K deficiency as defined by serum biomarkers or dietary intake, respectively. Further research is needed to validate these observations and better understand the effect of vitamin K deficiency on specific ASCVD subtypes.

We aimed to investigate whether dietary intakes of vitamin K<sub>1</sub> and vitamin K<sub>2</sub> were associated with total ASCVD hospitalizations and hospitalizations for subtypes of ASCVD, namely, ischemic heart disease (IHD), ischemic stroke, and peripheral artery disease (PAD), in Danish individuals free of ASCVD at baseline.

## METHODS

Because of the sensitive nature of the data collected for this study, requests to access the data set from qualified researchers trained in human subject confidentiality may be sent to the Diet, Cancer, and Health Steering Committee at the Danish Cancer Society.

### Study Population

Between 1993 and 1997, the Danish Diet, Cancer, and Health Study, an associated cohort of the European Prospective Investigation Into Nutrition and Cancer (EPIC),<sup>23</sup> recruited 57 053 residents of the greater areas of Copenhagen and Aarhus, between the ages of 50 and 65 years. Of these, 56 468 completed a food-frequency questionnaire (FFQ) and had no prevalent cancer at the time of recruitment. Using the Danish civil registration system, which assigns a unique and permanent number for all Danish residents, participants were able to be linked to the following registries on an individual level: (1) the Civil Registration System,<sup>24</sup> containing data on age, sex, emigration, and vital status; (2) the Integrated Database for Labour Market Research,<sup>25</sup> containing information on annual income since 1980; (3) the Danish National Prescription Registry, containing information on all filled prescriptions since 1994<sup>26</sup>; and (4) the Danish National Patient Register (DNPR)<sup>27</sup> containing information on date of hospital admissions since 1978, with 1 primary diagnosis and ≥1 secondary diagnoses defined by the *International Classification of Diseases (ICD)* using the *Eighth Revision (ICD-8)* until 1993 and the *Tenth Revision (ICD-10)* from 1994. In the DNPR, procedures and surgeries have been recorded since 1996 using Nordic Classification of Surgical Procedures codes.

All participants provided informed consent as part of the Danish Diet, Cancer, and Health Study to search information from medical registers.<sup>23</sup> In the Danish Diet, Cancer, and Health Study, the procedures followed were in accordance with the ethical standards of the responsible institutional or regional committee on human experimentation. In Denmark, register studies do not require approval from the ethics committees.

This study was approved by the Danish Data Protection Agency (Reference no. 2012-58-0004 I-Suite nr: 6357, VD-2018-117).

In the present study, the main exclusion criteria included prevalent ASCVD (n=2484), use of a vitamin K antagonist (VKA; n=220), missing or implausible values for covariates (n=196), or implausible energy intakes (n=196) (Figure 1). Prevalent ASCVD was defined by self-reported myocardial infarction (n=223), prior diagnosis of IHD (*ICD-8*: 410–412, 414; *ICD-10*: I21–I25; n=1303), self-reported ischemic stroke (n=422), prior diagnosis of ischemic stroke (*ICD-8*: 433–434; *ICD-10*: I63; n=199), or prior diagnosis of PAD (*ICD-8*: 440–444; *ICD-10*: I70–I74; n=337) at baseline (1993–1997). Implausible energy intakes were defined as <2092 kJ/d (<500 kcal/d) and >20 920 kJ/d (>5000 kcal/d) and VKAs are defined using Anatomical Therapeutic Chemical code B01AA.

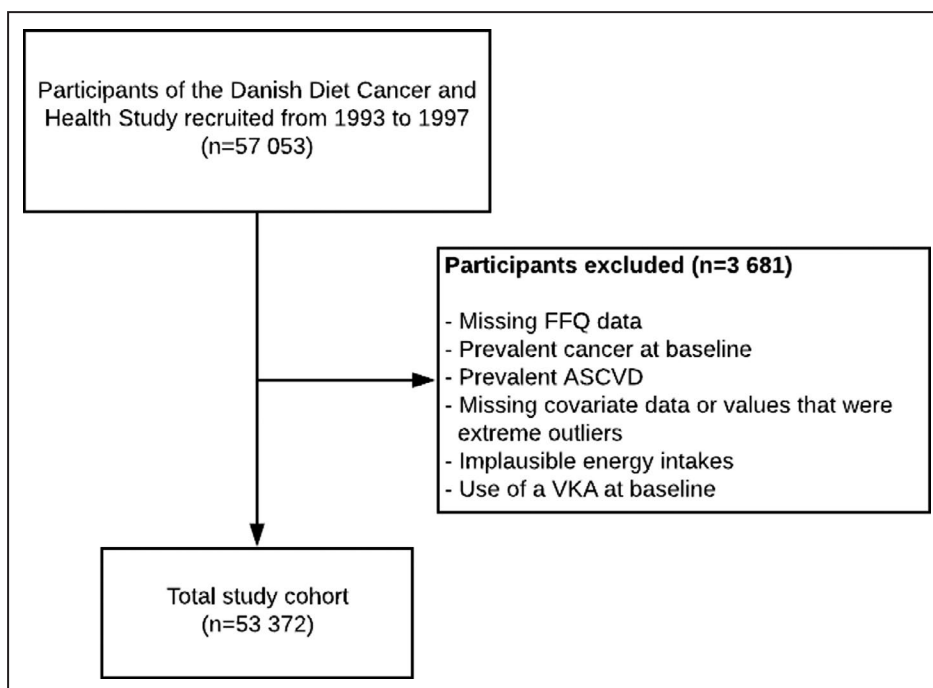
### Exposures

Exposures were intakes of vitamin K<sub>1</sub> and vitamin K<sub>2</sub> (menaquinones K-4 to K-10). These were estimated from dietary data, collected using a validated 192-item self-administered, semiquantitative FFQ mailed out to participants before their visit to 1 of the 2 study centers.<sup>28,29</sup> The FFQ was validated against 2 times 7 days of weighed diet records<sup>29</sup> where correlations between mean calorie-adjusted intakes from the weighed diet records and the FFQ were calculated for macro- and micronutrients. On average, 70% of the subjects were

classified in the same (±1) quintile for macro- and micronutrient intakes when comparing the 2 different methods of capturing diet. On the FFQ, participants were asked to indicate their usual frequency of intake for different food and beverage items over the previous 12 months, using a 12-category frequency scale that ranged from never to ≥8 times per day.<sup>22</sup> Estimates of the vitamin K<sub>1</sub> content of each food and beverage in the FFQ were derived from the Frida Food Data database<sup>30</sup> and, where a vitamin K<sub>1</sub> value was not available, the US Department of Agriculture<sup>31</sup> nutrient database. Estimates of the vitamin K<sub>2</sub> content of each food and beverage in the FFQ were derived from Schurgers et al (menaquinones K-4 to K-9<sup>32</sup>), and Manoury et al (menaquinone K-10<sup>33</sup>), with total vitamin K<sub>2</sub> intake calculated by summing each of the individual menaquinones, as done previously.<sup>34</sup> Total dietary vitamin K intake was estimated by multiplying the food/beverage item consumed (g/d) by the mean vitamin K value (µg/g). A value of 0 µg/g was given to all foods and beverages where no value was available (vitamin K<sub>1</sub>, n=44; menaquinones K-4 to K-9, n=78; menaquinone K-10, n=160). Information on the exact values used and assumptions made will be provided upon reasonable request to the corresponding author.

### Study Outcomes

The primary outcome was a combined end point of first-time ASCVD hospitalization, defined as hospitalization for IHD, ischemic stroke, or PAD. Secondary



**Figure 1. Consolidated Standards of Reporting Trials flow diagram.**

ASCVD indicates atherosclerotic cardiovascular disease; FFQ, food-frequency questionnaire; and VKA, vitamin K antagonist.

outcomes were a first-time hospitalization for IHD, ischemic stroke hospitalizations, and PAD hospitalizations, individually. Reasons for hospitalization were determined using ICD-10 codes for primary or secondary diagnoses (IHD, *ICD-10*: I21–I25; ischemic stroke, *ICD-10*: I63; PAD, *ICD-10*: I70–I74]. These *ICD* codes have previously been validated to varying degrees in the DNPR<sup>35–38</sup> and have positive predictive values of ~92% to 97% for IHD,<sup>34</sup> ~81% to 85% for ischemic stroke,<sup>35</sup> and ~81% for PAD.<sup>36</sup> Percutaneous coronary interventions (PCI; Nordic Classification of Surgical Procedures codes KFNG00, FNG02, FNG05, FNG10, FNG12, and FNG96) and coronary artery bypass grafting (CABG; Nordic Classification of Surgical Procedures codes KFNA, KFNB, KFNC, KFND, KFNE, and KFNH20) were investigated using a landmark analysis; as the procedure codes of coronary interventions were not recorded before 1996, PCI and CABG were not included within the primary outcome. In this landmark analysis, participants who died, had an ASCVD event, or were prescribed a VKA before this date (January 1, 1996) were excluded ( $n=177$  excluded;  $n=53\ 195$  remaining in analysis). Diagnoses of unstable angina or transient ischemic attack were not included as outcomes as they lack validity in the DNPR.

### Validated Case Analysis

To strengthen our findings, we reexamined associations using only medically reviewed and validated cases of ASCVD to verify registry-based outcomes. Patients with an *ICD-10* discharge code for ischemic stroke or PAD up until 2009, or myocardial infarction up until 2013, registered as a primary or secondary diagnosis, were considered as possible cases to be reviewed (Table S1). Methods of case validation have been published previously.<sup>35–39</sup> Due to a prior diagnosis of validated ASCVD, a further 6 participants were excluded in this analysis ( $n=53\ 366$ ).

### Covariates

Information on sex, age, education, smoking habits, alcohol consumption, and daily activity was obtained from self-administered questionnaires completed by participants upon enrollment in the study. Dietary data were obtained from the semiquantitative FFQ described above. Annual income, averaged over the 5 years immediately preceding study enrollment, was used as a proxy for socioeconomic status and was defined as household income after taxation and interest, for the value of the Danish currency in 2015. *ICD-8* and *ICD-10* codes were used for diagnosis of chronic kidney disease (*ICD-8*: 580–584; *ICD-10*: N02–N08, N11–N12, N14, N18–N19, N26, N158–N160, N162–N164, N168, Q61, E102, E112, E132, E142, I120, M321B), chronic obstructive pulmonary disease (*ICD-8*: 491–493; *ICD-10*:

J42–J44), heart failure (*ICD-8*: 4270–4271; *ICD-10*: I42, I50, I110, J81), atrial fibrillation (*ICD-8*: 42793–42794; *ICD-10*: I48), and cancers (*ICD-8*: 140–209; *ICD-10*: C00–C99). For diabetes mellitus, only self-reported data were used because of the low validity of *ICD* codes in DNPR.<sup>39</sup> Information regarding use of antihypertensive medication and statins at study enrollment was obtained from a combination of self-reported use and Anatomical Therapeutic Chemical codes in the Danish National Prescription Registry: prescriptions of statins (Anatomical Therapeutic Chemical code C10AA), or antihypertensive medication (Anatomical Therapeutic Chemical codes described in Table S2), claimed within 180 days before enrollment in the study, were identified from 1994. Presence of hypertension at baseline was defined as either self-reported hypertension or a claimed prescription of  $\geq 2$  antihypertensive medications within 180 days before study enrollment, which has a positive predictive value of 80.0% and a specificity of 94.7% to predict hypertension.<sup>40</sup> Presence of hypercholesterolemia was defined using self-reported data, and anthropometric measurements were taken and total blood cholesterol was measured at the study centers.

### Statistical Analysis

Participants' time to event was based on a maximum of 23 years of follow-up from the date of enrollment until the date of death, emigration, ASCVD hospitalization (first hospitalization for the combined end point), or end of follow-up (August 2017), whichever came first. Cox proportional hazards models with restricted cubic splines were used to investigate nonlinear relationships between vitamin K intakes and all time-to-event outcomes. All hazard ratios (HRs) and 95% CIs were obtained from the model with the exposure fitted as a continuous variable through a restricted cubic spline (4 knots); HR estimates are reported for the median intake in each quintile, with the first quintile median as the reference point, and are also graphed over a fine grid of  $x$  values. For visual simplicity, the graphs of HRs derived from the fitting of cubic splines had  $x$ -axis values restricted to intakes within 3 SDs of the mean. Cox proportional hazards assumptions were tested using log-log plots of the survival function versus time and assessed for parallel appearance, with no violation found. We tested for nonlinearity using a chi-squared test to compare nested models. The relationship between ASCVD and all continuous covariates, except vitamin K, was assessed for linearity, and in the case of violation, covariates were transformed to be categorical. As our aim was to obtain relative estimates for risk factors, all deaths were censored rather than treated as a competing risk.<sup>41</sup> Five models of adjustment were used: Model 1a (minimally adjusted) included age and

sex; model 1b (multivariable-adjusted) included age, sex, body mass index, smoking status, physical activity, alcohol intake, socioeconomic status (income), and education; model 2 (covariates that are both potential confounders and potential intermediates on the causal pathway) included all covariates in model 1b plus hypertension, hypercholesterolemia, and prevalent disease (diabetes mellitus, chronic obstructive pulmonary disease, chronic kidney disease, and cancer; entered into the model separately); model 3a (multivariable-adjusted including potential dietary confounders) included all covariates in model 1b plus energy and intakes of fish, red meat, processed food, polyunsaturated fatty acids, monounsaturated fatty acids, and saturated fatty acids; model 3b adjusted for all covariates in model 3a plus vitamin K<sub>1</sub> or vitamin K<sub>2</sub>, as appropriate. Covariates were chosen a priori using knowledge of potential confounders of vitamin K intake and ASCVD. We tested for interactions between vitamin K intake (quintiles) and sex using chi-squared tests to compare nested models. To understand whether an association between vitamin K<sub>1</sub> and ASCVD is independent of total vegetable intake, we stratified our analysis by tertiles of total vegetable intake. To assess the likelihood of residual confounding, we used a falsification end point that we considered likely to be affected by diet but unlikely to be causally affected by vitamin K intake: colorectal cancer (*ICD-10*: C18–C21; *ICD-8*: 153–154). We performed 2 sensitivity analyses. In the first sensitivity analysis, participants were censored if prescribed a VKA during follow-up, as these may affect the potential relationship between vitamin K intake and ASCVD, and such prescriptions may have been accompanied by recommendations for dietary change. In a second sensitivity analysis, with PCI and CABG as a combined outcome, a landmark analysis was performed with the landmark date of January 1, 1996. Analyses were undertaken using STATA/IC 14.2 (StataCorp LLC) and R statistics (R Core Team, 2019).

## RESULTS

This population of 53 372 Danish citizens, with a median (interquartile range) age of 56 (52–60) years at entry, had a median (interquartile range) follow-up of 21 (17–22) years. During 944 247 person-years of follow-up, 8726 individuals were hospitalized for ASCVD, 5290 for IHD, 2913 for ischemic stroke, and 1856 for PAD. Furthermore, 9476 participants died without a prior hospitalization for ASCVD and <0.3% of participants were lost to follow-up.

### Baseline Characteristics

At baseline, the median (interquartile range) intake of vitamin K<sub>1</sub> was 113.8 µg/d (80.7–151.2) and vitamin K<sub>2</sub>

was 43.7 µg/day (31.1–61.5); intakes of the 2 forms of vitamin K were weakly correlated (Spearman's rho=0.25). Compared with participants in the lowest quintile of vitamin K<sub>1</sub> intake, those in the highest quintile were more likely to be more physically active, have never smoked, have a higher degree of education, have a higher income, have a higher total energy intake, and have an overall healthier underlying dietary pattern, eating more fish, fiber, vegetables, and fruit (Table 1). For vitamin K<sub>2</sub> intake, compared with participants in the lowest-intake quintile, those in the highest-intake quintile were more likely to be men, be more physically active, smoke, have a higher total energy intake, and have an overall unhealthier underlying dietary pattern, eating more red meat, processed meat, and saturated fat (Table 1). The main dietary sources of vitamin K<sub>1</sub> were margarine, lettuce, broccoli, whole-meal bread, and spinach, while eggs, butter, and hard cheeses were the main dietary sources of vitamin K<sub>2</sub> (Table S3).

### Associations Between Vitamin K<sub>1</sub> Intake and ASCVD Hospitalizations

The association between vitamin K<sub>1</sub> intake and incident ASCVD was nonlinear (*P* for nonlinearity <0.001); the steepness of the inverse association started to decrease at ≈100 µg/d (Figure 2). Compared with participants in quintile 1, participants in quintile 5 had a 21% lower risk of an ASCVD-related hospitalization (HR, 0.79; 95% CI, 0.74–0.84) after multivariable adjustments (Model 1b; Table 2). For ASCVD subtypes, participants in quintile 5 had a 14% lower risk of a hospitalization for IHD (HR, 0.86; 95% CI, 0.80–0.93), a 17% lower risk of hospitalization for an ischemic stroke (HR, 0.83; 95% CI, 0.75–0.91), and a 34% lower risk of a PAD-related hospitalization (HR, 0.66; 95% CI, 0.58–0.75), after multivariable adjustments (model 1b) and compared with participants in quintile 1. A clear association between vitamin K<sub>1</sub> intake and ASCVD remained after adjusting for potential dietary confounders (model 3a), including vitamin K<sub>2</sub> intake (model 3b). The association between vitamin K<sub>1</sub> and ASCVD was not modified by sex (*P* for interaction=0.533).

### Associations Between Vitamin K<sub>2</sub> Intake and ASCVD Hospitalizations

The association between total vitamin K<sub>2</sub> intake and incident ASCVD hospitalizations was also nonlinear (*P* for nonlinearity <0.001; Figure 3). After multivariable adjustments (model 1b) and compared with participants in quintile 1, participants in quintile 5 had a 14% lower risk of ASCVD (HR, 0.86; 95% CI, 0.81–0.91) and, more specifically, a 14% lower risk of a hospitalization for IHD (HR, 0.86; 95% CI, 0.80–0.92), a 13% lower risk of a stroke hospitalization (HR, 0.87; 95% CI, 0.79–0.95), and a 12% lower risk of a PAD-related hospitalization

**Table 1. Baseline Characteristics of Study Population**

	Total Population N=53 372	Total Vitamin K <sub>1</sub> Intake Quintiles		Total Vitamin K <sub>2</sub> Intake Quintiles	
		Quintile 1 n=10 675	Quintile 5 n=10 675	Quintile 1 n=10 675	Quintile 5 n=10 675
Total vitamin K <sub>1</sub> intake, µg/d	113.8 [80.7–151.2]	57 [4–73]	192 [162–800]	...	...
Total vitamin K <sub>2</sub> intake, µg/d	43.7 [31.1–61.5]	...	...	23 [0–29]	77 [65–296]
Sex, male	24 826 (46.5)	4845 (45.4)	5022 (47.0)	4033 (37.8)	5725 (53.6)
Age, y	56 [52–60]	56 [52–60]	55 [52–60]	56 [52–60]	55 [52–60]
BMI, kg/m <sup>2</sup>	26 [23–28]	26 [24–29]	25 [23–27]	25 [23–28]	26 [23–28]
MET score	56 [37–84]	50 [32–77]	64 [42–92]	52 [34–78]	61 [40–91]
Smoking status					
Never	19 195 (36.0)	2995 (28.1)	4242 (39.7)	4088 (38.3)	3624 (33.9)
Former	15 140 (28.4)	2471 (23.1)	3484 (32.6)	2835 (26.6)	3173 (29.7)
Current	19 037 (35.7)	5209 (48.8)	2949 (27.6)	3752 (35.1)	3878 (36.3)
Education					
≤7 y	17 225 (32.3)	4709 (44.1)	2294 (21.5)	3512 (32.9)	3516 (32.9)
8–10 y	24 767 (46.4)	4779 (44.8)	4754 (44.5)	5117 (47.9)	4651 (43.6)
≥11 y	11 357 (21.3)	1182 (11.1)	3622 (33.9)	2040 (19.1)	2503 (23.4)
Mean household income					
≤394 700 DKK/y	13 010 (24.4)	3468 (32.5)	2305 (21.6)	2816 (26.4)	2807 (26.3)
394 701–570 930 DKK/y	13 255 (24.8)	3016 (28.3)	2272 (21.3)	2602 (24.4)	2722 (25.5)
570 931–758 297 DKK/y	13 441 (25.2)	2500 (23.4)	2408 (22.6)	2525 (23.7)	2685 (25.2)
>758 297 DKK/y	13 666 (25.6)	1691 (15.8)	3690 (34.6)	2732 (25.6)	2461 (23.1)
Hypertensive	8288 (15.5)	1741 (16.3)	1529 (14.3)	1793 (16.8)	1543 (14.5)
Hypercholesterolemic	3373 (6.3)	681 (6.4)	618 (5.8)	943 (8.8)	507 (4.7)
Comorbidities					
Diabetes mellitus	992 (1.9)	158 (1.5)	309 (2.9)	159 (1.5)	319 (3.0)
Heart failure	78 (0.1)	23 (0.2)	12 (0.1)	18 (0.2)	15 (0.1)
Atrial fibrillation	165 (0.3)	43 (0.4)	28 (0.3)	36 (0.3)	31 (0.3)
COPD	744 (1.4)	208 (1.9)	135 (1.3)	150 (1.4)	155 (1.5)
CKD	176 (0.3)	30 (0.3)	26 (0.2)	32 (0.3)	39 (0.4)
Cancer	224 (0.4)	51 (0.5)	35 (0.3)	49 (0.5)	47 (0.4)
Medication use					
Insulin treated	330 (0.6)	43 (0.4)	129 (1.2)	44 (0.4)	123 (1.2)
Antihypertensive	6079 (11.4)	1290 (12.1)	1107 (10.4)	1295 (12.1)	1105 (10.4)
Statin	621 (1.2)	126 (1.2)	122 (1.1)	202 (1.9)	76 (0.7)
HRT, % of women					
Never	15 524 (54.4)	3144 (53.9)	3038 (53.7)	3612 (54.4)	2740 (55.4)
Current	8594 (30.2)	1702 (29.2)	1747 (30.9)	1992 (30.0)	1466 (29.6)
Former	4397 (15.4)	973 (16.7)	865 (15.3)	1030 (15.5)	739 (14.9)
NSAID	17 045 (32.1)	3377 (31.9)	3404 (32.0)	3386 (31.9)	3478 (32.8)
Aspirin	6468 (12.1)	1378 (12.9)	1242 (11.6)	1274 (11.9)	1402 (13.1)
Dietary characteristics					
Energy, kJ	9493 [7849–11 362]	7879 [6552–9457]	11 105 [9440–13040]	7670 [6408–9119]	11 561 [9850–13 492]
Total fish intake, g/d	38 [25–55]	28 [18–41]	49 [33–68]	31 [20–44]	44 [29–64]
Red meat intake, g/d	78 [56–107]	69 [51–93]	83 [58–117]	64 [46–87]	91 [66–124]
Processed meat intake, g/d	24 [14–40]	24 [14–40]	23 [12–39]	18 [10–29]	31 [18–50]
Dietary fiber intake, g/d	20 [16–25]	14 [12–17]	27 [23–32]	17 [13–22]	24 [20–29]
Saturated FA, g/d	31 [24–39]	27 [21–35]	35 [27–44]	22 [17–28]	42 [35–51]

(Continued)

**Table 1. Continued**

	Total Population N=53 372	Total Vitamin K <sub>1</sub> Intake Quintiles		Total Vitamin K <sub>2</sub> Intake Quintiles	
		Quintile 1 n=10 675	Quintile 5 n=10 675	Quintile 1 n=10 675	Quintile 5 n=10 675
Polyunsaturated FA, g/d	13 [10–17]	10 [8–12]	17 [13–22]	10 [8–13]	16 [13–21]
Monounsaturated FA, g/d	27 [21–35]	23 [18–30]	31 [24–39]	20 [16–25]	35 [28–43]
Fruit intake, g/d	172 [95–282]	104 [47–183]	251 [156–386]	149 [76–257]	193 [114–319]
Vegetable intake, g/d	162 [105–231]	73 [52–100]	287 [231–354]	133 [81–199]	191 [129–266]
Alcohol intake, g/d	13 [6–31]	12 [4–32]	13 [6–30]	11 [4–27]	13 [6–31]

Data expressed as median [IQR] or n (%), unless otherwise stated.

BMI indicates body mass index; CKD, chronic kidney disease; COPD, chronic obstructive pulmonary disease; DKK, Danish Krone; FA, fatty acid; HRT, hormone replacement therapy; MET, metabolic equivalent; and NSAID, nonsteroidal anti-inflammatory drug.

HR, 0.88; 95% CI, 0.78–0.99). An association between vitamin K<sub>2</sub> intake and ASCVD remained after adjusting for potential dietary confounders (model 3a), including vitamin K<sub>1</sub> intake (model 3b). The association between vitamin K<sub>2</sub> and ASCVD was not modified by sex (*P* for interaction=0.593).

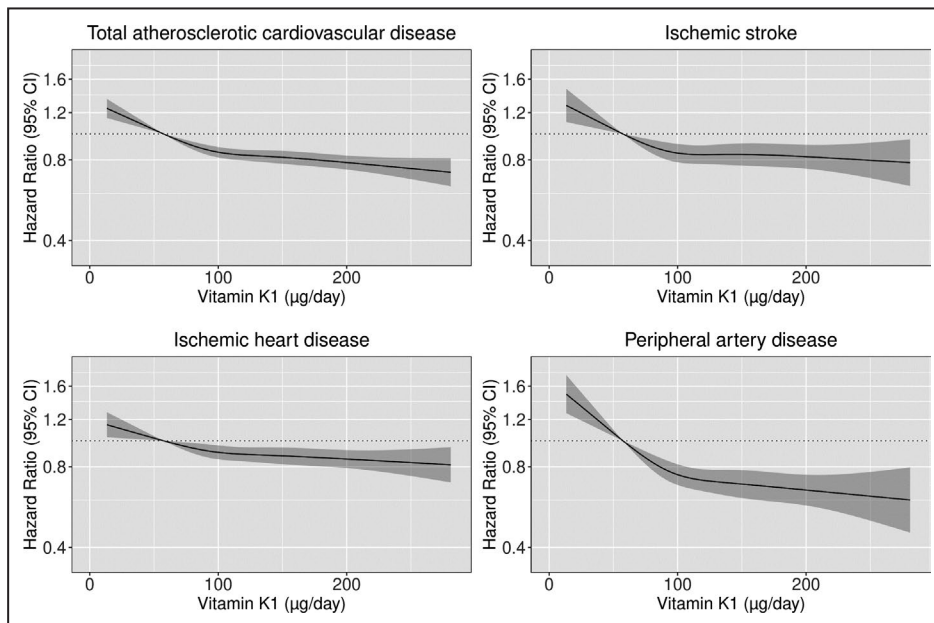
**Stratified Analyses**

To try to understand whether vitamin K<sub>1</sub> intake is only a marker of higher vegetable intake (Spearman’s rho for correlation between vitamin K<sub>1</sub> intake and total vegetable intake=0.82), we stratified our analysis by tertiles of total vegetable intake. Compared with those with a low

vitamin K<sub>1</sub> intake 1 (quintile 1), those with a high vitamin K<sub>1</sub> intake had a lower risk of ASCVD hospitalizations across each tertile of total vegetable intake; lowest tertile HR quintile 5 vs quintile 1, 0.74; 95% CI, 0.55–0.99], middle tertile (HR quintile 5 vs quintile 1, 0.61 (95% CI, 0.50–0.75]) and highest tertile (HR quintile 5 vs quintile 1, 0.73; 95% CI, 0.58–0.93) (Table S4).

**Validated Case Analysis**

Using only validated cases, 3463 participants were hospitalized for any ASCVD, 2488 were hospitalized for an myocardial infarction, 920 for an ischemic stroke, and 816 for PAD. For vitamin K<sub>1</sub> intake, compared with



**Figure 2. Hazard ratios from Cox proportional hazards model with restricted cubic spline curves describing the association between vitamin K<sub>1</sub> intake (µg/d) and both total atherosclerotic cardiovascular disease (ASCVD) hospitalizations and subtypes of ASCVD hospitalizations (ischemic heart disease, peripheral artery disease, and ischemic stroke).** Hazard ratios are based on models adjusted for age, sex, body mass index, smoking status, social economic status (income), physical activity, alcohol intake, and education (model 1b), and are comparing the specific level of vitamin K<sub>1</sub> intake (horizontal axis) to the median intake for participants in the lowest-intake quintile (57 µg/d).

**Table 2. Hazard Ratios of Cardiovascular Disease Hospitalizations by Quintiles of Vitamin K Intake**

	Vitamin K Intake Quintiles				
	Quintile 1 n=10 675	Quintile 2 n=10 674	Quintile 3 n=10 675	Quintile 4 n=10 674	Quintile 5 n=10 674
Vitamin K <sub>1</sub>					
No. events	2142	1863	1689	1526	1506
Intake (µg/d)*	57 [4–73]	88 [73–101]	113.8 [101–127]	142 [127–162]	192 [162–800]
HR (95% CI)					
Model 1a	ref.	0.81 (0.78–0.84)	0.73 (0.69–0.76)	0.68 (0.65–0.72)	0.63 (0.60–0.67)
Model 1b	ref.	0.88 (0.85–0.92)	0.84 (0.80–0.88)	0.82 (0.78–0.87)	0.79 (0.74–0.84)
Model 2	ref.	0.88 (0.85–0.92)	0.84 (0.80–0.88)	0.82 (0.77–0.86)	0.78 (0.73–0.82)
Model 3a	ref.	0.89 (0.85–0.93)	0.85 (0.81–0.90)	0.85 (0.79–0.91)	0.83 (0.76–0.91)
Model 3b	ref.	0.89 (0.85–0.93)	0.86 (0.81–0.90)	0.85 (0.79–0.91)	0.83 (0.76–0.91)
Vitamin K <sub>2</sub>					
No. events	1774	1746	1831	1616	1759
Intake, µg/d*	23 [0–29]	33 [29–38]	44 [38–51]	58 [51–65]	77 [65–296]
HR (95% CI)					
Model 1a	ref.	0.98 (0.94–1.02)	0.93 (0.88–0.97)	0.86 (0.82–0.91)	0.87 (0.83–0.92)
Model 1b	ref.	0.98 (0.94–1.02)	0.93 (0.89–0.98)	0.86 (0.82–0.91)	0.86 (0.81–0.91)
Model 2	ref.	0.99 (0.96–1.03)	0.95 (0.90–0.99)	0.88 (0.83–0.93)	0.87 (0.82–0.92)
Model 3a	ref.	0.98 (0.94–1.02)	0.94 (0.89–0.99)	0.89 (0.84–0.95)	0.90 (0.84–0.97)
Model 3b	ref.	0.98 (0.95–1.03)	0.95 (0.90–1.00)	0.89 (0.84–0.95)	0.91 (0.84–0.97)

Hazard ratios (95% CI) for atherosclerotic cardiovascular disease hospitalizations during 23 years of follow-up, obtained from restricted cubic splines based on Cox proportional hazards models, comparing the median intake in quintiles 2–5, to the median intake in quintile 1. Model 1a adjusted for age and sex; model 1b adjusted for age, sex, body mass index, smoking status, physical activity, alcohol intake, social economic status (income), and education; model 2 adjusted for all covariates in model 1b plus hypertension, hypercholesterolemia, and prevalent disease (diabetes mellitus, chronic obstructive pulmonary disease, chronic kidney disease, and cancer; entered into the model separately); Model 3a adjusted for all covariates in model 1b plus energy and intakes of fish, red meat, processed food, polyunsaturated fatty acids, monounsaturated fatty acids, and saturated fatty acids; Model 3b adjusted for all covariates in model 3a plus vitamin K<sub>1</sub> or vitamin K<sub>2</sub>, as appropriate.

\*Median; range in parentheses (all such values).

participants in quintile 1 and after multivariable adjustments (model 1b), participants in quintile 5 had a 22% lower risk of stroke (HR, 0.78; 95% CI, 0.65–0.94), a nonsignificant 9% lower risk of an myocardial infarction (HR, 0.91; 95% CI, 0.81–1.02), and a 34% lower risk of having PAD (HR, 0.66; 95% CI, 0.54–0.80) (Figure S1). For vitamin K<sub>2</sub> intake, compared with participants in quintile 1 and after multivariable adjustments (model 1b), participants in quintile 5 had a 16% lower risk of an myocardial infarction (HR, 0.84; 95% CI, 0.76–0.93), and a 16% lower risk of having PAD (HR, 0.84; 95% CI, 0.70–1.01). Vitamin K<sub>2</sub> intake was not significantly associated with validated stroke cases (Figure S1).

### Sensitivity Analyses

Censoring participants upon the prescription of a VKA did not change the association between vitamin K<sub>1</sub> or vitamin K<sub>2</sub> intakes and ASCVD (Figures S2 and S3). For vitamin K<sub>1</sub> intake, compared with participants in quintile 1 and after multivariable adjustments (model 1b), participants in quintile 5 had a 12% lower risk of having

a PCI or CABG procedure during follow-up (HR, 0.88; 95% CI, 0.80, 0.96) (Figure S4). For vitamin K<sub>2</sub> intake, participants in quintile 5 had a 14% lower risk of having a PCI or CABG procedure during follow-up (HR, 0.86; 95% CI, 0.78–0.94).

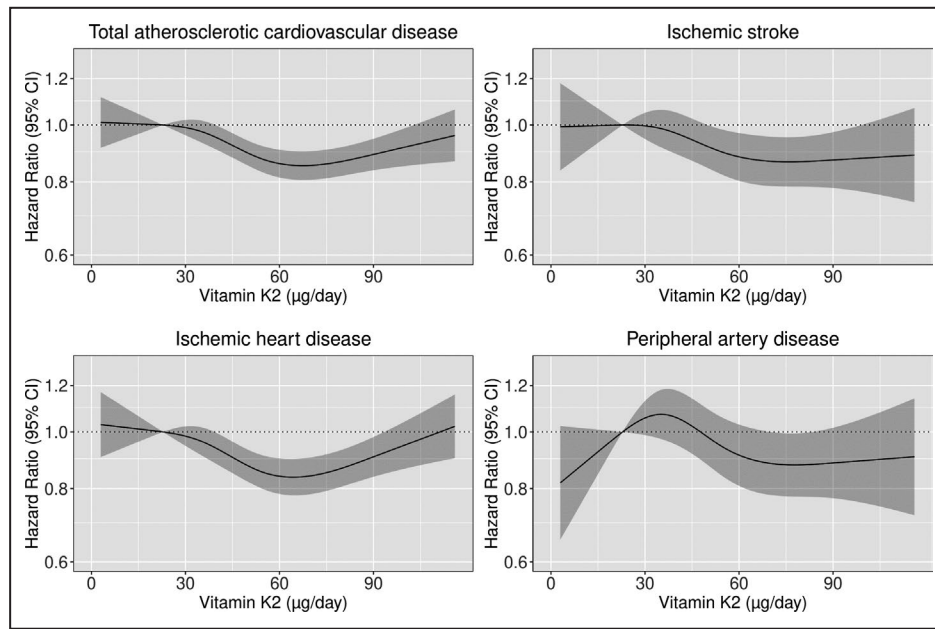
### Falsification End Point Analysis

In total, 1716 participants were hospitalised for colorectal cancer over the study period. There was no significant association between intakes of either vitamin K<sub>1</sub> or vitamin K<sub>2</sub> and our falsification end point, colorectal cancer (Table S5).

## DISCUSSION

In this large prospective cohort study of Danish individuals, we observed that both vitamin K<sub>1</sub> and vitamin K<sub>2</sub> intakes were independently, inversely, and nonlinearly associated with ASCVD hospitalizations. The association between both forms of vitamin K and ASCVD hospitalizations was present for all ASCVD subtypes.





**Figure 3.** Hazard ratios from Cox proportional hazards model with restricted cubic spline curves describing the association between vitamin K<sub>2</sub> intake (µg/d) and both total atherosclerotic cardiovascular disease (ASCVD) hospitalizations and subtypes of ASCVD hospitalizations (ischemic heart disease, peripheral artery disease, and ischemic stroke). Hazard ratios are based on models adjusted for age, sex, body mass index, smoking status, social economic status (income), physical activity, alcohol intake, and education (model 1b), and are comparing the specific level of vitamin K<sub>2</sub> intake (horizontal axis) to the median intake for participants in the lowest-intake quintile (23 µg/d).

In the present study, participants in the highest vitamin K<sub>1</sub> intake quintile (median 192 µg/d) had a 14%, 17%, and 34% lower risk of an IHD-, stroke-, and PAD-related hospitalization, respectively, compared with those in the lowest-intake quintile (median, 57 µg/d). Similar findings have been observed in 2 large observational cohort studies investigating the association between dietary vitamin K<sub>1</sub> intake and ASCVD events. Two studies, the Nurses' Health study (72 874 female nurses; 1679 coronary heart disease events)<sup>19</sup> and the Health Professionals' Follow-up study (40 087 male health care professionals; 1857 coronary heart disease events),<sup>20</sup> report a 21% lower risk and a 16% lower risk of coronary heart disease events, respectively. In contrast, prior studies have not observed a relationship between vitamin K<sub>1</sub> intake and stroke<sup>19,20,42</sup> or PAD.<sup>43</sup> Interestingly, the median vitamin K<sub>1</sub> intake in cohorts from other studies<sup>19–22,42–44</sup> exceeds the median intake of vitamin K<sub>1</sub> in the current study. The low vitamin K<sub>1</sub> intake in the current study, most apparent in the lowest quintile, serves as an important comparator providing adequate power to detect the cardioprotective potential of high vitamin K<sub>1</sub> intake, while also identifying the detrimental impact of low vitamin K<sub>1</sub> intake on ASCVD risk, which is most apparent below ~50 µg/d.

Vitamin K<sub>2</sub> intake was inversely associated with a 14% lower risk of ASCVD hospitalizations, and this

association was present for all ASCVD subtypes. In the Prospect-EPIC cohort (16 057 women; 480 coronary heart disease events), a 10 µg/day higher vitamin K<sub>2</sub> intake was associated with a 9% lower risk of coronary heart disease.<sup>22</sup> In the Rotterdam Study (4807 men and women; 233 coronary heart disease events), individuals in the highest tertile of vitamin K<sub>2</sub> intake had a 41% lower risk of incident coronary heart disease compared with those in the lowest tertile.<sup>21</sup> Another study of 35 476 Dutch individuals, with a comparatively lower baseline vitamin K<sub>2</sub> intake (mean 30.7 µg/d), observed no relationship between vitamin K<sub>2</sub> intake and risk of stroke.<sup>42</sup> However, this cohort had a young mean age of 49 ± 12 years with high prevalence of hypertension (36.8%), accruing only 324 cases of ischemic stroke during a mean follow-up of 12 years. Vissers et al<sup>43</sup> reported, in a large prospective cohort study (36 629 participants; 489 events), a dose-responsive reduction in PAD incidence for higher vitamin K<sub>2</sub> intakes (HR per 10 µg/d higher intake, 0.92; 95% CI, 0.85–0.99), supporting the inverse association with vitamin K<sub>2</sub> observed in our study. In the present study, the median vitamin K<sub>2</sub> intake is mostly higher than the median vitamin K<sub>2</sub> intakes in other studies that have identified a beneficial association between vitamin K<sub>2</sub> intake and ASCVD risk.<sup>21,22,43,44</sup> However, the relatively higher vitamin

$K_2$  intake in our cohort permitted the discovery of a nonlinear, and in fact more “U-shaped” association between vitamin  $K_2$  intake and ASCVD risk, which, to the best of our knowledge, has not previously been described. This may reflect a competing increase in ASCVD risk associated with overconsumption of vitamin  $K_2$ -rich foods (ie, cheese, eggs, butter).

Corroborating the findings of the current study, a recent meta-analysis of 3 separate cohorts totaling 3891 participants described an 18% higher risk of the combined end point of cardiovascular disease (858 events) or all-cause mortality (1209 events) in those individuals with low circulating vitamin  $K_1$  ( $\leq 0.5$  nmol/L) compared with those with high circulating vitamin  $K_1$  ( $> 1.0$  nmol/L).<sup>14</sup> This difference was driven mostly by all-cause mortality. Another meta-analysis of 1190 participants from 3 studies quantified functional vitamin K deficiency using plasma dephosphorylated-uncarboxylated Matrix Gla protein. The authors describe a 57% higher risk of cardiovascular disease events (220 events) in the highest tertile (reflecting relative functional vitamin K deficiency), compared with the lowest tertile of dephosphorylated-uncarboxylated Matrix Gla protein.<sup>18</sup> In the same study, the authors observed an 8% lower risk of total coronary heart disease events for vitamin  $K_1$  (4249 events),<sup>19–22</sup> and a 30% lower risk for vitamin  $K_2$  (713 events),<sup>21,22</sup> comparing the highest and lowest tertiles of dietary intake. No association was observed between vitamin  $K_1$  and either nonfatal myocardial infarction or stroke, or between vitamin  $K_2$  and fatal coronary heart disease. The findings of the present study support the association observed for coronary heart disease and additionally provide novel information on the protective associations of both vitamin  $K_1$  and vitamin  $K_2$  with stroke, PAD, and indeed, total ASCVD events.

There are several mechanisms by which vitamin K may lower the risk of ASCVD events. Systemic inflammation is an important component of ASCVD initiation and propagation, and inhibiting the systemic inflammatory process reduces cardiovascular disease events.<sup>2</sup> Serum vitamin  $K_1$  levels have been inversely related to serum inflammatory markers in large prospective cohort studies.<sup>8</sup> Consequently, suppressing systemic inflammation may explain a net reduction in ASCVD events. Additionally, vitamin K may assist in regulating insulin resistance<sup>45,46</sup> and hemostasis,<sup>9</sup> both important in the pathogenesis of ASCVD.<sup>3,47</sup> Finally, vitamin K, via the action of the Matrix Gla protein, is important in the inhibition of pathological arterial calcification,<sup>48,49</sup> a potent marker of increased cardiovascular disease risk.<sup>5</sup> A randomized controlled trial of 388 older men and women observed a protective effect of vitamin  $K_1$  supplementation on the progression of coronary calcification, but only in a subset of patients with established coronary calcification (coronary calcification score  $> 10$ ).<sup>10</sup> Taken together, these data support the

concept that diets rich in vitamin K may, in a multifactorial manner, reduce future ASCVD risk.

The current study has a number of implications for future research. First, the clinical importance of vitamin K deficiency has mostly been attributed to the accompanying coagulopathies. In light of the cardioprotective associations witnessed in the current study, further research is needed to determine the thresholds of vitamin K deficiency that may warrant intervention for the purpose of cardioprotection. Second, the differential effects of vitamin K on ASCVD subtypes warrants further research to identify high-risk subgroups who may benefit from a diet high in vitamin K. Finally, further research is needed into whether vitamin K supplementation is a safe and feasible primary prevention therapy for ASCVD.

Our study comes with some limitations common to nutritional epidemiology. First, the observational nature of this study means that we cannot infer causality. Second, the ethnic homogeneity of the cohort may limit the overall generalizability of our findings. Third, the diet associated with higher vitamin K intake is generally healthy; however, we employed numerous methods to reduce the impact of residual dietary confounding, such as the use of a falsification end point, stratification of vitamin  $K_1$  intake by total vegetable intake, and adjustment for potential dietary confounders. Finally, the outcomes of interest were determined from ICD coding of hospital admissions, which are susceptible to error. However, our validated case analysis yielded comparable results, indicating that any misclassification did not bias our results. The FFQ used in the current study was acquired from a single time point that represented a long preceding period, which may be susceptible to recall bias, and dietary behaviors may change over time. In addition, this FFQ has not been validated for vitamin K, though prior studies have observed significant relationships between vitamin K determined from FFQs and serum markers of vitamin K intake.<sup>50</sup> Importantly, the limitations of the FFQ would likely lead to a reduction in the power to detect an association, and the true relationship between vitamin K intake and ASCVD risk may be stronger than we report. Our study has several significant strengths; a large sample size with up to 23 years of follow-up, allowing for the accumulation of a high number of events, the availability of important participant characteristics, enabling appropriate methods to be employed to reduce residual confounding and a very minimal loss to follow-up ( $< 0.3\%$ ).

In this prospective cohort study, both dietary vitamin  $K_1$  intake and vitamin  $K_2$  intake were inversely related to ASCVD hospitalization risk and very low vitamin  $K_1$  was associated with a higher risk of ASCVD hospitalizations. Given the very different food sources, these data support an independent protective effect for both subtypes of vitamin K. Further research is

needed to identify at-risk individuals who would benefit most from increased dietary vitamin K intake or supplementation.

## ARTICLE INFORMATION

Received December 16, 2020; accepted July 7, 2021.

### Affiliations

School of Medicine (J.W.B., L.C.B., C.P.B., J.R.L., M.S., J.M.H., C.S.) and School of Population and Global Health (K.M.), University of Western Australia, Perth, Australia; Department of Cardiology, Royal Perth Hospital, Perth, Australia (J.W.B., C.S.); Department of Cardiology, Herlev & Gentofte University Hospital, Copenhagen, Denmark (F.D., G.G.); Institute for Nutrition Research, School of Medical and Health Sciences, Edith Cowan University, Perth, Australia (E.C., L.C.B., C.P.B., J.R.L., M.S., J.M.H., N.P.B.); Centre for Kidney Research, Children's Hospital at Westmead, School of Public Health, Sydney Medical School, The University of Sydney, Sydney, NSW, Australia (J.R.L.); School of Biomedical Sciences, University of Western Australia, Royal Perth Hospital, Perth, WA, Australia (K.D.C., N.P.B.); The National Institute of Public Health, University of Southern Denmark, Odense, Denmark (G.G.); The Danish Heart Foundation, Copenhagen, Denmark (G.G.); Department of Clinical Investigation and Cardiology, Nordsjælland Hospital, Hillerød, Denmark (C.T.-P.); Department of Public Health, Aarhus University, Aarhus, Denmark (C.T.-P., K.O.); The Danish Cancer Society Research Centre, Copenhagen, Denmark (A.T., N.P.B.); Department of Public Health, University of Copenhagen, Copenhagen, Denmark (A.T.); and Aalborg University Hospital, Aalborg, Denmark (K.O.).

### Acknowledgments

Author contributions: Drs Bellinge, Dalgaard and N. Bondonno designed research (project conception, development of overall research plan, and study oversight), with all authors approving the study protocol. Drs Tjønneland and Overvad conducted the original cohort study. E. Connolly and Drs Blekkenhorst and N. Bondonno calculated vitamin K intake from FFQ data; Drs N. Bondonno, Murray, and Dalgaard analyzed data; Drs Bellinge, Dalgaard and N. Bondonno wrote the paper and had primary responsibility for final content; all authors assisted with interpretation of the results and critically reviewed the manuscript. All authors read and approved the final version of the manuscript.

### Sources of Funding

The Danish Diet, Cancer, and Health Study was funded by the Danish Cancer Society, Denmark. Dr Dalgaard is funded by the Danish Heart Foundation (grant number 17-R115-A7443-22062; <https://herteforeningen.dk/>) and Gangstedfonden (grant number A35136; <http://www.gangstedfonden.dk/>), Denmark. Dr Bondonno is funded by a National Health and Medical Research Council Early Career Fellowship (grant number APP1159914; <https://www.nhmrc.gov.au/>), Australia. The salary of Dr Lewis is supported by a National Heart Foundation of Australia Future Leader Fellowship (ID: 102817; <https://www.heartfoundation.org.au/>). The salary of Dr Hodgson is supported by a National Health and Medical Research Council of Australia Senior Research Fellowship (Grant number APP1116937; <https://www.nhmrc.gov.au/>). J.W. Bellinge is supported by an Australian Government Research Training Program Scholarship at the University of Western Australia (<https://www.education.gov.au/research-training-program>). E. Connolly is supported by an Australian Government Research Training Program Scholarship at Edith Cowan University (<https://www.education.gov.au/research-training-program>). Dr Blekkenhorst is supported by a National Health and Medical Research Council of Australia Emerging Leadership Investigator Grant (ID: 1172987; <https://www.nhmrc.gov.au/>) and a National Heart Foundation of Australia Post-Doctoral Research Fellowship (ID: 102498; <https://www.heartfoundation.org.au/>). This study was supported by the Raine Medical Research Foundation and the Healy Medical Research Foundation (RCA06-20). The funders had no role in the design of the study, collection, analysis, or interpretation of the data.

### Disclosures

Dr Gislason: has received grants from Bristol-Myers Squibb, Pfizer, Boehringer Ingelheim, and Bayer outside the submitted work. Dr. Torp-Pedersen reports grants from Bayer and Novo Nordisk outside the submitted work. Dr. Schultz

reports grants and personal fees from Abbott Vascular outside the submitted work. The remaining authors have no disclosures to report.

## Supplementary Material

Tables S1–S5, Figures S1–S4

## REFERENCES

- World Health Organisation. *Global Atlas on cardiovascular disease prevention and control*. Geneva: World Health Organisation; 2011: Cited 14 May 2020 [http://www.who.int/cardiovascular\\_diseases/publications/atlas\\_cvd/en](http://www.who.int/cardiovascular_diseases/publications/atlas_cvd/en).
- Ridker PM, Everett BM, Thuren T, MacFadyen JG, Chang WH, Ballantyne C, Fonseca F, Nicolau J, Koenig W, Anker SD, et al. Antiinflammatory therapy with canakinumab for atherosclerotic disease. *N Engl J Med*. 2017;377:1119–1131. DOI: 10.1056/NEJMoa1707914.
- Junker R, Heinrich J, Schulte H, Van De Loo J, Assmann G. Coagulation factor VII and the risk of coronary heart disease in healthy men. *Arterioscler Thromb Vasc Biol*. 1997;17:1539–1544. DOI: 10.1161/01.ATV.17.8.1539.
- McNeill AM, Rosamond WD, Girman CJ, Golden SH, Schmidt MI, East HE, Ballantyne CM, Heiss G. The metabolic syndrome and 11-year risk of incident cardiovascular disease in the atherosclerosis risk in communities study. *Diabetes Care*. 2005;28:385–390. DOI: 10.2337/diacare.28.2.385.
- Detrano R, Guerci AD, Carr JJ, Bild DE, Burke G, Folsom AR, Liu K, Shea S, Szklo M, Bluemke DA, et al. Coronary calcium as a predictor of coronary events in four racial or ethnic groups. *N Engl J Med*. 2008;358:1336–1345. DOI: 10.1056/NEJMoa072100.
- Shearer MJ, Newman P. Metabolism and cell biology of vitamin K. *Thromb Haemost*. 2008;100:530–547. DOI: 10.1160/TH08-03-0147.
- Palmer CR, Blekkenhorst LC, Lewis JR, Ward NC, Schultz CJ, Hodgson JM, Croft KD, Sim M. Quantifying dietary vitamin K and its link to cardiovascular health: a narrative review. *Food Funct*. 2020;11:2826–2837. DOI: 10.1039/C9FO02321F.
- Shea MK, Booth SL, Massaro JM, Jacques PF, D'Agostino RB, Dawson-Hughes B, Ordovas JM, O'Donnell CJ, Kathiresan S, Keaney JF, et al. Vitamin K and vitamin D status: associations with inflammatory markers in the Framingham offspring study. *Am J Epidemiol*. 2008;167:313–320. DOI: 10.1093/aje/kwm306.
- Mackie IJ, Bull HA. Normal haemostasis and its regulation. *Blood Rev*. 1989;3:237–250. DOI: 10.1016/0268-960X(89)90031-3.
- Shea MK, O'Donnell CJ, Hoffmann U, Dallal GE, Dawson-Hughes B, Ordovas JM, Price PA, Williamson MK, Booth SL. Vitamin K supplementation and progression of coronary artery calcium in older men and women. *Am J Clin Nutr*. 2009;89:1799–1807. DOI: 10.3945/ajcn.2008.27338.
- Dalmeijer GW, Van Der Schouw YT, Magdeleyns EJ, Vermeer C, Verschuren WMM, Boer JMA, Beulens JWW. Matrix gla protein species and risk of cardiovascular events in type 2 diabetic patients. *Diabetes Care*. 2013;36:3766–3771. DOI: 10.2337/dc13-0065.
- Riphagen IJ, Keyzer CA, Drummen NEA, de Borst MH, Beulens JWW, Gansevoort RT, Geleijnse JM, Muskiet FAJ, Navis G, Visser ST, et al. Prevalence and effects of functional vitamin K insufficiency: the PREVENT study. *Nutrients*. 2017;9:1–10. DOI: 10.3390/nu9121334.
- Danziger J, Young RL, Shea MK, Tracy RP, Ix JH, Jenny NS, Mukamal KJ. Vitamin K-dependent protein activity and incident ischemic cardiovascular disease: The multi-ethnic study of atherosclerosis. *Arterioscler Thromb Vasc Biol*. 2016;36:1037–1042. DOI: 10.1161/ATVBAHA.116.307273.
- Shea MK, Barger K, Booth SL, Matuszek G, Cushman M, Benjamin EJ, Kritchevsky SB, Weiner DE. Vitamin K status, cardiovascular disease, and all-cause mortality: A participant-level meta-analysis of 3 US cohorts. *Am J Clin Nutr*. 2020;111:1170–1177. DOI: 10.1093/ajcn/nqaa082.
- Knapen MHJ, Braam LAJLM, Drummen NE, Bekers O, Hoeks APG, Vermeer C. Menaquinone-7 supplementation improves arterial stiffness in healthy postmenopausal women. *Thromb Haemost*. 2015;113:1135–1144. DOI: 10.1160/TH14-08-0675.
- Shea MK, O'Donnell CJ, Vermeer C, Magdeleyns EJP, Crosier MD, Gundberg CM, Ordovas JM, Kritchevsky SB, Booth SL. Circulating uncarboxylated matrix Gla protein is associated with vitamin K

- nutritional status, but not coronary artery calcium, in older adults. *J Nutr*. 2011;141:1529–1534. DOI: 10.3945/jn.111.139634.
17. Theuwissen E, Cranenburg EC, Knapen MH, Magdeleyns EJ, Teunissen KJ, Schurgers LJ, Smit E, Vermeer C. Low-dose menaquinone-7 supplementation improved extra-hepatic vitamin K status, but had no effect on thrombin generation in healthy subjects. *Br J Nutr*. 2012;108:1652–1657. DOI: 10.1017/S0007114511007185.
  18. Chen HG, Sheng LT, Zhang YB, Cao AL, Lai YW, Kunutsor SK, Jiang L, Pan A. Association of vitamin K with cardiovascular events and all-cause mortality: a systematic review and meta-analysis. *Eur J Nutr*. 2019;58:2191–2205. DOI: 10.1007/s00394-019-01998-3.
  19. Erkkilä AT, Booth SL, Hu FB, Jacques PF, Manson JE, Rexrode KM, Stampfer MJ, Lichtenstein AH. Phylloquinone intake as a marker for coronary heart disease risk but not stroke in women. *Eur J Clin Nutr*. 2005;59:196–204. DOI: 10.1038/sj.ejcn.1602058.
  20. Erkkilä AT, Booth SL, Hu FB, Jacques PF, Lichtenstein AH. Phylloquinone intake and risk of cardiovascular diseases in men. *Nutr Metab Cardiovasc Dis*. 2007;17:58–62. DOI: 10.1016/j.numecd.2006.03.008.
  21. Geleijnse JM, Vermeer C, Grobbee DE, Schurgers LJ, Knapen MHJ, van der Meer IM, Hofman A, Witteman JCM. Dietary intake of menaquinone is associated with a reduced risk of coronary heart disease: the Rotterdam study. *J Nutr*. 2004;134:3100–3105. DOI: 10.1093/jn/134.11.3100.
  22. Gast GCM, de Roos NM, Sluijs I, Bots ML, Beulens JWW, Geleijnse JM, Witteman JC, Grobbee DE, Peeters PHM, van der Schouw YT. A high menaquinone intake reduces the incidence of coronary heart disease. *Nutr Metab Cardiovasc Dis*. 2009;19:504–510. DOI: 10.1016/j.numecd.2008.10.004.
  23. Tjønneland A, Olsen A, Boll K, Stripp C, Christensen J, Engholm G, Overvad K. Study design, exposure variables, and socioeconomic determinants of participation in Diet, Cancer and Health: a population-based prospective cohort study of 57,053 men and women in Denmark. *Scand J Public Health*. 2007;35:432–441. DOI: 10.1080/14034940601047986.
  24. Pedersen CB. The Danish civil registration system. *Scand J Public Health*. 2011;39:22–25. DOI: 10.1177/1403494810387965.
  25. Petersson F, Baadsgaard M, Thygesen LC. Danish registers on personal labour market affiliation. *Scand J Public Health*. 2011;39:95–98. DOI: 10.1177/1403494810408483.
  26. Wallach Kildemoes H, Toft Sørensen H, Hallas J. The Danish national prescription registry. *Scand J Public Health*. 2011;39:38–41. DOI: 10.1177/1403494810394717.
  27. Lynge E, Sandegaard JL, Rebolj M. The Danish national patient register. *Scand J Public Health*. 2011;39:30–33. DOI: 10.1177/1403494811401482.
  28. Overvad K, Tjønneland A, Haraldsdóttir J, Ewertz M, Jensen OM. Development of a semiquantitative food frequency questionnaire to assess food, energy and nutrient intake in Denmark. *Int J Epidemiol*. 1991;20:900–905. DOI: 10.1093/ije/20.4.900.
  29. Tjønneland A, Overvad K, Haraldsdóttir J, Bang S, Ewertz M, Jensen OM. Validation of a semiquantitative food frequency questionnaire developed in Denmark. *Int J Epidemiol*. 1991;20:906–912. DOI: 10.1093/ije/20.4.906.
  30. Food data (frida.fooddata.dk), version 4, 2019, National Food Institute, Technical University of Denmark. Date accessed: 15.04.2019
  31. US Department of Agriculture, Agricultural Research Service. FoodData Central, 2019. fdc.nal.usda.gov. Date accessed: 15.04.2019
  32. Schurgers LJ, Vermeer C. Determination of phylloquinone and menaquinones in food. *Haemostasis*. 2000;30:298–307. DOI: 10.1159/000054147.
  33. Manoury E, Jourdon K, Boyaval P, Fourcassié P. Quantitative measurement of vitamin K2 (menaquinones) in various fermented dairy products using a reliable high-performance liquid chromatography method. *J Dairy Sci*. 2013;96:1335–1346. DOI: 10.3168/jds.2012-5494.
  34. Lewis JR, Brennan-Speranza TC, Levinger I, Byrnes E, Lim EM, Blekkenhorst LC, Sim M, Hodgson JM, Zhu K, Lim WH, et al. Effects of calcium supplementation on circulating osteocalcin and glycated haemoglobin in older women. *Osteoporos Int*. 2019;30:2065–2072. DOI: 10.1007/s00198-019-05087-3.
  35. Sundbøll J, Adelborg K, Munch T, Frøslev T, Sørensen HT, Bøtker HE, Schmidt M. Positive predictive value of cardiovascular diagnoses in the Danish National Patient Registry: a validation study. *BMJ Open*. 2016;6:e012832. DOI: 10.1136/bmjopen-2016-012832.
  36. Lühndorf P, Overvad K, Schmidt EB, Johnsen SP, Bach FW. Predictive value of stroke discharge diagnoses in the Danish National Patient Register. *Scand J Public Health*. 2017;45:630–636. DOI: 10.1177/1403494817116582.
  37. Lasota AN, Overvad K, Eriksen HH, Tjønneland A, Schmidt EB, Grønholdt MLM. Validity of peripheral arterial disease diagnoses in the Danish National Patient Registry. *Eur J Vasc Endovasc Surg*. 2017;53:679–685. DOI: 10.1016/j.ejvs.2016.12.031.
  38. Hansen CP, Overvad K, Tetens I, Tjønneland A, Parner ET, Jakobsen MU, Dahm CC. Adherence to the Danish food-based dietary guidelines and risk of myocardial infarction: a cohort study. *Public Health Nutr*. 2018;21:1286–1296. DOI: 10.1017/S1368980017003822.
  39. Schmidt M, Schmidt SAJ, Sandegaard JL, Ehrenstein V, Pedersen L, Sørensen HT. The Danish National Patient Registry: a review of content, data quality, and research potential. *Clin Epidemiol*. 2015;7:449–490. DOI: 10.2147/CLEP.S91125.
  40. Ekholm O, Hesse U, Davidsen M, Kjoller M. The study design and characteristics of the Danish national health interview surveys. *Scand J Public Health*. 2009;37:758–765. DOI: 10.1177/1403494809341095.
  41. Noordzij M, Leffondré K, Van Stralen KJ, Zoccali C, Dekker FW, Jager KJ. When do we need competing risks methods for survival analysis in nephrology? *Nephrol Dial Transplant*. 2013;28:2670–2677. DOI: 10.1093/ndt/gft355.
  42. Vissers LET, Dalmeijer GW, Boer JMA, Monique Verschuren WM, van der Schouw YT, Beulens JWW. Intake of dietary phylloquinone and menaquinones and risk of stroke. *J Am Heart Assoc*. 2013;2(1–8):e000455. DOI: 10.1161/JAHA.113.000455.
  43. Vissers LET, Dalmeijer GW, Boer JMA, Verschuren WMM, van der Schouw YT, Beulens JWW. The relationship between vitamin K and peripheral arterial disease. *Atherosclerosis*. 2016;252:15–20. DOI: 10.1016/j.atherosclerosis.2016.07.915.
  44. Haugsgjerd TR, Egeland GM, Nygård OK, Vinknes KJ, Sulo G, Lysne V, Iglund J, Tell GS. Association of dietary vitamin K and risk of coronary heart disease in middle-age adults: the Hordaland Health Study Cohort. *BMJ Open*. 2020;10:e035953. DOI: 10.1136/bmjopen-2019-035953.
  45. Beulens JWW, van der A DL, Grobbee DE, Sluijs I, Spijkerman AMW, van der Schouw YT. Spijkerman AMW, van der Schouw YT. Dietary phylloquinone and menaquinones intakes and risk of type 2 diabetes. *Diabetes Care*. 2010;33:1699–1705. DOI: 10.2337/dc09-2302.
  46. Yoshida M, Jacques PF, Meigs JB, Saltzman E, Shea MK, Gundberg C, Dawson-Hughes B, Dallal G, Booth SL. Effect of vitamin K supplementation on insulin resistance in older men and women. *Diabetes Care*. 2008;31:2092–2096. DOI: 10.2337/dc08-1204.
  47. Collaboration ERF. Diabetes mellitus, fasting blood glucose concentration, and risk of vascular disease: a collaborative meta-analysis of 102 prospective studies. *Lancet*. 2010;375:2215–2222. DOI: 10.1016/S0140-6736(10)60484-9.
  48. Luo G, Ducey P, McKee MD, Pinero GJ, Loyer E, Behringer RR, Karsenty G. Spontaneous calcification of arteries and cartilage in mice lacking matrix GLA protein. *Nature*. 1997;386:78–81. DOI: 10.1038/386078a0.
  49. Schurgers LJ, Spronk HMH, Skepper JN, Hackeng TM, Shanahan CM, Vermeer C, Weissberg PL, Proudfoot D. Post-translational modifications regulate matrix Gla protein function: importance for inhibition of vascular smooth muscle cell calcification. *J Thromb Haemost*. 2007;5:2503–2511. DOI: 10.1111/j.1538-7836.2007.02758.x.
  50. Nimptsch K, Nieters A, Hailer S, Wolfram G, Linseisen J. The association between dietary vitamin K intake and serum undercarboxylated osteocalcin is modulated by vitamin K epoxide reductase genotype. *Br J Nutr*. 2008;101:1812–1820. DOI: 10.1017/S0007114508131750.

# **Supplemental Material**

**Table S1. International Classification of Disease codes used to determine validated cases of atherosclerotic cardiovascular disease**

<b>Validated Diagnosis</b>	<b>ICD codes (ICD-8; ICD-10)</b>	<b>Follow-up</b>
Myocardial infarction	I21	10-02-1994 to 04-07-2013
Peripheral artery disease	I702, I702A, I739A, I739B, I739C	14-11-1994 to 07-12-2009
Ischemic stroke	I63	04-03-1994 to 30-11-2009

The methods for validating these cases have been published previously<sup>35-39</sup>.

**Table S2. Anatomical Therapeutic Chemical codes for antihypertensive medications**

Use of antihypertensive medication was defined by the usage of any combination of at least two of the seven different drugs classes at the same time.	<p><u>Non-Loop</u>: Thiazides C02L, C02DA, C07B, C07D, C09XA52, C03A, C03EA;</p> <p><u>Low-ceiling diuretics (excl. thiazides)</u>: C03B, C03X, C07C, C08G, C09BA, C09DA; potassium-sparing agents (spiron): C03D, C03E, C03EB</p> <p><u>Loop</u>: high-ceiling diuretics (Loop) C03C, C03EB</p> <p><u>Antiadrenergic agents</u>: C02A, C02B, C02C</p> <p><u>Beta-blockers</u>: C07A, C07B, C07C, C07D, C07F</p> <p><u>Vasodilators</u>: C02DB, C02DD, C02DG</p> <p><u>Calcium channel blockers</u>: C08, C09BB, C09DB</p> <p><u>Renin angiotensin system inhibitors and angiotensin II receptor blockers</u>: C09AA, C09BA, C09BB, C09CA, C09DA, C09DB, C09XA02, C09XA52</p>
---	---

**Table S3. Intakes and main dietary sources of vitamin K<sub>1</sub> and vitamin K<sub>2</sub> in the Danish Diet Cancer and Health cohort**

Vitamin K	Median [IQR] intake (µg/day)	Main dietary sources
Vitamin K <sub>1</sub>	113.8 [80.7 – 151.2]	Margarine (12.5%), lettuce (12.0%), broccoli (6.8%), wholemeal bread (6.9%), spinach (5.5%)
Vitamin K <sub>2</sub>	43.7 [31.1 – 61.5]	
MK-4	19.0 [13.4 – 25.4]	Eggs (15%), butter (9.4%), cheese (6.8%)
MK-5	0.4 [0.3 – 0.5]	Hard cheese (69.8%)
MK-6	0.6 [0.4 – 0.8]	Hard cheese (33.7%)
MK-7	0.6 [ 0.4 – 0.9]	Hard cheese (44.6%)
MK-8	5.3 [3.8 – 9.7]	Hard cheese (59.1%), brie cheese (6.6%)
MK-9	13.2 [9.0 – 26.9]	Hard cheese (71.2%), brie cheese (9.4%), blue cheese (6.2%)
MK-10	0.7 [ 0.4 – 1.7]	Hard cheese (85.4%)

**Table S4. Association between incident atherosclerotic cardiovascular disease and vitamin K<sub>1</sub> intake, stratified by tertiles of total vegetable intake**

Baseline vegetable intake tertile		Vitamin K <sub>1</sub> intake quintiles				
		Q1	Q2	Q3	Q4	Q5
<b>1</b>	No. events	1 916	1 063	412	106	24
	HR (95% CI)	ref.	0.97 (0.90, 1.06)	0.93 (0.85, 1.02)	0.85 (0.74, 0.98)	0.74 (0.55, 0.99)
<b>2</b>	No. events	201	693	922	687	216
	HR (95% CI)	ref.	0.84 (0.73, 0.96)	0.79 (0.67, 0.92)	0.76 (0.65, 0.88)	0.61 (0.50, 0.75)
<b>3</b>	No. events	25	107	355	733	1 266
	HR (95% CI)	ref.	0.88 (0.79, 0.97)	0.78 (0.64, 0.95)	0.72 (0.55, 0.93)	0.73 (0.58, 0.93)

Hazard ratios (95% CI) for atherosclerotic cardiovascular disease hospitalisations during 23 years of follow-up, obtained from Cox proportional hazards models using Model 1b for adjustment: age, sex, BMI, smoking status, physical activity, alcohol intake, social economic status (income), and education.

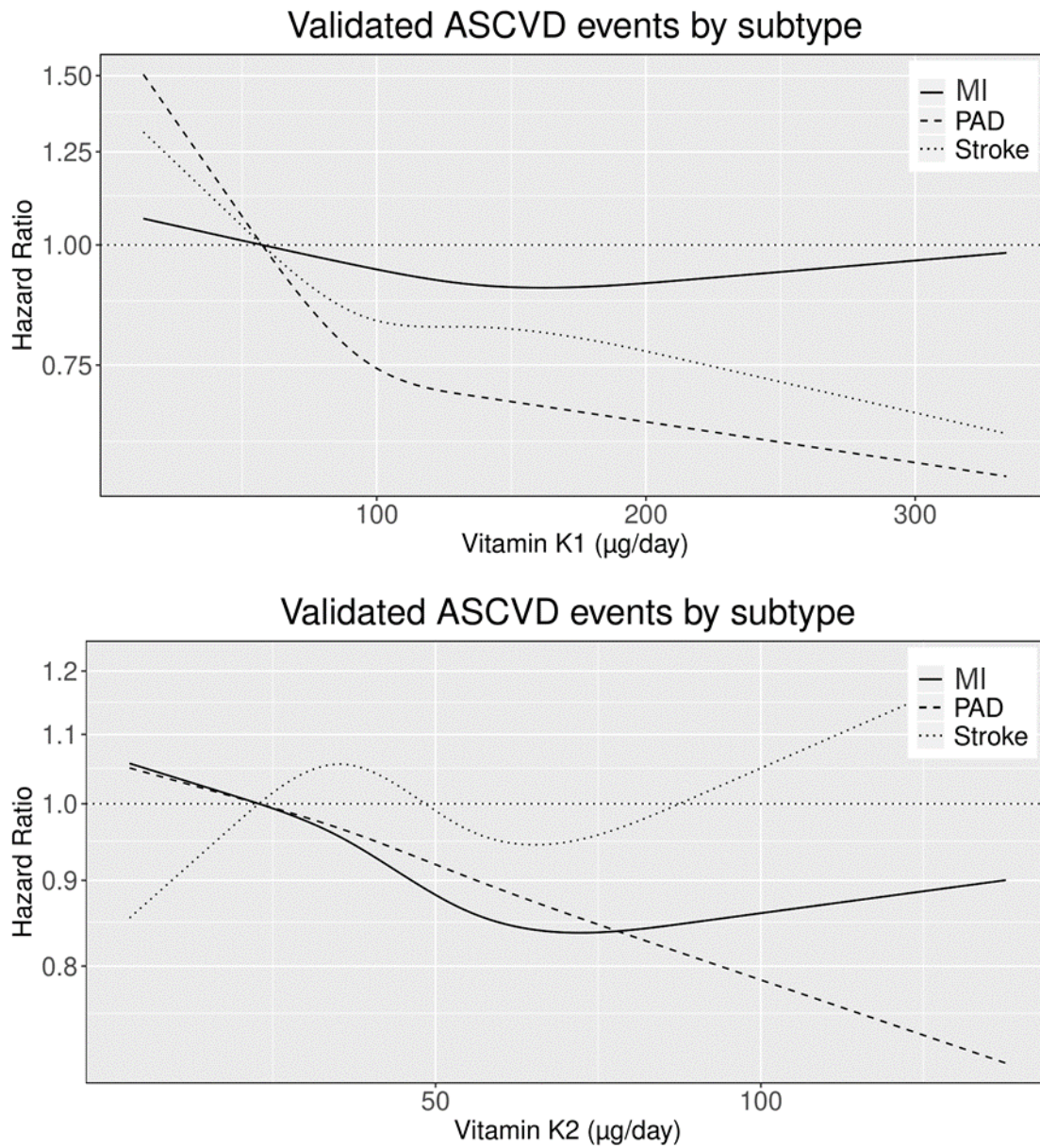
**Table S5. Hazard ratios of colorectal cancer hospitalisations by quintiles of vitamin K intake**

	Vitamin K intake quintiles				
	Q1	Q2	Q3	Q4	Q5
<b>Vitamin K<sub>1</sub></b>					
Model 1b	ref.	1.02 (0.92, 1.13)	1.02 (0.91, 1.14)	0.99 (0.88, 1.13)	0.93 (0.82, 1.07)
<b>Vitamin K<sub>2</sub></b>					
Model 1b	ref.	1.02 (0.93, 1.12)	0.98 (0.88, 1.10)	0.91 (0.80, 1.02)	0.89 (0.78, 1.01)

Hazard ratios (95% Confidence Intervals) for colorectal cancer hospitalisations (n = 1 716) during 23 years of follow-up, obtained from restricted cubic splines based on Cox proportional hazards models. Model 1b adjusted for age, sex, BMI, smoking status, physical activity, alcohol intake, social economic status (income), and education.

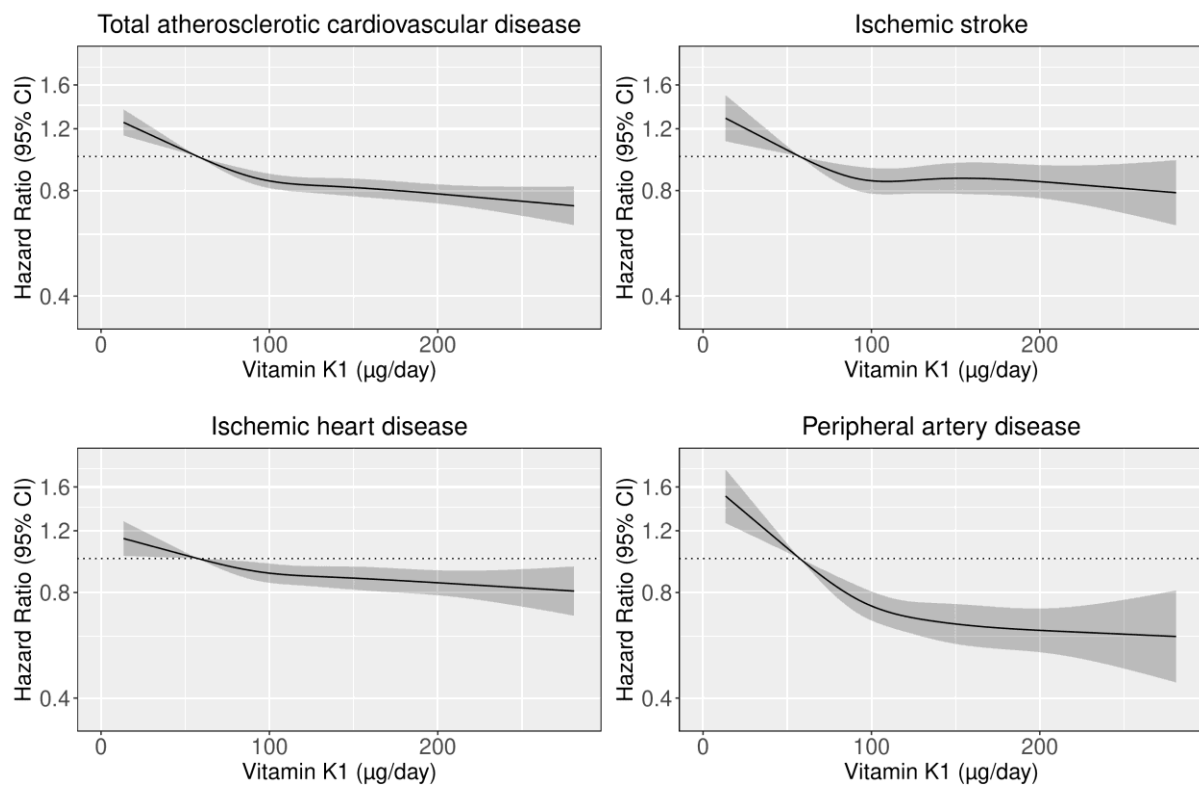


**Figure S1. Hazard ratios from Cox proportional hazards models using restricted cubic spline curves describing the association between vitamin K<sub>1</sub> and vitamin K<sub>2</sub> intake (µg/day) and validated cases of myocardial infarction (MI), peripheral artery disease (PAD), and ischemic stroke.**



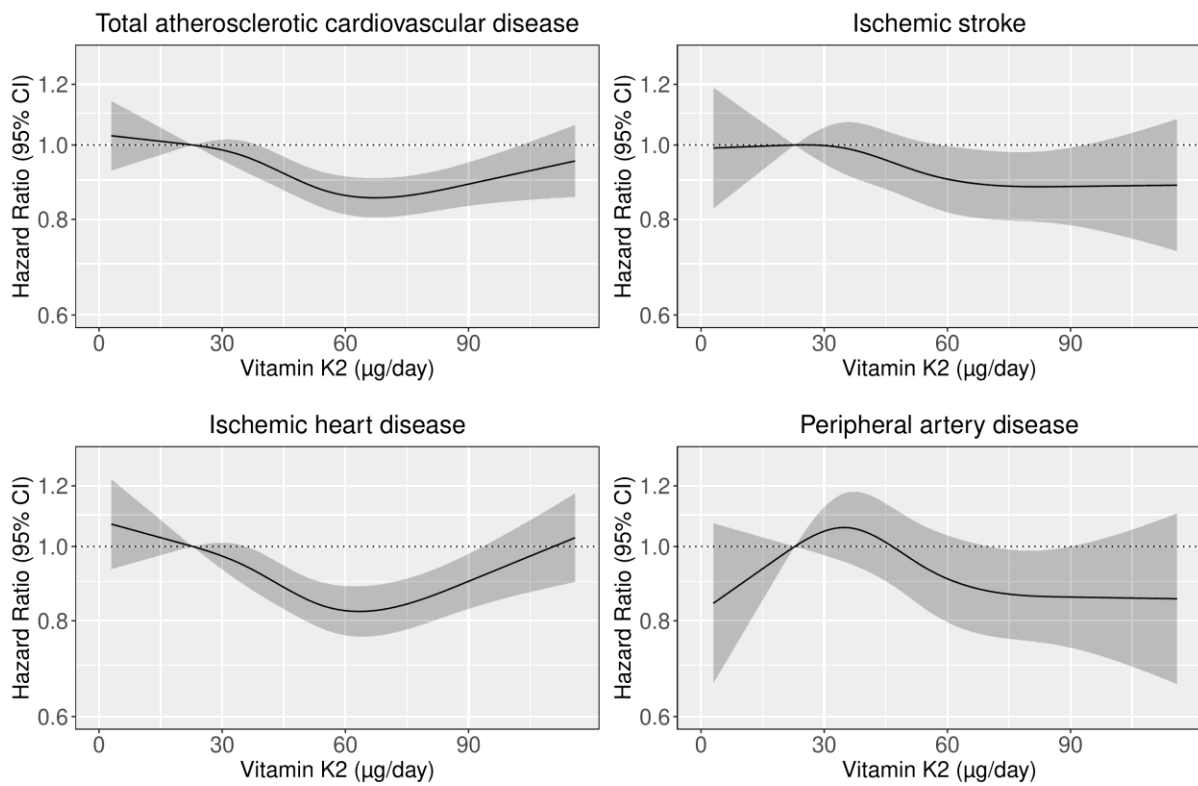
Hazard ratios are based on Cox proportional hazards models adjusted for age, sex, BMI, smoking status, social economic status (income), physical activity, alcohol intake, and education (Model 1b), and are comparing the specific level of vitamin K intake (horizontal axis) to the median intake for participants in the lowest intake quintile (vitamin K<sub>1</sub>: 57 µg/day and vitamin K<sub>2</sub>: 23 µg/day).

**Figure S2. The association between vitamin K<sub>1</sub> intake ( $\mu\text{g}/\text{day}$ ) and both total atherosclerotic cardiovascular disease (ASCVD) hospitalisations and subtypes of ASCVD hospitalisations (ischemic heart disease; peripheral artery disease; and ischemic stroke), after censoring participants upon prescription of a vitamin K antagonist.**



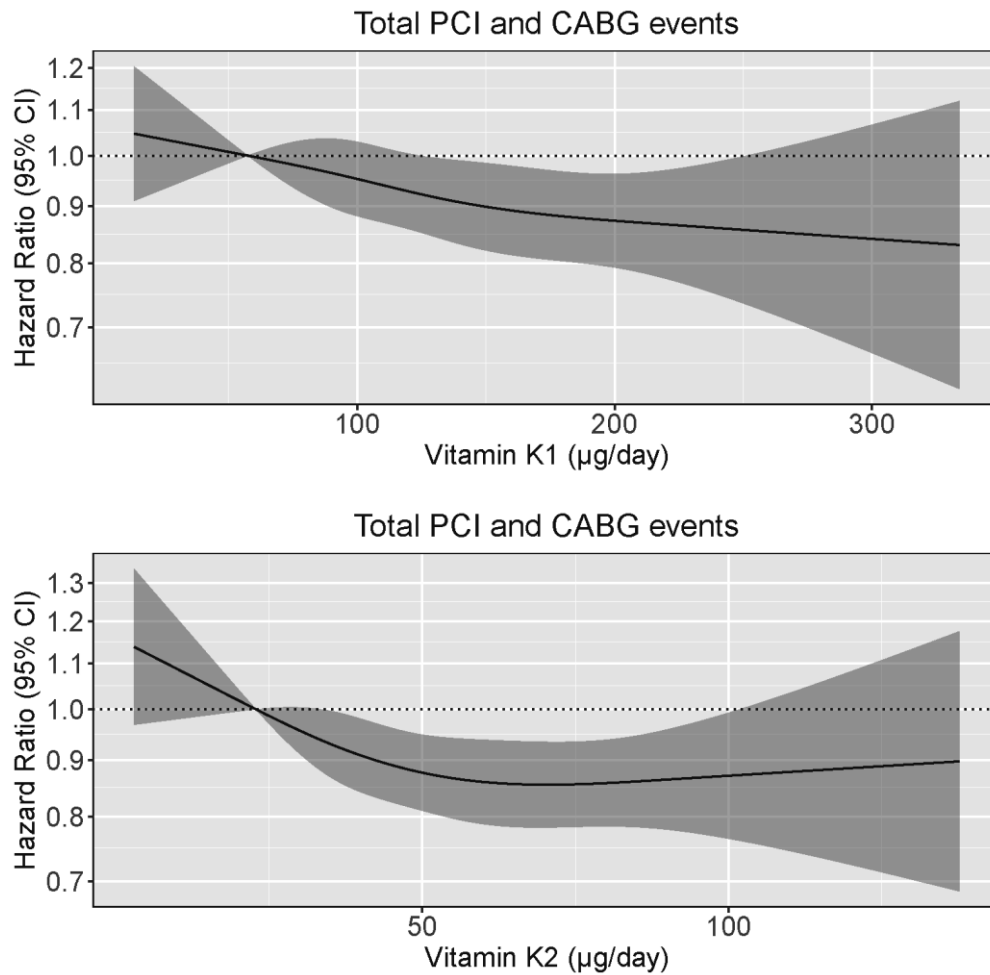
Hazard ratios are derived from Cox proportional hazards model with restricted cubic spline curves adjusting for age, sex, BMI, smoking status, social economic status (income), physical activity, alcohol intake, and education (Model 1b), and are comparing the specific level of vitamin K<sub>1</sub> intake (horizontal axis) to the median intake for participants in the lowest intake quintile (57  $\mu\text{g}/\text{day}$ ).

**Figure S3. The association between vitamin K<sub>2</sub> intake (µg/day) and both total atherosclerotic cardiovascular disease (ASCVD) hospitalisations and subtypes of ASCVD hospitalisations (ischemic heart disease; peripheral artery disease; and ischemic stroke), after censoring participants upon prescription of a vitamin K antagonist.**



Hazard ratios are derived from Cox proportional hazards model with restricted cubic spline curves adjusting for age, sex, BMI, smoking status, social economic status (income), physical activity, alcohol intake, and education (Model 1b), and are comparing the specific level of vitamin K<sub>2</sub> intake (horizontal axis) to the median intake for participants in the lowest intake quintile (23 µg/day).

**Figure S4. Hazard ratios from Cox proportional hazards models using restricted cubic spline curves describing the association between vitamin K intake ( $\mu\text{g}/\text{day}$ ) and both percutaneous coronary intervention (PCI) and coronary artery bypass grafting (CABG) procedures.**



Hazard ratios are based on Cox proportional hazards models adjusted for age, sex, BMI, smoking status, social economic status (income), physical activity, alcohol intake, and education (Model 1b), and are comparing the specific level of vitamin K intake (horizontal axis) to the median intake for participants in the lowest intake quintile (vitamin K<sub>1</sub>: 57  $\mu\text{g}/\text{day}$  and vitamin K<sub>2</sub>: 23  $\mu\text{g}/\text{day}$ ).