


Molecular Evolutionary Dynamics of Energy Limited Microorganisms

William R. Shoemaker ^{*,†} Evgeniya Polezhaeva, Kenzie B. Givens,[‡] and Jay T. Lennon^{*}

Department of Biology, Indiana University, Bloomington, IN, USA

[†]Present address: Department of Ecology and Evolutionary Biology, University of California, Los Angeles, CA, USA

[‡]Present address: Luddy School of Informatics, Computing, and Engineering, Indiana University, Bloomington, IN, USA

^{*}**Corresponding authors:** E-mails: williamrshoemaker@gmail.com; lennonj@iu.edu.

Associate editor: Fabia Ursula Battistuzzi

Abstract

Microorganisms have the unique ability to survive extended periods of time in environments with extremely low levels of exploitable energy. To determine the extent that energy limitation affects microbial evolution, we examined the molecular evolutionary dynamics of a phylogenetically diverse set of taxa over the course of 1,000 days. We found that periodic exposure to energy limitation affected the rate of molecular evolution, the accumulation of genetic diversity, and the rate of extinction. We then determined the degree that energy limitation affected the spectrum of mutations as well as the direction of evolution at the gene level. Our results suggest that the initial depletion of energy altered the direction and rate of molecular evolution within each taxon, though after the initial depletion the rate and direction did not substantially change. However, this consistent pattern became diminished when comparisons were performed across phylogenetically distant taxa, suggesting that although the dynamics of molecular evolution under energy limitation are highly generalizable across the microbial tree of life, the targets of adaptation are specific to a given taxon.

Key words: experimental evolution, microbial evolution, energy limitation, comparative evolution.

Introduction

Organisms frequently encounter environments where growth and reproduction cannot be maintained. This is particularly true for microorganisms, where growth and reproduction are often limited by the flux of exploitable energy (Hobbie and Hobbie 2013; Hoehler and Jørgensen 2013; Lever et al. 2015). The occurrence of microorganisms in these environments is frequent enough that it has been argued that energy limitation constitutes a general constraint on microbial metabolism and growth (Morita 1988, 1993; Maitra and Dill 2015). Because evolution is fundamentally a birth–death process (Doebeli et al. 2017), if a microbial population does not go extinct the extent that energy limitation constrains reproduction would in turn affect its subsequent evolution (Shoemaker and Lennon 2018). However, the majority of evolution experiments are performed in environments that permit rapid growth and those that focus on energy limitation are conducted with a single taxon (Ryan 1959; Finkel and Kolter 1999; Avrani et al. 2017; Aouizerat et al. 2019; Gross et al. 2020; Katz et al. 2021), limiting our ability to draw general conclusions about the evolutionary effects of energy limitation.

In order to understand how energy limitation alters microbial evolutionary dynamics it is necessary to first identify patterns that consistently occur across taxa. These patterns include the rate that de novo mutations accumulate, their nucleotide spectra, and how they change in frequency over

time. Given that the majority of mutations are introduced during genome replication (Kunkel 2004), once cells can no longer reproduce the input of genetic variation should effectively cease until environmental conditions improve and reproduction can resume. However, this prediction can be violated if microorganisms in energy limited environments continue to reproduce at an extremely low rate (Ryan 1959; Finkel and Kolter 1999), a phenomenon known as “cryptic growth” (Banks and Bryers 1990), where genetic diversity can accumulate and environmental effects on the nucleotide spectrum can occur (Saumaa et al. 2002; Maharjan and Ferenci 2015, 2017, 2018; Chib et al. 2017; Shoemaker and Lennon 2018).

However, the evolutionary effect of energy limitation is not limited to the quantity and rate of change of genetic diversity. Rather, certain genes repeatedly acquire mutations in energy limited environments (Zambrano et al. 1993; Zambrano and Kolter 1996; Finkel and Kolter 1999; Zinser and Kolter 2004; Finkel 2006; Kram et al. 2017; Katz et al. 2021; Orsi et al. 2021). These repeated evolutionary outcomes (i.e., parallel evolution) consistently occur across phylogenetically distant taxa (Martínez-García et al. 2003; Bacun-Druzina et al. 2007; Bruno and Freitag 2011; Sewell et al. 2011; Helmus et al. 2012; Ratib et al. 2021), suggesting that adaptation continues as the environment becomes increasingly depleted of exploitable energy. Though such studies rarely manipulate the degree of energy limitation, contrast their observations to those from

© The Author(s) 2021. Published by Oxford University Press on behalf of the Society for Molecular Biology and Evolution.

This is an Open Access article distributed under the terms of the Creative Commons Attribution License (<http://creativecommons.org/licenses/by/4.0/>), which permits unrestricted reuse, distribution, and reproduction in any medium, provided the original work is properly cited.

Open Access

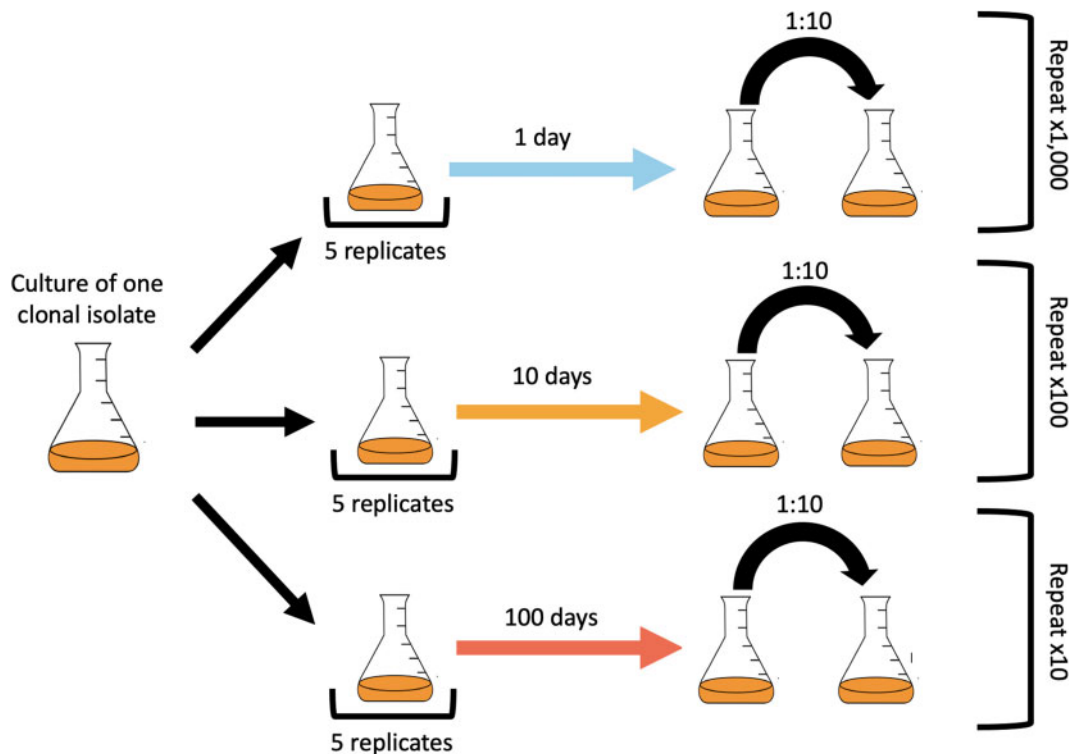


Fig. 1. A conceptual diagram illustrating the experimental protocol performed on each taxon. A single colony isolate was obtained from a given taxon, grown overnight, and split into 15 flasks. Three sets of five flasks were transferred every 1, 10, or 100 days for $\sim 1,000$ days, corresponding to 1,000, 100, and 10 transfers, respectively.

populations in energy-replete environments, or perform comparisons across multiple taxa. These shortcomings prevent us from determining whether the targets of molecular evolution change as the environment transitions from an energy replete to depleted state (i.e., divergent evolution) as well as whether any such change in the direction of evolution can be generalized across the microbial tree of life.

In this study, we examined the molecular evolutionary dynamics of energy limited microbial populations from six bacterial taxa that were propagated for $\sim 1,000$ days, which were chosen to maximize phylogenetic diversity subject to the condition that they all grew in the same environmental conditions (*Bacillus*, *Caulobacter*, *Deinococcus*, *Janthinobacterium*, *Pedobacter*, and *Pseudomonas*). We manipulated energy limitation by extending the time between transfer events, corresponding to transfer times of 1, 10, and 100 days, which allowed us to examine evolutionary outcomes across a range of energy limitation regimes as well as taxa. We examined how genetic diversity, the spectrum of mutations, and the distribution of extinction events were affected by energy limitation. We then examined the degree that energy limitation affected the direction of molecular evolution across all taxa. Finally, we determined whether phylogenetically diverse taxa converged on similar molecular evolutionary outcomes within and across energy limitation regimes.

Results

All 90 replicate populations from six phylogenetically diverse taxa were transferred every 1, 10, or 100 days for 1,000 days

(fig. 1). Although extinction events occurred, we were able to reconstruct the molecular fossil record of virtually all populations through pooled population sequencing, allowing us to examine how mutations arose and changed in frequency over time. We found that molecular evolutionary dynamics were consistently affected by transfer time, our proxy for energy limitation, across phylogenetically diverse taxa. In energy-depleted environments, mutations accumulated at a faster rate than expected based on the timescale of the experiment across all taxa, though the molecular evolutionary dynamics of 10- and 100-day regimes were more similar to one another than either were to the 1-day regime. We found that the spectrum of mutations was consistently affected by energy limitation across all taxa, though the effect on the proportion of nonsynonymous and synonymous polymorphisms (pN/pS) was less consistent, suggesting that the strength of negative selection did not change as energy limitation increased. By comparing the genes that acquired excess nonsynonymous mutations, we found a consistent pattern of divergent evolution among all energy limitation regimes and taxa, where, again, the 10- and 100-day transfer regimes had the highest degree of similarity. However, this pattern of divergent evolution was absent when comparisons were made at a coarser phylogenetic scale, suggesting that it is unlikely that the targets of molecular evolution under energy limitation within a taxon can be generalized across the tree of life. The recurrent patterns we observed within a given taxon leads us to conclude that the rate and direction of molecular evolution consistently shifted across all taxa after energy depletion occurred but remained relatively constant thereafter.

Dynamics and Fates of Mutations under Energy Limitation

Microbial populations continue to acquire genetic diversity under energy limited conditions (Finkel and Kolter 1999), though their quantitative dynamics are rarely examined. To address this, we constructed a molecular fossil record for ~100 populations that evolved for ~1,000 days (supplementary figs. S1–S6, [Supplementary Material](#) online). By examining the accumulation of mutations by time t as the sum of derived allele frequencies ($M(t)$), we found that the accumulation of mutations was fairly consistent across energy limitation regimes, where $M(t)$ typically saturated by day 500 (supplementary figs. S7–S12a–c, [Supplementary Material](#) online). Although population genetic models have not been proposed to describe the trajectory of $M(t)$ over time, we can provide an intuitive explanation for the saturating behavior we observe. All populations were grown from single clonal isolates, meaning that $M(t)$ was initially zero and we would expect it to rapidly increase as de novo mutations are acquired. Because the population is finite, a finite number of mutations can segregate at a given point in time, suggesting that saturation occurs when the increase in $M(t)$ due to mutation and positive selection is roughly balanced by the decrease in $M(t)$ due to negative selection and drift. A similar consistency across treatments and taxa was found for the change in $M(t)$ between timepoints ($\Delta M(t)$; supplementary figs. S7–S12d–f, [Supplementary Material](#) online), suggesting that these general molecular evolutionary patterns were not affected by energy limitation.

By examining the relationship between $M(t)$ and the degree of energy limitation, we were able to determine the degree that different taxa continued to acquire mutations under energy limitation. If cell division completely stopped once the environment was exhausted of energy and the majority of de novo mutations were acquired due to genome replication errors, then the number of mutations $M(t)$ should decay as the time between transfers increased. All taxa deviated from this prediction, where the slope was consistently greater than the null expectation ($\beta_1 > -1$; [fig. 2a–f](#)). This deviation was extreme in certain cases, as the slopes of *Pseudomonas* and *Pedobacter* were virtually zero, indicating that the amount of accumulated genetic diversity remained highly similar despite the wide range of energy limitation regimes. Conversely, the slope of *Bacillus* was closest to the null expectation.

Surprisingly, very few mutations appeared to fix over the course of 1,000 days, even in populations that were transferred daily (supplementary figs. S1–S6, [Supplementary Material](#) online). Using a previously developed Hidden Markov Model-based approach (Good et al. 2017), we confirmed this observation by assigning each mutation a final state (i.e., fixed, extinct, or polymorphic; [fig. 2g](#) and [supplementary figs. S7–S12, Supplementary Material](#) online). The comparative absence of fixations made it difficult to compare substitution rates between treatments and taxa due to the excess number of zeros. However, some general conclusions could still be made. Beyond the low number of fixation

events, only *Pedobacter* and *Bacillus* experienced a sharp decline in fixation events as the time between transfers increased ([fig. 2g](#)). Although there is no obvious explanation for the disparity in the former, the sharp decline in *Bacillus* was likely driven, again, by its ability to form protective endospores.

Despite the lack of fixations, it was clear that few mutations reached frequencies ≥ 0.4 in 10- and 100-day transfer regimes, even if the change in $M(t)$ remained constant (supplementary figs. S7–S12, [Supplementary Material](#) online). Leveraging this observation, we examined the distribution of the maximum observed frequency of all mutations (f_{\max}) to infer whether the trajectories of mutations varied among energy limitation regimes. We found that the distribution of f_{\max} in the 1-day transfer regime was clearly distinct from the 10- and 100-day regimes, whereas the latter two regimes largely overlapped ([fig. 2h](#)). Direct comparison of f_{\max} cumulative distributions confirmed this, as the mean Kolmogorov–Smirnov distance between all combinations of energy limitation regimes was significant (permutational ANOVA: $F = 1.63$, $P = 0.0430$). The mean distance remained high for 1 versus 10-days and 1 versus 100-days comparisons, but notably dropped for 10 versus 100-days comparisons ([fig. 2h](#)). This drop in f_{\max} suggests that the trajectory of de novo mutations was altered after the initial depletion of exploitable energy, where nominally beneficial mutations could not continue to increase in frequency.

We note the absence of any segregation of intermediate-frequency mutations (i.e., clade formation) across all taxa and transfer regimes. This observation seemingly contrasts with the repeated emergence of quasi-stable clades in an experiment with similar energy limitation regimes conducted over a similar evolutionary timescale with *Escherichia coli* (Behringer et al. 2018, 2019) as well as the proposal that the emergence of clades is a general feature of microbial evolution (Good and Hallatschek 2018). The lack of structure in our experiment was likely caused by differences in experimental design, as our experiment was performed in well-mixed flasks rather than test tubes with a lack of headspace (Behringer et al. 2018, 2019), meaning that there was no spatial structure that could promote the emergence of population genetic structure. Though experimental design does not entirely account for the lack of structure, as other evolution experiments using well-mixed flasks have documented the emergence of coexisting clades, the Long-term Evolution Experiment (LTEE) with *E. coli* being the most notable example (Good et al. 2017). However, the average timescale for the emergence of new clades in the LTEE was ~16,000 generations, far longer than our longest experimental timescale of ~3,000 generations. This disparity in evolutionary timescales suggests that although energy limitation alone is insufficient to promote the emergence of multiple clades on short-evolutionary timescales, we cannot rule out the possibility of clades eventually emerging if the experiment had continued.

The Molecular Spectra of De Novo Mutations

We determined the degree that energy limitation affected the spectrum of mutations by examining the transition rates of all

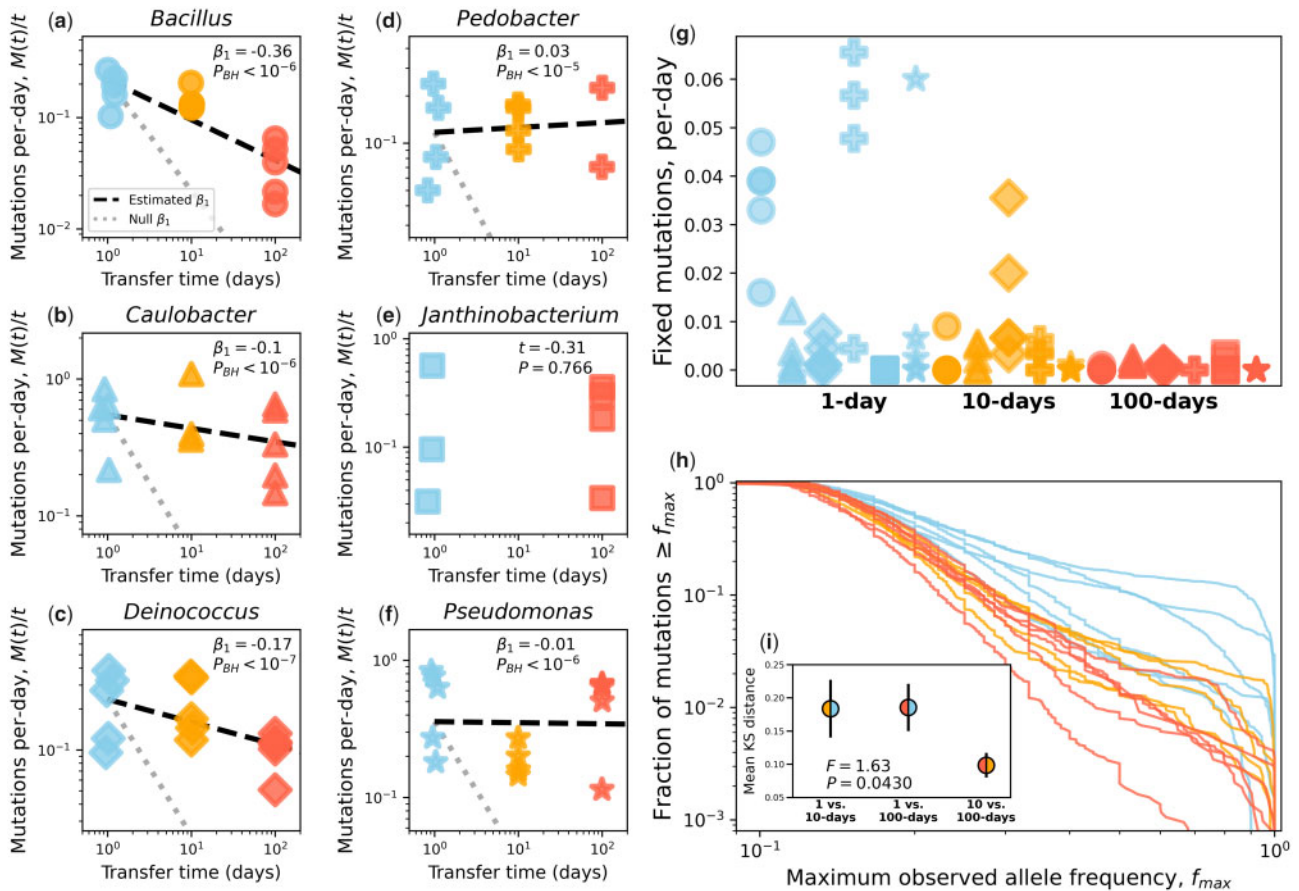


Fig. 2. (a–f) The relationship between mutations and transfer time varied across taxa and deviated from the null expectation (gray dotted line). However, the slope of *Bacillus* was the closest to the null expectation, consistent with the interpretation that dormancy acted as an evolutionary buffer. A t -test was performed on *Janthinobacterium* instead of a regression due to the high extinction rate of populations in the 10-day energy limitation regime. (g) The total number of fixation events was fairly low and highly variable regardless of treatment. (h) As an alternative analysis, we examined the empirical cumulative distribution of the maximum frequency that mutations reached f_{max} for each taxon-treatment combination. To examine which energy limitation regimes were similar, we calculated the mean Kolmogorov–Smirnov distance among all taxa for a given pair of energy limitation regimes (inset figure in (h), black bars represent the standard error of the mean). Samples from a Gaussian have been added to the x -axes of (a–f) for visibility.

mutations at 4-fold redundant sites. By performing dimensionality reduction on a population-by-spectra matrix (i.e., PCA), we found that replicate populations largely grouped by their energy limitation regime (supplementary fig. S13, Supplementary Material online). A permutational multivariate analysis of variance (PERMANOVA) test using a permutation structure that controlled for taxon identity confirmed this observation ($F = 5.77$, $P < 10^{-4}$). By examining the factor loadings, we found the nucleotide spectra that are correlated with the first and second principal components (supplementary table S1, Supplementary Material online). The transversion $A : T \rightarrow C : G$ was highly correlated with the first principle component ($\rho_{\text{Pearson}}^2 = 0.91$, $P < 10^{-4}$) whereas the transition $A : T \rightarrow G : C$ was correlated with the second ($\rho_{\text{Pearson}}^2 = 0.76$, $P = 0.002$), suggesting that these mutational spectra were affected by energy limitation.

Expanding our scope from synonymous mutations, we examined the spectrum of nonsynonymous and synonymous mutations to determine the degree that positive and negative selection change as energy limitation increases. Given the lack

of fixation events within populations in 10- and 100-day transfer regimes, our comparative analyses were limited to polymorphic mutations. However, we were able to leverage the large number of mutations we observed to compare the ratio of nonsynonymous to synonymous polymorphisms (pN/pS) between transfer regimes, which we examined as a function of f_{max} rather than as a single snapshot so that we could control for the qualitatively different mutation trajectories found in each energy limitation regime. In general, we found that pN/pS remained considerably less than 1 as f_{max} increased, 1-day *Janthinobacterium* being the sole exception and only for $f_{max} > 0.4$ (fig. 3e). This result is consistent with the hypothesis that negative selection predominantly occurs across microbial genomes (Hahn 2018; Garud et al. 2019). To determine whether the relationship between f_{max} and pN/pS varied by energy limitation regime, we calculated the mean absolute deviation (MAD) for each taxon across all pairs of energy limitation regimes. We found that the mean absolute deviation (\pm standard error) in pN/pS was greater between the 1-day transfer regime and the 10- and 100-day transfer

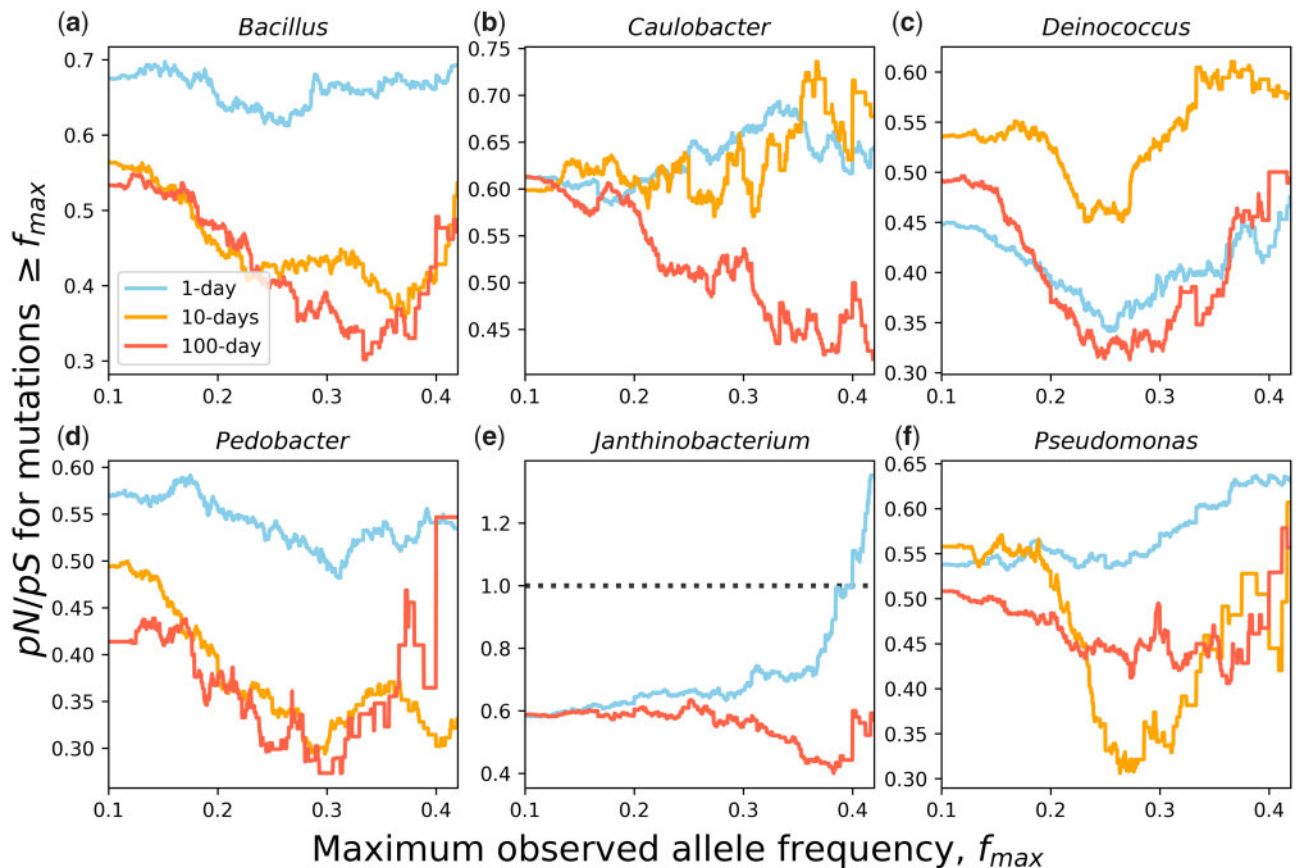


Fig. 3. (a–f) We examined the ratio of the number of nonsynonymous to synonymous polymorphic mutations contingent on the maximum frequency that a mutation reached (f_{\max}). Generally, values of pN/pS remain less than one across all transfer-regimes and taxa, suggesting the negative selection was highly prevalent.

regimes ($\overline{MAD}_{1,10} = 0.130 \pm 0.0262$, $\overline{MAD}_{1,100} = 0.133 \pm 0.0251$) than for the latter two regimes ($\overline{MAD}_{10,100} = 0.0785 \pm 0.0166$). This pattern is consistent with the observation that the molecular evolutionary dynamics were affected by the initial depletion of energy and remained relatively constant as the degree of energy limitation increased. However, through a permutational ANOVA, we found that the difference in \overline{MAD} over our three treatment comparisons was not significant ($F = 1.12$, $P = 0.446$), suggesting that any change in the strength of negative selection as energy limitation increased was weak relative to the overall strength of negative selection operating across all regimes.

Although a complete explanation for the expected relationship between f_{\max} and pN/pS is beyond the goals of this study, it is worth discussing the notable “U” shape exhibited by many taxon-treatment combinations (fig. 3). Assuming that a typical nonsynonymous mutation confers a fitness benefit, we would expect nonsynonymous mutations to reach a higher frequency than those that are neutral. Suppose that nonsynonymous mutations are primarily beneficial. In this scenario, as we increase f_{\max} , we would expect pN/pS to also increase. Contrastingly, suppose instead that nonsynonymous mutations are primarily deleterious. We would then expect that the typical nonsynonymous mutation would reach a lower frequency than the typical neutral mutation, as it cannot reach a frequency greater than the

inverse of the population scaled strength of selection $1/N|s|$ known as the drift barrier (Lynch et al. 2016; Cvijović et al. 2018). In this scenario, as we increase f_{\max} we expect pN/pS to decrease. Putting these two pieces together, we have constructed a heuristic explanation for the U-shape of f_{\max} versus pN/pS , where the lower point of the curve reflects a transition from deleterious to beneficial effects among nonsynonymous mutations. A rigorous explanation for this empirical pattern is a potential avenue of future research.

The majority of populations survived the experiment, though many *Caulobacter*, *Janthinobacterium*, and *Pedobacter* replicate populations repeatedly went extinct. Because all replicate populations were initially genetically identical, the dispersion of extinction events within a treatment contained information about whether the rate of extinction was contingent on a population’s evolutionary history. If the per-generation rate of extinction was sufficiently rare and an independent process, we would expect that the distribution of extinction events would follow a Poisson distribution. However, if mutations acquired by a given population over the course of the experiment affected the probability of extinction (i.e., historical contingency), the distribution should be overdispersed relative to a Poisson. By comparing the coefficient of variation (CV) calculated from empirical data (CV) to a null distribution generated from Poisson sampling, we found that extinctions in the 10-day

Table 1. The Distribution of Extinction Events among Replicate Populations Suggest Historical Contingency due to the Acquisition of De Novo Mutations in Certain Taxa Within the 10-Day Transfer Regime.

Taxon	Transfer (d.)	\bar{n}_{ext}	CV	P_{BH}
<i>Caulobacter</i>	10	1.2	0.97	0.409
	100	0.6	0.82	0.837
<i>Pedobacter</i>	10	5.4	0.74	0.03
	100	3.2	0.31	0.837
<i>Janthinobacterium</i>	10	7.6	0.75	0.005
	100	1.0	1.1	0.409

NOTE.—By comparing the coefficient of variation (CV) of the number of extinction events to a null distribution calculated from simulations from a Poisson distribution generated using the mean number of extinction events (\bar{n}_{ext}), we determined whether historical contingency occurred within a given taxon-treatment combination. All taxon-treatment combinations where at least three replicate populations went extinct were examined.

transfer regime was overdispersed for *Pedobacter* and *Janthinobacterium* (table 1). This result suggests that mutations acquired over the course of the experiment contributed to repeated extinction events in at least two taxa. It is worth noting that these two taxon-treatment combinations had the highest mean number of extinction events (\bar{n}_{ext}), suggesting that historically contingent extinction events regularly occurred under energy limitation across phylogenetically distant taxa, but that an insufficient number of extinction events occurred in our experiment to detect said signal in all taxon-treatment combinations.

Parallel, Divergent, and Convergent Evolution within Each Taxon

To identify potential targets of adaptation, we examined the set of genes that acquired more nonsynonymous mutations than expected based on gene size within each energy limitation regime for each taxon (i.e., genes that contributed to parallel evolution). We first calculated the number of nonsynonymous mutations pooled across replicate populations at each gene after adjusting for gene size (i.e., multiplicity; Good et al. 2017) and tested whether nonsynonymous mutations were nonrandomly distributed across genes (supplementary information, Supplementary Material online). We easily rejected this null hypothesis for all taxon-treatment combinations ($P < 10^{-4}$; supplementary figs. S15–S20a, Supplementary Material online). We note the presence of a small cluster of genes where the mean maximum observed allele frequency was fairly high ($\bar{f}_{max} > 0.5$), but multiplicity was low (supplementary figs. S14–S19b, Supplementary Material online). The formation of this cluster was likely driven by the fact that few mutations reached appreciable frequencies, which would decrease multiplicity given that it is weighted by total number of mutations in the population (supplementary information, Supplementary Material online). However, few genes acquired more than one high frequency mutation, meaning that we were unable to identify the set of significantly enriched genes conditioned on a minimum f_{max} . Instead, we determined whether parallelism at the gene level was dependent on allele frequency by selecting for mutations with a minimum value of f_{max} and calculating the

likelihood difference of the enrichment of nonsynonymous mutations at certain genes across the genome versus no such enrichment ($\Delta\ell$). We found that $\Delta\ell$ typically increased with f_{max} across energy limitation regimes for the majority of taxa (supplementary fig. S14, Supplementary Material online), which is consistent with the hypothesis that higher frequency mutations were primarily driven by positive selection across energy limitation regimes. A list of genes with at least one fixed mutation and the number of mutations with $f_{max} \geq 0.8$ (excluding synonymous mutations) for each taxon-treatment combination is provided in supplementary table S2, Supplementary Material online.

Using the set of genes that contributed to parallel evolution within each energy limitation regime for each taxon, for a given pair of energy limitation regimes we asked whether the evolved features of these genes were more similar or different than expected by chance. Operating under this broad definition of convergent and divergent evolution at the molecular level, we first examined whether the same genes were consistently enriched. Across taxa, the vast majority of genes that were enriched within a given treatment were enriched across all treatments (supplementary figs. S21–S25, Supplementary Material online), which would suggest that convergent rather than divergent evolution occurred. Simulations modeled on the probability distribution describing the null expectation (eq. 1) confirmed this observation, as the proportion of genes that were enriched within both energy limitation regimes for a given pair was consistently greater than expected by chance for all pairwise combinations of energy limitation regimes across all taxa (fig. 4a; supplementary table S3, Supplementary Material online). However, the degree of convergent evolution across pairs of energy limitation regimes was not equal, as the 10-day versus 100-day comparison had a stronger degree of convergence than all other comparisons (fig. 4a). This result builds on our above observations, providing evidence that the largest shift in the direction of evolution occurred shortly after the environment was depleted of exploitable energy.

Although our definition of convergent/divergent evolution as the proportion of genes that were enriched across energy limitation regimes provided insight, it was likely too coarse an approach as it only considered gene identity. Assuming that each energy limitation manipulation acted as a slight perturbation on the rate of molecular evolution at each gene, gene identity alone would likely be insufficient to detect divergent evolution and would generally suggest convergent evolution of varying degrees. A direct comparison of mutation counts supports this claim, as the set of genes that were enriched across multiple energy limitation regimes consistently differed in the number of mutations acquired (supplementary figs. S15–S20d–f, Supplementary Material online). To quantify this potential divergence, we defined convergent and divergent evolution as the degree that the correlation of mutation counts between energy limitation regimes (ρ) was greater or less than expected by chance. To determine whether a given value of ρ constituted convergent or divergent evolution, we generated a null distribution by randomizing combinations of mutation counts while controlling for the total number of

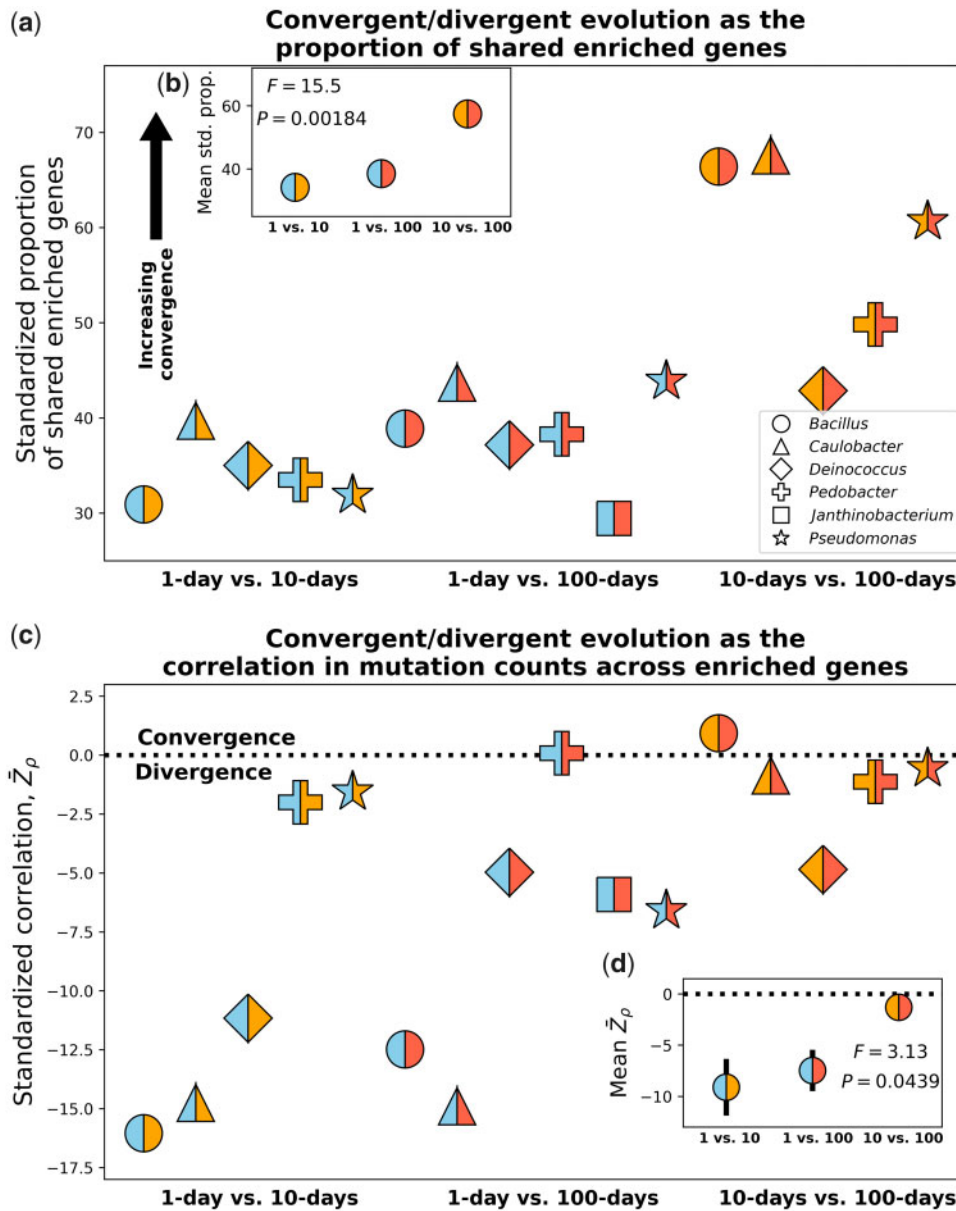


FIG. 4. (a) By defining convergent/divergent evolution as the degree that the proportion of genes that are enriched across treatments is greater or less than expected by chance, we find evidence of convergent evolution across the genome for all pairwise treatment combinations across taxa. (b) A permutational ANOVA indicates that the degree of convergent evolution varied across treatments, the 10- and 100-day energy limitation regimes being the most similar. (c) By examining the number of mutations within each gene, we can determine whether convergent or divergent evolution occurred within genes that were enriched for mutations by calculating the correlation coefficient between each pair of energy limitation regimes and standardizing it to a null distribution for each taxon. Here, standardized correlations less than zero correspond to divergent evolution whereas the opposite suggests convergence. In general, divergent evolution consistently occurred between all pairs of energy limitation regimes. Although 10- and 100-day transfer regimes are more similar to each other than either are to the 1-day regime, the difference is borderline significant using a permutational ANOVA (d) controlling for taxon identity. Black bars in both plots represent standard errors and each color scheme represents a given pair of energy limitation regimes.

mutations acquired within each treatment and gene. By examining the standardized ρ (Z_ρ) of each taxon, we found that divergent evolution consistently occurred across all combinations of energy limitation regimes (fig. 4a and b). Similar to our analysis on gene identity, we found that the mean Z_ρ across taxa was closest to the null expectation for comparisons between 10- and 100-day transfers (fig. 4c). The difference in the degree of divergent evolution was statistically significant ($F = 3.13$, $P = 0.0439$; fig. 4d) and what we

observed was consistent with the reoccurring pattern of the evolutionary dynamics in the 10- and 100-day energy limitation regimes having greater similarity to one another than either one did to the 1-day regime.

Divergent and Convergent Evolution across Taxa

Although divergent and convergent evolution could readily be examined among populations within the same taxon, a similar analysis could not be performed among all

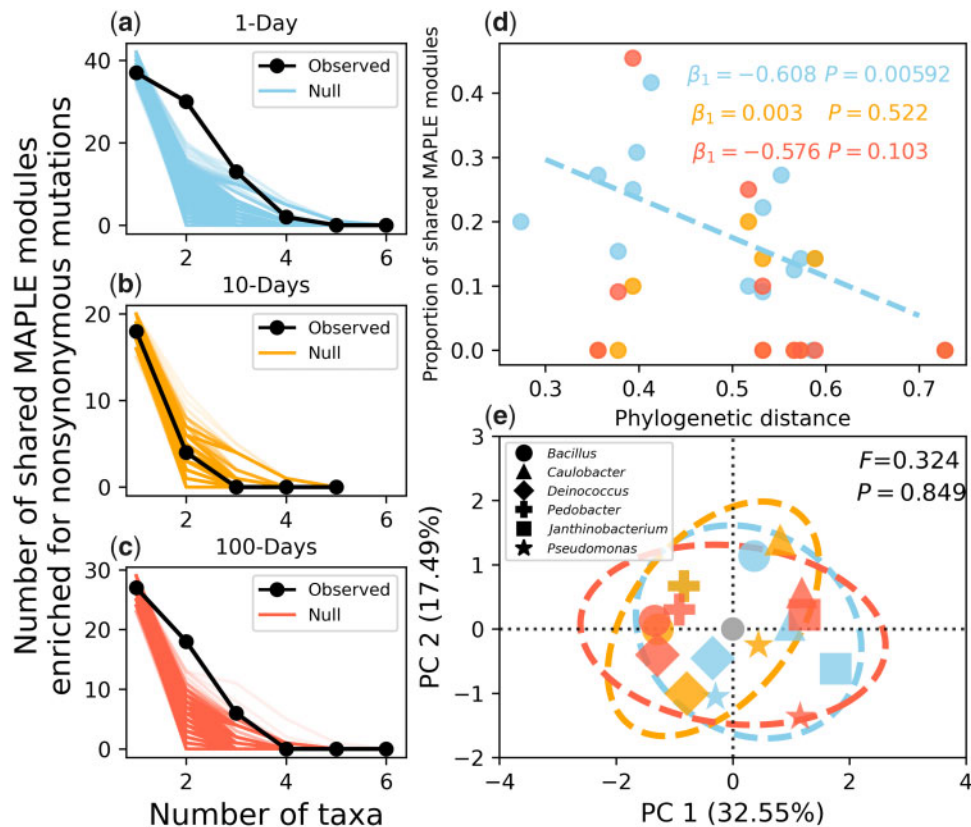


Fig. 5. (a–c) By comparing the observed decay of the number of MAPLE modules as the number of taxa increases to the null expectation, we can see that observed curve tended to decay at a slower rate than the null for 1- and 100-day transfer regimes, suggesting that convergent evolution occurred in those treatments. (d) By examining the relationship between the degree of overlap in the set of enriched MAPLE modules (i.e., the Jaccard index) and the phylogenetic distance of a given pair of taxa, we then examined whether the degree of molecular convergent evolution was correlated with the amount of shared evolutionary history. The distance–decay relationship was significant for the 1-day transfer regime and was quite strong, though ultimately not significant for the 100-day regime, whereas the slope was virtually zero for the 10-day regimes. This result suggests that the convergent evolution illustrated in a and c was driven by shared evolutionary history, where convergent evolution was more likely among phylogenetically similar taxa. (e) PCA was performed to determine whether different MAPLE modules were enriched across different treatment groups (i.e., divergent evolution). Generally, data points tended to cluster together by taxon identity rather than treatment. This result suggests that the signal of divergent evolution between energy limitation regimes that we observed in figure 4 did not persist at a coarse-grained functional level, a conclusion that is supported by the fact that effect of treatment was not significant via PERMANOVA.

phylogenetically diverse taxa due to the lack of shared gene content. Instead, it was necessary to map genes that were enriched for mutations to higher levels of biological organization that were present in all taxa. Therefore, we mapped genes to their functional modules using the Metabolic And Physiological potential Evaluator (MAPLE) (Arai et al. 2018), where we found several modules that were consistently hit across three or more taxa. To test whether this observation was significant, we simulated random draws of genes that were then mapped to their respective modules, from which we generated null rank curves for the number of modules that were hit across all possible combinations of taxa. We found that the observed decay curve deviated from our null expectation (fig. 5a), but only up until four taxa for 1- and 100-day transfers. This pattern suggests that convergent evolution did occur among taxa within the limits of energy repletion (1-day) and depletion (100-days), though the ability to detect this convergence dissipated as additional taxa were included. This reduced rate of decay was driven, at least in part, by shared evolutionary history, as the similarity in

enriched MAPLE modules decays with phylogenetic distance for 1- and 100-day transfer regimes (fig. 5d). We note that although this trend was only significant for 1-day transfers, the slope for the 10-day treatment was virtually zero and the lack of a significant slope in the 100-day treatment can be explained by the low number of nonsynonymous mutations acquired by populations within that treatment, limiting our ability to identify enriched MAPLE modules and inflating the number of observations with zero overlap.

Although there were consistent patterns of convergent evolution across phylogenetically diverse taxa within the 1-day and 100-day energy limitation regimes, there remained the question of whether each regime acquired nonsynonymous mutations in a distinct set of modules. In other words, it was necessary to determine whether energy limitation continued to affect the direction of molecular evolution when all taxa are examined together instead of on an individual basis. By constructing a module-by-taxon/treatment matrix and performing PCA, we found that taxon-treatment combinations tended to cluster together by taxon identity rather than

Table 2. The Number of Taxa with Genes within a MAPLE Module That Were Enriched for Nonsynonymous Mutations.

ModuleID	Module Type	Description	Number of Taxa Enriched/Total Number of Taxa		
			1-day	10-days	100-days
M00307	Pathway	Pyruvate oxidation	2/6	1/5	1/6
M00360	FuncSet	Aminoacyl-tRNA biosynthesis	3/6	1/5	3/6
M00258	Complex	Putative ABC transport system	4/6	2/5	3/6
M00049	Pathway	Adenine ribonucleotide biosynthesis	4/6	2/5	1/6
M00083	Pathway	Fatty acid biosynthesis	3/6	2/5	3/6
M00125	Pathway	Riboflavin biosynthesis	3/6	1/5	1/6
M00015	Pathway	Proline biosynthesis	3/6	1/5	3/6
M00048	Pathway	Inosine monophosphate biosynthesis	3/6	1/5	3/6
M00120	Pathway	Coenzyme A biosynthesis	2/6	0/5	0/6
M00240	Complex	Iron complex transport system	2/6	2/5	3/6

NOTE.—Only modules that were enriched in at least two taxa within a given treatment regime were included. There is a large amount of overlap between transfer-regimes, suggesting that highly conserved genes contributed towards adaptation in similar ways in energy-deplete and -replete environments.

their energy limitation regime (fig. 5e). A PERMANOVA test supports this observation (fig. 5e). Although there was no evidence of genome-wide divergent evolution between energy limitation regimes when comparisons were made at a higher phylogenetic level, we identified individual modules that may be of interest to future research efforts (table 2). Overall, there was a high degree of overlap among energy limitation regimes, where Coenzyme A biosynthesis was the only module enriched in at least two taxa within a single transfer regime. Iron complex transport systems also appeared to be slightly more enriched in 100-day transfer regimes, a micronutrient that has been shown to be essential for the survival of microorganisms in energy limited conditions (Lacour and Landini 2004; Helmus et al. 2012).

Discussion

We found that the molecular evolutionary dynamics of phylogenetically distant taxa were consistently altered as energy limitation increased. In general, genetic diversity accumulated to a higher level than what we would expect if cellular division stopped after populations exited their exponential phase of growth after a single day. This consistent deviation suggests that some degree of cellular division continued while the population remained in an energy limited state, as it is doubtful that mutation alone would be capable of driving de novo mutations to detectable frequencies. Although the biological mechanism responsible for this continued reproduction cannot be identified from mutation trajectory data, it is likely due to surviving cells scavenging dead cells, the only available resource, for energy (Bradley et al. 2018; Shoemaker et al. 2021). This hypothesis is supported by the observation that the slope of *Bacillus* was closest to the null out of all taxa examined, which was likely due to *Bacillus* being the only taxon capable of forming nonreproductive endospores that buffer the accumulation of de novo genetic diversity (Blath et al. 2016; Shoemaker and Lennon 2018). Though *Pseudomonas* and *Pedobacter* were noted outliers, where energy-limited populations accumulated similar quantities of genetic diversity as energy-replete populations. A prior study found evidence that these taxa are capable of surviving energy-limitation and reproducing by recycling dead cells, which

may explain how genetic diversity continued to be acquired after the populations exited their exponential phase of growth and the extreme values exhibited in *Pseudomonas* and *Pedobacter* populations (Shoemaker et al. 2021). This dynamic may be further compounded by the accumulation of mutations between replication events (Gangloff et al. 2017; Gangloff and Arcangioli 2017).

Comparisons of the molecular dynamics of different energy limitation regimes revealed that the frequency trajectories of mutations and the spectrum of nonsynonymous and synonymous polymorphic mutations pN/pS had higher similarity between 10- and 100-day regimes than either one did to the 1-day regime. A similar pattern was also found in our analyses of the direction of molecular evolution at the gene level, where the degree of divergent evolution was at its lowest for comparisons made between 10- and 100-day regimes across taxa. Furthermore, the nucleotide mutation spectra of energy-limited populations were consistently altered across taxa, suggesting that mutations acquired between transfer events contributed toward the patterns of diversity we observed. These altered dynamics are likely partially due to the effects of stress in energy-depleted environments on the mutation spectrum, which has been noted in prior studies (Saumaa et al. 2002; Maharjan and Ferenci 2015, 2017, 2018; Chib et al. 2017; Shoemaker and Lennon 2018). This recurring pattern of populations in 10- and 100-day treatments being more similar to one another than either were to the 1-day treatment suggests that the main effect of energy limitation on molecular evolution occurred shortly after the populations exited their exponential phase of growth, an observation consistent with recent findings documenting the physiological and cellular changes that microorganisms incur after energy depletion and may be relevant to clinical contexts (Kram et al. 2020).

Despite the generality of the effect of energy limitation on the molecular evolutionary dynamics within a given taxon, the signal of this pattern dissipated when comparisons were made between phylogenetically distant taxa. By coarse-graining genes to a higher level of functional annotation, we found that convergent evolution occurred among phylogenetically distant taxa within certain energy limitation regimes. However, the same biological functions contributed

to these signals of convergent evolution in energy repleted and depleted environments. Alternatively stated, although phylogenetically distant taxa acquired mutations at the same molecular targets within certain energy limitation regimes and divergent evolution occurred between energy limitation regimes within each taxon, the statistical signal of divergent evolution was lost when comparisons were made among all taxa. This lack of signal suggests that although energy limitation can consistently alter the rate and direction of molecular evolution in predictable ways, the targets of adaptation likely vary across phylogenetically distant taxa.

The lack of biological functions enriched for mutations within a specific energy limitation regime casts doubt on whether universal contributors towards adaptation can be identified by comparing evolve-and-resequence experiments from phylogenetically distant taxa. The absence of such contributors contrasts with the consistent effect that energy limitation has on evolutionary dynamics within a given taxon. This supposed contradiction can be resolved by accounting for the observation that energy limitation effects birth–death dynamics in a consistent manner across the microbial tree of life (Shoemaker et al. 2021), whereas proposing that different cellular mechanisms contribute towards adaptation within a given taxon. To compensate for this lack of signal, we argue that future efforts to investigate adaptation in energy limited environments should focus on characterizing the cellular effects of mutations that reach high frequencies. This approach, redolent of the framework of evolutionary cell biology (Lynch et al. 2014; Lynch and Trickovic 2020), would circumnavigate the issue of annotation conservation and allow researchers to instead examine conserved cellular features that contribute to adaptation across phylogenetically distant taxa.

Materials and Methods

Long-Term Evolution under Energy Limitation

Energy limitation was manipulated by extending the time between transfers for microbial populations. We performed our energy limited evolution experiments using the following microbial taxa: *Bacillus subtilis* NCIB 3610 (ASM205596v1), *Caulobacter crescentus* NA1000 (ASM2200v1), *Deinococcus radiodurans* BAA-816 (ASM856v1), *Janthinobacterium* sp. KBS0711 (ASM593795v2), *Pedobacter* sp. KBS0701 (ASM593864v2), *Pseudomonas* sp. KBS0710 (ASM593804v2). A single colony was isolated from each taxon and grown in 10 ml of PYE media with 0.2% glucose and 0.1% casamino acids (2 g bactopectone, 1 g yeast extract, 0.3 g $\text{MgSO}_4 \times 7 \text{H}_2\text{O}$, 2 g dextrose, 1 g casamino acids in 1 l E-Pure H_2O with 50 ml of a 10 g/ml cycloheximide solution added after autoclaving to prevent fungal contamination) in a 50-ml Erlenmeyer flask. A cultured flask of each taxon was transferred once a day for two days before being split between 15 flasks. Five replicates of each taxon were transferred as 1-ml aliquots into 9 ml of medium every 1, 10, or 100 days for ~1,000 days. All flasks were organized in a 25 °C shaker at 250 RPM such that no two populations of the same

taxon were adjacent. One- and 10-day treatments were cryopreserved in 20% glycerol at –80 °C on days 30, 60, and 100 in 100-day increments, whereas 100-day treatments were cryopreserved every 100 days. Every 100 days biomass was cryopreserved for sequencing, where biomass was centrifuged, decanted, and flash frozen with liquid nitrogen and placed into a –80 °C freezer until DNA extraction was performed. We tested for contamination by plating media and examining colonies every 100 days, as all taxa had distinct colony coloration, colony morphology, and media coloration. The sole contamination we found was the growth of airborne fungi during the first 100 days of our experiment, which we prevented by adding cycloheximide to the media and adding a UV light to the air filter of the shaker.

Given that $\log_2(10) \approx 3.3$ generations per-transfer, over a maximum of 1,000 days this experiment amounted to an evolutionary timescale of 3,300, 330, and 33 generations for 1-, 10-, and 100-day transfers, respectively. Although we tested all taxa to make sure that they could survive 10 and 100 days without media replenishment, two 100-day *Pedobacter* populations and four 10-day *Janthinobacterium* populations repeatedly went extinct starting at day 400. Because of this reduction in temporal resolution we excluded 10-day *Janthinobacterium* populations from our analyses.

Signals of Historical Contingency in the Distribution of Extinction Events

We compared, the CV calculated from the observed distribution of extinction events to its null. Under a Poisson distribution, the CV is $\text{CV}_{\text{Pois}} = \sqrt{\lambda}/\lambda = \lambda^{-\frac{1}{2}}$ and observed values of CV greater than this null indicate that extinction events are overdispersed. Using the mean number of extinction events \bar{n}_{ext} as an estimate of λ for all taxon-treatment combinations where at least three replicate populations went extinct, we generated null Poisson distributed extinction events using numpy v1.16.4. Multiple testing correction was performed for the *P*-values using the Benjamini–Hochberg procedure at $\alpha = 0.05$.

Phylogenetic Reconstruction

The 16S rRNA gene of each taxon was amplified via PCR using 8F and 1492R primers and reaction conditions previously described (Lennon et al. 2012). PCR products were purified using the QIAGEN QIAquick PCR Purification Kit and Sanger sequenced at the Indiana Molecular Biology Institute (IMBI) at Indiana University Bloomington (IUB). Sequences were aligned using SILVA Incremental Aligner v1.2.11 (SINA) (Pruesse et al. 2012). Phylogenetic reconstruction was performed using Randomized Axelerated Maximum Likelihood v8.2.11 (RAxML) (Stamatakis 2014) with the General Time Reversible model, gamma distributed rate variation, and bootstrap convergence criteria set to autoMRE. The 16S rRNA sequence of *Prochlorococcus marinus* subsp. marinus str. CCMP1375 (NC_005042) was used as an outgroup. Phylogenetic distance was calculated using the ETE Toolkit (Huerta-Cepas et al. 2016).

Library Construction and Sequencing

Cryopreserved biomass samples were mixed with 1 ml of a 50 mg/ml lysozyme (Dot Scientific DSL38100-10) E-Pure H₂O solution and incubated at 37 °C for 60 min. DNA extractions were performed using Qiagen DNeasy UltraClean Microbial Kits. Libraries were constructed out of 1,337 samples. Approximately 30% of Illumina libraries were constructed in-house with the Nextera DNA Library Preparation Kit (Illumina, FC-121-1030) using a protocol based off of previously published protocols (Picelli et al. 2014; Baym et al. 2015). These libraries were sequenced as paired-end reads on an Illumina HiSeq 2500 at the University of New Hampshire Hubbard Center for Genome Studies. All remaining samples were constructed as Illumina Nextera DNA paired-end 2×150 bp libraries by the Center for Genomics and Bioinformatics at Indiana University and sequenced on a Illumina NextSeq 300. A target depth of 100-fold coverage was set for all libraries, though we ultimately obtained a mean coverage of 195.0 ± 6.67 across samples.

Variant Calling and Analysis

The first 20 bp of all reads were trimmed and all read pairs where at least one pair had a mean Phred quality less than 20 were removed cutadapt v1.9.1 (Martin 2011). Candidate variants were identified using a previously published approach (Good et al. 2017). We provide a brief summary of the method in the supplement, including a high-level overview of the procedure, modifications made to accommodate our experimental design, and key parameter settings. To estimate the frequency of the m th mutation in the p th population for all significant candidates, we used the naive estimator $\hat{f}_{pmt} = A_{pmt}/D_{pmt}$, where A is the coverage of the alternative allele and D is the total depth of coverage. We examined the accumulation of mutations by time t as the sum of derived allele frequencies $M(t) \equiv \sum_m \hat{f}_{mt}$ for each population. The change in $M(t)$ between two timepoints was defined as $\Delta M(t) \equiv \log_{10}[M(t)/M(t-1)]$. The maximum observed frequency of a given mutation over T observations was defined as $f_{max} \equiv \max(\{f(t) : t = 1, \dots, T\})$, where $f(t)$ is the mutation frequency at time t . Nucleotide transitions for all six spectra were counted at all mutations that occurred at 4-fold redundant sites. The ratio of nonsynonymous to synonymous polymorphic mutations pN/pS was corrected by the number of nonsynonymous and synonymous sites within a genome. We examined pN/pS for values of f_{max} that were found across all taxa and treatments.

Principal component analysis was performed on the $n \times p$ matrix \mathbf{X} containing p relativized nucleotide transitions for all n populations using scikit-learn v0.23.1 (Pedregosa et al. 2011). Significant factor loadings were determined by creating permutation arrays $\pi = (\pi_1, \pi_2, \dots, \pi_p)$, where π_j is a permutation of the n populations for the j th transition. This permutation array generates the permuted data matrix \mathbf{X}_{π} , on which PCA was performed and null factor loadings were calculated. We performed 10,000 iterations and P -values were calculated by comparing observed factor loadings to their null distribution. A permutational multivariate ANOVA

(PERMANOVA) was performed using a modified pseudo- F statistic to account for unequal covariance (Anderson et al. 2017). We used a permutation matrix that permuted treatment labels within each taxon, allowing us to control for taxon identity.

Within-Taxon Parallel and Convergent/Divergent Evolution

For the purpose of this analysis, genetic parallelism is defined as the degree that the distribution of observed nonsynonymous mutation counts across genes deviates from the null expectation account based on gene size (i.e., multiplicity). Genes with significant multiplicity were identified using a previously published approach (Good et al. 2017). To briefly summarize, we begin by calculating the multiplicity of a gene of size L_i with n_i mutations of size as $m_i = n_i \cdot \frac{L_i}{\bar{L}}$, where \bar{L} is the mean gene size in the genome. Under our null hypothesis, all genes have the same multiplicity $\bar{m} = n_{tot}/N_{genes}$. We then quantify the net increase of the log-likelihood of the alternative hypothesis relative to the null across the genome as $\Delta \ell = \sum_i n_i \log(m_i/\bar{m})$. Additional details regarding this approach and how significant genes are identified can be found in its original publication (Good et al. 2017) and in the [Supplementary Material](#) online.

Divergence and convergence as the presence or the absence of enriched genes across energy limitation regimes within a given taxon was tested by determining whether the size of the intersection of the set of genes with significant multiplicity across treatments within a taxon was greater than (convergence) or less than (divergence) expected by chance. This can be performed by extending the hypergeometric distribution to the multivariate case, where the probability that m treatments have k intersecting genes is

$$P(|I_1 \cap I_2 \cap \dots \cap I_m| = k) = \frac{\binom{N_{genes}}{k}}{\prod_{i=1}^m \binom{N_{genes}}{|I_i|}} \times \sum_{j=0}^{\min\{|I_1|, |I_2|, \dots, |I_m|\} - k} (-1)^j \binom{N_{genes} - k}{j} \times \prod_{i=1}^m \binom{N_{genes} - j - k}{|I_i| - j - k} \quad (1)$$

where I_l represents the set of genes that are significantly enriched for nonsynonymous mutations in the l th treatment and $|\cdot|$ represents its cardinality. However, given that $N_{genes} \sim \mathcal{O}(10^3)$, it can be prohibitive to calculate and multiply all binomial coefficients inside the sum and the fact that the cardinality varied across treatments prevented us from approximating the sum as a Gaussian distribution. Instead, we simulated the process described by equation (1) to determine whether the Jaccard similarity of gene content between two

treatments ($J(I_i, I_j) = |I_i \cap I_j| / |I_i \cup I_j|$) was greater or less than expected by chance.

Building off of prior results (Shoemaker and Lennon 2020), the degree of divergent versus convergent evolution among enriched genes was determined using the squared Pearson's correlation of relative multiplicities ($\mu_i = m_i / \sum m_i$) for each pair of energy limitation regimes. Null correlation coefficients were calculated by constructing a gene-by-regime mutation count matrix for each pair of energy limitation regimes within each taxon and randomizing combinations of mutation counts constrained on the total number of mutations acquired within each gene across treatments and the number of mutations acquired within each treatment (i.e., the row and column sums of the matrix). This randomization was performed using a Python implementation (Baak et al. 2020) of the ASA159 algorithm (Patefield 1981). Correlation coefficients were calculated from the randomized matrices 10,000 times and the observed coefficients were standardized relative to their respective null distributions (Z_ρ).

Among-Taxa Convergent Evolution

Because few genes are present among all of the taxa we chose, it is difficult to determine whether the same gene acquired more mutations than expected by chance across multiple taxa (i.e., evolutionary convergence among taxa within the same energy limitation regime). To determine whether evolutionarily distant taxa acquired similar mutations, we grouped genes at higher levels of biological organization. To do this, we first inferred the metabolic pathway composition of all taxa using the Metabolic And Physiological potential Evaluator (MAPLE v2.3.1; Arai et al. 2018). MAPLE was run using bi-directional best hit with NCBI BLAST on KEGG genes and modules version 20190318 using all bacteria and archaea in the database. MAPLE output files for the module pathways, signatures, and complexes present in all six taxa were filtered for query coverage values of 100% and merged into a single file for each taxon. A map was created using RefSeq protein IDs and KEGG annotations for each taxon and KEGG annotations were obtained for each gene with significant multiplicity. These KEGG annotations were mapped to the subset of MAPLE modules that passed our filtering criteria, where we finally generate a MAPLE module-by-taxon presence absence matrix. PERMANOVA was performed using the same approach, but with a modified permutation matrix that only permuted treatment labels within a given taxon.

Mapping the enriched genes to a higher level of biological organization required our null statistical model to be more complex than what was described in equation (1). First, not all genes in all genomes are able to be annotated by KEGG. Second, KEGG annotated genes can be part of multiple MAPLE modules. That is, the relationship between the set of KEGG genes and MAPLE modules is not, strictly speaking, a mathematical function. However, because we are only interested in the degree of overlap in MAPLE modules across taxa within a given treatment we do not need to define the map between KEGG and MAPLE annotations. Rather, we can generate a null distribution for the size of intersecting sets of

MAPLE modules by randomly sampling KEGG genes, mapping them to MAPLE pathways, and generating null MAPLE pathway-by-taxon matrices. Because each taxon has a distinct annotation, we set the number of significant genes that also had KEGG annotations as the sample size. Significance of a given intersection set size was established by comparing observed data to the null distributions, where for set intersections with multiple combinations we summed over the $\binom{n}{k}$ possible combinations for k intersections among n total taxa. Significance of the relationship between phylogenetic distance and the Jaccard index of MAPLE modules was assessed by comparing the slope obtained by ordinary least squares regression to a null distribution generated by calculating the OLS slope of the permuted variables for 10,000 iterations. Slope significance of distance–decay relationships was done as previously described (Nekola and White 1999), where the absolute difference in slope values between a given pair of transfer regimes ($\beta_1^{i,j}$) was compared with a null distribution generated by randomly permuting treatment labels and calculating the difference in slopes.

Supplementary Material

Supplementary data are available at *Molecular Biology and Evolution* online.

Acknowledgments

We thank J. Weissman and R. Wolff for providing valuable feedback on an earlier version of this manuscript. We thank M. Behringer, T. Doak, D. A. Drummond, P. Foster, M. Lynch, J. McKinlay, and members of the Lennon lab for their insights at various stages of the project. We thank H. Long for his help in setting up library construction and K. Miller for assisting with sample collection. This work was supported by the US Army Research Office (Grant No. W911NF-14-1-0411). Computing resources for simulations were supported by Lilly Endowment, Inc., through its support for the Indiana University Pervasive Technology Institute, the National Science Foundation under Grant No. CNS-0521433, and Shared University Research grants from IBM, Inc., to Indiana University.

Author Contributions

W.R.S., E.P., M.H.G., and J.T.L. designed the project; W.R.S., E.P., and M.H.G. conducted the experiments and generated the data; W.R.S. performed all statistical analyses; W.R.S., E.P., M.H.G., and J.T.L. wrote the manuscript.

Data Availability

Raw sequence data are available on the NCBI Sequencing Read Archive under BioProject ID PRJNA639414. Reproducible code to perform the analyses in this study is available on GitHub under the repository: https://github.com/MURI2/Phylo_Evol_Timeseries. Processed data and annotations are available on Zenodo under the DOI: 10.5281/zenodo.4517573.

References

- Anderson MJ, Walsh DCI, Clarke KR, Gorley RN, Guerra-Castro E. 2017. Some solutions to the multivariate Behrens–Fisher problem for dissimilarity-based analyses. *Aust N Z J Stat.* 59(1):57–79.
- Aouizerat T, Gelman D, Szitenberg A, Gutman I, Glazer S, Reich E, Schoemann M, Kaplan R, Saragovi A, Hazan R, et al. 2019. Eukaryotic adaptation to years-long starvation resembles that of bacteria. *iScience* 19:545–558.
- Arai W, Taniguchi T, Goto S, Moriya Y, Uehara H, Takemoto K, Ogata H, Takami H. 2018. MAPLE 2.3.0: an improved system for evaluating the functionomes of genomes and metagenomes. *Biosci Biotechnol Biochem.* 82(9):1515–1517.
- Avrani S, Bolotin E, Katz S, Hershberg R. 2017. Rapid genetic adaptation during the first four months of survival under resource exhaustion. *Mol Biol Evol.* 34(7):1758–1769.
- Baak M, Koopman R, Snoek H, Klous S. 2020. A new correlation coefficient between categorical, ordinal and interval variables with Pearson characteristics. *Comput Stat Data Anal.* 152:107043.
- Bacun-Druzina V, Cagalj Z, Gjuracic K. 2007. The growth advantage in stationary-phase (GASP) phenomenon in mixed cultures of enterobacteria. *FEMS Microbiol Lett.* 266(1):119–127.
- Banks MK, Bryers JD. 1990. Cryptic growth within a binary microbial culture. *Appl Microbiol Biotechnol.* 33(5):596–601.
- Baym M, Kryazhinskiy S, Lieberman TD, Chung H, Desai MM, Kishony R. 2015. Inexpensive multiplexed library preparation for megabase-sized genomes. *PLoS One* 10(5):e0128036.
- Behringer MG, Choi BI, Miller SF, Doak TG, Karty JA, Guo W, Lynch M. 2018. *Escherichia coli* cultures maintain stable subpopulation structure during long-term evolution. *Proc Natl Acad Sci USA.* 115(20):E4642–E4650.
- Behringer MG, Ho W-C, Miller SF, Meraz JC, Boyer GF, Lynch M. 2019. Antagonism in Evolutionary Opportunities Results in Non-Monotonic Evolution Across an Environmental Gradient. *bioRxiv*, 865584.
- Blath J, Casanova AG, Kurt N, Wilke-Berenguer M. 2016. A new coalescent for seed-bank models. *Ann Appl Probab.* 26(2):857–891.
- Bradley JA, Amend JP, LaRowe DE. 2018. Necromass as a limited source of energy for microorganisms in marine sediments. *J Geophys Res Biogeosci.* 123(2):577–590.
- Bruno JC, Freitag NE. 2011. *Listeria monocytogenes* adapts to long-term stationary phase survival without compromising bacterial virulence. *FEMS Microbiol Lett.* 323(2):171–179. Publisher: Oxford Academic.
- Chib S, Ali F, Seshasayee ASN. 2017. Genomewide mutational diversity in *Escherichia coli* population evolving in prolonged stationary phase. *mSphere* 2(3):e00059.
- Cvijović I, Good BH, Desai MM. 2018. The effect of strong purifying selection on genetic diversity. *Genetics* 209(4):1235–1278.
- Doebeli M, Ispolatov Y, Simon B. 2017. Towards a mechanistic foundation of evolutionary theory. *eLife.* 6:e23804. Publisher: eLife Sciences Publications, Ltd.
- Finkel SE. 2006. Long-term survival during stationary phase: evolution and the GASP phenotype. *Nat Rev Microbiol.* 4(2):113–120.
- Finkel SE, Kolter R. 1999. Evolution of microbial diversity during prolonged starvation. *Proc Natl Acad Sci USA.* 96(7):4023–4027.
- Gangloff S, Arcangioli B. 2017. DNA repair and mutations during quiescence in yeast. *FEMS Yeast Res.* 17(1):fox002.
- Gangloff S, Achaz G, Francesconi S, Villain A, Miled S, Denis C, Arcangioli B. 2017. Quiescence unveils a novel mutational force in fission yeast. *eLife* 6:e27469.
- Garud NR, Good BH, Hallatschek O, Pollard KS. 2019. Evolutionary dynamics of bacteria in the gut microbiome within and across hosts. *PLoS Biol.* 17(1):e3000102.
- Good BH, Hallatschek O. 2018. Effective models and the search for quantitative principles in microbial evolution. *Curr Opin Microbiol.* 45:203–212.
- Good BH, McDonald MJ, Barrick JE, Lenski RE, Desai MM. 2017. The dynamics of molecular evolution over 60,000 generations. *Nature* 551(7678):45–50.
- Gross J, Avrani S, Katz S, Hilau S, Hershberg R. 2020. Culture volume influences the dynamics of adaptation under long-term stationary phase. *Genome Biol Evol.* 12(12):2292–2301.
- Hahn MW. 2018. Molecular population genetics. Sunderland (MA): Sinauer Associates.
- Helmus RA, Liermann LJ, Brantley SL, Tien M. 2012. Growth advantage in stationary-phase (GASP) phenotype in long-term survival strains of *Geobacter sulfurreducens*. *FEMS Microbiol Ecol.* 79(1):218–228.
- Hobbie JE, Hobbie EA. 2013. Microbes in nature are limited by carbon and energy: the starving-survival lifestyle in soil and consequences for estimating microbial rates. *Front Microbiol.* 4:324.
- Hoehler TM, Jørgensen BB. 2013. Microbial life under extreme energy limitation. *Nat Rev Microbiol.* 11(2):83–94.
- Huerta-Cepas J, Serra F, Bork P. 2016. ETE 3: reconstruction, analysis, and visualization of phylogenomic data. *Mol Biol Evol.* 33(6):1635–1638.
- Katz S, Avrani S, Yavneh M, Hilau S, Gross J, Hershberg R. 2021. Dynamics of adaptation during three years of evolution under long-term stationary phase. *Mol Biol Evol.* 38(7):2778–2790.
- Kram KE, Geiger C, Ismail WM, Lee H, Tang H, Foster PL, Finkel SE. 2017. Adaptation of *Escherichia coli* to long-term serial passage in complex medium: evidence of parallel evolution. *mSystems* 2(2):e00192–16.
- Kram KE, Henderson AL, Finkel SE. 2020. *Escherichia coli* has a unique transcriptional program in long-term stationary phase allowing identification of genes important for survival. *mSystems* 5(4):e00364–20.
- Kunkel TA. 2004. DNA replication fidelity. *J Biol Chem.* 279(17):16895–16898.
- Lacour S, Landini P. 2004. σ -dependent gene expression at the onset of stationary phase in *Escherichia coli*: function of σ -dependent genes and identification of their promoter sequences. *J Bacteriol.* 186(21):7186–7195.
- Lennon JT, Aanderud ZT, Lehmkuhl BK, Schoolmaster DR. 2012. Mapping the niche space of soil microorganisms using taxonomy and traits. *Ecology* 93(8):1867–1879.
- Lever MA, Rogers KL, Lloyd KG, Overmann J, Schink B, Thauer RK, Hoehler TM, Jørgensen BB. 2015. Life under extreme energy limitation: a synthesis of laboratory- and field-based investigations. *FEMS Microbiol Rev.* 39(5):688–728.
- Lynch M, Trickovic B. 2020. A theoretical framework for evolutionary cell biology. *J Mol Biol.* 432(7):1861–1879.
- Lynch M, Field MC, Goodson HV, Malik HS, Pereira-Leal JB, Roos DS, Turkewitz AP, Sazer S. 2014. Evolutionary cell biology: two origins, one objective. *Proc Natl Acad Sci U S A.* 111(48):16990–16994.
- Lynch M, Ackerman MS, Gout J-F, Long H, Sung W, Thomas WK, Foster PL. 2016. Genetic drift, selection and the evolution of the mutation rate. *Nat Rev Genet.* 17(11):704–714.
- Maharjan R, Ferenci T. 2015. Mutational signatures indicative of environmental stress in bacteria. *Mol Biol Evol.* 32(2):380–391.
- Maharjan RP, Ferenci T. 2017. A shifting mutational landscape in 6 nutritional states: stress-induced mutagenesis as a series of distinct stress input–mutation output relationships. *PLoS Biol.* 15(6):e2001477.
- Maharjan RP, Ferenci T. 2018. The impact of growth rate and environmental factors on mutation rates and spectra in *Escherichia coli*. *Environ Microbiol Rep.* 10(6):626–633.
- Maitra A, Dill KA. 2015. Bacterial growth laws reflect the evolutionary importance of energy efficiency. *Proc Natl Acad Sci U S A.* 112(2):406–411.
- Martin M. 2011. Cutadapt removes adapter sequences from high-throughput sequencing reads. *Embnnet J.* 17(1):10–12.
- Martínez-García E, Tormo A, Navarro-Lloréns JM. 2003. Gasp phenotype: presence in enterobacteria and independence of sigma s in its acquisition. *FEMS Microbiol Lett.* 225(2):201–206.
- Morita RY. 1988. Bioavailability of energy and its relationship to growth and starvation survival in nature. *Can J Microbiol.* 34(4):436–441.
- Morita RY. 1993. Bioavailability of energy and the starvation state. In: Kjelleberg S, editor. Starvation in bacteria. Boston (MA): Springer US, p. 1–23.
- Nekola JC, White PS. 1999. The distance decay of similarity in biogeography and ecology. *J Biogeography* 26(4):867–878.

- Orsi WD, Magritsch T, Vargas S, Coskun OK, Vuillemin A, Höhna S, Worheide G, D'Hondt S, Shapiro BJ, Carini P. 2021. Genome evolution in bacteria isolated from million-year-old seafloor sediment. *bioRxiv*, 2020.12.19.423498.
- Patefield WM. 1981. Algorithm as 159: an efficient method of generating random R x C tables with given row and column totals. *J Roy Stat Soc Ser C (Appl Stat.)*, 30(1):91–97.
- Pedregosa F, Varoquaux G, Gramfort A, Michel V, Thirion B, Grisel O, Blondel M, Prettenhofer P, Weiss R, Dubourg V, et al. 2011. Scikit-learn: machine learning in Python. *J Mach Learn Res.* 12:2825–2830.
- Picelli S, Björklund AK, Reinius B, Sagasser S, Winberg G, Sandberg R. 2014. Tn5 transposase and tagmentation procedures for massively scaled sequencing projects. *Genome Res.* 24(12):2033–2040.
- Pruesse E, Peplies J, Glöckner FO. 2012. SINA: accurate high-throughput multiple sequence alignment of ribosomal RNA genes. *Bioinformatics (Bioinformatics)*. 28(14):1823–1829.
- Ratib NR, Seidl F, Ehrenreich IM, Finkel SE. 2021. Evolution in long-term stationary-phase batch culture: emergence of divergent *Escherichia coli* lineages over 1,200 days. *mBio* 12(1):e03337–20.
- Ryan FJ. 1959. Bacterial mutation in a stationary phase and the question of cell turnover. *J Gen Microbiol.* 21(3):530–549.
- Saunmaa S, Tover A, Kasak L, Kivisaar M. 2002. Different spectra of stationary-phase mutations in early-arising versus late-arising mutants of *Pseudomonas putida*: involvement of the DNA repair enzyme MutY and the stationary-phase sigma factor RpoS. *J Bacteriol.* 184(24):6957–6965.
- Sewell D, Laird K, Phillips C. 2011. Growth advantage in stationary phase phenomenon in Gram-positive bacteria. *J Hosp Infect.* 78(1):73–75.
- Shoemaker WR, Lennon JT. 2018. Evolution with a seed bank: the population genetic consequences of microbial dormancy. *Evol Appl.* 11(1):60–75.
- Shoemaker WR, Lennon JT. 2020. Quantifying parallel evolution. *bioRxiv*, 2020.05.13.070953.
- Shoemaker WR, Jones SE, Muscarella ME, Behringer MG, Lehmkühl BK, Lennon JT. 2021. Microbial population dynamics and evolutionary outcomes under extreme energy-limitation. *bioRxiv*, 2021.01.25.428163.
- Stamatakis A. 2014. RAxML version 8: a tool for phylogenetic analysis and post-analysis of large phylogenies. *Bioinformatics (Bioinformatics)* 30(9):1312–1313.
- Zambrano MM, Kolter R. 1996. GASping for life in stationary phase. *Cell* 86(2):181–184.
- Zambrano MM, Siegle DA, Almirón M, Tormo A, Kolter R. 1993. Microbial competition: *Escherichia coli* mutants that take over stationary phase cultures. *Science (New York, N.Y.)*. 259(5102):1757–1760.
- Zinser ER, Kolter R. 2004. *Escherichia coli* evolution during stationary phase. *Res Microbiol.* 155(5):328–336.