



Review

# Calcium Signaling Silencing in Atrial Fibrillation: Implications for Atrial Sodium Homeostasis

Aaron D. Kaplan<sup>1,2</sup>, Humberto C. Joca<sup>1</sup> , Liron Boyman<sup>1</sup> and Maura Greiser<sup>1,\*</sup>

<sup>1</sup> Center for Biomedical Engineering and Technology, Department of Physiology, University of Maryland School of Medicine, Baltimore, MD 21201, USA; akaplan@som.umaryland.edu (A.D.K.); hjoca@som.umaryland.edu (H.C.J.); lboyman@som.umaryland.edu (L.B.)

<sup>2</sup> Division of Cardiovascular Medicine, Department of Medicine, University of Maryland School of Medicine, Baltimore, MD 21201, USA

\* Correspondence: mgreiser@som.umaryland.edu

**Abstract:** Atrial fibrillation (AF) is the most common type of cardiac arrhythmia, affecting more than 33 million people worldwide. Despite important advances in therapy, AF's incidence remains high, and treatment often results in recurrence of the arrhythmia. A better understanding of the cellular and molecular changes that (1) trigger AF and (2) occur after the onset of AF will help to identify novel therapeutic targets. Over the past 20 years, a large body of research has shown that intracellular  $\text{Ca}^{2+}$  handling is dramatically altered in AF. While some of these changes are arrhythmogenic, other changes counteract cellular arrhythmogenic mechanisms (Calcium Signaling Silencing). The intracellular  $\text{Na}^+$  concentration ( $[\text{Na}^+]_i$ ) is a key regulator of intracellular  $\text{Ca}^{2+}$  handling in cardiac myocytes. Despite its importance in the regulation of intracellular  $\text{Ca}^{2+}$  handling, little is known about  $[\text{Na}^+]_i$ , its regulation, and how it might be changed in AF. Previous work suggests that there might be increases in the late component of the atrial  $\text{Na}^+$  current ( $I_{\text{Na,L}}$ ) in AF, suggesting that  $[\text{Na}^+]_i$  levels might be high in AF. Indeed, a pharmacological blockade of  $I_{\text{Na,L}}$  has been suggested as a treatment for AF. Here, we review calcium signaling silencing and changes in intracellular  $\text{Na}^+$  homeostasis during AF. We summarize the proposed arrhythmogenic mechanisms associated with increases in  $I_{\text{Na,L}}$  during AF and discuss the evidence from clinical trials that have tested the pharmacological  $I_{\text{Na,L}}$  blocker ranolazine in the treatment of AF.



**Citation:** Kaplan, A.D.; Joca, H.C.; Boyman, L.; Greiser, M. Calcium Signaling Silencing in Atrial Fibrillation: Implications for Atrial Sodium Homeostasis. *Int. J. Mol. Sci.* **2021**, *22*, 10513. <https://doi.org/10.3390/ijms221910513>

Academic Editors: Narcis Tribulova, Peter Hlivač and Robert Hatala

Received: 22 February 2021

Accepted: 14 September 2021

Published: 29 September 2021

**Publisher's Note:** MDPI stays neutral with regard to jurisdictional claims in published maps and institutional affiliations.



**Copyright:** © 2021 by the authors. Licensee MDPI, Basel, Switzerland. This article is an open access article distributed under the terms and conditions of the Creative Commons Attribution (CC BY) license (<https://creativecommons.org/licenses/by/4.0/>).

**Keywords:** atrial fibrillation; calcium signaling silencing;  $\text{Ca}^{2+}$  handling;  $\text{Na}^+$  concentration; atrial myocytes;  $\text{Na}^+$  currents; ranolazine

## 1. Introduction

Atrial fibrillation (AF) is the most common type of arrhythmia, affecting more than 33 million patients worldwide [1]. AF is a supraventricular arrhythmia with high and irregular atrial activation rates. Clinically, AF is characterized by a multitude of symptoms including fatigue, dyspnea, syncope, hypotension, and tachycardia-induced cardiomyopathy [2]. Further, AF provides a nidus for thromboembolism and stroke and is a serious source of morbidity and mortality [1]. The development of AF is a complex process involving an interplay between electrical and structural remodeling, autonomic imbalance, alterations in  $\text{Ca}^{2+}$  handling, abnormal metabolism, and genetic factors. Treatment for AF is limited by the suboptimal efficacy and toxicities of pharmaceuticals or radiofrequency ablation or surgery, as well as high rates of recurrence [3].

Many vital cell functions are regulated by the intracellular  $\text{Ca}^{2+}$  homeostasis in cardiac myocytes. Intracellular  $\text{Ca}^{2+}$  release initiates contraction, shapes the action potential, regulates transcription, and is involved in a myriad of intracellular signaling cascades [4,5]. AF leads to complex remodeling of the intracellular  $\text{Ca}^{2+}$  homeostasis in atrial myocytes. Changes in intracellular  $\text{Ca}^{2+}$  signaling during AF contribute to a reduction in contractile

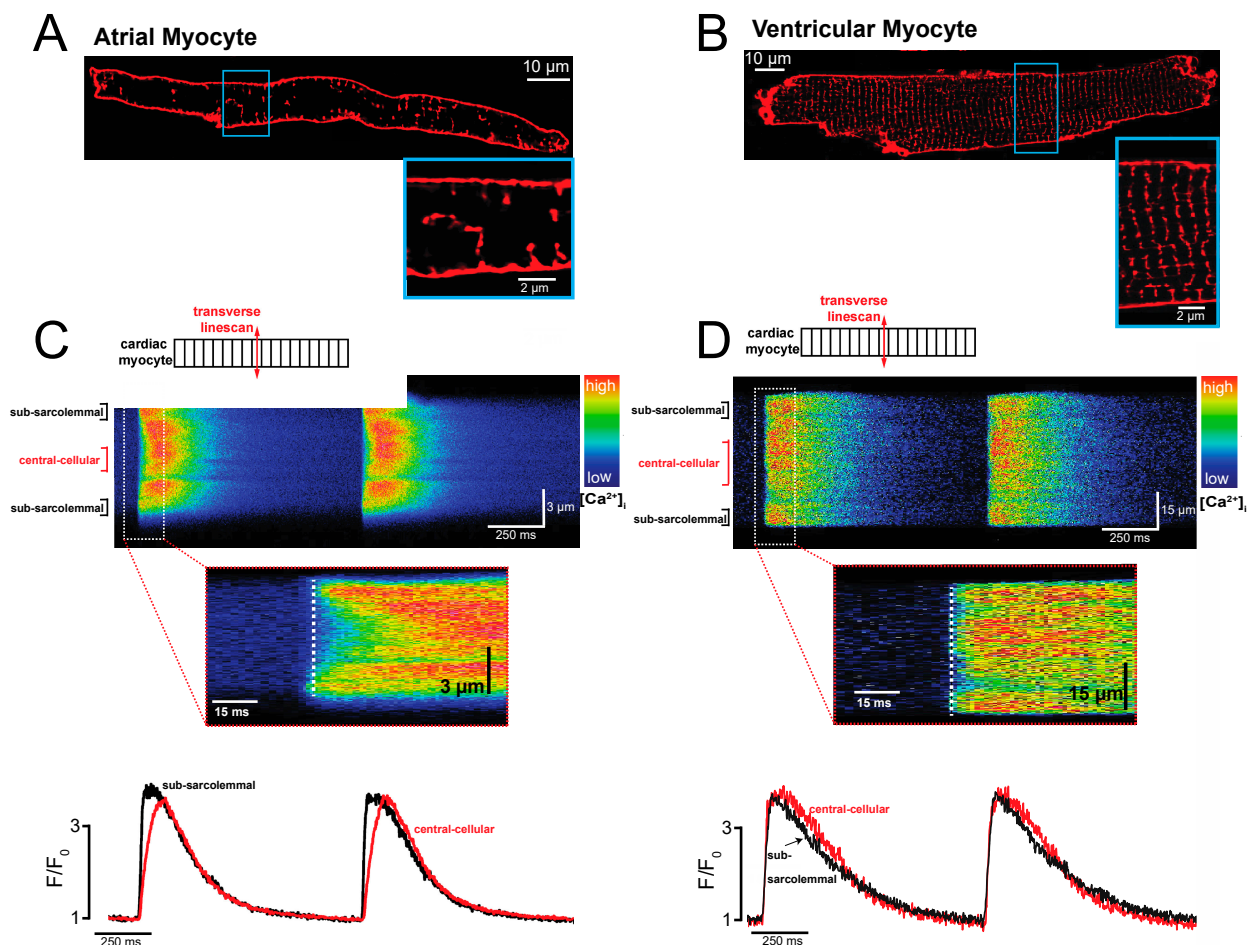
function ('contractile remodeling' [6]) and shortening of the atrial myocyte's action potential (AP) ('electrical remodeling' [7,8]). Whether AF-induced changes in intracellular  $\text{Ca}^{2+}$  signaling also contribute to  $\text{Ca}^{2+}$ -based arrhythmogenesis in AF remains controversial [9–12]. Previous work has identified unstable intracellular  $\text{Ca}^{2+}$  signaling in atrial myocytes from patients with AF that was compatible with intracellular arrhythmogenic mechanisms. At the same time, AF leads to 'calcium signaling silencing', an adaptive mechanism that counteracts intracellular  $\text{Ca}^{2+}$  overload [9–11,13].

In cardiac myocytes, the intracellular  $\text{Na}^+$  concentration ( $[\text{Na}^+]_i$ ) is an important regulator of the intracellular  $\text{Ca}^{2+}$  concentration ( $[\text{Ca}^{2+}]_i$ ) via the sarcolemmal  $\text{Na}^+/\text{Ca}^{2+}$  exchanger (NCX), which exchanges 3  $\text{Na}^+$  for 1  $\text{Ca}^{2+}$  [14–16]. A high  $[\text{Na}^+]_i$  concentration is known as a potent driver of  $\text{Ca}^{2+}$ -based arrhythmogenesis in ventricular heart disease (i.e., heart failure) [17–19]. Studies have indicated that high  $[\text{Na}^+]_i$  concentrations in atrial myocytes might contribute to  $\text{Ca}^{2+}$ -based mechanisms of arrhythmia in AF [20,21]. Specifically, increases in the late component of the cardiac  $\text{Na}^+$  current ( $I_{\text{Na,L}}$ ) have been suggested to contribute to arrhythmogenesis in AF [20]. We and others have comprehensively reviewed changes in intracellular  $\text{Ca}^{2+}$  signaling in AF and how they relate to atrial arrhythmogenesis [9,22,23]. Here, we want to focus on the relationship between intracellular  $\text{Ca}^{2+}$  and  $\text{Na}^+$  homeostasis and its implications for arrhythmogenesis in AF. We briefly discuss altered  $\text{Ca}^{2+}$  handling in AF and calcium signaling silencing but focus on the known changes in intracellular  $\text{Na}^+$  homeostasis in AF and how they might affect atrial arrhythmogenesis. In addition, we summarize experimental and clinical evidence for and against  $I_{\text{Na,L}}$  inhibition as an antiarrhythmic treatment target in AF.

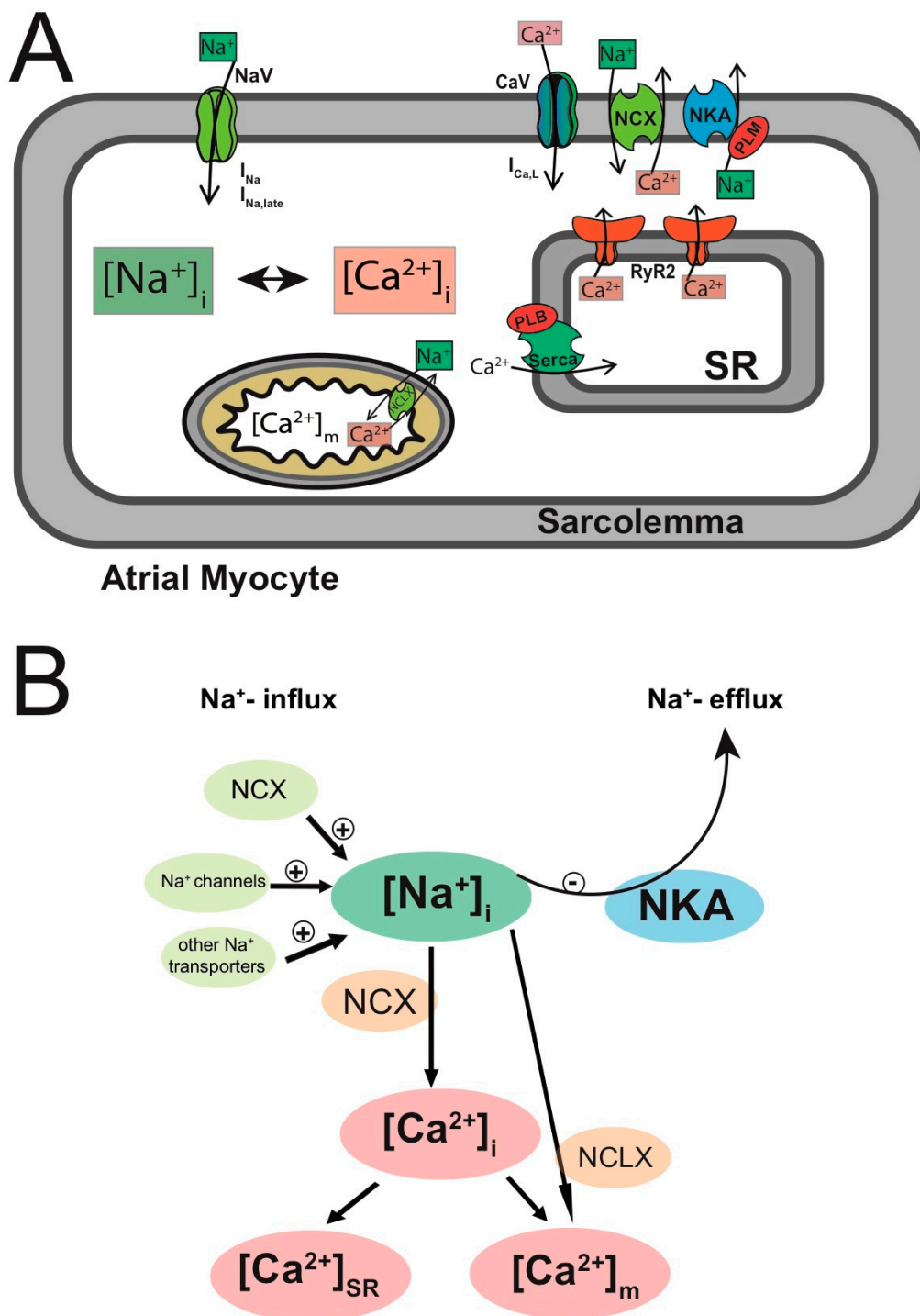
## 2. Atrial-Specific Intracellular $\text{Ca}^{2+}$ Signaling

In cardiac myocytes, membrane depolarization activates voltage-gated L-type  $\text{Ca}^{2+}$  channels [24]. This initiates the influx of a small amount of  $\text{Ca}^{2+}$  into the cell. The small increase in subsarcolemmal  $\text{Ca}^{2+}$  initiates the release of bulk  $\text{Ca}^{2+}$  from the nearby  $\text{Ca}^{2+}$  storage organelle of the cardiac myocyte, the sarcoplasmic reticulum (SR), through its  $\text{Ca}^{2+}$  release channels, the ryanodine receptors type 2 (RyR2) [25–27]. This transient increase in the  $[\text{Ca}^{2+}]_i$  concentration initiates the myocyte's contraction as free  $\text{Ca}^{2+}$  binds to the myofilaments. Myocyte relaxation occurs when  $\text{Ca}^{2+}$  is released from the myofilaments, re-sequestered back into the SR by the SR  $\text{Ca}^{2+}$  ATPase, and simultaneously extruded from the cell by the sarcolemmal NCX [4,27]. This  $\text{Ca}^{2+}$ -induced  $\text{Ca}^{2+}$  release (CICR) is the key mechanism underlying cardiac excitation–contraction coupling [4,25]. While fundamentally similar to ventricular myocytes, CICR in atrial cardiac myocytes is constrained by the atrial specific cyto-architecture [22,28–30]. Structural differences between atrial and ventricular myocytes lead to important functional differences in intracellular  $\text{Ca}^{2+}$  signaling during CICR. Specifically, atrial myocytes have a much less abundant transverse tubular (TT) system than ventricular cells [10,31–34]. TTs are invaginations of the sarcolemma that run perpendicular to the longitudinal axis of a cardiac myocyte and form a network around z-discs [35,36]. We and others have shown previously that atrial cells lack the regular TT pattern found in ventricular myocytes and often form a much less dense and more axial tubular network [10,31–33,37,38]. Figure 1A,B shows this difference between the TT systems in a freshly isolated living atrial and ventricular myocyte, respectively, using the membrane dye Di-8-ANEPPS. In ventricular cardiac myocytes, the sarcolemmal L-type  $\text{Ca}^{2+}$  channels and RyR2s located at the junctional SR are in close proximity throughout the cell due to the regular and dense TT network. This close apposition of L-type  $\text{Ca}^{2+}$  channels with RyR2 along the sarcolemma, the TT, and the junctional SR is called a 'dyad' and ensures near synchronous  $\text{Ca}^{2+}$  release throughout ventricular cardiac myocytes [4,39–41]. Atrial cardiac myocytes lack a regular TT network and therefore possess significantly fewer dyads. In these myocytes,  $\text{Ca}^{2+}$  release 'propagates' into the center of the atrial myocyte when the  $\text{Ca}^{2+}$  released through RyR2 in a dyad at the outer cell membrane activates  $\text{Ca}^{2+}$  release from a neighboring cluster of RyR2 [10,28,31]. This relatively slow process of 'saltatory'  $\text{Ca}^{2+}$  release from a RyR2 cluster to a neighboring

RyR2 cluster results in a significant temporo-spatial delay in  $\text{Ca}^{2+}$  release between the outer membrane (sub-sarcolemmal domain) and the center of the cell in atrial myocytes [28,31,42]. Figure 1C shows a transverse confocal line scan recorded from an atrial myocyte depicting the significant delay between  $\text{Ca}^{2+}$  release at the outer membrane and the center of the myocyte. Figure 1D shows a transverse confocal line scan in a ventricular myocyte illustrating the synchronized intracellular release of bulk  $\text{Ca}^{2+}$  from the SR, the  $\text{Ca}^{2+}$  transient. It is important to note that although  $\text{Ca}^{2+}$  release in atrial myocytes is less synchronous than in ventricular myocytes, the magnitude of the  $\text{Ca}^{2+}$  released into the cytosol during steady state activation is similar in all domains of the cell [10]. Figure 2A gives a schematic overview of CICR in atrial myocytes.



**Figure 1.** Spatiotemporal  $\text{Ca}^{2+}$  release in atrial and ventricular cardiac myocytes. (A) Transverse tubules. Confocal laser scanning image of a freshly isolated living atrial myocyte stained with the membrane dye Di-8-ANEPPS. (B) The same as in (A), but in a freshly isolated living ventricular myocyte. (C) Intracellular  $\text{Ca}^{2+}$  release. Shown is an atrial myocyte loaded with the fluorescent  $\text{Ca}^{2+}$  indicator Fluo-4. A transverse confocal linescan is used to track the spatio-temporal intracellular  $\text{Ca}^{2+}$  release from the subsarcolemmal domain to the center of the cell in an atrial myocyte during external field stimulation. The inset shows the onset of  $\text{Ca}^{2+}$  release at the outer cell membrane in the subsarcolemmal space compared to the central cellular domain. Below are the domain-specific  $\text{Ca}^{2+}$  transients derived from the confocal images shown in the upper panel. (D) The same as in (C) but for a ventricular myocyte.



**Figure 2.** Intracellular  $\text{Na}^+$  and  $\text{Ca}^{2+}$  signaling in atrial myocytes. (A) Schematic depicting intracellular  $\text{Na}^+$  and  $\text{Ca}^{2+}$  signaling in atrial myocytes. (B) Schematic depicting the interdependence of intracellular  $\text{Ca}^{2+}$  and  $\text{Na}^+$  homeostases. See text for details.  $[\text{Na}^+]_i$ : intracellular  $\text{Na}^+$  concentration;  $[\text{Ca}^{2+}]_i$ : intracellular  $\text{Ca}^{2+}$  concentration;  $\text{NaV}$ : voltage-dependent  $\text{Na}^+$  channels;  $I_{\text{Na}}$ :  $\text{Na}^+$  current;  $I_{\text{Na,late}}$ : ‘late’  $\text{Na}^+$  current;  $\text{CaV}$ : L-type  $\text{Ca}^{2+}$  channel ( $\text{CaV}1.2$ );  $I_{\text{Ca,L}}$ : L-type  $\text{Ca}^{2+}$  current;  $\text{NCX}$ :  $\text{Na}^+/\text{Ca}^{2+}$  exchanger;  $I_{\text{NCX}}$ :  $\text{Na}^+/\text{Ca}^{2+}$  exchange current;  $\text{NCLX}$ : mitochondrial  $\text{Na}^+/\text{Ca}^{2+}$  exchanger;  $\text{NKA}$ :  $\text{Na}^+/\text{K}^+$  ATPase;  $I_{\text{NKA}}$ :  $\text{Na}^+/\text{K}^+$  ATPase current;  $\text{PLM}$ : phospholemman;  $\text{RyR2}$ : ryanodine receptor type 2;  $\text{Serca}$ : sarcoplasmic reticulum  $\text{Ca}^{2+}$  ATPase;  $\text{PLB}$ : phospholamban;  $\text{SR}$ : sarcoplasmic reticulum;  $[\text{Ca}^{2+}]_{\text{SR}}$ : SR  $\text{Ca}^{2+}$  concentration;  $[\text{Ca}^{2+}]_m$ : mitochondrial  $\text{Ca}^{2+}$  concentration.

### *Mechanisms of Ca<sup>2+</sup>- and Na<sup>+</sup>-Based Arrhythmogenicity*

When the sensitivity of the RyR2s to be activated by cytosolic Ca<sup>2+</sup> increases (e.g., due to higher [Ca<sup>2+</sup>]<sub>SR</sub> levels or increased RyR2 phosphorylation) the probability for spontaneous elemental Ca<sup>2+</sup> release events (Ca<sup>2+</sup> sparks) and spontaneous Ca<sup>2+</sup> waves to occur, increases [43]. Under these conditions, in addition to the Ca<sup>2+</sup> release triggered by an action potential (AP), there can be Ca<sup>2+</sup> release events that occur ‘spontaneously’ (i.e., not triggered by an AP) during cardiac diastole. When [Ca<sup>2+</sup>]<sub>i</sub> increases following these spontaneous Ca<sup>2+</sup> release events, Ca<sup>2+</sup> is extruded from the cell by the sarcolemmal NCX. Due to the electrogenicity of this transport (3 Na<sup>+</sup> for 1 Ca<sup>2+</sup> ion), these temporary increases in the [Ca<sup>2+</sup>]<sub>i</sub> generate a transient inward current (I<sub>TI</sub>) that depolarizes the membrane potential [44]. These ‘delayed afterdepolarizations’ (DADs), which occur in diastole, can, if the depolarization threshold is reached, trigger an extrasystole and initiate arrhythmias [45–47]. Additionally, Ca<sup>2+</sup>-activated I<sub>TI</sub> can occur during AP repolarization and then contribute to early afterdepolarizations (EADs), which may also trigger extrasystoles. Moreover, during short APs in the presence of high [Ca<sup>2+</sup>]<sub>SR</sub> levels, NCX-mediated EADs can occur during the later parts of phase three of the AP [48].

In cardiac myocytes, [Ca<sup>2+</sup>]<sub>i</sub> and [Na<sup>+</sup>]<sub>i</sub> are tightly linked by the NCX, which uses the Na<sup>+</sup> gradient across the membrane as a driving force to extrude Ca<sup>2+</sup> (Figure 2B depicts the interplay between [Ca<sup>2+</sup>]<sub>i</sub> and [Na<sup>+</sup>]<sub>i</sub> in atrial myocytes) [49]. The NCX extrudes one Ca<sup>2+</sup> ion for three incoming Na<sup>+</sup> ions. In healthy cardiac myocytes during steady-state activation, NCX is the main route of Ca<sup>2+</sup> extrusion [50,51] and Na<sup>+</sup> entry (~60%) [18]. Thus, in cardiac myocytes, [Ca<sup>2+</sup>]<sub>i</sub> and [Na<sup>+</sup>]<sub>i</sub> cannot change independently of each other. In fact, the nexus of intracellular Ca<sup>2+</sup> and Na<sup>+</sup> homeostases is the principle behind cardiac glycoside treatment. Cardiac glycosides (e.g., ouabain or digitalis) block the Na<sup>+</sup>/K<sup>+</sup> ATPase [52], the main route of Na<sup>+</sup> extrusion in cardiac myocytes, which increases the intracellular Na<sup>+</sup> concentration. High [Na<sup>+</sup>]<sub>i</sub> levels reduce the driving force for Na<sup>+</sup> entry through the NCX, which results in an increase in the [Ca<sup>2+</sup>]<sub>i</sub> levels due to less NCX-mediated Ca<sup>2+</sup> extrusion. The positive inotropic effect of cardiac glycosides is due to this intracellular Ca<sup>2+</sup> ‘loading’ of the cardiac myocyte and has been used extensively in the treatment of congestive heart failure [53]. In addition, other interventions targeting the intracellular Na<sup>+</sup> homeostasis in cardiac myocytes have emerged more recently. Specifically, the late component of the atrial Na<sup>+</sup> current (I<sub>Na,L</sub>) has been identified as a treatment target in atrial fibrillation. Evidence suggests that increases in Na<sup>+</sup> entry through higher I<sub>Na,L</sub> levels play a role in atrial arrhythmogenesis [20,21,54,55]. In support of these data, expression in mice of a gain-of-function mutant Nav1.5 channel causing an increased and persistent Na<sup>+</sup> current leads to the development of an atrial myopathy and spontaneous and long-lasting episodes of AF [56]. Despite its importance as a regulator of atrial cardiac myocyte function, in health and during disease, there are to date no comprehensive quantitative studies of atrial [Na<sup>+</sup>]<sub>i</sub> regulation. For example, it is not known how atrial [Na<sup>+</sup>]<sub>i</sub> changes during paroxysmal and persistent atrial fibrillation. More specifically, it is not known how increases in I<sub>Na,L</sub> affect global [Na<sup>+</sup>]<sub>i</sub> or whether there is an adaptive increase in Na<sup>+</sup> extrusion. While many studies have examined how altered [Ca<sup>2+</sup>]<sub>i</sub> and [Ca<sup>2+</sup>]<sub>SR</sub> levels contribute to atrial arrhythmogenesis, the role of [Na<sup>+</sup>]<sub>i</sub> in atrial cardiac arrhythmogenesis remains poorly understood to a large extent due to incomplete understanding of the regulation of atrial [Na<sup>+</sup>]<sub>i</sub>.

### **3. Changes in Na<sup>+</sup> and Ca<sup>2+</sup> Homeostasis during Atrial Fibrillation: Timing Matters**

#### *3.1. Changes in Intracellular Ca<sup>2+</sup> and Na<sup>+</sup> Signaling at the Onset of AF: Paroxysmal Atrial Fibrillation*

Atrial fibrillation is a progressive disorder. Many patients go from paroxysmal to persistent AF and eventually permanent forms of the arrhythmia over the course of months or years [57,58]. Importantly, molecular and cellular changes produced by atrial fibrillation promote its chronification (‘atrial fibrillation begets atrial fibrillation’) [7]. At the same time, the rapid atrial activation rates during AF also induce ‘Ca<sup>2+</sup> signaling silencing’, a complex

adaptive mechanism that counteracts intracellular  $\text{Ca}^{2+}$  overload [10]. In addition, factors that precipitate the initiation of atrial fibrillation can be different from the mechanisms that sustain it.

Atrial fibrillation is characterized by high atrial depolarization rates. After the onset of the arrhythmia, the depolarization rate of the atrial myocytes increases up to tenfold [59]. This leads to a significant increase in  $[\text{Na}^+]_i$  and  $[\text{Ca}^{2+}]_i$  influx through voltage-gated  $\text{Na}^+$  and  $\text{Ca}^{2+}$  channels due to a sharp increase in channel openings over time.  $\text{Ca}^{2+}$  is removed from the cytosol by active transport into the SR by the SR  $\text{Ca}^{2+}$  ATPase and by extrusion from the cell via NCX. High  $[\text{Na}^+]_i$ , however, reduces the driving force for  $\text{Ca}^{2+}$  extrusion via NCX by reducing the transmembrane  $\text{Na}^+$  gradient. This shifts  $\text{Ca}^{2+}$  removal from the cytosol toward re-sequestration into the SR, resulting in a high  $[\text{Ca}^{2+}]_{\text{SR}}$ . A high  $[\text{Ca}^{2+}]_{\text{SR}}$  increases the frequency of arrhythmogenic DADs and EADs. In fact, experimental data from atrial myocytes isolated from patients with paroxysmal AF provide evidence for  $\text{Ca}^{2+}$ -based arrhythmogenesis in paroxysmal AF. In these cells,  $[\text{Ca}^{2+}]_{\text{SR}}$  levels and  $\text{Ca}^{2+}$  re-uptake into the SR were higher than in the control cells from patients in sinus rhythm. In addition, DADs were increased in these cells. Consistent with these findings, the  $\text{Ca}^{2+}$  leak from the SR was increased, as was the open probability of RyR2 [60]. In the same study, no changes in L-type  $\text{Ca}^{2+}$  current density, action potential duration, or NCX protein expression or function, all hallmarks of persistent AF, were detected [60]. This  $\text{Ca}^{2+}$ -based cellular arrhythmogenicity described in atrial myocytes from patients with paroxysmal AF is consistent with the concept of high  $\text{Ca}^{2+}$  influx and cellular maladaptation during intracellular  $\text{Ca}^{2+}$  overload. When AF becomes more permanent, electrical remodeling and ‘ $\text{Ca}^{2+}$  signaling silencing’ occur (e.g., APD shortening and reduction of L-type  $\text{Ca}^{2+}$  current density [7,10,61]), which counteract the ‘ $\text{Ca}^{2+}$  flooding’ of the cell by limiting  $\text{Ca}^{2+}$  entry. For example, a recent study showed a quick reduction in L-type  $\text{Ca}^{2+}$  current density after rapid atrial pacing (7 days) due to a complex feedback loop involving high diastolic nuclear  $[\text{Ca}^{2+}]_i$  levels and reduced levels of microRNA [62].

In addition to the high  $[\text{Ca}^{2+}]_i$  and  $[\text{Ca}^{2+}]_{\text{SR}}$  caused by rapid atrial activation during episodes of AF, certain cardiovascular comorbidities contribute to changes in intracellular  $\text{Ca}^{2+}$  homeostasis, which amplifies the development of  $\text{Ca}^{2+}$ -based arrhythmogenesis. For example, in atrial myocytes isolated from dogs with systolic heart failure,  $\text{Ca}^{2+}$  release from the SR was increased, and arrhythmogenic  $\text{Ca}^{2+}$  waves were more frequent than in control cells [63]. Similarly, in a recent study on pressure overload-induced cardiomyopathy, examination of the atrial myocytes revealed an increased leak of  $\text{Ca}^{2+}$  from the SR and  $\text{Ca}^{2+}$ -based arrhythmogenicity that was exacerbated when the myocytes were stretched [64]. Systolic heart failure (HFrEF) and heart failure with preserved ejection fraction (HFpEF) are risk factors for the development of AF [65]. The  $\text{Ca}^{2+}$ -based arrhythmogenic mechanisms in atrial myocytes that are a product of heart failure (HFrEF or HFpEF) can likely induce an episode of paroxysmal AF. The additional  $\text{Ca}^{2+}$  ‘burden’ that is imposed on the atrial myocyte during AF amplifies the  $\text{Ca}^{2+}$ -based arrhythmogenicity.

In contrast to the many studies addressing intracellular  $\text{Ca}^{2+}$  handling in atrial myocytes, relatively little is known about atrial  $\text{Na}^+$  homeostasis. Specifically, there are no experimental data on the regulation or behavior of  $[\text{Na}^+]_i$  during paroxysmal AF.  $[\text{Na}^+]_i$  levels increase in a rate-dependent manner in atrial and ventricular cardiac myocytes [10,66]. The main route for  $\text{Na}^+$  extrusion from the cardiac myocyte is the  $\text{Na}^+/\text{K}^+$  ATPase (NKA). NKA extrudes three  $\text{Na}^+$  ions for two incoming  $\text{K}^+$  ions while hydrolyzing one ATP molecule [4,67]. The NKA is directly and tightly regulated by  $[\text{Na}^+]_i$  [18,66–68], thus activating and augmenting the rate of  $\text{Na}^+$  extrusion with increasing  $[\text{Na}^+]_i$  concentrations. It is, however, unclear whether atrial  $\text{Na}^+$  extrusion is upregulated during and after the onset of AF, where initially high  $[\text{Na}^+]_i$  levels likely occur, and whether NKA expression or function are changed during paroxysmal atrial fibrillation. One recent study reported that  $I_{\text{Na,L}}$  was increased in atrial myocytes from patients with sleep-disordered breathing, which is associated with atrial arrhythmias [69]. In this study, high levels of  $\text{Ca}^{2+}$ /calmodulin kinase II-mediated phosphorylation of the atrial  $\text{Na}^+$  channel ( $\text{Na}_v1.5$ ) led to an increase in

$I_{Na,L}$  and the frequency of cellular afterdepolarizations. This study suggests a possible role for high  $[Na^+]_i$  concentrations in the onset of AF in this particular subset of patients. We have previously reported that rapid atrial pacing for 5 days leads to reduced atrial  $[Na^+]_i$  in rabbit atrial myocytes, suggesting that the reduction of  $[Na^+]_i$  is part of the adaptive process in response to rapid atrial activation rates [10].

### 3.2. Adaptation of Intracellular $Ca^{2+}$ and $Na^+$ Signaling during Persistent AF

After the onset of AF, molecular and cellular processes that facilitate adaptation to the high depolarization rate are initiated. Over the past 20 years, the adaptation or 'remodeling' of the atrial myocyte's intracellular  $Ca^{2+}$  signaling processes to AF have been studied in many animal models of AF and in atrial myocytes isolated from patients with AF [61,70–76]. Remodeling of intracellular  $Ca^{2+}$  signaling during AF affects processes that limit the amount of  $Ca^{2+}$  that enters the cell and increase  $Ca^{2+}$  removal from the cytosol [28], a process known as 'Ca<sup>2+</sup> signaling silencing' [9,10,77]. The following key features are generally found in atrial myocytes that have adapted to AF.

#### 3.2.1. Reduced L-Type $Ca^{2+}$ Current

The L-type  $Ca^{2+}$  current ( $I_{Ca,L}$ ) density decreases substantially (~60–80%) during AF [71,74,78]. This is partly due to a reduction in protein expression levels of the pore-forming  $\alpha_{1c}$  subunit. Alterations in micro RNAs appear to contribute to this reduction in the protein expression levels of the  $\alpha_{1c}$  subunit in AF [79,80]. In addition, we and others have shown that changes in the regulation of  $I_{Ca,L}$  due to phosphatase or kinase imbalances contribute to low  $I_{Ca,L}$  levels in human AF [75,81].

#### 3.2.2. Small $Ca^{2+}$ Transient

The intracellular  $Ca^{2+}$  transient (CaT) amplitude decreases significantly during AF [10,76]. This reduces the amount of  $Ca^{2+}$  that is available for binding to the myofilaments. The reduced CaT is therefore a significant contributor to the reduction in atrial myocyte contractility during AF [6,10,76]. We have previously shown that the reduced CaT amplitude during AF is part of the 'calcium signaling silencing' process that is triggered by rapid depolarization rates [9,10]. Calcium signaling silencing, which is part of the remodeling process, mitigates the effects of high  $[Ca^{2+}]_i$  levels. Laser scanning confocal microscopy with a high spatiotemporal resolution revealed regional imbalances of CIRC during AF. While CaT amplitudes at the outer membrane in the subsarcolemmal areas of atrial myocytes were unaltered during AF, the CaT amplitude in the center of the myocyte was severely blunted, resulting in a significant reduction in the whole cell's CaT [10].

#### 3.2.3. Upregulated $Na^+/Ca^{2+}$ Exchanger

The protein expression levels of NCX1 are increased during AF [76,82]. Thus, for a given cytosolic  $[Ca^{2+}]_i$  concentration, the depolarizing current carried by NCX1 ( $I_{NCX}$ ) is increased during AF. When spontaneous release of  $Ca^{2+}$  from the SR occurs, the resulting higher  $I_{TI}$  increases the degree of membrane depolarization in AF atrial myocytes compared with healthy atrial myocytes [76].

#### 3.2.4. Remodeling of the RyR2 Macro-Complex

Most studies showed no changes in  $[Ca^{2+}]_{SR}$  levels during AF [10,75,76], although the RyR2 complex underwent complex posttranslational modifications [60,82–84]. The best characterized changes are in the phosphorylation levels of two important RyR2 phosphorylation sites: Ser2808, a predominant protein kinase A (PKA) phosphorylation site, and Ser2815, a predominant  $Ca^{2+}$ /calmodulin kinase II (CaMKII) phosphorylation site. Elevated phosphorylation levels at Ser2808 and Ser2815 are consistently found in AF [60,82–84]. Additionally, the activation of CaMKII by oxidative stress (Oxidized CaMKII) appears to contribute to increased RyR2 phosphorylation at Ser2815. The oxidized CaMKII level was increased in AF in patients [85] and was critical to AF progression in

a diabetic mouse model [86]. Phosphorylation of RyR2 increases the sensitivity of the receptors to being activated by cytosolic  $\text{Ca}^{2+}$  and their open probability ( $p_o$ ) [87,88]. These changes in RyR2  $\text{Ca}^{2+}$  sensitivity increase the propensity for the spontaneous diastolic release of  $\text{Ca}^{2+}$  from the SR independent of cell depolarization. The spontaneous release of  $\text{Ca}^{2+}$  from one or more clusters of neighboring RyR2 can further activate the release of  $\text{Ca}^{2+}$  from more adjacent RyR2 clusters, leading to a propagating intracellular  $\text{Ca}^{2+}$  wave. These  $\text{Ca}^{2+}$  waves activate NCX-mediated  $I_{\text{Ti}}$  [44]. If the membrane depolarization threshold is reached, an 'extra' action potential can be triggered and lead to arrhythmia initiation. While this is a well-documented mechanism in ventricular arrhythmogenesis [47], it remains controversial if—and under which circumstances—arrhythmogenic spontaneous  $\text{Ca}^{2+}$  release occurs during AF. Importantly, it remains unclear whether arrhythmogenic  $\text{Ca}^{2+}$  release contributes to AF initiation and maintenance in vivo.

### 3.2.5. Remodeling of $[\text{Na}^+]_i$ in Persistent AF

As outlined above,  $[\text{Ca}^{2+}]_i$  and  $[\text{Na}^+]_i$  cannot change independently of each other in cardiac myocytes [4,14]. While changes in intracellular  $\text{Ca}^{2+}$  signaling in AF have been studied in great detail, the regulation of intracellular  $\text{Na}^+$  homeostasis in healthy atrial myocytes and during AF remains poorly understood. Specifically, it is unclear how atrial remodeling in long-lasting AF affects intracellular  $\text{Na}^+$  homeostasis. Previous work in ventricular myocytes showed that substantive changes in  $[\text{Na}^+]_i$  occur during ventricular cardiomyopathies and, specifically, that these changes are significant contributors to arrhythmogenic mechanisms in these cells. For example, in heart failure and cardiac hypertrophy, the  $[\text{Na}^+]_i$  concentration is significantly increased in ventricular cardiac myocytes [17,89]. The  $[\text{Na}^+]_i$  elevation under these pathological conditions seems to be related to an increase in the  $\text{Na}^+$  influx through voltage-gated  $\text{Na}^+$  channels [17] and reduced extrusion of  $\text{Na}^+$  by NKA [89]. In contrast to these well-documented changes in intracellular  $\text{Na}^+$  homeostasis in ventricular cardiomyopathies, little is known about changes in  $[\text{Na}^+]_i$  during atrial fibrillation. Here, we summarize and discuss what is currently known and unknown about the adaptation of intracellular  $\text{Na}^+$  homeostasis during persistent AF and how it may relate to the atrial remodeling process and the chronification of AF.

**$\text{Na}^+$  influx:** In atrial myocytes isolated from patients with atrial fibrillation, one study found that the late component of the atrial  $\text{Na}^+$  current ( $I_{\text{Na,L}}$ ) was increased, suggesting that this would lead to an increase in  $[\text{Na}^+]_i$  [20,21]. A more recent study showed that  $I_{\text{Na,L}}$  in atrial myocytes from patients with AF was not different from control cells when voltage clamp measurements were performed at 37 °C [90]. An earlier study found no changes in the peak  $\text{Na}^+$  current ( $I_{\text{Na}}$ ) in atrial myocytes from patients with atrial fibrillation [91], while a study in a canine model of AF found a significant reduction in  $I_{\text{Na}}$  after 42 days of rapid atrial pacing [92]. Due to the paucity of data and the conflicting results for  $\text{Na}^+$  influx during persistent AF, it is unclear whether  $\text{Na}^+$  influx is altered during the chronification of atrial fibrillation.

**$\text{Na}^+$  efflux:** One study examining the  $\text{K}^+$  dependence of the NKA current ( $I_{\text{NKA}}$ ) did not find any changes in atrial myocytes from AF patients compared to control cells. However, the  $\text{Na}^+$  dependence of  $I_{\text{NKA}}$  was not examined [93]. Experiments in this study were performed at supra-physiological intracellular  $\text{Na}^+$  concentrations (100 mM), where differences in  $I_{\text{NKA}}$  due to altered NKA regulation were unlikely to be detected.

Importantly,  $[\text{Na}^+]_i$  has not been measured in human AF. We performed the first quantitative measurements of  $[\text{Na}^+]_i$  in healthy atrial myocytes and found atrial  $[\text{Na}^+]_i$  in rabbit and mouse atrial myocytes to be significantly lower than in ventricular myocytes [10,94]. It is currently unknown why  $[\text{Na}^+]_i$  in healthy atrial myocytes is several mM (2–4 mM) lower than in healthy ventricular cardiac myocytes. The substantial difference between atrial and ventricular  $[\text{Na}^+]_i$  suggests important differences in intracellular  $\text{Na}^+$  homeostasis between these two cell types. Interestingly, we also previously reported that after short-term (5 days) rapid atrial pacing, the  $[\text{Na}^+]_i$  in rabbit atrial myocytes was significantly lower than in healthy atrial myocytes [10]. Thus, lowering of atrial  $[\text{Na}^+]_i$  appears to be part



of adaptive ‘calcium signaling silencing’ in response to rapid atrial activation rates. Our data also indicate that the intracellular  $\text{Na}^+$  homeostasis in atrial cells adapts differently than in ventricular myocytes when a cardiac myocyte reaches steady state, where  $\text{Na}^+$  influx matches the  $\text{Na}^+$  efflux [14,18]. For the atrial  $[\text{Na}^+]_i$  level to decrease in response to rapid atrial activation, either less  $\text{Na}^+$  enters the cell or more  $\text{Na}^+$  is extruded from the cell. In large mammals, during steady state stimulation, the majority of  $\text{Na}^+$  enters the cell through NCX1 (~60%), and a lesser amount enters through voltage-gated  $\text{Na}^+$  channels (~22%).  $\text{Na}^+$  is extruded by the NKA (see above). Further quantitative evaluation of atrial  $\text{Na}^+$  influx and efflux is needed to advance our understanding of the important interplay between intracellular  $\text{Na}^+$  and  $\text{Ca}^{2+}$  homeostasis and its remodeling during AF.

#### 4. $I_{\text{Na,L}}$ as an Antiarrhythmic Target in Atrial Arrhythmias

During the upstroke of the AP in cardiac myocytes, voltage-gated  $\text{Na}^+$  channels ( $\text{Na}_v$ ) open briefly before they inactivate and enter a non-conductive state [19]. While the majority of cardiac  $\text{Na}_v$  remain inactivated, a small fraction of channels either does not remain inactivated, which allows them to become reactivated, or they remain open during AP repolarization [95]. This late component of the sodium current ( $I_{\text{Na,L}}$ ) is orders of magnitude smaller than the peak  $I_{\text{Na}}$  [20,90,95,96]. Since it was reported that the late component of  $I_{\text{Na}}$  was increased in atrial myocytes from patients with atrial fibrillation, modulation of  $I_{\text{Na,L}}$  as an anti-arrhythmic strategy in AF has been studied (Table 1) [20].

Increases in  $I_{\text{Na,L}}$  can lead to triggered activity in atrial myocytes. It is thought that reducing  $I_{\text{Na,L}}$  in patients with AF, thereby reducing the atrial  $[\text{Na}^+]_i$ , could prevent  $\text{Ca}^{2+}$ -dependent atrial arrhythmogenesis. Ranolazine is a piperazine derivative that decreases  $I_{\text{Na,L}}$  through cardiac  $\text{Na}_{v1.5}$  channels [20,97]. Experimental studies have investigated the role of  $I_{\text{Na}}$ ,  $I_{\text{Na,L}}$ , and their modulation in atrial arrhythmogenesis.  $I_{\text{Na,L}}$  was increased in guinea pig atrial myocytes by administration of sea anemone toxin II (ATXII), a compound known to delay the inactivation of  $I_{\text{Na}}$ . In cells treated with ATXII, current clamp recordings showed a significant increase in the diastolic membrane potential, resulting in membrane depolarization. This ‘triggered’ activity was attenuated by the blocking of  $I_{\text{Na}}$  with tetrodotoxin (TTX) and ranolazine, which blocks  $I_{\text{Na,L}}$  with 40-fold higher potency than the peak  $I_{\text{Na}}$  in ventricular myocytes [98–100].

In a mouse model of an  $I_{\text{Na}}$  channelopathy, LQT3 ( $\Delta\text{KPQ}$ ), an increase in  $I_{\text{Na,L}}$  led to atrial AP prolongation and a propensity toward EADs [101]. It should be noted that prolongation of the action potentials was most prominent at slow pacing frequencies, and EADs were only observed at 0.5 Hz, which is sub-physiologic for mice, and they were never observed at higher stimulation frequencies. When SCNA5 variants from patients with long QT syndrome and early onset AF were expressed in HEK293 cells, voltage clamp experiments showed no changes in peak  $I_{\text{Na}}$  but revealed changes in channel activation and inactivation, leading to increased sustained current [102]. In isolated canine myocytes, ranolazine induced a significant prolongation of the AP only in atrial (and not in ventricular) myocytes [103]. Similarly, i.v. administration of ranolazine in anesthetized pigs resulted in a more pronounced prolongation of the effective refractory period (ERP) in the atria compared with the ventricles [104]. In a canine atrial wedge preparation, ranolazine was found to have a synergistic effect with dronedarone, a  $\text{K}^+$  channel blocker with effects on multiple other ion channels, in preventing the induction of AF (90% of samples) when compared with either dronedarone (17% of samples) or ranolazine (29% of samples) alone [105].

Another inhibitor of  $I_{\text{Na,L}}$ , GS-458967, was developed more recently [106]. GS-458967 showed less inhibition of  $I_{\text{Kr}}$  than ranolazine [106]. In canine pulmonary vein and superior vena cava sleeve preparations, GS-458967 reduced DADs and triggered activity that was induced by isoproterenol, high calcium, or their combination [107]. GS-458967 reduced the canine atrial AP duration, decreased the AP upstroke velocity, and lengthened the ERP in a dose-dependent manner. These changes were not observed in the ventricular preparations [108]. In a porcine model of AF induced by acetylcholine and epinephrine co-

administration, GS-458967 reduced AF inducibility [109]. Taken together, the experimental data suggest that when  $I_{Na,L}$  is significantly increased in healthy atrial myocytes, cellular arrhythmogenic phenomena (DADs and EADs) occur. Thus, it appears that increased  $I_{Na,L}$  might lead to atrial arrhythmogenicity, making  $I_{Na,L}$  an interesting target for anti-arrhythmic intervention in the atria. However, it should be noted that ATXII leads to 5–10-fold higher increases in  $I_{Na,L}$  than those reported for  $I_{Na,L}$  during AF [110]. In addition, a hallmark of electrical remodeling during AF is the significant shortening of the atrial AP [7,111]. This means that the effect of a moderate increase in  $I_{Na,L}$ , which might occur during AF, is likely to be curtailed by the shortening of the AP. In order to better evaluate the impact of changes in  $I_{Na,L}$  on atrial arrhythmogenicity during AF, it is crucial to quantitatively evaluate the  $[Na^+]_i$  and  $Na^+$  efflux.

Furthermore, experimental studies showed that the mechanism of action of ranolazine is not limited to  $I_{Na,L}$  and in fact inhibits several key ionic currents ( $I_{Na}$ ,  $I_{Kr}$ ,  $I_{Ca}$ ,  $I_{NCX}$ , and  $I_{KS}$ ) without changes in  $I_{to}$  and  $I_{K1}$  [97]. Ranolazine has also been found to inhibit TASK-1, an atrial specific potassium channel that is upregulated in AF [112]. Given that AF at the cellular level is defined by alteration in the expression and function of key ion currents, the observed effects of ranolazine can be mediated by its effects on other currents. Ranolazine's reduction of the upstroke velocity of the AP is mediated through its effect on the peak  $I_{Na}$ . Inhibition of the peak  $I_{Na}$  is the proposed mechanism in other anti-arrhythmic agents used in the treatment of atrial fibrillation to maintain sinus rhythm, such as flecainide or propafenone [2]. Sotalol and dofetilide are two anti-arrhythmic agents used in the treatment of atrial fibrillation that exert their effect through the inhibition of  $I_{Kr}$  [113]. Ranolazine and these antiarrhythmic agents had similar potency for  $I_{Kr}$  in experimental studies [97]. The application of heterologous ion channel expression systems, such as human-induced pluripotent stem cell cardiomyocytes, in combination with novel computational methods may prove useful in further elucidating the multi ion channel blocking properties of ranolazine [114,115].

#### *Results of Clinical Trials Using Ranolazine in AF Treatment*

Ranolazine, which had been initially indicated for the treatment of refractory angina [116], has been proposed as a novel treatment for AF. It has been suggested that the mechanism of action for ranolazine in the treatment of AF is the inhibition of  $I_{Na,L}$ . As we discussed above, the role an increased atrial  $I_{Na,L}$  may play in the initiation or maintenance of AF remains controversial [20,21,90] and understudied. In addition, ranolazine efficiently inhibits many other key ion currents in cardiac myocytes, including  $I_{Kr}$ ,  $I_{Ca}$ , and  $I_{Na}$  [97]. Thus, positive results from the utilization of ranolazine in the treatment of AF maybe unrelated to  $I_{Na,L}$ .

Several studies showed that ranolazine augmented the anti-arrhythmic effect of amiodarone [117–124], an anti-arrhythmic agent commonly used in the treatment of AF [125]. These studies demonstrate that ranolazine effectively potentiates amiodarone in both the pharmacologic conversion of AF to a sinus rhythm and as a rhythm control strategy (Table 1). Amiodarone acts to prolong the action potential by inhibiting multiple currents; thus, ranolazine may act in a synergistic manner with amiodarone. Interestingly, despite the fact that ranolazine has been shown to prolong the QT interval, concomitant use with amiodarone was not shown to be pro-arrhythmic. In general, ranolazine was not shown to have significant adverse effects when compared with the control arm of studies, either with amiodarone alone or a placebo (Table 1).

**Table 1.** Clinical studies testing ranolazine for AF treatment.

Study	Population Studied (N, Age, %Male)	Study Design	AF Detection Method, Surveillance Duration	Results
Murdock 2008 [126] #	Recurrent AF with failure to AF ablation or anti-arrhythmic behavior 7, 67 ± 9, 57%	Oral RN (500–1000 mg/BID) after stopping all other anti-arrhythmic therapy	Not reported	<ul style="list-style-type: none"> <li>• AF conversion: 5/7</li> <li>• AF recurrence: 4/7 remained in NSR</li> <li>• 1 AF event at 3 months and 6 months</li> </ul>
Miles 2011 [127] <sup>a</sup>	Post CABG AF 182, 66.7 ± 9.3, 70% (intervention arm) 211 64.9 ± 10.9, 77% (control arm)	Intervention arm: 1500 mg RN before surgery, 1000 mg RN BID post-op for 10–14 days Control arm: 400 mg amiodarone before surgery, 200 mg amiodarone BID post-op 10–14 days Intervention arm: 1500 mg RN daily and IV amiodarone	Continuous ECG monitoring throughout hospitalization	<ul style="list-style-type: none"> <li>• Incidence of POAF: AF 26.5% in control group vs. 17.5% in RN-treated group (<math>p = 0.035</math>)</li> </ul>
Fragakis 2012 [117] <sup>c</sup>	New onset AF (<48 h from diagnosis) 25, 62 ± 8, 60% (intervention arm) 26, 64 ± 7, 69% (control arm)	Control arm: IV amiodarone (loading dose: 5 mg/kg in 1 h followed by 50 mg/hour for 24 h or until cardioversion)	Continuous ECG in CCU for 24 h followed by >1 day inpatient	<ul style="list-style-type: none"> <li>• Conversion rate to NSR: 65% in control vs. 88% in RN-treated group (<math>p = 0.056</math>)</li> <li>• Time to conversion: control 14.6 ± 5.3 h vs. RN-treated 9.8 ± 4.1 h (<math>p &lt; 0.001</math>)</li> </ul>
Murdock 2012 [128] #	Recurrent AF with electro-cardioversion failure 25, 62 ± 11, 76%	2000 mg RN given after failed electrocardioversion attempt, repeat electrocardioversion after 3–4 h of administration	Not reported	<ul style="list-style-type: none"> <li>• AF conversion: 17/25</li> <li>• 3 patients spontaneously converted before the second attempt at EC within 4 h of ranolazine</li> </ul>
Tagarakis 2013 [129] <sup>c</sup>	Post-CABG AF 34, NA, NA (intervention arm) 68, NA, NA (control arm)	Intervention arm: 375 mg RN BID 3 days prior to operation until discharge Control arm: usual care	Continuous ECG monitoring for first 24 h followed by ECG monitoring every 4 h until discharge	<ul style="list-style-type: none"> <li>• Incidence of POAF: control 30.8% vs. RN-treated 8.8% (<math>p &lt; 0.001</math>)</li> </ul>
Koskinas 2014 [118] <sup>c</sup>	New onset AF (<48 h from diagnosis) 61, 66 ± 11, 41% (intervention arm) 60, 64 ± 9, 48% (control arm)	Intervention arm: 1500 mg RN daily and IV amiodarone Control: IV amiodarone (loading dose: 5 mg/kg in 1 h followed by 50 mg/h)	Continuous ECG monitoring in the CCU for 24 h	<ul style="list-style-type: none"> <li>• Conversion rate at 12 h: control 32% vs. RN-treated 52% (<math>p = 0.021</math>)</li> <li>• Conversion rate at 24 h: control 70% vs. RN-treated 87% (<math>p = 0.024</math>)</li> <li>• Time to conversion: control 13.3 ± 4.1 h vs. RN-treated 10.2 ± 3.3 h (<math>p &lt; 0.001</math>)</li> <li>• Modest QT prolongation in both the groups, no serious adverse reactions, and no pro-arrhythmic events.</li> </ul>

Table 1. Cont.

Study	Population Studied (N, Age, %Male)	Study Design	AF Detection Method, Surveillance Duration	Results
Simopulos 2014 [119] <sup>c</sup>	Post-CABG AF 20, 69 ± 7, 70% (intervention arm) 21, 67 ± 8, 60% (control arm)	Intervention arm: 500 mg RN (loading dose) followed by 375 mg RN BID and IV amiodarone  Control arm: IV amiodarone: 300 mg in 30 min followed by 750 mg in 24 h, then 200 mg BID for one week and then 200 mg daily for 1 week	Continuous ECG monitoring for first 24 h followed by ECG every 4 h, monitoring until discharge	<ul style="list-style-type: none"> <li>Time to conversion to NSR: control 37.2 ± 3.9 h vs. RN-treated 19.6 ± 3.2 h (<math>p &lt; 0.001</math>)</li> <li>AF burden—episodes detected on continuous ECG in first 7 days: control 55 (1.7%) vs. RN-treated 75 (2.4%) (<math>p = 0.08</math>)</li> </ul>
Scirica 2015 (MERLIN) [130] <sup>c</sup>	Patients hospitalized for NSTEMI 3162, 17% >75 yrs, 66.8% (intervention arm) 3189, 18% >75 yrs, 63.7% (control arm)	Intervention arm: IV 200 mg RN with 80 mg/h infusion for 12–96 h, then 1000 mg oral RN BID  Control arm: placebo plus standard medical intervention	Continuous ECG monitoring for 7 days  Median clinical follow-up at 12 months	<ul style="list-style-type: none"> <li>New onset AF:</li> <li>Clinically insignificant: control 7 vs. RN-treated 5</li> <li>Paroxysmal: control 48 vs. RN-treated 18</li> <li>Chronic: control 20 vs. RN-treated 28 (<math>p &lt; 0.01</math>)</li> <li>One-year AF events: control 4.1% vs. RN-treated 2.9% (<math>p = 0.01</math>)</li> </ul>
De Ferrari 2015 (RAFFAELLO) [131] <sup>c</sup>	Persistent AF, 2 h after successful cardioversion 65, 66.9 ± 11.8, 70.8% (375 mg RN) 60, 65.5 ± 8.5, 85% (500 mg RN) 58, 63.6 ± 11.3, 79.3 (750 mg RN) 55, 65.2 ± 9.5, 74.5% (control arm)	Intervention arm: either oral 375 mg BID, 500 mg BID, or 750 mg BID ranolazine  Control arm: placebo	Transtelephonic electrocardiogram for 16 weeks and 12 lead ECG at 1 week, 2 months, and 4 months	<ul style="list-style-type: none"> <li>AF recurrence: control 56.4% vs. 375 mg (56.9%) vs. 500 mg (41.7%) vs. 750 mg (39.7%) AF in higher dose vs. control (<math>p = 0.053</math>)</li> </ul>
Tsanaxidis 2015 [120] <sup>*c</sup>	New onset AF 36, 67 ± 10, 25% (intervention arm) 29, 62 ± 11, 55% (control arm)	Intervention arm: 1000 mg RN once + IV amiodarone  Control arm: IV amiodarone (loading dose: 5 mg/kg in 1 h followed by 50 mg/h)	Not reported	<ul style="list-style-type: none"> <li>Time to conversion to NSR: control 24.4 ± 4.1 vs. 8.1 ± 2.2</li> </ul>
Bekeith 2015 [132] <sup>*b</sup>	POAF 27, NA, NA (intervention arm) 27, NA, NA (control arm)	Intervention arm: 1000 mg RN BID for 48 h prior to surgery and 2 weeks post-op  Control: placebo	ECG monitoring in patient followed by holter monitor 2 weeks post-discharge	<ul style="list-style-type: none"> <li>Incidence of AF: control 8 (30%) vs. RN-treated 5 (19%) (<math>p = 0.530</math>)</li> </ul>

Table 1. Cont.

Study	Population Studied (N, Age, %Male)	Study Design	AF Detection Method, Surveillance Duration	Results
Hammond 2015 [133] <sup>a</sup>	POAF 69, 59.7 ± 10.8, 68.1% (intervention arm) 136, 62.2 ± 11.8, 56.6% (control arm)	Intervention arm: 1000 mg RN BID starting on day of surgery for 7 days or until discharge  Control arm: standard therapy	Not reported	<ul style="list-style-type: none"> <li>POAF occurrence: 41.9% vs. 10.1% (<math>p &lt; 0.0001</math>)</li> </ul>
Reiffel 2015 (HARMONY) [121] <sup>a</sup>	Paroxysmal AF with recent dual-chamber pacemaker placement 26, 70 ± 10.8, 39% (intervention arm) 52, 73.5 ± 11.5, 44.5% (control arm)	Intervention arm: 750 mg RN BID, dronedarone, or both  Control: placebo	Dual-chamber pacemaker, 4-week run-in period followed by a 12-week treatment period	<ul style="list-style-type: none"> <li>AF burden: % difference vs. placebo dronedarone 9% (<math>p = 0.78</math>), RN −20% (<math>p = 0.49</math>), RN + 150 mg dronedarone −43% (<math>p = 0.072</math>), RN + 225 mg dronedarone (<math>p = 0.008</math>)</li> </ul>
Tsanaxidis 2017 [122]	New onset AF (<48 h from onset) 92, 70 ± 10, 41% (intervention arm) 81, 67 ± 11, 50.6% (control arm)	Intervention arm: 1000 mg RN once and IV amiodarone  Control arm: IV amiodarone (loading dose: 5 mg/kg in 1 h followed by 50 mg/h)	Not reported	<ul style="list-style-type: none"> <li>Time to conversion: control 19.4 ± 4.4 vs. RN-treated 8.6 ± 2.8 (<math>p &lt; 0.0001</math>)</li> <li>Conversion rate at 24 h: control 58% vs. RN-treated 98% (<math>p &lt; 0.001</math>)</li> </ul>
Simopoulos 2018 [123]	POAF in patients with HFrEF vs. HFpEF 511, 65 ± 9, 87% (HFrEF arm) 301, 66 ± 10, 85% (HFpEF arm)	Intervention arm: 500 mg RN followed by 375 mg RN after 6 h and 375 mg RN BID thereafter and amiodarone  Control arm: IV amiodarone (300 mg in first 30 min + 1125 mg over next 36 h)	Not reported	<ul style="list-style-type: none"> <li>Time to conversion:</li> <li>HFrEF: control 24.3 ± 4.6 vs. RN-treated 10.4 ± 4.5</li> <li>HFpEF: control 26.8 ± 2.8 vs. RN-treated 12.2 ± 1.1</li> </ul>
Guerra 2017 [134]				<ul style="list-style-type: none"> <li>AF event (new onset or recurrence): OR 0.47; 95% CI 0.29–0.76 (<math>p = 0.003</math>)</li> <li>POAF: OR 0.29; 95% CI 0.11–0.77 (<math>p = 0.03</math>)</li> <li>Non-operative AF: OR 0.70; 95% CI 0.54–0.83 (<math>p = 0.005</math>)</li> <li>Successful cardioversion vs. amiodarone alone: OR 3.11; 95% CI 1.42–6.79 (<math>p = 0.004</math>)</li> <li>Time to cardioversion: SMD −2.83 h; 95% CI from −4.69 to −0.97 h (<math>p &lt; 0.001</math>)</li> </ul>

Table 1. Cont.

Study	Population Studied (N, Age, %Male)	Study Design	AF Detection Method, Surveillance Duration	Results
Gong 2017 [135]				<ul style="list-style-type: none"> <li>• AF event: RR 0.67, 95% CI 0.62–0.87 (<math>p = 0.002</math>)</li> <li>• Successful cardioversion vs. amiodarone alone: RR 1.23, 95% CI 1.08–1.40 (<math>p = 0.002</math>)</li> <li>• Time to cardioversion: WMD <math>-10.38</math> h; 95% CI from <math>-18.18</math> to <math>-2.57</math> h (<math>p &lt; 0.009</math>)</li> </ul>

AF = atrial fibrillation, BID = twice daily, CABG = coronary artery bypass surgery, HFpEF = heart failure with preserved ejection fraction, HFREF = heart failure with reduced ejection fraction, NSR = normal sinus rhythm, NSTEMI = non-ST elevation myocardial infarction, POAF = post-operative AF, RN = ranolazine. # Case series. \* Abstract. <sup>a</sup> Included in Guerra et al. meta-analysis. <sup>b</sup> Included in Gong et al. meta-analysis. <sup>c</sup> Included in both Guerra et al. and Gong et al. meta-analyses.

The most substantial benefit for ranolazine was observed in the post-operative AF (POAF) population in the setting of open heart surgery as opposed to AF in general [120,124,129,132,133,136,137]. POAF is typically a transient event that occurs within the milieu of inflammation and adrenergic activation resulting from surgical stress [138]. In contrast to paroxysmal or persistent AF, electrical remodeling does not appear to significantly contribute to the development of POAF [139]. Thus, it is not clear what role, if any,  $I_{Na,L}$  plays in POAF or if this is the mechanism by which ranolazine exerts its effect on POAF. A recent study utilized sheep models of paroxysmal and persistent AF to examine the role of ranolazine in the cardioversion of AF to sinus rhythm. Paroxysmal and persistent atrial fibrillation were shown to have differential rotor properties. Ranolazine was found to effectively cardiovert paroxysmal AF but was ineffective in the persistent AF sheep hearts. Ranolazine may only exert an antiarrhythmic effect prior to the fibrotic changes and ion channel remodeling observed in persistent AF [126].

While the results of these studies suggest ranolazine may be useful as a stand-alone treatment of post-operative AF and in conjunction with established anti-arrhythmic agents in the conversion to and maintenance of sinus rhythm, excitement should be tempered given the relatively small patient cohorts and short follow-up times of these studies.

## 5. Outlook

The intracellular  $Na^+$  concentration is a potent modulator of cardiac myocyte function. It regulates the intracellular  $Ca^{2+}$  concentration, determines the activation of the  $Na^+/Ca^{2+}$  exchanger, the  $Na^+/K^+$  ATPase, and the voltage-gated  $Na^+$  channels. While the causal relation between a dysregulated intracellular  $Na^+$  homeostasis and ventricular arrhythmogenesis has been convincingly and consistently shown, it is unclear whether this same mechanism contributes to atrial arrhythmogenesis. Most importantly, quantitative measurements of atrial  $[Na^+]_i$  and a more comprehensive evaluation of intracellular  $Na^+$  homeostasis in healthy and diseased atrial myocytes are needed in order to establish whether  $Na^+$ -based arrhythmogenesis contributes to AF.

**Funding:** This work was funded by a University of Maryland Claude D. Pepper Center Grant (P30 AG028747) to M.G.

**Conflicts of Interest:** The authors declare no conflict of interest.

## References

1. Chugh, S.S.; Havmoeller, R.; Narayanan, K.; Singh, D.; Rienstra, M.; Benjamin, E.J.; Gillum, R.F.; Kim, Y.H.; McAnulty, J.H., Jr.; Zheng, Z.J.; et al. Worldwide epidemiology of atrial fibrillation: A Global Burden of Disease 2010 Study. *Circulation* **2014**, *129*, 837–847. [[CrossRef](#)] [[PubMed](#)]
2. January, C.T.; Wann, L.S.; Alpert, J.S.; Calkins, H.; Cigarroa, J.E.; Cleveland, J.C., Jr.; Conti, J.B.; Ellinor, P.T.; Ezekowitz, M.D.; Field, M.E.; et al. 2014 AHA/ACC/HRS guideline for the management of patients with atrial fibrillation: A report of the American College of Cardiology/American Heart Association Task Force on Practice Guidelines and the Heart Rhythm Society. *J. Am. Coll. Cardiol.* **2014**, *64*, e1–e76. [[CrossRef](#)] [[PubMed](#)]
3. Kirchhof, P.; Bax, J.; Blomstrom-Lundquist, C.; Calkins, H.; Camm, A.J.; Cappato, R.; Cosio, F.; Crijns, H.; Diener, H.C.; Goette, A.; et al. Early and comprehensive management of atrial fibrillation: Proceedings from the 2nd AFNET/EHRA consensus conference on atrial fibrillation entitled ‘research perspectives in atrial fibrillation’. *Eurpace* **2009**, *7*, 860–885. [[CrossRef](#)] [[PubMed](#)]
4. Bers, D.M. *Excitation-Contraction Coupling and Cardiac Contractile Force*, 2nd ed.; Kluwer Academic Publishers: Dordrecht, The Netherlands, 2001.
5. Dewenter, M.; von der Lieth, A.; Katus, H.A.; Backs, J. Calcium Signaling and Transcriptional Regulation in Cardiomyocytes. *Circ. Res.* **2017**, *121*, 1000–1020. [[CrossRef](#)]
6. Schotten, U.; Ausma, J.; Stellbrink, C.; Sabatschus, I.; Vogel, M.; Frechen, D.; Schoendube, F.; Hanrath, P.; Allessie, M.A. Cellular mechanisms of depressed atrial contractility in patients with chronic atrial fibrillation. *Circulation* **2001**, *103*, 691–698. [[CrossRef](#)]
7. Wijffels, M.C.; Kirchhof, C.J.; Dorland, R.; Allessie, M.A. Atrial fibrillation begets atrial fibrillation. A study in awake chronically instrumented goats. *Circulation* **1995**, *92*, 1954–1968. [[CrossRef](#)]
8. Gaspo, R.; Bosch, R.F.; Talajic, M.; Nattel, S. Functional mechanisms underlying tachycardia-induced sustained atrial fibrillation in a chronic dog model. *Circulation* **1997**, *96*, 4027–4035. [[CrossRef](#)]
9. Greiser, M. Calcium signalling silencing in atrial fibrillation. *J. Physiol.* **2017**, *595*, 4009–4017. [[CrossRef](#)]

10. Greiser, M.; Kerfant, B.G.; Williams, G.S.; Voigt, N.; Harks, E.; Dibb, K.M.; Giese, A.; Meszaros, J.; Verheule, S.; Ravens, U.; et al. Tachycardia-induced silencing of subcellular Ca<sup>2+</sup> signaling in atrial myocytes. *J. Clin. Investig.* **2014**, *124*, 4759–4772. [[CrossRef](#)]
11. Christ, T.; Rozmaritsa, N.; Engel, A.; Berk, E.; Knaut, M.; Metzner, K.; Canteras, M.; Ravens, U.; Kaumann, A. Arrhythmias, elicited by catecholamines and serotonin, vanish in human chronic atrial fibrillation. *Proc. Natl. Acad. Sci. USA* **2014**, *111*, 11193–11198. [[CrossRef](#)]
12. Schotten, U.; Verheule, S.; Kirchhof, P.; Goette, A. Pathophysiological mechanisms of atrial fibrillation: A translational appraisal. *Physiol. Rev.* **2011**, *91*, 265–325. [[CrossRef](#)]
13. Wakili, R.; Yeh, Y.H.; Qi, X.Y.; Greiser, M.; Chartier, D.; Nishida, K.; Maguy, A.; Villeneuve, L.R.; Boknik, P.; Voigt, N.; et al. Multiple potential molecular contributors to atrial hypocontractility caused by atrial tachycardia remodeling in dogs. *Circ. Arrhythm. Electrophysiol.* **2010**, *3*, 530–541. [[CrossRef](#)]
14. Bers, D.M.; Barry, W.H.; Despa, S. Intracellular Na<sup>+</sup> regulation in cardiac myocytes. *Cardiovasc. Res.* **2003**, *57*, 897–912. [[CrossRef](#)]
15. Despa, S.; Bers, D.M. Na<sup>+</sup>/K pump current and [Na]<sup>+</sup>(i) in rabbit ventricular myocytes: Local [Na]<sup>+</sup>(i) depletion and Na buffering. *Biophys. J.* **2003**, *84*, 4157–4166. [[CrossRef](#)]
16. Bers, D.M.; Despa, S. Cardiac myocytes Ca<sup>2+</sup> and Na<sup>+</sup> regulation in normal and failing hearts. *J. Pharmacol. Sci.* **2006**, *100*, 315–322. [[CrossRef](#)]
17. Despa, S.; Islam, M.A.; Weber, C.R.; Pogwizd, S.M.; Bers, D.M. Intracellular Na<sup>+</sup> concentration is elevated in heart failure but Na/K pump function is unchanged. *Circulation* **2002**, *105*, 2543–2548. [[CrossRef](#)]
18. Despa, S.; Bers, D.M. Na<sup>+</sup> transport in the normal and failing heart—remember the balance. *J. Mol. Cell. Cardiol.* **2013**, *61*, 2–10. [[CrossRef](#)]
19. Chen-Izu, Y.; Shaw, R.M.; Pitt, G.S.; Yarov-Yarovoy, V.; Sack, J.T.; Abriel, H.; Aldrich, R.W.; Belardinelli, L.; Cannell, M.B.; Catterall, W.A.; et al. Na<sup>+</sup> channel function, regulation, structure, trafficking and sequestration. *J. Physiol.* **2015**, *593*, 1347–1360. [[CrossRef](#)]
20. Sossalla, S.; Kallmeyer, B.; Wagner, S.; Mazur, M.; Maurer, U.; Toischer, K.; Schmitto, J.D.; Seipelt, R.; Schondube, F.A.; Hasenfuss, G.; et al. Altered Na<sup>+</sup> currents in atrial fibrillation effects of ranolazine on arrhythmias and contractility in human atrial myocardium. *J. Am. Coll. Cardiol.* **2010**, *55*, 2330–2342. [[CrossRef](#)]
21. Schotten, U.; Verheule, S.; Kerfant, B.G.; Greiser, M. Enhanced late Na<sup>+</sup> currents in atrial fibrillation new drug target or just an epiphenomenon? *J. Am. Coll. Cardiol.* **2010**, *55*, 2343–2345. [[CrossRef](#)]
22. Greiser, M.; Schotten, U. Dynamic remodeling of intracellular Ca<sup>2+</sup> signaling during atrial fibrillation. *J. Mol. Cell. Cardiol.* **2013**, *58*, 134–142. [[CrossRef](#)]
23. Landstrom, A.P.; Dobrev, D.; Wehrens, X.H.T. Calcium Signaling and Cardiac Arrhythmias. *Circ. Res.* **2017**, *120*, 1969–1993. [[CrossRef](#)]
24. Benitah, J.P.; Alvarez, J.L.; Gómez, A.M. L-type Ca<sup>2+</sup> current in ventricular cardiomyocytes. *J. Mol. Cell. Cardiol.* **2010**, *48*, 26–36. [[CrossRef](#)]
25. Fabiato, A.; Fabiato, F. Contractions induced by a calcium-triggered release of calcium from the sarcoplasmic reticulum of single skinned cardiac cells. *J. Physiol.* **1975**, *249*, 469–495. [[CrossRef](#)]
26. Fabiato, A. Calcium-induced release of calcium from the cardiac sarcoplasmic reticulum. *Am. J. Physiol.* **1983**, *245*, C1–C14. [[CrossRef](#)]
27. Eisner, D.A.; Caldwell, J.L.; Kistamas, K.; Trafford, A.W. Calcium and Excitation-Contraction Coupling in the Heart. *Circ. Res.* **2017**, *121*, 181–195. [[CrossRef](#)]
28. Greiser, M.; Lederer, W.J.; Schotten, U. Alterations of atrial Ca<sup>2+</sup> handling as cause and consequence of atrial fibrillation. *Cardiovasc. Res.* **2011**, *89*, 722–733. [[CrossRef](#)]
29. Bootman, M.D.; Higazi, D.R.; Coombes, S.; Roderick, H.L. Calcium signalling during excitation-contraction coupling in mammalian atrial myocytes. *J. Cell Sci.* **2006**, *119*, 3915–3925. [[CrossRef](#)]
30. Bootman, M.D.; Smyrnias, I.; Thul, R.; Coombes, S.; Roderick, H.L. Atrial cardiomyocyte calcium signalling. *Biochim. Biophys. Acta* **2011**, *1813*, 922–934. [[CrossRef](#)]
31. Hüser, J.; Lipsius, S.L.; Blatter, L.A. Calcium gradients during excitation-contraction coupling in cat atrial myocytes. *J. Physiol.* **1996**, *494*, 641–651. [[CrossRef](#)]
32. Kirk, M.M.; Izu, L.T.; Chen-Izu, Y.; McCulle, S.L.; Wier, W.G.; Balke, C.W.; Shorofsky, S.R. Role of the transverse-axial tubule system in generating calcium sparks and calcium transients in rat atrial myocytes. *J. Physiol.* **2003**, *547*, 441–451. [[CrossRef](#)] [[PubMed](#)]
33. Yue, X.; Zhang, R.; Kim, B.; Ma, A.; Philipson, K.D.; Goldhaber, J.I. Heterogeneity of transverse-axial tubule system in mouse atria: Remodeling in atrial-specific Na<sup>+</sup>-Ca<sup>2+</sup> exchanger knockout mice. *J. Mol. Cell. Cardiol.* **2017**, *108*, 50–60. [[CrossRef](#)] [[PubMed](#)]
34. Arora, R.; Aistrup, G.L.; Supple, S.; Frank, C.; Singh, J.; Tai, S.; Zhao, A.; Chicos, L.; Marszalec, W.; Guo, A.; et al. Regional distribution of T-tubule density in left and right atria in dogs. *Heart Rhythm* **2017**, *14*, 273–281. [[CrossRef](#)] [[PubMed](#)]
35. Soeller, C.; Cannell, M.B. Examination of the transverse tubular system in living cardiac rat myocytes by 2-photon microscopy and digital image-processing techniques. *Circ. Res.* **1999**, *84*, 266–275. [[CrossRef](#)]
36. Huxley, A.F.; Taylor, R.E. Function of Krause's membrane. *Nature* **1955**, *176*, 1068. [[CrossRef](#)]



37. Brandenburg, S.; Kohl, T.; Williams, G.S.; Gusev, K.; Wagner, E.; Rog-Zielinska, E.A.; Hebisch, E.; Dura, M.; Didie, M.; Gotthardt, M.; et al. Axial tubule junctions control rapid calcium signaling in atria. *J. Clin. Investig.* **2016**, *126*, 3999–4015. [[CrossRef](#)]
38. Wagner, E.; Lauterbach, M.A.; Kohl, T.; Westphal, V.; Williams, G.S.; Steinbrecher, J.H.; Streich, J.H.; Korff, B.; Tuan, H.T.; Hagen, B.; et al. Stimulated emission depletion live-cell super-resolution imaging shows proliferative remodeling of T-tubule membrane structures after myocardial infarction. *Circ. Res.* **2012**, *111*, 402–414. [[CrossRef](#)]
39. Jones, P.P.; MacQuaide, N.; Louch, W.E. Dyadic Plasticity in Cardiomyocytes. *Front. Physiol.* **2018**, *9*, 1773. [[CrossRef](#)]
40. Franzini-Armstrong, C.; Protasi, F.; Ramesh, V. Shape, size, and distribution of  $\text{Ca}^{2+}$  release units and couplons in skeletal and cardiac muscles. *Biophys. J.* **1999**, *77*, 1528–1539. [[CrossRef](#)]
41. Franzini-Armstrong, C.; Protasi, F.; Tijssens, P. The assembly of calcium release units in cardiac muscle. *Ann. N. Y. Acad. Sci.* **2005**, *1047*, 76–85. [[CrossRef](#)]
42. Berlin, J.R. Spatiotemporal changes of  $\text{Ca}^{2+}$  during electrically evoked contractions in atrial and ventricular cells. *Am. J. Physiol.* **1995**, *269*, H1165–H1170. [[CrossRef](#)]
43. Venetucci, L.A.; Trafford, A.W.; Eisner, D.A. Increasing ryanodine receptor open probability alone does not produce arrhythmogenic calcium waves: Threshold sarcoplasmic reticulum calcium content is required. *Circ. Res.* **2007**, *100*, 105–111. [[CrossRef](#)]
44. Wier, W.G.; Cannell, M.B.; Berlin, J.R.; Marban, E.; Lederer, W.J. Cellular and subcellular heterogeneity of  $[\text{Ca}^{2+}]_i$  in single heart cells revealed by fura-2. *Science* **1987**, *235*, 325–328. [[CrossRef](#)]
45. Berlin, J.R.; Cannell, M.B.; Lederer, W.J. Cellular origins of the transient inward current in cardiac myocytes. Role of fluctuations and waves of elevated intracellular calcium. *Circ. Res.* **1989**, *65*, 115–126. [[CrossRef](#)]
46. Wier, W.G.; Kort, A.A.; Stern, M.D.; Lakatta, E.G.; Marban, E. Cellular calcium fluctuations in mammalian heart: Direct evidence from noise analysis of aequorin signals in Purkinje fibers. *Proc. Natl. Acad. Sci. USA* **1983**, *80*, 7367–7371. [[CrossRef](#)]
47. Pogwizd, S.M.; Bers, B.D. Cellular basis of triggered arrhythmias in heart failure. *Trends Cardiovasc. Med.* **2004**, *14*, 61–66. [[CrossRef](#)]
48. Patterson, E.; Jackman, W.M.; Beckman, K.J.; Lazzara, R.; Lockwood, D.; Scherlag, B.J.; Wu, R.; Po, S. Spontaneous pulmonary vein firing in man: Relationship to tachycardia-pause early afterdepolarizations and triggered arrhythmia in canine pulmonary veins in vitro. *J. Cardiovasc. Electrophysiol.* **2007**, *10*, 1067–1075. [[CrossRef](#)]
49. Shattock, M.J.; Ottolia, M.; Bers, D.M.; Blaustein, M.P.; Boguslavskyi, A.; Bossuyt, J.; Bridge, J.H.; Chen-Izu, Y.; Clancy, C.E.; Edwards, A.; et al.  $\text{Na}^+/\text{Ca}^{2+}$  exchange and  $\text{Na}^+/\text{K}^+$ -ATPase in the heart. *J. Physiol.* **2015**, *593*, 1361–1382. [[CrossRef](#)]
50. Blaustein, M.P.; Lederer, W.J. Sodium/calcium exchange: Its physiological implications. *Physiol. Rev.* **1999**, *79*, 763–854. [[CrossRef](#)]
51. Philipson, K.D.; Nicoll, D.A. Sodium-calcium exchange: A molecular perspective. *Annu. Rev. Physiol.* **2000**, *62*, 111–133. [[CrossRef](#)]
52. Smith, T. Digitalis: Mechanisms of action and clinical use. *N. Engl. J. Med.* **1988**, *318*, 358–365.
53. Shamraj, O.I.; Grupp, I.L.; Grupp, G.; Melvin, D.; Gradoux, N.; Kremers, W.; Lingrel, J.B.; De Pover, A. Characterisation of  $\text{Na}/\text{K}$ -ATPase, its isoforms, and the inotropic response to ouabain in isolated failing human hearts. *Cardiovasc. Res.* **1993**, *27*, 2229–2237. [[CrossRef](#)]
54. Darbar, D.; Kannankeril, P.J.; Donahue, B.S.; Kucera, G.; Stubblefield, T.; Haines, J.L.; George, A.L., Jr.; Roden, D.M. Cardiac sodium channel (SCN5A) variants associated with atrial fibrillation. *Circulation* **2008**, *117*, 1927–1935. [[CrossRef](#)]
55. Aharonovitz, O.; Demarex, N.; Woodside, M.; Grinstein, S. ATP dependence is not an intrinsic property of  $\text{Na}^+/\text{H}^+$  exchanger NHE1: Requirement for an ancillary factor. *Am. J. Physiol.* **1999**, *276*, C1303–C1311. [[CrossRef](#)]
56. Wan, E.; Abrams, J.; Weinberg, R.L.; Katchman, A.N.; Bayne, J.; Zakharov, S.I.; Yang, L.; Morrow, J.P.; Garan, H.; Marx, S.O. Aberrant sodium influx causes cardiomyopathy and atrial fibrillation in mice. *J. Clin. Investig.* **2016**, *126*, 112–122. [[CrossRef](#)]
57. Nabauer, M.; Gerth, A.; Limbourg, T.; Schneider, S.; Oeff, M.; Kirchhof, P.; Goette, A.; Lewalter, T.; Ravens, U.; Meinertz, T.; et al. The Registry of the German Competence NETwork on Atrial Fibrillation: Patient characteristics and initial management. *Europace* **2009**, *11*, 423–434. [[CrossRef](#)]
58. Kirchhof, P.; Breithardt, G.; Aliot, E.; Al Khatib, S.; Apostolakis, S.; Auricchio, A.; Baillet, C.; Bax, J.; Benninger, G.; Blomstrom-Lundqvist, C.; et al. Personalized management of atrial fibrillation: Proceedings from the fourth Atrial Fibrillation competence NETwork/European Heart Rhythm Association consensus conference. *Europace* **2013**, *15*, 1540–1556. [[CrossRef](#)]
59. Elvan, A.; Linnenbank, A.C.; van Bommel, M.W.; Misier, A.R.; Delnoy, P.P.; Beukema, W.P.; de Bakker, J.M. Dominant frequency of atrial fibrillation correlates poorly with atrial fibrillation cycle length. *Circ. Arrhythm. Electrophysiol.* **2009**, *2*, 634–644. [[CrossRef](#)]
60. Voigt, N.; Heijman, J.; Wang, Q.; Chiang, D.Y.; Li, N.; Karck, M.; Wehrens, X.H.; Nattel, S.; Dobrev, D. Cellular and molecular mechanisms of atrial arrhythmogenesis in patients with paroxysmal atrial fibrillation. *Circulation* **2014**, *129*, 145–156. [[CrossRef](#)]
61. Van Wagoner, D.R.; Pond, A.L.; McCarthy, P.M.; Trimmer, J.S.; Nerbonne, J.M. Outward  $\text{K}^+$  current densities and  $\text{Kv}1.5$  expression are reduced in chronic human atrial fibrillation. *Circ. Res.* **1997**, *80*, 772–781. [[CrossRef](#)]
62. Qi, X.Y.; Vahdahi Hassani, F.; Hoffmann, D.; Xiao, J.; Xiong, F.; Villeneuve, L.R.; Ljubojevic-Holzer, S.; Kamler, M.; Abu-Taha, I.; Heijman, J.; et al. Inositol Trisphosphate Receptors and Nuclear Calcium in Atrial Fibrillation. *Circ. Res.* **2020**, *128*, 619–635. [[CrossRef](#)] [[PubMed](#)]
63. Yeh, Y.H.; Wakili, R.; Qi, X.Y.; Chartier, D.; Boknik, P.; Kääb, S.; Ravens, U.; Coutu, P.; Dobrev, D.; Nattel, S. Calcium-handling abnormalities underlying atrial arrhythmogenesis and contractile dysfunction in dogs with congestive heart failure. *Circ. Arrhythm. Electrophysiol.* **2008**, *1*, 93–102. [[CrossRef](#)] [[PubMed](#)]

64. Zhang, Y.; Qi, Y.; Li, J.J.; He, W.J.; Gao, X.H.; Zhang, Y.; Sun, X.; Tong, J.; Zhang, J.; Deng, X.L.; et al. Stretch-induced sarcoplasmic reticulum calcium leak is causatively associated with atrial fibrillation in pressure-overloaded hearts. *Cardiovasc. Res.* **2021**, *117*, 1091–1102. [[CrossRef](#)] [[PubMed](#)]
65. Verhaert, D.V.M.; Brunner-La Rocca, H.P.; van Veldhuisen, D.J.; Vernooij, K. The bidirectional interaction between atrial fibrillation and heart failure: Consequences for the management of both diseases. *Europace* **2021**, *23* (Suppl. 2), ii40–ii45. [[CrossRef](#)] [[PubMed](#)]
66. Despa, S.; Islam, M.A.; Pogwizd, S.M.; Bers, D.M. Intracellular  $\text{Na}^+$  and  $\text{Na}^+$  pump rate in rat and rabbit ventricular myocytes. *J. Physiol.* **2002**, *539*, 133–143. [[CrossRef](#)]
67. Glitsch, H.G. Electrophysiology of the sodium-potassium-ATPase in cardiac cells. *Physiol. Rev.* **2001**, *81*, 1791–1826. [[CrossRef](#)]
68. Gao, J.; Wang, W.; Cohen, I.S.; Mathias, R.T. Transmural gradients in Na/K pump activity and  $[\text{Na}^+]$  I in canine ventricle. *Biophys. J.* **2005**, *89*, 1700–1709. [[CrossRef](#)]
69. Lebek, S.; Pichler, K.; Reuthner, K.; Trum, M.; Tafelmeier, M.; Mustroph, J.; Camboni, D.; Rupperecht, L.; Schmid, C.; Maier, L.S.; et al. Enhanced CaMKII-Dependent Late I Na Induces Atrial Proarrhythmic Activity in Patients with Sleep-Disordered Breathing. *Circ. Res.* **2020**, *126*, 603–615. [[CrossRef](#)]
70. Gaspo, R.; Sun, H.; Fareh, S.; Levi, M.; Yue, L.; Allen, B.G.; Hebert, T.E.; Nattel, S. Dihydropyridine and beta adrenergic receptor binding in dogs with tachycardia-induced atrial fibrillation. *Cardiovasc. Res.* **1999**, *42*, 434–442. [[CrossRef](#)]
71. Van Wagoner, D.R.; Pond, A.L.; Lamorgese, M.; Rossie, S.S.; McCarthy, P.M.; Nerbonne, J.M. Atrial L-type  $\text{Ca}^{2+}$  currents and human atrial fibrillation. *Circ. Res.* **1999**, *85*, 428–436. [[CrossRef](#)]
72. Schotten, U.; Duytschaever, M.; Ausma, J.; Eijssbouts, S.; Neuberger, H.R.; Allesie, M. Electrical and contractile remodeling during the first days of atrial fibrillation go hand in hand. *Circulation* **2003**, *107*, 1433–1439. [[CrossRef](#)]
73. Sun, H.; Chartier, D.; Leblanc, N.; Nattel, S. Intracellular calcium changes and tachycardia-induced contractile dysfunction in canine atrial myocytes. *Cardiovasc. Res.* **2001**, *49*, 751–761. [[CrossRef](#)]
74. Greiser, M.; Halaszovich, C.R.; Frechen, D.; Boknik, P.; Ravens, U.; Dobrev, D.; Lückhoff, A.; Schotten, U. Pharmacological evidence for altered src kinase regulation of I (Ca, L) in patients with chronic atrial fibrillation. *Naunyn-Schmiedeberg's Arch. Pharmacol.* **2007**, *375*, 383–392. [[CrossRef](#)]
75. Greiser, M.; Neuberger, H.R.; Harks, E.; El-Armouche, A.; Boknik, P.; de Haan, S.; Verheyen, F.; Verheule, S.; Schmitz, W.; Ravens, U.; et al. Distinct contractile and molecular differences between two goat models of atrial dysfunction: AV block-induced atrial dilatation and atrial fibrillation. *J. Mol. Cell. Cardiol.* **2009**, *46*, 385–394. [[CrossRef](#)]
76. Voigt, N.; Li, N.; Wang, Q.; Wang, W.; Trafford, A.W.; Abu-Taha, I.; Sun, Q.; Wieland, T.; Ravens, U.; Nattel, S.; et al. Enhanced sarcoplasmic reticulum  $\text{Ca}^{2+}$  leak and increased  $\text{Na}^+$ - $\text{Ca}^{2+}$  exchanger function underlie delayed afterdepolarizations in patients with chronic atrial fibrillation. *Circulation* **2012**, *125*, 2059–2070. [[CrossRef](#)]
77. Vagos, M.R.; Arevalo, H.; Heijman, J.; Schotten, U.; Sundnes, J. A Computational Study of the Effects of Tachycardia-Induced Remodeling on Calcium Wave Propagation in Rabbit Atrial Myocytes. *Front. Physiol.* **2021**, *12*, 651428. [[CrossRef](#)]
78. Sun, H.; Gaspo, R.; Leblanc, N.; Nattel, S. Cellular mechanisms of atrial contractile dysfunction caused by sustained atrial tachycardia. *Circulation* **1998**, *98*, 719–727. [[CrossRef](#)]
79. Barana, A.; Matamoros, M.; Dolz-Gaiton, P.; Perez-Hernandez, M.; Amoros, I.; Nunez, M.; Sacristan, S.; Pedraz, A.; Pinto, A.; Fernandez-Aviles, F.; et al. Chronic atrial fibrillation increases microRNA-21 in human atrial myocytes decreasing L-type calcium current. *Circ. Arrhythm. Electrophysiol.* **2014**, *7*, 861–868. [[CrossRef](#)]
80. Canon, S.; Caballero, R.; Herraiz-Martinez, A.; Perez-Hernandez, M.; Lopez, B.; Atienza, F.; Jalife, J.; Hove-Madsen, L.; Delpon, E.; Bernad, A. miR-208b upregulation interferes with calcium handling in HL-1 atrial myocytes: Implications in human chronic atrial fibrillation. *J. Mol. Cell. Cardiol.* **2016**, *99*, 162–173. [[CrossRef](#)]
81. Christ, T.; Boknik, P.; Wöhr, S.; Wettwer, E.; Graf, E.M.; Bosch, R.F.; Knaut, E.; Schmitz, W.; Ravens, U.; Dobrev, D. L-type  $\text{Ca}^{2+}$  current downregulation in chronic human atrial fibrillation is associated with increased activity of protein phosphatases. *Circulation* **2004**, *110*, 2651–2657. [[CrossRef](#)]
82. Neef, S.; Dybkova, N.; Sossalla, S.; Ort, K.R.; Fluschnik, N.; Neumann, K.; Seipelt, R.; Schöndube, F.A.; Hasenfuss, G.; Maier, L.S. CaMKII-dependent diastolic SR  $\text{Ca}^{2+}$  leak and elevated diastolic  $\text{Ca}^{2+}$  levels in right atrial myocardium of patients with atrial fibrillation. *Circ. Res.* **2010**, *106*, 1134–1144. [[CrossRef](#)]
83. Vest, J.A.; Wehrens, X.H.; Reiken, S.R.; Lehnart, S.E.; Dobrev, D.; Chandra, P.; Danilo, P.; Ravens, U.; Rosen, M.R.; Marks, A.R. Defective cardiac ryanodine receptor regulation during atrial fibrillation. *Circulation* **2005**, *111*, 2025–2032. [[CrossRef](#)]
84. Brandenburg, S.; Pawlowitz, J.; Fakuade, F.E.; Kownatzki-Danger, D.; Kohl, T.; Mitronova, G.Y.; Scardigli, M.; Neef, J.; Schmidt, C.; Wiedmann, F.; et al. Axial Tubule Junctions Activate Atrial  $\text{Ca}^{2+}$  Release Across Species. *Front. Physiol.* **2018**, *9*, 1227. [[CrossRef](#)]
85. Purohit, A.; Rokita, A.G.; Guan, X.; Chen, B.; Koval, O.M.; Voigt, N.; Neef, S.; Sowa, T.; Gao, Z.; Luczak, E.D.; et al. Oxidized  $\text{Ca}^{2+}$ /calmodulin-dependent protein kinase II triggers atrial fibrillation. *Circulation* **2013**, *128*, 1748–1757. [[CrossRef](#)]
86. Mesubi, O.O.; Rokita, A.G.; Abrol, N.; Wu, Y.; Chen, B.; Wang, Q.; Granger, J.M.; Tucker-Bartley, A.; Luczak, E.D.; Murphy, K.R.; et al. Oxidized CaMKII and O-GlcNAcylation cause increased atrial fibrillation in diabetic mice by distinct mechanisms. *J. Clin. Investig.* **2021**, *131*, e95747. [[CrossRef](#)]
87. Kushnir, A.; Wajsborg, B.; Marks, A.R. Ryanodine receptor dysfunction in human disorders. *Biochim. Biophys. Acta Mol. Cell Res.* **2018**, *1865 Pt B*, 1687–1697. [[CrossRef](#)]
88. Meissner, G. The structural basis of ryanodine receptor ion channel function. *J. Gen. Physiol.* **2017**, *149*, 1065–1089. [[CrossRef](#)]

89. Correll, R.N.; Eder, P.; Burr, A.R.; Despa, S.; Davis, J.; Bers, D.M.; Molkentin, J.D. Overexpression of the Na<sup>+</sup>/K<sup>+</sup> ATPase  $\alpha$ 2 but not  $\alpha$ 1 isoform attenuates pathological cardiac hypertrophy and remodeling. *Circ. Res.* **2014**, *114*, 249–256. [[CrossRef](#)]
90. Poulet, C.; Wettwer, E.; Grunnet, M.; Jespersen, T.; Fabritz, L.; Matschke, K.; Knaut, M.; Ravens, U. Late Sodium Current in Human Atrial Cardiomyocytes from Patients in Sinus Rhythm and Atrial Fibrillation. *PLoS ONE* **2015**, *10*, e0131432. [[CrossRef](#)]
91. Bosch, R.F.; Zeng, X.; Grammer, J.B.; Popovic, K.; Mewis, C.; Kuhlkamp, V. Ionic mechanisms of electrical remodeling in human atrial fibrillation. *Cardiovasc. Res.* **1999**, *44*, 121–131. [[CrossRef](#)]
92. Gaspo, R.; Bosch, R.F.; Bou-Abboud, E.; Nattel, S. Tachycardia-induced changes in Na<sup>+</sup> current in a chronic dog model of atrial fibrillation. *Circ. Res.* **1997**, *81*, 1045–1052. [[CrossRef](#)] [[PubMed](#)]
93. Workman, A.J.; Kane, K.A.; Rankin, A.C. Characterisation of the Na, K pump current in atrial cells from patients with and without chronic atrial fibrillation. *Cardiovasc. Res.* **2003**, *59*, 593–602. [[CrossRef](#)]
94. Garber, L.; Joca, H.C.; Boyman, L.; Lederer, W.J.; Greiser, M. Camera-based measurements of intracellular [Na<sup>+</sup>]<sub>i</sub> in murine atrial myocytes. *J. Vis. Exp.* **2021**. (In press)
95. Maltsev, V.A.; Sabbah, H.N.; Higgins, R.S.; Silverman, N.; Lesch, M.; Undrovinas, A.I. Novel, ultraslow inactivating sodium current in human ventricular cardiomyocytes. *Circulation* **1998**, *98*, 2545–2552. [[CrossRef](#)]
96. Horvath, B.; Banyasz, T.; Jian, Z.; Hegyi, B.; Kistamas, K.; Nanasi, P.P.; Izu, L.T.; Chen-Izu, Y. Dynamics of the late Na<sup>+</sup> current during cardiac action potential and its contribution to afterdepolarizations. *J. Mol. Cell. Cardiol.* **2013**, *64*, 59–68. [[CrossRef](#)]
97. Antzelevitch, C.; Burashnikov, A.; Sicouri, S.; Belardinelli, L. Electrophysiologic basis for the antiarrhythmic actions of ranolazine. *Heart Rhythm* **2011**, *8*, 1281–1290. [[CrossRef](#)]
98. Undrovinas, A.I.; Belardinelli, L.; Undrovinas, N.A.; Sabbah, H.N. Ranolazine improves abnormal repolarization and contraction in left ventricular myocytes of dogs with heart failure by inhibiting late sodium current. *J. Cardiovasc. Electrophysiol.* **2006**, *17* (Suppl. 1), S169–S177. [[CrossRef](#)]
99. Song, Y.; Shryock, J.C.; Belardinelli, L. A slowly inactivating sodium current contributes to spontaneous diastolic depolarization of atrial myocytes. *Am. J. Physiol. Heart Circ. Physiol.* **2009**, *297*, H1254–H1262. [[CrossRef](#)]
100. Song, Y.; Shryock, J.C.; Belardinelli, L. An increase of late sodium current induces delayed afterdepolarizations and sustained triggered activity in atrial myocytes. *Am. J. Physiol. Heart Circ. Physiol.* **2008**, *294*, H2031–H2039. [[CrossRef](#)]
101. Lemoine, M.D.; Duverger, J.E.; Naud, P.; Chartier, D.; Qi, X.Y.; Comtois, P.; Fabritz, L.; Kirchhof, P.; Nattel, S. Arrhythmogenic left atrial cellular electrophysiology in a murine genetic long QT syndrome model. *Cardiovasc. Res.* **2011**, *92*, 67–74. [[CrossRef](#)]
102. Olesen, M.S.; Yuan, L.; Liang, B.; Holst, A.G.; Nielsen, N.; Nielsen, J.B.; Hedley, P.L.; Christiansen, M.; Olesen, S.P.; Haunso, S.; et al. High prevalence of long QT syndrome-associated SCN5A variants in patients with early-onset lone atrial fibrillation. *Circ. Cardiovasc. Genet.* **2012**, *5*, 450–459. [[CrossRef](#)]
103. Burashnikov, A.; Di Diego, J.M.; Zygmunt, A.C.; Belardinelli, L.; Antzelevitch, C. Atrium-selective sodium channel block as a strategy for suppression of atrial fibrillation: Differences in sodium channel inactivation between atria and ventricles and the role of ranolazine. *Circulation* **2007**, *116*, 1449–1457. [[CrossRef](#)]
104. Kumar, K.; Nearing, B.D.; Carvas, M.; Nascimento, B.C.; Acar, M.; Belardinelli, L.; Verrier, R.L. Ranolazine exerts potent effects on atrial electrical properties and abbreviates atrial fibrillation duration in the intact porcine heart. *J. Cardiovasc. Electrophysiol.* **2009**, *20*, 796–802. [[CrossRef](#)]
105. Burashnikov, A.; Sicouri, S.; Di Diego, J.M.; Belardinelli, L.; Antzelevitch, C. Synergistic effect of the combination of ranolazine and dronedarone to suppress atrial fibrillation. *J. Am. Coll. Cardiol.* **2010**, *56*, 1216–1224. [[CrossRef](#)]
106. Belardinelli, L.; Liu, G.; Smith-Maxwell, C.; Wang, W.Q.; El-Bizri, N.; Hirakawa, R.; Karpinski, S.; Li, C.H.; Hu, L.; Li, X.J.; et al. A novel, potent, and selective inhibitor of cardiac late sodium current suppresses experimental arrhythmias. *J. Pharmacol. Exp. Ther.* **2013**, *344*, 23–32. [[CrossRef](#)]
107. Sicouri, S.; Belardinelli, L.; Antzelevitch, C. Antiarrhythmic effects of the highly selective late sodium channel current blocker GS-458967. *Heart Rhythm* **2013**, *10*, 1036–1043. [[CrossRef](#)]
108. Burashnikov, A.; Di Diego, J.M.; Goodrow, R.J., Jr.; Belardinelli, L.; Antzelevitch, C. Atria are More Sensitive Than Ventricles to GS-458967-Induced Inhibition of Late Sodium Current. *J. Cardiovasc. Pharmacol. Ther.* **2015**, *20*, 501–508. [[CrossRef](#)]
109. Carneiro, J.S.; Bento, A.S.; Bacic, D.; Nearing, B.D.; Rajamani, S.; Belardinelli, L.; Verrier, R.L. The Selective Cardiac Late Sodium Current Inhibitor GS-458967 Suppresses Autonomically Triggered Atrial Fibrillation in an Intact Porcine Model. *J. Cardiovasc. Electrophysiol.* **2015**, *26*, 1364–1369. [[CrossRef](#)]
110. Luo, A.; Ma, J.; Song, Y.; Qian, C.; Wu, Y.; Zhang, P.; Wang, L.; Fu, C.; Cao, Z.; Shryock, J.C. Larger late sodium current density as well as greater sensitivities to ATX II and ranolazine in rabbit left atrial than left ventricular myocytes. *Am. J. Physiol. Heart Circ. Physiol.* **2014**, *306*, H455–H461. [[CrossRef](#)]
111. Nattel, S.; Harada, M. Atrial Remodeling and Atrial Fibrillation: Recent Advances and Translational Perspectives. *J. Am. Coll. Cardiol.* **2014**, *63*, 2335–2345. [[CrossRef](#)]
112. Ratte, A.; Wiedmann, F.; Kraft, M.; Katus, H.A.; Schmidt, C. Antiarrhythmic Properties of Ranolazine: Inhibition of Atrial Fibrillation Associated TASK-1 Potassium Channels. *Front. Pharmacol.* **2019**, *10*, 1367. [[CrossRef](#)]
113. Zimetbaum, P.J.C. Antiarrhythmic drug therapy for atrial fibrillation. *Circulation* **2012**, *125*, 381–389. [[CrossRef](#)]
114. Mann, S.A.; Heide, J.; Knott, T.; Airini, R.; Epureanu, F.B.; Deftu, A.F.; Deftu, A.T.; Radu, B.M.; Amuzescu, B. Recording of multiple ion current components and action potentials in human induced pluripotent stem cell-derived cardiomyocytes via automated patch-clamp. *J. Pharmacol. Toxicol. Methods* **2019**, *100*, 106599. [[CrossRef](#)]

115. Amuzescu, B.; Airini, R.; Epureanu, F.B.; Mann, S.A.; Knott, T.; Radu, B.M. Evolution of mathematical models of cardiomyocyte electrophysiology. *Math. Biosci.* **2021**, *334*, 108567. [[CrossRef](#)]
116. Chaitman, B.R.J.C. Ranolazine for the treatment of chronic angina and potential use in other cardiovascular conditions. *Circulation* **2006**, *113*, 2462–2472. [[CrossRef](#)]
117. Fragakis, N.; Koskinas, K.C.; Katritsis, D.G.; Pagourelis, E.D.; Zografos, T.; Geleris, P. Comparison of effectiveness of ranolazine plus amiodarone versus amiodarone alone for conversion of recent-onset atrial fibrillation. *Am. J. Cardiol.* **2012**, *110*, 673–677. [[CrossRef](#)]
118. Koskinas, K.C.; Fragakis, N.; Katritsis, D.; Skeberis, V.; Vassilikos, V. Ranolazine enhances the efficacy of amiodarone for conversion of recent-onset atrial fibrillation. *Europace* **2014**, *16*, 973–979. [[CrossRef](#)]
119. Simopoulos, V.; Tagarakis, G.I.; Daskalopoulou, S.S.; Daskalopoulos, M.E.; Lenos, A.; Chryssagis, K.; Skoularingis, I.; Molyvdas, P.A.; Tsilimingas, N.B.; Aidonidis, I. Ranolazine enhances the antiarrhythmic activity of amiodarone by accelerating conversion of new-onset atrial fibrillation after cardiac surgery. *Angiology* **2014**, *65*, 294–297. [[CrossRef](#)]
120. Tsanaxidis, N.; Aidonidis, I.; Hatziefthimiou, A.; Triposkiadis, F.; Skoularigis, I. Acute Ranolazine Plus Amiodarone vs Amiodarone Alone for Conversion of Recent-Onset Atrial Fibrillation: A Prospective Clinical Study. *Eur. Heart J.* **2015**, *36*, 910–911.
121. Reiffel, J.A.; Camm, A.J.; Belardinelli, L.; Zeng, D.; Karwatowska-Prokopczuk, E.; Olmsted, A.; Zareba, W.; Rosero, S.; Kowey, P. The Harmony Trial: Combined Ranolazine and Dronedarone in the Management of Paroxysmal Atrial Fibrillation: Mechanistic and Therapeutic Synergism. *Circ. Arrhythm. Electrophysiol.* **2015**, *8*, 1048–1056. [[CrossRef](#)]
122. Tsanaxidis, N.; Aidonidis, I.; Hatziefthimiou, A.; Daskalopoulou, S.S.; Giamouzis, G.; Triposkiadis, F.; Skoularigis, I. Ranolazine Added to Amiodarone Facilitates Earlier Conversion of Atrial Fibrillation Compared to Amiodarone-Only Therapy. *Pacing Clin. Electrophysiol.* **2017**, *40*, 372–378. [[CrossRef](#)] [[PubMed](#)]
123. Simopoulos, V.; Hevas, A.; Hatziefthimiou, A.; Dipla, K.; Skoularigis, I.; Tsilimingas, N.; Aidonidis, I. Amiodarone plus Ranolazine for Conversion of Post-Cardiac Surgery Atrial Fibrillation: Enhanced Effectiveness in Reduced Versus Preserved Ejection Fraction Patients. *Cardiovasc. Drugs Ther.* **2018**, *32*, 559–565. [[CrossRef](#)] [[PubMed](#)]
124. De Vecchis, R.; Ariano, C.; Giasi, A.; Cioppa, C. Antiarrhythmic effects of ranolazine used both alone for prevention of atrial fibrillation and as an add-on to intravenous amiodarone for its pharmacological cardioversion: A meta-analysis. *Minerva Cardioangiol.* **2018**, *66*, 349–359. [[PubMed](#)]
125. Vassallo, P.; Trohman, R.G. Prescribing amiodarone: An evidence-based review of clinical indications. *JAMA* **2007**, *298*, 1312–1322. [[CrossRef](#)]
126. Murdock, D.K.; Overton, N.; Kersten, M.; Kaliebe, J.; Devecchi, F. The effect of ranolazine on maintaining sinus rhythm in patients with resistant atrial fibrillation. *Indian Pacing Electrophysiol. J.* **2008**, *8*, 175–181.
127. Miles, R.H.; Passman, R.; Murdock, D.K. Comparison of effectiveness and safety of ranolazine versus amiodarone for preventing atrial fibrillation after coronary artery bypass grafting. *Am. J. Cardiol.* **2011**, *108*, 673–676. [[CrossRef](#)]
128. Murdock, D.K.; Kaliebe, J.; Larrain, G. The use of ranolazine to facilitate electrical cardioversion in cardioversion-resistant patients: A case series. *Pacing Clin. Electrophysiol.* **2012**, *35*, 302–307. [[CrossRef](#)]
129. Tagarakis, G.I.; Aidonidis, I.; Daskalopoulou, S.S.; Simopoulos, V.; Liouras, V.; Daskalopoulos, M.E.; Parisis, C.; Papageorgiou, K.; Skoularingis, I.; Triposkiadis, F.; et al. Effect of ranolazine in preventing postoperative atrial fibrillation in patients undergoing coronary revascularization surgery. *Curr. Vasc. Pharmacol.* **2013**, *11*, 988–991. [[CrossRef](#)]
130. Scirica, B.M.; Belardinelli, L.; Chaitman, B.R.; Waks, J.W.; Volo, S.; Karwatowska-Prokopczuk, E.; Murphy, S.A.; Cheng, M.L.; Braunwald, E.; Morrow, D.A. Effect of ranolazine on atrial fibrillation in patients with non-ST elevation acute coronary syndromes: Observations from the MERLIN-TIMI 36 trial. *Europace* **2015**, *17*, 32–37. [[CrossRef](#)]
131. De Ferrari, G.M.; Maier, L.S.; Mont, L.; Schwartz, P.J.; Simonis, G.; Leschke, M.; Gronda, E.; Boriani, G.; Darius, H.; Guillaumon Toran, L.; et al. Ranolazine in the treatment of atrial fibrillation: Results of the dose-ranging RAFFAELLO (Ranolazine in Atrial Fibrillation Following an Electrical Cardioversion) study. *Heart Rhythm* **2015**, *12*, 872–878. [[CrossRef](#)]
132. Bekeith, S.; Meghani, M.; Shariff, M.; Asti, D.; Nalluri, N.; Agarwal, V.; Shah, N.; Soomro, A.; Khan, M.; Spagnola, J.; et al. Effect of ranolazine on the incidence of atrial fibrillation following cardiac surgery. *Circulation* **2015**, *132*, A13387.
133. Hammond, D.A.; Smotherman, C.; Jankowski, C.A.; Tan, S.; Osian, O.; Kraemer, D.; DeLosSantos, M. Short-course of ranolazine prevents postoperative atrial fibrillation following coronary artery bypass grafting and valve surgeries. *Clin. Res. Cardiol.* **2015**, *104*, 410–417. [[CrossRef](#)]
134. Guerra, F.; Romandini, A.; Barbarossa, A.; Belardinelli, L.; Capucci, A. Ranolazine for rhythm control in atrial fibrillation: A systematic review and meta-analysis. *Int. J. Cardiol.* **2017**, *227*, 284–291. [[CrossRef](#)]
135. Gong, M.; Zhang, Z.; Fragakis, N.; Korantzopoulos, P.; Letsas, K.P.; Li, G.; Yan, G.X.; Liu, T. Role of ranolazine in the prevention and treatment of atrial fibrillation: A meta-analysis of randomized clinical trials. *Heart Rhythm* **2017**, *14*, 3–11. [[CrossRef](#)]
136. Patel, N.; Kluger, J. Ranolazine for Prevention of Atrial Fibrillation after Cardiac Surgery: A Systematic Review. *Cureus* **2018**, *10*, e2584. [[CrossRef](#)]
137. Mariscalco, G.; Engström, K.G. Atrial fibrillation after cardiac surgery: Risk factors and their temporal relationship in prophylactic drug strategy decision. *Int. J. Cardiol.* **2008**, *129*, 354–362. [[CrossRef](#)]

- 
138. Dobrev, D.; Aguilar, M.; Heijman, J.; Guichard, J.-B.; Nattel, S. Postoperative atrial fibrillation: Mechanisms, manifestations and management. *Nat. Rev. Cardiol.* **2019**, *16*, 417–436. [[CrossRef](#)]
  139. Ramirez, R.J.; Takemoto, Y.; Martins, R.P.; Filgueiras-Rama, D.; Ennis, S.R.; Mironov, S.; Bhushal, S.; Deo, M.; Rajamani, S.; Berenfeld, O.; et al. Mechanisms by Which Ranolazine Terminates Paroxysmal but Not Persistent Atrial Fibrillation. *Circ. Arrhythm. Electrophysiol.* **2019**, *12*, e005557. [[CrossRef](#)]