



Published in final edited form as:

Mol Psychiatry. 2022 January ; 27(1): 445–465. doi:10.1038/s41380-021-01092-3.

Mechanisms of Synaptic Transmission Dysregulation in the Prefrontal Cortex: Pathophysiological Implications

Zhen Yan*, Benjamin Rein

Department of Physiology and Biophysics, State University of New York at Buffalo, Jacobs School of Medicine and Biomedical Sciences, Buffalo, NY 14203, USA

Abstract

Prefrontal cortex (PFC) serves as the chief executive officer of the brain, controlling the highest level cognitive and emotional processes. Its local circuits among glutamatergic principal neurons and GABAergic interneurons, as well as its long-range connections with other brain regions, have been functionally linked to specific behaviors, ranging from working memory to reward seeking. The efficacy of synaptic signaling in PFC network is profoundly influenced by monoaminergic inputs via the activation of dopamine, adrenergic or serotonin receptors. Stress hormones and neuropeptides also exert complex effects on the synaptic structure and function of PFC neurons. Dysregulation of PFC synaptic transmission is strongly linked to the social deficits, affective disturbance, and memory loss in brain disorders including autism, schizophrenia, depression and Alzheimer's disease. Critical neural circuits, biological pathways, and molecular players that go awry in these mental illnesses have been revealed by integrated electrophysiological, optogenetic, biochemical, and transcriptomic studies of PFC. Novel epigenetic mechanism-based strategies are proposed as potential avenues of therapeutic intervention for PFC-involved diseases. This review provides an overview on PFC network organization and synaptic modulation, as well as the mechanisms linking PFC dysfunction to the pathophysiology of neurodevelopmental, neuropsychiatric and neurodegenerative diseases. Insights from the preclinical studies offer the potential for discovering new medical treatment of human patients with these brain disorders.

Keywords

prefrontal cortex; synaptic transmission; glutamate; GABA; monoamine; stress; epigenetics; autism; schizophrenia; depression; Alzheimer's disease

Prefrontal cortex (PFC) is the central hub for high-level executive functions critically involved in mental health and diseases. In this review, we will provide an overview on how synaptic transmission in PFC is regulated in normal and pathological conditions. We will first summarize PFC functional organization by describing the local and long-range neuronal circuits and the behavioral correlates to these top-down and bottom-up synaptic connections.

Users may view, print, copy, and download text and data-mine the content in such documents, for the purposes of academic research, subject always to the full Conditions of use: http://www.nature.com/authors/editorial_policies/license.html#terms

*: Correspondence should be addressed to Z. Y. (zhenyan@buffalo.edu).

Conflict of Interests:

The authors declare no conflict of interest.

Next, we will summarize PFC modulation by describing the influence of monoaminergic systems, stress hormones and neuropeptides on the synaptic structure and function of PFC neurons. Finally, we will summarize the PFC synaptic dysregulation in a variety of brain disorders and potential treatment strategies. Because of the broad scope of this review, only selective neuronal circuits, signaling molecules and disease mechanisms are included. Interested readers are encouraged to find more comprehensive details on specific aspects of the topic in the original papers and review articles cited here.

PFC Organization and Function

PFC network organization and functional implications

PFC is the cortical region located at the anterior part of the frontal lobe. PFC of humans is delineated into two functionally, morphologically, and evolutionarily different regions: ventromedial PFC and lateral PFC. PFC is the last portion of the brain to fully develop. In monkey PFC neurons, the rapid phase of synaptogenesis reaches the plateau at 2 months old, and maintains the consistently high synaptic density from early adolescence through puberty (2 months to 3 years), the formative time when learning experiences are most intense ¹.

Early studies of macaque monkeys have revealed PFC as a crucial hub necessary for successful maintenance of working memory (WM), a cognitive process involving information holding and manipulation, which serves as the fundamental backbone for executive functions ^{2,3}. The key findings is that in a delayed reaching task, some primate dorsolateral PFC neurons exhibit the increased firing during the delay period when response-related information needs to be held in mind to guide the subsequent execution of correct responses ^{4,5}. The delayed and persistent spiking activity that encodes spatial “working memory” signals arises from recurrent excitation among PFC pyramidal neurons ^{5,6}. Cortical network models predict that NMDA receptors subserve the recurrent synaptic excitation and persist firing of PFC pyramidal neurons during working memory ^{7,8}. In parallel with these neurophysiological studies, neuroimaging studies also implicate the human PFC in higher-order cognitive processing including working memory ⁹ and sustained attention ¹⁰.

Based on anatomical, functional and connectivity homologies, it is thought that rodent PFC is composed of three cytoarchitecturally defined parts: the prelimbic (PL), infralimbic (IL), and anterior cingulate cortex (ACC) ^{11,12}. Electro-physiological and pharmacological evidence further supports the existence of a frontal cortical area in the rat that exhibits increased firing during the delay period in the absence of sensory stimulus that instruct the orienting response, as in primate PFC ¹³. Recordings of neuronal ensembles in rats during new task learning further find that the dynamic changes in PFC neuronal activity parallel with behavioral decoding, suggesting that working memory can be mediated by dynamic activation of different neural populations in PFC ¹⁴.

PFC projects to distributed subcortical autonomic, motor, and limbic regions (Fig. 1). Tracing studies have found that deep layer PFC pyramidal neurons project to mediodorsal thalamus, lateral hypothalamus, ventral and dorsal striatum, and basolateral amygdala (BLA) ¹⁵. Prefrontal circuitry can dynamically control reward-seeking behaviour through

projection-specific cue encoding¹⁶: stimulation of PFC to nucleus accumbens (NAc) neurons promotes conditioned reward-seeking behaviour, while activation of PFC to thalamic neurons suppresses both the acquisition and expression of conditioned reward seeking. A specific subset of mPFC projections to NAc neurons encodes the decision to initiate or suppress reward seeking when faced with risk of punishment¹⁷.

Dorsomedial PFC exerts the top-down control of motor cortex ensembles to inhibit inappropriate responses during a delayed-response task¹⁸. The neural projection from medial PFC (mPFC) to a brainstem area has been found to control behavioral adaptation to social defeat¹⁹: social defeat weakens functional connectivity of these two areas, while selective inhibition of this pathway recaptures behavioral effects of social defeat. A spatiotemporal dynamic network, which originates in PFC and ventral striatum, relays through the amygdala and ventral tegmental area (VTA), and converges in ventral hippocampus (vHIP), is found to encode depression vulnerability in mice subjected to social defeat stress²⁰.

PFC also receives inputs from diverse regions, including hippocampus, thalamus, and BLA (Fig. 1). The direct hippocampal to prefrontal afferents in mice are found to be critical for encoding of spatial cues during working memory, and successful encoding of task-related information is mediated by gamma-frequency synchrony between hippocampus and PFC²¹. Proper vHIP-mPFC signaling is necessary to recall social memories²². Reciprocal interactions between PFC and thalamus play a critical role in high-level cognitive function²³. Thalamic input amplifies PFC connectivity, sustaining attentional control²⁴ and enabling sensory selection in divided attention²⁵. The reciprocal connection between PFC and BLA is implicated in reward-seeking and fear-related responses, and optogenetic studies have revealed that BLA to PL circuit is critical in governing the selection of behavioral responses amid conflicting cues of reward and punishment²⁶.

PFC cellular components and synaptic circuits

PFC is composed of pyramidal neurons with wide arbor axons, wide spikes, low discharge rates, and interneurons, many of which having horizontal axonal arbors, narrow action potentials (APs) and high evoked firing rates²⁷. PFC fast spiking (FS) interneurons (presumably expressing parvalbumin, PV+) form contacts on the perisomatic domains of pyramidal neurons, while non-FS interneurons (presumably expressing somatostatin, SST+) contact peridendritic domains²⁸, enabling PV+ and SST+ interneurons to specialize in the control of the output and input of principal neurons, respectively. PV+ interneurons, which could fire in millisecond synchrony, exert fast and powerful inhibition on principal neuron firing, whereas SST+ interneurons exert weak and more variable inhibitory effects on firing output in behaving mice²⁹. PFC in awake mice also has a basic disinhibitory circuit module in which activation of VIP+ interneurons transiently suppresses primarily SST+ and a fraction of PV+ interneurons³⁰. Such disinhibitory control may serve to amplify local processing and modulate information gating. A subclass of VIP neurons expressing ChAT, ChAT-VIP, directly excites neurons throughout cortical layers via fast synaptic transmission of acetylcholine in mPFC, providing a local source to control attention³¹.

Optogenetics, in vivo electrophysiological recording and single-cell microendoscopic Ca²⁺ imaging of PFC neurons in behaving animals have revealed the cell-type functional response diversity that contributes to diverse behavioral correlates (Fig. 1). PL pyramidal neurons are found to contain anatomically and molecularly distinct subpopulations that target three downstream regions implicated in social behavior: NAc, BLA, and VTA. Activation of NAc-projecting PL neurons, but not the other subpopulations, decreases the preference for a social target³². PV+ interneurons in mPFC also play a key role in social behaviors: activation of mPFC PV+ neurons rescues social memory impairment caused by vHIP inhibition³³. Dampening thalamic activity causes significant reductions of GABA signaling in the mPFC and concomitant abnormalities in cognition and social interaction, which is ameliorated by selectively activating mPFC PV+ interneurons³⁴. BLA inputs also make strong connections onto PFC PV+ and SST+ interneurons, driving feedforward inhibition of PFC pyramidal neurons^{35,36}.

In mice performing a reward foraging task, SST+ interneurons in ACC are found to selectively respond at reward approach, whereas PV+ interneurons respond at reward leaving²⁹. In mice performing a PFC-dependent sensory discrimination task, PV+ interneurons are responsive to sensory cues, motor action, and trial outcomes, while SST+ and VIP+ interneurons respond more selectively to motor action or trial outcomes, respectively, and pyramidal neurons show much greater functional heterogeneity with varied responses across cortical layers³⁷. This cell type-specific encoding of task-related signals may be crucial for local computation within the PFC microcircuit to guide goal-directed behavior. Furthermore, SST+ interneurons in mPFC of mice are found to play a primary role in orchestrating the ability to discriminate positive and negative affective states³⁸: inhibition of mPFC SST+ interneurons abolishes affective state discrimination, while an increased synchronous activity of PFC SST+ interneurons, which guides the inhibition of PFC pyramidal neurons, is associated with this social cognitive function.

More recent studies have further revealed the functional role of PFC interneurons in working memory. During a spatial WM task, optogenetically inhibiting PFC SST+, but not PV+, interneurons decreases the long-range synchrony between hippocampus and PFC and impairs working memory accuracy³⁹, suggesting that SST+ interneurons are uniquely involved in facilitating hippocampal-prefrontal synchrony and prefrontal spatial encoding. Inhibiting PFC pyramidal neurons by optogenetically activating SST+ or PV+ interneurons during the delay impairs working memory performance, while activating VIP+ interneurons in PFC improves memory retention⁴⁰, which has provided a circuit mechanism underlying memory-guided behavior. PV+ and SST+ interneurons in mPFC are also found to have distinct roles in WM: PV interneurons show weak target-dependent delay-period activity and are strongly inhibited by reward; while SST+ interneurons show strong target-dependent delay-period activity, and only a subtype of them is inhibited by reward⁴¹.

Moreover, in a social fear conditioning paradigm, SST+ interneurons suppress PV+ interneurons and disinhibit pyramidal cells, which consequently enhances PFC output to mediate social fear responses⁴². This disinhibitory microcircuit in PFC through interactions between interneuron subtypes provides an important circuit mechanism in gating social fear behavior. The relapse of extinguished fear is found to be mediated by a feedforward

inhibitory pathway from ventral hippocampus to IL cortex, which involves the recruitment of PV+ interneurons in IL⁴³. In the avoidance behavior of elevated plus maze, PFC VIP+ interneurons enable cortical circuits to integrate hippocampal inputs, therefore effectively gating the transmission of signals related to open arm avoidance across hippocampal-prefrontal network⁴⁴ (Fig. 1).

Regulation of PFC Synaptic Function

Monoaminergic regulation of PFC synaptic transmission

PFC is very sensitive to neurochemical environment (Fig. 2), and monoaminergic modulation of the efficacy of synaptic connections in PFC circuits has profound effects on PFC-mediated executive function, including working memory, regulation of attention, inhibition of inappropriate behaviors, and impulsivity control⁴⁵. Reduced catecholamine transmission has been linked to ADHD, while overamplified noradrenergic transmission is associated with PTSD⁴⁶. The therapeutic actions of psychostimulant methylphenidate for ADHD involve the preferential increase of catecholamine neurotransmission within PFC⁴⁷ and dose-dependent, bi-directional regulation of PFC glutamate receptors⁴⁸.

Dopamine

Serial section electron microscopy studies suggest that the majority of dopamine synapses in all PFC layers are on pyramidal neurons, but a significant fraction are on GABAergic interneurons⁴⁹. Electrophysiological studies revealed that dopamine selectively modulates PFC excitatory and inhibitory microcircuits. DA depressed inhibitory transmission between FS interneurons and pyramidal neurons, but enhanced inhibition between non-FS interneurons and pyramidal cells²⁸. Dopamine also reduces recurrent excitation in layer V pyramidal neurons⁵⁰, which may involve target-specific expression of presynaptic and postsynaptic D1Rs^{50,51}. Dopamine has no effect on excitatory transmission from pyramidal neurons to FS interneurons, but increases the excitability of FS interneurons⁵². In an experimental condition mimicking NMDA receptor hypofunction and GABA_A receptor deficiency in schizophrenia, dopamine, by acting on D2 receptors, promoted burst firing in a subset of PFC pyramidal neurons⁵³.

Stimulation of D1R produces an inverted-U dose response on PFC neuronal firing and cognitive performance during working memory tasks⁴⁶. High levels of D1R activation of cAMP signaling reduces PFC neuronal firing and impairs working memory via opening of HCN channels at excitatory synapses⁵⁴. It suggests that optimal levels of dopamine are essential for PFC function, while excessive dopamine stimulation could be detrimental.

Optogenetic stimulation of VTA neurons to trigger the synaptically released dopamine has revealed a marked and prolonged enhancement of the excitability of PFC PV+ interneurons and a modest and short-lived enhancement of the excitability of PFC principal neurons⁵⁵. Blocking dopamine receptor activation in PFC shortens the VTA excitation of PFC PV+ interneurons and prolongs the VTA excitation of PFC principal neurons, and pharmacological evidence suggests that the dopaminergic effect on PFC principal neurons is through influencing the inhibitory transmission system⁵⁵. These results have unmasked

a role of dopamine in regulating the temporal dynamics of excitation/inhibition balance in VTA-PFC circuit.

Dopamine D4 receptor, which is largely restricted to PFC neurons, is highly implicated in ADHD and schizophrenia^{56,57}. It has been revealed that D4 receptors serve as a homeostatic synaptic factor to stabilize cortical excitability by dynamically regulating CaMKII^{58,59} and the downstream NMDA and AMPA receptor channels^{60–62}. In contrast to the activity-dependent, bi-directional effect of D4R stimulation on AMPARs in PFC pyramidal neurons^{62,63}, D4 receptors suppress AMPARs in PFC GABAergic interneurons via the unique calcineurin/Slingshot/cofilin signaling mechanism⁶⁴. Moreover, D4R stimulation elicits distinct effects on synaptic-driven action potential firing in PFC projection neurons versus fast-spiking interneurons, which are differentially altered in neuropsychiatric disorder-related conditions⁶⁵. Stress exposure in D4R knockout mice induces schizophrenia-like behaviors via disruption of GABAergic transmission in PFC⁶⁶. These results have provided a framework for understanding how D4R signaling is involved in the regulation of PFC functions.

D4R is one of the most variable proteins (and genes) in humans. A unique primate-specific feature of D4R is the additional 2 to 11 proline-rich repeats (most commonly 4) located in the third intracellular loop, which allows more complex simultaneous interactions with other proteins containing the SH3 domain. Interestingly, genetic studies have linked novelty-seeking behavior and ADHD to long-repeat D4R allele (hD4.7)^{57,67}. Using D4R knockout mice with PFC expression of human D4R variants containing different repeats (hD4.4 and hD4.7), researchers have revealed the impact of hD4 variants on synaptic transmission and network activity in PFC neurons, the proteins interacting with hD4 variants and the signaling pathways activated by hD4 variants, as well as the behavioral changes caused by hD4 variants^{68,69}. These studies provide novel insights into the functional roles of the remarkable polymorphism of human D4 receptors, and shed light on the development of new therapeutic agents for diseases associated with dopaminergic dysfunction (Fig. 2).

Noradrenaline

The noradrenergic system in PFC is involved in many physiological and psychological processes, including working memory and mood control⁴⁶. Endogenous norepinephrine (NE, also called noradrenaline), by acting on α 1-ARs, exerts complex effects in PFC: NE increases the firing of some PFC pyramidal neurons via presynaptic excitation of glutamate release under basal conditions, but when high levels of α 1-AR stimulation occurs, such as with stress exposure, NE suppresses PFC neuronal firing through opening of K^+ channels on spines⁷⁰. Stimulation of α 2A-ARs enhances the spatially-tuned, delay-related firing of PFC neurons and strengthens working memory networks through inhibition of cAMP and closing HCN (Hyperpolarization-activated Cyclic Nucleotide-gated) channels⁷¹. The interaction of HCN channels and cAMP regulating proteins in dendritic spines of PFC is considered to be potential substrate of working memory⁷².

Activation of α 1-ARs or α 2-ARs suppresses NMDAR currents in PFC pyramidal neurons by distinct mechanisms: the α 1-AR effect depends on the PLC/IP₃/Ca²⁺ pathway, whereas

the α_2 -AR effect depends on PKA and the microtubule-based transport of NMDARs that is regulated by ERK signaling. Moreover, the effects of α_1 -ARs and α_2 -ARs are differentially modified by RGS4⁷³, a member of the RGS family protein that plays an important role in modulating GPCR signaling⁷⁴ and an identified schizophrenia susceptibility gene^{75,76} (Fig. 2).

Serotonin

PFC receives a major serotonergic projection, which is dysfunctional in individuals who show impulsive aggression and violence⁷⁷. Aberrant serotonergic neurotransmission has long been implicated in the pathogenesis of neuropsychiatric disorders associated with PFC dysfunction, including schizophrenia, depression and anxiety⁷⁸. Most clinically effective antipsychotic drugs, antidepressants and anxiolytics all exert potent effects on the serotonin system. The pleiotropic functions of serotonin are afforded by the concerted actions of multiple serotonin receptor subtypes⁷⁹.

A series of studies have revealed the synaptic functions of serotonin receptors in PFC and how dysfunction of the serotonin system contributes to mental illnesses^{80–89}. One of the key targets of serotonin receptor signaling is the glutamatergic system. It has been found that 5-HT_{1A} receptors in PFC pyramidal neurons suppress NMDAR function by disrupting the microtubule/kinesin-based dendritic transport of NMDA receptors⁸³, while this effect of 5-HT_{1A} is opposed by 5-HT_{2A/C} signaling⁸². In the human PFC, serotonin suppresses monosynaptic excitatory connections from pyramidal cells to interneurons⁹⁰. At thalamocortical synapses, 5-HT_{2A} activation enhances NMDA transmission, gates the induction of NMDAR-mediated temporal plasticity, and facilitates associated cognitive functions⁹¹.

Another main target of serotonin receptor signaling is the GABAergic system. 5-HT₂ receptors inhibit GABA_AR-mediated currents in PFC pyramidal neurons through phosphorylation of GABA_A receptors by the activation of anchored PKC⁸⁷, while 5-HT₄ receptors modulate GABAergic signaling bi-directionally, depending on the basal PKA activation levels that are determined by neuronal activity⁸⁰. Serotonergic regulation of GABA transmission in PFC is subject to the alteration by corticotropin-releasing factor (CRF) in response to stressful stimuli⁸⁹ or chronic antidepressant treatment⁸⁶. In addition to pyramidal neurons, serotonin also affects GABAergic fast-spiking interneurons in PFC by enhancing their excitability and gamma frequency temporal integration via 5-HT_{2A} suppression of an inward-rectifying potassium conductance⁹². These studies have provided unique and complex mechanisms for serotonin receptors to dynamically regulate synaptic transmission and neuronal excitability in the PFC network in physiological and pathophysiological conditions (Fig. 2).

Hormonal regulation of PFC synaptic transmission

Stress hormones—Stress hormones exert complex and profound effects on the synaptic structure and function in PFC neurons (Fig. 2). Glucocorticoid action in the PFC shows a marked functional heterogeneity. Glucocorticoid receptor (GR) knockdown in IL induces compromised stress adaptation and depression-like behavior, while GR knockdown in PL

increases HPA axis responses to acute stress but does not affect stress sensitization or helplessness behavior⁹³, highlighting the region-specific impact of PFC on stress coping and emotional control.

Exposing animals to an acute stressor, such as forced swim, foot shock or restraint, produces significantly enhanced glutamatergic transmission in PFC circuitry⁹⁴⁻⁹⁷. One mechanism is related to the enhancement of readily releasable pool of glutamate vesicles via a non-genomic mechanism mediated by membrane receptors⁹⁵. Acute stress, via acting on GR, also induces a delayed potentiation of NMDAR- and AMPAR-mediated synaptic currents, which is correlated with the increased level of synaptic NMDAR and AMPAR subunits^{96,98}. Serum- and glucocorticoid-inducible kinases (SGKs), an immediate early gene activated by stress hormone, is shown to be involved by enhancing Rab4-mediated trafficking of glutamate receptors from early endosomes to plasma membrane in PFC neurons^{98,99}. The GR-induced upregulation of SGK and glutamatergic signaling in acutely stressed animals is blocked by inhibition of HDAC6, a unique member of the HDAC family that directly regulates the GR chaperone protein, heat shock protein 90 (HSP90)⁹⁷. Interestingly, reduced SGK expression is found in postmortem brains of PTSD patients, and inhibition of SGK in rat PFC produces helplessness- and anhedonia-like phenotypes¹⁰⁰.

Adhesion molecules that anchor glutamate receptors at the synaptic surface are also implicated in the acute stress-induced enhancement of GluR2 membrane trafficking and memory facilitation¹⁰¹. In addition, acute footshock stress increases spine density and induces dendritic remodeling in medial PFC, which can be partially blocked by chronic treatment with the antidepressant desipramine^{102,103}. This effect of stress and antidepressant is linked to the alteration of key genes involved in synaptic plasticity and spine structure¹⁰⁴.

In contrast to the positive effects of acute stress, chronic stress (e.g. 21-day restraint stress) produces impaired dendritic branching, atrophy and spine loss in PFC pyramidal neurons^{102,105}, and such structural reorganization is reversed after 3-week cessation of stress¹⁰⁶. Chronic stress impairs synaptic plasticity by reducing LTP induction in the hippocampus-PFC connection¹⁰⁷, and repeated social stress during mid-adolescence significantly decreases synaptic activity and intrinsic excitability of mPFC neurons¹⁰⁸. Chronic exposure to corticosterone also causes the reduction of NR2B and GluR2/3 subunit expression in ventromedial PFC¹⁰⁹.

A prominent loss of GluR1 and NR1 subunit expression has been found in PFC pyramidal neurons from repeatedly stressed animals, which leads to the depression of AMPAR- and NMDAR-mediated synaptic currents¹¹⁰. This stress-induced loss of glutamate receptor expression is attributable to the increased ubiquitin/proteasome-mediated degradation of GluR1 and NR1 that is controlled by E3 ubiquitin ligases Nedd4 and Fbx2, and inhibition of proteasomes or knockdown of these E3 ligases in PFC prevents the loss of glutamatergic responses and recognition memory in stressed animals¹¹⁰. The transcription of Nedd4 is upregulated by repeated stress via an epigenetic mechanism involving the elevated histone deacetylase 2 (HDAC2) and the ensuing suppression of histone methyltransferase Ehmt2 (also known as G9a) that catalyzes the repressive mark H3K9me2¹¹¹. The impairment of

glutamate receptors and excitatory transmission in PFC of chronically stressed animals is blocked by HDAC2 inhibitors ¹¹¹.

There are many additional molecules that have been implicated in governing the effects of chronic stress in PFC. One key player is the mTORC (mammalian target of rapamycin complex) signaling pathway. Decreased levels of mTORC are found in PFC of humans with major depressive disorder ¹¹², and the fast-acting antidepressant ketamine increases mTORC signaling in rat PFC ¹¹³. REDD1, an endogenous inhibitor of mTOR, shows the elevated expression in PFC of animals exposed to chronic unpredictable stress and PFC of post-partum depressed humans ¹¹⁴. REDD1 knockdown renders animals to have greater resilience to the chronic stress-induced spine shrinkage and AMPAR current reduction ¹¹⁴.

Neuropeptides

The neuropeptide precursor VGF plays a critical role in depression and antidepressant efficacy ¹¹⁵. Reduced levels of VGF have been found in PFC of MDD patients and PFC of chronically stressed mice ¹¹⁶. VGF in PFC regulates susceptibility to stress and the antidepressant response to ketamine, and infusion of VGF C-terminal peptide TLQP-62 to PFC produces sustained antidepressant responses ¹¹⁶.

Neuropeptide Y (NPY), a stress modulatory transmitter, has been associated with PTSD. NPY in IL cortex, acting on NPY Y1 receptors, increases inhibitory synaptic transmission onto IL projection neurons and dampens their excitability, resulting in the significant impairment of fear extinction memory ¹¹⁷.

The “prosocial” hormone oxytocin (OT) plays a key role in regulating social and emotional behaviors through a population of SST+ interneurons that express the oxytocin receptor (OxtrIN) in mPFC. Silencing OxtrIN of female mice or deleting Oxtr gene in mPFC results in sociosexual deficits ¹¹⁸, while OxtrIN in male mice regulate anxiety-related behaviors by interacting with the co-expressed corticotropin-releasing-hormone-binding protein (CRHBP), an antagonist of the stress hormone CRH ¹¹⁹ (Fig. 2).

PFC Dysregulation and Diseases

Transcriptomic meta-analyses of human cerebral cortex across major neuropsychiatric disorders, including autism (ASD), schizophrenia (SZ), bipolar disorder (BD) and depression (MDD), have found the shared transcriptional dysregulation underlying convergent molecular neuropathology, such as a gradient of synaptic gene down-regulation and astroglial gene up-regulation in ASD, SZ and BD (ASD > SZ = BD), and dysregulation of HPA-axis and hormonal signaling in MDD ¹²⁰. Synaptic plasticity deficits in PFC of animal models have been linked to clinical findings from human patients with frontal cortical dysfunction, including the decreased functional connectivity in prefrontal-limbic circuits, executive function and memory deficits, inflexible and maladaptive behaviors ¹²¹. In what follows, we will summarize mechanisms of synaptic transmission dysregulation in the PFC and pathophysiological implications in a few neurodevelopmental, neuropsychiatric and neurodegenerative diseases linked to the impairment of social, emotional, and cognitive processes.

Autism

Autism is a prevalent neurodevelopmental disorder characterized by core symptoms like social deficits and stereotypic behaviors. The importance of PFC in autism is demonstrated by structural, functional, and genomic studies. Postmortem studies have found focal patches of abnormal laminar cytoarchitecture and cortical disorganization of neurons, but not glia, in prefrontal and temporal cortical tissue from a majority of young children with autism, with the clearest signs of abnormal expression of excitatory neuronal markers in deep cortical layers 4 and 5¹²². Many of the high-level executive functions controlled by PFC are impaired in autism. Transcriptomic analysis of autistic brains has found 444 genes showing significant expression changes in PFC, but only 2 in cerebellum¹²³.

Haploinsufficiency of the *Shank3* gene, which encodes a scaffolding protein at postsynaptic density of glutamatergic synapses, has been causally linked to autism^{124,125}. High-resolution MRI has found that loss of *Shank3* in mice results in the disrupted local and long-range prefrontal and frontostriatal functional connectivity, which is predictive of social communication deficits¹²⁶. In PFC pyramidal neurons of *Shank3*-deficient mice, NMDAR function and synaptic distribution are significantly diminished, which is caused by a marked loss of actin filaments at glutamatergic synapses due to the altered Rac1/PAK/cofilin signaling¹²⁷. Inhibiting cofilin or activating Rac1 rescues the social deficits and NMDAR hypofunction in *Shank3*-deficient mice¹²⁷ (Fig. 3), suggesting that targeting actin regulators to restore actin-based NMDAR synaptic delivery could be a therapeutic option for autism¹²⁸. Chemogenetic activation of PFC pyramidal neurons in *Shank3*-deficient mice also restores social preference behaviors and elevates glutamatergic synaptic function¹²⁹. Moreover, the reduced synaptic plasticity in hippocampus-mPFC pathway and impaired social recognition memory and attention in *Shank3*-deficient rats are attenuated by oxytocin treatment¹³⁰.

Another prominent genetic link to autism spectrum disorders and intellectual disability is the microdeletion or microduplication of the human 16p11.2 gene locus^{131,132}. A 16p11.2 deletion mouse model, 16p11^{+/-}, exhibits NMDAR hypofunction in PFC pyramidal neurons¹³³. Chemogenetic activation of PFC pyramidal neurons leads to the amelioration of cognitive and social impairments and the restoration of NMDAR function in 16p11^{+/-} mice¹³³. On the other hand, a 16p11.2 duplication mouse model, 16p11^{dp/+}, exhibits deficient GABAergic synaptic transmission and elevated excitability in PFC pyramidal neurons¹³⁴. Restoring the expression of *Npas4*, a key regulator of GABA synapses^{135,136}, ameliorates the social and cognitive deficits, as well as GABAergic synaptic impairment and neuronal hyperexcitability in 16p11^{dp/+} mice¹³⁴. Synaptic dysfunction and excitation/inhibition imbalance is identified as a common pathophysiological feature of multiple ASD models¹³⁷⁻¹³⁹.

Large scale genetic screenings have revealed that many of the identified top-ranking autism risk factors are genes implicated in synaptic homeostasis, transcriptional regulation and chromatin remodeling pathways¹⁴⁰⁻¹⁴². Epigenomic studies show that PFC neurons from subjects with autism exhibit the altered H3K4me3 peaks at numerous genes regulating neuronal connectivity, social behaviors, and cognition, often in conjunction with altered

expression of the corresponding transcripts¹⁴³. A recent series of studies have shown that targeting epigenetic enzymes to adjust gene expression and ameliorate synaptic defects in PFC is a potential strategy to normalize behavioral phenotypes associated with autism^{144–147}.

In PFC of *Shank3*-deficient mice, the loss of histone acetylation and upregulation of HDAC2 have been identified¹⁴⁵. Systemic administration of the class I HDAC inhibitor romidepsin or MS-275 leads to the robust and persistent alleviation of social deficits, as well as the restoration of actin regulators and NMDAR function in PFC^{144,145}. A histone acetylome-wide association study (H3K27ac ChIP-seq) of human ASD postmortem samples also reveals common “epimutations” on genes involved in synaptic transmission, ion transport, and histone deacetylation¹⁴⁸. Moreover, the repressive histone mark H3K9me2 and its catalyzing enzymes EHMT1/2 are selectively increased in the PFC of *Shank3*-deficient mice and autistic human postmortem brains¹⁴⁶. Inhibition of EHMT1/2 rescues social deficits and restores PFC NMDAR function in *Shank3*-deficient mice via restoring the expression of plasticity gene *Arc*, which encodes the activity-regulated cytoskeleton-associated protein Arc¹⁴⁶. The nucleocytoplasmic shuttle protein involved in both cell adhesion and transcriptional regulation, β -catenin, is found to link the loss of Shank3 in the synapse to the upregulation of HDAC2 and EHMT1/2 transcription in the nucleus^{145,146} (Fig. 3).

Another identified high-risk factor for autism is the *Cullin 3 (Cul3)* gene¹⁴¹, which encodes a core component of the E3 ubiquitin ligase complex that mediates proteasomal degradation¹⁴⁹. Loss of *Cul3* in forebrain or PFC leads to social deficits and NMDAR hypofunction, while loss of *Cul3* in striatum leads to stereotypic behaviors and cell type-specific alteration of neuronal excitability in striatal circuits¹⁴⁷. One of the misregulated proteins resulting from forebrain *Cul3*-deficiency is Smyd3, a histone methyltransferase involved in gene transcription. Inhibition or knockdown of Smyd3 ameliorates social deficits and restores PFC NMDAR function in forebrain *Cul3*-deficient mice¹⁴⁷. These studies have demonstrated how aberrations in molecular and epigenetic pathways implicated in autism are interconnected.

Schizophrenia

Schizophrenia (SZ) is a chronic psychiatric disorder that is characterized by delusions, hallucinations, disorganized speech and behavior, and negative symptoms¹⁵⁰. SZ has been linked to both aberrant PFC development during embryonic stages and disrupted PFC maturation in later adolescence driven by environmental stressors, making SZ a unique disorder with two critical susceptibility periods¹⁵¹. SZ patients exhibit reduced gray matter in frontal cortex, evidenced by MRI studies^{152,153}. It has been suggested that SZ is driven by disrupted cortical synaptic pruning¹⁵⁴ because its symptoms tend to appear late in adolescence corresponding with the developmental period in which PFC connectivity undergoes maturation¹⁵⁵. One hypothesis is that psychosocial stress in late development drives microglial overactivation, leading to the increased synaptic pruning in PFC¹⁵⁶. In accordance with these theories, SZ patients display significant reductions in dendritic spine density in PFC¹⁵⁷, and lower density of perineuronal nets (PNN) - extracellular structures

that stabilize synapses, also suggesting synaptic loss or destabilization¹⁵⁸. SZ patients show reduced blood flow in PFC during task performance¹⁵⁹ and reduced functional connectivity between PFC and other brain regions when performing a cognitive task¹⁶⁰.

SZ etiology has a strong genetic component, and many high-risk SZ genes identified by GWAS studies are highly enriched in mid-frontal lobe¹⁶¹, form protein interactions in fetal dorsolateral (DL) and ventrolateral PFC¹⁶², and/or are functionally implicated in synaptic transmission^{162,163}. Proteomic analysis of SZ DLPFC samples identified 15 differentially expressed proteins, 7 of which were synaptic¹⁶⁴. These studies suggest synaptic dysfunction in PFC as a core mechanism in SZ.

The synaptic pathology of SZ in the PFC is complex, involving disrupted glutamatergic, GABAergic, dopaminergic, and serotonergic transmission (Fig. 4A). There is strong support for NMDA hypofunction in SZ, as treatment with NMDAR antagonists, such as MK-801 or phencyclidine, can induce SZ-like symptoms in both human subjects¹⁶⁵ and in animals¹⁶⁶. NMDAR-mediated connectivity between PFC and hippocampus is impaired in SZ, which is suggested as a mechanism underlying working memory deficits¹⁶⁷. Blocking NMDARs with MK-801 injection leads to the impairment of mPFC-dependent cognitive flexibility and hippocampus-mPFC pathway-dependent spatial working memory¹⁶⁸.

Paradoxically, MK-801 drives the increased release of glutamate in the mPFC, though the antipsychotic medications clozapine and haloperidol are both able to block MK-801-induced glutamate release in PFC of rats¹⁶⁹. NMDAR antagonists may elicit this paradoxical response by primarily blocking NMDA receptors on GABAergic interneurons, thereby promoting disinhibition of pyramidal neurons¹⁷⁰. It has thus been postulated that the NMDA hypofunction in SZ mainly occurs in cortical GABAergic interneurons¹⁶⁵. Postmortem schizophrenia studies have revealed supporting evidence¹⁷¹, including the reduced density of NR2A-expressing PV interneurons in cortical layers 3 and 4¹⁷² and the reduced density of GAD67- and NR2A-coexpressing neurons in layers 2 and 5 of anterior cingulate cortex¹⁷³.

In rats treated with NMDAR antagonists, PFC neurons display the elevated and irregular spiking activity and the reduced coordinated burst firing, suggesting that NMDA hypofunction in PFC may drive disorganized network activity¹⁷⁴. In agreement with this, monkeys performing a SZ-relevant cognitive task exhibit the reduced synchronous firing and disrupted connectivity in PFC neurons after the administration of an NMDAR antagonist¹⁷⁵. PFC-specific inhibition of either NMDA or GABA transmission produces working memory deficits in rats, suggesting that either system could contribute to working memory deficits in SZ¹⁷⁶. Several biochemical indicators of NMDA dysfunction are reported in SZ PFC, including the reduced expression of several synaptic plasticity-related genes¹⁷⁷, and the significantly lower postsynaptic expression of the NMDAR subunit NR1 and PSD95¹⁷⁸. Reduced expression of the presynaptic vesicle protein VAMP has also been reported in SZ PFC¹⁷⁹, while other presynaptic markers appear unchanged^{177,179}.

Several well-replicated cellular indications of disrupted GABAergic synaptic transmission have been reported in PFC of SZ patients, including the decreased GAD67 expression

and reduced gamma oscillations, suggesting deficient GABA synthesis and GABAergic synaptic transmission, respectively¹⁸⁰. While no change in the number of PV+ cells¹⁸¹ or the density of GABAergic synaptic inputs on DLPFC neurons¹⁸² is observed in SZ patients, the reduced PV expression is reported both at the individual cellular level¹⁸¹ and specifically within presynaptic boutons of PV+ basket cells¹⁸². Furthermore, an expression analysis of DLPFC from SZ patients indicated the reduced expression of several GABA-related genes, including neuropeptides and both presynaptic and postsynaptic markers¹⁸³. Inhibiting GABAergic transmission in PFC of rats produces several behavioral phenotypes mirroring SZ symptomology¹⁸⁴. The evidence implicating GABAergic deficits in PFC as a core mechanism in SZ-related cognitive dysfunction has been reviewed previously¹⁸⁵.

Dopamine modulation of PFC, which also plays a major role in working memory¹⁸⁶, is thought to contribute to PFC dysfunction in SZ. In a mouse model carrying a genetic risk factor for neuropsychiatric disorders, adolescent isolation stress induces DNA hypermethylation of the tyrosine hydroxylase (TH) gene in mesocortical dopaminergic neurons, causing the reduced TH expression and cortical dopamine release, leading to SZ-associated behavioral abnormalities¹⁸⁷. D2R activation leads to long-lasting NMDAR hypofunction, resulting in the profound disruption of functional connectivity between hippocampus and PFC¹⁶⁷. D2R overexpression in mouse striatum causes the reduced inhibitory synaptic input to PFC pyramidal neurons, suggesting that the deficit in PFC GABAergic function in schizophrenia could be secondary to alterations in the striatal dopamine system¹⁸⁸. On the other hand, D1R activation in PFC facilitates the maintenance of long-term potentiation (LTP) of glutamatergic transmission, as well as the induction of long-term depression (LTD) of glutamatergic transmission, indicating its bidirectional modulation of synaptic plasticity in mPFC¹⁸⁹. Computational models predict that an imbalance of D1R/D2R activation in the PFC may underlie the associated cognitive, positive and negative symptoms of SZ¹⁹⁰. Positron emission tomography studies indicate that radioligand binding to D1R is reduced in PFC of SZ patients, and the extent of the reduction correlates directly with the severity of SZ-related negative symptoms¹⁹¹. Further postmortem studies have confirmed the reduced D1R expression in PFC of SZ patients¹⁹².

In addition to dopamine, serotonin dysfunction in PFC is also implicated in SZ, as 5-HT receptors are the major targets of many atypical antipsychotics used to treat SZ, such as clozapine and olanzapine. A systematic review of literatures reported the increased expression of 5-HT_{1A} and the reduced expression of 5-HT_{2A} receptors in PFC of SZ patients¹⁹³. PET studies in SZ patients have similarly shown the reduced 5-HT_{2A} availability in frontal cortex¹⁹⁴. The novel antipsychotic drug lurasidone restores the diminished NMDAR function in PFC pyramidal neurons from the phencyclidine (PCP) model of schizophrenia via antagonizing 5-HT₇ receptors¹⁹⁵, which may underlie its effect on reversing cognitive impairment in SZ. The exact mechanisms by which serotonin dysfunction in PFC contributes to SZ pathophysiology remains to be further elucidated. Collectively, the existing evidence suggests a model whereby the disruption of NMDA and GABA transmission in PFC, which is partially driven by aberrant dopamine and serotonin neuromodulation, produces excitation/inhibition imbalance and network dysconnectivity in SZ (Fig. 4A).

Emerging studies have revealed the epigenetic alterations in SZ¹⁹⁶. ATAC-seq analysis of SZ DLPFC shows that genetic regions with high chromatin accessibility are highly enriched in heritable genetic risk factors for SZ¹⁹⁷. In agreement with this, two histone markers associated with transcriptional activation (H3K4me3 and H3K27ac) are enriched at SZ genetic risk variants¹⁹⁸. Broadly disrupted DNA methylation profiles are also reported in SZ PFC¹⁹⁹. Epigenetic dysregulation of 5-HT_{2A} receptor has been demonstrated in human frontal cortex²⁰⁰. In a rat model of SZ, abnormal epigenetic repression of the NMDAR subunit *Grin2b* in PFC drives glutamatergic synaptic deficits²⁰¹. Upregulation of *HDAC1* is found in PFC of human SZ patients and *Hdac1* overexpression in PFC is associated with SZ-like phenotypes in mice²⁰². These findings suggest that epigenetic dysregulation of selective genes may play an important role in SZ.

Depression

Substantial evidence indicates that mPFC dysfunction plays a critical role in the pathology of major depressive disorder (MDD)²⁰³. MDD patients display the reduced glucose metabolism in DLPFC²⁰⁴, and the significantly reduced mPFC volume spanning across dorsomedial PFC, ventromedial (VM) PFC and ACC²⁰⁵. While both DLPFC and VMPFC are involved in MDD, they play different roles: damage to VMPFC is associated with low levels of depression, and damage to DLPFC is associated with high levels of depression²⁰⁶. The PFC has also emerged as a hub for MDD treatment, as repeated transcranial magnetic stimulation (rTMS) therapy targeting the left PFC appears effective in mitigating depression symptoms²⁰⁷.

MDD is associated with aberrant synaptic transmission in PFC, affecting both GABA and glutamate systems (Fig. 4B). A meta-analysis of GWAS studies identified 102 genetic risk variants in MDD patients, many of which display high expression in frontal cortex and are enriched in biological pathways related to synaptic transmission²⁰⁸. Diminished expression of several synaptic genes, including CALM2, SYN1, RAB3A, RAB4B and TUBB4, is observed in PFC of MDD patients, along with reduced spine density in layers II/III of DLPFC²⁰⁹. Protein expression levels of the NMDA subunits NR2A/NR2B and PSD95 are also reduced in PFC of MDD patients²¹⁰, and RNA-sequencing analyses of postmortem DLPFC from MDD patients similarly revealed the downregulation of genes related to glutamatergic transmission²¹¹. Moreover, an optogenetic study reveals that activating D1R-, but not D2R-, expressing PFC pyramidal neurons produces rapid and long-lasting antidepressant and anxiolytic responses, and disruption of D1R activity blocks the rapid antidepressant effects of ketamine²¹².

In addition to the disrupted glutamatergic transmission, there is also evidence for GABAergic impairment in MDD. Microarray analyses of PFC tissue from MDD patients indicate the downregulation of genes related to GABAergic signaling, including multiple GABA_A receptor subunits²¹³. Additionally, protein levels of GAD67, the primary enzyme responsible for GABA synthesis, are reduced in MDD PFC, and PET imaging studies reveal lower GABA levels in PFC of MDD patients²¹⁴. RNA-seq of postmortem DLPFC tissue from individuals who died by suicide also revealed the downregulation of GABA_AR γ 2 subunit²¹⁵. Interestingly, mice carrying heterozygous deficiency of the GABA_AR γ 2

subunit in forebrain display depression-like behavioral phenotypes²¹⁶ and the reduced surface expression of NMDA and AMPA receptor subunits in mPFC that could be restored via ketamine treatment²¹⁷, suggesting that GABAergic impairment could affect glutamatergic signaling in MDD PFC. Studies in mice indicate that scopolamine, an effective antidepressant medication acting on muscarinic acetylcholine receptors, enacts its antidepressant effects via targeting somatostatin-expressing GABAergic interneurons in mPFC²¹⁸, further implicating the prefrontal cortical GABA system in MDD. The density of PNNs is also reduced in PFC of stressed mice²¹⁹ and rats²²⁰, suggesting that PNNs may be disrupted in MDD, similar to SZ.

The NMDAR antagonist ketamine produces rapid antidepressant effects in those with treatment-resistant depression²²¹, and its therapeutic efficacy appears to be dependent upon its effects on PFC, along with its connecting regions. In rodents, low doses of ketamine have been shown to drive the increased glutamate release²²² and glutamate cycling²²³ in PFC. Electrophysiological recordings similarly indicate that ketamine elevates the frequency of excitatory postsynaptic currents (EPSC) in mouse PFC pyramidal neurons²²⁴. In human MDD patients, ketamine administration similarly increases glutamate/glutamine cycling in PFC²²⁵. The paradoxical increase in glutamate activity driven by ketamine initially appeared to be mediated by the loss of NMDA-mediated excitation of GABA interneurons, resulting in disinhibition of pyramidal neurons¹⁷⁰ (Fig. 4B). However, deletion of the NMDAR subunit GluN2B from mPFC pyramidal neurons *in vivo* produces antidepressant-like effects, while also preventing ketamine's effects on behavior, EPSC and the induction of mTOR activation in mouse mPFC²²⁴, suggesting that ketamine enacts direct effects on pyramidal neurons via GluN2B antagonism.

The ketamine-induced elevation in PFC glutamate release promotes AMPA receptor activation, which is necessary for ketamine's antidepressant effects; pre-administration of the AMPAR receptor antagonist NBQX prevents ketamine's antidepressant-like behavioral effects in mice²²⁶. NBQX treatment also prevents ketamine's induction of mTOR signaling, suggesting that mTOR activation is mediated by AMPA receptor activation²²⁷. mTOR inhibition is sufficient to prevent the ketamine-dependent induction of synaptogenesis in PFC and antidepressant-like behavioral effects in rats¹¹³. The mTOR activation of BDNF and synaptogenesis in PFC appear to be involved in Ketamine's therapeutic function, because transgenic mice carrying a mutant form of BDNF that cannot translocate to dendrites do not display ketamine-dependent synaptogenesis nor antidepressant-like behavioral responses²²⁸. Notably, the significantly reduced protein expression level of mTOR and several downstream signaling molecules is reported in postmortem PFC tissue from depressed patients¹¹². Mice expressing a non-phosphorylatable mutant copy of the signaling molecule eIF4E (eukaryotic initiation factor 4E), which is activated downstream of mTORC1, display depression-like behaviors²²⁹, further implicating the mTOR signaling pathway in MDD. The ketamine metabolite hydroxynorketamine similarly produces antidepressant effects in mice when administered exclusively in the PFC, and this effect is dependent upon the activation of BDNF, and downstream TrkB and mTORC1 signaling²³⁰. Furthermore, direct activation of the mTORC1 pathway via NV-5138 produces antidepressant effects in rats, suggesting that mTORC1 activation alone may be sufficient to alleviate depressive symptoms²³¹.

Collectively, these studies suggest that in MDD patients, the PFC is characterized by diminished expression of glutamatergic and GABAergic receptors, accompanied by a reduction in dendritic spine density. Ketamine treatment thus enacts its therapeutic effects by transiently promoting glutamate release in PFC to activate AMPA receptors, which in turn activates the downstream mTOR signaling pathway and promotes BDNF expression, leading to synaptogenesis and elevated glutamatergic transmission (Fig. 4B).

In addition to the involvement of PFC synaptic dysregulation in depression, epigenetic changes have been described in PFC of individuals with MDD. Twenty genes are found to be differentially methylated in PFC of MDD patients from a genome-wide methylation analysis, including hypermethylation of *Grin2a*²³². HDAC inhibitor produces antidepressant-like effects in mice²³³. DNA methyltransferases have also been implicated in depression²³⁴. Elevated DNA methylation is observed in PFC of rats subjected to learned helplessness stress, which is reversed by antidepressant imipramine treatment²³⁵. Moreover, systemic administration of DNA methyltransferase inhibitors induces antidepressant-like effects in rats²³⁶. These findings suggest that pharmacological targeting of epigenetic enzymes may be a novel treatment strategy for depressive symptoms.

Alzheimer's Disease

PFC is one of the first regions to be affected in clinical AD, which may explain the early occurrence of the impairment of PFC-mediated cognitive processes, such as working memory and attention. Aging is the leading risk factor for developing AD, so many studies have focused on revealing neurobiological changes that affect synaptic integrity with aging and why aged brain is vulnerable to AD. In aged PFC, the cAMP/PKA pathway is disinhibited, and PKA inhibition provides an effective approach for treating age-related cognitive decline²³⁷. The marked loss of PFC persistent firing in aged monkeys is also partially restored by inhibiting cAMP signaling or blocking HCN or KCNQ channels²³⁸. Age-related increase in PKA phosphorylation of tau at serine 214 in monkey PFC is thought to confer risk for degeneration of glutamatergic synapses²³⁹. From aging monkey studies, it is found that PFC is particularly vulnerable to calcium dysregulation and tau phosphorylation²⁴⁰. The loss of thin spines in monkey PFC, which are particularly plastic and linked to learning, is selectively correlated with age-related cognitive impairment²⁴¹. A β infused into the monkey brain induces accelerated cortical aging by triggering the specific loss of dendritic thin spines in the PFC²⁴².

Cholinergic system is crucial for cognitive processes, and deficient acetylcholine (ACh) function has been implicated in AD. A major AD therapy is acetylcholinesterase (AChE) inhibitors, which act to enhance cholinergic function by prolonging the action of endogenously released ACh. AChE inhibitors produce a strong and persistent reduction of synaptic NMDAR responses in PFC pyramidal neurons via nicotinic ACh receptors²⁴³. Activation of muscarinic or nicotinic ACh receptors in PFC pyramidal neurons also enhances inhibitory synaptic transmission through PKC-dependent mechanisms^{244,245}. The cholinergic regulation of NMDA and GABA function is impaired in transgenic mice overexpressing mutant β -amyloid precursor protein (APP)^{243,245,246}. A β -induced loss of RACK1 (an anchoring protein for activated PKC) distribution in the membrane fraction

of cortical neurons is found to underlie the impairment of muscarinic regulation of PKC²⁴⁷. In aged monkeys with naturally occurring cholinergic depletion, low-dose muscarinic M1R stimulation enhances delay firing in dorsolateral PFC neurons and improves working memory via a mechanism involving KCNQ channels²⁴⁸. These studies suggest that restoring cholinergic regulation of PFC synaptic activity and neuronal excitability might help to treat AD-associated cognitive disorders.

The brain noradrenergic system is also critical for cognition and noradrenergic dysfunction is a critical early step in AD progression²⁴⁹. A recent study has found that β -amyloid oligomers bind to an allosteric site on α 2-ARs to redirect norepinephrine signaling to activate the pathogenic GSK3 β /tau cascade²⁵⁰. Guanfacine, a specific α 2-AR antagonist, has been used to treat cognitive disorders linked to PFC dysfunction²⁵¹.

Systematic search for global gene expression changes in PFC during the course of AD has found a temporally orchestrated increase of genes involved in synaptic activity during the very early pre-symptomatic stage, probably representing a coping mechanism against increased β -amyloid levels, and the decreased expression of these synaptic genes in later Braak stages, suggesting a reduction in synaptic activity that coincides with AD neuropathology and cognitive impairment²⁵². Studies of postmortem human brains have found the significant association between cognitive decline and the loss of synaptic proteins in PFC, such as SNAP25, SNAP47, SV2C, SYT2 and GRIA3^{253,254}, suggesting that these PFC synaptic markers are predictive molecular fingerprint for neurodegenerative diseases, and understanding the basis of synaptic impairment is the most effective route for early intervention and prevention of cognitive decline.

Both AD patients and symptomatic AD mouse models show impaired synaptic plasticity in PFC, which is related to the impaired NMDAR function²⁵⁵. The diminished transcription of NMDA and AMPA receptors in late-stage AD mouse models has been linked to the EHMT1/2-mediated repressive histone methylation at their promoters²⁵⁶. Treatment of AD models with specific EHMT1/2 inhibitors reverses the increased H3K9me2 enrichment at genes involved in neuronal signaling (e.g. *Grin2b* encoding NR2B subunit and *Gria2* encoding GluR2 subunit), restores glutamate receptor expression and excitatory synaptic function in PFC, and rescues the impaired recognition memory, working memory, and spatial memory²⁵⁶ (Fig. 5).

In addition to the downregulation of genes involved in synaptic transmission and synapse organization, there is also prominent upregulation of genes involved in cell stress, immune response activation and cell death in PFC of AD patients^{257–259}. A recent study has found that H3K4 trimethylation (H3K4me3), a histone mark for gene activation, is significantly elevated in PFC of human AD postmortem tissues and AD mouse models, and inhibiting H3K4-specific methyltransferases, including MLL1-4 (also named as KMT2A-D) and SETD1a/b, leads to the substantial recovery of glutamatergic synaptic function in PFC pyramidal neurons, and the significant improvement of memory-related behaviors in mutant Tau transgenic mice²⁶⁰. One of the top-ranking genes elevated by the abnormally high H3K4me3 in PFC of AD patients and mouse models is *SGK1*, which encodes the stress-responsive kinase SGK1. A short treatment with the specific SGK1 inhibitor results in the

significant reduction of hyper-phosphorylated tau (a pathological hallmark of AD) and the recovery of synaptic receptor expression and glutamatergic transmission in PFC, as well as the restoration of recognition and spatial memories, in mutant Tau transgenic mice²⁶⁰ (Fig. 5). These results suggest that targeting histone methylation enzymes may represent a novel therapeutic avenue for normalizing the aberrant epigenetic regulation of gene transcription in PFC that underlies cognitive deficits in AD.

Concluding Remarks

Overwhelming evidence has indicated that PFC is a uniquely important brain region for the highest level of executive function, which drives self-regulatory and goal-directed behaviors^{261–263}. Dysregulation of PFC synaptic transmission directly contributes to the impairment of social, affective, motivational, and cognitive function associated with brain disorders including autism, schizophrenia, depression and Alzheimer's disease. Studies in animal models have revealed critical neural circuits, biological pathways, and molecular players that converge to control the excitatory and inhibitory signals in PFC networks. Novel epigenetic mechanism-based strategies have been proposed as potential avenues of therapeutic intervention for mental diseases linked to PFC dysfunction.

There are many open questions that await to be further explored in future studies, and a few examples are listed as follows:

1. What makes PFC so special in terms of the organizational and cellular function? Circuit mapping with modern technologies have revealed the links of specific pathways and cell types to particular behavioral aspects. How specific and robust are such links? Is it likely that complex cognitive and emotional behaviors usually need to recruit multiple circuits and neuronal populations? What are the differential roles of PFC and its connecting regions in the control of these behaviors?
2. How does PFC integrate the influences of monoaminergic systems, stress hormones and neuropeptides in different conditions? What effects of these neuromodulators are unique to PFC synaptic function? How much does the aberrant modulation of PFC contribute to the pathophysiology of neurodevelopmental, neuropsychiatric and neurodegenerative diseases?
3. What are the convergent and divergent factors causing PFC synaptic dysfunction in autism, schizophrenia, depression, and Alzheimer's disease? Is PFC synaptic dysregulation directly linked to behavioral abnormalities in these illnesses?
4. How are the synaptic, epigenetic and transcriptomic alterations mechanistically connected in each of PFC-involved brain disorder? What is the translational potential of the epigenetics-based treatment strategies found in preclinical models for human patients with these disorders?

Acknowledgements:

We are grateful to former and current members in Dr. Yan's laboratory for their contributions to the original findings and NIH grants (MH108842, MH12237, DA037618, AG056060, AG064656 to Z.Y.) for their support of some of the work reviewed here.

References:

1. Bourgeois JP, Goldman-Rakic PS & Rakic P Synaptogenesis in the prefrontal cortex of rhesus monkeys. *Cerebral cortex* (New York, N.Y. : 1991) 4, 78–96 (1994).
2. Diamond A Executive functions. *Annu Rev Psychol* 64, 135–168 (2013). [PubMed: 23020641]
3. Stokes MG 'Activity-silent' working memory in prefrontal cortex: a dynamic coding framework. *Trends Cogn Sci* 19, 394–405 (2015). [PubMed: 26051384]
4. Fuster JM & Alexander GE Neuron activity related to short-term memory. *Science* 173, 652–654 (1971). [PubMed: 4998337]
5. Goldman-Rakic PS Cellular basis of working memory. *Neuron* 14, 477–485 (1995). [PubMed: 7695894]
6. Wang Y, et al. Heterogeneity in the pyramidal network of the medial prefrontal cortex. *Nature neuroscience* 9, 534–542 (2006). [PubMed: 16547512]
7. Compte A, Brunel N, Goldman-Rakic PS & Wang XJ Synaptic mechanisms and network dynamics underlying spatial working memory in a cortical network model. *Cerebral cortex* (New York, N.Y. : 1991) 10, 910–923 (2000).
8. Wang M, et al. NMDA receptors subserve persistent neuronal firing during working memory in dorsolateral prefrontal cortex. *Neuron* 77, 736–749 (2013). [PubMed: 23439125]
9. McCarthy G, et al. Functional magnetic resonance imaging of human prefrontal cortex activation during a spatial working memory task. *Proceedings of the National Academy of Sciences of the United States of America* 91, 8690–8694 (1994). [PubMed: 8078943]
10. Pardo JV, Fox PT & Raichle ME Localization of a human system for sustained attention by positron emission tomography. *Nature* 349, 61–64 (1991). [PubMed: 1985266]
11. Uylings HB, Groenewegen HJ & Kolb B Do rats have a prefrontal cortex? *Behavioural brain research* 146, 3–17 (2003). [PubMed: 14643455]
12. Ongür D & Price JL The organization of networks within the orbital and medial prefrontal cortex of rats, monkeys and humans. *Cerebral cortex* (New York, N.Y. : 1991) 10, 206–219 (2000).
13. Erlich JC, Bialek M & Brody CD A cortical substrate for memory-guided orienting in the rat. *Neuron* 72, 330–343 (2011). [PubMed: 22017991]
14. Baeg EH, et al. Dynamics of population code for working memory in the prefrontal cortex. *Neuron* 40, 177–188 (2003). [PubMed: 14527442]
15. Gabbott PL, Warner TA, Jays PR, Salway P & Busby SJ Prefrontal cortex in the rat: projections to subcortical autonomic, motor, and limbic centers. *The Journal of comparative neurology* 492, 145–177 (2005). [PubMed: 16196030]
16. Otis JM, et al. Prefrontal cortex output circuits guide reward seeking through divergent cue encoding. *Nature* 543, 103–107 (2017). [PubMed: 28225752]
17. Kim CK, et al. Molecular and Circuit-Dynamical Identification of Top-Down Neural Mechanisms for Restraint of Reward Seeking. *Cell* 170, 1013–1027.e1014 (2017). [PubMed: 28823561]
18. Narayanan NS & Laubach M Top-down control of motor cortex ensembles by dorsomedial prefrontal cortex. *Neuron* 52, 921–931 (2006). [PubMed: 17145511]
19. Franklin TB, et al. Prefrontal cortical control of a brainstem social behavior circuit. *Nature neuroscience* 20, 260–270 (2017). [PubMed: 28067904]
20. Hultman R, et al. Brain-wide Electrical Spatiotemporal Dynamics Encode Depression Vulnerability. *Cell* 173, 166–180.e114 (2018). [PubMed: 29502969]
21. Spellman T, et al. Hippocampal-prefrontal input supports spatial encoding in working memory. *Nature* 522, 309–314 (2015). [PubMed: 26053122]

22. Phillips ML, Robinson HA & Pozzo-Miller L Ventral hippocampal projections to the medial prefrontal cortex regulate social memory. *Elife* 8(2019).
23. Collins DP, Anastasiades PG, Marlin JJ & Carter AG Reciprocal Circuits Linking the Prefrontal Cortex with Dorsal and Ventral Thalamic Nuclei. *Neuron* 98, 366–379.e364 (2018). [PubMed: 29628187]
24. Schmitt LI, et al. Thalamic amplification of cortical connectivity sustains attentional control. *Nature* 545, 219–223 (2017). [PubMed: 28467827]
25. Wimmer RD, et al. Thalamic control of sensory selection in divided attention. *Nature* 526, 705–709 (2015). [PubMed: 26503050]
26. Burgos-Robles A, et al. Amygdala inputs to prefrontal cortex guide behavior amid conflicting cues of reward and punishment. *Nature neuroscience* 20, 824–835 (2017). [PubMed: 28436980]
27. Krimer LS & Goldman-Rakic PS Prefrontal microcircuits: membrane properties and excitatory input of local, medium, and wide arbor interneurons. *The Journal of neuroscience : the official journal of the Society for Neuroscience* 21, 3788–3796 (2001). [PubMed: 11356867]
28. Gao WJ, Wang Y & Goldman-Rakic PS Dopamine modulation of perisomatic and peridendritic inhibition in prefrontal cortex. *The Journal of neuroscience : the official journal of the Society for Neuroscience* 23, 1622–1630 (2003). [PubMed: 12629166]
29. Kvitsiani D, et al. Distinct behavioural and network correlates of two interneuron types in prefrontal cortex. *Nature* 498, 363–366 (2013). [PubMed: 23708967]
30. Pi HJ, et al. Cortical interneurons that specialize in disinhibitory control. *Nature* 503, 521–524 (2013). [PubMed: 24097352]
31. Obermayer J, et al. Prefrontal cortical ChAT-VIP interneurons provide local excitation by cholinergic synaptic transmission and control attention. *Nature communications* 10, 5280 (2019).
32. Murugan M, et al. Combined Social and Spatial Coding in a Descending Projection from the Prefrontal Cortex. *Cell* 171, 1663–1677.e1616 (2017). [PubMed: 29224779]
33. Sun Q, et al. Ventral Hippocampal-Prefrontal Interaction Affects Social Behavior via Parvalbumin Positive Neurons in the Medial Prefrontal Cortex. *iScience* 23, 100894 (2020). [PubMed: 32092698]
34. Ferguson BR & Gao WJ Thalamic Control of Cognition and Social Behavior Via Regulation of Gamma-Aminobutyric Acidergic Signaling and Excitation/Inhibition Balance in the Medial Prefrontal Cortex. *Biol Psychiatry* 83, 657–669 (2018). [PubMed: 29373121]
35. McGarry LM & Carter AG Inhibitory Gating of Basolateral Amygdala Inputs to the Prefrontal Cortex. *The Journal of neuroscience : the official journal of the Society for Neuroscience* 36, 9391–9406 (2016). [PubMed: 27605614]
36. Dilgen J, Tejada HA & O'Donnell P Amygdala inputs drive feedforward inhibition in the medial prefrontal cortex. *J Neurophysiol* 110, 221–229 (2013). [PubMed: 23657281]
37. Pinto L & Dan Y Cell-Type-Specific Activity in Prefrontal Cortex during Goal-Directed Behavior. *Neuron* 87, 437–450 (2015). [PubMed: 26143660]
38. Scheggia D, et al. Somatostatin interneurons in the prefrontal cortex control affective state discrimination in mice. *Nature neuroscience* 23, 47–60 (2020). [PubMed: 31844317]
39. Abbas AI, et al. Somatostatin Interneurons Facilitate Hippocampal-Prefrontal Synchrony and Prefrontal Spatial Encoding. *Neuron* 100, 926–939.e923 (2018). [PubMed: 30318409]
40. Kamigaki T & Dan Y Delay activity of specific prefrontal interneuron subtypes modulates memory-guided behavior. *Nature neuroscience* 20, 854–863 (2017). [PubMed: 28436982]
41. Kim D, et al. Distinct Roles of Parvalbumin- and Somatostatin-Expressing Interneurons in Working Memory. *Neuron* 92, 902–915 (2016). [PubMed: 27746132]
42. Xu H, et al. A Disinhibitory Microcircuit Mediates Conditioned Social Fear in the Prefrontal Cortex. *Neuron* 102, 668–682.e665 (2019). [PubMed: 30898376]
43. Marek R, et al. Hippocampus-driven feed-forward inhibition of the prefrontal cortex mediates relapse of extinguished fear. *Nature neuroscience* 21, 384–392 (2018). [PubMed: 29403033]
44. Lee AT, et al. VIP Interneurons Contribute to Avoidance Behavior by Regulating Information Flow across Hippocampal-Prefrontal Networks. *Neuron* 102, 1223–1234.e1224 (2019). [PubMed: 31053407]

45. Robbins TW & Arnsten AF The neuropsychopharmacology of fronto-executive function: monoaminergic modulation. *Annual review of neuroscience* 32, 267–287 (2009).
46. Arnsten AF Catecholamine influences on dorsolateral prefrontal cortical networks. *Biol Psychiatry* 69, e89–99 (2011). [PubMed: 21489408]
47. Berridge CW, et al. Methylphenidate preferentially increases catecholamine neurotransmission within the prefrontal cortex at low doses that enhance cognitive function. *Biol Psychiatry* 60, 1111–1120 (2006). [PubMed: 16806100]
48. Cheng J, et al. Methylphenidate exerts dose-dependent effects on glutamate receptors and behaviors. *Biol Psychiatry* 76, 953–962 (2014). [PubMed: 24832867]
49. Smiley JF & Goldman-Rakic PS Heterogeneous targets of dopamine synapses in monkey prefrontal cortex demonstrated by serial section electron microscopy: a laminar analysis using the silver-enhanced diaminobenzidine sulfide (SEDS) immunolabeling technique. *Cerebral cortex (New York, N.Y. : 1991)* 3, 223–238 (1993).
50. Gao WJ, Krimer LS & Goldman-Rakic PS Presynaptic regulation of recurrent excitation by D1 receptors in prefrontal circuits. *Proceedings of the National Academy of Sciences of the United States of America* 98, 295–300 (2001). [PubMed: 11134520]
51. Paspalas CD & Goldman-Rakic PS Presynaptic D1 dopamine receptors in primate prefrontal cortex: target-specific expression in the glutamatergic synapse. *The Journal of neuroscience : the official journal of the Society for Neuroscience* 25, 1260–1267 (2005). [PubMed: 15689564]
52. Gao WJ & Goldman-Rakic PS Selective modulation of excitatory and inhibitory microcircuits by dopamine. *Proceedings of the National Academy of Sciences of the United States of America* 100, 2836–2841 (2003). [PubMed: 12591942]
53. Wang Y & Goldman-Rakic PS D2 receptor regulation of synaptic burst firing in prefrontal cortical pyramidal neurons. *Proceedings of the National Academy of Sciences of the United States of America* 101, 5093–5098 (2004). [PubMed: 15051874]
54. Gamo NJ, et al. Stress Impairs Prefrontal Cortical Function via D1 Dopamine Receptor Interactions With Hyperpolarization-Activated Cyclic Nucleotide-Gated Channels. *Biol Psychiatry* 78, 860–870 (2015). [PubMed: 25731884]
55. Zhong P, Qin L & Yan Z Dopamine Differentially Regulates Response Dynamics of Prefrontal Cortical Principal Neurons and Interneurons to Optogenetic Stimulation of Inputs from Ventral Tegmental Area. *Cerebral cortex (New York, N.Y. : 1991)* (2020).
56. Seeman P, Guan HC & Van Tol HH Dopamine D4 receptors elevated in schizophrenia. *Nature* 365, 441–445 (1993). [PubMed: 8413587]
57. LaHoste GJ, et al. Dopamine D4 receptor gene polymorphism is associated with attention deficit hyperactivity disorder. *Mol Psychiatry* 1, 121–124 (1996). [PubMed: 9118321]
58. Gu Z, Jiang Q, Yuen EY & Yan Z Activation of dopamine D4 receptors induces synaptic translocation of Ca²⁺/calmodulin-dependent protein kinase II in cultured prefrontal cortical neurons. *Molecular pharmacology* 69, 813–822 (2006). [PubMed: 16365279]
59. Gu Z & Yan Z Bidirectional regulation of Ca²⁺/calmodulin-dependent protein kinase II activity by dopamine D4 receptors in prefrontal cortex. *Molecular pharmacology* 66, 948–955 (2004). [PubMed: 15229297]
60. Wang X, Zhong P, Gu Z & Yan Z Regulation of NMDA receptors by dopamine D4 signaling in prefrontal cortex. *The Journal of neuroscience : the official journal of the Society for Neuroscience* 23, 9852–9861 (2003). [PubMed: 14586014]
61. Wang X, et al. Aberrant regulation of NMDA receptors by dopamine D4 signaling in rats after phencyclidine exposure. *Mol Cell Neurosci* 31, 15–25 (2006). [PubMed: 16198123]
62. Yuen EY, Zhong P & Yan Z Homeostatic regulation of glutamatergic transmission by dopamine D4 receptors. *Proceedings of the National Academy of Sciences of the United States of America* 107, 22308–22313 (2010). [PubMed: 21135234]
63. Yuen EY & Yan Z Cellular mechanisms for dopamine D4 receptor-induced homeostatic regulation of alpha-amino-3-hydroxy-5-methyl-4-isoxazolepropionic acid (AMPA) receptors. *The Journal of biological chemistry* 286, 24957–24965 (2011). [PubMed: 21622557]

64. Yuen EY & Yan Z Dopamine D4 receptors regulate AMPA receptor trafficking and glutamatergic transmission in GABAergic interneurons of prefrontal cortex. *The Journal of neuroscience : the official journal of the Society for Neuroscience* 29, 550–562 (2009). [PubMed: 19144855]
65. Zhong P & Yan Z Distinct Physiological Effects of Dopamine D4 Receptors on Prefrontal Cortical Pyramidal Neurons and Fast-Spiking Interneurons. *Cerebral cortex (New York, N.Y. : 1991)* 26, 180–191 (2016).
66. Tan T, et al. Stress Exposure in Dopamine D4 Receptor Knockout Mice Induces Schizophrenia-Like Behaviors via Disruption of GABAergic Transmission. *Schizophr Bull* 45, 1012–1023 (2019). [PubMed: 30476265]
67. Ebstein RP, et al. Dopamine D4 receptor (D4DR) exon III polymorphism associated with the human personality trait of Novelty Seeking. *Nat Genet* 12, 78–80 (1996). [PubMed: 8528256]
68. Qin L, et al. The ADHD-linked human dopamine D4 receptor variant D4.7 induces over-suppression of NMDA receptor function in prefrontal cortex. *Neurobiology of disease* 95, 194–203 (2016). [PubMed: 27475724]
69. Zhong P, Liu W & Yan Z Aberrant regulation of synchronous network activity by the attention-deficit/hyperactivity disorder-associated human dopamine D4 receptor variant D4.7 in the prefrontal cortex. *The Journal of physiology* 594, 135–147 (2016). [PubMed: 26541360]
70. Datta D, et al. Noradrenergic α 1-Adrenoceptor Actions in the Primate Dorsolateral Prefrontal Cortex. *The Journal of neuroscience : the official journal of the Society for Neuroscience* 39, 2722–2734 (2019). [PubMed: 30755491]
71. Wang M, et al. Alpha2A-adrenoceptors strengthen working memory networks by inhibiting cAMP-HCN channel signaling in prefrontal cortex. *Cell* 129, 397–410 (2007). [PubMed: 17448997]
72. Paspalas CD, Wang M & Arnsten AF Constellation of HCN channels and cAMP regulating proteins in dendritic spines of the primate prefrontal cortex: potential substrate for working memory deficits in schizophrenia. *Cerebral cortex (New York, N.Y. : 1991)* 23, 1643–1654 (2013).
73. Liu W, et al. Adrenergic modulation of NMDA receptors in prefrontal cortex is differentially regulated by RGS proteins and spinophilin. *Proceedings of the National Academy of Sciences of the United States of America* 103, 18338–18343 (2006). [PubMed: 17101972]
74. De Vries L, Zheng B, Fischer T, Elenko E & Farquhar MG The regulator of G protein signaling family. *Annu Rev Pharmacol Toxicol* 40, 235–271 (2000). [PubMed: 10836135]
75. Chowdari KV, et al. Association and linkage analyses of RGS4 polymorphisms in schizophrenia. *Hum Mol Genet* 11, 1373–1380 (2002). [PubMed: 12023979]
76. Williams NM, et al. Support for RGS4 as a susceptibility gene for schizophrenia. *Biol Psychiatry* 55, 192–195 (2004). [PubMed: 14732600]
77. Davidson RJ, Putnam KM & Larson CL Dysfunction in the neural circuitry of emotion regulation--a possible prelude to violence. *Science* 289, 591–594 (2000). [PubMed: 10915615]
78. Leonardo ED & Hen R Genetics of affective and anxiety disorders. *Annu Rev Psychol* 57, 117–137 (2006). [PubMed: 16318591]
79. Hoyer D, Hannon JP & Martin GR Molecular, pharmacological and functional diversity of 5-HT receptors. *Pharmacol Biochem Behav* 71, 533–554 (2002). [PubMed: 11888546]
80. Cai X, Flores-Hernandez J, Feng J & Yan Z Activity-dependent bidirectional regulation of GABA(A) receptor channels by the 5-HT(4) receptor-mediated signalling in rat prefrontal cortical pyramidal neurons. *The Journal of physiology* 540, 743–759 (2002). [PubMed: 11986365]
81. Yan Z Regulation of GABAergic inhibition by serotonin signaling in prefrontal cortex: molecular mechanisms and functional implications. *Molecular neurobiology* 26, 203–216 (2002). [PubMed: 12428756]
82. Yuen EY, Jiang Q, Chen P, Feng J & Yan Z Activation of 5-HT2A/C receptors counteracts 5-HT1A regulation of n-methyl-D-aspartate receptor channels in pyramidal neurons of prefrontal cortex. *The Journal of biological chemistry* 283, 17194–17204 (2008). [PubMed: 18442977]
83. Yuen EY, et al. Serotonin 5-HT1A receptors regulate NMDA receptor channels through a microtubule-dependent mechanism. *The Journal of neuroscience : the official journal of the Society for Neuroscience* 25, 5488–5501 (2005). [PubMed: 15944377]

84. Yuen EY, et al. Synergistic regulation of glutamatergic transmission by serotonin and norepinephrine reuptake inhibitors in prefrontal cortical neurons. *The Journal of biological chemistry* 289, 25177–25185 (2014). [PubMed: 25056951]
85. Zhong P, Liu W, Gu Z & Yan Z Serotonin facilitates long-term depression induction in prefrontal cortex via p38 MAPK/Rab5-mediated enhancement of AMPA receptor internalization. *The Journal of physiology* 586, 4465–4479 (2008). [PubMed: 18653660]
86. Zhong P & Yan Z Chronic antidepressant treatment alters serotonergic regulation of GABA transmission in prefrontal cortical pyramidal neurons. *Neuroscience* 129, 65–73 (2004). [PubMed: 15489029]
87. Feng J, Cai X, Zhao J & Yan Z Serotonin receptors modulate GABA(A) receptor channels through activation of anchored protein kinase C in prefrontal cortical neurons. *The Journal of neuroscience : the official journal of the Society for Neuroscience* 21, 6502–6511 (2001). [PubMed: 11517239]
88. Gu Z, Jiang Q & Yan Z RGS4 modulates serotonin signaling in prefrontal cortex and links to serotonin dysfunction in a rat model of schizophrenia. *Molecular pharmacology* 71, 1030–1039 (2007). [PubMed: 17220354]
89. Tan H, Zhong P & Yan Z Corticotropin-releasing factor and acute stress prolongs serotonergic regulation of GABA transmission in prefrontal cortical pyramidal neurons. *The Journal of neuroscience : the official journal of the Society for Neuroscience* 24, 5000–5008 (2004). [PubMed: 15163692]
90. Komlósi G, et al. Fluoxetine (prozac) and serotonin act on excitatory synaptic transmission to suppress single layer 2/3 pyramidal neuron-triggered cell assemblies in the human prefrontal cortex. *The Journal of neuroscience : the official journal of the Society for Neuroscience* 32, 16369–16378 (2012). [PubMed: 23152619]
91. Barre A, et al. Presynaptic serotonin 2A receptors modulate thalamocortical plasticity and associative learning. *Proceedings of the National Academy of Sciences of the United States of America* 113, E1382–1391 (2016). [PubMed: 26903620]
92. Athilingam JC, Ben-Shalom R, Keeshen CM, Sohal VS & Bender KJ Serotonin enhances excitability and gamma frequency temporal integration in mouse prefrontal fast-spiking interneurons. *Elife* 6(2017).
93. McKlveen JM, et al. Role of prefrontal cortex glucocorticoid receptors in stress and emotion. *Biol Psychiatry* 74, 672–679 (2013). [PubMed: 23683655]
94. Wang M, Perova Z, Arenkiel BR & Li B Synaptic modifications in the medial prefrontal cortex in susceptibility and resilience to stress. *The Journal of neuroscience : the official journal of the Society for Neuroscience* 34, 7485–7492 (2014). [PubMed: 24872553]
95. Treccani G, et al. Stress and corticosterone increase the readily releasable pool of glutamate vesicles in synaptic terminals of prefrontal and frontal cortex. *Mol Psychiatry* 19, 433–443 (2014). [PubMed: 24535456]
96. Yuen EY, et al. Acute stress enhances glutamatergic transmission in prefrontal cortex and facilitates working memory. *Proceedings of the National Academy of Sciences of the United States of America* 106, 14075–14079 (2009). [PubMed: 19666502]
97. Lee JB, et al. Histone deacetylase 6 gates the synaptic action of acute stress in prefrontal cortex. *The Journal of physiology* 590, 1535–1546 (2012). [PubMed: 22331421]
98. Yuen EY, et al. Mechanisms for acute stress-induced enhancement of glutamatergic transmission and working memory. *Mol Psychiatry* 16, 156–170 (2011). [PubMed: 20458323]
99. Liu W, Yuen EY & Yan Z The stress hormone corticosterone increases synaptic alpha-amino-3-hydroxy-5-methyl-4-isoxazolepropionic acid (AMPA) receptors via serum- and glucocorticoid-inducible kinase (SGK) regulation of the GDI-Rab4 complex. *The Journal of biological chemistry* 285, 6101–6108 (2010). [PubMed: 20051515]
100. Licznarski P, et al. Decreased SGK1 Expression and Function Contributes to Behavioral Deficits Induced by Traumatic Stress. *PLoS Biol* 13, e1002282 (2015). [PubMed: 26506154]
101. Conboy L & Sandi C Stress at learning facilitates memory formation by regulating AMPA receptor trafficking through a glucocorticoid action. *Neuropsychopharmacology* 35, 674–685 (2010). [PubMed: 19890264]

102. Musazzi L, Treccani G & Popoli M Functional and structural remodeling of glutamate synapses in prefrontal and frontal cortex induced by behavioral stress. *Front Psychiatry* 6, 60 (2015). [PubMed: 25964763]
103. Nava N, et al. Chronic desipramine prevents acute stress-induced reorganization of medial prefrontal cortex architecture by blocking glutamate vesicle accumulation and excitatory synapse increase. *Int J Neuropsychopharmacol* 18(2014).
104. Nava N, et al. The expression of plasticity-related genes in an acute model of stress is modulated by chronic desipramine in a time-dependent manner within medial prefrontal cortex. *Eur Neuropsychopharmacol* 27, 19–28 (2017). [PubMed: 27890541]
105. Radley JJ, et al. Repeated stress induces dendritic spine loss in the rat medial prefrontal cortex. *Cerebral cortex (New York, N.Y. : 1991)* 16, 313–320 (2006).
106. Radley JJ, et al. Reversibility of apical dendritic retraction in the rat medial prefrontal cortex following repeated stress. *Exp Neurol* 196, 199–203 (2005). [PubMed: 16095592]
107. Cerqueira JJ, Mailliet F, Almeida OF, Jay TM & Sousa N The prefrontal cortex as a key target of the maladaptive response to stress. *The Journal of neuroscience : the official journal of the Society for Neuroscience* 27, 2781–2787 (2007). [PubMed: 17360899]
108. Urban KR & Valentino RJ Age- and Sex-Dependent Impact of Repeated Social Stress on Intrinsic and Synaptic Excitability of the Rat Prefrontal Cortex. *Cerebral cortex (New York, N.Y. : 1991)* 27, 244–253 (2017).
109. Gourley SL, Kedves AT, Olausson P & Taylor JR A history of corticosterone exposure regulates fear extinction and cortical NR2B, GluR2/3, and BDNF. *Neuropsychopharmacology* 34, 707–716 (2009). [PubMed: 18719621]
110. Yuen EY, et al. Repeated stress causes cognitive impairment by suppressing glutamate receptor expression and function in prefrontal cortex. *Neuron* 73, 962–977 (2012). [PubMed: 22405206]
111. Wei J, et al. Histone Modification of Nedd4 Ubiquitin Ligase Controls the Loss of AMPA Receptors and Cognitive Impairment Induced by Repeated Stress. *The Journal of neuroscience : the official journal of the Society for Neuroscience* 36, 2119–2130 (2016). [PubMed: 26888924]
112. Jernigan CS, et al. The mTOR signaling pathway in the prefrontal cortex is compromised in major depressive disorder. *Progress in neuro-psychopharmacology & biological psychiatry* 35, 1774–1779 (2011). [PubMed: 21635931]
113. Li N, et al. mTOR-dependent synapse formation underlies the rapid antidepressant effects of NMDA antagonists. *Science* 329, 959–964 (2010). [PubMed: 20724638]
114. Ota KT, et al. REDD1 is essential for stress-induced synaptic loss and depressive behavior. *Nat Med* 20, 531–535 (2014). [PubMed: 24728411]
115. Jiang C, et al. VGF function in depression and antidepressant efficacy. *Mol Psychiatry* 23, 1632–1642 (2018). [PubMed: 29158577]
116. Jiang C, et al. VGF and its C-terminal peptide TLQP-62 in ventromedial prefrontal cortex regulate depression-related behaviors and the response to ketamine. *Neuropsychopharmacology* 44, 971–981 (2019). [PubMed: 30504797]
117. Vollmer LL, et al. Neuropeptide Y Impairs Retrieval of Extinguished Fear and Modulates Excitability of Neurons in the Infralimbic Prefrontal Cortex. *The Journal of neuroscience : the official journal of the Society for Neuroscience* 36, 1306–1315 (2016). [PubMed: 26818517]
118. Nakajima M, Görlich A & Heintz N Oxytocin modulates female sociosexual behavior through a specific class of prefrontal cortical interneurons. *Cell* 159, 295–305 (2014). [PubMed: 25303526]
119. Li K, Nakajima M, Ibañez-Tallon I & Heintz N A Cortical Circuit for Sexually Dimorphic Oxytocin-Dependent Anxiety Behaviors. *Cell* 167, 60–72.e11 (2016). [PubMed: 27641503]
120. Gandal MJ, et al. Shared molecular neuropathology across major psychiatric disorders parallels polygenic overlap. *Science* 359, 693–697 (2018). [PubMed: 29439242]
121. Price RB & Duman R Neuroplasticity in cognitive and psychological mechanisms of depression: an integrative model. *Mol Psychiatry* 25, 530–543 (2020). [PubMed: 31801966]
122. Stoner R, et al. Patches of disorganization in the neocortex of children with autism. *N Engl J Med* 370, 1209–1219 (2014). [PubMed: 24670167]
123. Voineagu I, et al. Transcriptomic analysis of autistic brain reveals convergent molecular pathology. *Nature* 474, 380–384 (2011). [PubMed: 21614001]

124. Bonaglia MC, et al. Disruption of the ProSAP2 gene in a t(12;22)(q24.1;q13.3) is associated with the 22q13.3 deletion syndrome. *Am J Hum Genet* 69, 261–268 (2001). [PubMed: 11431708]
125. Betancur C & Buxbaum JD SHANK3 haploinsufficiency: a “common” but underdiagnosed highly penetrant monogenic cause of autism spectrum disorders. *Mol Autism* 4, 17 (2013). [PubMed: 23758743]
126. Pagani M, et al. Deletion of Autism Risk Gene Shank3 Disrupts Prefrontal Connectivity. *The Journal of neuroscience : the official journal of the Society for Neuroscience* 39, 5299–5310 (2019). [PubMed: 31061091]
127. Duffney LJ, et al. Autism-like Deficits in Shank3-Deficient Mice Are Rescued by Targeting Actin Regulators. *Cell Rep* 11, 1400–1413 (2015). [PubMed: 26027926]
128. Yan Z, Kim E, Datta D, Lewis DA & Soderling SH Synaptic Actin Dysregulation, a Convergent Mechanism of Mental Disorders? *The Journal of neuroscience : the official journal of the Society for Neuroscience* 36, 11411–11417 (2016). [PubMed: 27911743]
129. Qin L, Ma K & Yan Z Chemogenetic Activation of Prefrontal Cortex in Shank3-Deficient Mice Ameliorates Social Deficits, NMDAR Hypofunction, and Sgk2 Downregulation. *iScience* 17, 24–35 (2019). [PubMed: 31247448]
130. Harony-Nicolas H, et al. Oxytocin improves behavioral and electrophysiological deficits in a novel Shank3-deficient rat. *Elife* 6(2017).
131. Weiss LA, et al. Association between microdeletion and microduplication at 16p11.2 and autism. *N Engl J Med* 358, 667–675 (2008). [PubMed: 18184952]
132. Rein B & Yan Z 16p11.2 Copy Number Variations and Neurodevelopmental Disorders. *Trends Neurosci* 43, 886–901 (2020). [PubMed: 32993859]
133. Wang W, et al. Chemogenetic Activation of Prefrontal Cortex Rescues Synaptic and Behavioral Deficits in a Mouse Model of 16p11.2 Deletion Syndrome. *The Journal of neuroscience : the official journal of the Society for Neuroscience* 38, 5939–5948 (2018). [PubMed: 29853627]
134. Rein B, et al. Reversal of synaptic and behavioral deficits in a 16p11.2 duplication mouse model via restoration of the GABA synapse regulator Npas4. *Mol Psychiatry* (2020).
135. Bloodgood BL, Sharma N, Browne HA, Trepman AZ & Greenberg ME The activity-dependent transcription factor NPAS4 regulates domain-specific inhibition. *Nature* 503, 121–125 (2013). [PubMed: 24201284]
136. Lin Y, et al. Activity-dependent regulation of inhibitory synapse development by Npas4. *Nature* 455, 1198–1204 (2008). [PubMed: 18815592]
137. Lee E, Lee J & Kim E Excitation/Inhibition Imbalance in Animal Models of Autism Spectrum Disorders. *Biol Psychiatry* 81, 838–847 (2017). [PubMed: 27450033]
138. Spratt PWE, et al. The Autism-Associated Gene Scn2a Contributes to Dendritic Excitability and Synaptic Function in the Prefrontal Cortex. *Neuron* 103, 673–685.e675 (2019). [PubMed: 31230762]
139. Lazaro MT, et al. Reduced Prefrontal Synaptic Connectivity and Disturbed Oscillatory Population Dynamics in the CNTNAP2 Model of Autism. *Cell Rep* 27, 2567–2578.e2566 (2019). [PubMed: 31141683]
140. Satterstrom FK, et al. Large-Scale Exome Sequencing Study Implicates Both Developmental and Functional Changes in the Neurobiology of Autism. *Cell* 180, 568–584.e523 (2020). [PubMed: 31981491]
141. De Rubeis S, et al. Synaptic, transcriptional and chromatin genes disrupted in autism. *Nature* 515, 209–215 (2014). [PubMed: 25363760]
142. Coe BP, et al. Neurodevelopmental disease genes implicated by de novo mutation and copy number variation morbidity. *Nat Genet* 51, 106–116 (2019). [PubMed: 30559488]
143. Shulha HP, et al. Epigenetic Signatures of Autism: Trimethylated H3K4 Landscapes in Prefrontal Neurons. *Archives of General Psychiatry* 69, 314–324 (2012). [PubMed: 22065254]
144. Ma K, et al. Histone deacetylase inhibitor MS-275 restores social and synaptic function in a Shank3-deficient mouse model of autism. *Neuropsychopharmacology* 43, 1779–1788 (2018). [PubMed: 29760409]
145. Qin L, et al. Social deficits in Shank3-deficient mouse models of autism are rescued by histone deacetylase (HDAC) inhibition. *Nature neuroscience* 21, 564–575 (2018). [PubMed: 29531362]

146. Wang ZJ, et al. Amelioration of autism-like social deficits by targeting histone methyltransferases EHMT1/2 in Shank3-deficient mice. *Mol Psychiatry* (2019).
147. Rapanelli M, et al. Behavioral, circuitry, and molecular aberrations by region-specific deficiency of the high-risk autism gene Cul3. *Mol Psychiatry* (2019).
148. Sun W, et al. Histone Acetylome-wide Association Study of Autism Spectrum Disorder. *Cell* 167, 1385–1397.e1311 (2016). [PubMed: 27863250]
149. Genschik P, Sumara I & Lechner E The emerging family of CULLIN3-RING ubiquitin ligases (CRL3s): cellular functions and disease implications. *EMBO J* 32, 2307–2320 (2013). [PubMed: 23912815]
150. American Psychiatric Association. *Diagnostic and Statistical Manual of Mental Disorders: DSM-5*. 5th ed., (Arlington: American Psychiatric Association, 2013).
151. Selemon LD & Zecevic N Schizophrenia: a tale of two critical periods for prefrontal cortical development. *Translational psychiatry* 5, e623 (2015). [PubMed: 26285133]
152. Sanfilipo M, et al. Volumetric measure of the frontal and temporal lobe regions in schizophrenia: relationship to negative symptoms. *Arch Gen Psychiatry* 57, 471–480 (2000). [PubMed: 10807487]
153. Goldstein JM, et al. Cortical abnormalities in schizophrenia identified by structural magnetic resonance imaging. *Arch Gen Psychiatry* 56, 537–547 (1999). [PubMed: 10359468]
154. Feinberg I Cortical pruning and the development of schizophrenia. *Schizophr Bull* 16, 567–570 (1990). [PubMed: 2077635]
155. Lewis DA Development of the prefrontal cortex during adolescence: insights into vulnerable neural circuits in schizophrenia. *Neuropsychopharmacology* 16, 385–398 (1997). [PubMed: 9165494]
156. Howes OD & McCutcheon R Inflammation and the neural diathesis-stress hypothesis of schizophrenia: a reconceptualization. *Translational psychiatry* 7, e1024 (2017). [PubMed: 28170004]
157. Glausier JR & Lewis DA Dendritic spine pathology in schizophrenia. *Neuroscience* 251, 90–107 (2013). [PubMed: 22546337]
158. Mauney SA, et al. Developmental pattern of perineuronal nets in the human prefrontal cortex and their deficit in schizophrenia. *Biol Psychiatry* 74, 427–435 (2013). [PubMed: 23790226]
159. Goldman-Rakic PS & Selemon LD Functional and anatomical aspects of prefrontal pathology in schizophrenia. *Schizophr Bull* 23, 437–458 (1997). [PubMed: 9327508]
160. Fornito A, Yücel M, Dean B, Wood SJ & Pantelis C Anatomical abnormalities of the anterior cingulate cortex in schizophrenia: bridging the gap between neuroimaging and neuropathology. *Schizophr Bull* 35, 973–993 (2009). [PubMed: 18436528]
161. Schizophrenia Working Group of the Psychiatric Genomics, C. Biological insights from 108 schizophrenia-associated genetic loci. *Nature* 511, 421–427 (2014). [PubMed: 25056061]
162. Gulsuner S, et al. Spatial and temporal mapping of de novo mutations in schizophrenia to a fetal prefrontal cortical network. *Cell* 154, 518–529 (2013). [PubMed: 23911319]
163. Jaffe AE, et al. Developmental and genetic regulation of the human cortex transcriptome illuminate schizophrenia pathogenesis. *Nature neuroscience* 21, 1117–1125 (2018). [PubMed: 30050107]
164. Pennington K, et al. Prominent synaptic and metabolic abnormalities revealed by proteomic analysis of the dorsolateral prefrontal cortex in schizophrenia and bipolar disorder. *Mol Psychiatry* 13, 1102–1117 (2008). [PubMed: 17938637]
165. Nakazawa K, Jeevakumar V & Nakao K Spatial and temporal boundaries of NMDA receptor hypofunction leading to schizophrenia. *NPJ Schizophr* 3, 7 (2017). [PubMed: 28560253]
166. Kehrer C, Maziashvili N, Dugladze T & Gloveli T Altered Excitatory-Inhibitory Balance in the NMDA-Hypofunction Model of Schizophrenia. *Front Mol Neurosci* 1, 6 (2008). [PubMed: 18946539]
167. Banks PJ, et al. Disruption of hippocampal-prefrontal cortex activity by dopamine D2R-dependent LTD of NMDAR transmission. *Proceedings of the National Academy of Sciences of the United States of America* 112, 11096–11101 (2015). [PubMed: 26286993]

168. Blot K, et al. Modulation of hippocampus-prefrontal cortex synaptic transmission and disruption of executive cognitive functions by MK-801. *Cerebral cortex (New York, N.Y. : 1991)* 25, 1348–1361 (2015).
169. López-Gil X, et al. Clozapine and haloperidol differently suppress the MK-801-increased glutamatergic and serotonergic transmission in the medial prefrontal cortex of the rat. *Neuropsychopharmacology* 32, 2087–2097 (2007). [PubMed: 17356574]
170. Homayoun H & Moghaddam B NMDA receptor hypofunction produces opposite effects on prefrontal cortex interneurons and pyramidal neurons. *The Journal of neuroscience : the official journal of the Society for Neuroscience* 27, 11496–11500 (2007). [PubMed: 17959792]
171. Cohen SM, Tsien RW, Goff DC & Halassa MM The impact of NMDA receptor hypofunction on GABAergic neurons in the pathophysiology of schizophrenia. *Schizophr Res* 167, 98–107 (2015). [PubMed: 25583246]
172. Bitanihirwe BK, Lim MP, Kelley JF, Kaneko T & Woo TU Glutamatergic deficits and parvalbumin-containing inhibitory neurons in the prefrontal cortex in schizophrenia. *BMC Psychiatry* 9, 71 (2009). [PubMed: 19917116]
173. Woo TU, Walsh JP & Benes FM Density of glutamic acid decarboxylase 67 messenger RNA-containing neurons that express the N-methyl-D-aspartate receptor subunit NR2A in the anterior cingulate cortex in schizophrenia and bipolar disorder. *Arch Gen Psychiatry* 61, 649–657 (2004). [PubMed: 15237077]
174. Jackson ME, Homayoun H & Moghaddam B NMDA receptor hypofunction produces concomitant firing rate potentiation and burst activity reduction in the prefrontal cortex. *Proceedings of the National Academy of Sciences of the United States of America* 101, 8467–8472 (2004). [PubMed: 15159546]
175. Zick JL, et al. Blocking NMDAR Disrupts Spike Timing and Decouples Monkey Prefrontal Circuits: Implications for Activity-Dependent Disconnection in Schizophrenia. *Neuron* 98, 1243–1255.e1245 (2018). [PubMed: 29861281]
176. Auger ML & Floresco SB Prefrontal cortical GABAergic and NMDA glutamatergic regulation of delayed responding. *Neuropharmacology* 113, 10–20 (2017). [PubMed: 27678413]
177. Fung SJ, Sivagnanasundaram S & Weickert CS Lack of change in markers of presynaptic terminal abundance alongside subtle reductions in markers of presynaptic terminal plasticity in prefrontal cortex of schizophrenia patients. *Biol Psychiatry* 69, 71–79 (2011). [PubMed: 21145444]
178. Catts VS, Derminio DS, Hahn CG & Weickert CS Postsynaptic density levels of the NMDA receptor NR1 subunit and PSD-95 protein in prefrontal cortex from people with schizophrenia. *NPJ Schizophr* 1, 15037 (2015). [PubMed: 27336043]
179. Halim ND, et al. Presynaptic proteins in the prefrontal cortex of patients with schizophrenia and rats with abnormal prefrontal development. *Mol Psychiatry* 8, 797–810 (2003). [PubMed: 12931207]
180. Lewis DA, Fish KN, Arion D & Gonzalez-Burgos G Perisomatic inhibition and cortical circuit dysfunction in schizophrenia. *Current opinion in neurobiology* 21, 866–872 (2011). [PubMed: 21680173]
181. Hashimoto T, et al. Gene expression deficits in a subclass of GABA neurons in the prefrontal cortex of subjects with schizophrenia. *The Journal of neuroscience : the official journal of the Society for Neuroscience* 23, 6315–6326 (2003). [PubMed: 12867516]
182. Glausier JR, Fish KN & Lewis DA Altered parvalbumin basket cell inputs in the dorsolateral prefrontal cortex of schizophrenia subjects. *Mol Psychiatry* 19, 30–36 (2014). [PubMed: 24217255]
183. Hashimoto T, et al. Alterations in GABA-related transcriptome in the dorsolateral prefrontal cortex of subjects with schizophrenia. *Mol Psychiatry* 13, 147–161 (2008). [PubMed: 17471287]
184. Enomoto T, Tse MT & Floresco SB Reducing prefrontal gamma-aminobutyric acid activity induces cognitive, behavioral, and dopaminergic abnormalities that resemble schizophrenia. *Biol Psychiatry* 69, 432–441 (2011). [PubMed: 21146155]
185. Tse MT, Piantadosi PT & Floresco SB Prefrontal cortical gamma-aminobutyric acid transmission and cognitive function: drawing links to schizophrenia from preclinical research. *Biol Psychiatry* 77, 929–939 (2015). [PubMed: 25442792]

186. Seamans JK & Yang CR The principal features and mechanisms of dopamine modulation in the prefrontal cortex. *Progress in neurobiology* 74, 1–58 (2004). [PubMed: 15381316]
187. Niwa M, et al. Adolescent stress-induced epigenetic control of dopaminergic neurons via glucocorticoids. *Science* 339, 335–339 (2013). [PubMed: 23329051]
188. Li YC, Kellendonk C, Simpson EH, Kandel ER & Gao WJ D2 receptor overexpression in the striatum leads to a deficit in inhibitory transmission and dopamine sensitivity in mouse prefrontal cortex. *Proceedings of the National Academy of Sciences of the United States of America* 108, 12107–12112 (2011). [PubMed: 21730148]
189. Huang YY, Simpson E, Kellendonk C & Kandel ER Genetic evidence for the bidirectional modulation of synaptic plasticity in the prefrontal cortex by D1 receptors. *Proceedings of the National Academy of Sciences of the United States of America* 101, 3236–3241 (2004). [PubMed: 14981263]
190. Durstewitz D & Seamans JK The dual-state theory of prefrontal cortex dopamine function with relevance to catechol-o-methyltransferase genotypes and schizophrenia. *Biol Psychiatry* 64, 739–749 (2008). [PubMed: 18620336]
191. Okubo Y, et al. Decreased prefrontal dopamine D1 receptors in schizophrenia revealed by PET. *Nature* 385, 634–636 (1997). [PubMed: 9024661]
192. Kaalund SS, et al. Contrasting changes in DRD1 and DRD2 splice variant expression in schizophrenia and affective disorders, and associations with SNPs in postmortem brain. *Mol Psychiatry* 19, 1258–1266 (2014). [PubMed: 24322206]
193. Selvaraj S, Arnone D, Cappai A & Howes O Alterations in the serotonin system in schizophrenia: a systematic review and meta-analysis of postmortem and molecular imaging studies. *Neurosci Biobehav Rev* 45, 233–245 (2014). [PubMed: 24971825]
194. Takano H Cognitive Function and Monoamine Neurotransmission in Schizophrenia: Evidence From Positron Emission Tomography Studies. *Front Psychiatry* 9, 228 (2018). [PubMed: 29896132]
195. Yuen EY, et al. The novel antipsychotic drug lurasidone enhances N-methyl-D-aspartate receptor-mediated synaptic responses. *Molecular pharmacology* 81, 113–119 (2012). [PubMed: 22072817]
196. Rajarajan P, Jiang Y, Kassim BS & Akbarian S Chromosomal Conformations and Epigenomic Regulation in Schizophrenia. *Prog Mol Biol Transl Sci* 157, 21–40 (2018). [PubMed: 29933951]
197. Bryois J, et al. Evaluation of chromatin accessibility in prefrontal cortex of individuals with schizophrenia. *Nature communications* 9, 3121 (2018).
198. Girdhar K, et al. Cell-specific histone modification maps in the human frontal lobe link schizophrenia risk to the neuronal epigenome. *Nature neuroscience* 21, 1126–1136 (2018). [PubMed: 30038276]
199. Lee SA & Huang KC Epigenetic profiling of human brain differential DNA methylation networks in schizophrenia. *BMC Med Genomics* 9, 68 (2016). [PubMed: 28117656]
200. Abdolmaleky HM, et al. Epigenetic dysregulation of HTR2A in the brain of patients with schizophrenia and bipolar disorder. *Schizophr Res* 129, 183–190 (2011). [PubMed: 21550210]
201. Gulchina Y, Xu SJ, Snyder MA, Elefant F & Gao WJ Epigenetic mechanisms underlying NMDA receptor hypofunction in the prefrontal cortex of juvenile animals in the MAM model for schizophrenia. *J Neurochem* 143, 320–333 (2017). [PubMed: 28628228]
202. Bahari-Javan S, et al. HDAC1 links early life stress to schizophrenia-like phenotypes. *Proceedings of the National Academy of Sciences of the United States of America* 114, E4686–E4694 (2017). [PubMed: 28533418]
203. Koenigs M & Grafman J The functional neuroanatomy of depression: distinct roles for ventromedial and dorsolateral prefrontal cortex. *Behavioural brain research* 201, 239–243 (2009). [PubMed: 19428640]
204. Baxter LR Jr., et al. Reduction of prefrontal cortex glucose metabolism common to three types of depression. *Arch Gen Psychiatry* 46, 243–250 (1989). [PubMed: 2784046]
205. Belleau EL, Treadway MT & Pizzagalli DA The Impact of Stress and Major Depressive Disorder on Hippocampal and Medial Prefrontal Cortex Morphology. *Biol Psychiatry* 85, 443–453 (2019). [PubMed: 30470559]

206. Koenigs M, et al. Distinct regions of prefrontal cortex mediate resistance and vulnerability to depression. *The Journal of neuroscience : the official journal of the Society for Neuroscience* 28, 12341–12348 (2008). [PubMed: 19020027]
207. Perera T, et al. The Clinical TMS Society Consensus Review and Treatment Recommendations for TMS Therapy for Major Depressive Disorder. *Brain Stimul* 9, 336–346 (2016). [PubMed: 27090022]
208. Howard DM, et al. Genome-wide meta-analysis of depression identifies 102 independent variants and highlights the importance of the prefrontal brain regions. *Nature neuroscience* 22, 343–352 (2019). [PubMed: 30718901]
209. Kang HJ, et al. Decreased expression of synapse-related genes and loss of synapses in major depressive disorder. *Nat Med* 18, 1413–1417 (2012). [PubMed: 22885997]
210. Feyissa AM, Chandran A, Stockmeier CA & Karolewicz B Reduced levels of NR2A and NR2B subunits of NMDA receptor and PSD-95 in the prefrontal cortex in major depression. *Progress in neuro-psychopharmacology & biological psychiatry* 33, 70–75 (2009). [PubMed: 18992785]
211. Pantazatos SP, et al. Whole-transcriptome brain expression and exon-usage profiling in major depression and suicide: evidence for altered glial, endothelial and ATPase activity. *Mol Psychiatry* 22, 760–773 (2017). [PubMed: 27528462]
212. Hare BD, et al. Optogenetic stimulation of medial prefrontal cortex Drd1 neurons produces rapid and long-lasting antidepressant effects. *Nature communications* 10, 223 (2019).
213. Klempner TA, et al. Altered expression of genes involved in ATP biosynthesis and GABAergic neurotransmission in the ventral prefrontal cortex of suicides with and without major depression. *Mol Psychiatry* 14, 175–189 (2009). [PubMed: 17938633]
214. Fogaca MV & Duman RS Cortical GABAergic Dysfunction in Stress and Depression: New Insights for Therapeutic Interventions. *Front Cell Neurosci* 13, 87 (2019). [PubMed: 30914923]
215. Yin H, et al. A pilot integrative genomics study of GABA and glutamate neurotransmitter systems in suicide, suicidal behavior, and major depressive disorder. *Am J Med Genet B Neuropsychiatr Genet* 171B, 414–426 (2016). [PubMed: 26892569]
216. Earnheart JC, et al. GABAergic control of adult hippocampal neurogenesis in relation to behavior indicative of trait anxiety and depression states. *The Journal of neuroscience : the official journal of the Society for Neuroscience* 27, 3845–3854 (2007). [PubMed: 17409249]
217. Ren Z, et al. Bidirectional Homeostatic Regulation of a Depression-Related Brain State by Gamma-Aminobutyric Acidergic Deficits and Ketamine Treatment. *Biol Psychiatry* 80, 457–468 (2016). [PubMed: 27062563]
218. Wohleb ES, et al. GABA interneurons mediate the rapid antidepressant-like effects of scopolamine. *The Journal of clinical investigation* 126, 2482–2494 (2016). [PubMed: 27270172]
219. Ueno H, et al. Juvenile stress induces behavioral change and affects perineuronal net formation in juvenile mice. *BMC Neurosci* 19, 41 (2018). [PubMed: 30012101]
220. Yu Z, et al. Decreased Density of Perineuronal Net in Prelimbic Cortex Is Linked to Depressive-Like Behavior in Young-Aged Rats. *Front Mol Neurosci* 13, 4 (2020). [PubMed: 32116542]
221. Abdallah CG, Sanacora G, Duman RS & Krystal JH Ketamine and rapid-acting antidepressants: a window into a new neurobiology for mood disorder therapeutics. *Annual review of medicine* 66, 509–523 (2015).
222. Moghaddam B, Adams B, Verma A & Daly D Activation of glutamatergic neurotransmission by ketamine: a novel step in the pathway from NMDA receptor blockade to dopaminergic and cognitive disruptions associated with the prefrontal cortex. *The Journal of neuroscience : the official journal of the Society for Neuroscience* 17, 2921–2927 (1997). [PubMed: 9092613]
223. Chowdhury GM, et al. Transiently increased glutamate cycling in rat PFC is associated with rapid onset of antidepressant-like effects. *Mol Psychiatry* 22, 120–126 (2017). [PubMed: 27067013]
224. Miller OH, et al. GluN2B-containing NMDA receptors regulate depression-like behavior and are critical for the rapid antidepressant actions of ketamine. *Elife* 3, e03581 (2014). [PubMed: 25340958]
225. Abdallah CG, et al. The effects of ketamine on prefrontal glutamate neurotransmission in healthy and depressed subjects. *Neuropsychopharmacology* 43, 2154–2160 (2018). [PubMed: 29977074]

226. Maeng S, et al. Cellular mechanisms underlying the antidepressant effects of ketamine: role of alpha-amino-3-hydroxy-5-methylisoxazole-4-propionic acid receptors. *Biol Psychiatry* 63, 349–352 (2008). [PubMed: 17643398]
227. Zhou W, et al. Ketamine-induced antidepressant effects are associated with AMPA receptor-mediated upregulation of mTOR and BDNF in rat hippocampus and prefrontal cortex. *Eur Psychiatry* 29, 419–423 (2014). [PubMed: 24321772]
228. Liu RJ, et al. Brain-derived neurotrophic factor Val66Met allele impairs basal and ketamine-stimulated synaptogenesis in prefrontal cortex. *Biol Psychiatry* 71, 996–1005 (2012). [PubMed: 22036038]
229. Aguilar-Valles A, et al. Translational control of depression-like behavior via phosphorylation of eukaryotic translation initiation factor 4E. *Nature communications* 9, 2459 (2018).
230. Fukumoto K, et al. Activity-dependent brain-derived neurotrophic factor signaling is required for the antidepressant actions of (2R,6R)-hydroxynorketamine. *Proceedings of the National Academy of Sciences of the United States of America* 116, 297–302 (2019). [PubMed: 30559184]
231. Hasegawa Y, Zhu X & Kamiya A NV-5138 as a fast-acting antidepressant via direct activation of mTORC1 signaling. *The Journal of clinical investigation* 129, 2207–2209 (2019). [PubMed: 31107245]
232. Kaut O, et al. Aberrant NMDA receptor DNA methylation detected by epigenome-wide analysis of hippocampus and prefrontal cortex in major depression. *Eur Arch Psychiatry Clin Neurosci* 265, 331–341 (2015). [PubMed: 25571874]
233. Schroeder FA, Lin CL, Crusio WE & Akbarian S Antidepressant-like effects of the histone deacetylase inhibitor, sodium butyrate, in the mouse. *Biol Psychiatry* 62, 55–64 (2007). [PubMed: 16945350]
234. Duan Z & Lu J DNA Methyltransferases in Depression: An Update. *Front Psychiatry* 11, 538683 (2020). [PubMed: 33101076]
235. Sales AJ & Joca SRL Antidepressant administration modulates stress-induced DNA methylation and DNA methyltransferase expression in rat prefrontal cortex and hippocampus. *Behavioural brain research* 343, 8–15 (2018). [PubMed: 29378290]
236. Sales AJ, et al. Antidepressant-like effect induced by systemic and intra-hippocampal administration of DNA methylation inhibitors. *Br J Pharmacol* 164, 1711–1721 (2011). [PubMed: 21585346]
237. Ramos BP, et al. Dysregulation of protein kinase a signaling in the aged prefrontal cortex: new strategy for treating age-related cognitive decline. *Neuron* 40, 835–845 (2003). [PubMed: 14622586]
238. Wang M, et al. Neuronal basis of age-related working memory decline. *Nature* 476, 210–213 (2011). [PubMed: 21796118]
239. Carlyle BC, et al. cAMP-PKA phosphorylation of tau confers risk for degeneration in aging association cortex. *Proceedings of the National Academy of Sciences of the United States of America* 111, 5036–5041 (2014). [PubMed: 24707050]
240. Arnsten AFT, et al. Alzheimer's-like pathology in aging rhesus macaques: Unique opportunity to study the etiology and treatment of Alzheimer's disease. *Proceedings of the National Academy of Sciences of the United States of America* 116, 26230–26238 (2019).
241. Dumitriu D, et al. Selective changes in thin spine density and morphology in monkey prefrontal cortex correlate with aging-related cognitive impairment. *The Journal of neuroscience : the official journal of the Society for Neuroscience* 30, 7507–7515 (2010). [PubMed: 20519525]
242. Beckman D, et al. Oligomeric A β in the monkey brain impacts synaptic integrity and induces accelerated cortical aging. *Proceedings of the National Academy of Sciences of the United States of America* 116, 26239–26246 (2019).
243. Chen G, et al. Regulation of the NMDA receptor-mediated synaptic response by acetylcholinesterase inhibitors and its impairment in an animal model of Alzheimer's disease. *Neurobiology of aging* 29, 1795–1804 (2008). [PubMed: 17555845]

244. Ma XH, Zhong P, Gu Z, Feng J & Yan Z Muscarinic potentiation of GABA(A) receptor currents is gated by insulin signaling in the prefrontal cortex. *The Journal of neuroscience : the official journal of the Society for Neuroscience* 23, 1159–1168 (2003). [PubMed: 12598604]
245. Chen GJ, Xiong Z & Yan Z A β impairs nicotinic regulation of inhibitory synaptic transmission and interneuron excitability in prefrontal cortex. *Molecular neurodegeneration* 8, 3 (2013). [PubMed: 23327202]
246. Zhong P, et al. Impaired modulation of GABAergic transmission by muscarinic receptors in a mouse transgenic model of Alzheimer's disease. *The Journal of biological chemistry* 278, 26888–26896 (2003). [PubMed: 12746438]
247. Liu W, Dou F, Feng J & Yan Z RACK1 is involved in β -amyloid impairment of muscarinic regulation of GABAergic transmission. *Neurobiology of aging* 32, 1818–1826 (2011).
248. Galvin VC, et al. Muscarinic M1 Receptors Modulate Working Memory Performance and Activity via KCNQ Potassium Channels in the Primate Prefrontal Cortex. *Neuron* 106, 649–661.e644 (2020). [PubMed: 32197063]
249. Rorabaugh JM, et al. Chemogenetic locus coeruleus activation restores reversal learning in a rat model of Alzheimer's disease. *Brain* 140, 3023–3038 (2017). [PubMed: 29053824]
250. Zhang F, et al. β -amyloid redirects norepinephrine signaling to activate the pathogenic GSK3 β /tau cascade. *Sci Transl Med* 12(2020).
251. Arnsten AF & Wang M Targeting Prefrontal Cortical Systems for Drug Development: Potential Therapies for Cognitive Disorders. *Annu Rev Pharmacol Toxicol* 56, 339–360 (2016). [PubMed: 26738476]
252. Bossers K, et al. Concerted changes in transcripts in the prefrontal cortex precede neuropathology in Alzheimer's disease. *Brain* 133, 3699–3723 (2010). [PubMed: 20889584]
253. Berezki E, et al. Synaptic markers of cognitive decline in neurodegenerative diseases: a proteomic approach. *Brain* 141, 582–595 (2018). [PubMed: 29324989]
254. Berezki E, et al. Synaptic proteins predict cognitive decline in Alzheimer's disease and Lewy body dementia. *Alzheimer's & dementia : the journal of the Alzheimer's Association* 12, 1149–1158 (2016).
255. Battaglia F, et al. Cortical plasticity in Alzheimer's disease in humans and rodents. *Biol Psychiatry* 62, 1405–1412 (2007). [PubMed: 17651702]
256. Zheng Y, et al. Inhibition of EHMT1/2 rescues synaptic and cognitive functions for Alzheimer's disease. *Brain* 142, 787–807 (2019). [PubMed: 30668640]
257. Mathys H, et al. Single-cell transcriptomic analysis of Alzheimer's disease. *Nature* 570, 332–337 (2019). [PubMed: 31042697]
258. Zhang B, et al. Integrated systems approach identifies genetic nodes and networks in late-onset Alzheimer's disease. *Cell* 153, 707–720 (2013). [PubMed: 23622250]
259. Zhou Y, et al. Human and mouse single-nucleus transcriptomics reveal TREM2-dependent and TREM2-independent cellular responses in Alzheimer's disease. *Nat Med* 26, 131–142 (2020). [PubMed: 31932797]
260. Cao Q, et al. Targeting histone K4 trimethylation for treatment of cognitive and synaptic deficits in mouse models of Alzheimer's disease. *Sci Adv* 6(2020).
261. McEwen BS & Morrison JH The brain on stress: vulnerability and plasticity of the prefrontal cortex over the life course. *Neuron* 79, 16–29 (2013). [PubMed: 23849196]
262. Popoli M, Yan Z, McEwen BS & Sanacora G The stressed synapse: the impact of stress and glucocorticoids on glutamate transmission. *Nat Rev Neurosci* 13, 22–37 (2011). [PubMed: 22127301]
263. Arnsten AF Stress weakens prefrontal networks: molecular insults to higher cognition. *Nature neuroscience* 18, 1376–1385 (2015). [PubMed: 26404712]

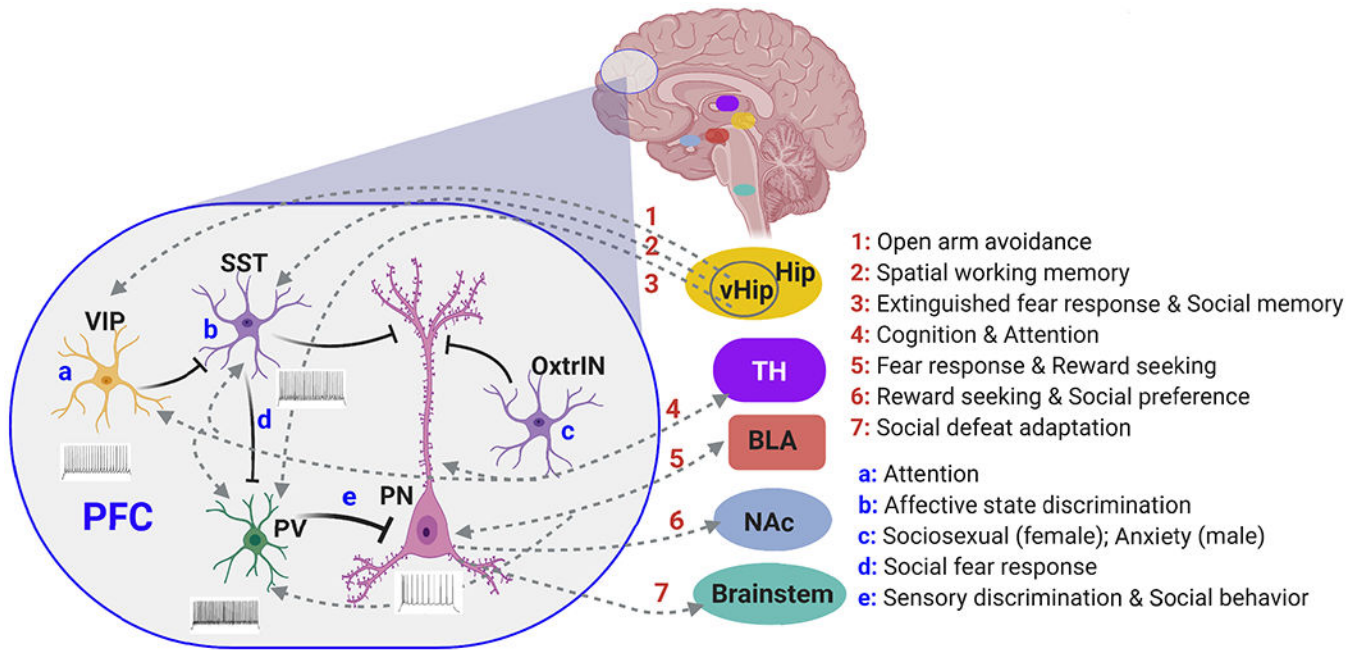


Figure 1. Plot of PFC organization highlighting the functional mapping of some long-range and local circuits of PFC. VIP+ interneurons (VIP) in PFC sends inhibitory inputs to SST+ interneurons (SST), which causes disinhibition of PV+ interneurons (PV), resulting in the strong somatic inhibition and weak dendritic inhibition of pyramidal neurons (PN). PFC interneurons and PN are innervated by hippocampus (HIP) or ventral HIP (vHIP), thalamus (TH) and basolateral amygdala (BLA), while PN send output to TH, BLA, nucleus accumbens (NAc) and brainstem. Some behavioral correlates of these neuronal circuits are listed, along with the functional role of VIP+ or SST+ interneurons, as well as a subtype of SST+ interneurons expressing oxytocin receptor (OxtrIN).

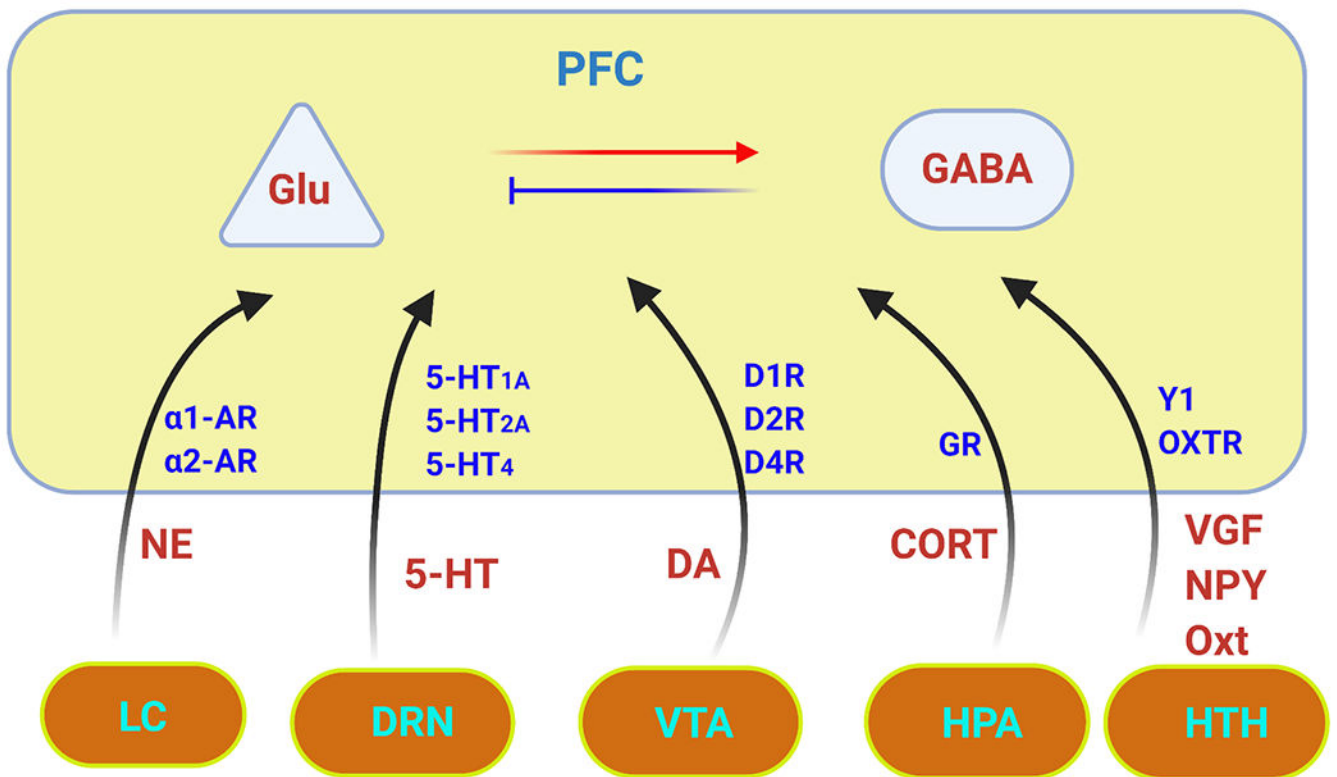


Figure 2.

Plot of PFC regulation illustrating some neurochemical influences on glutamatergic (Glu) excitation and GABAergic (GABA) inhibition in PFC neurons. The major modulators include dopamine (DA) from ventral tegmental area (VTA), serotonin (5-HT) from dorsal raphe (DRN), norepinephrine (NE) from locus coeruleus (LC), corticosterone (CORT) stress hormone from hypothalamic–pituitary–adrenal (HPA) axis, and neuropeptides, such as VGF nerve growth factor (VGF), Neuropeptide Y (NPY), and oxytocin (OT), from hypothalamus (HTH). These monoaminergic and hormonal modulations are achieved by activating corresponding receptors. The complex intracellular signaling pathways initiated by each neuromodulator can be found in relevant papers or previous reviews.

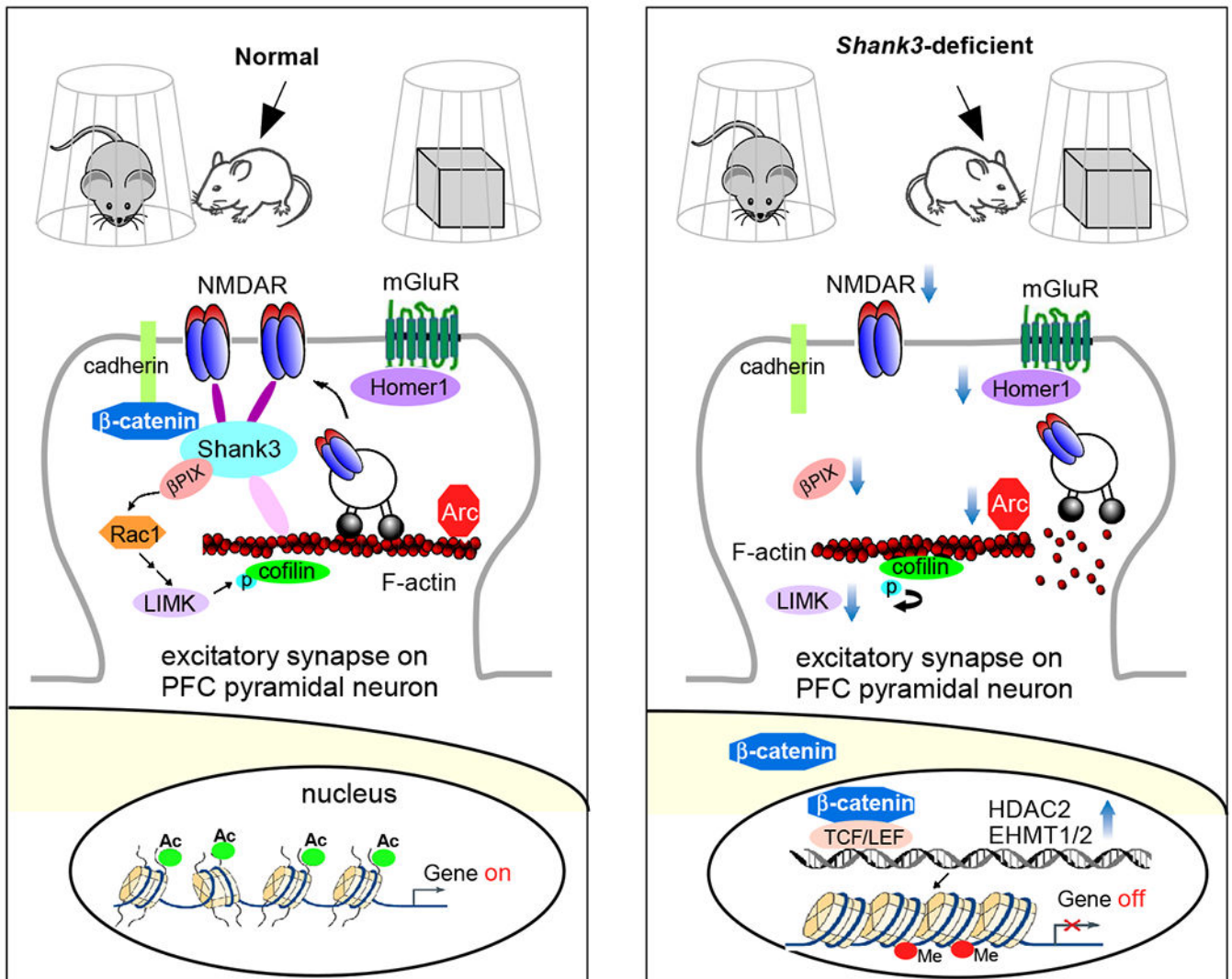


Figure 3. Schematic diagram illustrating a potential mechanism underlying the social deficits in Shank3 autism models. Normally, Shank3 crosslinks NMDARs to actin cytoskeleton, and binds to the adhesive junction-associated protein β -catenin. Loss of Shank3 leads to the translocation of β -catenin from synapses to nucleus, inducing the upregulation of histone modifiers HDAC2 and EHMT1/2. The ensuing transcriptional suppression of actin regulators, such as β PIX (Rac1 activator) and LIMK, and synaptic plasticity genes, such as Arc and Homer1 (mGluR anchor), results in the disruption of actin filaments (via cofilin-mediated depolymerization) and the diminished actin-based synaptic delivery of NMDARs in PFC pyramidal neurons. Consequently, the autism-like social preference deficits are manifested. Treatment with HDAC or EHMT inhibitors restores or elevates many target genes, which collectively leads to the normalization of NMDAR synaptic function in PFC and the rescue of social deficits^{127,145,146}.

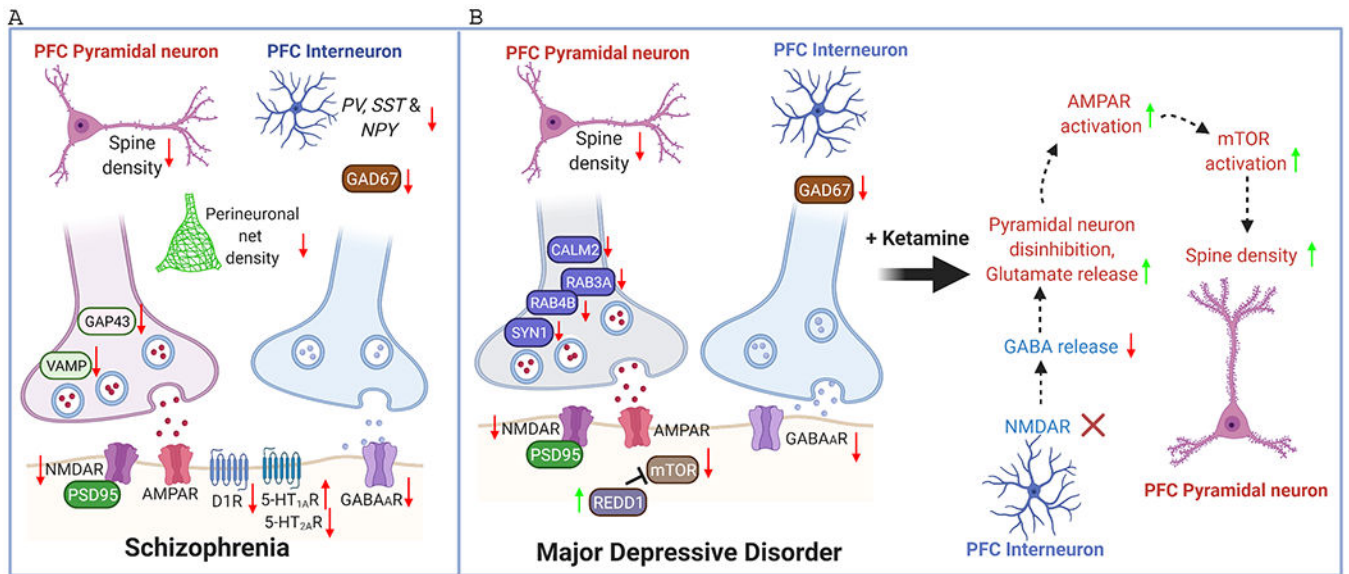


Figure 4.

Schematic diagram illustrating the synaptic changes in PFC of schizophrenia (SZ) and major depressive disorder (MDD). NMDAR hypofunction, GABA deficiency, dopamine hypoactivity, serotonin dysregulation, and dendritic spine loss are major aberrations in SZ PFC. The reduced density of perineuronal nets (PNN) may contribute to the destabilization of synapses. Similar reduction on NMDAR, GABA system and spine density is found in MDD PFC. Some presynaptic molecules involved in transmitter release, including CALM2, SYN1, RAB3A, RAB4B, are also diminished in MDD PFC. In addition, mTOR signaling is decreased in MDD PFC because of the elevated expression of the endogenous inhibitor REDD1. The fast-acting antidepressant ketamine primarily blocks NMDARs on PFC interneurons, leading to the disinhibition of PFC pyramidal neurons and the increase of mTOR signaling, resulting in the restoration of dendritic spines in MDD PFC.

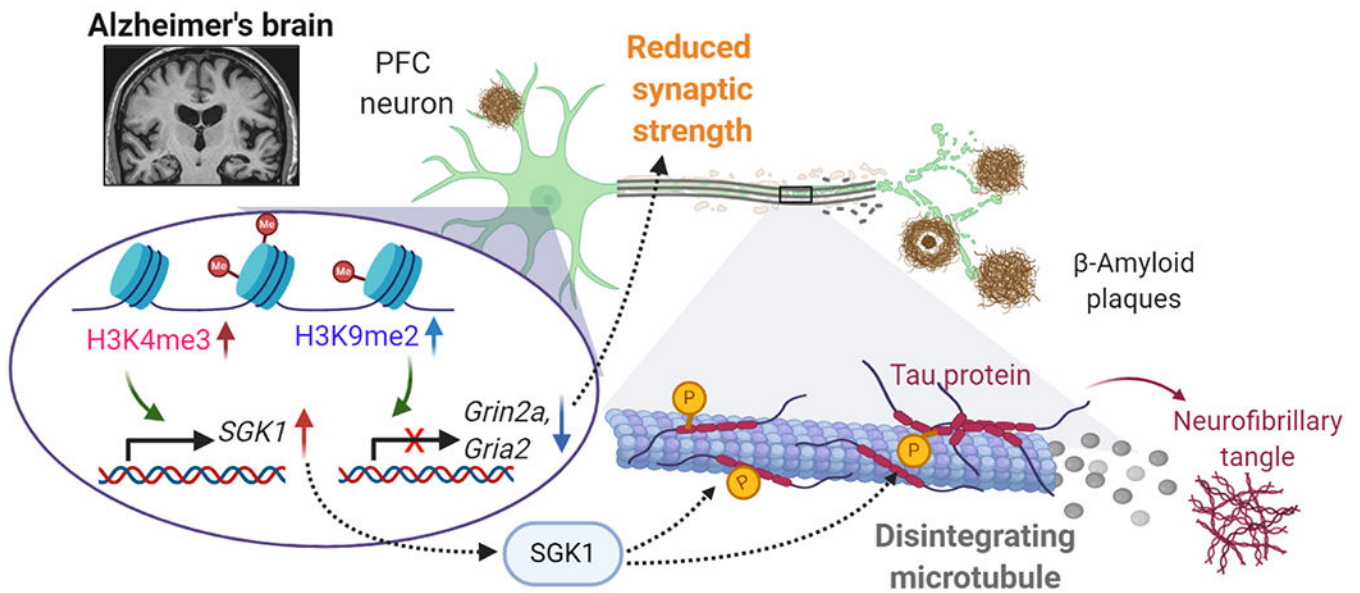


Figure 5.

Schematic diagram illustrating the potential epigenetic mechanisms underlying gene dysregulation and synaptic deficits in PFC of AD. The elevation of repressive histone mark H3K9me2 in AD leads to the downregulation of genes involved in synaptic transmission, such as AMPAR subunit *Gria2* and NMDAR subunit *Grin2a*, resulting in the reduction of synaptic strength²⁵⁶. On the other hand, the elevation of permissive histone mark H3K4me3 in AD leads to the upregulation of genes involved in cell stress, such as serum- and glucocorticoid-inducible kinase 1 (SGK1), resulting in hyperphosphorylation of tau, disintegration of microtubules and disruption of vital protein transport²⁶⁰. Targeting histone methyltransferases to normalize histone modification or key target genes is the potential new therapeutic strategy for treating synaptic and cognitive deficits in AD.