



# Nomogram to Predict Left Atrial Thrombus or Spontaneous Echo Contrast in Patients With Non-valvular Atrial Fibrillation

Zhitong Li<sup>1</sup>, Quanbo Liu<sup>2</sup>, Fei Liu<sup>1</sup>, Tesfaldet H. Hidru<sup>1</sup>, Yuqi Tang<sup>1</sup>, Tao Cong<sup>1</sup>, Lianjun Gao<sup>1</sup>, Xiaolei Yang<sup>1\*</sup> and Yunlong Xia<sup>1\*</sup>

<sup>1</sup> Department of Cardiology, First Affiliated Hospital of Dalian Medical University, Dalian, China, <sup>2</sup> Department of Respiratory Medicine, Shengjing Hospital of China Medical University, Shenyang, China

## OPEN ACCESS

### Edited by:

Roberto Pola,  
Università Cattolica del Sacro  
Cuore, Italy

### Reviewed by:

Senthil Sukumar,  
The Ohio State University,  
United States  
Francesco Poletto,  
University of Padua, Italy

### \*Correspondence:

Xiaolei Yang  
15942456079@yeah.net  
Yunlong Xia  
yunlong\_xia@126.com

### Specialty section:

This article was submitted to  
Thrombosis,  
a section of the journal  
Frontiers in Cardiovascular Medicine

**Received:** 07 July 2021

**Accepted:** 21 September 2021

**Published:** 14 October 2021

### Citation:

Li Z, Liu Q, Liu F, Hidru TH, Tang Y,  
Cong T, Gao L, Yang X and Xia Y  
(2021) Nomogram to Predict Left  
Atrial Thrombus or Spontaneous Echo  
Contrast in Patients With Non-valvular  
Atrial Fibrillation.  
*Front. Cardiovasc. Med.* 8:737551.  
doi: 10.3389/fcvm.2021.737551

**Background:** The predictive power of the CHADS<sub>2</sub> and CHA<sub>2</sub>DS<sub>2</sub>-VASc scores for the presence of Left atrial thrombus (LAT)/ spontaneous echo contrast (SEC) in non-valvular atrial fibrillation (NVAf) is modest. The aim of this analysis is to define clinical and ultrasonic variables associated with LAT/SEC and to propose nomograms for individual risk prediction.

**Methods:** Data on 1,813 consecutive NVAf patients who underwent transesophageal echocardiography (TEE) from January 2016 to January 2021 were collected. The univariate and multivariate logistic regression analyses were used to construct a nomogram. We examined the predictive ability of the risk scores by calculating the area under the curve (AUC). Moreover, the performance of the nomogram was assessed with respect to calibration, discrimination, and clinical usefulness.

**Results:** LAT/SEC was found in 260 (21.0%) and 124 (21.6%) patients in the training and validation cohorts, respectively. On multivariate analysis, independent factors for LAT/SEC were Age, left atrial diameter (LAD), left ventricular ejection fraction (LVEF), hypertension (HTN), previous stroke or transient ischemic attack, Non-paroxysmal AF and a nomogram was built based on these variables. The calibration curve for the probability of LAT/SEC showed good prediction agreement with actual observation. The nomogram achieved good concordance indexes of 0.836 and 0.794 in predicting LAT/SEC in the training and validation cohorts, respectively. Decision curve analysis demonstrated that the nomogram would be clinically useful.

**Conclusions:** In this study, a nomogram was constructed that incorporated six characteristics of NVAf patients. The nomogram may be of great value for the prediction of LAT/SEC in NVAf patients.

**Keywords:** left atrial thrombus, spontaneous echo contrast, atrial fibrillation, nomogram, risk score

## INTRODUCTION

Atrial fibrillation (AF) is the most common cardiac arrhythmia and is associated with a 5-fold risk for stroke (1). Recent evidence stated left atrial thrombus (LAT) and left atrial spontaneous echo contrast (LASEC) as risk factors of cardiogenic embolism in atrial fibrillation patients (2). Although transesophageal echocardiography (TEE) is still considered the gold standard to exclude LA/LAA thrombus, TEE requires special skills for proper performance and interpretation. Additionally, it is a relatively invasive test, usually performed with the patient under conscious sedation. Therefore, a potentially non-invasive and efficacious method allowing identification of LAT/SEC with reliability and accuracy comparable to TEE would be of significant clinical value.

The current guidelines for anticoagulant therapy for stroke prevention in NVAF depend on CHADS<sub>2</sub> and CHA<sub>2</sub>DS<sub>2</sub>-VASc scores (3). However, the predictive power of the CHADS<sub>2</sub> and CHA<sub>2</sub>DS<sub>2</sub>-VASc scores for the presence of LAT in NVAF is not satisfactory (c-statistics 0.55~0.70) (4, 5). Thrombus can be found even in some patients with low CHA<sub>2</sub>DS<sub>2</sub>-VASc scores (6). As such, it is of scientific interest to establish a stronger predictive model that incorporates factors associated with LAT/SEC based on clinical and ultrasonic data.

A powerful model that estimates LAT/SEC presence can assist cardiologists to identify high-risk patients and lead to a rational therapeutic choice. As a result, many efforts on the peri-procedural estimation of LAT/SEC have been made previously (5, 7). However, there is still no accurate model to predict LAT/SEC. Owing to this lack of a specific and practical predictive method, the development of a predictive model that incorporates factors associated with LAT/SEC based on peri-procedural clinicopathologic data becomes desirable.

In this study, we applied nomogram analysis, which can provide individualized, evidence-based, and highly accurate risk estimation. To our knowledge, we have established the first nomogram for peri-procedural LAT/SEC risk estimation in NVAF. The objectives of this study include to (1) investigate the predictive power of the CHADS<sub>2</sub> and CHA<sub>2</sub>DS<sub>2</sub>-VASc scores for the presence of LAT/SEC, (2) identify the clinical predictors of LAT/SEC, and (3) establish nomogram for LAT/SEC risk estimation in NVAF.

## METHODS

### Study Participants

We retrospectively enrolled 1,899 consecutive patients with non-valvular AF who underwent a TEE from January 2016 to January 2021 in the First Affiliated Hospital of Dalian Medical University (FAHDMU). Patients who were referred for catheter ablation or direct current cardioversion underwent transesophageal echocardiography (TEE) were eligible for this study. Patients with organic valvular heart diseases, rheumatic heart disease, prosthetic valve placement, malignant tumor were excluded. Likewise, individuals with missing/incomplete echocardiography or laboratory data were excluded from the analysis. Finally, 1,813 eligible patients were randomly assigned

into the training cohort ( $n = 1,239$ ) and validation cohort ( $n = 574$ ). The study was approved by the first affiliated hospital of the Dalian medical University institutional review board, and the requirement for informed consent was waived. The research was conducted in accordance with the Helsinki declaration guidelines and all procedures listed here were carried out in compliance with the approved guidelines.

### Definition of the Explanatory Variables

Data on demographics, medical history, and laboratory data, and medications were collected from the electronic medical record of FAHDMU. All anticoagulants were administered at least 5–7 days until the TEE day. Diabetes mellitus was defined as a fasting glucose level  $\geq 126$  mg/dL (or non-fasting glucose  $\geq 200$  mg/dL), a physician diagnosis of diabetes, or use of diabetes medications (8). Congestive heart failure was defined as clinical heart failure (stage C or D) according to the ACC/AHA guidelines (9). Prevalent coronary artery disease (CAD) was defined by a history of physician-diagnosed myocardial infarction, coronary artery bypass surgery, or coronary angioplasty. Hypertension (HTN) was defined as systolic blood pressure  $\geq 140$  mmHg or diastolic blood pressure  $\geq 90$  mmHg at two or more visits or a past medical history of hypertension (10). The definition and classification of AF were according to the published guideline (3). Non-paroxysmal AF was composed of persistent, long-standing persistent, and permanent AF.

### Assessment of CHADS<sub>2</sub> and CHA<sub>2</sub>DS<sub>2</sub>-VASc Score and Risk Classification

CHADS<sub>2</sub> score was determined by assigning 1 point each for the presence of congestive heart failure (CHF), hypertension, age  $\geq 75$  years, and diabetes and by assigning 2 points for the previous stroke/transient ischemic attack (TIA). The CHA<sub>2</sub>DS<sub>2</sub>-VASc score was determined by assigning 1 point each for the presence of CHF, hypertension, age 65–74 years, diabetes, and vascular disease (peripheral artery disease or myocardial infarction) and by assigning 2 points each for age  $\geq 75$  years and previous stroke/TIA (11, 12). Current guidelines recommend anticoagulation for all patients with documented atrial fibrillation and a CHA<sub>2</sub>DS<sub>2</sub>-VASc score of 2 or greater in men and 3 or greater in women (3). Therefore, we classified men with a CHA<sub>2</sub>DS<sub>2</sub>-VASc score of 0–1 or women with a CHA<sub>2</sub>DS<sub>2</sub>-VASc score of 0–2 as low risk.

### Ultrasound Evaluation

All patients routinely underwent transthoracic echocardiography and TEE before catheter ablation or direct current cardioversion. Transthoracic echocardiography was performed with a Vivid 7 ultrasound system (GE Healthcare, Waukesha, WI, USA) using Vingmed Ultrasound) and an M3S probe for the subjects in partial left decubitus. TEE was performed with an HP Sonos5500 color Doppler flow imager using a multi-planar transesophageal ultrasound probe frequency of 4–7 MHz and suitable gain adjustment. The probe was advanced to the mid-esophagus, 25–35 cm from the incisor teeth. A multi-axial scan was performed on the horizontal section of the left heart to display the LAA

and then a 0–180° continuous scan was performed at different angles and depths to maximize visualization of the structure of the LAA and its internal echoes. Before the patients underwent the TEE examination, the procedure was explained in detail, and written informed consent was obtained from all patients. Thrombus was defined as a circumscribed, uniformly echo dense mass distinct from the underlying left atrial endocardium and pectinate muscles detected in more than 1 imaging plane. Spontaneous echocardiographic contrast (SEC) was defined as dynamic “smoke-like” echoes with a characteristic swirling motion that could not be eliminated despite optimized gain settings (2). All measurements were performed and interpreted by experienced physicians who were blind to the study.

## Statistical Analysis

Continuous data were expressed as mean (SD) and compared using an unpaired, 2-tailed *t*-test, or Mann–Whitney test. The categorical data were presented as count and percentage and analyzed by  $\chi^2$  test or Fisher exact test. Prior to the data analysis, patients with NVAf were divided into the following two groups

according to their AF status: patients with paroxysmal AF and patients with Non-paroxysmal AF.

The significance of each variable in the training cohort was assessed by univariate logistic regression analysis for investigating the independent risk factors of the presence of LAT/SEC. All variables associated with LAT/SEC at a significant level were candidates for stepwise multivariate analysis. Further, a nomogram was formulated based on the results of multivariate logistic regression analysis using the rms package of R, version 4.0 (<http://www.r-project.org/>). The nomogram is based on proportionally converting each regression coefficient in multivariate logistic regression to a 0–100-point scale. The effect of the variable with the highest  $\beta$  coefficient (absolute value) is assigned to 100 points. The points of the independent variables were added to derive total points, which were converted to predicted probabilities. The predictive performance of the nomogram was evaluated by concordance index (C-index) and calibration with 1,000 bootstrap samples to decrease the overfit bias. Decision curve analysis was conducted using the R library rmda package to determine the clinical usefulness of the nomogram by quantifying the net benefit at different threshold probabilities in the primary dataset.

**TABLE 1** | Baseline characteristics.

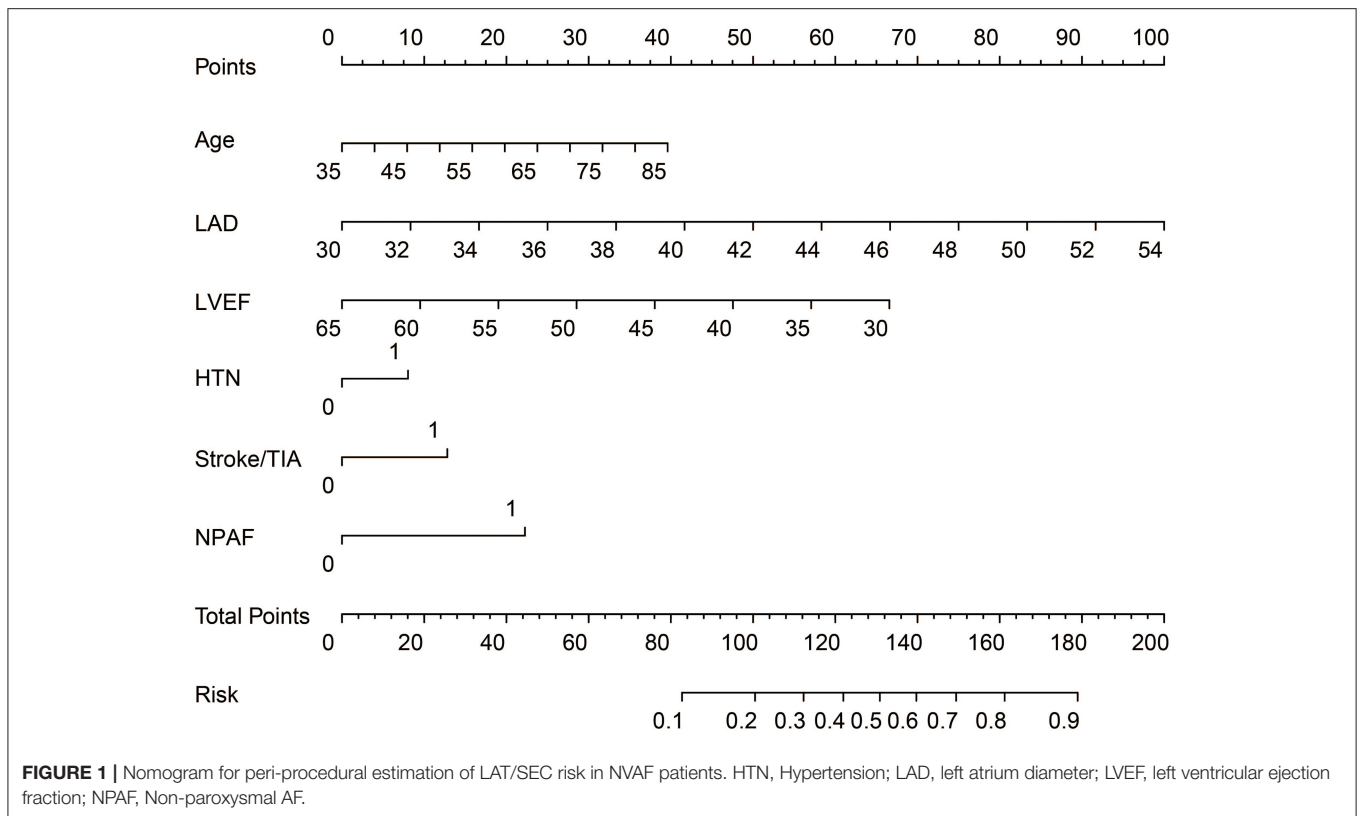
Variable	Cohort		P-value
	Training (n = 1,239)	Validation (n = 574)	
Age, years	62.6 (9.5)	62.6 (9.3)	0.987
Male sex, n (%)	811 (65.5)	356 (62.0)	0.171
<b>Medical history</b>			
HTN, n (%)	767 (61.9)	361 (62.9)	0.725
T2DM, n (%)	297 (24.0)	140 (24.4)	0.893
Previous stroke/TIA, n (%)	248 (20.0)	96 (16.7)	0.11
Vascular disease, n (%)	39 (3.1)	14 (2.4)	0.494
Non-paroxysmal AF, n (%)	445 (35.9)	206 (35.9)	1
CAD, n (%)	402 (32.4)	174 (30.3)	0.394
CHADS <sub>2</sub> Score	1.39 (1.17)	1.34 (1.13)	0.415
CHA <sub>2</sub> DS <sub>2</sub> -VASc score	2.46 (1.45)	2.38 (1.43)	0.25
<b>laboratory data</b>			
eGFR, ml/(min 1.73 m <sup>2</sup> )	90.1 (18.8)	90.7 (19.0)	0.527
Uric acid, $\mu$ mol/L	366.99 (87.77)	368.09 (91.70)	0.807
PT-INR	1.21 (0.50)	1.27 (0.58)	0.019
<b>Echocardiographic parameters</b>			
LAT/SEC, n (%)	260 (21.0)	124 (21.6)	0.812
LAD, mm	39.2 (4.5)	39.1 (4.6)	0.729
LVEDD, mm	47.9 (4.3)	47.9 (4.2)	0.81
LVEF, %	56.5 (4.9)	56.3 (5.2)	0.443
<b>Medication</b>			
Statin, n (%)	752 (60.7)	334 (58.2)	0.336
Amiodarone, n (%)	908 (73.3)	432 (75.3)	0.404
Antiplatelet, n (%)	378 (30.5)	159 (27.7)	0.245

CAD, coronary artery disease; HTN, Hypertension; LAD, left atrium diameter; LAT, left atrial thrombus; LVEDD, left ventricular end diastolic diameter; LVEF, left ventricular ejection fraction; SEC, spontaneous echo contrast; T2DM, Type 2 diabetes mellitus; TIA, transient ischemic attack.

**TABLE 2** | Univariate and multivariate logistic regression analysis of LAT/SEC presence based on peri-procedural data in the training cohort.

Variable	Univariate analysis		Multivariate analysis	
	OR (95%CI)	P-value	OR (95%CI)	P-value
Age, years	1.03 (1.02–1.05)	<0.001	1.04 (1.02–1.06)	0.001
Male sex	0.95 (0.72–1.27)	0.748		
<b>Medical history</b>				
HTN	1.68 (1.25–2.27)	0.001	1.44 (1.02–2.06)	0.041
T2DM	1.13 (0.82–1.54)	0.445		
Previous stroke/TIA	1.94 (1.41–2.65)	<0.001	1.79 (1.23–2.60)	0.002
Vascular disease	1.93 (0.95–3.74)	0.058		
Non-paroxysmal AF	3.58 (2.7–4.77)	<0.001	2.76 (1.99–3.85)	0.001
CAD	1.34 (1.01–1.78)	0.042		
<b>laboratory data</b>				
eGFR, ml/(min 1.73 m <sup>2</sup> )	0.99 (0.98–0.99)	<0.001		
Uric acid, $\mu$ mol/L	1.02 (1.01–1.04)	0.028		
PT-INR	1.5 (1.17–1.91)	0.001		
<b>Echocardiographic parameters</b>				
LAD, mm	1.27 (1.23–1.32)	<0.001	1.21 (1.16–1.26)	0.001
LVEDD, mm	1.09 (1.06–1.13)	<0.001		
LVEF, %	0.89 (0.86–0.91)	<0.001	0.92 (0.89–0.94)	0.001
<b>Medication</b>				
Statin	1.05 (0.79–1.39)	0.754		
Amiodarone	1.21 (0.88–1.67)	0.24		
Antiplatelet	1.02 (0.75–1.36)	0.918		

CAD, coronary artery disease; HTN, Hypertension; LAD, left atrium diameter; LAT, left atrial thrombus; LVEDD, left ventricular end diastolic diameter; LVEF, left ventricular ejection fraction; SEC, spontaneous echo contrast; T2DM, Type 2 diabetes mellitus; TIA, transient ischemic attack.



Receiver operating characteristic curve analysis was used to investigate the optimal cutoff values that were determined by maximizing the Youden index (sensitivity + specificity - 1). The accuracy of the optimal cutoff value was assessed by the sensitivity, specificity, predictive values, and likelihood ratios.  $P < .05$  was considered statistically significant. All analyses were performed using R software, version 4.0.

## RESULTS

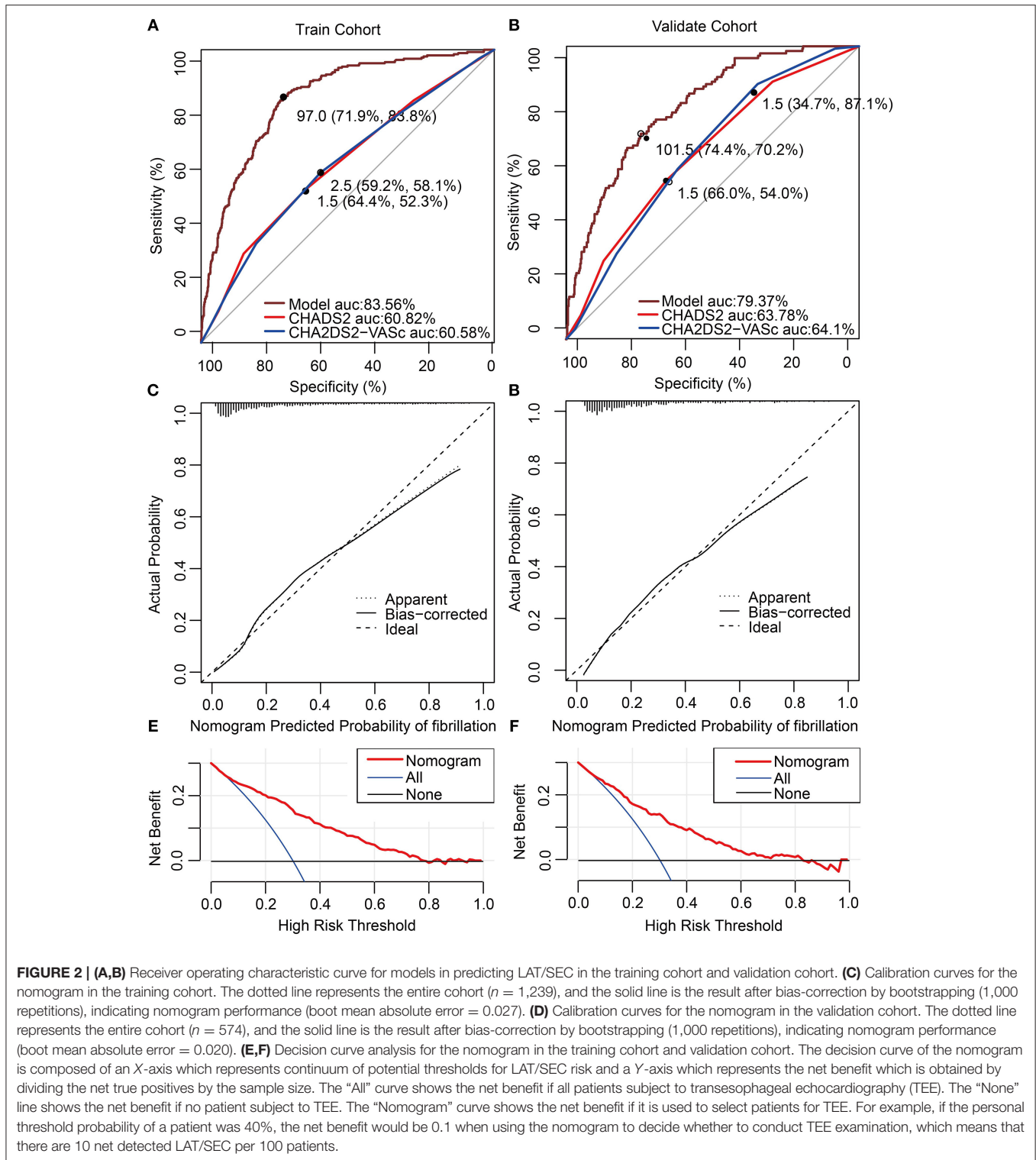
During the study period, 1,813 consecutive NVAF patients were collected. The patients were divided into the training (1,239, 68.3%) and validation cohorts (574, 31.7%). The baseline data were similar between the training and validation cohorts. The mean age of the participants was  $62.6 \pm 9.4$  years. Of the total participants, 64.4% were males. LAT/SEC was found in 260 (21.0%) and 124 (21.6%) patients in the training and validation cohorts, respectively. The clinical and demographic characteristics of the patients are presented in **Table 1**.

The results of the univariate and multivariate logistic analysis are presented in **Table 2**. In the LAT/SEC group, patients had a higher prevalence of hypertension, prior stroke/TIA, non-paroxysmal AF, CAD, and larger left atrial diameter. Likewise, the LAT/SEC group had higher values of CHADS<sub>2</sub> and CHA<sub>2</sub>DS<sub>2</sub>-VASc scores, but lower left ventricular ejection fraction and estimated glomerular filtration rate. However, the prevalence of vascular disease and diabetes mellitus was similar in the two

groups. The multivariate analysis showed that risk factors such as age (OR = 1.04, 95% CI: 1.02–1.06, and  $P = 0.001$ ), LAD (OR = 1.21, 95% CI: 1.16–1.26, and  $P = 0.001$ ), LVEF (OR = 0.92, 95% CI: 0.89–0.94, and  $P = 0.001$ ), previous stroke/transient ischemic attack (OR = 1.79, 95% CI: 1.23–2.60, and  $P = 0.002$ ), hypertension (OR = 1.44, 95% CI: 1.02–2.06, and  $P = 0.041$ ) and non-paroxysmal AF (OR = 2.76, 95% CI: 1.99–3.85, and  $P = 0.001$ ) remained independently associated with LAT/SEC.

ROC curve analysis was used to investigate the predictive power of the CHADS<sub>2</sub> and CHA<sub>2</sub>DS<sub>2</sub>-VASc scores concerning LAT/SEC. The results showed that the c-statistic of the CHADS<sub>2</sub> and CHA<sub>2</sub>DS<sub>2</sub>-VASc scores were 0.608 and 0.606, respectively. Furthermore, we developed a LAT/SEC risk estimation nomogram based on the results of the multivariate logistic analysis (**Figure 1**). The bootstrap validation method was used to internally validate the resulting model.

The nomogram demonstrated a very good predictive power in estimating the risk of LAT/SEC, with an unadjusted C index of 0.836. Besides, calibration plots graphically showed good agreement on the presence of LAT/SEC between the risk estimation by the nomogram and TEE confirmation. In the validation cohort, the nomogram displayed a C index of 0.794 for the estimation of LAT/SEC risk. Also, our result indicates that the observed frequencies and the estimated probability of LAT/SEC presence showed a good calibration curve for the risk estimation (**Figures 2A–D**). The decision curve shows the clinical usefulness of the nomogram (**Figures 2E,F**). In this analysis,



**FIGURE 2 | (A,B)** Receiver operating characteristic curve for models in predicting LAT/SEC in the training cohort and validation cohort. **(C)** Calibration curves for the nomogram in the training cohort. The dotted line represents the entire cohort ( $n = 1,239$ ), and the solid line is the result after bias-correction by bootstrapping (1,000 repetitions), indicating nomogram performance (boot mean absolute error = 0.027). **(D)** Calibration curves for the nomogram in the validation cohort. The dotted line represents the entire cohort ( $n = 574$ ), and the solid line is the result after bias-correction by bootstrapping (1,000 repetitions), indicating nomogram performance (boot mean absolute error = 0.020). **(E,F)** Decision curve analysis for the nomogram in the training cohort and validation cohort. The decision curve of the nomogram is composed of an X-axis which represents continuum of potential thresholds for LAT/SEC risk and a Y-axis which represents the net benefit which is obtained by dividing the net true positives by the sample size. The “All” curve shows the net benefit if all patients subject to transesophageal echocardiography (TEE). The “None” line shows the net benefit if no patient subject to TEE. The “Nomogram” curve shows the net benefit if it is used to select patients for TEE. For example, if the personal threshold probability of a patient was 40%, the net benefit would be 0.1 when using the nomogram to decide whether to conduct TEE examination, which means that there are 10 net detected LAT/SEC per 100 patients.

the final decision curve showed that for a threshold probability between 10 and 80%, the model had positive net benefit.

The optimal cutoff value of the total nomogram scores was determined to be 97.0. The sensitivity, specificity, positive

predictive value, and negative predictive value were 83.8, 71.9, 44.2, and 94.4%, respectively in the training cohort, and 70.2, 74.4, 43.1, and 90.1%, respectively in the validation cohort (Table 3).



**TABLE 3** | Accuracy of the prediction score of the nomogram for estimating the risk of LAT/SEC.

Variable	Nomogram		CHADS <sub>2</sub> score		CHA <sub>2</sub> DS <sub>2</sub> -VASc score	
	Training cohort	Validation cohort	Training cohort	Validation cohort	Training cohort	Validation cohort
AUC	0.84	0.79	0.61	0.64	0.61	0.64
Cutoff score	97.0	101.5	1.5	1.5	2.5	1.5
Specificity, %	71.9	74.4	64.4	66.0	59.2	34.7
Sensitivity, %	83.8	70.2	52.3	54.0	58.1	87.1
NPV, %	94.4	90.1	83.6	83.9	84.2	90.7
PPV, %	44.2	43.1	28.0	30.5	27.5	26.9

AUC, Area under ROC curve; NPV, Negative predictive value; PPV, Positive predictive value; ROC, receiver operating characteristic.

## DISCUSSION

The present study that established the first nomogram for LAT/SEC risk estimation in patients with NVAF found that a new model composed of age, LAD, LVEF, previous stroke or transient ischemic attack, HTN and non-paroxysmal AF had a better performance for the prediction of LAT/SEC compared to CHADS<sub>2</sub> and CHA<sub>2</sub>DS<sub>2</sub>-VASc scores.

The prevalence of LAT/SEC for patients with AF varied in previous studies (2, 4, 13). In our study, the prevalence of LAT/SEC was 21.2% in NVAF population. In the present study, two variables that are not included in the CHA<sub>2</sub>DS<sub>2</sub>-VASc score were found to be the top predictors of LAT/SEC. Two predictors include LAD and non-paroxysmal AF. Therefore, it may be reasonable to consider NVAF patients with the enlarged left atrium and non-paroxysmal AF as candidates for more intensive medical follow-up. The association between these factors and LAT/SEC has also been reported in previous studies (7, 14–16). For instance, left atrial enlargement has been shown to associate with LAT/SEC, which is a surrogate marker of stroke risk (14, 17). Earlier evidence also reported that the possibility of thrombus formation increases with an enlarged LA cavity (14, 18). Although many mechanisms can explain the association between left atrial enlargement and thrombus formation, the mechanism that involves changes in left atrial hemodynamics, such as the existence of turbulences, reduced flow velocity, increased blood stasis and endothelial injury could be speculated as plausible mechanisms (19).

As earlier mentioned, non-paroxysmal AF remained a significant predictor for LAT/SEC in our study. Although the current ESC guidelines do not list AF type or AF burden among factors affecting the probability of LAA thrombus formation, few studies have shown that persistent or permanent AF carries a higher risk of stroke than paroxysmal AF (20). Relative to paroxysmal AF, non-paroxysmal AF shows greater structural remodeling and endocardial fibroelastosis of the atria and appendage, both of which are likely to contribute to thrombus formation (21, 22).

In our study, there were still 103 (14.9%) patients with LAT/SEC among the low-risk group (classified based on CHA<sub>2</sub>DS<sub>2</sub>-VASc score). In addition, the c-statistics of the

CHADS<sub>2</sub> and CHA<sub>2</sub>DS<sub>2</sub>-VASc scores were 0.608 and 0.606, respectively, suggesting CHADS<sub>2</sub> and CHA<sub>2</sub>DS<sub>2</sub>-VASc scores had relatively weaker predictive performance in discriminating LAT/SEC compared to the new model. There could be two reasons that contribute to the observed phenomenon. Firstly, the models share the same risk factor with atherosclerosis. Consequently, CHADS<sub>2</sub> and CHA<sub>2</sub>DS<sub>2</sub>-VASc scores may predict stroke through the mechanism of atherosclerosis but not *via* mechanisms that involve cardiogenic embolism. Secondly, these risk scores do not incorporate other risk factors that are highly linked to thrombo-embolic risks, such as echocardiographic components, biochemical concentrations, and coagulation parameters that are known for predisposing stasis of blood within the left atrium and appendage.

In this study, our multivariate analysis revealed several predictors of LAT/SEC. By combining these predictors of LAT/SEC, we constructed a nomogram model. Interestingly, the newly constructed model demonstrated a strong discriminatory performance to identify patients with increased risk of LAT/SEC. The prognostic relevance of such a model of clinical risk factors has not been prospectively studied in the past. According to our results, the discriminatory performance of the new composition score was even stronger than CHADS<sub>2</sub> and CHA<sub>2</sub>DS<sub>2</sub>-VASc scores. For clinical use of the model, we recommend 97.0 as the cutoff value, and patients with a score of 97.0 or more should be considered as a high-risk group for LAT/SEC. Based on these predictions from the nomogram, the new model might serve as a substitute of TEE for NVAF patients who cannot tolerate TEE and provide references about whether to stop anticoagulants after procedural in the follow-up.

Our study has some limitations. First, this analysis was based on data from a single institution, thus it is necessary to validate the results from other centers. Second, this analysis is a retrospective study, some specific markers which might be associated with LAT/SEC such as left atrial appendage morphology, markers of endothelial dysfunction, and inflammation were not included in the nomogram. Moreover, the current study lacks data on left atrial volume, a more accurate marker to assess left atrial size. Third, the nomogram achieved a good predictive accuracy, with a cutoff point of 97.0, however, it demonstrated a significant proportion of false-positive and

false-negative rates in the training (28.1 and 16.2%, respectively) and validation cohort (25.6 and 29.8%, respectively), which indicates replication of such study is of crucial importance in the future study to confirm the power of the utilized model in clinical decision making. Finally, the present study included only NVAF patients who underwent TEE before ablation or cardioversion intervention, therefore our results may be limited to NVAF patients who are candidates for ablation or cardioversion interventions.

## CONCLUSIONS

Our study showed that Age, LAD, LVEF, HTN, previous stroke or transient ischemic attack, and Non-paroxysmal AF were the risk factors of LAT/SEC from AF patients. By combining these risk factors of LAT/SEC, a nomogram was constructed. The model provides an optimal peri-procedural estimation of LAT/SEC risk in patients with non-valvular atrial fibrillation.

## DATA AVAILABILITY STATEMENT

The raw data supporting the conclusions of this article will be made available by the authors, without undue reservation.

## REFERENCES

- Hart RG, Benavente O, McBride R, Pearce LA. Antithrombotic therapy to prevent stroke in patients with atrial fibrillation: a meta-analysis. *Ann Intern Med.* (1999) 131:492–501. doi: 10.7326/0003-4819-131-7-199910050-00003
- Fatkin D, Kelly RP, Feneley MP. Relations between left atrial appendage blood flow velocity, spontaneous echocardiographic contrast and thromboembolic risk *in vivo*. *J Am Coll Cardiol.* (1994) 23:961–9. doi: 10.1016/0735-1097(94)90644-0
- Hindricks G, Potpara T, Dagres N, Arbelo E, Bax JJ, Blomstrom-Lundqvist C, et al. 2020 ESC Guidelines for the diagnosis and management of atrial fibrillation developed in collaboration with the European Association for Cardio-Thoracic Surgery (EACTS). *Eur Heart J.* (2021) 42:373–498. doi: 10.1093/eurheartj/ehaa612
- Willens HJ, Gomez-Marin O, Nelson K, DeNicco A, Mosucco M. Correlation of CHADS2 and CHA2DS2-VaSc scores with transesophageal echocardiography risk factors for thromboembolism in a multiethnic United States population with nonvalvular atrial fibrillation. *J Am Soc Echocardiogr.* (2013) 26:175–84. doi: 10.1016/j.echo.2012.11.002
- Kim MN, Kim SA, Choi JI, Park SM, Park SW, Kim YH, et al. Improvement of predictive value for thromboembolic risk by incorporating left atrial functional parameters in the CHADS2 and CHA2DS2-VaSc scores. *Int Heart J.* (2015) 56:286–92. doi: 10.1536/ihj.14-380
- Yao Y, Shang MS, Gao LJ, Zhao JH, Yang XH, Liu T, et al. Elevated homocysteine increases the risk of left atrial/left atrial appendage thrombus in non-valvular atrial fibrillation with low CHA2DS2-VaSc score. *Europace.* (2018) 20:1093–8. doi: 10.1093/europace/eux189
- Piccini JP, Stevens SR, Chang Y, Singer DE, Likhnygina Y, Go AS, et al. Renal dysfunction as a predictor of stroke and systemic embolism in patients with nonvalvular atrial fibrillation: validation of the R(2)CHADS(2) index in the ROCKET AF (Rivaroxaban Once-daily, oral, direct factor Xa inhibition Compared with vitamin K antagonism for prevention of stroke and Embolism Trial in Atrial Fibrillation) and ATRIA (AnTicoagulation and Risk factors In Atrial fibrillation) study cohorts. *Circulation.* (2013) 127:224–32. doi: 10.1161/CIRCULATIONAHA.112.107128
- Basevi V, Di Mario S, Morciano C, Nonino F, Magrini N. Comment on: American Diabetes Association. Standards of medical care in diabetes—2011.

## ETHICS STATEMENT

The studies involving human participants were reviewed and approved by the First Affiliated Hospital of the Dalian Medical University Institutional Review Board. Written informed consent for participation was not required for this study in accordance with the national legislation and the institutional requirements.

## AUTHOR CONTRIBUTIONS

XY and YX designed this study. ZL, QL, and YT were in charge of data analysis and data collection. ZL drafted the article. FL and TH did the critical revision of article. TC and LG conducted the data collection. All authors have read and approved the final manuscript.

## ACKNOWLEDGMENTS

We would like to acknowledge Yidu cloud (Beijing) Technology Ltd. for their worthy cooperation in data searching, extraction, and processing.

- Diabetes Care 2011; 34(Suppl. 1):S11–S61. *Diabetes Care.* (2011) 34:e53; author reply e4. doi: 10.2337/dc11-0174
- Yancy CW, Jessup M, Bozkurt B, Butler J, Casey DE Jr, Colvin MM, et al. 2017 ACC/AHA/HFSA Focused Update of the 2013 ACCF/AHA guideline for the management of heart failure: a report of the American College of Cardiology/American Heart Association Task Force on Clinical Practice Guidelines and the Heart Failure Society of America. *J Card Fail.* (2017) 23:628–51. doi: 10.1016/j.cardfail.2017.04.014
- Whelton PK, Carey RM, Aronow WS, Casey DE Jr, Collins KJ, Dennison Himmelfarb C, et al. 2017 ACC/AHA/AAPA/ABC/ACPM/AGS/APhA/ASH/ASPC/NMA/PCNA guideline for the prevention, detection, evaluation, and management of high blood pressure in adults: a report of the American College of Cardiology/American Heart Association Task Force on Clinical Practice Guidelines. *J Am Coll Cardiol.* (2018) 71:e127–e248. doi: 10.1161/HYP.0000000000000075
- Gage BF, Waterman AD, Shannon W, Boehler M, Rich MW, Radford MJ. Validation of clinical classification schemes for predicting stroke: results from the National Registry of Atrial Fibrillation. *JAMA.* (2001) 285:2864–70. doi: 10.1001/jama.285.22.2864
- Lip GY, Nieuwlaat R, Pisters R, Lane DA, Crijns HJ. Refining clinical risk stratification for predicting stroke and thromboembolism in atrial fibrillation using a novel risk factor-based approach: the euro heart survey on atrial fibrillation. *Chest.* (2010) 137:263–72. doi: 10.1378/chest.09-1584
- Yarmohammadi H, Varr BC, Puwanan S, Lieber E, Williams SJ, Klostermann T, et al. Role of CHADS2 score in evaluation of thromboembolic risk and mortality in patients with atrial fibrillation undergoing direct current cardioversion (from the ACUTE Trial Substudy). *Am J Cardiol.* (2012) 110:222–6. doi: 10.1016/j.amjcard.2012.03.017
- Yaghi S, Moon YP, Mora-McLaughlin C, Willey JZ, Cheung K, Di Tullio MR, et al. Left atrial enlargement and stroke recurrence: the Northern Manhattan Stroke Study. *Stroke.* (2015) 46:1488–93. doi: 10.1161/STROKEAHA.115.008711
- Ganesan AN, Chew DP, Hartshorne T, Selvanayagam JB, Aylward PE, Sanders P, et al. The impact of atrial fibrillation type on the risk of thromboembolism, mortality, and bleeding: a systematic review and meta-analysis. *Eur Heart J.* (2016) 37:1591–602. doi: 10.1093/eurheartj/ehw007

16. Vanassche T, Lauw MN, Eikelboom JW, Healey JS, Hart RG, Alings M, et al. Risk of ischaemic stroke according to pattern of atrial fibrillation: analysis of 6563 aspirin-treated patients in ACTIVE-A and AVERROES. *Eur Heart J.* (2015) 36:281–7a. doi: 10.1093/eurheartj/ehu307
17. Ayirala S, Kumar S, O'Sullivan DM, Silverman DI. Echocardiographic predictors of left atrial appendage thrombus formation. *J Am Soc Echocardiogr.* (2011) 24:499–505. doi: 10.1016/j.echo.2011.02.010
18. Benjamin EJ, D'Agostino RB, Belanger AJ, Wolf PA, Levy D. Left atrial size and the risk of stroke and death. The Framingham Heart Study. *Circulation.* (1995) 92:835–41. doi: 10.1161/01.CIR.92.4.835
19. Cha MJ, Cho Y, Oh IY, Choi EK, Oh S. Validation of conventional thromboembolic risk factors in a Korean atrial fibrillation population—suggestion for a novel scoring system, CHA2DS2-VAK. *Circ J.* (2018) 82:2970–5. doi: 10.1253/circj.CJ-18-0218
20. Steinberg BA, Hellkamp AS, Lokhnygina Y, Patel MR, Breithardt G, Hankey GJ, et al. Higher risk of death and stroke in patients with persistent vs. paroxysmal atrial fibrillation: results from the ROCKET-AF Trial. *Eur Heart J.* (2015) 36:288–96. doi: 10.1093/eurheartj/ehu359
21. Goette A, Kalman JM, Aguinaga L, Akar J, Cabrera JA, Chen SA, et al. EHRA/HRS/APHRS/SOLAECE expert consensus on atrial cardiomyopathies: definition, characterization, and clinical implication. *Europace.* (2016) 18:1455–90. doi: 10.1093/europace/euw161
22. Shirani J, Alaeddini J. Structural remodeling of the left atrial appendage in patients with chronic non-valvular atrial fibrillation: Implications for thrombus formation, systemic embolism, and assessment by transesophageal echocardiography. *Cardiovasc Pathol.* (2000) 9:95–101. doi: 10.1016/S1054-8807(00)00030-2

**Conflict of Interest:** The authors declare that the research was conducted in the absence of any commercial or financial relationships that could be construed as a potential conflict of interest.

**Publisher's Note:** All claims expressed in this article are solely those of the authors and do not necessarily represent those of their affiliated organizations, or those of the publisher, the editors and the reviewers. Any product that may be evaluated in this article, or claim that may be made by its manufacturer, is not guaranteed or endorsed by the publisher.

Copyright © 2021 Li, Liu, Liu, Hidru, Tang, Cong, Gao, Yang and Xia. This is an open-access article distributed under the terms of the Creative Commons Attribution License (CC BY). The use, distribution or reproduction in other forums is permitted, provided the original author(s) and the copyright owner(s) are credited and that the original publication in this journal is cited, in accordance with accepted academic practice. No use, distribution or reproduction is permitted which does not comply with these terms.