



E3 Ubiquitin Ligases in Breast Cancer Metastasis: A Systematic Review of Pathogenic Functions and Clinical Implications

Yingshuang Wang^{1,2}, Jiawen Dai^{1,2}, Youqin Zeng^{1,2}, Jinlin Guo^{1,2*} and Jie Lan^{3*}

¹ Key Laboratory of Systematic Research of Distinctive Chinese Medicine Resources in Southwest China, Chengdu University of Traditional Chinese Medicine, Chengdu, China, ² Chongqing Key Laboratory of Sichuan-Chongqing Co-construction for Diagnosis and Treatment of Infectious Diseases Integrated Traditional Chinese and Western Medicine, Chengdu University of Traditional Chinese Medicine, Chengdu, China, ³ Department of Thoracic Oncology, Department of Radiation Oncology, Cancer Center and State Key Laboratory of Biotherapy, West China Hospital, Sichuan University, Chengdu, China

OPEN ACCESS

Edited by:

Harikumar KB,
Rajiv Gandhi Centre for Biotechnology,
India

Reviewed by:

Masashi Maekawa,
Keio University, Japan
Arun Upadhyay,
Northwestern University,
United States
Pradeep Reddy Cingaram,
University of Miami, United States

*Correspondence:

Jinlin Guo
guo596@cducm.edu.cn
Jie Lan
lanjielanjie@foxmail.com

Specialty section:

This article was submitted to
Cancer Molecular Targets
and Therapeutics,
a section of the journal
Frontiers in Oncology

Received: 03 August 2021

Accepted: 04 October 2021

Published: 22 October 2021

Citation:

Wang Y, Dai J, Zeng Y, Guo J and
Lan J (2021) E3 Ubiquitin Ligases in
Breast Cancer Metastasis: A
Systematic Review of Pathogenic
Functions and Clinical Implications.
Front. Oncol. 11:752604.
doi: 10.3389/fonc.2021.752604

Female breast cancer has become the most commonly occurring cancer worldwide. Although it has a good prognosis under early diagnosis and appropriate treatment, breast cancer metastasis drastically causes mortality. The process of metastasis, which includes cell epithelial–mesenchymal transition, invasion, migration, and colonization, is a multistep cascade of molecular events directed by gene mutations and altered protein expressions. Ubiquitin modification of proteins plays a common role in most of the biological processes. E3 ubiquitin ligase, the key regulator of protein ubiquitination, determines the fate of ubiquitinated proteins. E3 ubiquitin ligases target a broad spectrum of substrates. The aberrant functions of many E3 ubiquitin ligases can affect the biological behavior of cancer cells, including breast cancer metastasis. In this review, we provide an overview of these ligases, summarize the metastatic processes in which E3s are involved, and comprehensively describe the roles of E3 ubiquitin ligases. Furthermore, we classified E3 ubiquitin ligases based on their structure and analyzed them with the survival of breast cancer patients. Finally, we consider how our knowledge can be used for E3s' potency in the therapeutic intervention or prognostic assessment of metastatic breast cancer.

Keywords: ubiquitination, E3 ligase, breast cancer, metastasis, systematic review

1 INTRODUCTION

According to the latest global cancer statistics by the International Agency for Research on Cancer, female breast cancer has overtaken lung cancer and has become the most commonly occurring cancer worldwide, which accounts for about 11.7% of all new cancer cases (1). Breast cancers are highly heterogeneous, and they are classified into subtypes as Luminal A, Luminal B, HER2 (human epithelial growth factor receptor 2) positive, and basal-like (triple negative breast cancer, TNBC), with respect to the presence or absence of hormone receptors such as estrogen receptor (ER) and progesterone receptor (PR), and one oncogenic biomarker, HER2. These molecular subtypes help determine which patients are likely to respond to targeted therapies (2). Despite having good

prognosis with early diagnosis and appropriate treatment, breast cancer is still the leading cause of mortality among women (3). Breast cancer–leading deaths are mostly attributed to metastasis. As mammary epithelial cells which acquire deregulated proliferation, if these malignant cells remain contained within the ducts or lobules of breast, the patients' survival has been reported to be nearly ~98% within 5 years. In contrast, the patients' 5-year survival rate with distant metastases at the time of diagnosis decreased to only 23% (2). Furthermore, approximately one-third of female breast cancer patients with no lymph node involvement at the time of diagnosis will develop distal metastasis (4).

1.1 The Multistep Cascade of Breast Cancer Cell Alterations in Metastasis

Some breast cancer cells acquire metastatic potential in a very early stage, which gains the capability to spread from the breast tissue, enter the blood or lymphatic vessels, and disseminate to distal organs, preferentially to the lung, liver, brain, and bone. Metastasis represents the multistep cascade of cancer cell alterations accompanied by structural and functional changes. It is well recognized that distant metastasis colonization consists of sequential steps (**Figure 1**) (2, 5), including cell detachment from the primary tumor site involving epithelial–mesenchymal transition (EMT) (6); migration and invasion into surrounding tissue; penetration of the basal membrane (trans-endothelial intravasation) into the vasculature of blood and/or lymphatic vessels to be circulating tumor cells (CTCs); extravasation of CTCs to secondary sites as disseminated tumor cells (DTCs) (7); dissemination to distant organs; and formation of a micro-metastatic niche and construction of macrometastases. In addition, to survive and initiate the secondary cancer foci, cells need the capability of evading immune defenses, delivering to distant sites, adapting to supportive niches such as angiogenesis (8), and inducing retro-differentiation to gain stemness (9).

1.2 The E3 Ubiquitin Ligases

Ubiquitination is a post-translational modification of proteins, which is essential for nearly all biological processes, including cell growth, autophagy, apoptosis, and differentiation. It is a three-step enzymatic cascade: i) A ubiquitin-activating enzyme (E1) mediates the activation of the carboxyl-terminal glycine residue of ubiquitin in an ATP-dependent manner. ii) The activated ubiquitin is then transferred to E1 followed by the transfer of ubiquitin to a thioester of a ubiquitin-conjugating enzyme (E2) to format the thioester linkage. iii) A ubiquitin protein ligase (E3) confers substrate specificity by recognizing the target proteins and mediating the conjugation of ubiquitin molecules to a lysine residue on the targeted protein *via* an isopeptide bond (10). E3's ability to specifically recognize and target substrates makes it a key regulator in the ubiquitin process.

The fate of ubiquitinated proteins is dependent on the different types of ubiquitin linkage. It has been characterized as mono-ubiquitination or poly-ubiquitinated chains. Mono-ubiquitination involves the transfer of a single ubiquitin to a substrate. E3 ligases can also connect several ubiquitin molecules together using the C-terminus of one subunit and one of the seven lysine (K) residues (K6, K11, K27, K29, K33, K48, K63) or the N-terminal methionine (M1) on the other, to form a homotypic or branched ubiquitin chain (11). The recruitment of polyubiquitinated proteins to the proteasome is a classic protein turnover pathway (**Figure 2A**). Ubiquitin-dependent proteasomal degradation involves the polyubiquitination of substrate catalyzed by E1, E2, and especially E3 (12, 13). Subsequently, polymers linked through K11 or K48 (14, 15) trigger substrate protein degradation by the ATP-dependent 26S proteasome (16).

Besides, different ubiquitin topologies adopt distinct structural conformations. Signals can be transduced by different types of ubiquitin modification, including mono-ubiquitination, multi-monoubiquitination, homotypic ubiquitin

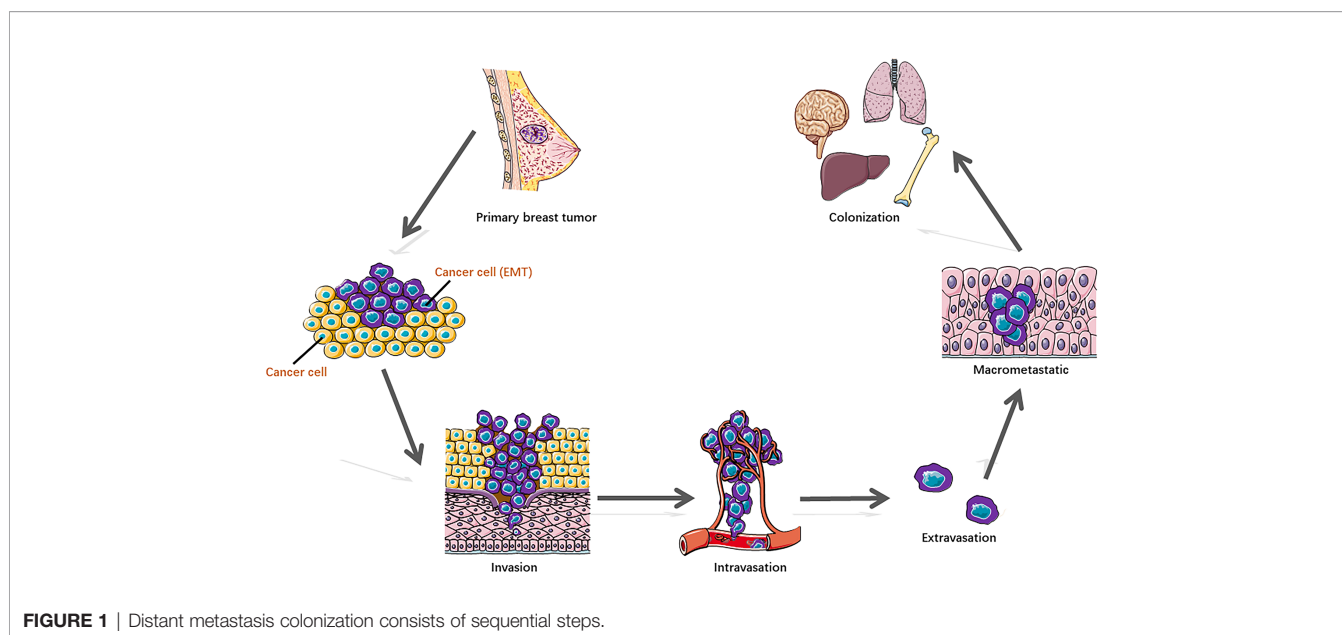


FIGURE 1 | Distant metastasis colonization consists of sequential steps.

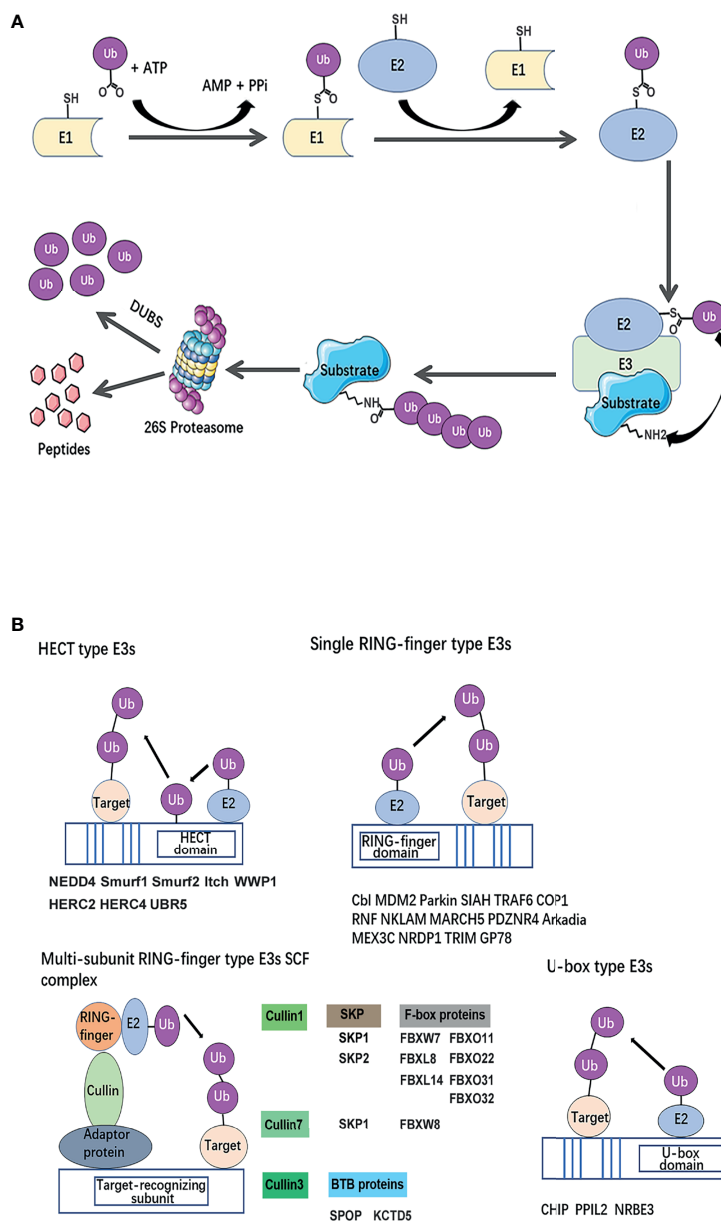


FIGURE 2 | Classical mechanism and structural basis of E3 ubiquitin ligases. **(A)** The ubiquitin-proteasome system. A ubiquitin-activating enzyme (E1) mediates the activation of the carboxyl-terminal glycine residue of ubiquitin in an ATP-dependent manner. To format the thioester linkage, the activated ubiquitin is then transferred to E1 followed by the transfer of ubiquitin to a thioester of a ubiquitin-conjugating enzyme (E2). Ubiquitin protein ligase (E3) confers substrate specificity by recognizing the target proteins and mediating the conjugation of ubiquitin molecules to a lysine residue on the targeted protein *via* an iso-peptide bond. Polyubiquitinated substrate recognized by 26S proteasome for degradation. **(B)** Classification of breast cancer metastasis-related ubiquitin E3 ubiquitin ligases based on a structural basis. The canonical E3s are classified into two canonical types: HECT and RING. HECT E3s contains HECT domains which consist of a E2-interacting N-lobe and a catalytic Cys residue containing C-lobe involved in ubiquitin transfer. RING-type E3s mediate the direct transfer of ubiquitin from E2 to substrate, including single RING-finger-type E3s, RING-like (Ubox)-type E3s, and multi-subunit RING-finger-type E3s SCF complex. The Cullin-RING ubiquitin ligase (CRL) family is composed of a multi-unit. Each type of E3s or members of E3 complexes has been summarized and listed below the schematic diagram of the relevant category.

chains, and heterotypic ubiquitin chains, which send various ‘codes’ to precisely exert degradative and non-degradative functions including modification of protein trafficking, interaction, and signal transduction (17, 18). For example, linkages of homotypic K11 and K48 can drive proteasomal degradation; K27 linkages have been implicated in regulating

DNA repair (19) and autoimmunity (20); K33 linkages were proposed to regulate trafficking; and mono-ubiquitination can prevent protein interactions (21). SMAD4 (SMAD family member 4) engages its signal partner SMAD2 (SMAD family member 2) after removing its own mono-ubiquitination (18). In addition, the mono-ubiquitination of histone H2A promotes

transcriptional silencing (22), while the mono-ubiquitination of histone H2B mediates transcriptional elongation (23).

The canonical E3s are classified into two types: Homologous to the E6AP Carboxyl Terminus (HECT) family (24) and Really Interesting New Gene (RING) finger family (25). HECT E3 ligases were named accordingly to identify protein E6AP (E6-associated protein), and they are characterized by a conserved C-terminal ~350 aa HECT domain and various N-terminal substrate-binding domains (26). HECT E3 ligases mediate a two-step ubiquitin transfer process, in which ubiquitin is firstly transferred from the E2-Ub intermediate to the E3 active cysteine residue before transferring to the substrate lysine residue (**Figure 2B**) (27). In contrast, The RING core is a small domain of 40–70 residues. A cross-braced pattern of conserved cysteine and histidine residues coordinating two zinc ions maintains the native fold. The RING domain brings the E2~Ub conjugate into the proximity of the substrate bound *via* substrate-recognition domains (**Figure 2B**). RING E3s are further divided into two subtypes: single RING and multi-unit RING family. The Cullin-RING ubiquitin ligase (CRL) family is composed of a multi-unit. CRLs utilize Cullin proteins as a central scaffold which binds to a RING-box protein (Rbx) and an adaptor protein–substrate receptor complex through its C- and N-termini. Most recognized CRLs are known as the SCF (Skp-Cullin-F-box) complex, in which Cullin interacts with Skp (S-phase kinase associated protein) proteins and utilizes various F-box proteins, to recruit substrates and initiate ubiquitin ligation (28). Besides, U-box E3s are also categorized as RING-type E3s, but their molecular structure subtly differs in that zinc-bound sites are replaced by a hydrophobic core (29) (**Figure 2B**).

E3s target a broad spectrum of substrates. In cancer, the aberrant functions of E3s are linked to deregulated oncoproteins or tumor suppressors and affect the biological behavior of cells. Many E3s have been reported to be associated with breast cancer metastasis over the past few decades. In this review, we provided an overview of E3 ubiquitin ligases that have been found to be deregulated in breast cancer metastasis and summarized the multistep cascade of breast cancer cell alterations in metastasis, in which these E3 ubiquitin ligases are involved. Furthermore, we classified E3s based on their structures and analyzed the correlation of E3s with the survival of breast cancer patients. Finally, we considered their potency to the therapeutic intervention or prognostic assessment of metastatic breast cancer.

2 METHODS

2.1 Search Strategy and Selection Criteria

The literatures involved in this study were searched from the databases PubMed and Medline (last search updated on January 1st, 2021). The key words used in the searching were “E3 ubiquitin”, “breast cancer” and “Metastasis” or “dissemination”/“EMT”/“invasion”/“migration”/“intravasation”/“CTC”. All the searching results were imported in the Endnote software to eliminate duplicates.

By scanning the titles and abstracts and further reading the full text, the irrelevant and retracted papers were excluded. The reference list of all selected articles was scanned to identify potentially relevant reports. The search results followed these including and excluding criteria:

Including criteria: 1) research limits to the E3 ubiquitin ligases; 2) research related to human breast cancer; 3) research focused on metastasis or steps in the metastasis mechanisms of breast cancer; 4) studies provided sufficient experimental evidence or clinical data to support thesis; 5) peer-reviewed and formally published original literatures

Excluding criteria: 1) research of the regulation of E3 ubiquitin ligases; 2) research of ubiquitin-like modifiers including SUMOylation; 3) retracted articles; 4) reviews or letter to editors.

2.2 Data Extraction

The above searches were performed and reviewed by two authors independently. The following items were recorded from each study: E3 name, gene ID, substrate, role in breast cancer metastasis, cellular function, signal pathway, verification by cell biological experiments, breast cancer cell lines, and clinical significance (expression difference and survival analysis). These records were cross-checked and double-checked by another author.

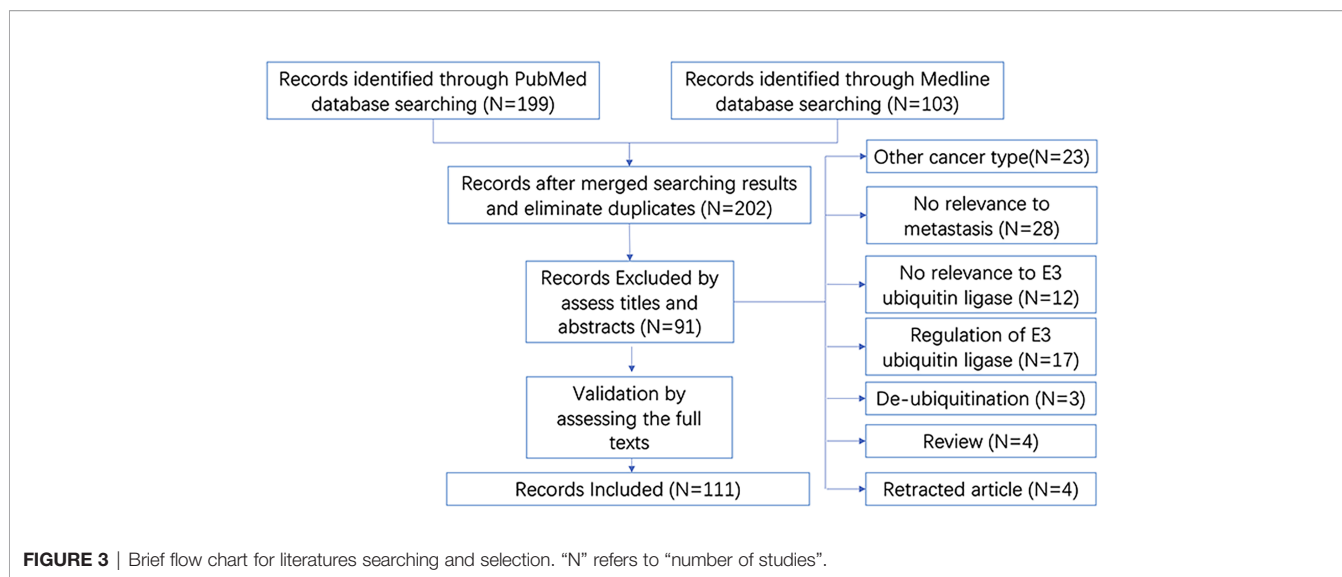
2.3 Survival Analysis

The association between the specific E3s' ubiquitin ligase expression and survival in breast cancer was first analyzed using the PrognScan database (30) as in previously mentioned methods (31). Then, we used a Kaplan–Meier plotter (32) to validate and illustrate as a Kaplan–Meier plot, in which the distant metastasis-free survival (DMFS) curves for high (red) and low (black) expression groups dichotomized at the optimal cut-point were plotted. The logrank P-value and the hazard ratio with 95% confidence intervals were calculated. The threshold was adjusted to logrank P-values at <0.05.

3 RESULTS

3.1 Description of Collected Studies

As shown in the brief flow chart (**Figure 3**), the records on E3 ubiquitin ligases involved in breast cancer metastasis were screened from both the PubMed (N = 199) and Medline (N = 103) databases. After duplicate elimination, 202 records remained. By reading the titles and abstracts of these records, we excluded 91 literatures for the following reasons: studies in other cancer types (N = 23); irrelevant to metastasis (N = 28) or irrelevant to E3 ubiquitin ligase (N = 12); focused on the regulation of E3 ubiquitin ligase (N = 17) or de-ubiquitination (N = 3); and reviews (N = 4) and retracted articles (N = 4). Other studies had been validated by reading the full texts. Finally, a total of 111 literatures were included in our analysis.



3.2 Roles of E3 Ubiquitin Ligases Played in the Multiple Steps of Breast Cancer Metastasis

We further extracted key information from these literatures, including E3 name, gene ID, substrate, roles in breast cancer metastasis, cellular function (experimentally verified), signal pathway, breast cancer cell lines, and clinical significance. This detailed information of 54 E3 ubiquitin ligases/ligase complexes in total have been summarized in **Table 1**. By their molecular roles’ participation in the multiple steps of breast cancer metastasis, we briefly presented them as follows.

3.2.1 Breast Cancer Cell Epithelial–Mesenchymal Transition

EMT is thought to be a hallmark in tumor metastasis (117, 118). By the loss of cell–cell conjunction, the epithelial cells acquire migratory, invasive properties and trans-differentiate to mesenchymal phenotypic cells (9). Carcinoma cells undergoing EMT can escape from primary tumor sites, enter the circulation, and then move out to invade distant sites where secondary tumors or metastases begin to form (117, 119).

Not all breast cancer cells are typical EMT cells. In a study of breast cancer aggressiveness, by profiling EMT-like subclones from MCF-7 breast cancer cells based on EMT properties, comparing their gene-expressing differences with other non-EMT-like subclones, FBXO11 (F-box protein 11, a member of the E3 ubiquitin ligase complex) was screened out. It is concluded that FBXO11 is a candidate molecular alternative to the canonical EMT-dependent aggressiveness in highly differentiated luminal tumors (54). The specific roles suggest that E3 ligase FBXO11 targets transcription factor SNAI1 (snail family transcriptional repressor 1) protein which induces EMT, for ubiquitination-dependent degradation (55), and regulates the p53/p21/BCL2 pathway (54).

In cancer cells, the loss of E-cadherin results in EMT and contributes to increased metastasis and chemoresistance

(120, 121). The absence of the ubiquitin protein ligase E3 component n-recognin 5 (UBR5) has been characterized to trigger aberrant EMT in TNBC, principally *via* an abrogated expression of E-cadherin, which resulted in severe lung metastasis in UBR5 knockout mice. The E-cadherin transcription repressors slug, twist, and zinc finger E-box-binding homeobox 1/2 (ZEB1/2) are overexpressed in multiple drug-resistant (MDR) breast cancer cells, making them more metastatic (122). The E3 ubiquitin ligase Casitas B lymphoma-b (Cbl-b) was reported to prevent tumor metastasis by maintaining the epithelial phenotype in MDR breast cancer cells. Cbl-b inhibits MDR breast cancer cell migration by specifically targeting epidermal growth factor receptor (EGFR) ubiquitination-dependent degradation, which prevents metastatic breast cancer cell EMT by inhibition of the EGFR-ERK/Akt-miR-200c-ZEB1 axis (37).

Not only restricted in the degradation of substrates, an RNA-binding E3 ligase, mex-3 RNA binding family member C (MEX3C), catalyzed protein PTEN (phosphatase and tensin homolog) K27-linked polyubiquitination, leading to its enzymatic functions’ switch to serine/threonine phosphatase activity (74). Consequently, switched PTEN promotes EMT.

The roles of E3 ubiquitin ligases played in breast cancer cell EMT include regulating transcription factors in EMT-inducing gene expression, abrogated expressing of key proteins, and affecting the activities of substrate proteins. The specific modification is not only as an E3 ubiquitin ligase to influence protein stability but also to induce the change of protein catalytic activities.

3.2.2 Breast Cancer Cell Invasion and Migration

Escaping from the surrounding tissues of the primary tumor, invading the blood or lymphatic vessels (intravasation), and migrating are essential steps in breast cancer metastasis. In this analysis, most of the E3 ubiquitin ligases (50 out of 54) have been detected to promote or inhibit the invasion and migration of breast cancer cells. Ubiquitin E3 ligases for tumor suppressors

TABLE 1 | E3 ubiquitin ligases that played important roles in the multiple steps of breast cancer metastasis .

E3	Substrate	Inhibit/Promote Metastasis	Cellular Function	Molecular Pathway	References
Arkadia	Ski	Inhibit	EMT	TGF-beta	(33)
ASB13	SNAI2	Inhibit	Migration	Hippo-YAP	(34)
BCA2	Autoubiquitination	Promote	Migration and invasion	EGFR	(35, 36)
Cbl	FAK and EGFR	Promote/inhibit	Cell detachment/EMT and migration	FAK, RANKL/RANK EGFR-ERK/Akt	(37-40)
CHIP	Pfn1	Promote	Migration	ROCK1/Pfn1	(41, 42)
COP1	c-Jun	Inhibit	Migration	ETV1, GSK3β/c-Jun	(43, 44)
Cullin1	N/A	Promote	EMT, migration, invasion, and tube formation	PI3K/AKT, NF-κB	(45)
Cullin3/SPOP	PR, E α	Inhibit	Migration	PR, E α	(46, 47)
Cullin3/KCTD5	N/A	Promote	Migration and invasion	TRPM4	(48)
Cullin7	N/A	Promote	Invasion	N/A	(49)
FBXW7	NICD1/Notch1	Promote/inhibit (indirect evidence)	Migration and invasion	NOTCH/p62	(50, 51)
FBXL8	N/A	Promote	Migration and invasion	CCND2/IRF5	(52)
FBXL14	CDCP1	Inhibit	EMT, migration, and invasion	PI3K/AKT	(53)
FBXO11	SNAI1	Inhibit	Emt	SNAI1 and p53/p21/BCL2	(54, 55)
FBXO22	HDM2	Inhibit	Migration and invasion	p53/p21, SNAI1	(56)
FBXO31	Slug	Inhibit	Invasion	N/A	(57)
FBXO32	KLF4	Promote	EMT, migration, and invasion	N/A	(58)
GP78	HSPA5	Inhibit	Migration and invasion	N/A	(59, 60)
HACE1	Rac1	Inhibit	Migration and invasion	N/A	(61)
HectD1	ACF7	Inhibit	EMT, migration, and invasion	N/A	(62)
HERC2	BRCA1	Promote (indirect evidence)	Invasion (indirect evidence)	BRCA1	(63)
HERC4	LATS1	Promote	Migration and invasion	LATS1	(64)
HRD1	IGF-1R	Inhibit	EMT, migration, and invasion	IL6/NF-κB	(65)
ITCH	c-Jun, p73, p63, and ErbB4; RASSF1A; histone H1.2	Promote	EMT and invasion	Hippo	(66-68)
MARCH5	N/A	Promote	Migration and invasion	Mitochondrial	(69)
MDM2	P53; RB; Foxo3a	Promote	EMT, migration, and invasion	p53/p21	(70-73)
MEX3C	PTEN	Promote	EMT	TWIST1, SNAI1, and YAP1	(74)
NEDD4	Robo1	Promote	Migration and invasion (indirect evidence)	FAK and Src	(75-77)
NKLAM	N/A	Inhibit	Tumor immunity	NK killing activity	(78)
NRBE3	RB	Promote	Migration and invasion	E-cadherin	(79)
NRDP1	ErbB3 and ErbB4	Inhibit (indirect evidence)	Migration and invasion (indirect evidence)	ER	(80)
Parkin	HIF-1 α	Inhibit	Migration and invasion	HRE/VHL	(81)
PDZRN4	Kidins220 (predict)	Inhibit	Migration and invasion	N/A	(82)
PPIL2	SNAI1	Inhibit	EMT, migration, and invasion	SNAI1	(83)
RNF8	TWIST	Promote	EMT, migration, and invasion	TWIST; GSK3β	(84, 85)
RNF20	Histone H2B	Promote (luminal)/inhibit (in basal-like)	Migration	ER (in luminal) and NF-κB (in basal-like)	(86, 87)
RNF144A	HSPA2	Inhibit	Migration and invasion	HSPA2	(88)
RNF208	Vimentin	Inhibit	Migration and invasion	Vimentin	(89)
SHAH1/2	p27	Promote	Migration and invasion	Rb	(90)
SKP2	AKT	Promote	Indirect evidence	PI3K/AKT	(91)
SCF-JFK	ING4	Promote	EMT, invasion, and angiogenesis	NF-κB	(92)
β-Trcp	PRLr/βCatenin	Promote	EMT, migration, and invasion	PRL,Wnt	(93, 94)
Smurf1	RhoA p120-catenin and TRAF4	Promote	EMT, migration, and invasion	TGFβ	(95-99)
Smurf2	Smurf1, CNKSR2	Promote/inhibit	Migration and invasion	TGFβ, PI3K/AKT	(100-104)
TRAF6	H2AX	Promote	Migration and invasion	HIF1 α	(105, 106)
TRIM8	E α	Inhibit	Migration and invasion	E α	(107)
TRIM11	E α	Promote	Migration	E α	(108)
TRIM44	N/A	Promote	Migration	NF-κB	(109)
TRIM47	N/A	Promote	EMT, migration, and invasion	PI3K/Akt	(110)
UBR5	N/A	Promote	EMT, migration, and invasion	STAT3, TGF α , P38MAPK	(111, 112)
UBR7	H2B	Inhibit	EMT, migration, and invasion	Wnt/β-catenin	(113)
WWP1	CXCR4 (indirect evidence)	Inhibit	Migration	TGFβ/Smad	(114)

(Continued)

TABLE 1 | Continued

E3	Substrate	Inhibit/Promote Metastasis	Cellular Function	Molecular Pathway	References
xIAP	TAK1	Promote	Invasion	TGFβ/Smad	(115)
UBE2O	AMPKα2	Promote	EMT, migration, invasion, and stemness	AMPK/mTOR	(116)

ASB13, ankyrin repeat and SOCS box containing 13; BCA2, breast cancer associated gene 2; Cbl-b, Cbl proto-oncogene B; CHIP, STIP1 homology and U-box containing protein 1; CXCR4, C-X-C motif chemokine receptor 4; SPOP, speckle type BTB/POZ protein; KCTD5, K⁺ channel tetramerization domain 5; FBXW7, F-box and WD repeat domain containing 7; FBXL8, F-box and leucine rich repeat protein 8; FBXL14, F-box and leucine rich repeat protein 14; FBXO11, F-box protein 11; FBXO22, F-box protein 22; FBXO31, F-box protein 31; FBXO32, F-box protein 32; GP78, autocrine motility factor receptor; HACE1, HECT domain and ankyrin repeat containing E3 ubiquitin protein ligase 1; HECTD1, HECT domain E3 ubiquitin protein ligase 1; HERC2, HECT and RLD domain containing E3 ubiquitin protein ligase 2; HERC4, HECT and RLD domain containing E3 ubiquitin protein ligase 4; MARCHF5, membrane associated ring-CH-type finger 5; MEX3C, mex-3 RNA binding family member C; NKLAM, Natural killer lytic-associated molecule; NRBE3, New RB E3 ubiquitin ligase; NRD1, also known as RNF41, ring finger protein 41; Parkin, parkin RBR E3 ubiquitin protein ligase; PDZRN4, PDZ domain containing ring finger 4; PPIL2, peptidylprolyl isomerase like 2; RNF, RING Finger Protein; RASSF1, Ras association domain family member 1; SIAH1/2, siah E3 ubiquitin protein ligase 1 and 2; SKP2, S-phase kinase associated protein 2; SCF, Skp-Cullin-F-box complex; β-Trcp, beta-transducin repeat containing E3 ubiquitin protein ligase; SMURF1 and SMURF2, SMAD specific E3 ubiquitin protein ligase 1 and 2; TRAF6, TNF receptor associated factor 6; TRIM8, TRIM11, TRIM44, TRIM47: tripartite motif containing 8, 11, 44 and 47; UBR5 and UBR7, ubiquitin protein ligase E3 component n-recognin 5 and 7; TWIST, twist family bHLH transcription factor 1; WWP1, WW domain containing E3 ubiquitin protein ligase 1; xIAP, X-linked inhibitor of apoptosis; UBE2O, ubiquitin conjugating enzyme E2 O; N/A, Not Available in the reference literature.

play important roles in tumorigenesis. The E3 ligase MDM2 has been characterized to target both tumor suppressor p53 and RB for proteasomal degradation, which promotes breast cancer cell invasion and migration *via* the p53/p21 pathway (70, 71). Nedd4 and carboxyl terminus of Hsc-70-interacting protein (CHIP) are two E3 ubiquitin ligases which function as regulators of tumor suppressor PTEN (123, 124). CHIP has been confirmed to promote breast cancer cell migration (41); the role of Nedd4 in breast cancer cell migration is not clear.

In the migration process, β-catenin and E-cadherin are two key proteins that function in cell–cell adhesion. SCF^{βTrcp} has been characterized to be the E3 ligase complex responsible for β-catenin degradation (93). As for E-cadherin, MDM2 has also been identified as responsible for its ubiquitin-dependent degradation (71). The E3 ligase new RB-E3 ligase protein (NRBE3) promotes breast cancer cell migration *via* E-cadherin but is not dependent on its E3 ligase property (79). Although it has been speculated that UBR5 might regulate E-cadherin through targeting substrates for proteasome-dependent degradation, both *in vivo* and *in vitro* ubiquitin assays were required for validation (111).

3.2.3 Breast Cancer Cell Stemness

Breast cancers are heterogenous. Although breast cancer stem cells (BCSCs) account for a very small percentage, they have the greatest ability of self-renewal and potential of unlimited differentiation capacity into heterogeneous tumor cell populations, all of which contribute to regenerate tumor at original or distant sites *in vivo*. Cancer cell stemness properties can be identified by several stem cell markers such as CD34, CD44, CD123, CD133, Oct4, Sox2, Nanog, ABCG2, and MYC and the conduction of cell stemness sphere assays (116, 125).

Not only is MYC a stem cell marker; it is also a well-characterized oncoprotein that is upregulated in 30–50% of breast cancer patients. MYC is regulated by AMPKα (AMP-activated protein kinase alpha subunit)/mTORC1 (mechanistic target of rapamycin kinase) axis. Ubiquitin-conjugating enzyme E2O (UBE2O), a large E2 ubiquitin-conjugating enzyme that represents both E2 and E3 ligase activities, is found to promote

AMPKα ubiquitination and degradation and then to activate the mTORC1-MYC signal pathway in breast cancer cells. By detection of stem cell markers and observation of cell stemness sphere formation, it is suggested that UBE2O endowed breast cells with cancer stemness properties (116).

In a study of the characteristics of BCSCs by selectively sorting cells with stem cell markers, another E3 ligase, Cbl, has been found to be involved in maintaining cancer cell stemness. EGFR is important for cancer stem cell maintenance and metastasis. Its turnover relies on the ubiquitin pathway. Cbl-c, a member of Cbl family, can target EGFR for k-63 linked ubiquitination and lysosomal degradation. By interfering with the binding of EGFR and its E3 ubiquitin ligase Cbl-c, a membrane protein sarcoglycan epsilon (SGCE) inhibits Cbl-c ubiquitin ability and stabilizes EGFR and then promotes breast cancer cell stemness (38).

Whether it is in regulating stem property-maintaining key proteins, or in the analysis of BCSCs' characteristics, E3 ubiquitin ligases have been found to play roles in regulating the pluripotency of BCSCs.

3.2.4 Angiogenesis

In the process of metastasis, to survive and initiate the secondary cancer foci, cells need the capability of adapting to supportive niches such as angiogenesis (8). Two members of E3 ligases complex were found to be functional in angiogenesis.

The Skp-CUL1-F-box ubiquitin ligase complex is one of the best-characterized multi-subunit RING finger complexes composed of four subunits. F-box protein 42 (Fbxo42, also known as JFK) is one of the F-box family proteins. It is demonstrated that JFK targets ING4 for ubiquitination and degradation through the assembly of an SCF^{JFK} ubiquitin ligase. ING4 is a member of the inhibitor of growth (ING) protein family, defined as tumor suppressors by directly interacting with p53 and promotes the transactivation of p53 and negatively regulates NF-κB-responsive gene transcription. The NF-κB pathway regulates the expression of several prominent pro-angiogenic factors, including IL-6, IL-8, CCL5, and COX-2. Degradation of ING4 by E3 ligase SCF^{JFK} results in the

destabilization of NF- κ B signaling and promotes angiogenesis. In breast cancer animal models, it was also observed that JFK-mediated metastasis takes the roots of lungs (92).

Another member of the SCF complex is Cullin1. In the tube formation assay, the knockdown of Cullin1 significantly decreased the number of complete tubule structures formed by human umbilical vein endothelial cells (HUVECs) *in vitro*. In the tail vein metastasis animal model, MDA-MB-231 cells with Cullin1 stable knockdown showed reduced vascularization and micro-vessels in matrigel plug (45). Cullin1 regulates the zeste 2 polycomb repressive complex 2 subunit (EZH2), which enhances cytokine expression through the NF- κ B pathway. The cytokine expression further results in aggravating the breast cancer cell metastasis through the PI3K-AKT-mTOR signaling pathway. Due to the lack of ubiquitin assays, it is unclear whether EZH2 is the substrate protein of Cullin1. Besides, in the SCF E3 ubiquitin complexes, Cullin1 often acts as a 'scaffold' protein; what the target-recognizing subunit in this complex is also needs to be clarified further.

Both JFK and Cullin1 regulated angiogenesis in breast cancer metastasis, through the NF- κ B pathway. It is noticed that three other E3 ubiquitin ligases, hydroxymethylglutaryl-coenzyme A reductase degradation protein 1 (HRD1) (65), ring finger protein 20 (RNF20) (86), and tripartite motif containing 44 (TRIM44) (109), were also found regulating the NF- κ B pathway. We need to pay attention to whether they are responsible for angiogenesis in breast cancer metastasis in addition to their existing roles.

3.2.5 Immunity Response/Rescue

The multiple steps of metastasis rely on reciprocal interactions between breast cancer cells and the microenvironment. Immune cells and their mediators are known to facilitate metastasis within the microenvironment (126). Natural killer (NK) cells play an essential role in the defense against viruses or microbial pathogens and malignancies produced by the body itself. In the process of immune response, NK cells execute anti-pathogen or anti-tumor activities that rely on the direct cytolytic activity of these cells and produce various cytokines (127). An E3 ubiquitin ligase, the natural killer lytic-associated molecule (NKLAM), has been characterized to play a major role in the cytolytic activity of NK cells and to control tumor development, dissemination, and distant metastasis *in vivo*. The target substrate of NKLAM in NK cells has not been directly determined yet (78).

Recently, ubiquitin protein ligase E3 component N-recognin 5 (UBR5) has been found to induce a CD8⁺ T cell-mediated immune response. The loss of UBR5 in breast cancer cells causes the appearance of certain putative immunogens' strong CD8⁺ T cell-mediated response in a paracrine manner (112). UBR5 has been previously found to be involved in TNBC metastasis (111). According to these two studies, the loss of UBR5 caused reduced angiogenesis and triggered aberrant EMT depending on the EMT regulators' inhibitor of DNA binding 1 and 3 (ID1 and ID3), which limited the metastasis of breast cancer. Although it was indicated that UBR5 executed its biological function principally *via* abrogated expression of E-cadherin, its specific ubiquitin substrate still needs validation through both *in vivo* and *in vitro* ubiquitin assays.

More and more evidences suggest that E3 ubiquitin ligases participate in the regulation of immunosuppression. Whether E3 can be used as combined targets of tumor immunotherapy in the future needs further research (126, 128).

Thus, the identifying regulators of each step in the process above should provide insights into the mechanisms that control breast cancer metastasis and hence patient survival.

3.3 Classification of Breast Cancer Metastasis-Related E3s Based on the Structure

Ubiquitination is a ubiquitous form of post-translational modification of proteins. In this process, E3s specifically bind to the substrate proteins, mediate the ligation of ubiquitin molecules and affect the specific proteins' turnover and functions. Thus, it is important to clarify the mechanism in target drug research and development (129). Do the mechanisms of these identified breast cancer metastasis E3 ligases have commonalities?

We classified the previously summarized E3 ligases of classical families based on their structures. The results suggested that the E3s involved in breast cancer metastasis belong to diversified classes, such as the HECT family, RING family, and U-box family (**Figure 2B**). There are eight E3 ligases that belong to the HECT family and are further classified into three subfamilies, including SMAD-specific E3 ubiquitin protein ligase 1 (Smurf1), SMAD-specific E3 ubiquitin protein ligase 2 (Smurf2), itchy E3 ubiquitin protein ligase (Itch) and WW domain-containing E3 ubiquitin protein ligase 1 (WWP1), NEDD4, belonging to the NEDD4 family, which contains a WW domain, C2 domain, and HECT domain; HECT and RLD domain which contains E3 ubiquitin protein ligases 2 and 4 (HERC2 and HERC4), as the HERC family, which contains the common RCC1-like domain (RLD) and HECT domain; and UBR5, as the "other" family, which contains a UBA domain, zinc finger domain, and HECT domain.

RING E3 ligases are further divided into two subtypes: single RING and multi-unit RING family. Several E3 ligases belong to single RING type (listed in **Figure 2B**, single RING family), performing a single-step ubiquitin transfer from the E2-Ub to the substrate, which work as allosteric activators. As for multi-subunit RING type, The Cullin-RING ubiquitin ligase (CRL) family is composed of a multi-unit. Most recognized CRLs are known as the SCF (SKP-Cullin-F-box) complex, in which Cullin1 interacts with Skp1 or Skp2 and utilizes various F-box proteins (shown in **Figure 2B**, F-box proteins) to recruit substrates and initiate ubiquitin ligation. Cullin7 also forms a SCF complex with SKP1 and F-box and WD repeat domain containing 8 (FBXW8). Cullin3-RBX1 (Ring-box1) E3 ubiquitin ligase complex requires BTB (Bric-a-brac-Tramtrack-Broad complex) domain protein as an adaptor. Two BTB proteins, speckle-type BTB/POZ protein (SPOP) and K⁺ channel tetramerization domain 5 (KCTD5), forms a complex with Cullin3, respectively.

Three E3 ubiquitin ligases, CHIP, NRBE3, and peptidylprolyl isomerase like 2 (PPIL2) belong to the U-box family, which contains a U-box domain. U-box E3s are also categorized as

RING-type E3s, but their molecular structure subtly differs in that zinc-bound sites are replaced by a hydrophobic core (29).

There are still many E3 ligases that cannot be characterized into classical types. Ankyrin repeat and SOCS box containing 13 (ASB13) belongs to the ankyrin repeat and suppressor of cytokine signaling (SOCS) box (Asb), which contains six-ankyrin repeat domain (34, 130). The UBR-box is a 70-residue zinc finger domain present in the UBR family of E3 ubiquitin ligases. Unlike UBR5, which also contains an HECT domain, the structures responsible for UBR7 executing its E3 role need to be verified by *in vitro* ubiquitin assays (113, 131, 132). Intriguingly, UBE2O, an E2/E3 hybrid ubiquitin-protein ligase, displays both E2 ubiquitin conjugating enzyme and E3 ubiquitin ligase activities (116, 133). Compared to classical types, the specific catalytic mechanism of several non-classical E3s will need more efforts to be figured out in the future.

3.4 Analysis and Summary of E3 Ubiquitin Ligases Significantly Correlated With Breast Cancer Patients' Survival

Since the E3s are involved in breast cancer metastasis, are they associated with patients' survival? Through the analysis of literatures, we found that out of the 54 E3 ligases, 31 have been reported to be related to the survival of patients (Table 2, from "ASB13" to "UBE2O"). The other 23 E3 ubiquitin ligases lack clinical data to determine whether they have clinical significance. Although some of them have verified the specific roles involved in metastasis by cellular experiments and animal models, these E3 ligases' relationships with breast cancer patients' survival need to be elucidated. Therefore, we used publicly available clinical data to conduct survival analysis (only in which the literature were claimed to have been verified by molecular and animal experiments).

By comparing with molecular mechanism, five E3 ligases have been found to be significantly correlated with the DMFS of breast cancer patients. As illustrated in Kaplan–Meier plots (Figure 4), we conducted the survival analysis of Arkadia (Figure 4A), NKLAM (Figure 4B), PPIL2 (Figure 4C), Smurf1 (Figure 4D), and Smurf2 (Figure 4E), which is consistent with the laboratory mechanism previously found. Patients with high expression of Arkadia (Hazard Ratio: 0.73; Logrank P: 0.00046), NKLAM (Hazard Ratio: 0.77; Logrank P: 0.00086), and PPIL2 (Hazard Ratio: 0.78; Logrank P: 0.0085), which have an inhibitory effect on metastasis, have higher survival probability. Patients with high expression of Smurf1 (Hazard Ratio: 1.34; Logrank P: 0.0022) and Smurf2 (Hazard Ratio: 1.52; Logrank P: 1.9e-07) have lower survival probability. Combining this analysis results with summarized literature reports, E3 ubiquitin ligases which are significantly correlated with patients' survival were presented in Table 2.

Interestingly, we found that some results of survival analysis were contrary to the molecular mechanism. For example, if all subtypes of breast patients were considered together, a higher expression of MDM2 showed better survival (Hazard Ratio: 0.81; Logrank P: 0.015) (Figure 4F), which was obviously contrary to known molecular mechanisms. MDM2 has been well proven to

be an E3 ubiquitin ligase that simultaneously targets tumor suppressor protein RB and P53 to degradation. We further analyzed different subtypes and found that it was opposite in patients with luminal A (Hazard Ratio: 1.5; Logrank P: 0.0041) (Figure 4G) and basal subtype (Hazard Ratio: 0.69; Logrank P: 0.019) (Figure 4H). This suggests that the heterogeneity of breast cancer cannot be ignored. In addition, it might be affected by the expression level or mutation of ubiquitin substrates, such as the status of p53 mutation or loss of RB. The context-dependent role of E3s and breast cancer subtypes need to be considered more in future survival analyses.

4 DISCUSSION

In the past decades, dozens of studies have demonstrated that many E3 ubiquitin ligases play very important roles in breast cancer metastasis. E3 ligases were involved in the multiple steps of breast cancer metastasis, including EMT, invasion and migration, cell stemness, angiogenesis, and immunity response in the tumor microenvironment.

Typical E3s' functions comprise of recognition and recruiting a specific protein to be modified and then catalyzing ubiquitin molecule discharge from an active-site cysteine onto the recruited substrate or a substrate-linked ubiquitin. Through this posttranslational modification, E3 ligases can alter the fate of their protein substrates, transducing different signals, which is critical for breast cancer metastasis. For example, the E3 ligase Cbl-b mediates the ubiquitination and degradation of EGFR, which inhibits metastatic breast cancer cells' EMT. And another E3 ligase, MEX3C, catalyzes the tumor suppressor PTEN with K27-linked polyubiquitination and alters its enzymatic function, which leads to the accumulation of the master regulators of EMT, including twist family bHLH transcription factor 1 (TWIST1), Yes1-associated transcriptional regulator (YAP1), and SNAI1.

In light of the vital roles of E3 ubiquitin ligases in breast cancer metastasis, targeting them for cancer therapy has gained increasing attention. Notably, bortezomib, a proteasome inhibitor, was approved by the Food and Drug Administration (FDA) of United States to treat multiple myeloma and certain lymphomas, which encourages more and more researchers to screen the small molecular inhibitors of particular E3 ligases for anti-metastatic breast cancer. We queried with the key words of each E3 ubiquitin ligase names and their aliases in the AACT (Public Access to Aggregate Content of ClinicalTrials.gov, <https://aact.ctti-clinicaltrials.org/>) database, which is a publicly available relational database that contains information (protocol and result data elements) about every study registered in ClinicalTrials.gov. However, only the inhibitor for MDM2 has been registered for breast cancer treatment in undergoing clinical trials. It offers great opportunity for future pharmacological exploitation.

Though it is believed that inhibiting and redirecting ubiquitination *in vivo* are new therapeutic strategies, especially specific inhibitors of E3 ubiquitin ligase will be discovered and developed as a novel class of anticancer drugs in the foreseeable

TABLE 2 | E3s are significantly correlated with patients' survival.

E3s	Clinical Significance								
	Population	DetectionType	Method of Detection	Expressing Difference	Categorization	Survival Analysis	HR	95%CI	Logrank P
ASB13	NA	mRNA	RNA-seq	Expressing difference	High vs. Low	OS	0.67	NA	5.7e-09
BCA2	3,554	mRNA	RNA-seq	Expressing difference (in subtype cell lines)	High vs. Low	OS (in subtypes)	LuminalA: 1.21 LuminalB: 1.41 Basal: 1.25 HER2+: 1.54	1-1.46 1.14-1.75	0.046 0.0018 0.1 0.044
Cbl-b	292	Protein	IHC	Expressing difference	Positive vs. Negative	OS, DFS	OS: 0.550 DFS: 0.616	0.341-0.888 0.414-0.917	0.013 0.016
COP1	105	Protein	IHC	Expressing difference	Positive vs. Negative	OS, RFS	RR: 0.65	0.149-6.732	P < 0.001
Cullin7	103	Protein	IHC	Expressing difference	Positive vs. Negative	OS	NA	NA	P < 0.05
FBXL14	1,764	mRNA	RNA-seq	Expressing difference	High vs. Low	RFS	NA	NA	P < 0.0001
FBXO11	OS: 1,402 RFS: 3,951 MFS: NA	mRNA	RNA-seq	Expressing difference	High vs. Low	OS, RFS MFS	OS: 1.37 RFS: 1.46 MFS: 0.64	1.08-1.74 1.31-1.63 NA	0.01 P < 0.0001 0.04
FBXO22	410	Protein	IHC	Expressing difference	Positive vs. Negative	OS, DFS	OS: 0.604 DFS: 0.536	0.398-0.918 0.315-0.912	0.018 0.021
GP78	108	Protein	IHC	Expressing difference	Positive vs. Negative	OS, DFS	NA	NA	<0.001
HACE1	1,764	mRNA	RNA-seq	Expressing difference	High vs. Low	RFS	1.40	1.20-1.64	<0.0001
HectD1	1,864	mRNA	RNA-seq	Expressing difference	High vs. Low	OS	NA	NA	1.00e-16
HERC4	161	mRNA	RNA-seq	Expressing difference	High vs. Low	OS	NA	NA	0.029
HRD1	170	Protein	IHC	Expressing difference	Positive vs. Negative	OS	NA	NA	<0.01
ITCH	OS: 1,115 RFS: 3,455; DMFS: 1,609	mRNA	RNA-seq	Expressing difference	Low vs. High	OS, RFS, DMFS, PPS	OS: 1.47 RFS: 1.39 DMFS: 1.39 PPS: 1.3	1.15-1.87 1.24-1.56 1.14-1.71	0.0016 2.2e-08 0.0013
MARCH5	PPS: 351 RNA: 1,081; IHC: 65	mRNA Protein	RNA-seq IHC	Expressing difference	High vs. Low Positive vs. Negative	OS	NA	NA	0.048 0.029
Parkin	RNA: 3,951 IHC: 168	mRNA Protein	RNA-seq IHC	Expressing difference	High vs. Low Tumor vs. non-tumor	RFS, DMFS	NA	NA	2.4e-13 0.0090
PDZRN4	81	mRNA Protein	RNA-seq IHC, WB	Expressing difference	Low vs. High	OS, DFS	OS: 1.663 DFS: 1.840	1.013-2.731 1.126-3.007	0.044 0.015
RNF8	IHC: 202 RNA: 3,315	Protein mRNA	IHC RNA-seq	Expressing difference	Low vs. High	OS, RFS, DMFS, PPS	OS: 1.31 RFS: 1.15 DMFS: 1.43 PPS: 1.22	1.02-1.68 1.03-1.29 1.17-1.76	0.035 0.013 0.00056 0.16
RNF144A	166	Protein	IHC	Expressing difference	Low vs. High	OS, DMFS	NA	NA	<0.05
RNF208	3,951	mRNA	qRT-PCR RNA-seq	Expressing difference in subtype	Low vs. High	RFS	0.76	0.69-0.85	<0.001
SIAH2	235	Protein	IHC	Expressing difference	Low vs. High	OS (ER+)	0.68	0.52-0.89	<0.005
SKP2	80	Protein	IHC	Expressing difference in subtype	Low vs. High	OS (Her2+)	NA	NA	0.0002
SCF-JFK	NA	mRNA	RNA-seq	Expressing difference	Low vs. High	OS	LuminalA: 0.94 Basal: 7.24	NA	0.035 0.035
TRAF6	212	Protein	IHC	Expressing difference	Low vs. High	DMFS	NA	NA	<0.001

(Continued)

TABLE 2 | Continued

E3s	Clinical Significance								
	Population	DetectionType	Method of Detection	Expressing Difference	Categorization	Survival Analysis	HR	95%CI	Logrank P
TRIM8	IHC: 91 RNA: NA	Protein mRNA	IHC RNA-seq	Expressing difference	Low vs. High	OS	All type: 0.69	0.58–0.81	3.8e–06
TRIM11	NA	mRNA	RNA-seq	Expressing difference	Low vs. High	OS RFS	ER+: 0.71 OS: 1.63 RFS: 1.57	0.53–0.96 1.2–2.22 1.01–2.42	0.025 0.005 0.027
TRIM44	129	Protein	IHC	Expressing difference	Low vs. High	OS DMFS	NA NA	NA NA	0.031 0.027
UBR5	IHC: 54 RNA: NA	Protein mRNA	IHC RNA-seq	Expressing difference	Tumor vs. non-tumor Low vs. High	mRNA OS	NA	NA	0.011
UBR7	47	mRNA	RNA-seq	Expressing difference	Low vs. High	DMFS	0.31	0.1–0.98	0.036
WWP1	33 and 179	Protein	IHC	Expressing difference	Positive vs. Negative	DMFS	NA	NA	<0.05
UBE2O	RNA: 3,951 IHC: 50	mRNA Protein	RNA-seq IHC, WB	Expressing difference	Low vs. High	OS, DMFS	IHC OS: NA mRNA OS: 1.63 DMFS: 1.54	NA 1.3–2.04 1.25–1.89	P < 0.05 1.5e–05 4e–05
Arkadia	2,765	mRNA	RNA-seq	NA	Low vs. High	DMFS	0.73	0.62–0.87	0.00046
MDM2	2,765	mRNA	RNA-seq	Expressing difference	Low vs. High	DMFS	All type: 0.81 LuminalA: 1.5 Basal: 0.69	0.69–0.96 1.14–1.99 0.5–0.94	0.015 0.0041 0.019
NKLAM	2,765	mRNA	RNA-seq	NA	Low vs. High	DMFS	0.77	0.66–0.9	0.00086
PPIL2	2,765	mRNA	RNA-seq	Expressing difference	Low vs. High	DMFS	0.78	0.65–0.94	0.0085
Smurf1	2,765	mRNA	RNA-seq	NA	Low vs. High	DMFS	1.34	1.11–1.62	0.0022
Smurf2	2,765	mRNA	RNA-seq	NA	Low vs. High	DMFS	1.52	1.3–1.78	1.9e–07

IHC, immunohistochemical (IHC) staining; WB, western blot; OS, overall survival; DFS, disease-free survival; RFS, relapse-free survival; DMFS, distant metastasis-free survival; PPS, post-progression survival; BCSS, breast cancer-specific survival; HR, hazard ratio; 95%CI, 95% confidence intervals; RR, relative risk; NA, not available in the reference literature.

future, we are still facing significant challenges so far. Firstly, the specific substrate of E3 ligase had been elucidated in few studies and needs to be identified, especially in the process of breast cancer metastasis. Recent advances in high-throughput screening chemical methods have revolutionized our ability to match E3 ubiquitin ligases with their cellular targets (134), like the UBAIT (ubiquitin-activated interaction traps strategy), which relies on a ubiquitin molecule covalently fused to the E3 ligase of interest being charged onto E2 enzymes. Using the affinity enrichment of tagged UBAITs with following mass spectrometry can identify substrates of several E3s (135). Both *in vivo* and *in vitro* ubiquitin assays are also suggested to be used for the validation of E3 ligase substrates. Secondly, the substrate recognition specificity of E3 ligases needs to be understand more deeply in breast cancer metastasis, which is critical for the efficient small-molecule inhibition of substrate degradation. Comparing proteins modified in cell lysates *versus* when an E3 ligase is depleted will allow the identification of substrates (134, 136). Thirdly, structural bases and ubiquitin mechanisms facilitate with further exploit pharmacological strategy. For example, typical HECT family E3s harbor catalytic cysteines that first receive ubiquitin molecule from a bound E2~Ub intermediate and then directly deliver the ubiquitin to the substrate protein, which can pharmacologically

target the catalytic cysteines of E3s (134). Instead, there are still several non-classical E3s whose structure and specific ubiquitin transfer mechanisms remain unknown. Finally, E3 ligases exhibit distinct or even opposite functions in different breast cancer subtypes, suggesting that a subtype-specific approach to E3 ligase substrates and inhibitor screening is required. A good example is K⁺ channel tetramerization domain 10 (KCTD10), a BTB protein, as an adaptor protein that forms E3 ubiquitin ligase complex with Cullin3. CUL3/KCTD10 ubiquitinated RhoB for K63-linked ubiquitin degradation and promote HER2-positive breast cancer cell proliferation (137, 138). Two downstream proteins of RhoB, RAC1 (Rho GTPase) and CNKSR1 (connector enhancer of kinase suppressor of Ras1), were found to be significantly correlated with the prognosis of HER2-positive breast cancer patients (138, 139). Beyond small-molecule inhibitors, proteolysis-targeting chimeras (PROTACs), which can induce the recruitment of E3 to target protein, have recently emerged as significant future therapeutic opportunities (140, 141).

In addition, breast cancer cell-secreted exosomes have been found to play roles in the microenvironment and enhance the invasiveness of recipient cells, which contribute to breast cancer invasion through the EGFR signaling (142, 143). An exosome-mediated delivery of the intrinsic PTEN-stabilizing factor PTEN-

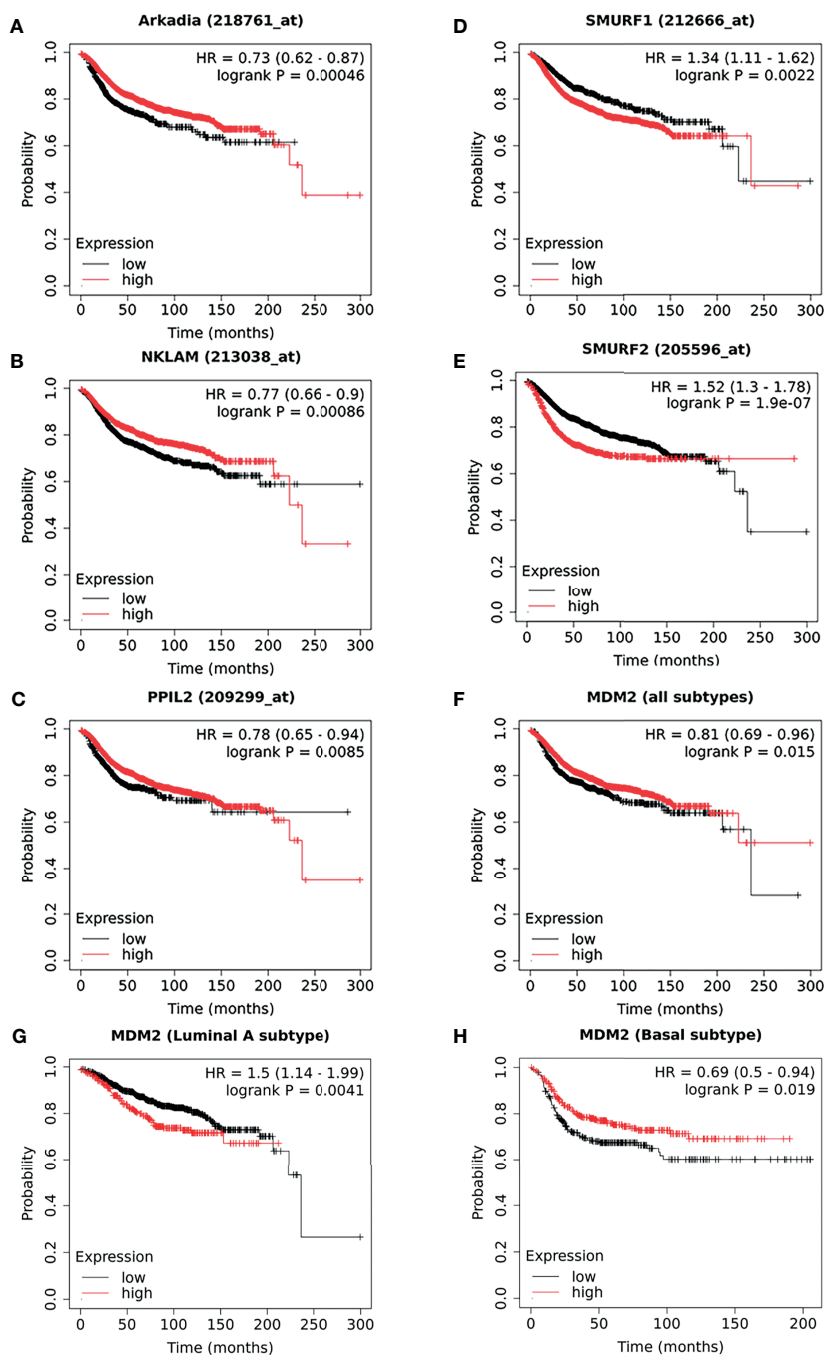


FIGURE 4 | The survival curves comparing patients with high and low expressions of E3s in breast cancer patients. As a supplement to the literatures, the survival analysis of Arkadia (**A**), NKLAM (**B**), PPIL2 (**C**), Smurf1 (**D**), and Smurf2 (**E**), which were illustrated as a Kaplan–Meier plot. Distant metastasis-free survival curves for high (red) and low (black) expression groups dichotomized at the optimal cut-point. The survival analysis of MDM2 in breast cancer was shown as all types (**F**), luminal A (**G**) subtype, and basal subtype (**H**), respectively. Logrank P-value and the hazard ratio with 95% confidence intervals was calculated. The threshold was adjusted to logrank P-values at < 0.05.

CT (Carbon Terminus) has been found to protect PTEN from E3 ligase-mediated proteasomal degradation and then inhibit breast cancer cell proliferation and migration (144). It suggests that not only intracellular ubiquitination but also intercellular

ubiquitination (like exosome-mediated migratory delivery) should be followed with interest in the future.

With >700 E3 ligases in the human genome, including but not limited to the 54 E3s that have been identified to be involved in

breast cancer metastasis, it has become clear that some of them are promising therapeutic targets or prognostic markers for breast cancer.

DATA AVAILABILITY STATEMENT

The original contributions presented in the study are included in the article/supplementary material. Further inquiries can be directed to the corresponding authors.

AUTHOR CONTRIBUTIONS

YW, JG and JL designed this study. YW contributed to the conception, acquisition, analysis, and interpretation of data and drafted the manuscript. JD and YZ contributed to the acquisition of data. Schematic diagrams were drawn by JD. JG and JL contributed to the interpretation of data and critically revised the manuscript. All authors contributed to the article and approved the submitted version.

REFERENCES

1. Ferlay JEM, Lam F, Colombet M, Mery L, Piñeros M, Znaor A, et al. Global Cancer Observatory: Cancer Today. Lyon, France: International Agency for Research on Cancer (2020) Available at: <https://gco.iarc.fr/today>.
2. Fahad Ullah M. Breast Cancer: Current Perspectives on the Disease Status. *Adv Exp Med Biol* (2019) 1152:51–64. doi: 10.1007/978-3-030-20301-6_4
3. Ferlay JEM, Lam F, Colombet M, Mery L, Piñeros M, Znaor A, et al. *World Cancer Day: Breast Cancer Overtakes Lung Cancer in Terms of Number of New Cancer Cases Worldwide*. Lyon, France: International Agency for Research on Cancer (2020). Available at: <https://iarc.who.int/news-events/world-cancer-day-2021/>.
4. Weigelt B, Peterse JL, van 't Veer LJ. Breast Cancer Metastasis: Markers and Models. *Nat Rev Cancer* (2005) 5(8):591–602. doi: 10.1038/nrc1670
5. Mansour M, Haupt S, Chan AL, Godde N, Rizzitelli A, Loi S, et al. The E3-Ligase E6AP Represses Breast Cancer Metastasis via Regulation of ECT2-Rho Signaling. *Cancer Res* (2016) 76(14):4236–48. doi: 10.1158/0008-5472.Can-15-1553
6. Ye X, Tam WL, Shibue T, Kaygusuz Y, Reinhardt F, Ng Eaton E, et al. Distinct EMT Programs Control Normal Mammary Stem Cells and Tumour-Initiating Cells. *Nature* (2015) 525(7568):256–60. doi: 10.1038/nature14897
7. Hayes DF, Smerage J. Is There a Role for Circulating Tumor Cells in the Management of Breast Cancer? *Clin Cancer Res* (2008) 14(12):3646–50. doi: 10.1158/1078-0432.CCR-07-4481
8. Carmeliet P, Jain RK. Principles and Mechanisms of Vessel Normalization for Cancer and Other Angiogenic Diseases. *Nat Rev Drug Discov* (2011) 10(6):417–27. doi: 10.1038/nrd3455
9. Melzer C, von der Ohe J, Hass R. Breast Carcinoma: From Initial Tumor Cell Detachment to Settlement at Secondary Sites. *BioMed Res Int* (2017) 2017:8534371. doi: 10.1155/2017/8534371
10. Komander D, Rape M. The Ubiquitin Code. *Annu Rev Biochem* (2012) 81:203–29. doi: 10.1146/annurev-biochem-060310-170328
11. Mark KG, Rape M. Ubiquitin-Dependent Regulation of Transcription in Development and Disease. *EMBO Rep* (2021) 22(4):e51078. doi: 10.15252/embr.202051078
12. Pickart CM. Mechanisms Underlying Ubiquitination. *Annu Rev Biochem* (2001) 70:503–33. doi: 10.1146/annurev-biochem.70.1.503
13. Pickart CM. Back to the Future With Ubiquitin. *Cell* (2004) 116(2):181–90. doi: 10.1016/S0092-8674(03)01074-2

FUNDING

This work was supported by the National Natural Science Foundation of China (82003001, 82003227); China Postdoctoral Science Foundation (2019M663516, 2021T140487); Post-Doctor Research Project, Sichuan University (20826041D4022); Post-Doctor Research Project, West China Hospital, Sichuan University (2018HXBH067); Sichuan Provincial Research Foundation for Basic Research (2020YFS0272); and Sichuan Science and Technology Program (2020YJ0046).

ACKNOWLEDGMENTS

We sincerely appreciate all the contributors to references listed. We also thank Prof. Haiquan Lu (Advanced Medical Research Institute, Cheeloo College of Medicine, Shandong University) and Prof. Yongkang Yan (Institute for Cell Engineering, Johns Hopkins University School of Medicine) for their valuable comments and suggestions. Schematic figures were produced using Servier Medical Art (<https://smart.servier.com/>).

14. Chau V, Tobias JW, Bachmair A, Marriotti D, Ecker DJ, Gonda DK, et al. A Multiubiquitin Chain Is Confined to Specific Lysine in a Targeted Short-Lived Protein. *Science* (1989) 243(4898):1576–83. doi: 10.1126/science.2538923
15. Jin L, Williamson A, Banerjee S, Philipp I, Rape M. Mechanism of Ubiquitin-Chain Formation by the Human Anaphase-Promoting Complex. *Cell* (2008) 133(4):653–65. doi: 10.1016/j.cell.2008.04.012
16. Berndsen CE, Wolberger C. New Insights Into Ubiquitin E3 Ligase Mechanism. *Nat Struct Mol Biol* (2014) 21(4):301–7. doi: 10.1038/nsmb.2780
17. Dittmar G, Selbach M. Deciphering the Ubiquitin Code. *Mol Cell* (2017) 65(5):779–80. doi: 10.1016/j.molcel.2017.02.011
18. Yau R, Rape M. The Increasing Complexity of the Ubiquitin Code. *Nat Cell Biol* (2016) 18(6):579–86. doi: 10.1038/ncb3358
19. Gatti M, Pinato S, Maiolica A, Rocchio F, Prato MG, Aebersold R, et al. RNF168 Promotes Noncanonical K27 Ubiquitination to Signal DNA Damage. *Cell Rep* (2015) 10(2):226–38. doi: 10.1016/j.celrep.2014.12.021
20. Liu J, Han C, Xie B, Wu Y, Liu S, Chen K, et al. Rhd3 Controls Autoimmunity by Suppressing the Production of IL-6 by Dendritic Cells via K27-Linked Ubiquitination of the Regulator NEMO. *Nat Immunol* (2014) 15(7):612–22. doi: 10.1038/ni.2898
21. Yuan WC, Lee YR, Lin SY, Chang LY, Tan YP, Hung CC, et al. K33-Linked Polyubiquitination of Coronin 7 by Cul3-KLHL20 Ubiquitin E3 Ligase Regulates Protein Trafficking. *Mol Cell* (2014) 54(4):586–600. doi: 10.1016/j.molcel.2014.03.035
22. Uckelmann M, Sixma TK. Histone Ubiquitination in the DNA Damage Response. *DNA Repair (Amst)* (2017) 56:92–101. doi: 10.1016/j.dnarep.2017.06.011
23. Weake VM, Workman JL. Histone Ubiquitination: Triggering Gene Activity. *Mol Cell* (2008) 29(6):653–63. doi: 10.1016/j.molcel.2008.02.014
24. Rotin D, Kumar S. Physiological Functions of the HECT Family of Ubiquitin Ligases. *Nat Rev Mol Cell Biol* (2009) 10(6):398–409. doi: 10.1038/nrm2690
25. Deshaies RJ, Joazeiro CA. RING Domain E3 Ubiquitin Ligases. *Annu Rev Biochem* (2009) 78:399–434. doi: 10.1146/annurev-biochem.78.101807.093809
26. Singh S, Ng J, Sivaraman J. Exploring the “Other” Subfamily of HECT E3-Ligases for Therapeutic Intervention. *Pharmacol Ther* (2021) 224:107809. doi: 10.1016/j.pharmthera.2021.107809
27. Wang M, Pickart CM. Different HECT Domain Ubiquitin Ligases Employ Distinct Mechanisms of Polyubiquitin Chain Synthesis. *EMBO J* (2005) 24(24):4324–33. doi: 10.1038/sj.emboj.7600895

28. Petroski MD, Deshaies RJ. Function and Regulation of Cullin-RING Ubiquitin Ligases. *Nat Rev Mol Cell Biol* (2005) 6(1):9–20. doi: 10.1038/nrm1547
29. Ohi MD, Vander Kooi CW, Rosenberg JA, Chazin WJ, Gould KL. Structural Insights Into the U-Box, a Domain Associated With Multi-Ubiquitination. *Nat Struct Biol* (2003) 10(4):250–5. doi: 10.1038/nsb906
30. Mizuno H, Kitada K, Nakai K, Sarai A. Prognoscan: A New Database for Meta-Analysis of the Prognostic Value of Genes. *BMC Med Genomics* (2009) 2:18. doi: 10.1186/1755-8794-2-18
31. Wang Y, Song Z, Leng P, Liu Y. A Systematic Analysis Reveals Gene Expression Alteration of Serum Deprivation Response (SDPR) Gene Is Significantly Associated With the Survival of Patients With Cancer. *Oncol Rep* (2019) 42(3):1161–72. doi: 10.3892/or.2019.7212
32. Nagy A, Munkacsy G, Gyorffy B. Pancancer Survival Analysis of Cancer Hallmark Genes. *Sci Rep* (2021) 11(1):6047. doi: 10.1038/s41598-021-84787-5
33. Le Scolan E, Zhu Q, Wang L, Bandyopadhyay A, Javelaud D, Mauviel A, et al. Transforming Growth Factor- β Suppresses the Ability of Ski to Inhibit Tumor Metastasis by Inducing Its Degradation. *Cancer Res* (2008) 68(9):3277–85. doi: 10.1158/0008-5472.Can-07-6793
34. Fan H, Wang X, Li W, Shen M, Wei Y, Zheng H, et al. ASB13 Inhibits Breast Cancer Metastasis Through Promoting SNAI2 Degradation and Relieving Its Transcriptional Repression of YAP. *Genes Dev* (2020) 34(19–20):1359–72. doi: 10.1101/gad.339796.120
35. Wang W, Qu M, Wang J, Zhang X, Zhang H, Wu J, et al. Autoubiquitination of Feline E3 Ubiquitin Ligase BCA2. *Gene* (2018) 638:1–6. doi: 10.1016/j.gene.2017.09.059
36. Amemiya Y, Azmi P, Seth A. Autoubiquitination of BCA2 RING E3 Ligase Regulates Its Own Stability and Affects Cell Migration. *Mol Cancer Res* (2008) 6(9):1385–96. doi: 10.1158/1541-7786.MCR-08-0094
37. Xu L, Zhang Y, Qu X, Che X, Guo T, Cai Y, et al. E3 Ubiquitin Ligase Cbl-B Prevents Tumor Metastasis by Maintaining the Epithelial Phenotype in Multiple Drug-Resistant Gastric and Breast Cancer Cells. *Neoplasia* (2017) 19(4):374–82. doi: 10.1016/j.neo.2017.01.011
38. Zhao L, Qiu T, Jiang D, Xu H, Zou L, Yang Q, et al. SGCE Promotes Breast Cancer Stem Cells by Stabilizing EGFR. *Adv Sci (Weinh)* (2020) 7(14):1903700. doi: 10.1002/advs.201903700
39. Fan Y, Qu X, Ma Y, Liu Y, Hu X. Cbl-B Promotes Cell Detachment via Ubiquitination of Focal Adhesion Kinase. *Oncol* (2016) 12(2):1113–8. doi: 10.3892/ol.2016.4730
40. Zhang L, Teng Y, Fan Y, Wang Y, Li W, Shi J, et al. The E3 Ubiquitin Ligase Cbl-B Improves the Prognosis of RANK Positive Breast Cancer Patients by Inhibiting RANKL-Induced Cell Migration and Metastasis. *Oncotarget* (2015) 6(26):22918–33. doi: 10.18632/oncotarget.4382
41. Xu J, Wang H, Li W, Liu K, Zhang T, He Z, et al. E3 Ubiquitin Ligase CHIP Attenuates Cellular Proliferation and Invasion Abilities in Triple-Negative Breast Cancer Cells. *Clin Exp Med* (2020) 20(1):109–19. doi: 10.1007/s10238-019-00594-3
42. Choi YN, Lee SK, Seo TW, Lee JS, Yoo SJ. C-Terminus of Hsc70-Interacting Protein Regulates Profilin1 and Breast Cancer Cell Migration. *Biochem Biophys Res Commun* (2014) 446(4):1060–6. doi: 10.1016/j.bbrc.2014.03.061
43. Ouyang M, Wang H, Ma J, Lü W, Li J, Yao C, et al. COP1, the Negative Regulator of ETV1, Influences Prognosis in Triple-Negative Breast Cancer. *BMC Cancer* (2015) 15:132. doi: 10.1186/s12885-015-1151-y
44. Shao J, Teng Y, Padia R, Hong S, Noh H, Xie X, et al. COP1 and GSK3 β Cooperate to Promote C-Jun Degradation and Inhibit Breast Cancer Cell Tumorigenesis. *Neoplasia* (2013) 15(9):1075–85. doi: 10.1593/neo.13966
45. Huang YF, Zhang Z, Zhang M, Chen YS, Song J, Hou PF, et al. CUL1 Promotes Breast Cancer Metastasis Through Regulating EZH2-Induced the Autocrine Expression of the Cytokines CXCL8 and IL11. *Cell Death Dis* (2018) 10(1):2. doi: 10.1038/s41419-018-1258-6
46. Zhang N, Sun P, Xu Y, Li H, Liu H, Wang L, et al. The GPER1/SPOP Axis Mediates Ubiquitination-Dependent Degradation of Er α to Inhibit the Growth of Breast Cancer Induced by Oestrogen. *Cancer Lett* (2020) 498:54–69. doi: 10.1016/j.canlet.2020.10.019
47. Gao K, Jin X, Tang Y, Ma J, Peng J, Yu L, et al. Tumor Suppressor SPOP Mediates the Proteasomal Degradation of Progesterone Receptors (PRs) in Breast Cancer Cells. *Am J Cancer Res* (2015) 5(10):3210–20.
48. Rivas J, Díaz N, Silva I, Morales D, Lavanderos B, Álvarez A, et al. KCTD5, a Novel TRPM4-Regulatory Protein Required for Cell Migration as a New Predictor for Breast Cancer Prognosis. *FASEB J* (2020) 34(6):7847–65. doi: 10.1096/fj.201901195RRR
49. Qiu N, He Y, Zhang S, Hu X, Chen M, Li H. Cullin 7 Is a Predictor of Poor Prognosis in Breast Cancer Patients and Is Involved in the Proliferation and Invasion of Breast Cancer Cells by Regulating the Cell Cycle and Microtubule Stability. *Oncol Rep* (2018) 39(2):603–10. doi: 10.3892/or.2017.6106
50. Ahn JS, Ann EJ, Kim MY, Yoon JH, Lee HJ, Jo EH, et al. Autophagy Negatively Regulates Tumor Cell Proliferation Through Phosphorylation Dependent Degradation of the Notch1 Intracellular Domain. *Oncotarget* (2016) 7(48):79047–63. doi: 10.18632/oncotarget.12986
51. Chiang CH, Chu PY, Hou MF, Hung WC. MiR-182 Promotes Proliferation and Invasion and Elevates the HIF-1 α -VEGF-A Axis in Breast Cancer Cells by Targeting FBXW7. *Am J Cancer Res* (2016) 6(8):1785–98.
52. Chang SC, Hsu W, Su EC, Hung CS, Ding JL. Human FBXL8 Is a Novel E3 Ligase Which Promotes BRCA Metastasis by Stimulating Pro-Tumorigenic Cytokines and Inhibiting Tumor Suppressors. *Cancers* (2020) 12(8):07. doi: 10.3390/cancers12082210
53. Cui YH, Kim H, Lee M, Yi JM, Kim RK, Uddin N, et al. FBXL14 Abolishes Breast Cancer Progression by Targeting CDCP1 for Proteasomal Degradation. *Oncogene* (2018) 37(43):5794–809. doi: 10.1038/s41388-018-0372-3
54. Bagger SO, Hopkinson BM, Pandey DP, Bak M, Brydholm AV, Villadsen R, et al. Aggressiveness of Non-EMT Breast Cancer Cells Relies on FBXO11 Activity. *Mol Cancer* (2018) 17(1):171. doi: 10.1186/s12943-018-0918-6
55. Zheng H, Shen M, Zha YL, Li W, Wei Y, Blanco MA, et al. PKD1 Phosphorylation-Dependent Degradation of SNAI1 by SCF-FBXO11 Regulates Epithelial-Mesenchymal Transition and Metastasis. *Cancer Cell* (2014) 26(3):358–73. doi: 10.1016/j.ccr.2014.07.022
56. Bai J, Wu K, Cao MH, Yang Y, Pan Y, Liu H, et al. SCF(FBXO22) Targets HDM2 for Degradation and Modulates Breast Cancer Cell Invasion and Metastasis. *Proc Natl Acad Sci USA* (2019) 116(24):11754–63. doi: 10.1073/pnas.1820990116
57. Manne RK, Agrawal Y, Bargale A, Patel A, Paul D, Gupta NA, et al. A MicroRNA/Ubiquitin Ligase Feedback Loop Regulates Slug-Mediated Invasion in Breast Cancer. *Neoplasia* (2017) 19(6):483–95. doi: 10.1016/j.neo.2017.02.013
58. Chen D, Yuan M, Ye Q, Wang X, Xu J, Shi G, et al. Cyanidin-3-O-Glucoside Inhibits Epithelial-to-Mesenchymal Transition, and Migration and Invasion of Breast Cancer Cells by Upregulating KLF4. *Food Nutr Res* (2020) 64:4240–50. doi: 10.29219/fnr.v64.4240
59. Chang YW, Chen HA, Tseng CF, Hong CC, Ma JT, Hung MC, et al. De-Acetylation and Degradation of HSPA5 Is Critical for E1A Metastasis Suppression in Breast Cancer Cells. *Oncotarget* (2014) 5(21):10558–70. doi: 10.18632/oncotarget.2510
60. Chang YW, Tseng CF, Wang MY, Chang WC, Lee CC, Chen LT, et al. Deacetylation of HSPA5 by HDAC6 Leads to GP78-Mediated HSPA5 Ubiquitination at K447 and Suppresses Metastasis of Breast Cancer. *Oncogene* (2016) 35(12):1517–28. doi: 10.1038/nc.2015.214
61. Kim I, Shin SH, Lee JE, Park JW. Oxygen Sensor FIH Inhibits HACE1-Dependent Ubiquitination of Rac1 to Enhance Metastatic Potential in Breast Cancer Cells. *Oncogene* (2019) 38(19):3651–66. doi: 10.1038/s41388-019-0676-y
62. Duhamel S, Goyette MA, Thibault MP, Filion D, Gaboury L, Cote JF. The E3 Ubiquitin Ligase HectD1 Suppresses EMT and Metastasis by Targeting the +TIP ACF7 for Degradation. *Cell Rep* (2018) 22(4):1016–30. doi: 10.1016/j.celrep.2017.12.096
63. Peng Y, Dai H, Wang E, Lin CC, Mo W, Peng G, et al. TUSC4 Functions as a Tumor Suppressor by Regulating BRCA1 Stability. *Cancer Res* (2015) 75(2):378–86. doi: 10.1158/0008-5472.Can-14-2315
64. Xu Y, Ji K, Wu M, Hao B, Yao KT, Xu Y. A miRNA-HERC4 Pathway Promotes Breast Tumorigenesis by Inactivating Tumor Suppressor LATS1. *Protein Cell* (2019) 10(8):595–605. doi: 10.1007/s13238-019-0607-2
65. Xu YM, Wang HJ, Chen F, Guo WH, Wang YY, Li HY, et al. HRD1 Suppresses the Growth and Metastasis of Breast Cancer Cells by Promoting IGF-1R Degradation. *Oncotarget* (2015) 6(40):42854–67. doi: 10.18632/oncotarget.5733

66. Salah Z, Itzhaki E, Aqeilan RI. The Ubiquitin E3 Ligase ITCH Enhances Breast Tumor Progression by Inhibiting the Hippo Tumor Suppressor Pathway. *Oncotarget* (2014) 5(21):10886–900. doi: 10.18632/oncotarget.2540
67. Pefani DE, Pankova D, Abraham AG, Grawenda AM, Vlahov N, Scrace S, et al. TGF- β Targets the Hippo Pathway Scaffold RASSF1A to Facilitate YAP/SMAD2 Nuclear Translocation. *Mol Cell* (2016) 63(1):156–66. doi: 10.1016/j.molcel.2016.05.012
68. Chang L, Shen L, Zhou H, Gao J, Pan H, Zheng L, et al. ITCH Nuclear Translocation and H1.2 Polyubiquitination Negatively Regulate the DNA Damage Response. *Nucleic Acids Res* (2019) 47(2):824–42. doi: 10.1093/nar/gky1199
69. Tang H, Peng S, Dong Y, Yang X, Yang P, Yang L, et al. MARCH5 Overexpression Contributes to Tumor Growth and Metastasis and Associates With Poor Survival in Breast Cancer. *Cancer Manag Res* (2019) 11:201–15. doi: 10.2147/cmar.S190694
70. Gao C, Xiao G, Piersigilli A, Gou J, Ogunwobi O, Bargonetti J. Context-Dependent Roles of MDMX (MDM4) and MDM2 in Breast Cancer Proliferation and Circulating Tumor Cells. *Breast Cancer Res* (2019) 21(1):5. doi: 10.1186/s13058-018-1094-8
71. Yang JY, Zong CS, Xia W, Wei Y, Ali-Seyed M, Li Z, et al. MDM2 Promotes Cell Motility and Invasiveness by Regulating E-Cadherin Degradation. *Mol Cell Biol* (2006) 26(19):7269–82. doi: 10.1128/mcb.00172-06
72. Chou CC, Lee KH, Lai IL, Wang D, Mo X, Kulp SK, et al. AMPK Reverses the Mesenchymal Phenotype of Cancer Cells by Targeting the Akt-MDM2-Foxo3a Signaling Axis. *Cancer Res* (2014) 74(17):4783–95. doi: 10.1158/0008-5472.Can-14-0135
73. Xian J, Cheng Y, Qin X, Cao Y, Luo Y, Cao Y. Progress in the Research of P53 Tumour Suppressor Activity Controlled by Numb in Triple-Negative Breast Cancer. *J Cell Mol Med* (2020) 24(13):7451–9. doi: 10.1111/jcmm.15366
74. Hu Q, Li C, Wang S, Li Y, Wen B, Zhang Y, et al. LncRNAs-Directed PTEN Enzymatic Switch Governs Epithelial-Mesenchymal Transition. *Cell Res* (2019) 29(4):286–304. doi: 10.1038/s41422-018-0134-3
75. Yu JM, Sun W, Wang ZH, Liang X, Hua F, Li K, et al. TRIB3 Supports Breast Cancer Stemness by Suppressing FOXO1 Degradation and Enhancing SOX2 Transcription. *Nat Commun* (2019) 10(1):5720. doi: 10.1038/s41467-019-13700-6
76. Zhang L, Qin Y, Wu G, Wang J, Cao J, Wang Y, et al. PRRG4 Promotes Breast Cancer Metastasis Through the Recruitment of NEDD4 and Downregulation of Robo1. *Oncogene* (2020) 39(49):7196–208. doi: 10.1038/s41388-020-01494-7
77. Tsai CF, Cheng YK, Lu DY, Wang SL, Chang CN, Chang PC, et al. Inhibition of Estrogen Receptor Reduces Connexin 43 Expression in Breast Cancers. *Toxicol Appl Pharmacol* (2018) 338:182–90. doi: 10.1016/j.taap.2017.11.020
78. Hoover RG, Gullickson G, Kornbluth J. Natural Killer Lytic-Associated Molecule Plays a Role in Controlling Tumor Dissemination and Metastasis. *Front Immunol* (2012) 3:393. doi: 10.3389/fimmu.2012.00393
79. Zheng T, Lu M, Wang T, Zhang C, Du X. NRBE3 Promotes Metastasis of Breast Cancer by Down-Regulating E-Cadherin Expression. *Biochim Biophys Acta Mol Cell Res* (2018) 1865(12):1869–77. doi: 10.1016/j.jbbamcr.2018.09.003
80. Hatakeyama J, Wald JH, Rafidi H, Cuevas A, Sweeney C, Carraway KL 3rd. The ER Structural Protein Rtn4A Stabilizes and Enhances Signaling Through the Receptor Tyrosine Kinase ErbB3. *Sci Signal* (2016) 9(434):ra65. doi: 10.1126/scisignal.aaf1604
81. Liu J, Zhang C, Zhao Y, Yue X, Wu H, Huang S, et al. Parkin Targets HIF-1 α for Ubiquitination and Degradation to Inhibit Breast Tumor Progression. *Nat Commun* (2017) 8(1):1823. doi: 10.1038/s41467-017-01947-w
82. Lu YL, Yang X, Liu YK. Reduced PDZRN4 Promotes Breast Cancer Progression and Predicts Poor Prognosis. *Int J Clin Exp Pathol* (2019) 12(1):142–53.
83. Jia Z, Wang M, Li S, Li X, Bai XY, Xu Z, et al. U-Box Ubiquitin Ligase PPI2 Suppresses Breast Cancer Invasion and Metastasis by Altering Cell Morphology and Promoting SNAI1 Ubiquitination and Degradation. *Cell Death Dis* (2018) 9(2):63. doi: 10.1038/s41419-017-0094-4
84. Lee HJ, Li CF, Ruan D, Powers S, Thompson PA, Frohman MA, et al. The DNA Damage Transducer RNF8 Facilitates Cancer Chemoresistance and Progression Through Twist Activation. *Mol Cell* (2016) 63(6):1021–33. doi: 10.1016/j.molcel.2016.08.009
85. Kuang J, Li L, Guo L, Su Y, Wang Y, Xu Y, et al. RNF8 Promotes Epithelial-Mesenchymal Transition of Breast Cancer Cells. *J Exp Clin Cancer Res* (2016) 35(1):88. doi: 10.1186/s13046-016-0363-6
86. Tarcic O, Granit RZ, Pateras IS, Masury H, Maly B, Zwang Y, et al. RNF20 and Histone H2B Ubiquitylation Exert Opposing Effects in Basal-Like Versus Luminal Breast Cancer. *Cell Death Differ* (2017) 24(4):694–704. doi: 10.1038/cdd.2016.126
87. Shema E, Tirosh I, Aylon Y, Huang J, Ye C, Moskovits N, et al. The Histone H2B-Specific Ubiquitin Ligase RNF20/hBRE1 Acts as a Putative Tumor Suppressor Through Selective Regulation of Gene Expression. *Genes Dev* (2008) 22(19):2664–76. doi: 10.1101/gad.1703008
88. Yang YL, Zhang Y, Li DD, Zhang FL, Liu HY, Liao XH, et al. RNF144A Functions as a Tumor Suppressor in Breast Cancer Through Ubiquitin Ligase Activity-Dependent Regulation of Stability and Oncogenic Functions of HSPA2. *Cell Death Differ* (2020) 27(3):1105–18. doi: 10.1038/s41418-019-0400-z
89. Pang K, Park J, Ahn SG, Lee J, Park Y, Ooshima A, et al. RNF208, an Estrogen-Inducible E3 Ligase, Targets Soluble Vimentin to Suppress Metastasis in Triple-Negative Breast Cancers. *Nat Commun* (2019) 10(1):5805. doi: 10.1038/s41467-019-13852-5
90. Adam MG, Matt S, Christian S, Hess-Stumpp H, Haegerbarth A, Hofmann TG, et al. SIAH Ubiquitin Ligases Regulate Breast Cancer Cell Migration and Invasion Independent of the Oxygen Status. *Cell Cycle* (2015) 14(23):3734–47. doi: 10.1080/15384101.2015.1104441
91. Chan CH, Li CF, Yang WL, Gao Y, Lee SW, Feng Z, et al. The Skp2-SCF E3 Ligase Regulates Akt Ubiquitination, Glycolysis, Herceptin Sensitivity, and Tumorigenesis. *Cell* (2012) 149(5):1098–111. doi: 10.1016/j.cell.2012.02.065
92. Yan R, He L, Li Z, Han X, Liang J, Si W, et al. SCF(JFK) Is a Bona Fide E3 Ligase for ING4 and a Potent Promoter of the Angiogenesis and Metastasis of Breast Cancer. *Genes Dev* (2015) 29(6):672–85. doi: 10.1101/gad.254292.114
93. Zhang L, Zhou F, Li Y, Drabsch Y, Zhang J, van Dam H, et al. Fas-Associated Factor 1 Is a Scaffold Protein That Promotes β -Transducin Repeat-Containing Protein (β -TrCP)-Mediated β -Catenin Ubiquitination and Degradation. *J Biol Chem* (2012) 287(36):30701–10. doi: 10.1074/jbc.M112.353524
94. Plotnikov A, Varghese B, Tran TH, Liu C, Rui H, Fuchs SY. Impaired Turnover of Prolactin Receptor Contributes to Transformation of Human Breast Cells. *Cancer Res* (2009) 69(7):3165–72. doi: 10.1158/0008-5472.Can-08-4033
95. Wu Q, Li G, Wen C, Zeng T, Fan Y, Liu C, et al. Monoubiquitination of P120-Catenin Is Essential for Tgfb β -Induced Epithelial-Mesenchymal Transition and Tumor Metastasis. *Sci Adv* (2020) 6(4):eaay9819. doi: 10.1126/sciadv.aay9819
96. Yu L, Liu X, Cui K, Di Y, Xin L, Sun X, et al. SND1 Acts Downstream of TGF β 1 and Upstream of Smurf1 to Promote Breast Cancer Metastasis. *Cancer Res* (2015) 75(7):1275–86. doi: 10.1158/0008-5472.CAN-14-2387
97. Kwon A, Lee HL, Woo KM, Ryoo HM, Baek JH. SMURF1 Plays a Role in EGF-Induced Breast Cancer Cell Migration and Invasion. *Mol Cells* (2013) 36(6):548–55. doi: 10.1007/s10059-013-0233-4
98. Wang X, Jin C, Tang Y, Tang LY, Zhang YE. Ubiquitination of Tumor Necrosis Factor Receptor-Associated Factor 4 (TRAF4) by Smad Ubiquitination Regulatory Factor 1 (Smurf1) Regulates Motility of Breast Epithelial and Cancer Cells. *J Biol Chem* (2013) 288(30):21784–92. doi: 10.1074/jbc.M113.472704
99. Xie Y, Avello M, Schirle M, McWhinnie E, Feng Y, Bric-Furlong E, et al. Deubiquitinase FAM/USP9X Interacts With the E3 Ubiquitin Ligase SMURF1 Protein and Protects It From Ligase Activity-Dependent Self-Degradation. *J Biol Chem* (2013) 288(5):2976–85. doi: 10.1074/jbc.M112.430066
100. David D, Surendran A, Thulaseedharan JV, Nair AS. Regulation of CNKSR2 Protein Stability by the HECT E3 Ubiquitin Ligase Smurf2, and Its Role in Breast Cancer Progression. *BMC Cancer* (2018) 18(1):284. doi: 10.1186/s12885-018-4188-x
101. David D, Jagadeeshan S, Hariharan R, Nair AS, Pillai RM. Smurf2 E3 Ubiquitin Ligase Modulates Proliferation and Invasiveness of Breast

- Cancer Cells in a CNKSR2 Dependent Manner. *Cell Div* (2014) 9:2. doi: 10.1186/1747-1028-9-2
102. Zhang L, Zhou F, García de Vinuesa A, de Kruijff EM, Mesker WE, Hui L, et al. TRAF4 Promotes TGF- β Receptor Signaling and Drives Breast Cancer Metastasis. *Mol Cell* (2013) 51(5):559–72. doi: 10.1016/j.molcel.2013.07.014
 103. Jin C, Yang YA, Anver MR, Morris N, Wang X, Zhang YE. Smad Ubiquitination Regulatory Factor 2 Promotes Metastasis of Breast Cancer Cells by Enhancing Migration and Invasiveness. *Cancer Res* (2009) 69(3):735–40. doi: 10.1158/0008-5472.CAN-08-1463
 104. Fukunaga E, Inoue Y, Komiya S, Horiguchi K, Goto K, Saitoh M, et al. Smurf2 Induces Ubiquitin-Dependent Degradation of Smurf1 to Prevent Migration of Breast Cancer Cells. *J Biol Chem* (2008) 283(51):35660–7. doi: 10.1074/jbc.M710496200
 105. Li Z, Wang D, Lu J, Huang B, Wang Y, Dong M, et al. Methylation of EZH2 by PRMT1 Regulates Its Stability and Promotes Breast Cancer Metastasis. *Cell Death Differ* (2020) 27:3226–42. doi: 10.1038/s41418-020-00615-9
 106. Rezaeian AH, Li CF, Wu CY, Zhang X, Delacerda J, You MJ, et al. A Hypoxia-Responsive TRAF6-ATM-H2AX Signalling Axis Promotes HIF1 α Activation, Tumorigenesis and Metastasis. *Nat Cell Biol* (2017) 19(1):38–51. doi: 10.1038/ncb3445
 107. Tian Z, Tang J, Liao X, Gong Y, Yang Q, Wu Y, et al. TRIM8 Inhibits Breast Cancer Proliferation by Regulating Estrogen Signaling. *Am J Cancer Res* (2020) 10(10):3440–57. doi: 10.21203/rs.3.rs-42521/v1
 108. Tang J, Luo Y, Tian Z, Liao X, Cui Q, Yang Q, et al. TRIM11 Promotes Breast Cancer Cell Proliferation by Stabilizing Estrogen Receptor α . *Neoplasia* (2020) 22(9):343–51. doi: 10.1016/j.neo.2020.06.003
 109. Kawabata H, Azuma K, Ikeda K, Sugitani I, Kinowaki K, Fujii T, et al. TRIM44 Is a Poor Prognostic Factor for Breast Cancer Patients as a Modulator of NF- κ B Signaling. *Int J Mol Sci* (2017) 18(9):1931–46. doi: 10.3390/ijms18091931
 110. Wang Y, Liu C, Xie Z, Lu H. Knockdown of TRIM47 Inhibits Breast Cancer Tumorigenesis and Progression Through the Inactivation of PI3K/Akt Pathway. *Chem Biol Interact* (2020) 317:108960. doi: 10.1016/j.cbi.2020.108960
 111. Liao L, Song M, Li X, Tang L, Zhang T, Zhang L, et al. E3 Ubiquitin Ligase UBR5 Drives the Growth and Metastasis of Triple-Negative Breast Cancer. *Cancer Res* (2017) 77(8):2090–101. doi: 10.1158/0008-5472.CAN-16-2409
 112. Song M, Wang C, Wang H, Zhang T, Li J, Benezra R, et al. Targeting Ubiquitin Protein Ligase E3 Component N-Recognin 5 in Cancer Cells Induces a CD8+ T Cell Mediated Immune Response. *Oncoimmunology* (2020) 9(1):1746148. doi: 10.1080/2162402x.2020.1746148
 113. Adhikary S, Chakravarti D, Terranova C, Sengupta I, Maitituohti M, Dasgupta A, et al. Atypical Plant Homeodomain of UBR7 Functions as an H2BK120Ub Ligase and Breast Tumor Suppressor. *Nat Commun* (2019) 10(1):1398. doi: 10.1038/s41467-019-08986-5
 114. Subik K, Shu L, Wu C, Liang Q, Hicks D, Boyce B, et al. The Ubiquitin E3 Ligase WWP1 Decreases CXCL12-Mediated MDA231 Breast Cancer Cell Migration and Bone Metastasis. *Bone* (2012) 50(4):813–23. doi: 10.1016/j.bone.2011.12.022
 115. Neil JR, Tian M, Schiemann WP. X-Linked Inhibitor of Apoptosis Protein and Its E3 Ligase Activity Promote Transforming Growth Factor- β -Mediated Nuclear Factor- κ B Activation During Breast Cancer Progression. *J Biol Chem* (2009) 284(32):21209–17. doi: 10.1074/jbc.M109.018374
 116. Liu X, Ma F, Liu C, Zhu K, Li W, Xu Y, et al. UBE2O Promotes the Proliferation, EMT and Stemness Properties of Breast Cancer Cells Through the UBE2O/Ampk α 2/Mtorc1-MYC Positive Feedback Loop. *Cell Death Dis* (2020) 11(1):10. doi: 10.1038/s41419-019-2194-9
 117. Kang Y, Pantel K. Tumor Cell Dissemination: Emerging Biological Insights From Animal Models and Cancer Patients. *Cancer Cell* (2013) 23(5):573–81. doi: 10.1016/j.ccr.2013.04.017
 118. Kalluri R, Weinberg RA. The Basics of Epithelial-Mesenchymal Transition. *J Clin Invest* (2009) 119(6):1420–8. doi: 10.1172/JCI39104
 119. Wang Y, Zhou BP. Epithelial-Mesenchymal Transition in Breast Cancer Progression and Metastasis. *Chin J Cancer* (2011) 30(9):603–11. doi: 10.5732/cjc.011.10226
 120. Angelucci C, Maulucci G, Lama G, Proietti G, Colabianchi A, Papi M, et al. Epithelial-Stromal Interactions in Human Breast Cancer: Effects on Adhesion, Plasma Membrane Fluidity and Migration Speed and Directness. *PloS One* (2012) 7(12):e50804. doi: 10.1371/journal.pone.0050804
 121. Lu L, Zhou D, Jiang X, Song K, Li K, Ding W. Loss of E-Cadherin in Multidrug Resistant Breast Cancer Cell Line MCF-7/Adr: Possible Implication in the Enhanced Invasive Ability. *Eur Rev Med Pharmacol Sci* (2012) 16(9):1271–9.
 122. Galvan JA, Zlobec I, Wartenberg M, Lugli A, Gloor B, Perren A, et al. Expression of E-Cadherin Repressors SNAIL, ZEB1 and ZEB2 by Tumour and Stromal Cells Influences Tumour-Budding Phenotype and Suggests Heterogeneity of Stromal Cells in Pancreatic Cancer. *Br J Cancer* (2015) 112(12):1944–50. doi: 10.1038/bjc.2015.177
 123. Ahmed SF, Deb S, Paul I, Chatterjee A, Mandal T, Chatterjee U, et al. The Chaperone-Assisted E3 Ligase C Terminus of Hsc70-Interacting Protein (CHIP) Targets PTEN for Proteasomal Degradation. *J Biol Chem* (2012) 287(19):15996–6006. doi: 10.1074/jbc.M111.321083
 124. Wang X, Trotman LC, Koppie T, Alimonti A, Chen Z, Gao Z, et al. NEDD4-1 Is a Proto-Oncogenic Ubiquitin Ligase for PTEN. *Cell* (2007) 128(1):129–39. doi: 10.1016/j.cell.2006.11.039
 125. Bao B, Prasad AS. Targeting CSC in a Most Aggressive Subtype of Breast Cancer TNBC. *Adv Exp Med Biol* (2019) 1152:311–34. doi: 10.1007/978-3-030-20301-6_17
 126. Zhou X, Sun SC. Targeting Ubiquitin Signaling for Cancer Immunotherapy. *Signal Transduct Target Ther* (2021) 6(1):16. doi: 10.1038/s41392-020-00421-2
 127. Huntington ND, Cursons J, Rautela J. The Cancer-Natural Killer Cell Immunity Cycle. *Nat Rev Cancer* (2020) 20(8):437–54. doi: 10.1038/s41568-020-0272-z
 128. Sambhi M, Qorri B, Harless W, Szewczuk MR. Therapeutic Options for Metastatic Breast Cancer. *Adv Exp Med Biol* (2019) 1152:131–72. doi: 10.1007/978-3-030-20301-6_8
 129. Zheng N, Shabek N. Ubiquitin Ligases: Structure, Function, and Regulation. *Annu Rev Biochem* (2017) 86:129–57. doi: 10.1146/annurev-biochem-060815-014922
 130. Liu P, Verhaar AP, Peppelenbosch MP. Signaling Size: Ankyrin and SOCS Box-Containing ASB E3 Ligases in Action. *Trends Biochem Sci* (2019) 44(1):64–74. doi: 10.1016/j.tibs.2018.10.003
 131. Li C, Beaugregard-Lacroix E, Kondratiev C, Rousseau J, Heo AJ, Neas K, et al. UBR7 Functions With UBR5 in the Notch Signaling Pathway and Is Involved in a Neurodevelopmental Syndrome With Epilepsy, Ptosis, and Hypothyroidism. *Am J Hum Genet* (2021) 108(1):134–47. doi: 10.1016/j.ajhg.2020.11.018
 132. Munoz-Escobar J, Kozlov G, Gehring K. Crystal Structure of the UBR-Box From UBR6/FBXO11 Reveals Domain Swapping Mediated by Zinc Binding. *Protein Sci* (2017) 26(10):2092–7. doi: 10.1002/pro.3227
 133. Hormaechea-Agulla D, Kim Y, Song MS, Song SJ. New Insights Into the Role of E2s in the Pathogenesis of Diseases: Lessons Learned From UBE2O. *Mol Cells* (2018) 41(3):168–78. doi: 10.14348/molcells.2018.0008
 134. Henneberg LT, Schulman BA. Decoding the Messaging of the Ubiquitin System Using Chemical and Protein Probes. *Cell Chem Biol* (2021) 28(7):889–902. doi: 10.1016/j.chembiol.2021.03.009
 135. O'Connor HF, Swaim CD, Canadeo LA, Huibregtse JM. Ubiquitin-Activated Interaction Traps (UBAITs): Tools for Capturing Protein-Protein Interactions. *Methods Mol Biol* (2018) 1844:85–100. doi: 10.1007/978-1-4939-8706-1_7
 136. Bakos G, Yu L, Gak IA, Roumeliotis TI, Liakopoulos D, Choudhary JS, et al. An E2-Ubiquitin Thioester-Driven Approach to Identify Substrates Modified With Ubiquitin and Ubiquitin-Like Molecules. *Nat Commun* (2018) 9(1):4776. doi: 10.1038/s41467-018-07251-5
 137. Murakami A, Maekawa M, Kawai K, Nakayama J, Araki N, Semba K, et al. Cullin-3/KCTD10 E3 Complex Is Essential for Rac1 Activation Through RhoB Degradation in Human Epidermal Growth Factor Receptor 2-Positive Breast Cancer Cells. *Cancer Sci* (2019) 110(2):650–61. doi: 10.1111/cas.13899
 138. Maekawa M, Higashiyama S. KCTD10 Biology: An Adaptor for the Ubiquitin E3 Complex Meets Multiple Substrates: Emerging Divergent Roles of the Cullin-3/KCTD10 E3 Ubiquitin Ligase Complex in Various Cell Lines. *Bioessays* (2020) 42(8):e1900256. doi: 10.1002/bies.201900256
 139. Nishiyama K, Maekawa M, Nakagita T, Nakayama J, Kiyoi T, Chosei M, et al. CNKSR1 Serves as a Scaffold to Activate an EGFR Phosphatase via Exclusive Interaction With RhoB-GTP. *Life Sci Alliance* (2021) 4(9):1–22. doi: 10.26508/lsa.202101095

140. Qi SM, Dong J, Xu ZY, Cheng XD, Zhang WD, Qin JJ. PROTAC: An Effective Targeted Protein Degradation Strategy for Cancer Therapy. *Front Pharmacol* (2021) 12:692574. doi: 10.3389/fphar.2021.692574
141. Barghout SH. Targeted Protein Degradation: An Emerging Therapeutic Strategy in Cancer. *Anticancer Agents Med Chem* (2021) 21(2):214–30. doi: 10.2174/1871520620666200410082652
142. Yu DD, Wu Y, Shen HY, Lv MM, Chen WX, Zhang XH, et al. Exosomes in Development, Metastasis and Drug Resistance of Breast Cancer. *Cancer Sci* (2015) 106(8):959–64. doi: 10.1111/cas.12715
143. Kosaka N, Yoshioka Y, Tominaga N, Hagiwara K, Katsuda T, Ochiya T. Dark Side of the Exosome: The Role of the Exosome in Cancer Metastasis and Targeting the Exosome as a Strategy for Cancer Therapy. *Future Oncol* (2014) 10(4):671–81. doi: 10.2217/fon.13.222
144. Ahmed SF, Das N, Sarkar M, Chatterjee U, Chatterjee S, Ghosh MK. Exosome-Mediated Delivery of the Intrinsic C-Terminus Domain of PTEN Protects It From Proteasomal Degradation and Ablates Tumorigenesis. *Mol Ther* (2015) 23(2):255–69. doi: 10.1038/mt.2014.202

Conflict of Interest: The authors declare that the research was conducted in the absence of any commercial or financial relationships that could be construed as a potential conflict of interest.

Publisher's Note: All claims expressed in this article are solely those of the authors and do not necessarily represent those of their affiliated organizations, or those of the publisher, the editors and the reviewers. Any product that may be evaluated in this article, or claim that may be made by its manufacturer, is not guaranteed or endorsed by the publisher.

Copyright © 2021 Wang, Dai, Zeng, Guo and Lan. This is an open-access article distributed under the terms of the Creative Commons Attribution License (CC BY). The use, distribution or reproduction in other forums is permitted, provided the original author(s) and the copyright owner(s) are credited and that the original publication in this journal is cited, in accordance with accepted academic practice. No use, distribution or reproduction is permitted which does not comply with these terms.