

Cre/CysC ratio may predict muscle composition and is associated with glucose disposal ability and macrovascular disease in patients with type 2 diabetes

Qing Yang,¹ Mei Zhang,² Peng Sun,¹ Yanying Li,² Huichao Xu,¹ Kejun Wang,¹ Hongshan Shen,¹ Bo Ban,² Fupeng Liu ²

To cite: Yang Q, Zhang M, Sun P, *et al*. Cre/CysC ratio may predict muscle composition and is associated with glucose disposal ability and macrovascular disease in patients with type 2 diabetes. *BMJ Open Diab Res Care* 2021;**9**:e002430. doi:10.1136/bmjdr-2021-002430

► Additional supplemental material is published online only. To view, please visit the journal online (<http://dx.doi.org/10.1136/bmjdr-2021-002430>).

QY and MZ contributed equally.

Received 13 June 2021
Accepted 7 October 2021



© Author(s) (or their employer(s)) 2021. Re-use permitted under CC BY-NC. No commercial re-use. See rights and permissions. Published by BMJ.

¹Department of Nutrition, Affiliated Hospital of Jining Medical University, Jining, Shandong, China

²Department of Endocrinology, Affiliated Hospital of Jining Medical University, Jining, Shandong, China

Correspondence to
Dr Fupeng Liu;
liufupengsdu@126.com

ABSTRACT

Introduction Since the ratio of creatinine to cystatin C (Cre/CysC) can reflect muscle volume, it has been proven to be a predictor of sarcopenia in patients with or without diabetes. Here, we investigated the predictive value of Cre/CysC for the skeletal muscle composition and its correlations with glucose disposal ability and diabetic complications in patients with type 2 diabetes.

Research design and methods The skeletal muscle index (SMI) and mean skeletal muscle attenuation (MMA) values of 193 patients with type 2 diabetes were obtained through analyses of CT images at the lumbar 3 level.

Results Serum Cre/CysC was significantly correlated with both the SMI ($r=0.375$, $p<0.001$) and MMA ($r=0.378$, $p<0.001$). Multiple stepwise linear regression analysis demonstrated that Cre/CysC was the only biochemical predictor of the SMI ($\beta=0.48$ (95% CI 0.02 to 0.94)) and MMA ($\beta=0.57$ (95% CI 0.14 to 1.01)). Furthermore, the fat mass index (FMI) was significantly associated with the MMA ($r=-0.481$, $p<0.001$) but not the SMI ($r=0.101$, $p=0.164$). In the diabetic complications analysis, Cre/CysC was significantly lower in patients with cardiovascular disease (95% CI (-1.47 to -0.22), $p=0.008$) and lower extremity arterial disease (95% CI (-1.44 to -0.29), $p=0.004$). Moreover, in the 100 g steamed bun test, Cre/CysC was significantly correlated with glucose levels at 60 min ($r=-0.162$, $p=0.045$), 120 min ($r=-0.287$, $p<0.001$) and 180 min ($r=-0.313$, $p<0.001$).

Conclusions Cre/CysC may be a valuable predictor of skeletal muscle composition in type 2 diabetes. Patients with a higher Cre/CysC may have a better ability to dispose of postprandial glucose and are at a lower risk of macrovascular disease.

BACKGROUND

Type 2 diabetes mellitus is a group of metabolic disorders characterized by hyperglycemia due to impaired insulin secretion and increased insulin resistance.¹ In addition to common diabetic complications, vasculopathy and the accumulation of advanced glycation end-products can impair muscle mass and function, leading to sarcopenia.²

Significance of this study

What is already known about this subject?

► The ratio of creatinine to cystatin C (Cre/CysC) can reflect muscle mass and has been proven to be a predictor of sarcopenia. However, patients with type 2 diabetes mainly present reduced muscle performance and strength, which correlates with lower muscle density.

What are the new findings?

► Cre/CysC was an independent predictor of both muscle mass and muscle density in patients with type 2 diabetes.
► Cre/CysC was significantly lower in patients with cardiovascular disease and lower extremity arterial disease.
► Cre/CysC was negatively correlated with the level of postprandial glucose.

How might these results change the focus of research or clinical practice?

► This study suggests that patients with type 2 diabetes with higher Cre/CysC values may have better muscle compositions and abilities to dispose of postprandial glucose and lower risks of macrovascular disease.

A recent systematic review including 1832 patients with type 2 diabetes and 4694 euglycemic subjects demonstrated that patients with type 2 diabetes have a higher risk of sarcopenia (OR: 1.55 (95% CI 1.25 to 1.91)). Considering its heavy impact on quality of life and increased risk of fracture, disability and mortality, sarcopenia is emerging as a third category of diabetic complication.^{3,4}

Sarcopenia is defined as the presence of both low muscle mass and reduced muscle function (strength or performance).⁵ Several imaging modalities can be used to assess

muscle mass and achieve the diagnosis of sarcopenia.^{5 6} Among these methods, magnetic resonance and CT are considered gold standards for the non-invasive assessment of muscle mass.⁷ In addition to muscle volume, CT can also assess muscle density because increased fat infiltration into muscle results in lower CT attenuation; in other words, higher CT attenuation indicates higher muscle density.⁸ However, in addition to the high cost, the equipment is not immediately accessible in primary care, and radiological technicians are required to operate it.

The ratio of creatinine to cystatin C (Cre/CysC) was first reported as a surrogate marker of muscle mass in 2013.⁹ On this basis, Cre/CysC has been proven to be an accurate and inexpensive predictor of sarcopenia in patients with chronic obstructive pulmonary disease, non-dialysis chronic kidney disease and diabetes.^{10–12} However, unlike other diseases, patients with type 2 diabetes mainly present reduced muscle performance and strength, which correlate with muscle density, but have no difference in muscle mass.^{13 14} A recent study showed that individuals with lower CT attenuation are associated with a higher risk of incident diabetes mellitus.¹⁵ Additionally, the muscles of obese subjects with diabetes mellitus show significantly lower CT attenuation than those of obese subjects with normal glucose tolerance.¹⁶ These studies indicated that muscle density plays an important role in the occurrence and development of diabetes. In the present study, we hypothesize that in addition to muscle mass, the Cre/CysC ratio can predict muscle density in patients with type 2 diabetes. Both muscle mass and muscle density were evaluated by CT scans. Considering that skeletal muscle is the main consumer of glucose as well as the association between sarcopenia and diabetic complications, we also evaluated

the correlation of Cre/CysC with glucose disposal ability and diabetic complications.

METHODS

Study patients

Type 2 diabetes patients hospitalized in the Department of Endocrinology, Affiliated Hospital of Jining Medical University, between January 2017 and December 2020 who underwent CT scans including the center plane of the third lumbar vertebra on axial images and had blood analyses determining creatinine and cystatin C levels were included in this study. The exclusion criteria were as follows: (1) patients missing anthropometric measures such as height and weight; (2) patients with malignant tumours, abnormal thyroid function, or stage V diabetic nephropathy; and (3) patients who were receiving hemodialysis or immunosuppressive drugs. Due to the retrospective nature of the study and the anonymity of the data, the requirement for informed consent was waived.

Laboratory measurements and complications assessment

All biochemical and immune indexes were measured at our hospital laboratory. Creatinine (mg/dL) was measured by the sarcosine oxidase method (Diacogene, Sichuan, China), and cystatin C was measured with a particle-enhanced turbidimetric assay (Zybio, Chongqing, China). The Cre/CysC ratio was calculated by dividing serum creatinine (mg/L) by serum cystatin C (mg/L). Patients underwent a 100 g steamed bun test, which is generally used as a simulation test to observe postprandial changes in blood glucose, islet function, and other biochemical indicators^{17 18} when they had good glucose control after intensive insulin therapy. Diabetic complications were assessed systematically according to the guidelines for the prevention and control of type 2 diabetes in China.^{19 20} The method of the 100 g steamed bun test and the diagnostic criteria for diabetic complications are shown in the online supplemental material.

Body composition measurements

Two authors identified axial CT images at the L3 level in which the spinous process and the two transverse processes could be visualized. Image analysis included the skeletal muscle index (SMI), mean skeletal muscle attenuation (MMA) and fat mass index (FMI). Slice-O-Matic software (V.5.0, TomoVision, Montreal, Quebec, Canada) was used for image analysis by setting attenuation thresholds from -29 to 150 Hounsfield units (HU) for skeletal muscle, -150 to -30 HU for visceral adipose tissue and -190 to -30 HU for intramuscular/subcutaneous adipose tissue.²¹ Each type of tissue found in each L3 CT image was then shaded with a different colour, corresponding to these thresholds. Data outputs for the area in cm^2 and the CT attenuation of each tissue type in each CT image were collected and used to calculate the SMI, MMA and FMI. The SMI, reflecting muscle mass, was calculated by normalizing the L3 cross-sectional skeletal muscle area in cm^2 by height in m^2 .^{21 22} The MMA,

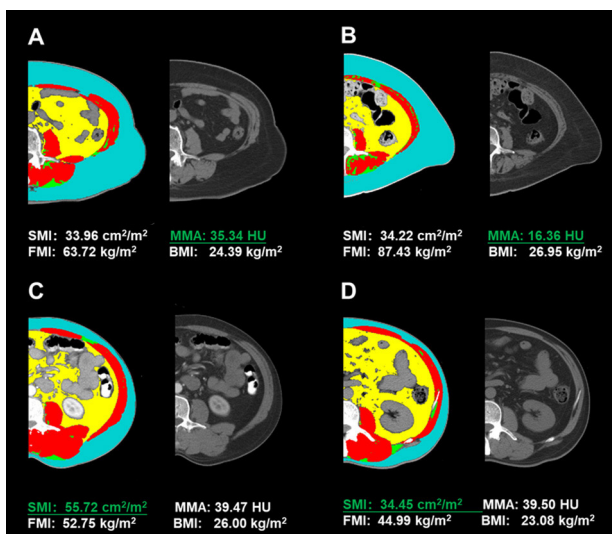


Figure 1 CT image analysis at the lumbar 3 level using Slice-O-Matic software. Red: muscle; blue: subcutaneous adipose tissue; yellow: visceral adipose tissue; green: intermuscular adipose tissue; grey: unprocessed CT image. BMI, body mass index; FMI, fat mass index; MMA, mean skeletal muscle attenuation; SMI, skeletal muscle index.

reflecting muscle density, was shown as the CT attenuation of L3 cross-sectional skeletal muscle in HU and automatically calculated by the software.²² The FMI was first proposed by VanItallie *et al* as an indicator of nutritional status and calculated by normalizing fat mass in kg by height in m².^{21 23 24}

Statistical analysis

Continuous variables are summarized using the median and IQR if not normally distributed and the mean±SD if normally distributed. Categorical variables are summarized as the frequency count and per cent. These variables between the two groups were compared by an independent samples t-test or the Mann-Whitney U test. Categorical variables were analyzed by the χ^2 test. Univariable correlations between variables were assessed by Pearson's

correlation coefficients. Multiple stepwise linear regression analysis was used to identify independent factors. Statistical analysis was performed using SPSS software (V.26.0). A p value less than 0.05 was considered statistically significant.

RESULTS

A total of 254 diabetic patients with axial CT images at the L3 level were found in the hospital management system. After screening the discharge diagnosis, patient state and biochemical information, 193 type 2 diabetes patients were included in the present study (see online supplemental figure 1). The SMI and MMA evaluated skeletal composition from different angles. Patients with similar muscle masses may have different muscle

Table 1 Characteristics of patients included in this study

Characteristic	Total (n=193)	Male (n=114)	Female (n=79)	P value
Age (years)	55.45±11.73	53.25±12.29	58.62±10.13	0.002
Duration (months)	84(24,132)	72(12,123)	96(36,144)	0.091
BMI (kg/m ²)	26.08±3.42	26.66±3.07	25.25±3.73	0.005
WHR	0.94±0.06	0.95±0.05	0.92±0.06	0.001
Creatinine (mg/L)	6.76±1.91	7.53±1.78	5.65±1.50	<0.01
Cystatin C (mg/L)	0.98±0.33	1.01±0.34	0.93±0.31	0.129
Cre/CysC	7.26±2.06	7.86±2.07	6.38±1.71	<0.01
Albumin (g/L)	42.53±4.62	42.97±4.41	41.90±4.87	0.115
BUN (mmol/L)	5.47±1.52	5.60±1.55	5.30±1.47	0.177
TG (mmol/L)	1.45 (0.98,2.12)	1.52 (1.16,2.27)	1.23 (0.83,1.84)	0.004
TCH (mmol/L)	4.54±1.15	4.36±1.14	4.80±1.13	0.009
HDL (mmol/L)	1.11±0.29	1.03±0.25	1.22±0.31	<0.001
LDL (mmol/L)	2.63±0.86	2.47±0.82	2.86±0.87	0.002
HbA1c (%)	8.65±1.90	8.51±1.89	8.85±1.92	0.231
FBG (mmol/L)	7.24±2.28	6.91±1.95	7.72±2.63	0.021
FCP (ng/mL)	2.22±0.94	2.36±0.89	2.02±0.97	0.02
HOMA2 %B	79.29±44.05	87.89±44.76	66.96±40.20	0.002
HOMA2 %S	66.35±34.08	62.20±29.53	72.30±39.17	0.059
HOMA2 IR	1.83±0.82	1.89±0.77	1.74±0.88	0.248
Hypertension (%)	89 (46.11)	54 (47.37)	35 (44.30)	0.675
CV disease (%)	59 (30.57)	29 (25.44)	30 (37.97)	0.063
DPN (%)	147 (76.17)	87 (76.32)	60 (75.95)	0.953
LEAD (%)	109 (56.48)	63 (55.26)	46 (58.23)	0.683
DN (%)	82 (42.49)	47 (41.23)	35 (44.30)	0.671
DR (%)	44 (22.80)	23 (20.18)	21 (26.58)	0.297
SMI (cm ² /m ²)	47.80±8.71	52.59±6.81	40.87±6.11	<0.001
MMA (HU)	37.11±6.82	39.14±5.95	34.17±6.96	<0.001
FMI (kg/m ²)	8.63±1.82	8.36±1.72	9.01±1.89	0.014

BMI, body mass index; BUN, blood urea nitrogen; Cre/CysC, creatinine-to-cystatin C ratio; CV, cardiovascular; DN, diabetic nephropathy; DPN, diabetic peripheral neuropathy; DR, diabetic retinopathy; FBG, fasting blood glucose; FCP, fasting C peptide; FMI, fat mass index; HbA1c, hemoglobin A1C; HDL, high-density lipoproteins; HOMA2, homeostasis model assessment; IR, Insulin resistance; LDL, low-density lipoproteins; LEAD, lower extremity arterial disease; MMA, mean skeletal muscle attenuation; SMI, skeletal muscle index; TCH, total cholesterol; TG, triglycerides; WHR, waist-hip ratio.

Table 2 Multiple stepwise linear regression analysis of factors associated with the SMI and MMA

Variable	Beta (95% CI)	P value
SMI		
Male	9.06 (7.18 to 10.95)	<0.001
BMI	1.00 (0.75 to 1.26)	<0.001
Age	-0.10 (-0.18 to 0.02)	0.012
Cre/CysC	0.48 (0.02 to 0.94)	0.042
MMA		
Male	3.68 (1.89 to 5.47)	<0.001
BMI	-0.48 (-0.72 to 0.24)	<0.001
Age	-0.21 (-0.28 to 0.13)	<0.001
Cre/CysC	0.57 (0.14 to 1.01)	0.011

Adopted factors: sex, age, BMI, WHR, Cre/CysC, creatinine, albumin, high-density lipoproteins, HOMA2 %B, HOMA2 %S, fasting blood glucose and fasting C peptide for the SMI; sex, age, duration, BMI, WHR, Cre/CysC, cystatin C, albumin, triglycerides, high-density lipoproteins, low-density lipoproteins, hypertension, cardiovascular disease and diabetic nephropathy for the MMA. $R^2=0.788$ for the SMI and 0.612 for the MMA. BMI, body mass index; Cre/CysC, creatinine-to-cystatin C ratio; HOMA2, homeostasis model assessment; MMA, mean skeletal muscle attenuation; SMI, skeletal muscle index; WHR, waist-hip ratio.

densities. As shown in [figure 1](#), patient A had a similar SMI to patient B but a much higher MMA. In addition, patients with similar muscle densities may have different muscle masses. As shown in the same figure, patient C had a similar MMA to patient D but a much higher SMI.

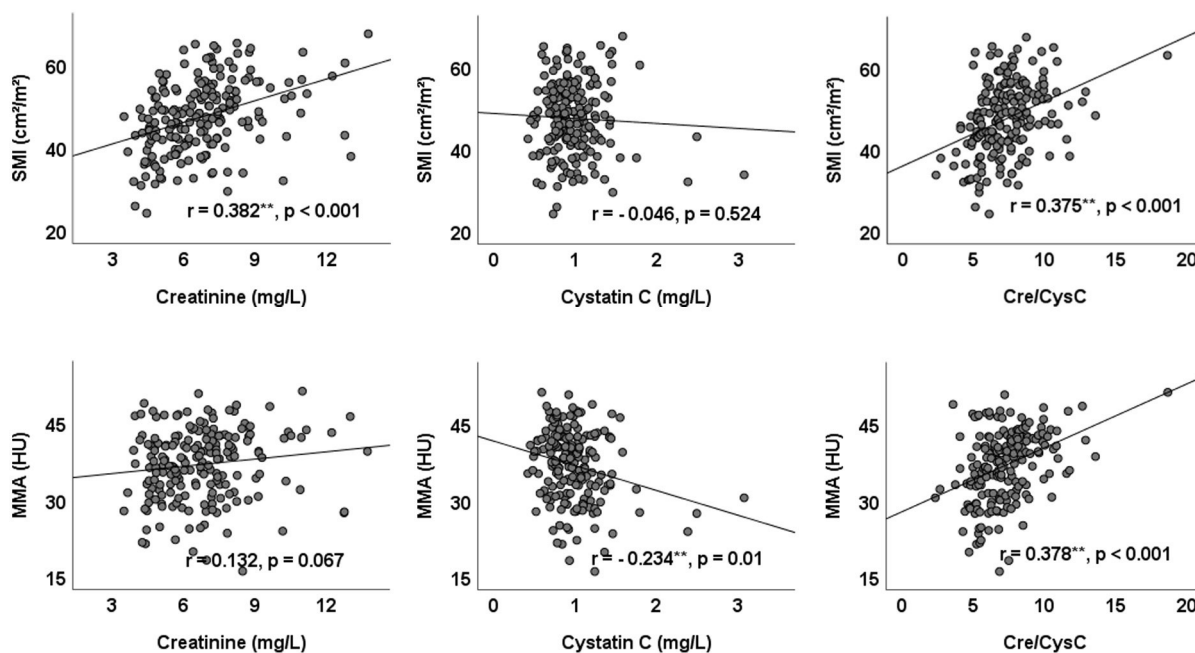


Figure 2 Scatter diagram of creatinine and cystatin C and their ratio Cre/CysC with the SMI and MMA. Cre/CysC, creatinine to cystatin C ratio; SMI, skeletal muscle index; MMA, mean skeletal muscle attenuation.

Patient characteristics

The patient characteristics are presented in [table 1](#). A total of 114 male patients and 79 female patients with a mean age of 55.45 years were enrolled in this study. Male patients had higher serum creatinine levels, Cre/CysC ratios, and SMI and MMA values than female patients.

Correlations of the SMI and MMA with clinical factors

The correlations between the SMI and MMA and clinical factors are shown in online supplemental table 1. Both the SMI and MMA were significantly associated with the Cre/CysC ratio (SMI: $r=0.375$, $p<0.001$; MMA: $r=0.378$, $p<0.001$). Serum creatinine was associated with the SMI ($r=0.382$, $p<0.001$) but was not associated with the MMA ($r=0.132$, $p=0.067$). Serum cystatin was not associated with the SMI ($r=-0.046$, $p=0.524$) but was associated with MMA ($r=-0.234$, $p=0.010$). The scatter diagram of serum creatinine and cystatin C and their ratio with the SMI and MMA are shown in [figure 2](#). Notably, the BMI and waist-hip ratio (WHR) were positively correlated with the SMI (BMI: $r=0.505$, $p<0.001$; WHR: $r=0.286$, $p<0.001$) but negatively correlated with the MMA (BMI: $r=-0.178$, $p=0.013$; WHR: $r=-0.149$, $p=0.045$). Furthermore, the FMI was significantly associated with the MMA ($r=-0.481$, $p<0.001$) but not with the SMI ($r=0.101$, $p=0.164$). Multiple stepwise linear regression analyses of variables related to the SMI and MMA are listed in [table 2](#). After adjusting for confounding factors, Cre/CysC was the only biochemical predictor of the SMI ($\beta=0.48$, (95% CI 0.02 to 0.94)) and MMA ($\beta=0.57$ (95% CI 0.14 to 1.01)).

Since sex has a significant impact on the SMI and MMA, subgroup analyses were performed in the correlation (online supplemental table 1) and multiple stepwise

Table 3 Correlation of Cre/CysC with diabetic complications, glucose and C peptide

Complications	CV disease	DPN	LEAD	DN	DR
95% CI	-1.47 to -0.22	-1.06 to 0.31	-1.44 to -0.29	-0.73 to 0.45	-1.24 to 0.15
P value	0.008	0.283	0.004	0.639	0.123
Glucose	0 min	30 min	60 min	120 min	180 min
r	-0.121	-0.146	-0.162	-0.287	-0.313
P value	0.109	0.071	0.045	<0.001	<0.001
C peptide	0 min	30 min	60 min	120 min	180 min
r	-0.006	-0.004	0.046	0.106	0.086
P value	0.942	0.959	0.575	0.191	0.287

Correlations are shown with the coefficient *r* or 95% CI of the mean difference between the patients with complications and without. Cre/CysC, creatinine to cystatin C ratio; CV, cardiovascular; DN, diabetic nephropathy; DPN, diabetic peripheral neuropathy; DR, diabetic retinopathy; LEAD, lower-extremity arterial disease.

linear regression (online supplemental table 2) analyses. The Cre/CysC ratio was significantly associated with both the SMI and MMA in males (SMI: $r=0.234$, $p=0.012$; MMA: $r=0.337$, $p<0.001$) and only significantly associated with the MMA in females ($r=0.223$, $p=0.048$). In the multiple stepwise linear regression analyses, Cre/CysC was an independent predictor of the MMA in males ($\beta=0.60$ (95% CI 0.11 to 1.09)).

Correlation of Cre/CysC with diabetic complications, glucose and C peptide

Considering the predictive value of Cre/CysC in muscle composition, its correlation with diabetic complications, glucose and C peptide was further evaluated. The details are listed in table 3. In the diabetic complications analysis, Cre/CysC was significantly lower in patients with cardiovascular disease (95% CI (-1.47 to -0.22), $p=0.008$) and lower extremity arterial disease (95% CI (-1.44 to -0.29), $p=0.004$). Moreover, in the 100 g steamed bun test, Cre/CysC was significantly correlated with glucose levels at 60 min ($r=-0.162$, $p=0.045$), 120 min ($r=-0.287$, $p<0.001$) and 180 min ($r=-0.313$, $p<0.001$). Multiple stepwise linear regression analyses of diabetic complications and glucose were further performed (the details are listed in online supplemental table 3). After adjusting for confounding factors, Cre/CysC was an independent predictor of the glucose level at 120 min ($\beta=-0.23$ (95% CI -0.41 to -0.05)) and 180 min ($\beta=-0.31$ (95% CI -0.51 to -0.11)).

DISCUSSION

Creatinine originates from skeletal muscle and is affected by renal function, while cystatin C, which is another serum marker of renal function, is a cysteine proteinase inhibitor that functions as a housekeeping protein excreted by all nucleated cells.²⁵⁻²⁷ Therefore, the ratio of Cre/CysC corrected for renal function can reflect the total muscle volume in the body. However, muscle function, another key diagnostic element of sarcopenia, is correlated with muscle density rather than muscle size. Moreover, patients with diabetes mainly present with

reduced muscle performance and strength. To date, no study has evaluated the predictive value of Cre/CysC for muscle density.

This study first reported that Cre/CysC is an independent predictor of both the SMI and MMA. The predictive function of Cre/CysC for the MMA may be one of the main principles of Cre/CysC predicting sarcopenia in patients with type 2 diabetes. This result is also consistent with a previous study showing that Cre/CysC predicts muscle strength in patients with non-dialysis requiring chronic kidney disease.¹² Moreover, both the SMI and MMA are independent predictors of the outcome in critically ill patients.²² Therefore, Cre/CysC has also been proven to be a predictor of outcomes in patients treated in the ICU.^{28 29} Based on the above evidence, Cre/CysC could be regarded as a more comprehensive indicator of skeletal muscle composition and thereby predict sarcopenia, muscle strength and the outcome of patients with critical illness.

In the subgroup analysis, Cre/CysC ratio was not significantly associated with SMI in females and was not an independent predictor for SMI in males and SMI and MMA in females. However, a tendency of positive correlation between Cre/CysC and SMI emerged in females in spite of without significance. The predicting abilities of Cre/CysC in different genders may be also concealed by the small patients' number, especially in females. Therefore, large sample studies are required to further clarify the predictive value of Cre/CysC for muscle composition in different genders.

In addition to Cre/CysC, anthropometric characteristics, including sex, age and BMI, are independent predictors of the SMI and MMA. It is easy to understand that SMI and MMA values are higher in male patients than in female patients and decrease gradually with increasing age. Since overnutrition and lack of physical exercise are major inducers of type two diabetes, obesity, dyslipidemia and abnormal fat distribution are common comorbidities in these patients. This study indicated that BMI and WHR are positively correlated with the SMI but negatively correlated with MMA. Moreover, the FMI was negatively

correlated with the MMA, even on controlling for the factor of age ($r=-0.428$, $p<0.01$). These results further demonstrated the adverse impact of obesity and fat tissue infiltration on muscle density.

Considering that skeletal muscle is the main consumer of glucose and the main target of insulin activity,³⁰ this study further evaluated the correlation between Cre/CysC and the 100 g steamed bun test results. Our research showed that Cre/CysC is negatively correlated with postprandial blood glucose but has no correlation with C peptide release. Multiple stepwise linear regression analyses further demonstrated that Cre/CysC was an independent predictor of glucose at 120 min and 180 min. Interestingly, unlike the SMI, Cre/CysC did not show a correlation with homeostasis model assessment (HOMA2) indexes. The possible reason is that Cre/CysC is a comprehensive marker reflecting the SMI but also the MMA. Moreover, both creatinine and cystatin C showed correlations with these indexes in the same direction (positive or negative); therefore, the association of their ratio with HOMA2 indexes was partially counteracted. Nevertheless, these results indicate that patients with high levels of Cre/CysC may have better postprandial glucose disposal abilities, even though they showed no differences in pancreatic function and insulin sensitivity. The present study did not show a correlation between Cre/CysC and hemoglobin A1c (HbA1c), which is consistent with previous epidemiological studies showing that HbA1c is not associated with sarcopenia in individuals with type 2 diabetes.³ However, a relationship between glucose control and sarcopenia cannot be completely excluded. Our study indicates that postprandial glucose disposal ability may decrease in type 2 diabetes patients with sarcopenia.

There are some indications that low muscle mass and reduced function could be associated with diabetic complications.³ The present study has shown that Cre/CysC is negatively correlated with macrovascular diseases, including cardiovascular disease and lower extremity arterial disease, and this might be attributed to the impact of cystatin C. This study also showed that cystatin C is positively correlated with cardiovascular disease and lower extremity arterial disease ($r=0.211$, $p=0.003$ and $r=0.164$, $p=0.023$, respectively; data not shown). This is consistent with previous clinical studies indicating that cystatin C is positively associated with heart and peripheral arterial disease.^{31–35} Studies have also indicated that cystatin C increases in human obesity and is positively associated with body fat mass.^{36–38} However, in mechanistic studies, cystatin C was severely reduced in atherosclerotic lesions, and the absence of cystatin C resulted in larger plaque areas and increased obesity-associated adipose tissue inflammation and dysfunction.^{39–41} Therefore, cystatin C appears to be a protective factor that is stimulated to slow the progression of atherosclerosis and fat infiltration.

In adults, the normal range of cystatin C is 0.51–0.98 mg/L, which is independent of sex and age.⁴² The normal range of creatinine for males is 0.6–1.2 mg/dL, and for females, it is 0.5–1.1 mg/dL.⁴³ Therefore, the ratio of Cre/CysC should be near 10. Some studies provided Cre/

CysC values near 1 or 100 because they calculated the Cre/CysC ratio with different formulas, including $\text{Cre/CysC ratio} = [(\text{serum creatinine } \{\text{mg/dl}\} / \text{serum cystatin C } \{\text{mg/l}\}) \times 100]$ or $(\text{serum creatinine } \{\text{mg/dl}\} / \text{serum cystatin C } \{\text{mg/l}\})$.^{10–12 44–46} With more attention given to the ratio of Cre/CysC, a recognized and accepted formula should be proposed by an official institute.

Our study has some limitations. First, the Cre/CysC should be regarded as a supplementary indicator in predicting SMI and MMA because of the relative small coefficient r values and wide CIs. Second, the predicting abilities of Cre/CysC for muscle compositions in different genders need further clarification. Third, we did not assess muscle function (eg, handgrip strength and gait speed), which has recently been advised by the European Working Group on Sarcopenia in Older People as one of the referred criteria for severe sarcopenia.¹⁴ Fourth, as this was a retrospective study, we did not repeatedly assess the muscle composition and Cre/CysC; therefore, the predictive value of changes in Cre/CysC for muscle composition over time is unknown. Finally, this is a single-center study with a small sample population and large sample studies are needed to validate the findings in the present study and to verify the prognostic value of Cre/CysC for diabetic complications.

CONCLUSIONS

In conclusion, the present study indicated that the ratio of Cre/CysC may be a valuable predictor of skeletal muscle composition in type 2 diabetes. Additionally, patients with a higher Cre/CysC may have a better ability to dispose of postprandial glucose and are at a lower risk of macrovascular disease.

Contributors The manuscript was conceived by QY and FL, with manuscript questions and analytic plan designed by QY, MZ, BB and FL. FL wrote the manuscript, interpreted the data, critically reviewed and revised the manuscript. QY, MZ and BB contributed to writing, data analysis, data interpretation, critical review and revision. PS, YL, HX, KW and HS contributed to data interpretation, critical review and revision. All authors had access to the data and all authors agreed to submit the final manuscript. FL was supported by the doctoral founding. QY and FL are the guarantors of this work and as such had full access to all the data in the study and take responsibility for the integrity of the data and the accuracy of the data analysis.

Funding The study was supported by the Doctoral Foundation of the Affiliated Hospital of Jining Medical University (2020-BS-008).

Competing interests None declared.

Patient consent for publication Not applicable.

Ethics approval This study was approved by the Ethics Committee of the Affiliated Hospital of Jining Medical University (No. 2021C041).

Provenance and peer review Not commissioned; externally peer reviewed.

Data availability statement Data sharing not applicable as no datasets generated and/or analyzed for this study. The datasets generated and analysed during the current study are not publicly available but are available from the corresponding author on reasonable request.

Supplemental material This content has been supplied by the author(s). It has not been vetted by BMJ Publishing Group Limited (BMJ) and may not have been peer-reviewed. Any opinions or recommendations discussed are solely those of the author(s) and are not endorsed by BMJ. BMJ disclaims all liability and responsibility arising from any reliance placed on the content. Where the content

includes any translated material, BMJ does not warrant the accuracy and reliability of the translations (including but not limited to local regulations, clinical guidelines, terminology, drug names and drug dosages), and is not responsible for any error and/or omissions arising from translation and adaptation or otherwise.

Open access This is an open access article distributed in accordance with the Creative Commons Attribution Non Commercial (CC BY-NC 4.0) license, which permits others to distribute, remix, adapt, build upon this work non-commercially, and license their derivative works on different terms, provided the original work is properly cited, appropriate credit is given, any changes made indicated, and the use is non-commercial. See: <http://creativecommons.org/licenses/by-nc/4.0/>.

ORCID iD

Fupeng Liu <http://orcid.org/0000-0003-3916-5833>

REFERENCES

- American Diabetes Association. Classification and diagnosis of diabetes: standards of medical care in diabetes-2019. *Diabetes Care* 2019;42:S13–28.
- Chiu C-Y, Yang R-S, Sheu M-L, et al. Advanced glycation end-products induce skeletal muscle atrophy and dysfunction in diabetic mice via a RAGE-mediated, AMPK-down-regulated, Akt pathway. *J Pathol* 2016;238:470–82.
- Izzo A, Massimino E, Riccardi G, et al. A narrative review on sarcopenia in type 2 diabetes mellitus: prevalence and associated factors. *Nutrients* 2021;13 doi:10.3390/nu13010183
- Mesinovic J, Zengin A, De Courten B, et al. Sarcopenia and type 2 diabetes mellitus: a bidirectional relationship. *Diabetes Metab Syndr Obes* 2019;12:1057–72.
- Cruz-Jentoft AJ, Bahat G, Bauer J, et al. Sarcopenia: revised European consensus on definition and diagnosis. *Age Ageing* 2019;48:16–31.
- Albano D, Messina C, Vitale J, et al. Imaging of sarcopenia: old evidence and new insights. *Eur Radiol* 2020;30:2199–208.
- Beaudart C, McCloskey E, Bruyère O, et al. Sarcopenia in daily practice: assessment and management. *BMC Geriatr* 2016;16:170.
- Lenchik L, Boutin RD. Sarcopenia: beyond muscle atrophy and into the new frontiers of opportunistic imaging, precision medicine, and machine learning. *Semin Musculoskelet Radiol* 2018;22:307–22.
- Tetsuka S, Morita M, Ikeguchi K, et al. Creatinine/cystatin C ratio as a surrogate marker of residual muscle mass in amyotrophic lateral sclerosis. *Neurol Clin Neurosci* 2013;1:32–7.
- Osaka T, Hamaguchi M, Hashimoto Y, et al. Decreased the creatinine to cystatin C ratio is a surrogate marker of sarcopenia in patients with type 2 diabetes. *Diabetes Res Clin Pract* 2018;139:52–8.
- Hirai K, Tanaka A, Homma T, et al. Serum creatinine/cystatin C ratio as a surrogate marker for sarcopenia in patients with chronic obstructive pulmonary disease. *Clin Nutr* 2021;40:1274–80.
- Lin Y-L, Chen S-Y, Lai Y-H, et al. Serum creatinine to cystatin C ratio predicts skeletal muscle mass and strength in patients with non-dialysis chronic kidney disease. *Clin Nutr* 2020;39:2435–41.
- Anagnostis P, Gkekakos NK, Achilla C, et al. Type 2 diabetes mellitus is associated with increased risk of sarcopenia: a systematic review and meta-analysis. *Calcif Tissue Int* 2020;107:453–63.
- Zhou M, Wang H, Chen J, et al. Epicardial adipose tissue and atrial fibrillation: possible mechanisms, potential therapies, and future directions. *Pacing Clin Electrophysiol* 2020;43:133–45.
- Tanaka M, Okada H, Hashimoto Y, et al. Low-attenuation muscle is a predictor of diabetes mellitus: a population-based cohort study. *Nutrition* 2020;74:110752.
- Malenfant P, Joanisse DR, Thériault R, et al. Fat content in individual muscle fibers of lean and obese subjects. *Int J Obes Relat Metab Disord* 2001;25:1316–21.
- Fang C, Wang X, Wu W, et al. Association of serum magnesium level with odds of prediabetes and diabetes in a southern Chinese population: a prospective nested case-control study. *Biol Trace Elem Res* 2016;172:307–14.
- Su H, Wang Y, Ma X, et al. Comparative agreement analysis of differences in 1,5-Anhydroglucitol, glycated albumin, and glycated hemoglobin A1c levels between fasting and postprandial states in steamed bread meal test. *Int J Endocrinol* 2017;2017:5917293
- Chinese medical association diabetes association. Guidelines for the prevention and control of type 2 diabetes in China. *Chin J Endocrinol Metab* 2015;30:893–942.
- Weng J, Ji L, Jia W, et al. Standards of care for type 2 diabetes in China. *Diabetes Metab Res Rev* 2016;32:442–58.
- Albersheim J, Sathianathan NJ, Zabell J, et al. Skeletal muscle and fat mass indexes predict discharge disposition after radical cystectomy. *J Urol* 2019;202:1143–9.
- Loosen SH, Schulze-Hagen M, Püngel T, et al. Skeletal muscle composition predicts outcome in critically ill patients. *Crit Care Explor* 2020;2:e0171.
- Van'tallie TB, Yang MU, Heymsfield SB, et al. Height-normalized indices of the body's fat-free mass and fat mass: potentially useful indicators of nutritional status. *Am J Clin Nutr* 1990;52:953–9.
- Mourtzakis M, Prado CMM, Lieffers JR, et al. A practical and precise approach to quantification of body composition in cancer patients using computed tomography images acquired during routine care. *Appl Physiol Nutr Metab* 2008;33:997–1006.
- Abrahamson M, Olafsson I, Palsdottir A, et al. Structure and expression of the human cystatin C gene. *Biochem J* 1990;268:287–94.
- Levey AS, Perrone RD, Madias NE. Serum creatinine and renal function. *Annu Rev Med* 1988;39:465–90.
- Viollet L, Gailey S, Thornton DJ, et al. Utility of cystatin C to monitor renal function in Duchenne muscular dystrophy. *Muscle Nerve* 2009;40:438–42.
- Kashani KB, Frazee EN, Kukrálová L, et al. Evaluating muscle mass by using markers of kidney function: development of the sarcopenia index. *Crit Care Med* 2017;45:e23–9.
- Barreto EF, Poyant JO, Coville HH, et al. Validation of the sarcopenia index to assess muscle mass in the critically ill: a novel application of kidney function markers. *Clin Nutr* 2019;38:1362–7.
- DeFronzo RA. Lilly lecture 1987. The triumvirate: beta-cell, muscle, liver. A collusion responsible for NIDDM. *Diabetes* 1988;37:667–87.
- Huh JH, Choi E, Lim JS, et al. Serum cystatin C levels are associated with asymptomatic peripheral arterial disease in type 2 diabetes mellitus patients without overt nephropathy. *Diabetes Res Clin Pract* 2015;108:258–64.
- Kaneko R, Sawada S, Tokita A, et al. Serum cystatin C level is associated with carotid arterial wall elasticity in subjects with type 2 diabetes mellitus: a potential marker of early-stage atherosclerosis. *Diabetes Res Clin Pract* 2018;139:43–51.
- Koenig W, Twardella D, Brenner H, et al. Plasma concentrations of cystatin C in patients with coronary heart disease and risk for secondary cardiovascular events: more than simply a marker of glomerular filtration rate. *Clin Chem* 2005;51:321–7.
- Lee S-H, Park S-A, Ko S-H, et al. Insulin resistance and inflammation may have an additional role in the link between cystatin C and cardiovascular disease in type 2 diabetes mellitus patients. *Metabolism* 2010;59:241–6.
- Maahs DM, Snell-Bergeon JK, Hokanson JE, et al. Relationship between cystatin C and coronary artery atherosclerosis progression differs by type 1 diabetes. *Diabetes Technol Ther* 2010;12:25–33.
- Murai T, Takebe N, Nagasawa K, et al. Association of epicardial adipose tissue with serum level of cystatin C in type 2 diabetes. *PLoS One* 2017;12:e0184723.
- Aulinas A, Crespo I, Viladés D, et al. Cystatin-C and epicardial adipose tissue as noninvasive predictors of cardiovascular risk in acromegaly. *Clin Endocrinol* 2017;86:214–22.
- Naour N, Fellahi S, Renucci J-F, et al. Potential contribution of adipose tissue to elevated serum cystatin C in human obesity. *Obesity* 2009;17:2121–6.
- Bengtsson E, To F, Grubb A, et al. Absence of the protease inhibitor cystatin C in inflammatory cells results in larger plaque area in plaque regression of apoE-deficient mice. *Atherosclerosis* 2005;180:45–53.
- Shi GP, Sukhova GK, Grubb A, et al. Cystatin C deficiency in human atherosclerosis and aortic aneurysms. *J Clin Invest* 1999;104:1191–7.
- Dedual MA, Wueest S, Challa TD, et al. Obesity-Induced increase in cystatin C alleviates tissue inflammation. *Diabetes* 2020;69:1927–35.
- Finney H, Newman DJ, Price CP. Adult reference ranges for serum cystatin C, creatinine and predicted creatinine clearance. *Ann Clin Biochem* 2000;37:49–59.
- Hosten AO. BUN and creatinine. In: Walker HK, Hall WD, Hurst JW, eds. *Clinical methods: the history, physical, and laboratory examinations*. Boston: Butterworths, 1990.
- Komorita Y, Iwase M, Fujii H, et al. The serum creatinine to cystatin C ratio predicts bone fracture in patients with type 2 diabetes: the Fukuoka diabetes registry. *Diabetes Res Clin Pract* 2018;146:202–10.
- Amado CA, Garcia-Unzueta MT, Lavin BA, et al. The ratio serum creatinine/serum cystatin C (a surrogate marker of muscle mass) as a predictor of hospitalization in chronic obstructive pulmonary disease outpatients. *Respiration* 2019;97:302–9.
- Yanishi M, Kinoshita H, Tsukaguchi H, et al. The creatinine/cystatin C ratio provides effective evaluation of muscle mass in kidney transplant recipients. *Int Urol Nephrol* 2019;51:79–83.