



# HHS Public Access

Author manuscript

*Mol Cell*. Author manuscript; available in PMC 2022 November 18.

Published in final edited form as:

*Mol Cell*. 2021 November 18; 81(22): 4736–4746.e5. doi:10.1016/j.molcel.2021.09.019.

## Simultaneous profiling of multiple chromatin proteins in the same cells

Sneha Gopalan<sup>1</sup>, Yuqing Wang<sup>2</sup>, Nicholas W. Harper<sup>3</sup>, Manuel Garber<sup>2</sup>, Thomas G. Fazio<sup>1,4,\*</sup>

<sup>1</sup>Department of Molecular, Cell, and Cancer Biology, University of Massachusetts Medical School, Worcester, MA 01605, USA

<sup>2</sup>Program in Bioinformatics and Integrative Biology, University of Massachusetts Medical School, Worcester, MA 01605, USA

<sup>3</sup>Program in Systems Biology, University of Massachusetts Medical School, Worcester, MA 01605, USA

<sup>4</sup>Lead Contact

### Summary

Methods derived from CUT&RUN and CUT&Tag enable genome-wide mapping of the localization of proteins on chromatin from as few as one cell. These and other mapping approaches focus on one protein at a time, preventing direct measurements of co-localization of different chromatin proteins in the same cells and requiring prioritization of targets where samples are limiting. Here we describe multi-CUT&Tag, an adaptation of CUT&Tag that overcomes these hurdles by using antibody-specific barcodes to simultaneously map multiple proteins in the same cells. Highly specific multi-CUT&Tag maps of histone marks and RNA Polymerase II uncovered sites of co-localization in the same cells, active and repressed genes, and candidate cis-regulatory elements. Single-cell multi-CUT&Tag profiling facilitated identification of distinct cell types from a mixed population and characterization of cell type-specific chromatin architecture. In sum, multi-CUT&Tag increases the information content per cell of epigenomic maps, facilitating direct analysis of the interplay of different chromatin proteins.

### Graphical Abstract

---

\*Correspondence: thomas.fazio@umassmed.edu.

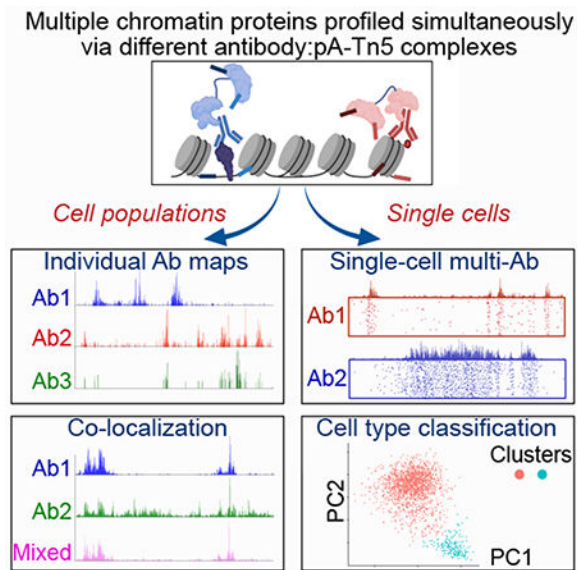
Author contributions

S.G. and T.G.F. designed the study. S.G. and N.W.H. performed preliminary method development studies. S.G. optimized the multi-CUT&Tag approach and performed all experiments included in manuscript. Bulk data were analyzed by S.G. and T.G.F., and single-cell data were analyzed by Y.W. and M.G. Finally, S.G. and T.G.F. wrote the manuscript with input from all authors.

**Publisher's Disclaimer:** This is a PDF file of an unedited manuscript that has been accepted for publication. As a service to our customers we are providing this early version of the manuscript. The manuscript will undergo copyediting, typesetting, and review of the resulting proof before it is published in its final form. Please note that during the production process errors may be discovered which could affect the content, and all legal disclaimers that apply to the journal pertain.

Declaration of interests

The authors declare no competing interests.



## eTOC Blurp

Gopalan et al. describe multi-CUT&Tag, a method for simultaneous mapping of multiple chromatin epitopes in the same cells. Multi-CUT&Tag can directly detect co-association of chromatin proteins in pools of cells or single cells, enabling studies of combinatorial gene regulatory inputs and cellular heterogeneity from small populations of cells.

## Introduction

Regulation of gene expression is a complex process involving integration of numerous positive and negative inputs from multiple regulatory proteins on a small number of cis regulatory elements (CREs) for each gene (Bulger and Groudine, 2011; Ong and Corces, 2011). CREs control the recruitment and activation of RNA Polymerase II (RNAPII) to control the production of RNA transcripts. Many different epigenetic regulators combine to determine CRE activity, including histone modifying enzymes, nucleosome remodeling factors, and enzymes that add covalent modifications to DNA bases. In turn, these epigenetic marks largely control binding of transcription factors and recruitment of additional chromatin remodeling proteins to modulate recruitment of RNAPII.

Although the identities of most regulatory proteins and epigenetic marks are now known, the mechanisms by which their regulatory inputs are integrated to produce a broad range of transcript levels remain poorly understood. For nearly 15 years, chromatin immunoprecipitation followed by deep sequencing (ChIP-seq) has been widely used for genome-wide mapping of proteins on chromatin (Klein and Hainer, 2020; Park, 2009). However, numerous technical limitations limit the utility of ChIP-seq, particularly under conditions where samples are limiting. Two newer sets of methods named CUT&RUN (Skene and Henikoff, 2017) along with similar methods (Hainer et al., 2019; Janssens et al., 2018; Ku et al., 2019), and CUT&Tag (Kaya-Okur et al., 2019) and related methods (Carter et al., 2019; Wang et al., 2019) have greatly improved the sensitivity and specificity

of chromatin profiling. Each of these methods utilizes enzymatic release and subsequent sequencing of small chromatin fragments surrounding the protein of interest. As a result, non-specific chromatin is not fragmented and subjected to immunoprecipitation, vastly reducing background and producing libraries with high signal-to-noise that require low sequencing depth.

Despite these substantial improvements in chromatin mapping, CUT&RUN and CUT&Tag do not provide insights into how various regulatory proteins function together on CREs to dictate transcriptional output. As with ChIP-seq, these mapping approaches profile one protein at a time, requiring comparisons of multiple different maps to infer the overall composition of chromatin domains. However, since different chromatin proteins or histone marks are mapped in different samples of cells, one cannot distinguish co-binding of two different proteins in the same cells from alternative binding of one protein or the other (but not both) at the same sites. This is a particular concern for CREs, where dozens of regulatory proteins (some of which are present within protein complexes measuring over one megadalton in mass) all map to the same locations, despite the potential steric problems associated with co-binding of all these proteins. An alternate approach is to perform sequential ChIP-seq (with multiple variations, including Re-ChIP and co-ChIP), where two different antibodies are used sequentially to immunoprecipitate DNA co-bound by two chromatin proteins or histone marks (Geisberg and Struhl, 2004; Kinkley et al., 2016; Weiner et al., 2016). However, sequential ChIP-seq protocols typically capture only the overlapping locations of chromatin proteins, rather than the complete genomic maps of each. In addition, these methods can be difficult to implement for many chromatin proteins, as the need for multiple immunoprecipitation steps compounds many of the inefficiencies of ChIP-seq. Consequently, it can be difficult to adapt this approach for small or heterogenous populations of cells. Split Dam ID (SpDamID) is an alternative approach to identify joint chromatin occupancy, using a protein complementation approach to mark DNA only at loci where two proteins, each tagged with a portion of bacterial Dam methylase, are simultaneously bound (Hass et al., 2015). However, SpDamID is limited to two epitopes at a time and is unsuitable for some epitopes, such as histone modifications. Consequently, no efficient, high-sensitivity, and broadly-applicable method for simultaneous profiling of chromatin proteins has been described.

Here, we developed a method based on the CUT&Tag (Kaya-Okur et al., 2019) approach that enables simultaneous mapping of multiple chromatin proteins or histone modifications in the same cells, which we denote “multi-CUT&Tag”. We use protein A-Tn5 transposase (pA-Tn5) loaded with antibody-specific barcodes to simultaneously treat cells with multiple different antibodies, each recognizing a different protein or epitope on chromatin. We find that multi-CUT&Tag exhibits high sensitivity and specificity, similar to that of standard CUT&Tag, and produces maps of different chromatin proteins that are concordant with orthogonal ChIP-seq maps of the same proteins. Multi-CUT&Tag maps revealed co-association of RNAPII with histone modifications, as well as co-association of active and repressive histone modifications at numerous sites, validating this approach as a probe of co-association of chromatin proteins. We further show that multi-CUT&Tag can be adapted for single-cell profiling in high throughput. Single-cell multi-CUT&Tag profiling of repressive and activating histone marks H3K27me3 and H3K27ac enabled clustering of cell

types within a mixed population, and inference of cell type-specific chromatin architecture. Together, these studies demonstrate that multi-CUT&Tag overcomes several limitations of current chromatin profiling methodologies by simultaneously identifying the genome-wide binding sites of multiple proteins in the same cells.

## Design

Multi-CUT&Tag was designed to fill two voids in the current toolkit of chromatin mapping technologies—the inability to profile multiple proteins from the same samples, necessitating prioritization of one or a few epitopes when samples are limiting, and the inability to directly measure co-association of chromatin proteins in cells. To this end, we developed a strategy to modify the CUT&Tag approach such that pA-Tn5 carries and deploys adapters with barcodes that are unique to different antibodies. Such an approach would allow different antibodies to be used in the same cells, enabling simultaneous mapping of multiple chromatin-associated proteins or histone modifications. This strategy, which we denote “multi-CUT&Tag”, has several unique features (Figure 1A), described below.

First, we constructed and purified a version of pA-Tn5 with an N-terminal 6-histidine (6-His) tag to facilitate purification after pA-Tn5 is loaded with oligonucleotide adapters and pre-coupled to antibodies (Abs). We used several barcoded Tn5 adapters described previously (Amini et al., 2014) (Table S1). After adapter loading, an approximately two-fold excess of barcoded pA-Tn5 protein is incubated with an antibody of interest, to form an antibody-pA-Tn5 complex (Ab-pA-Tn5). Next, uncomplexed antibody and free adapters are removed by binding pA-Tn5 to TALON beads (which binds the 6-His tag on pA-Tn5), followed by elution of Ab-pA-Tn5 with imidazole, and subsequent buffer exchange. This strategy enables reads with barcodes specific to each Ab to be directly assigned to that Ab and segregated from reads with different barcodes to generate Ab-specific maps, as described below. Conjugates corresponding to different antibodies are then used in desired combinations for mapping, using a series of incubation and washing steps similar to the original CUT&Tag approach (Kaya-Okur et al., 2019). After sample cleanup, fragments are PCR amplified to attach a second (sample-specific) barcode and the P5 and P7 elements necessary for sequencing on the Illumina platform.

Due to the presence of Ab-specific barcodes, we required a custom sequencing and demultiplexing strategy for multi-CUT&Tag libraries (Figure S1A). Reads were sequenced using custom sequencing oligos that first read through the Ab-specific barcodes, followed by the mosaic-end sequence common to all Tn5 adapters, and finally read into the genomic loci targeted by pA-Tn5. Indexing cycles using custom indexing primers were used to identify different samples. Libraries were demultiplexed based on sample-barcodes and further segregated based on Ab-specific barcodes, followed by trimming of Ab-barcodes and adapter-specific sequences. The resulting (trimmed) reads were then aligned to the genome. This pipeline, along with a few key steps of the library generation strategy, were slightly modified for single-cell sequencing, as described in the STAR Methods.

In addition to generating specific maps of different chromatin proteins from the same cells, multi-CUT&Tag was designed to directly detect colocalization of different proteins at the same genomic location. In cases where two proteins co-localize, two distinct Ab-pA-Tn5

complexes will be present within close proximity on the chromosome and can each insert a differentially barcoded set of adapters into nearby DNA. Some reads in this scenario will harbor “mixed” barcodes—different antibody barcodes at each end. These reads are identified in the process of demultiplexing, and can be compared to maps derived from homogeneous reads from each single Ab. In sum, multi-CUT&Tag is designed to leverage the benefits of “standard” CUT&Tag approaches (e.g., high sensitivity and ease-of-use) in a unique strategy that enables direct detection of proteins co-bound to the same sites in the same cells, as well as reducing the sample requirements and hands-on workload of epigenomic profiling studies.

## Results

### Simultaneous mapping of multiple chromatin proteins

To test this approach, we used various combinations of Ab-pA-Tn5 complexes to map the genomic locations of two histone modifications and the elongating form of RNA Polymerase II in mouse embryonic stem cells (mESCs). We examined H3K27me3 (a mark of repressed genes and CREs), H3K27ac (a mark of active genes and CREs), and RNA polymerase II phosphorylated on serine 2 of its C-terminal domain (a mark of actively elongating RNA polymerase II; hereafter denoted simply as RNAPII).

We tested the three individual Ab-pA-Tn5 conjugates alone, in all pair-wise combinations, and with the three Ab-pA-Tn5 conjugates combined, in pools of 100,000 mESCs. The reads from each multi-CUT&Tag library were segregated based on the antibody barcode, and individual maps specific for H3K27me3, H3K27ac, or RNAPII were generated as described in the STAR Methods. Significantly, for all three two Ab multi-CUT&Tag combinations (Figure S1B–D) and the three Ab multi-CUT&Tag combination (Figure 1B), we found that the genomic landscapes of each epitope were nearly identical to those observed in single antibody control experiments. To test whether adapters inserted by mixtures of Ab-pA-Tn5 conjugates faithfully reported the binding sites specific to each Ab, we next measured whether barcodes could “swap” between Ab-pA-Tn5 conjugates. To this end, we performed two-Ab multi-CUT&Tag experiments in which RNAPII-pA-Tn5 or H3K27me3-pA-Tn5 conjugates were mixed 1:1 with differentially barcoded IgG-pA-Tn5. IgG was previously shown to produce few reads in standard CUT&Tag experiments (Kaya-Okur et al., 2019); therefore, extensive incorporation of IgG-specific barcodes in these libraries could indicate swapping of barcodes between Ab-pA-Tn5 conjugates. However, we found that IgG-specific barcodes constituted only 0.06-0.14% of reads from these libraries (Figure S1C), ruling out barcode swapping as a potential source of experimental error in multi-CUT&Tag. Finally, as an orthogonal measure of the performance of multi-CUT&Tag maps, we examined enrichment of multi-CUT&Tag maps for each epitope at peaks called from published ChIP-seq data from other sources (Mu et al., 2018; Zhang et al., 2018), finding that both single Ab and multi-CUT&Tag libraries were highly concordant with ChIP-seq maps of the same epitopes (Figure 1C–H; Figure S2A–C).

## High sensitivity and specificity of multi-CUT&Tag profiles

To quantitatively assess the specificity and reproducibility of multi-CUT&Tag experiments, we measured the correlation among multi-CUT&Tag maps from different Abs, as described in the STAR Methods. For each individual epitope, we observed very high correlation between single Ab maps and maps from multi-CUT&Tag experiments, demonstrating high reproducibility (Figure 2A). In addition, we observed moderate to strong correlation between H3K27ac and RNAPII maps from both single Ab and multi-CUT&Tag libraries, consistent with their established roles in gene expression. Conversely H3K27ac/RNAPII maps correlated poorly with maps of H3K27me3, a repressive mark, as expected (Figure 2A). Reads corresponding to all three epitopes were enriched near gene TSSs (Figure S2D–E), as anticipated from their established patterns of localization. However, TSSs most strongly enriched for H3K27ac/RNAPII were generally poorly enriched for H3K27me3, and vice versa (Figure S2F).

Tn5 transposase is widely used to identify open chromatin regions using ATAC-seq (Buenrostro et al., 2015). Therefore, we next examined whether multi CUT&Tag, which uses Tn5 transposase fused to protein A, was prone to contamination with peaks of open chromatin that are unrelated to the epitope being profiled. To this end, we measured the correlation between multi-CUT&Tag maps and ATAC-seq maps from mESCs. As expected, we observed moderate correlation between ATAC-seq maps and multi-CUT&Tag maps of active marks: H3K27ac and elongating RNAPII (Figure S2G). In contrast, H3K27me3, a repressive mark found in lowly accessible chromatin regions, correlated very poorly with ATAC-seq, arguing against the possibility that non-specific open chromatin peaks contaminate multi-CUT&Tag profiles. This possibility is further excluded by the fact that IgG-pA-Tn5 conjugates fail to insert their adapters into the genome to any significant degree (Figure S1C), indicating that tethering of pA-Tn5 to chromatin through an antigen-antibody interaction is necessary for adapter insertion under the binding and wash conditions used for multi-CUT&Tag.

As an additional measure of specificity, we examined the fraction of reads in peaks (FRIP), a simple metric for signal to noise that has been adopted widely in genomic mapping studies (Landt et al., 2012). We observed FRIP scores from 0.35-0.70 for multi-CUT&Tag libraries for the three antibodies tested (Figure S2H–J), consistent with the high specificity observed in our single Ab maps and traditional CUT&Tag protocols (Kaya-Okur et al., 2019). These data confirm the high specificity and reproducibility of multi-CUT&Tag. Together, these results demonstrate the specificity of multi-CUT&Tag maps. Furthermore, these findings confirm that multi-CUT&Tag can not only generate accurate maps of proteins that are largely non-overlapping (e.g., H3K27me3 and RNAPII), but can also simultaneously map epitopes that strongly overlap throughout the genome (e.g., H3K27ac and RNAPII).

Active enhancers and promoters are frequently marked by H3K27ac, RNAPII, and other activators of transcription. To examine the utility of multi-CUT&Tag maps to identify actively transcribed regions, we stratified genes or previously identified candidate ESC enhancers (Moorthy et al., 2016) by H3K27ac or RNAPII read density from multi-CUT&Tag maps and quantified nascent transcription from a published mESC 4SU-seq dataset (Brown et al., 2017) at each stratum of H3K27ac or RNAPII. As expected, higher



levels of H3K27ac and RNAPII accompanied higher levels of nascent transcription, both at genes and candidate enhancers (Figure 2B–E). As one example, we observed strong peaks of enrichment for both H3K27ac and RNAPII at several predicted enhancers downstream of the *Myc* gene, including some located within actively transcribed genes marked by broad domains of moderate H3K27ac and RNAPII read density (Figure 2F–H). These data suggest multi-CUT&Tag is an effective tool for identification of candidate CREs, enabling different enhancer/promoter marks to be mapped in a single experiment, which drastically reduces the numbers of cells and experiments needed for this purpose.

### Co-localization of different chromatin proteins identified by multi-CUT&Tag

Numerous TFs, histone modifications, and chromatin regulatory proteins are thought to co-localize on chromatin, as inferred by the overlap of their CHIP-seq maps. In particular, large-scale mapping efforts have shown co-localization of dozens of proteins and epigenetic marks to known or predicted CREs (Consortium et al., 2020; Ho et al., 2014). However, the overlap among multiple chromatin proteins revealed in these and other studies could also reflect alternative binding states, where one factor or the other (but not both) bind at each overlapping site, since different factors are mapped in different cells. Consequently, a method that directly and efficiently measures co-binding of factors in the same cells is necessary to dissect the mechanisms by which CREs are utilized to direct gene expression.

Although the majority of multi-CUT&Tag reads have “homogeneous” barcodes, where barcodes corresponding to one Ab are present at both ends, a fraction of multi-CUT&Tag reads have “mixed” barcodes, with different Ab barcodes at each end (Figure 3A). Since each read is derived from a single chromosomal fragment in a single cell, reads with mixed barcodes reflect co-localization of both epitopes at the same location on the same chromosomal copy. Therefore, multi-CUT&Tag can, in principle, map the co-localization of two or more histone modifications or different chromatin proteins in cells without the requirement for single-cell profiling.

To evaluate the features and specificity of mixed reads from multi-CUT&Tag libraries, we compared maps of mixed reads corresponding to each pairwise combination of Abs to their homogeneous counterparts. For each pair of Abs examined, we observed enrichment of mixed reads at locations where homogeneous reads for both Abs were present (Figure 3B–D), although mixed reads were substantially less abundant than each set of homogeneous reads. Overall, 18–20% of the unique reads from all combinations of Abs were classified as mixed reads in the double Ab multi-CUT&Tag libraries. Peaks of enrichment of mixed reads were highly overlapping with Ab-specific (non-mixed) reads for all pairs of Abs, confirming mixed reads occur within genomic locations occupied by each pair of epitopes (Figure S3A–C). To examine whether mixed reads represented a special class of inserts within multi-CUT&Tag libraries (e.g., reads at the borders of non-overlapping chromatin domains that may be separated by variable genomic distances), we compared the size distribution of homogenous and mixed reads. We found the size classes of each set to be nearly identical, with large populations of both nucleosome-sized and sub-nucleosome-sized inserts, suggesting that mixed reads did not represent a unique sub-class of inserts within the libraries (Figure S3D–F). Finally, we observed no offset in the overall locations of mixed

and homogeneous reads (Figure 3E–G), confirming that the same genomic regions produce homogeneous reads (specific for either of two overlapping epitopes) and mixed reads from cells within the same population. These data demonstrate multi-CUT&Tag can effectively map co-localization of different chromatin proteins or histone modifications within cells, even when co-localization is relatively infrequent, as is the case for H3K27me3 vis-à-vis H3K27ac or RNAPII.

### multi-CUT&Tag profiling in single cells

We and others have previously demonstrated the ability of methods adapted from CUT&RUN or CUT&Tag to map TFs and histone modifications in single cells (Bartlett et al., 2021; Bartosovic et al., 2021; Carter et al., 2019; Hainer et al., 2019; Kaya-Okur et al., 2019; Skene and Henikoff, 2017; Wang et al., 2019; Wu et al., 2021; Xiong et al., 2021; Zhu et al., 2021). Critically, in single-cell protocols that utilize transposition by Tn5, many of the enzymatic steps and washes can be performed in bulk cell populations, followed by single-cell isolation and barcoding using any of several different methods (Bartlett et al., 2021; Bartosovic et al., 2021; Kaya-Okur et al., 2019; Wu et al., 2021). Based in part on these previous advances, we next developed a simple strategy to adapt multi-CUT&Tag to profile multiple chromatin factors in high throughput within the same single cells.

For single-cell multi-CUT&Tag (scMulti-CUT&Tag), all steps prior to tagmentation were performed in a manner similar to bulk multi-CUT&Tag, except cells were not immobilized on concanavalin A magnetic beads. After the addition of magnesium to activate Tn5, tagmented single cells were isolated in microdroplets with gel beads containing cell-specific barcoded oligonucleotides using the 10X Genomics Chromium platform (Figure 4A). After addition of cell-specific barcodes, fragments from single cells were combined and built into scMulti-CUT&Tag libraries as described in the STAR Methods. Each read in the resulting libraries featured cell-specific barcodes, sample barcodes, and antibody-specific barcodes surrounding the genomic DNA insert (Figure S4A).

As proof-of-concept, we profiled H3K27me3 and H3K27ac in a mixed population of mESCs and mouse trophoblast stem cells (mTSCs). We used a custom analysis pipeline (described in STAR Methods) to separate reads according to cell and Ab barcodes, as well as remove duplicates and quantify cut sites per cell for each antibody. First, to ensure that single-cell isolation and library preparation maintained the high specificity observed in bulk multi-CUT&Tag, we examined the aggregated reads from all cells for each antibody. Aggregate single-cell maps were similar to profiles from bulk single antibody CUT&Tag for both H3K27me3 and H3K27ac at many different loci, with similarly high signal-to-noise (Figure 4B–C, Figure S4B). Next, we examined the distribution of cut sites per cell within peaks called from bulk single cells. The median percentage of cut sites within peaks was 53% for H3K27me3 and 40% for H3K27ac, with greater than 96% of cells exhibiting above 20% of their cut sites within peaks for both antibodies (Figure 4D), confirming the high specificity of scMulti-CUT&Tag.



## Pseudo-bulk analysis of scMulti-CUT&Tag profiles uncovers cell type-specific chromatin domains

Given the high fractions of informative reads in scMulti-CUT&Tag libraries (Figure 4D), we examined whether unbiased clustering could be performed to identify distinct cell types from the mixture of ESCs and TSCs profiled. To this end, we performed latent semantic indexing (LSI), followed by clustering of cells on the first two components. We first tested several thresholds of minimum reads per cell to determine whether separable clusters of cells could be identified and the number of reads per cell needed to generate informative clusters. Significantly, we found that two distinct clusters could be identified at relatively low read thresholds (Figure S5A). We observed excellent separation of clusters of at a threshold of only 200 unique reads per cell (Figure 5A), with 1,949 cells meeting this threshold. Next, we sought to evaluate the degree to which simultaneous H3K27me3 and H3K27ac single-cell profiles enhanced identification of different cell types in a population relative to single epitope profiling. We separated the H3K27me3 and H3K27ac insertion sites for each cell and repeated the LSI and clustering analysis on each individual set. ESC and TSC clusters were easily identified using both single epitopes, and very few (~0.01%) of cells were assigned to a different cluster in the single epitope analyses compared to the double epitope clusters. However, double epitope clusters were generally better separated than either single epitope cluster and had a higher fraction of cells passing the minimum read threshold (Figure S5B).

We next generated pseudo-bulk maps of histone marks from each cluster of cells to identify which cell type made up each cluster and determine whether known features of ESC and TSC chromatin structure can be identified from scMulti-CUT&Tag maps. Clusters corresponding to ESC or TSC identities were evident based on differences in chromatin profiles at several cell type-specific marker genes. As one example, the TSC master regulatory gene *Cdx2*, which is expressed specifically in TSCs, exhibits high H3K27me3 throughout its upstream regulatory regions and gene body in ESCs and higher H3K27ac in TSCs, as expected (Figure 5B, C). To further explore differences in chromatin architecture in the ESC and TSC clusters, we identified regions of differential enrichment of both histone modifications between the two clusters. Among regions with significant cell type-specific differences in chromatin architecture, we observed regulatory regions or coding sequences of multiple genes with established roles in ESCs or TSCs (Figure 5D, E). As one prominent example, the *Hand1* gene, which encodes a transcription factor that functions in TSC differentiation, was associated with notably higher levels of H3K27ac in the TSC cluster. Additional examples include *Klf4* and *Pou5f1*, encoding key ESC transcription factors, the developmental transcription factor *Meis1*, and other lineage specific genes (Figure 5D, E). As independent validation, we observed that peaks of H3K27ac or H3K27me3 enrichment specific to the ESC cell cluster were strongly enriched in publicly available ChIP-seq maps from ESCs relative to TSCs (Chuong et al., 2013; Dunham et al., 2012) (Figure S5C). In sum, these studies confirm the ability of scMulti-CUT&Tag maps to identify different cell types from a mixed population of cells and uncover cell type-specific differences in chromatin structure.

## Discussion

Here we have described multi-CUT&Tag, an approach based on the CUT&Tag method for genome-wide chromatin mapping using targeted recruitment of pA-Tn5 to mark the genomic locations of chromatin proteins in cells (Kaya-Okur et al., 2019). This rapidly evolving technology has recently been modified multiple times for different single-cell protocols such as droplet-based cell isolation or split-pool barcoding, linear amplification of inserts, and profiling of RNA from the same cells used for mapping of chromatin proteins (Bartlett et al., 2021; Bartosovic et al., 2021; Wu et al., 2021; Xiong et al., 2021; Zhu et al., 2021). However, each of these methods can be performed on only one protein at a time per cell or pool of cells. In contrast, we use pre-coupling of pA-Tn5 to Abs to generate uniquely barcoded Ab-pA-Tn5 complexes that can be used simultaneously in the same cells to map multiple proteins. We demonstrate simultaneous use of three Ab-pA-Tn5 complexes in bulk samples and two Ab-pA-Tn5 complexes in single cells. However, the number of different Ab-pA-Tn5 combinations that can simultaneously be profiled may be significantly higher, depending on the specific combinations of epitopes to be mapped.

Multi-CUT&Tag was designed to provide two advances relative to current approaches, which will enable studies that have, until now, been unfeasible. First, epigenomic maps of multiple chromatin proteins can be generated from the same biological samples. When samples are limiting, as is the case with many human tissue specimens, sorted populations of rare cell types, or embryonic stages of various animal models, there may not be material sufficient to map multiple epitopes using standard approaches. A second advantage is the ability to directly measure co-association of different chromatin proteins. Although co-association of chromatin proteins is often inferred when two proteins have overlapping peaks of enrichment, the possibility each protein binds overlapping regions in different populations of cells cannot be ruled out when each protein is mapped separately. A significant minority of inserts from two and three Ab multi-CUT&Tag libraries contained barcodes for different Abs at each end, demonstrating co-localization of chromatin proteins can be directly measured by multi-CUT&Tag, even at the relatively low sequencing depth required for CUT&RUN and CUT&Tag based approaches (Kaya-Okur et al., 2019; Skene and Henikoff, 2017). It is worth noting that many potential co-localization studies can be performed using multi-CUT&Tag without the need for single-cell isolation and barcoding, since each mixed read reflects colocalization of two epitopes in a single cell, regardless of the number of cells used for mapping. This can be advantageous over scMulti-CUT&Tag in many cases, due to its lower cost.

We observed the expected co-localization of the active histone modification H3K27ac with RNAPII, as well as some unexpected overlap between H3K27ac and the repressive mark, H3K27me3. Although other combinations of activating/repressive marks, such as H3K4me3 and H3K27me3, are well known to co-localize at “poised” regulatory regions (Azura et al., 2006; Bernstein et al., 2006), co-localization of H3K27ac and H3K27me3 is less well-established. Overlap between individual H3K27ac and H3K27me3 ChIP-seq maps can be observed, typically at low levels that may not be classified as peaks. Such low-level overlap from ChIP-seq maps may suggest these marks are present at the same sites in different populations of cells where chromatin structure is not homogeneously active or

inactive. By mapping both marks simultaneously in the same cells, we were able to address this possibility directly, showing that these marks do indeed co-localize at some loci.

In addition to joint profiling of multiple epitopes in bulk, we also demonstrate the utility of multi-CUT&Tag in single cells. For single-cell mapping, we adapted multi-CUT&Tag for use with the 10X Genomics Chromium platform, due to its ease of use and relative availability. However, we anticipate that this approach can easily be adapted to other single-cell workflows, such as the ICELL8 system or split-pool barcoding, which have previously been used in CUT&Tag studies (Bartlett et al., 2021; Kaya-Okur et al., 2019; Xiong et al., 2021; Zhu et al., 2021). Single-cell libraries exhibited similarly high signal-to-noise as bulk multi-CUT&Tag libraries and traditional CUT&Tag approaches, as determined by the fraction of cut sites within peaks. This high specificity—evident in both single-cell and pseudo-bulk browser tracks of both H3K27me3 and H3K27ac—enables clustering of cell types and identification of cell type-specific chromatin domains.

In sum, multi-CUT&Tag enables high-efficiency, simultaneous profiling of multiple chromatin proteins in the same cells. This approach will facilitate studies of co-binding of chromatin proteins that have, until now, been impractical. In addition, single-cell adaptations of multi-CUT&Tag enable profiling of different cell types within heterogeneous populations to uncover cell type-specific differences in chromatin structure.

### Limitations of the study

Multi-CUT&Tag utilizes a custom sequencing strategy (described in STAR Methods), which prevents pooling multi-CUT&Tag libraries with libraries that require standard Illumina sequencing primers. In addition, the efficiency of multi-CUT&Tag is likely limited by the fact that only two Ab barcodes can be present in each unique genomic insert. Accordingly, if a very high number of different Ab-pA-Tn5 combinations are used, Ab-pA-Tn5 complexes corresponding to co-localizing chromatin proteins will likely interfere with each other by competing for insertion into the same DNA fragments. The ability of multi-CUT&Tag to directly detect co-binding of two proteins, and/or co-localization of different histone modifications, represents a major advance that enables mechanistic studies of binding cooperativity that were previously limited to biochemical approaches. However, it is difficult to distinguish whether mixed multi-CUT&Tag reads for histone modifications exist on the same nucleosome or adjacent nucleosomes, since adapters mapping between two nucleosomes could be derived from pA-Tn5 complexes recruited by histone modifications on either nucleosome. This problem may be mitigated in the case of sequence-specific DNA binding proteins, where regions with well-separated sets of binding sites for each protein can be examined. However, further work is necessary to enable robust multi-CUT&Tag profiling of sequence-specific DNA binding proteins, such as transcription factors, due to their poorer performance relative to histone modifications and RNAPII in CUT&Tag (Kaya-Okur et al., 2020).

One advantage of all CUT&Tag-based approaches is their high specificity, as determined by the fractions of reads within peaks compared with ChIP-seq approaches, enabling generation of high-quality maps from as few as 2-3 million reads (Kaya-Okur et al., 2019, 2020). Consistent with this finding, typical negative controls used in ChIP-seq studies, such as

non-specific IgG, perform poorly in CUT&Tag and multi-CUT&Tag, preventing usage of such controls as background models for peak finding. The high overall specificity of multi-CUT&Tag is nonetheless limited by the specificity of antibodies used in CUT&Tag methods. The flip side to the high fraction of reads within peaks observed in CUT&Tag and multiCUT&Tag is that fewer unique inserts per cell are obtained from scMulti-CUT&Tag compared with alternative epigenetic profiling approaches such as scATAC-seq, as previously demonstrated for standard CUT&Tag and similar techniques (Bartosovic et al., 2021; Carter et al., 2019; Kaya-Okur et al., 2019; Wang et al., 2019; Wu et al., 2021; Zhu et al., 2021). While a majority of reads from bulk ChIP-seq and scChIP-seq maps fall outside of peaks, as detailed by others (Kaya-Okur et al., 2020), these “background” reads are less abundant in bulk and single-cell CUT&Tag/multi-CUT&Tag maps, reducing the number reads obtained per cell. Despite this property, we found that aggregate scMulti-CUT&Tag data from ~3,500 single cells faithfully recapitulated bulk multi-CUT&Tag maps. We further showed that a mixed population of ESCs and TSCs could easily be segregated on the basis of their joint H3K27ac/H3K27me3 profiles, demonstrating the power of the scMulti-CUT&Tag approach. Interestingly, TIP-seq, a recent modification of CUT&Tag, appears to significantly increase the numbers of unique reads per cell in single-cell studies by virtue of a linearly amplified RNA readout (Bartlett et al., 2021). Therefore, adaptation of the TIP-seq RNA amplification strategy into scMulti-CUT&Tag may further enhance this method.

## STAR Methods

### Resource Availability

**Lead Contact**—Further information and requests for resources and reagents should be directed to and will be fulfilled by Thomas Fazzio (thomas.fazzio@umassmed.edu).

**Materials Availability**—All experimental materials are available from the authors upon reasonable request.

**Data and Code Availability**—• Genomic sequencing data have been deposited at Gene Expression Omnibus (GEO) and are publicly available as of the date of publication. Accession numbers are listed in the key resources table.

- All original code has been deposited at Zenodo and is publicly available as of the date of publication. DOIs are listed in the key resources table.
- Any additional information required to reanalyze the data reported in this paper is available from the lead contact upon request.

### Experimental model and subject details

**Cell culture**—E14 mouse embryonic stem cells (ESCs) were grown in DMEM-high glucose media (MilliporeSigma, D6546-500ML) containing 10% Fetal Bovine Serum (MilliporeSigma, F2442), 2 mM L-Glutamine (Corning, 25-005-CI), MEM Nonessential Amino Acids (Corning, 25-025-CI),  $\beta$ -mercaptoethanol (MilliporeSigma, M6250) and recombinant leukemia inhibitory factor. 5-4 mouse trophoblast stem cells (TSCs) were

grown in RPMI 1640 media (ThermoFisher, 11875093) supplemented with 20% Fetal Bovine Serum, 2 mM L-Glutamine, 100  $\mu$ M  $\beta$ -mercaptoethanol containing 25 ng/mL FGF4 (Peprotech, 100-31) and 1  $\mu$ g/mL heparin (Sigma, H3149). 70% of the TSC media was pre-conditioned by growing on feeder cells before use. Both ESCs and TSCs were maintained on plates coated with 0.2% gelatin.

## Method details

**Quantification and statistical analysis**—Descriptions of graphs depicting quantitative data are included in the figure legends. To compare differences in enrichment between cell types in single cell analyses, we used two-sided Wilcoxon Rank Sum Tests (*wilcox.test* in R), due to the non-normal distribution of the data. P-values were calculated after continuity correction. After filtering cells based on minimum reads per cell, as described in the Single-Cell Multi-CUT&Tag data analysis section below, no data were excluded in the figures or statistical comparisons.

**pA-Tn5 purification and antibody coupling**—Histidine tagged pA-Tn5 was produced by Gibson cloning gBlocks (IDT) encoding 6-histidine tagged protein A fused to Tn5 transposase through a flexible linker (as described (Kaya-Okur et al., 2019)) into pET28a cut with NcoI and BamHI. Protein was expressed overnight at 18 °C as described (Kaya-Okur et al., 2019) in BL21 DE3 pLysS bacteria and purified at 4 °C using TALON beads according to the manufacturers' recommendations. After dialysis into pA-Tn5 storage buffer (20mM HEPES pH 7.2, 0.2M NaCl, 0.2mM EDTA, 2mM DTT, 0.2% TritonX-100, 50% glycerol), we decided to remove trace impurities as follows. Protein was diluted four-fold into HN<sub>50</sub>TE (20mM HEPES pH 7.2, 10mM NaCl, 0.2% TritonX-100, 0.5mM EDTA). Diluted protein was bound to Q Sepharose Fast Flow in batch, and the unbound protein was bound to SP-Sepharose Fast Flow. After washing with approximately 20 bed volumes of HN<sub>50</sub>TE and 10 bed volumes of HN<sub>150</sub>TE (same as HN<sub>50</sub>TE except 150mM NaCl), pA-Tn5 was eluted twice with three bed volumes of HN<sub>800</sub>TE. Eluate was dialyzed into pA-Tn5 storage buffer (see above). Aliquots were quick frozen and stored long-term at –80 °C, and short term at –20 °C.

pA-Tn5 was loaded with annealed, barcoded Tn5 adapter A and Tn5 adapter B oligos (with sequences indicated in Table S1) that have been described previously (Amini et al., 2014). (Tn5 adapter A oligos consisted of the “P5\_i5\_N\_Universal\_Connector\_A” series in Table S1 and Tn5 adapter B oligos consisted of “P7\_i7\_N\_Universal\_Connector\_B” series, where each “N” is a number that refers to a specific barcode.) Tn5 adapters A and B were annealed by mixing each at 45  $\mu$ M in annealing buffer (10 mM Hepes pH 7.2, 50 mM NaCl, 1 mM EDTA), heating to 95 °C for 5 minutes, and cooling at 0.1 °C/minute until they reached 25 °C. Annealed oligos were loaded onto pA-Tn5 by incubating 25  $\mu$ L of purified pA-Tn5 (21 $\mu$ M) with 35  $\mu$ L of 100% glycerol and 35  $\mu$ L of 45  $\mu$ M annealed Tn5 adapters A and B at room temperature for 60 minutes. Adapter-loaded pA-Tn5 prepared in this manner was incubated with an antibody of interest (at approximately a 2:1 ratio of pA-Tn5:antibody, calculated based on Ab and pA-Tn5 concentrations and their predicted molecular weights) for 4 hours or overnight at 4 °C. To purify the Ab-pA-Tn5 complex, His-Tag purification was performed using Dynabeads His-Tag Isolation and Pulldown (Invitrogen, 10103D).

Beads were allowed to bind to Ab-pA-Tn5 complex for 2 hours at 4 °C, washed twice with phosphate buffered saline (PBS), and the bound complexes were eluted using PBS containing 300mM imidazole. Imidazole was removed from the eluted purified complexes by buffer exchange using Amicon Ultra- 0.5mL Centrifugal filters (Millipore, UFC501096). The purified Ab-pA-Tn5 complex was stored in PBS with 50% glycerol at –20 °C.

**Bulk multi-CUT&Tag and library preparation**—Differentially barcoded, purified Ab-pA-Tn5 complexes were used to perform multi-CUT&Tag experiments. Mouse ESCs or TSCs were trypsinized and counted using a TC-10 cell counter (Biorad). 100,000 cells were washed and resuspended in wash buffer (20 mM HEPES pH 7.5; 150 mM NaCl; 0.5 mM Spermidine; 1× Protease inhibitor cocktail) and used for bulk multi-CUT&Tag. 10 µL of Concanavalin A coated magnetic beads (Polysciences) per sample were activated as described (Hainer and Fazio, 2019), added to cells, and incubated at RT for 15 min. Bead-bound cells were resuspended in 100 µL Dig-wash Buffer (20 mM HEPES pH 7.5; 150 mM NaCl; 0.5 mM Spermidine; 0.05% Digitonin; 1× Protease inhibitor cocktail) containing 2 mM EDTA and 2 µg of each differentially barcoded purified Ab-pA-Tn5 complex was added. The mixture was incubated overnight at 4 °C for antibodies to bind. Cells were washed thrice in Dig-med Buffer (20 mM HEPES, pH 7.5; 300 mM NaCl; 0.5 mM Spermidine; 0.01% Digitonin; 1× Protease inhibitor cocktail) by placing the tube on the magnetic stand until the solution clears and removing all liquid by pipetting. The cells were then resuspended in 300 µL Dig-med Buffer containing 10 mM MgCl<sub>2</sub> and incubated at 37 °C for 1 hour to activate tagmentation. To stop tagmentation, 10 µL of 0.5 M EDTA, 3 µL of 10% SDS and 1 µL of 20 mg/mL Proteinase K was added to each tube, which were incubated at 55 °C for 1 hour. DNA was extracted by performing one phenol:chloroform extraction followed by ethanol precipitation. The DNA pellet was resuspended in 22 µL of 10 mM Tris pH 8.

The libraries were then amplified by mixing 21 µL of DNA with 2µL each of (10 µM) barcoded i5 and i7 primers, using a different combination for each sample. 25 µL NEBNext HiFi 2× PCR Master mix (NEB) was added, and PCR was performed using the following cycling conditions: 72 °C for 5 minutes (gap filling); 98 °C for 30 seconds; 17 cycles of 98 °C for 10 seconds and 63 °C for 30 seconds; final extension at 72 °C for 1 minute and hold at 4 °C. 1.1× volume of Ampure XP beads (Beckman Coulter) was incubated with libraries for 10 minutes at room temperature to clean up the PCR mix. Bead bound DNA was purified by washing twice with 80% ethanol and eluting in 20 µL 10 mM Tris pH 8.0. The libraries were quantified by Qubit and sequenced as described below.

**Bulk multi-CUT&Tag Sequencing and data analysis**—Paired-end sequencing was performed on an Illumina NextSeq 500 using custom read and index primers (Table S1). The sequencing parameters were as follows: read 1—72 cycles, read 2—72 cycles, index 1—8 cycles, index 2—8 cycles (for bulk multi-CUT&Tag) or 16 cycles (for scMulti-CUT&Tag). PhiX DNA was added to 20-30%, due to the sequence homogeneity of the initial sequencing cycles, which read through regions of the adapter that are identical in all reads. Paired-end reads from each sample were then split based on their antibody specific barcodes on both ends of the fragment using novoBarcode (<http://www.novocraft.com/>



[documentation/novobarcode/](#)). The first 42 bases of the reads were trimmed to remove the Antibody barcodes and the bases common to all Tn5 adapter sequences. The reads were then aligned to the mouse genome (mm10) using Bowtie2 with the parameters -N 1 and -X 2000. Duplicates were removed using Picard (<http://broadinstitute.github.io/picard/>). Reads with low quality scores (MAPQ < 10) were removed. The remaining mapped reads were then processed using the HOMER software suite (Heinz et al., 2010). Genome browser tracks were generated using the “makeUCSCfile” command, and peaks were called using the “findPeaks” command. Heatmaps and aggregation plots were made using the “annotatePeaks” command. Read counts for all libraries are included in Table S2.

GEO accession numbers for published ChIP-seq datasets to which multi-CUT&Tag datasets were compared were: H3K27me3 (Mu et al., 2018) (GSE123174), H3K27ac (GSE31039), RNAPII (Zhang et al., 2018) (GSE112113), and 4SU-seq (Brown et al., 2017) (GSE93538). The datasets were aligned to mm10 using Bowtie2, processed in Homer and peaks were called using “findPeaks” command. Predicted mESC enhancers were obtained from Moorthy et al (Moorthy et al., 2016). ENCODE candidate cis regulatory elements (cCREs) from E14 ESCs (Consortium et al., 2020) were filtered using the following criteria: DNase I z-score 2.5, H3K27ac z-score 2.5, H3K4me3 z-score 2.

**Single-Cell Multi-CUT&Tag**—For single-cell Multi-CUT&Tag, 200,000 cells were washed in wash buffer and resuspended in 100  $\mu$ L Dig-wash Buffer containing 2 mM EDTA and combinations of differentially barcoded purified Ab-pA-Tn5 complexes. At each wash step, cells were pelleted at 600 g for 3 minutes at 4°C and the supernatant was discarded. Cells were incubated overnight with Ab-pA-Tn5 complex at 4 °C. Cells were washed thrice with Dig-wash Buffer and counted during the last wash, due to the loss of a portion of cells during the wash steps. Cells were then resuspended in Dig-med Buffer at 5000cells/ $\mu$ L and incubated on ice for 5 minutes. To start tagmentation, we added an equal volume of Dig-med Buffer containing 20 mM MgCl<sub>2</sub> and incubated samples at 37 °C for 1 hour.

After one hour, 2.5  $\mu$ L of the tagmentation reaction (2500 cells/ $\mu$ L) was used for a targeted cell recovery of 4000 cells and mixed with 2.5  $\mu$ L of Diluted Nuclei Buffer, 7  $\mu$ L of ATAC buffer (both from the Chromium Single Cell ATAC Reagent Kit, 10X Genomics), 3  $\mu$ L of 50% glycerol and 0.5  $\mu$ L of 5M NaCl. The preparation of the cell barcoding master mix, loading of the sample onto Chromium ChIP E (10X Genomics), running the sample on the 10X Chromium device, and transfer of GEMs were all performed according to the manufacturer’s protocol for single-cell ATAC-seq. After preparation of GEMs, the GEM-containing tube was incubated in a thermocycler under the following conditions: 72 °C for 5 minutes; 98 °C for 30 seconds; 1 cycle of 98 °C for 10 seconds, 59 °C for 30 seconds and 72 °C for 1 minute and hold at 15 °C. (Note, the use of a single amplification cycle at this step differs from the manufacturer’s recommendations for scATAC-seq, which recommends >10 cycles of linear amplification to introduce cell-specific barcodes. We found that elimination of all but one amplification cycle at this step was necessary to prevent incorporation of uninserted Tn5 adapters into libraries.) Post GEM cleanup using Dynabeads MyOne SILANE and Ampure XP beads was performed according to manufacturer’s protocol. Libraries were then constructed using sample indexing primers (Single Index Kit, 10X Genomics), performing 14 cycles of PCR according to manufacturer’s protocol.

Post-PCR, we performed a double size selection using Ampure XP beads according to the manufacturer's protocol and sequenced the libraries as described above.

**Single-Cell Multi-CUT&Tag data analysis:** BCL file conversion and demultiplexing was done using cellranger-atac/1.1.0. To eliminate the effect of errors introduced in the library preparation and sequencing processes, the reads were considered as valid only if both antibody barcodes were within the Tn5 barcode list and the cell barcode was in the whitelist provided by 10X genomics. Valid reads extraction and barcode correction were done using a custom script. Potential read-through adaptors were removed by cutadapt/1.9 (Martin, 2011). Reads were aligned to the mm10 genome with bowtie2/2.4.1, and low-quality reads were removed using samtools (Li et al., 2009) with -q 30. Read pairs were considered as duplicates of the same DNA fragment if they met two criteria: their cell barcodes were identical, and they had identical start and end locations in the genome. After deduplication using a custom script, the unique cut sites were then separated according to the antibody barcodes for independent downstream process. The cut sites were extended by 100 bp on each end using bedtools/2.28.0 (Quinlan and Hall, 2010) and peaks were then called using the MACS2 (Zhang et al., 2008) 'callpeak' command in macs/1.4.2 with --nomodel --broad flags. Peaks with fewer than 2 cut sites per base pair per million cut sites were removed as low-quality peaks. Peaks within 3000 bp were then merged. Peaks and cut sites that overlapped with the ENCODE mm10 blacklist region were removed. Peak-cell matrices for both antibodies were generated independently and then combined for the downstream analysis. After removing cell barcodes with fewer than 200 unique cut sites per cell, dimension reduction was done on regions detected in more than 20 cells with LSI implemented in Seurat/3.1.4 (Stuart et al., 2019), and unsupervised density clustering was applied on the first two LSI components. Cell identity was annotated based on the H3K27ac and H3K27me3 enrichment levels near established TSC and ESC marker genes. For plotting purposes, reads per cell were normalized to the same number, i.e. median of reads per cells. The *FindMarkers* function in Seurat was used for identification of differentially enriched regions, with test.use = 'LR' and latent.vars set to the unique reads per cell. To test the significance of differences in H3K27me3 or H3K27ac enrichment between ESCs and TSCs, we used a two-sided Mann-Whitney-Wilcoxon (MWW) rank sum test, owing to the non-normal distributions of the data in each group.

**ATAC-seq**—ATAC-seq (Buenrostro et al., 2013) was performed essentially as modified (Corces et al., 2017). Briefly, 50,000 ESCs were trypsinized and washed in PBS. Cells were resuspended in 48.5  $\mu$ L resuspension buffer (10mM Tris pH 7.5, 10 mM NaCl, 3 mM MgCl<sub>2</sub>), and 0.5  $\mu$ L 10% NP40, 0.5  $\mu$ L 10% Tween 20, and 0.5  $\mu$ L 1% Digitonin were then added. Cells were incubated on ice for 15 minutes. 990  $\mu$ L of additional resuspension buffer and 10  $\mu$ L 10% Tween 20 were then added. Cells were pelleted using a microcentrifuge at 500g for 10 minutes at 4 °C. The pellet was resuspended in 25  $\mu$ L Tagment DNA Buffer (Illumina), 16.5  $\mu$ L PBS, 0.5  $\mu$ L Tween 20, 0.5  $\mu$ L Digitonin, 1.5  $\mu$ L Tagment DNA Enzyme 1 (Illumina) and 6  $\mu$ L H<sub>2</sub>O and incubated for 30 minutes at 37 °C. DNA was isolated using a MinElute Reaction Cleanup Kit (Qiagen). The DNA was eluted in 10  $\mu$ L of Elution Buffer.

The libraries were then amplified by mixing 10  $\mu$ L of DNA with 1.25  $\mu$ L each of (25  $\mu$ M) barcoded i5 and i7 primers, using a different combination for each sample. 12.5  $\mu$ L NEBNext HiFi 2 $\times$  PCR Master mix (NEB) was added, and PCR was performed using the following cycling conditions: 72  $^{\circ}$ C for 5 minutes; 98  $^{\circ}$ C for 30 seconds; 6 cycles of 98  $^{\circ}$ C for 10 seconds and 63  $^{\circ}$ C for 30 seconds; final extension at 72  $^{\circ}$ C for 1 minute and hold at 4  $^{\circ}$ C. The libraries were run on a 1.5% agarose gel and DNA between 150-500 bp was purified. The libraries were quantified by Qubit and sequenced on an Illumina NextSeq 500. Paired-end reads were analyzed similarly to Bulk multi-CUT&Tag libraries.

**Data visualization**—Browser tracks were made with the UCSC genome browser (Gonzalez et al., 2021). Latent semantic indexing (LSI) plots were made with Seurat (Stuart et al., 2019). Single-cell coverage plots were made with *ComplexHeatmap* (Gu et al., 2016) in R. Heatmaps of chromatin mapping data were made with Java Treeview, and heatmaps of correlation data were made with *gplots* in R. Schematics of multi-CUT&Tag workflows were made with BioRender.

## Supplementary Material

Refer to Web version on PubMed Central for supplementary material.

## Acknowledgements

We thank Sundeep Kalantry for providing TSCs, Pranitha Vangala for advice on single-cell analyses, and Jennifer Benanti for critical comments on the manuscript. This work was supported by NIH grants R01HD072122 and R01HD093783 to T.G.F. and R21CA236594 to M.G.

## References

- Amini S, Pushkarev D, Christiansen L, Kostem E, Royce T, Turk C, Pignatelli N, Adey A, Kitzman JO, Vijayan K, et al. (2014). Haplotype-resolved whole-genome sequencing by contiguity-preserving transposition and combinatorial indexing. *Nat Genet* 46, 1343–1349. [PubMed: 25326703]
- Azuara V, Perry P, Sauer S, Spivakov M, Jørgensen HF, John RM, Gouti M, Casanova M, Warnes G, Merckenschlager M, et al. (2006). Chromatin signatures of pluripotent cell lines. *Nat Cell Biol* 8, 532–538. [PubMed: 16570078]
- Bartlett DA, Dileep V, Henikoff S, and Gilbert DM (2021). High throughput genome-wide single cell protein:DNA binding site mapping by targeted insertion of promoters (TIP-seq). *BioRxiv* 2021.03.17.435909.
- Bartosovic M, Kabbe M, and Castelo-Branco G (2021). Single-cell CUT&Tag profiles histone modifications and transcription factors in complex tissues. *Nat Biotechnol* 39, 825–835. [PubMed: 33846645]
- Bernstein BE, Mikkelsen TS, Xie X, Kamal M, Huebert DJ, Cuff J, Fry B, Meissner A, Wernig M, Plath K, et al. (2006). A bivalent chromatin structure marks key developmental genes in embryonic stem cells. *Cell* 125, 315–326. [PubMed: 16630819]
- Brown DA, Cerbo VD, Feldmann A, Ahn J, Ito S, Blackledge NP, Nakayama M, McClellan M, Dimitrova E, Turberfield AH, et al. (2017). The SET1 Complex Selects Actively Transcribed Target Genes via Multivalent Interaction with CpG Island Chromatin. *Cell Reports* 20, 2313–2327. [PubMed: 28877467]
- Buenrostro JD, Giresi PG, Zaba LC, Chang HY, and Greenleaf WJ (2013). Transposition of native chromatin for fast and sensitive epigenomic profiling of open chromatin, DNA-binding proteins and nucleosome position. *Nat Methods* 10, 1213–1218. [PubMed: 24097267]

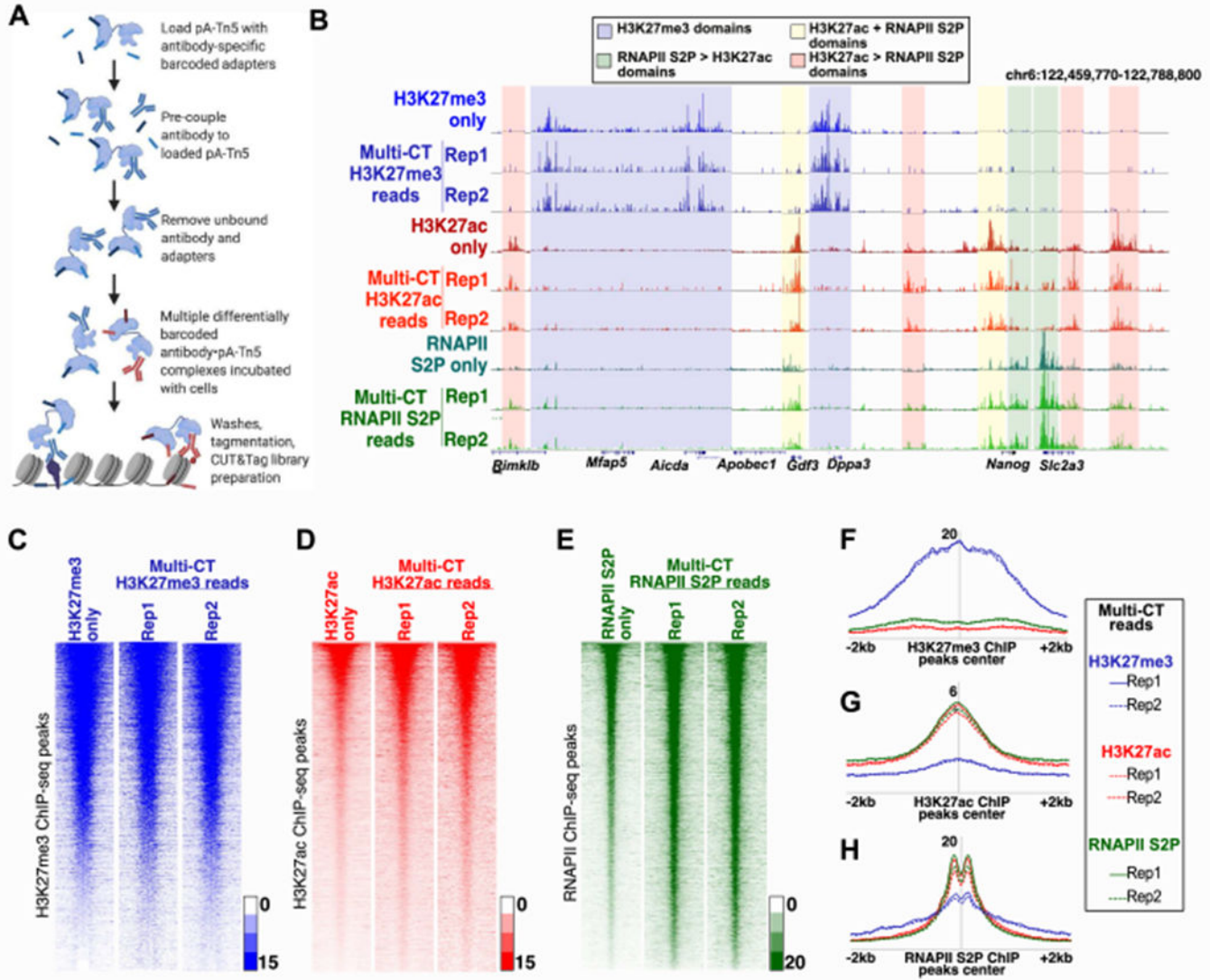
- Buenrostro JD, Wu B, Chang HY, and Greenleaf WJ (2015). ATAC-seq: A Method for Assaying Chromatin Accessibility Genome-Wide. *Curr Protoc Mol Biology* 109, 21.29.1–9.
- Bulger M, and Groudine M (2011). Functional and Mechanistic Diversity of Distal Transcription Enhancers. *Cell* 144, 327–339. [PubMed: 21295696]
- Carter B, Ku WL, Kang JY, Hu G, Perrie J, Tang Q, and Zhao K (2019). Mapping histone modifications in low cell number and single cells using antibody-guided chromatin tagmentation (ACT-seq). *Nat Commun* 10, 3747. [PubMed: 31431618]
- Chuong EB, Rumi MAK, Soares MJ, and Baker JC (2013). Endogenous retroviruses function as species-specific enhancer elements in the placenta. *Nat Genet* 45, 325–329. [PubMed: 23396136]
- Consortium EP, Moore JE, Purcaro MJ, Pratt HE, Epstein CB, Shores N, Adrian J, Kawli T, Davis CA, Dobin A, et al. (2020). Expanded encyclopaedias of DNA elements in the human and mouse genomes. *Nature* 583, 699–710. [PubMed: 32728249]
- Corces MR, Trevino AE, Hamilton EG, Greenside PG, Sinnott-Armstrong NA, Vesuna S, Satpathy AT, Rubin AJ, Montine KS, Wu B, et al. (2017). An improved ATAC-seq protocol reduces background and enables interrogation of frozen tissues. *Nat Methods* 14, 959–962. [PubMed: 28846090]
- Dunham I, Kundaje A, Aldred SF, Collins PJ, Davis CA, Doyle F, Epstein CB, Frietze S, Harrow J, Kaul R, et al. (2012). An integrated encyclopedia of DNA elements in the human genome. *Nature* 489, 57–74. [PubMed: 22955616]
- Geisberg JV, and Struhl K (2004). Analysis of Protein Co-Occupancy by Quantitative Sequential Chromatin Immunoprecipitation. *Curr Protoc Mol Biology* 68, 21.8.1–21.8.7.
- Gonzalez JN, Zweig AS, Speir ML, Schmelter D, Rosenbloom KR, Raney BJ, Powell CC, Nassar LR, Maulding ND, Lee CM, et al. (2021). The UCSC Genome Browser database: 2021 update. *Nucleic Acids Res* 49, D1046–D1057. [PubMed: 33221922]
- Gu Z, Eils R, and Schlesner M (2016). Complex heatmaps reveal patterns and correlations in multidimensional genomic data. *Bioinformatics* 32, 2847–2849. [PubMed: 27207943]
- Hainer SJ, and Fazio TG (2019). High-Resolution Chromatin Profiling Using CUT&RUN. *Curr Protoc Mol Biology* 126, e85.
- Hainer SJ, Bošković A, McCannell KN, Rando OJ, and Fazio TG (2019). Profiling of Pluripotency Factors in Single Cells and Early Embryos. *Cell* 177, 1319–1329.e11. [PubMed: 30955888]
- Hass MR, Liow H, Chen X, Sharma A, Inoue YU, Inoue T, Reeb A, Martens A, Fulbright M, Raju S, et al. (2015). SpDamID: Marking DNA Bound by Protein Complexes Identifies Notch-Dimer Responsive Enhancers. *Mol Cell* 59, 685–697. [PubMed: 26257285]
- Heinz S, Benner C, Spann N, Bertolino E, Lin YC, Laslo P, Cheng JX, Murre C, Singh H, and Glass CK (2010). Simple combinations of lineage-determining transcription factors prime cis-regulatory elements required for macrophage and B cell identities. *Mol Cell* 38, 576–589. [PubMed: 20513432]
- Ho JWK, Jung YL, Liu T, Alver BH, Lee S, Ikegami K, Sohn K-A, Minoda A, Tolstorukov MY, Appert A, et al. (2014). Comparative analysis of metazoan chromatin organization. *Nature* 512, 449–452. [PubMed: 25164756]
- Janssens DH, Wu SJ, Sarthy JF, Meers MP, Myers CH, Olson JM, Ahmad K, and Henikoff S (2018). Automated in situ chromatin profiling efficiently resolves cell types and gene regulatory programs. *Epigenet Chromatin* 11, 74.
- Kaya-Okur HS, Wu SJ, Codomo CA, Pledger ES, Bryson TD, Henikoff JG, Ahmad K, and Henikoff S (2019). CUT&Tag for efficient epigenomic profiling of small samples and single cells. *Nat Commun* 10, 1930. [PubMed: 31036827]
- Kaya-Okur HS, Janssens DH, Henikoff JG, Ahmad K, and Henikoff S (2020). Efficient low-cost chromatin profiling with CUT&Tag. *Nat Protoc* 15, 3264–3283. [PubMed: 32913232]
- Kinkley S, Helmuth J, Polansky JK, Dunkel I, Gasparoni G, Fröhler S, Chen W, Walter J, Hamann A, and Chung H-R (2016). reChIP-seq reveals widespread bivalency of H3K4me3 and H3K27me3 in CD4+ memory T cells. *Nat Commun* 7, 12514. [PubMed: 27530917]
- Klein DC, and Hainer SJ (2020). Genomic methods in profiling DNA accessibility and factor localization. *Chromosome Res* 28, 69–85. [PubMed: 31776829]

- Ku WL, Nakamura K, Gao W, Cui K, Hu G, Tang Q, Ni B, and Zhao K (2019). Single-cell chromatin immunocleavage sequencing (scChIC-seq) to profile histone modification. *Nat Methods* 16, 323–325. [PubMed: 30923384]
- Landt SG, Marinov GK, Kundaje A, Kheradpour P, Pauli F, Batzoglou S, Bernstein BE, Bickel P, Brown JB, Cayting P, et al. (2012). ChIP-seq guidelines and practices of the ENCODE and modENCODE consortia. *Genome Res* 22, 1813–1831. [PubMed: 22955991]
- Li H, Handsaker B, Wysoker A, Fennell T, Ruan J, Homer N, Marth G, Abecasis G, Durbin R, and Subgroup, 1000 Genome Project Data Processing (2009). The Sequence Alignment/Map format and SAMtools. *Bioinform Oxf Engl* 25, 2078–2079.
- Martin M (2011). Cutadapt removes adapter sequences from high-throughput sequencing reads. *Embnet J* 17, 10–12.
- Moorthy SD, Davidson S, Shchuka VM, Singh G, Malek-Gilani N, Langroudi L, Martchenko A, So V, Macpherson NN, and Mitchell JA (2016). Enhancers and super-enhancers have an equivalent regulatory role in embryonic stem cells through regulation of single or multiple genes. *Genome Res* 27, 246–258. [PubMed: 27895109]
- Mu W, Starmer J, Yee D, and Magnuson T (2018). EZH2 variants differentially regulate polycomb repressive complex 2 in histone methylation and cell differentiation. *Epigenet Chromatin* 11, 71.
- Ong C-T, and Corces VG (2011). Enhancer function: new insights into the regulation of tissue-specific gene expression. *Nat Rev Genet* 12, 283–293. [PubMed: 21358745]
- Park PJ (2009). ChIP-seq: advantages and challenges of a maturing technology. *Nat Rev Genet* 10, 669–680. [PubMed: 19736561]
- Quinlan AR, and Hall IM (2010). BEDTools: a flexible suite of utilities for comparing genomic features. *Bioinform Oxf Engl* 26, 841–842.
- Skene PJ, and Henikoff S (2017). An efficient targeted nuclease strategy for high-resolution mapping of DNA binding sites. *Elife* 6, e21856. [PubMed: 28079019]
- Stuart T, Butler A, Hoffman P, Hafemeister C, Papalexi E, Mauck WM, Hao Y, Stoeckius M, Smibert P, and Satija R (2019). Comprehensive Integration of Single-Cell Data. *Cell* 177, 1888–1902.e21. [PubMed: 31178118]
- Wang Q, Xiong H, Ai S, Yu X, Liu Y, Zhang J, and He A (2019). CoBATCH for High-Throughput Single-Cell Epigenomic Profiling. *Mol Cell* 76, 206–216.e7. [PubMed: 31471188]
- Weiner A, Lara-Astiaso D, Krupalnik V, Gafni O, David E, Winter DR, Hanna JH, and Amit I (2016). Co-ChIP enables genome-wide mapping of histone mark co-occurrence at single-molecule resolution. *Nat Biotechnol* 34, 953–961. [PubMed: 27454738]
- Wu SJ, Furlan SN, Mihalas AB, Kaya-Okur HS, Feroze AH, Emerson SN, Zheng Y, Carson K, Cimino PJ, Keene CD, et al. (2021). Single-cell CUT&Tag analysis of chromatin modifications in differentiation and tumor progression. *Nat Biotechnol* 39, 819–824. [PubMed: 33846646]
- Xiong H, Luo Y, Wang Q, Yu X, and He A (2021). Single-cell joint detection of chromatin occupancy and transcriptome enables higher-dimensional epigenomic reconstructions. *Nat Methods* 18, 652–660. [PubMed: 33958790]
- Zhang T, Wei G, Millard CJ, Fischer R, Konietzny R, Kessler BM, Schwabe JWR, and Brockdorff N (2018). A variant NuRD complex containing PWWP2A/B excludes MBD2/3 to regulate transcription at active genes. *Nat Commun* 9, 3798. [PubMed: 30228260]
- Zhang Y, Liu T, Meyer CA, Eeckhoutte J, Johnson DS, Bernstein BE, Nusbaum C, Myers RM, Brown M, Li W, et al. (2008). Model-based analysis of ChIP-Seq (MACS). *Genome Biol* 9, R137. [PubMed: 18798982]
- Zhu C, Zhang Y, Li YE, Lucero J, Behrens MM, and Ren B (2021). Joint profiling of histone modifications and transcriptome in single cells from mouse brain. *Nat Methods* 18, 283–292. [PubMed: 33589836]

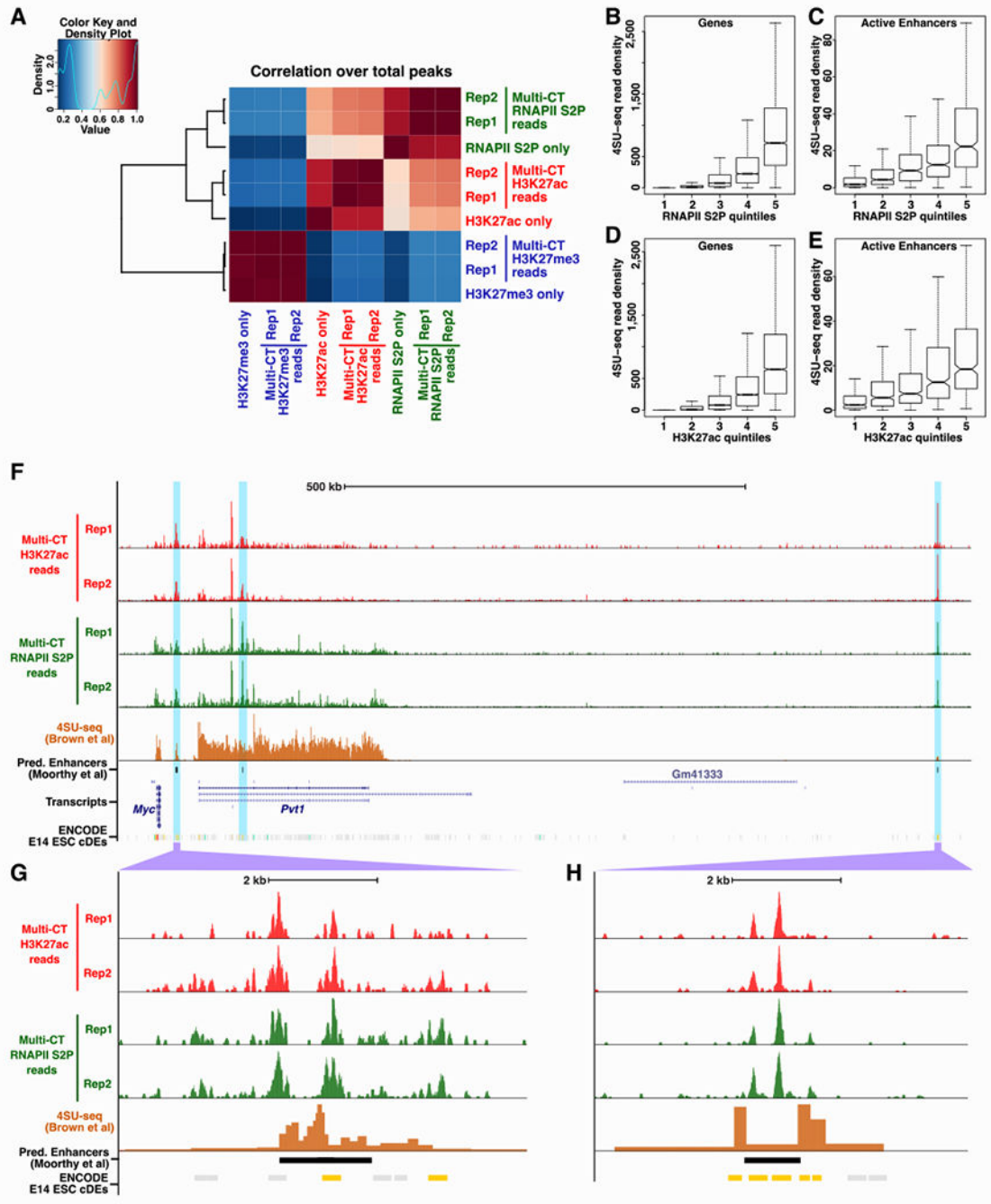
**Highlights**

- Multi-CUT&Tag is a method for profiling multiple epitopes in the same cells
- Different chromatin proteins can be mapped simultaneously in a single experiment
- Co-association of chromatin proteins in the same cell can be directly detected
- scMulti-CUT&Tag reveals cell type-specific chromatin domains from mixed populations





**Figure 1: Simultaneous profiling of multiple chromatin proteins using multi-CUT&Tag.** **A**, Diagrammatic representation of multi-CUT&Tag workflow. **B**, Genomic landscape comparing single Ab CUT&Tag and triple Ab multi-CUT&Tag for H3K27me3, H3K27ac and RNAPII S2P. The shaded regions represent domains with high enrichment of the indicated proteins or histone modifications. **C-E**, Heatmaps depicting enrichment of reads from single Ab CUT&Tag and triple Ab multi-CUT&Tag over the genomic locations of peaks of published ChIP-seq data specific for H3K27me3 (+/-5kb; GSE123174) (C), H3K27ac (+/-2kb; GSE31039) (D) and RNAPII S2P (+/-2kb; GSE112113) (E). **F-H**, Average enrichment of reads from triple Ab multi-CUT&Tag over the peak locations (called from published ChIP-seq data) of H3K27me3 (F), H3K27ac (G) and RNAPII S2P (H). See also Figure S1, Figure S2, and Table S1.



**Figure 2: Specificity of multi-CUT&Tag profiles.**

**A**, Correlation matrix of single and triple Ab multi-CUT&Tag maps. Pearson correlations were calculated using the normalized read counts surrounding total H3K27ac, H3K27me3, and RNAPII S2P peaks from multi-CUT&Tag libraries. **B-E**, Nascent transcription levels, as measured by 4SU-seq (GSE93538) for genes (**B**, **D**) or predicted ESC CREs (**C**, **E**) separated into quintiles based on read densities from multi-CUT&Tag maps of RNAPII S2P (**B**, **C**) or H3K27ac (**D**, **E**). Predicted CREs were taken from a previous study (Moorthy et al., 2016). Data re represented as boxplots with median (dark line), 25<sup>th</sup> and 75<sup>th</sup> percentiles

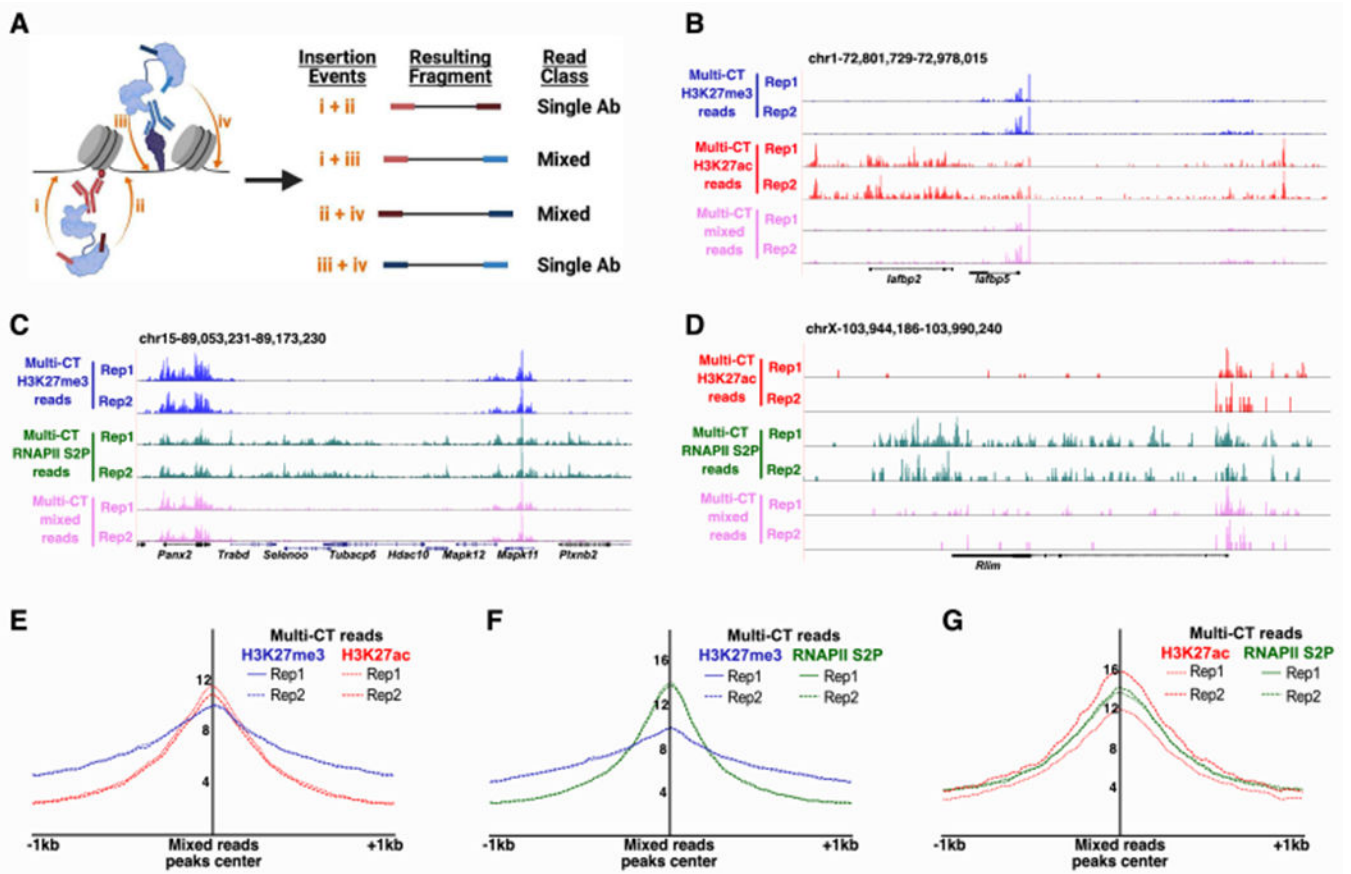
(bottom and top of boxes, respectively), and a maximum of 1.5 times the interquartile range (whiskers) shown. **F**, Browser tracks of multi-CUT&Tag maps of H3K27ac, RNAPII S2P, and 4SU-seq depicting a region downstream of the *Myc* gene enriched for predicted cell type-specific enhancers. **G-H**, Detailed maps of two candidate CREs marked by H3K27ac and RNAPII S2P, that exhibit nascent transcription (4SU-seq) found at many enhancers. ENCODE candidate CREs (cCREs) from E14 ESCs are shown for reference; potential promoter-distal enhancers in this dataset are highlighted in yellow. See also Figure S1 and Figure S2.

Author Manuscript

Author Manuscript

Author Manuscript

Author Manuscript

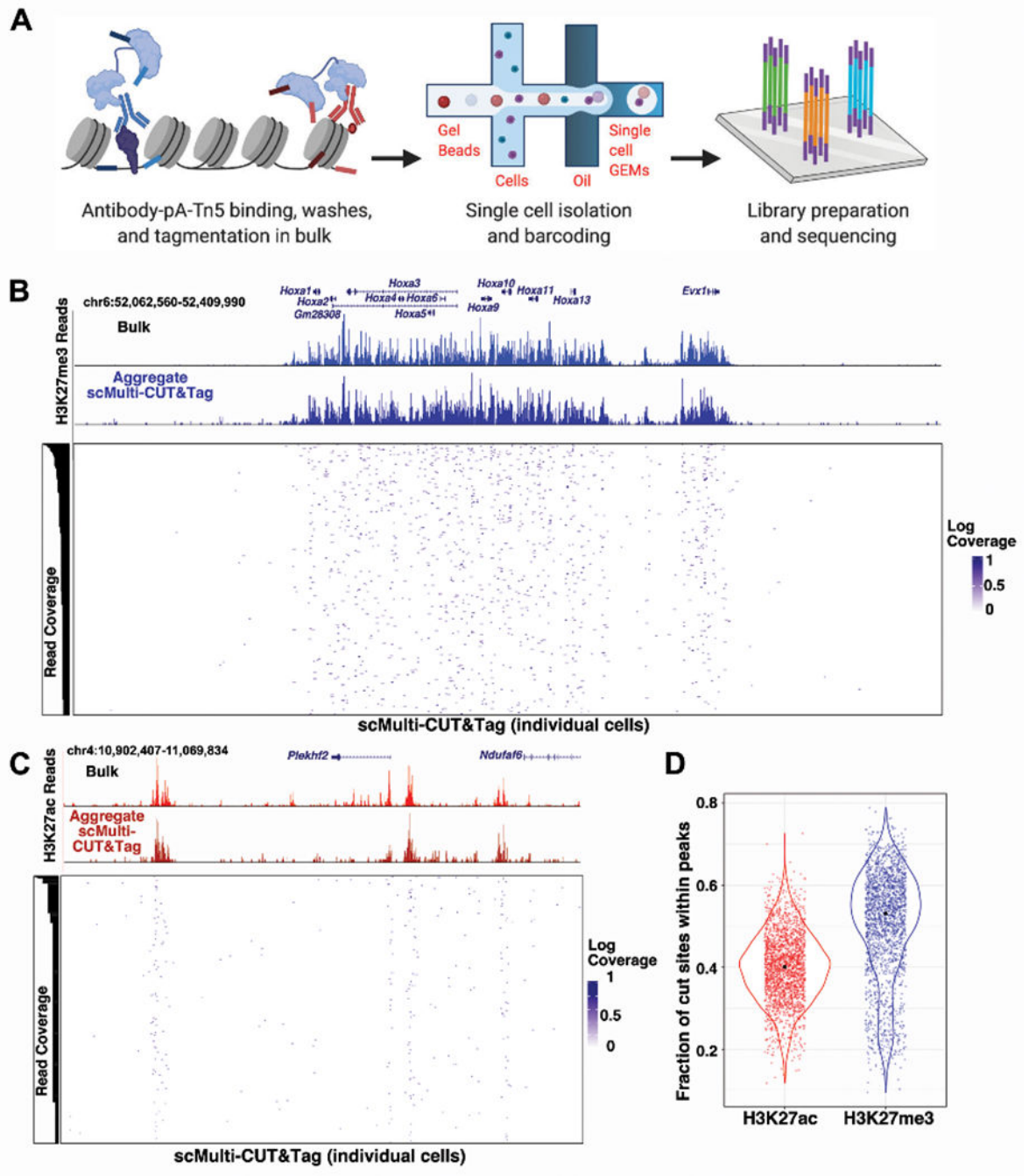


**Figure 3: Co-localization of histone modifications and RNAPII directly detected by multi-CUT&Tag.**

**A**, Schematic representation of homogenous and mixed reads derived from multi-CUT&Tag

**B-D**, Genome browser tracks showing enrichment of homogenous reads (with barcodes for a single Ab on both ends) and mixed reads (one barcode specific to each Ab on either end) from dual Ab multi-CUT&Tag profiles of H3K27me3+H3K27ac (B), H3K27me3+RNAPII S2P (C), and H3K27ac+RNAPII S2P (D). Each track is normalized to the same number of reads to allow direct comparison of homogeneous and mixed read profiles **E-G**, Aggregate enrichment of homogenous reads for each Ab listed over the peaks called from mixed reads in dual Ab multi-CUT&Tag for H3K27me3+H3K27ac (E), H3K27me3+RNAPII S2P (F), and H3K27ac+RNAPII S2P (G). See also Figure S3.





**Figure 4: multi-CUT&Tag profiling in single cells.**

**A**, Diagrammatic representation of scMulti-CUT&Tag approach. **B-C**, Chromatin landscapes showing comparing bulk CUT&Tag maps with scMulti-CUT&Tag maps, both in aggregate over all single cells and individual cells, at regions of enrichment of H3K27me3 (B) and H3K27ac (C). For H3K27me3, the cells with six or more cut sites within the region were shown and for H3K27ac, the cells with at least one cut site within the region were shown. For both Abs, cells were ordered by read coverage within the regions depicted. **D**, Violin plots depicting the normalized cut sites for H3K27me3 and H3K27ac within peaks

specific for specified genomic regions across single cells. Peaks were called from aggregate single-cell datasets for each Ab, as described in STAR Methods. See also Figure S4.

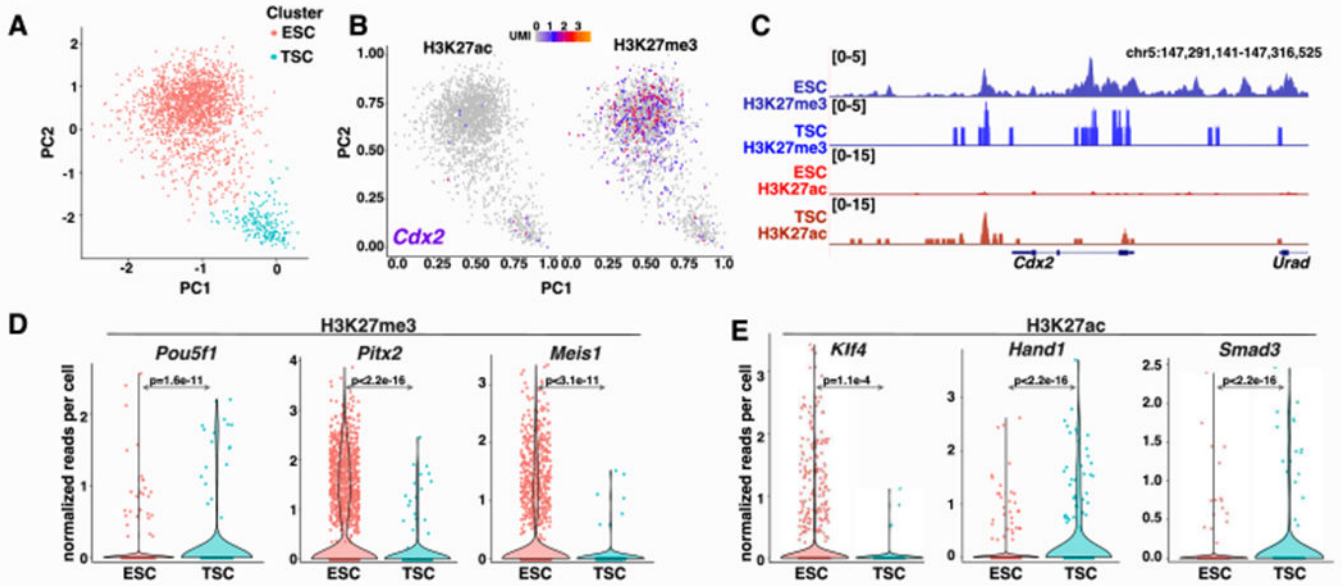
Author Manuscript

Author Manuscript

Author Manuscript

Author Manuscript





**Figure 5: Unbiased clustering of integrated scMulti-CUT&Tag profiles uncovers cell type-specific differences in chromatin architecture.**

**A**, Latent semantic indexing (LSI) plots derived from integrated H3K27ac and H3K27me3 scMulti-CUT&Tag profiles, revealing cell type-specific clusters. **B-C**, LSI projections (**B**) and pseudo-bulk analysis (**C**) of H3K27me3 and H3K27ac enrichment surrounding the TSC gene *Cdx2* within each cell cluster. **D-E**, Violin plots showing mean enrichment of H3K27me3 (**D**) and H3K27ac (**E**) in ESCs (n=1750 cells) and TSCs (n=199 cells) near genes exhibiting cell type-specific enrichment of one or both chromatin marks, as indicated. Two-sided Wilcoxon Rank-Sum Tests were used to test for significance of differences between cell types. See also Figure S5.

## KEY RESOURCES TABLE

REAGENT or RESOURCE	SOURCE	IDENTIFIER
Antibodies		
H3K27me3 Monoclonal Antibody (G.299.10)	Invitrogen	Cat#MA5-11198
Anti-Histone H3 (acetyl K27) antibody	Abcam	Cat#ab4729
Phospho-Rpb1 CTD (Ser2) (E1Z3G) Rabbit mAb	Cell Signaling Technology	Cat#13499
Rabbit IgG	Abcam	Ab37415
Bacterial and virus strains		
BL21 DE3 pLysS bacteria	Novagen	Cat#69451
Biological samples		
Chemicals, peptides, and recombinant proteins		
Dynabeads His-Tag Isolation and Pulldown	Invitrogen	Cat#10103D
Concanavalin A coated magnetic beads	Polysciences	Cat#21-1401
Histidine tagged pA-Tn5	In this study	N/A (produced in Fazzio lab)
Critical commercial assays		
AMPure XP beads	Beckman Coulter	Cat#A63881
Qubit dsDNA HS Assay Kit	Invitrogen	Cat#Q32854
NextSeq 500/550 High Output Kit v2.5 (150 Cycles)	Illumina	Cat#20024906
Chromium Next GEM Single Cell ATAC Reagent Kits v1.1	10X genomics	Cat#CG000209
Deposited data		
Raw and Analyzed data	GEO	GSE171554
Code for sequencing data analysis	Zenodo	DOI: <a href="https://doi.org/10.5281/zenodo.5507375">10.5281/zenodo.5507375</a>
Experimental models: cell lines		
E14 mouse embryonic stem cell line	Panning Lab, UCSF	RRID: CVCL_C320
5-4 mouse trophoblast stem cell line	Kalantry Lab, University of Michigan	N/A
Experimental models: organisms/strains		

REAGENT or RESOURCE	SOURCE	IDENTIFIER
Oligonucleotides		
See Table S1 for the sequences of DNA oligonucleotides used in multi-CUT&Tag experiments	In this study	N/A
Recombinant DNA		
Software and algorithms		
novoBarcode	Novocraft	<a href="http://www.novocraft.com/documentation/novobarcodes/">http://www.novocraft.com/documentation/novobarcodes/</a>
Bowtie 2, version 2.4.1	Johns Hopkins University	<a href="http://bowtie-bio.sourceforge.net/bowtie2/index.shtml">http://bowtie-bio.sourceforge.net/bowtie2/index.shtml</a>
Samtools, version 1.5	SAMtools	<a href="http://samtools.sourceforge.net/">http://samtools.sourceforge.net/</a>
Picard	Broad Institute	<a href="http://broadinstitute.github.io/picard/">http://broadinstitute.github.io/picard/</a>
HOMER software suite, v4.11	UCSD	<a href="http://homer.ucsd.edu/homer/">http://homer.ucsd.edu/homer/</a>
cellranger-atac, version 1.1.0	10X genomics	<a href="https://support.10xgenomics.com/single-cell-atac/software/release-notes/1-1">https://support.10xgenomics.com/single-cell-atac/software/release-notes/1-1</a>
Cutadapt, version 1.9	Martin, 2011	<a href="https://cutadapt.readthedocs.io/en/v1.9/guide.html">https://cutadapt.readthedocs.io/en/v1.9/guide.html</a>
Bedtools, version 2.28.0	Quinlan and Hall, 2010	<a href="https://bedtools.readthedocs.io/en/latest/content/installation.html">https://bedtools.readthedocs.io/en/latest/content/installation.html</a>
Macs2, version 1.4.2	Zhang et al., 2008	<a href="https://bioweb.pasteur.fr/packages/pack@macs@1.4.2">https://bioweb.pasteur.fr/packages/pack@macs@1.4.2</a>
Seurat, version 3.1.4	Stuart et al., 2019	<a href="https://github.com/satijalab/seurat/">https://github.com/satijalab/seurat/</a>
Other		
Detailed protocol for the preparation of multi-CUT&Tag libraries	In this study	See Supplemental Information