

RESEARCH

Open Access



Knocking down claudin receptors leads to a decrease in prostate cancer cell migration, cell growth, cell viability and clonogenic cell survival

Qiang Liu^{1,2†}, Hongliang Shen^{1,3†}, Andrew Naguib¹, Robert M. Weiss¹ and Darryl T. Martin^{1*}

Abstract

Prostate cancer is the most common solid organ malignancy in the United States, and has the highest probability of all cancers in becoming invasive. New molecular targets are needed to define and impede the growth and progression of advanced prostate cancers. Claudins (Cldns) are transmembrane proteins that regulate paracellular permeability and cell polarity, and their levels are elevated in many human cancers such as breast, ovarian, pancreatic, and prostatic cancers. Previously, we found that Cldn3 and Cldn4 are expressed in aggressive high-grade human prostate cancer specimens. We and others have shown that there are higher levels of Cldn3 and Cldn4 in metastatic human prostate cancer cells than in normal human prostate cells. The result of targeting Cldn3 and Cldn4 expression on the growth and viability of prostate cancer cells has not been elucidated. Human prostate cancer PC3 and LNCaP cells were transfected with Cldn3 or -4 small interfering RNAs (siRNAs). Cldn3/Cldn4 siRNA treatment resulted in a greater than 85% decrease in the protein levels of Cldn3 and Cldn4, which was accompanied by a 30–40% decrease in prostate cancer cell growth and a 60–65% reduction in cell viability. There was decreased cell migration with Cldn3 and Cldn4 siRNA in both PC3 and LNCaP cells and a 60–75% decrease in the number of clones when treated with siCldn3 or siCldn4 compared to control. Knocking down Cldn3/Cldn4 affects prostate cancer cell growth and survival and may have therapeutic implications.

Keywords: Cell receptors, Molecular targeted therapy, Cancer cell survival, Cancer cell migration, Claudin-3 (Cldn3), Claudin-4 (Cldn4)

Introduction

Prostate cancer is the most common solid organ malignancy in the US. There is an estimated 248,530 new prostate cancer cases and over 34,000 deaths expected for 2021 [1]. Of all cancers that occur in men, prostate cancer has the highest probability of becoming invasive when considering all age groups [1]. Currently, there are

no curative treatment options for late-stage prostate cancer, and death becomes inevitable. Thus, new treatment targets need to be identified to eliminate therapeutic failure and to improve prostate cancer patient outcomes.

Tight junction proteins are directly involved in the barrier and adhesive function between adjacent cells and tight junctions aid in the regulation in paracellular permeability and cell polarity [2–7]. Abnormal tight junction proteins and function as well as aberrant cell polarity are noted in cancer cells [8–12]. Additionally, tight junction proteins also are deemed to be implicated in tumorigenesis and metastasis. Claudins are transmembrane proteins that belong to a family of tight

*Correspondence: darryl.martin@yale.edu

†Qiang Liu and Hongliang Shen contributed equally to this work.

¹ Department of Urology, Yale University School of Medicine, New Haven, CT, USA

Full list of author information is available at the end of the article

junction proteins. Claudins have four transmembrane domains, including two short cytoplasmic domains and two extracellular loops [13]. In examining the amino acid composition of the extracellular domains there is much variety between the claudin isoforms. Claudins play a role in embryogenesis and also are found to be altered in many human cancers [7]. Specifically, overexpression of Cldn3 and Cldn4 tight junction proteins promote tumorigenesis in breast, endometrial, gastric, kidney, ovarian, and uterine cancers [11]. In addition, Cldn4 is overexpressed in primary and metastatic prostate cancer, and Cldn3 is strongly expressed in the majority of prostate cancers [14, 15]. Previously, we showed, using human prostate cancer biopsy specimens, that higher levels of CLDN3 and CLDN4 expression are found in intermediate and high-risk prostate cancers compared to low and very low risk prostate cancer specimens [Martin DT, Lee JS, Liu Q, Galiana G, Sprenkle PC, Humphrey PA et al.: Targeting prostate cancer with *clostridium perfringens* enterotoxin functionalized nanoparticles co-encapsulating imaging cargo enhances magnetic resonance imaging specificity, *Submitted*]. Also, we and others have shown that claudin-3 (Cldn3) and claudin-4 (Cldn4) are overexpressed

in prostate cancer cells compared to normal prostate cells [14, 16, 17] [Martin DT, Lee JS, Liu Q, Galiana G, Sprenkle PC, Humphrey PA et al.: Targeting prostate cancer with *clostridium perfringens* enterotoxin functionalized nanoparticles co-encapsulating imaging cargo enhances magnetic resonance imaging specificity, *Submitted*].

Targeting Cldn expression has been shown to be effective in inhibiting tumor growth in several tumor models. For example, silencing Cldn3 using small interfering RNA (siRNA) resulted in suppression of ovarian xenograft tumor growth and metastasis [18]. Similarly, blocking Cldn4 using a monoclonal antibody in ovarian and pancreatic xenograft mouse models inhibited tumor growth [19]. Furthermore, exposing *Clostridium perfringens* enterotoxin (CPE), a potent cytolytic toxin, to its natural receptors Cldn3 and Cldn4 has been shown to induce CPE-mediated cytotoxicity in prostate cancer cells and ovarian tumors [17, 20, 21].

We hypothesize that Cldn3 or Cldn4 may be potential therapeutic targets for the management of prostate cancer. In this investigation, we examined Cldn expression in human prostate cancer cells. Although Cldn3 and Cldn4 have been shown to be expressed in prostate

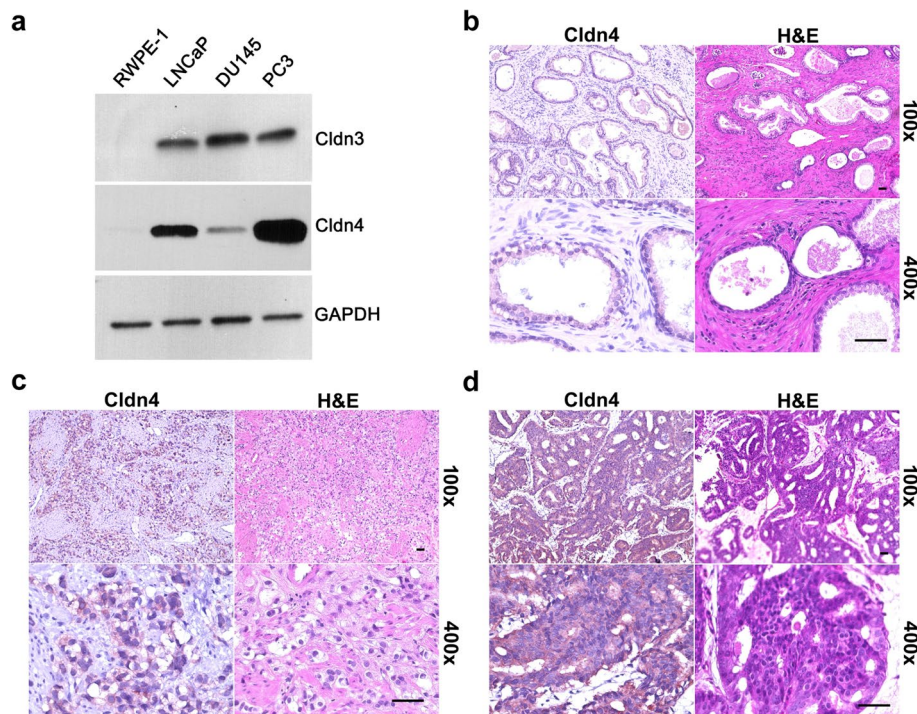


Fig. 1 Cldn expression in human prostate cells and tissue specimens. **a** The levels of Cldn3 and Cldn4 were higher in metastatic human prostate cancer (PC3, LNCaP, and DU145) cells compared to benign prostate (RWPE-1) cells. Immunohistochemistry was performed on **(b)** human benign prostatic hyperplasia specimen, **(c)** human high-grade prostate cancer specimen 1 (Gleason grade group 4+), and **(d)** human high-grade prostate cancer specimen 2 (Gleason grade group 4+) for Cldn4 (brown). Representative H&E and IHC staining are shown at 100x and 400x. Scale bars = 50 μm

cancers, and was the focus of CPE intervention, targeting Cldn3 and Cldn4 expression in relation to prostate cancer cell survival rates has not been investigated. Herein, we target Cldn3 and Cldn4 expression in prostate cancer cells using Cldn3 and Cldn4 siRNAs and assess its impact on cell growth, migration, viability, and clonogenic survival.

Results

Claudin expression in human prostate cancer and normal prostate cells

Western blots show that Cldn3 and Cldn4 levels are higher in metastatic prostate cancer cells (PC3, LNCaP, and DU145) compared to normal prostate cells (RWPE-1) (Fig. 1a). In addition, we confirmed that Cldn4 is expressed in higher grade prostate cancer specimens compared to benign prostatic hyperplasia specimens (Fig. 1b-d).

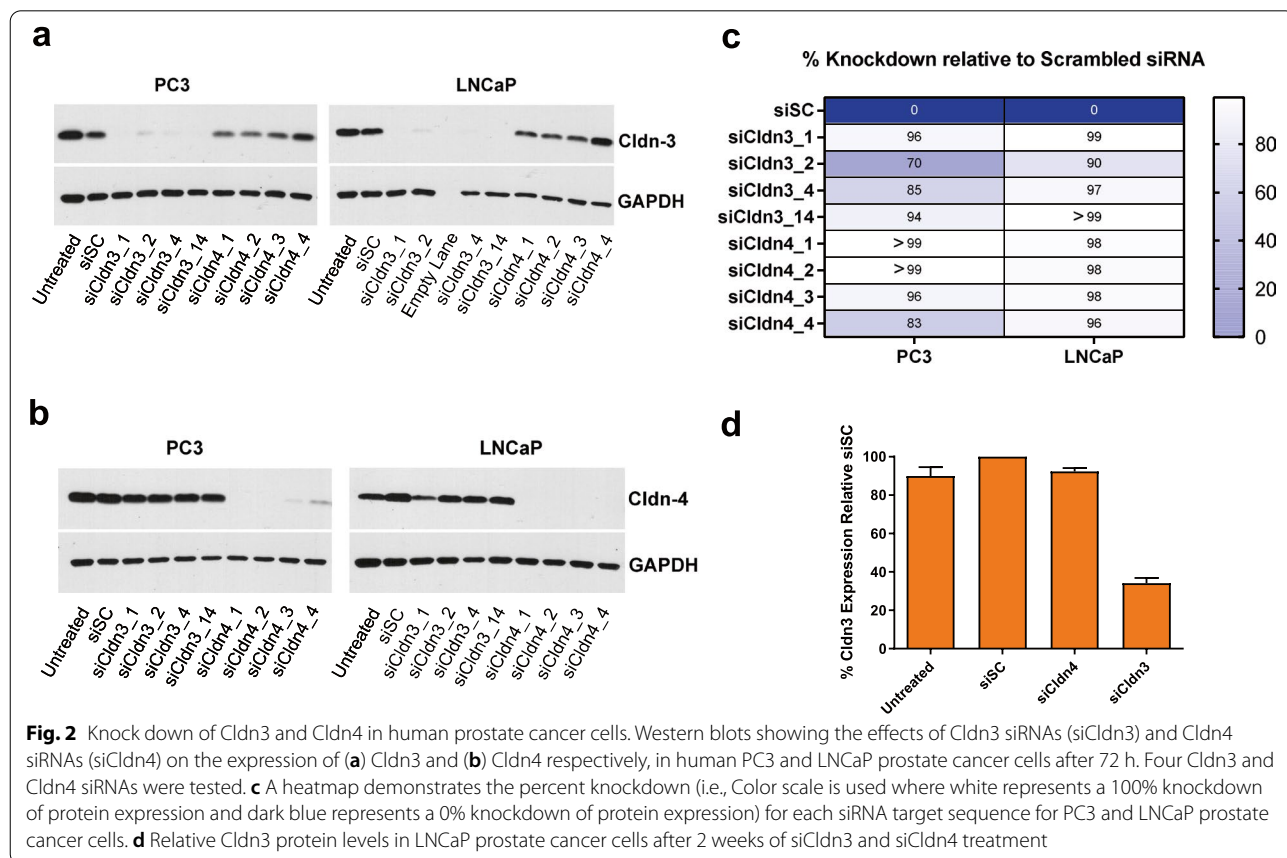
Knocking down Cldn3 and Cldn4 in in vitro human prostate cancer cells

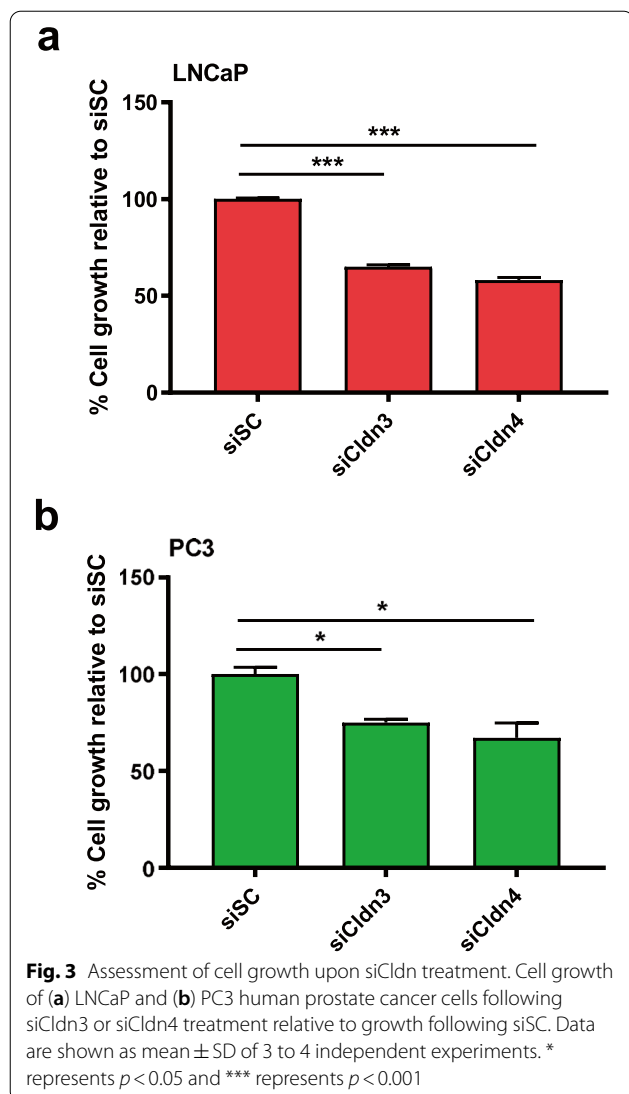
Four siRNAs for Cldn3 (siCldn 3_1, siCldn 3_2, siCldn 3_4, siCldn 3_14) and for Cldn4 (siCldn 4_1, siCldn 4_2, siCldn 4_3, siCldn 4_4) were examined for their

efficacy in knocking down Cldn3 and Cldn4 levels, respectively. All efficiently knocked down their respective targeted Cldn levels (Fig. 2a, 2b). In examining the protein levels of Cldn3 and Cldn4 after 72 h, we generated a knocked down of greater than or equal to 70% for both PC3 and LNCaP human prostate cancer cells when treated with siCldn3s and siCldn4s (Fig. 2c). Specifically, we generated a Cldn3 knockdown of 85% and 97% for PC3 and LNCaP human prostate cancer cells, respectively, when treated with siCldn3_4 and a Cldn4 knockdown of >99% and 98% for PC3 and LNCaP human prostate cancer cells, respectively, when treated with siCldn4_1. The percent knockdown by these siRNAs was made in comparison to siSC. Based on the knockdown of Cldn3 and Cldn4 using PC3 and LNCaP prostate cancer cells, siCldn3_4 and siCldn4_1 were selected for all subsequent functional studies. In addition, we treated LNCaP prostate cancer cells with siCldn3 and noted a 70% knockdown of Cldn3 expression after 2 weeks (Fig. 2d).

Cell growth is affected by Cldn3 and Cldn4 knockdown

Knocking down Cldn3 and Cldn4 expression appears to be androgen independent as both human





prostate cancer cell lines PC3 (androgen independent) and LNCaP (androgen dependent) had similar growth outcomes. Prostate cancer cell growth was decreased by 35% ($p < 0.001$) and by 42% ($p < 0.001$) for LNCaP cells (Fig. 3a) and by 25% ($p < 0.05$) and by 33% ($p < 0.05$) for PC3 cells (Fig. 3b), upon treatment with siCldn3 and siCldn4, respectively, compared to siSC.

Cell viability is decreased upon siCldn3 and siCldn4 knockdown

Cytotoxicity WST colorimetric assays were performed on LNCaP and PC3 prostate cancer cells exposed to 100 nmol/L of siCldn3 or siCldn4. There was a 63% ($p < 0.0001$) and 66% ($p < 0.001$) decrease in viability for LNCaP cells (Fig. 4a), and a 68% ($p < 0.0001$) and 57% ($p < 0.0001$) decrease in viability for PC3 cells (Fig. 4b),

when treated with siCldn3 or siCldn4, respectively. A crystal violet assay was used to assess prostate cancer cell viability (Fig. 4c).

Clonogenic ability was decreased in prostate cancer cells upon treatment with Cldn3 and Cldn4 siRNA

Knock down of Cldn3 or Cldn4 in LNCaP and PC3 cells significantly decreased long-term clonogenic growth. The clonogenic survival rates decreased by 70% ($p < 0.0001$) and 47% ($p < 0.0001$) for LNCaP colonies (Fig. 5a), and by 81% ($p < 0.0001$) and 73% ($p < 0.0001$) for PC3 colonies (Fig. 5b) when treated with siCldn3 or siCldn4, respectively. Crystal violet staining was performed to visualize the prostate cancer colonies after siCldn3 and siCldn4 treatment (Fig. 5c).

Cell migration decreased after treatment with Cldn3 and Cldn4 siRNA

Cell migration was evaluated in LNCaP and PC3 cells by determining the percent cells covering the scratch after siCldn3 or siCldn4 treatment. We showed a difference in percent scratch coverage at 6 h (8%, 15%), at 12 h (13%, 22%), and at 18 h (37%, 45%) compared to the siSC control in LNCaP cells (Fig. 6a) when treated with siCldn3 or siCldn4, respectively. In PC3 cells the difference in percent cell coverage at 6 h was (17%, 14%), at 12 h (5%, 31%) and at 18 h (6%, 19%) compared to the siSC control when treated with siCldn3 or siCldn4, respectively (Fig. 6b). Both siCldn3 and siCldn4 had a significant inhibitory effect on cell migration of prostate cancer cells.

Discussion

The expression of Cldn3 and Cldn4 is tissue specific and has been described to be up-regulated in ovarian, breast, and prostate cancers [14, 16, 22–24]. Martin et al. found higher levels of CLDN3 and CLDN4 expression in higher-risk human prostate cancer specimens compared to lower risk cancer specimens [Martin DT, Lee JS, Liu Q, Galiana G, Sprenkle PC, Humphrey PA et al.: Targeting prostate cancer with *clostridium perfringens enterotoxin* functionalized nanoparticles co-encapsulating imaging cargo enhances magnetic resonance imaging specificity, Submitted]. The similar expression patterns of Cldn3 and Cldn4 in prostate cancers may suggest a coordinated regulation and raises the possibility for an effective targeted treatment strategy [25]. Furthermore, although the function of Cldn3 and Cldn4 is usually associated with tight junctions in normal tissues, they do not appear to have this role in tumors, suggesting a conceivable role of Cldn3 and Cldn4 in cancer progression [7, 26].

The goal of our study was to examine the differences in Cldn3 and Cldn4 protein levels according to growth

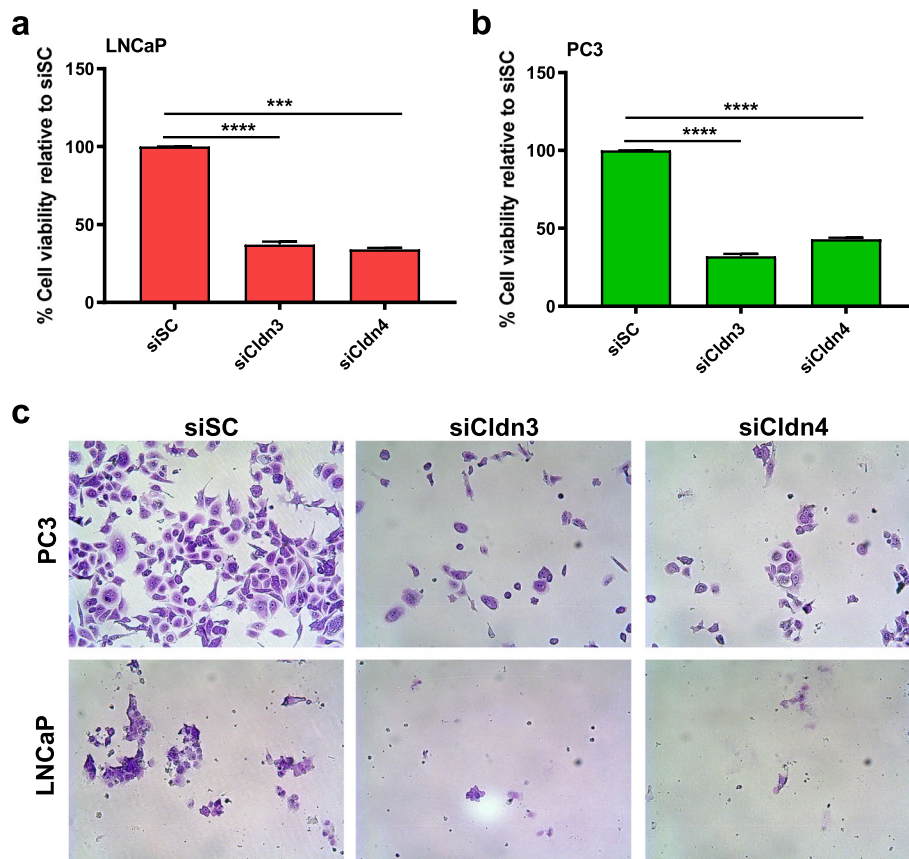


Fig. 4 The effects of knocking down Cldn3 and Cldn4 on cell viability. Cell viability was assessed on human (a) LNCaP or (b) PC3 prostate cancer cells following siCldn3 or siCldn4 treatment. c Crystal violet staining was performed to visualize viable cells. Data are shown as mean \pm SD of 3 to 4 independent experiments. *** represents $p < 0.001$ and **** represents $p < 0.0001$

characteristics of prostate cancer cells. We demonstrated an in vitro tumor-specific claudin effect. We showed that decreasing Cldn expression resulted in a less aggressive cell type characterized by a decrease in cell growth, cell migration, clonogenic cell survival, and cell viability. Similar to our findings in prostate cancer, higher levels of Cldn3 and Cldn4 expression have been observed in aggressive ovarian cancers, than in normal ovarian cells [21]. Huang and colleagues showed that knocking down CLDN3, using siCldn3, reduced tumor growth in a mouse ovarian cancer model [18].

Although, the above reports are consistent with a correlation of elevated Cldn expression levels with increased tumor aggressiveness, this correlation has not been universal and to some extent appears to be tumor specific. In contrast to the findings of Huang et al. showing that knocking down CLDN3 reduced ovarian tumor growth, Shang et al. demonstrated that knocking down Cldn3 and Cldn4 expression in an ovarian cancer

xenograft model led to an increase in tumor growth and metastatic potential [18, 27]. They also demonstrated that knocking down CLDN3 and CLDN4 increased migration and invasion in vitro, and suggested that the deficit of CLDN3 and CLDN4 expression is associated with poor prognosis [27].

In accord with these findings in ovarian carcinoma, Cldn4 expression has been reported to be reduced in the majority of gastric cancers and lower expression levels correlate with poorly-differentiated gastric adenocarcinomas [28]. In addition, the overexpression of Cldn4 in gastric carcinoma was correlated with improved patient prognosis and overexpression inhibited gastric carcinoma cell migration and invasion, although it did not affect cell growth [29]. Also, the loss of Cldn4 expression in a colorectal cancer patient was associated with end stage disease [30].

Herein, we showed that knocking down Cldn3 or Cldn4 expression in prostate cancer cells decreased cell survival. This led us to examining if knocking down of

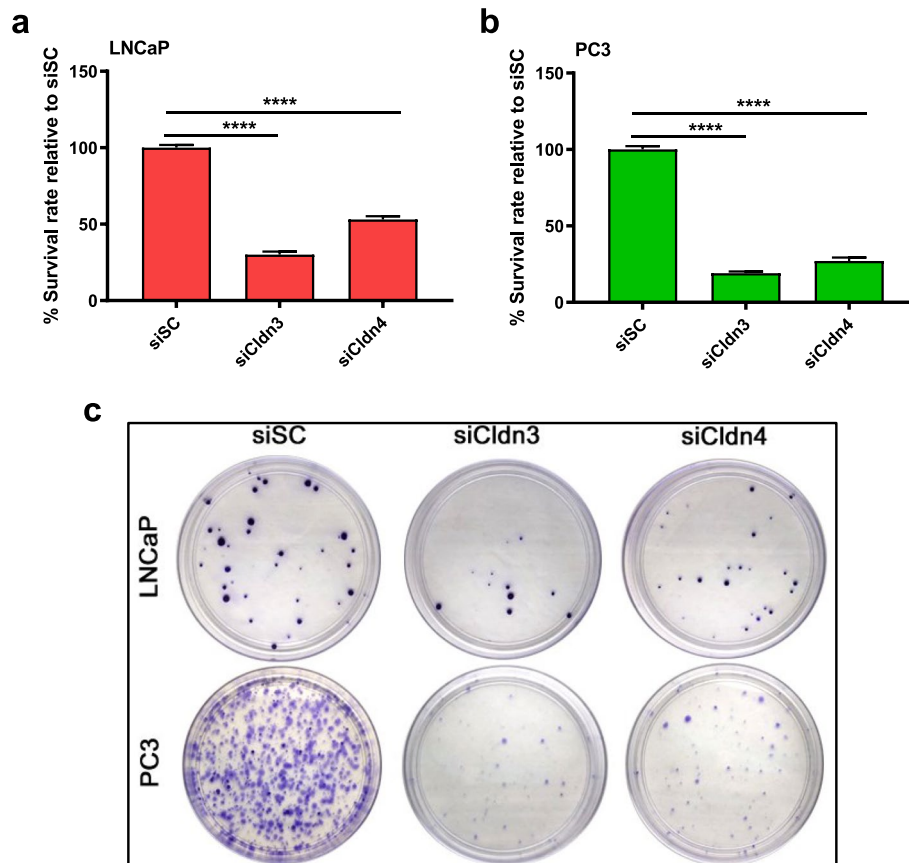


Fig. 5 Clonogenic survival upon siCldn treatment. Treatment with siCldn3 and siCldn4 was performed on human prostate cancer (a) LNCaP and (b) PC3 cells. c Crystal violet staining was performed to visualize colony formation. Data are shown as mean \pm SD of 3 to 4 independent experiments where **** represents $p < 0.0001$

Cldn3 and Cldn4 simultaneously using both siCldn3 and siCldn4 would lead to a synergistic effect. We found that the combination of Cldn3 and Cldn4 knock-down did not provide any further cell survival advantage compared to single treatments (data not shown). These data suggest that there is some overlap or coordinated regulation in Cldn3 and Cldn4 function in prostate cancer cell growth and migration.

Our present study demonstrates that targeting Cldn3 and Cldn4 may be therapeutically useful for managing prostate tumors that have high Cldn3 or Cldn4 expression levels. Furthermore, these receptors may be useful in enhancing prostate cancer detection.

Materials and Methods

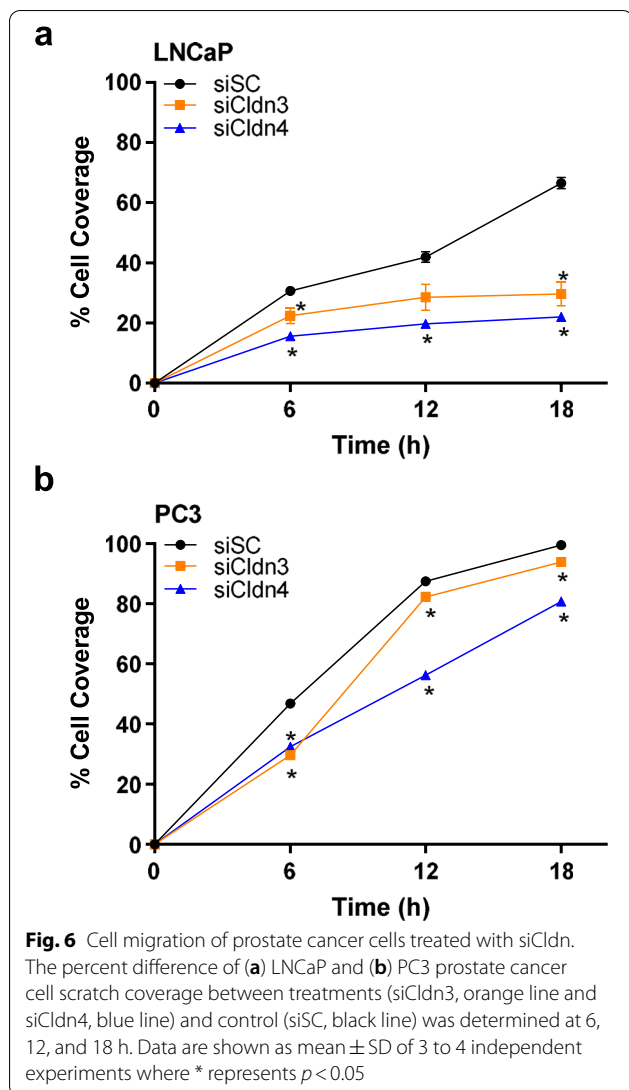
Cells/Tissues

PC3 (CRL-1435), LNCaP (CRL-1740), and DU145 (HTB-81) prostate cancer cells were acquired from the American Type Culture Collection (ATCC). PC3, LNCaP, and

DU145 cells were maintained in F12-K, RPMI-1640, and Eagles Minimum Essential medium, respectively. All prostate cancer cells were supplemented with 10% fetal bovine serum and 1% glutamine. RWPE-1 (CRL-11609) benign prostate cells, immortalized by human papillomavirus 18, were obtained directly from the ATCC and maintained in Keratinocyte Serum Free Medium (Invitrogen) and augmented with 0.05 mg/ml BPE and 5 ng/ml EGF. All cells were maintained as previously described [31]. In addition, all participating patients provided informed consent and were offered enrollment into a specimen repository approved by the Institutional Review Board at Yale University.

siRNA treatment

Human prostate cancer LNCaP and PC3 cells which were transfected with claudin-3 siRNA (siCldn3), claudin-4 siRNA (siCldn4), or scrambled control siRNA (siSC) were used as previously described [31]. The



siCldn3 target sequence (siCldn3_4) was: 5'-GGUCGG CCAACACCAUUAU -3' (sense) and the siCldn4 target sequence (siCldn4_1) was: 5'-GGCUACAGGUAUUGG GCAU -3' (sense). We used a negative control, scrambled/nonsense siRNA (siSC) sequence: 5'-AACGUA CGCGGAAUACUUCGA-3' (Dharmacon), which demonstrated the specificity of our Cldn siRNA sequences. After 72 h, the prostate cancer cells were evaluated for cell growth, viability, migration, and for clonogenic survival. In addition, protein expression was assessed at 72 h and 2 weeks.

Western blotting

Western blot was performed as previously described [31]. Briefly, a radioimmunoprecipitation assay (Cell Signaling Technology) enhanced with cComplete™ protease

inhibitor cocktail (Roche Applied Science), 1 mM sodium fluoride, 2 μ g/ml aprotinin, and 1 mM phenylmethylsulfonyl fluoride was used to lyse the prostate cells. Quantification of protein was assessed by a Bradford assay. Primary antibodies, such as Cldn3 and Cldn4 (Novus), and secondary antibodies, such as anti-mouse and anti-rabbit (Cell Signaling Technology), were used. Protein signal was detected using Chemiluminescence (Thermo Scientific, Rockford IL).

Cell growth assay

Prostate cancer cells were treated with siCldn3, siCldn4, or siSC. They were plated in a 6-well plate at a density of 1.5×10^4 cells per well. After 72 h, cells were stained with 0.4% trypan blue (Gibco, Life Technology), and then using a TC10 cell counter (Bio-Rad), were counted.

Cytotoxicity assay

Human prostate cancer cells were plated in a 96-well plate at a density of 5000 cells per well. They were treated with siCldn3, siCldn4, or siSC. After 72 h, cell viability was measured (at 450 nm) using a WST tetrazolium reagent with the appropriate controls including a background control. The assay was performed following the manufacturer's instructions (Clontech Laboratories, CA). Origin Lab Data Analysis Software was used to measure the % inhibition of cell viability compared to control (siSC).

Crystal violet staining

Human prostate cancer cells were treated with siCldn3, siCldn4, or siSC. A 96 well plate was used and 5000 cells were plated per well. After 48 h, cells were fixed with ice cold methanol before being stained with 0.5% crystal violet dye [32]. Prostate cancer cells were washed with deionized water. Plates were then dried and photographed.

Clonogenic survival

PC3 and LNCaP human prostate cancer cells were treated with siCldn3 or siCldn4 for 72 h and then plated at 18 viable cells per cm^2 . Colonies were formed after 3 weeks and then fixed with 4% paraformaldehyde. At this point, colonies were stained with crystal violet dye and washed with deionized water. Cell clumps were considered colonies if they were larger than or equal to fifty cells. Colonies were imaged and counted [33]. The effectiveness of the employed agents on cell survival was determined by using the survival rate calculation as previously described [31].

Migration assay

LNCaP and PC3 human prostate cancer cells were treated with siCldn3, siCldn4, or siSC (scrambled control) for 48 h. Cells were seeded in triplicate in culture medium containing 1% FBS in a 24-well plate. Cell confluency was reached after 24 h. A scratch was made in the confluent monolayer of prostate cancer cells. Cells that migrated into the scratch area were counted and quantified at 6, 12, and 18 h [33].

Statistics

Student's t-test and repeated-measures ANOVA analysis were used as part of the statistical analysis. All statistical tests were two-sided. Statistical significance was achieved at $p < 0.05$. Statistical analysis was carried out using GraphPad Prism 8.0. Results are presented as mean \pm SD in which values of significance are shown as *, $p < 0.05$; **, $p < 0.01$; ***, $p < 0.001$; and ****, $p < 0.0001$ unless otherwise indicated.

Abbreviations

ATCC: American Type Culture Collection; BPH: Benign Prostatic Hyperplasia; Cldn3: Claudin-3; Cldn4: Claudin-4; CPE: *Clostridium perfringens* enterotoxin; siCldn3: Claudin-3 siRNA; siCldn4: Claudin-4 siRNA; siRNA: Small interfering RNA; siSC: Scrambled siRNA.

Code availability

N/A

Authors' contributions

Qiang Liu: Methodology, Investigation, Formal analysis, Writing—original draft, and Visualization. Hongliang Shen: Methodology, Investigation, Formal analysis, Writing—original draft, and Visualization. Robert M. Weiss: Conceptualization, Methodology, Formal analysis, Writing (review and editing). Andrew Naguib: Methodology, Investigation, Formal analysis, and Writing (review and editing). Darryl T. Martin: Conceptualization, Methodology, Investigation, Formal analysis, Writing (review and editing), Visualization, Supervision, and Funding acquisition. All authors read and approved the final manuscript.

Funding

This work was supported by the Office of the Assistant Secretary of Defense for Health Affairs through the Prostate Cancer Research Program under Award No. W81XWH-14-1-0487. The opinions, interpretations, conclusions, and recommendations are those of the author and are not necessarily endorsed by the Department of Defense.

Availability of data and materials

Listed in manuscript.

Declarations

Ethics approval

All participating patients provided informed consent and were offered enrollment into a specimen repository approved by the Institutional Review Board at Yale University.

Consent for publication

N/A.

Competing interests

The authors declare no conflicts of interest.

Author details

¹Department of Urology, Yale University School of Medicine, New Haven, CT, USA. ²Department of Urology, Renji Hospital Affiliated To Shanghai Jiao Tong University School of Medicine, Shanghai, China. ³Department of Urology, Beijing Friendship Hospital, Capital Medical University, Beijing, China.

Received: 24 March 2021 Accepted: 1 September 2021

Published online: 10 October 2021

References

1. Siegel RL, Miller KD, Fuchs HE, Jemal A. Cancer Statistics, 2021. *CA Cancer J Clin*. 2021;71:7–33. <https://doi.org/10.3322/caac.21654>.
2. Turksen K. Wasted salts and wasted bodies: new insight into the role of claudin 7 in the kidney. *Am J Physiol Renal Physiol*. 2010;298:F22–3. <https://doi.org/10.1152/ajprenal.00594.2009>.
3. Daugherty BL, Mateescu M, Patel AS, Wade K, Kimura S, Gonzales LW, et al. Developmental regulation of claudin localization by fetal alveolar epithelial cells. *Am J Physiol Lung Cell Mol Physiol*. 2004;287:L1266–73. <https://doi.org/10.1152/ajplung.00423.2003>.
4. Krause G, Winkler L, Mueller SL, Haseloff RF, Piontek J, Blasig IE. Structure and function of claudins. *Biochim Biophys Acta*. 2008;1778:631–45. <https://doi.org/10.1016/j.bbame.2007.10.018>.
5. Gupta IR, Ryan AK. Claudins: unlocking the code to tight junction function during embryogenesis and in disease. *Clin Genet*. 2010;77:314–25. <https://doi.org/10.1111/j.1399-0004.2010.01397.x>.
6. Kubota K, Furuse M, Sasaki H, Sonoda N, Fujita K, Nagafuchi A, et al. Ca(2+)-independent cell-adhesion activity of claudins, a family of integral membrane proteins localized at tight junctions. *Curr Biol*. 1999;9:1035–8. [https://doi.org/10.1016/s0960-9822\(99\)80452-7](https://doi.org/10.1016/s0960-9822(99)80452-7).
7. Morin PJ. Claudin proteins in human cancer: promising new targets for diagnosis and therapy. *Cancer Res*. 2005;65:9603–6. <https://doi.org/10.1158/0008-5472.CAN-05-2782>.
8. Chen Y, Lu Q, Schneeberger EE, Goodenough DA. Restoration of tight junction structure and barrier function by down-regulation of the mitogen-activated protein kinase pathway in ras-transformed Madin-Darby canine kidney cells. *Mol Biol Cell*. 2000;11:849–62. <https://doi.org/10.1091/mbc.11.3.849>.
9. Li D, Mrsny RJ. Oncogenic Raf-1 disrupts epithelial tight junctions via downregulation of occludin. *J Cell Biol*. 2000;148:791–800. <https://doi.org/10.1083/jcb.148.4.791>.
10. Tobioka H, Isomura H, Kokai Y, Sawada N. Polarized distribution of carcinoembryonic antigen is associated with a tight junction molecule in human colorectal adenocarcinoma. *J Pathol*. 2002;198:207–12. <https://doi.org/10.1002/path.1201>.
11. Leech AO, Cruz RG, Hill AD, Hopkins AM. Paradigms lost—an emerging role for over-expression of tight junction adhesion proteins in cancer pathogenesis. *Ann Transl Med*. 2015;3:184. <https://doi.org/10.3978/j.issn.2305-5839.2015.08.01>.
12. Dhawan P, Singh AB, Deane NG, No Y, Shiou SR, Schmidt C, et al. Claudin-1 regulates cellular transformation and metastatic behavior in colon cancer. *J Clin Invest*. 2005;115:1765–76. <https://doi.org/10.1172/JCI24543>.
13. Singh AB, Sharma A, Dhawan P. Claudin family of proteins and cancer: an overview. *J Oncol*. 2010;2010:541957. <https://doi.org/10.1155/2010/541957>.
14. Landers KA, Samarasinghe H, Teng L, Buck M, Burger MJ, Scells B, et al. Identification of claudin-4 as a marker highly overexpressed in both primary and metastatic prostate cancer. *Br J Cancer*. 2008;99:491–501. <https://doi.org/10.1038/sj.bjc.6604486>.
15. Bartholow TL, Chandran UR, Becich MJ, Parwani AV. Immunohistochemical profiles of claudin-3 in primary and metastatic prostatic adenocarcinoma. *Diagn Pathol*. 2011;6:12. <https://doi.org/10.1186/1746-1596-6-12>.
16. Long H, Crean CD, Lee WH, Cummings OW, Gabig TG. Expression of clostridium perfringens enterotoxin receptors claudin-3 and claudin-4 in prostate cancer epithelium. *Cancer Res*. 2001;61:7878–81.
17. Maeda T, Murata M, Chiba H, Takasawa A, Tanaka S, Kojima T, et al. Claudin-4-targeted therapy using Clostridium perfringens enterotoxin for prostate cancer. *Prostate*. 2012;72:351–60. <https://doi.org/10.1002/pros.21436>.
18. Huang YH, Bao Y, Peng W, Goldberg M, Love K, Bumcrot DA, et al. Claudin-3 gene silencing with siRNA suppresses ovarian tumor growth and

- metastasis. *Proc Natl Acad Sci U S A*. 2009;106:3426–30. <https://doi.org/10.1073/pnas.0813348106>.
19. Suzuki M, Kato-Nakano M, Kawamoto S, Furuya A, Abe Y, Misaka H, et al. Therapeutic antitumor efficacy of monoclonal antibody against Claudin-4 for pancreatic and ovarian cancers. *Cancer Sci*. 2009;100:1623–30. <https://doi.org/10.1111/j.1349-7006.2009.01239.x>.
 20. English DP, Santin AD. Claudins overexpression in ovarian cancer: potential targets for Clostridium Perfringens Enterotoxin (CPE) based diagnosis and therapy. *Int J Mol Sci*. 2013;14:10412–37. <https://doi.org/10.3390/ijms140510412>.
 21. Santin AD, Cane S, Bellone S, Palmieri M, Siegel ER, Thomas M, et al. Treatment of chemotherapy-resistant human ovarian cancer xenografts in C.B-17/SCID mice by intraperitoneal administration of Clostridium perfringens enterotoxin. *Cancer Res*. 2005;65:4334–42. doi: <https://doi.org/10.1158/0008-5472.CAN-04-3472>.
 22. Hough CD, Sherman-Baust CA, Pizer ES, Montz FJ, Im DD, Rosenshein NB, et al. Large-scale serial analysis of gene expression reveals genes differentially expressed in ovarian cancer. *Cancer Res*. 2000;60:6281–7.
 23. Santin AD, Zhan F, Bellone S, Palmieri M, Cane S, Bignotti E, et al. Gene expression profiles in primary ovarian serous papillary tumors and normal ovarian epithelium: identification of candidate molecular markers for ovarian cancer diagnosis and therapy. *Int J Cancer*. 2004;112:14–25. <https://doi.org/10.1002/ijc.20408>.
 24. Kominsky SL, Vali M, Korz D, Gabig TG, Weitzman SA, Argani P, et al. Clostridium perfringens enterotoxin elicits rapid and specific cytolysis of breast carcinoma cells mediated through tight junction proteins claudin 3 and 4. *Am J Pathol*. 2004;164:1627–33. [https://doi.org/10.1016/S0002-9440\(10\)63721-2](https://doi.org/10.1016/S0002-9440(10)63721-2).
 25. Hewitt KJ, Agarwal R, Morin PJ. The claudin gene family: expression in normal and neoplastic tissues. *BMC Cancer*. 2006;6:186. <https://doi.org/10.1186/1471-2407-6-186>.
 26. Rangel LB, Agarwal R, D'souza T, Pizer ES, Alo PL, Lancaster WD, et al. Tight junction proteins claudin-3 and claudin-4 are frequently overexpressed in ovarian cancer but not in ovarian cystadenomas. *Clin Cancer Res*. 2003;9:2567–75.
 27. Shang X, Lin X, Alvarez E, Manorek G, Howell SB. Tight junction proteins claudin-3 and claudin-4 control tumor growth and metastases. *Neoplasia*. 2012;14:974–85. <https://doi.org/10.1593/neo.12942>.
 28. Lee SK, Moon J, Park SW, Song SY, Chung JB, Kang JK. Loss of the tight junction protein claudin 4 correlates with histological growth-pattern and differentiation in advanced gastric adenocarcinoma. *Oncol Rep*. 2005;13:193–9.
 29. Kwon MJ, Kim SH, Jeong HM, Jung HS, Kim SS, Lee JE, et al. Claudin-4 overexpression is associated with epigenetic derepression in gastric carcinoma. *Lab Invest*. 2011;91:1652–67. <https://doi.org/10.1038/labinvest.2011.117>.
 30. Suren D, Yildirim M, Kaya V, Alikanoglu AS, Bulbul N, Yildiz M, et al. Loss of tight junction proteins (Claudin 1, 4, and 7) correlates with aggressive behavior in colorectal carcinoma. *Med Sci Monit*. 2014;20:1255–62. <https://doi.org/10.12659/MSM.890598>.
 31. Martin DT, Shen H, Steinbach-Rankins JM, Zhu X, Johnson KK, Syed J, et al. Glycoprotein-130 expression is associated with aggressive bladder cancer and is a potential therapeutic target. *Mol Cancer Ther*. 2019;18:413–20. <https://doi.org/10.1158/1535-7163.MCT-17-1079>.
 32. Cheong JK, Nguyen TH, Wang H, Tan P, Voorhoeve PM, Lee SH, et al. IC261 induces cell cycle arrest and apoptosis of human cancer cells via CK1delta/varepsilon and Wnt/beta-catenin independent inhibition of mitotic spindle formation. *Oncogene*. 2011;30:2558–69. <https://doi.org/10.1038/onc.2010.627>.
 33. Li X, He S, Tian Y, Weiss RM, Martin DT. Synergistic inhibition of GP130 and ERK signaling blocks chemoresistant bladder cancer cell growth. *Cell Signal*. 2019;63: 109381. <https://doi.org/10.1016/j.cellsig.2019.109381>.

Publisher's Note

Springer Nature remains neutral with regard to jurisdictional claims in published maps and institutional affiliations.