

A Homolog of Voltage-Gated Ca^{2+} Channels Stimulated by Depletion of Secretory Ca^{2+} in Yeast

EMILY G. LOCKE, MYRIAM BONILLA, LINDA LIANG, YOKO TAKITA,
AND KYLE W. CUNNINGHAM*

Department of Biology, Johns Hopkins University, Baltimore, Maryland 21218

Received 10 May 2000/Accepted 16 June 2000

In animal cells, capacitative calcium entry (CCE) mechanisms become activated specifically in response to depletion of calcium ions (Ca^{2+}) from secretory organelles. CCE serves to replenish those organelles and to enhance signaling pathways that respond to elevated free Ca^{2+} concentrations in the cytoplasm. The mechanism of CCE regulation is not understood because few of its essential components have been identified. We show here for the first time that the budding yeast *Saccharomyces cerevisiae* employs a CCE-like mechanism to refill Ca^{2+} stores within the secretory pathway. Mutants lacking Pmr1p, a conserved Ca^{2+} pump in the secretory pathway, exhibit higher rates of Ca^{2+} influx relative to wild-type cells due to the stimulation of a high-affinity Ca^{2+} uptake system. Stimulation of this Ca^{2+} uptake system was blocked in *pmr1* mutants by expression of mammalian SERCA pumps. The high-affinity Ca^{2+} uptake system was also stimulated in wild-type cells overexpressing vacuolar Ca^{2+} transporters that competed with Pmr1p for substrate. A screen for yeast mutants specifically defective in the high-affinity Ca^{2+} uptake system revealed two genes, *CCH1* and *MIDI1*, previously implicated in Ca^{2+} influx in response to mating pheromones. Cch1p and Mid1p were localized to the plasma membrane, coimmunoprecipitated from solubilized membranes, and shown to function together within a single pathway that ensures that adequate levels of Ca^{2+} are supplied to Pmr1p to sustain secretion and growth. Expression of Cch1p and Mid1p was not affected in *pmr1* mutants. The evidence supports the hypothesis that yeast maintains a homeostatic mechanism related to CCE in mammalian cells. The homology between Cch1p and the catalytic subunit of voltage-gated Ca^{2+} channels raises the possibility that in some circumstances CCE in animal cells may involve homologs of Cch1p and a conserved regulatory mechanism.

The secretory compartments of eukaryotic cells require high concentrations of calcium ions (Ca^{2+}) for the activities of numerous enzymes that catalyze the folding, modification, processing, and trafficking of secretory proteins. Typically, Ca^{2+} is pumped from the cytosol directly into the endoplasmic reticulum and related secretory compartments by the ATP-dependent SERCA-type Ca^{2+} pumps. Depending on the inherent leakiness of each compartment to Ca^{2+} , inhibitors of SERCA pumps can lead to depletion of Ca^{2+} in the secretory pathway and a variety of secretory defects. Most cells express Ca^{2+} release channels in the endoplasmic reticulum that can be activated by second messengers during responses to extracellular stimuli. Rapid Ca^{2+} release lowers Ca^{2+} in the endoplasmic reticulum and elevates free Ca^{2+} concentrations in the cytosol ($[\text{Ca}^{2+}]_c$), which then can activate various signaling transduction pathways. Because Ca^{2+} pumps in the plasma membrane (PMCA) compete with SERCA pumps for substrates, $[\text{Ca}^{2+}]_c$ can return to basal levels prior to refilling of secretory compartments. Thus, in the absence of Ca^{2+} influx into the cell, repetitive or continuous activation of Ca^{2+} release channels will lead to only transient elevation of $[\text{Ca}^{2+}]_c$ and sustained depletion of the secretory Ca^{2+} reservoir. To offset the detrimental effects of Ca^{2+} efflux, most cell types employ a regulatory mechanism known as capacitative calcium entry (CCE) which stimulates Ca^{2+} influx specifically in response to depletion of Ca^{2+} from the endoplasmic reticulum (45, 46). Thus, CCE increases the magnitude and duration of

calcium signals and also helps replenish the secretory pathway when signaling ceases. Despite the apparent ubiquity and importance of the CCE mechanism, the molecular mechanisms by which secretory organelles communicate with plasma membrane Ca^{2+} channels remains controversial because the critical luminal, cytoplasmic, and membrane factors have not yet been firmly established in any cell type (see Discussion). Consequently, we sought to develop the budding yeast *Saccharomyces cerevisiae* as a model system for studies of CCE.

Like animal cells, yeast cells employ a compartmentalized secretory system containing numerous homologs of Ca^{2+} -dependent enzymes, including a furin-like protease (Kex2p) in the *trans*-Golgi network (16), mannosidase I (Mns1p) (27), calnexin (Cne1p), UDP-glucose:glucosyltransferase (Kre5p), protein disulfide isomerases (Pdi1p and Eug1p), and BiP (Kar2p) in the endoplasmic reticulum (12, 14, 34, 41, 48, 56, 57). Yeast lacks a true homolog of SERCA-type Ca^{2+} pumps but does express a related secretory pathway Ca^{2+} pump termed Pmr1p, localized predominantly to the Golgi complex (2, 49). Mutants lacking Pmr1p are viable in standard growth media but concentrate only half as much calcium in the endoplasmic reticulum (55) and exhibit a number of phenotypes attributed to secretory Ca^{2+} depletion, such as decreased retention of foreign proteins in the endoplasmic reticulum by the quality control machinery (49) and defects in pro- α -factor processing by Kex2p in the Golgi complex (2). All of these defects can be reversed by elevating Ca^{2+} in the culture medium and in some cases by expression of animal SERCA pumps or by overexpression of Pmc1p (13), the yeast homolog of PMCA, which is localized to the vacuole (7) but may function to some degree in *pmr1* mutants while transiting through

* Corresponding author. Mailing address: Department of Biology, Johns Hopkins University, 3400 N. Charles St., Baltimore, MD 21218. Phone: (410) 516-7844. Fax: (410) 516-5213. E-mail: kwc@jhu.edu.

earlier secretory compartments (32, 38). In spite of some differences in the types and localization of Ca²⁺ pumps, yeast and mammalian cells maintain a similar need and means for concentrating Ca²⁺ in secretory compartments.

Although yeast lacks any proteins related to the inositol triphosphate receptor or the ryanodine receptor, yeast does retain a full repertoire of factors involved in sensing and transducing calcium signals. Yeast homologs of calmodulin, calmodulin-dependent protein kinases, and calmodulin-dependent protein phosphatases (also called PP2B or calcineurin) have been characterized previously (8–10, 26, 29, 37, 43, 62). Growth in very high Ca²⁺ conditions elevates [Ca²⁺]_c and stimulates expression of Pmr1p and Pmc1p through a mechanism requiring Tcn1p/Crz1p, a calcineurin-dependent transcription factor (33, 54). This transcription-dependent response serves to eliminate excess Ca²⁺ from the cytoplasm, permitting growth in high-Ca²⁺ environments. Calcineurin appears to posttranslationally inhibit the function of Vcx1p/Hum1p, an H⁺/Ca²⁺ exchanger in the vacuole that also promotes growth in high-Ca²⁺ conditions (6, 44). Together, Pmr1p, Pmc1p, and Vcx1p control [Ca²⁺]_c and very likely serve to dissipate calcium signals generated in response to external stimuli and conditions.

Sequencing of the yeast genome revealed a gene termed *CCH1* that encodes a homolog of voltage-gated Ca²⁺ channels (VGCCs) found in the plasma membrane of electrically excitable animal cells. Recently, *cch1* mutants and *mid1* mutants were recovered in two separate genetic screens and shown to be partially deficient in Ca²⁺ influx that is stimulated by either pheromone treatment or stress associated with *cdc1* mutants (15, 20, 39). *MID1* encodes a plasma membrane glycoprotein with no significant similarity to any animal proteins in current databases. How these stimuli evoke Ca²⁺ influx by Cch1p and Mid1p and how the resulting calcium signals are utilized by responding cells remain unanswered.

Here we show that Cch1p and Mid1p are both required for a high-affinity Ca²⁺ influx system that can be stimulated up to 25-fold in situations causing depletion of secretory Ca²⁺ pools. We detected high levels of Cch1p- and Mid1p-dependent Ca²⁺ uptake in *pmr1* mutants and in wild-type strains overexpressing either Pmc1p or Vcx1p. Cch1p and Mid1p were also required for growth in low-calcium environments. Therefore, yeast may employ a regulatory mechanism related to CCE in animal cells in order to ensure Ca²⁺ homeostasis over a wide range of environmental conditions.

MATERIALS AND METHODS

Genetic methods. All yeast strains used in this study were derived from strain W303-1A (59) by standard molecular and genetic methods (51). The *pmc1::TRP1*, *pmr1::HIS3*, *pmr1::LEU2*, *tcn1::G418r*, *vex1Δ*, and *VCX1-D1* mutations have been described elsewhere (6, 33). The *mid1::LEU2* null mutation was introduced using plasmid pFB457 (39). The *cch1::TRP1* null mutation, which deletes 95% of the *CCH1/YGR217w* gene, was introduced by transformation of yeast with pKC289 after linearization by *EcoRI* digestion. pKC289 was constructed using standard procedures (50) by ligating into the *XhoI* and *BamHI* sites of pRS304 (52) two segments of DNA flanking *CCH1* (from nucleotides -212 to +300 and +6120 to +6900 relative to the predicted start codon) which had been amplified by PCR using primers specific to yeast genomic DNA. DNA encoding 13 repeats of the Myc epitope were inserted into the genome just before the stop codon of *CCH1* by homologous recombination of PCR-generated sequences (31). A centromere-based plasmid expressing a hemagglutinin (HA) epitope-tagged Mid1p protein (YCplacMID1-23CA5x2) was a gift from H. Iida (20). Overexpression of *PMR1*, *PMC1*, or rabbit SERCA1a was achieved in various strains by transformation with plasmid pKC152 (pRS316-Gal containing a cDNA from *PMR1* [28]), pKC302 (a 2 μm *LEU2* derivative of pKC47 [7]), or pRS316PSA (13), respectively, using empty vectors as controls.

To identify mutants specifically deficient in CCE, strains K837 (*MATα pmr1::HIS3 PMC1-lacZ::URA3*) and K842 (*MATα pmr1::LEU2 PMC1-lacZ::URA3*) were mutagenized to ~3% viability by 1 h of treatment with 3.3% methanesulfonic acid ethyl ester and then plated for single colonies on SC-uracil agar

medium supplemented with 10 mM MgCl₂. After growth overnight at 30°C on the same medium, a total of 33,000 mutagenized colonies were screened for *PMC1-lacZ* expression by permeabilizing and staining the cells with X-Gal (5-bromo-4-chloro-3-indolyl-β-D-galactopyranoside) as described previously (33). Colonies exhibiting lower than normal expression of *PMC1-lacZ* were selected, retested, and screened again on medium containing 150 mM CaCl₂ to identify mutants deficient in calmodulin, calcineurin, Tcn1p, *PMC1-lacZ*, or other factors. The remaining 267 mutants were analyzed for complementation after pairwise mating among each other. Two recessive complementation groups were identified by this approach. The larger group (30 mutants) failed to complement *cch1 pmr1* null mutants, and the smaller group (6 mutants) failed to complement *mid1 pmr1* null mutants. The ungrouped mutants may define other components of the yeast CCE-like mechanism.

Other methods. All assays were performed on log-phase yeast cultures grown in standard synthetic (SC or SCGal) or rich (YPD or YPGal) culture medium containing 2% glucose or galactose (51). For ⁴⁵Ca²⁺ accumulation assays, log-phase yeast cells were collected by centrifugation, washed, resuspended in fresh medium containing tracer amounts of ⁴⁵CaCl₂ (Amersham), incubated at 30°C for 15 s to 4 h with intermittent mixing, then harvested onto Whatman GFF filters, washed, and processed for liquid scintillation counting (6). Total cell-associated Ca²⁺ was determined from specific activities of the media: standard SC and YPD media contained 0.7 and 0.14 mM total Ca²⁺, respectively, as determined by atomic absorption spectroscopy. Extracellular Ca²⁺ concentrations were varied in some experiments by first treating 2×-concentrated YPD medium adjusted to pH 10 using NaOH with 4% (vol/vol) Chelex-100 resin (Bio-Rad) for 1 h at 20°C, removing the resin by sterile filtration, and then adjusting the volume to 1×, the pH to 6.5 with HCl, and MgCl₂ to 1 or 10 mM. This procedure depleted Ca²⁺ to less than 0.5 μM as determined by atomic absorption spectroscopy, allowing accurate determination of ⁴⁵Ca²⁺ uptake over the range from 15 μM to 8.0 mM (Fig. 1). For ⁴⁵Ca²⁺ release assays, log-phase yeast cells were grown for 6 to 9 h in YPD medium supplemented with tracer ⁴⁵CaCl₂, harvested by centrifugation at 4°C, washed four times in ice-cold YPD medium, and then diluted 11-fold into prewarmed YPD medium at 30°C. The cell-free supernatant was collected at intervals by rapid filtration through type HA 0.45-μm-pore-size filters (Millipore), and aliquots were removed for measurement of radioactivity by liquid scintillation counting.

Determination of [Ca²⁺]_c using the fluorescent Ca²⁺ indicator Indo-1 (Molecular Probes) was performed in triplicate as described previously (18). Quantitative β-galactosidase assays were performed on permeabilized cells as described previously (33). Growth assays were performed in 96-well culture dishes as described previously (6), using YPD medium supplemented with 1,2-bis(2-aminophenoxy)ethane-*N,N,N',N'*-tetraacetic acid, tetrapotassium salt (BAPTA). Total cell lysates were prepared after glass bead lysis in 10% trichloroacetic acid followed by solubilization in sample buffer containing 8 M urea and 15% sodium dodecyl sulfate (SDS) (22). SDS-polyacrylamide gel electrophoresis (PAGE) and Western blot analysis were performed as described previously (6), using monoclonal antibodies 12CA5 (Boehringer Mannheim) for the HA epitope, 9E10 (Santa Cruz Biotechnology) for the Myc epitope, and 16G9-E6 for mitochondrial porin (Molecular Probes).

For immunofluorescence microscopy, cells were grown to mid-log phase in YPD medium, fixed at room temperature in 4% formaldehyde (2 h in 1 M potassium phosphate [pH 6.5] and then overnight in 0.1 M potassium phosphate [pH 6.5]), converted to spheroplasts with 45 μg of Zymolyase 100T per ml (30 min, 30°C) in 1 ml of SHA buffer (1 M sorbitol, 0.1 M Na-HEPES [pH 7.5], 5 mM Na₂SO₄, 0.2% β-mercaptoethanol, protease inhibitor cocktail), permeabilized with 1% SDS (10 min, room temperature in SHA buffer), washed twice in SHA buffer, and then placed on coverslips coated with poly-D-lysine. Coverslips with cells were treated with WT buffer (1% nonfat dry milk, 0.5 mg of bovine serum albumin/ml, 150 mM NaCl, 50 mM HEPES [pH 7.5], 0.1% Tween 20, 1 mM Na₂SO₄) for 15 min, then incubated at 4°C overnight in WT buffer plus monoclonal antibody 9E10 (Santa Cruz Biotechnology), washed five times with WT buffer, and incubated at room temperature for 45 min with donkey anti-mouse F(ab')₂ fragment conjugated to R-phycoerythrin (Jackson ImmunoResearch). After five washes with WT buffer, coverslips were mounted on glass slides with 15 μl of mounting medium (0.1% DABCO in 90% glycerol) and sealed with fingernail polish. Fluorescence images were taken at 580 nm on a Zeiss Axiovert microscope using a 100× objective after excitation at 488 nm.

For immunoprecipitation experiments, log-phase yeast cultures were harvested, washed, and resuspended in BB buffer (0.3 M sorbitol, 0.1 M NaCl, 5 mM MgCl₂, 10 mM Tris-HCl [pH 7.5], protease inhibitors), broken by vortexing with acid-washed glass beads (425- to 600-μm diameter, 2 min, 4°C), collected, and then centrifuged at 135,000 × g for 30 min at 4°C. The crude membrane pellet was resuspended in 1.0 ml of immunoprecipitation buffer (50 mM Tris-HCl [pH 8.0], 1.0% Triton X-100, 150 mM NaCl, 2 mM EDTA, protease inhibitors) and recentrifuged. The clear supernatant containing essentially all cellular Pma1p, Cch1p, and Mid1p was then incubated with 5 μg of monoclonal antibody 12CA5 for 2 h at 4°C and rocked with 100 μl of Sepharose CL-4B beads conjugated with protein A (100 mg/ml; Sigma) for 2 h at 4°C. Beads were collected by brief centrifugation, washed three times with 1 ml of radioimmunoprecipitation assay buffer (50 mM Tris-HCl [pH 7.5], 200 mM NaCl, 1% Triton X-100, 0.5% sodium deoxycholate, 0.1% SDS), and then heated in urea sample buffer prior to SDS-PAGE and immunoblotting.

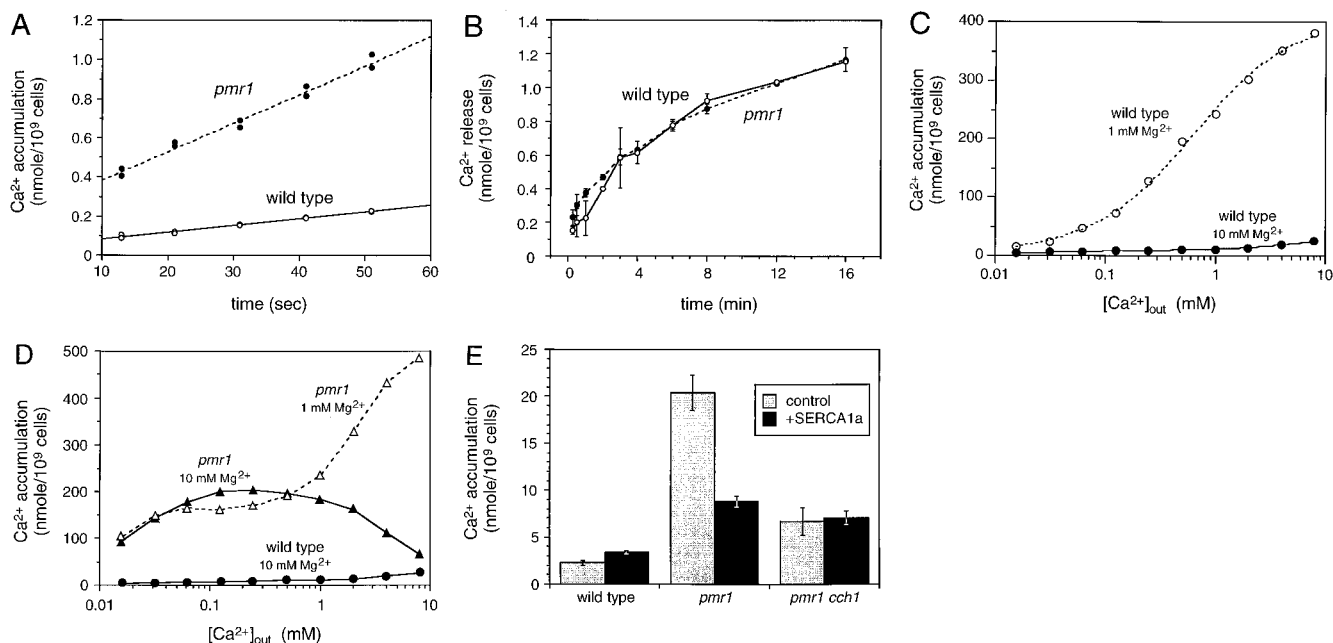


FIG. 1. Stimulation of a high-affinity Ca^{2+} influx system in *pmr1* mutants. Initial rates of $^{45}\text{Ca}^{2+}$ influx (A) and efflux (B) were determined for wild-type and *pmr1* mutant cells growing in YPD medium supplemented with 0.16 and 0.016 μM $^{45}\text{Ca}^{2+}$ as described in Materials and Methods. (C and D) Accumulation of $^{45}\text{Ca}^{2+}$ in wild-type and *pmr1* mutant cells was determined after 2.5 h of growth in YPD culture medium treated with Chelex-100 resin to remove divalent cations and supplemented with either 1 or 10 mM MgCl_2 and the indicated concentrations of $^{45}\text{CaCl}_2$. For the wild type, the data were fit to standard Michaelis-Menten equations for two enzymes by nonlinear regression. The low-affinity Ca^{2+} uptake systems predominated in 1 mM Mg^{2+} ($K_m \sim 500 \mu\text{M}$, $V_{\max} \sim 390 \text{ nmol}/10^9 \text{ cells}$) but largely disappeared in 10 mM Mg^{2+} , exposing a second high-affinity Ca^{2+} uptake system (apparent $K_m \sim 10 \mu\text{M}$, $V_{\max} \sim 9 \text{ nmol}/10^9 \text{ cells}$). The high-affinity Mg^{2+} -resistant uptake system was enhanced up to 25-fold in *pmr1* mutants relative to wild type. Some data from panel C are repeated in panel D for comparison. (E) SERCA1a functionally replaces Pmr1p. Expression of rabbit SERCA1a from plasmid pRS316PSA (13) suppressed Ca^{2+} uptake in *pmr1* mutants but not *pmr1 cch1* double mutants or the wild type. Uptake of $^{45}\text{Ca}^{2+}$ was monitored as described for panel A after 4 h of growth of log-phase cells in YPD medium (0.14 mM Ca^{2+}) supplemented with 10 mM MgCl_2 .

RESULTS

Stimulation of high-affinity Ca^{2+} influx system in *pmr1* mutants. If a CCE-like mechanism operates in yeast, we reasoned that mutants lacking one or more of the intracellular Ca^{2+} transporters would accumulate higher levels of $^{45}\text{Ca}^{2+}$ from the growth medium. In standard growth media, mutants lacking either Pmc1p, Vcx1p, or both vacuolar transporters accumulated less $^{45}\text{Ca}^{2+}$ in the vacuole (6, 7) but exhibited initial rates of $^{45}\text{Ca}^{2+}$ influx and $[\text{Ca}^{2+}]_c$ levels that were indistinguishable from those of the wild-type control strain (35, 36). Depletion of Ca^{2+} from the vacuole, therefore, did not stimulate a Ca^{2+} influx mechanism to a significant degree.

In contrast, *pmr1* mutants lacking the Golgi-localized Ca^{2+} pump accumulated extracellular $^{45}\text{Ca}^{2+}$ at an initial rate that was approximately 4.1-fold greater than the wild-type rate (Fig. 1A), 14.7 pmol/s/ 10^9 cells for *pmr1* mutants and 3.56 pmol/s/ 10^9 cells for the wild type. The rates of Ca^{2+} efflux from the wild type and *pmr1* mutants were identical (Fig. 1B), ~ 2.1 pmol/s/ 10^9 cells averaged over the first 3 min of incubation. Halachmi and Eilam reported contradictory findings (19); however, these authors measured $^{45}\text{Ca}^{2+}$ influx and efflux using nongrowing cells suspended in buffer lacking inorganic ions rather than cells growing in YPD culture medium as performed here. Therefore, our data suggest that one or more Ca^{2+} influx pathways may be stimulated in growing *pmr1* mutant cells.

Similar differences were observed in long-term $^{45}\text{Ca}^{2+}$ accumulation experiments. In one such experiment, we monitored $^{45}\text{Ca}^{2+}$ accumulation after 2.5 h of incubation in the presence of various concentrations of extracellular Ca^{2+} . For

wild-type cells, the data were fitted to standard Michaelis-Menten equations using nonlinear regression (Fig. 1C). The analysis showed that wild-type yeast cells accumulated $^{45}\text{Ca}^{2+}$ from the growth medium using primarily a low-affinity Ca^{2+} uptake system (apparent $K_m \sim 500 \mu\text{M}$, $V_{\max} \sim 390 \text{ nmol}/10^9 \text{ cells}$). Raising extracellular Mg^{2+} from 1 to 10 mM strongly inhibited the low-affinity Ca^{2+} uptake system (Fig. 1C) and exposed a second high-affinity Mg^{2+} -resistant Ca^{2+} uptake system (apparent $K_m \sim 10 \mu\text{M}$) operating at a much lower level ($V_{\max} \sim 9 \text{ nmol}/10^9 \text{ cells}$). In an experiment parallel to that of Fig. 1A, we found that addition of 10 mM MgCl_2 diminished the initial rate of $^{45}\text{Ca}^{2+}$ influx into wild-type cells 2.6-fold (to 1.28 pmol/s/ 10^9 cells [data not shown]). These and other results (3, 19) suggest that Mg^{2+} competitively inhibits the low-affinity Ca^{2+} uptake system.

When analyzed in identical conditions, the isogenic *pmr1* mutant exhibited up to 25-times-higher activity of the high-affinity Mg^{2+} -resistant Ca^{2+} uptake system, whereas the low-affinity Mg^{2+} -sensitive Ca^{2+} uptake activity was not significantly changed (Fig. 1D). The high-affinity Ca^{2+} uptake in *pmr1* mutants appeared to saturate around 250 μM extracellular Ca^{2+} and then declined to near wild-type levels as extracellular Ca^{2+} was increased toward the 10 mM range. This decline in *pmr1* mutants correlates with replenishment of Ca^{2+} into secretory organelles (2, 13). Taken together, these data suggest that a high-affinity Mg^{2+} -resistant Ca^{2+} uptake system is specifically stimulated in *pmr1* mutants when secretory compartments are depleted of Ca^{2+} .

Expression of a mammalian SERCA Ca^{2+} pump in the endoplasmic reticulum of *pmr1* mutants replenished luminal

Ca^{2+} and reversed many of the secretory defects attributed to Ca^{2+} depletion (11). We found that expression of rabbit SERCA1a also abolished the high-affinity Ca^{2+} uptake system in *pmr1* mutants but had no detectable effect in wild-type cells (Fig. 1E). Reversal of the *pmr1* phenotypes by either expression of a SERCA pump or supplementing Ca^{2+} to ≥ 10 mM indicates that the high-affinity Ca^{2+} uptake activity responds to depletion of Ca^{2+} from a secretory compartment. This evidence supports the notion that Ca^{2+} influx in yeast can be coupled to Ca^{2+} deficiency in secretory compartments, much like the process of CCE in mammalian cells.

Elevation of $[\text{Ca}^{2+}]_c$ in *pmr1* mutants. CCE in mammalian cells promotes sustained elevation of $[\text{Ca}^{2+}]_c$. To test whether $[\text{Ca}^{2+}]_c$ becomes elevated in *pmr1* mutant cells, the fluorescent Ca^{2+} indicator Indo-1 was loaded into the cytoplasm as described previously (18), and the loaded cells were resuspended in synthetic growth medium (~ 0.7 mM Ca^{2+}) for fluorescence measurements. Under these conditions, *pmr1* mutants maintained $[\text{Ca}^{2+}]_c$ at 1.6 ± 0.3 μM , whereas the isogenic wild-type strain maintained $[\text{Ca}^{2+}]_c$ at 0.1 ± 0.05 μM ($n = 3$). Similar differences between wild-type and *pmr1* mutants were noted previously for nongrowing cells suspended in a glucose buffer (19).

Elevated $[\text{Ca}^{2+}]_c$ can activate the calcineurin-dependent transcription factor Tcn1p/Crz1p (33, 54). To test whether this response pathway was stimulated in *pmr1* mutants, a *PMCI-lacZ* reporter gene was transformed into wild-type and *pmr1* mutant strains and examined for calcineurin-dependent expression using FK506, a specific inhibitor of calcineurin. Calcineurin-dependent expression of *PMCI-lacZ* was approximately five times greater in *pmr1* mutants than in wild-type cells (Fig. 2A). Calcineurin-dependent expression of *PMCI-lacZ* was completely blocked by addition of BAPTA to chelate extracellular Ca^{2+} (not shown). Thus, two independent methods show that $[\text{Ca}^{2+}]_c$ becomes elevated in *pmr1* mutants as a consequence of Ca^{2+} influx.

Identification of Cch1p and Mid1p as essential components of the high-affinity Ca^{2+} uptake system stimulated in *pmr1* mutants. To identify factors specifically required for high-affinity Ca^{2+} uptake in yeast, *pmr1* null mutants were mutagenized and screened for variants that fail to express *PMCI-lacZ* (see Materials and Methods). Mutants deficient in calmodulin, calcineurin, or Tcn1p/Crz1p function were discarded, and the remaining ~ 250 variants were subjected to complementation tests. This method revealed 30 and 6 independent mutations in two genes, *CCH1* and *MIDI1*, which had been reported previously to be important for pheromone-stimulated Ca^{2+} influx (15, 20, 39). *MIDI1* encodes a plasma membrane glycoprotein (20) related to uncharacterized proteins expressed in other fungi. *CCH1* encodes a 2,039-amino-acid protein containing four repeated membrane domains, each showing strong similarity to the $\alpha 1$ pore-forming subunit of VGCCs (E value = 10^{-54} by BLAST2.0 [1]). Deletion of either *CCH1* or *MIDI1* in *pmr1* mutants specifically abolished the high-affinity Ca^{2+} uptake system (Fig. 2B and 3) and decreased calcineurin-dependent *PMCI-lacZ* expression to wild-type levels (Fig. 2A). Simultaneous disruption of both *CCH1* and *MIDI1* in *pmr1* mutants diminished $^{45}\text{Ca}^{2+}$ uptake to the same extent as the individual disruptions (Fig. 3C), demonstrating that both Cch1p and Mid1p were required for the stimulated Ca^{2+} uptake. Thus, Cch1p and Mid1p are necessary components of a high-affinity Ca^{2+} uptake system that can be stimulated in *pmr1* mutants grown in moderate- to low-calcium environments. Additional results (see below) suggest that these proteins serve as catalytic and regulatory subunits of a heteromeric Ca^{2+} influx channel.

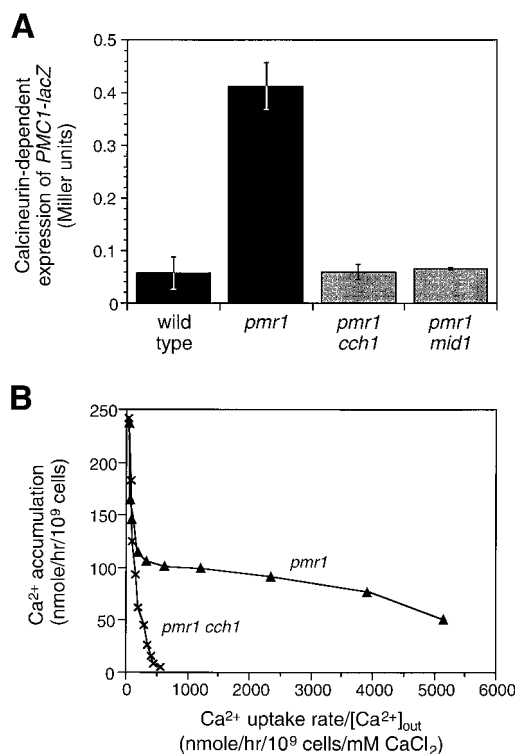


FIG. 2. Involvement of Cch1p and Mid1p function in the *pmr1*-stimulated high-affinity Ca^{2+} uptake and signaling system. (A) Expression of the calcineurin-dependent *PMCI-lacZ* reporter gene in wild-type cells and *pmr1* mutants carrying *cch1* or *mid1* null mutations was monitored after 4 h of growth in YPD medium. Mean \pm standard deviation is shown for three replicates. (B) High-affinity Ca^{2+} uptake in *pmr1* mutants requires Cch1p function. $^{45}\text{Ca}^{2+}$ uptake was monitored after 1 h of growth in Chelex-100-treated YPD medium containing 1 mM MgCl_2 as in Fig. 1 except that data were plotted in Eadie-Hofstee format (y intercept = V_{max} , slope = $-K_m$).

Excessive Ca^{2+} sequestration into the vacuole stimulates Ca^{2+} accumulation through a Cch1p- and Mid1p-dependent process. Depletion of Ca^{2+} from secretory organelles might occur as a consequence of excessive Ca^{2+} sequestration into the vacuole. To test this possibility, $^{45}\text{Ca}^{2+}$ accumulation was quantitated in strains either expressing a hyperactive Vcx1p variant or overexpressing Pmc1p. Overexpression of Pmc1p from a high-dosage plasmid greatly stimulated $^{45}\text{Ca}^{2+}$ accumulation in wild-type cells but had no significant effect on $^{45}\text{Ca}^{2+}$ accumulation in *cch1* null mutants (Fig. 3A) or *mid1* mutants (not shown). Similarly, expression of a hyperactive Vcx1p mutant termed Vcx1p-D1 (6) strongly stimulated $^{45}\text{Ca}^{2+}$ uptake in wild-type strains but not in *mid1* mutants (Fig. 3B). In both cases, stimulation of the Ca^{2+} uptake system was partially reversed by simultaneous overexpression of Pmr1p ($P < 0.04$), suggesting that the vacuolar Ca^{2+} transporters competed with Pmr1p in these conditions. Thus, the Cch1p- and Mid1p-dependent Ca^{2+} uptake system could be stimulated either by Pmr1p inactivation or by Pmr1p insufficiency due to competition with vacuolar Ca^{2+} transporters.

The possibility that increased $^{45}\text{Ca}^{2+}$ accumulation in *pmr1* mutants was due to increased Ca^{2+} sequestration by Pmc1p or Vcx1p was not supported by the results of several experiments. First, $^{45}\text{Ca}^{2+}$ accumulation and *PMCI-lacZ* expression were the same in *pmr1 vcx1* double mutants as in *pmr1* single mutants (data not shown), showing that Vcx1p was not required for the effect. Second, *pmr1 tcn1* double mutants which lack the

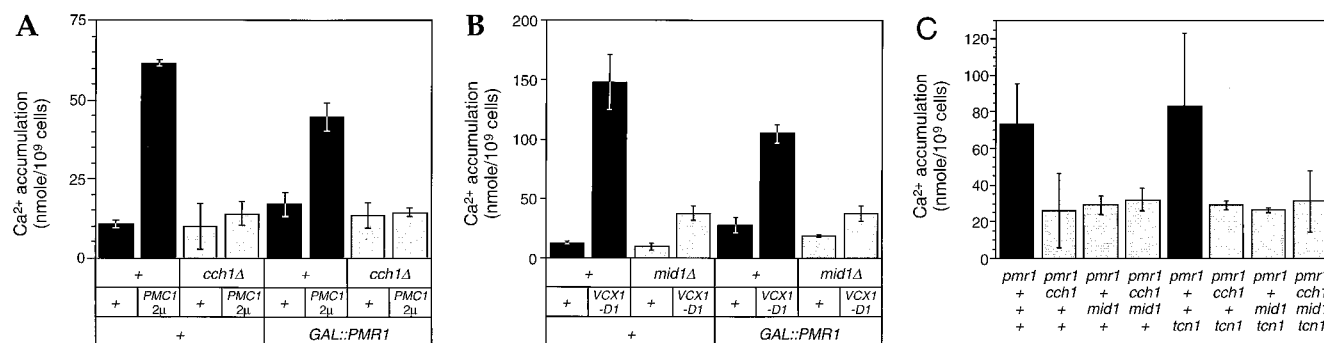


FIG. 3. Stimulation of the Cch1p- and Mid1p-dependent Ca²⁺ uptake system by increasing the activity of vacuolar Ca²⁺ transporters. (A) Accumulation of ⁴⁵Ca²⁺ in wild-type and *cch1* mutant strains bearing plasmids that overexpress either *PMCI*, *PMR1*, or both transporter genes as indicated was determined after 4 h of growth in SCGal-uracil medium (0.7 mM Ca²⁺). Mean of three replicates (\pm standard deviation) is shown. Cch1p-dependent Ca²⁺ uptake was stimulated by overexpression of Pmc1p and partially reversed by simultaneous overexpression of Pmr1p ($P < 0.02$). (B) Accumulation of ⁴⁵Ca²⁺ into wild-type, *VCX1-D1* (hyperactive), *mid1*, and *mid1 VCX1-D1* strains (all *pmc1* null mutants [6]) bearing plasmids that overexpress *PMR1* was determined as for panel A. Overexpression of Pmr1p partially reversed Mid1p-dependent uptake stimulated by overexpression of Vcx1p ($P < 0.04$). (C) Accumulation of ⁴⁵Ca²⁺ into *pmr1* and *pmr1 tcn1* strains with or without *cch1* and *mid1* mutations was determined as for Fig. 1B. Mean of three replicates (\pm standard deviation) is shown.

transcription factor required for Pmc1p induction showed levels of ⁴⁵Ca²⁺ accumulation that were similar to or even greater than those for *pmr1* mutants and still depended on Cch1p and Mid1p (Fig. 3C). Finally, *pmr1 pmc1* double mutants grown in the presence of FK506 to maintain viability (4) exhibited higher levels of ⁴⁵Ca²⁺ accumulation than similarly grown *pmr1* mutants (data not shown), consistent with previous inferences that Pmc1p may partially refill secretory compartments during its trafficking to the vacuole in *pmr1* mutants (13, 32). Thus, the stimulation of the Cch1p- and Mid1p-dependent Ca²⁺ uptake system did not correlate with the abundance of any particular Ca²⁺ transporter or the level of [Ca²⁺]_e but instead correlated inversely with Ca²⁺ transport into secretory compartments.

Expression and localization of Cch1p in *pmr1* mutants. A possible mechanism for the observed increase in Ca²⁺ influx and accumulation upon depletion of Ca²⁺ stores is increased expression of either Cch1p or Mid1p or both proteins. To test this possibility, quantitative Western blot analyses were performed using epitope-tagged variants of Cch1p and Mid1p. Thirteen repeats of the Myc epitope were inserted at the extreme C terminus of Cch1p by homologous recombination into the chromosomal *CCH1* gene (see Materials and Methods). The resulting Cch1p-Myc fusion protein was fully functional in *pmr1* mutants (data not shown) but was expressed at identical levels in wild-type and *pmr1* mutant strains grown in standard medium (Fig. 4A, top panel). In this experiment, mitochondrial porin was used as a loading control (bottom panel). Furthermore, a functional Mid1p-HA fusion protein expressed from a low-dosage plasmid from its own promoter (20) also accumulated at similar levels in wild-type and *pmr1* mutant strains (Fig. 4B). In this case, nonspecific cross-reacting bands served as internal loading controls. These results rule out the possibility that depletion-stimulated Ca²⁺ uptake system involves significant up-regulation of Cch1p or Mid1p.

It is possible that depletion of Ca²⁺ from secretory organelles promotes the relocalization of Cch1p and/or Mid1p from internal compartments to the cell surface or their interaction in the plasma membrane, thereby allowing their function as a high-affinity Ca²⁺ influx channel. Such a mechanism has been proposed recently for vertebrate cells (61). A functional epitope-tagged variant of Mid1p was localized to the plasma membrane of wild-type yeast cells in nonsignaling conditions (20). To determine whether Cch1p might undergo reg-

ulated trafficking, the epitope-tagged Cch1p-Myc variant was localized by immunofluorescence microscopy. As observed previously for Mid1p, Cch1p was detectable only at the surface rim in wild-type cells (Fig. 4C). No significant staining was evident in intracellular structures aside from a faint cytoplasmic staining that was also evident in the nontagged control strain. A similar staining pattern was observed in *pmr1* mutants (data not shown). To determine whether Cch1p physically interacts with Mid1p in the plasma membrane, wild-type cells expressing Cch1p-Myc and/or Mid1p-HA were lysed in the presence of nondenaturing detergent and subjected to immunoprecipitation with anti-HA antibodies followed by Western blotting with anti-Myc antibodies. Cch1p was efficiently coprecipitated with Mid1p in the tagged strain (Fig. 4D, lane 4) but not in control strains lacking the tag (lane 2). The plasma membrane marker protein Pma1p was not precipitated in any conditions (bottom panels). Thus, Cch1p and Mid1p both localize to the plasma membrane of unstimulated cells, where they physically interact. Stimulation of Cch1p and Mid1p function in *pmr1* mutants may therefore involve some other type of regulatory mechanism such as a diffusible messenger (5).

Cch1p and Mid1p supply essential Ca²⁺ to Pmr1p during ion starvation. Previous studies showed that wild-type cells cultured in media supplemented with BAPTA, a potent chelator of Ca²⁺ and other ions, exhibit defects in protein sorting and secretion similar to those observed in *pmr1* mutants in standard medium (13). Very high levels of BAPTA even inhibited the growth of wild-type cells, whereas much lower chelator concentrations inhibited the growth of *pmr1* mutants (11, 13). It can be inferred from these and other experiments that an essential role of Pmr1p is to supply secretory organelles with the Ca²⁺ necessary to sustain secretion and growth in low-calcium environments. The studies presented above predict that Cch1p and Mid1p would also be important for growth in low calcium conditions due to their ability to provide substrate to Pmr1p. This prediction was tested by comparing the growth of various mutants lacking Cch1p, Mid1p, and/or Pmr1p in media supplemented with increasing amounts of BAPTA.

Interestingly, *cch1* and *mid1* mutants each failed to grow at intermediate concentrations of BAPTA in between the concentrations effective for wild-type and *pmr1* mutant strains (Fig. 5A). The *cch1 mid1* double mutant was as sensitive to BAPTA as the single mutants, suggesting again that Cch1p and

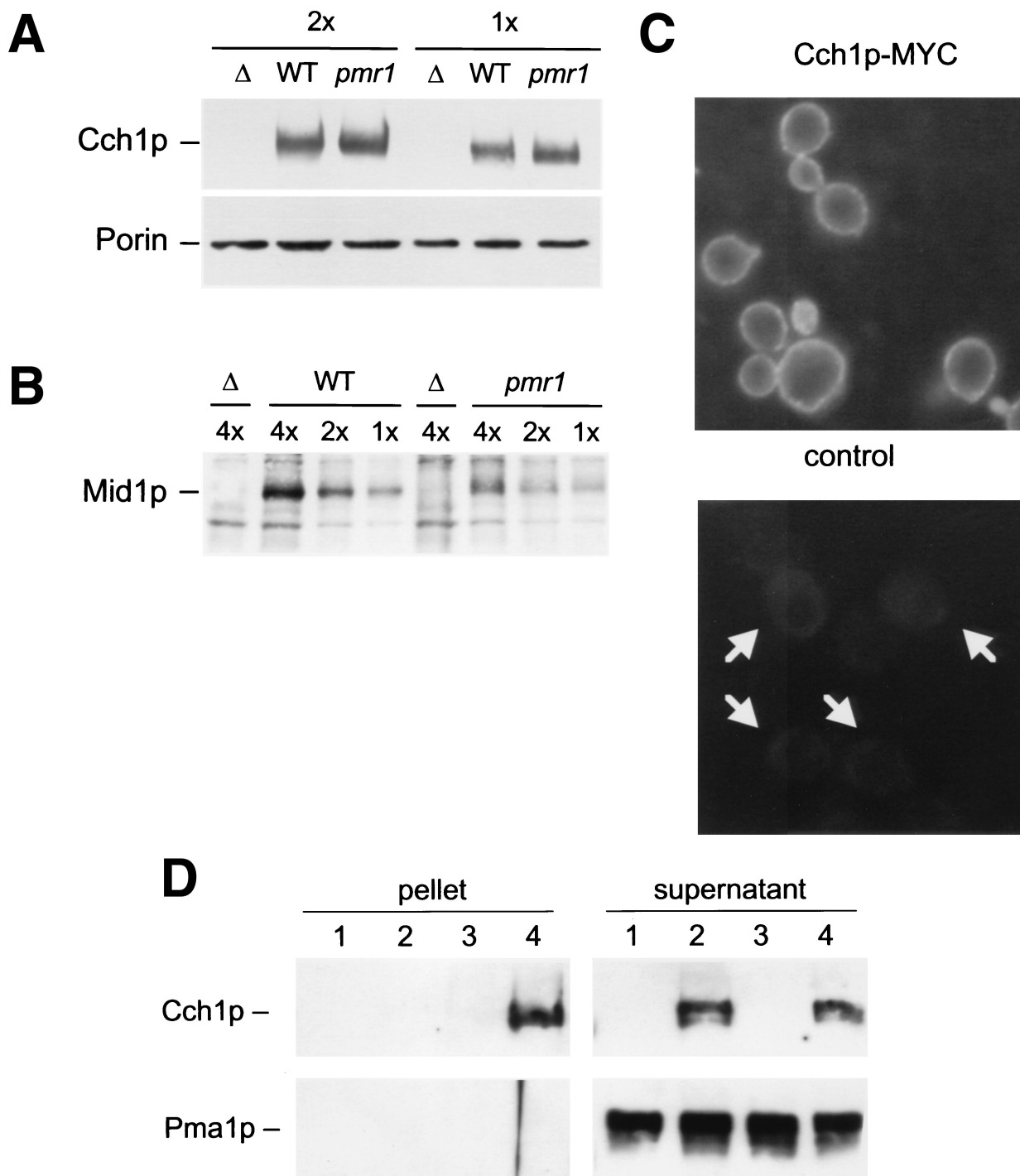


FIG. 4. Expression, localization, and interaction between Cch1p and Mid1p are unaffected in *pmr1* mutants. (A and B) Western blot analysis of epitope-tagged Cch1p and Mid1p variants was performed on total cell protein extracted from wild-type (WT), *pmr1* mutant (*pmr1*), or untagged control (Δ) strains after growth in YPD medium to mid-log phase. Various amounts of each sample (either 1, 2, or 4 cell equivalents) were loaded and compared to endogenous cross-reacting proteins or mitochondrial porin as standards to control for slight variations in sample preparation or loading. (C) Immunofluorescence microscopy was performed on wild-type strains containing (top) or lacking (bottom) the epitope-tagged Cch1p-Myc variant. (D) Coimmunoprecipitation of Mid1p and Cch1p. Crude membranes were isolated from wild-type cells carrying Mid1p-HA (lanes 3 and 4) or Cch1p-Myc (lanes 2 and 4), solubilized in buffer containing Triton X-100, and immunoprecipitated using monoclonal antibodies to the HA epitope. Equal portions of the immunoprecipitated pellet and supernatant were then analyzed by Western blotting using either monoclonal antibodies to the Myc epitope (top) or polyclonal antibodies to the Pma1p protein (bottom). Cch1p but not Pma1p coprecipitated with Mid1p-HA (lane 4).

Mid1p function within a single high-affinity Ca²⁺ uptake pathway. If the major function of these proteins is to provide sufficient Ca²⁺ to the cytoplasm for concentration by Pmr1p in secretory organelles, Cch1p and Mid1p would be expected to

have little or no effect on BAPTA tolerance in *pmr1* mutants due to their inability to refill the secretory stores. Indeed, *mid1 pmr1* double mutants were just as sensitive to BAPTA as *pmr1* single mutants, showing that Mid1p confers BAPTA tolerance

sponded to membrane stretch (21). Overexpression of Mid1p in either *pmr1* mutants (data not shown) or wild-type cells under conditions of membrane stretch (20) had no effect on Ca²⁺ influx rates, as if another factor was limiting for Mid1p activity in yeast. Finally, we show that Cch1p and Mid1p can physically interact in the plasma membrane of wild-type cells.

How closely does CCE in animals resemble the CCE-like process in yeast? Homologs of Pmr1p, the secretory Ca²⁺ ATPases, are expressed ubiquitously in mammalian cells but they have not yet been characterized functionally (17). Their involvement in Ca²⁺ homeostasis and potential for coupling to Ca²⁺ influx mechanisms therefore remain uninvestigated. On the other hand, SERCA-type Ca²⁺ pumps are well known to supply Ca²⁺ to the endoplasmic reticulum and to prevent stimulation of CCE pathway in mammalian cells. Specific inhibitors of SERCA selectively deplete the endoplasmic reticulum of Ca²⁺ and concomitantly enhance Ca²⁺ influx through CCE channels in the plasma membrane. Physiological stimulation of CCE in animal cells occurs after release of Ca²⁺ from the endoplasmic reticulum through the activation of Ca²⁺ release channels such as the IP₃ receptors, RyR receptors, or other unidentified channels. Although the Ca²⁺ influx channels activated during CCE have not been conclusively identified, recent evidence suggests that certain members of the TRP family of ion channels (TRPCs) respond to depletion of Ca²⁺ from the endoplasmic reticulum at least when expressed in heterologous systems (46). TRPCs are only distantly related to VGCCs, and the yeast genome contains no clear homologues of TRPC. At least 10 distinct genes encoding VGCC catalytic subunits have been identified in humans, and few of these proteins have been ruled out as CCE channels. Indeed, specific VGCC inhibitors can block Ca²⁺ influx in response to SERCA inhibition in at least some vertebrate cell types (30, 60). Given that the need for Ca²⁺ in secretory organelles is conserved among eukaryotes, it is plausible that a mechanism to ensure Ca²⁺ homeostasis in the secretory pathway arose prior to the divergence of animals and fungi and is largely conserved in both groups of organisms today. In this view, the primary differences between fungal and animal cells would be the types of Ca²⁺ pumps used to supply the secretory organelles and the types of Ca²⁺ channels that release secretory Ca²⁺. The significance of these differences may be relatively minor because stimulation of CCE-like processes in *pmr1* mutants could be suppressed by expression of rabbit SERCA1a (Fig. 1D). However, the available data do not yet exclude the alternative possibility of independent origins of CCE in animals and yeast. Mutants lacking Pmr1p exhibit only a twofold decrease of free Ca²⁺ in the endoplasmic reticulum from a level that is already much lower than that of mammalian cells (55), raising the possibility that another secretory organelle such as the Golgi complex couples to the CCE-like process in yeast.

Current hypotheses for the coupling between Ca²⁺ influx channels in the plasma membrane and Ca²⁺ depletion in the endoplasmic reticulum include secretory mechanisms (61), docking mechanisms involving proteins in the plasma membrane and endoplasmic reticulum (42), conformational coupling mechanisms involving IP₃ receptors and certain TRPCs (24, 25), various forms of retrograde signal transduction (46), and the production or release of small diffusible molecules that serve as intracellular messengers (40, 47). One such messenger of CCE termed CIF (calcium influx factor) has been described as a membrane-impermeant molecule that rapidly accumulates in human T cells treated with SERCA inhibitors and triggers Ca²⁺ influx in the absence of Ca²⁺ release from the endoplasmic reticulum (23, 58). A molecule with identical properties was recently shown to accumulate in *pmr1* mutants but not

wild-type yeast cells (5). The contribution of this molecule to Ca²⁺ influx in yeast cells has not been tested because no methods to introduce it into the cytoplasm or to genetically manipulate its biosynthesis have been developed. Additionally, the kinetics of Cch1p stimulation and CIF accumulation after depletion of secretory Ca²⁺ stores could not be determined in yeast because Pmr1p is resistant to the known SERCA inhibitors (53) and no other means of rapidly triggering Ca²⁺ depletion from secretory organelles have been developed. Despite these limitations, the yeast system affords genetic technologies useful for the identification of factors involved in the response to depletion of secretory Ca²⁺ stores. Characterization of the corresponding animal factors together with more mechanistic studies of the yeast system should help resolve the questions of whether the CCE mechanism evolved prior to the divergence of fungi and animals, which features of the mechanism are conserved today, and how the mechanism functions and varies in diverse cell types.

ACKNOWLEDGMENTS

We are grateful to Steve Garrett, Hidetoshi Iida, and Hans Rudolph for plasmids and advice, to Fujisawa USA Inc. for a gift of FK506, and to members of our laboratory and department for advice and technical support.

This work was supported by grants from the Searle Scholars Program/The Chicago Community Trust and the National Institutes of Health (grant GM53082 to K.W.C.).

REFERENCES

- Altschul, S. F., T. L. Madden, A. A. Schaffer, J. Zhang, Z. Zhang, W. Miller, and D. J. Lipman. 1997. Gapped BLAST and PSI-BLAST: a new generation of protein database search programs. *Nucleic Acids Res.* **25**:3389–3402.
- Antebi, A., and G. R. Fink. 1992. The yeast Ca²⁺-ATPase homologue, *PMR1*, is required for normal Golgi function and localizes in a novel Golgi-like distribution. *Mol. Biol. Cell* **3**:633–654.
- Beeler, T., K. Gable, C. Zhao, and T. Dunn. 1994. A novel protein, Csg2p, is required for Ca²⁺ regulation in *Saccharomyces cerevisiae*. *J. Biol. Chem.* **269**:7279–7284.
- Catterall, W. A. 1996. Molecular properties of sodium and calcium channels. *J. Bioenerg. Biomembr.* **28**:219–230.
- Csutora, P., Z. Su, H. Y. Kim, A. Bugrim, K. W. Cunningham, R. Nuccitelli, J. E. Keizer, M. R. Hanley, J. E. Blalock, and R. B. Marchase. 1999. Calcium influx factor is synthesized by yeast and mammalian cells depleted of organellar calcium stores. *Proc. Natl. Acad. Sci. USA* **96**:121–126.
- Cunningham, K. W., and G. R. Fink. 1996. Calcineurin inhibits *Vcx1*-dependent H⁺/Ca²⁺ exchange and induces Ca²⁺ ATPases in yeast. *Mol. Cell. Biol.* **16**:2226–2237.
- Cunningham, K. W., and G. R. Fink. 1994. Calcineurin-dependent growth control in *Saccharomyces cerevisiae* mutants lacking *PMCI*, a homolog of plasma membrane Ca²⁺ ATPases. *J. Cell Biol.* **124**:351–363.
- Cyert, M. S., R. Kunisawa, D. Kaim, and J. Thorner. 1991. Yeast has homologs (*CNA1* and *CNA2* gene products) of mammalian calcineurin, a calmodulin-regulated phosphoprotein phosphatase. *Proc. Natl. Acad. Sci. USA* **88**:7376–7380.
- Cyert, M. S., and J. Thorner. 1992. Regulatory subunit (*CNB1* gene product) of yeast Ca²⁺/calmodulin-dependent phosphoprotein phosphatases is required for adaptation to pheromone. *Mol. Cell. Biol.* **12**:3460–3469.
- Davis, T. N., M. S. Urdea, F. R. Masiarz, and J. Thorner. 1986. Isolation of the yeast calmodulin gene: calmodulin is an essential protein. *Cell* **47**:423–431.
- Degand, I., P. Catty, E. Talla, D. Thinès-Sempoux, A. De Kerchove D'Exaerde, A. Goffeau, and M. Ghislain. 1999. Rabbit sarcoplasmic reticulum Ca²⁺-ATPase replaces yeast *PMCI* and *PMR1* Ca²⁺-ATPases for cell viability and calcineurin-dependent regulation of calcium tolerance. *Mol. Microbiol.* **31**:545–556.
- de Virgilio, C., N. Burckert, J. M. Neuhaus, T. Boller, and A. Wiemken. 1993. *CNE1*, a *Saccharomyces cerevisiae* homologue of the genes encoding mammalian calnexin and calreticulin. *Yeast* **9**:185–188.
- Dürr, G., J. Strayle, R. Plempner, S. Elbs, S. K. Klee, P. Catty, D. H. Wolf, and H. K. Rudolph. 1998. The medial-Golgi ion pump Pmr1 supplies the yeast secretory pathway with Ca²⁺ and Mn²⁺ required for glycosylation, sorting, and endoplasmic reticulum-associated protein degradation. *Mol. Biol. Cell* **9**:1149–1162.
- Farquhar, R., N. Honey, S. J. Murant, P. Bossier, L. Schultz, D. Montgomery, R. W. Ellis, R. B. Freedman, and M. F. Tuite. 1991. Protein disulfide

- isomerase is essential for viability in *Saccharomyces cerevisiae*. *Gene* **108**:81–89.
15. Fischer, M., N. Schnell, J. Chattaway, P. Davies, G. Dixon, and D. Sanders. 1997. The *Saccharomyces cerevisiae* *CCH1* gene is involved in calcium influx and mating. *FEBS Lett.* **419**:259–262.
 16. Fuller, R. S., A. Brake, and J. Thorner. 1989. Yeast prohormone processing enzyme (*KEX2* gene product) is a Ca^{2+} -dependent serine protease. *Proc. Natl. Acad. Sci. USA* **86**:1434–1438.
 17. Guntjeski-Hamblin, A. M., D. M. Clarke, and G. E. Shull. 1992. Molecular cloning and tissue distribution of alternatively spliced mRNAs encoding possible mammalian homologues of the yeast secretory pathway calcium pump. *Biochemistry* **31**:7600–7608.
 18. Halachmi, D., and Y. Eilam. 1993. Calcium homeostasis in yeast cells exposed to high concentrations of calcium. Roles of vacuolar H^+ -ATPase and cellular ATP. *FEBS Lett.* **316**:73–78.
 19. Halachmi, D., and Y. Eilam. 1996. Elevated cytosolic free Ca^{2+} concentrations and massive Ca^{2+} accumulation within vacuoles, in yeast mutant lacking *PMR1*, a homolog of Ca^{2+} -ATPase. *FEBS Lett.* **392**:194–200.
 20. Iida, H., H. Nakamura, T. Ono, M. S. Okumura, and Y. Anraku. 1994. *MID1*, a novel *Saccharomyces cerevisiae* gene encoding a plasma membrane protein, is required for Ca^{2+} influx and mating. *Mol. Cell. Biol.* **14**:8259–8271.
 21. Kanzaki, M., M. Nagasawa, I. Kojima, C. Sato, K. Naruse, M. Sokabe, and H. Iida. 1999. Molecular identification of a eukaryotic, stretch-activated nonselective cation channel. *Science* **285**:882–886.
 22. Katzmann, D. J., E. A. Epping, and W. S. Moye-Rowley. 1999. Mutational disruption of plasma membrane trafficking of *Saccharomyces cerevisiae* Yor1p, a homologue of mammalian multidrug resistance protein. *Mol. Cell. Biol.* **19**:2998–3009.
 23. Kim, H. Y., D. Thomas, and M. R. Hanley. 1995. Chromatographic resolution of an intracellular calcium influx factor from thapsigargin-activated Jurkat cells. Evidence for multiple activities influencing calcium elevation in *Xenopus* oocytes. *J. Biol. Chem.* **270**:9706–9708.
 24. Kiselyov, K., G. A. Mignery, M. X. Zhu, and S. Muallem. 1999. The N-terminal domain of the IP₃ receptor gates store-operated hTrp3 channels. *Mol. Cell* **4**:423–429.
 25. Kiselyov, K., X. Xu, G. Mozhayeva, T. Kuo, I. Pessah, G. Mignery, X. Zhu, L. Birnbaumer, and S. Muallem. 1998. Functional interaction between InsP₃ receptors and store-operated hTrp3 channels. *Nature* **396**:478–482.
 26. Kuno, T., H. Tanaka, H. Mukai, C. D. Chang, K. Hiraga, T. Miyakawa, and C. Tanaka. 1991. cDNA cloning of a calcineurin B homolog in *Saccharomyces cerevisiae*. *Biochem. Biophys. Res. Commun.* **180**:1159–1163.
 27. Lipari, F., and A. Herscovics. 1999. Calcium binding to the class I alpha-1,2-mannosidase from *Saccharomyces cerevisiae* occurs outside the EF hand motif. *Biochemistry* **38**:1111–1118.
 28. Liu, H., J. Krizek, and A. Bretscher. 1992. Construction of a GAL1-regulated yeast cDNA expression library and its application to the identification of genes whose overexpression causes lethality in yeast. *Genetics* **132**:665–673.
 29. Liu, Y., S. Ishii, M. Tokai, H. Tsutsumi, O. Ohki, R. Akada, K. Tanaka, E. Tsuchiya, S. Fukui, and T. Miyakawa. 1991. The *Saccharomyces cerevisiae* genes (*CMPI* and *CMPI2*) encoding calmodulin-binding proteins homologous to the catalytic subunit of mammalian protein phosphatase 2B. *Mol. Gen. Genet.* **227**:52–59.
 30. Lomax, R. B., C. J. Herrero, E. Garcia-Palomer, A. G. Garcia, and C. Montiel. 1998. Capacitative Ca^{2+} entry into *Xenopus* oocytes is sensitive to omega-conotoxins GVIA, MVIIA and MVIIC. *Cell Calcium* **23**:229–239.
 31. Longtine, M. S., A. McKenzie, III, D. J. Demarini, N. G. Shah, A. Wach, A. Brachat, P. Philippsen, and J. R. Pringle. 1998. Additional modules for versatile and economical PCR-based gene deletion and modification in *Saccharomyces cerevisiae*. *Yeast* **14**:953–961.
 32. Marchi, V., A. Sorin, Y. Wei, and R. Rao. 1999. Induction of vacuolar Ca^{2+} -ATPase and H^+ / Ca^{2+} exchange activity in yeast mutants lacking Pmr1, the Golgi Ca^{2+} -ATPase. *FEBS Lett.* **454**:181–186.
 33. Matheos, D. P., T. J. Kingsbury, U. S. Ahsan, and K. W. Cunningham. 1997. Ten1p/Crz1p, a calcineurin-dependent transcription factor that differentially regulates gene expression in *Saccharomyces cerevisiae*. *Genes Dev.* **11**:3445–3458.
 34. Meaden, P., K. Hill, J. Wagner, D. Slipetz, S. S. Sommer, and H. Bussey. 1990. The yeast *KRE5* gene encodes a probable endoplasmic reticulum protein required for (1→6)- β -D-glucan synthesis and normal cell growth. *Mol. Cell. Biol.* **10**:3013–3019.
 35. Miseta, A., L. Fu, R. Kellermayer, J. Buckley, and D. M. Bedwell. 1999. The Golgi apparatus plays a significant role in the maintenance of Ca^{2+} homeostasis in the *vps33 Δ* vacuolar biogenesis mutant of *Saccharomyces cerevisiae*. *J. Biol. Chem.* **274**:5939–5947.
 36. Miseta, A., R. Kellermayer, D. P. Aiello, L. Fu, and D. M. Bedwell. 1999. The vacuolar Ca^{2+} / H^+ exchanger Vcx1p/Hum1p tightly controls cytosolic Ca^{2+} levels in *S. cerevisiae*. *FEBS Lett.* **451**:132–136.
 37. Ohya, Y., H. Kawasaki, K. Suzuki, J. Londesborough, and Y. Anraku. 1991. Two yeast genes encoding calmodulin-dependent protein kinases. Isolation, sequencing and bacterial expressions of *CMK1* and *CMK2*. *J. Biol. Chem.* **266**:12784–12794.
 38. Okorokov, L. A., and L. Lehle. 1998. Ca^{2+} -ATPases of *Saccharomyces cerevisiae*: diversity and possible role in protein sorting. *FEMS Microbiol. Lett.* **162**:83–91.
 39. Paidhungat, M., and S. Garrett. 1997. A homolog of mammalian, voltage-gated calcium channels mediates yeast pheromone-stimulated Ca^{2+} uptake and exacerbates the *cdc1(Ts)* growth defect. *Mol. Cell. Biol.* **17**:6339–6347.
 40. Parekh, A. B., H. Terlau, and W. Stuhmer. 1993. Depletion of InsP₃ stores activates a Ca^{2+} and K^+ current by means of a phosphatase and a diffusible messenger. *Nature* **364**:814–818.
 41. Parlati, F., M. Dominguez, J. J. Bergeron, and D. Y. Thomas. 1995. *Saccharomyces cerevisiae* *CNE1* encodes an endoplasmic reticulum (ER) membrane protein with sequence similarity to calnexin and calreticulin and functions as a constituent of the ER quality control apparatus. *J. Biol. Chem.* **270**:244–253.
 42. Patterson, R. L., D. B. van Rossum, and D. L. Gill. 1999. Store-operated Ca^{2+} entry: evidence for a secretion-like coupling model. *Cell* **98**:487–499.
 43. Pausch, M. H., D. Kaim, R. Kunisawa, A. Admon, and J. Thorner. 1991. Multiple Ca^{2+} /calmodulin-dependent protein kinase genes in a unicellular eukaryote. *EMBO J.* **10**:1511–1522.
 44. Pozos, T. C., I. Sekler, and M. S. Cyert. 1996. The product of *HUM1*, a novel yeast gene, is required for vacuolar Ca^{2+} / H^+ exchange and is related to mammalian Na^+ / Ca^{2+} exchangers. *Mol. Cell. Biol.* **16**:3730–3741.
 45. Putney, J. W., Jr. 1986. A model for receptor-regulated calcium entry. *Cell Calcium* **7**:1–12.
 46. Putney, J. W., Jr., and R. R. McKay. 1999. Capacitative calcium entry channels. *Bioessays* **21**:38–46.
 47. Randriamampita, C., and R. Y. Tsien. 1993. Emptying of intracellular Ca^{2+} stores releases a novel small messenger that stimulates Ca^{2+} influx. *Nature* **364**:809–814.
 48. Rose, M. D., L. M. Misra, and J. P. Vogel. 1989. KAR2, a karyogamy gene, is the yeast homolog of the mammalian BiP/GRP78 gene. *Cell* **57**:1211–1221.
 49. Rudolph, H. K., A. Antebi, G. R. Fink, C. M. Buckley, T. E. Dorman, J. LeVitre, L. S. Davidow, J. I. Mao, and D. T. Moir. 1989. The yeast secretory pathway is perturbed by mutations in *PMR1*, a member of a Ca^{2+} ATPase family. *Cell* **58**:133–145.
 50. Sambrook, J., E. F. Fritsch, and T. Maniatis. 1989. *Molecular cloning: a laboratory manual*. Cold Spring Harbor Laboratory Press, Cold Spring Harbor, N.Y.
 51. Sherman, F., J. B. Hicks, and G. R. Fink. 1986. *Methods in yeast genetics*. Cold Spring Harbor Laboratory, Cold Spring Harbor, N.Y.
 52. Sikorski, R. S., and P. Hieter. 1989. A system of shuttle vectors and yeast host strains designed for efficient manipulation of DNA in *Saccharomyces cerevisiae*. *Genetics* **122**:19–27.
 53. Sorin, A., G. Rosas, and R. Rao. 1997. *PMR1*, a Ca^{2+} -ATPase in yeast Golgi, has properties distinct from sarco/endoplasmic reticulum and plasma membrane calcium pumps. *J. Biol. Chem.* **272**:9895–9901.
 54. Stathopoulos, A. M., and M. S. Cyert. 1997. Calcineurin acts through the *CRZ1/TCN1* encoded transcription factor to regulate gene expression in yeast. *Genes Dev.* **11**:3432–3444.
 55. Strayle, J., T. Pozzan, and H. K. Rudolph. 1999. Steady-state free Ca^{2+} in the yeast endoplasmic reticulum reaches only 10 μM and is mainly controlled by the secretory pathway pump Pmr1. *EMBO J.* **18**:4733–4743.
 56. Tachibana, C., and T. H. Stevens. 1992. The yeast *EUG1* gene encodes an endoplasmic reticulum protein that is functionally related to protein disulfide isomerase. *Mol. Cell. Biol.* **12**:4601–4611.
 57. Tachikawa, H., T. Miura, Y. Katakura, and T. Mizunaga. 1991. Molecular structure of a yeast gene, *PDI1*, encoding protein disulfide isomerase that is essential for cell growth. *J. Biochem.* **110**:306–313.
 58. Thomas, D., and M. R. Hanley. 1995. Evaluation of calcium influx factors from stimulated Jurkat T-lymphocytes by microinjection into *Xenopus* oocytes. *J. Biol. Chem.* **270**:6429–6432.
 59. Wallis, J. W., G. Chrebet, G. Brodsky, M. Rolfe, and R. Rothstein. 1989. A hyper-recombination mutation in *S. cerevisiae* identifies a novel eukaryotic topoisomerase. *Cell* **58**:409–419.
 60. Willmott, N. J., Q. Choudhury, and R. J. Flower. 1996. Functional importance of the dihydropyridine-sensitive, yet voltage-insensitive store-operated Ca^{2+} influx of U937 cells. *FEBS Lett.* **394**:159–164.
 61. Yao, Y., A. V. Ferrer-Montiel, M. Montal, and R. Y. Tsien. 1999. Activation of store-operated Ca^{2+} current in *Xenopus* oocytes requires SNAP-25 but not a diffusible messenger. *Cell* **98**:475–485.
 62. Ye, R. R., and A. Bretscher. 1992. Identification and molecular characterization of the calmodulin-binding subunit gene (*CMPI*) of protein phosphatase 2B from *Saccharomyces cerevisiae*. An alpha-factor inducible gene. *Eur. J. Biochem.* **204**:713–723.