



# Blood and urine biomarkers in osteoarthritis – an update on cartilage associated type II collagen and aggrecan markers

Anne C. Bay-Jensen<sup>a</sup>, Ali Mobasher<sup>b,c,d,e,f</sup>, Christian S. Thudium<sup>a</sup>  
Virginia B. Kraus<sup>g</sup>, and Morten A. Karsdal<sup>a</sup>

## Purpose of review

Osteoarthritis (OA) is a painful disease for which drug development has proven difficult. One major reason for this is the heterogeneity of the disease and the current lack of operationalized means to distinguish various disease endotypes (molecular subtypes). Biomarkers measured in blood or urine, reflecting joint tissue turnover, have been developed and tested during the last decades. In this narrative review, we provide highlights on biomarkers derived from the two most studied and abundant cartilage proteins – type II collagen and aggrecan.

## Recent findings

Multiple biomarkers assessing type II collagen degradation and formation, and aggrecan turnover have been developed. Several markers, such as uCTX-II, have been validated for their association with disease severity and prognosis, as well as pharmacodynamically used to describe the mode of action and efficacy of drugs in development. There is a great need for biomarkers for subdividing patients (i.e., endotyping) and recent scientific advances have not yet come closer to achieving this goal.

## Summary

There is strong support for using biomarkers for understanding OA, reflecting degradation and formation of the joint tissues, focused on type II collagen and aggrecan. There is still a lack of in vitro diagnostics, in all contexts of use.

## Keywords

aggrecan, biomarker, osteoarthritis, type II collagen

## INTRODUCTION

The most prevalent form of arthritis is osteoarthritis (OA). It is associated with overuse of the joints, injury, metabolic and inflammatory factors, and accounts for more than 10% of disabilities and symptomatic diseases of the elderly population [1,2]. Joint pain and progressive degeneration of articular cartilage are hallmarks of the disease which include remodeling of all joint tissues (bone, synovium, ligaments) resulting in painful articular cartilage loss, manifested as radiographic joint space narrowing (JSN) [3]. Research indicates that the structural integrity and preservation of articular cartilage is highly reliant on normal subchondral bone turnover, synovial crosstalk, physiological biomechanical stresses and intact chondrocyte function [4]. Both in the clinical and research settings, and possibly most importantly in drug development, there is a need for validated diagnostic tools for treatment selection. Thus, developing markers

<sup>a</sup>Nordic Bioscience, Herlev, Denmark, <sup>b</sup>Research Unit of Medical Imaging, Physics and Technology, Faculty of Medicine, University of Oulu, Oulu, Finland, <sup>c</sup>Department of Regenerative Medicine, State Research Institute Centre for Innovative Medicine, Vilnius, Lithuania, <sup>d</sup>University Medical Center Utrecht, Department of Orthopedics, Rheumatology and Clinical Immunology, Utrecht, The Netherlands, <sup>e</sup>Department of Joint Surgery, The First Affiliated Hospital, Sun Yat-sen University, Guangzhou, China, <sup>f</sup>World Health Organization Collaborating Centre for Public Health Aspects of Musculoskeletal Health and Aging, University of Liege, Liege, Belgium and <sup>g</sup>Duke Molecular Physiology Institute and Department of Medicine, Duke University School of Medicine, Durham, North Carolina, USA

Correspondence to Anne C. Bay-Jensen, Immunoscience, Nordic Bioscience, Herlev Hovedgade 205-7, 2730 Herlev, Denmark.  
Tel: +45 44 52 52 52; e-mail: acbj@nordicbio.com

**Curr Opin Rheumatol** 2022, 34:54–60

DOI:10.1097/BOR.0000000000000845

This is an open access article distributed under the terms of the Creative Commons Attribution-Non Commercial-No Derivatives License 4.0 (CCBY-NC-ND), where it is permissible to download and share the work provided it is properly cited. The work cannot be changed in any way or used commercially without permission from the journal.

## KEY POINTS

- Biomarkers of cartilage proteins type II collagen and aggrecan are the most abundant and most studied to date.
- Several biomarkers have been developed that target breakdown or formation peptides of type II collagen and aggrecan.
- Many of the existing OA-related biomarkers are associated with radiographic severity, progression, and pharmacodynamics.
- Very few biomarkers have been tested in the context of identifying specific endotypes of OA.

with these properties is a top priority for researchers in the biomarker field for future management of OA.

Disease-modifying OA drugs (DMOADs), *i.e.*, drugs that could ease pain and slow the destruction of joints, have not yet been approved for OA [5,6]. The lack of biological understanding what drives OA and a heterogeneous patient population may explain why no medication has thus far been developed. Therefore, we need to expand our understanding of the subclinical or molecular subtypes, *i.e.*, endotypes, as well as the corresponding markers that allow separation of patient groups.

Although many aspects of biomarker development need attention, we have elected to focus on the following: (1) Pharmacodynamic biomarkers allowing the monitoring of treatment responses within a clinical study enabling informed decision making in clinical studies faster and with fewer patients, analogous to the response of HbA1c in type II diabetes studies. (2) Biomarkers reflecting disease activity, which may possibly be used for identification of fast progressors and those in most need of treatment. This will also allow for selection of the optimal patients for clinical studies.

Blood, synovial fluid, or urine-based biochemical markers may be used as noninvasive and objective measures to diagnose patients. In these settings, there are a range of confounding factors associated with noninvasive biochemical markers which need to be discussed and considered, to provide the right context for evaluating the potential value of biomarkers [7].

This narrative review sets out to review current and potential biomarkers for use in OA with focus on cartilage-derived type II collagen and aggrecan markers. We have searched PubMed for recent papers and selected a few to highlight as examples of the research conducted to develop and test biomarkers for OA.

## OSTEOARTHRITIS – THE STORY IS EVOLVING

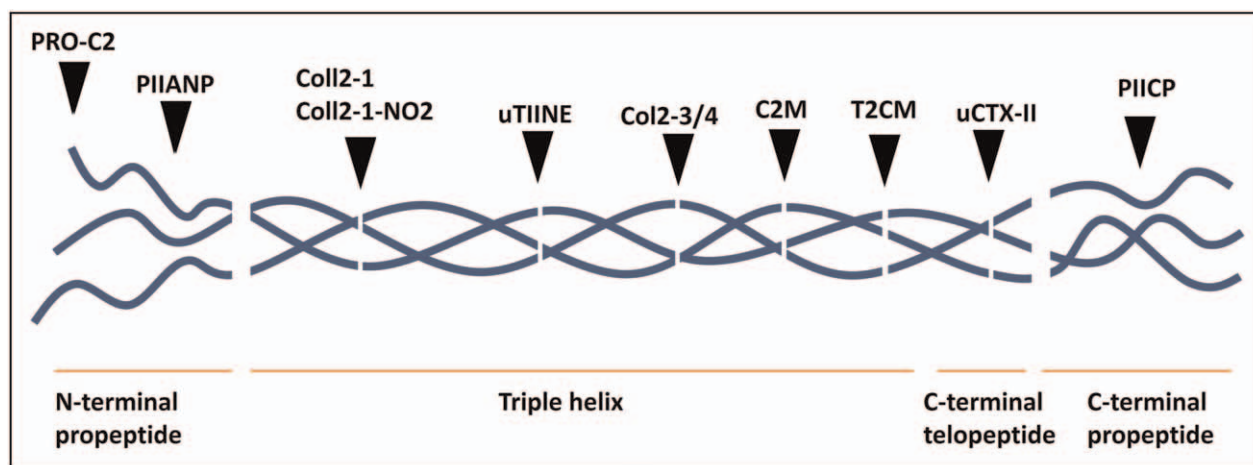
A long list of biomarkers has been tested in OA for different purposes and listed in several recent reviews [7–9]. For the purpose of a concise description, we will only describe type II collagen and aggrecan, which are the main components of cartilage although other proteins may be of equal interest.

### Type II collagen – keeping it together

Type II collagen is the most abundant protein in cartilage [10]. It is a fibrillar collagen that acts as the structural framework of the cartilage extracellular matrix (ECM). Collagen attracts attention as its turnover is directly associated with cartilage homeostasis and joint health. Several markers have been developed targeting different soluble metabolites and posttranslational modifications of type II collagen (Fig. 1).

### Formation of type II collagen

As the collagen matures both the N- and C-terminal propeptides are cleaved off (Fig. 1). Alternative splicing of the first three exons results in two types of the noncollagenous N-terminal pro-peptide—types IIA and IIB. Type IIA is the embryonic variant in which the cysteine-rich region, exon 2, is retained, whereas type IIB is the variant present in mature articular cartilage [11]. Markers that measure either of the two splice variants have been developed. The PIIANP assay targets the A form of the splice variant [12]. In the OA biomarker project, Foundation for the National Institutes of Health (FNIH, US) study, baseline serum levels of PIIANP were found to be negatively associated with two-year radiographic progression when assessed in 600 OA patients [13]. An immuno-assay specific for PIIBNP was recently developed [14,15]. The PRO-C2 assay, targeting an epitope at the junction site of exons 1 and 3, only measures released PIIBNP. Compared with healthy controls ( $n=22$ ), PRO-C2 and PIIANP in serum samples were lower in knee OA patients with a KL grade of 2–4 ( $n=123$ ) [15]. Assessed two independent knee OA cohorts of 106 and 147 participants, Luo *et al.* reported that low serum levels of PRO-C2 were associated with 3.4-fold higher likelihood of radiographic progression than those with high levels of PRO-C2 [16<sup>\*</sup>]. This suggests that low cartilage repair capacity, assessed by markers such as PRO-C2 and PIIANP, is a risk factor for OA. The idea of low cartilage formation being associated with OA severity and progression was already proposed two decades ago by Garnero *et al.*, who showed that the ratio between type II collagen synthesis measured by PIIANP and degradation measured by uCTX-II was



**FIGURE 1.** Type II collagen and its biomarkers. Type II collagen is a fibrillar collagen composed of three alpha 1 chains. It has been targeted extensively for biomarker development as it is cleaved at multiple locations in the triple helical and telopeptide regions. Type II collagen has N- and C-terminal propeptides, which are cleaved off at maturation; their measurement reflects cartilage formation.

altered in OA [17]. Moreover, these data are now appreciated as indications of different endotypes in OA. PIICP has also been suggested to be a marker of cartilage formation, however to date, it has mainly been assessed in preclinical settings and posttraumatic injury cohorts.

### Degradation of type II collagen

The N- and C-telopeptide, of which the C-terminal telopeptide contains the lysine residue used for inter-crosslinking, are still present on the mature secreted and cartilage-incorporated type II collagen (Fig. 1) [18]. Matrix metalloproteinases (MMPs), including collagenases and gelatinases, are the main ‘actors’ in type II collagen degradation. In particular, MMP-1, -8, and -13 cleave the site between glycine775 and leucine776, the primary cleavage site in the collagen triple helix, resulting in the unwinding of the helix. This cleavage generates two new peptides that are 3/4 and 1/4 the length of the original mature type II collagen. Both the primary cleavage and the further secondary processing of these domains produce fragments that are believed to be released to circulation and can be targeted via their newly generated neoepitopes [19].

Billinghurst *et al.* generated the C1,2C (also denoted as COL2-3/4Cshort) assay, which targets a neoepitope located at the C-terminus of the collagenase-generated 3/4 fragment [20]. Quantification of C1,2C in cartilage from OA patients and healthy controls in which type II collagen has been extracted showed an increase in C1,2C levels in OA cartilage compared to the healthy samples [20]. However, the C1,2C assay is limited by cross-reactivity toward type I collagen (“the bone collagen”). To address this cross-reactivity, a sandwich ELISA, uTIINE, was

developed that targets a type II collagen-specific epitope upstream of the 3/4 cleavage sites. UTIINE was detected in 9/10 OA patients but only in 2/10 of healthy controls [21], indicating diagnostic potential for the assay. Since the development of the assay, the cleavage was found to be mainly mediated by MMP-13 activity [21]. uTIINE was able to distinguish between OA patients and healthy controls, as well as between symptomatic and asymptomatic radiographic OA patients [21]. Furthermore, in a randomized controlled trial testing doxycycline treatment in 120 obese knee OA patients, increased uTIINE levels were associated with increased JSN [22].

Another collagen type II assay, the C2C assay, quantifies an elongated version of the C1,2C target sequence, which—in contrast to C1,2C—is specific toward type II collagen. There have been several recent reports indicating that C2C measured in serum or urine (C2C-HUSA) is associated with radiographic OA progression [13]. Poole *et al.* reported that urinary C2C was significantly higher in progressors compared to nonprogressors after a 3-year follow-up period [23]. In the OAI-FNIH study only urinary C2C (C2C-HUSA) but not serum C2C was associated with knee OA progression [13].

The biomarker Coll2-1 targeting an epitope located in the N-terminal triple helical region of the 3/4 fragment is another cartilage degradation marker being tested in OA. The targeted epitope contains a tyrosine residue that is susceptible to nitration, resulting in the release of the neo-epitope Coll2-1-NO2. Increased levels of oxidative and inflammatory stress have been detected in OA and rheumatoid arthritis, suggesting that posttranslational species of ECM markers, such as Coll2-1-NO2, could provide more specificity to the markers

for reflecting molecular pathways [24]. Further investigations of this association were performed in a follow-up study, in which an increase in urinary Coll2-1 levels was recently shown to be correlated to subscores of Whole-Organ Magnetic Resonance Imaging Score (WORMS), amongst other articular cartilage integrity and osteophyte scores [25<sup>■</sup>]. In multivariate analysis of the 19 available markers measured in the FNIH cohort, Liem *et al.* reported that Coll2-1-NO2 together with three other markers (CS846, COMP and uCTX-II), were independently associated with radiographic OA severity [26].

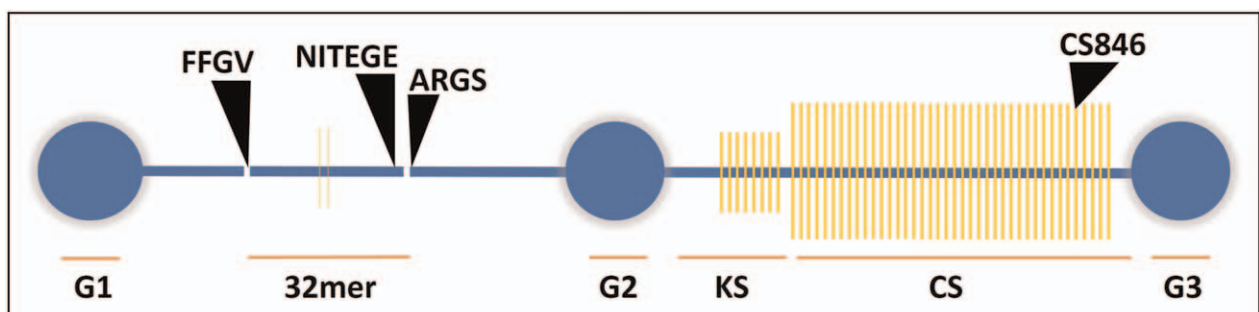
The C2M biomarker was identified by mass spectrometric analysis of the fragments generated by MMP-9 cleavage of healthy human cartilage [27]. C2M reflects a neopeptide located in the C-terminus of the 1/4 fragment close to the C-terminal domain [28]. Serum C2M has been reported to be higher in patients with radiographic knee OA compared with healthy controls. However, recent reports indicate that this marker is highly elevated in rheumatoid arthritis and ankylosis spondylitis, rather than OA, thus it may find its home in that corner of rheumatology.

uCTX-II is probably the most well-described biomarker of type II collagen [29]. Measurements of urinary uCTX-II were able to distinguish between OA patients and healthy controls and between OA patients with slowly and rapidly progressing disease [17,29]. Kraus *et al.* showed that baseline uCTX-II was able to predict both symptomatic and radiographic knee OA progression [13]. These findings were confirmed by a recent meta-analysis by Huan *et al.*, which concluded that uCTX-II levels were higher in OA patients than in healthy controls and that uCTX-II levels increased with disease progression [76]. A very recent metaanalysis by Cheng *et al.* summarized the value of uCTX-II. By pooling data from 2856 participants, they found uCTX-II to

be higher in patient with severe OA compared to patients with moderate OA [30<sup>■</sup>]. Interestingly, they also found that uCTX-II performed better in females vs. males, and in European vs. Asian populations. This highlights the importance of including variables related to human diversity, such as sex and race, at a minimum, as covariates in evaluations of the diagnostic value of novel biomarkers. In addition, uCTX-II has been applied in DMOAD trials, as demonstrated by Manicourt *et al.* wherein change in uCTX-II levels correlated with the treatment-mediated change in disease status; and as demonstrated by Karsdal *et al.* and Bihlet *et al.*, examining the effect of oral salmon calcitonin (sCT) on Lequesne algofunctional index scores in patients with knee OA and its association with pain and radiographic outcomes [31–33]. There have been several attempts to develop a serum CTX-II assay, however with limited success. T2CM is a recently discovered serum marker targeting a neopeptide generated by MMP-13 by cleavage of the C-terminal end of the triple helix close to the telopeptide end [34]. The first results show that T2CM is increased in patients scheduled for joint replacement compared to patients with moderate OA. In addition, the levels of T2CM were significantly decreased in response to sCT compared to placebo [34].

## AGGREGAN – A STORY OF ITS OWN

Aggrecan is the main ECM glycoprotein of articular cartilage (Fig. 2) [35]. Aggrecan is a protein that has been modified with large polyanionic carbohydrates, primarily chondroitin sulfate. It binds to hyaluronic acid and link proteins [36] and draws cations and osmotically obliged water into the ECM; this creates a hydrated gel, that gives the cartilage its compressive strength. Aggrecan is important for the physiochemistry and biology of the cartilage, it is



**FIGURE 2.** Aggrecan and its biomarkers. Aggrecan consists of three globular domains – G1-3, and two interglobular domains. The C-terminal interglobular domain contains keratan sulfate (KS) and chondroitin sulfate (CS) rich areas. MMP and ADAMTS cleavage fragments released from the N-terminal interglobular domain have been targeted for biomarker development (FFGV generated by MMPs, and NITEGE and ARGS by ADAMTS). The 32mer fragment from FFGV to NITEGE has been reported to have signaling functions. CS846 has been proposed to be a marker of aggrecan formation.

not just a structural glycoprotein. Three globular domains (G1, G1 and G3) make up aggrecan together with carbohydrate recognition domains, epidermal growth factor-like domains, complement binding protein-like domains, immunoglobulin folds and proteoglycan tandem repeats in the inter-globular domains [37] (see Fig. 2 highlighting the most well-described aggrecan cleavage sites by A Disintegrin And Metalloproteinase with Thrombospondin motifs (ADAMTS') and MMPs).

There is disagreement regarding the relationship of the two aggrecanases, ADAMTS-4 and ADAMTS-5, with respect to how they fit into the pathology of OA, loss of cartilage and aggrecan. Bondeson *et al.* [38] have highlighted that in murine OA, induced by antigen or surgical joint destabilization, ADAMTS4-null mice had no protective effect on cartilage aggrecan loss in contrast to ADAMTS5-null mice. ADAMTS-5 and ADAMTS-4 mRNA are expressed by freshly isolated human OA synovial cells and ADAMTS-5 by freshly isolated human OA chondrocytes [39]. Both ADAMTS-4 and -5 cleave aggrecan but they are different enzymes regarding their regulation.

Although insoluble type II collagen turns over slowly after skeletal maturity, aggrecan is very regenerative, thus its degradation is in theory, reversible [40]. Heinemeier *et al.* [41] elegantly demonstrated that bomb pulse  $^{14}\text{C}$  levels in insoluble type II collagen from articular cartilage remained nearly unchanged from the age of 13 and found that OA seemed to have practically zero impact on the turnover of insoluble type II collagen after this age.  $^{14}\text{C}$  levels in the proteoglycan component of cartilage were practically like atmospheric  $^{14}\text{C}$  levels during biopsy extraction. This important finding indicated that preservation, healing, and modification of cartilage tissue is primarily possible for the proteoglycan component but not the insoluble collagen component in skeletally mature individuals.

Within OA, aggrecan destruction has importance and is an important structural protein in the cartilage ECM. Fosang *et al.* have described aggrecan mutations in mice that prohibited cartilage degradation with only a bit of loss of collagen [42]. Recent data by Reker *et al.* [43] showed that fibroblast growth factor 18 induced a biphasic remodeling process in OA cartilage explants characterized by an increase in aggrecanase degradation of aggrecan reflected by the biomarker AGNx-1 (NITEGE, Fig. 2) paralleling the initial decrease in type II collagen formation marker PRO-C2 in the first three weeks of culture. This was followed by a decrease in AGNx-I and an increase in PRO-C2 the remaining 7 weeks of culturing [43]. Thus, the anabolic process of cartilage aggrecan restructuring is

thus very dynamic. A direct causal relationship has also been suggested between aggrecan destruction, binding of aggrecan fragments to the toll-like receptor-2, IL-6 induction, and pain [44], which could provide a temporal link between disease associated tissue activity and OA symptoms

### **Assessing A Disintegrin And Metalloproteinase with Thrombospondin activity by quantifying the ARGs neo-epitope**

#### **Degradation of aggrecan**

The degradome profile of aggrecan is extremely complex, but this is possibly one of the most investigated ECM glycoproteins despite the complexity. A range of biomarkers have been developed for the assessment of aggrecan destruction (Fig. 2). The aggrecan inter-globular domain displays several cleavage sites susceptible to MMPs, ADAMTS', serine, and cysteine proteases [45]. Multiple protease cleavage sites have been found in the aggrecan G1-G2 domain [35]. These different cleavage sites give rise to neo-epitopes, for example, FFGV (AGNx-2), NITEGE (AGNx-1) and ARGs, which have been targeted as biomarkers of cartilage turnover. Although markers assessing FFGV and NITEGE seem to be stuck in the preclinical space, ARGs has been measured in several clinical studies during the last three decades. Below we will discuss some of the more recent studies. There are also several cleavage sites in the G2-G3 domain, however, these targets are less well-described in the literature, potentially due to the inaccessible nature of the highly glycosylated domain.

The marker ARGs released from aggrecan because of protein cleavage by ADAMTS' and several assays are available measuring the fragment in serum or plasma. It is generally considered a marker of cartilage degradation although, as discussed above and shown by Reker *et al.*, it could also be a marker of cartilage remodeling. Consequently, although generation of the ARGs cleavage site is a direct consequence of ADAMTS activity, interpretation of protease cleavage sites and the relevant pharmacology need to be carefully evaluated. An alternate cleavage pattern by compensatory proteases is sometimes induced when a protein cannot be remodeled by one protease, resulting in an alternative cleavage pattern, such as the MMP cleavage of aggrecan. A similar observation, related to type I collagen, has already been made during the clinical development of Cathepsin K inhibitors for osteoporosis. CTX-I is a bone resorption biomarker generated by Cathepsin K activity on type I collagen [46]; Cathepsin K inhibition reduced the

pharmacodynamic biomarker, CTX-I, more than 90%, whereas another biomarker of type I collagen destruction by MMPs, ICTP, was elevated. Thus, in addition to ADAMTS-5, ADAMTS-4, other proteases may be involved in pathological turnover of aggrecan thereby requiring a multiprotease inhibition strategy to successfully slow OA based on this target. Alternative biomarkers of type II collagen and other fragments of aggrecan destruction likely need to be investigated in the context of any aggrecanase inhibition trial to lower this risk.

### Formation of aggrecan

Unlike type II collagen, aggrecan does not have propeptides which are released upon maturation of the protein. CS846 has been proposed as a marker of aggrecan formation, although the original literature described this epitope as a marker of aggrecan turnover [47]. CS846 was amongst four of 19 biomarkers tested in the OAI-FNIH cohort that was independent associated with radiographic OA [26]. CS846 was decreased modestly in response to collagen hydrolysate compared to controls, which contrasted with PIIANP which was elevated [48]. These data may indicate a disconnect between aggrecan and type II collagen formation.

### ON A SIDE NOTE

Type II collagen and aggrecan are not the only proteins for which tissue associated markers have been developed and tested during the last decades. It is worth mentioning markers such as COMP, measuring the turnover of the cartilage oligomeric matrix protein in blood. It seems to be highly elevated after traumatic injury and moderate to high with impact exercise [13,49,50]. CRPM, which measures a metabolite of C-reactive protein, is also elevated in a subset of OA patients and associated with disease progression [51–53]. In addition, several markers reflecting bone and synovial turnover and inflammation have been and are currently being tested in wide range of OA cohorts. Each of these deserve a review of its own.

### CONCLUSION

Type II collagen and aggrecan are likely the most studied cartilage proteins with respect to developing biomarkers. Some biomarkers have been tested for their association with disease severity, others for their prognostic and pharmacodynamic ability. There is no doubt that many of the markers are good for understanding biology, however, there is a lack of markers that have reached the level of IVD use. Only a few of the markers discussed here have been tested in

the context of identifying OA endotypes. This may be a field where serum and urine markers have the ability to provide groundbreaking value.

### Acknowledgements

*We would like to acknowledge our peers in the OA field who continue to inspire our work on OA biomarkers.*

### Financial support and sponsorship

*Nordic Bioscience is a partner, and A.C.B.J. and A.M. work are package leaders in the IMI-APPROACH consortium aiming to validate biomarkers for OA under the grant Agreement n° 115770, (<https://www.approach-project.eu/>). V.B.K.' effort for this work is partially supported by grant NIH/NIA P30AG028716.*

### Conflicts of interest

*A.C.B.J., C.S.T. and M.A.K. are full-time employees and shareholders of Nordic Bioscience, a privately owned biotechnology company involved in the development of biomarkers for OA. There are no conflicts of interests for the remaining authors.*

### REFERENCES AND RECOMMENDED READING

Papers of particular interest, published within the annual period of review, have been highlighted as:

- of special interest
- of outstanding interest

1. Cross M, Smith E, Hoy D, *et al.* The global burden of hip and knee osteoarthritis: estimates from the Global Burden of Disease 2010 study. *Ann Rheum Dis* 2014; 73:1323–1330.
2. Lotz M, Martel-Pelletier J, Christiansen C, *et al.* Value of biomarkers in osteoarthritis: current status and perspectives. *Ann Rheum Dis* 2013; 72:1756–1763.
3. Siebuhr ASAS, He Y, Gudmann NSNS, *et al.* Biomarkers of cartilage and surrounding joint tissue. *Biomark Med* 2014; 8:713–731.
4. Karsdal MA, Bay-Jensen AC, Lories RJ, *et al.* The coupling of bone and cartilage turnover in osteoarthritis: Opportunities for bone antiresorptives and anabolics as potential treatments? *Ann Rheum Dis* 2014; 73:336–348.
5. Bay-Jensen AC, Thudium CS, Gualillo O, *et al.* Biochemical marker discovery, testing and evaluation for facilitating OA drug discovery and development. *Drug Discov Today* 2018; 23:349–358.
6. Karsdal MA, Michaelis M, Ladel C, *et al.* Disease-modifying treatments for osteoarthritis (DMOADs) of the knee and hip: lessons learned from failures and opportunities for the future. *Osteoarthr Cartil* 2016; 24:2013–2021.
7. Kraus VB, Karsdal MA. Osteoarthritis: current molecular biomarkers and the way forward. *Calcif Tissue Int* 2020; 109:329–338.
8. Bay-Jensen AC, Thudium CS, Mobasher A. Development and use of biochemical markers in osteoarthritis: current update. *Curr Opin Rheumatol* 2018; 30:121–128.
9. Martel-Pelletier J, Tardif G, Paiement P, *et al.* Common biochemical and magnetic resonance imaging biomarkers of early knee osteoarthritis and of exercise/training in athletes: a narrative review. *Diagnostics* 2021; 11:1488.
10. Eyre D. Collagen of articular cartilage. *Arthritis Res* 2002; 4:30–35.
11. Sandell LJ, Morris N, Robbins JR, *et al.* Alternatively spliced type II procollagen mRNAs define distinct populations of cells during vertebral development: differential expression of the amino-propeptide. *J Cell Biol* 1991; 114:1307–1319.
12. Rousseau JC, Sandell LJ, Delmas PD, *et al.* Development and clinical application in arthritis of a new immunoassay for serum type IIA procollagen NH2 propeptide. *Methods Mol Med* 2004; 101:25–37.
13. Kraus VB, Collins JE, Hargrove D, *et al.* Predictive validity of biochemical biomarkers in knee osteoarthritis: data from the FNIH OA Biomarkers Consortium. *Ann Rheum Dis* 2017; 76:186–195.

14. Gudmann NS, Wang J, Hoielt S, *et al*. Cartilage turnover reflected by metabolic processing of type II collagen: a novel marker of anabolic function in chondrocytes. *Int J Mol Sci* 2014; 15:18789–18803.
15. Luo Y, He Y, Reker D, *et al*. A novel high sensitivity type II collagen blood-based biomarker, PRO-C2, for assessment of cartilage formation. *Int J Mol Sci* 2018; 19:1–15.
16. Luo Y, Samuels J, Krasnokutsky S, *et al*. A low cartilage formation and repair endotype predicts radiographic progression of symptomatic knee osteoarthritis. *J Orthop Traumatol* 2021; 22:10.
- An example of a cartilage marker which seem to describe specific endotype in OA - the low cartilage repair endotype
17. Garnero P, Ayrál X, Rousseau JC, *et al*. Uncoupling of type II collagen synthesis and degradation predicts progression of joint damage in patients with knee osteoarthritis. *Arthritis Rheum* 2002; 46:2613–2624.
18. Gelse K, Pöschl E, Aigner T. Collagens - structure, function, and biosynthesis. *Adv Drug Deliv Rev* 2003; 55:1531–1546.
19. Dahlberg L, Billingham RC, Webb G, *et al*. Selective enhancement of collagenase-mediated cleavage of resident type II collagen in cultured osteoarthritic cartilage and arrest with a synthetic inhibitor that spares collagenase 1 (Matrix metalloproteinase 1). *Arthritis Rheum* 2000; 43:673–682.
20. Billingham RC, Dahlberg L, Ionescu M, *et al*. Enhanced cleavage of type II collagen by collagenases in osteoarthritic articular cartilage. *J Clin Invest* 1997; 99:1534–1545.
21. Nemirovskiy OV, Dufield DR, Sunyer T, *et al*. Discovery and development of a type II collagen neopeptide (TIINE) biomarker for matrix metalloproteinase activity: from in vitro to in vivo. *Anal Biochem* 2007; 361:93–101.
22. Hellio Le Graverand MP, Brandt KD, Mazzuca SA, *et al*. Association between concentrations of urinary type II collagen neopeptide (uTIINE) and joint space narrowing in patients with knee osteoarthritis. *Osteoarthr Cartil* 2006; 14:1189–1195.
23. Robin Poole A, Ha N, Bourdon S, *et al*. Ability of a urine assay of type II collagen cleavage by collagenases to detect early onset and progression of articular cartilage degeneration: Results from a population-based cohort study. *J Rheumatol* 2016; 43:1864–1870.
24. Mobasheri A, Lambert C, Henrotin Y. Coll2-1 and Coll2-1NO2 as exemplars of collagen extracellular matrix turnover—biomarkers to facilitate the treatment of osteoarthritis? *Expert Rev Mol Diagn* 2019; 19:803–812.
25. Hick AC, Malaise M, Loeuille D, *et al*. Cartilage Biomarkers Coll2-1 and Coll2-1NO2 are associated with knee OA MRI features and are helpful in identifying patients at risk of disease worsening. *Cartilage* 2021. doi: 10.1177/19476035211021892. [Online head of print]
- One of the newest paper characterising well know cartilage markers.
26. Liem Y, Judge A, Kirwan J, *et al*. Multivariable logistic and linear regression models for identification of clinically useful biomarkers for osteoarthritis. *Sci Rep* 2020; 10:11328.
27. Zhen EY, Brittain IJ, Laska DA, *et al*. Characterization of metalloprotease cleavage products of human articular cartilage. *Arthritis Rheum* 2008; 58:2420–2431.
28. Bay-Jensen A-C, Liu Q, Byrjalsen I, *et al*. Enzyme-linked immunosorbent assay (ELISAs) for metalloproteinase derived type II collagen neopeptide, CIIM-Increased serum CIIM in subjects with severe radiographic osteoarthritis. *Clin Biochem* 2011; 44:423–429.
29. Garnero P, Conrozier T, Christgau S, *et al*. Urinary type II collagen C-telopeptide levels are increased in patients with rapidly destructive hip osteoarthritis. *Ann Rheum Dis* 2003; 62:939–943.
30. Cheng HB, Hao B, Sun J, *et al*. C-terminal cross-linked telopeptides of Type II collagen as biomarker for radiological knee osteoarthritis: a meta-analysis. *Cartilage* 2020; 11:512–520.
- This collect data and thereby evidence for the use of CTX-II markers as a biomarker for OA radiographic severity
31. Manicourt DH, Azria M, Mindeholm L, *et al*. Oral salmon calcitonin reduces Lequesne's algofunctional index scores and decreases urinary and serum levels of biomarkers of joint metabolism in knee osteoarthritis. *Arthritis Rheum* 2006; 54:3205–3211.
32. Karsdal MA, Henriksen K, Bay-Jensen AC, *et al*. Lessons learned from the development of oral calcitonin: The first tablet formulation of a protein in phase III clinical trials. *J Clin Pharmacol* 2011; 51:460–471.
33. Bihlet AR, Byrjalsen I, Bay-Jensen AC, *et al*. Associations between biomarkers of bone and cartilage turnover, gender, pain categories and radiographic severity in knee osteoarthritis. *Arthritis Res Ther* 2019; 21:203.
34. Groen SS, Sinkeviciute D, Bay-Jensen A-C, *et al*. A serological type II collagen neopeptide biomarker reflects cartilage breakdown in patients with osteoarthritis. *Osteoarthr Cartil* 2021; 3:100207.
35. Heinegård D, Saxne T. The role of the cartilage matrix in osteoarthritis. *Nat Rev Rheumatol* 2011; 7:50–56.
36. Kiani C, Chen L, Wu YJ, *et al*. Structure and function of aggrecan. *Cell Res* 2002; 12:19–32.
37. Perkins SJ, Nealis AS, Dudhia J, *et al*. Immunoglobulin fold and tandem repeat structures in proteoglycan N-terminal domains and link protein. *J Mol Biol* 1989; 206:737–753.
38. Bondeson J, Wainwright S, Hughes C, *et al*. The regulation of the ADAMTS4 and ADAMTS5 aggrecanases in osteoarthritis: a review. *Clin Exp Rheumatol* 2008; 26:139–145.
39. Chou CH, Jain V, Gibson J, *et al*. Synovial cell cross-talk with cartilage plays a major role in the pathogenesis of osteoarthritis. *Sci Rep* 2020; 10:10868.
40. Karsdal MA, Madsen SH, Christiansen C, *et al*. Cartilage degradation is fully reversible in the presence of aggrecanase but not matrix metalloproteinase activity. *Arthritis Res Ther* 2008; 10:R63.
41. Heinemeier KM, Schjerling P, Heinemeier J, *et al*. Radiocarbon dating reveals minimal collagen turnover in both healthy and osteoarthritic human cartilage. *Sci Transl Med* 2016; 8:346ra90.
42. Little CB, Meeker CT, Golub SB, *et al*. Blocking aggrecanase cleavage in the aggrecan interglobular domain abrogates cartilage erosion and promotes cartilage repair. *J Clin Invest* 2007; 117:1627–1636.
43. Reker D, Siebuhr AS, Thudium CS, *et al*. Sprifermin (rhFGF18) versus vehicle induces a biphasic process of extracellular matrix remodeling in human knee OA articular cartilage ex vivo. *Sci Rep* 2020; 10:6011.
44. Miller RE, Ishihara S, Tran PB, *et al*. An aggrecan fragment drives osteoarthritis pain through Toll-like receptor 2. *JCI Insight* 2018; 3:e95704.
45. Hardingham TE, Fosang AJ. The structure of aggrecan and its turnover in cartilage. *J Rheumatol* 1995; 43:86–90.
46. Henriksen K, Tanko LB, Qvist P, *et al*. Assessment of osteoclast number and function: application in the development of new and improved treatment modalities for bone diseases. *Osteoporos Int* 2007; 18:681–685.
47. Mazzuca SA, Poole AR, Brandt KD, *et al*. Associations between joint space narrowing and molecular markers of collagen and proteoglycan turnover in patients with knee osteoarthritis. *J Rheumatol* 2006; 33:1147–1151.
48. McAlindon T, Bartnik E, Ried JS, *et al*. Determination of serum biomarkers in osteoarthritis patients: a previous interventional imaging study revisited. *J Biomed Res* 2017; 31:25–30.
49. Bjerre-Bastos JJ, Nielsen HB, Andersen JR, *et al*. Does moderate intensity impact exercise and nonimpact exercise induce acute changes in collagen biochemical markers related to osteoarthritis? – an exploratory randomized cross-over trial. *Osteoarthr Cartil* 2021; 29:986–994.
50. Erhart-Hledik JC, Titchenal MR, Migliore E, *et al*. Cartilage oligomeric matrix protein responses to a mechanical stimulus associate with ambulatory loading in individuals with anterior cruciate ligament reconstruction. *J Orthop Res* 2021. doi: 10.1002/jor.25121. [Online head of print]
51. Alexander LC, McHorse G, Huebner JL, *et al*. A matrix metalloproteinase-generated neopeptide of CRP can identify knee and multijoint inflammation in osteoarthritis. *Arthritis Res Ther* 2021; 23:226.
52. Bay-Jensen AC, Bihlet A, Byrjalsen I, *et al*. Serum C-reactive protein metabolite (CRPM) is associated with incidence of contralateral knee osteoarthritis. *Sci Rep* 2021; 11:6583.
53. Yang X, Thudium CS, Bay-Jensen A-C, *et al*. Association between markers of synovial inflammation, matrix turnover and symptoms in knee osteoarthritis: a cross-sectional study. *Cells* 2021; 10:1826.