



# Identification and pathogenicity of *Alternaria* species associated with leaf blotch disease and premature defoliation in French apple orchards

Kévin Fontaine<sup>1</sup>, Céline Fourrier-Jeandel<sup>1</sup>, Andrew D. Armitage<sup>2</sup>, Anne-Laure Boutigny<sup>3</sup>, Manuela Crépet<sup>4</sup>, Valérie Caffier<sup>5</sup>, Dossi Carine Gnide<sup>1</sup>, Jason Shiller<sup>5</sup>, Bruno Le Cam<sup>5</sup>, Michel Giraud<sup>6</sup>, Renaud Ioos<sup>1</sup> and Jaime Aguayo<sup>1</sup>

<sup>1</sup> ANSES, Laboratoire de la Santé des Végétaux, Unité de Mycologie, USC INRAE 1480, Malzéville, France

<sup>2</sup> Natural Resources Institute, University of Greenwich, Chatham Maritime, Kent, United Kingdom

<sup>3</sup> ANSES, Laboratoire de la Santé des Végétaux, Unité Bactériologie, Virologie et OGM, Angers, France

<sup>4</sup> FREDON Rhône-Alpes, Saint-Priest, France

<sup>5</sup> Université d'Angers, Institut Agro, INRAE, IRHS, SFR QUASAV, Angers, France

<sup>6</sup> Centre opérationnel de Lanxade, CTIFL, Prignonrieux, France

## ABSTRACT

Leaf blotch caused by *Alternaria* spp. is a common disease in apple-producing regions. The disease is usually associated with one phylogenetic species and one species complex, *Alternaria alternata* and the *Alternaria arborescens* species complex (*A. arborescens* SC), respectively. Both taxa may include the *Alternaria* apple pathotype, a quarantine or regulated pathogen in several countries. The apple pathotype is characterized by the production of a host-selective toxin (HST) which is involved in pathogenicity towards the apple. A cluster of genes located on conditionally dispensable chromosomes (CDCs) is involved in the production of this HST (namely *AMT* in the case of the apple pathotype). Since 2016, leaf blotch and premature tree defoliation attributed to *Alternaria* spp. have been observed in apple-producing regions of central and south-eastern France. Our study aimed to identify the *Alternaria* species involved in apple tree defoliation and assess the presence of the apple pathotype in French orchards. From 2016 to 2018, 166 isolates were collected and identified by multi-locus sequence typing (MLST). This analysis revealed that all these French isolates belonged to either the *A. arborescens* SC or *A. alternata*. Specific PCR detection targeting three genes located on the CDC did not indicate the presence of the apple pathotype in France. Pathogenicity was assessed under laboratory conditions on detached leaves of Golden Delicious and Gala apple cultivars for a representative subset of 28 *Alternaria* isolates. All the tested isolates were pathogenic on detached leaves of cultivars Golden Delicious and Gala, but no differences were observed between the pathogenicity levels of *A. arborescens* SC and *A. alternata*. However, the results of our pathogenicity test suggest that cultivar Golden Delicious is more susceptible than Gala to *Alternaria* leaf blotch. Implications in the detection of the *Alternaria* apple pathotype and the taxonomic assignment of *Alternaria* isolates involved in *Alternaria* leaf blotch are discussed.

Submitted 13 July 2021  
Accepted 25 October 2021  
Published 1 December 2021

Corresponding author  
Jaime Aguayo, [jaime.aguayo@anses.fr](mailto:jaime.aguayo@anses.fr)

Academic editor  
Tika Adhikari

Additional Information and  
Declarations can be found on  
page 16

DOI 10.7717/peerj.12496

© Copyright  
2021 Fontaine et al.

Distributed under  
Creative Commons CC-BY 4.0

OPEN ACCESS

**Subjects** Agricultural Science, Molecular Biology, Mycology, Plant Science

**Keywords** *Alternaria* leaf blotch, *Alternaria* fruit spot, *Alternaria arborescens* species complex, *Alternaria alternata*, *Alternaria* section *Alternaria*, Small-spored *Alternaria*, Plant pathology, Pathogenic fungi, Molecular biology, Pathogenicity of plant pathogens

## INTRODUCTION

*Alternaria* spp. are ubiquitous fungi comprising approximately 300 different species (Simmons, 2007; Woudenberg et al., 2013). The genus has different lifestyles and can be isolated from a large number of substrates (Thomma, 2003; Woudenberg et al., 2013). *Alternaria* spp. are major pathogenic fungi in agriculture and the food industry, leading to serious diseases in many economically important crops (Meena et al., 2017; Thomma, 2003).

Different taxa of *Alternaria* have been associated with *Alternaria* leaf blotch (ALB) and *Alternaria* fruit spot (AFS) diseases (Armitage et al., 2015; Gur, Reuveni & Cohen, 2017; Hartevelde, Akinsanmi & Drenth, 2013). ALB is characterized by the development of round or irregular brown spots on leaves, bordered by dark brown to purple margins (Rotondo et al., 2012). These symptoms generally start in late spring or early summer, developing to yellowing leaves that can lead to early tree defoliation and a premature fruit drop associated with a reduction in tree vigour and fruit quality over the following years (Hartevelde, Akinsanmi & Drenth, 2013; Rotondo et al., 2012). ALB may cause up to 80% of defoliation in some susceptible apple cultivars (Filajdić & Sutton, 1991) and consequently may drastically decrease fruit yields (Hartevelde, Akinsanmi & Drenth, 2013; Horlock, 2006). Less frequent, AFS is characterized by necrotic spots on the skin of the fruit surrounded by a red halo centered on the lenticels (Hartevelde, Akinsanmi & Drenth, 2013; Horlock, 2006; Rotondo et al., 2012) and in some cases can result in calyx cracking and fruit rot (Gur, Reuveni & Cohen, 2017). AFS may consequently downgrade the fruit's value, resulting in a significant financial burden to apple growers (Gur, Reuveni & Cohen, 2017; Hartevelde, Akinsanmi & Drenth, 2014).

Both ALB and AFS have been reported in nearly all apple-producing regions of the world (Dickens & Cook, 1995; Filajdić & Sutton, 1991; Gur, Reuveni & Cohen, 2017; Hartevelde, Akinsanmi & Drenth, 2013; Kim, Cho & Kim, 1986; Ozgonen & Karaca, 2006; Rotondo et al., 2012; Wenneker et al., 2018). Taxa causing ALB and AFS are part of the *Alternaria* section *Alternaria* that comprises the small-spored *Alternaria* species. As for the whole genus *Alternaria*, identification of isolates within the section *Alternaria* is challenging due to morphological plasticity and genetic similarity (Armitage et al., 2015; Lawrence et al., 2013; Woudenberg et al., 2013). However recent advances, especially in multi-gene phylogeny and comparative genomics, have allowed the different *Alternaria* sections to be redefined and delineated, with accurate molecular differentiation and identification of isolates (Armitage et al., 2020; Woudenberg et al., 2015a). Woudenberg et al. (2015a), for example, have shown that the *Alternaria* section *Alternaria* consists of 11 phylogenetic species and one species complex. The taxonomic implications of this study are major because 35 morphospecies, which could not be distinguished through multi-gene phylogeny, were synonymized under

*Alternaria alternata* (including the important plant pathogens *A. alternata*, *A. tenuissima* and *A. citri*).

ALB and AFS have been commonly associated with the phylogenetic species *A. alternata* and the *Alternaria arborescens* species complex (*A. arborescens* SC) (Gur, Reuveni & Cohen, 2017; Hartevelde, Akinsanmi & Drenth, 2013; Rotondo et al., 2012; Toome-Heller et al., 2018; Wenneker et al., 2018), with both taxa also known as saprophytic and generalist opportunistic pathogens affecting a variety of important crops (Armitage et al., 2015; Thomma, 2003). Both *A. alternata* and *A. arborescens* SC may include the apple pathotype, which has been recently shown to be polyphyletic (Armitage et al., 2020). The apple pathotype, formerly known as *Alternaria mali*, causes significant problems in apple orchards in south-eastern Asia (Li et al., 2019), was responsible for ALB in the south-eastern USA in the early nineties (Filajdić & Sutton, 1991) and has been associated with severe AFS in Israel (Gur, Reuveni & Cohen, 2017). It is also listed either as a quarantine or a regulated pathogen in several countries throughout the world (<https://gd.eppo.int>).

In *Alternaria*, pathotypes are characterized by the production of polyketide host-selective toxins (HSTs), which are linked to pathogenicity affecting specific hosts (Tsuge et al., 2013). To date, at least seven pathotypes have been described, each producing a unique HST essential to pathogenicity in apples (AMT), Japanese pears (AKT), strawberries (AFT), tangerines (ACT), tomatoes (AAL) rough lemons (ACR) and tobacco (AT) (Tsuge et al., 2013; Wang et al., 2019). The production of these HSTs involves a cluster of genes located on conditionally (or accessory) dispensable chromosomes (CDCs), so named because they are not essential for saprophytic growth and reproduction of pathogens (Hatta et al., 2002; Wang et al., 2019).

In the case of the apple pathotype, at least 17 genes could be involved in the synthesis of AMT apple toxin (Harimoto et al., 2007) but so far only four, i.e., AMT1, AMT2, AMT3 and AMT4, have been demonstrated to be involved in this process. To date, molecular detection of this pathotype is only possible by PCR targeting one of the genes involved in the production of the AMT apple toxin (Armitage et al., 2020; Harimoto et al., 2007; Johnson et al., 2000) or by identifying these genes in the genome of *Alternaria* isolates using bioinformatics (Armitage et al., 2020). However, molecular taxonomic assignment to either *A. alternata* or the *A. arborescens* SC in routine diagnostics requires the construction of multi-gene phylogenies (Armitage et al., 2015; Hartevelde, Akinsanmi & Drenth, 2013; Rotondo et al., 2012; Woudenberg et al., 2015a). Indeed, multi-locus sequence typing (MLST) with relevant phylogenetic markers for the *Alternaria* genus has been used to identify *A. alternata* and the *A. arborescens* SC. It has also enabled researchers to understand their association with ALB and AFS in several countries (Armitage et al., 2015; Gur, Reuveni & Cohen, 2017; Hartevelde, Akinsanmi & Drenth, 2013; Rotondo et al., 2012; Toome-Heller et al., 2018; Wenneker et al., 2018).

ALB has been observed for years in French orchards without causing serious damage. However, since 2016, significant defoliation in trees infected by *Alternaria* has been reported in regions of central and south-eastern France. The reported presence of the apple pathotype in northern Italy (Rotondo et al., 2012) has raised serious concerns for both the French plant health authorities and apple growers.

The first objective of this study was to assess whether the upsurge in ALB symptoms observed in French orchards was due to the emergence of the apple pathotype. To identify the pathogens responsible for these unusual cases of defoliation, we conducted MLST analyses to determine the phylogenetic position of the French *Alternaria* isolates. We also assessed the presence of the apple pathotype by PCR tests targeting two genes involved in the production of the *AMT* apple toxin, and a gene found in the apple pathotype CDC that has homologs in the pear and strawberry pathotypes (Armitage *et al.*, 2020). Pathogenicity tests were then carried out and Koch's postulates were assessed on the Gala and Golden Delicious apple cultivars using a representative panel of isolates. Finally, both the phylogenetic position and pathogenicity of the French *Alternaria* isolates were compared with *Alternaria* isolates from different countries and/or isolated from crops other than apple.

## MATERIALS & METHODS

### Isolate collection

French *Alternaria* spp. isolates (166) were obtained from symptomatic field samples of leaves (156) and fruit (10) collected from ten different apple cultivars or cultivar groups (Table 1, Supplemental Information 1). Apple orchards were located in four major apple-producing regions in central and south-eastern France: Auvergne-Rhône-Alpes (108 isolates), Provence-Alpes-Côtes d'Azur (49 isolates), Occitanie (8 isolates) and Nouvelle-Aquitaine (1 isolate). The samples were collected over 3 years (seasons 2016–17, 2017–18 and 2018–19, Table 1, Supplemental Information 1). Leaves and fruit surfaces were first disinfected with 70% ethanol and necrotic spots were excised using a sterile scalpel blade then plated onto Petri dishes containing malt extract agar (Sigma-Aldrich) medium supplemented with chloramphenicol (0.2 g/L). The cultures were incubated for four to seven days at 22 °C with a 12 h alternating dark and light cycling period. A plug of each actively growing culture was then transferred to a new malt extract agar Petri dish and incubated under the same conditions as described above. The isolate collection was supplemented with 43 *Alternaria* isolates either associated with ALB or AFS from Australia (16), Israel (eight), Italy (14) and New Zealand (five). Furthermore, the Food and Environmental Research Agency (FERA) contributed 12 isolates obtained from fruit importations showing AFS and intercepted in the UK (unknown origin). Nine additional ALB or AFS isolates were obtained from the Westerdijk Institute's collection (<https://www.wi.knaw.nl>). Other *Alternaria* isolates associated with post-harvest apple rot problems in Argentina (four) and South Africa (eight) were also included. Additionally, the collection was completed with *Alternaria* isolates from other hosts belonging to different botanical families (19 isolates). Five isolates in the collection were identified as apple pathotype isolates. All the isolates were single-spored before analysis. Details of the isolate collection studied in this work are presented in Supplemental Information 1.

### Genomic DNA extraction and loci sequencing

DNA extractions were performed with approximately 0.5 g of *Alternaria* mycelium, scraped from a fresh culture on malt extract, using the NucleoSpin Plant II kit (Macherey Nagel).

**Table 1** Distribution of *Alternaria* isolates obtained from French orchards from years 2016–2018. The table shows the apple cultivar, the number of samples, the taxa (*Alternaria arborescens* species complex (SC) or *Alternaria alternata*) and the co-occurrence of the isolates in the same orchard. The samples were identified by sequencing EndoPg and Alta-1.

Cultivar	No. of samples (including fruit samples)	<i>A. arborescens</i> SC	<i>A. alternata</i>	Co-occurrence/sample (including fruit samples)
Braeburn	2	4	4	1
Gala <sup>a</sup>	13 (2)	16	8	3
Golden Delicious	10	39	10	5
Canada <sup>b</sup>	9	14	17	3
Dalinette	4	5	12	4
Crimson <sup>c</sup>	4	2	8	1
Belchard	1	1	1	1
Pink Lady <sup>d</sup>	7 (3)	9	10	4 (2)
Garance	1	0	2	0
GoldRush	1	1	3	1
<b>Total</b>	<b>52 (5)</b>	<b>91</b>	<b>75</b>	<b>23</b>

**Notes.**

<sup>a</sup>cultivars Galastar and Royal Gala included.

<sup>b</sup>cultivar Reinette grise du Canada (Canada).

<sup>c</sup>cultivar Crimson Crisp included.

<sup>d</sup>cultivar Rosy Glow included.

Mycelium was ground by placing two sterilized steel beads (three mm in diameter) in an Eppendorf tube containing mycelium with 400  $\mu$ L of lysis buffer and 10  $\mu$ L of RNase (both provided with the DNA extraction kit). Samples were subsequently ground twice for 60 s at 30 Hz in a MM 400 mixer mill (Retch). DNA was extracted according to the manufacturer's instructions. The concentration of the DNA extracts (100  $\mu$ L final volume) was estimated with a NanoDrop TM 2000 Spectrophotometer (ThermoFisher). All the extracted DNA was stored at  $-30^{\circ}\text{C}$  until use. The endopolygalacturonase (EndoPG) and the *Alternaria* major allergen (Alta-1) genes, two loci commonly used in *Alternaria* identification and phylogenetics (Table 2, Armitage et al., 2015; Hartevelde, Akinsanmi & Drenth, 2013; Lawrence et al., 2013), were sequenced for all the isolates. In addition, the anonymous region OPA 10-2 (Table 2, Rotondo et al., 2012; Woudenberg et al., 2015a; Woudenberg et al., 2015b) was sequenced for a subset of 100 isolates and used to assess putative differences in taxonomic identification by comparison with EndoPG and Alta-1. For PCR amplification of the three loci, the reaction mixtures contained 1X PCR reaction buffer (HGS Diamond Taq, Eurogentec), 2.5 mM  $\text{MgCl}_2$  (4.0 mM for EndoPG),  $4 \times 0.25$  mM dNTPs, 0.2  $\mu$ M of forward and reverse primers (Table 2), 1 U of HGS diamond Taq (Eurogentec), 2  $\mu$ L of DNA extract and molecular grade water to complete up to 25  $\mu$ L. PCR conditions consisted of an initial denaturation step at  $95^{\circ}\text{C}$  for 10 min, followed by 40 cycles at  $94^{\circ}\text{C}$  for 45 s, annealing temperatures of  $57^{\circ}\text{C}$  for Alta-1,  $56^{\circ}\text{C}$  for EndoPG and  $62^{\circ}\text{C}$  for OPA 10-2 for 30 s (Table 2),  $72^{\circ}\text{C}$  for 1 min and a final extension step at  $72^{\circ}\text{C}$  for 7 min. The GENEWIZ sequencing platform (Leipzig, Germany) was used for bidirectional Sanger sequencing of the amplicons. Consensus sequences were obtained after manual correction using the Geneious R11 programme.

**Table 2** Characteristics of primer pairs used in this study for multi-locus sequence typing (MSLT) identification of isolates and specific PCR.

Locus/function	Primer	Primer sequence (5'-3')	Reference	Annealing temperature (°C)	Amplicon length (pb)
Alta-1/Alternaria major allergen 1	Alt-for	ATGCAGTTCACCACCATCGC	<i>Hong et al. (2005)</i>	57	472
	Alt-rev	ACGAGGGTGAYGTAGGCGTC			
EndoPG/Endopolygalacturonase	PG3	TACCATGGTTCTTTCCGA	<i>Andrew, Peever &amp; Pryor (2009)</i>	56	464
	PG2b	GAGAATTCRCARTCRTCYTGRTT			
OPA 10-2/Anonymous noncoding region	OPA10-2L	TCGCAGTAAGACACATTCTACG	<i>Andrew, Peever &amp; Pryor (2009)</i>	62	634
AMT-1/Non-ribosomal peptide synthetase	OPA10-2R	GATTCGCAGCAGGGAAACTA	<i>Johnson et al. (2000)</i>	65	496
	LinF1	TATCGCCTGGCCACCTACGC			
AMT-2/Aldo-keto reductase	LinR	TGGCCACGACAACCCACATA	<i>Roberts, Bischoff &amp; Reymond (2012)</i>	57	653
	AMT2-f2	GTTGCAGAATCGCAAACCTCA			
AMT-14/Unknown function	AMT2-r2	GGCTCTTGGTCTCAAATCCA	<i>Armitage et al. (2015)</i>	66	436
	AMT14-EMR-F	TTTCTGCAACGGCGKCGCTT			
	AMT14-EMR-R	TGAGGAGTYAGACCRGRGCG			

## Phylogenetic analysis

The EndoPG, Alta-1 and OPA 10-2 sequence datasets generated in our study were supplemented with data from previous studies. The sequence datasets that enabled taxonomic identification of isolates in these previous studies ([Armitage et al., 2015](#); [Gur, Reuveni & Cohen, 2017](#); [Harteveld, Akinsanmi & Drenth, 2013](#); [Rotondo et al., 2012](#); [Woudenberg et al., 2015a](#)) were used as a reference in our phylogenetic analysis. As we performed molecular identification using an MLST approach, we decided to use the taxonomy of the *Alternaria* section *Alternaria* proposed by [Woudenberg et al. \(2015a\)](#), which consists of 11 phylogenetic species and one species complex. In other words, we used the *Alternaria alternata* phylogenetic species without including any results of morphospecies (e.g., *A. tenuissima* was taxonomically assigned to the phylogenetic species *A. alternata*), an approach used in other studies that described isolates morphologically ([Armitage et al., 2015](#); [Rotondo et al., 2012](#)). DNA sequences were first analyzed with SeaView version 4 ([Gouy, Guindon & Gascuel, 2010](#)). These analyses included sequence alignments using MUSCLE ([Edgar, 2004](#)) and elimination of poorly aligned positions with Gblocks ([Talavera & Castresana, 2007](#)). MrBayes version 3.2 ([Ronquist et al., 2012b](#)) was used for multi-locus phylogeny analysis on concatenated sequences for EndoPG and Alta-1 (two-locus MSLT phylogenetic tree) and EndoPG, Alta-1 and OPA 10-2 (three-locus MLST phylogenetic tree) separately. Runs were performed under the Bayesian MCMC model jumping approach, which provides a convenient alternative to model selection before analysis (command `lset applyto= (all) nst=mixed`). In model jumping, the Markov Chain Monte Carlo (MCMC) sampler explores different models and weights the results according to the posterior probability of each model ([Ronquist, Huelsenbeck & Teslenko, 2012a](#)). Four MCMC chains were run using the default heating with tree sampling performed every 5,000 generations. Runs were performed for at least 20 million generations, and stopped when the standard deviation of split frequencies was below 0.01 ([Ronquist, Huelsenbeck & Teslenko, 2012a](#)). Homologous sequences of Alta-1 and Endo-PG for *A. brassicicola* (isolate Abra43) were used as an outgroup in all the generated trees. The consensus tree was obtained by using the command `sumt`. The resulting phylogenetic trees were visualised and annotated with the interactive tree of life (iTOL) online tool ([Letunic & Bork, 2016](#)). The taxonomic identification of 100 isolates using the concatenated trees EndoPg/Alta-1 and EndoPg/Alta-1/OPA 10-2 was compared with the function tanglegram implemented in DENDROSCOPE 3.2.10 ([Huson & Scornavacca, 2012](#)). A subset of single-locus sequence data for the corresponding loci was submitted to Genbank (accession nos. [MN975269–MN975340](#), [Supplemental Information 1](#)).

## PCR detection of the *Alternaria* apple pathotype

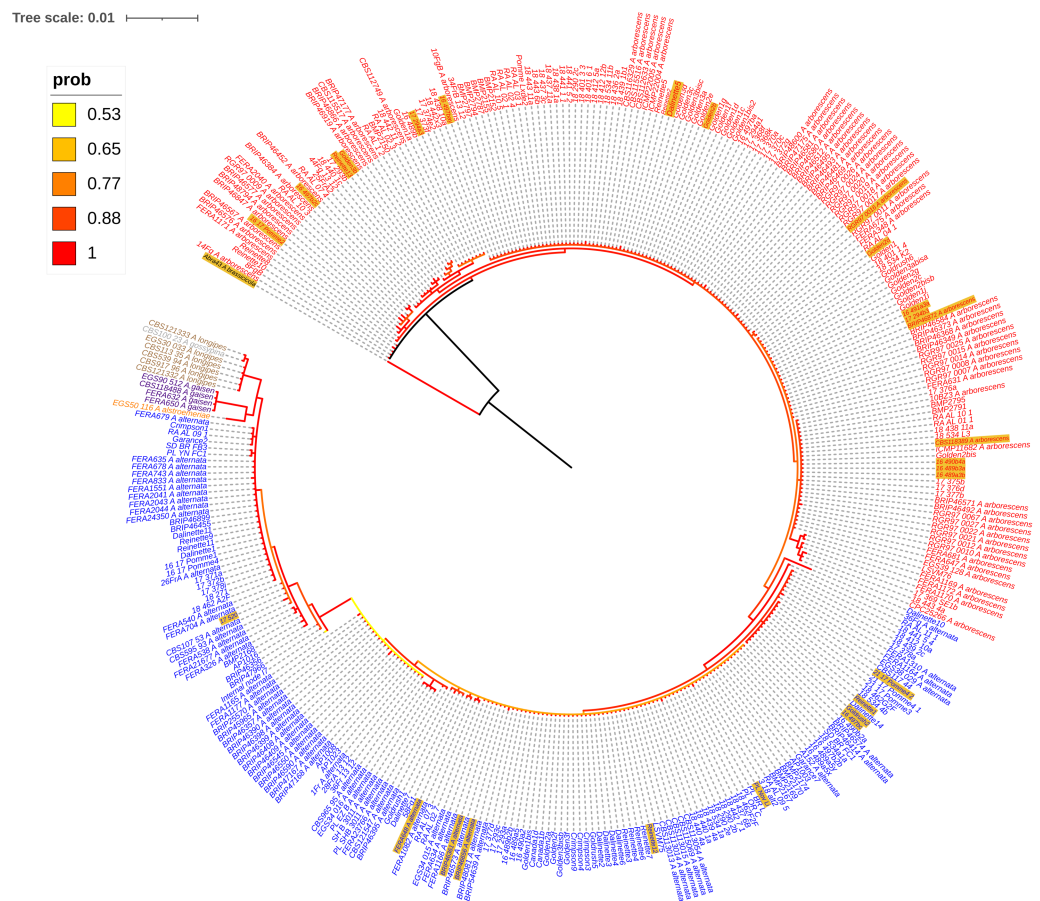
We searched for the *Alternaria* apple pathotype among all the French isolates by PCR targeting two genes involved in AMT apple toxin biosynthesis—namely *AMT1* and *AMT2*—using primers developed by [Johnson et al. \(2000\)](#) and [Harimoto et al. \(2007\)](#) respectively ([Table 2](#)). Additionally, 44 out of these French isolates were also tested by PCR targeting *AMT14*, a gene found in the apple pathotype toxin gene cluster and for which homologous genes also exist in pear and strawberry pathotypes

(Armitage *et al.*, 2020). Other non-French isolates were tested by PCR targeting either *AMT1/AMT2* or *AMT1/AMT2/AMT14* genes (27 and 47 isolates respectively, [Supplemental Information 1](#)). PCRs were performed in 25- $\mu$ L reaction mixtures containing 1X PCR reaction buffer (HGS Diamond Taq, Eurogentec), 2.5 mM MgCl<sub>2</sub>, 4  $\times$  0.25 mM dNTPs, 0.2  $\mu$ M of forward and reverse primers ([Table 2](#)), 1 U of HGS diamond Taq (Eurogentec), 2  $\mu$ L of DNA extract and molecular grade water to complete up to 25  $\mu$ L. PCR conditions comprised an initial 10 min denaturation step at 95 °C followed by 40 cycles of a denaturation step at 94 °C for 30 s, an annealing step at 65 °C for *AMT1*, 57 °C for *AMT2*, 66 °C for *AMT14* ([Table 2](#)) and an extension step at 72 °C for 60 s. These cycles were followed by a final extension at 72 °C for 7 min. All PCRs were performed in duplicate. Controls were included in all reactions. Positive controls included either gDNA (*Alternaria* apple pathotype isolate LSVM 75) for *AMT14* testing or a plasmid solution of *AMT1* and *AMT2* genes inserted in a vector using the pCR4-TOPO cloning kit (Invitrogen) following the manufacturer's instructions. Negative controls consisted of sterile distilled water (SDW).

### Pathogenicity assays and Koch's postulates

Twenty-eight isolates were used for pathogenicity assays: ten *A. alternata*, 17 *A. arborescens* SC and one *A. brassicicola* ([Supplemental Information 1](#)). Their selection took into account isolation from different apple cultivars (10) and origin (5 countries) ([Supplemental Information 1](#)). It also covered different clades or subclades of the MLST phylogenetic tree constructed with the EndoPG and Alta-1 regions ([Fig. 1](#)). No apple pathotype isolate could be tested, because no strain in our collection could produce a sufficient amount of conidia in culture, despite several attempts. The *A. brassicicola* isolate Abra43 was included as a non-pathogenic control. Assays were performed on detached apple leaves from Golden Delicious clone X972 and Gala clone X4712, the most industrially-relevant cultivars in France, representing 45% of the total apple production in the country ([AGRESTE, 2021](#)). For simplicity, both clones will be referred hereafter to as Golden Delicious and Gala. Spore suspensions were obtained from isolates grown at 22 °C for 21 days on malt extract agar medium under specific light condition cycles ([Carvalho \*et al.\*, 2008](#)): an incubation period of 7 days under a 12 h alternating dark then light cycling period followed by 2 days under an 8 h-UV/16 h dark conditions (UV light-induced by a black fluorescent near UV lamp (Philips/15W, T8-BLB) and a final cycle of 12 days in full darkness. For each isolate, the inoculum was obtained by flooding the culture with 2 mL of SDW before dislodging spores by scraping the plate with an L-shaped spreader. After a filtration step with sterile gauze, the spore suspensions were counted and adjusted to a concentration of  $1 \times 10^5$  conidia/mL with a haemocytometer. Leaves from the third or fourth node were detached from fresh branches of apple saplings grown in a glasshouse. Eight leaves cleaned with 70% ethanol were placed in plastic boxes containing two white absorbent paper towels humidified with SDW and conserved at ambient temperature overnight before leaf inoculations. An experimental replicate consisted of one strain inoculated on five different leaves (placed in five different plastic boxes) per cultivar. Unwounded abaxial leaf surfaces were inoculated at six points with 10  $\mu$ L of conidial suspension. Each plastic box contained a negative





**Figure 1** Bayesian phylogenetic tree of Alta-1 and EndoPg markers. The tree was constructed with sequences of 352 *Alternaria* isolates (261 sequences were generated in this study). The color legend refers to the Bayesian posterior probabilities of the tree nodes. *Alternaria alternata* isolates are shown in blue. The *Alternaria arborescens* SC isolates are shown in red. Isolates from other taxonomic groups of the *Alternaria* section *Alternaria* are represented in orange (*Alternaria alstroemeriae*), purple (*Alternaria gaisen*), brown (*Alternaria longipes*) and grey (*Alternaria gossypina*). Isolates used in pathogenicity tests are highlighted in a yellow background.

Full-size DOI: 10.7717/peerj.12496/fig-1

control that consisted of one leaf inoculated with SDW. Inoculated leaves were incubated at 20 °C for 10 days under an alternating 12 h dark then light cycling period. Each isolate was tested twice in independent experiments. The results from each experiment were analyzed separately at three data collection times: 4, 7 and 10 days post-inoculation (dpi). Two types of analysis were performed. For data from 4 dpi, a zero-inflated Poisson general linear mixed model (GLMM) was used to assess the number of lesions per leaf. The model included the following explanatory variables: the taxon of the tested isolate (*A. alternata* or *A. arborescens* SC), the apple cultivar (Gala or Golden Delicious), and an experiment repeat variable (each isolate was tested twice in independent experiments). An isolate effect was taken into account as a random variable. For data from 7 and 10 dpi, zero-inflated beta GLMMs were performed. On both 7 and 10 dpi the response variable was the proportion of the diseased leaf area on detached leaves that corresponds to the lesion size. The diseased

leaf area proportion (necrosis) was assessed by visual inspection and coded between 0 and 1. The model included the same explanatory and random effect variables used for the 4 dpi data model: taxon, cultivar, repeat and isolate (random effect). All GLMM analyses (on 4, 7 and 10 dpi) took into account only isolates of *A. alternata* and *A. arborescens* SC, as only one *A. brassicicola* isolate was used, which is not enough to be included in the isolate random effect. All the models were run in the R environment (version 4.0.3) using the glmmTMB package (Brooks et al., 2017). Excess zeros were in all cases tested with the function testZeroInflation of the DHARMA R package (Hartig, 2017), which compares the distribution of expected zeros in the data with the observed zeros. Model residual diagnostics of all models were performed with the DHARMA package. Analysis of variance type II (ANOVA type II) was performed to assess the effect of each explanatory variable. Koch's postulates were assessed by the re-isolation on malt agar extract medium of 23 randomly chosen tested isolates (Supplemental Information 1) and the re-sequencing of Alta-1 and EndoPG loci.

## RESULTS

### Molecular identification of strains

Concatenation of Alta-1 and Endo-PG sequences resulted in a 900-bp alignment. This alignment was used for phylogenetic analyses. Depending on the isolate, the number of bases/residues that differed between isolates of *A. alternata* and isolates of other taxa of the *Alternaria* section *Alternaria* included in the analysis (*A. arborescens* SC, *A. gaisen*, *A. longipes*, *A. gossypina* and *A. alstroemeriae*) ranged from 6 to 37. The two-marker phylogenetic tree distinguished two major clades: *A. alternata* and *A. arborescens* SC (Fig. 1). The *A. alternata* phylogenetic clade encompassed four subclades, while the *A. arborescens* SC encompassed two. The analysis could also distinguish these two clades from other taxa in the *Alternaria* section *Alternaria*: *A. gaisen*, *A. longipes*, *A. gossypina* and *A. alstroemeriae* (Fig. 1). The three concatenated genes (Alta-1/Endo-PG/OPA10-2) resulted in a 1,534-bp alignment which included 18–65 differences/residues between *A. alternata* and other taxa of the *Alternaria* section *Alternaria* included in the analysis. As for the two-marker concatenated tree, the phylogenetic analysis using three markers distinguished two major clades, *A. alternata* and *A. arborescens* SC (Supplemental Information 2). It could also distinguish these clades from other taxa in the *Alternaria* section *Alternaria* (*A. gaisen*, *A. longipes*, *A. gossypina* and *A. alstroemeriae*). The phylogenetic tree pattern was similar to that determined with two loci (i.e., Alta-1 and EndoPG). The *A. alternata* clade was divided into four subclades, whereas the *A. arborescens* SC was separated into two subclades. Adding a third locus to the analysis (OPA 10-2) did not improve the resolution within *A. alternata* and *A. arborescens* SC (Supplemental Information 2). The two phylogenetic analyses did, however, refine identification of two isolates: two Australian strains were consequently assigned to *A. alternata* whereas they had previously been assigned to *A. longipes* (BRIP46356 and BRIP46455) by Hartevelde, Akinsanmi & Drenth (2013) (Fig. 1, Supplemental Information 1).

## Identification of *Alternaria* isolates causing ALB in France

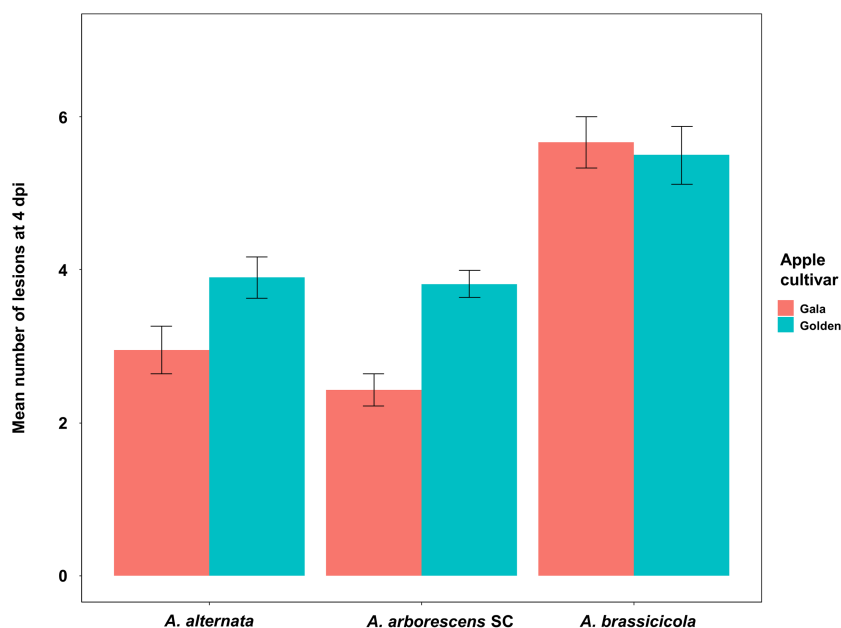
Isolates from France were identified as either *A. arborescens* SC (91 isolates, 55%) or *A. alternata* (75 isolates, 45%) based on the taxonomic identification with the Alta-1 and EndoPG markers. No changes in the taxonomic identification were observed for the subset of isolates with sequences of Alta-1, EndoPG and OPA 10-2 markers ([Supplemental Information 1](#)). The distribution of isolates differed according to the cultivar ([Table 1](#)). It was observed that *A. arborescens* SC isolates were more frequent on Gala and Golden Delicious cultivars, whereas *A. alternata* isolates were more frequent on cultivars Reinette grise du Canada, Dalinette and Crimson. On Braeburn and Pink lady cultivars, there was a similar number of isolates of *A. arborescens* SC and *A. alternata*. On Garance and GoldRush (Coop38cov) cultivars, too few isolates were recovered to make any comparison ([Table 1](#)).

## Screening for the *Alternaria* apple pathotype

None of the 166 French isolates were identified as the apple pathotype by PCR tests targeting the *AMT* apple toxin (*AMT1*, *AMT2*) or cross-pathotype (*AMT14*) loci ([Supplemental Information 1](#)). All five apple pathotype reference isolates behaved as expected and yielded positive results for *AMT1* and *AMT2* PCR tests and also for the tests targeting *AMT14*, which is common to apple, pear and strawberry pathotypes ([Supplemental Information 1](#)). However, four isolates formerly identified as apple pathotype in earlier studies in Italy ([Rotondo et al., 2012](#)) and Israel ([Gur, Reuveni & Cohen, 2017](#)) gave negative PCR results for the three loci in our conditions, thus overturning their identification ([Supplemental Information 1](#)).

## Pathogenicity assays and Koch's postulates

At 4 dpi, 27 isolates—including the negative control *A. brassicicola*—were able to induce at least one necrotic spot on detached leaves of apple cultivars Golden Delicious and Gala. The only exception was an *A. arborescens* SC isolate (16\_489b3a) that did not induce necrotic spots on detached Gala cultivar leaves. The zero-inflated Poisson GLMM used to assess the number of lesions per leaf on 4 dpi, indicated a significant effect of the experiment repetition (Type II Wald;  $\chi^2 = 17.75$ ;  $df = 2$ ;  $p = 0.00014$ ) but not of the taxa (Type II Wald;  $\chi^2 = 2.44$ ;  $df = 1$ ;  $p = 0.118$ ) or the apple cultivar (Type II Wald;  $\chi^2 = 0.06$ ;  $df = 1$ ;  $p = 0.810$ ) ([Fig. 2](#)). All 28 tested isolates were able to induce leaf blotch after 7 dpi on Golden Delicious and Gala. On 7 dpi, the zero-inflated beta GLMM used to assess the proportion of the diseased leaf area indicated a significant effect of the experiment repetition (Type II Wald;  $\chi^2 = 84.013$ ;  $df = 2$ ;  $p < 0.001$ ) and the apple cultivar (Type II Wald;  $\chi^2 = 17.296$ ;  $df = 1$ ;  $p = 3.199e^{-5}$ ), but not of the taxa (Type II Wald;  $\chi^2 = 0.001$ ;  $df = 1$ ;  $p = 0.97$ ) ([Fig. 3A](#)). On 10 dpi the zero-inflated beta GLMM indicated a significant effect of the experiment repetition (Type II Wald;  $\chi^2 = 91.82$ ;  $df = 2$ ;  $p < 2.2e^{-16}$ ) and the apple cultivar (Type II Wald;  $\chi^2 = 11.80$ ;  $df = 1$ ;  $p = 0.0006$ ), but not of the taxa (Type II Wald;  $\chi^2 = 0.06$ ;  $df = 1$ ;  $p = 0.801$ ) ([Fig. 3B](#)). On 7 and 10 dpi, leaves of the Golden Delicious cultivar were more susceptible than those of Gala, as measured by the proportion of the diseased leaf area ([Fig. 3](#)). Raw measurements at 4, 7 and 10 dpi are presented in the [Supplemental Information 4](#) section. Finally, the identity of 23 of these



**Figure 2** Mean number of leaf lesions per cultivar (Gala in red and Golden Delicious in blue) 4 days post-inoculation (4 dpi). Results are reported for isolates of *Alternaria alternata*, *Alternaria arborescens* SC and *Alternaria brassicicola*, which were identified by multi-locus sequence typing (MLST). Pathogenicity tests were performed on unwounded abaxial leaf surfaces with six separate point inoculations of 10  $\mu$ l of *Alternaria* conidial suspensions (concentration of  $1 \times 10^5$  conidia/ $\mu$ L). Statistical tests were only performed on *Alternaria alternata* and *Alternaria arborescens* SC. No differences were observed between isolates of *Alternaria alternata* and *Alternaria arborescens* SC or the apple cultivar (Golden Delicious and Gala). A significant effect of the experiment repetition (Type II Wald;  $\chi^2 = 17.75$ ;  $p < 0.001$ ) was observed.

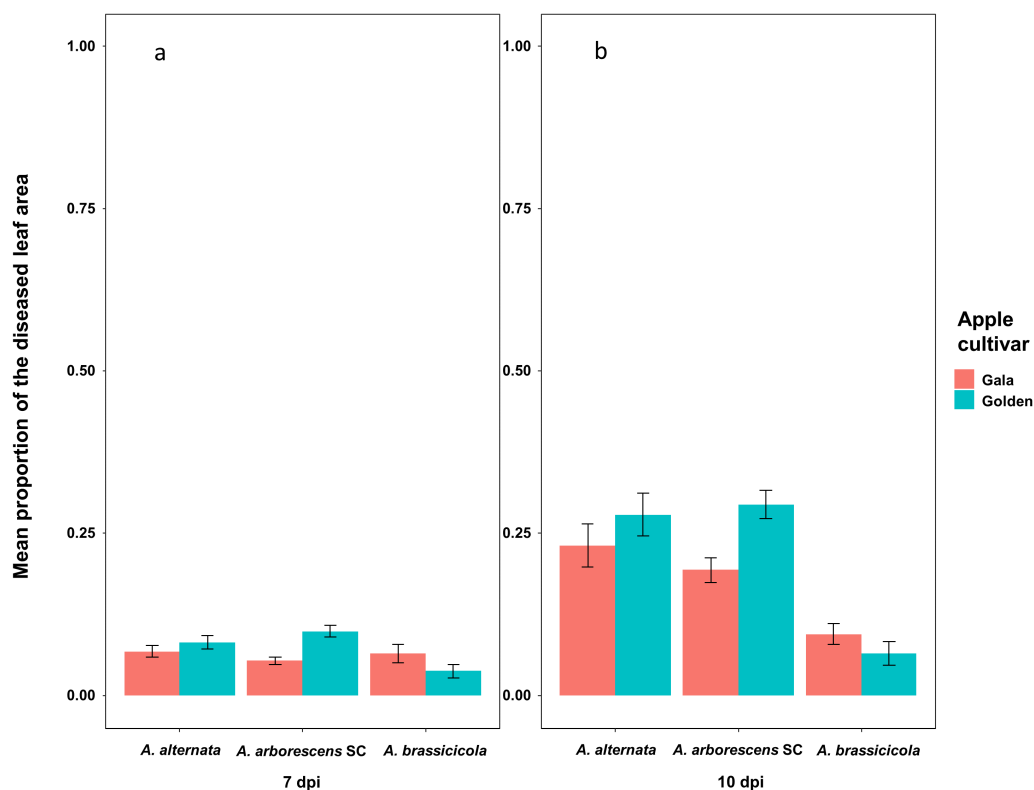
Full-size DOI: 10.7717/peerj.12496/fig-2

strains was confirmed by re-isolating and sequencing (Alta-1 and EndoPG loci), fulfilling Koch's postulates (Supplemental Information 1). No disease symptoms were observed on leaves inoculated with water. Examples of the results from the pathogenicity tests are shown in the Supplemental Information 5 section.

## DISCUSSION

### The *Alternaria* apple pathotype was not found in French orchards

We firstly checked whether we were witnessing the emergence of the apple pathotype in French orchards. We did this through PCR assays targeting three genes located in the conditionally dispensable chromosome (CDC)—*AMT1* (Johnson et al., 2000), *AMT2* (Harimoto et al., 2008) and *AMT14* (Armitage et al., 2020)—which characterizes isolates of the apple pathotype. Our results showed that this pathogen was not present in France within the sampled regions and years. To date, molecular detection of the apple pathotype has only been possible by PCR tests that target genes present in the CDC. These targets are associated with secondary metabolite clusters involved in the production of the apple pathotype host-specific toxin AMT (Armitage et al., 2020; Harimoto et al., 2007; Johnson et al., 2000). Although all our apple pathotype reference strains gave positive results using



**Figure 3** Mean proportion of the diseased leaf area per cultivar 7 and 10 days post-inoculation (7, 10 dpi) reported for *Alternaria alternata*, *Alternaria arborescens* SC and *Alternaria brassicicola*. (A) Mean proportion of the diseased leaf area per cultivar (Gala in red and Golden Delicious in blue) 7 days post-inoculation (7 dpi) reported for isolates of *Alternaria alternata*, *Alternaria arborescens* SC and *Alternaria brassicicola*, identified by multi-locus sequence typing (MLST). Statistical tests were only performed on *Alternaria alternata* and *Alternaria arborescens* SC. The results showed that on 7 dpi, leaves of the Golden Delicious cultivar were more susceptible than leaves of the Gala cultivar (Type II Wald;  $\chi^2 = 17.296$ ;  $p < 0.001$ ). No differences were observed between isolates of *Alternaria alternata* and *Alternaria arborescens* SC. A significant effect of the experiment repetition (Type II Wald;  $\chi^2 = 84.013$ ;  $p < 0.001$ ) was also observed. (B) Mean proportion of the diseased leaf area per cultivar (Gala in red and Golden Delicious in blue) 10 days after inoculation (10 dpi) reported for isolates of *Alternaria alternata*, *Alternaria arborescens* and *Alternaria brassicicola*, identified by multi-locus sequence typing (MLST). Statistical tests were only performed on *Alternaria alternata* and *Alternaria arborescens* SC. The results showed that on 10 dpi, leaves of the Golden Delicious cultivar were more susceptible than leaves of the Gala cultivar (Type II Wald;  $\chi^2 = 11.80$ ;  $p < 0.001$ ). No differences were observed between isolates of *Alternaria alternata* and *Alternaria arborescens* SC. A significant effect of the experiment repetition (Type II Wald;  $\chi^2 = 91.82$ ;  $p < 0.001$ ) was also observed.

Full-size DOI: 10.7717/peerj.12496/fig-3

the three markers, the Italian and Israeli strains previously identified as apple pathotype by PCR based on the amplification of a modified PCR test targeting *AMT1* (Rotondo *et al.*, 2012) and *AMT3* (Gur, Reuveni & Cohen, 2017) gave negative results in our study with tests targeting loci *AMT1*, *AMT2* and *AMT14*. In the case of the Israeli strains, the primers targeting *AMT3* (Harimoto *et al.*, 2007), showed unsatisfactory results in our preliminary tests as several unexpected bands appeared after gel electrophoresis of the PCR product (data not shown) and these primers were discarded for subsequent molecular tests. The

results obtained with the Italian strains are more difficult to explain because the initial study of [Rotondo et al. \(2012\)](#) performed several confirmation tests (including sequencing of the products). One hypothesis that may explain the difficulty in amplifying these loci is the occurrence of partial or total chromosomal loss in isolates. This phenomenon has previously been reported in the apple pathotype by [Johnson et al. \(2001\)](#) and is due to chromosomal instability in culture. To avoid this problem, in the analysis of French isolates, our tests targeting *AMT1*, *AMT2* and *AMT14* were performed right after isolation, avoiding several subculturing cycles. However, in all the cases where the presence of *AMT1*, *AMT2* and *AMT14* was assessed (in the five reference isolates; [Supplemental Information 1](#)), all three gene-specific PCR assays gave positive results. Based on the results of our study, we suggest that the apple pathotype should be detected from pure cultures by using at least two or more of the existing molecular tests to target *AMT1* and *AMT2*, which is a good option if the objective is to specifically detect the apple pathotype. By optimizing and validating current tools or developing new molecular tests, it might be possible to detect diseases *in planta* from symptomatic leaves, which could avoid isolate subculturing cycles while minimizing the risk of chromosomal loss.

### **Co-existence of *Alternaria alternata* and the *Alternaria arborescens* species complex in French orchards**

The second objective of this study was to identify *Alternaria* species or groups associated with *Alternaria* leaf blotch (ALB) and *Alternaria* fruit spot (AFS) in French orchards. The phylogenetic trees generated after using MLST clearly showed that these diseases are caused by two phylogenetic clades: *A. alternata* and *A. arborescens* SC, regardless of the apple cultivar. Our results also showed that both taxa may co-exist in the same orchard. These results confirm that these two *Alternaria* taxa are the major cause of ALB and AFS in regions of the world where these diseases have been studied so far ([Gur, Reuveni & Cohen, 2017](#); [Harteveld, Akinsanmi & Drenth, 2013](#); [Rotondo et al., 2012](#); [Toome-Heller et al., 2018](#); [Wenneker et al., 2018](#)). In addition, our results suggest that sequencing two loci, *i.e.*, *Alta-1* and *EndoPG*, is enough to be able to distinguish *Alternaria* isolates involved in these diseases. Firstly, these two loci enable the two major phylogenetic clades—*A. alternata* and *A. arborescens* SC—to be distinguished. Secondly, the loci also clearly distinguish these two clades from other *Alternaria* taxa within the *Alternaria* section. Including the OPA 10-2 locus did not substantially improve the molecular identification of the strains.

### ***Alternaria alternata* and the *Alternaria arborescens* SC are responsible for defoliation in French apple orchards**

We showed that the isolates collected from necrotic leaves were able to produce symptoms on detached apple leaves of cultivars Gala and Golden Delicious. The latter cultivar was more susceptible under our conditions, as shown by measurements of the diseased leaf area after 7 and 10 dpi, a quantitative trait generally used to measure pathogen aggressiveness. Gala and Golden Delicious were used for pathogenicity tests since they are the most important cultivars in France. Although these cultivars are considered as relatively “susceptible” to ALB and AFS ([Filajdić & Sutton, 1991](#); [Harteveld, Akinsanmi & Drenth, 2014](#); [Rotondo et al., 2012](#)), earlier studies have shown that there is little, or no cultivar specificity in

*Alternaria* taxa causing ALB and AFS, at least for the most economically important apple cultivars used worldwide (Filajdić & Sutton, 1991; Hartevelde, Akinsanmi & Drenth, 2014; Li et al., 2019). Management of the disease may involve resistant cultivars. However, further research involving more cultivars would be required to assess potential cultivar-specificity among *Alternaria* taxa causing ALB and AFS. The selection of disease-resistant cultivars should rely upon studies combining data collected from the field and from trials under controlled conditions (Li et al., 2019).

Our results also showed that the entire subset of *Alternaria* isolated from apple leaves or fruit fulfilled Koch's postulates. The pathogenicity tests showed that there are no significant differences between isolates of *A. alternata* and *A. arborescens* SC as assessed by the number of lesions per leaf on 4 dpi or the proportion of the diseased leaf area on 7 and 10 dpi. Both results are in agreement with previous studies that suggest that pathogenicity may be isolate-dependent rather than species-dependent (Hartevelde, Akinsanmi & Drenth, 2014; Rotondo et al., 2012). One of the limits of our study is that we could not assess the pathogenicity of any of the reference apple pathotype strains because too few spores could be obtained during cultivation. It is important to highlight, however, that previous studies comparing the pathogenicity of apple pathotype isolates with other *Alternaria* isolates in apples have shown discrepant results: while Armitage et al. (2020) showed that apple pathotype strains were significantly more pathogenic than other isolates that do not carry CDCs, Rotondo et al. (2012) did not observe any difference in levels of pathogenicity between apple pathotype isolates and other *Alternaria* isolated from apple leaves or fruit. Unexpectedly, we observed symptoms on apple leaves inoculated by *A. brassicicola*, which has never been reported as pathogenic on apples to our knowledge. These results suggest that *Alternaria* isolates from other *Alternaria* sections that do not carry CDCs involved in the production of HTS may also cause ALB symptoms under controlled conditions. This is probably associated with the production of nonspecific *Alternaria* toxins that can affect many plants regardless of whether they are or are not a host of the pathogen (Tsuge et al., 2013). However, as shown here and elsewhere, under natural conditions only small-spore *Alternaria* (*Alternaria* section *Alternaria*) have so far been described as apple pathogens causing ALB and AFS. Recent genomic resources, including the genome of *A. brassicicola* (Belmas et al., 2018) and isolates of *Alternaria* involved in AFS and ALB (Armitage et al., 2020) will allow comparative genomics analysis that may clarify these pathogenicity mechanisms.

Finally, this study identified the *Alternaria* taxa involved in ALB and AFS in France, but did not determine the cause of the increased severity in these diseases over recent years (e.g., introduction of the apple pathotype). However, alternative explanations may be suggested based on previous epidemiological studies. Firstly, it seems that the disease develops better in relatively hot (between > 20 °C and 30 °C) and rainy weather (Bhat, Peerzada & Anwar, 2015; Filajdić & Sutton, 1992; Hartevelde et al., 2013; Kim, Cho & Kim, 1986). Potential changes in these two parameters, or other climatic factors, should be studied in greater depth in the French regions concerned by AFS. Another hypothesis is the introduction of more virulent strains. This could occur by the long-distance movement of spores carried by wind currents that may have transported

*Alternaria* air inoculum into apple orchards from sources in other apple-producing regions (Fernández-Rodríguez et al., 2015; Woudenberg et al., 2015b). Finally, the emergence of fungicide resistance among strains should not be ruled out, considering that apple orchards are treated intensely with fungicides, mainly used to control apple scab caused by *Venturia inaequalis*, which also contributes to the control of ALB and AFS (Horlock, 2006).

## CONCLUSIONS

Since 2016, *Alternaria* leaf blotch and premature defoliation attributed to *Alternaria* spp. have been observed in apple-producing regions in central and south-eastern France. The emergence of the *Alternaria* apple pathotype was suspected following its observation in northern Italy. The presence of the apple pathotype in French orchards was therefore assessed by a specific PCR targeting three genes located on conditionally dispensable chromosomes across a large collection of *Alternaria* isolates. Our results showed that the *Alternaria* apple pathotype was not present. Taxonomic identification of these isolates, assessed by multi-locus sequence typing and construction of phylogenetic trees, indicates that *Alternaria* leaf blotch in France is associated with isolates of *A. alternaria* and *A. arborescens* SC. Pathogenicity tests of a subsample of isolates demonstrated that they were all able to induce necrotic symptoms on detached apple leaves of the cultivars Gala and Golden Delicious. Our results also showed that there are no significant differences in levels of pathogenicity between isolates of *A. alternaria* and *A. arborescens* SC. Our controlled pathogenicity tests do suggest, however, that cultivar Golden Delicious is more susceptible to *Alternaria* leaf blotch. In the future, genetic and epidemiological approaches are required to clarify why *Alternaria* leaf blotch events have increased in frequency and severity in some regions of France.

## ACKNOWLEDGEMENTS

We would also like to thank the French apple producers who supplied leaf and fruit samples, and are grateful to Pr. Thomas Guillemette, Pr. Barry Pryor, Pr. Andrea Patriarca, Dr. Olufemi A. Akinsanmi, Dr. Moshe Reuveni, Dr. Lior Gur, Dr. Marina Collina and Ms. Jacqueline Hubert for sharing *Alternaria* strains. We are also grateful to the LSV ANSES team members who helped to perform some of the experiments, in particular Maurane Pagniez for the purification of single-spore strains and Eugénie Vuittenez for the pathogenicity assays.

## ADDITIONAL INFORMATION AND DECLARATIONS

### Funding

This work was funded by the French Ministry of Agriculture and the French Agency for Biodiversity, ECOPHYTO/AFB, AAP CASDAR (call for projects 2017) recherche technologique 1716 CREATIVE The mycology research unit of the ANSES Plant Health Laboratory (LSV) is supported by a grant managed by the French National Research Agency (ANR) as part of the French government's "Investing for the Future" (PIA) programme



(ANR-11-LABX-0002-01, Laboratory of Excellence-ARBRE). The funders had no role in study design, data collection and analysis, decision to publish, or preparation of the manuscript.

### **Grant Disclosures**

The following grant information was disclosed by the authors:

French Ministry of Agriculture and the French Agency for Biodiversity.

ECOPHYTO/AFB.

AAP CASDAR.

French National Research Agency.

Laboratory of Excellence-ARBRE: ANR-11-LABX-0002-01.

### **Competing Interests**

The authors declare there are no competing interests.

Kévin Fontaine, Céline Fourier-Jeandel, Dossi C. Gnide, Renaud Ioos and Jaime Aguayo are employed by ANSES, Malzéville, France.

Anne-Laure Boutigny is employed by ANSES, Angers, France.

Manuela Crépet is employed by FREDON Rhône-Alpes, France.

Michel Giraud is employed by Centre opérationnel de Lanxade, CTIFL, France.

### **Author Contributions**

- Kévin Fontaine, Céline Fourier-Jeandel and Dossi Carine Gnide performed the experiments, analyzed the data, authored or reviewed drafts of the paper, and approved the final draft.
- Andrew D. Armitage, Anne-Laure Boutigny, Manuela Crépet, Valérie Caffier and Jason Shiller performed the experiments, authored or reviewed drafts of the paper, and approved the final draft.
- Bruno Le Cam, Michel Giraud and Renaud Ioos conceived and designed the experiments, authored or reviewed drafts of the paper, and approved the final draft.
- Jaime Aguayo conceived and designed the experiments, performed the experiments, analyzed the data, prepared figures and/or tables, authored or reviewed drafts of the paper, and approved the final draft.

### **DNA Deposition**

The following information was supplied regarding the deposition of DNA sequences:

A subset of single-locus sequence data for the corresponding loci are available at Genbank: [MN975269](#) to [MN975340](#).

### **Data Availability**

The following information was supplied regarding data availability:

The raw measurements are available in the [Supplementary Files](#).

### **Supplemental Information**

Supplemental information for this article can be found online at <http://dx.doi.org/10.7717/peerj.12496#supplemental-information>.

## REFERENCES

- AGRESTE. 2021. En 2021, une production française de pommes prévue inférieure à la moyenne 2016-2020. Available at [https://agreste.agriculture.gouv.fr/agreste-web/download/publication/publie/IraFru21105/2021\\_105inforappomme.pdf](https://agreste.agriculture.gouv.fr/agreste-web/download/publication/publie/IraFru21105/2021_105inforappomme.pdf) (accessed Pomme - No 2/5, 2021-105).
- Andrew M, Peever TL, Pryor BM. 2009. An expanded multilocus phylogeny does not resolve morphological species within the small-spored *Alternaria* species complex. *Mycologia* 101:95–109 DOI 10.3852/08-135.
- Armitage AD, Barbara DJ, Harrison RJ, Lane CR, Sreenivasaprasad S, Woodhall JW, Clarkson JP. 2015. Discrete lineages within *Alternaria alternata* species group: Identification using new highly variable loci and support from morphological characters. *Fungal Biology* 119:994–1006 DOI 10.1016/j.funbio.2015.06.012.
- Armitage AD, Cockerton HM, Sreenivasaprasad S, Woodhall J, Lane CR, Harrison RJ, Clarkson JP. 2020. Genomics evolutionary history and diagnostics of the *Alternaria alternata* species group including apple and asian pear pathotypes. *Frontiers in Microbiology* 10 DOI 10.3389/fmicb.2019.03124.
- Belmas E, Briand M, Kwasiborski A, Colou J, N’Guyen G, Iacomini B, Grappin P, Campion C, Simoneau P, Barret M, Guillemette T. 2018. Genome sequence of the necrotrophic plant pathogen *Alternaria brassicicola* Abra43. *Genome Announcements* 6:e01559-01517.
- Bhat K, Peerzada S, Anwar A. 2015. *Alternaria* epidemic of apple in Kashmir. *African Journal of Microbiology Research* 9:831–837 DOI 10.5897/AJMR2014.6611.
- Brooks ME, Kristensen K, van Benthem KJ, Magnusson A, Berg CW, Nielsen A, Skaug HJ, Machler M, Bolker BM. 2017. glmmTMB balances speed and flexibility among packages for zero-inflated generalized linear mixed modeling. *The R Journal* 9:378–400 DOI 10.32614/RJ-2017-066.
- Carvalho DD, Alves E, Batista TR, Camargos RB, Lopes EA. 2008. Comparison of methodologies for conidia production by *Alternaria alternata* from citrus. *Brazilian Journal of Microbiology* 39:792–798 DOI 10.1590/S1517-83822008000400036.
- Dickens JSW, Cook RTA. 1995. Japanese pear black spot and apple *Alternaria* blotch. *EPPO Bulletin* 25:651–659 DOI 10.1111/j.1365-2338.1995.tb01117.x.
- Edgar RC. 2004. MUSCLE: multiple sequence alignment with high accuracy and high throughput. *Nucleic Acids Research* 32:1792–1797 DOI 10.1093/nar/gkh340.
- Fernández-Rodríguez S, Sadyś M, Smith M, Tormo-Molina R, Skjøth CA, Maya-Manzano JM, Silva-Palacios I, Gonzalo-Garijo Á. 2015. Potential sources of airborne *Alternaria* spp. spores in south-west Spain. *Science of The Total Environment* 533:165–176 DOI 10.1016/j.scitotenv.2015.06.031.
- Filajdić N, Sutton T. 1991. Identification and distribution of *Alternaria mali* on apples in North Carolina and susceptibility of different varieties of apples to *Alternaria* blotch. *Plant Disease* 75:1045–1048 DOI 10.1094/PD-75-1045.

- Filajdić N, Sutton T. 1992.** Influence of temperature and wetness duration on infection of apple leaves and virulence of different isolates of *Alternaria mali*. *Phytopathology* **82**:1279–1283 DOI [10.1094/Phyto-82-1279](https://doi.org/10.1094/Phyto-82-1279).
- Gouy M, Guindon S, Gascuel O. 2010.** SeaView version 4: a multiplatform graphical user interface for sequence alignment and phylogenetic tree building. *Molecular Biology and Evolution* **27**:221–224 DOI [10.1093/molbev/msp259](https://doi.org/10.1093/molbev/msp259).
- Gur L, Reuveni M, Cohen Y. 2017.** Occurrence and etiology of *Alternaria* leaf blotch and fruit spot of apple caused by *Alternaria alternata* f. sp. *mali* on cv. Pink lady in Israel. *European Journal of Plant Pathology* **147**:695–708 DOI [10.1007/s10658-016-1037-0](https://doi.org/10.1007/s10658-016-1037-0).
- Harimoto Y, Hatta R, Kodama M, Yamamoto M, Otani H, Tsuge T. 2007.** Expression profiles of genes encoded by the supernumerary chromosome controlling AM-Toxin biosynthesis and pathogenicity in the apple pathotype of *Alternaria alternata*. *Molecular Plant-Microbe Interactions* **20**:1463–1476 DOI [10.1094/MPMI-20-12-1463](https://doi.org/10.1094/MPMI-20-12-1463).
- Harimoto Y, Tanaka T, Kodama M, Yamamoto M, Otani H, Tsuge T. 2008.** Multiple copies of AMT2 are prerequisite for the apple pathotype of *Alternaria alternata* to produce enough AM-toxin for expressing pathogenicity. *Journal of General Plant Pathology* **74**:222–229 DOI [10.1007/s10327-008-0089-1](https://doi.org/10.1007/s10327-008-0089-1).
- Harteveld D, Akinsanmi OA, Chandra K, Drenth A. 2013.** Timing of infection and development of *Alternaria* diseases in the canopy of apple trees. *Plant Disease* **98**:401–408 DOI [10.1094/PDIS-06-13-0676-RE](https://doi.org/10.1094/PDIS-06-13-0676-RE).
- Harteveld D, Akinsanmi OA, Drenth A. 2013.** Multiple *Alternaria* species groups are associated with leaf blotch and fruit spot diseases of apple in Australia. *Plant Pathology* **62**:289–297 DOI [10.1111/j.1365-3059.2012.02637.x](https://doi.org/10.1111/j.1365-3059.2012.02637.x).
- Harteveld D, Akinsanmi OA, Drenth A. 2014.** Pathogenic variation of *Alternaria* species associated with leaf blotch and fruit spot of apple in Australia. *European Journal of Plant Pathology* **139**:789–799 DOI [10.1007/s10658-014-0433-6](https://doi.org/10.1007/s10658-014-0433-6).
- Hartig F. 2017.** DHARMA: residual diagnostics for hierarchical (multi-level/mixed) regression models. R package version 01 5. Available at <https://cran.r-project.org/web/packages/DHARMA/vignettes/DHARMA.html>.
- Hatta R, Ito K, Hosaki Y, Tanaka T, Tanaka A, Yamamoto M, Akimitsu K, Tsuge T. 2002.** A conditionally dispensable chromosome controls host-specific pathogenicity in the fungal plant pathogen *Alternaria alternata*. *Genetics* **161**:59–70 DOI [10.1093/genetics/161.1.59](https://doi.org/10.1093/genetics/161.1.59).
- Hong SG, Cramer RA, Lawrence CB, Pryor BM. 2005.** Alta 1 allergen homologs from *Alternaria* and related taxa: analysis of phylogenetic content and secondary structure. *Fungal Genetics and Biology* **42**:119–129 DOI [10.1016/j.fgb.2004.10.009](https://doi.org/10.1016/j.fgb.2004.10.009).
- Horlock CM. 2006.** Management of *Alternaria* leaf and fruit spot in apples. Final Report Project AP02011. Sydney: Horticulture Australia Limited. Available at <https://www.horticulture.com.au/globalassets/hort-innovation/historic-reports/management-of-alternaria-leaf-and-fruit-spot-in-apples-ap02011.pdf>.
- Huson DH, Scornavacca C. 2012.** Dendroscope 3: an interactive tool for rooted phylogenetic trees and networks. *Systematic Biology* **61**:1061–1067 DOI [10.1093/sysbio/sys062](https://doi.org/10.1093/sysbio/sys062).

- Johnson L, Johnson RD, Akamatsu H, Salamiah A, Otani H, Kohmoto K, Kodama M. 2001.** Spontaneous loss of a conditionally dispensable chromosome from the *Alternaria alternata* apple pathotype leads to loss of toxin production and pathogenicity. *Current Genetics* **40**:65–72 DOI [10.1007/s002940100233](https://doi.org/10.1007/s002940100233).
- Johnson R, Johnson L, Kohmoto K, Otani H, Lane CR, Kodama M. 2000.** A polymerase chain reaction-based method to specifically detect *Alternaria alternata* Apple Pathotype (*A. mali*), the Causal Agent of *Alternaria* Blotch of Apple. *Phytopathology* **90**:973–976 DOI [10.1094/PHYTO.2000.90.9.973](https://doi.org/10.1094/PHYTO.2000.90.9.973).
- Kim C-H, Cho W-D, Kim S-C. 1986.** An empirical model for forecasting *Alternaria* leaf spot in apple. *Korean Journal of Applied Entomology* **25**:221–228.
- Lawrence DP, Gannibal PB, Peever TL, Pryor BM. 2013.** The sections of *Alternaria*: formalizing species-group concepts. *Mycologia* **105**:530–546 DOI [10.3852/12-249](https://doi.org/10.3852/12-249).
- Letunic I, Bork P. 2016.** Interactive tree of life (iTOL) v3: an online tool for the display and annotation of phylogenetic and other trees. *Nucleic Acids Research* **44**:W242–W245 DOI [10.1093/nar/gkw290](https://doi.org/10.1093/nar/gkw290).
- Li Y, Hu X-L, Trigiano R, Aldwinckle H, Cheng Z-M. 2019.** Evaluation of 110 apple cultivars for resistance to *Alternaria* blotch caused by *Alternaria alternata* apple pathotype. *HortScience* **54**:1268–1274 DOI [10.21273/HORTSCI13841-18](https://doi.org/10.21273/HORTSCI13841-18).
- Meena M, Gupta SK, Swapnil P, Zehra A, Dubey MK, Upadhyay RS. 2017.** *Alternaria* toxins: potential virulence factors and genes related to pathogenesis. *Frontiers in Microbiology* **8**:1451 DOI [10.3389/fmicb.2017.01451](https://doi.org/10.3389/fmicb.2017.01451).
- Ozgonen H, Karaca G. 2006.** First report of *Alternaria mali* causing necrotic leaf spot of apples in Turkey. *Plant Pathology* **55**:578–578.
- Roberts R, Bischoff J, Reymond S. 2012.** Differential gene expression in *Alternaria* gaisen exposed to dark and light. *Mycological Progress* **11**:373–382 DOI [10.1007/s11557-011-0752-3](https://doi.org/10.1007/s11557-011-0752-3).
- Ronquist F, Huelsenbeck J, Teslenko M. 2012a.** MrBayes version 3.2 manual: tutorials and model summaries. Available at <http://nbisweden.github.io/MrBayes/manual.html>.
- Ronquist F, Teslenko M, Van Der Mark P, Ayres DL, Darling A, Höhna S, Larget B, Liu L, Suchard MA, Huelsenbeck JP. 2012b.** MrBayes 3.2: efficient Bayesian phylogenetic inference and model choice across a large model space. *Systematic Biology* **61**:539–542 DOI [10.1093/sysbio/sys029](https://doi.org/10.1093/sysbio/sys029).
- Rotondo F, Collina M, Brunelli A, Pryor BM. 2012.** Comparison of *Alternaria* spp. collected in Italy from apple with *A. mali* and other AM-toxin producing strains. *Phytopathology* **102**:1130–1142 DOI [10.1094/PHYTO-04-12-0076-R](https://doi.org/10.1094/PHYTO-04-12-0076-R).
- Simmons EG. 2007.** *Alternaria: an identification manual*. Utrecht: CBS Fungal Biodiversity Centre.
- Talavera G, Castresana J. 2007.** Improvement of phylogenies after removing divergent and ambiguously aligned blocks from protein sequence alignments. *Systematic Biology* **56**:564–577 DOI [10.1080/10635150701472164](https://doi.org/10.1080/10635150701472164).
- Thomma BPHJ. 2003.** *Alternaria* spp.: from general saprophyte to specific parasite. *Molecular Plant Pathology* **4**:225–236 DOI [10.1046/j.1364-3703.2003.00173.x](https://doi.org/10.1046/j.1364-3703.2003.00173.x).

- Toome-Heller M, Baskarathevan J, Burnip G, Alexander B. 2018.** First report of apple leaf blotch caused by *Alternaria arborescens* complex in New Zealand. *New Zealand Journal of Crop and Horticultural Science* **46**:354–359.
- Tsuge T, Harimoto Y, Akimitsu K, Ohtani K, Kodama M, Akagi Y, Egusa M, Yamamoto M, Otani H. 2013.** Host-selective toxins produced by the plant pathogenic fungus *Alternaria alternata*. *FEMS Microbiology Reviews* **37**:44–66 DOI [10.1111/j.1574-6976.2012.00350.x](https://doi.org/10.1111/j.1574-6976.2012.00350.x).
- Wang M, Fu H, Shen X-X, Ruan R, Rokas A, Li H. 2019.** Genomic features and evolution of the conditionally dispensable chromosome in the tangerine pathotype of *Alternaria alternata*. *Molecular Plant Pathology* **20**:1425–1438 DOI [10.1111/mpp.12848](https://doi.org/10.1111/mpp.12848).
- Wenneker M, Pham K, Woudenberg J, Thomma BP. 2018.** First report of *Alternaria arborescens* species complex causing leaf blotch and associated premature leaf drop of ‘Golden delicious’ apple trees in the Netherlands. *Plant Disease* **102**:1654.
- Woudenberg JHC, Groenewald JZ, Binder M, Crous PW. 2013.** *Alternaria* redefined. *Studies in Mycology* **75**:171–212 DOI [10.3114/sim0015](https://doi.org/10.3114/sim0015).
- Woudenberg J, Seidl M, Groenewald J, de Vries M, Stielow J, Thomma B, Crous P. 2015a.** *Alternaria* section *Alternaria*: species, formae speciales or pathotypes? *Studies in Mycology* **82**:1–21 DOI [10.1016/j.simyco.2015.07.001](https://doi.org/10.1016/j.simyco.2015.07.001).
- Woudenberg J, Van Der Merwe N, Jurjević Ž, Groenewald J, Crous P. 2015b.** Diversity and movement of indoor *Alternaria alternata* across the mainland USA. *Fungal Genetics and Biology* **81**:62–72 DOI [10.1016/j.fgb.2015.05.003](https://doi.org/10.1016/j.fgb.2015.05.003).