



Published in final edited form as:

Autism. 2022 January ; 26(1): 135–145. doi:10.1177/13623613211024096.

Influence of Siblings on Adaptive Behavior Trajectories in Autism Spectrum Disorder

Nicole E. Rosen¹, James B. McCauley², Catherine Lord¹

¹University of California, Los Angeles

²Saint Mary's College of California

Abstract

Siblings play an important role in shaping the developmental trajectories of individuals with autism spectrum disorder (ASD). Having siblings has been associated with better social-communication, non-verbal communication, and theory of mind abilities in ASD. However, little is known about the impact of siblings on adaptive skill growth over time, even though adaptive behavior competencies are among the strongest predictors of positive outcomes in ASD. The current study examined the influence of sibling constellation factors, including the presence of siblings, position in birth order, gender of closest-age sibling, and gender match of sibling dyad on the adaptive behavior trajectories of individuals with ASD and non-spectrum disorders from ages 9 to 26 years. Participants with one or more siblings experienced faster growth rates in adaptive behavior from childhood to adulthood than participants without siblings across both Black and White participants, though effects were magnified in Black participants. Furthermore, among participants with siblings, those with male closest-age siblings and those with gender-matched siblings, irrespective of birth order, demonstrated the steepest adaptive skill growth within their respective groups over the 17-year period. Results suggest that siblings may serve an important role in improving the adaptive functioning trajectories and overall outcomes of individuals with ASD.

The sibling relationship is considered one of the most transformative and meaningful relationships that an individual may have (Cicirelli, 1995). Its unique lifetime duration (Cicirelli, 1982) makes it especially important for dyads involving an individual with ASD, for whom deficits in adaptive functioning, or adaptive behavior, persist across the lifespan, often necessitating ongoing support from families. Adaptive functioning, or the ability to successfully meet age-appropriate demands in everyday life (Sparrow et al., 1984, 2005), is an area that is particularly impaired in ASD, in comparison to other disabilities (Lord et al., 2020; Rodrigue et al., 1991), and that has robust impacts on adult outcomes (Farley et al., 2009; Tillmann et al., 2019). An encouraging note is that adaptive skills may be malleable through the inclusion of proper supports (Freeman et al., 1999; Howlin et al., 2000; McGovern & Sigman, 2005). Thus, given the common accessibility of siblings during

childhood and adolescence, siblings may represent a key medium through which individuals with ASD could gain competence leading to healthy, happy lives (Autistica, 2020).

Siblings have the potential to have a significant impact on the development of individuals with ASD (Knott et al., 2007) through various roles within the family, including play companion, nurturer, conversation partner, teacher, support system, caregiver, and lifelong friend, among many others (Oliva & Arranz, 2005; Orsmond & Seltzer, 2007). Time diary studies of typically developing and ASD sibling dyads have shown that siblings spend a meaningful amount of time together during non-school hours each day (Knott et al., 1995; McGovern & Sigman, 2005; McHale et al., 2012; Orsmond & Kuo, 2011). Siblings, particularly when included in interventions as partners, have been shown to effectively facilitate improvements for their siblings with ASD in social engagement and joint attention (Tsao & Odom, 2006; Walton & Ingersoll, 2012), interest and cooperation in play (Celiberti & Harris, 1993), verbal play behavior (Coe et al., 1991), social responsiveness (Ferraioli & Harris, 2011), and social imitation (Shivers & Plavnick, 2015; Walton & Ingersoll, 2012). These competencies have been shown to generalize to more naturalistic settings (Celiberti & Harris, 1993; Schreibman et al., 1983) to promote continued improvements in overall social communication (Ferraioli et al., 2012) and peer relationships (Bass & Mulick, 2007).

A review of the limited literature, consisting primarily of cross-sectional and/or small sample studies, reveals that the presence of siblings may be positively associated with stronger skill profiles across each of the three domains that comprise the Vineland Adaptive Behavior Scales (VABS; Sparrow et al., 1984, 2005) adaptive behavior composite in individuals with ASD: socialization (Ben-Itzhak et al., 2016, 2019; El-Ghoroury & Romanczyk, 1999; Knott et al., 1995; Matthews et al., 2013; Matthews & Goldberg, 2018; McGovern & Sigman, 2005), communication (Ben-Itzhak et al., 2016; El-Ghoroury & Romanczyk, 1999; Knott et al., 2007), and daily living skills (Ben-Itzhak et al., 2019). Furthermore, significant positive correlations have been reported between affected siblings' and nonaffected siblings' adaptive behavior domain scores and composite score (Brewton et al., 2012). While there are various possible interpretations of these findings, as the authors note, one implication may be that siblings positively impact the adaptive behavior profiles of individuals with ASD (Brewton et al., 2012). Thus, siblings may provide a built-in social companion, communication partner, and daily living skills role model through which individuals with ASD may develop the necessary competencies to live healthy and happy lives.

In assessing the role of siblings on the adaptive behavior development of individuals with ASD, it is important to consider various sibling constellation factors, including birth order, gender of the sibling, and gender match of the sibling dyad, that may be influencing the relationship. Within non-ASD samples, these sibling constellation factors have been used extensively in psychological research to assess their impact on numerous outcomes, including achievement and personality (Black et al., 2005; Steelman et al., 2002; Toman, 1993). The present study is an initial attempt to translate this sibling constellation research into populations involving individuals with ASD, with a specific focus on adaptive functioning outcomes given the importance of adaptive skills on life outcomes in ASD (Farley et al., 2009; Tillmann et al., 2019).

In ASD, related to birth order, the few available studies largely provide support for the positive influence of both younger and older siblings on the adaptive functioning of individuals with ASD, with mixed and non-significant differences reported between the impact of younger versus older siblings (Ben-Itzhak et al., 2019; Brewton et al., 2012). The influence of sibling gender on adaptive skills, specifically in the social domain, of individuals with ASD has also been preliminarily assessed, with no significant effects noted (Ben-Itzhak et al., 2019). Lastly, the gender match of the sibling dyad has not, to our knowledge, been analyzed in relation to adaptive skills. Given the limited existing literature, insight into potential gender and gender match effects may be extrapolated from findings in the related sibling relationship literature. Research largely suggests that female siblings, compared to male siblings, may have the strongest and most positive relationships with their siblings with developmental disabilities (male or female) (Orsmond & Seltzer, 2000). Unlike female siblings, however, the level of involvement of male siblings appears to be gender-dependent, with closer relationships noted between male siblings and gender-matched males with developmental disabilities (Orsmond & Seltzer, 2000; Seltzer et al., 1991).

Drawing upon an ongoing longitudinal study assessing 253 individuals across 24 years, the present study will be the first to examine longitudinally from childhood through adulthood the influence of siblings, and various sibling constellation factors, on adaptive behavior trajectories from ages 9 to 26 in individuals with ASD diagnoses (139 males, 22 females) and a comparison group of individuals with neurodevelopmental disorders other than ASD (26 males, 21 females) seen at the same time points. The aim is to evaluate the effects of sibling constellation factors (presence of sibling, birth order, gender of closest-age sibling, and gender match of sibling dyad) on growth in adaptive behaviors from childhood through adulthood. Based on the limited existing sibling literature reviewed above, we hypothesized that 1) individuals with ASD with one or more siblings, controlling for demographic and individual differences such as verbal IQ (VIQ) and autism severity, would show stronger adaptive skills and greater growth in these skills as measured by VABS age equivalents across time than those without siblings. Furthermore, among individuals with ASD with siblings, we hypothesized that, in accordance with existing research, 2) those with female closest-age siblings and those with gender-matched siblings, regardless of birth order position, would demonstrate the steepest growth in adaptive behavior age equivalents from late childhood through adulthood (Ben-Itzhak et al., 2019; Orsmond & Seltzer, 2000).

Methods

Participants

Participants were originally recruited from three sources: a) 192 children under age 3 years referred for possible ASD to two tertiary autism programs (North Carolina and Illinois); b) 21 children under age 3 years with non-ASD developmental delays identified through the referral sources of the first group (North Carolina and Illinois); and c) 40 children with ASD or neurodevelopmental delays also diagnosed at early ages who joined the study at approximately age 9 and then were followed at the same ages as the first two groups (Michigan) (see Anderson et al., 2014). Thus, the initial cohort participated in face-to-face assessments around ages 2, 3 (ASD referrals only), 5 (North Carolina only), with the full

sample seen at ages 9 (M years = 9.98, SD = 0.89), 19 (M = 19.04, SD = 1.2), and 26 (M = 25.97, SD = 1.4), as well as a phone interview at around age 14 (M = 14.22, SD = 0.41) and biannual packets of questionnaires throughout all this time.

Of the original 253 participants, 208 were selected for the current study based on their completion of at least one face-to-face assessment at approximately age 9 or older. A substantial majority completed more than one face-to-face assessment (83.2% completed two or more and 67.3% completed three or more), with a mean number of over three VABS available per participant. Attrition patterns in our sample were similar to those of previous studies, such that attrition was higher among Black families (p = .001), but not associated with gender, recruitment site, diagnosis, caregiver education, VIQ, or Autism Diagnostic Observation Schedule (ADOS; Lord et al., 2000) calibrated severity score (see Anderson et al., 2014; Lord et al., 2006; McCauley et al., 2020). Among the 208 participants in the current sample, Black participants accounted for 23.1% with the remainder White (see Table 1). The sample was predominantly male (79.3%) with 50% from North Carolina, 32.2% from Illinois, and 17.8% from Michigan. Approximately half of the sample reported a caregiver education level of at least a four-year college degree (49.5%). 22.6% of the sample had never received a formal diagnosis of ASD throughout the course of the longitudinal study despite repeated blinded assessments. These participants are included in the current study because they show similar patterns in presentation and outcome across development to the participants with ASD (see Lord et al., 2020; McCauley et al., 2020).

Among the 208 participants in the current study, 160 (76.9%) reported having at least one sibling (including full biological, half, step, and adopted siblings) with whom they lived during childhood. There were approximately even splits between the gender (male or female) of the closest-age sibling (50% male) and the gender match (gender-matched or non-gender-matched) of the participant and closest-age sibling (48.1% gender-matched). Over 98% of the 160 participants with at least one sibling reported age differences of fewer than 9 years from their closest-age sibling. However, the majority had narrower age gaps (86.9% were within five years, 48.8% were within three years, and 37.5% were within two years). Thus, given approximately all (98%) participants in the sample with one or more siblings were living with their closest-age sibling by age 9, coupled with the significance of age 9 as the first assessment timepoint that included the full sample (Michigan participants joined the study at age 9), the decision was made to start data analysis at the 9-year-old visit. Related to birth order, 51.9% of participants were youngest children, 22.5% were middle children, and 25.6% were oldest children. The number of siblings reported per participant included the following breakdown: 48 (23.1%) had no siblings, 87 (41.8%) had one sibling, 39 (18.8%) had two siblings, 26 (12.5%) had three siblings, 3 (1.4%) had four siblings, and 5 (2.4%) had five siblings. The 160 participants with at least one sibling did not differ from the larger sample of 208 in race (19.4% Black), gender (79.4% male), recruitment site (44.4% referred from North Carolina, 35.6% from Illinois, and 20% from Michigan), caregiver education (57.5% had at least a four-year college degree), or ASD diagnosis (20.6% never received a formal ASD diagnosis). The 48 participants without siblings also did not differ from the larger sample of 208 in race, gender, recruitment site, and ASD diagnosis. However, samples differed in caregiver education level, with fewer caregivers of

participants with no siblings (22.9%) having at least a four-year college degree ($p = .005$). Complete demographic and individual descriptive data are provided in Appendix 1.

Procedures

Various diagnostic and psychometric instruments were administered to participants and their parents during in-person assessments and phone interviews. Clinicians conducting the assessments, generally a post-doctoral fellow or licensed clinician and a post-baccalaureate research assistant, were research reliable in the relevant measures and were blind to the participants' previous assessment results. Overall, diagnoses of ASD or other disorders were made by this team and presented to a panel of experienced clinicians who reviewed all information and, with this team, reached consensus diagnoses of ASD and other conditions. In-person assessments typically included participant diagnostic assessments, parent interviews, and participant cognitive testing. All visits and assessments were provided free of charge; feedback was provided to individuals and families. Informed consent was obtained from all participating families and individuals themselves whenever possible. This research was approved by IRBs at various institutions across the duration of the study.

Measures

Autism severity.—At each in-person assessment at approximately ages 9, 19, and 26 years, participants were administered the ADOS. The ADOS yields a calibrated severity score (CSS; Gotham et al., 2009), which can be used to compare ASD symptom severity across individuals of different developmental levels. ADOS CSS scores range from 1–10, with scores of 5 and above indicating moderate to high levels of autism spectrum-related symptoms. Participant CSS at age 9 (if unavailable ($n = 27$; 13%), from later years) was included in the model as a covariate representing autism symptom severity.

Cognitive abilities.—Cognitive assessments were administered at each face-to-face assessment. The instrument used to obtain VIQ scores at age 9 was chosen from a standard hierarchy including the Wechsler Abbreviated Scale of Intelligence (WASI; Wechsler, 1999), Wechsler Intelligence Scale for Children (WISC-III; Wechsler, 1991), and Differential Abilities Scale (DAS; Elliott, 1990, 2007). Ratio VIQs were calculated from age equivalents when raw scores fell outside deviation score ranges. A VIQ score of 100 is considered average, with a standard deviation of 15. Participant VIQ at age 9 (if unavailable ($n = 30$; 14.4%), from later years) was included in the model as a covariate.

Demographic and sibling information.—Parents completed several questionnaires over the years about participant demographics and about the sibling constellation including the number of siblings and the age, gender, and ASD diagnostic history of the participant's closest-age sibling, revealing a 13.1% prevalence rate of sibling ASD co-occurrence.

Adaptive behavior.—The VABS, a standardized, semi-structured caregiver interview of adaptive functioning, was administered at all face-to-face assessments and at the 14-year-old phone interview. Age equivalent scores, which represent an approximation of the chronological age of typical development based on an individual's abilities, were produced for each domain by averaging the age equivalent scores of the subdomains (Bal et al.,

2015; Yang et al., 2016). For this study, domain age equivalent scores were averaged to produce a VABS adaptive behavior composite – age equivalent score (VABS-AE). Previous research has suggested that age equivalents, as opposed to composite scores, are more appropriate for samples consisting of participants with intellectual impairment (in our case, 60.6%) because standard composite scores are subject to basal effects, which can obscure differences between adaptive domains (Carter et al., 1998).

Statistical Analyses

Sibling constellation factors were coded into four variables for analyses: a) dichotomous variable representing the presence of siblings (yes or no); b) trichotomous variable representing the participant's position in the sibling birth order, comparing participants with only older siblings (youngest children), participants with younger and older siblings (middle children), and participants with only younger siblings (oldest children); c) dichotomous variable representing the gender of the closest-age sibling, comparing participants with a male closest-age sibling to participants with a female closest-age sibling; and d) dichotomous variable representing the gender match of the closest-age sibling and the participant, comparing gender-matched sibling dyads to non-gender-matched sibling dyads.

Analyses of group differences in sibling constellations based on demographic and individual descriptive factors are provided in Appendix 1. As seen in Appendix 1, the presence of a sibling factor differed in race, caregiver education, site, and VIQ. Within the birth order factor, participants varied in site, number of children in the family, and CSS. Related to the gender of the closest-age sibling, participants differed in site and VIQ. Participants did not significantly differ within the sibling dyad gender match factor. Sibling constellation descriptive information separated by race is provided in Appendix 2. As described below, demographic and individual descriptive factors were addressed and controlled in further analyses.

Primary Analyses.—Change in VABS-AEs from late childhood into adulthood was examined using multilevel models via the MIXED procedure in Stata version 16. First, a null model with no predictors was used to test whether random effects capturing between-participant and between-recruitment site was appropriate (Luke, 2020). Second, an unconditional growth model was developed to examine the rate of change of VABS-AEs as a function of participant age as a fixed effect. Linear and quadratic models of age were compared using log-likelihood values. Third, we tested whether allowing age slopes to vary between recruitment sites and between individuals improved model fit. Fourth, the demographic and individual descriptive covariates including gender, race, caregiver education, VIQ, CSS, and history of ASD of the closest-age sibling were tested to examine whether they interacted with age in the baseline model.

The factors were tested individually, comparing the new model to the original baseline model. If a factor significantly interacted with age, it was included as a covariate in the full baseline model. Finally, sibling constellation factors were entered as interaction terms to test the hypotheses. From the full baseline model, a series of four mixed models were developed to investigate whether the presence of a sibling in the family, the position of the

participant in the birth order, the gender of the closest-age sibling, and the gender match of the sibling dyad interacted with the rate of change in participant VABS-AEs. These factors and their interaction with age were entered into separate models for each constellation factor. A likelihood ratio test was used to examine the goodness of fit of the models. Post hoc Scheffe's tests were used for slope contrasts on sibling constellation factors. Missing data across time was assumed to be missing at random and estimated using restricted maximum likelihood estimation. Given the number of analyses, we used a stringent alpha of .01 to identify clear statistical significance. However, noting the small samples within the subgroups of each sibling constellation factor, we reported trends for larger alphas (.01-.05).

Participant and Community Involvement

Participants' and their families' interest in the role of the family context on participant development served as the impetus for the present study. While participants were not involved in the design of the study nor asked to advise on the interpretation or writing of the results, they were provided updates on the study results.

Results

Primary Baseline Model Analyses

The null model without predictors revealed that significant variation in VABS-AEs could be attributed to recruitment site differences ($ICC = 0.25$) nested in between-participant differences ($ICC = 0.44$). Linear and quadratic models of age as a fixed effect were then tested, revealing no significant improvement in fit through the addition of the quadratic component ($p = .27$); thus, the parsimonious linear model was selected. Allowing the slope to vary between recruitment sites significantly improved model fit ($p < 0.001$).

The baseline model showed a positive trajectory in VABS-AEs from late childhood into adulthood as a function of age. On average, participants grew approximately 6 months in VABS-AEs every year ($p < .001$), although there was significant variability in the growth rates. Demographic and individual descriptive factors were then individually added to the model to assess their contributions to the model. Neither participant gender ($p = .17$), caregiver education ($p = .54$), nor closest-age sibling's history of ASD ($p = .52$) significantly interacted with age or contributed to explaining the variation in participant VABS-AEs beyond age. Participant race ($p = .003$), VIQ ($p < .001$), and CSS ($p < .001$) all had significant interactions with age and were retained as covariates in the full sibling constellation models.

Primary Sibling Constellation Models

Developmental trajectories of VABS-AEs were characterized for the following four sets of group contrasts: 1) only child vs. at least one sibling; 2) youngest vs. middle vs. oldest child; 3) female vs. male closest-age sibling; and 4) gender-matched vs. non-gender-matched sibling dyad. Given VABS-AEs were used, the changes in the trajectories within each group reflect the rate of yearly change in adaptive functioning from ages 9 to 26. Each sibling constellation was first tested in a two-way interaction between sibling constellation factor and age to examine potential differential growth patterns while including VIQ, CSS,

and race as covariates. Subsequent post-hoc interaction analyses revealed an unexpected three-way interaction between various sibling constellation factors, age, and race; thus, the three-way interaction with VIQ and CSS included as covariates was further explored. Two participants were excluded from the sample for three-way interaction analyses with race because they were neither White nor Black, and there were too few participants ($n = 2$) to create a third race category.

Presence of a Sibling.—The model examining the presence of a sibling compared to no siblings resulted in a main effect, such that participants with siblings presented with higher VABS-AEs across all times and experienced significantly steeper growth trajectories ($B = .49$; $SE = .02$) through adulthood compared to those with no siblings ($B = .39$; $SE = .04$; $p = .005$; see Figure 1a). The magnitude of this effect is evident upon assessing the increasing discrepancy in VABS-AEs in years between participants with and without siblings from ages 9 (0.75 years) to 14 (1.25 years) to 19 (1.76 years) to 26 (2.36 years; see Appendix 3).

Analyses also revealed a trend-level three-way interaction in the model between the presence of a sibling, age, and race ($p = .02$). Black participants without siblings ($B = .24$; $SE = .06$) had slower growth on VABS-AEs compared to Black participants with siblings ($B = .45$; $SE = .04$; $p = .001$), White participants with siblings ($B = .49$; $SE = .02$; $p < .001$), and White participants without siblings ($B = .46$; $SE = .04$; $p = .001$; see Figure 1b). There were no significant slope differences between Black participants with siblings and White participants with and without siblings.

While White and Black participants with siblings similarly demonstrated steeper growth on VABS-AEs compared to those without siblings, the magnitude of the difference over time was greater among Black participants. Whereas the discrepancy in age equivalents in years between White participants with and without siblings increased slightly (nonsignificant) from ages 9 (0.37 years) to 26 (0.84 years), the discrepancy in age equivalents in years between Black participants with and without siblings widened significantly from ages 9 (1.2 years) to 26 (4.53 years; see Appendix 3). Thus, differences in the rate of adaptive growth between participants with and without siblings were more pronounced among Black compared to White participants.

Position in Birth Order.—The model investigating the influence of birth order position on adaptive skill growth trajectories revealed no significant differences between youngest ($B = .51$; $SE = .03$), middle ($B = .44$; $SE = .04$), and oldest children ($B = .47$; $SE = .04$; $p = .078$; see Figure 2a). Analyses revealed a significant three-way interaction between birth order position, age, and race ($p = .008$), though no significant specific contrasts were found after adjusting for multiple comparisons. More specifically, there were no significant differences between White youngest ($B = .50$; $SE = .03$), middle ($B = .48$; $SE = .04$), and oldest child participants ($B = .50$; $SE = .04$), or between Black youngest ($B = .54$; $SE = .05$), middle ($B = .26$; $SE = .08$), and oldest child participants ($B = .37$; $SE = .06$) on growth of VABS-AEs (see Figure 2b).

Gender of Closest-Age Sibling.—The model examining the impact of the gender of the closest-age sibling on growth in adaptive skills revealed significantly steeper growth

among participants with a male ($B = .54$; $SE = .03$) compared to a female ($B = .44$; $SE = .03$) closest-age sibling ($p = .001$; see Figure 3a). Analyses of increasing discrepancies in VABS-AEs between those with a male versus female closest-age sibling at each age further illustrate this pattern (age 9: 0.86 years; age 14: 1.35 years; age 19: 1.83 years; age 26: 2.42 years), revealing that participants with a male closest-age sibling presented with greater adaptive skills and experienced faster rates of growth over time than participants with a female closest-age sibling (see Appendix 5).

Results again demonstrated a significant three-way interaction between the gender of the closest-age sibling, participant age, and participant race on growth in VABS-AEs ($p = .002$) from late childhood through adulthood. While no significant within-race differences were found between White participants with a male ($B = .58$; $SE = .03$) versus a female closest-age sibling ($B = .43$; $SE = .03$) and between Black participants with a male ($B = .41$; $SE = .05$) versus a female closest-age sibling ($B = .48$; $SE = .05$), a trend-level across-race difference emerged between White and Black participants with a male closest-age sibling suggesting greater growth among White participants ($p = .04$; see Figure 3b). Increasing discrepancies in VABS-AEs between White and Black participants with a male closest-age sibling from ages 9 (1.39 years) to 14 (2.24 years) to 19 (3.1 years) to 26 (4.13 years) demonstrate this growing effect over time (see Appendix 5).

Gender Match of Sibling Dyad.—The model revealed a trend-level interaction between participant age and gender match of the participant and closest-age sibling ($p = .023$), such that participants with a gender-matched sibling ($B = .52$; $SE = .03$) demonstrated steeper adaptive skill growth trajectories than participants with a non-gender-matched sibling ($B = .46$; $SE = .03$; see Figure 4). The increasing discrepancies in VABS-AEs between gender-matched and nongender-matched participants from ages 9 (0.66 years) to 14 (1 year) to 19 (1.34 years) to 26 (1.75 years) further elucidate this effect (see Appendix 6). The three-way interaction between gender match of the sibling dyad, participant age, and participant race was not significant.

Discussion

This study was the first to examine the influence of siblings and various sibling constellation factors on adaptive behavior trajectories among individuals with ASD from late childhood through adulthood. Findings revealed that while all participants showed a positive trajectory of adaptive skill development as a function of age, with an average growth of six months per year, there was significant variability in rates of growth based on group membership within the following sibling constellation factors: presence of a sibling, position in birth order, gender of the closest-age sibling, and gender match (same or different genders) between the participant and closest-age sibling.

Presence of a Sibling

Participants with siblings experienced significantly steeper adaptive skill growth trajectories from childhood through adulthood compared to participants without siblings, even after controlling for demographic and individual descriptive factors. Findings provide preliminary support for the importance of siblings on adaptive skill development in ASD and are

consistent with existing literature detailing the positive influence of siblings on development, specifically in the areas of theory of mind (Matthews et al., 2013; Matthews & Goldberg, 2018; O'Brien et al., 2011), social communication (Ben-Itzhak et al., 2019), and non-verbal communication (Ben-Itzhak et al., 2016).

White and Black participants demonstrated similar patterns of greater growth in adaptive skills at trend level among those with one or more siblings compared to those without siblings, though differences in intensity were noted showing a magnified effect among Black participants. These racial differences in VABS-AEs across time should be interpreted with caution given the various confounding variables that likely contribute to the findings. Upon analyzing participants based on within-race demographic differences, both White and Black participants with no siblings were significantly more likely to have caregivers with lower levels of education ($p = .002$; $p = .038$) and to live in single-caregiver homes ($p = .001$; $p = .005$) compared to participants with one or more siblings (see Appendix 2), with Black participants with no siblings having significantly lower caregiver education ($p = .038$) and a higher proportion of single-caregiver homes ($p = .002$) compared to White participants with no siblings. Furthermore, although we controlled for VIQ in analyses, it is worth noting that participants with no siblings had lower VIQs across both races than participants with one or more siblings ($p = .018$), and Black participants with no siblings had lower VIQs than White participants with no siblings ($p = .03$). Given that these children were primarily recruited at age 2 through early diagnoses of autism, and knowing that children with higher VIQs and children from Black families for many years received diagnoses later than children with lower VIQs and children from White families, it is possible that the observed differences were related to recruitment effects (Maenner et al., 2020). The substantial number of both Black and White families in our sample allowed for these comparisons, though replication with larger, more diverse samples will be important.

Position in Birth Order

Our finding of no effects of position in the birth order among participants with siblings is interesting, given the existing literature on sibling interactions shows that, irrespective of birth order position, role asymmetries develop across time for sibling dyads involving an individual with developmental disabilities (Stoneman et al., 1989). Across birth order positions, typically developing siblings may adopt the older sibling “teacher” role while individuals with developmental disabilities adopt the younger sibling “learner” role (Knott et al., 1995; Orsmond & Seltzer, 2000; Stoneman et al., 1989). The similar improvement in adaptive skills among individuals with ASD across birth order positions may also reflect unique benefits derived from both younger and older positions in dyads. For example, individuals with ASD with older siblings may benefit from more mature, scaffolded, and overall supportive interactions, while individuals with ASD with younger siblings may experience growth through interacting with siblings who more closely match their mentalizing abilities (at least for a short time), which may allow for naturalistic interactions without significant scaffolding that are more representative of peer interactions (Matthews et al., 2013).

Despite a significant three-way interaction with race and large slope differences, no significant contrasts were found after adjusting for multiple comparisons; results showed consistent unexplained error that could not be attributed to variables included in the present analyses. Given the paucity of research assessing the impact of race and birth order position on adaptive functioning in ASD, the current findings emphasize the need for future research to analyze the influence of birth order, specifically among Black participants with multiple children in the family, on adaptive skill trajectories in ASD.

Gender of Closest-Age Sibling

Given the lack of research on the influence of the gender of the closest-age sibling on adaptive skill trajectories in ASD, results identifying a significant advantage of having a male compared to a female closest-age sibling should be interpreted as preliminary, requiring replication. Though the magnitude of the yearly growth difference may initially appear small (1.2 more months of growth per year), the practical significance is large, equating to almost 3 years (33.6 months) more growth in adaptive skills across the 28-year study. While the connection between quality of sibling relationships and adaptive skill development in ASD is unknown, findings from the current study appear to run counter to the female sibling advantage observed in the sibling relationship literature related to caregiving, companionship, and positive affect (Orsmond & Seltzer, 2000; Seltzer et al., 1991), though Orsmond and Seltzer (2007) importantly note additional factors including greater similarity among siblings (i.e., in education level, physical proximity, functional abilities) that may drive sibling closeness and potentially confound gender influence. Future studies are therefore needed to replicate current findings, assess the connection between sibling relationship and growth in adaptive skills, and analyze the role of sibling similarity on adaptive functioning trajectories.

The influence of race requires further examination. The present study noted greater growth in adaptive skills at trend level among White participants with a male closest-age sibling compared to Black participants with a male closest-age sibling. Notably, while not significant, within-race differences were found that suggest a slight advantage of having a male compared to a female closest-age sibling among White participants, and the opposite slight advantage of having a female compared to a male closest-age sibling among Black participants. These differences in race are not easily understood and have not previously been explored in research, and thus require further examination with larger samples across races to better understand these patterns.

Gender Match of Sibling Dyad

Findings of faster adaptive skill growth at trend level among participants with a same-gender compared to a different-gender closest-age sibling are consistent with existing sibling relationship literature favoring same-gender sibling dyads. Specifically, previous research involving individuals with developmental disabilities found that mothers reported more warmth in the sibling relationship among same-gender sibling dyads (Begum & Blacher, 2011). The gender match advantage has also been observed in the typical development literature, revealing that same-gender dyads experience greater social learning through modeling than different-gender dyads (McHale et al., 2012).

Further research on the gender match of the sibling dyad and the gender of the closest-age sibling is required. An interesting pattern was noted by Orsmond and Seltzer (2000), such that while sisters show patterns of high involvement in the sibling relationship regardless of the gender of the individual with disabilities, brothers' level of involvement appears to be gender match dependent (Orsmond & Seltzer, 2000). Specifically, brothers with male siblings with developmental disabilities showed greater involvement in and reported more positive feelings about the sibling relationship than brothers with female siblings with developmental disabilities (Orsmond & Seltzer, 2000). Given the small number of female compared to male participants in the current study, future research should replicate findings using larger samples of females with ASD to better understand the generalizability of the gender match findings.

Limitations and Implications for Future Research

This study has several limitations, some of which have been described previously. Characteristic of most longitudinal studies, attrition has affected the sample across the 28-year study, with increased participant dropout noted among Black participants. Further, the sample described here is relatively small given the number of analyses, with fewer Black compared to White participants. The representativeness of the diversity in the sample is limited with only White and Black participants, and observed racial differences likely reflect differences in a host of variables that are nested within race in our study including maternal education (our measure of social class), marital status, and age of parent (on the birth order factor). Thus, it will be important for future studies to include sufficient samples of participants from different backgrounds to better disentangle race from other confounds. Lastly, participants were primarily referred for diagnostic evaluations 28 years ago and may not represent referrals and amount of early intervention available today in the U.S.

Future studies are needed to replicate the present findings in diverse racial and ethnic groups, as well as to explore the influence of sibling constellation factors on the specific domains that comprise adaptive behavior to further understand the relationship in ASD. Additionally, given the importance of siblings on adaptive functioning, more research is needed to assess if there are specific qualities of siblings (e.g., adaptive, social, and/or emotional functioning) or sibling relationships that drive improvement in adaptive functioning in ASD. Furthermore, while our study included siblings closest in age to participants in analyses because age differences have been shown to impact the frequency of sibling contact (Ben-Itzhak et al., 2019; Tomeny et al., 2012), future research should replicate the study using other siblings (non-closest-age) in the family. Lastly, future work should assess the impact of siblings on the adaptive functioning profiles of individuals with other non-ASD developmental disorders.

Conclusion

This longitudinal study aimed to assess the influence of sibling constellation factors on adaptive skills trajectories from late childhood through adulthood among individuals with ASD. Results highlight the importance of siblings on development in ASD; participants with siblings, regardless of birth order position, experienced significantly greater rates of

adaptive skill growth than participants without siblings. Additional benefits were noted when closest-age siblings were male and when participants were the same gender as their closest-age siblings. Our study also revealed potential race effects; findings were largely similar for White and Black participants, though there were differences in the size of effects which require replication. This study may be helpful for family planning decisions because many families wonder about the impact of having multiple children on the development of the child with ASD given the recurrence risk of ASD in siblings. This study suggests that having a sibling, regardless of birth order position and ASD diagnosis, has positive effects on adaptive behavior development in ASD. Findings may also inform intervention planning, when it is appropriate for siblings to be involved, to ultimately maximize adaptive skill development and optimize long-term outcomes among individuals with ASD.

Appendix

Appendix

Appendix 1.

Sibling constellation descriptives and group difference analyses.

	Presence of a Sibling			Participant Position in Birth Order				Closest-Age Sibling Gender			Sibling Dyad (Participant + Closest-Age Sibling) Gender Match		
	No Sibling	1+ Sibling	χ^2/F	Youngest Child	Middle Child	Oldest Child	χ^2/F	Male Sibling	Female Sibling	χ^2/F	No Gender Match	Gender Match	χ^2/F
N	48	160	---	83	36	41	---	80	80	---	83	77	---
Male <i>N</i> (%)	38 (79.2%)	127 (79.4%)	0.01	65 (78.3%)	29 (80.6%)	33 (80.5%)	0.12	62 (77.5%)	65 (81.3%)	0.34	65 (78.3%)	62 (80.5%)	0.12
White <i>N</i> (%)	31 (64.6%)	129 (80.6%)	5.35*	67 (80.7%)	29 (80.6%)	33 (80.5%)	0.01	62 (77.5%)	67 (83.8%)	1	69 (83.1%)	60 (77.9%)	0.69
Caregiver Education- College Degree+ <i>N</i> (%)	11 (22.9%)	92 (57.5%)	17.67***	48 (57.8%)	18 (50%)	26 (63.4%)	1.42	47 (58.8%)	45 (56.3%)	0.1	48 (57.8%)	44 (57.1%)	0.01
Site North Carolina <i>N</i> (%)	33 (68.8%)	71 (44.4%)	8.8*	42 (50.6%)	14 (38.9%)	15 (36.6%)	18.53***	34 (42.5%)	37 (46.3%)	6.05*	32 (38.6%)	39 (50.6%)	3.44
Participant ASD dx <i>N</i> (%)	34 (70.8%)	127 (79.4%)	1.54	64 (77.1%)	33 (91.7%)	30 (73.2%)	4.55	60 (75%)	67 (83.8%)	1.87	65 (78.3%)	62 (80.5%)	0.12
Sibling ASD dx <i>N</i> (%)	---	21 (13.1%)	---	11 (13.3%)	2 (5.6%)	8 (19.5%)	3.28	14 (17.5%)	7 (8.8%)	2.69	10 (12%)	11 (14.3%)	0.18
VIQ <i>M</i> (<i>SD</i>)	47.31 (36.52)	61.99 (37.67)	5.68*	64.02 (36.93)	51.11 (33.06)	67.41 (41.76)	2.08	68.31 (39.2)	55.66 (35.2)	4.61*	58.16 (36.93)	66.12 (38.27)	1.79
ADOS CSS <i>M</i> (<i>SD</i>)	5.98 (2.85)	5.94 (2.97)	0.01	5.83 (3.03)	6.94 (2.81)	5.27 (2.82)	3.25*	5.75 (3.11)	6.13 (2.83)	0.64	5.84 (3.02)	6.04 (2.93)	0.17
# of Siblings Includes Participant <i>M</i> (<i>SD</i>)	1 (0)	2.75 (1)	---	2.48 (0.86)	3.67 (0.83)	2.49 (0.95)	25.33***	2.74 (0.92)	2.76 (1.08)	0.03	2.67 (0.98)	2.83 (1.03)	0.97

Note: ASD dx: autism spectrum disorder diagnosis (diagnostic history); VIQ: verbal intelligence quotient; ADOS CSS: Autism Diagnostic Observation Schedule calibrated severity score. Significant group differences within each sibling constellation factor are shown with

* $p < .05$

** $p < .01$

and

*** $p < .001$.

Appendix 2.

Racial breakdown of sibling constellation descriptives.

	Presence of a Sibling		Participant Position in Birth Order			Closest-Age Sibling Gender		Sibling Dyad (Participant + Closest-Age Sibling) Gender Match	
	No Sibling	1+ Sibling	Youngest Child	Middle Child	Oldest Child	Male Sibling	Female Sibling	No Gender Match	Gender Match
N	31	129	67	29	33	62	67	69	60
	17	31	16	7	8	18	13	14	17
Male <i>N</i>	24	103	53	23	27	48	55	55	48
(%)	(77.4%)	(79.8%)	(79.1%)	(79.3%)	(81.8%)	(77.4%)	(82.1%)	(79.7%)	(80%)
	14	24	12 (75%)	6 (85.7%)	6 (75%)	14 (77.8%)	10 (76.9%)	10 (71.4%)	14 (82.4%)
Caregiver Education-College Degree+ <i>N</i>	10	82	42	17	23	41	41	41	41
(%)	(32.3%)	(63.6%)	(62.7%)	(58.6%)	(69.7%)	(66.1%)	(61.2%)	(59.4%)	(68.4%)
	1	10	6 (37.5%)	1 (14.3%)	3 (37.5%)	6 (33.4%)	4 (30.8%)	7 (50%)	3 (17.7%)
Site - North Carolina <i>N</i>	20	45	28	8	9	20	25	21	24
(%)	(64.5%)	(34.9%)	(41.8%)	(27.6%)	(27.3%)	(32.3%)	(37.3%)	(30.4%)	(40%)
	13	26	14 (87.5%)	6 (85.7%)	6 (75%)	14 (77.8%)	12 (92.3%)	11 (78.6%)	15 (88.2%)
Participant ASD dx <i>N</i>	22	99	49	27	23	45	54	52	47
(%)	(71%)	(76.7%)	(73.1%)	(93.1%)	(69.7%)	(72.6%)	(80.6%)	(75.4%)	(78.3%)
	12	28	15 (93.8%)	6 (85.7%)	7 (87.5%)	15 (83.3%)	13 (100%)	13 (92.9%)	15 (88.2%)
Sibling ASD dx <i>N</i>	---	16	6 (9%)	2 (6.9%)	8 (24.2%)	11 (17.7%)	5 (7.5%)	9 (13%)	7 (11.7%)
(%)	---	(12.4%)	5 (31.3%)	0 (0%)	0 (0%)	3 (16.7%)	2 (15.4%)	1 (7.1%)	4 (23.5%)
	---	5 (16.1%)	---	---	---	---	---	---	---
VIQ <i>M</i>	55.71	65.35	65.81	54.93	73.58	74.18	57.18	59.83	71.7
(<i>SD</i>)	(38.54)	(37.72)	(37.53)	(33.54)	(40.42)	(38.9)	(34.93)	(36.96)	(37.89)
	32	48	56.56	35.29	42	48.11	47.85	49.93	46.41
	(27.32)	(34.65)	(34.42)	(27.6)	(39.77)	(33.98)	(36.95)	(37)	(33.65)
ADOS CSS <i>M</i>	5.84	5.74	5.55	6.83	5.15	5.45	6(2.94)	5.72	5.75
(<i>SD</i>)	(2.63)	(3.05)	(3.17)	(2.84)	(2.82)	(3.17)	(2.17)	(3.12)	(3.0)
	6.24	6.77	7 (2.03)	7.43	5.75	6.78	6.77	6.43	7.06
	(3.27)	(2.47)	(2.82)	(2.82)	(2.96)	(2.73)	(2.17)	(2.5)	(2.49)
# of Siblings Includes Participant <i>M</i>	1 (0)	2.7	2.39	3.76	2.39	2.74	2.66	2.62	2.78
(<i>SD</i>)	(0)	(0.93)	(0.65)	(0.87)	(0.79)	(0.96)	(0.91)	(0.93)	(0.94)
	1 (0)	2.97	2.88	3.29	2.88	2.72	3.31	2.93	3 (1.32)
	(0)	(1.25)	(1.41)	(0.49)	(1.46)	(0.83)	(1.65)	(1.21)	(1.32)

Note: ASD dx: autism spectrum disorder diagnosis (diagnostic history); VIQ: verbal intelligence quotient; ADOS CSS: Autism Diagnostic Observation Schedule calibrated severity score. Two data points are listed within each descriptive characteristic of each sibling constellation factor: the top value represents White participants, and the bottom value represents Black participants.

Appendix 3.

Mean age equivalents across time by presence of a sibling and by presence of a sibling + race.

Chronological Age	Presence of a Sibling	Mean Age Equivalents	Standard Error
9	No Siblings	4.01	0.25
	White + No Siblings	4.50	0.28
	Black + No Siblings	3.01	0.36
9	1+ Siblings	4.76	0.17
	White + 1+ Siblings	4.87	0.17
	Black + 1+ Siblings	4.21	0.26
12	No Siblings	5.17	0.31
	White + No Siblings	5.90	0.35
	Black + No Siblings	3.72	0.45
12	1+ Siblings	6.22	0.22
	White + 1+ Siblings	6.35	0.21
	Black + 1+ Siblings	5.55	0.31
14	No Siblings	5.94	0.36
	White + No Siblings	6.83	0.41
	Black + No Siblings	4.20	0.53
14	1+ Siblings	7.19	0.25
	White + 1+ Siblings	7.34	0.24
	Black + 1+ Siblings	6.44	0.35
19	No Siblings	7.87	0.52
	White + No Siblings	9.15	0.58
	Black + No Siblings	5.39	0.77
19	1+ Siblings	9.63	0.35
	White + 1+ Siblings	9.81	0.34
	Black + 1+ Siblings	8.67	0.49
21	No Siblings	8.64	0.58
	White + No Siblings	10.08	0.66
	Black + No Siblings	5.86	0.87
21	1+ Siblings	10.60	0.39
	White + 1+ Siblings	10.80	0.38
	Black + 1+ Siblings	9.56	0.56
26	No Siblings	10.19	0.72
	White + No Siblings	11.94	0.81
	Black + No Siblings	6.81	1.08
26	1+ Siblings	12.55	0.47
	White + 1+ Siblings	12.78	0.46
	Black + 1+ Siblings	11.34	0.68

Appendix 4.

Mean age equivalents across time by participant position in birth order and by participant position in birth order + race.

Chronological Age	Position in Birth Order	Mean Age Equivalents	Standard Error
9	Youngest Child	4.82	0.21
	White + Youngest Child	4.75	0.27
	Black + Youngest Child	4.85	0.38
9	Middle Child	4.32	0.26
	White + Middle Child	4.52	0.32
	Black + Middle Child	2.91	0.52
9	Oldest Child	5.06	0.26
	White + Oldest Child	5.28	0.32
	Black + Oldest Child	4.12	0.47
12	Youngest Child	6.35	0.26
	White + Youngest Child	6.26	0.30
	Black + Youngest Child	6.47	0.41
12	Middle Child	5.65	0.31
	White + Middle Child	5.97	0.34
	Black + Middle Child	3.69	0.59
12	Oldest Child	6.46	0.29
	White + Oldest Child	6.78	0.33
	Black + Oldest Child	5.24	0.51
14	Youngest Child	7.37	0.30
	White + Youngest Child	7.26	0.32
	Black + Youngest Child	7.55	0.46
14	Middle Child	6.53	0.35
	White + Middle Child	6.93	0.38
	Black + Middle Child	4.21	0.68
14	Oldest Child	7.39	0.34
	White + Oldest Child	7.78	0.36
	Black + Oldest Child	5.98	0.57
19	Youngest Child	9.91	0.41
	White + Youngest Child	9.77	0.41
	Black + Youngest Child	10.24	0.62
19	Middle Child	8.74	0.50
	White + Middle Child	9.33	0.51
	Black + Middle Child	5.52	0.98
19	Oldest Child	9.73	0.47
	White + Oldest Child	10.27	0.48
	Black + Oldest Child	7.84	0.80

Chronological Age	Position in Birth Order	Mean Age Equivalents	Standard Error
21	Youngest Child	10.93	0.46
	White + Youngest Child	10.78	0.45
	Black + Youngest Child	11.32	0.70
21	Middle Child	9.63	0.56
	White + Middle Child	10.29	0.57
	Black + Middle Child	6.05	1.11
21	Oldest Child	10.66	0.53
	White + Oldest Child	11.27	0.54
	Black + Oldest Child	8.59	0.90
26	Youngest Child	12.96	0.56
	White + Youngest Child	12.79	0.54
	Black + Youngest Child	13.47	0.86
26	Middle Child	11.39	0.69
	White + Middle Child	12.22	0.69
	Black + Middle Child	7.10	1.39
26	Oldest Child	12.53	0.66
	White + Oldest Child	13.26	0.67
	Black + Oldest Child	10.07	1.13

Appendix 5.

Mean age equivalents across time by gender of closest-age sibling and by gender of closest-age sibling + race.

Chronological Age	Closest-Age Sibling Gender	Mean Age Equivalents	Standard Error
9	Sibling Male	5.15	0.27
	White + Sibling Male	5.41	0.31
	Black + Sibling Male	4.02	0.40
9	Sibling Female	4.29	0.27
	White + Sibling Female	4.21	0.31
	Black + Sibling Female	4.47	0.41
12	Sibling Male	6.77	0.30
	White + Sibling Male	7.14	0.33
	Black + Sibling Male	5.24	0.44
12	Sibling Female	5.62	0.30
	White + Sibling Female	5.51	0.33
	Black + Sibling Female	5.92	0.44
14	Sibling Male	7.85	0.33
	White + Sibling Male	8.29	0.35
	Black + Sibling Male	6.05	0.49

Chronological Age	Closest-Age Sibling Gender	Mean Age Equivalents	Standard Error
14	Sibling Female	6.50	0.33
	White + Sibling Female	6.38	0.35
	Black + Sibling Female	6.88	0.49
19	Sibling Male	10.54	0.42
	White + Sibling Male	11.18	0.44
	Black + Sibling Male	8.08	0.66
19	Sibling Female	8.71	0.42
	White + Sibling Female	8.55	0.43
	Black + Sibling Female	9.29	0.64
21	Sibling Male	11.62	0.47
	White + Sibling Male	12.33	0.48
	Black + Sibling Male	8.89	0.74
21	Sibling Female	9.59	0.46
	White + Sibling Female	9.41	0.47
	Black + Sibling Female	10.26	0.72
26	Sibling Male	13.78	0.56
	White + Sibling Male	14.64	0.57
	Black + Sibling Male	10.51	0.92
26	Sibling Female	11.36	0.55
	White + Sibling Female	11.15	0.56
	Black + Sibling Female	12.19	0.88

Appendix 6.

Mean age equivalents across time by gender match of participant and closest-age sibling.

Chronological Age	Sibling Dyad Gender Match	Mean Age Equivalents	Standard Error
9	No Gender Match	4.40	0.27
	Gender Match	5.06	0.27
12	No Gender Match	5.77	0.31
	Gender Match	6.64	0.31
14	No Gender Match	6.68	0.34
	Gender Match	7.68	0.34
19	No Gender Match	8.96	0.44
	Gender Match	10.30	0.45
21	No Gender Match	9.87	0.48
	Gender Match	11.35	0.49
26	No Gender Match	11.70	0.58
	Gender Match	13.45	0.59

References

- Anderson DK, Liang JW, & Lord C (2014). Predicting young adult outcome among more and less cognitively able individuals with autism spectrum disorders. *Journal of Child Psychology and Psychiatry*, 55(5), 485–494. [PubMed: 24313878]
- Autistica. (2020). Retrieved from www.autistica.org.uk/
- Bal VH, Kim SH, Cheong D, & Lord C (2015). Daily living skills in individuals with autism spectrum disorder from 2 to 21 years of age. *Autism*, 19(7), 774–784. [PubMed: 25922445]
- Bass JD, & Mulick JA (2007). Social play skill enhancement of children with autism using peers and siblings as therapists. *Psychology in the Schools*, 44(7), 727–735.
- Begum G, & Blacher J (2011). The siblings relationship of adolescents with and without intellectual disabilities. *Research in Developmental Disabilities*, 32(5), 1580–1588. [PubMed: 21388782]
- Ben-Itzhak E, Zukerman G, & Zachor DA (2016). Having older siblings is associated with less severe social communication symptoms in young children with autism spectrum disorder. *Journal of Abnormal Child Psychology*, 44(8), 1613–1620. [PubMed: 26843212]
- Ben-Itzhak E, Nachshon N, & Zachor DA (2019). Having siblings is associated with better social functioning in autism spectrum disorder. *Journal of Abnormal Child Psychology*, 47(5), 921–931. [PubMed: 30280363]
- Black SE, Devereux PJ, & Salvanes KG (2005). The more the merrier? The effect of family size and birth order on children's education. *The Quarterly Journal of Economics*, 120(2), 669–700.
- Brewton CM, Nowell KP, Lasala MW, & Goin-Kochel RP (2012). Relationship between the social functioning of children with autism spectrum disorders and their siblings' competencies/problem behaviors. *Research in Autism Spectrum Disorder*, 6(2), 646–653.
- Carter AS, Volkmar FR, Sparrow SS, Wang JJ, Lord C, Dawson G, Fombonne E, Loveland K, Mesibov G, & Schopler E (1998). The Vineland Adaptive Behavior Scales: Supplementary norms for individuals with autism. *Journal of Autism and Developmental Disorders*, 28(4), 287–302. [PubMed: 9711485]
- Celiberti DA, & Harris SL (1993). Behavioral intervention for siblings of children with autism: A focus on skills to enhance play. *Behavior Therapy*, 24(4), 573–599.
- Cicirelli VG (1982). Sibling influence throughout the lifespan. *Sibling relationships: Their nature and significance across the lifespan*, 267–284.
- Cicirelli VG (1995). *Sibling Relationships Across the Lifespan*. New York: Plenum Publishers.
- Coe DA, Matson JL, Craigie CJ, & Gossen MA (1991). Play skills of autistic children: Assessment and instruction. *Child & Family Behavior Therapy*, 13(3), 13–40.
- Elliott C, D. (1990). *Differential Ability Scales (DAS)*. San Antonio, TX: Psychological Corporation.
- Elliott C, D. (2007). *Differential Ability Scales—Second Edition (DAS-II)*. San Antonio, TX: Psychological Corporation.
- El-Ghoroury NH, & Romanczyk RG (1999). Play interactions of family members towards children with autism. *Journal of Autism and Developmental Disorders*, 29(3), 249–258. [PubMed: 10425587]
- Farley MA, McMahon WM, Fombonne E, Jenson WR, Miller J, Gardner M, Block H, Pingree C, Ritvo E, Ritvo RA, & Coon H (2009). Twenty-year outcome for individuals with autism and average or near-average cognitive abilities. *Autism Research*, 2(2), 109–118. [PubMed: 19455645]
- Ferraioli SJ, & Harris SL (2011). Teaching joint attention to children with autism through a sibling-mediated behavioral intervention. *Behavioral Interventions*, 26(4), 261–281.
- Freeman BJ, Del'Homme M, Guthrie D, & Zhang F (1999). Vineland Adaptive Behavior Scale scores as a function of age and initial IQ in 210 autistic children. *Journal of Autism and Developmental Disorders*, 29(5), 379–384. [PubMed: 10587884]
- Gotham K, Pickles A, & Lord C (2009). Standardizing ADOS scores for a measure of severity in autism spectrum disorders. *Journal of Autism and Developmental Disorders*, 39(5), 693–705. [PubMed: 19082876]

- Howlin P, Mawhood L, & Rutter M (2000). Autism and developmental receptive language disorder —A follow-up comparison in early adult life. II: Social, behavioural, and psychiatric outcomes. *Journal of Child Psychology and Psychiatry*, 41(5), 561–578. [PubMed: 10946749]
- Knott F, Lewis C, & Williams T (1995). Sibling interaction of children with learning disabilities: A comparison of autism and Down's syndrome. *Journal of Child Psychology and Psychiatry*, 36(6), 965–976. [PubMed: 7593404]
- Knott F, Lewis C, & Williams T (2007). Sibling interaction of children with autism: Development over 12 months. *Journal of Autism and Developmental Disorders*, 37(10), 1987–1995. [PubMed: 17310402]
- Lord C, Risi S, Lambrecht L, Cook EH Jr., Leventhal BL, DiLavore PC, Pickles A, & Rutter M (2000). The *Autism Diagnostic Observation Schedule (ADOS)*–generic: A standard measure of social and communication deficits associated with the spectrum of autism. *Journal of Autism and Developmental Disorders*, 30, 205–223. doi:10.1023/A:1005592401947. [PubMed: 11055457]
- Lord C, Risi S, DiLavore PS, Shulman C, Thurm A, & Pickles A (2006). Autism from 2 to 9 years of age. *Archives of General Psychiatry*, 63(6), 694–701. [PubMed: 16754843]
- Lord C, McCauley JB, Pepa LA, Huerta M, & Pickles A (2020). Work, living, and the pursuit of happiness: Vocational and psychosocial outcomes for young adults with autism. *Autism*, 24(7), 1691–1703. [PubMed: 32431163]
- Luke DA (2020). *Multilevel modeling* (Vol. 143). SAGE Publications, Incorporated.
- Maenner MJ, Shaw KA, & Baio J (2020). Prevalence of autism spectrum disorder among children aged 8 years—Autism and developmental disabilities monitoring network, 11 sites, United States, 2016. *MMWR Surveillance Summaries*, 69(4), 1.
- Matthews NL, Goldberg WA, & Lukowski AF (2013). Theory of mind in children with autism spectrum disorder: Do siblings matter? *Autism Research*, 6(5), 443–453. [PubMed: 23843293]
- Matthews NL, & Goldberg WA (2018). Theory of mind in children with and without autism spectrum disorder: Associations with the sibling constellation. *Autism*, 22(3), 311–321. [PubMed: 29671641]
- McCauley JB, Pickles A, Huerta M, & Lord C (2020). Defining positive outcomes in more and less cognitively able autistic adults. *Autism Research*, 13(9), 1548–1560. [PubMed: 32851813]
- McGovern CW, & Sigman M (2005). Continuity and change from early childhood to adolescence in autism. *Journal of Child Psychology and Psychiatry*, 46(4), 401–408. [PubMed: 15819649]
- McHale SM, Updegraff KA, & Whiteman SD (2012). Sibling relationships and influences in childhood and adolescence. *Journal of Marriage and Family*, 74(5), 913–930. [PubMed: 24653527]
- O'Brien K, Slaughter V, & Peterson CC (2011). Sibling influences on theory of mind development for children with ASD. *Journal of Child Psychology and Psychiatry*, 52(6), 713–719. [PubMed: 21418062]
- Oliva A, & Arranz E (2005). Sibling relationships during adolescence. *European Journal of Developmental Psychology*, 2(3), 253–270.
- Orsmond GI, & Seltzer MM (2000). Brothers and sisters of adults with mental retardation: Gendered nature of the sibling relationship. *American Journal on Mental Retardation*, 105(6), 486–507. [PubMed: 11958202]
- Orsmond GI, & Seltzer MM (2007). Siblings of individuals with autism spectrum disorders across the life course. *Mental Retardation and Developmental Disabilities Research Reviews*, 13(4), 313–320. [PubMed: 17979200]
- Orsmond GI, & Kuo HY (2011). The daily lives of adolescents with an autism spectrum disorder: Discretionary time use and activity partners. *Autism*, 15(5), 579–599. [PubMed: 21697194]
- Rodrigue JR, Morgan SB, & Geffken GR (1991). A comparative evaluation of adaptive behavior in children and adolescents with autism, Down syndrome, and normal development. *Journal of Autism and Developmental Disorders*, 21(2), 187–196. [PubMed: 1830878]
- Schreibman L, O'Neill RE, & Koegel RL (1983). Behavioral training for siblings of autistic children. *Journal of Applied Behavior Analysis*, 16(2), 129–138. [PubMed: 6885667]
- Seltzer GB, Begun A, Seltzer MM, & Krauss MW (1991). Adults with mental retardation and their aging mothers: Impacts of siblings. *Family Relations*, 310–317.

- Shivers CM, & Plavnick JB (2015). Sibling involvement in interventions for individuals with autism spectrum disorders: A systematic review. *Journal of Autism and Developmental Disorders*, 45(3), 685–696. [PubMed: 25178988]
- Sparrow SS, Balla DA, & Cicchetti DV (1984). *Vineland Adaptive Behavior Scales (Expanded Form)*. Circle Pines, MN: American Guidance Service.
- Sparrow SS, Cicchetti DV, & Balla DA (2005). *Vineland Adaptive Behavior Scales (2nd ed.)*. American Guidance Service Inc.
- Steelman LC, Powell B, Werum R, & Carter S (2002). Reconsidering the effects of sibling configuration: Recent advances and challenges. *Annual Review of Sociology*, 28(1), 243–269.
- Stoneman Z (1989) Comparison groups in research on families with mentally retarded members: A methodological and conceptual review. *American Journal on Mental Retardation*, 94, 195–215. [PubMed: 2679805]
- Tillmann J, San José Cáceres A, Chatham CH, Crawley D, Holt R, Oakley B, Banaschewski T, Baron-Cohen S, Bölte S, Buitelaar JK, Durston S, Ham L, Loth E, Simonoff E, Spooren W, Murphy DG, & Charman T (2019). Investigating the factors underlying adaptive functioning in autism in the EU-AIMS Longitudinal European Autism Project. *Autism Research*, 12(4), 645–657. [PubMed: 30741482]
- Toman W (1993). *Family constellation: Its effects on personality and social behavior*. Springer Publishing Company.
- Tomeny TS, Barry TD, & Bader SH (2012). Are typically-developing siblings of children with an autism spectrum disorder at risk for behavioral, emotional, and social maladjustment?. *Research in Autism Spectrum Disorders*, 6(1), 508–518.
- Tsao LL, & Odom SL (2006). Sibling-mediated social interaction intervention for young children with autism. *Topics in Early Childhood Special Education*, 26(2), 106–123.
- Walton KM, & Ingersoll BR (2012). Evaluation of a sibling-mediated imitation intervention for young children with autism. *Journal of Positive Behavior Interventions*, 14(4), 241–253.
- Wechsler D (1991). *Manual for the Wechsler Intelligence Scale for Children – Third Edition (WISC-III)*. San Antonio, TX: Psychological Corporation.
- Wechsler D (1999). *Manual for the Wechsler Abbreviated Scale of Intelligence (WASI)*. San Antonio, TX: Psychological Corporation.
- Yang S, Paynter JM, & Gilmore L (2016). Vineland adaptive behavior scales: II profile of young children with autism spectrum disorder. *Journal of Autism and Developmental Disorders*, 46(1), 64–73. [PubMed: 26231205]

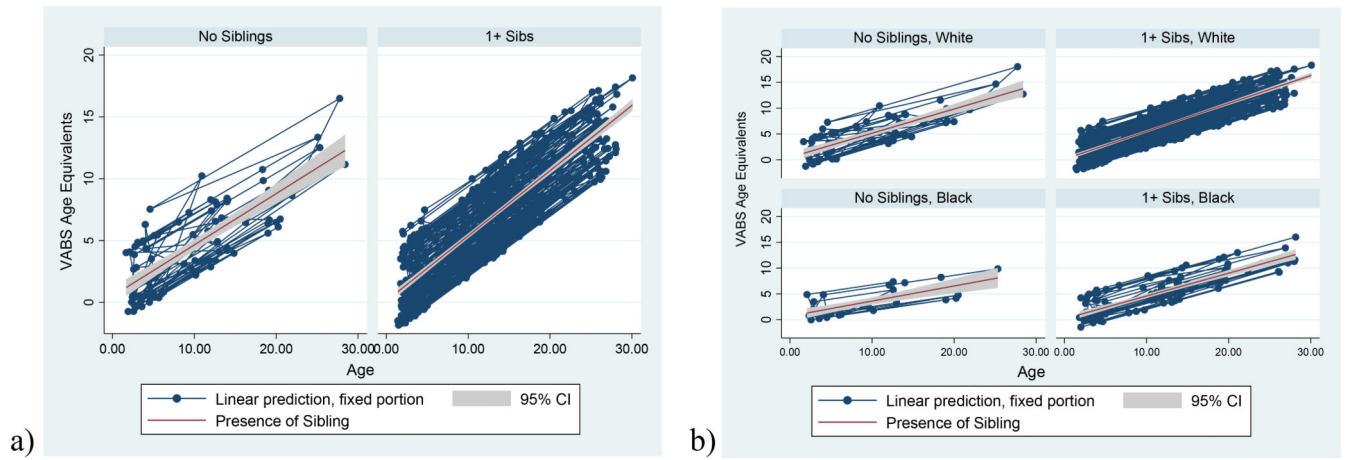


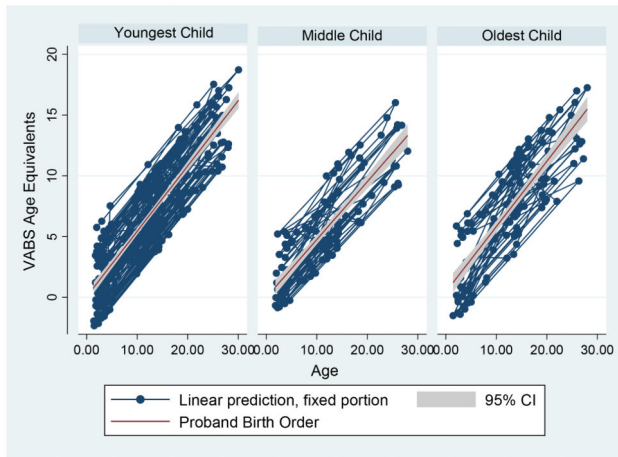
Figure 1.
Trajectories of VABS-AEs by a) presence of a sibling and by b) presence of a sibling + race.

Author Manuscript

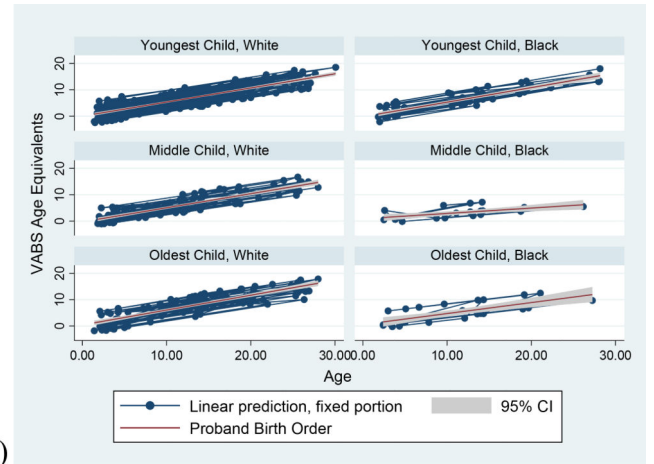
Author Manuscript

Author Manuscript

Author Manuscript



a)



b)

Figure 2. Trajectories of VABS-AEs by a) participant position in birth order and by b) participant position in birth order + race.

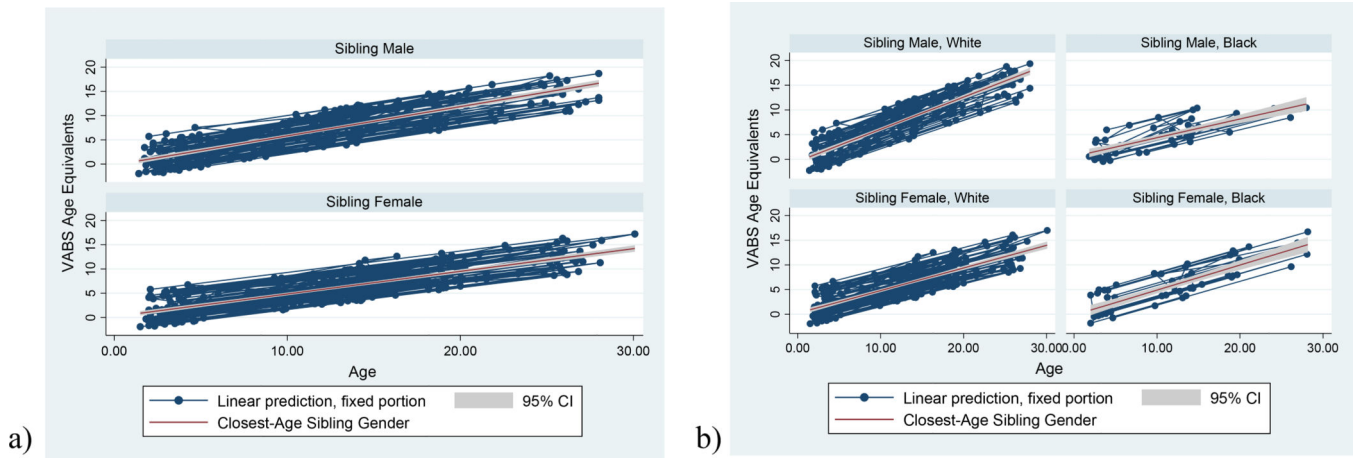


Figure 3. Trajectories of VABS-AEs by a) gender of closest-age sibling and by b) gender of closest-age sibling + race.

Author Manuscript

Author Manuscript

Author Manuscript

Author Manuscript

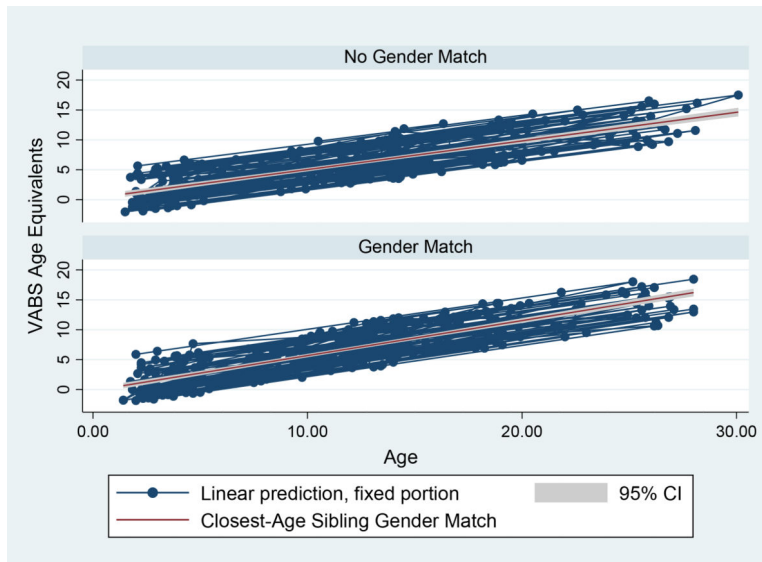


Figure 4. Trajectories of VABS-AEs by gender match of participant and closest-age sibling.

Author Manuscript

Author Manuscript

Author Manuscript

Author Manuscript

Table 1.

Sample demographic characteristics.

<i>N</i> = 208	
Male <i>N</i> (%)	165 (79.3%)
White <i>N</i> (%)	160 (76.9%)
Caregiver Education College Degree+ <i>N</i> (%)	103 (49.5%)
Site North Carolina	104 (50%)
Illinois	67 (32.2%)
Michigan <i>N</i> (%)	37 (17.8%)
ASD dx <i>N</i> (%)	161 (77.4%)
VIQ <i>M</i> (<i>SD</i>)	58.6 (37.83)
ADOS CSS <i>M</i> (<i>SD</i>)	5.95 (2.94)
Presence of 1+ Sibling <i>N</i> (%)	160 (76.9%)

Note: ASD dx: autism spectrum disorder diagnosis (diagnostic history); VIQ: verbal intelligence quotient; ADOS CSS: Autism Diagnostic Observation Schedule calibrated severity score.

Author Manuscript

Author Manuscript

Author Manuscript

Author Manuscript