

RESEARCH ARTICLE

Serum sodium on admission affects postoperative in-hospital mortality in acute aortic dissection patients

Pengfei Huang¹✉, Hongyan Wang¹✉, Dong Ma^{1,2*}, Yongbo Zhao^{3*}, Xiao Liu³, Peng Su¹, Jinjin Zhang¹, Shuo Ma¹, Zhe Pan¹, Juexin Shi¹, Fangfang Hou¹, Nana Zhang¹, Xiaohui Zheng¹, Nan Liu¹, Ling Zhang¹

1 School of Public Health, North China University of Science and Technology, Tangshan, Hebei, China, **2** Department of Biochemistry and Molecular Biology, Key Laboratory of Neural and Vascular Biology, Ministry of Education, Hebei Medical University, Shijiazhuang, Hebei, China, **3** Cardiac Surgery Department, The Fourth Hospital of Hebei Medical University, Shijiazhuang, Hebei, China

✉ These authors contributed equally to this work.

* mamamadong@163.com (DM); zhaoyongboyoueyue@163.com (YZ)



OPEN ACCESS

Citation: Huang P, Wang H, Ma D, Zhao Y, Liu X, Su P, et al. (2021) Serum sodium on admission affects postoperative in-hospital mortality in acute aortic dissection patients. PLoS ONE 16(12): e0261168. <https://doi.org/10.1371/journal.pone.0261168>

Editor: Michele Provenzano, Magna Graecia University of Catanzaro: Universita degli Studi Magna Graecia di Catanzaro, ITALY

Received: December 25, 2020

Accepted: November 28, 2021

Published: December 15, 2021

Peer Review History: PLOS recognizes the benefits of transparency in the peer review process; therefore, we enable the publication of all of the content of peer review and author responses alongside final, published articles. The editorial history of this article is available here: <https://doi.org/10.1371/journal.pone.0261168>

Copyright: © 2021 Huang et al. This is an open access article distributed under the terms of the [Creative Commons Attribution License](https://creativecommons.org/licenses/by/4.0/), which permits unrestricted use, distribution, and reproduction in any medium, provided the original author and source are credited.

Data Availability Statement: All relevant data are within the paper and its [Supporting Information](#) files.

Abstract

Background

Acute aortic dissection (AAD) is very fatal without surgical treatment. Higher serum sodium can increase in-hospital mortality of many diseases; however, the effect of serum sodium on postoperative in-hospital mortality in AAD patients remains unknown.

Methods

We collected a total of 415 AAD patients from January 2015 to December 2019. Patients were classified into four categories (Q1–Q4) according to the admission serum sodium quartile. The cox proportional hazards model evaluated the association between serum sodium and in-hospital mortality. All-cause in-hospital mortality was set as the endpoint.

Results

By adjusting many covariates, cox proportional hazards model revealed the in-hospital mortality risk of both Q3 and Q4 groups was 3.086 (1.242–7.671, $P = 0.015$) and 3.370 (1.384–8.204, $P = 0.007$) respectively, whereas the risk of Q2 group was not significantly increased. Univariate and multiple Cox analysis revealed that Stanford type A, serum glucose, α -hydroxybutyrate dehydrogenase and serum sodium were risk factors correlated with in-hospital death in AAD patients.

Conclusion

The study indicates that the admission serum sodium of AAD patients has a vital impact on postoperative hospital mortality.

Funding: Our gratitude goes to the National Natural Science Foundation of China (No.81700416) supported for this study. The funders had no role in study design, data collection and analysis, decision to publish, or preparation of the manuscript.

Competing interests: The authors declare no competing interests.

Introduction

Acute aortic dissection (AAD) has a high mortality rate, and the mortality risk for AAD patients increases by 1% per hour before medical and surgical intervention [1]. Presently, the best way to reduce mortality rate for AAD patients is timely operation. Despite increasingly rapid diagnosis and surgical management, the in-hospital mortality rate for AAD remains at >30% [2]. In addition, due to the change of economic level and residents' eating habits recently, the incidence rate of AAD remains rising.

Hypernatremia, defined as >145 mmol/L sodium levels, was reported in 2% of patients admitted to the emergency department [3]. The abnormal increase of serum sodium levels is positively associated with the mortality risk of patients with various diseases, like severe craniocerebral injury [4], aneurysm subarachnoid hemorrhage [5], and nervous system disease [6]. A study of an unrestricted hospitalized adult population in the United States reported that >142 mmol/L serum sodium concentration has been associated with mortality and different degrees of hypernatremia including mild, middle, and higher levels are associated with in-hospital mortality [7]. Even in a healthy population, higher levels of plasma sodium starting from 138 mmol/L were associated with a higher risk of mortality, especially when the sodium level exceeded 145 mmol/L [8, 9]. However, no study on the relationship between serum sodium upon admission and in-hospital mortality of AAD patients exists, since electrolyte disturbances in emergency AAD patients can easily be ignored. Therefore, this study aims to discuss whether the serum sodium associates with the postoperative in-hospital mortality of AAD patients.

Methods

Study population

This study was designed as a retrospective observational study that continuously collected data on AAD patients who underwent surgery in the Fourth Hospital of Hebei Medical University from January 2015 to December 2019. All patients were diagnosed by computed tomographic angiography (CTA) or magnetic resonance angiography (MRA), and medical history. The aortic dissection is considered as AAD if the time from the onset of the symptom to operation is within 14 days. Exclusion criteria included connective tissue diseases, pregnancy, traumatic dissection, and infection diseases as well as the severe lack of clinical data which is defined as the absence of complete hospitalization records, involving lack of blood glucose, blood pressure and other important indicators associated with the known risk factors of AAD. Except for basic information and indicators associated with the known risk factors of AAD, some other defect data were considered to be a moderate missing for some individual patients, who were included in the study.

All clinical data related to the study were obtained after approved by the ethics committee of the Fourth Hospital of Hebei Medical University. As patient data were anonymized, the ethics committee of the Fourth Hospital of Hebei Medical University waived the written informed consent. All procedures followed were in accordance with the revised Declaration of Helsinki.

Clinical data collection

Clinical variables of enrolled patients with AAD was obtained through review of medical records, including gender, age, Stanford type, medical history (hypertension, diabetes, coronary artery disease, prior surgery, prior trauma, smoking and drinking), vital signs on admission (systolic blood pressure, SBP; diastolic blood pressure, DBP; heart rate) and laboratory data on admission (alanine transaminase, ALT; aspartate transaminase, AST; creatinine; urea nitrogen;

serum glucose; α -hydroxybutyric dehydrogenase, α -HBDH; white blood cell count, WBC; neutrophil count, serum sodium, et al.) as well as the length of in-hospital [10]. Smoking is defined as at least 1 cigarette daily for 1 year or more, and alcohol consumption is defined as at least once per week for a period of one month or longer. Notably, the determination of serum sodium and other ions was done by automatic electrolyte analyzer (Shenzhen Kangli AFT—500D), with high accuracy and good precision (the CV value of Na detection was generally 0.60%), which is sufficient to meet the accuracy of this research. Stanford type A aortic dissections involve the ascending aorta whereas Stanford type B dissections involve the descending but not the ascending aorta [11]. The laboratory results were obtained using the patients' first venous blood samples taken on admission to the hospital. The principles and strategies of surgical techniques were determined by experienced surgeons. The outcomes of in-hospital patients with AAD were gathered from medical records. All-cause mortality during hospitalization was defined as the endpoint.

Statistical analysis

According to the quartile of serum sodium concentration on admission, the patients were divided into four groups (quartile 1- quartile 4, Q1- Q4). Continuous variables were expressed as mean \pm SD or median (quartile range). Categorical variables were expressed as the number of patients (%). One-way analysis of variance (ANOVA) test and Kruskal-Wallis H test were used to compare the difference of continuous variables between quartile groups. The chi-squared test or Fisher's exact test was used to compare categorical variables. Proportional hazards assumption (PH) and Schoenfeld residual method were performed to test the availability of Cox proportional risk model. Univariate and multivariate cox proportional hazards model was employed to evaluate the association between serum sodium and in-hospital mortality. We constructed three models: crude model, with no adjustment of covariates; model 1, adjusted for age and gender; and model 2 including other covariates presented in Tables 3 and 4 [12]. Survival curves were constructed using the Kaplan–Meier method estimates and compared with the log-rank test. All the analyses were carried out with SPSS 25.0, two sided *P* values < 0.05 were considered statistically significant.

Result

Baseline characteristics of selected participants

A total of 415 AAD patients were enrolled in the present study based on the inclusion and exclusion criteria (Fig 1). Table 1 shows patient characteristics according to the survival situation at the time of discharge. Among the 415 patients, 61 (14.70%) died after surgery during hospitalization, and 354 (85.30%) survived. The SBP (130.07 ± 23.87 vs. 140.5 ± 28.91 mmHg, $P = 0.008$) and the DBP (75.28 ± 18.00 vs. 81.25 ± 19.39 mmHg, $P = 0.025$) of the non-survivors were lower than the survivors. The percentage of Stanford type A in the non-survivor group was more than that in the survivor group (93.44 vs. 56.78%, $P < 0.001$). The length of the in-hospital stay was significantly shorter in the death group than in the survival group (2 [1, 9] vs. 14 [7, 21] days, $P < 0.001$). AST ($43.20 [24.05, 81.75]$ vs. $29.75 [19.00, 49.80]$ U/L, $P = 0.006$), creatinine ($105.00 [68.00, 141.50]$ vs. $77.50 [62.00, 104.25]$ $\mu\text{mol/L}$, $P = 0.004$), and serum glucose ($7.76 [6.43, 10.37]$ vs. $7.13 [5.98, 8.53]$ mmol/L, $P = 0.009$) levels were significantly higher in the death than in the survival group. α -HBDH ($206.00 [165.80, 298.70]$ vs. $258.30 [173.00, 371.40]$ U/L, $P = 0.029$) was lower in the death than in the survival group. Serum sodium (140 ± 6.55 vs. 138 ± 4.38 mmol/L, $P = 0.006$) and serum chloride ($105.70 [103.00, 110.00]$ vs. $104.00 [101.00, 107.00]$ mmol/L, $P = 0.002$) levels were also higher in the death than in the survival group.

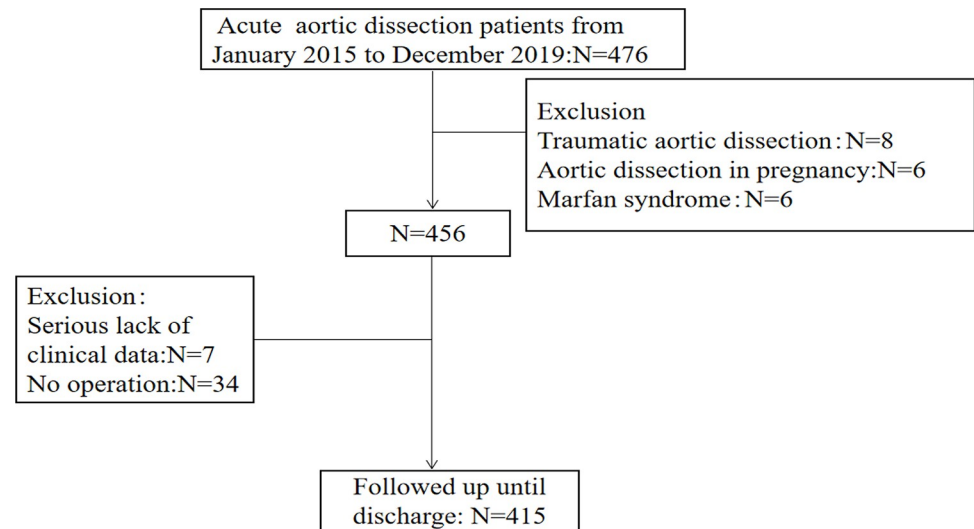


Fig 1. Flow chart of patient enrollment.

<https://doi.org/10.1371/journal.pone.0261168.g001>

Moreover, across all quartiles (Q1: ≤ 136 mmol/L, Q2: 137–138 mmol/L, Q3: 139–140 mmol/L, Q4: ≥ 141 mmol/L), there were statistical differences in years, monocyte count, and serum chloride. Meanwhile, the highest serum sodium quartile group had a higher neutrophil count (Table 2).

Survival curve analysis

To further investigate the relationship between patient survival and serum sodium in AAD, a comparison of Kaplan–Meier curves with the different serum sodium levels was conducted. Fig 2 shows Kaplan–Meier survival curves that proved a decreased short-term survival associated with admission serum sodium in AAD patients (from Q1 to Q4 groups, log-rank test $P = 0.010$).

In-hospital mortality analysis

Next, the in-hospital mortality of AAD patients was further analyzed in accordance with the admission serum sodium quartiles. Fig 3 shows that the significant increase of in-hospital mortality was accompanied by a gradual elevation in serum sodium levels in admitted AAD patients (Q1, 7.02%; Q2, 11.65%; Q3, 18.62%; Q4, 22.92%; $P = 0.006$).

Basing on the Q1 group as a reference, in-hospital mortality risk slightly increased in the Q2 group, however, it was significantly increased by 2.890-fold with Q3 and by 3.253-fold with Q4, respectively.

Following the adjustment for gender and years (model 1), the death risk of the Q3 and Q4 groups was still 2.825-fold (95% CI, 1.228–6.502-fold; $P = 0.015$) and 3.241-fold (95% CI, 1.441–7.290-fold; $P = 0.004$), respectively, while a 1.728-fold elevation in the Q2 group also occurred (95% CI, 0.705–4.233; $P = 0.232$).

More importantly, following the adjustment for gender, age, Stanford type, hypertension, diabetes, coronary artery disease, smoking, drinking, serum glucose, and α -HBDH (model 2), the in-hospital mortality risk was further elevated in Q3 (HR = 3.086, 95% CI, 1.242–7.671; $P = 0.015$) and Q4 (HR = 3.370, 95% CI, 1.384–8.204; $P = 0.007$), respectively, although the

Table 1. Baseline characteristics of patients with AAD.

Variable	Non-survivor (n = 61)	Survivor (n = 354)	P
Years	54.21±12.68	53.01±12.15	0.479
Male(N,%)	39,63.93	266,71.14	0.067
Hypertension(N,%)	46,75.41	258,72.88	0.680
Diabetes(N,%)	2,3.28	6,1.69	0.405
CAD(N,%)	4,6.56	14,3.95	0.357
Smoking(N,%)	27,44.26	190,53.67	0.174
Drinking(N,%)	31,50.82	202,57.06	0.364
Stanford type A(N,%)	57,93.44	201,56.78	<0.001
History of trauma(N,%)	4,6.56	17,4.80	0.564
Surgical history(N,%)	18,29.50	90,25.42	0.502
Heart rate(b.P.m)	79±16.97	80.57±17.60	0.577
SBP(mmHg)	130.07±23.87	140.50±28.91	0.008
DBP(mmHg)	75.28±18.00	81.25±19.39	0.025
length of hospital(day)	2(1,9)	14(7,21)	<0.001
ALT(U/L)	26.70(16.4,43.55)	21.75(15.50,31.88)	0.084
AST(U/L)	43.20(24.05,81.7)	29.75(19.00,49.80)	0.006
Creatinine(μmol/L)	105.00(68.00,141.50)	77.50(62.00,104.25)	0.004
Urea nitrogen(mmol/L)	7.00(5.45,9.25)	6.10(4.70,8.10)	0.060
Serum glucose(mmol/L)	7.76(6.43,10.37)	7.13(5.98,8.53)	0.009
AHB(U/L)	206.00(165.80,298.70)	258.30(173.00,371.40)	0.029
WBC count(10 ⁹ /L)	12.45±4.83	11.74±3.88	0.282
Neutrophil count(10 ⁹ /L)	9.56(7.47,12.57)	9.83(7.46,12.46)	0.570
Lymphocyte count(10 ⁹ /L)	0.87(0.67,1.08)	0.94(0.65,1.33)	0.291
Monocyte count(10 ⁹ /L)	0.66(0.50,0.93)	0.67(0.51,0.92)	0.714
Serum sodium(mmol/L)	140±6.55	138±4.38	0.006
Serum potassium(mmol/L)	4.00(3.35,4.10)	4.00(3.40,4.00)	0.418
Serum chloride(mmol/L)	105.70(103.00,110.00)	104.00(101.00,107.00)	0.002
Serum calcium(mmol/L)	2.14(2.06,2.26)	2.18(2.10,2.28)	0.129

CAD: coronary artery disease; SBP: systolic blood pressure; DBP, diastolic blood pressure; ALT: Alanine transaminase; AST: Aspartate transaminase; α-HBDH: alpha-hydroxybutyric dehydrogenase; WBC: white blood cell.

For numerical raw data, please see [S1 Data](#).

<https://doi.org/10.1371/journal.pone.0261168.t001>

risk in Q2 (HR = 1.718, 95% CI, 0.658–4.486; $P = 0.269$) still is not significantly increased ([Table 3](#)).

Univariate and multiple Cox analysis for in-hospital mortality

In order to verify whether Cox proportional risk model would be available for the short-term survival analysis in AAD patients, proportional hazards assumption (PH) and schoenfeld residual method were performed to test the assumption. We plot the smooth curve residual diagram of Schoenfeld's residual with time, and the results showed no linear correlation between Schoenfeld's residual and time rank ([Fig 4](#)). Moreover, we tested that the correlation between Schoenfeld's residual and time rank, and found that Schoenfeld's residual was independent on time variables (Pearson correlation coefficient, $r = -0.22$, $P = 0.864$). Based on these two results of the smooth curve trend and the Pearson correlation from Schoenfeld's residual analysis, indicating that Cox model is suitable for the short-term survival analysis.

Table 2. Clinical characteristics of patients of serum sodium quartiles.

Variable	Q1(n = 114)	Q2(n = 103)	Q3(n = 102)	Q4(n = 96)
Age(years)*	51.18±12.61	52.50±13.11	56.11±11.93	53.21±10.53
Male(N,%)	83,72.80	79,76.70	75,73.53	68,79.83
Hypertension(N,%)	80,70.18	74,71.84	78,76.47	72,75.00
Diabetes(N,%)	1,0.87	3,2.91	1,0.98	3,3.13
CAD(N,%)	4,3.51	7,6.80	5,4.90	2,2.08
Smoking(N,%)	60,52.63	47,45.63	61,59.80	49,51.04
Drinking(N,%)	62,53.39	57,55.33	59,57.84	55,57.29
Stanford type A	63,55.26	67,65.05	59,57.84	69,71.88
non-survivor **	6,9.52	11,16.42	18,30.51	22,31.88
survivor	57,90.48	56,83.58	42,71.19	47,68.12
History of trauma(N,%)	4,3.51	4,3.88	9,8.82	4,4.17
Surgical history(N,%)	27,23.68	28,27.18	28,27.45	25,26.04
Heart rate(b.p.m)	82.18±15.46	80.03±21.02	79.90±14.94	79.07±18.23
SBP(mmHg)	139.02±26.92	140.65±27.24	138.75±31.60	137.33±28.26
DBP(mmHg)	80.25±17.48	81.94±19.77	80.68±21.22	78.49±18.63
length of in-hospital(day)	13.46±8.62	12.83±8.48	11.54±8.94	13.89±9.73
ALT(U/L)	24.25(15.45,32.53)	19.80(14.00,29.20)	22.60(15.90,31.96)	24.75(16.65,36.00)
AST(U/L)	33.80(19.93,52.80)	28.00(18.30,46.70)	29.25(19.45,49.53)	32.65(20.61,67.55)
Creatinine(μmol/L)	79.50(61.75,110.00)	80.00(63.00,111.00)	72.50(60.75,103.50)	84.50(65.00,122.25)
Urea nitrogen(mmol/L)	6.00(4.30,7.35)	6.80(5.00,8.90)	5.95(4.80,7.70)	6.60(5.40,8.70)
Serum glucose(mmol/L)	7.17(6.13,9.09)	7.11(5.97,9.32)	7.70(5.97,8.11)	7.40(6.32,9.15)
α-HBDH(U/L)	214.90(167.50,302.95)	208.80(160.90,311.90)	197.90(161.95,271.60)	233.85(182.90,328.85)
WBC count(10 ⁹ /L)	11.81±4.19	11.51±3.61	11.47±3.29	12.64±4.86
Neutrophil count(10 ⁹ /L)*	9.93±4.04	9.78±3.57	9.71±3.28	11.35±4.75
Lymphocyte count(10 ⁹ /L)	0.94(0.65,1.28)	0.96(0.67,1.40)	0.62(0.44,0.86)	0.94(0.65,1.23)
Monocyte count(10 ⁹ /L)*	0.70(0.55,0.97)	0.62(0.44,0.86)	0.64(0.51,0.93)	0.75(0.54,1.03)
Serum potassium(mmol/L)	3.90(3.40,4.00)	4.00(3.40,4.00)	4.00(3.40,4.10)	4.00(3.40,4.18)
Serum chloride(mmol/L)*	101.00(97.99,104.00)	105.00(102.00,106.00)	105.85(103.00,109.00)	107.35(104.00,110.00)
Serum calcium(mmol/L)	2.16(2.09,2.24)	2.17(2.10,2.29)	2.20(2.10,2.28)	2.18(2.11,2.29)

*: P < 0.05

**: Stanford type A as subgroup, compared in-hospital mortality in Q1-Q4 groups, P < 0.05. CAD: coronary artery disease; SBP: systolic blood pressure; DBP, diastolic blood pressure; ALT: Alanine transaminase; AST: Aspartate transaminase; α-HBDH: alpha-hydroxybutyric dehydrogenase; WBC: white blood cell.

For numerical raw data, please see [S1 Data](#).<https://doi.org/10.1371/journal.pone.0261168.t002>

Univariate analysis indicated that eight variables, including Stanford type A, SBP, DBP, creatinine, serum glucose, α-HBDH, serum sodium, and serum calcium, were associated with in-hospital mortality with a *P*-value of <0.10 and were put into cox regression (forward LR method) analysis, the results showing that Stanford type A (HR = 3.634, 95% CI, 1.638–8.086; *P* = 0.002), serum glucose (HR = 1.077, 95% CI, 1.025–1.132; *P* = 0.003), α-HBDH (HR = 1.001, 95% CI, 1.001–1.002; *P* < 0.001), and serum sodium (HR = 1.068, 95% CI, 1.029–1.109, *P* = 0.001) were risk factors correlated with in-hospital mortality in AAD patients (Table 4).

Discussion

AAD is a fatal cardiovascular disease [13]. Since the underlying mechanisms of the development and progression of spontaneous AAD cases remain unclear, a screening or prevention

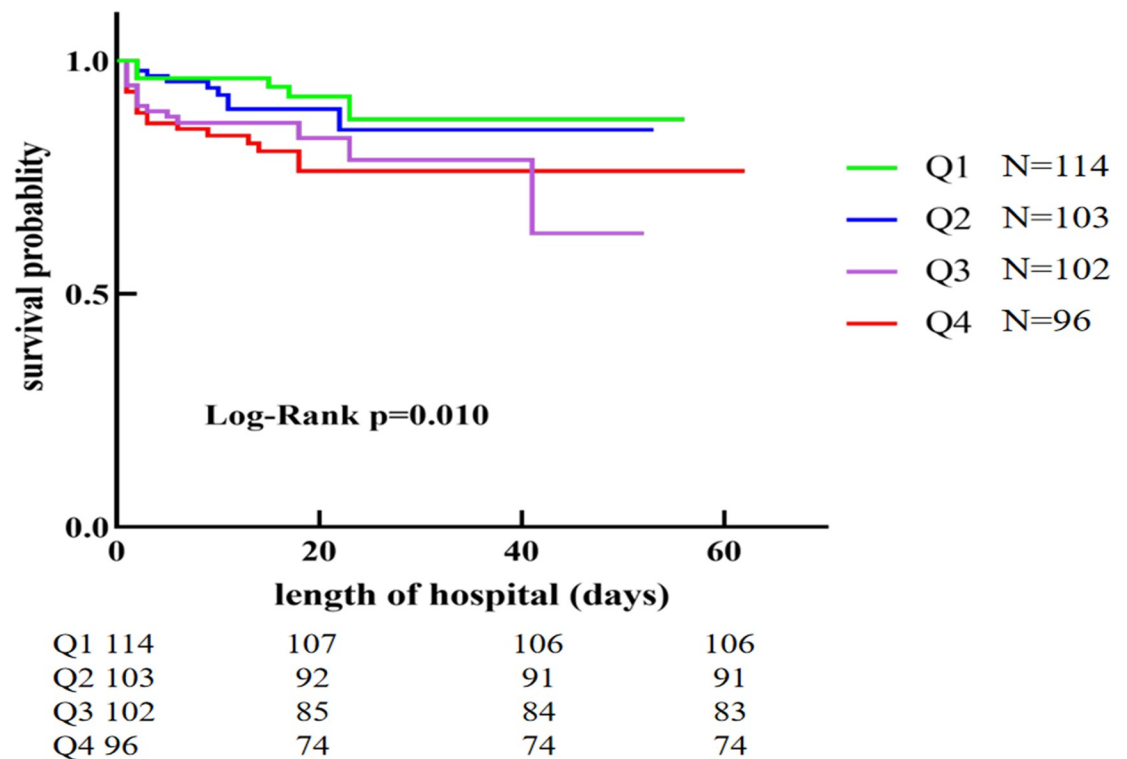


Fig 2. Kaplan-Meier curves for the chronological trend in mortality on serum sodium quartiles groups.

<https://doi.org/10.1371/journal.pone.0261168.g002>

strategy for these patients has yet to be developed [14]. In previous studies, preoperative creatinine, uric acid, serum tenascin-C, and inflammatory factors were all associated with postoperative mortality following AAD [10, 15–17]. Additionally, poor organ perfusion and hemodynamic conditions, such as hypotension, shock, pericardial tamponade, pulse deficiency, and renal failure, further contribute to higher mortality in AAD patients [12]. The present study was the first to evaluate the relationship between serum sodium upon admission and in-hospital mortality of AAD patients, the results showing the increased in-hospital mortality risk in AAD patients with high-sodium levels upon admission. The higher serum sodium levels remained independently associated with in-hospital mortality even when adjusted for gender, years, Stanford type, hypertension, diabetes, coronary artery disease, smoking, drinking, serum glucose, and α -HBDH. Serum sodium ≥ 139 mmol/L will increase the in-hospital mortality risk in AAD patients.

Serum sodium within or above the normal range, as a common consequence of dehydration and high salt consumption [9], has been associated with decreased left ventricular contractility, increased peripheral insulin resistance, and neuromuscular disturbances [18]. High-sodium intake or an excess of aldosterone increases both local and systemic inflammatory reactions, which are T cell- and macrophage-related [19]. It has been suggested that serum sodium may change vascular function. Oberleithner et al. reported that, in cultured human endothelial cells, cell stiffness increased by 20% within minutes of raising the medium sodium concentration from 135 to 145 mmol/L, which is associated with a reduced nitric oxide formation and endothelial nitric oxide synthase activity, suggesting that an altered plasma sodium concentration may affect vascular endothelial function and thus control vascular tone [20]. Dmitrieva NI et al. [21] also showed that the serum sodium can significantly predict a 10-year

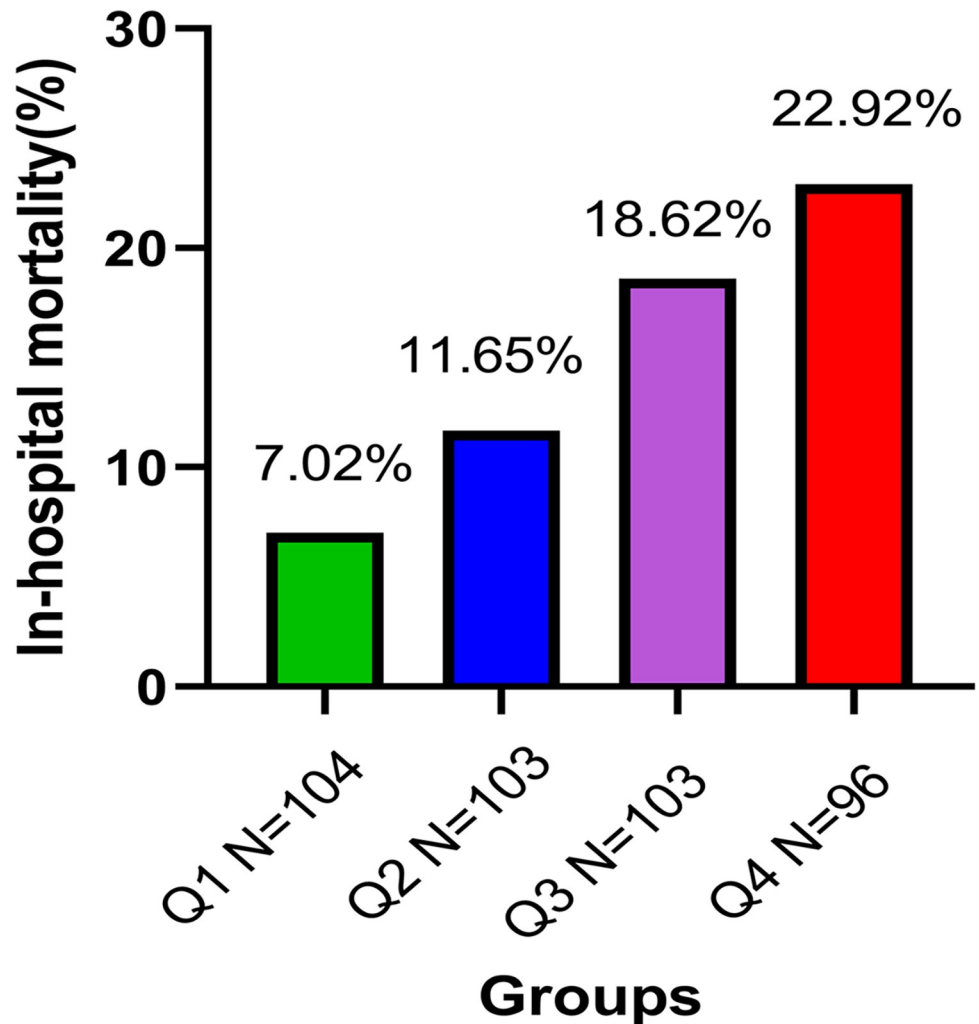


Fig 3. In-hospital mortality stratified by admission serum sodium quartiles.

<https://doi.org/10.1371/journal.pone.0261168.g003>

risk of coronary heart disease and demonstrated that slight elevations of extracellular sodium increase the expression of pro-inflammatory mediators in endothelial cells and their adhesive properties, which is accompanied by vascular biology changes, contributing to the development of cardiovascular diseases. Importantly, Anzai et al. [22] found that the massive neutrophil accumulation in the tunica adventitia of the dissected aorta leads to the onset of aortic

Table 3. Relationship between serum sodium and in-hospital mortality in different models of serum sodium quartiles.

		Q1(n = 114)	Q2(n = 103)	Q3(n = 102)	Q4(n = 96)
in-hospital mortality		8(7.0%)	12(11.7%)	19(18.6%)	22(22.9%)
in-hospital mortality(HR)	Crude model	ref	1.707(0.698–4.178), P = 0.241	2.890(1.264–6.604), P = 0.012	3.253(1.447–7.312), P = 0.004
	Model 1	ref	1.728(0.705–4.233), P = 0.232	2.825(1.228–6.502), P = 0.015	3.241(1.441–7.290), P = 0.004
	Model 2	ref	1.718(0.658–4.486), P = 0.269	3.086(1.242–7.671), P = 0.015	3.370(1.384–8.204), P = 0.007

Model 1: Adjusted for age, gender; Model 2: Adjusted for age, gender, Stanford type, hypertension, diabetes, CAD, smoking, drinking, serum glucose, α -HBDH. For numerical raw data, please see [S1 Data](#).

<https://doi.org/10.1371/journal.pone.0261168.t003>

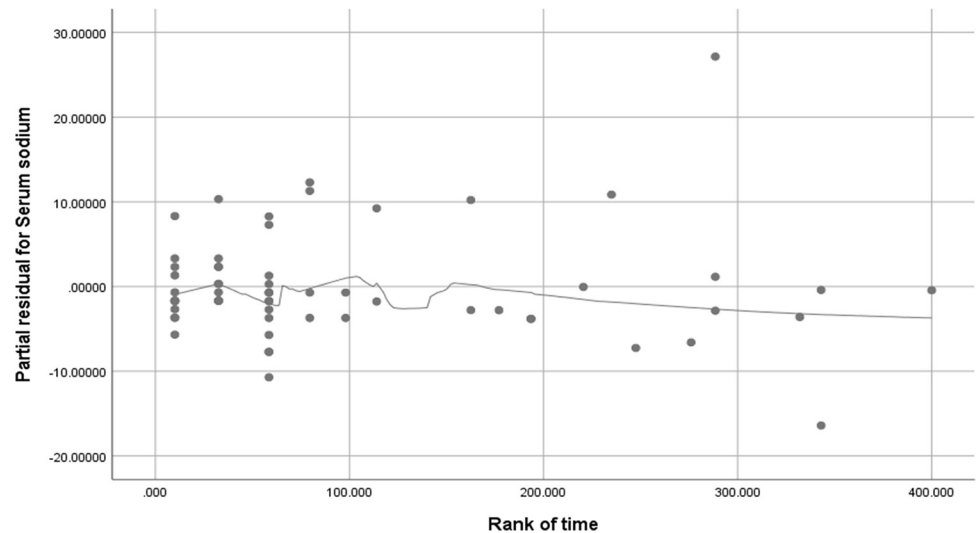


Fig 4. The smooth curve residual diagram of Schoenfeld's residual with time.

<https://doi.org/10.1371/journal.pone.0261168.g004>

dissection as well as subsequent aortic rupture [11]. Consistently, in our study, the neutrophil count in AAD patients with the highest serum sodium level (Q4 group) was significantly greater than that in the other three groups, suggesting that serum sodium may provoke and/or promote the formation and development of AAD through neutrophils, but the specific molecular mechanism needs to be further investigated.

Using the quartile for grouped serum sodium, the postoperative in-hospital mortality of AAD patients was higher in the Q3 (139–140 mmol/L) and Q4 (≥ 140 mmol/L) groups than that in the Q1 (≤ 136 mmol/L) group ($P < 0.05$). Tsipotis et al. [7] found that > 142 mmol/L serum sodium upon admission increased mortality on unselected in-hospital cohort. Similarly, we also found that the elevated serum sodium (≥ 139 mmol/L) can increase the postoperative in-hospital mortality in AAD patients. Thus, for AAD in-patients, it is not appropriate to take corresponding treatment measures only dependent on the standard of hypernatremia; accurately, managing patients with high serum sodium (139–145 mmol/L) is necessary to improve the prognosis of patients.

Acute type A aortic dissection (ATAAD) is a surgical emergency, with a 90% mortality rate in patients who do not receive timely operative intervention. Despite significant advances in imaging, perioperative care, and surgical technique, ATAAD operative mortality rates have remained relatively unchanged between 10% and 30% over the past two decades [23]. Abdelhamed et al. [24] reported an ATAAD early mortality after surgery of 15.4%. Our results also showed that ATAAD patients had higher in-hospital mortality (22.09%, 57/258), and ATAAD patients with increased serum sodium also had a higher early mortality after surgery (Q1, 9.52%; Q2, 16.42%; Q3, 30.51%; Q4, 31.88%), suggesting that serum sodium may be a surgical risk predictor for early mortality after ATAAD.

There were several limitations of the small cohort of patients in our study. First, this study was a single-center study; a multi-center study is needed in the future to demonstrate serum sodium levels independently associated with in-hospital mortality of AAD patients. Second, the long-term studies for the effect of serum sodium on in-hospital mortality in AAD patients are necessary to better assess and prevent the formation and progress of AAD. Additionally, due to the deaths occurred quickly before or after admission, AAD patients' serum sodium value and other relevant data could not be collected immediately, where 6 hours is the shortest

Table 4. Univariate and multiple Cox analysis for in-hospital mortality of serum sodium quartiles groups.

	Univariate			Multivariate		
	HR	95%CI	P	HR	95%CI	P
years	1.014	0.994–1.034	0.171			
male	0.678	0.414–1.111	0.123			
Hypertension	1.312	0.684–2.152	0.509			
Diabetes	1.004	0.246–4.101	0.995			
CAD	1.430	0.617–3.317	0.404			
Smoking	0.768	0.474–1.243	0.282			
Drinking	0.873	9,543–1.405	0.576			
Stanford type A	4.503	2.048–9.899	<0.001	3.634	1.638–8.060	0.002
History of trauma	1.485	0.540–4.081	0.443			
Surgical history	1.127	0.663–1.914	0.659			
Heart rate	0.998	0.984–1.012	0.770			
SBP	0.987	0.978–0.995	0.002			
DBP	0.986	0.973–0.999	0.032			
ALT	1.000	0.999–1.001	0.814			
AST	1.000	1.000–1.000	0.996			
Creatinine	1.002	1.000–1.003	0.044			
Urea nitrogen	1.028	0.994–1.063	0.106			
Serum glucose	1.067	1.018–1.117	0.007	1.077	1.025–1.132	0.003
α -HBDH	1.001	1.001–1.002	<0.001	1.001	1.001–1.002	<0.001
WBC count	1.029	0.973–1.088	0.312			
Neutrophil count	1.032	0.975–1.093	0.274			
lymphocyte count	0.754	0.462–1.228	0.256			
Monocyte count	1.405	0.738–2.675	0.300			
Serum sodium	1.074	1.035–1.116	<0.001	1.068	1.029–1.109	0.001
Serum potassium	0.999	0.983–1.015	0.889			
Serum chloride	1.011	0.989–1.033	0.344			
Serum calcium	0.255	0.073–0.899	0.034			

CAD: coronary artery disease; SBP: systolic blood pressure; DBP, diastolic blood pressure; ALT: Alanine transaminase; AST: Aspartate transaminase; α -HBDH: alpha-hydroxybutyric dehydrogenase; WBC: white blood cell.

For numerical raw data, please see [S1 Data](#).

<https://doi.org/10.1371/journal.pone.0261168.t004>

operation interval after admission in our hospital, therefore, some patients who died before surgery were not involved in this study, and these defect data may affect the results of the study.

Conclusions

Our data indicated that the admission serum sodium would be a potential predictive risk factor for postoperative hospital death of AAD patients. More attention must be paid to high admission serum sodium level in clinic.

Supporting information

S1 Data. All numerical raw data are combined in this single excel file. This file consists of several spreadsheets. Each spreadsheet contains the raw data of one table or one subfigure. (XLSX)

Acknowledgments

We thank Yong-bo Zhao and Xiao Liu doctors from the Cardiac Surgery Department, the Forth Hospital of Hebei Medical University supporting our data collection work.

Author Contributions

Conceptualization: Dong Ma.

Data curation: Pengfei Huang, Dong Ma, Yongbo Zhao, Xiao Liu, Peng Su, Jinjin Zhang, Shuo Ma, Zhe Pan, Juexin Shi, Fangfang Hou, Nana Zhang, Xiaohui Zheng, Nan Liu, Ling Zhang.

Formal analysis: Pengfei Huang, Hongyan Wang, Dong Ma.

Funding acquisition: Dong Ma.

Investigation: Hongyan Wang, Dong Ma, Yongbo Zhao.

Methodology: Hongyan Wang, Dong Ma.

Resources: Dong Ma.

Supervision: Pengfei Huang.

Validation: Pengfei Huang.

Visualization: Pengfei Huang.

Writing – original draft: Hongyan Wang, Dong Ma.

Writing – review & editing: Hongyan Wang, Dong Ma.

References

1. LeMaire SA, Russell L. Epidemiology of thoracic aortic dissection. *Nat Rev Cardiol*. 2011; 8(2):103–13. Epub 2010/12/22. <https://doi.org/10.1038/nrcardio.2010.187> PMID: 21173794.
2. Golledge J, Eagle KA. Acute aortic dissection. *Lancet*. 2008; 372(9632):55–66. Epub 2008/07/08. [https://doi.org/10.1016/S0140-6736\(08\)60994-0](https://doi.org/10.1016/S0140-6736(08)60994-0) PMID: 18603160.
3. Arampatzis S, Frauchiger B, Fiedler GM, Leichte AB, Buhl D, Schwarz C, et al. Characteristics, symptoms, and outcome of severe dysnatremias present on hospital admission. *Am J Med*. 2012; 125(11):1125.e1–e7. Epub 2012/09/04. <https://doi.org/10.1016/j.amjmed.2012.04.041> PMID: 22939097.
4. Vedantam A, Robertson CS, Gopinath SP. Morbidity and mortality associated with hypernatremia in patients with severe traumatic brain injury. *Neurosurg Focus*. 2017; 43(5):E2. Epub 2017/11/02. <https://doi.org/10.3171/2017.7.FOCUS17418> PMID: 29088954.
5. Beseoglu K, Etrinan N, Steiger HJ, Hanggi D. The relation of early hypernatremia with clinical outcome in patients suffering from aneurysmal subarachnoid hemorrhage. *Clin Neurol Neurosurg*. 2014; 123:164–8. Epub 2014/06/24. <https://doi.org/10.1016/j.clineuro.2014.05.022> PMID: 24956546.
6. Aiyagari V, Deibert E, Diringer MN. Hypernatremia in the neurologic intensive care unit: how high is too high? *J Crit Care*. 2006; 21(2):163–72. Epub 2006/06/14. <https://doi.org/10.1016/j.jcrc.2005.10.002> PMID: 16769461.
7. Tsiptis E, Price LL, Jaber BL, Madias NE. Hospital-Associated Hypernatremia Spectrum and Clinical Outcomes in an Unselected Cohort. *Am J Med*. 2018; 131(1):72–82 e1. Epub 2017/09/02. <https://doi.org/10.1016/j.amjmed.2017.08.011> PMID: 28860033.
8. Oh S, Baek S, An J, Goo H, Kim S, Na K, et al. Small increases in plasma sodium are associated with higher risk of mortality in a healthy population. *J Korean Med Sci*. 2013; 28(7):1034–40. <https://doi.org/10.3346/jkms.2013.28.7.1034> PMID: 23853486.
9. Suckling RJ, He FJ, Markandu ND, MacGregor GA. Dietary salt influences postprandial plasma sodium concentration and systolic blood pressure. *Kidney Int*. 2012; 81(4):407–11. Epub 2011/11/04. <https://doi.org/10.1038/ki.2011.369> PMID: 22048126.

10. Zhang Y, Xu X, Lu Y, Guo L, Ma L. Preoperative uric acid predicts in-hospital death in patients with acute type a aortic dissection. *J Cardiothorac Surg.* 2020; 15(1):21. Epub 2020/01/17. <https://doi.org/10.1186/s13019-020-1066-9> PMID: 31941543; PubMed Central PMCID: PMC6964024.
11. Nienaber CA, Clough RE, Sakalihasan N, Suzuki T, Gibbs R, Mussa F, et al. Aortic dissection. *Nat Rev Dis Primers.* 2016; 2:16053. Epub 2016/07/22. <https://doi.org/10.1038/nrdp.2016.53> PMID: 27440162.
12. He H, Chai X, Zhou Y, Pan X, Yang G. Association of Lactate Dehydrogenase with In-Hospital Mortality in Patients with Acute Aortic Dissection: A Retrospective Observational Study. *Int J Hypertens.* 2020; 2020:1347165. <https://doi.org/10.1155/2020/1347165> PMID: 31969993.
13. Gawinecka J, Schonrath F, von Eckardstein A. Acute aortic dissection: pathogenesis, risk factors and diagnosis. *Swiss Med Wkly.* 2017; 147:w14489. Epub 2017/09/06. <https://doi.org/10.4414/smw.2017.14489> PMID: 28871571; PubMed Central PMCID: PMC28871571.
14. Liu X, Zheng X, Su X, Tian W, Hu Y, Zhang Z. Plasma Resistin Levels in Patients with Acute Aortic Dissection: A Propensity Score-Matched Observational Case-Control Study. *Med Sci Monit.* 2018; 24:6431–7. Epub 2018/09/14. <https://doi.org/10.12659/MSM.909469> PMID: 30212440; PubMed Central PMCID: PMC6149239.
15. Wu ZN, Guan XL, Xu SJ, Wang XL, Li HY, Gong M, et al. Does preoperative serum creatinine affect the early surgical outcomes of acute Stanford type A aortic dissection? *J Chin Med Assoc.* 2020; 83(3):266–71. Epub 2020/01/29. <https://doi.org/10.1097/JCMA.000000000000264> PMID: 31990819.
16. Guo T, Zhou X, Zhu A, Peng W, Zhong Y, Chai X. The Role of Serum Tenascin-C in Predicting In-Hospital Death in Acute Aortic Dissection. *Int Heart J.* 2019; 60(4):919–23. Epub 2019/07/02. <https://doi.org/10.1536/ihj.18-462> PMID: 31257330.
17. Itagaki R, Kimura N, Mieno M, Hori D, Itoh S, Akiyoshi K, et al. Characteristics and Treatment Outcomes of Acute Type A Aortic Dissection With Elevated D-Dimer Concentration. *J Am Heart Assoc.* 2018; 7(14). Epub 2018/07/11. <https://doi.org/10.1161/JAHA.118.009144> PMID: 29987123; PubMed Central PMCID: PMC6064831.
18. Breen T, Brueske B, Sidhu M, Murphree D, Kashani K, Barsness G, et al. Abnormal Serum Sodium is Associated With Increased Mortality Among Unselected Cardiac Intensive Care Unit Patients. *J Am Heart Assoc.* 2020; 9(2):e014140. <https://doi.org/10.1161/JAHA.119.014140> PMID: 31914877.
19. Armanini D, Andrisani A, Donà G, Bordin L, Ambrosini G, Sabbadin C. Hypothesis on a relationship between hyperaldosteronism, inflammation, somatic mutations, and autoimmunity. *J Clin Hypertens (Greenwich).* 2017; 19(11):1060–2. Epub 2017/08/24. <https://doi.org/10.1111/jch.13074> PMID: 28834202.
20. Oberleithner H, Riethmüller C, Schillers H, MacGregor GA, de Wardener HE, Hausberg M. Plasma sodium stiffens vascular endothelium and reduces nitric oxide release. *Proc Natl Acad Sci U S A.* 2007; 104(41):16281–6. Epub 2007/10/04. <https://doi.org/10.1073/pnas.0707791104> PMID: 17911245; PubMed Central PMCID: PMC1999397.
21. Dmitrieva N, Burg M. Elevated sodium and dehydration stimulate inflammatory signaling in endothelial cells and promote atherosclerosis. *PLoS One.* 2015; 10(6):e0128870. <https://doi.org/10.1371/journal.pone.0128870> PMID: 26042828.
22. Anzai A, Shimoda M, Endo J, Kohno T, Katsumata Y, Matsuhashi T, et al. Adventitial CXCL1/G-CSF expression in response to acute aortic dissection triggers local neutrophil recruitment and activation leading to aortic rupture. *Circ Res.* 2015; 116(4):612–23. Epub 2015/01/08. <https://doi.org/10.1161/CIRCRESAHA.116.304918> PMID: 25563839.
23. Sabe AA, Percy E, Kaneko T, Plichta RP, Hughes GC. When to Consider Deferral of Surgery in Acute Type A Aortic Dissection: A Review. *Ann Thorac Surg.* 2020. Epub 2020/09/04. <https://doi.org/10.1016/j.athoracsur.2020.08.002> PubMed Central PMCID: PMC7457910. PMID: 32882193
24. Abdelhameed AS, Xin F, Wei X. Early Mortality in Patients who Received Extensive Surgical Management for Acute Type A Aortic Dissection—Analysis of 452 Consecutive Cases from a Single-center Experience. *Braz J Cardiovasc Surg.* 2020; 35(4):521–9. Epub 2020/09/01. <https://doi.org/10.21470/1678-9741-2019-0258> PMID: 32864933; PubMed Central PMCID: PMC7454641.