



Correction

Article title: Pathogenic role of BECN1/Beclin 1 in the development of amyotrophic lateral sclerosis.

Authors: Nassif M, Valenzuela V, Rojas-Rivera D, Vidal R, Matus S, Castillo K, Fuentealba Y, Kroemer G, Levine B, Hetz C.

Journal: *Autophagy*

Bibliometrics: Volume 10, Issue 7, Pages 1256-1271

DOI: 10.4161/aut0.28784

There was an inadvertent mistake in Figures 7B and 7C by selecting incorrect input bands in SOD1^{G93A} and SOD1^{G85R} immunoprecipitations. These errors were caused during the western blot image preparation when reformatting our manuscript and do not alter the conclusions of the particular experiment. We apologize for this error, and here

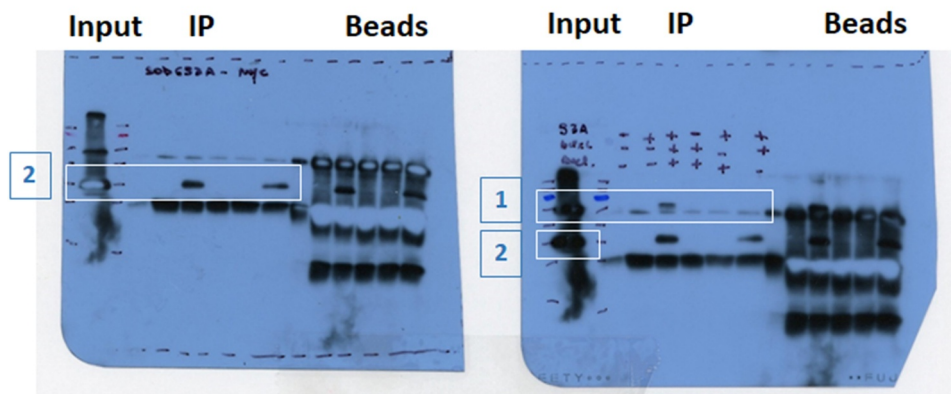
we provide the original films as follows: Items 1 and 2 refer to Figure 7B, with the raw films. Red boxes show the incorrect bands. White rectangles show the proteins of interest. The original blots revealed that in the SOD1^{G93A} mutant, the correct band for the anti-BECN1 blot (Figure 1, number 1, first lane) and the band for anti-BCL2L1 (item 1, number 2, first lane) are different (we included a lower exposure also of the image to the right). Items 3 and 4, are refer to the original Figure 7C, with a similar correction.

Figures 7B and C should be corrected as shown, and these corrections do not change the description, interpretation, or the original conclusions of the manuscript. The authors apologize for any confusion this may have caused.

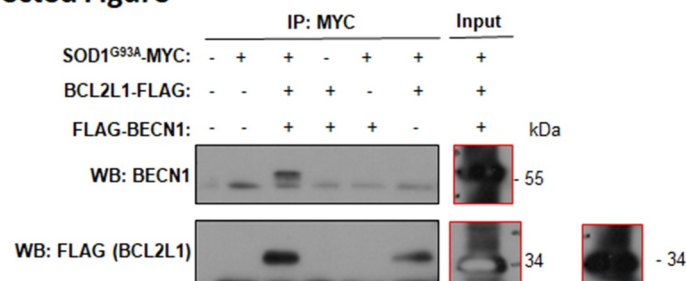
1- Figure 7B, Raw Data

1: BECN1

2: BCL2L1/BCL_{xl}



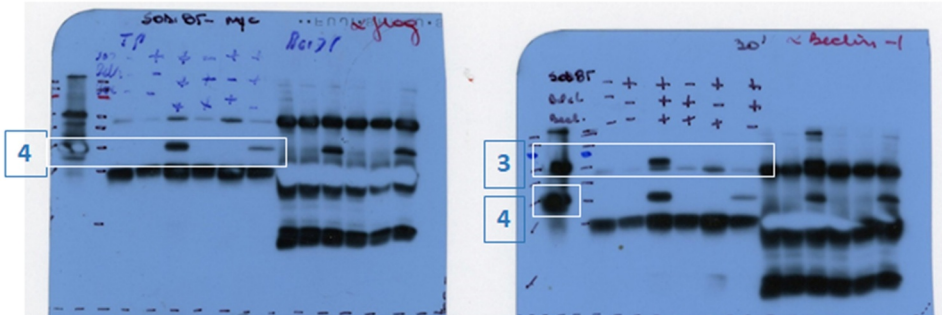
2- Corrected Figure



3- Figure 7C, Raw Data

3: BECN1

4: BCL2L1/BCL_{xl}



4- Corrected Figure

