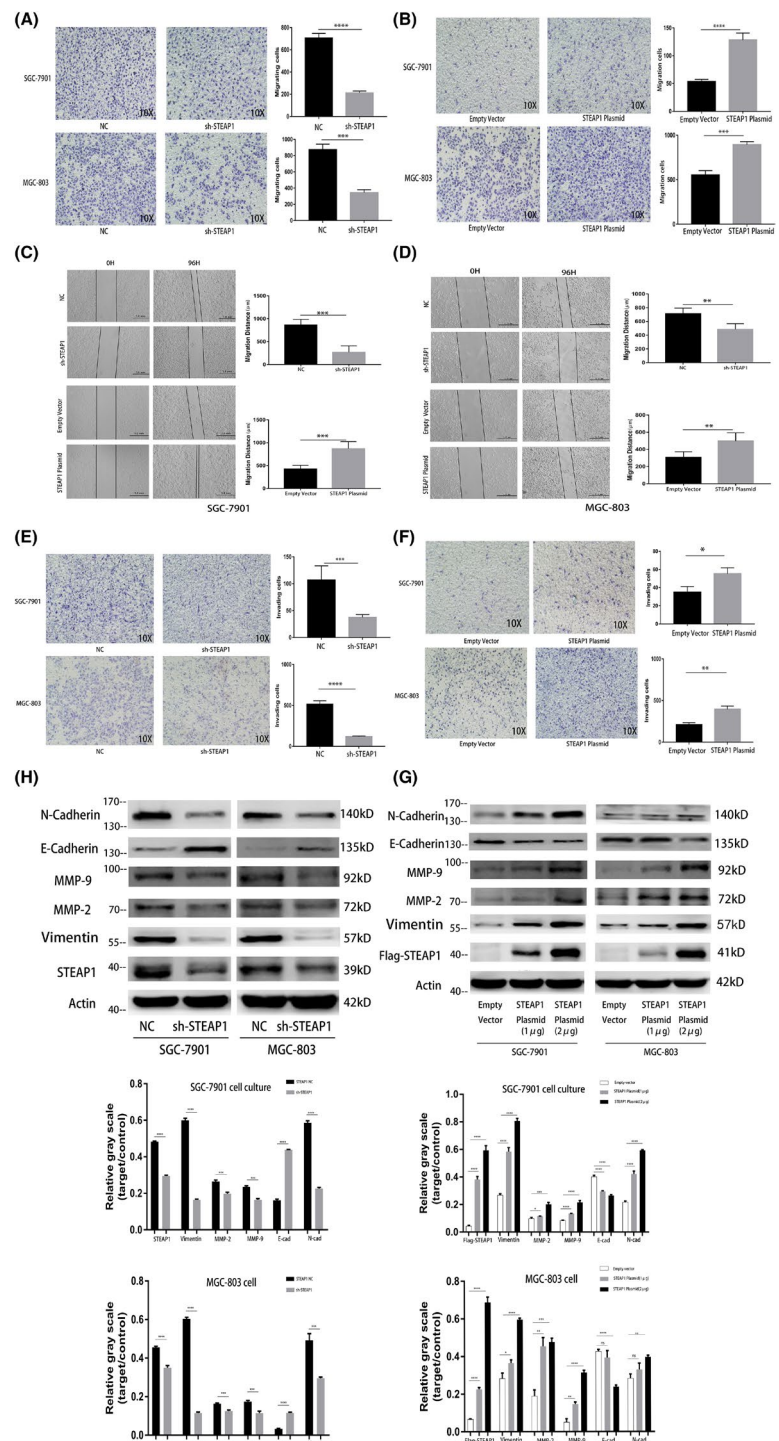


CORRIGENDUM

In Zhe Zhang et al,¹ the image for STEAP1 Plasmid/SGC-7901 in Figure 3F overlapped with Figure 3E due to technical error during image preparation. The correct figure is shown below. The authors confirm all results and conclusions of this article remain unchanged.

FIGURE 3 Functional experiments related to cell migration and invasion in the SGC-7901 and MGC-803 cell lines. (A) Detection of cell migration differences before and after knocking down STEAP1 in the SGC-7901 and MGC-803 cell lines using transwell assay. (B) Detection of cell migration differences before and after the overexpression of STEAP1 in the SGC-7901 and MGC-803 cell lines using transwell assay. (C) Detection of cell migration differences before and after knocking down STEAP1 in the SGC-7901 and MGC-803 cell lines using wound healing assay. (D) Detection of cell migration differences before and after the overexpression of STEAP1 in the SGC-7901 and MGC-803 cell lines using wound healing assay. (E) Detection of cell invasion differences before and after knocking down STEAP1 in the SGC-7901 and MGC-803 cell lines using transwell assay. (F) Detection of cell invasion differences before and after the overexpression of STEAP1 in the SGC-7901 and MGC-803 cell lines using transwell assay. (G) Western blot analysis detected the difference in protein expression related to cell migration, invasion and EMT before and after knocking down STEAP1 in the SGC-7901 and MGC-803 cell lines. (H) Western blot analysis detected the difference in protein expression related to cell migration, invasion and EMT before and after the overexpression of STEAP1 in the SGC-7901 and MGC-803 cell lines (* $p < 0.05$, ** $p < 0.01$, *** $p < 0.001$, **** $p < 0.0001$)



This is an open access article under the terms of the Creative Commons Attribution License, which permits use, distribution and reproduction in any medium, provided the original work is properly cited.

© 2021 The Authors. *Journal of Cellular and Molecular Medicine* published by Foundation for Cellular and Molecular Medicine and John Wiley & Sons Ltd.

REFERENCE

1. Zhang Z, Hou WB, Zhang C, et al. A research of STEAP1 regulated gastric cancer cell proliferation, migration and invasion in vitro and in vivo. *J Cell Mol Med*. 2020;24:14217-14230. doi:10.1111/jcmm.16038