



# Mapping of Modifiable Factors with Interdisciplinary Chronic Obstructive Pulmonary Disease (COPD) Guidelines Adherence to the Theoretical Domains Framework: A Systematic Review

Hancy Issac <sup>1,2</sup>  
Clint Moloney<sup>1,3,4</sup>  
Melissa Taylor <sup>1,2</sup>  
Jackie Lea<sup>1,2</sup>

<sup>1</sup>School of Nursing and Midwifery, University of Southern Queensland, Toowoomba, Australia; <sup>2</sup>Centre for Health Research, University of Southern Queensland, Toowoomba, Australia; <sup>3</sup>College of Health and Biomedicine, Nursing and Midwifery, Victoria University, Melbourne, Australia; <sup>4</sup>Clinical Community Health and Wellbeing, Research Institute for Health and Sport, Victoria University, Melbourne, Australia

**Background:** COPD guidelines non-concordance is a challenge frequently highlighted by respiratory experts. Despite the provision of comprehensive evidence-based national and international guidelines, the COPD burden to frontline healthcare services has increased in the last decade. Suboptimal guidelines concordance can be disruptive to health-related quality of life (HRQoL), hastening pulmonary function decline and surging overall morbidity and mortality. A lack of concordance with guidelines has created an escalating economic burden on health-care systems. Identifying interdisciplinary interventions to facilitate improved adherence to guidelines may significantly reduce re-admissions, enhance HRQoL amongst patients and their families, and facilitate economic efficiency.

**Materials and Methods:** This review adhered to the Joanna Briggs Institute (JBI) methodology for mixed methods systematic reviews and the PRISMA ScR reporting guidelines. Two independent reviewers screened abstracts and full text articles in consonance with inclusion criteria. The convergent integrative JBI method collated quantitative, qualitative and mixed methods studies from nine databases. JBI critical appraisal tools were utilised to assess the quality of research papers. The theoretical domains framework (TDF) along with a specifically developed COPD data extraction tool were adopted as a priori to collect and collate data. Identified barriers and corresponding clinical behavioural change solutions were categorised using TDF domains and behavior change wheel (BCW) to provide future research and implementation recommendations.

**Results:** Searches returned 1068 studies from which 37 studies were included (see [Figure 1](#)). COPD recommendations identified to be discordant with clinical practice included initiating non-invasive ventilation, over- or under-prescription of corticosteroids and antibiotics, and a lack of discharging patients with a smoking cessation plan or pulmonary rehabilitation. TDF domains with highest frequency scores were knowledge, environmental resources, and clinical behaviour regulation. Electronic order sets/digital proforma with guideline resources at point of care and easily accessible digital community referrals to target both pharmacological and non-pharmacological management appear to be a solution to improve concordance.

**Conclusion:** Implementation of consistent quality improvement intervention within hospitals for patients with COPD may exclude any implementation gap and prevent readmissions. Electronic proformas with digital referrals will assist with future evaluation audits to prioritise and target interventions to improve guidelines concordance.

**Ethics and Dissemination:** Ethical approval is not required, and results dissemination will occur through peer-reviewed publication.

**PROSPERO Registration Number:** CRD42020156267.

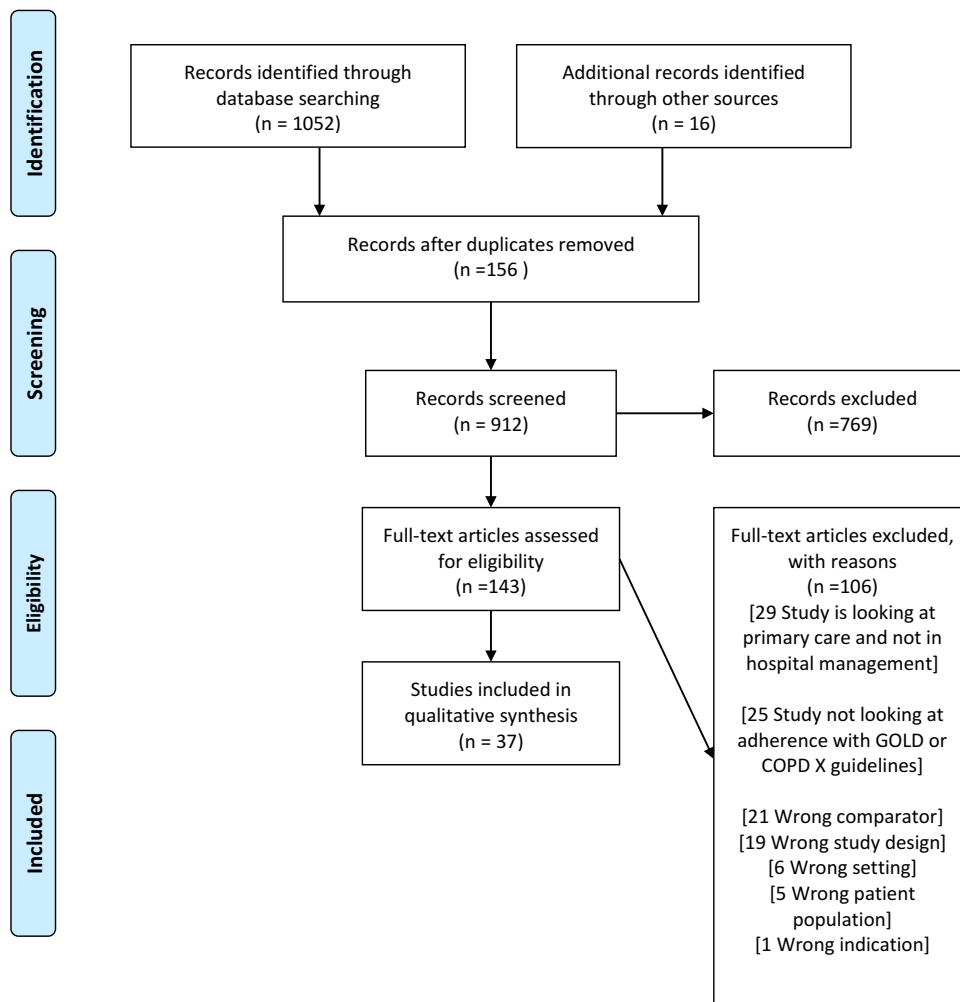
Correspondence: Hancy Issac  
W562, School of Nursing and Midwifery,  
University of Southern Queensland,  
Toowoomba, Queensland, Australia  
Tel +61 7 4631 2269  
Email hancy.issac@usq.edu.au

**Keywords:** COPD guidelines, chronic obstructive pulmonary disease guidelines, concordance, compliance, adherence, GOLD, COPD-X

## Introduction

Chronic obstructive pulmonary disease (COPD) is a progressive life-threatening lung disease identified as a major global healthcare burden.<sup>1</sup> According to the World Health Organization, COPD caused 3.23 million deaths in 2019 equating to 6% of overall deaths, with over 80% of those occurring in low- and middle-income countries.<sup>2</sup> The Australian National Morbidity Database reveals that in 2017–2018, there were 77,660 hospitalisations of people over 45, with the rate of hospitalisation at 732 per 100,000 population.<sup>3</sup> In Australia, 7.5% of people  $\geq 40$  years old have stage II or above COPD as classified by the Global

Initiative for Obstructive Lung Disease (GOLD) criteria and 30% in the  $>75$ -years age group.<sup>3,4</sup> COPD is the fifth leading cause of death in Australia and second avoidable cause of hospitalisation.<sup>3,4</sup> Worldwide, COPD related mortality ranks high amongst developed countries with the United States at 8th, United Kingdom at 12th and Australia at 34th.<sup>5</sup> Patients with COPD and their families experience a considerable financial burden due to functional decline in the workplace and at home. COPD prevalence, morbidity, and mortality is highly reported from high-income countries albeit 90% mortality occurs in low and middle-income countries.<sup>6</sup> In an Australian context in



**Figure 1** Preferred reporting items for systematic reviews and meta-analyses: the PRISMA statement.

**Notes:** PRISMA figure adapted from Moher D, Liberati A, Altman D, Tetzlaff J et al. The PRISMA statement for reporting systematic reviews and meta-analyses of studies that evaluate health care interventions: explanation and elaboration. *Journal of clinical epidemiology*. 2009;62(10). Creative Commons.<sup>68</sup>

2015–2016, the treatment of patients with COPD was estimated to reach \$976.9 million, which was 24% of total expenditure for all respiratory conditions.<sup>6</sup> Globally, COPD is predicted to increase its economic burden by US \$2.3 trillion by 2030.<sup>1</sup> Varied COPD treatment and effective long-term preventative management strategies are however known to decrease the number of acute exacerbations, improve health-related quality of life outcomes, and sustain pulmonary function.<sup>7</sup>

National guidelines in Australia (COPD-X plan) and international guidelines (Global Initiative for Chronic Obstructive Lung Disease [GOLD]) continue to highlight the significance of non-pharmacological interventions to improve HrQoL, prevent readmissions and acute exacerbations.<sup>8,9</sup> COPD guidelines non-adherence in both pharmacological and non-pharmacological management is well-recognised and is a reported phenomenon in national and international literature.<sup>10–12</sup> A COCHRANE systematic review on integrated disease management programs for COPD reported improved disease-related quality of life, increased exercise capacity, reduced hospital admissions and hospital days per person.<sup>13</sup> Sub-optimal dissemination and implementation impede adoption into clinical practice by interdisciplinary health professionals.<sup>14,15</sup> Guidelines assist with the incorporation of evidence into clinical practice to improve patient outcomes.<sup>16,17</sup> However, worldwide research reports lack of COPD guideline adherence.<sup>11,18–22</sup> Implications of guidelines non concordance are repetitive readmissions with COPD exacerbations, increased economic burden, and poor optimisation of lung function and overall health.<sup>12,23,24</sup>

This systematic review set out to identify known contributing factors towards COPD guidelines non-adherence from the time of admission to hospital to time of discharge. Given the scarcity of research on interdisciplinary guidelines concordance with the population of patients with COPD, the review included a mixed methods approach that enabled all available evidence to be incorporated into the review. The Theoretical Domains Framework (TDF) assists in helping to identify factors that influence a behavior. The TDF framework is used by researchers to identify factors; interventions were filtered and targeted towards interdisciplinary implementation with specific recommendations for local, national, and international health systems.<sup>25–27</sup> The Theoretical Domains Framework collation of data allowed robust filtration of evidence from multiple sources to provide improved implementation

strategies and clinical behaviour change solutions utilising behavior change wheel taxonomy to augment COPD guidelines concordance.<sup>25,27</sup> Identified barriers, facilitators and corresponding clinical behavioral change solutions utilising a behavior change wheel are categorised towards 14 TDF domains.<sup>25,26</sup> These include knowledge, skills, social/professional role identity, beliefs about capabilities, beliefs about consequences, memory attention and decision processes, environmental context and resources, intentions, goals, social influences, optimism, emotion, behavior regulation. [Table 1](#) includes TDF domains and frequency scores with barriers and potential solutions from included studies (see [Table 1](#)). We hypothesised notable discordance in adherence to COPD guidelines and asserted that compiling modifiable factors and implementation strategies may improve awareness, increase adherence, and assist stakeholders to adopt implementation strategies to improve patient outcomes.

## Methods

This review adheres to the Joanna Briggs Institute Methodology for Mixed Methods Systematic Reviews and the Preferred Reporting Items for Systematic Reviews and Meta-Analyses extension for Scoping Reviews Reporting Guidelines. The protocol for this study was published and registered in PROSPERO which elaborates on objective, search strategy, eligibility criteria, study selection, data collection, transformation and synthesis.<sup>14</sup> The mixed methods review provides a comprehensive synthesis compared with a single-method review as it combines quantitative and qualitative evidence to assist clinical decision-makers and policymakers to adopt an appropriate implementation strategy.<sup>28</sup> A convergent integrative method where quantitative evidence was qualitated to provide a narrative review is included to enable the integration of all studies and the ability to attain a deepened understanding of any discrepancies noted in the evidence (see [Figure 2](#)).<sup>28</sup> The 14 TDF domains and BCW taxonomy have guided the process for developing interventions specifically targeting identified barriers in three behavior change conditions: capability, opportunity, and motivation (referred to as the COM-B system).<sup>25</sup> Identified TDF domains causing non-adherence to guidelines were mapped to the capability (C), opportunity (O), and motivation (M) components, which form the behavior change wheel with nine intervention functions (education, persuasion, incentivisation, coercion,

**Table 1** TDF<sup>a</sup> Domains and Frequency Scores with Barriers and Potential Solutions from Included Studies

Discordant Clinical Practice	TDF <sup>a</sup> Domain	COPD <sup>a</sup> Guidelines Uptake Barrier	COM-B <sup>a</sup> Components	BCW <sup>a</sup> /Study Recommendations	Solutions/Future Research Recommendations	Frequency Scores /37
<p>Non-adherence to oxygen guideline administration<sup>35</sup></p> <p>Lack of updated COPD<sup>a</sup> GOLD<sup>a</sup> guidelines utilisation or management in reference to publishing years<sup>30</sup></p> <p>Prescription of inhaled corticoid steroids (ICS)<sup>a</sup> discordant to guidelines (dosage and duration)<sup>18</sup></p> <p>Lack of palliative care referrals<sup>61</sup></p> <p>Delayed switch to oral treatment with steroids<sup>42</sup></p> <p>Lack of inhaler technique checks with COPD<sup>a</sup> exacerbations<sup>46</sup></p> <p>Inappropriate antibiotic prescription<sup>44</sup></p> <p>Variations in the management of acute exacerbations of chronic obstructive pulmonary disease<sup>47</sup></p> <p>High flow oxygen initiated in ambulances continued in ED in spite of down titration<sup>32</sup></p>	<b>Knowledge</b>	<p>Lack of understanding of the effects, role and dangers of oxygen therapy<sup>25</sup></p> <p>Lack of familiarity of COPD<sup>a</sup> guidelines<sup>23,53</sup></p> <p>Lack of knowledge on updated guideline with publishing years<sup>30</sup></p> <p>Difficulty prognosticating in palliative care COPD<sup>a</sup> due to the variable disease trajectory<sup>61</sup></p> <p>Lack of awareness of the consequences of poorly controlled disease<sup>46</sup></p> <p>Care gaps between general internists, respiratory physicians and hospitals<sup>47</sup></p> <p>Lack of knowledge of spirometry interpretation<sup>23,32,53</sup></p>	<b>Capability (psychological, Physical)</b>	<p><b>Training, modeling, enablement</b></p> <p>Education and other interventions to enhance self-learning among physicians<sup>12,38</sup></p> <p>Introduction of hospital guidelines<sup>21</sup></p> <p>Implementation and education of updated guideline versions in clinical practice<sup>30</sup></p> <p>Educate clinicians of the indications and contraindications for ICS<sup>a</sup> and encourage to prescribe according to the guidelines<sup>36</sup></p> <p>Education of professionals involved in the care of COPD<sup>a</sup> patients may reduce the risk of complications of hypercapnia<sup>52</sup></p>	<p>Electronic care order set and prescribing at point of care<sup>10-12,18,20,47,52</sup></p> <p>Informational posters<sup>12</sup></p> <p>Training all nurses, pharmacists and allied health to share responsibility in inhaler device and technique education<sup>49,58</sup></p> <p>Clinical bundles/pathways to standardise care particularly with pharmacological management<sup>18,20,29,33,34,65</sup></p> <p>Targeted health professional education for each discipline<sup>58</sup></p> <p>Interactive educational tools, specific cue cards in clinical practice and presence of hospital clinical champions<sup>38</sup></p>	28/37
<p>Lack of inhaler technique checks with COPD<sup>a</sup> exacerbation<sup>49</sup></p> <p>Inhaler device specific guidance appears to be lacking<sup>34</sup></p> <p>Lacking skills to teach device specific inhaler technique<sup>28</sup></p> <p>Lack of previous experience with NIV<sup>a</sup> initiation<sup>11,52</sup></p>	<b>Skills</b>	<p>Lack of clear and specific guidance regarding inhalation devices in current COPD<sup>a</sup> guidelines</p> <p>Lack of staff education on NIV<sup>a</sup>,<sup>29</sup></p>	<b>Capability (physical)</b>	<p><b>Training, Modeling</b></p> <p>The development and validation of appropriate educational tools for inhaler technique is necessary to assist clinicians and other health-care professionals who are involved in selecting inhalation devices<sup>33,49</sup></p>	<p>Inhaler technique educational videos for patient education in clinical practice<sup>15</sup></p> <p>Self-learning E-modules for staff in all departments<sup>15</sup></p> <p>Training all nurses, pharmacists and allied health to share responsibility in inhaler device and technique education<sup>15,49</sup></p> <p>Increasing education and disseminating guidelines in the working area utilising better implementation and change management strategies<sup>12</sup></p>	10/37

<p>Respiratory specialists and nurses adhered national guidelines more accurately over internists<sup>50</sup></p> <p>Misalignment of prescribing with GOLD<sup>a</sup> recommendations between respiratory physician and general physician<sup>36</sup></p> <p>Lack of clinician and multidisciplinary team co-operation<sup>18,38</sup></p> <p>The role of carers was poorly recognised in end stage COPD<sup>61</sup></p> <p>Palliative care or advance care planning not offered to end stage COPD<sup>a</sup> patients<sup>61</sup></p>	<p><b>Social/ Professional role and identity</b></p>	<p>Lack of inter speciality communication and guidance amongst clinicians<sup>36,50</sup></p> <p>Communication between Guideline Committees and Clinicians should be improved<sup>56</sup></p> <p>Variability in resources and organization of hospitals, patient characteristics, process of care, and outcomes<sup>19</sup></p>	<p><b>Opportunity (Social)</b></p>	<p><b>Persuasion, Enablement;</b> Cross fertilization of knowledge and practice patterns across clinicians so that all patients could receive evidence-based care in the most efficient manner (respiratory specialist clinicians versus internists)<sup>36</sup></p>	<p>Admission and Discharge bundle of care to integrate primary and tertiary care<sup>20</sup></p> <p>Nurse facilitated reminder system<sup>35</sup></p>	<p>9/37</p>
<p>Care gaps in the inpatient management of AECOPD<sup>a</sup> with guidelines<sup>11,12,36</sup></p> <p>The prevalence of clinical depression in patients with COPD<sup>a</sup> varies from 18% to 80%, yet not screened regularly with AECOPD<sup>a</sup>,<sup>59</sup></p> <p>Screening and pharmacological treatment for clinically confirmed depression not done as part of routine care<sup>59</sup></p>	<p><b>Environmental context and resources (staffing, funding, other resources)</b></p>	<p>Staff time constraints and lack of enthusiasm by senior clinical staff<sup>21,35</sup></p> <p>Clinicians lacking time to discuss palliative care or being fearful of taking away hope<sup>61</sup></p> <p>Current health care models with insufficient communication and collaboration<sup>29</sup></p> <p>Poor access, lack of Palliative care service capacity<sup>61</sup></p> <p>Lack of human resources including specialists in pulmonary rehabilitation, infrastructure, and establishment of a well-equipped pulmonary rehabilitation unit<sup>29</sup></p> <p>Lack of integration of multidisciplinary team of respirology and internal medicine ward physicians and allied health team members<sup>36</sup></p> <p>Communication difficulties between doctors and nurses<sup>65</sup></p> <p>Practical issues related to space and place for prescribing oxygen<sup>32,38</sup></p> <p>Evidence for effectiveness of a specific pharmacological therapy for treating COPD<sup>a</sup> related depression is still limited<sup>59</sup></p>	<p><b>Opportunity (physical)</b></p>	<p><b>Environmental restructuring, persuasion, Incentivisation</b></p> <p>Patient centred and coordinated interdisciplinary care across Primary, acute and community sectors<sup>38</sup></p> <p>Integrated, multidisciplinary services, are urgently required to address the unmet needs of people and carers with advanced COPD<sup>31</sup></p> <p>COPD<sup>a</sup> quality initiative framework for systematic follow-up of guideline to avoid variance of practice<sup>15,65</sup></p> <p>Care pathway implementation improves adherence with guidelines<sup>19</sup>.</p> <p>Pharmacological and non-pharmacological treatment options with cognitive behavioural based therapies, education, patient centred programmes<sup>59</sup></p>	<p>Automatic electronic linkage between hospital and community<sup>15</sup></p> <p>Simple preformatted order sets may be readily integrated into the diverse electronic health record platforms that currently exist across different hospitals<sup>10,12,47,54</sup></p> <p>Message alerts on computer login screens<sup>11,12,20,24</sup></p>	<p>16/37</p>
<p>Oxygen prescribing practices non adherent to guidelines<sup>32</sup></p> <p>Difficulty remembering updated guidelines<sup>30</sup></p>	<p><b>Memory attention</b></p>	<p>Difficulty recalling all delivery devices and management modality from COPD<sup>a</sup> guidelines<sup>11,12,41</sup></p>	<p><b>Capability (psychological)</b></p>	<p><b>Environmental restructuring, Enablement, Education</b></p> <p>Point of care checklist in respiratory wards have improved guideline adherence<sup>12</sup></p> <p>Health professional education and self-learning resources<sup>38</sup></p> <p>Decision-making algorithms (including electronic systems) and reminders at the time of consultation, and continuous quality assurance programmes<sup>54</sup></p>	<p>Admission bundle with electronic prescribing system<sup>20</sup></p> <p>Easy access to guidelines in clinical areas<sup>12</sup></p> <p>Electronic order sets<sup>10-12,18,20,33,47,54</sup></p>	<p>8/37</p>

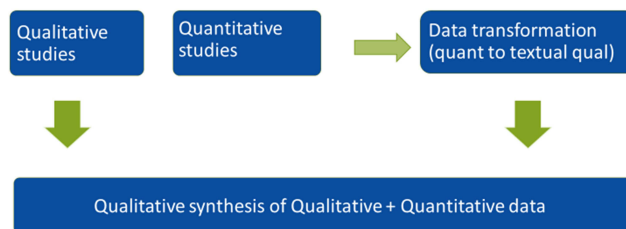
(Continued)

Table 1 (Continued).

Discordant Clinical Practice	TDF <sup>a</sup> Domain	COPD <sup>a</sup> Guidelines Uptake Barrier	COM-B <sup>a</sup> Components	BCW <sup>a</sup> /Study Recommendations	Solutions/Future Research Recommendations	Frequency Scores /37
<p>Lack of adherence to long-acting bronchodilators (LABD<sup>a</sup>)<sup>36,46</sup></p> <p>Poor concordance with AECOPD<sup>a</sup> guidelines was observed in terms of antibiotic prescribing<sup>48</sup></p> <p>Lack of prevention of future exacerbations with particular attention to smoking cessation, current vaccination knowledge of current therapy including inhaler technique and self-management<sup>22</sup></p> <p>Inconsistent pharmacotherapy adherence with GOLD<sup>a</sup> guidelines<sup>48</sup></p> <p>Poor compliance and variability in clinician practice with NIV<sup>a</sup>, bronchodilators and systemic steroids in the emergency department<sup>11,12,41</sup></p> <p>Systemic corticosteroid regimens used in clinical practice are administered for much longer periods and at higher doses than recommended in guidelines<sup>18,37,42</sup></p> <p>Low utilisation of pulmonary rehabilitation<sup>10,12,20,33,36,52,65</sup></p> <p>Lack of implementation of vaccination<sup>10,29</sup></p> <p>Unvaccinated patients not vaccinated in the acute setting<sup>15</sup></p> <p>Low utilisation of spirometry and ABG<sup>a</sup> for COPD<sup>a</sup> diagnosis<sup>22,23,31,32,52</sup></p>	<b>Behavioural regulation</b>	<p>Failure to adhere to GOLD<sup>a</sup> guidelines LABD<sup>a</sup> prescription<sup>15,43</sup></p> <p>Suboptimal understanding of guideline recommendations lack of perceived treatment benefit, low self-efficacy and time constraints<sup>49</sup></p> <p>Poor uptake of evidence by clinicians<sup>12,23</sup></p> <p>Varying standards of PR<sup>a</sup> program and access<sup>23,36</sup></p>	<b>Capability (Psychological)</b>	<p><b>Modeling, Enablement</b></p> <p>Initiation and management of patients on LABD<sup>a</sup> to prevent exacerbations<sup>36,46</sup></p> <p>Dedicated AECOPD<sup>a</sup> pathway may improve antibiotic selection, and help to drive compliance with guidelines<sup>19,34,47,65</sup></p> <p>Further research and implementation strategies recommended to study reasons behind discordant antibiotic prescribing practice<sup>47</sup></p> <p>Well-structured screening protocol or program-based multimodality COPD<sup>a</sup> care service should be developed<sup>12</sup></p> <p>ED<sup>a</sup> short stay unit pathways and access to community follow-up care with primary care or specialist clinics, disease specific outreach services<sup>11,23</sup></p> <p>Guidelines were more specifically targeted to the process of emergency care may be more meaningful to ED<sup>a</sup> clinicians<sup>11,23</sup></p> <p>Rehabilitation professionals and social supporters can make rehabilitation more long-lasting and facilitate people with COPD<sup>a</sup> to participate in activity by motivating and encouraging them, reducing their fears and reinforcing the benefits of activity participation<sup>20,52</sup></p> <p>Physicians should collaborate with hospital authorities to establish smoking cessation teams and pulmonary rehabilitation units<sup>29</sup></p> <p>Integrated care pathway to improve non- pharmacological treatment in COPD<sup>a</sup>,<sup>18</sup></p> <p>Improve adherence to guidelines including clinical bundle services<sup>24</sup></p> <p>Dedicated and holistic bundles of care for AECOPD<sup>a</sup> have been implemented in the United Kingdom and have been demonstrated to improve patient management<sup>20,24</sup></p> <p>Pro-forma aided COPD<sup>a</sup> management in concordance to guidelines significantly improves the standards of care in COPD<sup>a</sup> patients in the ED<sup>a</sup>,<sup>11,41</sup></p> <p>Evidence-based electronic order sets improved compliance with clinical practice guidelines<sup>10–12,18,20,33,47,54</sup></p>	<p>Electronic order sets<sup>10–12,18,20,33,47,54</sup></p> <p>Evaluation audits and targeted health professional education for each discipline<sup>58</sup></p>	36

**Abbreviations:** <sup>a</sup>TDF, theoretical domains framework; BCW, behavior change wheel; COM-B, capability, opportunity, motivation; COPD, chronic obstructive pulmonary disease; GOLD, Global Initiative Obstructive Lung Disease; AECOPD, acute exacerbation of COPD; NIV, non-invasive ventilation; ABG, arterial blood gas; LABD, long-acting bronchodilators; ICS, inhaled corticosteroids; PR, pulmonary rehabilitation; ED, emergency department.

### JBI convergent integrated mixed method review



**Figure 2** Represents data extraction graphic representation.

**Note:** Research design stages from JBI convergent integrated method for systematic review [Data extracted from Stern et al., 2020]<sup>28</sup>.

training, restriction, environmental restructuring, modeling and enablement) and seven policy change categories (guidelines, environmental/social planning, communication/marketing, legislation, service provision, regulation, fiscal measures).<sup>25</sup> Sub-components of COM-B were merged with the domains, barriers, and recommendations from the studies to produce interventions that if adopted by clinical stakeholders may assist in enhancing COPD guideline adherence.

## Review Questions

What core elements of the COPD guidelines are adhered to by interdisciplinary health professionals?

What are the contributing factors to the lack of COPD guidelines concordance amongst interdisciplinary health professionals in hospitals?

## Search Strategy and Study Selection

Qualitative, quantitative, and mixed methods studies were included to explore determinants of COPD guidelines concordance. A comprehensive three-tier search strategy was utilised to search nine databases (COCHRANE, EBSCO HOST, MEDLINE, SCIENCE DIRECT, JBI, SCOPUS, WEB OF SCIENCE, WILEY and DARE).<sup>14</sup> Studies published in English from 2010 to May 2021 from the nine identified databases were included. Although the protocol mentions including studies from 1997, during the review reported factors of non-adherence data was non-congruent with study reports in recent years. Hence, studies published before 2010 were excluded. Two independent reviewers screened abstracts (HI, CM) and full-text articles (HI, CM), (HI, MT), (HI, JL) in consonance with inclusion criteria. Disagreements that arose between the reviewers at each stage of the study selection process were resolved through discussion, or with a third reviewer (CM/MT). A PRISMA report of the search process and outcomes was produced.

Inclusion criteria consisted of studies and reports published on interdisciplinary COPD guidelines concordance, compliance, or adherence in the hospital setting. Reviews of GOLD guidelines and COPD X plan guidelines were included. Exclusion criteria included studies not reported in English and studies which had not measured COPD guideline concordance. Primary health-care and community-based COPD guidelines concordance studies were excluded. The study population involved doctors, nurses, and allied health-worker reports on COPD guidelines concordance in the context of data from emergency departments, inpatient hospital units and hospital-based rehabilitation units.

## Quality Appraisal

Quality appraisal was performed by two independent reviewers (HI, CM) utilising specific standardised critical appraisal instruments from the JBI system. Studies that were selected regardless of the methodological quality underwent extraction and synthesis. Critical appraisal results were tabled and appended to the review retrieval. See [Supplementary Material.1](#).

## Data Extraction and Transformation

A mixed methods data extraction tool designed for a convergent integrated approach (integration of qualitative data and “qualitised” data following data transformation) was published in the protocol and utilised to extract data.<sup>14</sup> This extraction tool included study type, the methodology, the number and characteristics of participants, the phenomenon of lack of concordance, guideline type, context (cultural and geographic), setting (hospitals, EDs and inpatient units), concordance with main recommendations of COPD guidelines, implementation method, evaluation and sustainability of implementation, and remissions within 30 days of hospital discharge. Two independent reviewers confirmed extracted data from articles and any

disagreements were settled using the third reviewer utilising COVIDENCE systematic review management software. Quantitative data were converted to “qualitised data” following extraction according to the JBI convergent integrated approach. Quantitative numerical data were transfigured to textual or narrative interpretations to answer the overarching review question.

## Data Synthesis and Integration

Extracted data in the form of themed textual description from quantitative studies plus themes and subthemes from qualitative studies were collated and categorised in congruence to 14 domains of TDF (see Table 1). Applying the TDF assisted in identification of determinants or factors leading to a lack of COPD guidelines concordance. Identified barriers and enablers in guideline uptake were aligned with standard taxonomy of behavioral change technique to report existing and future recommendations for implementation strategies.<sup>25,26</sup> Factors contributing to the lack of concordance with the guidelines were integrated based on similarity in meaning. This review adhered to the PRISMA-ScR reporting guidelines which also provided a comprehensive approach to suggest implementation strategies regarding any identified publication bias of this guidelines non-concordance phenomenon.

## Results

This review included 37 studies (see Figure 1), that reported on COPD-X or GOLD guidelines concordance with 14 studies reported from Australia, 12 from Europe, 2 from Canada and the remaining 9 from developing countries. Table 2 contains included studies demographics, barriers, potential solutions or recommendations (see Table 2). COPD recommendations identified as highly discordant from clinical practice were initiating non-invasive ventilation, over- or under-prescription of corticosteroids, antibiotic use, and lack of discharging patients with smoking cessation and pulmonary rehabilitation plans. TDF domains with highest frequency scores above 15 and over 37 were knowledge, environmental resources, and clinical behavior regulation. Domains that scored below 15 were skills, memory attention and decision processes, social/ professional role identity. Results are disseminated in the following paragraphs as problems, related TDF domains bracketed within results, supporting evidence or statistics, solutions, and recommended implementation strategies from the literature.

## Diagnostic Utilisation of Spirometry, ABG and Oxygen Management

GOLD and COPD-X guidelines state diagnosis should occur utilising gold standard spirometry to detect persistent airflow limitation, however only 41% of Nigerian physicians knew spirometry diagnostic criteria and only 26.9% were aware of how to assess severity (*knowledge*).<sup>29</sup> Low rate of guideline adherence with 61.5% for 2011 and 49.6% for 2017 GOLD guidelines were reported from a Korean study.<sup>30</sup> Low utilisation of Arterial Blood Gas (ABG) data to utilise non-invasive ventilation (NIV) and diagnostic inaccuracy with respiratory failure is frequently reported in multiple studies.<sup>11,22–25</sup> Despite suitable ABG and NIV equipment being available patients were not started on this treatment.<sup>22–24,30,31</sup> Lack of knowledge and awareness of spirometry guidelines was identified as a key contributor to mistreatment, misdiagnosis, and inaccurate management.<sup>11,12,19,20,23,29,31,32</sup> Unavailability of spirometry test results despite previous diagnosis and admissions (*behavioral regulation*) was consistently addressed as a barrier from fragmented discharge planning and primary care diagnostic intervention.<sup>22</sup> Spirometry awareness campaigns and care bundles have successfully increased knowledge in some countries.<sup>18–20,24,33,34</sup> An accurate assessment of smoking history as a surrogate measure of the severity of COPD was reported as a potential substitute to spirometry particularly in the ED during acute exacerbation episodes when pulmonary function tests cannot be performed due to severity of presentation.<sup>8,18,23</sup>

An Australian retrospective clinical audit reported unnecessary use of NIV in patients with adequate oxygenation (*knowledge, behavior regulation*)<sup>10,35</sup> whereas another Australian study reported NIV was not utilised adequately despite meeting the guideline criteria (*behavior regulation*).<sup>36</sup> Low adherence was reported from Europe, Australia and Ireland in pre-hospital oxygen management which continues in the emergency department (until specialist review) with poor clinical outcome such as hypercapnic respiratory failure (*social/professional role and identity*).<sup>10,22,24,36,37</sup> Several patients not having an ABG test documented also received high-flow oxygen.<sup>23</sup> High-flow oxygen was used for the initial treatment of COPD exacerbations when only 53% of patients were recognised to have COPD.<sup>32</sup> In addition to patients not having an ABG test documented also receiving high-flow oxygen (*behavior regulation*),<sup>11,22,38</sup> reduced awareness of guidelines especially among junior doctors was identified (*knowledge*).<sup>39</sup> A reported disjunct exists between holistic



**Table 2** Included Studies Demographics, Barriers, Potential Solutions/Recommendations

Included Studies References	Title	Aims	Methods	Country	Sample Size	Barriers	Solutions/Research Recommendations
1) Smallwood 2018 <sup>60</sup>	Attitudes to specialist palliative care and advance care planning in people with COPD: a multi-national survey of palliative and respiratory medicine specialists	To explore the approaches of respiratory and palliative medicine specialists to palliative care and advance care planning (ACP) in advanced COPD	Cohort study	Australia, New Zealand, and UK	N=440 Respiratory-117 Palliative-263 clinicians	Difficulty in prognosis of COPD <sup>a</sup> due to the variable disease trajectory. Clinicians lacking time to discuss palliative care or being fearful of taking away hope palliative specialist availability Current health care models with insufficient communication and collaboration Poor access, lack of palliative care service capacity	Patient led Advanced Care Planning discussions Respiratory doctors to initiate the conversation and refer to palliative specialist for individualised planning Integrated multidisciplinary services to address fragmented care
2) Lipari 2018 <sup>18</sup>	Adherence to GOLD Guidelines in the Inpatient COPD <sup>a</sup> Population	Assessed the management of inpatient COPD <sup>a</sup> exacerbations at an urban teaching hospital	Cohort study (Retrospective)	United States	N=94 patients	Consistent variation in provider guideline adherence. Variability in dosing schedule and duration of corticosteroids Vaccination document lower in summer months (10%) Approximately half of COPD <sup>a</sup> readmissions in this hospital did not receive steroids during their first admission	Electronic care order sets for consistent steroid prescription. Improve documentation during hospital admission utilising electronic medical record. Quality improvement projects to improve guideline adherence utilising clinical bundle services
3) Marcos 2017 <sup>44</sup>	Treatment with Systemic Steroids in Severe Chronic Obstructive Pulmonary Disease Exacerbations: Use of Short Regimens in Routine Clinical Practice and Their Impact on Hospital Stay	Explore short courses of systemic corticosteroids are followed in clinical practice	Cohort study (Prospective observational)	Spain	N=158 patients	Real world practices vary from guidelines and impact hospital stay Delayed switch to oral treatment Doses of corticosteroid use in asthma being transferred to COPD <sup>a</sup> Risk of adrenal crisis due to abrupt withdrawal of prescribed dose Despite the evidence oral steroids are not inferior to intravenous steroids usage of IV <sup>b</sup> steroids Recommended duration is tripled as to 5 days in practice	Factors such as social considerations, hospital inefficiencies and continued care after discharge needs to be further researched
4) Masoompour 2016 <sup>58</sup>	Adherence to the Global Initiative for Chronic Obstructive Lung Disease guidelines for management of COPD <sup>a</sup> : a hospital-based study	To determine the level of adherence to the GOLD <sup>a</sup> guidelines, we compared our inpatient management o COPD to these guidelines	Cross sectional study	Iran	N=96 patients admission	No local standard guidelines for managing COPD in Iran	Develop targeted interventions aimed at improving the implementation of guidelines Further research to determine the efficacy of this new interventions

(Continued)

Table 2 (Continued).

Included Studies References	Title	Aims	Methods	Country	Sample Size	Barriers	Solutions/Research Recommendations
5) Melani 2016 <sup>49</sup>	Maintaining Control of Chronic Obstructive Airway Disease: Adherence to Inhaled Therapy and Risks and Benefits of Switching Devices	To evaluate the issues involved in maintaining control of COPD <sup>a</sup> , predominantly related to adherence to prescribed inhaled medications, and the potential benefit and risks of switching devices	Critical review	Italy	Search strategy not mentioned	Lack of awareness of the consequences of poorly controlled disease Concerns about drug side effects, or loss of efficacy, or development of addiction Poor medical-patient communication; poor medical-other health caregivers' partnership in patient's education. Lack of continuity of care, no written plan; physician's underestimation of disease control; poor supervision, training, or follow-up of patients; and poor education to inhaler training	Easier-to-use devices and educational strategies on proper inhaler use from health caregivers can improve inhaler technique. Switching to a more appropriate patient centred inhaled therapy is recommended. A comprehensive list including all inhalers in the market, edited by scientific societies face-to-face practical instruction of proper inhaler use at prescription, and regular checks at follow-up visits. Training other staff other than physicians to provide inhaler technique education
6) Menzella 2012 <sup>19</sup>	Clinical audit on diagnostic accuracy and management of respiratory failure in COPD <sup>a</sup>	The aim of the study was to evaluate the adequacy of diagnosis and management of respiratory failure (RF) in COPD <sup>a</sup>	Quantitative (Retrospective clinical audit)	Canada	N=130 patients	Accurate diagnosis and categorisation are essential in implementing quality improvement measures based on clinical audits	Clinical pathways for uniform oxygen management
7) Migone 2015 <sup>20</sup>	Patients Hospitalised with an Acute Exacerbation of COPD <sup>a</sup> : Is There a Need for a Discharge Bundle of Care	Identify the proportion of those patients admitted with AECOPD who had received a number of recommended interventions by the time of discharge. A secondary aim of the study was to examine the association between the delivery of recommended interventions and care under a respiratory physician and a respiratory clinical nurse specialist (RCNS)	Quantitative (Retrospective chart audit)	Ireland	N=174 patients	Lack of knowledge of the benefits of some interventions (pulmonary rehabilitation particularly for non-respiratory physicians) Difficulty in implementing recommendations from guidelines where complex behaviour change is required (written self-management plans, may be a barrier) Perception amongst hospital doctors that some interventions are the responsibility of general practitioners. This has been reported in the literature in relation to smoking cessation and vaccination	Electronic reminders & bundles of care. Discharge bundle of care reduced readmissions for COPD and increased adherence to guidelines bundle of care. Discharge bundle improved referral for smoking cessation assistance from 18.2% to 100% and review of inhaler technique increased from 59.1% to 91.2% of admissions. Care bundle impact on pulmonary rehabilitation referral rates rose from 13.6% to 68%. Similar improvements were seen in administration of self-management plans Training of medical staff of the benefits of interventions for patients with COPD <sup>a</sup> is also important

8) Overington 2014 <sup>12</sup>	Implementing clinical guidelines for chronic obstructive pulmonary disease: barriers and solutions	This review explores these critical issues, gaining insight from efforts in clinical guidelines for other chronic diseases, and applying these principles to improving uptake of the COPD <sup>a</sup> guidelines amongst clinicians	Literature Review	Australia	N=5 studies	Low awareness Clinician knowledge of COPD <sup>a</sup> management is low worldwide Time constraints Disparity in guideline awareness	Targeted health professional education Clinical decision-making algorithms Electronic reminders at clinical points Continuous quality assurance projects Supportive clinical behavior enablers Brief summaries of guideline in clinical areas Direct mailing guidelines to Clinicians Education sessions with didactic and interactive content Electronic health records Readily accessible guidelines Multifaceted implementation programmes (pamphlets, reminders and meetings) Point of care checklists (electronic)
9) Pozo-Rodríguez 2012 <sup>54</sup>	Clinical audit of COPD patients requiring hospital admissions in Spain: AUDIPOC <sup>a</sup> study	AUDIPOC is a nationwide clinical audit that describes the characteristics, interventions and outcomes of patients admitted to Spanish hospitals because of an acute exacerbation of chronic obstructive pulmonary disease (AECOPD), assessing the compliance of these parameters with current international guidelines	Prospective cross-sectional study	Spain	N=5178 patients (225 participating hospitals in a national audit)	Variability of care at the hospital level and non-compliance with recommendations regarding diagnosis or in-hospital treatment Level of information included in the final discharge report did not include recommendations related to general health practices and lifestyle improvements and were provided to only 50% patients Minimal interventions aimed at promoting smoking cessation, an active lifestyle (including rehabilitation prescription) and/ influenza or pneumococcal vaccination	The association of access to electronic/ digital information with the number of interim and definite cases suggests that the use of information technologies may increase the identification of cases and, possibly, improve the audit process

(Continued)

Table 2 (Continued).

Included Studies References	Title	Aims	Methods	Country	Sample Size	Barriers	Solutions/Research Recommendations
10) Pretto 2012 <sup>52</sup>	Multicenter audit of inpatient management of acute exacerbations of chronic obstructive pulmonary disease: comparison with clinical guidelines	Document variability and identify gaps from guidelines in management practices to allow targeted interventions to be developed to improve quality of care	Retrospective medical record audit	Australia	N=221 patients	<p>Non provision of non-invasive ventilation (NIV), due to medical decision to not escalate treatment, patient responding well to medical treatment or patient refusal</p> <p>Low respiratory specialist referral and pulmonary rehabilitation referrals</p> <p>Low level of support to implement smoking cessation in public hospitals</p> <p>Lack of standard communication regarding pulmonary function testing</p> <p>Low utilisation of ABG<sup>a</sup> data to utilise NIV<sup>a</sup></p> <p>Lack of previous experience with NIV<sup>a</sup> initiation. Lack of staff education on NIV<sup>a</sup></p> <p>More than quarter discharged patient from rural hospital were readmitted within 28 days</p> <p>Low concordance to COPD<sup>a</sup> management guidelines</p>	<p>Targeted educational intervention for utilisation of NIV<sup>a</sup></p> <p>Target specific practices in the development of AECOPD<sup>a</sup> management policies</p>
11) Roberts 2013 <sup>22</sup>	European hospital adherence to GOLD <sup>a</sup> recommendations for chronic obstructive pulmonary disease (COPD) exacerbation admissions	Understanding how European care of chronic obstructive pulmonary disease (COPD) admissions vary against guideline standards provide an opportunity to target appropriate quality improvement interventions	Retrospective case note audit	Austria, Belgium, Croatia, Greece, Malta, Poland, Republic of Ireland, Romania, Spain, Switzerland Turkey and the United Kingdom	N=16018 patients (384 hospitals)	<p>Unavailability of spirometry test results despite previous admissions</p> <p>patients not having an ABG test documented also received Oxygen.</p> <p>Inappropriate antibiotic prescription</p>	<p>Primary and secondary care spirometry results access</p> <p>Understanding care quality and deficiencies provide opportunities for targeted interventions that could produce significant patient benefits</p>
12) Sandhu 2013 <sup>50</sup>	Variations in the management of acute exacerbations of chronic obstructive pulmonary disease	Evaluate adherence to current guidelines across different physician groups and patient outcomes were assessed	A retrospective chart review	Canada	N=293 patients	<p>Lack of physician awareness of guidelines</p> <p>Care gaps between general internists, respiratory physicians and hospitals</p>	<p>Risk stratification and appropriate optimization of maintenance therapy at the time of discharge</p> <p>Cross fertilisation of knowledge by respiratory physicians to other departments</p>

13) Seys 2017 <sup>65</sup>	An International Study of Adherence to Guidelines for Patients Hospitalised with a COPD <sup>a</sup> Exacerbation	The aim of this study is to perform an importance-performance analysis as an approach for prioritisation of interventions by linking guideline adherence rates to expert consensus on the importance for follow /through in hospital management of COPD <sup>a</sup> exacerbation	Cluster randomised controlled trial	Belgium	N=378 patients	Lowest adherence to guidelines can mainly be seen for indicators related to patient education (such as oxygen therapy), nutritional assessment, pulmonary rehabilitation and discharge management. Managerial issues, eg. communication gap between management and prescribers lack of persuasion from the administration, and scientific issues, eg. faulty guideline development Process or guideline is not-up-to-date, relevant or disagreement with the guideline Guideline is too complicated and difference in clinical scenario to the ones mentioned in guidelines	Performance analysis to develop quality framework for systematic follow up of guideline recommendations Care pathways can be used as a framework for clinical interventions as they are based on evidence
14) Seys 2018 <sup>63</sup>	Teamwork and Adherence to Recommendations Explain the Effect of a Care Pathway on Reduced 30-day Readmission for Patients with a COPD <sup>a</sup> Exacerbation	This study aimed to increase our understanding of processes that underlie the effect of care pathway implementation on reduced 30-day readmission rate.	Cluster randomised trial	Belgium Italy Portugal	N=257 patients (19 hospitals)	Staff burn out Team climate for innovation	Care pathway implementation was significantly associated with better guideline adherence and reduced 30-day readmission. Clinical interventions Priority indicators for departments
15) Sha 2019 <sup>10</sup>	Hospitalised exacerbations of chronic obstructive pulmonary disease: adherence to guideline recommendations in an Australian teaching hospital	To examine current practice in management of COPD <sup>a</sup> exacerbations at an Australian teaching hospital and to compare with COPD-X Plan recommendations	Retrospective chart audit	Australia	N=134 patients	Reduced awareness of guidelines especially among junior doctors Venous blood gas (VBG) being an unreliable substitute for arterial blood gas (ABG) assessing presence of hypercapnic respiratory failure may be due to patient refusal, clinician concern about patient tolerability and easier technique for clinicians Time poor clinicians may overlook smoking and immunisation history NIV <sup>a</sup> provided unnecessarily to patients with adequate oxygenation Antibiotics administration despite normal white cell count Use of corticosteroids without indication Underutilisation of pulmonary rehab Reduced vaccination recommendations	Electronic alerts and care sets

(Continued)

Table 2 (Continued).

Included Studies References	Title	Aims	Methods	Country	Sample Size	Barriers	Solutions/Research Recommendations
16) Wijayaratne 2013 <sup>36</sup>	Differences in care between general medicine and respiratory specialists in the management of patients hospitalised for acute exacerbations of chronic obstructive pulmonary disease	The aims of this study were to firstly examine the differences in AECOPD <sup>3</sup> management of general medicine practitioners (GMP) and Respiratory specialist (RS) and secondly compare their care to national COPD guidelines	A retrospective review	Australia	N=169 patients	Inadequate utilisation of NIV despite meeting guideline criteria Differences in medication prescription between general medicine physicians and Respiratory specialist GMP performed fewer investigations and provided less pharmacological management while in hospital compared to RS Lower rates of referral to pulmonary rehabilitation s low awareness, low support for rehabilitation at multiple levels, lack of time and a perceived difficult referral process GMP did not prescribe short-acting beta-agonists (SABA <sup>3</sup> ), long-acting anti-cholinergic, combination LABA <sup>3</sup> /ICS <sup>3</sup> and systemic steroids as frequently as RS and instead prescribed short-acting anti-cholinergic more frequently.	Further research to understand reasons behind poor prescription of NIV <sup>3</sup> for eligible patients
17) Vanhaecht 2016 <sup>34</sup>	Impact of a care pathway for COPD <sup>3</sup> on adherence to guidelines and hospital readmission: a cluster randomized trial	The primary aim of this study was to evaluate whether implementation of a care pathway (CP) for COPD improves the 6 months readmission rate	Pragmatic cluster randomised controlled trial	Belgium, Ireland, Italy and Portugal	N=174 patients (11 hospitals)	Nonpharmacological management observed to be suboptimal particularly education required care recommendations such as smoking cessation, inhaler technique and pulmonary rehab	Care pathway implementation significantly lowered 30-day readmission rate and improved performance on process indicators Clinical audits and continuous quality improvements to target and improve low performing indicators

18) Susanto 2015 <sup>32</sup>	Assessing the use of initial oxygen therapy in chronic obstructive pulmonary disease patients: a retrospective audit of pre-hospital and hospital emergency management	Assess the use of O <sub>2</sub> therapy and FiO <sub>2</sub> in the emergency management of patients with a known diagnosis of COPD <sup>a</sup>	Retrospective audit	Australia	N=150 patients	High-flow oxygen is used for the initial treatment of COPD exacerbations when only 53% patients were recognised to have COPD A lack of recognition of COPD high flow oxygen initiated in ambulances continued in ED <sup>a</sup> in spite of down titration Blood gas measurements were performed, but there was a high proportion of VBG measurements rather than the recommended arterial analysis	Larger, prospective studies would be required to confirm the possible harm of un-titrated oxygen approach in COPD <sup>a</sup> Patients The implementation of current oxygen guidelines for use in the pre-hospital setting and education of those who are involved in treating COPD patients in emergency care and other situations may reduce the risk of complications in COPD patients. Developing oxygen administration guidelines depending on the initial SpO <sub>2</sub> would be useful as this could potentially prevent administration of high-flow Oxygen as first line treatment. Education of patients regarding their diagnosis of COPD <sup>a</sup> , the importance of alerting ambulance and medical personnel to the diagnosis and the provision of a medical alert bracelet or oxygen alert card, especially in those with known hypercapnia. The utilisation of a dedicated oxygen prescription chart, which has been used in some hospitals, may also be of some benefit.
19) Brownridge 2017 <sup>47</sup>	Retrospective audit of antimicrobial prescribing practices for acute exacerbations of chronic obstructive pulmonary diseases in a large regional hospital	Evaluate the antibiotic prescribing practices in acute exacerbations of chronic obstructive pulmonary disease (AECOPD <sup>a</sup> ) patients, and to compare the differences in clinical outcomes (primarily mean length of stay and the rate of unplanned readmissions) between patients who received broad vs narrow-spectrum antibiotic	Implementation audit	Australia	N=130 patients	Inappropriate use of antimicrobial agents representing a modifiable factor responsible for driving antimicrobial resistance Only Ten per cent of patients received guideline concordant antimicrobial therapy The single most common reason for non-compliance with current guidelines was the use of dual antibiotic therapy	AECOPD pathway may improve antibiotic selection and help to drive compliance with guidelines. Dedicated and holistic bundles of care for AECOPD <sup>a</sup> have been implemented in the United Kingdom and have been demonstrated to improve patient management. Future antimicrobial stewardship initiatives should target inappropriate use of antibiotics in AECOPD <sup>a</sup> .
20) Kim 2019 <sup>30</sup>	Adherence to the GOLD Guideline in COPD <sup>a</sup> management of South Korea: Findings from KOCOSS Study 2011–2018	Examine the adherence to the GOLD <sup>a</sup> guidelines, we examined the patterns of prescribed medication in COPD <sup>a</sup> patients from 2011 to 2018.	Cohort study	Korea	N=1818 patients	The common type of inappropriate COPD <sup>a</sup> treatment is overtreatment, with inhaled corticosteroid (ICS <sup>a</sup> ) containing regimens Low rate of guideline adherence with 61.5% for 2011 and 49.6% for 2017	Standardization of COPD pharmacological treatment utilising GOLD <sup>a</sup> guidelines Better implementation strategy to optimize the use of these guidelines a

(Continued)

Table 2 (Continued).

Included Studies References	Title	Aims	Methods	Country	Sample Size	Barriers	Solutions/Research Recommendations
21) Kelly 2019 <sup>11</sup>	Get with the guidelines: management of chronic obstructive pulmonary disease in emergency departments in Europe and Australasia is sub-optimal	To determine compliance with guideline recommendations for patients treated for COPD in ED in Europe (EUR) and South East Asia/Australasia (SEA) and to compare management and outcome	Prospective cohort study	Australia Europe South-east Asia	N=801 patients	<p>Compliance with guideline recommended treatments, in particular administration of corticosteroids and NIV<sup>a</sup>, was sub-optimal in both regions</p> <p>The proportion of patients with acidosis who received treatment with NIV<sup>a</sup> was also lower than expected, despite level I evidence that it improves outcome. I lack of awareness of the evidence, lack of availability of the required equipment in ED and lack of appropriately trained staff to undertake this therapy safely in ED<sup>a</sup>.</p> <p>Patient declining NIV or clinician underestimating severity of COPD<sup>a</sup></p> <p>The evidence suggests there may be a disjunct between ward-based pathways and ED<sup>a</sup> pathways for this patient group, a gap that should be closed lack of awareness of the evidence, the cognitive overload associated with ED<sup>a</sup> practice, time constraints in ED<sup>a</sup>, distraction and competing patient priorities as several patients, high turnover of ED<sup>a</sup> staff making it difficult to ensure that all staff are educated in evidence-based recommendations and recent change</p>	<p>Individual health services local audit to inform individual health services and hopefully encourage them to audit their own practice and implement quality improvement activities with an emphasis on the identified gaps</p> <p>COPD<sup>a</sup> proforma or checklist use of clinical informatics systems, computer-assisted decision support Disease specific ED<sup>a</sup> short stay unit pathways and access to appropriate follow-up care (such as primary care or specialist clinics, disease specific outreach services, encourage smoking cessation</p>



22) Harrison 2017 <sup>37</sup>	Inappropriate inhaled corticosteroid prescribing in chronic obstructive pulmonary disease patients	This study quantified the proportion of patients with COPD <sup>a</sup> on ICS <sup>a</sup> treatment despite a post-bronchodilator FEV1 <sup>a</sup> $\geq$ 50%.	Retrospective medical audit	Australia	N=707 patients	Significant discordance exists between guideline recommendations and inhaler prescription over-prescription of ICS <sup>a</sup> in COPD <sup>a</sup> .	COPD-X and the Pharmaceutical Benefit Scheme recommend that the introduction of inhaled corticosteroid (ICS) and long-acting beta-agonist combinations (LABA) should be reserved for patients with a post bronchodilator FEV1 <sup>a</sup> less than 50% predicted and those who experience more than two exacerbations in 12 months Encourage guideline education and prescribing within guidelines
23) Jouleh 2018 <sup>55</sup>	Guideline adherence in hospital recruited and population based COPD <sup>a</sup> patients	Estimate and compare the guideline adherence to COPD <sup>a</sup> treatment in general population-based and hospital-recruited COPD <sup>a</sup> patients, and find possible predictors of guideline adherence	Prospective observational cohort study	Norway	N= (cohort 1-90) N= (cohort- 2-245)	Adherence to guidelines were significantly lower in cohort treated by general physicians in diagnostic, pharmacological and non-pharmacological management Educational institutions not utilising COPD <sup>a</sup> guidelines particularly with nurses and physiotherapists	Reliable and regularly updated guidelines are therefore, very valuable for clinicians, and help them provide the best care for their patients at any time. Possible establishment of incentives for the health care personnel who do adhere to the guidelines Accessible guidelines for healthcare workers, drug devises that facilitates compliance, accessible rehabilitation facilities, and vaccination programmes to ensure that COPD <sup>a</sup> patients are offered the best care available.

(Continued)

Table 2 (Continued).

Included Studies References	Title	Aims	Methods	Country	Sample Size	Barriers	Solutions/Research Recommendations
24) Desalu 2013 <sup>29</sup>	Guideline adherence in hospital recruited and population based COPD <sup>a</sup> patients	To assess physicians' understanding, adherence, and barriers to implementation of GOLD guidelines in Nigeria	Cross-sectional study	Nigeria	N=156 physicians	<p>Lack of familiarity was cited as the most common barrier to adherence to the guidelines</p> <p>Lack of awareness, non-familiarity, outcome of expectancy, time constraints, and non-agreement with recommendation.</p> <p>Environmental, and guideline-related factors which are beyond the control of physicians</p> <p>Lack of knowledge of spirometry interpretation may also be associated with the low utilisation as only one-quarter (26.9%) of the respondents could correctly make a spirometric diagnosis of COPD<sup>a</sup></p> <p>Health facilities (specialist and medical equipment) are inadequate in Nigeria, especially in rural areas. Most of the tertiary hospitals are located in the urban areas, of which only 29.4% have a spirometer Political commitment and resources are also lacking, and the allocation of a budget and human resources for the prevention and management of COPD<sup>a</sup> is not a priority</p> <p>Low utilisation of pulmonary rehabilitation may be attributed to lack of human resources including specialists in pulmonary rehabilitation, infrastructure, and establishment of a well-equipped pulmonary rehabilitation unit in most hospitals in Nigeria. Poor awareness of its impact on the outcome of management, non-availability, and affordability of the vaccines</p>	<p>Frequent exposure of more senior doctors to the recommendations of the guidelines from several sources of continuing medical education (CME) and publications. World</p> <p>Spirometry Day should be used to increase the awareness and use of Spirometry</p> <p>Continuing medical education (CME) on these modalities of therapy.</p> <p>Physicians should collaborate with hospital authorities to establish smoking cessation teams and pulmonary rehabilitation units.</p> <p>The pharmaceutical industry can also contribute by making available cheaper vaccines for COPD<sup>a</sup> patients</p> <p>Educational interventions are required to achieve optimal care for COPD<sup>a</sup> patients.</p>

25) Tang 2014 <sup>38</sup>	Level of adherence to the GOLD <sup>a</sup> strategy document for management of patients admitted to hospital with an acute exacerbation of COPD <sup>a</sup>	Evaluate the level of adherence among health professionals to GOLD <sup>a</sup>	Retrospective audit	Australia	N=240 patients	Over prescription of antibiotics and oxygen therapy Poor adherence to steroids and antibiotics Non-pharmacological management such pulmonary rehabilitation and smoking cessation Factors such as time constraints and lack of awareness about resources may be the reasons for the poor adherence. Reduction in hospital beds puts pressure to provide suboptimal treatment Lack of clinical advocacy by senior clinicians Ambiguity in recommendations from GOLD <sup>a</sup> recommendations	Clinical practice review to improve nonpharmacological management Improving environmental resources, promotion campaigns Targeted educational sessions specialised to each discipline Interactive educational tools, specific cue cards in clinical practice and presence of hospital clinical champions Improved communication between hospitals and primary care practitioners Clarity and communication by senior clinicians to address ambiguity to choose of evidence-based practice
26) Ta 2011 <sup>43</sup>	Management of chronic obstructive pulmonary disease in Australia after the publication of national guidelines	To evaluate COPD <sup>a</sup> patient adherence to treatment recommendations and healthcare provider adherence to the COPD <sup>a</sup> -X Plan	Cross-sectional study	Australia	N=45 patients	Patient self-reported medication non-adherence Suboptimal Inhaler technique Lack of self-management of exacerbations plan or teaching by clinicians Long-term steroid and prophylactic antibiotic prescription. Over-prescription of ICS <sup>a</sup> and under prescription of tiotropium	Appropriating grading of severity of COPD <sup>a</sup> and use of spirometry to distinguish COPD <sup>a</sup> from other respiratory conditions like Asthma
27) Fanning 2014 <sup>48</sup>	Adherence to guideline-based antibiotic treatment for acute exacerbations of chronic obstructive pulmonary disease in an Australian tertiary hospital	This study aimed to (1) define antibiotic prescribing practice in patients admitted to a tertiary hospital with AECOPD <sup>a</sup> and compare this with current locally and nationally recognised antibiotic prescribing guidelines and (2) correlate variations in guideline concordant antibiotic prescribing with mean length of stay (LOS) and rates of unplanned readmission to hospital	Retrospective case series	Australia	N=84 patients	Guideline discordant antibiotic therapy leading to increased length of stay	Regular clinical audits Clinical pharmacists should question the indication for IV <sup>a</sup> antibiotics in AECOPD in association with educational campaigns that raise guideline awareness Prescribing restrictions utilising technology and policies

(Continued)

Table 2 (Continued).

Included Studies References	Title	Aims	Methods	Country	Sample Size	Barriers	Solutions/Research Recommendations
28) Au 2013 <sup>46</sup>	Severity of airflow limitation, co-morbidities and management of chronic obstructive pulmonary disease patients acutely admitted to hospital	To assess the disease spectrum, severity of airflow limitation, admission pattern, co-morbidities, and management of patients admitted for acute exacerbations of chronic obstructive pulmonary disease	Retrospective Case series	Hong Kong	N=253 patients	A low prescription rate of long-acting bronchodilators Low utilisation of NIV <sup>a</sup>	Management by a designated multidisciplinary team is recommended COPD patients with hypercapnic respiratory failure are at risk of mortality, and if feasible, should be managed by trained staff in a dedicated team
29) Markun 2017 <sup>33</sup>	Acute exacerbated COPD <sup>3</sup> : room for improvement in key elements of care	Measuring the implementation rates of acute and post-acute hospital care interventions for AECOPD <sup>3</sup>	Retrospective chart review	Switzerland	N=263 patients	Patient education and self-management advice was low to 2% Over prescription of antibiotics Inhaler technique assessment, influenza vaccination/recommendation and referral for pulmonary rehabilitation	Checklists (also called care bundles) are disease management aids supporting clinicians to implement predefined elements of care in individual patients and improve important outcomes such as rehospitalization rates An automatized linkage between an electronic in-hospital AECOPD care bundle and the discharge letter generation might efficiently contribute to communication and comprehensiveness along the chain of care

30) Khialani 2014 <sup>23</sup>	Emergency department management of acute exacerbations of chronic obstructive pulmonary disease and factors associated with hospitalisation	The aim of this study was to identify biomarkers associated with hospitalisation in AECOPD patients and to determine if the ED <sup>a</sup> management was concordant with local COPD <sup>a</sup> guidelines	Retrospective audit	Australia	N= 122 patients	Spirometry was performed in 17% of patients and 28% of patients with hypercapnic respiratory failure received non-invasive ventilation (NIV). Poor understanding of the clinical indications for NIV <sup>a</sup> Limited experience and/or lack of staff education	Scope for improvement in performing spirometry and provision of NIV to eligible patients. Educational initiatives including checklists have been shown to improve adherence to guidelines in the provision of NIV <sup>a</sup> for eligible patients. Further research required to understand why NIV <sup>a</sup> provision is low in ED <sup>a</sup> (both in Australia and worldwide) and measures that need to be undertaken to improve this practice. An alternative to consider for future studies will be to obtain an accurate assessment of smoking history, and to use this information as a proxy measure of spirometry since pack-years of smoking is a surrogate measure of the severity of COPD <sup>a</sup>
31) Meng 2018 <sup>42</sup>	The impact of 2011 and 2017 Global Initiative for Chronic Obstructive Pulmonary Disease (GOLD <sup>a</sup> ) guidelines on allocation and pharmacological management of patients with COPD <sup>a</sup> in Taiwan: Taiwan Obstructive Lung Disease (TOLD) study	Evaluate the evolution of distributions of patients with COPD according to the 2011 and 2017 Global Initiative for Chronic Obstructive Pulmonary Disease (GOLD <sup>a</sup> ) guidelines and to assess the concordance between the prescribed medications and the pharmacological management recommended by the two distinct classification systems in Taiwan	Retrospective audit observational multicentre	Taiwan	N=1053 patients	Overtreatment was unnecessary inhaled corticosteroids and the main cause of undertreatment was a lack of maintenance long-acting bronchodilators	Physicians should make proper adjustments of the prescriptions according to the updated guidelines to ensure the mostly appropriate treatment for COPD <sup>a</sup> patients Promotion of the guidelines might increase the treatment appropriateness and improve the patient outcomes

(Continued)

Table 2 (Continued).

Included Studies References	Title	Aims	Methods	Country	Sample Size	Barriers	Solutions/Research Recommendations
32. Johnson 2013 <sup>31</sup>	Audit of acute exacerbations of chronic obstructive pulmonary disease at Waitemata District Health Board, New Zealand	To examine management and outcome of patients admitted to Waitemata District Health Board (WDHB) with acute exacerbations of chronic obstructive pulmonary disease (AECOPD) and determine performance according to evidence-based guidelines	Retrospective chart review	Australia	N=156 patients	Poor utilisation of non-invasive ventilation (NIV), limited use of ABG and spirometry, and referral to pulmonary rehabilitation (PR). Patients with acute respiratory acidosis did not receive NIV <sup>a</sup> Spirometry non-utilisation Reasons include patient's acute respiratory status or lack of knowledge of availability Lack of knowledge of availability or focus being on acute issues PR poor detection of functional impairment	Improvements in admission/ assessment procedures in particular ABG <sup>a</sup> measurement, use of spirometry and NIV <sup>a</sup> . PR referral, systemic corticosteroid/NRT <sup>a</sup> prescription, judicious antibiotic use, and documentation of performance status. Educational sessions have been held for medical staff to raise awareness of the findings
33. Considine 2011 <sup>66</sup>	Emergency department management of exacerbation of chronic obstructive pulmonary disease: audit of compliance with evidence-based guidelines	The aim of this study was to examine compliance with high level evidence for management of exacerbation of COPD during the first 4 h of ED <sup>a</sup> care	Retrospective audit	Australia	N=273 patients	Only 56.6% of patients in this study received a systemic steroid through either oral or intravenous route Several patients did not receive NIV <sup>a</sup> despite clearly meeting the criteria of acidosis and/or hypercapnia Poor uptake of evidence by clinicians	Compliance with treatment recommendations may be improved if guidelines were more specifically targeted to the process of emergency care rather than detailing specific elements of treatment Further research is warranted to understand better the barriers to implementing evidence-based emergency care for exacerbation of COPD <sup>a</sup> and inform local guidelines, care processes and education programmes.

34. Alsubaei 2017 <sup>39</sup>	COPD care in Saudi Arabia: physicians' awareness and knowledge of guidelines and barriers to implementation	To assess Saudi physicians' awareness and knowledge about chronic obstructive pulmonary disease (COPD <sup>2</sup> ) guideline recommendations	Cross-sectional study	Saudi Arabia	N=44 physicians	Awareness of and adherence to COPD guidelines showed that most physicians were not aware of (61.4%) and did not adhere to (63.6%) any of the COPD guidelines in their practice. Lack of educational material/support' (72.7% of physicians), followed by 'lack of awareness' (70.5%) Low levels of confidence in implementing the GOLD <sup>3</sup> recommendations in them practice	To develop education and other interventions such as system support aiming to improve physicians' knowledge of COPD to enhance self-learning among physicians and increase their level of confidence to apply COPD guidelines
35 Sonstein 2014 <sup>45</sup>	Improving Adherence for Management of Acute Exacerbation of Chronic Obstructive Pulmonary Disease	To assess evidence-based electronic order sets improve compliance with clinical practice guidelines	Pre and post intervention study (Cohort study)	United States	N=420 patients	Only a one third of the patients hospitalized with acute exacerbation of chronic obstructive pulmonary disease (COPD) received ideal care	Health information technology offers a unique opportunity to improve compliance with evidence-based medicine Implementation of clinical practice guidelines into the electronic health record reduced variation in care and corticosteroid use by 50%

(Continued)

Table 2 (Continued).

Included Studies References	Title	Aims	Methods	Country	Sample Size	Barriers	Solutions/Research Recommendations
36. Cousins 2016 <sup>35</sup>	Acute oxygen therapy: a review of prescribing and delivery practices	Identify strategies that have shown promise in facilitating changes to oxygen prescription and delivery practice	Review	Australia	N=17 studies	<p>Insufficient training and education for medical and nursing staff</p> <p>Lack of familiarity with oxygen delivery devices</p> <p>Lack of understanding of the effects, role and dangers of oxygen therapy</p> <p>Staff time constraints</p> <p>Necessity to maintain SpO<sub>2</sub> –94% due to the “between the flags” track and trigger observations charts</p> <p>Practical issues related to space and place for prescribing oxygen</p> <p>Difficulties with changing long established behavior</p> <p>Patients transferred from other wards/ departments with oxygen therapy</p> <p>Lack of enthusiasm by senior clinical staff</p> <p>Communication difficulties between doctors and nurses</p> <p>Lack of full-time staff or staff turnover</p>	<p>Introduction of oxygen alert stickers</p> <p>Dedicated oxygen order chart</p> <p>Clearly delineated section on the drug chart or changes to the drug chart to include space for the transcription of oxygen orders</p> <p>Informational posters</p> <p>Email notification/dissemination of information</p> <p>Educational session across various clinical specialities and at various key times</p> <p>Nurse facilitated reminder system</p> <p>Development of hospital guidelines/policy to guide Practice</p> <p>Admission bundle with electronic prescribing system</p> <p>Message alerts on computer login screens</p>



37. Cousins 2020 <sup>21</sup>	Management of acute COPD exacerbations in Australia: do we follow the guidelines	To assess adherence to the Australian national guideline (COPD-X) against audited practice, and to document the outcomes of patients hospitalised with an acute exacerbation of chronic obstructive pulmonary disease (COPD) at discharge and 28 days after	Retrospective case audit	Australia	N=171 patients	<p>Spirometry was performed in only 22.7% of admissions</p> <p>Patients with no change in the sputum color (85.7%) or volume (84.9%) were also prescribed antibiotics</p> <p>Reasons for not using non-invasive ventilation (NIV) or invasive ventilation included a documented decision not to escalate to NIV or invasive ventilation (18.2%), "patient responded to medical therapy" (45.6%) and in 36.4%, no reason was listed</p> <p>Referral to pulmonary rehabilitation was low in most centers (mean 32.4%)</p> <p>Lack of spirometry performed during the admission increased the odds of 28-day readmission</p> <p>COPD-X argues that "even the sickest of patients can perform an FEV1<sup>a</sup> manoeuvre" the GOLD guidelines do not routinely recommend that sick patients perform spirometry. It is also important to consider the practicality or capacity of emergency department staff to obtain acceptable spirometry traces</p> <p>NIV<sup>a</sup> is underutilised.</p> <p>Referral to pulmonary rehabilitation programs is very low</p>	Clinical Care Bundles
--------------------------------	--	---	--------------------------	-----------	----------------	---	-----------------------

**Abbreviations:** <sup>a</sup>COPD, chronic obstructive pulmonary disease; ACP, advanced care planning; N, number of; UK, United Kingdom; GOLD, Global Initiative Obstructive Lung Disease; IV, intravenous; RF, respiratory failure; RCNS, respiratory nurse specialist; AUDIPOC, AECOPD (acute exacerbation of COPD); NIV, non-invasive ventilation; ABG, arterial blood gas; GMP, general medicine practitioners; RS, respiratory specialist; SABA, short-acting beta-agonists; LABA, long-acting beta agonist bronchodilators; ICS, inhaled corticosteroids; CP, care pathway; VBG, venous blood gas; FEV1, forced expiratory volume; CME, continuing medical education; LOS, length of stay; PR, pulmonary rehabilitation; NRT, nicotine replacement therapy.

respiratory ward-based COPD clinical pathways and atomistic acute ED clinical pathways generally due to the difference in care focus, time constraints, national targets, and lack of human and fiscal resources such as beds, clinicians, staff, and high patient turnover (*environmental context and resources*).<sup>11,15,23,40</sup> Targeted speciality care order sets specifically designed for departmental needs and care focus such as in the ED is highly recommended for implementation.<sup>11,15,41</sup>

## Pharmacological Management

Guidelines suggest accurate pharmacological therapy will optimise function, prevent deterioration, prevent exacerbations and sustain pulmonary function.<sup>8</sup> Misalignment of prescribing with GOLD recommendations between respiratory physicians and general physicians was identified as being due to a lack of interspeciality communication and guidance amongst clinicians. This was one of the major barriers reported with COPD pharmacological management (*social/professional role and identity*).<sup>36</sup>

## Corticosteroids Guidelines Non-adherence and Potential Solutions

Multiple studies have reported on variability in duration, dosing and inconsistency from guidelines with corticosteroids management (*behavioural regulation*).<sup>10,11,18,30,37,38,42,43</sup> Systemic corticosteroid regimens used in clinical practice are administered for much longer periods and at higher doses than recommended in guidelines (*knowledge*).<sup>10,11,17,25,31–34</sup> Steroid doses relevant to an asthma diagnosis and treatment are utilised to treat for COPD (*knowledge*).<sup>37</sup> Despite the evidence, oral steroids are not inferior to intravenous steroids, with dose duration tripled from the recommended 5 days in practice (*knowledge*).<sup>44</sup> Use of steroids without indication or overtreatment with ICS inhalers have been reported from multiple studies leading to longer hospital length of stay and mortality.<sup>10,30,37,42</sup> Approximately half of the COPD readmissions in an inpatient urban teaching hospital study in the United States did not receive steroids during their first admission.<sup>18</sup> Lack of awareness and knowledge of guidelines were reported to be a firm barrier to steroid prescription non-adherence (*knowledge*).<sup>9,10,38,42,44</sup> Interactive educational tools and clinical champions have appeared to provide an increase in pharmacological adherence by increasing awareness of the guidelines.<sup>38,45</sup>

## Bronchodilators and Antibiotics Guidelines Non-adherence and Potential Solutions

Two studies, one Australian and one from Hong Kong, reported differences in prescription of long-acting bronchodilators (LABA) between general physicians and respiratory physicians despite guideline instructions (*Social/professional role and identity*).<sup>36,46</sup> Inappropriate prophylactic antibiotic prescription despite normal white cell count is a concern with antimicrobial resistance an issue worldwide (*Knowledge, behavioural regulation*).<sup>10,22,33,38,43,47</sup> Dual antibiotic therapy choice discordant from current guidelines was observed in 90% of patients in another Australian study.<sup>48</sup> Discordant duration of antibiotic therapy and failure to switch to oral antibiotics have been linked with an increased length of hospital stay (*Knowledge*).<sup>48</sup> The availability of a wide range of inhaler devices, coupled with a lack of patient education and checking of inhaler technique was noted as a major barrier potentially contributing to COPD exacerbations (*Knowledge and skills*).<sup>15,49</sup> Lack of knowledge of updated guidelines and memory, attention or decision processes merged with environmental barriers such as low staffing, and time constraints contributed hugely to inaccurate pharmacological management. Dedicated AECOPD pathways may improve antibiotic or other drug selection and help to uplift pharmacological concordance with guidelines.<sup>47</sup> Easier to use devices and educational strategies on proper inhaler use from health caregivers can reduce readmissions.<sup>42</sup>

## Barriers and Potential Solutions for Increasing Pharmacological Guidelines Adherence

Respiratory specialists and nurses adhered to pharmacological guidelines more accurately over internists (*Social/professional role and identity*).<sup>36,50</sup> Cross fertilization of knowledge across departments and interdisciplinary clinicians assists with consistently delivering pharmacological management to provide evidence-based care in the most efficient manner.<sup>36</sup> The development and validation of appropriate educational tools for inhaler techniques is necessary to assist clinicians and other health-care professionals who are involved in selecting inhalation devices.<sup>14,38</sup> Given the wide range of inhaler devices available, inhaler prescription, technique and adherence are not checked or educated on well by interdisciplinary staff (*Behavioural regulation*).<sup>32,34,36,38,42</sup> Dedicated and holistic bundles of care for AECOPD have been implemented in the United Kingdom and have been

demonstrated to improve patient management.<sup>24</sup> Training, modeling and enablement utilising education and other interventions to enhance self-learning among physicians was recommended and included strategies such as informational posters, and hospital guidelines with updated evidence. Educating clinicians regarding the indications and contraindication for corticosteroids and antibiotics including encouragement to prescribe according to the guidelines or standardizing prescriptions utilising electronic formats is a potential solution recommended by multiple studies.<sup>10,12,41</sup> Ambiguity, disagreement or when individual clinicians see the guideline as an interference in her/his freedom of clinical judgement is reported as a barrier (*Social/professional role and identity*).<sup>38</sup> Motivation with education, incentivisation post guideline adherence audits and environmental enablement utilising point of care resources may mitigate this phenomenon.<sup>25</sup> Change champions and senior leadership to discuss and influence total staff behaviour is reported to have assisted with this barrier in some implementation studies.<sup>51</sup>

## Non-Pharmacological Management

Non-pharmacological management includes pulmonary rehabilitation, smoking cessation, immunisations, self-management plans, COPD action plans, palliative care, and mental health assessment. GOLD and COPD-X guidelines recommend all patients with COPD after an acute exacerbation should have a referral for pulmonary rehabilitation within 2–3 weeks.<sup>8</sup> Major barriers were identified that included suboptimal understanding of COPD non-pharmacological recommendations, lack of perceived treatment benefit, along with ambiguity on self-efficacy and time constraints (*knowledge, environmental and context resources*).<sup>19,27,33,36</sup>

## Pulmonary Rehabilitation Barriers and Potential Solutions

In studies surrounding guidelines adherence evidence shows very low pulmonary rehabilitation referrals after a COPD exacerbation (*Behavioural regulation*).<sup>10,11,20,31,33,42</sup> Referral rates to pulmonary rehabilitation have reportedly increased from 13.6% to 68% with implementation of a COPD care bundle reported from a pre- and post-intervention study conducted in one Ireland inpatient unit.<sup>20</sup> Lack of knowledge of benefits, updated knowledge (in reference to publishing years), knowledge of existing community resources, and lack of patient education regarding attendance of these programs were identified as major barriers

(*Knowledge*). These knowledge deficits are identified as particular barriers for non-respiratory physicians (*Knowledge*).<sup>20,38,52</sup> Some other barriers include lower support for rehabilitation at multiple levels such as time constraints, difficult referral process, lack of staffing resources, infrastructure, and lack of clarity on who provides the referral (*Environmental and Context resources, Social/professional role identity*).<sup>25,36</sup> Well-structured screening protocols or program-based multimodality COPD care services are highly recommended for development to address identified barriers.<sup>12</sup> Political commitment, sustained funding, and establishment of a pulmonary rehabilitation unit were found to be of the utmost importance for Nigerian and possibly other developing COPD populations.<sup>2,29</sup> Recommendations of referral to rehabilitation professionals included making lengthier commitments to rehabilitation, facilitating more activity by motivating and encouraging patients with COPD, and reducing their fears and reinforcing the benefits of lifelong activity.<sup>20,52</sup>

## Smoking Cessation, Inhaler Technique, Immunisation and Vaccination Guidelines Non-adherence and Potential Solutions

Smoking cessation and immunisation are highly recommended and significant in preventing COPD exacerbation and preserving lung function. A general staff perception acting as a barrier concluded these to be the responsibility of the primary care physician, hence a lack of addressing this problem during an acute admission is reported in two studies (*Social/professional role and identity*).<sup>20,52</sup> Lack of prevention of future exacerbations with particular attention to smoking cessation, immunisation, knowledge of current therapy including inhaler technique and self-management is reportedly low (*Knowledge*).<sup>29,33,34,52</sup> Minimal support is provided to implement smoking cessation in public hospitals with human resources, staffing, smoking cessation teams/champions, telephone support, and a lack of role clarity in terms of initiating the cessation education (*Environmental and Context resources, Social/professional role identity*).<sup>10,29,34,52</sup> In Ireland implementation of a care bundle and care pathway improved referral for smoking cessation assistance from 18.2% to 100% and significantly lowered the 30-day readmission rates.<sup>20,34,53</sup> Care bundle implementation strategies may be adopted by national and international health systems to improve smoking cessation. Multifaceted implementation programs

including patient pamphlets, brochures, electronic learning modules, and electronic reminders at point of clinical practice have proven successful.<sup>12</sup> Vaccination provision records are lower in summer months compared with winter admissions and unvaccinated patients were not vaccinated in the acute setting.<sup>18</sup> Time- and resource-poor clinicians often overlook vaccination as a primary care physician responsibility and trust this will be completed in the community setting (*Social/professional role and identity, Environmental and Context resources*).<sup>10,20,33,54,55</sup> Affordability of vaccines in developing countries was identified as a barrier (*Environmental and Context resources*).<sup>29</sup>

Enablers identified were that physicians should collaborate with hospital authorities to establish smoking cessation teams, vaccination change champions and pulmonary rehabilitation units.<sup>56</sup> Difficulty remembering the most up to date guidelines or recalling all delivery devices and management modality from COPD guidelines (*Memory attention and decision-making process*) was problematic and presented as a barrier.<sup>12,41,57</sup> Environmental restructuring, enablement, and education initiated with Point of Care checklists in respiratory wards have improved guideline adherence.<sup>12,24,41</sup> Health professional education, decision-making algorithms (including electronic systems), reminders at the time of consultation, and continuous quality assurance programs with admission/ discharge bundles using electronic prescribing systems are recommended strategies to add consistency and reduce error or non-conformance.<sup>12,18,24,58</sup>

## Anxiety/ Depression Screening and Palliative Care Guidelines Non-adherence and Potential Solutions

Barriers in screening and pharmacological treatment for clinically confirmed depression were documented as not being part of routine care, albeit this was not measured by many studies that reported on non-adherence of COPD clinical guidelines (*Behavioral regulation*).<sup>41</sup> The prevalence of clinical depression in patients with COPD varies from 18% to 80%, yet this aspect is not screened regularly with AECOPD.<sup>59</sup> Palliative care and care planning in advanced COPD remain discordant largely due to difficulty in prognosis of the disease due to variable disease trajectories (*Behavioral regulation, Social/professional role and identity*).<sup>60</sup> Care is reported to be fragmented, episodic and reactive and

the role of carers were poorly recognised in end stage COPD (*Knowledge and Behavioral regulation*).<sup>61,62</sup> Respiratory doctors initiating palliative care conversations, and with subsequent referral to palliative care clinicians and integrating multidisciplinary services could address fragmented care, however more work is required in this space (*Social/professional role and identity*).<sup>62</sup> Clinicians lacking time, fearful of taking away patient hope, lack of palliative specialist availability, insufficient communication and collaboration, poor access and lack of service availability are major barriers to COPD adherence (*Environmental and context resources*).<sup>60,62–65</sup> COPD action plans reduce hospitalisations and are recommended as part of COPD self-management plans.<sup>8</sup> Patients often receive minimal to no education on acute discharge from inpatient units. More work is required in this space (*Knowledge and Behavioural regulation*).<sup>66</sup> Recommendations that require patient education and team collaboration are the ones particularly discordant with current guidelines (*Knowledge*).<sup>33,34,49</sup> Lack of mental health assessments and palliative care significant and clinically appropriate awareness strategies aligned with poorly controlled COPD patient outcomes presented as major barriers (*Social/professional role and identity, Behavioral regulation*).

## Potential Solutions to Improve Guidelines Adherence with Non-Pharmacological Management

Targeted health professional education, electronic checklists, user friendly and easy access resources, improvised communication between primary care physicians, educational campaigns, hospital staff audit and educational sessions presented in many studies were specifically related to improving concordance in health-care settings.<sup>11,12,23,32–34,38,47–49,52,54,58,66</sup> Care bundles have resulted in reduced readmissions for COPD and increased adherence to guidelines by improving referrals for inhaler technique (59.1% to 91.2%) and smoking cessation (13.6% to 68%).<sup>20</sup> Referral rates to pulmonary rehabilitation rose higher and similar improvements were seen in the administration of self-management plans.<sup>20</sup> Communication between Guideline Committees and Clinicians should be improved and variability in resources and organisation of hospitals, patient characteristics, process of care, and outcomes needs to be addressed.<sup>54</sup>

## Discussion

Multidimensional barriers have evidently contributed to global COPD guideline non-concordance. Research repetitively reports a lack of awareness, knowledge and skills being the significant challenges demonstrating guidelines are not well disseminated or implemented in clinical practice. Major barriers are reported as a lack of awareness, lack of considering the complexity of the guideline, high turnover of patients and the involvement of inter disciplines. Mitigating strategies include providing guideline resources at point of care electronically. Diagnostic and pharmacological management are mostly well adhered to compared to non-pharmacological management (self-management education, COPD action plans, smoking cessation, pulmonary rehabilitation, palliative care, inhaler adherence and technique, home oxygen, immunisation). Non-pharmacological management seeks to provide better implementation strategies to enhance guideline concordance. Strategic implementation for interdisciplinary communication and cross fertilisation of knowledge is recommended by researchers for decades and yet globally literature is still reporting non-adherence. This review provides the inclusion of multifaceted implementation strategies for targeted implementation of COPD guidelines for national and international clinical settings compiled from research evidence and utilising the TDF implementation framework. Motivation using environmental restructuring, increasing education, and disseminating guidelines in the working area or utilising suitable implementation strategies is highly associated with improving guideline adherence rates.

This study collated all barriers and probable solutions, and recommends multiple strategies that may be adopted by stakeholders with suitability to local or national needs (see Table 3). A significant recommendation from this study arising from frequency scores and the implementation framework is to install the proforma ideally in an electronic format in acute care settings from hospital (triage to discharge) to primary care. Concurrent studies and reviews have similar findings and recommend electronic or pre-formatted order sets to improve guideline adherence in Australia.<sup>10–12,18,20,33,47,54</sup> This implementation strategy appears to be capable of addressing almost all barriers (see Table 3). The electronic proforma will provide easy access, increase knowledge and awareness, provide role clarity, time efficiency, and provide all resources

in one place with self-learning resources. Other advantages include consistent pharmacological and non-pharmacological standardisation of management, provision of patient information or self-management resources, electronic referrals, data for future research, practicability, interdisciplinary acceptability, easier access to community services, automation of processes, discharge planning with primary care, and clinical behavior regulation. Future potential of such digital proforma with access to primary care records with read and write access will alleviate communication issues between primary care and speciality clinicians. Potential digital proforma can target fragmented care elements to initiate a new implementation strategy, with the capacity to liaise with a community pharmacist, nurses and other interdisciplinary staff from the hospital to reduce or avoid long hospital stays. Educating and self-learning opportunity is available with this strategy of implementation in the case of an interdisciplinary clinician requiring education resources to be provided to patients or staff. Proforma aided COPD management in concordance to guidelines significantly improved the standards of care in COPD patients especially among junior doctors.<sup>57</sup> ED short stay unit pathways and access to community follow-up care with primary care or specialist clinics, and disease-specific outreach services is recommended.<sup>17</sup> Guidelines specifically targeted to the process of emergency care may be more meaningful to ED clinicians, however further research is warranted to understand best implementation strategies for the Emergency department.<sup>11,67</sup>

## Strengths and Limitations

This mixed method systematic review explored both qualitative and quantitative studies to deeply comprehend barriers to interdisciplinary staff guideline adherence. The Theoretical Domains Framework (TDF) utilisation facilitates understanding of existing barriers and probable clinical behaviour change solutions to improve concordance. Interdisciplinary perspectives to improve collaboration and concordance may lead to multifaceted implementation strategies. Due to the wide gap and the different focus of studies only three domains were identified from the TDF. Paucity of existing good quality data and reporting may confine our ability to report true barriers of concordance.

## Conclusion

Barriers and potential solutions were identified for most clinical recommendations from the guidelines. The

**Table 3** Summary Table on Electronic Proforma's Ability to Address the Identified Barriers

Summary of Barriers	E-ICP Capability to Address the Barriers
Lack of knowledge or awareness	<ul style="list-style-type: none"> <li>• E-ICP<sup>a</sup> will provide COPD<sup>a</sup> guidelines for interdisciplinary staff at point of care</li> <li>• Self-learning resources</li> </ul>
Lack of skills	<ul style="list-style-type: none"> <li>• Integrating latest videos from lung foundation Australia to educate staff on inhaler techniques</li> <li>• Provision of digital learning resources</li> <li>• Despite previous qualification and lack of respiratory experience interdisciplinary staff will have access to clinical guidelines and e-learning resources</li> </ul>
Professional role identity	<ul style="list-style-type: none"> <li>• Electronic one touch, direct referrals that reaches primary care /inpatient/outpatient facilities from ED<sup>a</sup></li> </ul>
Ambiguity in management of guidelines	<ul style="list-style-type: none"> <li>• Evidence based and speciality based advice can be integrated for reassurance</li> </ul>
Poor pharmacological prescription	<ul style="list-style-type: none"> <li>• Consistent pharmacological prescription with guideline could be utilised through electronic proforma</li> </ul>
Time constraints	<ul style="list-style-type: none"> <li>• Easier outpatient referrals through electronic referrals</li> <li>• Convenience and easy access encourage interdisciplinary staff</li> </ul>
Interdisciplinary communication	<ul style="list-style-type: none"> <li>• Direct and faster inter departmental referrals</li> </ul>
Smoking cessation	<ul style="list-style-type: none"> <li>• Smoking cessation patient resources (pamphlet, websites)</li> </ul>
Pulmonary rehabilitation	<ul style="list-style-type: none"> <li>• Direct referrals or patient resources to book online</li> </ul>
Environmental barriers	<ul style="list-style-type: none"> <li>• Changing to easier electronic referrals will require lesser staffing resources</li> <li>• Time efficient and user-friendly</li> <li>• Addresses difficulty recalling every guideline</li> <li>• Convenience of implementation using I-EMR<sup>a</sup></li> </ul>
Fragmented care	<ul style="list-style-type: none"> <li>• Most of the care fragmentation occurs during discharge from hospitals to primary care. Direct referrals from hospitals to primary care community units (pulmonary rehabilitation) will allow clinicians to monitor where the care falls and target this area for future evaluation and implementation to improve concordance</li> </ul>

**Abbreviations:** <sup>a</sup>E-ICP, electronic integrated care proforma; COPD, chronic obstructive pulmonary disease; ED, emergency department; I-EMR, integrated electronic medical records.

utilisation of the TDF implementation framework suggests electronic order sets/ proforma with guideline resources at point of care and easily accessible digital community referrals. This enables targeted recommendations to both pharmacological and non-pharmacological management that reverberates solutions to improve concordance. Various other implementation strategies are also recommended in this study for developing countries where digitalising is not an immediate option. Care bundles and clinical champions have proven to be effective in Europe and Australia. Stakeholders will have the opportunity to compare, analyse and conduct feasibility studies of different approaches recommended in this study that may be suitable for their settings.

## Abbreviations

COPD, chronic obstructive pulmonary disease; TDF, theoretical domains framework; E-ICP, electronic integrated COPD proforma; HRQoL, health-related quality of life; JBI, Joanna Briggs Institute; GOLD, Global Initiative for Obstructive Lung Disease; COPD-X plan, chronic obstructive pulmonary disease-X plan; ABG, arterial blood gas; NIV, non-invasive ventilation; ED, emergency department; LABA, long-acting bronchodilators; AECOPD, acute exacerbation of chronic obstructive pulmonary disease.

## Patient and Public Involvement

No patients from the included studies were involved in this review.

## Ethics and Dissemination

Ethics approval is not required for this study as all data were obtained from publicly available studies. Knowledge and interpretations from this review will provide recommendations towards prominent implementation strategies to increase COPD guideline concordance. The results of this study will be presented before industry stakeholders, interdisciplinary clinicians, and appropriate future conferences to develop and assist with implementation initiatives.

## Acknowledgments

We acknowledge Professor Sonya Osborne for her valuable input and expertise during University of Southern Queensland writing retreats. We acknowledge expertise of the University of Southern Queensland, Health Sciences Librarian, Rowena McGregor for assistance during the preliminary search phase.

## Author Contributions

All authors made a significant contribution to the work reported, whether that is in the conception, study design, execution, acquisition of data, analysis and interpretation, or in all these areas; took part in drafting, revising or critically reviewing the article; gave final approval of the version to be published; have agreed on the journal to which the article has been submitted; and agree to be accountable for all aspects of the work.

## Disclosure

The authors report no Competing interests related to this work.

## References

1. Quaderi S, Hurst J. The unmet global burden of COPD. *Glob Health Epidemiol Genom.* 2018;3. doi:10.1017/ghg.2018.1
2. World Health Organisation. WHO global health estimates: the top 10 causes of death; 2020.
3. The Australian Lung Foundation. COPD: the statistics, The Australian Lung Foundation; 2016.
4. Australian Institute of Health and Welfare. Chronic obstructive pulmonary disease; 2017. Available from: <https://www.aihw.gov.au/reports/chronic-respiratory-conditions/copd/contents/treatment-management>. Accessed December 16, 2021.
5. British Lung Foundation. Deaths from COPD; 2012. Available from: <https://statistics.blf.org.uk/copd>. Accessed December 16, 2021.
6. May SM, Li JTC. Burden of chronic obstructive pulmonary disease: healthcare costs and beyond. In: *Allergy and Asthma Proceedings*. OceanSide Publications; 2015.
7. Mathers CD, Loncar D. Projections of global mortality and burden of disease from 2002 to 2030. World Health Organisation. *PLoS Med.* 2006;3:209–224.
8. Yang IA, George J, Jenkins S. The COPD-X Plan: Australian and New Zealand Guidelines for the management of chronic obstructive pulmonary disease 2018; 2018.
9. Ruth Hadfield MH. Global strategy for the diagnosis, management, and prevention of chronic obstructive pulmonary disease 2019 report. Ruth Hadfield MH, ed; 2019.
10. Sha J, Worsnop CJ, Leaver BA, et al. Hospitalised exacerbations of chronic obstructive pulmonary disease: adherence to guideline recommendations in an Australian teaching hospital. *Intern Med J.* 2019;50:453–459.
11. Kelly AM, Van Meer O, Keijzers G, et al. Get with the guidelines - management of COPD in EDs in Europe and Australasia is sub-optimal. *Intern Med J.* 2019. doi:10.1111/imj.14323
12. Overington JD, Huang YC, Abramson MJ, et al. Implementing clinical guidelines for chronic obstructive pulmonary disease: barriers and solutions. *J Thorac Dis.* 2014;6(11):1586–1596. doi:10.3978/j.issn.2072-1439.2014.11.25
13. Kruijs AL, Smidt N, Assendelft WJ, et al. Integrated disease management interventions for patients with chronic obstructive pulmonary disease. *Cochrane Database Syst Rev.* 2013. doi:10.1002/14651858.CD009437.pub2
14. Issac H, Moloney C, Taylor M, et al. Protocol: mapping of modifiable barriers and facilitators with interdisciplinary chronic obstructive pulmonary disease (COPD) guidelines concordance within hospitals to the theoretical domains framework: a mixed methods systematic review protocol. *BMJ Open.* 2020;10(7):e036060. doi:10.1136/bmjopen-2019-036060
15. Hancy Issac MT, Moloney C, Lea J. Exploring factors contributing to Chronic Obstructive Pulmonary Disease (COPD) guideline non-adherence and potential solutions in the emergency department: interdisciplinary staff perspective. *J Multidiscip Healthc.* 2021;14:767. doi:10.2147/JMDH.S276702
16. Légaré F, Ratté S, Gravel K, et al. Barriers and facilitators to implementing shared decision-making in clinical practice: update of a systematic review of health professionals' perceptions. *Patient Educ Couns.* 2008;73(3):526–535. doi:10.1016/j.pec.2008.07.018
17. Francke AL, Smit MC, de Veer AJ, et al. Factors influencing the implementation of clinical guidelines for health care professionals: a systematic meta-review. *BMC Med Inform Decis Mak.* 2008;8(1):1–11. doi:10.1186/1472-6947-8-38
18. Lipari M, Smith AL, Kale-Pradhan PB, et al. Adherence to GOLD guidelines in the inpatient COPD population. *J Pharm Pract.* 2018;31(1):29–33. doi:10.1177/0897190017696949
19. Menzella F, Facciolo N, Lusuardi M, et al. Clinical audit on diagnostic accuracy and management of respiratory failure in COPD. *Respir Care.* 2012;57(12):2067–2073. doi:10.4187/respcare.01502
20. Migone C, O'Connor M, Kelly E, et al. Patients hospitalised with an acute exacerbation of COPD: is there a need for a discharge bundle of care? *Ir Med J.* 2015;108(9):273–275.
21. Cousins JL, Wood-Baker R, Wark PAB, et al. Management of acute COPD exacerbations in Australia: do we follow the guidelines? *ERJ Open Res.* 2020;6(2):00270–2019. doi:10.1183/23120541.00270-2019
22. Roberts CM, Lopez-Campos JL, Pozo-Rodriguez F, et al. European hospital adherence to GOLD recommendations for chronic obstructive pulmonary disease (COPD) exacerbation admissions. *Thorax.* 2013;68(12):1169–1171. doi:10.1136/thoraxjnl-2013-203465
23. Khialani B, Sivakumaran P, Keijzers G, et al. Emergency department management of acute exacerbations of chronic obstructive pulmonary disease and factors associated with hospitalization. *J Res Med Sci.* 2014;19(4):297–303.
24. McCarthy C, Brennan J, Brown L, et al. Use of a care bundle in the emergency department for acute exacerbations of chronic obstructive pulmonary disease: a feasibility study. *Int J Chron Obstruct Pulmon Dis.* 2013;8:605. doi:10.2147/COPD.S252883

25. Michie S, Atkins L, West R. *The Behaviour Change Wheel. A Guide to Designing Interventions*. 1st ed. Great Britain: Silverback Publishing; 2014:1003–1010.
26. Atkins L, Francis J, Islam R, et al. A guide to using the Theoretical Domains Framework of behaviour change to investigate implementation problems. *Implement Sci*. 2017;12(1):1–18. doi:10.1186/s13012-017-0605-9
27. Michie S, Richardson M, Johnston M, et al. The behavior change technique taxonomy (v1) of 93 hierarchically clustered techniques: building an international consensus for the reporting of behavior change interventions. *Ann Behav Med*. 2013;46(1):81–95. doi:10.1007/s12160-013-9486-6
28. Stern C, Lizarondo L, Carrier J, et al. Methodological guidance for the conduct of mixed methods systematic reviews. *JBI Evid Synth*. 2020;18(10):2108–2118. doi:10.11124/JBISIR-D-19-00169
29. Desalu OO, Onyedum CC, Adeoti AO, et al. Guideline-based COPD management in a resource-limited setting—physicians' understanding, adherence and barriers: a cross-sectional survey of internal and family medicine hospital-based physicians in Nigeria. *Prim Care Res J*. 2013;22(1):79–85. doi:10.4104/pcrj.2013.00014
30. Kim T-O, Shin H-J, Kim Y-I, et al. Adherence to the GOLD guideline in COPD management of South Korea: findings from KOCOSS study 2011–2018. *Chonnam Med J*. 2019;55(1):47–53. doi:10.4068/cmj.2019.55.1.47
31. Johnson C, Connolly MJ, Clover S, et al. Audit of acute exacerbations of chronic obstructive pulmonary disease at Waitemata District Health Board, New Zealand. *New Zealand Med J*. 2013;126(1378):15–25.
32. Susanto C, Thomas PS. Assessing the use of initial oxygen therapy in chronic obstructive pulmonary disease patients: a retrospective audit of pre-hospital and hospital emergency management. *Intern Med J*. 2015;45(5):510–516. doi:10.1111/imj.12727
33. Markun S, Franzen DP, Dalla Lana K, et al. Acute exacerbated COPD: room for improvement in key elements of care. *Int J Chron Obstruct Pulmon Dis*. 2017;12:2969. doi:10.2147/COPD.S145496
34. Vanhaecht K, Lodewijckx C, Sermeus W, et al. Impact of a care pathway for COPD on adherence to guidelines and hospital readmission: a cluster randomized trial. *Int J Chron Obstruct Pulmon Dis*. 2016;11:2897. doi:10.2147/COPD.S119849
35. Cousins JL, Wark PA, McDonald VM. Acute oxygen therapy: a review of prescribing and delivery practices. *Int J Chron Obstruct Pulmon Dis*. 2016;11:1067. doi:10.2147/COPD.S103607
36. Wijayaratne K, Sivakumaran P, Wijayaratne K, et al. Differences in care between general medicine and respiratory specialists in the management of patients hospitalized for acute exacerbations of chronic obstructive pulmonary disease. *Ann Thorac Med*. 2013;8(4):197–203. doi:10.4103/1817-1737.118499
37. Harrison A, Borg B, Thompson B, et al. Inappropriate inhaled corticosteroid prescribing in chronic obstructive pulmonary disease patients. *Intern Med J*. 2017;47(11):1310–1313. doi:10.1111/imj.13611
38. Tang CY, Taylor NF, McDonald CF, et al. Level of adherence to the GOLD strategy document for management of patients admitted to hospital with an acute exacerbation of COPD. *Respirology*. 2014;19(8):1191–1197. doi:10.1111/resp.12361
39. Alsubaie M, Frith PA, Cafarella PA, et al. COPD care in Saudi Arabia: physicians' awareness and knowledge of guidelines and barriers to implementation. *Int J Tuberc Respir Dis*. 2017;21(5):592–595. doi:10.5588/ijtld.16.0656
40. Sneath E, Bunting D, Hazell W, et al. Pre-hospital and emergency department pathways of care for exacerbations of chronic obstructive pulmonary disease (COPD). *J Thorac Dis*. 2019;11(Suppl 17):S2221. doi:10.21037/jtd.2019.10.37
41. Gerber A, Moynihan C, Klim S, et al. Compliance with a COPD bundle of care in an Australian emergency department: a cohort study. *Clin Respir J*. 2018;12(2):706–711. doi:10.1111/crj.12583
42. Hsieh M-J, Huang S-Y, Yang T-M, et al. The impact of 2011 and 2017 Global Initiative for Chronic Obstructive Pulmonary Disease (GOLD) guidelines on allocation and pharmacological management of patients with COPD in Taiwan: Taiwan Obstructive Lung Disease (TOLD) study. *Int J Chron Obstruct Pulmon Dis*. 2018;13:2949. doi:10.2147/COPD.S176065
43. Ta M, George J. Management of chronic obstructive pulmonary disease in Australia after the publication of national guidelines. *Intern Med J*. 2011;41(3):263–270. doi:10.1111/j.1445-5994.2009.02133.x
44. Marcos PJ, Nieto-Codesido I, de Jorge Dominguez-Pazos S, et al. Treatment with systemic steroids in severe chronic obstructive pulmonary disease exacerbations: use of short regimens in routine clinical practice and their impact on hospital stay. *Archivos de Bronconeumologia*. 2017;53(11):611–615. doi:10.1016/j.arbr.2017.09.007
45. Sonstein L, Clark C, Seidensticker S, et al. Improving adherence for management of acute exacerbation of chronic obstructive pulmonary disease. *Am J Med*. 2014;127(11):1097–1104. doi:10.1016/j.amjmed.2014.05.033
46. Au LH, Chan HS. Severity of airflow limitation, co-morbidities and management of chronic obstructive pulmonary disease patients acutely admitted to hospital. *Hong Kong Med J*. 2013;19(6):498–503. doi:10.12809/hkmj133909
47. Brownridge D, Zaidi S. Retrospective audit of antimicrobial prescribing practices for acute exacerbations of chronic obstructive pulmonary diseases in a large regional hospital. *J Clin Pharm Ther*. 2017;42(3):301–305. doi:10.1111/jcpt.12514
48. Fanning M, McKean M, Seymour K, et al. Adherence to guideline-based antibiotic treatment for acute exacerbations of chronic obstructive pulmonary disease in an Australian tertiary hospital. *Intern Med J*. 2014;44(9):903–910. doi:10.1111/imj.12516
49. Melani AS, Paleari D. Maintaining control of chronic obstructive airway disease: adherence to inhaled therapy and risks and benefits of switching devices. *COPD*. 2016;13(2):241–250. doi:10.3109/15412555.2015.1045972
50. Sandhu SK, Chu J, Yurkovich M, et al. Variations in the management of acute exacerbations of chronic obstructive pulmonary disease. *Can Respir J*. 2013;20(3):175–179. doi:10.1155/2013/501038
51. Goedken CC, Livorsi DJ, Sauder M, et al. “The role as a champion is to not only monitor but to speak out and to educate”: the contradictory roles of hand hygiene champions. *Implement Sci*. 2019;14(1):1–11. doi:10.1186/s13012-019-0943-x
52. Preto JJ, McDonald VM, Wark PAB, et al. Multicentre audit of inpatient management of acute exacerbations of chronic obstructive pulmonary disease: comparison with clinical guidelines. *Intern Med J*. 2012;42(4):380–387. doi:10.1111/j.1445-5994.2011.02475.x
53. Seys D, Bruyneel L, Sermeus W, et al. Teamwork and adherence to recommendations explain the effect of a care pathway on reduced 30-day readmission for patients with a COPD exacerbation. *COPD*. 2018;15(2):157–164. doi:10.1080/15412555.2018.1434137
54. Pozo-Rodríguez F, López-Campos JL, Álvarez-Martínez CJ, et al. Clinical audit of COPD patients requiring hospital admissions in Spain: AUDIPOC study. *PLoS One*. 2012;7(7):e42156. doi:10.1371/journal.pone.0042156
55. Jouleh B, Erdal M, Eagan TM, et al. Guideline adherence in hospital recruited and population based COPD patients. *BMC Pulm Med*. 2018;18(1):1–9. doi:10.1186/s12890-018-0756-8
56. Desalu OO, Onyedum CC, Adeoti AO, et al. Unmet needs in asthma treatment in a resource-limited setting: findings from the survey of adult asthma patients and their physicians in Nigeria. *Pan Afr Med J*. 2013;16:1–13. doi:10.11604/pamj.2013.16.20.2798
57. Sen B, Woollard M, Desira NL. Does the introduction of a COPD pro-forma improve the standards of care delivered by junior doctors in the emergency department. *COPD*. 2010;7(3):199–203. doi:10.3109/15412555.2010.481699



58. Masoompour SM, Mohammadi A, Mahdaviyazad H. Adherence to the Global Initiative for Chronic Obstructive Lung Disease guidelines for management of COPD: a hospital-base study. *Clin Respir J*. 2016;10(3):298–302. doi:10.1111/crj.12215
59. Pumar IM, Gray CR, Walsh RJ, Yang IA, Rolls TA, Ward DL. Anxiety and depression—Important psychological comorbidities of COPD. *J Thorac Dis*. 2014;11(6):1615–1631.
60. Smallwood N, Currow D, Booth S, et al. Attitudes to specialist palliative care and advance care planning in people with COPD: a multi-national survey of palliative and respiratory medicine specialists. *BMC Palliat Care*. 2018;17(1):1–8. doi:10.1186/s12904-018-0371-8
61. Crawford G, Brooksbank MA, Brown M, et al. Unmet needs of people with end-stage chronic obstructive pulmonary disease: recommendations for change in Australia. *Intern Med J*. 2013;43(2):183–190. doi:10.1111/j.1445-5994.2012.02791.x
62. Smallwood N, Thompson M, Warrender-Sparkes M, et al. Integrated respiratory and palliative care may improve outcomes in advanced lung disease. *ERJ Open Res*. 2018;4(1):00102–2017. doi:10.1183/23120541.00102-2017
63. Vermylen JH, Szmuiłowicz E, Kalhan R. Palliative care in COPD: an unmet area for quality improvement. *Int J Chron Obstruct Pulmon Dis*. 2015;10:1543. doi:10.2147/COPD.S74641
64. Bloom CI, Slaich B, Morales DR, et al. Low uptake of palliative care for COPD patients within primary care in the UK. *Eur Respir J*. 2018;51(2):1701879. doi:10.1183/13993003.01879-2017
65. Philip J, Crawford G, Brand C, et al. A conceptual model: redesigning how we provide palliative care for patients with chronic obstructive pulmonary disease. *Palliat Support Care*. 2018;16(4):452–460. doi:10.1017/S147895151700044X
66. Seys D, Bruyneel L, Decramer M, et al. An international study of adherence to guidelines for patients hospitalised with a COPD exacerbation. *COPD*. 2017;14(2):156–163. doi:10.1080/15412555.2016.1257599
67. Considine J, Botti M, Thomas S. Emergency department management of exacerbation of chronic obstructive pulmonary disease: audit of compliance with evidence-based guidelines. *Intern Med J*. 2011;41(1a):48–54. doi:10.1111/j.1445-5994.2009.02065.x
68. Moher D, Liberati A, Altman D, et al. The PRISMA statement for reporting systematic reviews and meta-analyses of studies that evaluate health care interventions: explanation and elaboration. *J Clin Epidemiol*. 2009;62(10). doi:10.1016/j.jclinepi.2009.06.005

## Journal of Multidisciplinary Healthcare

Dovepress

### Publish your work in this journal

The Journal of Multidisciplinary Healthcare is an international, peer-reviewed open-access journal that aims to represent and publish research in healthcare areas delivered by practitioners of different disciplines. This includes studies and reviews conducted by multidisciplinary teams as well as research which evaluates the results or conduct of such teams or healthcare processes in general. The journal

covers a very wide range of areas and welcomes submissions from practitioners at all levels, from all over the world. The manuscript management system is completely online and includes a very quick and fair peer-review system. Visit <http://www.dovepress.com/testimonials.php> to read real quotes from published authors.

Submit your manuscript here: <https://www.dovepress.com/journal-of-inflammation-research-journal>