



**Cochrane**  
**Library**

Cochrane Database of Systematic Reviews

## Mitomycin C versus 5-Fluorouracil for wound healing in glaucoma surgery (Review)

Cabourne E, Clarke JCK, Schlottmann PG, Evans JR

Cabourne E, Clarke JCK, Schlottmann PG, Evans JR.  
Mitomycin C versus 5-Fluorouracil for wound healing in glaucoma surgery.  
*Cochrane Database of Systematic Reviews* 2015, Issue 11. Art. No.: CD006259.  
DOI: [10.1002/14651858.CD006259.pub2](https://doi.org/10.1002/14651858.CD006259.pub2).

[www.cochranelibrary.com](http://www.cochranelibrary.com)

## TABLE OF CONTENTS

ABSTRACT .....	1
PLAIN LANGUAGE SUMMARY .....	2
SUMMARY OF FINDINGS .....	4
BACKGROUND .....	6
OBJECTIVES .....	6
METHODS .....	6
RESULTS .....	8
Figure 1. ....	9
Figure 2. ....	11
Figure 3. ....	12
DISCUSSION .....	14
AUTHORS' CONCLUSIONS .....	15
ACKNOWLEDGEMENTS .....	15
REFERENCES .....	17
CHARACTERISTICS OF STUDIES .....	20
DATA AND ANALYSES .....	35
Analysis 1.1. Comparison 1 MMC versus 5-FU, Outcome 1 Failure of functioning trabeculectomy at one year. ....	37
Analysis 1.2. Comparison 1 MMC versus 5-FU, Outcome 2 Failure of functioning trabeculectomy at one year in descending order of MMC exposure (dose x duration). ....	38
Analysis 1.3. Comparison 1 MMC versus 5-FU, Outcome 3 Failure of functioning trabeculectomy at one year depending on 5-FU administration technique. ....	38
Analysis 1.4. Comparison 1 MMC versus 5-FU, Outcome 4 Intraocular pressure at one year. ....	39
Analysis 1.5. Comparison 1 MMC versus 5-FU, Outcome 5 Use of postoperative anti-glaucoma medications at final follow up. ..	39
Analysis 1.6. Comparison 1 MMC versus 5-FU, Outcome 6 Mean number of postoperative anti-glaucoma medications. ....	40
Analysis 1.7. Comparison 1 MMC versus 5-FU, Outcome 7 Loss of 2 or more lines of Snellen visual acuity postoperatively. ....	40
Analysis 1.8. Comparison 1 MMC versus 5-FU, Outcome 8 Postoperative Complications. ....	41
ADDITIONAL TABLES .....	45
APPENDICES .....	47
HISTORY .....	49
CONTRIBUTIONS OF AUTHORS .....	49
DECLARATIONS OF INTEREST .....	49
SOURCES OF SUPPORT .....	50
DIFFERENCES BETWEEN PROTOCOL AND REVIEW .....	50
INDEX TERMS .....	50

[Intervention Review]

# Mitomycin C versus 5-Fluorouracil for wound healing in glaucoma surgery

Emily Cabourne<sup>1</sup>, Jonathan CK Clarke<sup>1</sup>, Patricio G Schlottmann<sup>2</sup>, Jennifer R Evans<sup>3</sup><sup>1</sup>Moorfields Eye Hospital NHS Foundation Trust, London, UK. <sup>2</sup>Organizacion Medica de Investigacion, Ciudad de Buenos Aires, Argentina.<sup>3</sup>Cochrane Eyes and Vision Group, ICEH, London School of Hygiene & Tropical Medicine, London, UK**Contact:** Jonathan CK Clarke, Moorfields Eye Hospital NHS Foundation Trust, 162 City Road, London, EC1V 2PD, UK.[jonathan.clarke@moorfields.nhs.uk](mailto:jonathan.clarke@moorfields.nhs.uk).**Editorial group:** Cochrane Eyes and Vision Group.**Publication status and date:** New, published in Issue 11, 2015.**Citation:** Cabourne E, Clarke JCK, Schlottmann PG, Evans JR. Mitomycin C versus 5-Fluorouracil for wound healing in glaucoma surgery. *Cochrane Database of Systematic Reviews* 2015, Issue 11. Art. No.: CD006259. DOI: [10.1002/14651858.CD006259.pub2](https://doi.org/10.1002/14651858.CD006259.pub2).

Copyright © 2015 The Cochrane Collaboration. Published by John Wiley &amp; Sons, Ltd.

## ABSTRACT

### Background

Raised intraocular pressure is a risk factor for glaucoma. One treatment option is glaucoma drainage surgery (trabeculectomy). Antimetabolites are used during surgery to reduce postoperative scarring during wound healing. Two agents in common use are mitomycin C (MMC) and 5-Fluorouracil (5-FU).

### Objectives

To assess the effects of MMC compared to 5-FU as an antimetabolite adjunct in trabeculectomy surgery.

### Search methods

We searched CENTRAL (which contains the Cochrane Eyes and Vision Group Trials Register) (2015 Issue 9), Ovid MEDLINE, Ovid MEDLINE In-Process and Other Non-Indexed Citations, Ovid MEDLINE Daily, Ovid OLDMEDLINE (January 1946 to October 2015), EMBASE (January 1980 to October 2015), Latin American and Caribbean Health Sciences Literature Database (LILACS) (January 1982 to October 2015), the ISRCTN registry ([www.isrctn.com/editAdvancedSearch](http://www.isrctn.com/editAdvancedSearch)), ClinicalTrials.gov ([www.clinicaltrials.gov](http://www.clinicaltrials.gov)) and the World Health Organization (WHO) International Clinical Trials Registry Platform (ICTRP) ([www.who.int/ictrp/search/en](http://www.who.int/ictrp/search/en)). We did not use any date or language restrictions in the electronic searches for trials. We last searched the electronic databases on 2 October 2015.

### Selection criteria

We included randomised controlled trials where wound healing had been modified with MMC compared to 5-FU.

### Data collection and analysis

Two review authors independently selected trials and collected data. The primary outcome was failure of a functioning trabeculectomy one year after surgery. Secondary outcomes included mean intraocular pressure at one year. We considered three subgroups: high risk of trabeculectomy failure (people with previous glaucoma surgery, extracapsular cataract surgery, African origin and people with secondary glaucoma or congenital glaucoma); medium risk of trabeculectomy failure (people undergoing trabeculectomy with extracapsular cataract surgery) and low risk of trabeculectomy failure (people who have received no previous surgical eye intervention).

### Main results

We identified 11 trials that enrolled 687 eyes of 679 participants. The studies were conducted in the United States, Europe, Asia and Africa. Five studies enrolled participants at low risk of trabeculectomy failure, five studies enrolled participants at high risk of failure, and one study

enrolled people with both high and low risk of failure. None of the included trials enrolled participants with combined trabeculectomy/cataract surgery.

We considered one study to be at low risk of bias in all domains, six studies to be at high risk of bias in one or more domains, and the remaining four studies to be at an unclear risk of bias in all domains.

The risk of failure of trabeculectomy at one year after surgery was less in those participants who received MMC compared to those who received 5-FU, however the confidence intervals were wide and are compatible with no effect (risk ratio (RR) 0.54, 95% confidence interval (CI) 0.30 to 1.00; studies = 11;  $I^2 = 40\%$ ). There was no evidence for any difference between groups at high and low risk of failure (test for subgroup differences  $P = 0.69$ ).

On average, people treated with MMC had lower intraocular pressure at one year (mean difference (MD) -3.05 mmHg, 95% CI -4.60 to -1.50), but the studies were inconsistent ( $I^2 = 52\%$ ). The size of the effect was greater in the high-risk group (MD -4.18 mmHg, 95% CI -6.73 to -1.64) compared to the low-risk group (MD -1.72 mmHg, 95% CI -3.28 to -0.16), but again the test for interaction was not statistically significant ( $P = 0.11$ ).

Similar proportions of eyes treated with MMC lost 2 or more lines of visual acuity one year after surgery compared to 5-FU, but the confidence intervals were wide (RR 1.05, 95% CI 0.54 to 2.06).

Adverse events occurred relatively rarely, and estimates of effect were generally imprecise. There was some evidence for less epitheliopathy in the MMC group (RR 0.23, 95% CI 0.11 to 0.47) and less hyphaema in the MMC group (RR 0.62, 95% CI 0.42 to 0.91).

None of the studies reported quality of life.

Overall, we graded the quality of the evidence as low largely because of risk of bias in the included studies and imprecision in the estimate of effect.

### Authors' conclusions

We found low-quality evidence that MMC may be more effective in achieving long-term lower intraocular pressure than 5-FU. Further comparative research on MMC and 5-FU is needed to enhance reliability and validity of the results shown in this review. Furthermore, the development of new agents that control postoperative scar tissue formation without side effects would be valuable and is justified by the results of this review.

## PLAIN LANGUAGE SUMMARY

### Mitomycin C versus 5-Fluorouracil for wound healing in glaucoma surgery

#### Review question

Does mitomycin C (MMC) offer any advantage in comparison to 5-Fluorouracil (5-FU) as the antimetabolite used to augment glaucoma surgery (trabeculectomy)? Does MMC help to achieve lower rates of trabeculectomy failure than 5-FU at one year postoperatively?

#### Background

Raised intraocular pressure is a risk factor for glaucoma. One treatment option is glaucoma drainage surgery (trabeculectomy) to help lower intraocular pressure. Antimetabolites are medicines used during surgery to help reduce scarring after surgery during wound healing. If scarring occurs it can lead to treatment failure because the drainage channel no longer works. Two agents in common use are MMC and 5-FU.

#### Search date

The evidence is up to date to October 2015.

#### Study characteristics

We included 11 randomised controlled trials conducted in the United States, Europe, Asia and Africa in this review. In total, 687 eyes of 679 participants underwent routine trabeculectomy for glaucoma control. Some participants were at a higher risk of failure than others, for example if they had had previous glaucoma surgery, were of African origin, or if they had secondary glaucoma. Five studies enrolled participants at low risk of trabeculectomy failure, five studies enrolled participants at high risk of failure, and one study enrolled people with both high and low risk of failure. None of the included trials enrolled participants with combined trabeculectomy/cataract surgery.

#### Key results

Our review showed that the risk of failure of trabeculectomy at one year after surgery was slightly less in those participants treated with MMC compared to 5-FU. All of the included randomised controlled trials contributed to this result, with a mixed study population of high- and low-risk participants and varied methodology of antimetabolite application. We did not detect any significant differences between the subgroups of participants at low and high risk of failure, but the power of this analysis was low.

We identified no difference between the visual outcomes of the group that received MMC and the group that received 5-FU at one year postoperatively nor in the number of drops used postoperatively. However, we found evidence to suggest that MMC was more effective at lowering intraocular pressure than 5-FU in both high- and low-risk participants, achieving a lower mean intraocular pressure postoperatively than in those who were treated with 5-FU at one year. This effect seemed to be greater in the high-risk populations.

Evaluating the overall complications across all studies revealed a slight favour toward using MMC, particularly with the incidence of epitheliopathy and hyphaema. There was a trend towards bleb leaks, wound leaks, late hypotony and cataract formation in the MMC-treated group.

None of the studies reported quality of life.

**Quality of the evidence**

We graded the quality of the evidence as low, mostly due to the risk of bias in the included studies. One bias we commonly encountered came from the different techniques of antimetabolite administration, making it difficult to conceal which medicine was being used. Furthermore, most studies only had a few complications to report, which meant that there were low numbers overall to include in the analysis of complications.

## SUMMARY OF FINDINGS

### Summary of findings for the main comparison. MMC compared to 5-FU for wound healing in glaucoma surgery

#### MMC compared to 5-FU for wound healing in glaucoma surgery

**Patient or population:** wound healing in glaucoma surgery

**Settings:**

**Intervention:** MMC

**Comparison:** 5-FU

Outcomes	Illustrative comparative risks* (95% CI)		Relative effect (95% CI)	No of Participants/eyes (studies)	Quality of the evidence (GRADE)	Comments
	Assumed risk	Corresponding risk				
	5-FU	MMC				
Failure of functioning trabeculectomy at 1 year	<b>Study population</b>		Low-risk population RR 0.65 (95% CI 0.19 to 2.20)	634 (11 RCTs: 6 including low-risk population and 5 including high-risk population)	⊕⊕⊕⊕ LOW 1,2	
	Low-risk population: 74 per 1000	Low-risk population: 50 per 1000	High-risk population RR 0.49 (95% CI 0.22 to 1.08)			
	High-risk population: 272 per 1000	High-risk population: 137 per 1000				
Intraocular pressure at 1 year	The mean intraocular pressure at 1 year ranged across 5-FU groups.	The mean intraocular pressure at 1 year in the MMC groups had a range of values.	-	386 (7 RCTs: 3 including low-risk population and 4 including high-risk population)	⊕⊕⊕⊕ LOW 1,3	
	Low-risk population: 10.9 to 14.3 mmHg	Low-risk population: 9.9 to 11.6 mmHg				
	High-risk population: 14.8 to 16.3 mmHg	High-risk population: 8.6 to 13.7 mmHg				
Loss of 2 or more lines of Snellen visual acuity at 1 year	<b>Study population</b>		Low-risk population RR 2.00 (95% CI 0.53 to 7.59)	328 (5 RCTs: 2 including low-risk population and 3 including high-risk population)	⊕⊕⊕⊕ LOW 2,4	
	Low-risk population: 47 per 1000	Low-risk population: 94 per 1000	High-risk population RR 0.81 (95% CI 0.36 to 1.80)			
	High-risk population: 115 per 1000	High-risk population: 96 per 1000				
	<b>Study population</b>		RR 1.37 (95% CI 0.41 to 4.63)	211 (4 RCTs)	⊕⊕⊕⊕ LOW 2,4	

Postoperative complications: late hypotony	37 per 1000	59 per 1000			
Postoperative complications: choroidal detachment	<b>Study population</b>		RR 0.86 (95% CI 0.45 to 1.63)	494 (8 RCTs)	⊕⊕○○ LOW 1,2
	68 per 1000	70 per 1000			
Postoperative complications: endophthalmitis	<b>Study population</b>		RR 3.89 (95% CI 0.44 to 34.57)	315 (4 RCTs)	⊕⊕○○ LOW 1,2
	0 per 1000	19 per 1000			
Quality of life at 1 year					Not reported

\*The basis for the **assumed risk** (e.g. the median control group risk across studies) is provided in footnotes. The **corresponding risk** (and its 95% confidence interval) is based on the assumed risk in the comparison group and the **relative effect** of the intervention (and its 95% CI).

**5-FU:** 5-Fluorouracil; **CI:** confidence interval; **MMC:** mitomycin C; **RCT:** randomised controlled trial; **RR:** risk ratio

GRADE Working Group grades of evidence

**High quality:** Further research is very unlikely to change our confidence in the estimate of effect.

**Moderate quality:** Further research is likely to have an important impact on our confidence in the estimate of effect and may change the estimate.

**Low quality:** Further research is very likely to have an important impact on our confidence in the estimate of effect and is likely to change the estimate.

**Very low quality:** We are very uncertain about the estimate.

<sup>1</sup>Downgraded for risk of bias: only one study at low risk of bias in all domains

<sup>2</sup>Downgraded for imprecision: wide confidence intervals

<sup>3</sup>Downgraded for inconsistency: I<sup>2</sup> = 60%

<sup>4</sup>Downgraded for risk of bias: no study at low risk of bias in all domains

## BACKGROUND

### Description of the condition

Glaucoma is a chronic, progressive optic neuropathy characterised by a progressive loss of ganglion cells that leads to a characteristic visual function loss. Intraocular pressure (IOP) is often considered to be a major risk factor for glaucoma, and it is the only factor that can be modified to try to change the course of the condition. The publication of a series of randomised controlled trials (RCTs) has established the evidence for treating glaucoma with IOP reduction (AGIS 1998; CNTGS 1998; Heijl 2002; Kass 2002; Maier 2005; Vass 2007).

Glaucoma drainage surgery remains an important treatment option for the control of IOP despite the addition of several new IOP-lowering drugs. Some evidence suggests that trabeculectomy is more effective than either medicine or laser treatment alternatives (Migdal 1994). However, a Cochrane systematic review from 2012 found that visual field deterioration up to five years is not significantly different whether treatment is initiated with medication or trabeculectomy (Burr 2012).

Optimum success rates are achieved when the eye has been exposed to no previous interventions, either surgical or medical, although this is not the usual situation in high-income countries. Risk factors for trabeculectomy failure are thought to be those that increase the scarring response and include previous exposure to topical medication, previous surgical manipulation of the conjunctiva or other injury, young age, African origin, a history of uveitis and neovascular glaucoma (EGS 2003).

### Presentation and diagnosis

The diagnosis of glaucoma is made by the identification of a progressive optic neuropathy or a characteristic visual field defect. There are subgroups of glaucoma, primary open angle glaucoma being most common in European and African populations. A person with primary open angle glaucoma is often unaware of any symptoms until the late stages of the disease, making early diagnosis essential.

### Description of the intervention

Treatment is usually initiated with topical treatment, and surgical options are considered if topical treatment fails to prevent progression of the disease. The trabeculectomy produces a guarded fistula between the anterior chamber and the subconjunctival space. There have been numerous modifications since its first description (Cairns 1968), including the use of antimetabolites to reduce fibroblast activity and postoperative scarring at the site of the scleral flap and the subconjunctival space.

### How the intervention might work

Once trabeculectomy has been selected, the treatment decisions are whether to augment the surgery with antiscarring agents such as antimetabolites. Antimetabolites are applied to the surgical site to inhibit fibroblast activity and reduce postoperative scarring; the two agents commonly in use are mitomycin C (MMC) and 5-Fluorouracil (5-FU). Due to reported side effects such as increased risk of bleb leak, hypotony and endophthalmitis (DeBry 2002), there is concern that use of these agents should be restricted to high-risk cases only. A number of RCTs have reported the

use of MMC (Andreanos 1997; Carlson 1997; Cohen 1996; Costa 1996; Martini 1997; Robin 1997; Shin 1995; Shin 1998; Wu 1996). A Cochrane systematic review concluded that compared to placebo, MMC reduces mean IOP at 12 months in all groups of participants (Wilkins 2010). Apart from increase in cataract formation, there was insufficient power to detect any increase in other serious side effects. Postoperative 5-FU injections to augment trabeculectomy have also been assessed with RCTs (FFSSG 1989; Goldenfeld 1994; Ophir 1992; Ruderman 1987), and also confer an improvement in IOP control at one year compared to placebo (Green 2014). Clinically, MMC and 5-FU can be applied intraoperatively on a sponge placed for one to five minutes between the conjunctiva and sclera at the start of the operation. Alternatively, 5-FU may be given as one or more postoperative subconjunctival injections. There is marked variation in the concentrations of both drugs used, the time of intraoperative application and the position and volume of postoperative injections.

### Why it is important to do this review

The results of two Cochrane reviews comparing MMC, in Wilkins 2010, and 5-FU, in Green 2014, to placebo suggest a similar effect for the two agents in inhibiting scarring after trabeculectomy. However, there is no direct comparative evidence to influence which antimetabolite a surgeon should choose. The purpose of this review was to systematically summarise the RCTs in which MMC was compared to 5-FU in an attempt to clearly identify treatment benefits of one agent over the other.

## OBJECTIVES

To assess the effects of MMC compared to 5-FU as an antimetabolite adjunct in trabeculectomy surgery.

## METHODS

### Criteria for considering studies for this review

#### Types of studies

We included RCTs where wound healing had been modified with one of the antimetabolites in one group of people undergoing trabeculectomy, compared to the other antimetabolite in the other group.

#### Types of participants

There were three separate subgroup populations:

- High risk of trabeculectomy failure: people with previous glaucoma or extracapsular cataract surgery, people of African origin and people with secondary glaucoma or congenital glaucoma.
- Medium risk of trabeculectomy failure: (combined surgery) people undergoing trabeculectomy with extracapsular cataract surgery.
- Low risk of trabeculectomy failure: (primary trabeculectomy): people who have received no previous surgical eye intervention. People who underwent previous laser procedures may be included in this group.

For the purpose of this review, there were no restrictions regarding age or gender.



## Types of interventions

We included the following interventions:

1. Use of intraoperative MMC versus intraoperative 5-FU.
2. Use of intraoperative MMC versus postoperative 5-FU.
3. Use of intraoperative MMC versus intraoperative and postoperative 5-FU.
4. Use of intraoperative MMC and postoperative MMC versus intraoperative and postoperative 5-FU.

## Types of outcome measures

### Primary outcomes

The primary outcome was failure of a functioning trabeculectomy at one year from surgery (dichotomous).

We used the following definitions:

- Success: adequate pressure control (< 22 mmHg) without additional treatment.
- Failure: need for repeat filtration surgery or uncontrolled IOP (= or > 22 mmHg).

### Secondary outcomes

- Survival analysis (time to event) for the previously given definition of failure
- Mean IOP for each group at one year from surgery
- Quality-of-life measures
- Economic data

### Adverse outcomes

Adverse events in either group with reference to choroidal detachment, hypotony and late endophthalmitis were reported. Adverse events were reported at any time during the follow-up period.

We used the following definitions:

- Bleb leakage: presence of a positive Seidel test (visible aqueous flow with the tear film stained with fluorescein).
- Hypotony: IOP below 5 mmHg and/or associated with complications such as macular oedema and sight loss or choroidal detachments.
- Endophthalmitis: an infection of the globe contents that even with prompt aggressive treatment results in substantial loss of visual function.

## Search methods for identification of studies

### Electronic searches

We searched CENTRAL (which contains the Cochrane Eyes and Vision Group Trials Register) (2015 Issue 9), Ovid MEDLINE, Ovid MEDLINE In-Process and Other Non-Indexed Citations, Ovid MEDLINE Daily, Ovid OLDMEDLINE (January 1946 to October 2015), EMBASE (January 1980 to October 2015), Latin American and Caribbean Health Sciences Literature Database (LILACS) (January 1982 to October 2015), the ISRCTN registry ([www.isrctn.com/editAdvancedSearch](http://www.isrctn.com/editAdvancedSearch)), ClinicalTrials.gov ([www.clinicaltrials.gov](http://www.clinicaltrials.gov)) and the World Health Organization (WHO) International Clinical Trials Registry Platform (ICTRP) ([www.who.int/ictpr/search/en](http://www.who.int/ictpr/search/en)). We

did not use any date or language restrictions in the electronic searches for trials. We last searched the electronic databases on 2 October 2015.

See: Appendices for details of search strategies for CENTRAL ([Appendix 1](#)), MEDLINE ([Appendix 2](#)), EMBASE ([Appendix 3](#)), LILACS ([Appendix 4](#)), ISRCTN ([Appendix 5](#)), ClinicalTrials.gov ([Appendix 6](#)) and the ICTRP ([Appendix 7](#)).

### Searching other resources

We searched the reference lists of identified trial reports to find additional trials. We contacted investigators as necessary to identify additional published and unpublished studies.

## Data collection and analysis

### Selection of studies

Three review authors (JC/EC/JE) independently reviewed the titles and abstracts resulting from the searches. We obtained full copies of any report referring to possibly or definitely relevant trials and assessed them according to the definitions in the [Criteria for considering studies for this review](#) section. We assessed only trials meeting these predefined criteria for methodological quality. We resolved any disagreements by discussion.

### Data extraction and management

Three review authors (JC/EC/JE) independently extracted data with relation to the outcome measures outlined above. We resolved discrepancies by discussion. One review author entered the data into Review Manager ([RevMan 2014](#)), and the other review authors checked the data entry.

### Assessment of risk of bias in included studies

Three review authors (JC/EC/JE) independently assessed risk of bias according to methods set out in Chapter 8 of the *Cochrane Handbook for Systematic Reviews of Interventions* ([Higgins 2011](#)). We considered six domains: random sequence generation, allocation concealment, masking, incomplete outcome data, selective reporting and any other identified bias. We graded each domain as low risk of bias, high risk of bias, or unclear risk of bias. For example, in allocation concealment the grading was low risk if there was central randomisation of subjects, high risk if there was simple alternating methods used to allocate subjects and unclear if there was no real qualifying statement. We resolved disagreements by discussion. Review authors were not masked to trial details during the assessment. We excluded trials scoring 'high risk' on allocation concealment. In cases where missing or confusing data did not permit a clear grading of the trial, we contacted the study authors in order to obtain further information.

### Measures of treatment effect

We measured the effect of dichotomous data by risk ratio; continuous data by difference in means; and time to event data by hazard ratio.

### Unit of analysis issues

All studies were parallel-group RCTs. In the majority of studies, one eye per person was enrolled, and therefore there were no unit of analysis issues. In [Lamping 1995](#), [WuDunn 2002](#) and [Xinyu 2001](#), both eyes of some participants were enrolled, but in most cases this

was less than 10%, and overall less than 5% of the data would be affected by this. None of the trials took into account the potential correlation between eyes, and we have analysed the data from the trials as reported.

### Dealing with missing data

We did an available case analysis. This assumes that data are missing at random. We assessed whether this assumption was reasonable by collecting data from each included trial on the number of participants excluded or lost to follow-up and reasons for loss to follow-up by treatment group, if reported. We collected this information as part of the assessment of attrition bias.

### Assessment of heterogeneity

We examined the overall characteristics of the studies, in particular the types of participants and interventions, in order to assess the extent to which the studies were similar enough to make pooling study results sensible.

We looked at the forest plot of study results to see how consistent the studies were, in particular looking at the size and direction of effects.

We calculated  $I^2$ , which is the percentage of the variability in effect estimates that is due to heterogeneity rather than sampling error (chance) (Higgins 2002). We considered  $I^2$  values over 50% to indicate substantial inconsistency or heterogeneity. We also considered  $\text{Chi}^2$  P values; when the number of studies was few we used P less than 0.1 to indicate statistical significance of the  $\text{Chi}^2$  test.

### Assessment of reporting biases

We planned to do a 'funnel plot' to investigate reporting (publication) bias, but there were not enough included trials (fewer than 10 in each meta-analysis) to make this possible.

### Data synthesis

If there was inconsistency between individual study results such that a pooled result may not have been a good summary of the individual trial results, for example the effects were in different directions, or  $I^2$  was greater than 50% and P less than 0.1, we did not pool the data but did describe the pattern of the individual study results.

If  $I^2$  was greater than 50%, but all the effect estimates were in the same direction such that a pooled estimate would seem to have provided a good summary of the individual trial results, we did pool the data.

If there was inconsistency between individual study results such that a pooled result may not have been a good summary of the individual trial results, for example the effects were in different directions, or  $I^2$  was greater than 50% and P less than 0.1, we did not pool the data but did describe the pattern of the individual study results.

If  $I^2$  was greater than 50%, but all the effect estimates were in the same direction such that a pooled estimate would have provided a good summary of the individual trial results, we did pool the data.

### Subgroup analysis and investigation of heterogeneity

We compared the effect of intervention in a pre-planned analysis comparing effects in groups at high and low risk of failure.

### Sensitivity analysis

We conducted sensitivity analyses to determine the impact of risk of bias on effect size. We repeated the analyses excluding trials at high risk of bias in one or more domains.

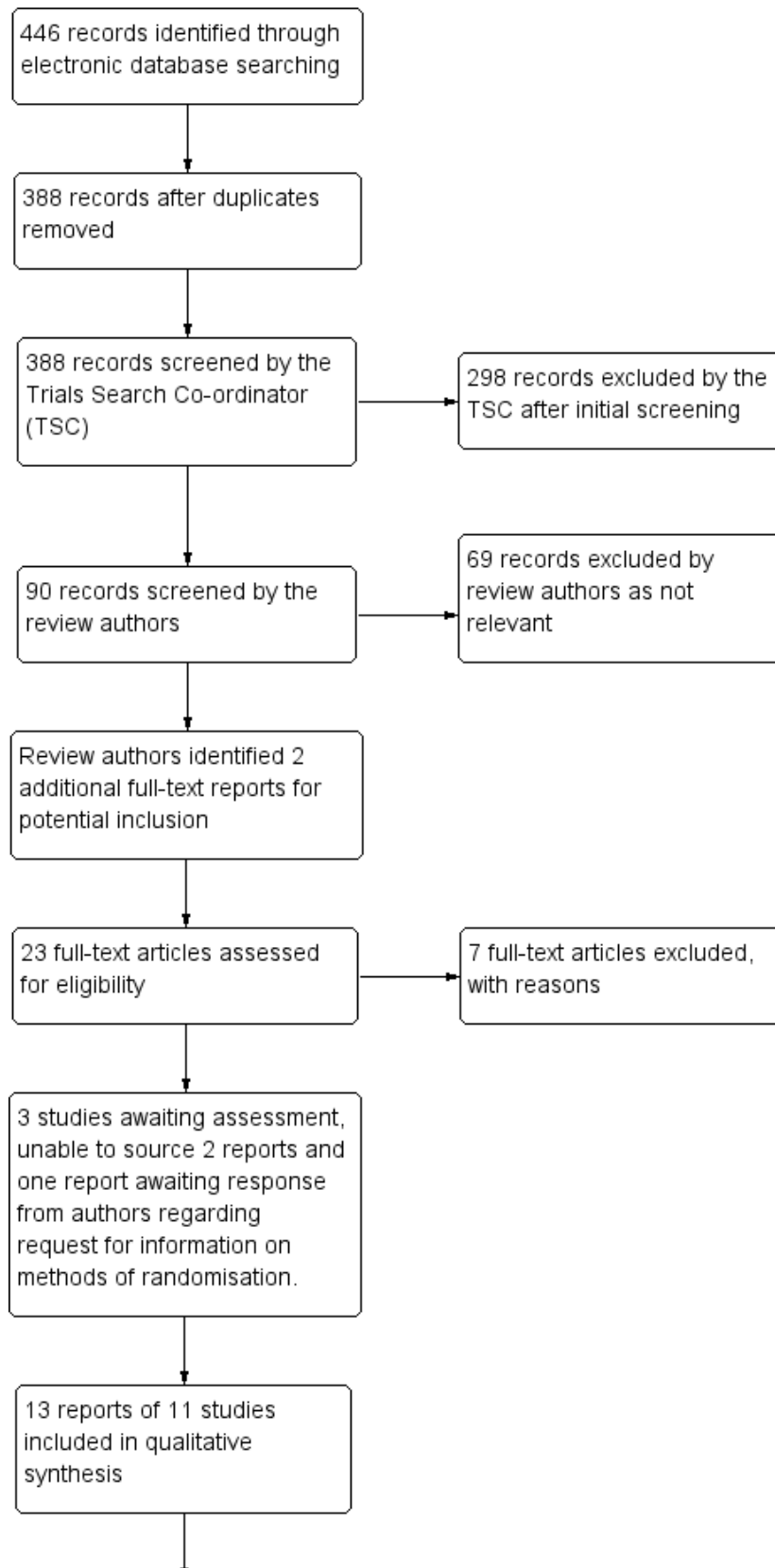
## RESULTS

### Description of studies

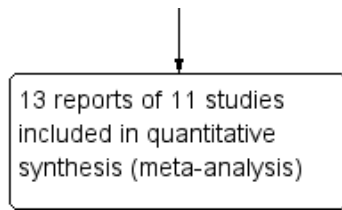
#### Results of the search

The electronic searches yielded a total of 446 references (Figure 1). The Trials Search Co-ordinator scanned the search results, removed 58 duplicates and then removed 298 references that were not relevant to the scope of the review. We screened the remaining 90 reports and discarded 69 reports as not relevant. After assessing the reports, we identified a further two studies for potential inclusion in the review (Oh 1994; Uva 1996). In total, we obtained 23 full-text reports for potential inclusion in the review. After consideration of each report, we included a total of 13 reports of 11 studies in the final review; see [Characteristics of included studies](#) and excluded seven studies; see [Characteristics of excluded studies](#) for reasons. We have categorised three studies as awaiting assessment, two of which we are unable to source copies of the reports and one is awaiting a response from the authors regarding information on methods of randomisation (Liu 2015).

**Figure 1. Study flow diagram**



**Figure 1. (Continued)**



**Included studies**

**Design**

We included a total of 11 studies in this Cochrane Review and summarised them in the [Characteristics of included studies](#). All 11 studies were designed as a prospective RCTs. One study in this review was a multicentre study ([Singh 2000](#)); the rest were single-centre.

**Setting**

Four studies were based in the United States ([Katz 1995](#); [Lamping 1995](#); [Singh 2000](#); [WuDunn 2002](#)), two in Italy ([Sisto 2007](#); [Uva 1996](#)) and the remainder in Ghana ([Singh 1997](#)), Japan ([Kitazawa 1991](#)), China ([Xinyu 2001](#)), Israel ([Zadok 1995](#)) and Iran ([Mostafaei 2011](#)). All research was carried out in clinical ophthalmic institutes.

**Participants and sample sizes**

In total, 687 eyes of 679 participants underwent routine trabeculectomy for glaucoma control. The smallest study was of 20 eyes of 20 participants ([Zadok 1995](#)), and the largest study included 115 eyes of 103 people ([WuDunn 2002](#)). Five studies included high-risk cases only ([Katz 1995](#); [Kitazawa 1991](#); [Lamping 1995](#); [Singh 1997](#); [Sisto 2007](#)), one study enrolled both high- and low-risk cases ([Xinyu 2001](#)), and the participants in the remaining five studies were low risk. Participants across the studies were a mixture of male and female; the percentage female ranged from 19% to 67%. The average age in the studies ranged from 47 years to 71 years, with a median average age of 62 years. One study had a significant age difference ( $P = 0.01$ ), with a mean age of 41.2 in the MMC group and 54.2 in the 5-FU group ([Kitazawa 1991](#)).

**Interventions**

We have summarised the interventions in [Table 1](#).

The majority of trials applied MMC using an intraoperative sponge; the exception was [Mostafaei 2011](#), where 0.02mg MMC was applied by intraoperative subconjunctival injection. Subconjunctival application of MMC is not consistent with current practice ([Dhingra 2009](#)). The MMC dose given by intraoperative sponge varied between studies:

- Two studies used 0.5 mg/ml applied for 5 minutes, in [Katz 1995](#), or 3.5 minutes, in [Singh 1997](#).
- Three studies used 0.4 mg/ml applied for 5 minutes ([Kitazawa 1991](#)), 2.5 minutes ([Lamping 1995](#)), or 2 minutes ([Singh 2000](#)).
- Five studies used 0.2 mg/ml applied for 5 minutes, in [Xinyu 2001](#) and [Zadok 1995](#), or 2 minutes, in [Sisto 2007](#), [Uva 1996](#) and [WuDunn 2002](#).

The method of administration of the 5-FU varied between studies: four studies used an intraoperative sponge technique similar to that of MMC application ([Singh 1997](#); [Singh 2000](#); [Uva 1996](#); [WuDunn 2002](#)), six trials used a series of postoperative subconjunctival injections ([Katz 1995](#); [Kitazawa 1991](#); [Lamping 1995](#); [Sisto 2007](#); [Xinyu 2001](#); [Zadok 1995](#)), and one study used intraoperative subconjunctival 5-FU 5 mg ([Mostafaei 2011](#)). All four studies with a group receiving intraoperative sponge-applied 5-FU used 50 mg/ml for 5 minutes, which is consistent with current practice ([Dhingra 2009](#)).

Different dosing regimens were used for the postoperative injections.

- Four studies used 10 postoperative injections
  - daily for 1 week, 3 times the following week ([Katz 1995](#));
  - each day for 1 week, every other day for the following week ([Kitazawa 1991](#));
  - first 10 days ([Lamping 1995](#));
  - starting on day 7, 2 injections per week for 2 weeks and then 1 injection per week for 6 weeks ([Sisto 2007](#)).
- Two studies used approximately 7 postoperative injections
  - once daily up to 7 times in the first week after surgery ([Zadok 1995](#));
  - 6 to 8 (alternate days, starting on day 3) ([Xinyu 2001](#))

**Outcomes**

All of the 11 included studies stated an optimal postoperative IOP to achieve in order to accept success: five studies used a level of below 21 mmHg as desirable ([Kitazawa 1991](#); [Singh 1997](#); [Singh 2000](#); [Sisto 2007](#); [Zadok 1995](#)), two studies used equal to or less than 21 mmHg ([Lamping 1995](#); [WuDunn 2002](#)), two used equal to or less than 12 mmHg ([Katz 1995](#); [Uva 1996](#)), one used less than 21.06 mmHg ([Xinyu 2001](#)), and one study used 6 to 22 mmHg ([Mostafaei 2011](#)). Each study group reported their findings either as a percentage success or mean IOP.

**Excluded studies**

We excluded seven studies from the review: [Ashworth 2003](#); [Dreyer 1995](#); [Li 2001](#); [Membrey 2000](#); [Membrey 2001](#); [Rodriguez-Bermejo 1993](#); [Oh 1994](#). For further details please see [Characteristics of excluded studies](#).

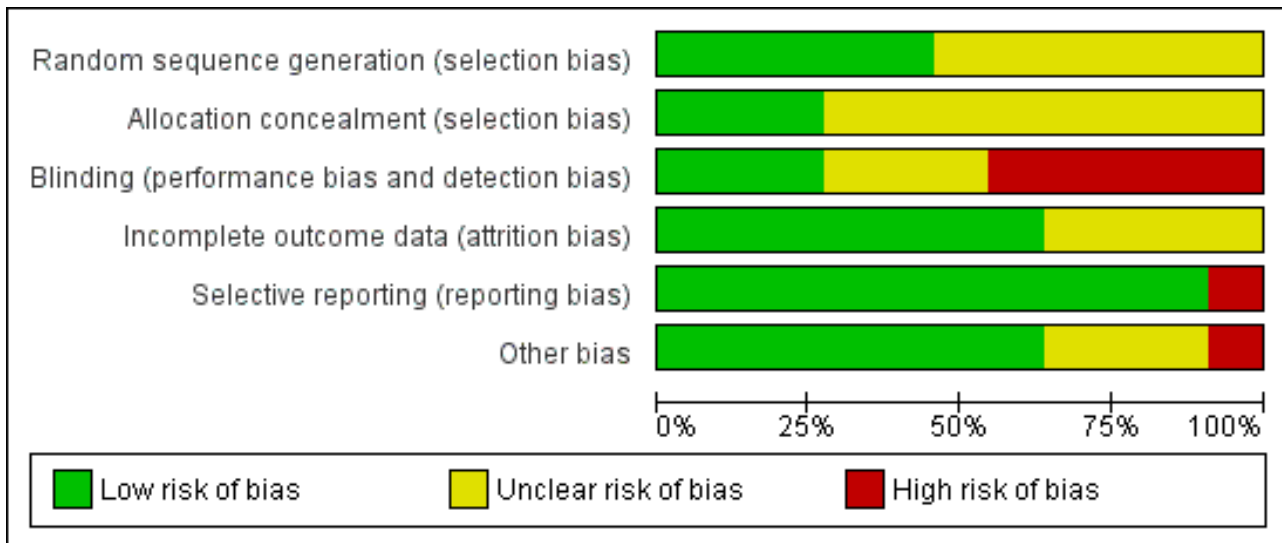
**Risk of bias in included studies**

See [Figure 2](#); [Figure 3](#)

**Figure 2. Risk of bias summary: review authors' judgements about each risk of bias item for each included study.**

	Random sequence generation (selection bias)	Allocation concealment (selection bias)	Blinding (performance bias and detection bias)	Incomplete outcome data (attrition bias)	Selective reporting (reporting bias)	Other bias
Katz 1995	?	?	-	+	+	-
Kitazawa 1991	?	?	-	?	+	+
Lamping 1995	?	?	-	+	+	+
Mostafaei 2011	?	?	?	?	+	+
Singh 1997	+	+	-	?	-	?
Singh 2000	+	+	?	+	+	+
Sisto 2007	+	?	+	+	+	?
Uva 1996	+	?	?	+	+	?
WuDunn 2002	+	+	+	+	+	+
Xinyu 2001	?	?	-	?	+	+
Zadok 1995	?	?	+	+	+	+

**Figure 3. Risk of bias graph: review authors' judgements about each risk of bias item presented as percentages across all included studies.**



The review authors individually assessed the risk of bias. If the relative point was addressed in a study's manuscript, then a true assessment of 'high' or 'low' risk was carried out. If we deemed the risk as unclear, then this indicated we could make no true assessment because the required information was not given either in the published manuscript or after making contact with the lead author.

**Allocation**

Five studies reported adequate methods to generate a random allocation sequence: Singh 1997 tossed a coin in the operating theatre to allocate participants; Uva 1996 used a table of random numbers; and the remaining three studies used computer-generated allocation sequences (Singh 2000; Sisto 2007; WuDunn 2002).

It was unclear how the allocation schedule was generated in the remaining six studies.

Five studies reported adequate methods of allocation concealment (Kitazawa 1991; Singh 1997; Singh 2000; Uva 1996; WuDunn 2002)

**Blinding**

In four of the included studies, 5-FU was administered using a different technique to that of MMC, and no report was given about whether or not the follow-up information was gathered from masked assessors. We classified all these studies as high risk of performance and detection bias (Katz 1995; Kitazawa 1991; Lamping 1995; Xinyu 2001).

In one study, the method of 5-FU administration was the same as for MMC, but information gathered in the follow-up period was not from masked assessors. We therefore classified this study as high risk (Singh 1997).

Two studies used different techniques for antimetabolite administration but assessors were masked during the follow-up period. We graded these two studies as low risk of performance and

detection bias for the primary outcome of this review (Sisto 2007; Zadok 1995).

Only one study used a placebo to mask allocation, which we graded as at low risk of performance and detection bias (WuDunn 2002).

We graded the other three studies as unclear because the surgical administration of the antimetabolites was the same, but there was no mention of masking during follow-up (Mostafaei 2011; Singh 2000; Uva 1996).

**Incomplete outcome data**

Four studies did not comment on the exclusion or inclusion of participants in their analysis (Kitazawa 1991; Mostafaei 2011; Singh 1997; Xinyu 2001); we classified these as unclear risk. We classified the other seven studies as low risk as participants were clearly identified as included or not. No studies raised any concern over their intention to include or exclude participants.

**Selective reporting**

Singh 1997 did not specify in the methods of the paper what outcomes they considered, thus we cannot be certain that all the intended outcomes were addressed; we highlighted this as high risk. All other studies commented on all stated outcomes.

**Other potential sources of bias**

The only other sources of bias identified were that of postoperative care with regard to what other care or medications participants received and the varied amount of 5-FU a participant would receive with an incomplete postoperative regimen. This was highlighted in the study by Katz 1995. Other studies had no other clear identifiable bias.

**Effects of interventions**

See: [Summary of findings for the main comparison MMC compared to 5-FU for wound healing in glaucoma surgery](#)

### Failure of a functioning trabeculectomy at one year from surgery (primary outcome)

All 11 studies reported failure of a functioning trabeculectomy at approximately one year, which was defined as IOP above (approximately) 22 mmHg or more ([Analysis 1.1](#)).

The risk of failure of trabeculectomy at one year after surgery was lower in those treated with MMC compared to 5-FU (risk ratio (RR) 0.54, 95% confidence interval (CI) 0.30 to 1.00; studies = 11;  $I^2 = 40\%$ ). However, the confidence intervals of the studies were wide, and we cannot exclude important differences.

There was no evidence for any difference between groups at high and low risk of failure (test for subgroup differences  $P = 0.69$ ), but with only a few trials in each group, the power of the analysis to detect any differences was low.

The dose of MMC varied across the studies included in the review, and consequently we performed a dose-response analysis. We identified a trend showing that studies increasingly favoured the use of MMC rather than 5-FU as the intraoperative exposure to MMC increased ([Analysis 1.2](#)). Overall exposure was calculated by multiplying the concentration of MMC by the duration of exposure for each study. We then listed the studies in descending order of MMC exposure to view the overall effect. We excluded one study that administered the MMC by subconjunctival injection from this analysis.

When considering the method of 5-FU administration as in [Analysis 1.3](#), there was no significant effect on the overall outcome whether the 5-FU was administered by postoperative subconjunctival injections or by the more current method of intraoperative sponge application (subgroup difference  $P = 0.93$ )

### Time to failure of functioning trabeculectomy

No trial reported this outcome.

### Mean IOP one year from surgery

Seven studies reported mean IOP at 12 months (range 6 to 18 months). On average, people treated with MMC had lower IOP at one year (mean difference (MD) -3.05 mmHg, 95% CI -4.60 to -1.50) ([Analysis 1.4](#)). There was inconsistency between trials ( $I^2 = 52\%$ ), the MD showing a large range in the studies.

The size of the effect was greater in the high-risk group (MD -4.18 mmHg, 95% CI -6.73 to -1.64) compared to the low-risk group (MD -1.72 mmHg, 95% CI -3.28 to -0.16), but the test for interaction was not statistically significant ( $P = 0.11$ ).

### Postoperative use of antiglaucoma medications

Seven studies reported on the frequency of postoperative use of antiglaucoma medications. Similar proportions of people treated with MMC and 5-FU required postoperative medication to control pressure (RR 1.03, 95% CI 0.57 to 1.85) ([Analysis 1.5](#)). There was no evidence for any difference in effect between high-risk and low-risk groups ( $P = 0.88$ ). The low-risk group trials were consistent ( $I^2 = 0\%$ ), but we saw different results in the three higher-risk group trials ( $I^2 = 74\%$ ).

Four studies reported the mean number of antiglaucoma medications used. On average, people receiving MMC used fewer

antiglaucoma medications (MD -0.33, 95% CI -0.70 to 0.05), but the effect was uncertain (CIs include 0.00), and the studies were inconsistent ( $I^2 = 71\%$ ) ([Analysis 1.6](#)). The inconsistency in the trials came from those with a higher risk of failure ( $I^2 = 62\%$ ). However, there was a difference between the trials including participants at high risk of failure and those including participants at low risk of failure with a greater relative effect of MMC in the higher-risk groups (test for interaction  $P = 0.06$ ). The main caveat was that there were only two trials in each group of the analysis.

### Reduction in visual acuity

Five studies reported postoperative visual acuity. The proportion of eyes treated with MMC that lost 2 or more lines of visual acuity one year after surgery was similar to that of 5-FU, but the CIs were wide (RR 1.05, 95% CI 0.54 to 2.06) ([Analysis 1.7](#)).

### Quality of life

No trial reported this outcome.

### Economic data

No trial reported this outcome.

### Adverse outcomes

#### Bleb leak

Two studies reported bleb leak as a complication encountered following trabeculectomy. Participants receiving MMC were more likely to have a postoperative bleb leak, although the CI was wide, and only two studies reported this outcome (RR 1.22, 95% CI 0.32 to 4.68;  $I^2 = 0\%$ ).

Six studies used the term 'wound leak' rather than 'bleb leak' in their assessment of postoperative complications. These studies also showed, with similar statistics, that participants receiving MMC were more likely to have a postoperative wound leak than those receiving 5-FU, although the CI was wide (RR 1.17, 95% CI 0.51 to 2.71;  $I^2 = 0\%$ ).

#### Late hypotony

Five studies reported hypotony post-trabeculectomy. Participants receiving MMC were more likely to have postoperative hypotony compared to those participants who received 5-FU, however the effect was uncertain with wide CIs compatible with no effect or increased hypotony in the 5-FU group (RR 1.37, 95% CI 0.41 to 4.63;  $I^2 = 0\%$ ).

#### Maculopathy

Four studies reported maculopathy following trabeculectomy. Participants receiving MMC were more likely to encounter maculopathy postoperatively than those receiving 5-FU, but the effect was uncertain and CI compatible with no effect or increased maculopathy in the 5-FU group (RR 1.71, 95% CI 0.35 to 8.33;  $I^2 = 0\%$ ).

#### Cataract

Four studies reported the incidence of postoperative cataract development. Participants receiving MMC were more likely to develop cataract than those receiving 5-FU, but again the CIs include 1 (null effect) (RR 1.73, 95% CI 0.65 to 4.61;  $I^2 = 24\%$ ).

### Shallow anterior chamber

Five studies noted postoperative shallowing of the anterior chamber. Those participants receiving MMC were more likely to present with a shallow anterior chamber than those who received 5-FU. The statistical analysis showed a wide CI (RR 1.22, 95% CI 0.67 to 2.21;  $I^2 = 0\%$ ).

### Choroidal detachment

Nine studies (549 eyes) reported a choroidal detachment as a postoperative complication following trabeculectomy. Three studies (303 eyes) reported the same event as a 'suprachoroidal haemorrhage'. The former group of studies found no difference in the rate of events between those participants who received MMC and those who received 5-FU (RR 0.86, 95% CI 0.45 to 1.63;  $I^2 = 0\%$ ). The latter group of studies favoured those participants who received MMC, although the CI was wide (RR 0.73, 95% CI 0.09 to 5.66;  $I^2 = 18\%$ ).

### Epitheliopathy

Nine studies (474 eyes) reported this complication following trabeculectomy. Those participants who received MMC were less likely to have an epitheliopathy following surgery than those who received 5-FU, which is most likely a result of the differences in the technique of antimetabolite application (RR 0.23, 95% CI 0.11 to 0.47;  $I^2 = 0\%$ ).

### Tenon's cyst

Four studies (232 eyes) reported Tenon's cysts in their postoperative complication analysis. Those participants who received MMC were less likely to have a Tenon's cyst following surgery, although the CI was wide (RR 0.94, 95% CI 0.20 to 4.38;  $I^2 = 34\%$ ).

### Hyphaema

Four studies (250 eyes) documented postoperative hyphaema during their follow-up of participants. Participants who received MMC were less likely to have a postoperative hyphaema than those who received 5-FU, which may be a consequence of antimetabolite application differences (RR 0.62, 95% CI 0.42 to 0.91;  $I^2 = 0\%$ ).

### Endophthalmitis

Four studies (315 eyes) published rates of postoperative endophthalmitis. Participants receiving MMC were more likely to have endophthalmitis following trabeculectomy than those who received 5-FU. The CI was wide (RR 3.89, 95% CI 0.44 to 34.57;  $I^2 = 0\%$ ).

### Sensitivity analyses (excluding studies at high risk of bias)

An interesting feature of these analyses was that the trials at high risk of bias were also the trials recruiting participants at high risk of failure. In general, excluding these studies improved the consistency (reduced  $I^2$ ). Although the estimate of effect changed in these analyses, in general the conclusions (of uncertainty in most cases) did not.

Outcome	Name	All trials	Excluding trials at high risk of bias in 1 or more domains
<a href="#">Analysis 1.1*</a>	Failure of functioning trabeculectomy at 1 year	RR 0.54, 95% CI 0.30 to 1.00	RR 1.02, 95% CI 0.50 to 2.04
<a href="#">Analysis 1.4*</a>	Mean intraocular pressure at 1 year	MD -3.05 mmHg, 95% CI -4.60 to -1.50	MD -1.72 mmHg, 95% CI -3.28 to -0.16
<a href="#">Analysis 1.5**</a>	Use of postoperative medication at 1 year	RR 1.03, 95% CI 0.57 to 1.85	RR 1.39, 95% CI 0.75 to 2.57
<a href="#">Analysis 1.6*</a>	Mean number of postoperative medications at 1 year	MD -0.33, 95% CI -0.70 to 0.05	MD -0.08, 95% CI -0.27 to 0.11
<a href="#">Analysis 1.7**</a>	Loss of 2 or more lines of visual acuity at 1 year	RR 1.05, 95% CI 0.54 to 2.06	RR 2.00, 95% CI 0.53 to 7.59

CI: confidence interval; MD: mean difference; RR: risk ratio

\* The trials at high risk of bias were also the trials of the subgroup at high risk of failure.

\*\* Two trials with a high risk of failure and one trial with a low risk of failure were excluded.

## DISCUSSION

### Summary of main results

We have summarised the results in the [Summary of findings for the main comparison](#).

We identified 11 trials conducted in the United States, Europe, Asia and Africa. Five studies enrolled participants at low risk of trabeculectomy failure, five studies enrolled participants at high



risk of failure, and one study enrolled people with both high and low risk of failure. None of the included trials enrolled participants with combined trabeculectomy/cataract surgery.

We considered one study to be at low risk of bias in all domains, six studies at high risk of bias in one or more domains, and the remaining four studies at an unclear risk of bias.

Our review showed that the risk of failure of trabeculectomy at one year after surgery was lower in those participants treated with MMC compared to those treated with 5-FU. However, the estimate of effect was imprecise, and we cannot exclude important differences. All 11 RCTs contributed to this finding with an overall mixed study population and varied methodology of antimetabolite application. Although MMC appeared to have a greater success and more of an IOP-lowering effect in the higher-risk populations, we detected no significant difference between the subgroups of participants at low and high risk of failure in these analyses. We identified no difference between the visual outcomes of the people receiving MMC or 5-FU at one year postoperatively nor in the number of drops used postoperatively.

Evaluation of postoperative complications showed that there was a higher incidence of epitheliopathy and hyphaema when using 5-FU compared to MMC. However, we found those participants who received MMC to have more reported bleb leaks, wound leaks, late hypotony and cataract formation than those who received 5-FU. The quality of the evidence was low given that in general adverse outcomes were rare, and hence estimates of effect were imprecise. Although there were trends, any real significance cannot be determined from this review alone.

None of the studies reported quality of life.

### Overall completeness and applicability of evidence

This review is limited owing to the small numbers of and large variability between studies, for example in participant demographics, methodology, masking of participants and varied follow-up. Some of the included studies had only 20 or 30 participants in their study population, which contrasts with the largest study, which had 115 participants.

After many years of widespread use of antimetabolite agents, uncertainty remains about the relative benefits and harms of their use in trabeculectomy surgery. Newer agents and techniques may be developed and evaluated to then eventually take over the role of antimetabolites.

The majority of studies were carried out in the United States, although we included studies from European, Asian, African and Middle Eastern countries. Two of the included papers, one in Chinese and one in Italian, were translated. The analysis has taken into account the risk of failure of each study population and reported the risk as high or low. This is important when interpreting the results in a clinical setting in order to reflect the practice population. However, results showed a similar trend between high- and low-risk participants, which perhaps may be due to the inclusion of poor-quality evidence as discussed.

### Quality of the evidence

Overall, we graded the quality of the evidence as low, in most cases because of risk of bias in the included studies and imprecision

in the estimate of effect. One commonly encountered bias came from the difficulty in masking participants and surgeons owing to the different techniques of antimetabolite administration. All studies included in the review were RCTs, but the variability in outcome reporting reduced the quality of the evidence for some outcomes. Each study group reported few complications, which subsequently led to small numbers being incorporated into the analysis of complications.

### Potential biases in the review process

We identified no obvious bias from the review process.

### Agreements and disagreements with other studies or reviews

Fendi 2013 completed a meta-analysis that showed significantly higher success rates with the use of MMC when compared with 5-FU. This analysis included only five studies with participants who had received previous surgical treatment. Lin 2012 found in an analysis of eight studies that MMC achieved a significantly lower postoperative IOP than 5-FU, but MMC and 5-FU were comparable in achieving success. Likewise, Abdu 2010 found similar results to both Lin 2012 and this review with little difference between the two antimetabolites at achieving success. Abdu 2010 also found that there was no difference in the mean postoperative IOP between participants who received MMC and participants who received 5-FU and suggest that further research in this area would enhance results to determine any true superiority of either MMC or 5-FU.

## AUTHORS' CONCLUSIONS

### Implications for practice

This review provided low-quality evidence that to achieve lower IOP following trabeculectomy MMC may be a more effective antimetabolite than 5-FU across both high- and low-risk populations. The risk associated with using either MMC or 5-FU as an antimetabolite in a routine trabeculectomy was low given the infrequent reporting of adverse outcomes.

### Implications for research

Antimetabolites are a widely used adjunct in trabeculectomy surgery to help achieve lower postoperative IOP. However, the use of these medications may be associated with an increased risk of sight-threatening complications, predominantly due to the toxic effects on the conjunctiva and Tenon's capsule.

Further comparative research on MMC and 5-FU would be required to enhance reliability and validity of the results shown in this review. However, the development of newer, safer agents to control wound healing in glaucoma surgery may be of more benefit to patients in the longer term. These future agents would require full evaluation with well-designed trials to become integrated into clinical practice, particularly through the inclusion of trials with higher power to detect minimally important clinical differences and to consider cost and patient-orientated outcomes.

## ACKNOWLEDGEMENTS

The Cochrane Eyes and Vision Group created and executed the electronic searches. We thank Catey Bunce, Tianjing Li and Mark Wilkins for providing comments on the protocol for this review

and Richard Wormald and Anupa Shah for their assistance on the protocol. We thank Marie Diener-West and Anthony King for

their comments on the review and also Hsin-wen Amanda Wu for translation services for the review.

## REFERENCES

**References to studies included in this review**
**Katz 1995** {published data only}

Katz GJ, Higginbotham EJ, Lichter PR, Skuta GL, Musch DC, Bergstrom TJ, et al. Mitomycin C versus 5-fluorouracil in high-risk glaucoma filtering surgery. Extended follow-up. *Ophthalmology*. 1995;**102**(9):1263-9.

Skuta GL, Beeson CC, Higginbotham EJ, Lichter PR, Musch DC, Bergstrom TJ, et al. Intraoperative mitomycin versus postoperative 5-fluorouracil in high-risk glaucoma filtering surgery. *Ophthalmology* 1992;**99**(3):438-44.

**Kitazawa 1991** {published data only}

Kitazawa Y, Kawase K, Matsushita H, Minobe M. Trabeculectomy with mitomycin. A comparative study with fluorouracil. *Archives of Ophthalmology*. 1991;**109**(12):1693-8.

**Lamping 1995** {published data only}

Lamping KA, Belkin JK. 5-Fluorouracil and mitomycin C in pseudophakic patients. *Ophthalmology* 1995;**102**(1):70-5.

**Mostafaei 2011** {published data only}

Mostafaei A. Augmenting trabeculectomy in glaucoma with subconjunctival mitomycin C versus subconjunctival 5-fluorouracil: A randomized clinical trial. *Clinical Ophthalmology* 2011;**5**(1):491-4.

**Singh 1997** {published data only}

Singh K, Byrd S, Egbert PR, Budenz D. Risk of hypotony after primary trabeculectomy with antifibrotic agents in a black west African population. *Journal of Glaucoma*. 1998;**7**(2):82-5.

Singh K, Egbert PR, Byrd S, Budenz DL, Williams AS, Decker JH, et al. Trabeculectomy with intraoperative 5-fluorouracil vs mitomycin C. *American Journal of Ophthalmology*. 1997;**123**(1):48-53.

**Singh 2000** {published data only}

Singh K, Mehta K, Shaikh NM, Tsai JC, Moster MR, Budenz DL, et al. Trabeculectomy with intraoperative mitomycin C versus 5-fluorouracil. Prospective randomized clinical trial. *Ophthalmology*. 2000;**107**:2305-9.

**Sisto 2007** {published data only}

Sisto D, Vetrugno M, Trabucco T, Cantatore F, Ruggeri G, Sborgia C. The role of antimetabolites in filtration surgery for neovascular glaucoma: intermediate-term follow-up. *Acta Ophthalmologica Scandinavica* 2007;**85**(3):267-71.

**Uva 1996** {published data only}

Uva MG, Panta G, Avitabile T, Ott JP, Reibaldi A. Comparative study on intraoperative low dose MMC versus intraoperative 5-FU in primary open angle glaucoma [Studio comparativo sull'uso intra-operatorio di mitomicina C a basso dosaggio versus 5-FU nel glaucoma primario ad angolo aperto]. *Bollettino di Oculistica* 1996;**75**(2):209-19.

**WuDunn 2002** {published data only}

WuDunn D, Cantor LB, Palanca-Capistrano AM, Hoop J, Alvi NP, Finley C, et al. A prospective randomized trial comparing intraoperative 5-fluorouracil vs mitomycin C in primary trabeculectomy. *American Journal of Ophthalmology*. 2002;**134**(4):521-8.

**Xinyu 2001** {published data only}

Xinyu C, Xiaoning L, Denglei W. Application of mitomycin C and 5-Fluorouracil in the glaucoma filtering surgery. *Chinese Ophthalmic Research* 2001;**19**:347-9.

**Zadok 1995** {published data only}

Zadok D, Zadok J, Turetz J, Krakowski D, Nemet P. Intraoperative mitomycin versus postoperative 5-fluorouracil in primary glaucoma filtering surgery. *Annals of Ophthalmology Glaucoma* 1995;**27**(6):336-40.

**References to studies excluded from this review**
**Ashworth 2003** {published data only}

Ashworth JL, Mahmood S, Spencer AF, Grigg J. Assessment and modulation of bleb vascularity after enhanced trabeculectomy in high-risk patients. *Clinical and Experimental Ophthalmology* 2003;**31**:24-8.

**Dreyer 1995** {published data only}

Dreyer EB, Chaturvedi N, Zurakowski D. Effect of mitomycin C and fluorouracil-supplemented trabeculectomies on the anterior segment. *Archives of Ophthalmology* 1995;**113**(5):578-80.

**Li 2001** {published data only}

Li J, Pang L. Influence on tear film postoperative 5-fluorouracil and intraoperative mitomycin C in glaucoma filtration surgery. *Chinese Journal of Ophthalmology* 2001;**37**(1):43-7.

**Membrey 2000** {published data only}

Membrey WL, Poinosawmy DP, Bunce C, Hitchings RA. Glaucoma surgery with or without adjunctive antiproliferatives in normal tension glaucoma: 1 Intraocular pressure control and complications. *British Journal of Ophthalmology* 2000;**84**(6):586-90.

**Membrey 2001** {published data only}

Membrey WL, Bunce C, Poinosawmy DP, Fitzke FW, Hitchings RA. Glaucoma surgery with or without adjunctive antiproliferatives in normal tension glaucoma: 2 Visual field progression. *British Journal of Ophthalmology* 2001;**85**(6):696-701.

**Oh 1994** {published data only}

Oh SY, Youn DH, Kim DM, Hong C. The effects of intraoperative mitomycin-C or 5-fluorouracil on glaucoma filtering surgery. *Korean Journal of Ophthalmology* 1994;**8**(1):6-13.

**Rodriguez-Bermejo 1993** {published data only}

\* Rodriguez-Bermejo C, Montero P, Perez-Santonja JJ, Meza J, Gasco JL, Zato Gomez De Liano MA. Comparative study of chemotherapy agents as contribution in chronic simple glaucoma surgery [Estudio Comparativo De Agentes Quimioterapicos Como Coadyuvantes A La Cirugia Del Glaucoma Cronico Simple]. *Archivos de la Sociedad Espanola de Oftalmologia* 1993;**65**(5):441-8.

**References to studies awaiting assessment**
**Liu 2015** {published data only}

Liu LJ, Xiao BW. Clinical efficacy and safety of glaucoma filtration surgery combined with the application of 5-fluorouracil. *International Eye Science* 2015;**15**(1):38-40.

**Susanna 1995** {published data only}

Susanna Jr R, Takahashi WY. A comparative study between mitomycin and 5-FU to combined surgery. [Portuguese]. *Revista Brasileira De Oftalmologia* 1995;**54**:485-8.

**Yamamoto 1997** {published data only}

Yamamoto S, Suzuki K, Fujita K, Yuguchi T, Kaiya T, Iwata K. Prognosis for trabeculectomy with mitomycin C. [Japanese]. *Folia Ophthalmologica Japonica* 1997;**48**:140-3.

**Additional references**
**Abdu 2010**

Abdu M, Chen XY, Kadir J, Arkin A. Mytomycin C versus 5-fluorouracil for trabeculectomy: A systematic review. *Chinese Journal of Evidence-Based Medicine* 2010;**10**(6):730-9.

**AGIS 1998**

The Advanced Glaucoma Intervention Study. The Advanced Glaucoma Intervention Study (AGIS): 4. Comparison of treatment outcomes within race. Seven-year results. *Ophthalmology* 1998;**105**(7):1146-64.

**Andreanos 1997**

Andreanos D, Georgopoulos GT, Vergados J, Papaconstantinou D, Liokis N, Theodossiadis P. Clinical evaluation of the effect of mitomycin-C in re-operation for primary open angle glaucoma. *European Journal of Ophthalmology* 1997;**7**(1):49-54.

**Burr 2012**

Burr J, Azuara-Blanco A, Avenell A, Tuulonen A. Medical versus surgical interventions for open angle glaucoma. *Cochrane Database of Systematic Reviews* 2012, Issue 9. [DOI: [10.1002/14651858.CD004399.pub3](https://doi.org/10.1002/14651858.CD004399.pub3)]

**Cairns 1968**

Cairns JE. Trabeculectomy. Preliminary report of a new method. *American Journal of Ophthalmology* 1968;**66**(4):673-9.

**Carlson 1997**

Carlson DW, Alward WL, Barad JP, Zimmerman MB, Carney BL. A randomized study of mitomycin augmentation in combined

phacoemulsification and trabeculectomy. *Ophthalmology* 1997;**104**(4):719-24.

**CNTGS 1998**

Collaborative Normal-Tension Glaucoma Study Group. Comparison of glaucomatous progression between untreated patients with normal-tension glaucoma and patients with therapeutically reduced intraocular pressures. *American Academy of Ophthalmology* 1998;**126**:487-97.

**Cohen 1996**

Cohen JS, Greff LJ, Novack GD, Wind BE. A placebo-controlled, double-masked evaluation of mitomycin C in combined glaucoma and cataract procedures. *Ophthalmology* 1996;**103**(11):1934-42.

**Costa 1996**

Costa VP, Comegno PE, Vasconcelos JP, Malta RF, Jose NK. Low-dose mitomycin C trabeculectomy in patients with advanced glaucoma. *Journal of Glaucoma* 1996;**5**(3):193-9.

**DeBry 2002**

DeBry PW, Perkins TW, Heatley G, Kaufman P, Brumback LC. Incidence of late-onset bleb-related complications following trabeculectomy with mitomycin. *Archives of Ophthalmology* 2002;**120**(3):297-300.

**Dhingra 2009**

Dhingra S, Khaw PT. The Moorfields Safer Surgery System. *Middle East African Journal of Ophthalmology* 2009;**16**(3):112-5.

**EGS 2003**

European Glaucoma Society. Terminology and guidelines for glaucoma. [www.oogheelkunde.org/uploads/4D/w6/4Dw6MftS95uSq8OajRtEDQ/EGS-2nd.pdf](http://www.oogheelkunde.org/uploads/4D/w6/4Dw6MftS95uSq8OajRtEDQ/EGS-2nd.pdf) (accessed 11 April 2012).

**Fendi 2013**

Fendi L, Arruda G, Scott I, Paula J. Mitomycin C versus 5-fluorouracil as an adjunctive treatment for trabeculectomy: a meta-analysis of randomized clinical trials. *Clinical and Experimental Ophthalmology* 2013;**41**(8):798-806.

**FFSG 1989**

The Fluorouracil Filtering Surgery Study Group. Fluorouracil Filtering Surgery Study one-year follow-up. The Fluorouracil Filtering Surgery Study Group. *American Journal of Ophthalmology* 1989;**108**(6):625-35.

**Glanville 2006**

Glanville JM, Lefebvre C, Miles JN, Camosso-Stefinovic J. How to identify randomized controlled trials in MEDLINE: ten years on. *Journal of the Medical Library Association* 2006;**94**(2):130-6.

**Goldenfeld 1994**

Goldenfeld M, Krupin T, Ruderman JM, Wong PC, Rosenberg LF, Ritch R, et al. 5-Fluorouracil in initial trabeculectomy. A prospective, randomized, multicenter study. *Ophthalmology* 1994;**101**(6):1024-9.

**Green 2014**

Green E, Wilkins M, Bunce C, Wormald R. 5-Fluorouracil for glaucoma surgery. *Cochrane Database of Systematic Reviews* 2014, Issue 2. [DOI: [10.1002/14651858.CD001132.pub2](https://doi.org/10.1002/14651858.CD001132.pub2)]

**Heijl 2002**

Heijl A, Leske MC, Bengtsson B, Hyman L, Bengtsson B, Hussein M. Reduction of intraocular pressure and glaucoma progression: results from the Early Manifest Glaucoma Trial. *Archives of Ophthalmology* 2002;**120**(10):1268-79.

**Higgins 2002**

Higgins JP, Thompson SG. Quantifying heterogeneity in a meta-analysis. *Statistics in Medicine* 2002;**21**(11):1539-58.

**Higgins 2011**

Higgins JPT, Altman DG, Sterne JAC (editors). Chapter 8: Assessing risk of bias in included studies. In: Higgins JPT, Green S (editors). *Cochrane Handbook for Systematic Reviews of Interventions* Version 5.1.0 (updated March 2011). The Cochrane Collaboration, 2011. Available from [www.cochrane-handbook.org](http://www.cochrane-handbook.org).

**Kass 2002**

Kass MA, Heuer DK, Higginbotham EJ, Johnson CA, Keltner JL, Miller JP, et al. The Ocular Hypertension Treatment Study: a randomized trial determines that topical ocular hypotensive medication delays or prevents the onset of primary open-angle glaucoma. *Archives of Ophthalmology* 2002;**120**(6):701-13.

**Lin 2012**

Lin Z, Li Y, Cheng J, Lu X. Intraoperative mitomycin C versus intraoperative 5-fluorouracil for trabeculectomy: a systematic review and meta-analysis. *Journal of Ocular Pharmacology and Therapeutics* 2012;**28**(2):166-73.

**Maier 2005**

Maier PC, Funk J, Schwarzer G, Antes G, Falck-Ytter YT. Treatment of ocular hypertension and open angle glaucoma: meta-analysis of randomised controlled trials. *BMJ* 2005;**331**:134.

**Martini 1997**

Martini E, Laffi GL, Sprovieri C, Scorolli L. Low-dosage mitomycin C as an adjunct to trabeculectomy. A prospective controlled study. *European Journal of Ophthalmology* 1997;**7**(1):40-8.

**Migdal 1994**

Migdal C, Gregory W, Hitchings R. Long-term functional outcome after early surgery compared with laser and medicine in open-angle glaucoma. *Ophthalmology* 1994;**101**(10):1651-6.

**Ophir 1992**

Ophir A, Ticho U. A randomized study of trabeculectomy and subconjunctival administration of fluorouracil in primary glaucomas. *Archives of Ophthalmology* 1992;**110**(8):1072-5.

**RevMan 2014 [Computer program]**

The Nordic Cochrane Centre. The Cochrane Collaboration. Review Manager (RevMan). Version 5.3. Copenhagen: The Nordic Cochrane Centre. The Cochrane Collaboration, 2014.

**Robin 1997**

Robin AL, Ramakrishnan R, Krishnadas R, Smith SD, Katz JD, Selvaraj S, et al. A long-term dose-response study of mitomycin in glaucoma filtration surgery. *Archives of Ophthalmology* 1997;**115**(8):969-74.

**Ruderman 1987**

Ruderman JM, Welch DB, Smith MF, Shoch DE. A prospective, randomized study of 5-fluorouracil and filtration surgery. *Transactions of the American Ophthalmological Society* 1987;**85**:238-53.

**Shin 1995**

Shin DH, Simone PA, Song MS, Reed SY, Juzych MS, Kim C, et al. Adjunctive subconjunctival mitomycin C in glaucoma triple procedure. *Ophthalmology* 1995;**102**(10):1550-8.

**Shin 1998**

Shin DH, Kim YY, Sheth N, Ren J, Shah M, Kim C, et al. The role of adjunctive mitomycin C in secondary glaucoma triple procedure as compared to primary glaucoma triple procedure. *Ophthalmology* 1998;**105**:740-5.

**Vass 2007**

Vass C, Hirn C, Sycha T, Findl O, Bauer P, Schmetterer L. Medical interventions for primary open angle glaucoma and ocular hypertension. *Cochrane Database of Systematic Reviews* 2007, Issue 4. [DOI: [10.1002/14651858.CD003167.pub3](https://doi.org/10.1002/14651858.CD003167.pub3)]

**Wilkins 2010**

Wilkins M, Indar A, Wormald R. Intraoperative Mitomycin C for glaucoma surgery. *Cochrane Database of Systematic Reviews* 2010, Issue 2. [DOI: [10.1002/14651858.CD002897.pub2](https://doi.org/10.1002/14651858.CD002897.pub2)]

**Wu 1996**

Wu L, Yin J. The effect of mitomycin C on filtration surgery of glaucoma with poor prognosis. *Zhonghua Yan Ke Za Zhi* 1996;**32**:32-4.

**References to other published versions of this review**
**Clarke 2006**

Clarke JCK, Schlottmann PG. Mitomycin C versus 5-Fluorouracil for wound healing in glaucoma surgery. *Cochrane Database of Systematic Reviews* 2006, Issue 4. [DOI: [10.1002/14651858.CD006259](https://doi.org/10.1002/14651858.CD006259)]

\* Indicates the major publication for the study

## CHARACTERISTICS OF STUDIES

### Characteristics of included studies [ordered by study ID]

#### Katz 1995

Methods	Parallel-group randomised controlled trial, 1 eye per person	
Participants	Country: USA  Number of participants (eyes): 39 (39)  % women: 67%  Average age: 63 years (range not reported)  Risk of trabeculectomy failure: high  Inclusion criteria: <ul style="list-style-type: none"> <li>• requiring trabeculectomy</li> <li>• history of prior cataract surgery, uveitic glaucoma, neovascular glaucoma, or previously failed filtering surgery</li> </ul> Exclusion criteria: <ul style="list-style-type: none"> <li>• younger than 18 years</li> <li>• corneal decompensation</li> </ul>	
Interventions	<ul style="list-style-type: none"> <li>• MMC (20 eyes)             <ul style="list-style-type: none"> <li>◦ Application: 1 intraoperative application</li> <li>◦ Dose: 0.5 mg/ml for 5 minutes</li> <li>◦ Location: between the conjunctiva and the episclera (n = 20 eyes)</li> </ul> </li> <li>• 5-FU (19 eyes)             <ul style="list-style-type: none"> <li>◦ Application: 10 postoperative injections (daily for 1 week, 3 times in following week)</li> <li>◦ Dose: 5 mg</li> <li>◦ Location: subconjunctival</li> </ul> </li> </ul> <p>All surgeries involved a limbus-based conjunctival flap. Scleral flap was closed by 10-0 nylon sutures. Postoperative topical steroids were used in all participants and tapered over several weeks. 4 surgeons were involved in the study</p>	
Outcomes	Postoperative IOP  Number of glaucoma medications used  Change in visual acuity  Follow-up: 1 and 2 years	
Notes	Date study conducted: May 1990 to March 1991  Conflict of interest: None declared  Funding source: Not reported	
<b>Risk of bias</b>		
<b>Bias</b>	<b>Authors' judgement</b>	<b>Support for judgement</b>
Random sequence generation (selection bias)	Unclear risk	Stated "randomised" but no elaboration of methods used

**Katz 1995** (Continued)

Allocation concealment (selection bias)	Unclear risk	No mention of patient concealment of allocation
Blinding (performance bias and detection bias) All outcomes	High risk	Surgical method varied between both the groups, so masking for the surgeon and participant was impossible. No mention as to masking during the follow-up period
Incomplete outcome data (attrition bias) All outcomes	Low risk	Complete follow-up recorded for all participants with recognition of participants lost to follow-up.
Selective reporting (reporting bias)	Low risk	All intended outcomes were identified and discussed
Other bias	High risk	<p>Participants may have received different postoperative treatment: "The use of antibiotics, cycloplegics, digital massage and laser suture lysis were left to the discretion of the surgeon".</p> <p>Participants received different doses of 5-FU (average 46.0 mg, +/- 4.9 mg)</p>

**Kitazawa 1991**

Methods	Parallel-group randomised controlled trial, 1 eye per person
Participants	<p>Country: Japan</p> <p>Number of participants (eyes): 32 (32)</p> <p>% women: 38%</p> <p>Average age: 47 years (range 22 to 81)</p> <p>Risk of trabeculectomy failure: high</p> <p>Inclusion criteria:</p> <ul style="list-style-type: none"> <li>failure of medical treatment to control IOP</li> <li>2 or more failed trabeculectomies, neovascular glaucoma, inflammatory glaucoma, congenital glaucoma, or aphakia</li> </ul> <p>Exclusion criteria: not reported</p>
Interventions	<ul style="list-style-type: none"> <li>MMC (17 eyes)             <ul style="list-style-type: none"> <li>Application: 1 intraoperative sponge application</li> <li>Dose: 0.4 mg/ml for 5 minutes</li> <li>Location: underneath the conjunctival flap and beneath the scleral flap</li> </ul> </li> <li>5-FU (15 eyes)             <ul style="list-style-type: none"> <li>Application: 10 postoperative injections (each day for 1 week and every other day for the following week)</li> <li>Dose: 5 mg</li> <li>Location: subconjunctival, 90 to 180 degrees away from the surgical site</li> </ul> </li> </ul> <p>Following the trabeculectomy, 10-0 monofilament nylon suture was used for the scleral flap, and 10-0 nylon shoelace suture was used for the conjunctival wound closure. Postoperatively 1.2 mg of dexamethasone was injected subconjunctivally. Topical atropine and antibiotics were given at the time of surgery. 0.1% betamethasone, 1% atropine sulfate and 0.3% ofloxacin were used as a standard for all participants postop</p>

**Kitazawa 1991** (Continued)

Outcomes Mean IOP at 12 months

Category 1 success: IOP controlled without antiglaucoma medication

Category 2 success: IOP controlled with or without topical eye drops

Category 3 success: IOP controlled without any medication or with oral carbonic anhydrase inhibitors in addition to topical medication

Success was defined as IOP equal to or less than 20 mmHg without any medication.

Follow-up: 7 to 12 months

Notes Date study conducted: December 1989 to November 1990

Conflict of interest: None declared

Funding source: Research grant for Aging and Health from the Ministry of Health and Welfare, Japan

**Risk of bias**

Bias	Authors' judgement	Support for judgement
Random sequence generation (selection bias)	Unclear risk	No clear methods described. Significant difference between the ages of each group (P = 0.01)
Allocation concealment (selection bias)	Unclear risk	Randomly allocated to intervention groups, but no elaboration on method used
Blinding (performance bias and detection bias) All outcomes	High risk	No masking due to nature of 2 techniques of administration for the interventions, and no mention of follow-up masking
Incomplete outcome data (attrition bias) All outcomes	Unclear risk	No statements about attrition or exclusion made
Selective reporting (reporting bias)	Low risk	Stated outcome measures were reported
Other bias	Low risk	The study appears to be free from other bias

**Lamping 1995**

Methods Parallel-group randomised controlled trial, 1 or both eyes included

Participants Country: USA

Number of participants (eyes): 74 (80)

% women: 41%

Average age: 71 years (range not reported)

Risk of trabeculectomy failure: high

Inclusion criteria:

- medically uncontrolled glaucoma and posterior lens implants, requiring glaucoma filtration surgery



**Lamping 1995** (Continued)

Exclusion criteria:

- vitreous in the anterior chamber

**Interventions**

- MMC (40 eyes)
  - Application: 1 intraoperative sponge application
  - Dose: 0.4 mg/ml for 2.5 minutes
  - Location: between the conjunctival and scleral flap
- 5-FU (40 eyes)
  - Application: 10 postoperative injections (once daily for first 10 days)
  - Dose: 5 mg
  - Location: subconjunctival, 180 degrees away from the surgical site

No steroid or antibiotic was used at the time of surgery, but topical prednisolone, tobramycin and dexamethasone and atropine were applied postoperatively.

Single surgeon

**Outcomes**

Postoperative IOP

Follow-up: week 1, week 2 and months 1, 2, 3, 6, 9 and 12

**Notes**

Date study conducted: Not reported

Conflict of interest: None declared

Funding source: Not reported

**Risk of bias**

Bias	Authors' judgement	Support for judgement
Random sequence generation (selection bias)	Unclear risk	Consecutive eyes were selected, no random sequence generation mentioned
Allocation concealment (selection bias)	Unclear risk	Randomised allocation to each intervention group, but no elaboration of methods used
Blinding (performance bias and detection bias) All outcomes	High risk	No masking due to different methods of application of the 2 interventions, and no mention of follow-up masking
Incomplete outcome data (attrition bias) All outcomes	Low risk	Recognition of 1 postop complication that stopped the use of antimetabolite therapy in this participant. This participant was not excluded from the study
Selective reporting (reporting bias)	Low risk	Stated outcome measures were reported
Other bias	Low risk	Participants in the 5-FU group received varied amounts of antimetabolite due to withholding of treatments if indicated by complications. 8 participants did not receive the full dose. This was taken into account in the data analysis

**Mostafaei 2011**
**Methods**

Parallel-group randomised controlled trial, 1 eye per person

**Mostafaei 2011** (Continued)

Participants	Country: Iran  Number of participants (eyes): 40 (40)  % women: 19%  Average age: 68 years (range 48 to 83)  Risk of trabeculectomy failure: low  Inclusion criteria: <ul style="list-style-type: none"> <li>• open-angle glaucoma and uncontrolled IOP with evidence of optic nerve damage and visual field restriction</li> </ul> Exclusion criteria: none reported
Interventions	<ul style="list-style-type: none"> <li>• MMC (18 eyes)           <ul style="list-style-type: none"> <li>◦ Application: intraoperative</li> <li>◦ Dose: 0.02 mg</li> <li>◦ Location: subconjunctival, 180 degrees away from operating site</li> </ul> </li> <li>• 5-FU (22 eyes)           <ul style="list-style-type: none"> <li>◦ Application: intraoperative</li> <li>◦ Dose: 5 mg</li> <li>◦ Location: subconjunctival</li> </ul> </li> </ul>
Outcomes	Primary outcome of successful surgery defined as an IOP of 6 to 22 mmHg at 6 months postoperatively.  Secondary outcome: complications identified at the 6-month follow-up  IOP using Goldmann applanation  Complications  Follow-up: baseline, 2 weeks postoperatively, 1, 3 and 6 months
Notes	Date study conducted: Not reported  Conflict of interest: None declared  Funding source: Not reported

**Risk of bias**

Bias	Authors' judgement	Support for judgement
Random sequence generation (selection bias)	Unclear risk	Parallel trial design, but the details not described
Allocation concealment (selection bias)	Unclear risk	No report on concealment
Blinding (performance bias and detection bias) All outcomes	Unclear risk	No report on masking
Incomplete outcome data (attrition bias) All outcomes	Unclear risk	No report on loss to follow-up.  One reported complication of surgery was observed but it was not made clear to which study group this participant belonged to.

**Mostafaei 2011** *(Continued)*

Selective reporting (re-reporting bias)	Low risk	All intended outcomes were identified and reported
Other bias	Low risk	The study appeared to be free from other bias

**Singh 1997**

Methods	Parallel-group randomised controlled trial, 1 eye per person
Participants	<p>Country: Ghana</p> <p>Number of participants (eyes): 81 (81)</p> <p>% women: 40%</p> <p>Average age: 54 years (range not reported)</p> <p>Risk of trabeculectomy failure: high</p> <p>Inclusion criteria:</p> <ul style="list-style-type: none"> <li>• diagnosis of primary open-angle glaucoma</li> </ul> <p>Exclusion criteria:</p> <ul style="list-style-type: none"> <li>• No discussion about previous hypotensive drops. May have been primary trabeculectomies</li> </ul>
Interventions	<ul style="list-style-type: none"> <li>• MMC (44 eyes)           <ul style="list-style-type: none"> <li>◦ Application: intraoperative sponge</li> <li>◦ Dose: 0.5 mg/ml for 3.5 minutes</li> <li>◦ Location: between scleral flap and conjunctiva</li> </ul> </li> <li>• 5-FU (37 eyes)           <ul style="list-style-type: none"> <li>◦ Application: intraoperative sponge</li> <li>◦ Dose: 50 mg/ml for 5 minutes</li> <li>◦ Location: between scleral flap and conjunctiva</li> </ul> </li> </ul> <p>Limbal-based conjunctival flaps. Antimetabolite delivered with a sponge and thoroughly irrigated after required time. 5 surgeons with small variation on technique. Day 1 postop is when topical gentamycin, prednisolone acetate and atropine therapy started</p>
Outcomes	<p>IOP outcomes: &lt; 21 mmHg, &lt; 18 mmHg and &lt; 15 mmHg</p> <p>Visual acuity</p> <p>Postoperative complications</p> <p>Follow-up: Post-operative days 1, 3, 7 and 14 and then average longer term follow up of 10 months (+/- 4.41)</p>
Notes	<p>Date study conducted: Reported completed in 1995</p> <p>Conflict of interest: Not reported</p> <p>Funding source: Not reported</p>

**Risk of bias**

Bias	Authors' judgement	Support for judgement
------	--------------------	-----------------------

**Singh 1997** (Continued)

Random sequence generation (selection bias)	Low risk	Treated decided by the flick of a coin in the operating theatre
Allocation concealment (selection bias)	Low risk	Surgeons masked from allocation up until time of surgery (minimal influence)
Blinding (performance bias and detection bias) All outcomes	High risk	Surgeons were masked up until time of surgery but not thereafter. Method of administration of treatment similar between groups. Follow-up team were not masked as to which antimetabolite the participant had received
Incomplete outcome data (attrition bias) All outcomes	Unclear risk	Attempts made to contact missing participants. No description about the number of participants lost to follow-up. 81/85 participants had at least 3 months' follow-up
Selective reporting (reporting bias)	High risk	No stated outcomes in the methods
Other bias	Unclear risk	Insufficient information

**Singh 2000**

Methods	Parallel-group randomised controlled trial, 1 eye per person  Multicentre
Participants	Country: USA  Number of participants (eyes): 108 (108)  % women: not reported  Average age: 66 years (range not reported)  Risk of trabeculectomy failure: low  Inclusion criteria: <ul style="list-style-type: none"> <li>• primary open-angle glaucoma, pseudoexfoliative glaucoma, or pigmentary glaucoma</li> <li>• poorly controlled IOP despite maximal topical treatment</li> </ul> Exclusion criteria: <ul style="list-style-type: none"> <li>• previous conjunctival or intraocular surgery</li> </ul>
Interventions	<ul style="list-style-type: none"> <li>• MMC (54 eyes)           <ul style="list-style-type: none"> <li>◦ Application: intraoperative</li> <li>◦ Dose: 0.4 mg/ml for 2 minutes</li> <li>◦ Location: not stated</li> </ul> </li> <li>• 5-FU (54 eyes)           <ul style="list-style-type: none"> <li>◦ Application: intraoperative</li> <li>◦ Dose: 50 mg/ml for 5 minutes</li> <li>◦ Location: not stated</li> </ul> </li> </ul> <p>Limbal-based conjunctival flaps, closed with 8-0 or 9-0 polyglactin 910 (Vicryl) suture. Antimetabolite delivered with a sponge and thoroughly irrigated after required time. 18 surgeons were involved in the study. 8 centres</p>
Outcomes	This is the preliminary report with plans to extend follow-up time.

**Mitomycin C versus 5-Fluorouracil for wound healing in glaucoma surgery (Review)**

**Singh 2000** (Continued)

Main outcome measures were IOP and proportion of participants achieving successful outcomes, with varying IOP criteria for success (< 21 mmHg, < 18 mmHg, < 15 mmHg and < 12 mmHg). Post-operative visual acuity, complications and use of IOP-lowering medications were also included in the follow up data.

Notes  
Date study conducted: December 1996  
Conflict of interest: None declared  
Funding source: Not reported

**Risk of bias**

Bias	Authors' judgement	Support for judgement
Random sequence generation (selection bias)	Low risk	Randomisation performed using a modified Moses-Oakford algorithm, and the randomisation envelope mailed to the study co-ordinators at the respective sites
Allocation concealment (selection bias)	Low risk	Participating surgeons were masked with regard to antimetabolite use until after participant enrolment into the study and written informed consent
Blinding (performance bias and detection bias) All outcomes	Unclear risk	Surgeons were masked with regard to antimetabolite use until after participant enrolment into the study. Participants and follow-up period were not masked
Incomplete outcome data (attrition bias) All outcomes	Low risk	5 participants not included in analysis due to lack of pre- or intraoperative information
Selective reporting (reporting bias)	Low risk	Stated outcome measures in the methods were reported in the results
Other bias	Low risk	The study appears free of other sources of bias

**Sisto 2007**

Methods	Parallel-group randomised controlled trial, 1 eye per person
Participants	Country: Italy Number of participants (eyes): 40 (40) % women: 35% Average age: 61 years (range 36 to 75) Risk of trabeculectomy failure: high Inclusion criteria: <ul style="list-style-type: none"> <li>• neovascular glaucoma</li> <li>• IOP &lt; 21 mmHg and resistant to medical therapy</li> <li>• no previous ocular surgery</li> <li>• best corrected visual acuity &gt; -1.5 logMAR units</li> </ul> Exclusion criteria: not reported

**Sisto 2007** (Continued)

- Interventions
- MMC (22 eyes)
    - Application: intraoperative sponge application
    - Dose: 0.2 mg/ml for 2 minutes
    - Location: between the sclera and the Tenon's capsule
  - 5-FU (18 eyes)
    - Application: postoperative injections, commencing on day 7, 2 injections per week for 2 weeks and then 1 injection per week for 6 weeks
    - Dose: 0.1 ml of 50 mg/ml
    - Location: subconjunctival injections near the bleb

Fornix-based conjunctival flaps with single surgeon. No releasable sutures or suture lysis employed

Outcomes

Success defined as IOP < 21 mmHg at final postoperative visit.

Qualified success defined if IOP < 21 mmHg with addition of topical treatment. Failure is uncontrolled IOP equal or above 21 mmHg or vision dropped to no perception of light.

Follow-up: every 3 months in the first year, every 6 months thereafter to maximum 60 months (5 years)

Notes

Date study conducted: January 1993 to November 2000

Conflict of interest: Not reported

Funding source: Not reported

**Risk of bias**

Bias	Authors' judgement	Support for judgement
Random sequence generation (selection bias)	Low risk	40 consecutive people with neovascular glaucoma selected. "All eyes had been assigned with a computer generated randomization code."
Allocation concealment (selection bias)	Unclear risk	No statement made
Blinding (performance bias and detection bias) All outcomes	Low risk	Surgeon not masked due to technique, but the follow-up staff were masked on collecting postoperative data
Incomplete outcome data (attrition bias) All outcomes	Low risk	All participant data included in analysis. However, length of follow-up was variable and no statement was made regarding the participants lost to follow-up.
Selective reporting (reporting bias)	Low risk	Success criteria defined in the methods
Other bias	Unclear risk	No attempted power calculations

**Uva 1996**

Methods

Parallel-group randomised controlled trial, 1 eye per person

Participants

Country: Italy

Number of participants (eyes): 30 (30)

**Uva 1996** (Continued)

% women: 47%

Average age: 54.1 years (range 45 to 60)

Risk of trabeculectomy failure: low

Inclusion criteria:

- primary open-angle glaucoma uncontrolled with medication or laser therapy

Exclusion criteria:

- previous ocular surgery
- aged 60 years or more
- had been on antiglaucoma medication for less than 3 years

**Interventions**

- MMC (15 eyes)
  - Application: intraoperative sponge application
  - Dose: 0.2 mg/ml for 2 minutes
  - Location: between the sclera and the Tenon's capsule
- 5-FU (15 eyes)
  - Application: intraoperative sponge application
  - Dose: 50 mg/ml was applied for 5 minutes
  - Location: between the sclera and the Tenon's capsule

Limbal flap was used that was closed with 10-0 nylon suture. 1% atropine, antibiotic and steroid was applied at the time of surgery. Conjunctiva was closed with 8-0 polyglactin synthetic suture

**Outcomes**

Postoperative IOP

Visual acuity

Postoperative complications

Follow-up: Mean follow-up 292 days +/- 46.1 days

**Notes**

Date study conducted: Not reported

Conflict of interest: Not reported

Funding source: Not reported

**Risk of bias**

Bias	Authors' judgement	Support for judgement
Random sequence generation (selection bias)	Low risk	Randomised with a "table of numbers" technique
Allocation concealment (selection bias)	Unclear risk	No statement made
Blinding (performance bias and detection bias) All outcomes	Unclear risk	Participant masking carried out given same surgical procedure for both antimetabolite interventions. Surgeons are presumed to not be masked given different duration of antimetabolite application. No mention of follow-up masking
Incomplete outcome data (attrition bias) All outcomes	Low risk	Commented on all intended outcomes. Short period of follow-up with all participants recorded within similar follow-up period

**Uva 1996** (Continued)

Selective reporting (reporting bias)	Low risk	Stated outcome measures in the methods were reported in the results
Other bias	Unclear risk	No obvious further bias

**WuDunn 2002**

Methods	Parallel-group randomised controlled trial, 1 or both eyes per person
Participants	<p>Country: USA</p> <p>Number of participants (eyes): 103 (115)</p> <p>% women: 44%</p> <p>Average age: 65 years</p> <p>Risk of trabeculectomy failure: low</p> <p>Inclusion criteria:</p> <ul style="list-style-type: none"> <li>poorly controlled IOP despite maximal tolerated medical treatment</li> <li>primary open-angle glaucoma, pigmentary glaucoma, chronic angle-closure glaucoma, secondary glaucoma and pseudoexfoliation</li> </ul> <p>Exclusion criteria:</p> <ul style="list-style-type: none"> <li>previous intraocular surgery</li> </ul>
Interventions	<ul style="list-style-type: none"> <li>MMC (58 eyes)           <ul style="list-style-type: none"> <li>Application: intraoperative sponge application</li> <li>Dose: 0.2 mg/ml for 2 minutes</li> <li>Location: not stated</li> </ul> </li> <li>5-FU (57 eyes)           <ul style="list-style-type: none"> <li>Application: intraoperative sponge application</li> <li>Dose: 50 mg/ml for 5 minutes</li> <li>Location: not stated</li> </ul> </li> </ul> <p>Limbal-based conjunctival flaps, closed with 8-0 polyglactin 910 (Vicryl) suture. Antimetabolite was delivered with a cellulose sponge and thoroughly irrigated after required time. The application was divided into 2 phases to allow surgeon masking through same time of antimetabolite/sham application. Corticosteroid, antibiotic ointment and atropine were instilled at the time of surgery. Postoperatively, all eyes received 1% prednisolone acetate, 1% atropine and an antibiotic</p>
Outcomes	<ul style="list-style-type: none"> <li>Target IOP outcomes &lt; 22, 19, 16, 13 with or without additional topical treatment were stated, and the IOP reduction had to be greater than 20%.</li> <li>Visual acuity</li> <li>Glaucoma medication needs</li> <li>Complications</li> <li>Fail defined as those participants whose preoperative IOP was less than 21 and did not have a 20% reduction; whose postoperative IOP was above the target level; or if further surgery to control IOP was required.</li> <li>Follow-up: 6 and 12 months</li> </ul>
Notes	<p>Date study conducted: 1997 to 2001</p> <p>Conflict of interest: Not reported</p>



**WuDunn 2002** (Continued)

Funding source: Research to Prevent Blindness, Inc, New York, New York

NCT00346489

**Risk of bias**

Bias	Authors' judgement	Support for judgement
Random sequence generation (selection bias)	Low risk	The assignment schedule was generated in blocks of 50 (25 per group) by a study co-ordinator who was not involved in the surgical procedure or clinical care. If the second eye of the participant was also enrolled, it was assigned to the opposite group of the first eye
Allocation concealment (selection bias)	Low risk	Group assignment was made randomly on the day of the surgery by the study co-ordinator and relayed directly to the operating room circulating nurse who prepared the antimetabolite solutions
Blinding (performance bias and detection bias) All outcomes	Low risk	<p>Only the study co-ordinator and the circulating nurse knew the allocation. The assignment code was kept in a locked drawer in the office of the study coordinator. The code was broken at 6 months postoperative to allow data analysis.</p> <p>Surgeons were kept masked by using the same colour solution and the same duration of sponge application for both intervention groups (the MMC group had 3-minute application of balanced salt solution to equal the 5-minute 5-FU group in total)</p>
Incomplete outcome data (attrition bias) All outcomes	Low risk	Clearly identified participants: 1 participant in each group failed to reach 6-month follow-up. By 1 year, the lost to follow-up were 9 in the 5-FU group and 4 in the MMC group.
Selective reporting (reporting bias)	Low risk	Stated outcome measures in the methods were reported in the results
Other bias	Low risk	The study appears free of other sources of bias

**Xinyu 2001**

Methods	Parallel-group randomised controlled trial, 1 or both eyes included
Participants	Country: China  Number of participants (eyes): 98 (108)  % women: 57%  Average age: 54 years (range 16 to 76)  Risk of trabeculectomy failure: Mixed population: mostly low-risk population, 4 participants with previous surgery were termed "high risk"  Inclusion criteria:  Of those in the 5-FU group, 33 eyes were angle-closure glaucoma, 3 open-angle glaucoma, 2 eyes had glaucoma recurrent following previous control and 2 with previous glaucoma surgery. Of those in the MMC group, 25 had angle-closure glaucoma, 2 open-angle, 1 recurrent and 2 with previous glaucoma surgery. In the control group, 33 had angle-closure glaucoma, 3 open-angle and 2 with recurrence.  Exclusion criteria: Not mentioned

**Xinyu 2001** (Continued)

- Interventions
- MMC (30 eyes)
    - Application: intraoperative sponge application
    - Dose: 0.2 mg/ml for 5 minutes
    - Location: not stated
  - 5-FU (40 eyes)
    - Application: 6 to 8 postoperative injections on alternate days starting on day 3
    - Dose: 5 mg/ml for 5 minutes
    - Location: subconjunctival injections, 180 degrees away from the site of scleral flap

All surgeons used same standard surgical technique.

Control (untreated) group also included. (n = 38)

Outcomes

Measure of corneal scarring and corneal staining, postoperative IOP and occurrence of complications (conjunctivitis, vitreous detachment, hyphaema, corneal epithelial defect, hypotony and corneal ulcer).

Successful reduction in IOP defined as < 21.06 mmHg.

Follow-up: twice a week for 2 weeks, once a week for the subsequent 4 weeks, and then 1 or 2 times a month thereafter

Notes

Date study conducted: May 1995 to October 1999

Conflict of interest: Unable to ascertain with manuscript translation

Funding source: Unable to ascertain with manuscript translation

**Risk of bias**

Bias	Authors' judgement	Support for judgement
Random sequence generation (selection bias)	Unclear risk	Random division into groups, but no detail given
Allocation concealment (selection bias)	Unclear risk	No information of allocation methods
Blinding (performance bias and detection bias) All outcomes	High risk	Application methods different for all 3 groups, and therefore difficult to mask surgeons and participants.  Follow-up of participants varied between 3 and 34 months with no clear statement about minimum length of follow-up
Incomplete outcome data (attrition bias) All outcomes	Unclear risk	No mention of attrition/exclusion
Selective reporting (reporting bias)	Low risk	All intended outcomes were addressed
Other bias	Low risk	No other obvious bias identified

**Zadok 1995**

Methods

Parallel-group randomised controlled trial, 1 eye per person

Participants

Country: Israel

**Mitomycin C versus 5-Fluorouracil for wound healing in glaucoma surgery (Review)**

**Zadok 1995** (Continued)

Number of participants (eyes): 20 (20)

% women: 45%

Average age: 69 years (range not reported)

Risk of trabeculectomy failure: low

Inclusion criteria:

- uncontrolled primary open-angle glaucoma

Exclusion criteria: Not mentioned

**Interventions**

- MMC (10 eyes)
  - Application: intraoperative sponge application
  - Dose: 0.2 mg/ml for 5 minutes
  - Location: between the conjunctiva and episclera
- 5-FU (10 eyes)
  - Application: up to 7 postoperative injections, once daily in the first week after surgery
  - Dose: 5 mg
  - Location: subconjunctival injections, 180 degrees away from the site of surgery

Closure of scleral flap by 10-0 nylon sutures. Conjunctiva closed by running suture. All participants received 1% atropine sulphate twice daily for 4 weeks and dexamethasone 4 times daily, tapered over several weeks

**Outcomes**

IOP &lt; 21 mmHg as a primary outcome with or without antiglaucoma medication.

Follow-up: Participants reviewed at 1 week postoperatively, 2 weeks, 1, 2, 3, 6 and 12 months

**Notes**

Date study conducted: Not reported

Conflict of interest: Not reported

Funding source: Not reported

**Risk of bias**

<b>Bias</b>	<b>Authors' judgement</b>	<b>Support for judgement</b>
Random sequence generation (selection bias)	Unclear risk	No mention of method of selection. Randomised
Allocation concealment (selection bias)	Unclear risk	No mention of how participants were concealed from their respective allocation
Blinding (performance bias and detection bias) All outcomes	Low risk	Surgeons not masked given different administration techniques. Follow-up completed by masked professionals
Incomplete outcome data (attrition bias) All outcomes	Low risk	Evidence from Table 3 (IOP distributions at 6 and 12 months) that all participants in study reached full follow-up period
Selective reporting (reporting bias)	Low risk	All outcomes reported in manuscript
Other bias	Low risk	No other bias evident

5-FU: 5-Fluorouracil  
 IOP: intraocular pressure  
 MMC: mitomycin C

### Characteristics of excluded studies *[ordered by study ID]*

Study	Reason for exclusion
<a href="#">Ashworth 2003</a>	Prospective, non-randomised trial
<a href="#">Dreyer 1995</a>	Not a randomised controlled study. No data on intraocular pressure as an outcome, therefore does not match inclusion criteria
<a href="#">Li 2001</a>	Prospective, non-randomised trial
<a href="#">Membrey 2000</a>	Retrospective study
<a href="#">Membrey 2001</a>	Case-control; not a randomised controlled study
<a href="#">Oh 1994</a>	Random allocation not mentioned; no reply from authors to request for clarification
<a href="#">Rodriguez-Bermejo 1993</a>	Manuscript not available for review

### Characteristics of studies awaiting assessment *[ordered by study ID]*

#### [Liu 2015](#)

Methods	
Participants	
Interventions	
Outcomes	
Notes	Awaiting response from authors regarding our query on methods of randomisation

#### [Susanna 1995](#)

Methods	
Participants	
Interventions	
Outcomes	
Notes	Unable to locate copy of the report

**Yamamoto 1997**

Methods	
Participants	
Interventions	
Outcomes	
Notes	Unable to locate copy of the report

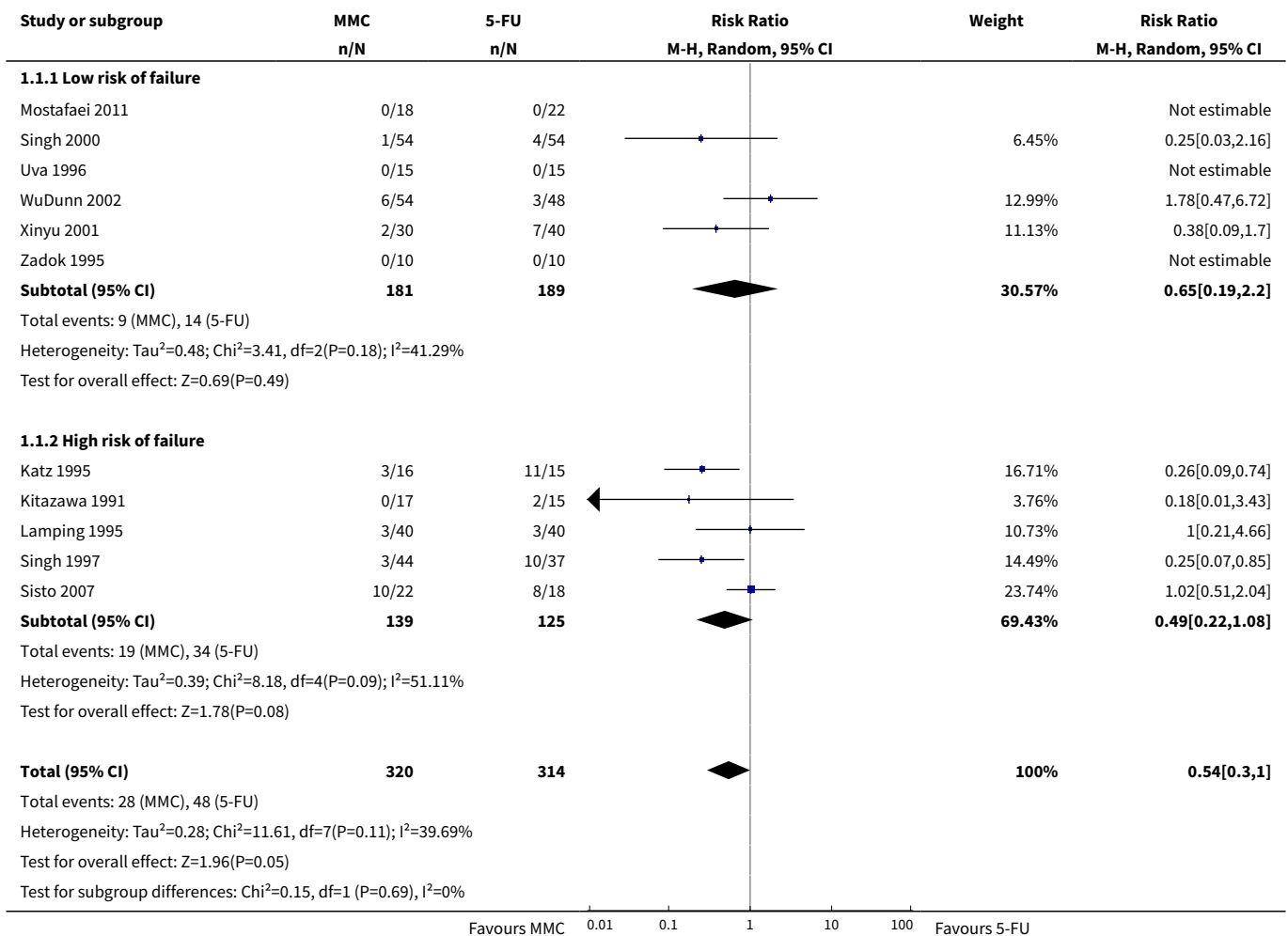
**DATA AND ANALYSES**
**Comparison 1. MMC versus 5-FU**

Outcome or subgroup title	No. of studies	No. of participants	Statistical method	Effect size
<b>1 Failure of functioning trabeculectomy at one year</b>	11	634	Risk Ratio (M-H, Random, 95% CI)	0.54 [0.30, 1.00]
1.1 Low risk of failure	6	370	Risk Ratio (M-H, Random, 95% CI)	0.65 [0.19, 2.20]
1.2 High risk of failure	5	264	Risk Ratio (M-H, Random, 95% CI)	0.49 [0.22, 1.08]
<b>2 Failure of functioning trabeculectomy at one year in descending order of MMC exposure (dose x duration)</b>	10	594	Risk Ratio (M-H, Random, 95% CI)	0.54 [0.30, 1.00]
<b>3 Failure of functioning trabeculectomy at one year depending on 5-FU administration technique</b>	10	594	Risk Ratio (M-H, Random, 95% CI)	0.54 [0.30, 1.00]
3.1 5-FU by postoperative injections	6	273	Risk Ratio (M-H, Random, 95% CI)	0.55 [0.27, 1.15]
3.2 5-FU by intraoperative sponge application	4	321	Risk Ratio (M-H, Random, 95% CI)	0.52 [0.13, 2.08]
<b>4 Intraocular pressure at one year</b>	7	386	Mean Difference (IV, Random, 95% CI)	-3.05 [-4.60, -1.50]
4.1 Low risk of failure	3	162	Mean Difference (IV, Random, 95% CI)	-1.72 [-3.28, -0.16]
4.2 High risk of failure	4	224	Mean Difference (IV, Random, 95% CI)	-4.18 [-6.73, -1.64]

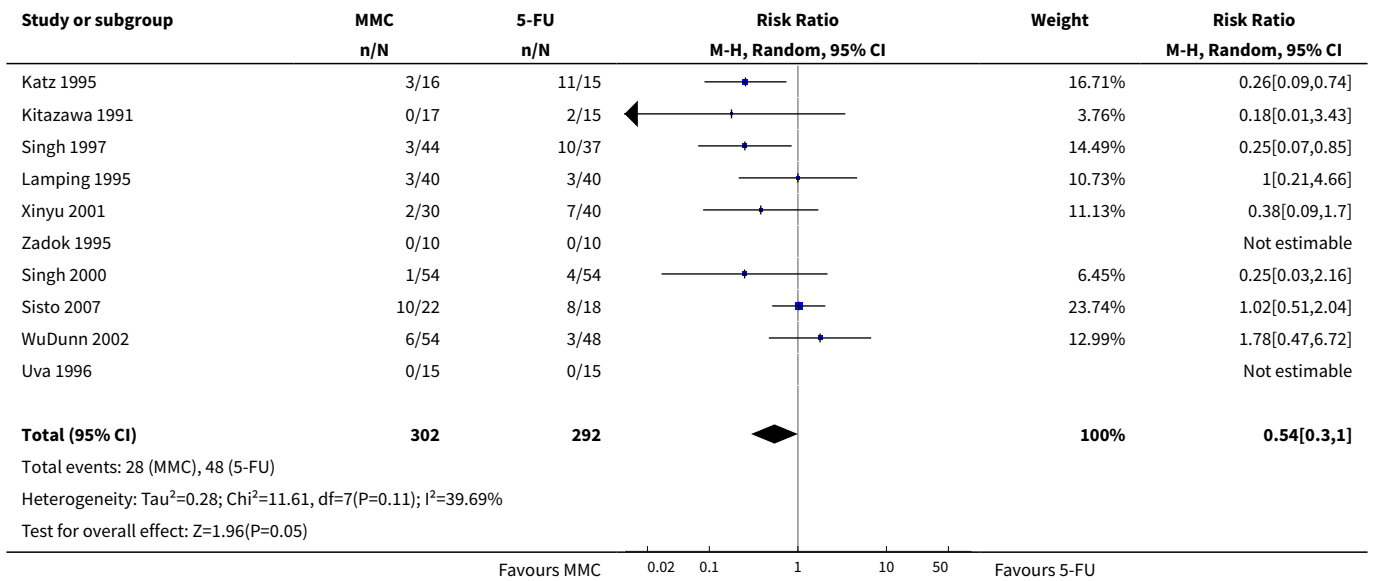
Outcome or subgroup title	No. of studies	No. of participants	Statistical method	Effect size
<b>5 Use of postoperative anti-glaucoma medications at final follow up</b>	7	426	Risk Ratio (M-H, Random, 95% CI)	1.03 [0.57, 1.85]
5.1 Low risk of failure	4	273	Risk Ratio (M-H, Random, 95% CI)	1.11 [0.60, 2.07]
5.2 High risk of failure	3	153	Risk Ratio (M-H, Random, 95% CI)	0.99 [0.26, 3.76]
<b>6 Mean number of postoperative anti-glaucoma medications</b>	4	342	Mean Difference (IV, Random, 95% CI)	-0.33 [-0.70, 0.05]
6.1 Low risk of failure	2	223	Mean Difference (IV, Random, 95% CI)	-0.08 [-0.27, 0.11]
6.2 High risk of failure	2	119	Mean Difference (IV, Random, 95% CI)	-0.71 [-1.34, -0.09]
<b>7 Loss of 2 or more lines of Snellen visual acuity postoperatively</b>	5	328	Risk Ratio (M-H, Fixed, 95% CI)	1.05 [0.54, 2.06]
7.1 Low risk of failure	2	128	Risk Ratio (M-H, Fixed, 95% CI)	2.0 [0.53, 7.59]
7.2 High risk of failure	3	200	Risk Ratio (M-H, Fixed, 95% CI)	0.81 [0.36, 1.80]
<b>8 Postoperative Complications</b>	11		Risk Ratio (M-H, Random, 95% CI)	Subtotals only
8.1 Bleb leak	2	154	Risk Ratio (M-H, Random, 95% CI)	1.22 [0.32, 4.68]
8.2 Wound leak	6	391	Risk Ratio (M-H, Random, 95% CI)	1.17 [0.51, 2.71]
8.3 Late hypotony	4	211	Risk Ratio (M-H, Random, 95% CI)	1.37 [0.41, 4.63]
8.4 Maculopathy	4	342	Risk Ratio (M-H, Random, 95% CI)	1.71 [0.35, 8.33]
8.5 Cataract	4	275	Risk Ratio (M-H, Random, 95% CI)	1.73 [0.65, 4.61]
8.6 Shallow anterior chamber	5	311	Risk Ratio (M-H, Random, 95% CI)	1.22 [0.67, 2.21]
8.7 Choroidal detachment	8	494	Risk Ratio (M-H, Random, 95% CI)	0.86 [0.45, 1.63]
8.8 Epitheliopathy	8	419	Risk Ratio (M-H, Random, 95% CI)	0.23 [0.11, 0.47]

Outcome or subgroup title	No. of studies	No. of participants	Statistical method	Effect size
8.9 Tenon cyst	3	177	Risk Ratio (M-H, Random, 95% CI)	0.94 [0.20, 4.38]
8.10 Hyphaema	4	250	Risk Ratio (M-H, Random, 95% CI)	0.62 [0.42, 0.91]
8.11 Suprachoroidal haemorrhage	3	303	Risk Ratio (M-H, Random, 95% CI)	0.73 [0.09, 5.66]
8.12 Endophthalmitis	4	315	Risk Ratio (M-H, Random, 95% CI)	3.89 [0.44, 34.57]

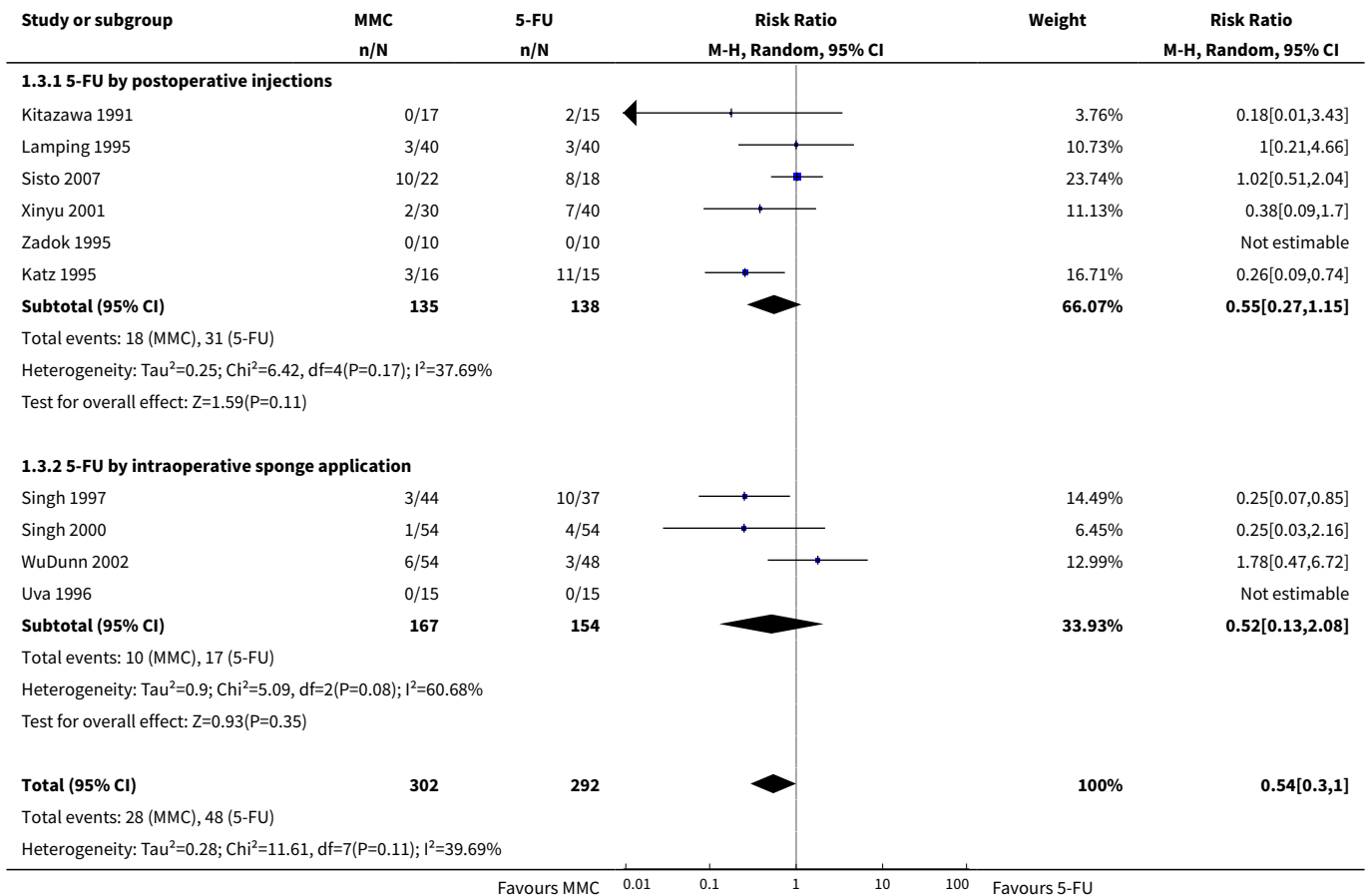
**Analysis 1.1. Comparison 1 MMC versus 5-FU, Outcome 1 Failure of functioning trabeculectomy at one year.**



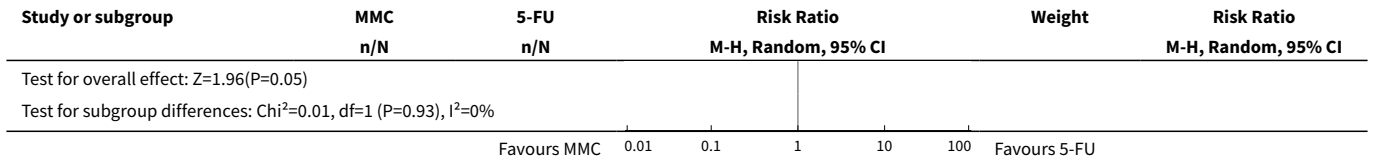
**Analysis 1.2. Comparison 1 MMC versus 5-FU, Outcome 2 Failure of functioning trabeculectomy at one year in descending order of MMC exposure (dose x duration).**



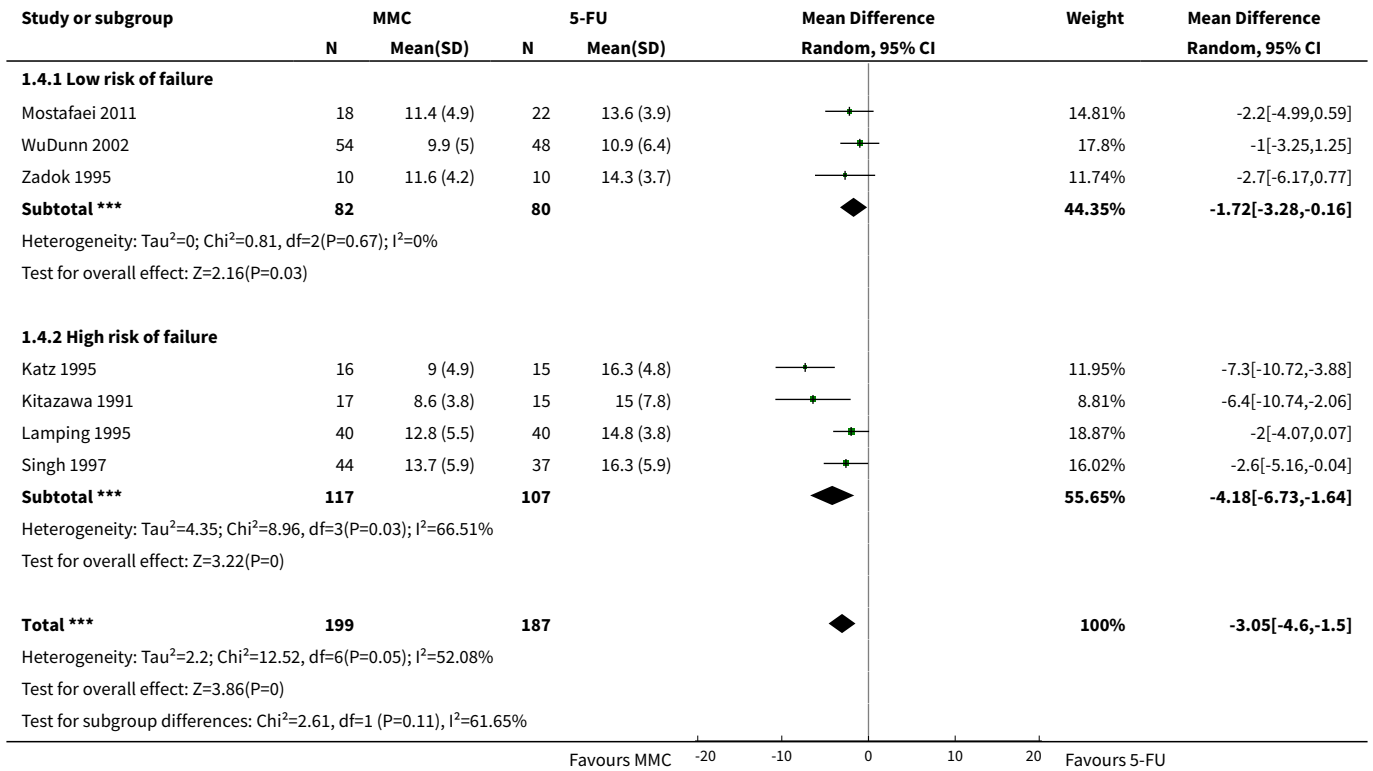
**Analysis 1.3. Comparison 1 MMC versus 5-FU, Outcome 3 Failure of functioning trabeculectomy at one year depending on 5-FU administration technique.**



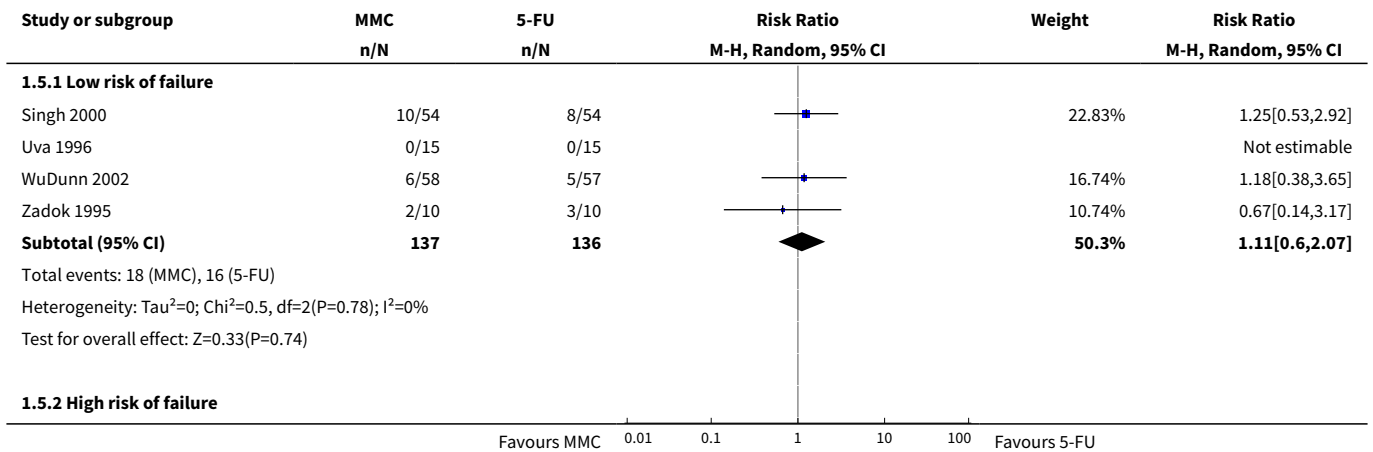


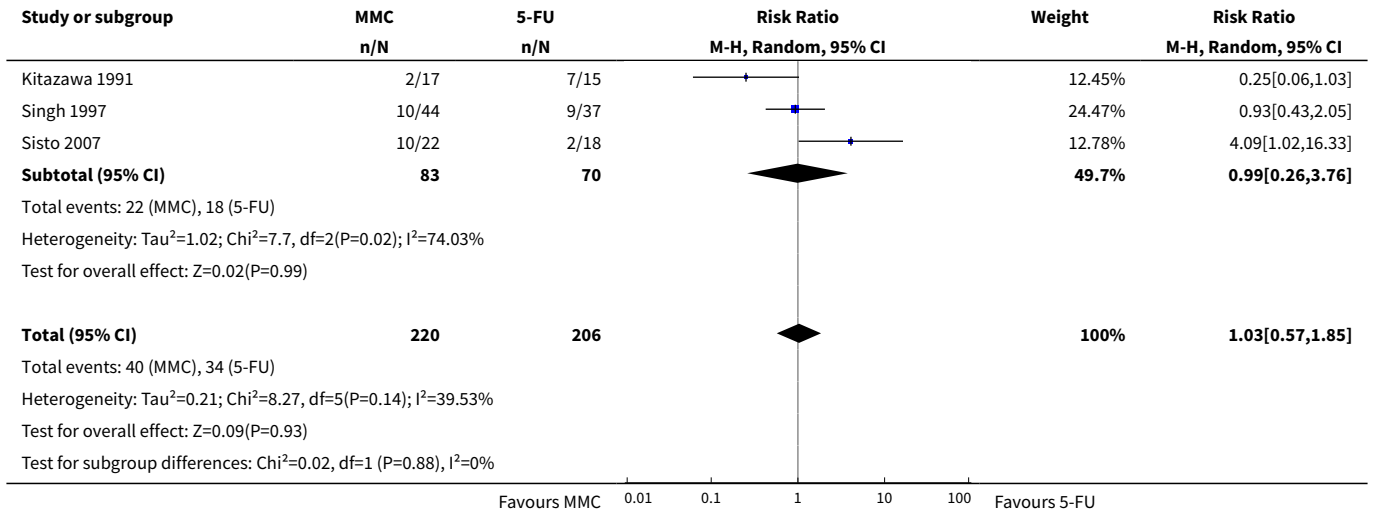


**Analysis 1.4. Comparison 1 MMC versus 5-FU, Outcome 4 Intraocular pressure at one year.**

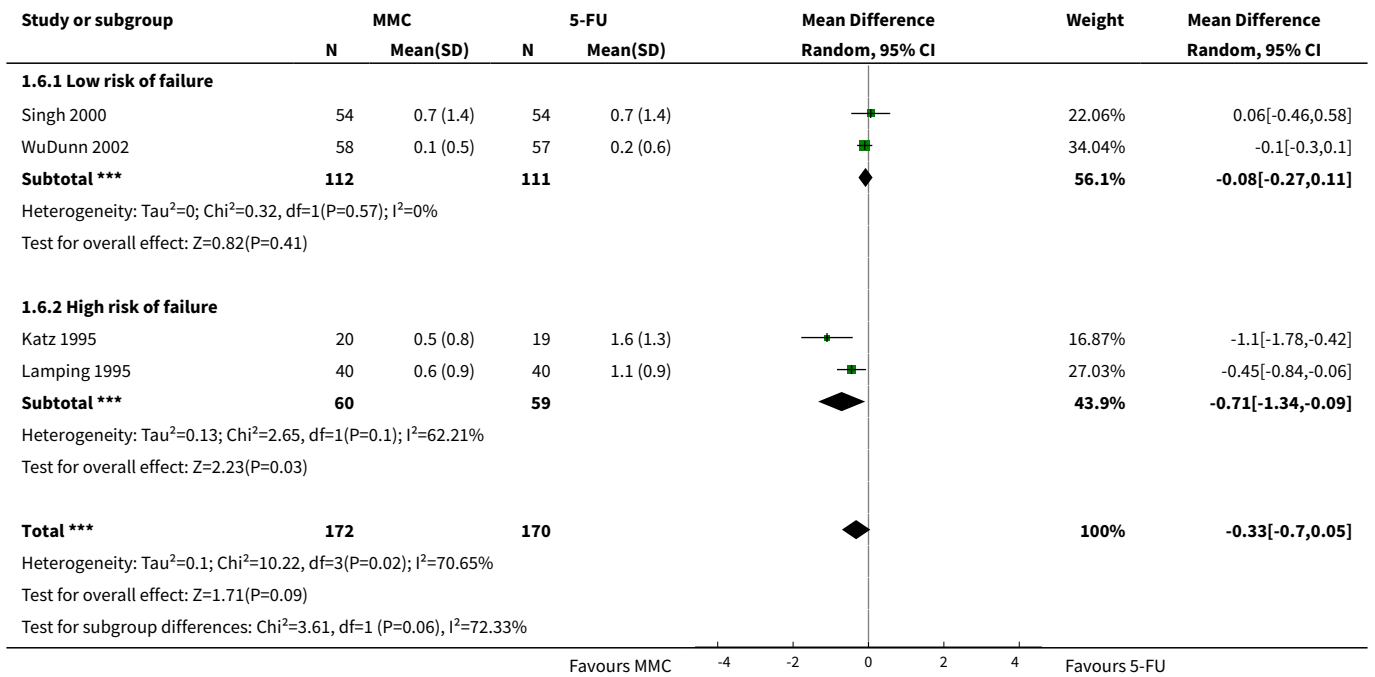


**Analysis 1.5. Comparison 1 MMC versus 5-FU, Outcome 5 Use of postoperative anti-glaucoma medications at final follow up.**

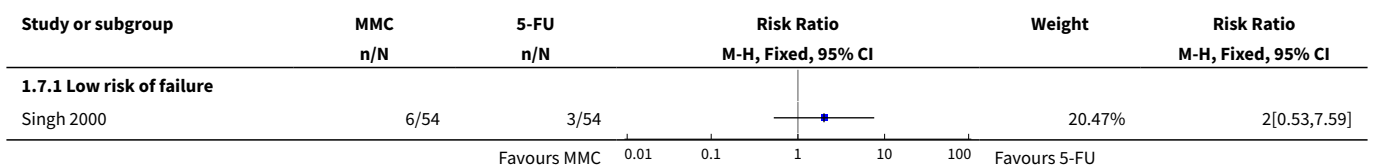


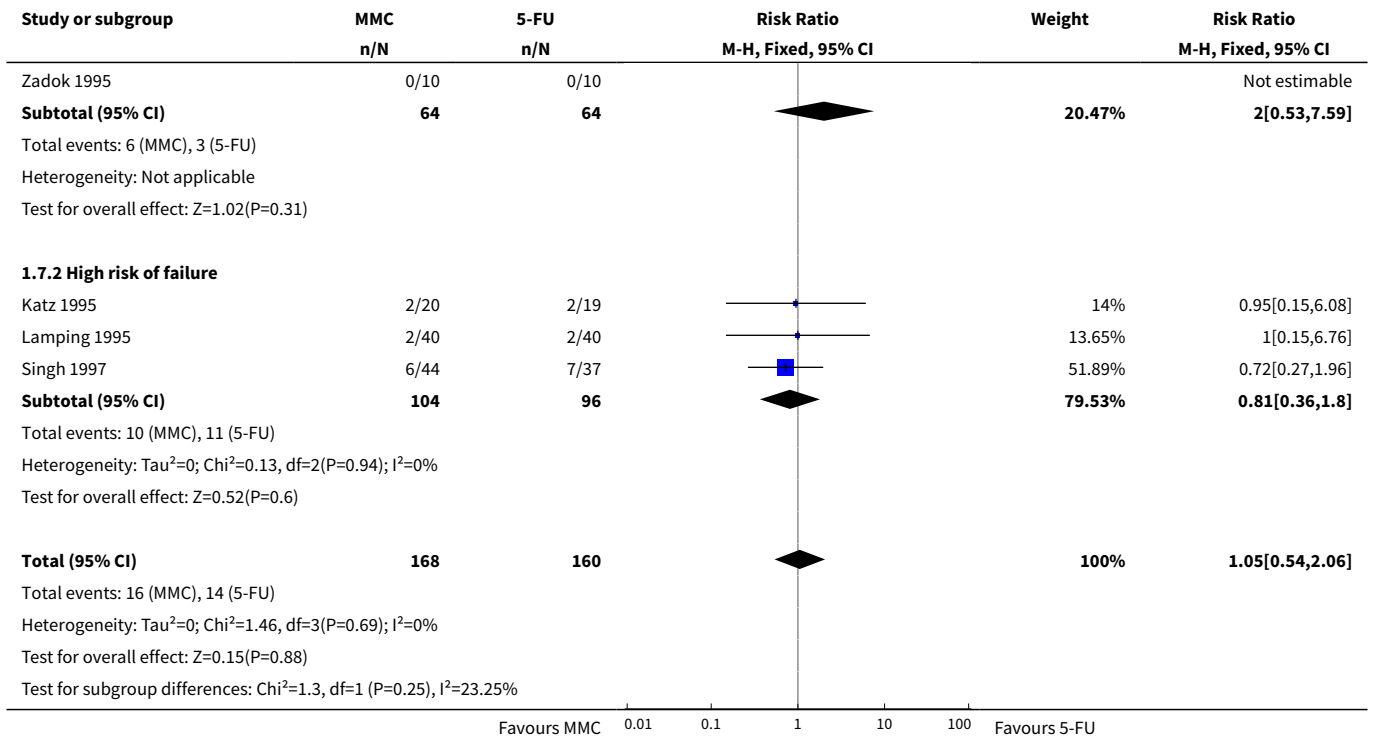


**Analysis 1.6. Comparison 1 MMC versus 5-FU, Outcome 6 Mean number of postoperative anti-glaucoma medications.**

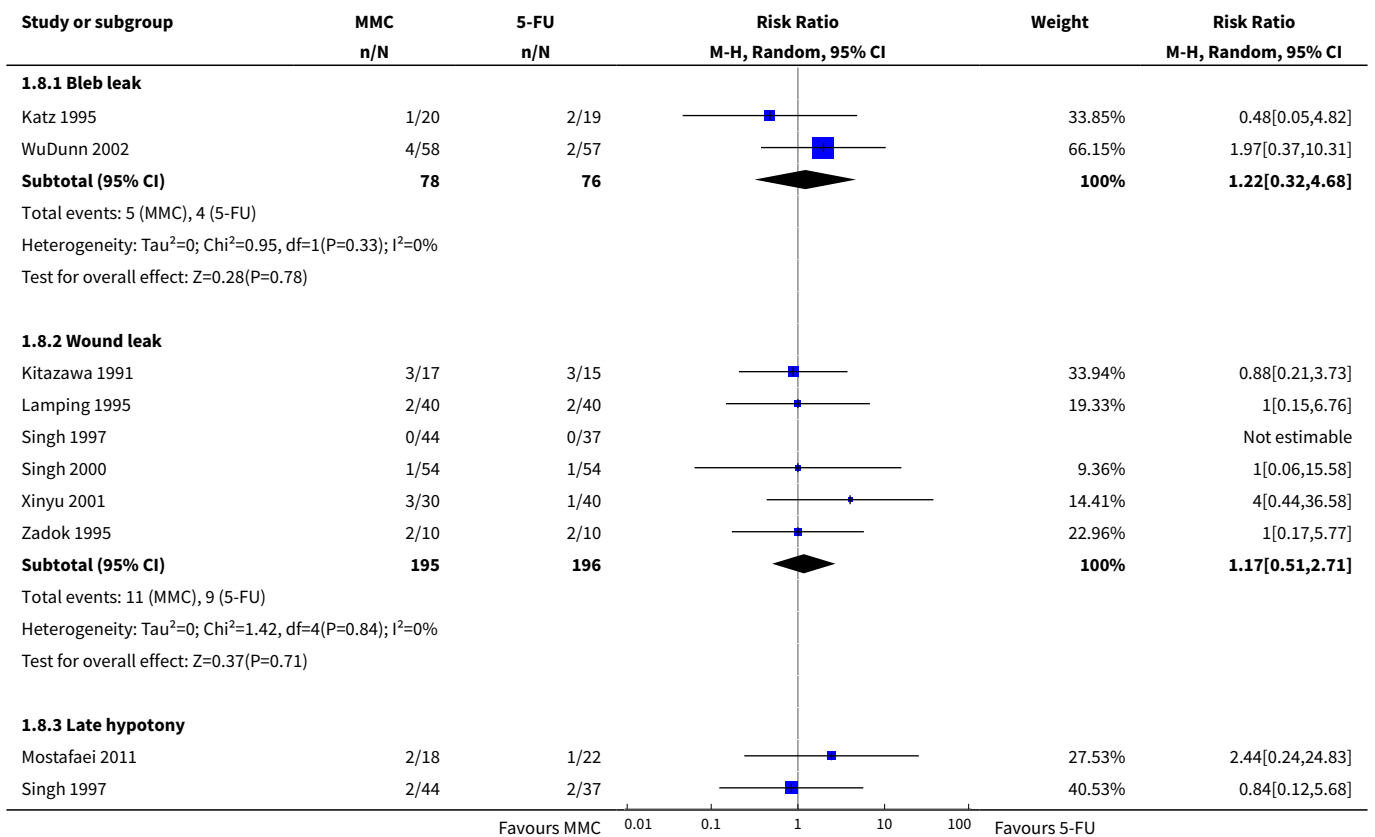


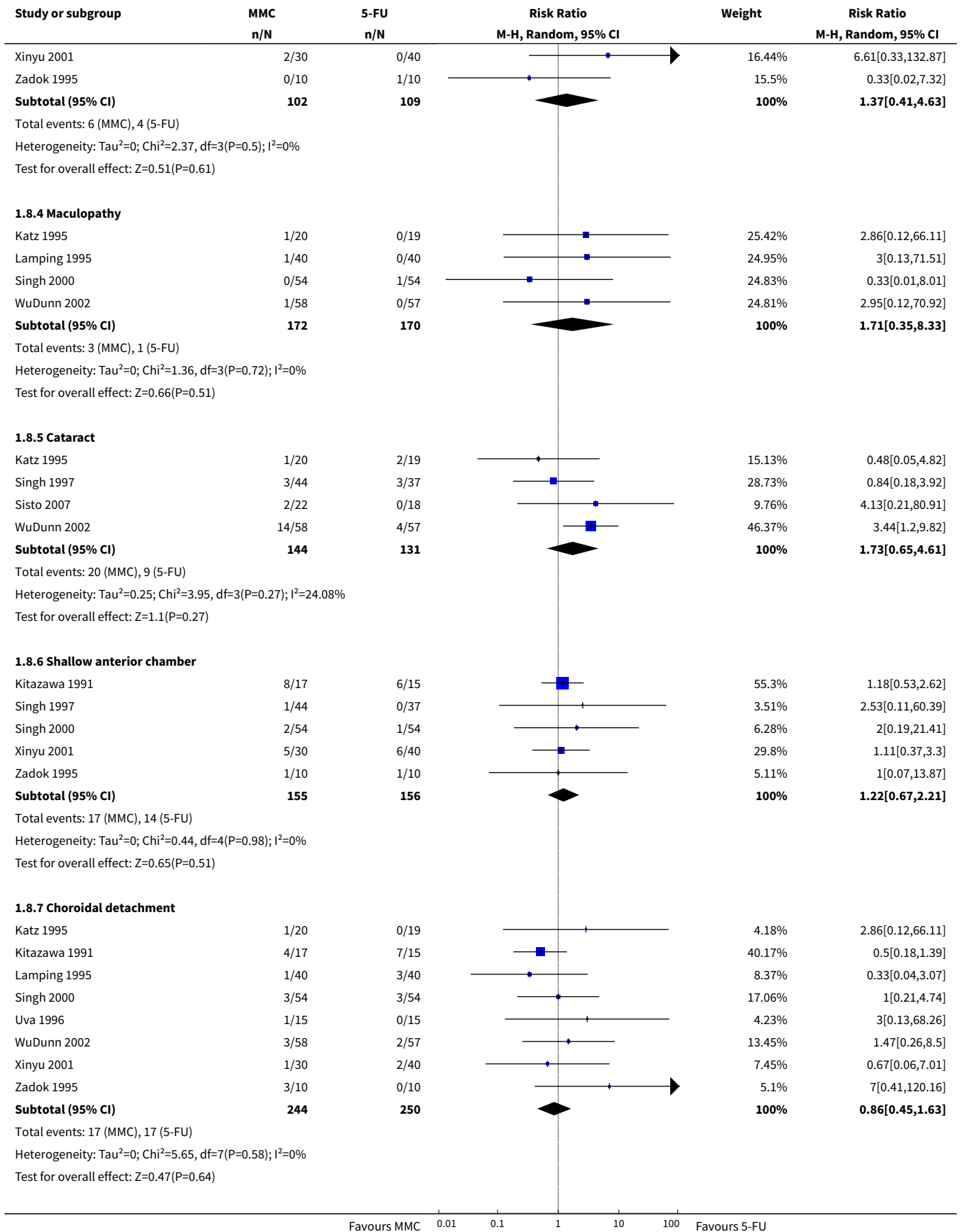
**Analysis 1.7. Comparison 1 MMC versus 5-FU, Outcome 7 Loss of 2 or more lines of Snellen visual acuity postoperatively.**

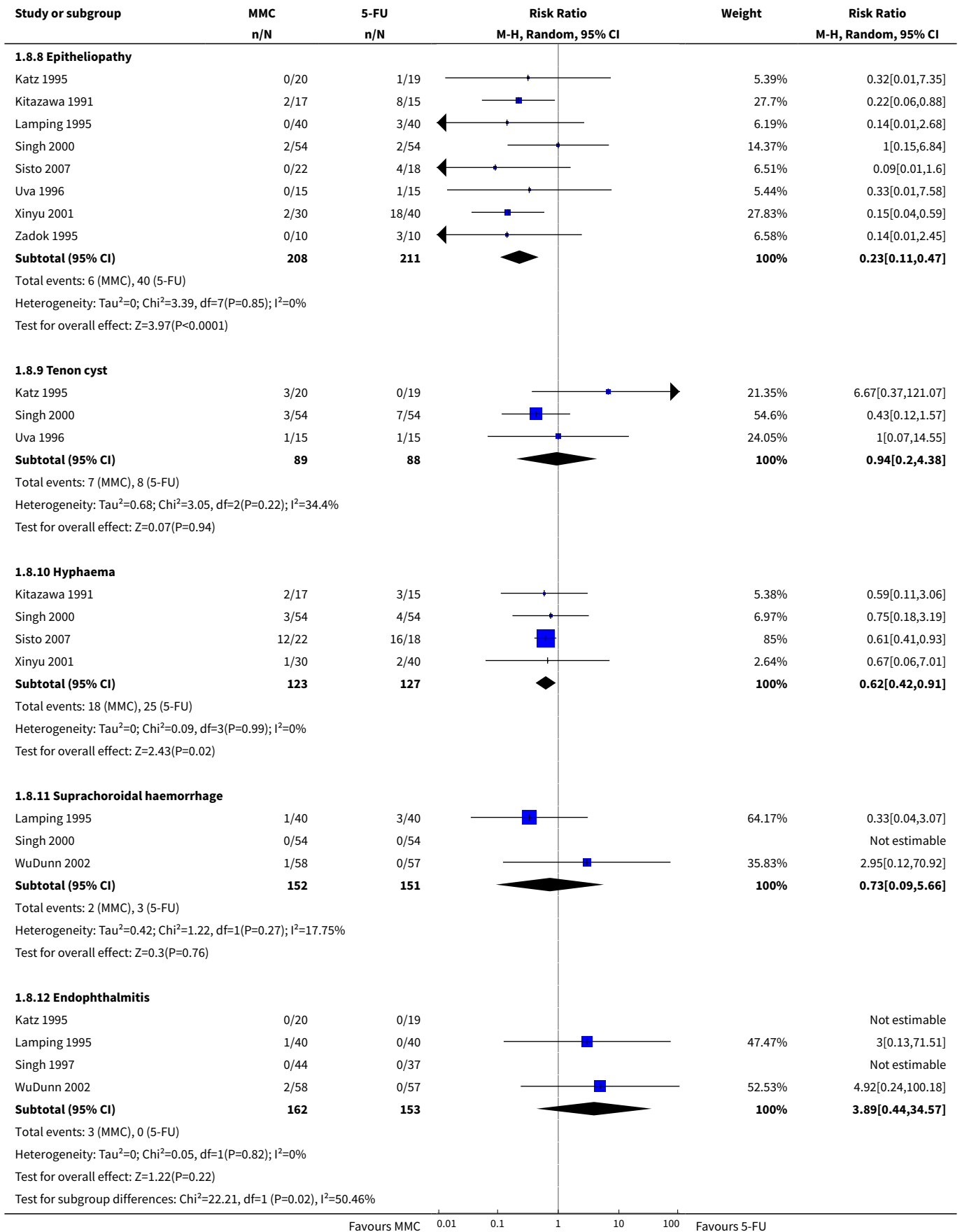




**Analysis 1.8. Comparison 1 MMC versus 5-FU, Outcome 8 Postoperative Complications.**









**ADDITIONAL TABLES**
**Table 1. Interventions**

Study	MMC*			5-FU				
	Dose	Duration (minutes)	Location	Intraoperative or postoperative	Dose	Number of injections	Duration	Location
<a href="#">Katz 1995</a>	0.5 mg/ml	5	Between the conjunctiva and the episclera	Postoperative	5 mg	10 (daily for 1 week, 3 times following week)	NA (injection)	Subconjunctival injection
<a href="#">Kitazawa 1991</a>	0.4 mg/ml	5	Between the conjunctival and scleral flap	Postoperative	5 mg	10 (each day for 1 week and every other day for the following week)	NA (injection)	Subconjunctival injections, 90 to 180 degrees away from the surgical site
<a href="#">Lamping 1995</a>	0.4 mg/ml	2.5	Between the conjunctival and scleral flap	Postoperative	5 mg	10 (first 10 days)	NA (injection)	Subconjunctival injection, 180 degrees from operating site
<a href="#">Mostafaei 2011</a>	0.02 mg	not stated	Subconjunctival injection, 180 degrees away from operating site	Intraoperative	5 mg	NA	Not stated	Subconjunctival injection
<a href="#">Singh 1997</a>	0.5 mg/ml	3.5	Between scleral flap and conjunctiva	Intraoperative	50 mg/ml	NA	5	Between scleral flap and conjunctiva
<a href="#">Singh 2000</a>	0.4 mg/ml	2	Not stated	Intraoperative	50 mg/ml	NA	5	Not stated
<a href="#">Sisto 2007</a>	0.2 mg/ml	2	Between the sclera and the Tenon's capsule	Postoperative	0.1 ml of 50 mg/ml	10 (starting on day 7, 2 injections per week for 2 weeks and then 1 injection per week for 6 weeks)	NA (injection)	Subconjunctival injections near the bleb
<a href="#">Uva 1996</a>	0.2 mg/ml	2	Between the sclera and the Tenon's capsule	Intraoperative	50 mg/ml	NA	5	Between the sclera and the Tenon's capsule
<a href="#">WuDunn 2002</a>	0.2 mg/ml	2	Not stated	Intraoperative	50 mg/ml	NA	5	Not stated

**Table 1. Interventions** (Continued)

Xinyu 2001	0.2 mg/ml	5	Not stated	Postoperative	5 mg	6 to 8 (alternate days, starting on day 3)	NA (injection)	Subconjunctival, 180 degrees away from the site of scleral flap
Zadok 1995	0.2 mg/ml	5	Between the conjunctiva and episclera	Postoperative	5 mg (0.5 ml of 10 mg/ml solution)	7 (once daily up to 7 times in the first week after surgery)	NA (injection)	Subconjunctival, 180 degrees from site of surgery

NA: not applicable

\* All MMC only one intraoperative application



## APPENDICES

### Appendix 1. CENTRAL search strategy

#1 MeSH descriptor: [Glaucoma] explode all trees  
 #2 MeSH descriptor: [Filtering Surgery] explode all trees  
 #3 MeSH descriptor: [Trabeculectomy] explode all trees  
 #4 MeSH descriptor: [Sclerostomy] explode all trees  
 #5 ((surg\* near glaucoma) or filter\* or filtrat\*)  
 #6 surg\* near intra ocular pressure  
 #7 trabeculectom\*  
 #8 sclerostom\*  
 #9 #1 or #2 or #3 or #4 or #5 or #6 or #7 or #8  
 #10 MeSH descriptor: [Mitomycin] explode all trees  
 #11 mitomycin\*  
 #12 mytomycin\*  
 #13 mitomicin\*  
 #14 mytomicin\*  
 #15 #10 or #11 or #12 or #13 or #14  
 #16 MeSH descriptor: [Fluorouracil] explode all trees  
 #17 fluorouracil  
 #18 flourouracil  
 #19 fluoro uracil  
 #20 5FU\*  
 #21 5 FU\*  
 #22 #16 or #17 or #18 or #19 or #20 or #21  
 #23 #9 and #15 and #22

### Appendix 2. MEDLINE (Ovid) search strategy

1. randomized controlled trial.pt.
2. (randomized or randomised).ab,ti.
3. placebo.ab,ti.
4. dt.fs.
5. randomly.ab,ti.
6. trial.ab,ti.
7. groups.ab,ti.
8. or/1-7
9. exp animals/
10. exp humans/
11. 9 not (9 and 10)
12. 8 not 11
13. exp glaucoma/
14. exp intraocular pressure/
15. exp filtering surgery/
16. trabeculectom\$.tw.
17. sclerostom\$.tw.
18. ((surg\$ or filter\$ or filtrat\$) adj5 glaucoma\$).tw.
19. (surg\$ adj5 intra?ocular pressure\$).tw.
20. or/13-19
21. exp mitomycin/
22. mitomycin\$.tw.
23. mytomycin\$.tw.
24. mitomicin\$.tw.
25. mytomicin\$.tw.
26. or/21-25
27. exp fluorouracil/
28. fluorouracil\$.tw.
29. flourouracil\$.tw.
30. fluoro uracil\$.tw.
31. 5FU\$.tw.
32. 5 FU\$.tw.

33. or/27-32
34. 20 and 26 and 33
35. 12 and 34

The search filter for trials at the beginning of the MEDLINE strategy is from the published paper by Glanville ([Glanville 2006](#)).

### Appendix 3. EMBASE (Ovid) search strategy

1. exp randomized controlled trial/
2. exp randomization/
3. exp double blind procedure/
4. exp single blind procedure/
5. random\$.tw.
6. or/1-5
7. (animal or animal experiment).sh.
8. human.sh.
9. 7 and 8
10. 7 not 9
11. 6 not 10
12. exp clinical trial/
13. (clin\$ adj3 trial\$).tw.
14. ((singl\$ or doubl\$ or trebl\$ or tripl\$) adj3 (blind\$ or mask\$)).tw.
15. exp placebo/
16. placebo\$.tw.
17. random\$.tw.
18. exp experimental design/
19. exp crossover procedure/
20. exp control group/
21. exp latin square design/
22. or/12-21
23. 22 not 10
24. 23 not 11
25. exp comparative study/
26. exp evaluation/
27. exp prospective study/
28. (control\$ or prospectiv\$ or volunteer\$).tw.
29. or/25-28
30. 29 not 10
31. 30 not (11 or 23)
32. 11 or 24 or 31
33. exp glaucoma/
34. exp filtering surgery/
35. exp trabeculectomy/
36. exp sclerostomy/
37. ((surg\$ or filter\$ or filtrat\$) adj5 glaucoma\$).tw.
38. (surg\$ adj2 intra?ocular pressure\$).tw.
39. trabeculectom\$.tw.
40. sclerostom\$.tw.
41. or/33-40
42. exp mitomycin/
43. mitomycin\$.tw.
44. mytomycin\$.tw.
45. mitomicin\$.tw.
46. mytomycin\$.tw.
47. or/42-46
48. exp fluorouracil/
49. fluorouracil.tw.
50. flourouracil.tw.
51. fluoro uracil.tw.
52. 5FU\$.tw.
53. 5 FU\$.tw.
54. or/48-53

55. 41 and 47 and 54

56. 32 and 55

#### Appendix 4. LILACS search strategy

glaucom\$ OR intraocular pressure OR trabeculectom\$ and mitomycin or mytomycin or mitomicin or mytomycin and fluorouracil or flourouracil or fluoro uracil or 5FU

#### Appendix 5. ISRCTN search strategy

"( Condition: glaucoma AND Interventions: mitomycin OR mytomycin OR mitomicin OR mytomycin )"

#### Appendix 6. ClinicalTrials. gov search strategy

Glaucoma AND (mitomycin OR mytomycin OR mitomicin OR mytomycin) AND (fluorouracil OR flourouracil OR fluoro uracil OR 5FU OR 5 FU)

#### Appendix 7. ICTRP search strategy

Condition = Glaucoma AND Intervention mitomycin AND fluorouracil

## HISTORY

Protocol first published: Issue 4, 2006

Review first published: Issue 11, 2015

Date	Event	Description
10 September 2008	Amended	Converted to new review format.

## CONTRIBUTIONS OF AUTHORS

Conceiving the review: JCKC, PGS

Designing the review: JCKC, PGS

Coordinating the review: JCKC, EC

Undertaking manual searches: JCKC, PGS

Screening search results: JCKC, PGS

Organising retrieval of papers: JCKC, PGS, EC

Screening retrieved papers against inclusion criteria: JCKC, PGS, EC, JE

Appraising quality of papers: JCKC, PGS, EC

Abstracting data from papers: JCKC, PGS, EC, JE

Writing to authors of papers for additional information: JCKC, PGS, EC

Obtaining and screening data on unpublished studies: JCKC, PGS

Data management for the review: JCKC, PGS, EC, JE

Entering data into RevMan: JCKC, PGS, EC

Analysis of data: JCKC, PGS, EC, JE

Interpretation of data: JCKC, PGS, EC, JE

Writing the review: JCKC, EC, JE

Securing funding for the review: JCKC, PGS

## DECLARATIONS OF INTEREST

Emily Cabourne: None known.

Jonathan CK Clarke: None known.

Patricio G Schlottmann: None known.

Jennifer R Evans: None known.

## SOURCES OF SUPPORT

### Internal sources

- National Institute for Health Research (NIHR) Biomedical Research Centre (BRC), UK.

Jonathan Clarke acknowledges financial support by the National Institute for Health Research Biomedical Research Centre based at Moorfields Eye Hospital NHS Foundation Trust and UCL Institute of Ophthalmology. The views expressed are those of the author(s) and not necessarily those of the NHS, the NIHR or the Department of Health.

### External sources

- National Institute for Health and Research (NIHR), UK.
  - Richard Wormald, Co-ordinating Editor for the Cochrane Eyes and Vision Group (CEVG) acknowledges financial support for his CEVG research sessions from the Department of Health through the award made by the National Institute for Health Research to Moorfields Eye Hospital NHS Foundation Trust and UCL Institute of Ophthalmology for a Specialist Biomedical Research Centre for Ophthalmology.
  - The NIHR also funds the CEVG Editorial Base in London.

The views expressed in this publication are those of the authors and not necessarily those of the NIHR, NHS, or the Department of Health.

## DIFFERENCES BETWEEN PROTOCOL AND REVIEW

We did not include outcomes 1.4, 1.5 and 1.6 in the protocol. Use of postoperative glaucoma medication is a surrogate for partial trabeculectomy failure and was measured as an outcome in several of the included studies. Visual acuity was another commonly reported outcome in the included studies, in particular a loss of 2 lines of Snellen visual acuity. We therefore considered it appropriate to include these two outcomes in our review given their use in the assessment of trabeculectomy outcomes.

No data were available on time to failure as no studies were found to use Kaplan-Meier survival analysis as an outcome measure. Additionally, only one study commented clearly on non-attendance rates. No data were available on quality-of-life measures. We therefore did not report outcomes for time to failure, quality of life and non-attendance rate.

Late hypotony, endophthalmitis and choroidal detachment are of clinical interest and significance when concerning trabeculectomy. We therefore chose these adverse outcomes as priority in the [Summary of findings for the main comparison](#).

## INDEX TERMS

### Medical Subject Headings (MeSH)

\*Trabeculectomy; Antimetabolites [\*therapeutic use]; Chemotherapy, Adjuvant; Cicatrix [prevention & control]; Fluorouracil [\*therapeutic use]; Glaucoma [drug therapy] [\*surgery]; Intraocular Pressure [drug effects]; Mitomycin [\*therapeutic use]; Randomized Controlled Trials as Topic; Risk; Treatment Failure; Wound Healing [\*drug effects]

### MeSH check words

Humans