

Correction

Correction: Musashi2 promotes the development and progression of pancreatic cancer by down-regulating Numb protein

Weiwei Sheng¹, Ming Dong¹, Chuanping Chen², Yang Li³, Qingfeng Liu⁴ and Qi Dong⁴

¹Department of General Surgery, Gastrointestinal Surgery, The First Hospital, China Medical University, Shenyang, 110001, China

²Department of Clinical Laboratory, The Sixth Peoples' Hospital of Shenyang City, 110003, China

³Department of Cell Biology, China Medical University, Shenyang, 110001, China

⁴Department of General Surgery, The Peoples' Hospital of Liaoning Province, Shenyang, 110015, China

Published: January 20, 2022

Copyright: © 2022 Sheng et al. This is an open access article distributed under the terms of the [Creative Commons Attribution License](https://creativecommons.org/licenses/by/3.0/) (CC BY 3.0), which permits unrestricted use, distribution, and reproduction in any medium, provided the original author and source are credited.

This article has been corrected: In Figure 9, panels 'B' and 'C' contain an accidental overlap. The corrected Figure 9, produced using the original data, is shown below. The authors declare that these corrections do not change the results or conclusions of this paper.

Original article: Oncotarget. 2017; 8:14359–14373. <https://doi.org/10.18632/oncotarget.8736>

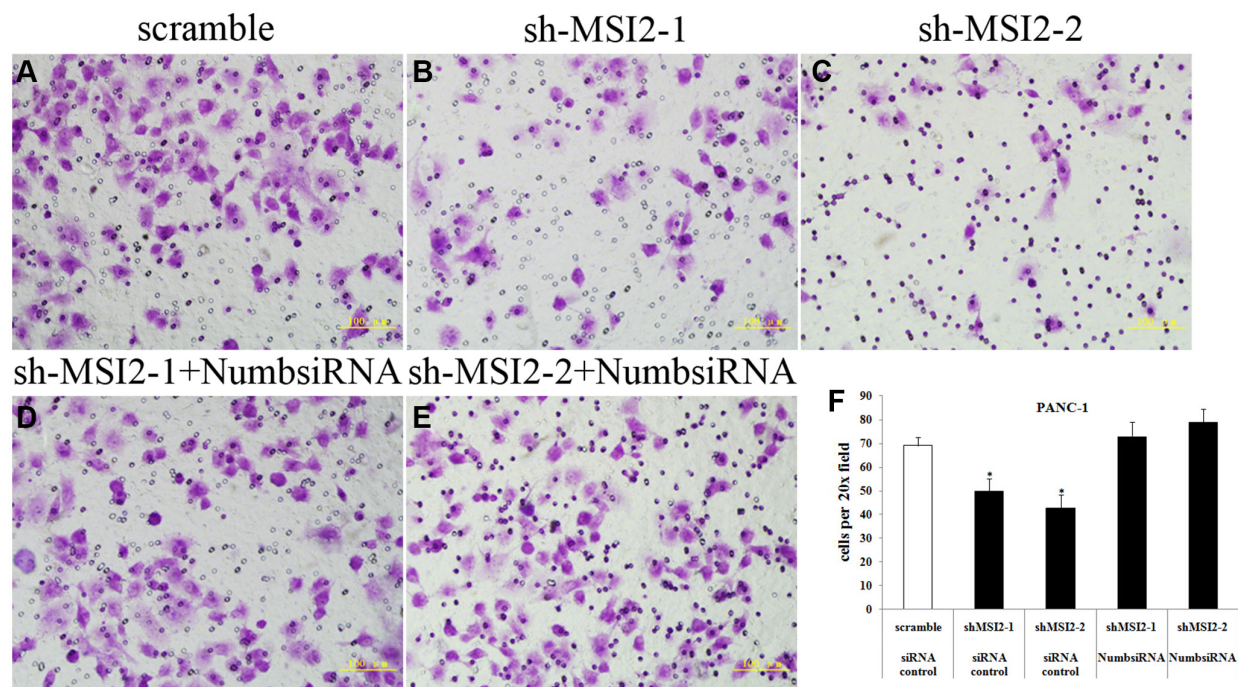


Figure 9: Coordinate regulation of MSI2 and Numb in cell invasion of PANC-1 cells. (A–F) Cell invasion in shMSI2-1 (B) and shMSI2-2 (C) transfected PANC-1 was significantly decreased, compared with that in corresponding scramble group (A). However, Numb knockdown can significantly reverse the decrease of cell invasion in shMSI2-1 (D) and shMSI2-2 (E) transfected PANC-1 cells. Bars indicate \pm S.E. * $P < 0.05$ compared with the control.