



Real-world safety and efficacy data of immunotherapy in patients with cancer and autoimmune disease: the experience of the Hellenic Cooperative Oncology Group

Elena Fountzilas^{1,2} · Sofia Lampaki³ · Georgia-Angeliki Koliou⁴ · Anna Koumariou⁵ · Sofia Levva^{6,7} · Anastasios Vagionas⁸ · Athina Christopoulou⁹ · Athanasios Laloyis¹⁰ · Amanda Psyrris¹¹ · Ioannis Binas¹² · Giannis Mountzios¹³ · Nikolaos Kentepozidis¹⁴ · Athanassios Kotsakis¹⁵ · Emmanouil Saloustris¹⁵ · Anastasios Boutis¹⁶ · Adamantia Nikolaidi¹⁷ · George Fountzilas^{18,19,20} · Vassilis Georgoulas²¹ · Miltiadis Chrysanthidis²² · Elias Kotteas²³ · Henry Vo²⁴ · Marinou Tsiatas²⁵ · Eleni Res²⁶ · Helena Linardou²⁷ · Dimitrios Daoussis²⁸ · Iliada Bompolaki²⁹ · Anna Andreadou³⁰ · George Papaxoinis³¹ · Dionisios Spyrtatos³ · Helen Gogas³² · Konstantinos N. Syrigos²³ · Dimitrios Bafaloukos²²

Received: 2 April 2021 / Accepted: 8 June 2021 / Published online: 23 June 2021
© The Author(s) 2021

Abstract

Background Data on the safety and efficacy of immune checkpoint inhibitors (ICI) in patients with concurrent autoimmune diseases (AID) are limited.

Methods We performed a retrospective multicenter review of medical records of patients with cancer and underlying AID who received ICI. The primary endpoint was progression-free survival (PFS).

Results Among 123 patients with pre-existing AID who received ICI, the majority had been diagnosed with non-small cell lung cancer (NSCLC, 68.3%) and melanoma (14.6%). Most patients had a rheumatologic (43.9%), or an endocrine disorder (21.1%). Overall, 74 (60.2%) patients experienced an immune-related adverse event (irAE) after ICI initiation, AID flare (25.2%), or new irAE (35%). Frequent irAEs included thyroiditis, dermatitis and colitis. ICI was permanently discontinued due to unacceptable (8.1%) or fatal (0.8%) toxicity. In patients with NSCLC, corticosteroid treatment at the initiation of immunotherapy was associated with poor PFS (HR = 2.78, 95% CI 1.40–5.50, $p = 0.003$). The occurrence of irAE was associated with increased PFS (HR = 0.48, 95% CI 0.25–0.92, $p = 0.026$). Both parameters maintained their independent prognostic significance.

Conclusions ICI in patients with cancer and pre-existing AID is associated with manageable toxicity that infrequently requires treatment discontinuation. However, since severe AID flare might occur, expected ICI efficacy and toxicity must be balanced.

Clinical trial identifier NCT04805099

Keywords Autoimmune disease · Corticosteroid · Immunomodulatory drugs · Immune-related adverse events · Efficacy · Non-small cell lung cancer

Precis The administration of immunotherapy to patients with cancer and pre-existing autoimmune diseases (AID) was associated with manageable toxicity. Since severe exacerbation of the AID may occur, expected treatment efficacy and toxicity must be balanced.

✉ Elena Fountzilas
elenafou@gmail.com

Extended author information available on the last page of the article

Introduction

Immunotherapy has led to unprecedented improvement in clinical outcomes compared to standard treatments in selected patients with diverse tumor types [1–3]. Combinations of agents targeting the immune checkpoint receptors cytotoxic T-lymphocyte antigen-4 (CTLA-4), programmed cell death 1 (PD-1), and programmed death-ligand 1 (PD-L1) with chemotherapy, targeted or other immunotherapeutic agents have been approved or are being evaluated in different clinical settings. However, since these receptors play

a fundamental role in regulating the immune system, the administration of immunotherapy has been associated with immune-related adverse events (irAE) [4].

Due to this unique toxicity profile, prospective randomized trials evaluating immune checkpoint inhibitors have largely excluded patients with pre-existing autoimmune diseases (AID). Exclusion of these patients was based primarily on concerns about potential increased autoimmune toxicity, requirement for treatment discontinuation and thus compromised efficacy. In addition, patients with AID have amplified immune response, and therefore, treatment with immunotherapy could increase the risk for additional organ inflammation and exacerbated immune-related toxicity. Moreover, patients with AID are often treated with immunomodulatory drugs that have been associated with decreased treatment efficacy and poorer survival [5, 6].

However, in clinical practice, despite lack of robust evidence, patients with well-controlled AID are treated with immune checkpoint inhibitors, especially in cases where clinical benefit is highly expected. Previously published studies have addressed toxicity rates in patients with cancer and underlying AID [7, 8]. Subgroup analysis in 2 prospective clinical trials (SAUL and CheckMate-172) evaluating the safety of atezolizumab and nivolumab, respectively, in patients with AID, demonstrated that the presence of AID did not preclude treatment with immune checkpoint inhibitors [9, 10]. The remaining available data are retrospective, with most of the studies evaluating small numbers of patients [7, 8, 11–18]. Therefore, more robust data on toxicity and efficacy of treatment with immune checkpoint inhibitors in patients with pre-existing AID are needed to ensure their safe use in daily practice.

Real-world data are being increasingly used to evaluate the true effectiveness and safety of innovative therapies. This is especially useful in assessing clinical outcomes and toxicity profiles of drugs in patient populations that are often excluded from randomized clinical trials, such as older patients, patients with comorbidities, poor performance status or patients with AID in case of immunotherapy trials. Two agents (palbociclib for male breast cancer and pembrolizumab for tumors with microsatellite instability) received Food and Drug Administration (FDA)-approvals, partially based on real-world data [19, 20]. Therefore, real-world evidence retrieved from electronic health records, insurance claims, billing databases, registries and patient-generated sources, hold the promise for providing clinically useful information with reduced time, cost, and man-effort.

Our aim was to perform a national, multicenter, retrospective cohort study to evaluate real-world data on safety and efficacy of immunotherapeutic agents in patients with pre-existing AID. We, therefore, performed a retrospective review of medical records of patients with diverse tumor types and underlying AID who received immune checkpoint

inhibitors at Departments of Oncology that are affiliated with the Hellenic Cooperative Oncology Group (HeCOG).

Patients and methods

Patients

This was a retrospective analysis of patients with diverse tumor types (early stage or metastatic). Patients had received European Medicines Agency (EMA)-approved immune checkpoint inhibitors at HeCOG-affiliated Departments of Oncology from January 2014 to January 2021. Eligible patients were of 18 years or older, with a history of AID, who had received treatment with immune checkpoint inhibitors as any of line of treatment. Pre-existing AIDs were defined according to standard diagnostic criteria; these included but were not limited to rheumatologic, dermatologic, endocrine, neurologic and gastrointestinal inflammatory diseases. Patients were excluded if the AID was diagnosed after initiation of immunotherapy.

Patient clinical data, including demographics, type of AID, treatment data, IRAEs, and outcome data, were obtained from their medical records. Current use of immunosuppressive drugs for the treatment of the underlying AID was also recorded. Immunosuppressive agents were categorized into corticosteroids and other immunomodulatory drugs (cytostatics, antibodies, drugs acting on immunophili-ns and other) [21]. AID was categorized active and inactive, based on the presence of symptoms or concurrent use of an immunomodulatory drug at the initiation of immune checkpoint inhibitors. Toxicity data [worsening of the AID (flare) and irAE] were retrospectively recorded from the clinicians' documentations of patient-reported symptoms and laboratory results during scheduled clinical visits or patient hospitalizations. The study was approved by the Institutional Review Board of "G. Papanikolaou" General Hospital (protocol number: 339_4/3/2021).

Statistical analysis

Descriptive statistics (counts with percentages for categorical and median values with the corresponding ranges for continuous variables) were used to summarize patient characteristics and other variables of interest. The chi-square and the Fisher's exact test (where more appropriate) were applied to evaluate associations of categorical variables. The primary endpoint of interest was the assessment of progression-free survival (PFS), defined as the time interval from the initiation of immunotherapy to the date of discontinuation (due to any reason), first documented progression, death from any cause or last contact, whichever occurred first. Secondary endpoints included overall survival (OS),

best response, presence of irAEs and time to irAE. OS was measured from the day of initiation of immunotherapy to the date of death or last contact. Best response during immune checkpoint inhibitor treatment was defined per physician's assessment locally at each institution. All irAEs were classified and graded according to the Common Terminology Criteria for Adverse Events (CTCAE, version 4.0). Time to irAE was defined as the time from the initiation of immunotherapy to the development of the irAE. The effect of variables of interest on patients' outcome in terms of PFS, OS and response rate was examined separately in the entire cohort of patients with available data and among those with advanced non-small cell lung cancer (NSCLC). Cox regression models were applied to estimate the association of variables of interest with progression/mortality rates. Time-dependent covariates were used to evaluate departures from the proportional hazards assumption. The Kaplan–Meier product limit method was applied to assess survival distributions, and the log-rank test was used for comparisons between patient groups. Significance was set at 5%, and all tests were two-sided. Analysis was performed using the SAS v.9.3 (SAS Institute Inc., Cary, NC, USA) statistical software.

Results

Patient characteristics

Overall, 123 patients were included in the study, of which 77 (62.6%) were men; median age was 62.1 years of age. The more common cancer diagnosis was lung cancer ($n = 84$, 68.3%), followed by melanoma ($n = 18$, 14.6%) and head and neck cancer ($n = 6$, 4.9%). Treatment with immunotherapy was initiated from January 2014 to January 2021 and was administered as monotherapy in 93 (76.2%) patients. The majority of the patients ($n = 102$, 82.9%) received PD-1 inhibitors as monotherapy. Eight patients (6.5%) were rechallenged with immune checkpoint inhibitors. Detailed patient characteristics are depicted in Table 1.

Pre-existing autoimmune disease

Among the underlying AID, the majority of patients had a rheumatologic ($n = 54$, 43.9%), or an endocrine disorder ($n = 26$, 21.1%). Patients had been diagnosed with a wide variety of AID, more commonly with psoriasis/prosiasic arthritis ($n = 29$, 23.6%), rheumatoid arthritis ($n = 25$, 20.3%), and diabetes type I ($n = 13$, 10.6%). Five (4.1%) patients had been diagnosed with two AIDs. Detailed information on pre-existing AIDs is reported in Table 2. At the initiation of immune checkpoint inhibitors, the pre-existing AID was active in 80 (65%) patients. Anti-inflammatory treatment was required in 45 (36.6%) patients at the

Table 1 Patient and tumor characteristics

	N (%)
Age ($N = 123$)	62.1 (35.2,84.5)
Gender ($N = 123$)	
Female	46 (37.4)
Male	77 (62.6)
Race ($N = 123$)	
White	123 (100.0)
Other	0 (0.0)
Serious comorbidities ($N = 122$)*	
No	115 (94.3)
Yes	7 (5.7)
Other comorbidities ($N = 122$)	
No	34 (27.9)
Yes	88 (72.1)
Active autoimmune disease at initiation of immunotherapy ($N = 123$)	
No	43 (35.0)
Yes	80 (65.0)
Stage at diagnosis ($N = 122$)	
Early	21 (17.2)
Locally advanced	33 (27.0)
Metastatic	68 (55.7)
Primary site of cancer ($N = 123$)	
NSCLC	77 (62.6)
Melanoma	18 (14.6)
SCLC	7 (5.7)
Head and neck	6 (4.9)
Urothelial	4 (3.3)
Gastrointestinal	3 (2.4)
Renal	3 (2.4)
Breast	2 (1.6)
Merkel cell	1 (0.81)
Ovarian	1 (0.81)
Sarcoma	1 (0.81)
PDL-1 expression ($N = 82$)	
Negative	16 (19.5)
Positive	66 (80.5)
Setting of immunotherapy administration ($N = 123$)	
Adjuvant	9 (7.3)
Locally advanced/metastatic	114 (92.7)
Line of treatment for metastatic setting ($N = 113$)	
1st line	51 (45.1)
2nd line	53 (46.9)
3rd line and beyond	9 (8.0)
Immunotherapy agents ($N = 123$)	
CTLA4	4 (3.3)
PD-1/PD-L1	116 (94.3)
Combination CTLA4 and PD-1	3 (2.4)
Immune checkpoint inhibitor ($N = 122$)	
Pembrolizumab	50 (40.9)
Nivolumab	51 (41.8)
Atezolizumab	8 (6.6)

Table 1 (continued)

	N (%)
Durvalumab	5 (4.1)
Ipilimumab	4 (3.3)
Ipilimumab and nivolumab	3 (2.5)
Avelumab	1 (0.8)
<i>Monotherapy (N=122)</i>	
No	29 (23.8)
Yes	93 (76.2)
<i>Combined with chemotherapy (N=122)</i>	
No	99 (81.1)
Yes	23 (18.9)

*Including long QT syndrome, uncontrolled or significant cardiac disease, (recent myocardial infarction, congestive heart failure, unstable angina and bradyarrhythmias)

CTLA-4 cytotoxic T-lymphocyte antigen 4, *N* number, *NSCLC* non-small cell lung cancer, *PD-1* programmed cell death protein 1, *PD-L1* programmed death-ligand 1, *SCLC* small cell lung cancer

initiation of immunotherapy; 12 (9.8%) patients received treatment with both corticosteroids and other immunomodulatory medications, while 33 (26.8%) patients received either immunomodulatory agents (excluding corticosteroids) ($n=19$, 15.4%) or corticosteroids only ($n=14$, 11.4%). Non-corticosteroid treatments included conventional disease-modifying anti-rheumatic drugs (DMARDs) (cyclosporin, hydroxychloroquine, leflunomide, methotrexate, sulfasalazine, azathioprine), biologic DMARDs (etanercept, ustekinumab) and a phosphodiesterase type 4 (PDE4) inhibitor.

Toxicity

Overall, 74 of 123 patients (60.2%) experienced an irAE after initiation of treatment with an immune checkpoint inhibitor; either exacerbation of the underlying AID (flare) of the pre-existing AID (31, 25.2%), or different irAEs (43, 35%). Ten patients developed both an unrelated irAE and flare of the pre-existing AID. Patients with flare had more commonly underlying dermatologic diseases (12 patients; 38.7%), with the vast majority (10 patients) having been diagnosed with psoriasis. The median time interval between initiation of immunotherapy and development of the irAE was 4.3 [range 0.3–33.4] months (Fig. 1). No association between the occurrence of an irAE and various clinicopathologic factors was identified. In 13 (10.6%) patients, ≥ 2 irAE was reported. Eight patients, all with melanoma, received at least one more treatment with a different immune checkpoint inhibitor (3 with a CTLA-4 inhibitor and 5 with a PD-1 inhibitor). Among those, 6 experienced an irAE during the second line of immunotherapy treatment. Details on irAE are reported in Supplementary Table 1.

Table 2 Type of pre-existing autoimmune disease

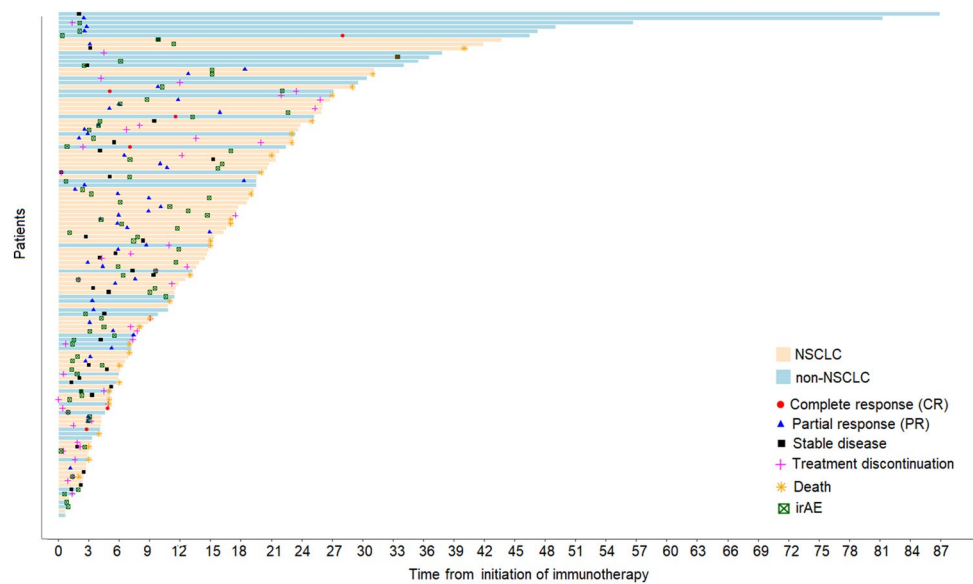
Type of pre-existing autoimmune disease	N (%)
Rheumatologic	54 (43.9)
Rheumatoid arthritis	25 (20.3)
Sarcoidosis	1 (0.8)
Scleroderma	1 (0.8)
Systemic lupus erythematosus	5 (4.1)
Sjogren	1 (0.8)
Psoriatic arthritis	6 (4.9)
Mixed connective tissue disease	1 (0.8)
Temporal arteritis	1 (0.8)
Polymyalgia rheumatica	3 (2.4)
Vasculitis	7 (5.7)
IgG4 aortitis	1 (0.8)
Arthritis/reiter	2 (1.6)
Endocrine	26 (21.1)
Hashimoto thyroiditis	12 (9.8)
Graves thyroiditis	1 (0.8)
Diabetes mellitus type I	13 (10.6)
Gastrointestinal	10 (8.1)
Crohn disease	2 (1.6)
Lymphocytic colitis	1 (0.8)
Ulcerative colitis	6 (4.9)
Primary biliary cholangitis	1 (0.8)
Dermatologic	31 (25.2)
Psoriasis	23 (18.7)
Vitiligo	7 (5.7)
Lichen planus	1 (0.8)
Neurologic	3 (2.4)
Myasthenia	2 (1.6)
Myasthenia gravis	1 (0.8)
Other	1 (0.8)
Pneumonitis	1 (0.8)

N number

Bold values indicate statistically significant parameters

The most frequent irAEs experienced by patients on immunotherapy were thyroid dysfunction, skin toxicity and colitis (with/or without endoscopic findings). The presence of irAE did not differ between patients who received anti-PD-1/PD-L1 agents alone or anti CTLA4 (57.1% vs. 60.3% Fisher's $p > 0.999$). The majority of irAEs were generally mild, while grade 3–4 irAEs were observed in 12 (9.9%) patients. Only in one patient grade 4 exacerbation of psoriasis was reported. There were 2 deaths associated with immunotherapy administration, one was attributed to pneumonitis and one to the flare of the underlying myasthenia. The latter patient was on treatment with corticosteroids and other immunomodulatory agents at the time of immunotherapy

Fig. 1 Duration of immunotherapy treatment, toxicity and clinical outcomes of patients treated with immune checkpoint inhibitors



initiation for the treatment of advanced NSCLC. He died after one treatment cycle of an anti-PD-1 agent.

Only 22 patients required systemic corticosteroids for management of irAE. The irAE resolved completely in 63 (53.4%) patients. Treatment with an immune checkpoint inhibitor was interrupted in 16 (13.9%) patients, and permanently discontinued due to unacceptable or fatal toxicity in 11 (8.9%) patients. Discontinuation rate (due to any cause) was not found to be associated with the type of agent administered (chi-square $p=0.75$).

Efficacy

At the time of analysis, with a median follow-up of 17.4 months (95% CI 13.3–20.6), 30 deaths had occurred. The median OS was 40.5 months (95% CI 27–non-estimable). Objective response to immunotherapy was achieved in 57 of 101 (56.4%) evaluable patients (7 with complete and 50 with partial response), while stable disease was observed in 35 (34.7%) and progressive disease in 9 patients (8.9%) (Fig. 1). We found no association between the use of immunomodulatory treatment (corticosteroids and/or steroid sparing agents) at the time of immune checkpoint inhibitor initiation and response to immune checkpoint inhibitor treatment ($p=0.44$). We also found no association between the development of AID flare and response to immunotherapy ($p=0.73$). We did, however, observe an association between the use of corticosteroids as treatment for the AID at the time of initiation of immune checkpoint inhibitors with shorter PFS (HR = 2.08, 95% CI 1.18–3.68, Wald's $p=0.012$) (Fig. 2A). There was no association of immunomodulatory agent use (excluding corticosteroids) at immunotherapy initiation and PFS ($p=0.22$).

Analysis was performed separately in patients with advanced NSCLC, who represented the largest proportion of our patient population. The median OS and PFS for patients with advanced NSCLC, regardless of line of treatment, were 29.1 (95% CI 22.7–30.7) and 16.5 (95% CI 11.2–20.0) months, respectively. Similarly, patients with NSCLC who were on corticosteroid treatment at the initiation of immunotherapy had poorer PFS compared to those who did not (HR = 2.78, 95% CI 1.40–5.50, $p=0.003$) (Fig. 2B). In addition, the occurrence of an irAE was associated with increased PFS in this patient population (HR = 0.48, 95% CI 0.25–0.92, $p=0.026$) (Fig. 2C). Detailed data on univariate analysis in the total population and in patients with advanced NSCLC are shown in Table 3.

Multivariate modeling adjusting for PD-L1 expression (which was univariately associated with PFS) was applied to estimate the independent effect of corticosteroid use and irAE occurrence on PFS in patients with advanced NSCLC. The use of corticosteroid treatment for AID and the development of irAE maintained their independence prognostic significance for PFS in multivariate analysis (HR = 2.32, 95% CI 1.04–5.18, $p=0.040$ and HR = 0.37, 95% CI 0.16–0.88, $p=0.024$, respectively), while negative PD-L1 expression lost its unfavorable prognostic value (HR = 3.01, 95% CI 0.90–10.05, $p=0.073$).

Discussion

This is the largest multicenter study to date, to the best of our knowledge, evaluating the safety and efficacy of immune checkpoint inhibitors in patients with cancer and pre-existing AID. The administration of immunotherapy to patients of our study was associated with manageable adverse events

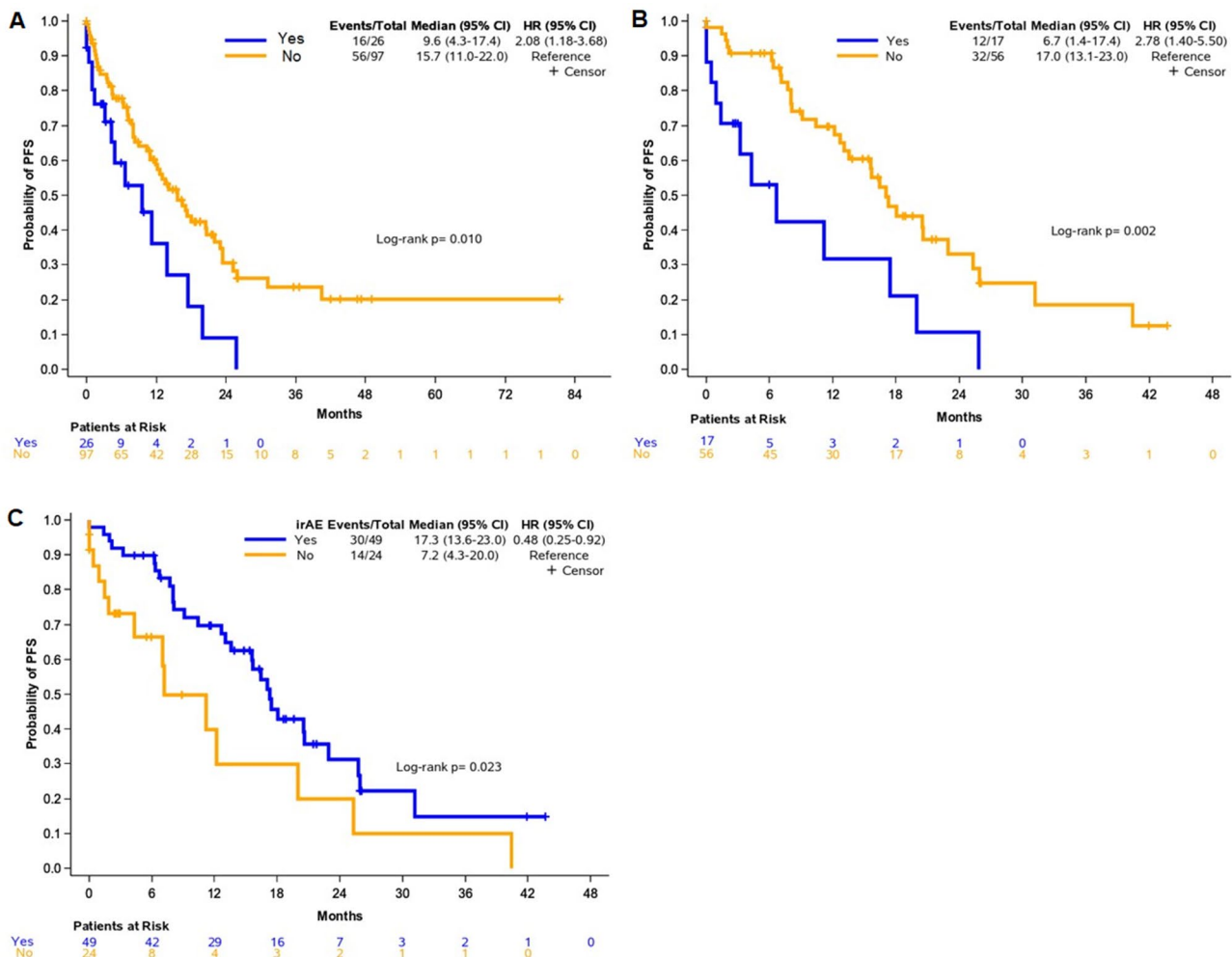


Fig. 2 Clinical outcomes. (A) Progression-free survival (PFS) based on the use of corticosteroids in the entire cohort, (B) PFS based on the use of corticosteroids in patients with advanced non-small

cell lung cancer (NSCLC) and (C) association of the occurrence of immune-related adverse events (irAEs) with PFS in patients with advanced NSCLC

that infrequently required permanent discontinuation of treatment (Fig. 3). However, severe flare of the underlying AID occurred in selected patients, thus underlying the importance of balancing expected efficacy and possible toxicity in these patients. Outcome analysis was performed in all patients, but also separately in patients with NSCLC, representing a more homogenous group. We observed that corticosteroid therapy at initiation of immunotherapy was associated with shorter PFS in patients with NSCLC, which was also confirmed in multivariate analysis. Finally, the occurrence of an irAE in patients with NSCLC receiving immune checkpoint inhibitors was independently associated with longer PFS.

In our study, an exacerbation of the underlying AID was reported in 25% of patients, while an additional 35% developed different irAEs. Most of these adverse events were mild and led to treatment discontinuation in only 8% of patients. Previous studies have similarly reported low discontinuation

rates, ranging from 0 to 18% [9, 13, 14, 18, 22–24]. Higher discontinuation rates have been also described, however, in those studies, small number of patients was included, and therefore, these data need to be addressed with caution [17, 25]. Treatment-related deaths have rarely been reported in retrospective studies evaluating immunotherapy in patients with AID and cancer [11, 13, 14]. In one study, there was only one death possibly related to immunotoxicity [18]. In our study, we recorded two immunotherapy-associated deaths, attributed to pneumonitis and flare of the underlying myasthenia, respectively. On the contrary, a significant number of patients did not develop either an exacerbation of the pre-existing AID or different irAEs. Therefore, additional factors seem to influence autoimmunity mechanisms in patients receiving immunotherapy.

Similarly to previous studies, our case series included patients with a wide variety of AID, thus complicating drawing conclusions about specific disorders [12–16, 18, 22].

Table 3 Cox univariate regression for parameters of interest with respect to PFS and OS in the entire cohort and among patients with advanced non-small cell lung cancer

	<i>OS</i>			<i>PFS</i>		
	Event/Total	HR (95% CI)	<i>p</i> value	Event/Total	HR (95% CI)	<i>p</i> value
Entire cohort						
Immunomodulatory drug use (excluding corticosteroids)						
No	24/92	Reference	–	55/92	Reference	–
Yes	6/31	0.79 (0.32–1.95)	0.616	17/31	1.06 (0.61–1.83)	0.844
Corticosteroid use						
No	25/97	Reference	–	56/97	Reference	–
Yes	5/26	1.72 (0.64–4.62)	0.279	16/26	2.08 (1.18–3.68)	0.012
irAE						
No	14/49	Reference	–	28/49	Reference	–
Yes	16/74	0.55 (0.27–1.12)	0.099	44/74	0.63 (0.39–1.02)	0.059
	<i>OS</i>			<i>PFS</i>		
	Event/Total	HR (95% CI)	<i>p</i> value	Event/Total	HR (95% CI)	<i>p</i> value
Advanced NSCLC						
Immunomodulatory drug use (excluding corticosteroids)						
No	14/55	Reference	–	32/55	Reference	–
Yes	4/18	1.04 (0.34–3.18)	0.948	12/18	1.73 (0.88–3.38)	0.111
Corticosteroids use						
No	14/56	Reference	–	32/56	Reference	–
Yes	4/17	2.11 (0.67–6.71)	0.204	12/17	2.78 (1.40–5.50)	0.003
irAE						
No	5/24	Reference	–	14/24	Reference	–
Yes	13/49	0.65 (0.23–1.86)	0.425	30/49	0.48 (0.25–0.92)	0.026

CI confidence interval, HR hazard ratio, irAE immune-related adverse event, NSCLC non-small cell lung cancer, PFS progression-free survival, OS overall survival

Bold values indicate statistically significant parameters

Only two studies focus on specific AID, inflammatory bowel disease [11] and rheumatoid arthritis [24], respectively. The small number of patients with AID that receive treatment with immunotherapy in clinical practice limits analysis on specific AID. Since there are no data on whether all AIDs are associated with similar risk of disease flare or development of other irAEs after treatment with immunotherapy, generalizations need to be made with caution.

Several differences in our patient population, including diverse tumor types and disease stage might have compromised outcome analysis. Therefore, we focused our outcome analysis on a more homogenous group, comprising patients with advanced NSCLC. Importantly, the use of corticosteroids, but not other immunomodulatory agents, at the initiation of immunotherapy treatment was associated with shorter PFS, in the total patient population and in patients with NSCLC. Information on the use of immunosuppressive drugs was relevant to the treatment of the pre-existing AID. However, information on the administration of corticosteroids for other medical purposes, which might have affected

patient outcomes [26], was not available. Other investigators also observed that patients who were on immunomodulatory drugs when they received immunotherapy had shorter PFS [18] or lower response rates [14]. Based on this data and taking into account retrospective and case report evidence suggesting that the administration of certain immunomodulatory drugs may not negatively impact clinical outcomes, investigators have suggested strategies to avoid the use of corticosteroids or to replace them with other agents that do not seem to interfere with the efficacy of immunotherapy [27]. To address safety and efficacy concerns, ongoing clinical trials are evaluating the use of immune checkpoint inhibitors in patients with AID and diverse tumor types (i.e., NCT03816345).

Limitations of our study include its retrospective nature, the lack of equal representation of different tumor types and the wide range of AIDs. Strengths of our study include the large patient population, the participation of multiple centers across the country, the inclusion of both efficacy and toxicity

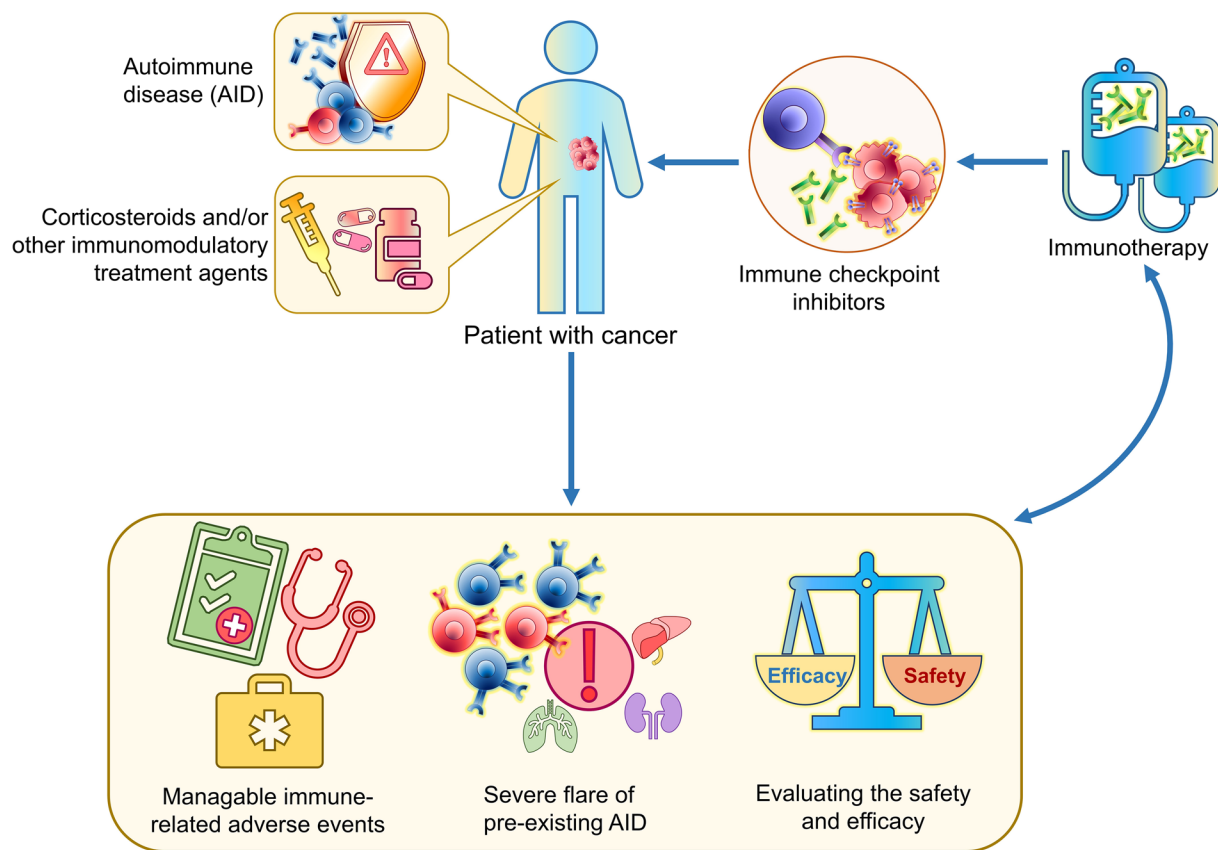


Fig. 3 Immunotherapy for treatment of patients with cancer and underlying autoimmune disease (AID). The administration of immunotherapy to patients of our study was associated with manageable adverse events that infrequently required permanent discontinuation

of treatment. However, since severe flare of the underlying AID might occur in selected patients, expected efficacy and possible toxicity need to be balanced before treatment administration

detailed data and, finally, the long follow-up for the majority of the patients.

As the number of patients who will receive immunotherapy as part of their cancer treatment significantly increases, it is critical to ensure robust efficacy and safety data for the use of immune checkpoint inhibitors and their combinations in patients with underlying AID. In clinical practice, several factors need to be taken into consideration, including the predicted benefit depending on published data based on tumor type and/or tumor molecular and immune profile, risk of toxicity, type of AID, availability of alternative treatments and patient preference. To date, no consensus guidelines have been proposed to facilitate decision making for these critical clinical issues [27]. Investigators have proposed personalized treatment approaches to address toxicity issues in patients with pre-existing AID who need to receive immunotherapy [27]. Additionally, it is important to expand our understanding on pathogenicity of autoimmunity and identify predictive biomarkers for toxicity to accurately identify patients who will benefit from immune checkpoint inhibitors, while sparing the rest from unnecessary toxicity.

Registry and real-world data studies will enable the accumulation of comprehensive data and shed some light into safety and efficacy issues in this vulnerable patient population.

In conclusion, the administration of immune checkpoint inhibitors in patients with cancer and pre-existing AID leads to manageable irAE that infrequently require permanent discontinuation of immunotherapy. However, since severe flare of the pre-existing AID might occur, expected efficacy must be balanced against potential toxicity issues, before initiation of immune checkpoint inhibitors. Importantly, immunotherapy needs to be administered with caution to patients who are under corticosteroid treatment, since certain immunomodulatory drugs might negatively impact their prognosis. Future studies need to prospectively evaluate the administration of immune checkpoint inhibitors and their combinations to large numbers of patients with a wide range of AID to ensure the efficacy and safety of these agents, also in relation to corticosteroids.

Supplementary Information The online version contains supplementary material available at <https://doi.org/10.1007/s00262-021-02985-6>.

Acknowledgements The authors also wish to thank Maria Moschoni for data coordination.

Author Contributions Conceptualization: EF; Formal analysis: GAK; Investigation: EF; Resources: EF, SL, AK, SL, AV, AC, AL, AP, IB, GM, NK, AK, ES, AB, AN, GF, VG, MC, EK, MT, ER, HL, DD, IB, AA, GP, DS, HG, KNS, DB; Supervision: EF; Funding acquisition: EF; Visualization: EF; Methodology: EF; Writing—original draft: EF, GAK. Project administration: EF; Writing – review and editing: all authors.

Funding The study was supported by an internal Hellenic Cooperative Oncology Group research grant (TR21/AI) and by a Hellenic Society of Medical Oncology grant.

Availability of data All data are available upon reasonable request.

Declarations

Conflict of interest EF: Advisory Role: LEO Pharma. Speaker fees: Roche, Pfizer, AstraZeneca. Stock ownership: GENPREX INC, Deciphera Pharmaceuticals, Inc. Travel grant: Merck, Pfizer, and K.A.M Oncology/Hematology and DEMO. AK: Advisory Role: Genesis Pharma. Honoraria: Pfizer. Speaker's bureau: Roche. Research Funding: Merck. Travel: MSD. AK: educational grants: Novartis, Pfizer, Merck, Roche, BMS, MSD, Genesis, and Ipsen. AP: Consultation Fees: Amgen, Merck Serono, Roche, BMS, AstraZeneca, MSD. Honoraria: Amgen, Merck Serono, Roche, BMS, AstraZeneca, MSD. Research funds: BMS, Kura. GM: Honoraria/Consultancy: AstraZeneca, Roche, Pfizer, BMS, MSD, Takeda, Boehringer, Merck, Novartis, Amgen, Travel Fees: AstraZeneca, Roche, Pfizer, BMS, MSD, Takeda, Boehringer, Merck, Novartis, Astellas, Pierre Fabre. AK: Consulting or advisory role: Amgen, Roche, BMS, AstraZeneca, MSD, IPSEN. AN: Advisory Board and Speaker fees: Pfizer, Novartis. GF: Advisory Board of Pfizer, Novartis and Roche. Honoraria from AstraZeneca, Genprex stock, Daiichi Sankyo stock. ARIAD stock. RFL Holdings. FORMYCON. HG: Advisory Role: Bristol-Myers Squibb, MSD Oncology, Amgen, Novartis, Roche, Pierre Fabre, Honoraria: Bristol-Myers Squibb, MSD Oncology, Roche, Amgen, Novartis, Research Funding: Bristol-Myers Squibb, Roche, MSD Oncology, Travel: Roche, Bristol-Myers Squibb. The rest of the authors declare no conflict of interest.

Ethics approval The study was approved by the Institutional Review Board of “G. Papanikolaou” General Hospital (protocol number: 339_4/3/2021).

Consent for publication All authors have agreed to participate in this article and have given their consent for publication.

Open Access This article is licensed under a Creative Commons Attribution 4.0 International License, which permits use, sharing, adaptation, distribution and reproduction in any medium or format, as long as you give appropriate credit to the original author(s) and the source, provide a link to the Creative Commons licence, and indicate if changes were made. The images or other third party material in this article are included in the article's Creative Commons licence, unless indicated otherwise in a credit line to the material. If material is not included in the article's Creative Commons licence and your intended use is not permitted by statutory regulation or exceeds the permitted use, you will need to obtain permission directly from the copyright holder. To view a copy of this licence, visit <http://creativecommons.org/licenses/by/4.0/>.

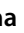
References

1. Goodman AM, Kato S, Bazhenova L et al (2017) Tumor mutational burden as an independent predictor of response to immunotherapy in diverse cancers. *Mol Cancer Ther* 16:2598–2608
2. Marabelle A, Le DT, Ascierto PA et al (2019) Efficacy of pembrolizumab in patients with noncolorectal high microsatellite instability/mismatch repair-deficient cancer: results from the phase II KEYNOTE-158 study. *J Clin Oncol* 38:1–10
3. Reck M, Rodríguez-Abreu D, Robinson AG et al (2016) Pembrolizumab versus chemotherapy for PD-L1–Positive non–small-cell lung cancer. *N Engl J Med* 375:1823–1833
4. Ramos-Casals M, Brahmer JR, Callahan MK et al (2020) Immune-related adverse events of checkpoint inhibitors. *Nat Rev Dis Primers* 6:38
5. Petrelli F, Signorelli D, Ghidini M et al (2020) Association of steroids use with survival in patients treated with immune checkpoint inhibitors: a systematic review and meta-analysis. *Cancers* 12:546
6. Arbour KC, Mezquita L, Long N et al (2018) Impact of baseline steroids on efficacy of programmed cell death-1 and programmed death-ligand 1 blockade in patients with non–small-cell lung cancer. *J Clin Oncol* 36:2872–2878
7. Kennedy LC, Bhatia S, Thompson JA, Grivas P (2019) Preexisting autoimmune disease: implications for immune checkpoint inhibitor therapy in solid tumors. *J Natl Compr Cancer Netw* 17:750–757
8. Coureau M, Meert A-P, Berghmans T, Grigoriu B (2020) Efficacy and toxicity of immune -checkpoint inhibitors in patients with preexisting autoimmune disorders. *Front Med*. <https://doi.org/10.3389/fmed.2020.00137>
9. Loriot Y, Sternberg CN, Castellano D et al (2020) Safety and efficacy of atezolizumab in patients with autoimmune disease: subgroup analysis of the SAUL study in locally advanced/metastatic urinary tract carcinoma. *Eur J Cancer* 138:202–211
10. Schadendorf D, Ascierto PA, Haanen J et al (2019) Safety and efficacy of nivolumab in challenging subgroups with advanced melanoma who progressed on or after ipilimumab treatment: a single-arm, open-label, phase II study (CheckMate 172). *Eur J Cancer* 121:144–153
11. Abu-Sbeih H, Faleck DM, Ricciuti B et al (2020) Immune checkpoint inhibitor therapy in patients with preexisting inflammatory bowel disease. *J Clin Oncol* 38:576–583
12. Johnson DB, Sullivan RJ, Ott PA et al (2016) Ipilimumab therapy in patients with advanced melanoma and preexisting autoimmune disorders. *JAMA Oncol* 2:234–240
13. Leonardi GC, Gainor JF, Altan M et al (2018) Safety of programmed death-1 pathway inhibitors among patients with non-small-cell lung cancer and preexisting autoimmune disorders. *J Clin Oncol* 36:1905–1912
14. Menzies AM, Johnson DB, Ramanujam S et al (2017) Anti-PD-1 therapy in patients with advanced melanoma and preexisting autoimmune disorders or major toxicity with ipilimumab. *Ann Oncol* 28:368–376
15. Danlos FX, Voisin AL, Dyeve V et al (2018) Safety and efficacy of anti-programmed death 1 antibodies in patients with cancer and pre-existing autoimmune or inflammatory disease. *Eur J Cancer* 91:21–29
16. Kähler KC, Eigentler TK, Gesierich A et al (2018) Ipilimumab in metastatic melanoma patients with pre-existing autoimmune disorders. *Cancer Immunol Immunother* 67:825–834
17. Richter MD, Pinkston O, Kottschade LA et al (2018) Brief report: cancer immunotherapy in patients with preexisting rheumatic disease: the mayo clinic experience. *Arthritis Rheumatol* 70:356–360

18. Tison A, Quéré G, Misery L et al (2019) Safety and efficacy of immune checkpoint inhibitors in patients with cancer and pre-existing autoimmune disease: a nationwide. Multicent Cohort Stud Arthritis Rheumatol 71:2100–2111
19. Wedam S, Fashoyin-Aje L, Bloomquist E et al (2020) FDA approval summary: palbociclib for male patients with metastatic breast cancer. Clin Cancer Res 26:1208
20. Feinberg BA, Gajra A, Zettler ME et al (2020) Use of real-world evidence to support FDA approval of oncology drugs. Value Health 23:1358–1365
21. Bascones-Martinez A, Mattila R, Gomez-Font R, Meurman JH (2014) Immunomodulatory drugs: oral and systemic adverse effects. Medicina oral, patologia oral y cirugia bucal 19:e24–e31
22. Cortellini A, Buti S, Santini D et al (2019) Clinical Outcomes of patients with advanced cancer and pre-existing autoimmune diseases treated with anti-programmed death-1 immunotherapy: a real-world transverse study. Oncologist 24:e327–e337
23. Weinstock C, Singh H, Maher VE et al (2017) FDA analysis of patients with baseline autoimmune diseases treated with PD-1/PD-L1 immunotherapy agents. J Clin Oncol 35:3018–3018
24. Efuni E, Cytryn S, Boland P et al (2020) Risk of toxicity after initiating immune checkpoint inhibitor treatment in patients with rheumatoid arthritis. J Clin Rheumatol. <https://doi.org/10.1097/rhu.0000000000001314>
25. Lee B, Wong A, Kee D et al (2016) The use of ipilimumab in patients with rheumatoid arthritis and metastatic melanoma. Ann Oncol 27:1174–1177
26. Ricciuti B, Dahlberg SE, Adeni A et al (2019) Immune checkpoint inhibitor outcomes for patients with non-small-cell lung cancer receiving baseline corticosteroids for palliative versus nonpalliative indications. J Clin Oncol 37:1927–1934
27. Haanen J, Ernstoff MS, Wang Y et al (2020) Autoimmune diseases and immune-checkpoint inhibitors for cancer therapy: review of the literature and personalized risk-based prevention strategy. Ann Oncol 31:724–744

Publisher's Note Springer Nature remains neutral with regard to jurisdictional claims in published maps and institutional affiliations.

Authors and Affiliations

Elena Fountzilas^{1,2}  · Sofia Lampaki³ · Georgia-Angeliki Koliou⁴ · Anna Koumariou⁵ · Sofia Levva^{6,7} · Anastasios Vagionas⁸ · Athina Christopoulou⁹ · Athanasios Laloyis¹⁰ · Amanda Psyrris¹¹ · Ioannis Binas¹² · Giannis Mountzios¹³ · Nikolaos Kentepozidis¹⁴ · Athanassios Kotsakis¹⁵ · Emmanouil Saloustris¹⁵ · Anastasios Boutis¹⁶ · Adamantia Nikolaidi¹⁷ · George Fountzilas^{18,19,20} · Vassilis Georgoulas²¹ · Miltiadis Chrysanthidis²² · Elias Kotteas²³ · Henry Vo²⁴ · Marinos Tsiatas²⁵ · Eleni Res²⁶ · Helena Linardou²⁷ · Dimitrios Daoussis²⁸ · Iliada Bompolaki²⁹ · Anna Andreadou³⁰ · George Papaxoinis³¹ · Dionisios Spyrtatos³ · Helen Gogas³² · Konstantinos N. Syrigos²³ · Dimitrios Bafaloukos²²

¹ Second Department of Medical Oncology, Euromedica General Clinic of Thessaloniki, Gravias 5, 54645 Thessaloniki, Greece

² European University Cyprus, Engomi, Cyprus

³ Pulmonary Department, Lung Cancer Oncology Unit, Aristotle University of Thessaloniki, G. Papanicolaou Hospital, Thessaloniki, Greece

⁴ Department of Biostatistics, Hellenic Cooperative Oncology Group, Athens, Greece

⁵ Hematology-Oncology Unit, Fourth Department of Internal Medicine, Attikon University Hospital, Medical School, National and Kapodistrian University of Athens, Athens, Greece

⁶ Department of Medical Oncology, Bioclinic of Thessaloniki, Thessaloniki, Greece

⁷ Department of Medical Oncology, Interbalkan Medical Center, Thessaloniki, Greece

⁸ Oncology Department, General Hospital of Kavala, Kavala, Greece

⁹ Medical Oncology Unit, S. Andrew Hospital, Patras, Greece

¹⁰ Second Department of Medical Oncology, Hygeia Hospital, Athens, Greece

¹¹ Section of Medical Oncology, Department of Internal Medicine, Attikon University Hospital, Faculty of Medicine, National and Kapodistrian University of Athens School of Medicine, Athens, Greece

¹² Second Department of Medical Oncology, Metropolitan Hospital, Piraeus, Greece

¹³ Fourth Department of Medical Oncology and Clinical Trials Unit, Henry Dunant Hospital Center, Athens, Greece

¹⁴ Department of Medical Oncology, 251 Airforce General Hospital, Athens, Greece

¹⁵ Department of Oncology, School of Health Sciences, University General Hospital of Larissa, University of Thessaly, Larissa, Greece

¹⁶ First Department of Clinical Oncology, Theagenio Hospital, Thessaloniki, Greece

¹⁷ Oncology Department, MITERA Hospital, Athens, Greece

¹⁸ Laboratory of Molecular Oncology, Hellenic Foundation for Cancer Research/Aristotle University of Thessaloniki, Thessaloniki, Greece

¹⁹ Aristotle University of Thessaloniki, Thessaloniki, Greece

²⁰ German Oncology Center, Limassol, Cyprus

²¹ University of Crete, Rethymnon, Greece

²² First Department of Medical Oncology, Metropolitan Hospital, Piraeus, Greece

²³ Oncology Unit GPP, Sotiria General Hospital, National and Kapodistrian University of Athens School of Medicine, Athens, Greece

- ²⁴ Department of Investigational Cancer Therapeutics, University of Texas MD Anderson Cancer Center, Houston, TX, USA
- ²⁵ Department of Oncology, Athens Medical Center, Athens, Greece
- ²⁶ Third Department of Medical Oncology, Agii Anargiri Cancer Hospital, Athens, Greece
- ²⁷ Fourth Oncology Department, Metropolitan Hospital, Piraeus, Greece
- ²⁸ Department of Internal Medicine, Division of Rheumatology, University of Patras Medical School, Patras University Hospital, Rion, Greece
- ²⁹ Oncology Department, General Hospital of Chania, Crete, Greece
- ³⁰ Third Department of Medical Oncology, Theagenio Hospital, Thessaloniki, Greece
- ³¹ Second Department of Internal Medicine, Agios Savvas Cancer Hospital, Athens, Greece
- ³² First Department of Medicine, Laiko General Hospital, National and Kapodistrian University of Athens School of Medicine, Athens, Greece