

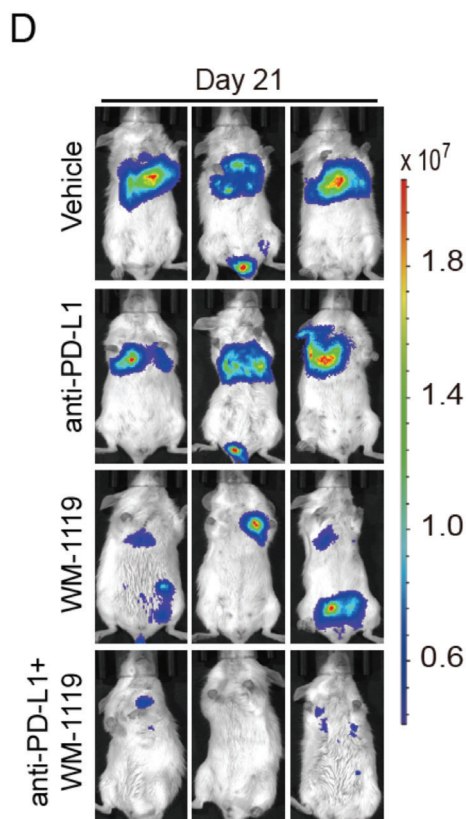
# KAT6A Acetylation of SMAD3 Regulates Myeloid-Derived Suppressor Cell Recruitment, Metastasis, and Immunotherapy in Triple-Negative Breast Cancer

Bo Yu, Fei Luo, Bowen Sun, Wenxue Liu, Qiqi Shi, Shi-Yuan Cheng, Ceshi Chen, Guoqiang Chen, Yanxin Li, and Haizhong Feng

*Adv. Sci.* 2021, 8, 2100014

DOI: 10.1002/advs.202100014

In the originally published article, the representative BLI images of treated mice in **Figure 6D** present the wrong samples (the third in the second row, and the third in the fourth row). The correct Figure 6D is shown below. The authors declare that this correction does not affect the description, interpretation, or the original conclusions of the manuscript. The authors regret the inconvenience this error may have caused.



**Figure 6.** Targeting KAT6A sensitizes PD-L1 immunotherapy in TNBC by decreasing MDSCs recruitment. D) Representative BLI images of treated mice on Day 21.

© 2022 The Authors. Advanced Science published by Wiley-VCH GmbH. This is an open access article under the terms of the Creative Commons Attribution License, which permits use, distribution and reproduction in any medium, provided the original work is properly cited.

DOI: 10.1002/advs.202105793